

# Efflux Pump Inhibitor Phenylalanine-Arginine B-Naphthylamide Effect on the Minimum Inhibitory Concentration of Imipenem in *Acinetobacter baumannii* Strains Isolated From Hospitalized Patients in Shahid Motahari Burn Hospital, Tehran, Iran

Mehrdad Gholami<sup>1</sup>; Ali Hashemi<sup>2</sup>; Mojdeh Hakemi-Vala<sup>2,\*</sup>; Hossein Goudarzi<sup>2</sup>; Masoumeh Hallajzadeh<sup>1</sup>

<sup>1</sup>Department of Microbiology, Faculty of Medicine, Iran University of Medical Sciences, Tehran, IR Iran

<sup>2</sup>Department of Microbiology, Shahid Beheshti University of Medical Sciences, Tehran, IR Iran

\*Corresponding author: Mojdeh Hakemi-Vala, Department of Microbiology, Shahid Beheshti University of Medical Sciences, Tehran, IR Iran. Tel: +98-2123872556, Fax: +98-2122439964, E-mail: m.haklemi@sbmu.ac.ir

Received: March 30, 2014; Revised: August 15, 2014; Accepted: August 25, 2014

**Background:** *Acinetobacter baumannii* has emerged as a highly troublesome pathogen and a leading cause of mortality and morbidity among hospitalized burn patients.

**Objectives:** The aims of this study were to determine the frequency of the *AdeABC* genes and the role of the efflux pump(s) in the imipenem resistance of *A. baumannii* strains isolated from burn patients.

**Materials and Methods:** This study was conducted on 60 *A. baumannii* isolates collected from 240 wound samples of burn patients admitted to the Burn Unit of Shahid Motahari Burn hospital, Tehran, Iran. Antibiotic susceptibility tests were performed using the Kirby-Bauer disc diffusion and broth microdilution according to the clinical and laboratory standards institute (CLSI) guidelines. The activity of the efflux pump was evaluated using the efflux pump inhibitor, the phenylalanine-arginine B-naphthylamide (PABN). The *AdeABC* genes were detected by polymerase chain reaction (PCR) and sequencing.

**Results:** In this study, 100% of the isolates were resistant to cefotaxime, ceftazidime, ceftriaxone, ciprofloxacin, cefepime, piperacillin, meropenem, co-trimoxazole, and piperacillin/tazobactam; 56 (94%) to gentamicin; 50 (81%) to amikacin; 58 (97%) to imipenem; and 45 (76%) to tetracycline. Additionally, all the isolates were susceptible to colistin. The susceptibility of the strains to imipenem was highly increased in the presence of the efflux pump inhibitor such that for 58 (96.6%) of the isolates, the PABN reduced the minimum inhibitory concentrations (MIC) by 4- to 64-fold. The *adeA* and *adeB* genes were detected in 60 (100%) of the isolates, and the *adeC* gene was present in 51 (85%).

**Conclusions:** The efflux pump may play a role in antibiotic resistance in *A. baumannii* isolates. The ability of *A. baumannii* isolates to acquire drug resistance by the efflux pump mechanism is a concern. Thus, new strategies are required in order to eliminate the efflux transport activity from resistant *A. baumannii* isolates causing nosocomial infections.

**Keywords:** Antibiotic Resistance; Burn; Efflux Pump Inhibitor; *AdeABC*; *Acinetobacter baumannii*

## 1. Background

Multidrug-resistant (MDR) *Acinetobacter baumannii* isolates have emerged as the causes of nosocomial infections worldwide. Recently, *A. baumannii* isolates have proved almost always extensively drug-resistant (XDR), which is defined by resistance to all antibacterial agents except tigecycline and colistin. The treatment of XDR *A. baumannii* infections is a major challenge given the lack of effective treatment options and limited management experience. Unfortunately, the increased use of tigecycline and colistin as salvage therapy has been associated with the emergence of pan-drug resistance, against which no known antibacterial agents retain activity (1). There is a huge risk of these "superbugs" extending into the community and threatening public health (2). *Acinetobacter* is an

important opportunistic pathogen of hospital-acquired infections, particularly in intensive care units, and as a leading cause of morbidity and mortality among hospitalized burn patients. Indeed, *A. baumannii* is usually responsible for up to 10% of hospital-acquired infections and increases mortality up to 70% (3). *Acinetobacter* is a causative agent of nosocomial bacteremia, pneumonia, urinary tract infection, and meningitis (4, 5).

A wide array of antibacterial resistance mechanisms has been reported for resistant *A. baumannii* strains (6) such as efflux pumps, outer membrane proteins, and B-lactamases (7). Nevertheless, it has been established that efflux mechanisms play an important role in multi-drug resistance in Gram-negative bacteria, particularly in

*A. baumannii* isolates (8). Efflux pumps are composed of transport proteins that pump out a broad range of toxic substrates such as biocides and antibiotics from bacteria, in an energy-dependent manner (9). It has recently been reported that resistance to B-lactams, aminoglycosides, chloramphenicol, tetracycline, erythromycin, and the dye ethidium bromide in clinical isolates are due to the overexpression of the AdeABC pump (9, 10). The AdeABC, a kind of efflux pump system initially detected in an MDR isolate of *A. baumannii*, is responsible for increased resistance to different antibiotics (8). The chromosomally encoded AdeABC is a tripartite efflux machinery that belongs to the RND-type family. The AdeC is a homologous outer membrane protein (OprM) from *Pseudomonas aeruginosa*. The AdeA is most similar to membrane fusion proteins, whereas the AdeB contains twelve transmembrane segments and exhibits a high degree of identity with several RND proteins.

The structural genes *adeA*, *adeB*, and *adeC* are contiguous and directly oriented, suggesting that they constitute an operon (10). The overexpression of efflux pumps in *A. baumannii* is a common mechanism of multidrug resistance in this nosocomial pathogen. An increased efflux pump expression is often assumed from the minimum inhibitory concentrations (MICs) of dyes and antibiotics, without measurement of efflux levels (11). The active efflux of antibacterial agents is a mechanism in *A. baumannii* isolates whereby they can become MDR. A combined use of efflux pump inhibitors such as phenylalanine-arginine B-naphthylamide (PABN, also called MC-207, 110) with pump substrates is under exploration to overcome efflux-mediated multidrug resistance. The PABN is one of the best-studied efflux pump inhibitors. The PABN was originally detected in 1999 and characterized further in 2001 as a broad-spectrum efflux pump inhibitor, capable of significantly reducing antibiotic resistance in *P. aeruginosa* (12). Accordingly, the aim of this study was to analyze the contribution of the active efflux system to imipenem resistance in the clinical isolates of *A. baumannii* using the efflux pump inhibitor, the PABN.

## 2. Objectives

The aims of this study were to determine the frequency of the AdeABC genes and the role of efflux pump (s) in the imipenem resistance of *A. baumannii* strains isolated from burn patients.

## 3. Materials and Methods

### 3.1. Bacterial Identification

From June to October 2013, a total of 60 non-duplicate non-consecutive isolates of *A. baumannii* were recovered from 240 wound samples of burn patients admitted to the burn unit of Shahid Motahari Burn Hospital, Tehran, Iran. Wound exudates were collected by swabbing and immediately transported to the microbiology laboratory of the department of microbiology of Shahid Beheshti

university of medical sciences, Tehran, Iran. According to conventional biochemical tests (13), the typical reaction of *A. baumannii* is positive to glucose and negative to oxidase, maltose, indole, mannitol, esculin, and H<sub>2</sub>S. *A. baumannii* also has ALK/ALK reaction on triple sugar iron agar. Standard identification, confirmation, and complete method were conducted using the Microgen Identification kit (Microgen TM, UK). Samples confirmed as an *A. baumannii* were stored in Tryptic Soy Broth (TSB) (Merck, Germany), containing glycerol (20%) at -70°C (14).

### 3.2. Antimicrobial Susceptibility Testing

The antimicrobial susceptibility test to tetracycline (TE, 10 µg), meropenem (MEM: 10 µg), amikacin (30 µg), imipenem (10 µg), cefotaxime (30 µg), ceftriaxone (30 µg), piperacillin/tazobactam (100/10 µg), colistin sulfate (10 µg), piperacillin (100 µg), ceftazidime (30 µg), ciprofloxacin (5 µg), cefepime (30 µg), trimethoprim-sulfamethoxazole (2.5 µg), and gentamicin (10 µg) (Mast, UK) was performed using the Kirby-Bauer disk diffusion method based on the clinical laboratory standards institute (CLSI) 2012 guidelines (15). Briefly, a bacterial suspension was obtained from overnight cultures. The turbidity of each bacterial suspension was adjusted equivalent to a no. 0.5 McFarland standard and then inoculated on Müller-Hinton agar (Merck, Germany). The diameter of the inhibition zones was measured after incubation at 35°C for 18 - 24 hours, and the data were reported as susceptible, intermediate, and resistant. *Escherichia coli* ATCC 25922 was used as a quality control strain.

### 3.3. Minimum Inhibitory Concentration (MIC)

Strains which were resistant to imipenem and ceftazidime during the disk diffusion test were re-checked and their MICs were determined via the broth microdilution method in accordance with the 2012 guidelines of the CLSI (15). *Escherichia coli* ATCC 25922 was used as a quality control strain. Antibiotic powders were dissolved in an appropriate solvent or sterile deionized water according to the manufacturer's recommendations. The test concentrations for the antibiotics were 256 µg/mL, 128 µg/mL, 64 µg/mL, 32 µg/mL, 16 µg/mL, 8 µg/mL, 4 µg/mL, 2 µg/mL, 1 µg/mL, 0.5 µg/mL, and 0.25 µg/mL. Each well of a 96-well microtiter plate (Extra Gene-Company-product No.EL-1190-FCS) contained a total volume of 100 µL of the antibiotic dilution and Müller-Hinton broth. Subsequently, the 0.5 McFarland suspension was diluted 1:20 to yield 5 × 10<sup>6</sup> CFU/mL. When 0.01 mL of this suspension was inoculated into the broth, the final test concentration of the bacteria was approximately 5 × 10<sup>5</sup> CFU/mL. The correct density of the turbidity standard was verified by measuring absorbance using a spectrophotometer. The absorbance at 625 nm should be 0.08 to 0.13 for the 0.5 McFarland standard. The samples were incubated at 37°C for 18 to 24 hours. The lowest concentration of the antibiotics that did not have visible bacterial growth was defined as the MIC (15).

### 3.4. Treatment of the Efflux Pump Inhibitor

Changing in susceptibility to imipenem in the presence of 100 µg/mL of the PABN (Sigma-Aldrich, Oakville, ON, Canada) was tested as described under "Susceptibility Testing" above. Specifically, susceptibility to imipenem was tested in the presence or absence of the PABN in parallel. Following the addition of imipenem and the bacterial cell inoculum, 2 µL of the 5 mg/mL stock of PABN was added to the microplate wells. (total volume, 100 µL). The rest of the procedures were carried out as described above (16). To check the acidity of the test and evaluate the effect of the PABN on the bacterial grow, all the bacteria were cultured in the Mueller Hinton broth, containing the PABN (100 µL/mL).

### 3.5. DNA Extraction

In this stage, 2 ml of 24 hours grown *A. baumannii* cultures in a brain heart infusion (BHI) medium (Merck, Germany) were transferred into Eppendorf microfuge tubes and centrifuged at 8000 rpm for 10 min. The pellets were dissolved in the lysis buffer (700 µL) (NaCl 1 M, Tris -HCl 1 M, EDTA 0.5 M and DD/water). Next, 20 µL of the Sodium Dodecyl sulfate (SDS) solution (25%) and 3 µL of proteinase K (20 mg/mL) were added to the mixture. The microfuge tubes were incubated at 60°C for 1 h. After the lysis of the bacterial cells, 620 µL of phenol, chloroform, and isoamylalcohol (25: 24: 1 Vol/ Vol) was added to the above solution and carefully shaken and the mixtures were centrifuged at 10000 rpm for 10 min at 4°C. The supernatant was transferred to another tube and 2 mL of cold ethanol (75%) was added till 1 h. Then the DNA was precipitated at 10,000 rpm for 10 minutes. The supernatant was discarded, and the DNA was dissolved in a Tris-EDTA (TE) buffer (50 µL), containing RNase (15 µL). The extracted DNA samples were kept at -20°C for further investigation.

### 3.6. Detection of the AdeABC Genes by Polymerase Chain Reaction

PCR was performed on the *A. baumannii* isolates for the AdeABC genes. The primers utilized are presented in Table 1. Briefly, the 25 µL PCR mixture contained 2.5 µL of bacterial DNA, 10 pM of each primer, 1.5 mM of MgCl<sub>2</sub>, 250 µM of each dNTP, 10 Mm of Tris-HCl (pH: 9.0), 30 Mm of KCl, and 1 U of Taq DNA polymerase (Bioneer Company, Korea,

Cat. No. K-2012). Reactions were performed on a thermal cycler (Eppendorf, Master Cycler Gradient). Amplification was carried out with the following thermal cycling conditions: 5 min at 94°C and 30 cycles of amplification consisting of 1 min at 94°C, 1 minute at 45°C - 56°C, and 1 minute at 72°C, with 5 minutes at 72°C for the final extension. The PCR product bands were analyzed after electrophoresis on agarose gel (1%) at 90 V for 50 minutes in 1X boric acid (TBE), containing ethidium bromide, and the result was checked under UV irradiation. A PCR purification kit (Bioneer Co., Korea) was used to purify the PCR products, and sequencing was performed by the Bioneer Company (Korea). The nucleotide sequences were analyzed with the Chromas 1.45 software and BLAST in NCBI.

### 3.7. Statistical Analysis

This research was a descriptive-application study. MINITAB16 software was used for the statistical analyses. The P value and confidence intervals were less than 0.05 and 95%, respectively.

### 3.8. Nucleotide Sequence Accession Numbers

The nucleotide sequences of the *adeA*, *adeB*, and *adeC* were submitted to the GenBank database and were assigned accession numbers KJ711551, KJ711555, and KJ711554, respectively.

## 4. Results

### 4.1. Bacterial Isolates and Antibiotic Resistance

Totally, 60 *A. baumannii* strains were isolated from 240 wound samples of burn patients admitted to the burn unit at Shahid Motahari Burn Hospital (Tehran, Iran). Fifteen (25 %) strains were isolated from female patients and 45 (75 %) from male patients. The age range of the patients was between 7 and 65 years. The resistance of *A. baumannii* isolates to the tested antibiotics was 60 (100%) to cefotaxime, ceftazidime, ceftriaxone, ciprofloxacin, cefepime, piperacillin, meropenem, co-trimoxazole, and piperacillin/tazobactam; 58 (97%) to imipenem; 56 (94%) to gentamicin; 50 (81%) to amikacin; 45 (76%) to tetracycline; and 0 (0.0%) to colistin (Table 2). The MICs of ceftazidime and imipenem for the *A. baumannii* isolates are presented in Table 3.

**Table 1.** Oligonucleotide Primers Used in this Study

Sequence (5' - 3')	Primer	Product Length, bp	Company	Reference
<b>AdeA</b>		510	Bioneer	(17)
CTCTAGCCGATGTCGCTCAA	AdeA-F			
ATACCTGAGGCTCGCCACTG	AdeA-R			
<b>AdeB</b>		862	Bioneer	(18)
AAGTATGAATTGATGCTGC	AdeB-F			
AACGATTATATTGTTGTGG	AdeB-R			
<b>AdeC</b>		435	Bioneer	(17)
TGCGGCAGGTTAGCCCATCG	AdeC-F			
GCGGAACAGGATGACCTGCT	AdeC-R			

**Table 2.** Antimicrobial Susceptibility Testing Results among the *A. baumannii* Isolates<sup>a</sup>

Antibiotic	Resistant	Intermediate	Sensitive
Gentamicin	56 (94)	0 (0)	4 (6)
Co-trimoxazole	60 (100)	0 (0)	0 (0)
Amikacin	50 (83)	5 (8)	5 (8)
Imipenem	58 (97)	2 (3)	0 (0)
Cefotaxime	60 (100)	0 (0)	0 (0)
Cefepime	60 (100)	0 (0)	0 (0)
Meropenem	60 (100)	0 (0)	0 (0)
Ciprofloxacin	60 (100)	0 (0)	0 (0)
Ceftriaxone	60 (100)	0 (0)	0 (0)
Piperacillin/tazobactam	60 (100)	0 (0)	0 (0)
Ceftazidime	60 (100)	0 (0)	0 (0)
Tetracycline	45 (76)	7 (11)	8 (13)
Piperacillin	60 (100)	0 (0)	0 (0)
Colistin	0 (0)	5 (5)	55 (95)

<sup>a</sup> Data are presented as No. (%).

**Table 3.** Minimum Inhibitory Concentration (MIC) of Ceftazidime and Imipenem among the *A. baumannii* Strains

Antibiotics	MIC <sup>a</sup>		
	MIC50	MIC90	MIC Range
Imipenem	64	128	16 - 128
Ceftazidime	256	> 256	32 - > 256

<sup>a</sup> Data are presented as µg/ml.

#### 4.2. Effects of the Efflux Pump Inhibitor on Imipenem Resistance

To determine the role of the efflux pump in the imipenem-resistant phenotype of the 60 *A. baumannii* isolates, we evaluated the variation of the MIC of imipenem in the presence or absence of the PABN (100 µg/mL). Our comparison analysis indicated that in the presence of the pump inhibitor, the quantity of the MICs of imipenem in most of the isolates decreased in the presence of the efflux pump inhibitor (Table 4). Based on a fourfold or greater decrease in the MICs as the criterion for significance (16), the MICs for 58 of the 60 isolates (96.6%) were reduced significantly by 4- to 64-fold. In addition, a twofold decrease was detected in the 2 (3.3%) remaining isolates in the presence of the efflux pump inhibitor. All the grown bacteria cultured in the Mueller-Hinton broth, containing the PABN (100 µg/mL) without with no any imipenem, showed well growth of bacteria, indicating that the PABN (100 µg/mL) did not have an antibacterial effect itself. These results showed that drug efflux systems were associated with resistance to imipenem in the *A. baumannii* isolates in the present study.

**Table 4.** Effects of the Phenylalanine-Arginine B-Naphthylamide (PABN) on the Minimum Inhibitory Concentration of Imipenem (µg/mL) in the *A. baumannii* Isolates

Isolate <sup>a</sup>	Imipenem	Imipenem + PaBN <sup>a</sup>
1 (1.6)	16	8 (2)
3 (5)	32	2 (16)
7 (11.6)	32	4 (8)
1 (1.6)	32	16 (2)
4 (6.6)	64	2 (32)
7 (11.6)	64	4 (16)
6 (10)	64	8 (8)
3 (5)	64	16 (4)
2 (3.3)	128	2 (64)
14 (23.3)	128	4 (32)
8 (13.3)	128	8 (16)
1 (1.6)	128	16 (8)
3 (5)	32	8 (4)

<sup>a</sup> Data are presented as No. (%).

### 4.3. Analysis of the AdeABC Genes

The *adeA* and *adeB* were detected in 60 (100%) of the isolates (Figures 1 and 2), while the *adeC* was detected in 51 (85%) isolates (Figure 3).

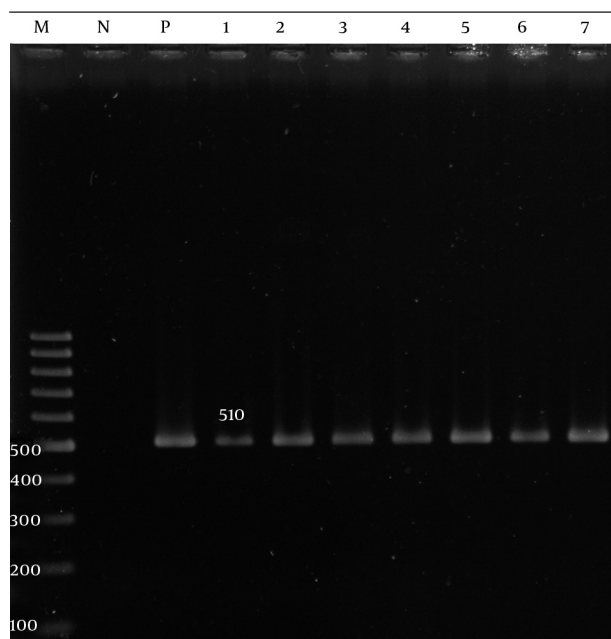
### 4.4. Mortality Rate

The mortality rate due to *A. baumannii* infection was 5 (8.3%) among the hospitalized burn patients.

## 5. Discussion

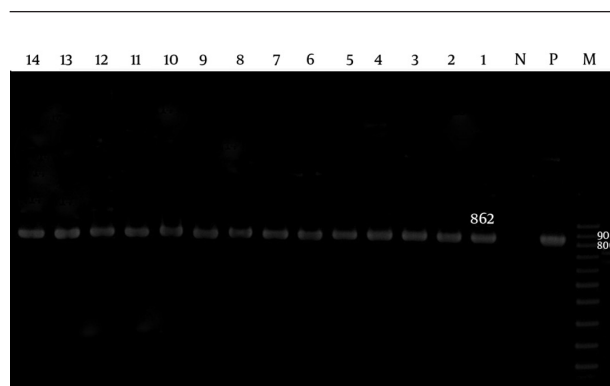
Infection can lead to the deterioration of the burn healing process and severe systemic complications and is the leading cause of mortality and morbidity in patients (19). *A. baumannii* is an opportunistic pathogen that is particularly successful at colonizing and persisting in the hospital environment. It is also able to resist desiccation and survive on inanimate surfaces for months (4). The isolation of *A. baumannii* strains from burn centers is frequent and has been reported by various global studies, including one from Iran (20). In the present study, the resistance rates of the isolates were as follows: 60 (100%) to co-trimoxazole, cefotaxime, cefepime, meropenem, ciprofloxacin, ceftriaxone, piperacillin/Tazobactam, ceftazidime, and piperacillin; 58 (97%) to imipenem; 56 (94%) to gentamicin; 50 (81%) to amikacin; 45 (76%) to tetracycline; and 0 (0%) to colistin. Accordingly, the best coverage against the study isolates was obtained with *colistin*. Various studies have clearly demonstrated that the incidence of resistant *A. baumannii* strains is on the increase worldwide (20).

**Figure 1.** Polymerase Chain Reaction Amplification of the *adeA* Gene of the *A. baumannii* Isolates



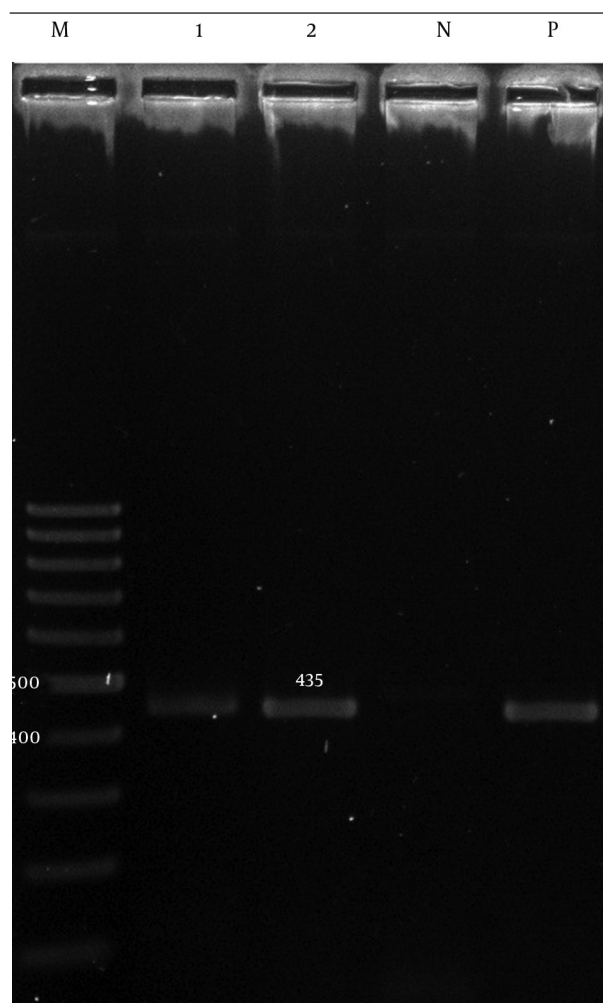
Lane M, 100 bp DNA size marker; Lane P, *A. baumannii* ATCC19606 positive control; Lane N, negative control; Lane 1 - 7, *adeA* gene positive isolate.

**Figure 2.** Polymerase Chain Reaction Amplification of the *adeB* Gene of the *A. baumannii* Isolates



Lane M, 100 bp DNA size marker; Lane P, *A. baumannii* ATCC19606 positive control; Lane N, negative control; Lane 1 - 14, *adeB* gene positive isolate.

**Figure 3.** Polymerase Chain Reaction Amplification of the *adeC* Gene of the *A. baumannii* Isolates



Lane M, 100 bp DNA size marker; Lane P, *A. baumannii* ATCC19606 positive control; Lane N, negative control; Lane 1 and 2, *adeC* gene positive isolate.

These studies have also shown that the resistance of these strains is not only against B-lactamases, including carbapenems and the third generation of cephalosporins, but also against other drug divisions such as fluoroquinolones and aminoglycosides. The other importance of these bacteria is related to their multi-drug resistance, which restricts their treatment. Mohajeri et al. reported that all the isolates in their study were resistant to imipenem and meropenem as well as to other antimicrobial agents (21). Shahcheraghi et al. (2011) determined that 12% of the *A. baumannii* isolates in their investigation were resistant to colistin (13). Fallah et al. reported that the resistance rate of the *A. baumannii* strains to colistin in their research was 2 (1.8%) (20). Therefore, colistin can be helpful in treating *A. baumannii*-related infections in burn patients. Efflux pump systems are an extremely important cause of multi-drug resistance (22). Although high level resistance may not occur as a result of multidrug efflux pumps alone, the overexpression association of these genes among MDR isolates cannot be ignored. Efflux pump inhibitors have been shown to reverse multi-drug resistance in *A. baumannii* and other bacteria (23).

The effects of these compounds such as the PABN on the antimicrobial susceptibility have been examined in some studies. Valentine et al. found that the addition of the PABN at a final concentration of 100 µg/ml greatly reduced the MIC of ciprofloxacin from 2- to 8-fold (16). Pan Hou et al. noted that after exposure to the efflux pump inhibitor, the PABN, a 4- to 32-fold reduction in the MICs of imipenem was observed in 33 (66%) isolates of imipenem-resistant *A. baumannii* (24). Szabo et al. reported that the addition of the PaBN at different concentrations reduced the MICs of various antibiotics (17). We observed that the imipenem susceptibility of most of the isolates was increased in the presence of the PABN by 4- to 64-fold. The results suggest that multi-drug efflux pumps play a role in the mechanism of the resistance in *A. baumannii* strains. It has recently been reported that resistance to antibiotics is due to the overexpression of the AdeABC pump (10). In the current study, the *adeA* and *adeB* were detected in 60 (100%) of the isolates, while the *adeC* was detected in 51 (85%) isolates. The AdeABC operon is present in 80% (from 53% to 97%) of *A. baumannii* strains (25). The mortality rate in the present study was 8.3%. Vahdani et al. reported that the mortality rate caused by the *A. baumannii* strains in their study was 26%. Other researchers have reported a wide range of mortality from 7% to 43% (26).

The results of the present study indicate that the antibiotic efflux pump has a role in conferring resistance to antibiotics in *A. baumannii* isolates. Thus, efforts should be aimed at detecting such resistant *A. baumannii* along with their resistance mechanisms. Moreover, further research is needed to find more suitable and effective therapies against *A. baumannii* isolates and since the available data support the development of efflux pump inhibitors for use in combination with antibiotics, it is advisable that the cytotoxicity and mutagenicity of inhibitors in future studies be evaluated.

## Acknowledgements

This study was done by a grant awarded by Shahid Beheshti university of medical sciences, Tehran, Iran. The paper is part of an M.Sc. thesis on microbiology presented at Shahid Beheshti university of medical sciences, Tehran, Iran (registration # 228).

## Authors' Contributions

The core idea of this work came from Mojdeh Hakemi-Vala. Hossein Goudarzi was an advisor in the project and contributed to the analysis of the data. Mehrdad Gholami collected the data, cultured the samples, and performed the molecular tests and also wrote the manuscript in collaboration with Ali Hashemi. Masoumeh Hallajzadeh assisted in sample collection.

## Funding/Support

This work was financially supported by microbiology department of Shahid Beheshti University of Medical Sciences, Tehran, Iran.

## References

1. Shields RK, Clancy CJ, Gillis LM, Kwak EJ, Silveira FP, Massih RC, et al. Epidemiology, clinical characteristics and outcomes of extensively drug-resistant *Acinetobacter baumannii* infections among solid organ transplant recipients. *PLoS One*. 2012;7(12):e52349.
2. Tan SY, Chua SL, Liu Y, Hoiby N, Andersen LP, Givskov M, et al. Comparative genomic analysis of rapid evolution of an extreme-drug-resistant *Acinetobacter baumannii* clone. *Genome Biol Evol*. 2013;5(5):807-18.
3. Zhu L, Yan Z, Zhang Z, Zhou Q, Zhou J, Wakeland EK, et al. Complete genome analysis of three *Acinetobacter baumannii* clinical isolates in China for insight into the diversification of drug resistance elements. *PLoS One*. 2013;8(6):e66584.
4. Loehfelm TW, Luke NR, Campagnari AA. Identification and characterization of an *Acinetobacter baumannii* biofilm-associated protein. *J Bacteriol*. 2008;190(3):1036-44.
5. Howard A, O'Donoghue M, Feeney A, Sleator RD. *Acinetobacter baumannii*: an emerging opportunistic pathogen. *Virulence*. 2012;3(3):243-50.
6. Chen Y, Zhou Z, Jiang Y, Yu Y. Emergence of NDM-1-producing *Acinetobacter baumannii* in China. *J Antimicrob Chemother*. 2011;66(6):1255-9.
7. Peleg AY, Seifert H, Paterson DL. *Acinetobacter baumannii*: emergence of a successful pathogen. *Clin Microbiol Rev*. 2008;21(3):538-82.
8. Opazo AC, Mella SM, Dominguez MY, Bello HT, Gonzalez GR. [Multi-drug efflux pumps and antibiotic resistance in *Acinetobacter baumannii*]. *Rev Chilena Infectol*. 2009;26(6):499-503.
9. Wiczorek P, Sacha P, Hauschild T, Zorawski M, Krawczyk M, Trzyniewska E. Multidrug resistant *Acinetobacter baumannii*-the role of AdeABC (RND family) efflux pump in resistance to antibiotics. *Folia Histochem Cytobiol*. 2008;46(3):257-67.
10. Marchand I, Damier-Piolle L, Courvalin P, Lambert T. Expression of the RND-type efflux pump AdeABC in *Acinetobacter baumannii* is regulated by the AdeRS two-component system. *Antimicrob Agents Chemother*. 2004;48(9):3298-304.
11. Richmond GE, Chua KL, Piddock LJ. Efflux in *Acinetobacter baumannii* can be determined by measuring accumulation of H33342 (bis-benzamide). *J Antimicrob Chemother*. 2013;68(7):1594-600.
12. Lamers RP, Cavallari JF, Burrows LL. The efflux inhibitor phenylalanine-arginine beta-naphthylamide (PAbetaN) permeabilizes the outer membrane of gram-negative bacteria. *PLoS One*. 2013;8(3):e60666.

13. Shahcheraghi F, Abbasalipour M, Feizabadi M, Ebrahimipour G, Akbari N. Isolation and genetic characterization of metallo-beta-lactamase and carbapenamase producing strains of *Acinetobacter baumannii* from patients at Tehran hospitals. *Iran J Microbiol.* 2011;**3**(2):68-74.
14. Goudarzi H, Douraghi M, Ghalavand Z, Goudarzi M. Assessment of antibiotic resistance pattern in *Acinetobacter baumannii* carrying bla oxA type genes isolated from hospitalized patients. *Novelty Biomed.* 2013;**1**(2):54-61.
15. Cockerill FR, Clinical Laboratory Standards Institute. *Performance standards for antimicrobial susceptibility testing: twenty-second informational supplement; [... provides updated tables for... M02-A11 and M07-A9]*. N C Clin Lab S; 2012.
16. Valentine SC, Contreras D, Tan S, Real LJ, Chu S, Xu HH. Phenotypic and molecular characterization of *Acinetobacter baumannii* clinical isolates from nosocomial outbreaks in Los Angeles County, California. *J Clin Microbiol.* 2008;**46**(8):2499-507.
17. Szabo D, Silveira F, Hujer AM, Bonomo RA, Hujer KM, Marsh JW, et al. Outer membrane protein changes and efflux pump expression together may confer resistance to ertapenem in Enterobacter cloacae. *Antimicrob Agents Chemother.* 2006;**50**(8):2833-5.
18. Snelling AM, Gerner-Smidt P, Hawkey PM, Heritage J, Parnell P, Porter C, et al. Validation of use of whole-cell repetitive extragenic palindromic sequence-based PCR (REP-PCR) for typing strains belonging to the *Acinetobacter calcoaceticus*-*Acinetobacter baumannii* complex and application of the method to the investigation of a hospital outbreak. *J Clin Microbiol.* 1996;**34**(5):1193-202.
19. Leseva M, Arguirova M, Nashev D, Zamfirova E, Hadzhyiski O. Nosocomial infections in burn patients: etiology, antimicrobial resistance, means to control. *Ann Burns Fire Disasters.* 2013;**26**(1):5-11.
20. Fallah F, Noori M, Hashemi A, Goudarzi H, Karimi A, Erfanimanesh S, et al. Prevalence of bla NDM, bla PER, bla VEB, bla IMP, and bla VIM Genes among *Acinetobacter baumannii* Isolated from Two Hospitals of Tehran, Iran. *Scientifica (Cairo).* 2014;**2014**:245162.
21. Mohajeri P, Farahani A, Feizabadi MM, Ketabi H, Abiri R, Najafi F. Antimicrobial susceptibility profiling and genomic diversity of *Acinetobacter baumannii* isolates: A study in western Iran. *Iran J Microbiol.* 2013;**5**(3):195-202.
22. Taherpour A, Hashemi A. Detection of OqxAB efflux pumps, OmpK35 and OmpK36 porins in extended-spectrum-beta-lactamase-producing *Klebsiella pneumoniae* isolates from Iran. *Hippokratia.* 2013;**17**(4):355-8.
23. Ardebili A, Talebi M, Azimi L, Rastegar Lari A. Effect of Efflux Pump Inhibitor Carbonyl Cyanide 3-Chlorophenylhydrazone on the Minimum Inhibitory Concentration of Ciprofloxacin in *Acinetobacter baumannii* Clinical Isolates. *Jundishapur J Microbiol.* 2014;**7**(1):e8691.
24. Hou PF, Chen XY, Yan GF, Wang YP, Ying CM. Study of the correlation of imipenem resistance with efflux pumps AdeABC, AdeIJK, AdeDE and AbeM in clinical isolates of *Acinetobacter baumannii*. *Chemotherapy.* 2012;**58**(2):152-8.
25. Coyne S, Courvalin P, Perichon B. Efflux-mediated antibiotic resistance in *Acinetobacter* spp. *Antimicrob Agents Chemother.* 2011;**55**(3):947-53.
26. Vahdani P, Yaghoubi T, Aminzadeh Z. Hospital acquired antibiotic-resistant *acinetobacter baumannii* infections in a 400-bed hospital in Tehran, Iran. *Int J Prev Med.* 2011;**2**(3):127-30.