


RESEARCH ARTICLE

Open Access



# Toll-like receptor 5-mediated IL-17C expression in intestinal epithelial cells enhances epithelial host defense against F4<sup>+</sup> ETEC infection

Yu Luo<sup>1\*</sup> , Jia Xu<sup>1</sup>, Chaoying Zhang<sup>1</sup>, Chunyan Jiang<sup>1</sup>, Yanfeng Ma<sup>1</sup>, Haijian He<sup>1</sup>, Yuan Wu<sup>1</sup>, Bert Devriendt<sup>2</sup>, Eric Cox<sup>2</sup> and Hongbin Zhang<sup>1</sup>

## Abstract

Enterotoxigenic *Escherichia coli* (ETEC) are an important cause of post-weaning diarrhea (PWD) in piglets. The IL-17 cytokine family is well known to play important roles in the host defense against bacterial infections at the mucosa. Previously, we reported the potential role of IL-17A in clearing an ETEC infection in piglets. IL-17C, another member of the IL-17 family, is highly expressed in the intestinal epithelium, however, its role during an ETEC infection is still unclear. In this study, we demonstrate that F4<sup>+</sup> ETEC induce IL-17C mRNA and protein expression in intestinal tissues as well as in porcine intestinal epithelial cells (IPEC-J2). This IL-17C production is largely dependent on TLR5 signaling in IPEC-J2 cells. Both F4<sup>+</sup> ETEC infection and exogenous IL-17C increased the expression of antimicrobial peptides and tight junction proteins, such as porcine beta-defensin (pBD)-2, claudin-1, claudin-2 and occludin in IPEC-J2 cells. Taken together, our data demonstrate that TLR5-mediated IL-17C expression in intestinal epithelial cells enhances mucosal host defense responses in a unique autocrine/paracrine manner in the intestinal epithelium against ETEC infection.

## Introduction

The importance of the IL-17 cytokine family in inflammation and autoimmunity is well recognized. This family consists of six members: IL-17A, IL-17B, IL-17C, IL-17D, IL-17E (also called IL-25) and IL-17F [1]. These cytokines bind to heterodimeric complexes composed of members of the IL-17 family of receptors: IL-17 receptor (IL-17R) A, IL-17RB, IL-17RC, IL-17RD, and IL-17RE, to elicit their biological effects [2]. IL-17A and IL-17F have been well studied and have been shown to be mainly expressed by a distinct T cell subset, T helper type 17 cells. IL-17A/F initiates innate host defenses and repair responses that include the induction of proinflammatory cytokines and chemokines, antimicrobial peptides and

proteins, such as  $\beta$ -defensin, calprotectin and cathelicidins [3]. In contrast to IL-17A/F, the biological function of IL-17C and the molecular mechanisms regulating IL-17C expression are less well investigated. Similar to IL-17A and IL-17F, IL-17C also seems to mediate inflammatory processes and has been detected in lung and skin tissues after bacterial infection as well as in the colon of inflammatory bowel disease patients [4–6]. Notably, IL-17C and its receptor IL-17RE are preferentially expressed in epithelial cells lining the mucosa and play an essential role in the host mucosal defense against microbial infection by triggering the production of chemokines, inflammatory mediators as well as antimicrobial peptides [7–9]. Despite its potential role in inflammation and host defense, the function of IL-17C in pigs remains poorly understood.

F4<sup>+</sup> enterotoxigenic *E. coli* (ETEC) is one of the most common causes of diarrhea in neonatal and recently weaned piglets [10, 11], resulting in considerable morbidity and mortality. Intestinal epithelial cells (IECs) are

\*Correspondence: luoyu@jhc.cn

<sup>1</sup> Animal Medical Testing Center, Department of Animal Production, Faculty of Agricultural & Biological Engineering, Jinhua Polytechnic, Jinhua, China

Full list of author information is available at the end of the article



the first cells encountering intestinal pathogens and not only form a physical barrier preventing passage of macromolecules and pathogens to the underlying tissues, but also sense and detect pathogen-associated molecular patterns (PAMPs) through pathogen-recognition receptors (PRRs), such as Toll-like receptors (TLRs), to initiate the innate immune response [12]. Porcine IECs have been shown to express several TLRs and to enhance cytokine mRNA expression upon pathogen or PAMP stimulation [13]. Few studies have examined the TLR mediated cytokine response at intestinal sites to ETEC infection [14–16]. In our previous study, IL-17A, IL-17B, IL-17F and other cytokines were detected in the intestinal tissues of F4<sup>+</sup>ETEC infected piglets, suggesting a role in host defense against infection [17]. However, despite its presence at the intestinal epithelium, it is unclear whether or how IL-17C is involved during acute ETEC infection. Moreover, there is no information on how IL-17C is induced by these pathogens.

Thus, in the present study, we addressed if an F4<sup>+</sup> ETEC infection can induce IL-17C production in intestinal tissues/epithelial cells and determined whether and which type of TLR mediates the expression of IL-17C. In addition, we further demonstrated the role of IL-17C in epithelial host defense by analyzing the expression profile of host defense genes/proteins.

## Materials and methods

The methodology of the animal experiment was approved by the Ethical Committee of Jinhua Polytechnic (ECJHC2016-1010). Experiments were performed in accordance with the Regulations for the Administration of Affairs Concerning Experimental Animals approved by the State Council of the People's Republic of China. F4 receptor-positive (F4R<sup>+</sup>) piglets (7–8 weeks old, Landrace) were selected and purchased from MEBOLO swine breeding Co., Ltd (Jinhua, China) based on the MUC4 TaqMan assay as previously described [18].

### Bacterial strains, cell line and culture conditions

The ETEC reference strain C83901 (O8:K87:F4ab, LT<sup>+</sup>, expression of flagellin, China Veterinary Culture Collection Center) and the non-pathogenic *E. coli* strain HB101 (no flagella, China General Microbiological Culture Collection Center) were cultured as previously described with minor modifications [19]. Briefly, the frozen bacteria were first recovered on a Brain Heart Infusion (BHI, Oxoid, Hampshire, UK) agar plate and then bacterial colonies of each strain were transferred into LB media and grown overnight with continuous agitation (180 rpm) at 37 °C. The porcine intestinal epithelial cell line IPEC-J2 (purchased from Guangzhou Jennio Biotech Co., Ltd, Guangzhou, China) was grown in Dulbecco's Modified

Eagle's Medium/F12 (DMEM/F12 1:1; Thermo Fisher Scientific, Waltham, MA, USA) supplemented with 5% fetal calf serum (FCS, Sijiqing Biotech, Hangzhou, China), 2 mM L-glutamine (Thermo Fisher Scientific), 1 × Insulin/Transferrin/Selenium (ITS, Sigma-Aldrich, St. Louis, MO, USA), 100 U/mL penicillin and 100 µg/mL streptomycin (Thermo Fisher Scientific) and 5 ng/mL human epidermal growth factor (EGF, Thermo Fisher Scientific) at 37 °C and 5% CO<sub>2</sub> in T75 cell culture flasks in a humidified atmosphere. These cells were seeded in a 24-well cell culture plate (5 × 10<sup>5</sup> cells/well) and maintained in IPEC-J2 culture medium for up to 72 h until 100% confluent. Next, the culture medium was replaced with IPEC-J2 culture medium without FSC (differentiation medium) and further cultured for 48 h to induce differentiation.

### Small intestinal segment perfusion (SISP)

Three piglets were used to analyze the early immune response after ETEC infection. SISP experiments were performed essentially as previously described [19]. Three small intestinal segments from mid-jejunum were randomly perfused with 2.5 × 10<sup>9</sup> CFU of the bacterial strain C83901, HB101 or PBS. In total, each segment was perfused with 32 mL of perfusion fluid over 4 h by injecting 2 mL every 15 min. Then, piglets were euthanized with an overdose sodium pentobarbital (Aspen, Wuhan, China) and a small piece of tissue of each segment was sampled, embedded in RNA later (Sigma-Aldrich), and stored at room temperature until RNA isolation.

### Bacterial inoculum and treatments

Prior to bacterial inoculation, IPEC-J2 monolayers were gently washed three times with sterile PBS and cultured in differentiation medium without antibiotics for 2 h at 37 °C, 5% CO<sub>2</sub>, 90% humidity. Then, the cells were inoculated with different bacterial strains (5 × 10<sup>7</sup> CFU/well, MOI=100) in antibiotic-free differentiation medium and incubated at 37 °C, 5% CO<sub>2</sub> in a humidified atmosphere. After 1 h of incubation, cells were lysed in 1 mL TRIzol Reagent (Thermo Fisher Scientific) immediately after aspiration of the culture medium or further cultured for 1 h, 3 h and 24 h in differentiation medium supplemented with 50 µg/mL gentamycin (Thermo Fisher Scientific) after 3 times washing with PBS to remove non-adherent bacteria. Subsequently, cells were harvested and resuspended in TRIzol Reagent or directly lysed in RIPA lysis buffer (P0013, Beyotime, Shanghai, China) for Western blotting. The cell supernatants were collected and stored at −80 °C. To assess protein expression, cells on coverslips were fixed with 4% paraformaldehyde for 5 min at RT and stained with anti-IL-17C (1:1000, rabbit pAb, ab153896, Abcam, Cambridge, UK), anti-claudin-1

(1:500, rabbit pAb, 51-9000, Thermo Fisher Scientific) and anti-claudin-2 (1:300, mouse mAb, 32-5600, Thermo Fisher Scientific). Then, the sections were washed and incubated with the secondary antibody in different combination including FITC conjugated goat anti-rabbit IgG (H+L) (10 µg/mL, Thermo Fisher Scientific), Texas Red-X conjugated goat anti-mouse IgG (H+L) and FITC conjugated goat anti-mouse IgG (H+L) (10 µg/mL, Thermo Fisher Scientific) at RT for 1.5 h. The nuclei were counterstained with Hoechst (10 µg/mL, Sigma-Aldrich) and the slides were mounted in glycerol containing 0.223 M 1,4-diazobicyclo-(2,2,2)-octane (Sigma-Aldrich) and imaged on a confocal microscope (Leica TCS SP8 MP, Germany).

### Inhibitor, flagellin and cytokine treatments

Two hours before bacterial inoculation, IPEC-J2 monolayers were incubated with 0.5 µM oligodeoxyribonucleotide (ODN 2088, Miltenyi Biotec, Bergisch Gladbach, Germany; blocks TLR7/8/9 signaling as described previously [20, 21]), TH1020 (SML1741, Sigma-Aldrich, inhibits TLR5 signaling as described previously [22]), 20 or 40 ng/mL IL-17C (MyBioSource, San Diego, CA, USA) and then inoculated for 24 h with the different bacterial strains as described above. As flagellin has been reported to induce IL-17C production in several epithelial cells [7, 23, 24], IPEC-J2 monolayers were also stimulated with flagellin (100 ng/mL, FLA-ST Ultrapure, Invivogen, San Diego, CA, USA) in the presence or absence of TH1020. Then, the cells and/or culture supernatant were collected at 4 h and 24 h post stimulation, respectively. Subsequently, cells were harvested and resuspended in TRIzol Reagent or directly lysed in RIPA lysis buffer for Western blotting. The cell supernatants were collected and stored at -80 °C for later use.

As TH1020 and ODN 2088 were dissolved in DMSO and TE buffer, respectively, the toxic effects of these two solvents on IPEC-J2 monolayers were also investigated during the long incubation times using the propidium iodide (PI, Beyotime) assay. Briefly, IPEC-J2 monolayers were cultured at 24-well plates at a density of  $5 \times 10^5$  cells per well. The cells were then treated with TH1020 and ODN 2088 at 0.5 and 5 µM and incubated in 5% humidified carbon dioxide at 37 °C for 24 h. An aliquot of 1 µL of 500 µg/mL PI was added to each well and incubated for 60 min at room temperature. The fluorescence was measured using a multi-detection microplate reader (FLUOstar Omega, BMG LABTECH, Germany) with an excitation wavelength of 544 nm and an emission wavelength of 612 nm. In the first 60-min incubation period, measurements were taken at 15-min intervals to obtain a background level for the PI solution in the untreated cells. Then, measurements were

taken at 30-min intervals for 23 h. At the end of the 24 h, EtOH (100%) was added to each well in order to induce maximal death, and the maximal PI fluorescence were taken afterwards. Cell viability determined using PI was calculated as a percentage of viable cells as follows:

% cell viability

$$= 100\% - \frac{[\text{PIem of test} - \text{PIem of background}] \times 100\%}{\text{PIem of maximum death level induced by EtOH}}$$

PIem = propidium iodide fluorescence emission, the experiment was carried out in 4 replicates on three independent batches of cells.

### Transepithelial electrical resistance assays

To further investigate the role of IL-17C on the barrier function of IPEC-J2 cells, collagen-coated 6-well transwell inserts were used to induce polarization of the monolayers (pore size 0.4 µm; surface area 4.67 cm<sup>2</sup>; Corning, New York, NY, USA) as described before [16]. Briefly, IPEC-J2 cells were seeded at a density of  $5.0 \times 10^5$  cells/well/mL on the transwell inserts and incubated in culture medium for 24 h. Then, the apical medium in the upper compartment was refreshed. The culture medium was refreshed every 2 days until the cells were roughly 80% confluent. Then, the medium was replaced by differentiation medium. To monitor differentiation, transepithelial electrical resistance (TEER) values were measured daily using the Millicell Electrical resistance system (Millipore, Billerica, MA, USA) until they reached 4000 Ω cm<sup>2</sup>.

Differentiated IPEC-J2 cells were subsequently incubated in triplicate either with the different bacterial strains (HB101 and C83901,  $1.3 \times 10^8$  CFU/transwell, MOI ≈ 100) or IL-17C (20 ng/mL) for 1 h at 37 °C in a humidified atmosphere. Then, the bacteria were removed by washing three times with sterile PBS. The IPEC-J2 monolayers were further incubated for another 1 h, 3 h and 23 h in differentiation medium supplemented with 50 µg/mL gentamycin. During this period, the epithelial integrity was determined by measuring the TEER every 2 h until 12 h post-incubation and at 24 h post-incubation. Cells for the different bacterial or IL-17C stimuli were taken after 2 h and 4 h post incubation and resuspended in TRIzol Reagent and stored at -80 °C for later use. Meanwhile, cells on the membranes were fixed and stained with anti-occludin (1:100, rabbit pAb, 71-1500, Thermo Fisher Scientific) for cellular visualization of this TJ in the differentiated IPEC-J2 cells as described above. The cell medium from the apical and basolateral compartment were collected at the end of the experiment and stored at -80 °C until further processing.

### RNA extraction and cDNA synthesis

RNA was isolated from intestinal tissues and IPEC-J2 cells using TRIzol Reagent as described [17]. The RNA concentration and purity was measured and calibrated using a NanoDrop Spectrophotometer (Wilmington, DE, USA) to an OD<sub>260</sub>/OD<sub>280</sub> ratio of 1.8–2.0 and OD<sub>260</sub>/OD<sub>230</sub> ratio of 1.9–2.1, and the RNA integrity was evaluated by agarose gel electrophoresis. Only high quality RNA was used for further processing. Total RNA (1 µg) was reverse transcribed using Superscript™ III Reverse Transcriptase (200 U; Invitrogen, Carlsbad, CA, USA) and random primers (7.5 ng/µL; Invitrogen). To check the synthesis of amplifiable cDNA in the reverse transcription, a conventional PCR step was performed using GAPDH, β-actin and RPL-19 specific primers (Table 1).

### Real-time qPCR

Primers (Table 1) were synthesized by Sangon Biotech (Shanghai, China). The amplification efficiency of all the reactions ranged from 94 to 103%. The PCR products were sequenced and subjected to agarose gel electrophoresis to verify their specificity. cDNA was diluted 8× in DEPC-treated ddH<sub>2</sub>O and combined with primer pairs and SYBR Green PCR Master Mix (Applied Biosystems, Warrington, UK) according to the manufacturer's recommendations. Quantitative PCR (qPCR) assays were run on the StepOnePlus real-time PCR system (Applied Biosystems) with the following cycling conditions: 95 °C for 3 min, followed by 40 cycles of denaturation at 95 °C for 15 s, annealing for 30 s and elongation at 72 °C for 30 s. Fluorescence acquisition was measured at 72 °C and melting curve analysis was done at 65–95 °C with continuous fluorescence acquisition. GAPDH, β-actin and RPL-19 were selected as reference genes because of their stability [17]. All reactions were performed in triplicate and relative gene transcription values were calculated using the  $2^{-\Delta\Delta C_t}$  method and normalized against these three selected reference genes [25].

### Western blot assays

The concentration of total protein in the cell lysates was determined with a bicinchoninic acid (BCA) protein assay kit (Thermo Fisher Scientific) according to the manufacturer's instructions. Equal amounts of heat-denatured total protein (50 µg) in sample buffer were separated by SDS-PAGE (12%) and transferred onto PVDF membrane (Bio-Rad, Hercules, CA, USA) at 90 V for 45 to 60 min. After blocking with 5% non-fat milk powder in blocking buffer at room temperature for 1 h, membranes were incubated with primary antibody overnight at 4 °C. The primary antibodies used were: anti-β-actin (1:3000, rabbit pAb, ab8227, Abcam), anti-IL-17C (1:1000, rabbit pAb, ab153896, Abcam), anti-TLR5 (1:50,

clone H127, Santa-Cruz Biotechnology, Santa Cruz, CA, USA), anti-porcine beta-defensin 2 (anti-pBD-2, rabbit pAb, CLOUD-CLONE CORP, Wuhan, China), anti-claudin-1 (1:250, rabbit pAb, 51-9000, Thermo Fisher Scientific), anti-claudin-2 (1:250, rabbit pAb, 51-6100, Thermo Fisher Scientific), anti-occludin (1:100, rabbit pAb, 71-1500, Thermo Fisher Scientific). After being washed extensively to eliminate aspecific binding, the membranes were incubated with a horseradish peroxidase-conjugated secondary antibody (anti-rabbit IgG, Santa-Cruz Biotechnology) at room temperature for 30 min. The antibody-reactive bands were visualized using chemiluminescence (Tanon 5200, Shanghai, China).

### Cytokine ELISA

The secretion of IL-17C in cell-free supernatants was measured using commercial ELISA kits (MyBioSource) according to the manufacturer's guidelines. The IL-8 and TNF-α concentrations were assessed in both the apical and basolateral medium with porcine-specific ELISA kits (TNF-α: #PTA00; IL-8: # P8000; R&D Systems, Minneapolis, MN, USA) according to the manufacturer's guidelines. All assays were performed in triplicate and the data are shown as mean ± SD.

### Statistical analysis

Statistical analysis was performed with the Mann–Whitney U test or Kruskal–Wallis test for the independent samples and Friedman's Two-Way Analysis for the related samples in the SPSS 22 software package. The significance level was set at  $p < 0.05$ .

## Results

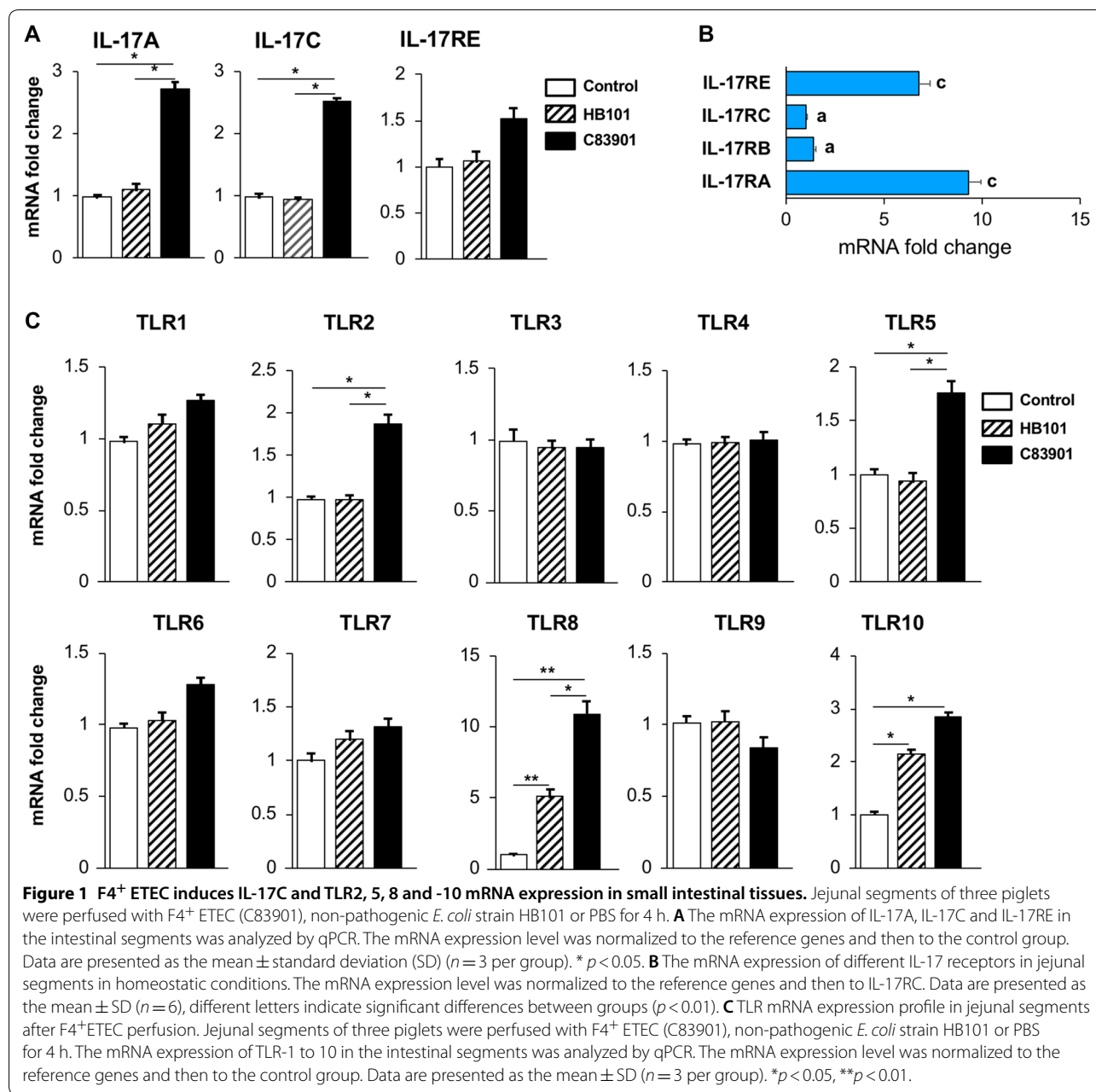
### F4<sup>+</sup> ETEC induces IL-17C and TLR2, 5, 8 and -10 mRNA expression in small intestinal tissues

Previously, we showed that the F4<sup>+</sup>ETEC strain GIS26 (O149:K91:F4ac<sup>+</sup>, LT<sup>+</sup>STa<sup>+</sup>STb<sup>+</sup>) elicited IL-17A mRNA expression in small intestinal tissues [19], so we first determined if another F4<sup>+</sup>ETEC strain, C83901 (O8:K87:F4ab, LT<sup>+</sup>, STb<sup>+</sup>), can also induce a similar response. Here, we found that C83901 induced IL-17A mRNA expression in the jejunal segments (Figure 1A). Similarly, IL-17C transcripts were also increased post challenge (Figure 1A), while no difference was found in the tissues perfused with the nonpathogenic *E. coli* strain HB101. The mRNA expression of the IL-17C receptor IL-17RE was not significantly altered by either HB101 or C83901 perfusion. However, jejunal segments displayed high constitutive IL-17RA and IL-17RE mRNA levels as compared to the other receptor subunits of IL-17 cytokines (IL-17RD not detected) (Figure 1B).

Given that IL-17C expression has been associated with TLR signaling [7, 23, 26], we determined the mRNA

**Table 1** List of the primers used in the qPCR assay

Gene	Sequence (5' → 3')	Size (bp)	Ta (°C)	References
IL-17A	F: ACTCCAACGCTTCACCTCAC R: AGCCCACTGTCACCATCACTT	234	58	[17]
IL-17C	F: CGTGTGGACACGGATGAGAG R: GGATGAACTCGGCGTGGAAG	217	60	Present study
IL-17RE	F: CCCAGATTCCTCGCCATACC R: CCTGGCAACAGATACAGGCA	106	60	Present study
TLR1	F: AGATTTCGTGCCACCCTATG R: CCTGGGGGATAAACAATGTG	277	55	[50]
TLR2	F: TGCTATGACGCTTTCGTGTC R: CGATGGAGTCGATGATGTTG	163	55	
TLR3	F: GAGCAGGAGTTTGCCTTGTC R: GGAGGTCATCGGGTATTGGA	149	55	
TLR4	F: TCATCCAGGAAGGTTCCAC R: TGTCCTCCCACTCCAGGTAG	234	55	
TLR5	F: GGTCCTGCCTCAGTATCAA R: TGTTGAGAAACCAGCTGACG	114	55	
TLR6	F: TCAAGCATTGGACCTCTCA R: TTCCAAATCCAGAAGGATGC	170	58	
TLR7	F: TCTGCCCTGTGATGTCAGTC R: GCTGGTTTCCATCCAGGTAA	317	55	
TLR8	F: CTGGGATGCTTGGTTTACATCT R: CATGAGGTTGTCGATGATGG	241	55	
TLR9	F: AGGGAGACCTCTATCTCCGC R: AAGTCCAGGGTTTCCAGCTT	205	55	
TLR10	F: GCCCAAGGATAGGCGTAAAT R: CTCGAGACCCCTTATTGAGC	128	55	
pBD-2	F: CTGTCTGCCTCCTCTTCC R: CAGGTCCTTCAATCCTGTT	168	60	[51]
Claudin-1	F: ACCCGCACTACGTCACCTTC R: GGCAGGACACCTGGTCATTG	146	60	Present study
Claudin-2	F: AGAAGTTTCAAAGCCTGGGAG R: TCAACCTCATAACAGGGCAAA	119	60	[52]
Occludin	F: GTGGTAACTTGGAGGCGTCTTC R: CCGTCGTGTAGTCTGTCTCGTA	102	58	[53]
ZO-1	F: AAGGATGTTTACCGTCGCATT R: ATTGGACACTGGCTAACTGCT	253	60	
TNF-α	F: GCATGGTGGTGGTTGTTTCTGACGAT R: GCTTCTGTTGGACACCTGGAGACA	99	60	
IL-8	F: TCTCGGTGTAGAGCAAGG R: TTCCCAAAGTGCTGGTATT	146	58	
β-Actin	F: TCATCACCATCGGCAACG R: TTCTGATGTCCACGTCGC	133	60	[54]
GAPDH	F: GGGCATGAACCATGAGAAGT R: AAGCAGGATGATGTTCTGG	230	60	[55]
RPL19	F: AACTCCCGTCAGCAGATCC R: AGTACCCTTCCGCTTACCG	147	60	[56]

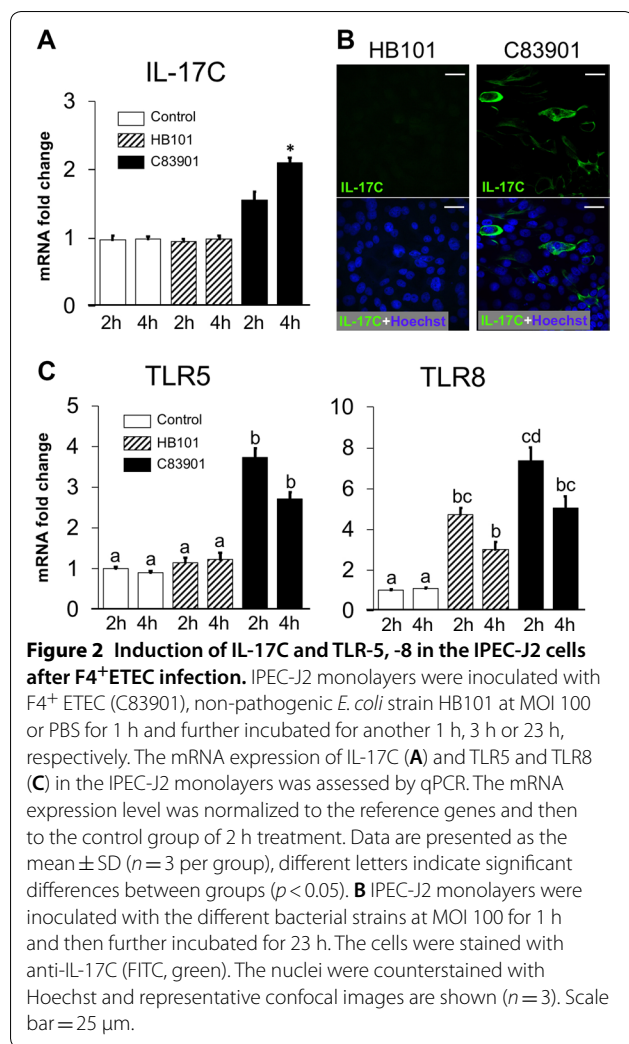


expression of all porcine TLRs from TLR1 to TLR10 upon ETEC perfusion. C83901 significantly increased TLR2, TLR5, TLR8 and TLR10 mRNA levels in the jejunal tissues as compared to control samples (Figure 1C). In contrast, HB101 perfusion only upregulated TLR8 and TLR10 transcript levels as compared to control samples (Figure 1C).

**F4+ ETEC induces IL-17C production and TLR5 and -8 mRNA expression by IPEC-J2**

As it was previously reported that IL-17C is preferentially expressed in IECs [7], we assessed if this IL-17C

induction in the jejunum after C83901 infection also comes from the IECs. Thus, we used the cell line IPEC-J2 (originally isolated from the jejunum of a neonatal piglet) to study the IL-17C response after ETEC infection. Similar to the small intestinal tissues, only C83901 but not HB101 induced IL-17C mRNA expression in IPEC-J2 cells 4 h after infection (Figure 2A). This upregulated IL-17C expression was also confirmed at the protein level (Figure 2B). In addition, we also assayed the mRNA expression of TLRs in IPEC-J2 cells upon ETEC infection. Compared to the SISP model, significant changes



**Figure 2 Induction of IL-17C and TLR-5, -8 in the IPEC-J2 cells after F4<sup>+</sup>ETEC infection.** IPEC-J2 monolayers were inoculated with F4<sup>+</sup> ETEC (C83901), non-pathogenic *E. coli* strain HB101 at MOI 100 or PBS for 1 h and further incubated for another 1 h, 3 h or 23 h, respectively. The mRNA expression of IL-17C (A) and TLR5 and TLR8 (C) in the IPEC-J2 monolayers was assessed by qPCR. The mRNA expression level was normalized to the reference genes and then to the control group of 2 h treatment. Data are presented as the mean  $\pm$  SD ( $n = 3$  per group), different letters indicate significant differences between groups ( $p < 0.05$ ). B IPEC-J2 monolayers were inoculated with the different bacterial strains at MOI 100 for 1 h and then further incubated for 23 h. The cells were stained with anti-IL-17C (FITC, green). The nuclei were counterstained with Hoechst and representative confocal images are shown ( $n = 3$ ). Scale bar = 25  $\mu$ m.

were only observed for TLR5 and TLR8 mRNA expression by IPEC-J2 cells after C83901 infection, while upregulated TLR8 transcripts were also found in HB101 stimulated IPEC-J2 cells (Figure 2C). In line with the SISP model, the mRNA expression of TLR1, -3, -4, -6, -7 (not detected), and -9 was unaffected by either HB101 or C83901 infection in IPEC-J2 cells (Additional file 1). TLR2 and -10, which increased in the intestinal tissues, remained unchanged in IPEC-J2 cells following either HB101 or C83901 stimulation (Additional file 1).

#### Blocking TLR5 inhibits F4<sup>+</sup> ETEC induced IL-17C expression by IPEC-J2 monolayers

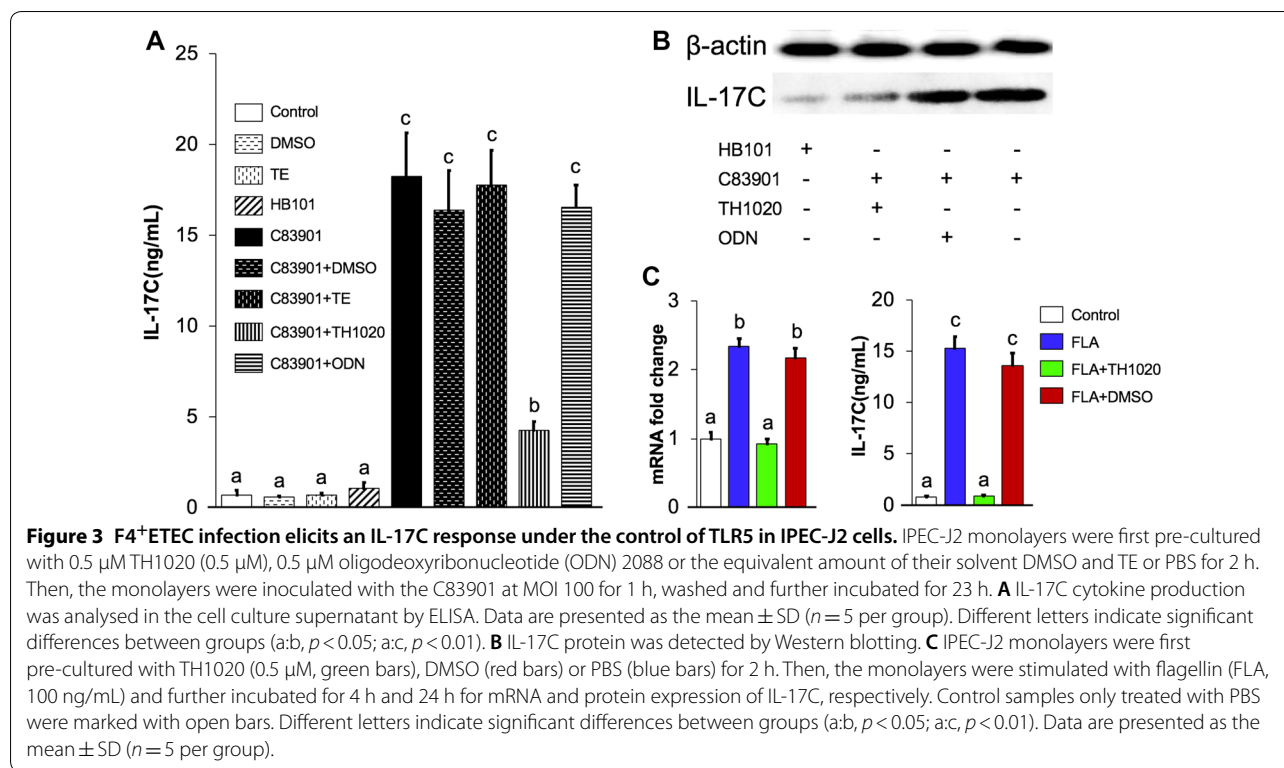
As the upregulation of TLR 5 and -8 correlated with the increase in IL-17C production in both the porcine intestinal tissues and IPEC-J2 cells upon F4<sup>+</sup> ETEC stimulation, in a next effort we wanted to determine which TLR controls IL-17C expression in IECs upon ETEC infection. Given the fact that TLR5 engagement elicits the

expression of IL-17C in human IECs [23], we further elucidated IL-17C expression in the presence of the TLR5 signaling inhibitor TH1020 [22] and oligodeoxyribonucleotides (ODN) 2088, which inhibit TLR7/8/9 signaling [20, 21]. As TH1020 and ODN 2088 were dissolved in DMSO and TE buffer, respectively, the effect of these two solvents on IL-17C production by IPEC-J2 monolayers was also investigated. DMSO and TE buffer had no effect on the induction of IL-17C mRNA (Additional file 2A) or protein in IPEC-J2 cells in the absence and presence of C83901 (Figure 3A). Moreover, the cell viability was unaltered by either TH1020 or ODN 2088 stimulation (Additional file 2B). However, we observed that IL-17C secretion was almost completely abolished by TH1020 in C83901 infected IPEC-J2 cells, showing the important role of TLR5 signaling in triggering IL-17C production by IPEC-J2 cells upon F4<sup>+</sup> ETEC infection (Figures 3A and B). In contrast, no significant change in IL-17C expression was found with ODN 2088 incubation (Figures 3A and B), indicating that the activation of TLR8 signaling after ETEC infection is not responsible for the upregulated IL-17C production in IPEC-J2 cells.

As mentioned above, upon flagellin recognition TLR5 signaling triggers IL-17C production in IECs [7, 23, 24]. Considering flagellin is only produced by C83901 but not by HB101, we made an attempt to ascertain the involvement of flagellin in the TLR5–IL-17C axis. As shown in Figure 3C, a significant upregulation of IL-17C was observed in flagellin stimulated IPEC-J2 cells, which was completely inhibited by the presence of TH1020. These results indicate the direct role of flagellin in regulating the TLR5 mediated IL-17C induction in IPEC-J2 cells during C83901 infection.

#### IL-17C regulates the intestinal epithelial response to ETEC infection

It was previously reported that IL-17C could induce some epithelial cells to express genes that are involved in innate immunity, such as cytokines, chemokines, inflammatory mediators, and antimicrobial peptides [7–9]. To confirm the function of IL-17C on porcine intestinal epithelial cells, IPEC-J2 monolayers were treated with different bacterial strains and harvested for gene expression analysis. As TH1020 was demonstrated to be effective in blocking the TLR5-mediated IL-17C production in IPEC-J2 cells after ETEC infection, TH1020 and IL-17C were also added to the cells as controls. As shown in Figure 4A, C83901 infection stimulated pBD-2, claudin-1 and claudin-2 mRNA expression in IPEC-J2 cells. Adding exogenous IL-17C to the cells replicated these findings. As expected, blocking TLR5 with TH1020 dramatically inhibited pBD-2, claudin-1 and -2 mRNA expression in C83901 infected IPEC-J2 cells. The protein expression



of these three genes was also examined by Western blotting and further confirmed the role of IL-17C and TLR5 signaling in the induction of host defense by IPEC-J2 cells upon ETEC infection (Figure 4B). The differential expression levels of claudin-1 and claudin-2 in ETEC infected IPEC-J2 cells were further analyzed by confocal microscopy. Both claudin-1 and -2 were increased in ETEC infected IPEC-J2 cells: claudin-1 is ubiquitously expressed and localized at tight junctions, while claudin-2 seemed only to be expressed by a subset of cells and was not evenly distributed over the plasma membrane (Figure 4C). Moreover, claudin-2 mostly localized adjacent to tight junctions in uninfected cells (upturned arrowheads, Figure 4C, left panel), while in ETEC infected IPEC-J2 cells its localisation shifted to the cytoplasm (downwards arrowheads, Figure 4C, right panel).

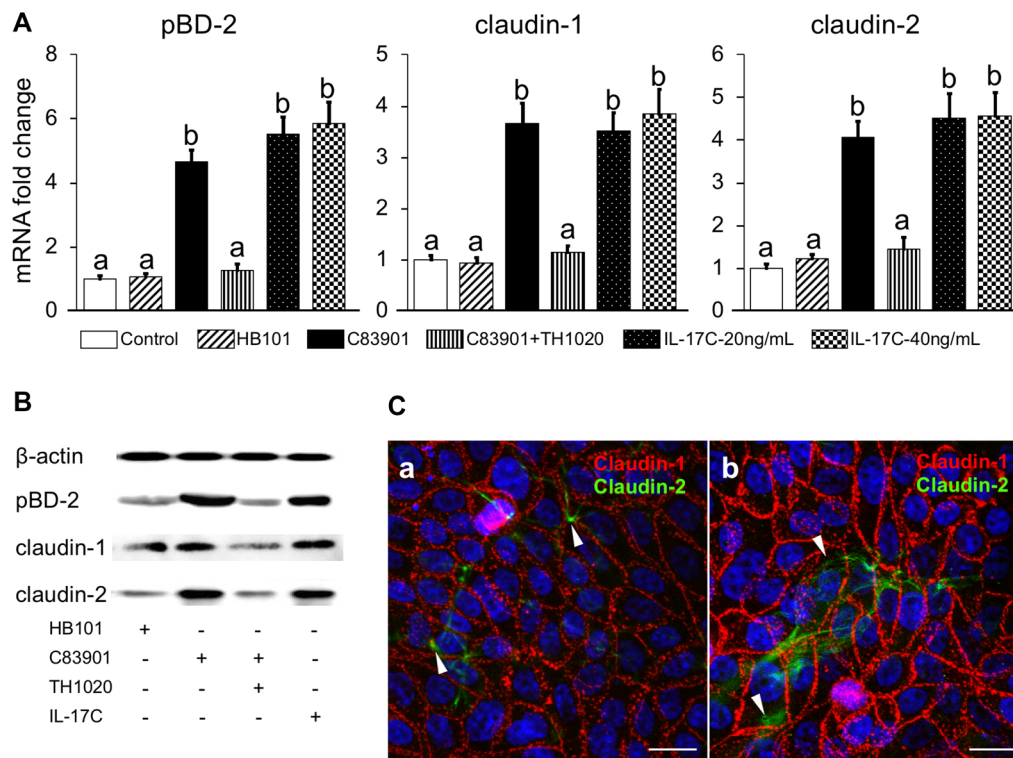
#### IL-17C directly regulates inflammatory cytokine response and epithelial permeability in IPEC-J2 cells

Since it has been shown that inflammation can influence the expression of tight junction proteins (TJs), such as claudin-1, occludin and zonula occludens (ZO-1) [27, 28], we also assayed the mRNA expression of IL-8, TNF- $\alpha$ , occludin and ZO-1 by polarized IPEC-J2 cells using transwell inserts. As shown in Figure 5A, both C83901 infection and IL-17C stimulation

upregulated IL-8 and TNF- $\alpha$  transcripts in IPEC-J2 cells as compared to control or HB101 treated cells. The induced secretion of IL-8 was also confirmed by ELISA in both the apical and basolateral medium (Figure 5B). However, TNF- $\alpha$  was not detected in culture media collected from both apical and basolateral sides of the cells under all of these experimental conditions (data not shown). In addition, C83901 infection decreased occludin mRNA expression in IPEC-J2 cells at 4 h post stimulation, while IL-17C exerted the opposite effect (Figure 5A). The effects of C83901 infection and IL-17C on occludin protein expression were further confirmed by an immunofluorescence assay (Figure 6A) and Western blotting (Figure 6B). In contrast to occludin, ZO-1 mRNA expression was not affected by IL-17C treatment or F4<sup>+</sup> ETEC infection (Figure 5A).

To further confirm the role of IL-17C on the barrier integrity of IPEC-J2 cells, the TEER was measured during the first 24 h upon bacterial infection or IL-17C stimulation. The TEER in IPEC-J2 cells remained stable in the first 12 h, but increased significantly at 24 h in the presence of IL-17C. Infection with C83901 on the other hand significantly decreased TEER values as compared to control or HB101 treated monolayers from 4 h to 24 h (Figure 5C). Notably, TEER values significantly increased at 24 h as compared to 12 h after C83901 infection (Figure 5C).





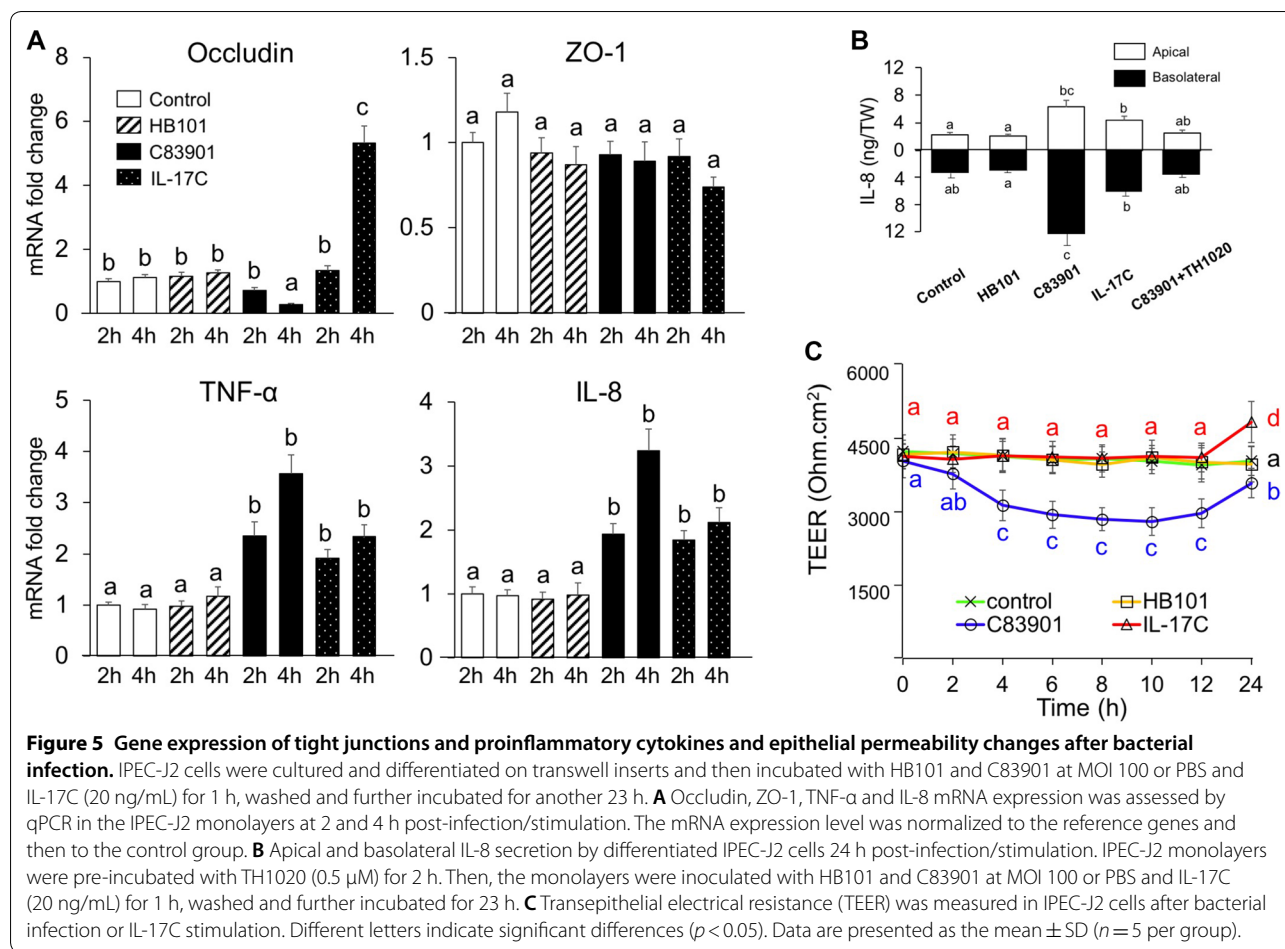
**Figure 4** TLR-5 mediated IL-17C induce pBD-2, claudin-1 and -2 expression in IPEC-J2 cells. IPEC-J2 monolayers were pre-incubated with 0.5 μM TH1020 or the equivalent amount of its solvent DMSO for 2 h. Then, the monolayers were inoculated with HB101 or C83901 at MOI 100 for 1 h, washed and further incubated for 23 h. Non-treated cells were supplemented with PBS or IL-17C (20 or 40 ng/mL). **A** pBD-2, claudin-1 and -2 mRNA expression in the IPEC-J2 monolayers was assessed by qPCR. The mRNA expression level was normalized to the reference genes and then to the control group. Different letters indicate significant differences ( $p < 0.05$ ). Data are presented as the mean  $\pm$  SD ( $n = 5$  per group). **B** pBD-2, claudin-1 and -2 protein were detected by Western blotting. IPEC-J2 monolayers were pre-incubated with TH1020 (0.5 μM) or the equivalent amount of its solvent DMSO for 2 h. Then, the monolayers were inoculated with HB101 and C83901 at MOI 100 for 1 h, washed and further incubated for 23 h. Non-treated cells were supplemented 20 ng/mL IL-17C. **C** Cellular localization of claudin-1 and -2 in IPEC-J2 cells 24 h post PBS (left panel) and C83901 (right pane, MOI 100) stimulation. The cells were stained with anti-claudin-1 (Texas-Red, Red), anti-claudin-2 (FITC, green). The nuclei were counterstained with Hoechst and representative confocal images are shown ( $n = 3$ ). Scale bar = 10 μm.

## Discussion

Accumulating evidence has suggested that the epithelial expression of IL-17C can be induced directly by bacteria or indirectly through inflammatory cytokines [7, 8, 26]. The rapid kinetics of IL-17C expression following these stimuli positions IL-17C as an early player in the epithelial response to bacterial challenge [1]. TLR2, TLR4 or TLR5 signaling was shown to regulate IL-17C expression in human and mouse epithelial cells [7, 8, 23, 26, 29]. However, there have been no reports defining the IL-17C response in pigs. In the present study, we showed that F4<sup>+</sup> ETEC infection triggered IL-17C production in small intestinal epithelial cells in a TLR5-dependent manner. This IL-17C controls the expression of antimicrobial peptides and tight junction proteins by these epithelial cells. This corroborates previous findings showing that TLR5 signaling triggers IL-17C production in human colonic epithelial cells [7, 23]. Flagellin is the only known ligand

of TLR5 to date and has been shown to induce potent IL-17C production in several epithelial cells [7, 23, 24]. Here, we further demonstrated the involvement of flagellin in the TLR5 mediated IL-17C induction in porcine IECs. Although flagellin-dependent TLR5 signaling can be selectively inhibited by TH1020 [22], complete inhibition of IL-17C expression by TH1020 was only observed in flagellin, but not in F4<sup>+</sup> ETEC stimulated cells. These results indicate that, in addition to TLR5 signaling, other pathways also might contribute to the IL-17C production during F4<sup>+</sup> ETEC infection.

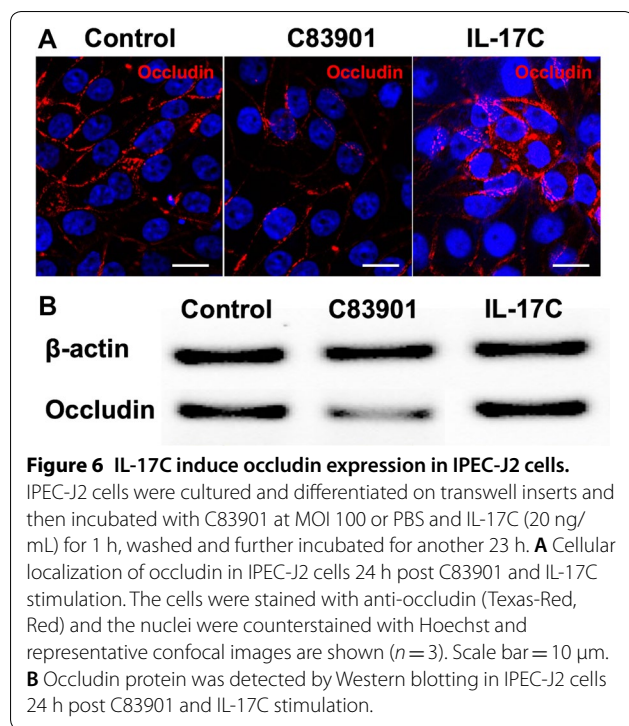
F4<sup>+</sup> ETEC infection not only upregulated TLR5 mRNA expression in IECs, but also TLR8 expression. TLR8 recognizes single stranded RNA and was recently shown to control the potent immunogenicity of live attenuated vaccines by sensing microbial viability [30]. This might explain why the HB101 strain also triggered TLR8 mRNA expression, albeit to a lesser extent than F4<sup>+</sup> ETEC. The



upregulation of TLR2 in intestinal tissues and in IECs (slight increase) are in line with previous results, and probably serve as a signal to augment intestinal epithelial barrier integrity after F4<sup>+</sup>ETEC infection [31, 32]. Both F4<sup>+</sup>ETEC and ETEC-derived flagellin are known to trigger the fast secretion of pro-inflammatory cytokines by porcine IECs at the early stage of infection, such as TNF- $\alpha$ , prostaglandin E2 (PGE2), IL-6, IL-8 and IL-1 $\alpha$  [16, 31, 33, 34], which are intended to disarm or destroy invading bacteria. Both *E. coli* strains induced TLR10 mRNA expression in intestinal tissues. TLR10 is expressed on immune cells [35], and although no ligands have yet been identified, this TLR seems to have an anti-inflammatory role [36]. Thus, increased TLR10 in the intestinal tissues is probably required to limit overwhelming inflammation to avoid inflammatory injury. However, an opposite result was found regarding the expression of these TLRs in the jejunum of diarrheal piglets [37], indicating that the TLRs expression profile also relates to the course of infection and disease severity after ETEC infection.

ETEC infection may increase the epithelial permeability by reducing the expression of tight junction

proteins (TJs), such as claudin-1, in porcine IECs [38, 39], thus allowing the passage of electrolytes and water through the paracellular space and triggering diarrhea. However, here we found that ETEC strain C83901 increased both the mRNA and protein expression of claudin-1 and -2 in IPEC-J2 cells (at least at the 24 h time point after ETEC infection). In addition, the expression of these two genes can be also induced by exogenous IL-17C. Moreover, interference of IL-17C production through the TLR5 signaling inhibitor TH1020 decreased claudin-1 and -2 expression. These results indicate the participation of TLR5 mediated IL-17C in the induction of these claudins. Recently, a comprehensive study also detected the protein expression of several claudins (claudin-1, -3, -4, -5, -7, and claudin-8) in IPEC-J2 cells and no significant changes were observed between ETEC infected and control groups [33]. As those claudins were detected at 8 h post ETEC (IMT4818) infection, the inconsistent results in claudin expression might be attributed to the different sampling time or the different ETEC strains. Nevertheless, whether different F4<sup>+</sup>ETEC strains can differentially



affect the expression of claudins needs further investigation. We also determined the subcellular localization of claudin-1 and claudin-2 and found that ETEC infection induces the cytoplasmic distribution of claudin-2, but not claudin-1. Claudin-1 are exclusively located in the junctional area of IPEC-J2 cells following infection with a variety of porcine ETEC strains and porcine epidemic diarrhea virus [40, 41], indicating the essential role of this TJ protein in preventing intestinal pathogens to enter the paracellular space and invade the host [42]. Claudin-2 has been shown to form a paracellular channel for small ions and water and its upregulation is linked to leaky epithelial barriers and diarrhea [43, 44]. Notably, this claudin-2-mediated epithelial permeability and diarrhea is critical to prevent intestinal pathology and to accelerate pathogen clearance [44]. The immunofluorescence microscopy results showed that ETEC infection increased cytoplasmic distribution and decreased the junctional localization of claudin-2. These findings may explain the upregulated expression of claudin-2 and declined TEER in IPEC-J2 cells after ETEC infection in the present study, and might indicate a role of claudin-2 in host defense rather than disease progression. In T84 human colon IECs, the enterotoxin STb can induce redistribution and/or fragmentation of ZO-1, claudin-1, and occludin due to actin rearrangement [45, 46]. Future studies addressing the effects of

STb on tight junction structural proteins in porcine IECs would be worthwhile.

Additionally, we also determined the expression of the other two TJs including occludin and ZO-1 in IPEC-J2 cells. In agreement with other findings [31, 33, 39], ETEC infection significantly downregulated occludin expression at the mRNA level and at the protein level in the cell lysates. In contrast, we did not find any evident changes in the gene expression and protein expression or staining pattern (data not shown) of ZO-1 in F4<sup>+</sup>ETEC infected IPEC-J2 cells compared to those in control or HB101-treated cells. The impaired protein expression of ZO-1 has been reported in IPEC-J2 cells at 4 to 6 h post ETEC stimulation [31, 47]. Considering we investigated the protein expression profile only at 24 h post infection, we hypothesized that reduction of ZO-1 might occur at the early stage of infection. Down-regulation of occludin following F4<sup>+</sup>ETEC infection is associated with a loss in TEER despite the upregulation of claudins. Interestingly, IL-17C significantly increased the expression of occludin and claudins in IPEC-J2 cells. Considering ETEC infection can induce the production of IL-17C, we speculate that IL-17C might participate in the regulation of the integrity of the intestinal barrier at a later stage of the bacterial infection. This is consistent with the significant increase in TEER at 24 h post ETEC infection or IL-17C stimulation (Figure 5C). Others have previously demonstrated the direct and protective role of IL-17C in regulating occludin production by colonic epithelial cells in mice during acute experimental colitis [48]. These results indicated that IL-17C is involved in mucosal barrier stability by regulating the production of claudin-1, -2, occludin and other TJs during ETEC infection.

In several human IECs, the increased expression of such claudins can be regulated by TNF- $\alpha$  and several inflammatory cytokines [27, 49]. Consistent with previous findings [16, 31, 33, 34], TNF- $\alpha$  and IL-8 were elicited in IPEC-J2 cells by F4<sup>+</sup>ETEC infection. Intriguingly, addition of exogenous IL-17C in IPEC-J2 cells also triggered the mRNA and protein expression of these two cytokines. Meanwhile, the TLR5 signaling inhibitor TH1020 exhibited a significant inhibition of C83901 induced IL-8 secretion. In the present study, TH1020 selectively inhibits the TLR5 mediated IL-17C production during ETEC infection. These results collectively suggests that the above mentioned claudins and other TJs are predominately regulated by IL-17C during ETEC infection. However, we cannot rule out an indirect role of TNF- $\alpha$  and other inflammatory cytokines in mediating TJs expression by epithelial cells as IL-17C has the capability of inducing fast inflammatory cytokines response in IECs [7].

Previous studies demonstrated IL-17C enhances the expression of mucosal host defense genes (hBD2, and S100 calcium-binding protein A12 (S100A12)) in an autocrine/paracrine manner in other epithelial cells [7, 24]. Interestingly, TLR5-mediated IL-17C production also induced the expression of pBD-2 in IPEC-J2 cells after F4<sup>+</sup> ETEC infection. To our knowledge, we are the first to report that IL-17C induces the expression of antimicrobial peptides and tight junction proteins in porcine intestinal epithelial cells. In addition, exogenous IL-17C also increased the expression of pBD-2, claudin-1, claudin-2 and occludin expression. Given that the IL-17C receptor is constitutively expressed in IPEC-J2 cells, these results reveal a role of TLR5 mediated IL-17C in controlling barrier function and mucosal homeostasis in an autocrine/paracrine manner in the porcine intestine.

In summary, we have found that F4<sup>+</sup> ETEC significantly induces the expression of IL-17C in porcine intestinal tissues, particularly in small intestinal epithelial cells, mainly mediated by flagellin-TLR5 engagement. We have further shown that IL-17C is sufficient to induce expression of antimicrobial peptides and tight junctions in IPEC-J2 cells, which indicates an essential role of IL-17C in mediating the innate immune response and barrier function in the intestine during F4<sup>+</sup> ETEC infection.

## Additional files

**Additional file 1. mRNA expression profile of TLRs in the IPEC-J2 cells after HB101 or C83901 infection.** IPEC-J2 monolayers were inoculated with F4<sup>+</sup> ETEC (C83901, black bars), non-pathogenic *E. coli* strain HB101 (diagonal stripe bars) at MOI 100 or PBS (open bars) for 1 h and further incubated for another 1 h and 3 h, respectively. The mRNA expression of TLR-1, -2, -3, -4, -6 -7, -9 and -10 in the IPEC-J2 monolayers was assessed by qPCR. The mRNA expression level was normalized to the reference genes and then to the control group of 2 h treatment. Data are presented as the mean  $\pm$  SD ( $n = 3$  per group), different letters indicate significant differences between groups ( $p < 0.05$ ).

**Additional file 2. Effects of TH1020 and ODN 2088 or their solvents on IL-17C expression and cell viability in IPEC-J2 cells. (A)** DMSO and TE did not affect IL-17C mRNA expression in the IPEC-J2 cells. IPEC-J2 cells were stimulated with DMSO (1:1000) and TE (1:400) for 4 h. Cells incubated with PBS as control. The mRNA expression of IL-17C in the IPEC-J2 monolayers was assessed by qPCR. The mRNA expression level was normalized to the reference genes and then to the control group of 4 h treatment. Data are presented as the mean  $\pm$  SD ( $n = 3$  per group). **(B)** Cell viability was measured using the propidium iodide (PI) assay for the cytotoxic effects of TH1020 and ODN 2088. PI signals are expressed as a percentage death which is normalized against the resting level (0%) and the maximum death level induced by EtOH/Triton  $\times$  (100%). The data are represented as the mean  $\pm$  SEM of 4 replicates and are representative for three different experiments.

## Acknowledgements

This work was supported by the Natural Science Foundation of Zhejiang Province (Grant No. LQ18C180001). BD is supported by a postdoctoral grant of FWO-Vlaanderen.

## Authors' contributions

YL, JX, HZ, BD and EC conceived and designed the experiments. YL carried out the majority of the experiments, was responsible for data collection and drafted the manuscript. YM, HH and CJ performed the SISP experiment and YL, CZ and YW performed the cell culture and infection experiment. YL, JX and CZ were responsible for RT-PCR and WB analysis. BD and EC critically revised the manuscript. All authors read and approved the final manuscript.

## Competing interests

The authors declare that they have no competing interests.

## Author details

<sup>1</sup> Animal Medical Testing Center, Department of Animal Production, Faculty of Agricultural & Biological Engineering, Jinhua Polytechnic, Jinhua, China.

<sup>2</sup> Laboratory of Immunology, Faculty of Veterinary Medicine, Ghent University, Ghent, Belgium.

Received: 3 December 2018 Accepted: 27 May 2019

Published online: 20 June 2019

## References

- Song X, He X, Li X, Qian Y (2016) The roles and functional mechanisms of interleukin-17 family cytokines in mucosal immunity. *Cell Mol Immunol* 13:418–431
- Iwakura Y, Ishigame H, Saijo S, Nakae S (2011) Functional specialization of interleukin-17 family members. *Immunity* 34:149–162
- Das S, Khader S (2017) Yin and yang of interleukin-17 in host immunity to infection. *F1000Res* 6:741
- Friedrich M, Diegelmann J, Schaubert J, Auernhammer CJ, Brand S (2015) Intestinal neuroendocrine cells and goblet cells are mediators of IL-17A-amplified epithelial IL-17C production in human inflammatory bowel disease. *Mucosal Immunol* 8:943–958
- Holland DB, Bojar RA, Farrar MD, Holland KT (2009) Differential innate immune responses of a living skin equivalent model colonized by *Staphylococcus epidermidis* or *Staphylococcus aureus*. *FEMS Microbiol Lett* 290:149–155
- Wu Q, Martin RJ, Rino JG, Breed R, Torres RM, Chu HW (2007) IL-23-dependent IL-17 production is essential in neutrophil recruitment and activity in mouse lung defense against respiratory *Mycoplasma pneumoniae* infection. *Microbes Infect* 9:78–86
- Ramirez-Carrozzi V, Sambandam A, Luis E, Lin Z, Jeet S, Lesch J, Hackney J, Kim J, Zhou M, Lai J, Modrusan Z, Sai T, Lee W, Xu M, Caplazi P, Diehl L, de Voss J, Balazs M, Gonzalez L Jr, Singh H, Ouyang W, Pappu R (2011) IL-17C regulates the innate immune function of epithelial cells in an autocrine manner. *Nat Immunol* 12:1159–1166
- Song X, Zhu S, Shi P, Liu Y, Shi Y, Levin SD, Qian Y (2011) IL-17RE is the functional receptor for IL-17C and mediates mucosal immunity to infection with intestinal pathogens. *Nat Immunol* 12:1151–1158
- Huang J, Meng S, Hong S, Lin X, Jin W, Dong C (2016) IL-17C is required for lethal inflammation during systemic fungal infection. *Cell Mol Immunol* 13:474–483
- Luppi A, Gibellini M, Gin T, Vangroenweghe F, Vandenbroucke V, Bauerfeind R, Bonilauri P, Labarque G, Hidalgo Á (2016) Prevalence of virulence factors in enterotoxigenic *Escherichia coli* isolated from pigs with post-weaning diarrhoea in Europe. *Porcine Health Manag* 2:20
- Wang H, Zhong Z, Luo Y, Cox E, Devriendt B (2019) Heat-stable enterotoxins of enterotoxigenic *Escherichia coli* and their impact on host immunity. *Toxins* 11:E24
- Peterson LW, Artis D (2014) Intestinal epithelial cells: regulators of barrier function and immune homeostasis. *Nat Rev Immunol* 14:141–153
- Brosnahan AJ, Brown DR (2012) Porcine IPEC-J2 intestinal epithelial cells in microbiological investigations. *Vet Microbiol* 156:229–237
- Finamore A, Roselli M, Imbinto A, Seeboth J, Oswald IP, Mengheri E (2014) *Lactobacillus amylovorus* inhibits the TLR4 inflammatory signaling triggered by enterotoxigenic *Escherichia coli* via modulation of the negative regulators and involvement of TLR2 in intestinal Caco-2 cells and pig explants. *PLoS One* 9:e94891

15. Zhou C, Liu Z, Jiang J, Yu Y, Zhang Q (2012) Differential gene expression profiling of porcine epithelial cells infected with three enterotoxigenic *Escherichia coli* strains. *BMC Genomics* 13:330
16. Devriendt B, Stuyven E, Verdonck F, Goddeeris BM, Cox E (2010) Enterotoxigenic *Escherichia coli* (K88) induce proinflammatory responses in porcine intestinal epithelial cells. *Dev Comp Immunol* 34:1175–1182
17. Luo Y, Van Nguyen U, de la Fe Rodriguez PY, Devriendt B, Cox E (2015) F4(+) ETEC infection and oral immunization with F4 fimbriae elicits an IL-17-dominated immune response. *Vet Res* 46:121
18. Nguyen VU, Goetstouwers T, Coddens A, Van Poucke M, Peelman L, Deforce D, Melkebeek V, Cox E (2013) Differentiation of F4 receptor profiles in pigs based on their mucin 4 polymorphism, responsiveness to oral F4 immunization and in vitro binding of F4 to villi. *Vet Immunol Immunopathol* 152:93–100
19. Loos M, Geens M, Schauvliege S, Gasthuys F, van der Meulen J, Dubreuil JD, Goddeeris BM, Niewold T, Cox E (2012) Role of heat-stable enterotoxins in the induction of early immune responses in piglets after infection with enterotoxigenic *Escherichia coli*. *PLoS One* 7:e41041
20. Lenert PS (2010) Classification, mechanisms of action, and therapeutic applications of inhibitory oligonucleotides for Toll-like receptors (TLR) 7 and 9. *Mediators Inflamm* 2010:986596
21. Jurk M, Kritzler A, Schulte B, Tluk S, Schetter C, Krieg AM, Vollmer J (2006) Modulating responsiveness of human TLR7 and 8 to small molecule ligands with T-rich phosphorothioate oligodeoxynucleotides. *Eur J Immunol* 36:1815–1826
22. Yan L, Liang J, Yao C, Wu P, Zeng X, Cheng K, Yin H (2016) Pyrimidine triazole thioether derivatives as toll-like receptor 5 (TLR5)/flagellin complex inhibitors. *ChemMedChem* 11:822–826
23. Im E, Jung J, Rhee SH (2012) Toll-like receptor 5 engagement induces interleukin-17C expression in intestinal epithelial cells. *J Interferon Cytokine Res* 32:583–591
24. Kusagaya H, Fujisawa T, Yamanaka K, Mori K, Hashimoto D, Enomoto N, Inui N, Nakamura Y, Wu R, Maekawa M, Suda T, Chida K (2014) Toll-like receptor-mediated airway IL-17C enhances epithelial host defense in an autocrine/paracrine manner. *Am J Respir Cell Mol Biol* 50:30–39
25. Livak KJ, Schmittgen TD (2001) Analysis of relative gene expression data using real-time quantitative PCR and the  $2^{-\Delta\Delta CT}$  method. *Methods* 25:402–408
26. Song X, Gao H, Lin Y, Yao Y, Zhu S, Wang J, Liu Y, Yao X, Meng G, Shen N, Shi Y, Iwakura Y, Qian Y (2014) Alterations in the microbiota drive interleukin-17C production from intestinal epithelial cells to promote tumorigenesis. *Immunity* 40:140–152
27. Poritz LS, Harris LR 3rd, Kelly AA, Koltun WA (2011) Increase in the tight junction protein claudin-1 in intestinal inflammation. *Dig Dis Sci* 56:2802–2809
28. Xu P, Elamin E, Elizalde M, Bours PPH, Pierik MJ, Masclee AAM, Jonkers DMAE (2019) Modulation of intestinal epithelial permeability by plasma from patients with Crohn's Disease in a three-dimensional cell culture model. *Sci Rep* 9:2030
29. Pfeifer P, Voss M, Wonnemberg B, Hellberg J, Seiler F, Lepper PM, Bischoff M, Langer F, Schäfers HJ, Menger MD, Bals R, Beisswenger C (2013) IL-17C is a mediator of respiratory epithelial innate immune response. *Am J Respir Cell Mol Biol* 48:415–421
30. Ugolini M, Gerhard J, Burkert S, Jensen KJ, Georg P, Ebner F, Volkers SM, Thada S, Dietert K, Bauer L, Schäfer A, Helbig ET, Opitz B, Kurth F, Sur S, Dittrich N, Gaddam S, Conrad ML, Benn CS, Blohm U, Gruber AD, Hutloff A, Hartmann S, Boekschoten MV, Müller M, Jungersen G, Schumann RR, Suttrop N, Sander LE (2018) Recognition of microbial viability via TLR8 drives TFH cell differentiation and vaccine responses. *Nat Immunol* 19:386–396
31. Zhang W, Zhu YH, Yang JC, Yang GY, Zhou D, Wang JF (2015) A selected *Lactobacillus rhamnosus* strain promotes EGFR-independent Akt activation in an enterotoxigenic *Escherichia coli* K88-infected IPEC-J2 cell model. *PLoS One* 10:e0125717
32. Oppong GO, Rapsinski GJ, Newman TN, Nishimori JH, Biesecker SG, Tukul C (2013) Epithelial cells augment barrier function via activation of the Toll-like receptor 2/phosphatidylinositol 3-kinase pathway upon recognition of *Salmonella enterica* serovar Typhimurium curli fibrils in the gut. *Infect Immun* 81:478–486
33. Kern M, Günzel D, Aschenbach JR, Tedin K, Bondzio A, Lodemann U (2017) Altered cytokine expression and barrier properties after in vitro infection of porcine epithelial cells with enterotoxigenic *Escherichia coli* and probiotic *Enterococcus faecium*. *Mediators Inflamm* 2017:2748192
34. Xia L, Dai L, Zhu L, Hu W, Yang Q (2017) Proteomic analysis of IPEC-J2 cells in response to coinfection by porcine transmissible gastroenteritis virus and enterotoxigenic *Escherichia coli* K88. *Proteomics Clin Appl* 11:1600137
35. Govindaraj RG, Manavalan B, Lee G, Choi S (2010) Molecular modeling-based evaluation of hTLR10 and identification of potential ligands in toll-like receptor signaling. *PLoS One* 5:e12713
36. Oosting M, Cheng SC, Bolscher JM, Vestering-Stenger R, Plantinga TS, Verschuere IC, Arts P, Garritsen A, van Eenennaam H, Sturm P, Kullberg BJ, Hoischen A, Adema GJ, van der Meer JW, Netea MG, Joosten LA (2014) Human TLR10 is an anti-inflammatory pattern-recognition receptor. *Proc Natl Acad Sci USA* 111:E4478–E4484
37. Ren W, Yin J, Chen S, Duan J, Liu G, Li T, Li N, Peng Y, Tan B, Yin Y (2016) Proteome analysis for the global proteins in the jejunum tissues of enterotoxigenic *Escherichia coli*-infected piglets. *Sci Rep* 6:25640
38. Gao Y, Han F, Huang X, Rong Y, Yi H, Wang Y (2013) Changes in gut microbial populations, intestinal morphology, expression of tight junction proteins, and cytokine production between two pig breeds after challenge with *Escherichia coli* K88: a comparative study. *J Anim Sci* 91:5614–5625
39. Wu Y, Zhu C, Chen Z, Chen Z, Zhang W, Ma X, Wang L, Yang X, Jiang Z (2016) Protective effects of *Lactobacillus plantarum* on epithelial barrier disruption caused by enterotoxigenic *Escherichia coli* in intestinal porcine epithelial cells. *Vet Immunol Immunopathol* 172:55–63
40. Johnson AM, Kaushik RS, Hardwidge PR (2010) Disruption of trans-epithelial resistance by enterotoxigenic *Escherichia coli*. *Vet Microbiol* 141:115–119
41. Luo X, Guo L, Zhang J, Xu Y, Gu W, Feng L, Wang Y (2017) Tight junction protein occludin is a porcine epidemic diarrhea virus entry factor. *J Virol* 91:e00202–e00217
42. Hatayama S, Shimohata T, Amano S, Kido J, Nguyen AQ, Sato Y, Kanda Y, Tentaku A, Fukushima S, Nakahashi M, Uebanso T, Mawatari K, Takahashi A (2018) Cellular tight junctions prevent effective *Campylobacter jejuni* invasion and inflammatory barrier disruption promoting bacterial invasion from lateral membrane in polarized intestinal epithelial cells. *Front Cell Infect Microbiol* 8:15
43. Luettig J, Rosenthal R, Barmeyer C, Schulzke JD (2015) Claudin-2 as a mediator of leaky gut barrier during intestinal inflammation. *Tissue Barriers* 3:e977176
44. Tsai PY, Zhang B, He WQ, Zha JM, Odenwald MA, Singh G, Tamura A, Shen L, Sailer A, Yeruva S, Kuo WT, Fu YX, Tsukita S, Turner JR (2017) IL-22 upregulates epithelial claudin-2 to drive diarrhea and enteric pathogen clearance. *Cell Host Microbe* 21:671–681
45. Nassour H, Dubreuil JD (2014) *Escherichia coli* STb enterotoxin dislodges claudin-1 from epithelial tight junctions. *PLoS One* 9:e113273
46. Ngendahayo Mukiza C, Dubreuil JD (2013) *Escherichia coli* heat-stable toxin b impairs intestinal epithelial barrier function by altering tight junction proteins. *Infect Immun* 81:2819–2827
47. Karimi S, Jonsson H, Lundh T, Roos S (2018) *Lactobacillus reuteri* strains protect epithelial barrier integrity of IPEC-J2 monolayers from the detrimental effect of enterotoxigenic *Escherichia coli*. *Physiol Rep* 6:e13514
48. Reynolds JM, Martinez GJ, Nallaparaju KC, Chang SH, Wang YH, Dong C (2012) Cutting edge: regulation of intestinal inflammation and barrier function by IL-17C. *J Immunol* 189:4226–4230
49. Garcia-Hernandez V, Quiros M, Nusrat A (2017) Intestinal epithelial claudins: expression and regulation in homeostasis and inflammation. *Ann N Y Acad Sci* 1397:66–79
50. Uddin MJ, Kaewmala K, Tesfaye D, Tholen E, Looft C, Hoelker M, Schellander K, Cinar MU (2013) Expression patterns of porcine Toll-like receptors family set of genes (TLR1-10) in gut-associated lymphoid tissues alter with age. *Res Vet Sci* 95:92–102
51. Jiao W, Ma Q, Lv X, Shan A, Li Z (2017) Gene expression and tissue distribution of  $\beta$ -defensins in Chinese Min pigs and Landrace pigs. *Czech J Anim Sci* 62:178–183
52. Pasternak JA, Aiyer VIA, Hamonic G, Beaulieu AD, Columbus DA, Wilson HL (2018) Molecular and physiological effects on the small intestine of weaner pigs following feeding with deoxynivalenol-contaminated feed. *Toxins* 10:40
53. Yu H, Ding X, Shang L, Zeng X, Liu H, Li N, Huang S, Wang Y, Wang G, Cai S, Chen M, Levesque CL, Johnston LJ, Qiao S (2018) Protective ability of

- biogenic antimicrobial peptide Microcin J25 against enterotoxigenic *Escherichia Coli*-induced intestinal epithelial dysfunction and inflammatory responses IPEC-J2 cells. *Front Cell Infect Microbiol* 8:242
54. von der Hardt K, Kandler MA, Fink L, Schoof E, Dötsch J, Brandenstein O, Bohle RM, Rascher W (2004) High frequency oscillatory ventilation suppresses inflammatory response in lung tissue and microdissected alveolar macrophages in surfactant depleted piglets. *Pediatr Res* 55:339–346
55. Melkebeek V, Sonck E, Verdonck F, Goddeeris BM, Cox E (2007) Optimized FaeG expression and a thermolabile enterotoxin DNA adjuvant enhance priming of an intestinal immune response by an FaeG DNA vaccine in pigs. *Clin Vaccine Immunol* 14:28–35
56. Pilon C, Levast B, Meurens F, Le Vern Y, Kerboeuf D, Salmon H, Velge-Roussel F, Lebranchu Y, Baron C (2009) CD40 engagement strongly induces CD25 expression on porcine dendritic cells and polarizes the T cell immune response toward Th1. *Mol Immunol* 46:437–447

### Publisher's Note

Springer Nature remains neutral with regard to jurisdictional claims in published maps and institutional affiliations.

**Ready to submit your research? Choose BMC and benefit from:**

- fast, convenient online submission
- thorough peer review by experienced researchers in your field
- rapid publication on acceptance
- support for research data, including large and complex data types
- gold Open Access which fosters wider collaboration and increased citations
- maximum visibility for your research: over 100M website views per year

**At BMC, research is always in progress.**

Learn more [biomedcentral.com/submissions](https://biomedcentral.com/submissions)

