

## Research Article

# Correlation of Abdominal Fat Distribution with Different Types of Diabetes in a Chinese Population

Anhui Zhu, Bin Cui, Haodan Dang, Dan Yao, Haitao Yu, Hongmin Jia, Zhijun Hu, and Xiaojin Zhang

Department of Radiology, Aerospace Central Hospital, 15 Yuquan Road, Haidian District, Beijing 100049, China

Correspondence should be addressed to Xiaojin Zhang; [dr.xiaojin.zhang@gmail.com](mailto:dr.xiaojin.zhang@gmail.com)

Received 13 May 2013; Revised 10 September 2013; Accepted 30 September 2013

Academic Editor: Joseph Fomusi Ndisang

Copyright © 2013 Anhui Zhu et al. This is an open access article distributed under the Creative Commons Attribution License, which permits unrestricted use, distribution, and reproduction in any medium, provided the original work is properly cited.

To investigate abdominal fat distribution in Chinese subjects with diabetes and its correlation with different types of diabetes. A total of 176 diabetic subjects were enrolled, 92 with type 1 and 84 with type 2, with a mean age of 27.41 and 49.3 yrs. No subject has history of severe diseases. Multi-slice CT was used to measure total abdominal adipose (TA) and visceral adipose (VA) tissues. Subcutaneous adipose (SA) tissue was obtained by subtracting VA from TA. There were differences between subjects with T1DM and T2DM for TA, VA, SA, VA/SA, body mass index (BMI), triglyceride (TG) and high density lipoprotein, but not total Cholesterol or low density lipoprotein. There were positive correlations between TA, VA, SA, VA/SA and T1DM and T2DM ( $P < 0.05$  and  $r > 0.86$ ). In subjects with T1DM, VA was negatively correlated with HDL, positively with BMI and age, and SA was positively correlated with BMI and sex ( $P < 0.05$  and  $r > 0.86$  for all). In subjects with T2DM, VA was positively correlated to BMI, TG and age, and SA was positively correlated to TG and sex ( $P < 0.05$  and  $r > 0.86$  for all). Abdominal fat content was positively correlated to diabetes in Chinese, which differs in different types of diabetes.

## 1. Introduction

Glucose and lipid metabolism are closely interacted with each other. When lipid metabolism is in disorder, glucose metabolism would be interfered. On the other hand, fat is deposited in different regions of the body, and people become obese. It is well known that obesity is highly associated with diabetes. There are many methods to evaluate obesity, such as BMI and waist circumference (WC) [1, 2]. Although these parameters are helpful for diagnosis of obesity, they do not demonstrate the correlation of obesity and other diseases [3]. With the development of medical imaging techniques, there are more and more techniques used for measuring body fat distribution in human being, such as CT and magnetic resonance imaging (MRI). Especially MSCT, whose exact value can be used to determine the nature of tissues, combined with the process of imaging, can measure the area of fat precisely, with minor error. MSCT has been regarded as the gold standard for measuring fat distribution [4–6].

There was a study that compared abdominal fat distribution in different types of diabetes and their correlations [7].

However, it is done for different regions of the body such as fat in skeletal muscle and thigh, and it was performed in Canadians. Fat distribution varied in different ethnic groups [8] and thus had different contribution to the onset of diabetes [9]. As per our knowledge, there is no study investigating the abdominal fat distribution in different types of diabetes or its contributions in Chinese population.

Therefore, in this study, by using MSCT, we measured the abdominal fat of Chinese subjects with diabetes, and explored the characteristics of abdominal fat distribution in Chinese subjects with different types of diabetes, as well as its correlation with diabetes in Chinese population.

## 2. Materials and Methods

**2.1. Study Population.** This study was approved by ethics board and institutional review board of our hospital. All the subjects signed the written consent form prior to the study initiation. All the procedures meet the requirement of clinical research and health insurance portability and

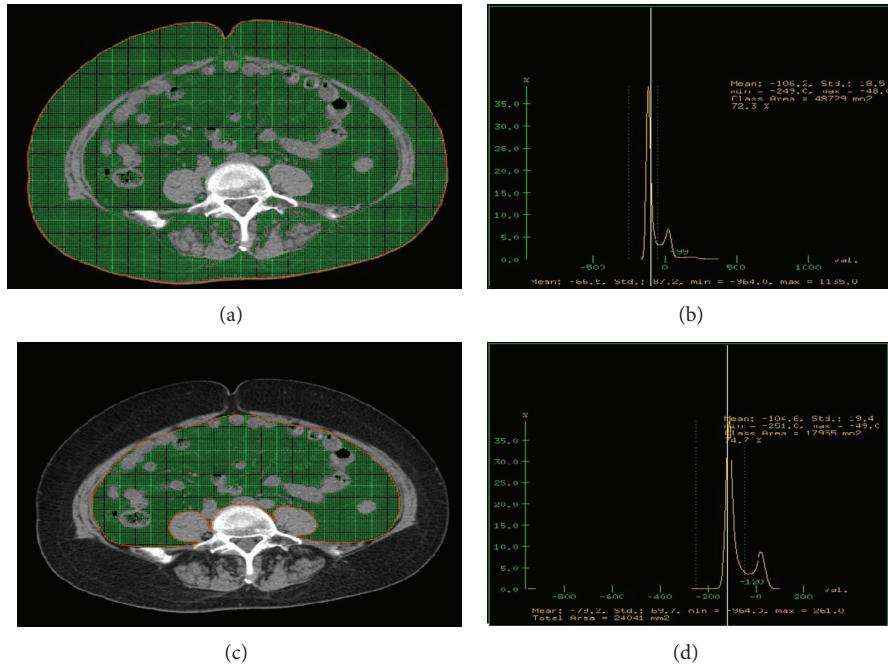


FIGURE 1: (a)–(d) are the measurement for abdominal fat. (a) is the line along abdominal skin at the axial position of CT image (red line); (b) is the area within adipose tissue of this area with histogram calculation (green area), that is, the total abdominal adipose tissue (TA) ( $\text{mm}^2$ ); (c) is the line along the abdominal wall and the internal edges of bilateral psoas major (red line); (d) is the area of adipose tissue within this area with histogram calculation (green area), the visceral adipose tissue (VA) ( $\text{mm}^2$ ).

accountability act compliance. From those who visited our department during Jan of 2010 to Jan of 2013, 176 subjects with diabetes were randomly enrolled into this study, including 92 with T1DM and 84 with T2DM. There were 51 males and 41 females in T1DM group, aged 14~59 yrs, with a mean age of  $27.41 \pm 11.03$  yrs. There were 60 males and 24 females in T2DM group, aged 23~64 yrs, with a mean age of  $49.3 \pm 10.11$  yrs. Total abdominal adipose tissue (TA) and visceral adipose tissue (VA) were measured with MSCT and histogram method. Subcutaneous adipose tissue (SA) area was obtained by subtracting VA from TA. The ratio of visceral adipose tissue and subcutaneous adipose tissue (VA/SA) was calculated. Other characteristics such as BMI, TG, HDL, total cholesterol (Tch), and LDL were collected in the whole population enrolled. All the measurements were performed per manufacturer protocol.

## 2.2. Methods

**2.2.1. CT Scanning.** GE LightSpeed 16 spiral CT was used. Scan was performed at the umbilicus level (L4), with the axial view, a voltage of 120 Kv, a current of 200 mA, and by Axial/2i, for 5 mm of thickness and an interval of 5 mm. The imaging was rebuilt in stand mode.

**2.2.2. Measurement of Abdominal Adipose Content.** Transfer the imaging to ADW4.4 workstation for process, set the CT value of adipose tissue attenuating region as  $-50 \sim -250$  Hu with histogram method, and draw a line along the abdominal skin. Within this area of adipose tissue, the total abdominal adipose tissue (TA) ( $\text{mm}^2$ ) (Figures 1(a) and 1(b)) was

measured. Draw another line along the abdominal muscles and the internal edges of bilateral psoas, and measure adipose content within this area, which is the visceral adipose tissue area (VA) ( $\text{mm}^2$ ) (Figures 1(c) and 1(d)). The difference between TA and VA was then calculated, by which the subcutaneous adipose area (SA) ( $\text{mm}^2$ ) was obtained. The ratio of VA/SA was then calculated. The measurements were conducted by 2 experienced CT who were radiologists blinded to subjects' information. Data was then reviewed by the third radiologist. The mean of the measurements was used as the final value for analysis.

**2.2.3. Statistical Analysis.** SPSS13.0 was used for data analysis. Data consistency between two measurements by two radiologists was tested with *Kapper* test. The basic parameters among subjects with different types of diabetes were analyzed with student *t*-test. The correlations were performed with linear regression analysis (stepwise). The data were presented as mean  $\pm$  SD.  $P < 0.05$  was regarded significant.

## 3. Results

**3.1. Data Consistency by Two Radiologists Was Tested with Kapper Test.** The *Kapper* value for these two radiologists was  $>0.8$ , suggesting a good consistency between radiologists. The mean of these two measurements was used for analysis.

**3.2. Characteristics of Abdominal Fat Distribution in Subjects with Different Types of Diabetes.** As shown in Table 1, there were significant differences for TA, VA, SA, VA/SA, BMI, TG, and HDL between subjects with T1DM and those with T2DM

TABLE 1: Comparison of parameters in subjects with type 1 and type 2 diabetes.

	Age	TA	VA	SA	VA/SA	BMI	TG	Tch	HDL	LDL
T1DM	27.4 ± 11.0	12562 ± 7557	3246 ± 2280	9315 ± 5905	0.41 ± 0.25	21.0 ± 3.6	0.830 ± 0.435	4.48 ± 1.21	1.2 ± 0.30	2.6 ± 0.9
T2DM	49.3 ± 10.1	34722 ± 34799	13767 ± 6711	20955 ± 33686	0.93 ± 0.46	25.4 ± 3.5	1.993 ± 1.329	4.63 ± 0.91	0.9 ± 0.23	2.8 ± 0.8
T value	-13.7	-5.96	-14.17	-3.26	-9.31	-8.3	-7.94	-0.90	7.44	-1.7
P value	<0.001	<0.001	<0.001	0.001	<0.001	<0.001	<0.001	0.369	<0.001	0.1
95% CI	-25.0	-29501	-11986	-18685	-0.623	-5.5	-1.453	-0.461	0.218	-0.5
	-18.7	-14818	-9055	-4593	-0.405	-3.4	-0.874	0.172	0.376	0.04

T1DM: type 1 diabetes mellitus; T2DM: type 2 diabetes mellitus; TA: total adipose; VA: visceral adipose; SA: subcutaneous adipose; BMI: body mass index; TG: triglyceride; Tch: total cholesterol; HDL: high density lipoprotein; LDL: low density lipoprotein.

TABLE 2: Correlation of abdominal fat in patients with type 1 diabetes.

	TA	VA	SA	VA/SA
Correlation equation	-9201.700	-3492.221	-9674.451	0.411
	+970.632BMI	+291.358BMI	+5735.256SEX	-0.249SEX
	+6689.191SEX	+79.431AGE	+779.121BMI	+0.004AGE
	+138.576AGE	-1299.145HDL		
	-4563.910HDL			
R Square	0.551	0.489	0.512	0.299
F value	26.646	28.051	46.622	18.963
P value	<0.001	<0.001	<0.001	<0.001

( $P < 0.05$ ), all but HDL higher in T2DM, but not for Tch or LDL.

### 3.3. Correlation Analysis for Abdominal Fat Content with Different Types of Diabetes

**3.3.1. Correlation Analysis for Abdominal Fat Content with Type 1 Diabetes.** As shown in Table 2, TA, VA, SA, and VA/SA are positively correlated to the onset and duration of T1DM ( $P < 0.05$ ), and the correlation coefficients of TA and SA were relatively higher. According to the correlation equation, TA and VA were negatively correlated with HDL, TA was positively correlated with BMI, AGE, and SEX, VA was positively correlated with BMI and AGE, and SA was positively correlated with BMI and SEX ( $P < 0.05$ ).

**3.3.2. Correlation Analysis for Abdominal Fat Content with Type 2 Diabetes.** TA, VA, SA, and VA/SA are positively correlated to the onset of type 2 diabetes, and the correlation coefficient with SA was relatively high. According to the correlation equation, TA and VA were positively correlated with TG or SEX, and VA was positively correlated with BMI, AGE, and TG (Table 3).

## 4. Discussion

Currently, fat distribution has been widely used for the studies in metabolic disease in many institutes. It is confirmed that the bigger the area with subcutaneous and visceral adipose tissue, the higher the incidence of related diseases, such as intolerant glucose test, diabetes mellitus, insulin resistance, and lipids metabolic disorders [10–17]. In this study, it is found that TA, VA, SA, and VA/SA are positively correlated

to both type 1 and type 2 diabetes. The subjects with VA/SA >1 account for 40.48% (34/84) of those with type 2 diabetes, whereas the number is only 2.18% (2/92) for subjects with type 1 diabetes, statistically significant. This suggested that compared with subjects with type 2 diabetes, the subjects with type 1 diabetes have more subcutaneous fat than visceral fat. This seems not to be reported previously and may be a novel finding.

Wagenknecht et al. [10] showed that abdominal fat distribution is closely associated with insulin resistance and insulin sensitivity. Hayashi et al. [15] revealed that abdominal fat distribution was significantly correlated with glucose tolerance abnormality. There were very few studies in Chinese population. It is shown [3] that abdominal fat content is positively correlated to insulin resistance. While Li et al. [18] demonstrated that abdominal fat is an independent factor for insulin sensitivity. However, these studies were for subjects with type 2 diabetes. So far, there is no report for subjects with T1DM. Furthermore, most the subjects in those studies were middle aged or the elders. There is no large study for younger aged. In this study, the mean age of the subjects was below 60 yrs old. With the comparison between T1DM and T2DM, it is shown that there were significant differences for TA, VA, SA, VA/SA, BMI, TG, and HDL between T1DM and T2DM in a Chinese population. The levels of TA, VA, SA, VA/SA, BMI, and TG were higher in subjects with T2DM than those with T1DM, but lower for HDL. Furthermore, there is no difference for Tch or LDL between T1DM and T2DM, both close to normal or only slightly higher than the normal range. This may be due to the different state of obesity. In this study, the subjects with type 1 diabetes had a BMI of  $21.01 \pm 3.6$ , while that for subjects with type 2 diabetes was  $25.42 \pm 3.47$ , statistically significant. In another word, the

TABLE 3: Correlation of abdominal fat in subjects with type 2 diabetes.

	TA	VA	SA	VA/SA
Correlation equation	11907.740 +8451.085TG +20055.980SEX	-20541.600 +1017.048BMI +133.967AGE +924.560TG	1003.820 +22210.083SEX +6693.090TG	0.544 -0.449SEX +0.010AGE
R Square	0.174	0.398	0.161	0.221
F value	8.539	17.616	7.794	11.478
P value	<0.001	<0.001	0.001	<0.001

TA: total adipose; VA: visceral adipose; SA: subcutaneous adipose.

subjects with T2DM were fatter than those with T1DM. It was reported that obesity was closely associated with T2DM and lipids disorders. Moreover, due to insulin resistance in type 2 diabetes, there is significant lipid disorders, presented as elevated TG and decreased HDL [19].

It was confirmed in [17] that abdominal fat distribution was correlated with the elder subjects with type 2 diabetes ( $\geq 65$  yrs). There is no report in subjects with T1DM. In this study, we showed that TA and VA were positively correlated to BMI and negatively with HDL in subjects with T1DM. TA was positively correlated to TG, while VA was positively correlated to BMI, TG, and age in subjects with T2DM. It can be assumed that the correlated factors of abdominal fat content in different types of diabetes are different. This may guide the individual treatment strategy in the clinic.

Another unique aspect of this study is that it is done with Chinese population. Compared with other studies done with other population [7, 20, 21], there was unique finding from our study. First, it is found that more subcutaneous fat in subjects with T1DM, and this is correlated to the state of diabetes. Secondly, different types of diabetes had different factors impacting the total abdominal fat and visceral fat.

With the development of radiology, we now can measure abdominal fat distribution with MRI and CT in human being. MRI has no radiation and has a high resolution for tissues; thus it determine the abdominal fat accumulation very well. However, it takes longer time to perform and is complicated and difficult to be used widely. On the other hand, multislice spiral CT (MSCT) is convenient and rapid [22]. It is now regarded as the gold standard to measure fat distribution. There were limitations, such as the computer software which has to be matched up, there is radiation, and it is limited for some specific populations. Nonetheless, its benefit weight over its limitations for fat measurement [23]. Another drawback of our study was that we did not compare with the normal controls for each group, as we intended to take a look at the difference between T1DM and T2DM. This will be included in our ongoing study, and the data will possibly be reported in our next paper.

In summary, MSCT is a simple, convenient, and reliable method to measure abdominal adipose tissue in human being. Per the best of our knowledge, this is the first study investigating the correlation of T1DM and abdominal fat distribution. It is also the first study evaluating the difference of abdominal fat content between T1DM and T2DM in Chinese population. It is suggested that abdominal fat content is

positively correlated to the development of T1DM and T2DM in Chinese. Subcutaneous fat seems to play an important role in the onset of T1DM. Additionally, we showed that the impact factors affecting abdominal fat content in different types of diabetes are different. This may become a potential guide for individualized medicine in the clinic.

## Conflict of Interests

The authors declared no conflict of interests.

## Acknowledgments

The authors thank all the volunteers who participated in this study and all the staff who supported this study. This study was funded by Aerospace Central Hospital.

## References

- [1] P. Brambilla, G. Bedogni, M. Heo, and A. Pietrobelli, "Waist circumference-to-height ratio predicts adiposity better than body mass index in children and adolescents," *International Journal of Obesity*, vol. 37, no. 7, pp. 943–946, 2013.
- [2] S. Wang, L. M. Sparks, H. Xie, F. L. Greenway, L. de Jonge, and S. R. Smith, "Subtyping obesity with microarrays: implications for the diagnosis and treatment of obesity," *International Journal of Obesity*, vol. 33, no. 4, pp. 481–489, 2009.
- [3] J. Chen and Z. Tian, "A study on abdominal fat distribution and metabolic syndrome components," *Journal of Medical Colleges of PLA*, vol. 30, no. 8, pp. 683–686, 2005.
- [4] M. J. Siegel, C. F. Hildebolt, K. T. Bae, C. Hong, and N. H. White, "Total and intraabdominal fat distribution in preadolescents and adolescents: measurement with MR imaging," *Radiology*, vol. 242, no. 3, pp. 846–856, 2007.
- [5] T. Yoshizumi, T. Nakamura, M. Yamane et al., "Abdominal fat: standardized technique for measurement at CT," *Radiology*, vol. 211, no. 1, pp. 283–286, 1999.
- [6] D. Canoy, S. M. Boekholdt, N. Wareham et al., "Body fat distribution and risk of coronary heart disease in men and women in the european prospective investigation into cancer and nutrition in norfolk cohort: a population-based prospective study," *Circulation*, vol. 116, no. 25, pp. 2933–2943, 2007.
- [7] M. C. Dubé, D. R. Joannisse, D. Prud'homme et al., "Muscle adiposity and body fat distribution in type 1 and type 2 diabetes: varying relationships according to diabetes type," *International Journal of Obesity*, vol. 30, no. 12, pp. 1721–1728, 2006.



- [8] M. Rosenbaum, I. Fennoy, S. Accacha et al., "Racial/Ethnic differences in clinical and biochemical type 2 diabetes mellitus risk factors in children," *Obesity*, vol. 21, no. 10, pp. 2081–2090, 2013.
- [9] J. A. Nazare, J. D. Smith, A. L. Borel et al., "Ethnic influences on the relations between abdominal subcutaneous and visceral adiposity, liver fat, and cardiometabolic risk profile: the International Study of Prediction of Intra-Abdominal Adiposity and Its Relationship with Cardiometabolic Risk/Intra-Abdominal Adiposity," *The American Journal of Clinical Nutrition*, vol. 96, no. 4, pp. 714–726, 2012.
- [10] L. E. Wagenknecht, C. D. Langefeld, A. L. Scherzinger et al., "Insulin sensitivity, insulin secretion, and abdominal fat: the Insulin Resistance Atherosclerosis Study (IRAS) Family Study," *Diabetes*, vol. 52, no. 10, pp. 2490–2496, 2003.
- [11] T. Hayashi, E. J. Boyko, D. L. Leonetti et al., "Visceral adiposity and the risk of impaired glucose tolerance: a prospective study among Japanese Americans," *Diabetes Care*, vol. 26, no. 3, pp. 650–655, 2003.
- [12] A. M. Kanaya, T. Harris, B. H. Goodpaster, F. Tyllavsky, and S. R. Cummings, "Adipocytokines attenuate the association between visceral adiposity and diabetes in older adults," *Diabetes Care*, vol. 27, no. 6, pp. 1375–1380, 2004.
- [13] E. J. Boyko, W. Y. Fujimoto, D. L. Leonetti, and L. Newell-Morris, "Visceral adiposity and risk of type 2 diabetes: a prospective study among Japanese Americans," *Diabetes Care*, vol. 23, no. 4, pp. 465–471, 2000.
- [14] M. K. Tulloch-Reid, R. L. Hanson, N. G. Sebring et al., "Both subcutaneous and visceral adipose tissue correlate highly with insulin resistance in African Americans," *Obesity Research*, vol. 12, no. 8, pp. 1352–1359, 2004.
- [15] T. Hayashi, E. J. Boyko, D. L. Leonetti et al., "Visceral adiposity is an independent predictor of incident hypertension in Japanese Americans," *Annals of Internal Medicine*, vol. 140, no. 12, pp. 992–1000, 2004.
- [16] A. Pascot, S. Lemieux, I. Lemieux et al., "Age-related increase in visceral adipose tissue and body fat and the metabolic risk profile of premenopausal women," *Diabetes Care*, vol. 22, no. 9, pp. 1471–1478, 1999.
- [17] B. H. Goodpaster, S. Krishnaswami, H. Resnick et al., "Association between regional adipose tissue distribution and both type 2 diabetes and impaired glucose tolerance in elderly men and women," *Diabetes Care*, vol. 26, no. 2, pp. 372–379, 2003.
- [18] P. Li, G. Song, and R. Liu, "The correlation study of insulin sensitivity in the primary relatives (with normal glucose tolerance) of the subjects with type 2 diabetes and abdominal fat distribution," *Chinese Geriatric Medical Journal*, vol. 29, no. 4, pp. 445–448, 2009.
- [19] X. Yang, Y. Gao, and Y. Tian, "The significance of Lipids and lipoproteins in cardiovascular disease, diabetes mellitus and tumors," *Journal of Medical Colleges of PLA*, vol. 32, no. 2, pp. 141–142, 2011.
- [20] I. J. Neeland, A. T. Turer, C. R. Ayers et al., "Dysfunctional adiposity and the risk of prediabetes and type 2 diabetes in obese adults," *JAMA*, vol. 308, no. 11, pp. 1150–1159, 2012.
- [21] M. Berings, C. Wehlou, A. Verrijken et al., "Glucose intolerance and the amount of visceral adipose tissue contribute to an increase in circulating triglyceride concentrations in Caucasian obese females," *PLoS ONE*, vol. 7, no. 9, Article ID e45145, 2012.
- [22] N. Ohashi, H. Yamamoto, J. Horiguchi et al., "Visceral fat accumulation as a predictor of coronary artery calcium as assessed by multislice computed tomography in Japanese patients," *Atherosclerosis*, vol. 202, no. 1, pp. 192–199, 2009.
- [23] K. Direk, M. Cecelja, W. Astle et al., "The relationship between DXA-based and anthropometric measures of visceral fat and morbidity in women," *BMC Cardiovascular Disorders*, vol. 13, p. 25, 2013.