

Safety and efficacy of combined antegrade and retrograde endoscopic dilation for complete esophageal obstruction: a systematic review and meta-analysis

Mahendran Jayaraj^{a*}, Babu P. Mohan^{b*}, Harmeet Mashiana^c, Rajesh Krishnamoorthi^d, Douglas G. Adler^e

University of Nevada, Las Vegas; University of Arizona, Banner University Medical Center, Tucson, Arizona; University of Nebraska Medical Center; Digestive Diseases Institute, Virginia Mason Medical Center, Seattle, Washington; University of Utah, School of Medicine, Salt Lake City, Utah, USA

Abstract

Background Complete esophageal obstruction (CEO) due to occlusive proximal stricture occurs after chemoradiation for head and neck cancers. A combined antegrade and retrograde endoscopic technique with controlled recanalization and dilation (CARD) has been shown to be an effective and safe method for regaining and maintaining esophageal luminal patency in the short term.

Methods We conducted a comprehensive search of multiple electronic databases and conference proceedings, including PubMed, EMBASE, and Web of Science databases (from inception through November 2018), to identify studies that reported the outcomes of CARD. The primary outcomes were the pooled rates of technical and clinical success, specifically improvement in dysphagia and independence from percutaneous endoscopic gastrostomy (PEG)-tube feeds. The secondary outcomes were the need for repeat dilations and the risks of complications, such as pneumomediastinum, perforation, and death.

Results From a total of 19 studies (229 cases and 251 procedures) the calculated technical success rate was 88.9% (95% confidence interval [CI] 83.9-92.5, $I^2=0$). The rates of improvement in dysphagia and being PEG-tube free were 58.4% (95%CI 50-66.3, $I^2=12.6$) and 43.5% (95%CI 34.1-53.4, $I^2=30.6$), respectively. The pooled rate of repeat dilations was 78.9% (95%CI 69.7-85.8, $I^2=15.2$). The risks of pneumomediastinum, perforation and death were 9.9% (95%CI 6.2-15.6, $I^2=0$), 8% (95%CI 4.8-13, $I^2=0$), and 6.8% (95%CI 3.4-13.1, $I^2=0$), respectively. Minimal heterogeneity was noted in the analysis.

Conclusions The CARD procedure for CEO has a high technical success rate, but also a high rate of repeat dilations. Given its complexity and associated adverse events, this procedure should be restricted to centers with a high level of expertise.

Keywords Combined antegrade retrograde esophageal dilation, complete esophageal obstruction, systematic review, meta-analysis

Ann Gastroenterol 2019; 32 (4): 361-369

^aDepartment of Gastroenterology and Hepatology, University of Nevada Las Vegas School of Medicine (Mahendran Jayaraj); ^bDepartment of Inpatient Medicine University of Arizona, Banner University Medical Center, Tucson, Arizona (Babu P. Mohan); ^cDepartment of Gastroenterology and Hepatology University of Nebraska Medical Center, Omaha, Nebraska (Harmeet Mashiana); ^dDepartment of Gastroenterology Digestive Diseases Institute, Virginia Mason Medical Center, Seattle, Washington (Rajesh Krishnamoorthi); ^eDivision of Gastroenterology and Hepatology, University of Utah School of Medicine, Salt Lake City, Utah (Douglas G. Adler), USA

*Authors contributed equally to the manuscript

DOI: <https://doi.org/10.20524/aog.2019.0385>

Conflict of Interest: None

Correspondence to: Douglas G. Adler MD, FACP, AGAF, FASGE, Professor of Medicine, Director of Therapeutic Endoscopy, Directory, GI fellowship Program, Gastroenterology and Hepatology, University of Utah School of Medicine, Huntsman Cancer Center, 30N, Salt Lake City, Utah 84132, USA, e-mail: Douglas.adler@hsc.utah.edu

Received 21 December 2018; accepted 6 February 2019; published online 16 May 2019

© 2019 Hellenic Society of Gastroenterology

Introduction

Complete esophageal obstruction (CEO) is rare and usually occurs after radiotherapy in head and neck cancer patients, but it can arise in several other clinical settings, such as gastroesophageal reflux disease, caustic ingestion and Plummer-Vinson syndrome [1,2]. Antegrade reopening and dilation of a CEO is difficult and carries a high risk of esophageal perforation [3]. A combined antegrade-retrograde rendezvous procedure with recanalization and dilation (CARD) may offer better visualization and potentially safer dilation [4]. This procedure was first described by van Twisk *et al* [5] in 1998, followed by Bueno in 2001 [4].

The basic principle of CARD is to endoscopically reach the proximal and distal ends of the stricture to better control the dilation. Patients are usually under general anesthesia. An upper endoscopy determines the upper level of stricture by direct visualization. The gastroesophageal junction is visualized

www.annalsgastro.gr

and entered with an endoscope via the gastrostomy tract after appropriate dilation of the tract. The endoscope is advanced to the level of the stricture. A guidewire is pushed through the stricture under fluoroscopy and grasped by the upper endoscope. Once pulled through the mouth, the guidewire is used as a guide to insert dilators sequentially in antegrade fashion to the desired diameter.

Many case reports and small sized studies have reported on the technical aspects of the procedure [4,6-23]. Only a handful have reported on the actual clinical outcomes, such as swallowing, percutaneous endoscopic gastrostomy (PEG)-tube dependency and/or freedom and the need for repeat dilation [8-10,14]. An overall estimate of the outcomes with CARD for CEO is not known, because there is a paucity of large, good-quality studies. Therefore, we conducted this systematic review and meta-analysis to better understand the clinical outcomes, the technical success, and the safety of the procedure.

Materials and methods

Search strategy

We conducted a comprehensive search of several databases and conference proceedings, including PubMed, EMBASE, and Web of Science databases (earliest inception to November 2018). We followed the Preferred Reporting Items for Systematic Reviews and Meta-Analyses (PRISMA) guidelines [24], using a predefined protocol to identify studies reporting CARD for CEO.

The key words used in the search included a combination of combined antegrade retrograde endoscopic dilation, combined antegrade retrograde dilation, complete esophageal obstruction, esophagus, CARD, CEO, success, adverse events and complications in various combinations to identify original published studies. The search was restricted to studies in human subjects that were published in the English language in peer-reviewed journals. Two authors (MJ, HM) independently reviewed the titles and abstracts of studies identified in the primary search and excluded studies that did not address the research question, based on pre-specified exclusion and inclusion criteria. The full text of the remaining articles was then reviewed to determine whether it contained relevant information. Any discrepancy in article selection was resolved by consensus and in discussion with a co-author (RK). The bibliographic sections of the selected articles, as well as the systematic and narrative articles on the topic, were manually searched for additional relevant articles.

Study selection

In this meta-analysis, we included cohort studies that met the following criteria: 1) CARD procedure for CEO; 2) data available on technical success, clinical success in terms of

dysphagia improvement, and freedom from PEG tube (defined as removal of PEG tube); and 3) data on adverse events. In order to increase the number of studies available for analysis, studies were also included irrespectively of the geography, abstract/manuscript status and initial radiotherapy treatment data, as long as they provided the primary data needed for the analysis. Our exclusion criterion was single procedure case reports.

In case of multiple publications from the same cohort, data from the most recent comprehensive report would be included. However, we did not encounter any such studies in our selection process.

Data abstraction and quality assessment

Data on study-related characteristics as well as reported outcomes in the individual studies were abstracted onto a standardized form by at least 2 authors (MJ, BPM) independently. The quality of the studies was assessed using the Newcastle-Ottawa scale for cohort studies [25]. This quality score consisted of 7 questions: representative of the average adult in the community (1 point for population-based studies, 0.5 point for multi-center studies; 0 points for a single-center hospital-based study); large cohort size (1 point if >20 cases, 0.5 point if between 10 and 20 cases, 0 points if <10 cases); information on technical success (1 point if reported; 0 points if not reported); information on clinical success (1 point if reported, 0 points if not reported); information on adverse events (1 point if reported, 0 points if not reported); type of article write-up (1 point if original manuscript, 0.5 point if abstract); and attrition rate (1 point if all CARD-CEO cases accounted for, 0.5 point if <50% cases not accounted for, 0 points if >50% cases not accounted for). Scores of >5, 3 to 5, and <3 were considered suggestive of high-quality, medium-quality, and low-quality studies, respectively.

Outcomes assessed

The primary analysis focused on assessing the outcomes of the CARD procedure. The outcomes measured and analyzed were: 1) technical success; 2) clinical success in terms of dysphagia improvement, PEG-tube dependence, PEG-tube free; and 3) the need for repeated dilation. The secondary outcomes assessed were complications from the CARD procedure: 1) pneumomediastinum; 2) perforation; and 3) death. Subgroup analysis was performed for studies with sample size >5 patients and <5 patients.

Statistical analysis

We used meta-analysis techniques to calculate the pooled estimates in each case, following the methods suggested by DerSimonian and Laird [26], using the random-effects

model. When the incidence of any effect was zero in a study, a correction of 0.5 was added to the number of incident cases before statistical analysis [27]. We assessed heterogeneity between study-specific estimates using two methods [28,29]. First, the Cochran Q statistical test for heterogeneity was performed, which tests the null hypothesis that all studies in a meta-analysis have the same underlying magnitude of effect. Second, when heterogeneity was present, in order to estimate what proportion of total variances across studies was due to heterogeneity rather than chance, the I^2 statistic was calculated. In this, values of <30%, 30-60%, 61-75% and >75% were suggestive of low, moderate, substantial and considerable heterogeneity, respectively [30]. Since the random-effects model estimates an average effect, we also calculated the 95% prediction interval, which deals with the dispersion of the effects [31]. Publication bias was ascertained, qualitatively by visual inspection of a funnel plot and quantitatively using Egger's test of the intercept [32]. All analyses were performed by using Comprehensive Meta-Analysis software, version 3 (BioStat, Englewood, NJ).

Results

Search results and population characteristics

From a total of 516 citations identified using our search strategy, 36 studies reported clinical success, technical success and adverse events in patients undergoing CARD for CEO. Of these, 17 studies were excluded because they did not meet the study criteria. 19 studies [4,6-23] were included in the final analysis. A schematic diagram of the study selection is provided in Fig. 1.

The majority of the studies were from the USA. The analysis included a total of 229 patients who underwent a total of 251 CARD procedures. The mean age ranged from 56-78.5 years. In 79% of the cases the CEO was due to prior radiotherapy. Other less common causes were gastroesophageal reflux disease, Plummer-Vinson syndrome, and caustic injury. Dysphagia was assessed in different ways, as follows: Dakkak and Bennet scores, swallow therapist assessment, and functional oral intake scale levels.

Characteristics and quality of included studies

Table 1 presents the characteristics of the included studies and Supplementary Table 1 shows the quality of the included studies. All studies reported single-center data. All of the studies had definite information on the use of CARD in CEO cases. All studies reported adequately on the technical success. Three studies [11,13,17] did not provide complete information on the clinical success. We included 3 abstracts [8,14,16], while the remainder were full manuscripts. Overall, 4 studies [8-10,14] were considered high quality and the rest were considered medium quality. None were of low quality.

Primary and secondary outcomes

All results, along with a subgroup analysis of studies with >5 patients, are summarized in Table 2. The pooled rate of technical success was 88.9% (95% confidence interval [CI] 83.9-92.5, $I^2=0$) (Fig. 2). This means that 88.9% of patients who underwent CARD had the obstruction traversed. The pooled rate of dysphagia improvement was 58.4% (95%CI 50-66.3, $I^2=12.6$). This means that approximately 40% of patients had no improvement in dysphagia and needed alternative management, such as repeat dilation or PEG-tube feeding, even though the CARD procedure was successful. This can be seen from the fact that the pooled rate of being PEG-tube free was 43.5% (95%CI 34.1-53.4, $I^2=30.6$), while the pooled rate of being PEG-tube dependent was 41.5% (95%CI 32.7-50.8, $I^2=32$). The pooled rate of repeat dilations after CARD was 78.9% (95%CI 69.7-85.8, $I^2=15.2$). Subgroup analysis of the studies based on the sample size of >5 and <5 showed that clinical outcomes, including dysphagia improvement 81.9% (95%CI 57.5-93.8, $I^2=0$) and PEG-tube freedom 72.6% (95%CI 35.5-92.8, $I^2=24$), were slightly superior in studies with less than 5 patients (Fig. 3, and Suppl. Fig. 1-3).

The pooled rate of perforation was 8% (95%CI 4.8-13, $I^2=0$) and that of pneumomediastinum was 9.9% (95%CI 6.2-15.6, $I^2=0$). Subgroup analysis showed that the rates were higher in studies with less than 5 patients: perforation 10.9% (95%CI 3.2-31.4, $I^2=0$) and pneumomediastinum 16.9% (95%CI 5.5-41.5, $I^2=0$). This could be a small study effect on the meta-analysis, which is why we did the subgroup analysis (Suppl. Fig. 4,5).

The pooled rate of death was 6.8% (95%CI 3.4-13.1, $I^2=0$), although the actual reported number of deaths was 1, not procedure-related (Suppl. Fig. 6).

Sensitivity analysis and publication bias

To assess whether any one study had a dominant effect on the meta-analysis, we excluded one study at a time and analyzed its effect on the main summary estimate and heterogeneity. According to this analysis, no single study significantly affected the primary outcome. Based on a visual inspection of the funnel plot as well as quantitative measurement using the Egger regression test ($P=0.27$), there was no evidence of publication bias (Suppl. Fig. 7).

Discussion

Our study is the first meta-analysis to report on the outcomes of the CARD procedure in the management of CEO. Based on our analysis, we report an overall technical success rate of 89%. CARD is not a new concept and has been used for the open surgical treatment of distal esophageal stenosis during anti-reflux procedures [4]. In most cases, patients are too frail to undergo surgery and are usually considered suitable for CARD. The most difficult part of the procedure is gaining

access through the completely obstructed esophagus and the chances of recurrence are high [13]. Repeat dilations are often needed when symptoms recur. Based on our study, the pooled rate of repeat dilation after CARD was 79%. This high rate can be partly explained by the complex nature of the causes for CEO. The major cause of CEO from the studies reviewed was radiotherapy for head and neck cancer [1,2,24,25]. The other well-known causes are caustic ingestion, chronic reflux, and esophageal surgery [24,25].

We assessed the clinical outcomes of CARD for CEO by calculating the pooled rates of dysphagia improvement, being PEG-tube free and being PEG-tube dependent. We report a dysphagia improvement rate of 58.4%, albeit with some variability in the methodology used to report the improvement. This was reported to be 44% in the largest case series to date

by Grooteman *et al* [9]. They used the Dakkak and Bennet score [26] to assess improvement in swallowing. This score is a combination of subjective and objective parameters based on patients' accounts of their eating capacity and their observed performance. Goguen *et al* [22] reported dysphagia improvement in terms of achieved diet as recorded by swallow therapists, whereas Bertolini *et al* [20] used the functional oral intake scale [27]. Patients who failed to show a successful clinical outcome have few other options to choose from other than being on a PEG-tube to meet nutritional needs. These include a novel technique called per-oral endoscopic tunneling for the restoration of the esophagus (POETRE) and/or placement of a stent [33]. Partially covered, fully covered and biodegradable stents have been used to this end [34]. A multicenter series studying the natural history and management of refractory

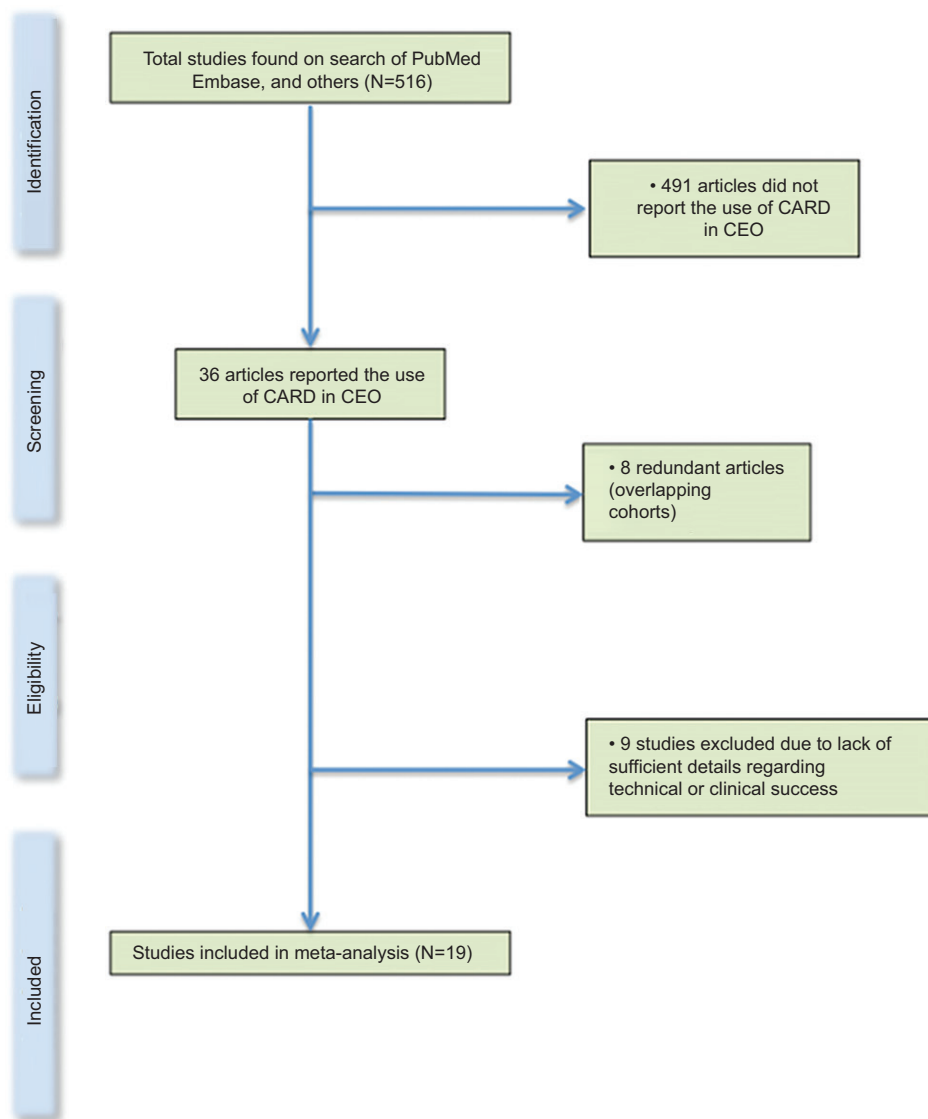


Figure 1 Study flowchart and section CARD, combined antegrade and retrograde endoscopic dilation; CEO, complete esophageal obstruction

Table 1 Characteristics of included cohort studies

Author	Country	Study type	Article type	Total patients	Mean age	Initial radiotherapy	Total CARD	Technical success	Number needing dilations
Fowlkes <i>et al</i> [10]	USA	Retrospective	M	15	67	15	16	16	14
Bertolini <i>et al</i> [6]	Switzerland	Retrospective	M	6	71	5	6	5	5
Grooteman <i>et al</i> [14]	Netherlands, USA	Retrospective	A	35	65	35	35	35	31
Garcia <i>et al</i> [11]	USA	NR	M	9	71.3	6	9	9	4
Maple <i>et al</i> [17]	USA	Retrospective	M	8	65	8	7	7	NR
Dellon <i>et al</i> [9]	USA	Retrospective	M	12	56	12	12	10	10
Goguen <i>et al</i> [13]	USA	Retrospective	M	45	63	45	63	55	NR
Cavell <i>et al</i> [8]	USA	Case study	A	24	63.25	24	24	22	20
Perbani <i>et al</i> [19]	USA	Retrospective	M	6	71.6	6	6	4	2
Moyer <i>et al</i> [18]	USA	Case study	M	2	78.5	2	2	2	2
Mallaris <i>et al</i> [16]	USA	Case series	A	2	NR	2	2	2	1
Boyce <i>et al</i> [7]	USA	Retro case review	M	30	62	NR	33	31/33	NR
Bueno <i>et al</i> [4]	USA	Case series	M	10	67.4	NR	10	10	7
Gavriel <i>et al</i> [12]	Australia	Case series	M	5	NR	5	5	5	5
Lew <i>et al</i> [15]	USA	Case series	M	5	66	5	5	5	5
Schembre <i>et al</i> [20]	USA	Case series	M	5	60	5	5	5	5
Steele <i>et al</i> [22]	USA	Case series	M	7	65	7	7	6	7
Van Twisk <i>et al</i> [23]	Netherlands	Case series	M	2	NR	none	2	2	2
Castro Soares <i>et al</i> [21]	Switzerland	Case series	M	1	61	Surgery and then RT	2	2	2

Author	PEG tube free	Peg tube dependency	Dysphagia improvement	Perforation	Death	Pneumo-mediastinum	Others	Dysphagia scoring	Study quality
Fowlkes <i>et al</i> [10]	6	9	6	0	1	0	3	Custom scale	High
Bertolini <i>et al</i> [6]	3	3	3	0	0	1	0	FOIS	Medium
Grooteman <i>et al</i> [14]	7	20	17	3	0	0	1	Dakkak and Bennett	High
Garcia <i>et al</i> [11]	NR	NR	6	0	0	0	0	Custom scale	Medium
Maple <i>et al</i> [17]	4	3	4	2	0	0	0	NR	Medium

(Contd...)

Table 1 (Continued)

Author	Country	Study type	Article type	Total patients	Mean age	Initial radiotherapy	Total CARD	Technical success	Number needing dilations
Dellon <i>et al</i> [9]	6	6	8	1	0	0	0	NR	High
Goguen <i>et al</i> [13]	27	18	36	2	NR	8	8	Custom scale	Medium
Cavell <i>et al</i> [8]	14	8	16	0	0	0	0	NR	High
Perbtani <i>et al</i> [19]	2	4	6	0	0	0	0	Custom scale	Medium
Moyer <i>et al</i> [18]	NR	NR	1	NR	NR	NR	NR	Custom scale	Medium
Mallaris <i>et al</i> [16]	NR	NR	NR	0	0	0	0	NR	Medium
Boyce <i>et al</i> [7]	13	10	15	NR	NR	NR	5	Custom scale	Medium
Bueno <i>et al</i> [4]	NR	NR	NR	0	0	0	0	NR	Medium
Gavriel <i>et al</i> [12]	NR	NR	4	0	0	1	NR	NR	Medium
Lew <i>et al</i> [15]	5	0	5	0	0	0	0	NR	Medium
Schembre <i>et al</i> [20]	3	2	5	0	0	0	2 abscess	NR	Medium
Steele <i>et al</i> [22]	NR	NR	6	1	0	0	0	NR	Medium
Van Twisk <i>et al</i> [23]	NR	NR	2	0	0	0	0	NR	Medium
Castro Soares <i>et al</i> [21]	NR	NR	NR	NR	NR	NR	NR	NR	Medium

CARD, combined antegrade and retrograde esophageal dilation; PEG, percutaneous gastrostomy; RT, radiotherapy; M, manuscript; A, abstract; NR, not reported

benign esophageal strictures showed that the long-term outcomes with serial balloon dilations and/or stent placement appear to be suboptimal, with only one third achieving clinical resolution, defined as no need for endoscopic interventions for at least 6 months [35]. The role of stent placement for refractory benign esophageal strictures is not well established. A meta-analysis by Fuccio *et al* shows that stent placement was effective in only 40% of patients [34]. A recent randomized controlled trial evaluated the outcomes comparing serial balloon dilation and placement of biodegradable stents for benign esophageal strictures and reported fewer interventions in the stented group at 3 months, albeit with similar outcomes at 6 months [36].

Based on our analysis, we report a PEG-tube free rate of 43.5% and a PEG-tube dependency rate of 41.5%. The reported

data on the utilization of PEG-tube after CARD varied among the studies. Although a PEG-tube free outcome would mean taking food orally, studies did report patients who were being fed by mouth and at the same time were using the PEG-tube to meet their daily nutrition goal. A component of the reported PEG-tube dependent patients were from technically unsuccessful cases. In other words, we were unable to directly attribute the PEG-tube outcomes to the technically successful CARD procedures.

In our analysis of adverse events, the most commonly reported ones were perforation, pneumomediastinum, and death. The pooled rate of perforation was 8% and the pooled rate of pneumomediastinum was about 10%. These adverse

Table 2 Results

Parameter	Overall	Sample size >5	Sample size <5
		(95%CI, I ²)	
Technical success	88.9% (83.9-92.5, 0)	89.1% (83.7-92.9, 0)	87.7% (69.9-95.6, 0)
Dysphagia improvement	58.4% (50-66.3, 12.6)	55.3% (48.4-61.9, 9.5)	81.9% (57.5-93.8, 0)
PEG free	43.5% (34.1-53.4, 30.6)	41.5% (33.1-50.3, 22.9)	72.6% (35.5-92.8, 24)
PEG dependent	41.5% (32.7-50.8, 32)	42.5% (33-52.5, 39.6)	28.3% (7.2-66.8, 4.8)
Repeat dilation	78.9% (69.7-85.8, 15.2)	77.3% (66-85.7, 46.8)	84.6% (63.4-94.5, 0)
Perforation	8% (4.8-13, 0)	7.5% (4.3-12.8, 0)	10.9% (3.2-31.4, 0)
Pneumo-mediastinum	9.9% (6.2-15.6, 0)	8.9% (5.3-14.6, 0)	16.9% (5.5-41.5, 0)
Death	6.8% (3.4-13.1, 0)	5% (2.2-11, 0)	14.1% (4.1-38.9, 0)

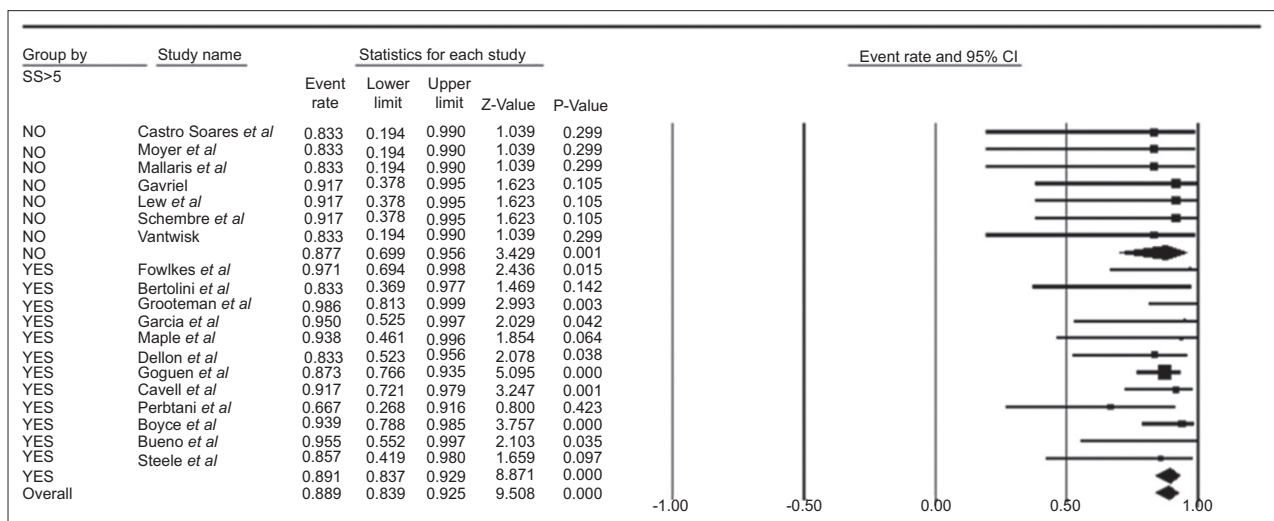


Figure 2 Forest plot. Technical success of combined antegrade and retrograde endoscopic dilation incomplete esophageal obstruction by sample size (SS) <5 patients and >5 patients
CI, confidence interval

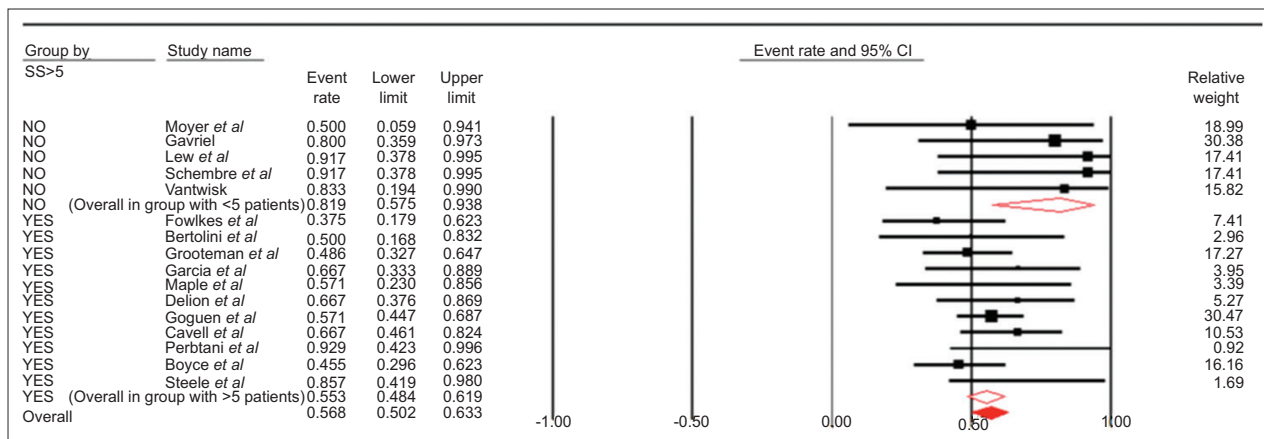


Figure 3 Forest plot. Dysphagia improvement by sample size (SS) <5 patients and >5 patients
CI, confidence interval

events are very important, as they carry a high morbidity and mortality potential in an already frail patient. The pooled rate of death was 6.8% and this value needs to be interpreted with caution. Only one death event was reported from the included studies and it was not associated with the CARD procedure, but was rather due to the underlying disease process. Our calculated value seems high as a result of the 0.5 continuity correction applied to the outcomes that were zero.

The strengths of this review are as follows: systematic literature search with well-defined inclusion criteria; carefully excluding redundant studies; detailed extraction of overall data in terms of technical and clinical success outcomes; extraction of data on adverse events; rigorous evaluation of study quality; and robust statistics to accept and/or refute our findings. Low heterogeneity and absence of publication bias positively influence the validity of our analysis. We subgrouped our outcomes based on the sample size (total patients <5 and total patients >5). Considerable variation between these groups was observed in the calculated rates of clinical success. In this way, we hoped to demarcate the effects of small-size studies on the reported outcomes of an uncommon procedure in a rare disease entity. Thus, our meta-analysis results are an important addition to the current literature.

Our study has limitations, most of which are inherent to any meta-analysis. Our included studies had many retrospective reviews that added to selection bias. Although the included studies had good data on technical success, they varied in their reports of clinical outcomes. The definitions of being PEG-tube dependent and being PEG-tube free were not uniform across the studies. There is no standard scale for measuring dysphagia improvement and different measures were used in the included studies. Moreover, the included studies were not entirely representative of the general population and community practice. However, this estimate is still the best available estimate and may be used in predicting clinical outcomes and counseling patients on the CARD procedure. We were unable to identify a high-risk subset of patients and risk-stratify the reported outcomes. The current literature is clearly limited and more large-scale prospective studies are needed to evaluate the CARD procedure in CEO cases. Stents with biodegradable and

lumen-apposing properties seem to show promising results in the management of gastrointestinal strictures.

In conclusion, we determined that the CARD procedure in cases of CEO has a technical success rate of 90%, with a 79% repeat dilatation rate. Less than half of the patients would be expected to remain PEG-dependent and a majority will improve with regard to their ability to swallow. Based on our reported adverse events, the procedure should be offered after taking into consideration patient characteristics, endoscopist experience, and availability of resources.

Summary Box

What is already known:

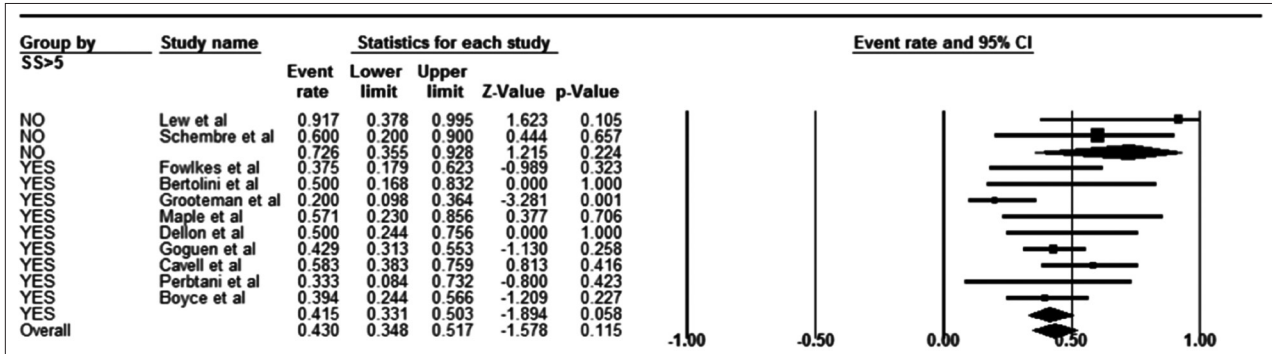
- A combined antegrade and retrograde rendezvous procedure with recanalization and dilation (CARD) offers better visualization and safer dilation of complete esophageal obstruction (CEO)
- Outcomes of CARD in CEO have been reported from a few small-sized studies; therefore, an overall good-quality estimate of this procedure is not known

What the new findings are:

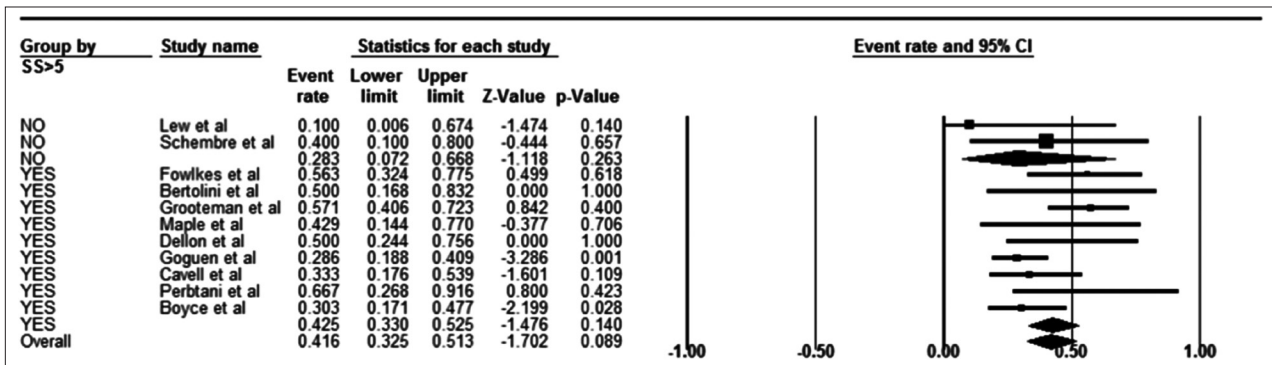
- Estimated technical success of CARD in CEO is 88.9%
- After a CARD procedure for CEO, the estimated dysphagia improvement is 58.4%, being PEG-tube free is 43.5%, and being PEG-tube dependent is 41.5%
- Estimated rate of repeat dilations after CARD in CEO is 78.9%
- Estimated pooled rate of perforation with the procedure is 8% and pneumomediastinum is about 10%

References

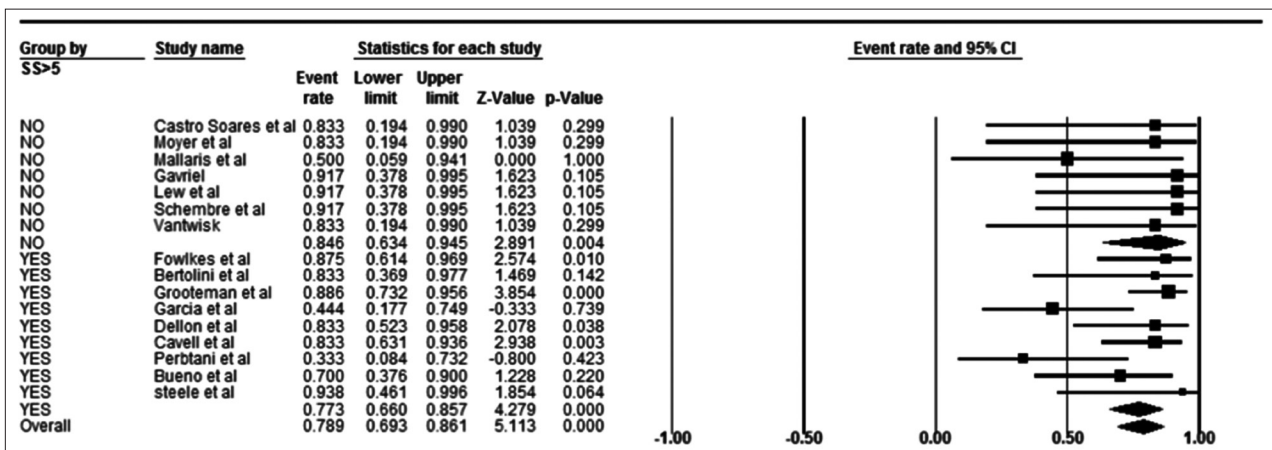
- Coia LR, Myerson RJ, Tepper JE. Late effects of radiation therapy on the gastrointestinal tract. *Int J Radiat Oncol Biol Phys* 1995;**31**:1213-1236.
- Laurell G, Kraepelien T, Mavroidis P, et al. Stricture of the proximal esophagus in head and neck carcinoma patients after radiotherapy. *Cancer* 2003;**97**:1693-1700.
- Banerjee A, Rao KS, Nachiappan M. Intrathoracic oesophageal perforations following bougienage: a protocol for management. *Aust N Z J Surg* 1989;**59**:563-566.
- Bueno R, Swanson SJ, Jaklitsch MT, Lukanich JM, Mentzer SJ, Sugarbaker DJ. Combined antegrade and retrograde dilation: a new endoscopic technique in the management of complex esophageal obstruction. *Gastrointest Endosc* 2001;**54**:368-372.
- van Twisk JJ, Brummer RJ, Manni JJ. Retrograde approach to pharyngo-esophageal obstruction. *Gastrointest Endosc* 1998;**48**:296-299.
- Bertolini R, Meyenberger C, Putora PM, et al. Endoscopic dilation of complete oesophageal obstructions with a combined antegrade-retrograde rendezvous technique. *World J Gastroenterol* 2016;**22**:2366-2372.
- Boyce HW, Estores DS, Gaziano J, Padhya T, Runk J. Endoscopic lumen restoration for obstructive aphagia: outcomes of a 25-year experience. *Gastrointest Endosc* 2012;**76**:25-31.
- Cavell LK, Wong RJ, Shike M, et al. Tu1574 Long term outcomes after endoscopic restoration of complete cervical esophageal obstruction. *Gastrointest Endosc* 2012;**75**:AB451-AB452.
- Dellon ES, Cullen NR, Madanick RD, et al. Outcomes of a combined antegrade and retrograde approach for dilatation of radiation-induced esophageal strictures (with video). *Gastrointest Endosc* 2010;**71**:1122-1129.
- Fowlkes J, Zald PB, Andersen P. Management of complete esophageal stricture after treatment of head and neck cancer using combined antegrade retrograde esophageal dilation. *Head Neck* 2012;**34**:821-825.
- Garcia A, Flores RM, Schattner M, et al. Endoscopic retrograde dilation of completely occlusive esophageal strictures. *Ann Thorac Surg* 2006;**82**:1240-1243.
- Gavriel H, Duong C, Spillane J, Sizeland A. Bidirectional esophageal dilatation in pharyngo-esophageal stenosis postradiotherapy. *Head Neck* 2013;**35**:733-737.
- Goguen LA, Norris CM, Jaklitsch MT, et al. Combined antegrade and retrograde esophageal dilation for head and neck cancer-related complete esophageal stenosis. *Laryngoscope* 2010;**120**:261-266.
- Grooteman KV, Wong Kee Song LM, Vlegaar FP, Siersema PD, Baron TH. Functional outcome of patients treated for radiation-induced complete esophageal obstruction after successful endoscopic recanalization (with video). *Gastrointest Endosc* 2014;**80**:175-181.
- Lew RJ, Shah JN, Chalian A, Weber RS, Williams NN, Kochman ML. Technique of endoscopic retrograde puncture and dilatation of total esophageal stenosis in patients with radiation-induced strictures. *Head Neck* 2004;**26**:179-183.
- Malliaris SD, Nemechek AJ, Bulat R, Jaffe BM. Double endoscopic technique for operative dilation of esophageal strictures resistant to conventional therapy. *J La State Med Soc* 2007;**159**:159-163, 165.
- Maple JT, Petersen BT, Baron TH, Kasperbauer JL, Wong Kee Song LM, Larson MV. Endoscopic management of radiation-induced complete upper esophageal obstruction with an antegrade-retrograde rendezvous technique. *Gastrointest Endosc* 2006;**64**:822-828.
- Moyer MT, Stack BC Jr, Mathew A. Successful recovery of esophageal patency in 2 patients with complete obstruction by using combined antegrade retrograde dilation procedure, needle knife, and EUS needle. *Gastrointest Endosc* 2006;**64**:789-792.
- Perbtani Y, Suarez AL, Wagh MS. Emerging techniques and efficacy of endoscopic esophageal reconstruction and lumen restoration for complete esophageal obstruction. *Endosc Int Open* 2016;**4**:E136-E142.
- Schembre D, Dever JB, Glenn M, Bayles S, Brandabur J, Kozarek R. Esophageal reconstitution by simultaneous antegrade/retrograde endoscopy: re-establishing patency of the completely obstructed esophagus. *Endoscopy* 2011;**43**:434-437.
- Soares PC, Bouayed S, Dulguerov P, Frossard JL. Recurrent complete pharyngo-oesophageal stricture treated by multidisciplinary antegrade-retrograde endoscopic dilation. *Case Rep Gastroenterol* 2016;**10**:560-567.
- Steele NP, Tokayer A, Smith RV. Retrograde endoscopic balloon dilation of chemotherapy- and radiation-induced esophageal stenosis under direct visualization. *Am J Otolaryngol* 2007;**28**:98-102.
- van Twisk JJ, Brummer RJ, Manni JJ. Retrograde approach to pharyngo-esophageal obstruction. *Gastrointest Endosc* 1998;**48**:296-299.
- Moher D, Liberati A, Tetzlaff J, Altman DG; PRISMA Group. Preferred reporting items for systematic reviews and meta-analyses: the PRISMA statement. *Ann Intern Med* 2009;**151**:264-269, W64.
- Stang A. Critical evaluation of the Newcastle-Ottawa scale for the assessment of the quality of nonrandomized studies in meta-analyses. *Eur J Epidemiol* 2010;**25**:603-605.
- DerSimonian R, Laird N. Meta-analysis in clinical trials. *Control Clin Trials* 1986;**7**:177-188.
- Sutton AJ, Abrams KR, Jones DR, et al. Methods for meta-analysis in medical research. John Wiley & Sons Ltd.: New York; 2000, pp. 205-228.
- Kanwal F, White D. Systematic reviews and meta-analyses in clinical gastroenterology and hepatology. *Clin Gastroenterol Hepatol* 2012;**10**:1184-1186.
- Higgins JP, Thompson SG, Deeks JJ, Altman DG. Measuring inconsistency in meta-analyses. *BMJ* 2003;**327**:557-560.
- Guyatt GH, Oxman AD, Kunz R, et al. GRADE guidelines: 7. Rating the quality of evidence inconsistency. *J Clin Epidemiol* 2011;**64**:1294-1302.
- Riley RD, Higgins JP, Deeks JJ. Interpretation of random effects meta-analyses. *BMJ* 2011;**342**:d549.
- Easterbrook PJ, Berlin JA, Gopalan R, Matthews DR. Publication bias in clinical research. *Lancet* 1991;**337**:867-872.
- Wagh MS, Yang D, Chavalitdhamrong D, Draganov PV. Per-oral endoscopic tunneling for restoration of the esophagus (POETRE). *Gastrointest Endosc* 2014;**80**:330.
- Fuccio L, Hassan C, Frazzoni L, Miglio R, Repici A. Clinical outcomes following stent placement in refractory benign esophageal stricture: a systematic review and meta-analysis. *Endoscopy* 2016;**48**:141-148.
- Repici A, Small AJ, Mendelson A, et al. Natural history and management of refractory benign esophageal strictures. *Gastrointest Endosc* 2016;**84**:222-228.
- Walter D, van den Berg MW, Hirdes MM, et al. Dilation or biodegradable stent placement for recurrent benign esophageal strictures: a randomized controlled trial. *Endoscopy* 2018;**50**:1146-1155.



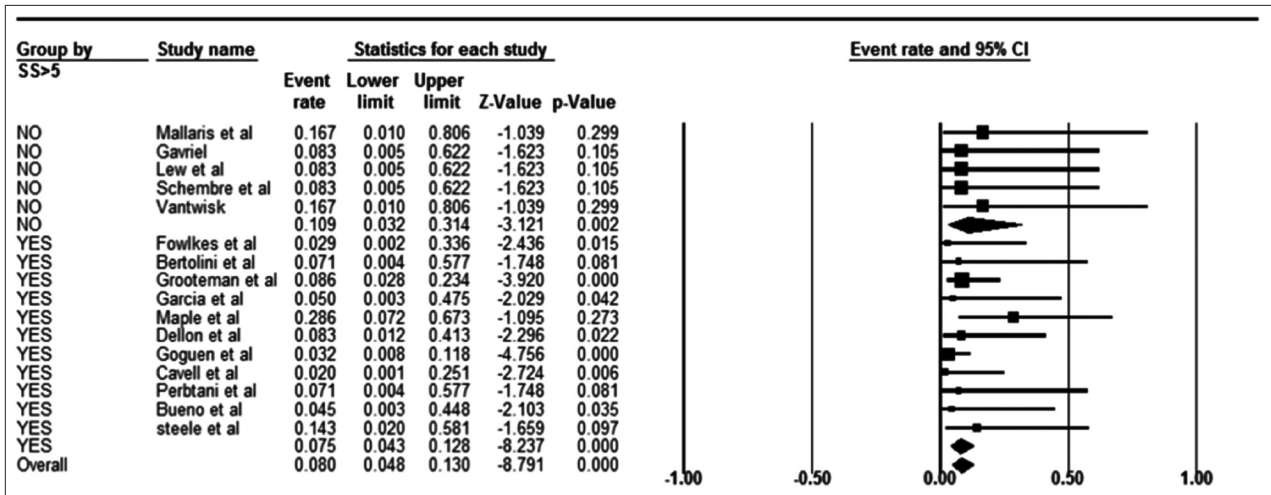
Supplementary Figure 1 Forest plot. Free of percutaneous endoscopic gastrostomy tube by sample size (SS) <5 patients and >5 patients
CI, confidence interval



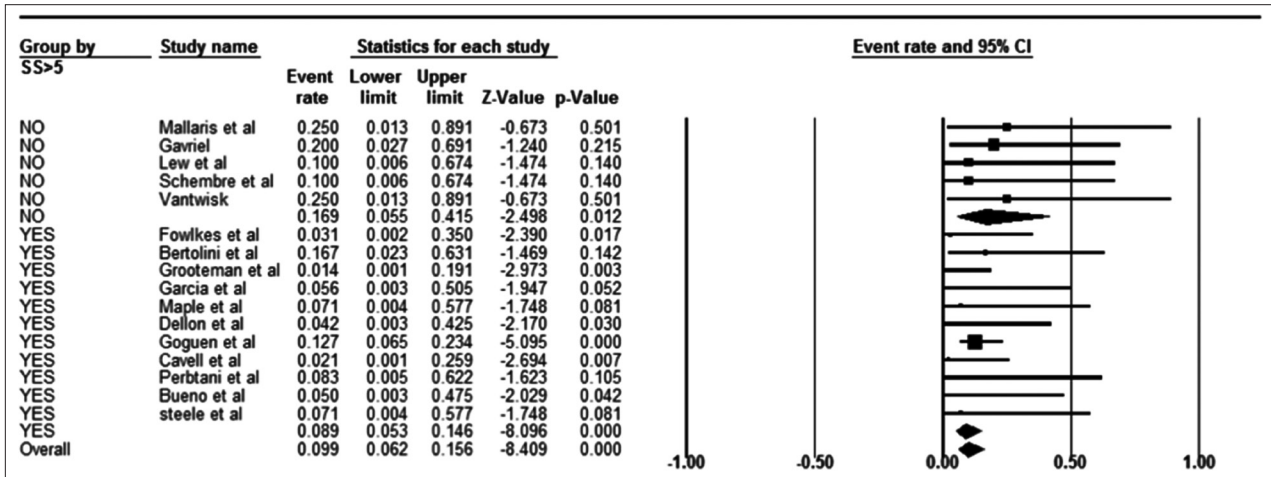
Supplementary Figure 2 Forest plot. percutaneous endoscopic gastrostomy tube dependency by sample size (SS) <5 patients and >5 patients
CI, confidence interval



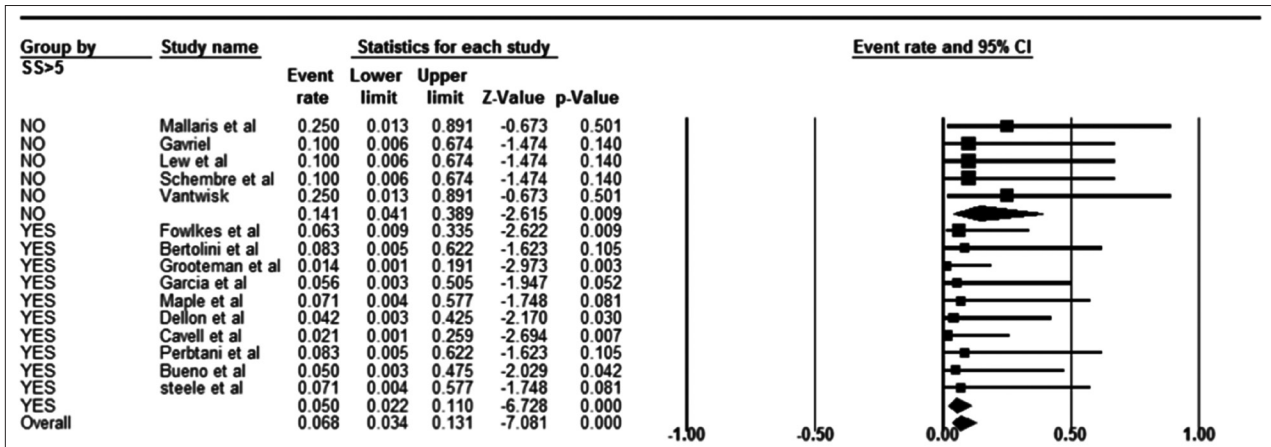
Supplementary Figure 3 Forest plot. Repeat dilation by sample size (SS) <5 patients and >5 patients
CI, confidence interval



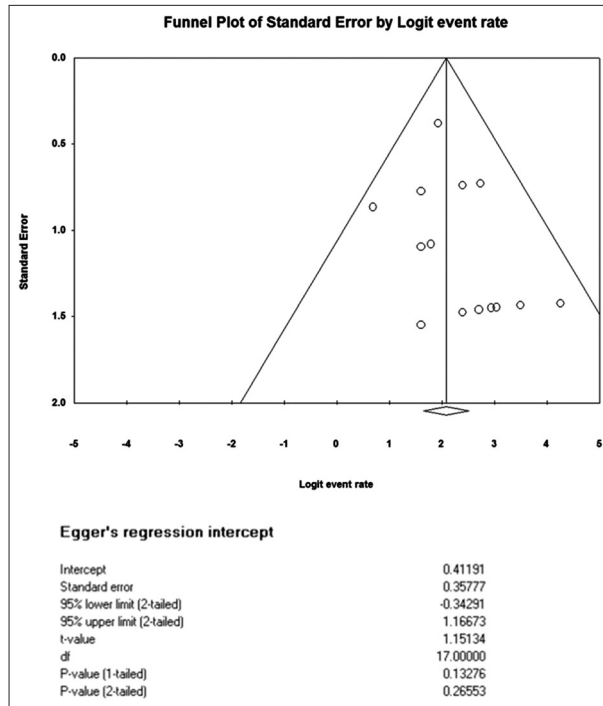
Supplementary Figure 4 Forest plot. Perforation by sample size (SS) <5 patients and >5 patients
CI, confidence interval



Supplementary Figure 5 Forest plot. Pneumo-mediastinum by sample size (SS) <5 patients and >5 patients
CI, confidence interval



Supplementary Figure 6 Forest plot. Death by sample size (SS) <5 patients and >5 patients
CI, confidence interval



Supplementary Figure 7 Funnel plot and Egger's intercept. All studies

Supplementary Table 1 Study quality assessment by New-Castle Ottawa scale

Question	Representative of the average adult in the community	Cohort size	Information on technical success	Information on clinical success	Information on adverse events	Type of article write up	Attrition rate	Total	Quality
Scoring scheme	1 point: population-based studies, 0.5 point: multicenter studies, 0 point: single-center hospital-based study	1 point: >20 cases 0.5 point: 10-20 cases 0 point: <10 cases	1 point: reported 0 point: not reported	1 point: reported 0 point: not reported	1 point: information reported 0 point: not reported	1 point: original manuscript 0.5 point: abstract	1 point: all cases accounted for 0.5 point: <50% cases not accounted for 0 point: >50% cases not accounted for	(maximum = 7; high >5; medium 3-5; low <3)	
Fowlkes	0	0.5	1	1	1	1	1	5.5	High
Bertolini	0	0	1	1	0	1	1	4	Medium
Grooteman	0	1	1	1	1	0.5	1	5.5	High
Garcia	0	0	1	0	0	1	1	3	Medium
Maple	0	0	1	0	1	1	1	4	Medium
Dellon	0	0.5	1	1	1	1	1	5.5	High
Goguen	0	1	1	0	0	1	0.5	3.5	Medium
Cavell	0	1	1	1	1	0.5	1	5.5	High
Perbtani	0	0	1	1	1	1	1	5	Medium
Moyer	0	0	1	1	0	1	1	4	Medium
Mallaris	0	0	1	1	1	0.5	1	4.5	Medium
Boyce	0	1	1	1	0	1	1	5	Medium
Bueno	0	0	1	1	1	1	1	5	Medium
Gavriel	0	0	1	1	1	1	1	5	Medium
Lew	0	0	1	1	1	1	1	5	Medium
Schembre	0	0	1	1	1	1	1	5	Medium
Steele	0	0	1	1	1	1	1	5	Medium
Vantwisk	0	0	1	1	1	1	1	5	Medium
Castro Soares	0	0	1	1	0	1	1	4	Medium