



Published in final edited form as:

*Nat Med.* 2009 July ; 15(7): 746–749. doi:10.1038/nm.1993.

## ALEFACEPT PROMOTES COSTIMULATION BLOCKADE BASED ALLOGRAFT SURVIVAL IN PRIMATES

T.A. Weaver<sup>1,2</sup>, A.H. Charafeddine, MD<sup>1,2</sup>, A. Agarwal, MD<sup>1</sup>, A.P. Turner, MD<sup>1</sup>, M. Russell, MD<sup>1</sup>, F.V. Leopardi<sup>1,2</sup>, R.L. Kampen<sup>1,2</sup>, L. Stempora<sup>1</sup>, M. Song, MD, PhD<sup>1</sup>, C.P. Larsen, MD, D.Phil<sup>1</sup>, and A.D. Kirk, MD, PhD<sup>1,2</sup>

<sup>1</sup>Transplantation Branch, National Institute of Diabetes, Digestive and Kidney Diseases, National Institutes of Health, Department of Health and Human Services, Bethesda, MD

<sup>2</sup>Emory Transplant Center, Emory University, Atlanta, GA

### Abstract

Memory T-cells promote allograft rejection particularly in costimulation blockade (CoB)-based immunosuppressive regimens. Here we show that the CD2-specific fusion protein alefacept (LFA3-Ig) selectively eliminates memory T-cells and when combined with a CoB-based regimen utilizing CTLA4-Ig, prevents renal allograft rejection and alloantibody formation in primates. These results support the development of an immediately translatable regimen for the prevention of allograft rejection without the use of calcineurin inhibitors, steroids, or pan-T-cell depletion.

Calcineurin inhibitors and glucocorticosteroids are commonly used to prevent the rejection of allografted organs; however, both agents promote many side effects (1). Blockade of the CD28/B7 costimulation pathway has been suggested as a means of preventing allograft rejection without these side effects, and indeed, the CD28/B7-specific fusion protein CTLA4-Ig has been shown to induce permanent engraftment of allografts in some rodent models, particularly when combined with the drug sirolimus and/ or donor specific transfusion (DST) (2, 3). Unfortunately, CTLA4-Ig with or without sirolimus is insufficient to prevent rejection in primates (reviewed in 4).

Several mechanisms of CoB resistant rejection have been demonstrated experimentally with many implicating T-cells with a memory phenotype (5). T-cells gain this phenotype through prior cognate antigen exposure, heterologous cross-reactivity between alloantigens and environmental pathogens, or homeostatic expansion, and thereafter either lack CD28 or otherwise have reduced costimulation requirements (6, 7). We have therefore been interested in developing adjuvant therapies that transiently but specifically neutralize memory T ( $T_M$ )-cells to facilitate the clinical use of CoB in transplantation, preferably adopting maneuvers that avoid  $T_M$  development through homeostatic activation (e.g. pan T-cell depletion).

Users may view, print, copy, and download text and data-mine the content in such documents, for the purposes of academic research, subject always to the full Conditions of use:[http://www.nature.com/authors/editorial\\_policies/license.html#terms](http://www.nature.com/authors/editorial_policies/license.html#terms)

Address Correspondence to: Allan D. Kirk, MD, PhD, Emory Transplant Center, 101 Woodruff Circle, #5105-WMB, Atlanta, GA 30322, Tel: 404.727.8380, Fax: 404.727.3660, ADKirk@emory.edu.

One candidate agent is LFA3-Ig (alefacept, Amevive, Astellas, Inc.), a dimeric fusion protein consisting of the CD2-binding portion of the human lymphocyte function-associated antigen-3 (LFA-3) linked to the Fc portion of human IgG1. It is currently approved for the clinical treatment of psoriasis, and its therapeutic effect has been linked to its ability to deplete  $T_M$ -cells (8–10). We therefore investigated LFA3-Ig as an adjuvant agent for use with the CoB-based regimen of CTLA4-Ig, sirolimus and/or DST.

Renal allografted rhesus monkeys were treated with LFA3-Ig and/or CTLA4-Ig weekly for 8 weeks, oral sirolimus daily for 90 days, and pre-transplant whole blood DST (see Supplementary Methods and Supplementary Fig. 1 online). Control animals receiving no treatment, sirolimus alone, sirolimus with DST, sirolimus with DST and CTLA4-Ig, or sirolimus with DST and LFA3-Ig had progressively increased survival; however, no animals remained rejection-free beyond their treatment period (Fig. 1a; Supplementary Table 1 online), and all animals developed alloantibody by the onset of rejection (see Supplementary Fig. 2 online). In comparison, when both LFA3-Ig and CTLA4-Ig were combined with sirolimus with or without DST, significantly prolonged survival was seen compared to all other groups. These animals remained alloantibody-free while receiving both LFA3-Ig and CTLA4-Ig (see Supplementary Fig. 2 online) and 5/8 animals receiving the combination therapy remained rejection-free beyond the period of treatment (> 90 days). Two animals were killed with normally functioning, rejection-free, allografts at days 168 and 243 after developing alloantibody. Thus, LFA3-Ig was clearly additive and potentially synergistic to this CoB-based regimen.

We used polychromatic flow cytometry (PFC) to evaluate LFA3-Ig's influence on naive and  $T_M$ -cell subsets (11) (Fig. 1b, Supplementary Methods and Supplementary Fig. 3 online). While there was no gross lymphopenia, there was a general trend toward decreased absolute T-cell numbers in LFA3-Ig treated animals, with a greater reduction in  $CD8^+$  cells and an increase in the  $CD4/CD8$  ratio that reversed following the withdrawal of LFA3-Ig. This modest decrease in lymphocyte counts could be attributed to a selective depletion in  $T_M$ -cells without alteration in the numbers of naive T-cells. In particular, the greatest depletion was seen within the T effector ( $T_{EM}$ ;  $CD28^-CD95^+$ ) subset of  $CD4^+$  and  $CD8^+$  T-cells (Fig. 1c).  $T_{EM}$  counts were markedly ( $p=0.007$ ) reduced after 3 weeks of LFA3-Ig therapy. At the time of rejection or sacrifice,  $T_{EM}$  counts in LFA3-Ig treated animals had returned to normal, suggesting that more prolonged treatment would facilitate improved survival. This reduction in  $T_{EM}$ -cells was not observed in non-LFA3-Ig treated animals. Interestingly, dual evaluation of peripheral blood T-cells from naïve animals with regard to CD2 and CD3 expression indicated that  $CD28^+$  T-cells were overwhelmingly  $CD2^{lo}CD3^{hi}$  while  $CD28^-$  T-cells were conversely  $CD2^{hi}CD3^{lo}$ , providing an explanation for the  $T_{EM}$ -selective effects of LFA3-Ig (Fig. 1d and 1e).

All animals at one month showed modest lymphocytic infiltrates in surveillance biopsies studied using multi-color immunohistochemistry (see Supplementary Methods online). Interestingly, while T-cell infiltrates were present in all animals, animals not receiving LFA3-Ig tended to show a more heterogeneous infiltrate including monocytes in addition to T-cells. All animals reaching endpoint criteria showed allograft rejection on histological analysis following necropsy. However, two animals killed with normally functioning,

rejection-free allografts contained focal perivascular aggregates of T- and B-cells with minimal or no monocytes (Fig. 1f and Supplementary Fig. 4 online), without tubulitis or vasculitis. The paucity of monocytes in these infiltrates is consistent with previously reported results of allografts maintaining normal function under CoB-based therapies, in that pure T-cell aggregates behaved in a benign fashion while those with monocytes were associated with functional impairment (12).

To investigate LFA3-Ig's effect on alloreactive  $T_M$ -cells, we performed mixed lymphocyte cultures (MLCs) specifically evaluating the relationship between the alloresponsiveness of  $CD4^+$  and  $CD8^+$  T-cells and their surface expression of CD2. Responder lymphocytes were labeled with CFSE to enable the identification of responding cells by generation of cell division (Fig. 2a; and Supplementary Methods), and each division was individually interrogated for maturation phenotype and CD2 expression. Responding cells progressively increased CD2 expression leaving highly alloresponsive cells markedly decorated with the LFA3-Ig target compared to non-responding cells (Fig. 2b). Similarly, cells that differentiated into cytokine producing cells (IFN- $\gamma$ , TNF- $\alpha$ , and/or IL-2) in response to alloantigen stimulation progressively gained CD2 expression commensurate with their acquisition of cytokine secretion capabilities with the highest CD2 expression seen in those cells with poly-functionality (Fig. 2c), cells previously shown to be more robust and terminally differentiated effectors (13). In keeping with this target pattern, CTLA4-Ig and LFA3-Ig each mediated a dose-dependent inhibition of proliferation for both  $CD4^+$  and  $CD8^+$  T-cells when added to MLCs, and the combination induced an additive reduction in percent cells divided across 3 logs of concentration tested (Fig. 2d and 2e).

These results demonstrate that a combination of LFA3-Ig, CTLA4-Ig, and sirolimus markedly prolongs renal allograft survival and delays the onset of alloantibody formation in primates and that the effect lasts beyond the period of therapy in most animals. All components of the regimen appear to be involved in the regimen's efficacy, as individual agents were ineffective in preventing rejection or antibody formation. The mechanism of LFA3-Ig's salutary effect appears to be related to increasing CD2 density on alloresponsive cells, particularly  $CD28^- T_{EM}$ -cells, cells that are least susceptible to CoB and most alloresponsive. These data are consistent with a model in which the transient elimination of CoB-resistant  $T_M$ -cells fosters an environment that more closely resembles that seen in naïve rodent models. They support the development of a clinically applicable regimen for the prevention of allograft rejection in humans without the use of calcineurin inhibitors, steroids, or gross T-cell depletion.

## Supplementary Material

Refer to Web version on PubMed Central for supplementary material.

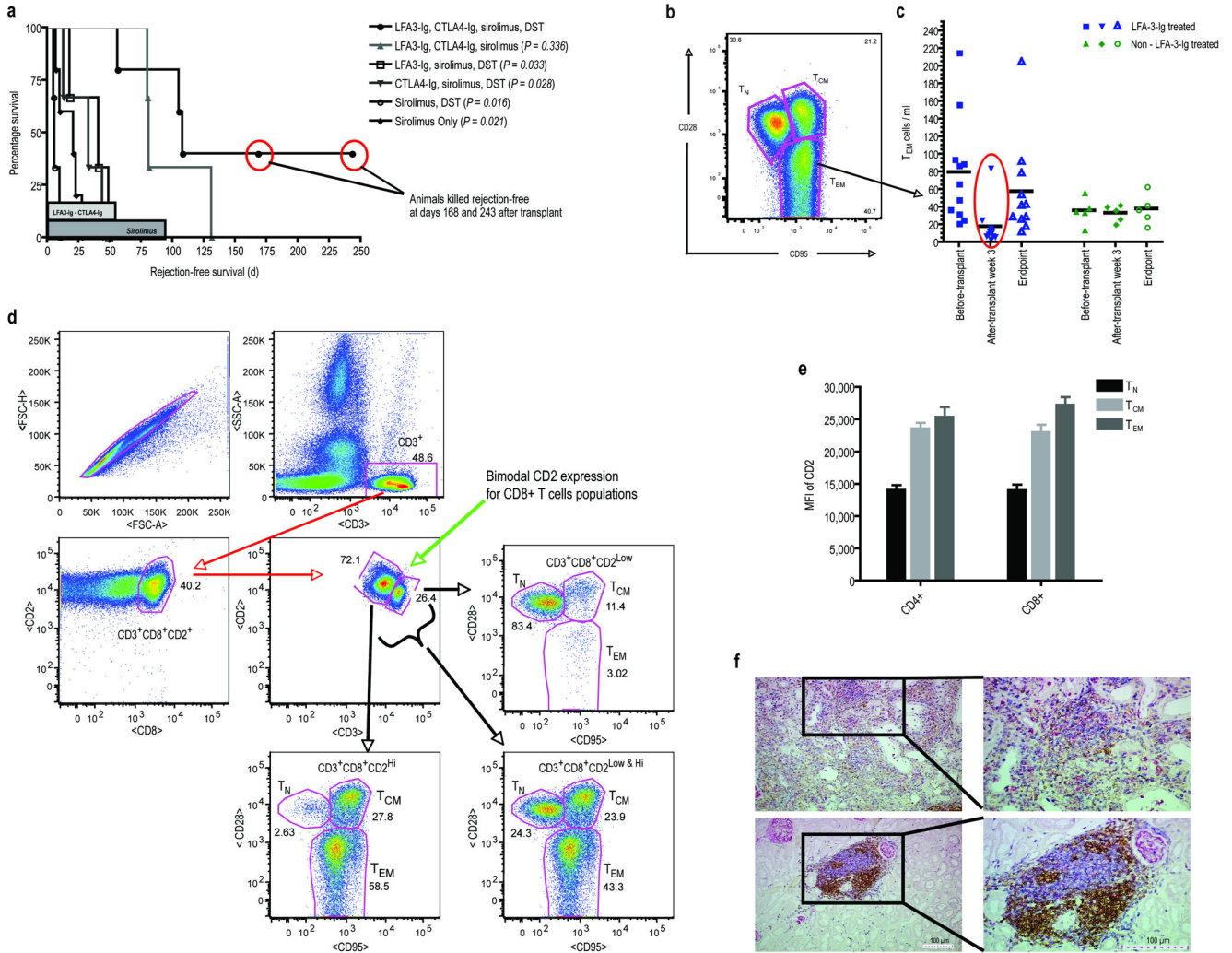
## Acknowledgments

This study was funded in part by the Division of Intramural Research, National Institute of Diabetes, Digestive and Kidney Disease, National Institutes of Health (Z01 DK062007-06). The authors have no conflicting financial interests. Salary support for TAW was provided by the Howard Hughes Medical Institute through the NIH Research Scholars Program. ADK is supported by the National Institutes of Health (1U01AI079223-01A1), the

Georgia Research Alliance, and the McKelvey Foundation. The authors gratefully acknowledge the expert assistance of John Bacher, and the staff of the NIH Veterinary Pathology Department.

## References

1. Meier-Kriesche HU, et al. *Am J Transplant*. 2006; 6:1111–1131. [PubMed: 16613591]
2. Lin H, et al. *J Exp Med*. 1993; 178:1801–1806. [PubMed: 8228826]
3. Li Y, Zheng XX, Li XC, Zand MS, Strom TB. *Transplantation*. 1998; 66:1387–1388. [PubMed: 9846527]
4. Kirk AD, et al. *Imm Rev*. 2003; 196:176–196.
5. Valujskikh A, Li XC. *J Am Soc Nephrol*. 2007; 18:2252–2261. [PubMed: 17634436]
6. Adams AB, et al. *J Clin Invest*. 2003; 111:1887–1895. [PubMed: 12813024]
7. Wu Z, et al. *Nat Med*. 2004; 10:87–92. [PubMed: 14647496]
8. Ortonne JP, Lebwohl M, Em Griffiths C. Alefacept Clinical Study Group. *Eur J Derm*. 2003; 13:117–123.
9. Ellis CN, Krueger GG. Alefacept Clinical Study Group. *N Engl J Med*. 2001; 345:248–255. [PubMed: 11474662]
10. Chamian F, et al. *Proc Natl Acad Sci USA*. 2005; 102:2075–2080. [PubMed: 15671179]
11. Pitcher CJ, et al. *J Immunol*. 2002; 162:29–24. [PubMed: 11751943]
12. Preston EH, et al. *Am J Transplant*. 2005; 5:1032–1041. [PubMed: 15816883]
13. Harari A, et al. *Immunol Rev*. 2006; 211:236–254. [PubMed: 16824132]

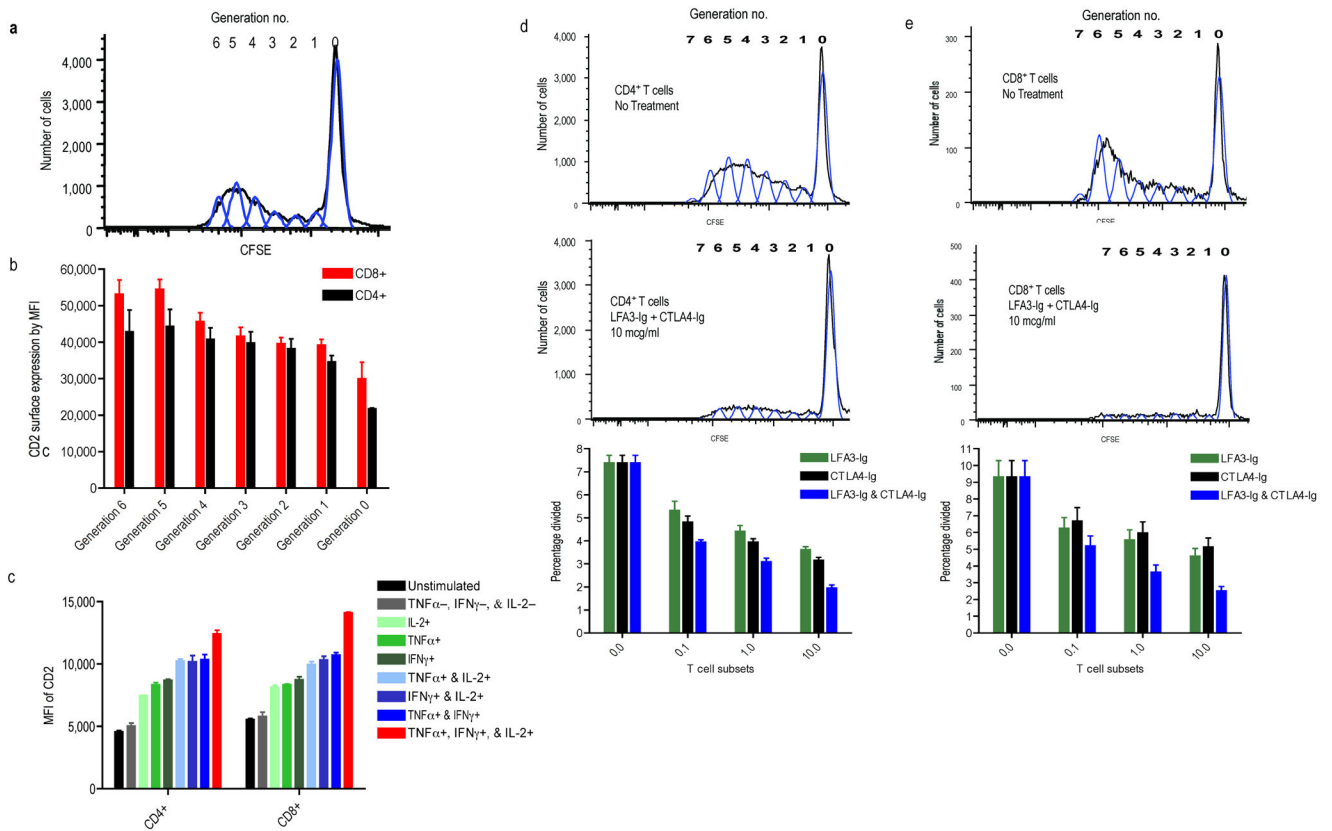


**Figure 1.**

(a.) Rejection-free survival defined as the interval between the time of transplantation and the first allograft rejection event shown in days by treatment group. The duration of therapy is shown in the shaded bars along the x-axis.  $P$  values were determined by Student's  $t$ -test (two-tailed) comparing each individual group versus the treatment group receiving LFA3-Ig, CTLA4-Ig, sirolimus, DST. This group had significantly prolonged rejection-free survival compared to all groups except the group receiving the combined therapy without DST. Similarly, the two groups receiving both LFA3-Ig and CTLA4-Ig, when considered together, had significantly prolonged survival compared to all other groups combined ( $p=0.002$ , two tailed Student's  $t$ -test). The groups did not differ by sirolimus level or donor-directed mixed lymphocyte reactivity (See Supplementary Table 1 online). Two animals in the combined therapy group were killed with normal graft function after developing alloantibody. (b.) Polychromatic flow cytometry (PFC) was used to analyze LFA3-Ig's depletion influence on PBMC T-cell subsets: naïve ( $T_N$ ;  $CD4^+CD28^+CD95^{low/-}$ ,  $\beta 7$  integrin<sup>int</sup> and  $CD8^+CD28^+CD95^{low/-}$ ,  $CD11a^{low}$ ), central memory ( $T_{CM}$ ;  $CD28^+CD95^+$  or  $CD45RA^-CD62L^+$  in both  $CD4^+$  and  $CD8^+$  cells), and effector memory ( $T_{EM}$ ;

CD4<sup>+</sup>CD28<sup>-</sup>CD95<sup>+</sup> or CD45RA<sup>high</sup> and CD8<sup>+</sup>CD28<sup>-</sup>CD95<sup>+</sup> or CD11a<sup>high</sup>). Shown is a representative gate defining the three subsets for T-cells previously gated for CD3. (c.) The influence of LFA3-Ig treatment of peripheral T<sub>EM</sub>-cell count levels is shown for all animals pre-transplant, 3 weeks post-transplant, and at terminal end points. Animals receiving LFA3-Ig are shown to the left in blue, and animals that did not receive LFA3-Ig are shown to the right in green. The mean values for each group are shown as black horizontal bars. T<sub>M</sub>-cells were significantly reduced after 3 weeks of LFA3-Ig therapy with the greatest depletion seen in the T<sub>EM</sub> (CD28<sup>-</sup>CD95<sup>+</sup>) subset of CD4<sup>+</sup> and CD8<sup>+</sup> T-cells (p=0.007, two-tailed Student's t-test comparing pre and post transplant cell counts) without significant alteration in the absolute numbers of naïve T-cells. This was not seen in non-LFA3-Ig treated animals. No significant difference in naïve T-cells was observed between LFA3-Ig and non-LFA3-Ig treated animals at each time point. At the time of rejection or sacrifice, T<sub>EM</sub> counts in LFA3-Ig treated animals had returned to normal. (d.) There is an inverse relationship between the surface expression of CD2 (the target of LFA3-Ig) and CD28 (the relevant receptor blocked with CTLA4-Ig). Shown are results from PFC experiments performed on freshly isolated peripheral blood lymphocytes obtained from untreated animals. T-cells prior to treatment have a bimodal expression of CD2 and CD3, with antigen experienced cells having lower CD3 expression and higher CD2 expression (center panel). Shown is this relationship for CD8<sup>+</sup> T-cells based on PFC plots. The CD3<sup>hi</sup>CD2<sup>lo</sup> cells are predominantly T<sub>N</sub> (upper right) while the CD3<sup>lo</sup>CD2<sup>hi</sup> cells are predominantly T<sub>EM</sub> (lower left). T<sub>CM</sub> cells are less distinctly segregated by these markers. (e.) Summary data from five untreated animals relating the mean fluorescence intensity (MFI) of CD2 to the surface phenotype for both CD4<sup>+</sup> and CD8<sup>+</sup> T-cells. (f.) Renal allograft histological examination of necropsy specimens from a healthy, rejection-free animal with immunohistochemical (IHC) staining for T-cells (blue – CD3<sup>+</sup>), B-cells (brown – CD79<sup>+</sup>), and macrophages (pink/red – Ham-56) at low (left images) and higher (right images) magnification. Despite normal renal allograft function and no clinical signs/symptoms of rejection, multiple focal and highly organized cellular infiltrates were observed (lower panels). Interestingly, the cellular infiltrates were predominately aggregates of T- and B-cells, with minimal or no macrophages. In comparison, examination of rejecting animals using identical IHC staining demonstrated diffuse infiltrates without focal organization displaying greater cellular heterogeneity. Importantly, there were greater numbers of macrophages observed per objective field compared to the infiltrates seen in non-rejecting allografts, which has been shown to be of functional significance. Note the Ham-56 macrophage marker is also present on mesangial cells. As a result, glomeruli will also stain positive (pink) for Ham-56 as seen throughout the histological specimens.



**Figure 2.**

Shown are studies investigating the relationship between CD2 expression and alloresponsiveness in mixed lymphocyte culture (MLC) as measured by proliferation and cytokine production. **(a.)** CFSE-labeled T-cells responding in MLC progressively lose fluorescence intensity by a factor of two permitting alloresponsive cells to be distinguished from non-dividing cells and each generation of division (generation #) to be separately evaluated by PFC. **(b.)** PFC evaluation of each CFSE generation for accessory molecule expression (CD4 or CD8) and CD2, the target of LFA3-Ig demonstrates that each progressive cell division is associated with a concomitant increase in surface CD2 expression, suggesting that the most alloresponsive cells are the most susceptible to LFA3-Ig treatment. **(c.)** Intracellular cytokine staining relating CD2 expression and cytokine secretion (IFN- $\gamma$ , TNF- $\alpha$ , and/or IL-2) produced following allostimulation shows that T-cells with the most developed cytokine production capabilities express the highest density of surface CD2, with poly-functional cells, those expressing IFN- $\gamma$ , TNF- $\alpha$ , and IL-2 (red bars), having the greatest CD2 density. **(d.)** Proliferation of both CD4<sup>+</sup> and **(e.)** CD8<sup>+</sup> T-cells in CFSE MLC is inhibited with CTLA4-Ig and LFA3-Ig, and the combination of both agents is more effective than either agent alone across a 3-log concentration range. Results of MLCs are shown for untreated cells (top), and cells treated with both agents at 10 $\mu$ g/ml (middle) demonstrating that treatment markedly attenuated proliferations. The bottom panels display summary data expressed as percent cells divided during MLC across 4 different concentrations of CTLA4-Ig and/or LFA3-Ig, (0.0, 0.1, 1.0, and 10  $\mu$ g/ml). A dose

dependent decrease in proliferation is seen with the combination therapy having the lowest proliferative capacity at all concentrations tested.

Author Manuscript

Author Manuscript

Author Manuscript

Author Manuscript