

# White-Coat Hypertension Should Not Be Treated in Subjects With Diabetes

MICHAEL BURSZTYN, MD, FAHA<sup>1</sup>  
IDDO Z. BEN-DOV, MD<sup>2</sup>

**B**lood pressure (BP) levels in the doctor's clinic may not always reflect those of daily living, as indicated by 24-h ambulatory or self-monitoring measurements. Simple logic implies that treatment should be guided by the actual BP levels, rather than by imprecise clinic measurements. On average, BP measured in the clinic is higher than out-of-office BP. This difference occurs in a considerable number of patients with white-coat hypertension (WCH). The issue is complicated, since most studies define WCH as an elevated office BP in patients with normal *awake* ambulatory BP. However, the "awake" state may not fully reflect the 24-h BP load. Average 24-h BP, and particularly that during sleep, which is more likely to be higher in subjects with diabetes (1,2), could be elevated in a patient with normal awake BP. The presence of abnormal clinic BP in such a patient discloses true hypertension rather than WCH. Indeed, among 4,121 subjects referred for ambulatory BP monitoring, 4.5% had isolated abnormal sleep BP (>120/70 mmHg) and normal 24-h BP (3). Nevertheless, in this presentation, we assume that the common definition of WCH is elevated clinic readings with normal awake BP.

Assessment of WCH in diabetes is complicated by the fact that normal BP measured at the clinic is defined as <130/80 mmHg (as opposed to 140/90 mmHg in the general population), whereas there are still no accepted thresholds for ambulatory or home-based BP levels.

Characteristics unique to the white-coat response in patients with diabetes,

associated prognostic implications, and the need for treatment are discussed.

## PREVALENCE OF WCH IN DIABETES

— The issue of prevalence is not marginal: we have found that compared with subjects without diabetes who were referred for 24-h ambulatory BP monitoring, those treated for diabetes were less likely to have WCH (and more likely to have masked hypertension) (1). A similar conclusion was arrived at in a recent Brazilian study where masked hypertension was not only more prevalent (4), but also associated with a higher rate of target organ damage (5).

Among a cohort of 3,995 patients referred to our department for ambulatory BP monitoring, 343 were being medically treated for diabetes. They were older, more obese, and had higher BP, both in the clinic and by ambulatory monitoring, despite the increased likelihood of being treated with medications (1). WCH was defined as awake BP below 135/85 mmHg in the presence of elevated clinic BP. Its prevalence was marginally lower among the subjects with diabetes: 8.5 versus 11.4% among those without diabetes (odds ratio [OR] 0.72 [95% CI 0.48–1.06]). For comparison, the OR for normal awake systolic BP among subjects with diabetes (regardless of clinic BP) was lower (0.43 [0.32–0.56]).

Lower prevalence of WCH was also found in a massive multicenter study in Spain, comprising 12,895 treated hypertensive patients, of whom 2,772 had type 2 diabetes. This study had a greater number of subjects and comprised more pa-

tients diagnosed with type 2 diabetes than any other, including most combined studies (6). Lower prevalence of WCH among patients with diabetes (0.58 [0.41–0.83]) was also found in a reanalysis of the data in a recent study from Japan, where 301 of 1,267 subjects had diabetes (2). Conversely, the prevalence of WCH was similar among patients with diabetes and normotensive subjects in a population-based study from Japan, where WCH was diagnosed by home-based BP measurements (7).

Overall, it appears that, in type 2 diabetes, the caveat for diagnosis of hypertension may fail to detect masked hypertension (1), rather than failing to notice WCH. White-coat response to measurement of BP by a physician is accompanied by tachycardia and most likely reflects a sympathetic reaction (8), as recently confirmed (9–11). Lower prevalence of WCH in subjects with type 2 diabetes may be explained by the presence of autonomic neuropathy and thus lower reactivity to clinic stress.

Thus, it appears that when subjects with type 2 diabetes—the "prototype" of high-risk subjects—have a normal BP recorded at the clinic, they are more likely to have home-based, or ambulatory, hypertension. Indeed, white-coat and masked hypertension may, in part, reflect "regression toward the mean," depending on whether high (WCH) or low (masked hypertension) levels are recorded at the clinic (12).

## PROGNOSIS OF WCH IN DIABETES

— Results of studies on the prognosis of WCH are somewhat controversial (9,13–20). Although most studies find it to be benign (18), this is not a universal finding (9,13–17). The results of several studies demonstrated that subjects with WCH have similar characteristics to those of hypertensive patients, including age, BMI, and metabolic and sympathetic abnormalities, compared with normotensive patients (9,10,14–16). This, in part, could be explained by WCH subjects who have a higher (yet normal) ambulatory BP than normotensive patients. An example could be the

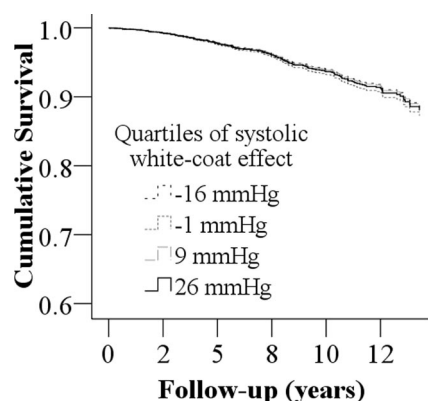
From <sup>1</sup>Internal Medicine, Mount Scopus Campus, Hadassah–Hebrew University Medical Center, Jerusalem, Israel; and <sup>2</sup>Nephrology and Hypertension Services, Hadassah–Hebrew University Medical Center, Jerusalem, Israel.

Corresponding author: Michael Bursztyn, bursz@cc.huji.ac.il.

The publication of this supplement was made possible in part by unrestricted educational grants from Eli Lilly, Hicon Endo-Surgery, Genex Biotechnology, Hoffmann-La Roche, Johnson & Johnson, LifeScan, Medtronic, MSD, Novo Nordisk, Pfizer, sanofi-aventis, and WorldWIDE.

DOI: 10.2337/dc09-S328

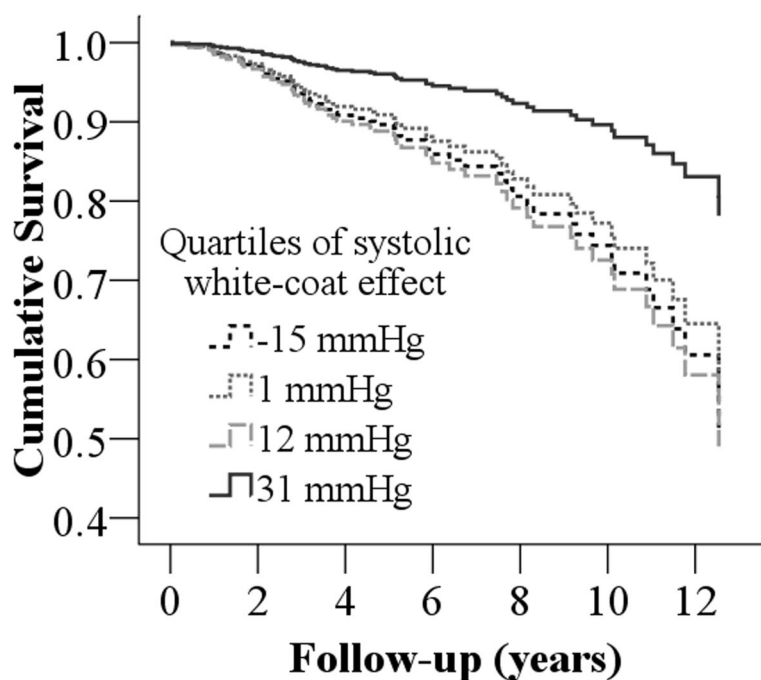
© 2009 by the American Diabetes Association. Readers may use this article as long as the work is properly cited, the use is educational and not for profit, and the work is not altered. See <http://creativecommons.org/licenses/by-nc-nd/3.0/> for details.



**Figure 1**—Survival of patients referred for 24-h ambulatory BP monitoring according to quartiles of the white-coat effect (clinic-awake systolic BP difference) by a Cox proportional hazards model that is adjusted for age, sex, BMI, awake systolic BP, and treatment for hypertension ( $P = 0.86$ ).

population-based PAMELA (Pressioni Arteriose Monitorate E Loro Associazioni) study, where higher ambulatory BP was associated with such abnormalities, as well as with a higher prevalence of diabetes (21). Similar findings appeared in studies of subjects with type 2 diabetes (4,22–24). Even slight BP elevation in high-risk subjects (those with diabetes) may have prognostic implications. Patients with WCH among 2,285 subjects treated for hypertension and referred for 24-h ambulatory BP monitoring at our service had significantly elevated ambulatory BP (although in the normal range), relative to those with controlled BP (20). Accordingly, survival was associated with ambulatory and not manual BP, even after consideration of confounders including diabetes (20). Similar findings were presented in another study (19) and in a recent meta-analysis (18).

The 343 diabetic patients from our cohort of patients referred for ambulatory BP monitoring were older, more obese, and had higher BP both in the clinic and with ambulatory monitoring, despite their greater likelihood of being treated with medications (1). Not surprisingly, their demise was also more likely to occur during follow-up of up to 14 years: their mortality amounted to 27.9/1,000 patient-years, whereas that of subjects without diabetes was almost one-third, at 9.8/1,000 patient-years ( $P < 0.0001$ ). When we analyzed survival of patients referred for ambulatory BP measurements by a Cox proportional

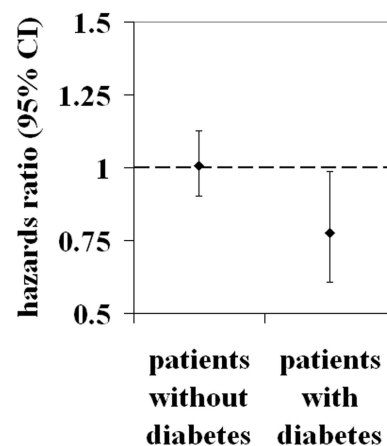


**Figure 2**—Survival of patients treated for diabetes who were referred for 24-h ambulatory BP monitoring, according to quartiles of the white-coat effect (clinic-awake systolic BP difference) by a Cox proportional hazards model that is adjusted for age, sex, BMI, awake systolic BP, and treatment for hypertension ( $P < 0.04$ ).

hazard model (after adjustment for age, sex, BMI, awake systolic BP, and treatment for hypertension), there was no influence by quartiles of the white-coat effect in subjects without diabetes (Fig. 1). However, a similar analysis in individuals with diabetes found a significant ( $P < 0.05$ ) interaction with systolic white-coat effect quartiles and a substantially improved survival rate in patients with diabetes in the highest systolic white-coat quartile (Fig. 2). Furthermore, in an analysis of the white-coat effect as a continuous variable, with adjustments as above, an increase of 1 SD of the systolic white-coat effect was associated with a significant reduction in the hazard ratio for mortality only in subjects with diabetes (Fig. 3). The conclusion from these results is that taking into account confounding variables (older age, higher BMI, higher ambulatory BP, and their greater propensity to be medically treated for hypertension), diabetic patients with white-coat BP elevation tend to have improved survival. This conclusion is also supported by the findings in Japanese patients with diabetes, where cardiovascular complications were significantly less common in WCH (25).

#### PERSPECTIVE OF ANTIHYPERTENSIVE THERAPY FOR OFFICE-MEASURED BP IN SUBJECTS WITH DIABETES AND WCH

Treatment of WCH in general is not believed to be beneficial (9,26–28). Decades ago, it was shown that casual BP, comprising a supplemental component that is rather similar to the



**Figure 3**—Mortality hazard ratios associated with 1-SD increase in the white-coat effect (clinic-awake systolic BP difference) adjusted for age, sex, BMI, awake systolic BP, and treatment for hypertension ( $P < 0.05$ ).

white-coat effect (29), does not affect prognosis, whereas basal relaxed BP (similar to sleep BP) soundly predicts outcome (30).

Moreover, treating WCH may produce excessive lowering of the ambulatory BP (28). In the International Verapamil SR-trandolapril Study (INVEST) of 22,576 hypertensive coronary patients, it was found that lowering diastolic BP to <83 mmHg was associated with excess mortality and coronary events. One-third of subjects with clinic systolic BP >140 mmHg (some of whom probably had WCH), and one-third of those with diastolic BP <80 mmHg (prone to consequences of such excessive reduction), had type 2 diabetes (31). Thus, recommendation for treatment of WCH may come at a price of harming patients with diabetes and coronary disease, a common comorbidity, especially among the older group that comprises a substantial section of subjects with type 2 diabetes.

Taking all the aforementioned into consideration, it is unjustified, or at least premature, to treat WCH in diabetes with antihypertensive therapy. Defining diabetes-specific normal ambulatory BP thresholds will facilitate management of the problem in clinical practice.

**Acknowledgments**—No potential conflicts of interest relevant to this article were reported.

## References

1. Ben-Dov IZ, Ben-Ishay D, Mekler J, Ben-Arie L, Bursztyn M. Increased prevalence of masked blood pressure elevations in treated diabetic subjects. *Arch Intern Med* 2007;167:2139–2142
2. Eguchi K, Pickering TG, Hoshide S, Ishikawa J, Ishikawa S, Schwartz JE, Shimada K, Kario K. Ambulatory blood pressure is a better marker than clinic blood pressure in predicting cardiovascular events in patients with/without type 2 diabetes. *Am J Hypertens* 2008;21:443–450
3. Ben-Dov IZ, Ben-Arie L, Mekler J, Bursztyn M. Normal ambulatory blood pressure: a clinical-practice-based analysis of recent American Heart Association recommendations. *Am J Med* 2006;119:69.e13–69.e18
4. Leitão CB, Canani LH, Silveiro SP, Gross JL. Ambulatory blood pressure monitoring and type 2 diabetes mellitus. *Arq Bras Cardiol* 2007;89:315–321
5. Leitão CB, Canani LH, Kramer CK, Boza JC, Pinotti AF, Gross JL. Masked hypertension, urinary albumin excretion rate, and echocardiographic parameters in

- putatively normotensive type 2 diabetic patients. *Diabetes Care* 2007;30:1255–1260
6. Banegas JR, Segura J, Sobrino J, Rodríguez-Artalejo F, de la Sierra A, de la Cruz JJ, Gorostidi M, Sarria A, Ruilope LM. Spanish Society of Hypertension Ambulatory Blood Pressure Monitoring Registry Investigators: Effectiveness of blood pressure control outside the medical setting. *Hypertension* 2007;49:62–68
7. Hara A, Ohkubo T, Kikuya M, Shintani Y, Obara T, Metoki H, Inoue R, Asayama K, Hashimoto T, Harasawa T, Aono Y, Otani H, Tanaka K, Hashimoto J, Totsumoto K, Hoshi H, Satoh H, Imai Y. Detection of carotid atherosclerosis in individuals with masked hypertension and white-coat hypertension by self-measured blood pressure at home: the Ohasama study. *J Hypertens* 2007;25:321–327
8. Mancia G, Bertinieri G, Grassi G, Parati G, Pomidossi G, Ferrari A, Gregorini L, Zanchetti A. Effects of blood-pressure measurement by the doctor on patient's blood pressure and heart rate. *Lancet* 1983;2:695–698
9. Smith PA, Graham LN, Mackintosh AF, Stoker JB, Mary DA. Sympathetic neural mechanisms in white-coat hypertension. *J Am Coll Cardiol* 2002;40:126–132
10. Grassi G, Seravalle G, Trevano FQ, Dell'oro R, Bolla G, Cuspidi C, Arenare F, Mancia G. Neurogenic abnormalities in masked hypertension. *Hypertension* 2007;50:537–542
11. Fagard RH, Stolarz K, Kuznetsova T, Seidlerova J, Tikhonoff V, Grodzicki T, Nikitin Y, Filipovsky J, Peleska J, Casiglia E, Thijs L, Staessen JA, Kawecka-Jaszcz K. Sympathetic activity, assessed by power spectral analysis of heart rate variability, in white-coat, masked and sustained hypertension versus true normotension. *J Hypertens* 2007;25:2280–2285
12. Ben-Dov IZ, Ben-Arie L, Mekler J, Bursztyn M. In clinical practice, masked hypertension is as common as isolated clinic hypertension: predominance of younger men. *Am J Hypertens* 2005;18:589–593
13. Pickering TG, Shimbo D, Haas D. Ambulatory blood-pressure monitoring. *N Engl J Med* 2006;354:2368–2374
14. Verdecchia P, Reboldi GP, Angeli F, Schillaci G, Schwartz JE, Pickering TG, Imai Y, Ohkubo T, Kario K. Short- and long-term incidence of stroke in white-coat hypertension. *Hypertension* 2005;45:203–208
15. Gustavsen PH, Hoegholm A, Bang LE, Kristensen KS. White coat hypertension is a cardiovascular risk factor: a 10-year follow-up study. *J Hum Hypertens* 2003;17:811–817
16. Mulè G, Nardi E, Cottone S, Cusimano P, Incalcaterra F, Palermo A, Giandalia M, Geraci C, Buscemi S, Cerasola G. Metabolic syndrome in subjects with white-coat hypertension: impact on left

- ventricular structure and function. *J Hum Hypertens* 2007;21:854–860
17. Flores L, Giménez M, Esmatjes E. Prognostic significance of the white coat hypertension in patients with type 1 diabetes mellitus. *Diabetes Res Clin Pract* 2006;74:21–25
18. Fagard RH, Cornelissen VA. Incidence of cardiovascular events in white-coat, masked and sustained hypertension versus true normotension: a meta-analysis. *J Hypertens* 2007;25:2193–2198
19. Pierdomenico SD, Lapenna D, Di Mascio R, Cuccurullo F. Short- and long-term risk of cardiovascular events in white-coat hypertension. *J Hum Hypertens* 2008;22:408–414
20. Ben-Dov IZ, Kark JD, Mekler J, Shaked E, Bursztyn M. The white coat phenomenon is benign in referred treated patients: a 14-year ambulatory blood pressure mortality study. *J Hypertens* 2008;26:699–705
21. Mancia G, Facchetti R, Bombelli M, Friz HP, Grassi G, Giannattasio C, Sega R. Relationship of office, home, and ambulatory blood pressure to blood glucose and lipid variables in the PAMELA population. *Hypertension* 2005;45:1072–1077
22. Flores L, Recasens M, Gomis R, Esmatjes E. White coat hypertension in type 1 diabetic patients without nephropathy. *Am J Hypertens* 2000;13:560–563
23. Holl RW, Pavlovic M, Heinze E, Thon A. Circadian blood pressure during the early course of type 1 diabetes: analysis of 1,011 ambulatory blood pressure recordings in 354 adolescents and young adults. *Diabetes Care* 1999;22:1151–1157
24. Nielsen FS, Gaede P, Vedel P, Pedersen O, Parving HH. White coat hypertension in NIDDM patients with and without incipient and overt diabetic nephropathy. *Diabetes Care* 1997;20:859–863
25. Eguchi K, Hoshide S, Ishikawa J, Ishikawa S, Pickering TG, Gerin W, Ogedegbe G, Schwartz JE, Shimada K, Kario K. Cardiovascular prognosis of sustained and white-coat hypertension in patients with type 2 diabetes mellitus. *Blood Press Monit* 2008;13:15–20
26. Pickering TG, Levenstein M, Walmsley P. Differential effects of doxazosin on clinic and ambulatory pressure according to age, gender, and presence of white coat hypertension: results of the HALT Study. *Am J Hypertens* 1994;7:848–852
27. Fagard RH, Staessen JA, Thijs L, Gasowski J, Bulpitt CJ, Clement D, de Leeuw PW, Dobovisek J, Jääskivi M, Leonetti G, O'Brien E, Palatini P, Parati G, Rodicio JL, Vanhanen H, Webster J. Response to antihypertensive therapy in older patients with sustained and nonsustained systolic hypertension: Systolic Hypertension in Europe (Syst-Eur) Trial Investigators. *Circulation* 2000;102:1139–1144

28. Waeber B, Scherrer U, Petrillo A, Bidiville J, Nussberger J, Waeber G, Hofstetter JR, Brunner HR. Are some hypertensive patients overtreated? A prospective study of ambulatory blood pressure recording. *Lancet* 1987;2:732-734
29. Alam GM, Smirk FH. Casual and basal blood pressures II: in essential hypertension. *Br Heart J* 1943;5:156-160
30. Smirk FH, Veale AM, Alstad KS. Basal and supplemental blood pressures in relationship to life expectancy and hypertension symptomatology. *NZ Med J* 1959;58:711-735
31. Messerli FH, Mancia G, Conti CR, Hewkin AC, Kupfer S, Champion A, Kolloch R, Benetos A, Pepine CJ. Dogma disputed: can aggressively lowering blood pressure in hypertensive patients with coronary artery disease be dangerous? *Ann Intern Med* 2006;144:884-893