

A new species of *Allodaposuchus* (Eusuchia, Crocodylia) from the Maastrichtian (Late Cretaceous) of Spain: phylogenetic and paleobiological implications

Alejandro Blanco¹, Josep Fortuny¹, Alba Vicente², Àngel H. Luján¹, Jordi Alexis García-Marçà¹ and Albert G. Sellés¹

¹ Institut Català de Paleontologia Miquel Crusafont, Universitat Autònoma de Barcelona, Sabadell, Catalonia, Spain

² Departament d'Estratigrafia, Paleontologia i Geociències marines, Facultat de Geologia, Universitat de Barcelona, Carrer de Martí i Franquès s/n, Barcelona, Catalonia, Spain

ABSTRACT

Background. The Late Cretaceous is a keystone period to understand the origin and early radiation of Crocodylia, the group containing all extant lineages of crocodylians. Among the taxa described from the latest Cretaceous of Europe, the genus *Allodaposuchus* is one of the most common but also one of the most controversial. However, because of its fragmentary record, several issues regarding its phylogenetic emplacement and its ecology remain unsolved or unknown. The discovery of a single specimen attributed to *Allodaposuchus*, represented by both cranial and postcranial remains, from the Casa Fabà site (Trempe Basin, NE Spain) in the lower red unit of the Trempe Fm. (early Maastrichtian, Late Cretaceous) offers a unique opportunity to deepen in the phylogenetic relationships of the group and its ecological features.

Methods. The specimen is described in detail, and CT scan of the skull is performed in order to study the endocranial morphology as well as paratympanic sinuses configuration. In addition, myological and phylogenetic analyses are also carried out on the specimen for to shed light in ecological and phylogenetic issues, respectively.

Results. The specimen described herein represents a new species, *Allodaposuchus hulki* sp. nov., closely related to the Romanian *A. precedens*. The CT scan of the skull revealed an unexpected paratympanic sinuses configuration. *Allosaposuchus hulki* exhibits an “anterodorsal tympanic sinus” not observed in any other extant or extinct crocodylian. The caudal tympanic recesses are extremely enlarged, and the expanded quadratic sinus seems to be connected to the middle-ear channel. Phylogenetic analyses confirm the emplacement of the informal taxonomic group ‘Allodaposuchia’ at the base of Crocodylia, being considered the sister group of *Borealosuchus* and Planocraniidae.

Discussion. Although this is a preliminary hypothesis, the unique paratympanic configuration displayed by *A. hulki* suggests that it could possess a high-specialized auditory system. Further, the large cranial cavities could help to reduce the weight of the cranium. Concerning the postcranial skeleton, *Allodaposuchus hulki* shows massive and robust vertebrae and forelimb bones, suggesting it could have a bulky

Submitted 20 March 2015
Accepted 20 July 2015
Published 13 August 2015

Corresponding author
Albert G. Sellés,
albert.garcia@icp.cat

Academic editor
Jérémy Anquetin

Additional Information and
Declarations can be found on
page 31

DOI 10.7717/peerj.1171

© Copyright
2015 Blanco et al.

Distributed under
Creative Commons CC-BY 4.0

OPEN ACCESS

body. The myological study performed on the anterior limb elements supports this interpretation. In addition, several bone and muscular features seem to point at a semi-erected position of the forelimbs during terrestrial locomotion. Taking all the above results into consideration, it seems plausible to suggest that *A. hulki* could conduct large incursions out of the water and have a semi-terrestrial lifestyle.

Subjects Animal Behavior, Paleontology, Taxonomy, Zoology

Keywords Crocodylia, Endocranial morphology, Locomotion, *Allodaposuchus*, Paleoecology, Late Cretaceous

INTRODUCTION

The Late Cretaceous is a crucial period for understanding the rise and radiation of Crocodylia. At this time, the three main lineages of modern crocodylians made their appearance, and started their dominance upon other crocodylian faunas ([Puértolas, Canudo & Cruzado-Caballero, 2011](#)). Thus, any new find regarding the Eusuchia record is worthwhile because it provides new information to the puzzling origin of modern crocodylians.

In this way, the fossil record of Late Cretaceous crocodylomorphs from Europe offers an exceptional opportunity to approach such questions, because it contains both basal Eusuchians and members of all groups involved in the radiation of Crocodylia. In the uppermost Cretaceous strata of SW Europe, basal Eusuchia are represented by the hylaeochampsids *Iharkutosuchus*, [Ösi, Clarck & Weishampel, 2007](#), *Acynodon* [Buscalioni, Ortega & Vasse, 1997](#), and *Musturzabalsuchus* [Buscalioni, Ortega & Vasse, 1997](#) (see also [Narváez et al., 2014](#)). In turn, the clade Alligatoroidea is represented by the genera *Massaliasuchus* [Martin & Buffetaut, 2008](#), whereas *Thoracosaurus* [Leidy, 1852](#) is included within Gavialoidea (see [Laurent, Buffetaut & Le Loeuff, 2000](#)), and *Arenysuchus* [Puértolas, Canudo & Cruzado-Caballero, 2011](#) is considered a basal crocodyloid.

Allodaposuchus [Nopcsa, 1928](#) was one of the most common taxa during the latest Cretaceous of Europe, but is also considered one of the most controversial. Mainly represented by fragmentary skull remains, this genus currently comprises three different species (*Allodaposuchus precedens* [Nopcsa, 1928](#), *Allodaposuchus subjuniperus* [Puértolas-Pascual, Canudo & Moreno-Azanza, 2014](#), and *Allodaposuchus palustris* [Blanco et al., 2014](#)) reported from Spain ([Buscalioni et al., 2001](#); [Blanco et al., 2014](#); [Puértolas-Pascual, Canudo & Moreno-Azanza, 2014](#)), France ([Martin, 2010](#)), and Romania ([Nopcsa, 1928](#); [Delfino et al., 2008](#)). From a phylogenetic point of view, *Allodaposuchus* has been considered for a long time to be a sister taxon of the family Hylaeochampsidae (see [Buscalioni et al., 2001](#); [Delfino et al., 2008](#); [Puértolas-Pascual, Canudo & Moreno-Azanza, 2014](#)), but has also been included within Alligatoroidea ([Martin, 2010](#)) or more recently treated as a basal crocodylian ([Blanco et al., 2014](#)).

In addition, until the discovery of *A. palustris* ([Blanco et al., 2014](#)), the features of the postcranial elements of this genus were never studied in detail. The recovery of new

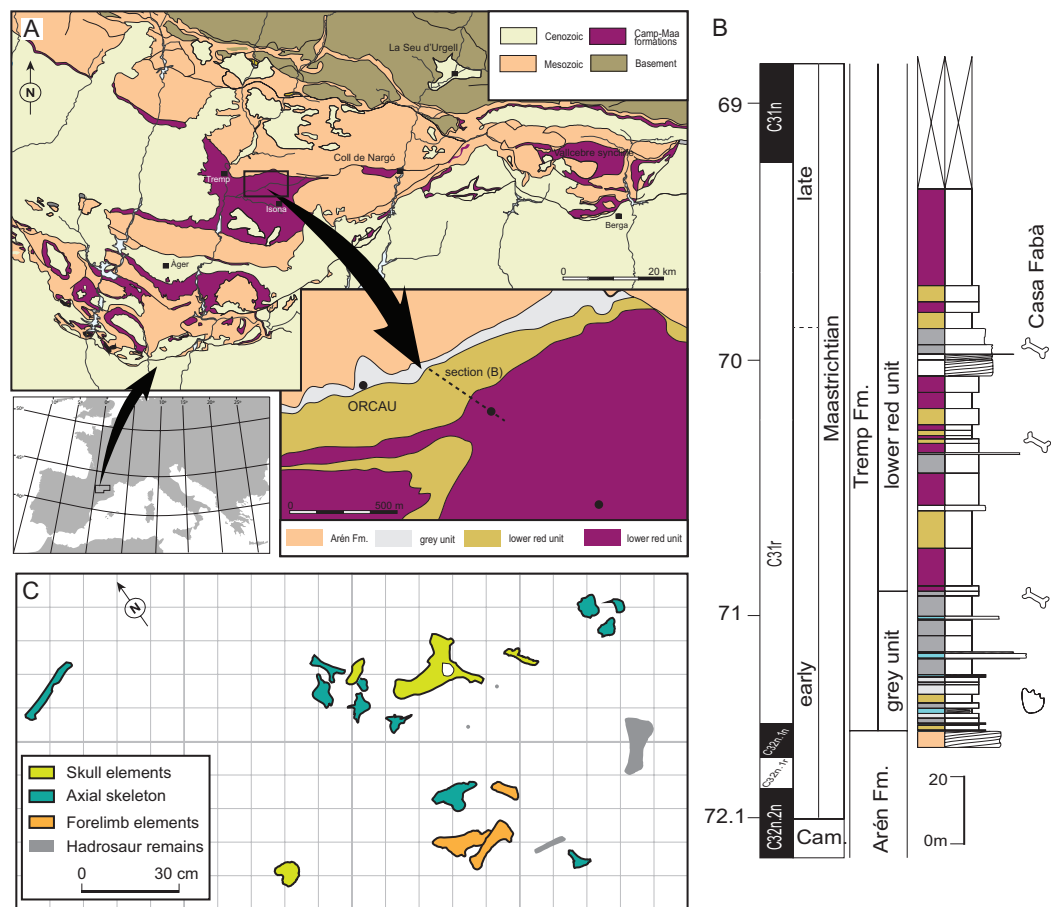


Figure 1 Geographical and geological location of the Casa Fabà site. (A) Geological map of the Tresp Basin (modified from López-Martínez & Vicens, 2012); (B) stratigraphical section performed near the Casa Fabà site (modified from Riera et al., 2009); (C) mapping of the crocodylian bones at the Casa Fabà locality.

cranial and abundant postcranial material ascribed to *Allodaposuchus* from Casa Fabà site (Tresp Basin Southern Pyrenees; Fig. 1), not only sheds light on the anatomical characteristics of this genus, but also provides new clues for its systematic placement and paleobiological traits.

GEOLOGICAL SETTING

The Casa Fabà locality is one of the dozens of Late Cretaceous continental fossil sites located within the Tresp Basin (Southern Pyrenees, Catalonia; Riera et al., 2009). Discovered by Ana María Bravo and Rodrigo Gaete in 2001, the Casa Fabà site is located about 500 m east of the village of Orcau (Pallars Jussà, Catalonia, Spain), in a ravine area known as Les Olives (Fig. 1A). At the end of the Cretaceous, the southern Pyrenean region (NE Iberian Peninsula) consisted of an elongated E-W foreland trough connected to the Atlantic Ocean. In this basin, sedimentation occurred in marine settings up to the Campanian-Maastrichtian boundary. Since then, the sedimentary environment gradually evolved to more continental conditions. As a result of an uplift of successive

thrust-sheets involved in the formation of the Pyrenean range ([Muñoz, Martínez & Vergés, 1986](#); [Puigdefàbregas & Souquet, 1986](#)), four synclines can now be distinguished from the east to the west: the Vallcebre syncline, the Coll de Nargó syncline and the Tremp and Àger synclines.

In the Tremp syncline, the uppermost Cretaceous non-marine deposits have received diverse terminology (see [Gaete et al., 2009](#) for a review). In the present study, we refer to the transition to fully continental materials deposited from the early Maastrichtian to the Thanetian as the Tremp Formation. This formation was divided into four lithological units by [Rosell, Linares & Llompart \(2001\)](#), which are from the base to the top: (1) a transitional ‘grey unit’ (marls, coals, limestones, and sandstones), (2) a fluvial ‘lower red unit’ (mudstones, sandstones, oncoids, and paleosols), (3) the lacustrine ‘Vallcebre limestone’ and laterally equivalent strata, and (4) a fluvial ‘upper red unit’ (mudstones, sandstones, conglomerates and limestones).

Although the Casa Fabà site is mostly covered by abundant vegetation, the outcrop consists of a surface of about 4 m² of a sandstone layer with carbonate matrix inter-bedded between grey marl strata. These sediments are characteristic of the ‘lower red unit’. The occurrence of the charophyte *Microchara punctata* in those marl deposits would indicate a Maastrichtian age according to recent results of [Vicente et al. \(2015\)](#). These authors described a local *Microchara punctata* biozone ranging from the middle part of chron C31r to the lower part of chron C30n in the Vallcebre Basin. These results concur with the stratigraphic and biostratigraphic data of the site, which indicate an early Maastrichtian age, within the C31r chron ([Riera et al., 2009](#); [Díez-Canseco et al., 2014](#)).

MATERIAL AND METHODS

Material

The recovered material was found in a 2 m²-area ([Fig. 1C](#)) including both cranial and postcranial elements ([Figs. 2–6](#)). Because no duplication of bones existed, and bones are connected or coherent in size, we consider the specimen to be a single individual. The skull is represented by the left premaxilla, a fragment of the right dentary, the right jugal and quadratojugal, most of the skull-table, and a damaged fragment of the jaw. The postcranial skeleton is also preserved and includes a right scapula, a fragmentary right humerus, a complete right ulna, a right dorsal rib, a proximal part of an indeterminate rib, an anterior dorsal vertebra and three lumbar vertebrae.

The holotype of *Allodaposuchus palustris* ([Blanco et al., 2014](#)) and several extant crocodile skeletons were used as material of comparison, including one specimen of *Crocodylus niloticus* [Laurenti, 1768](#) (MZB2003-1423), two of *Alligator mississippiensis* [Daudin, 1802](#) (MZB2006-0613, MZB92-0231) and one *Osteolaemus tetraspis* [Cope, 1861](#) (MZB2006-0039). In addition, we gathered both cranial and postcranial information from the literature about extant and extinct crocodylomorphs: *Crocodylus acutus* [Cuvier, 1807](#) (see [Mook, 1921](#)), *Sebecus icaeorhinus* [Simpson, 1937](#) (see [Pol et al., 2012](#)), *Allodaposuchus precedens* ([Buscalioni et al., 2001](#); [Delfino et al., 2008](#)) and *Allodaposuchus subjuniperus* ([Puértolas-Pascual, Canudo & Moreno-Azanza, 2014](#)).

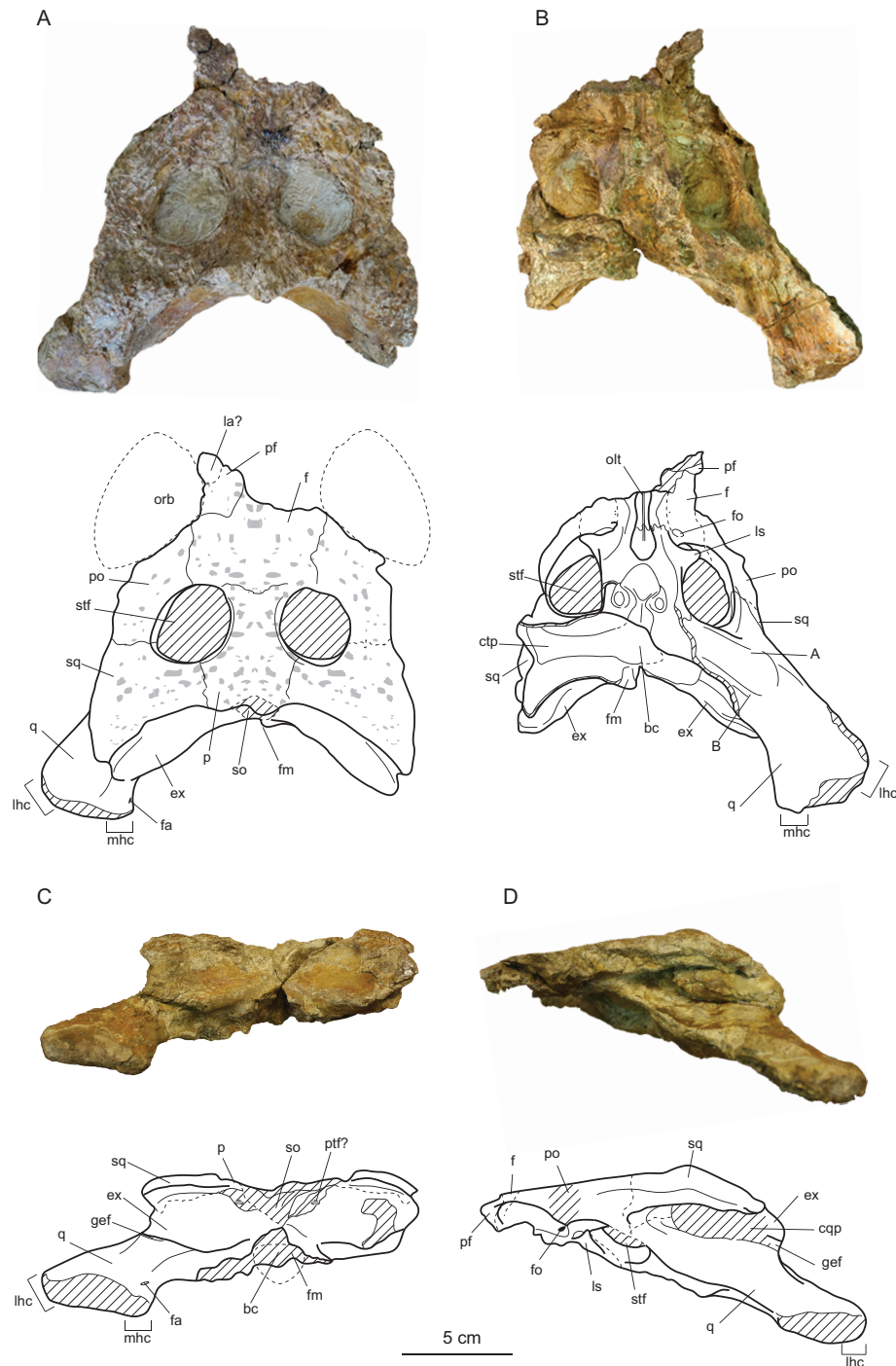


Figure 2 Skull of *Allodaposuchus hulki* sp. nov. (MCD5139) and interpretative diagrams in (A) dorsal, (B) ventral, (C) caudal, and (D) left lateral view. Abbreviations: bc, basicranium; ctp, *cavum tympanicum proprium*; cqp, cranioquadrate passage; ex, exoccipital; f, frontal; fa, *foramen aëreum*; fm, *foramen magnum*; fo, foramen; gef, groove for ear flap; la, lacrimal; lhc, lateral hemicondyle; ls, laterosphenoid; mhch, medial hemicondyle; olt, olfactory track; orb, orbit; p, parietal; pf, prefrontal; po, postorbital; ptf, posttemporal fenestrae; q, quadrate; so, supraoccipital; sq, squamosal; stf, supratemporal fenestra. A and B are muscle scars on the quadrate.

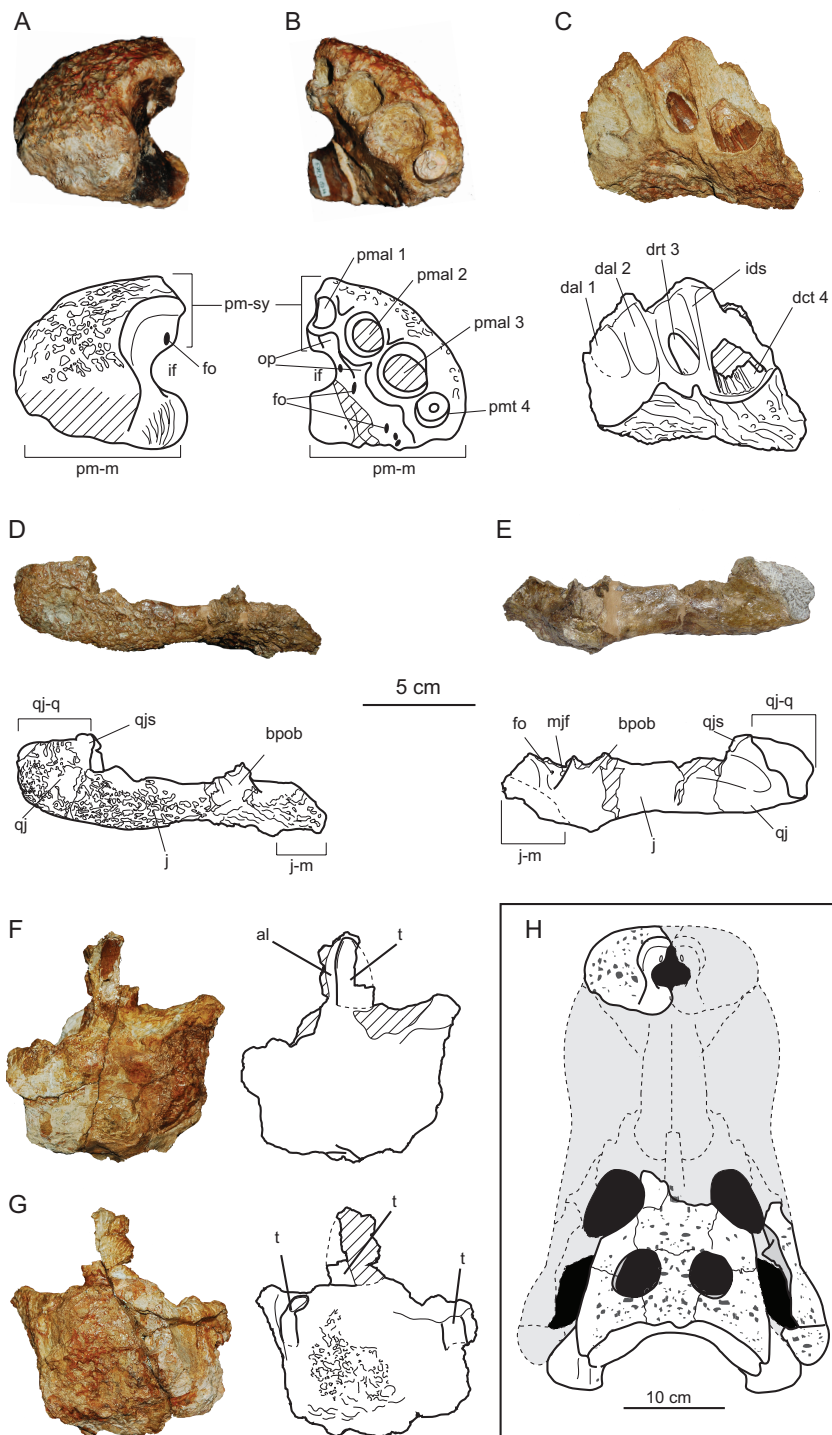


Figure 3 Cranio-mandibular elements of *Allodaposuchus hulki* and interpretative diagrams. Left premaxilla (MCD4763) in (A) dorsal, and (B) ventral view. Right dentary fragment (MCD5134) in (C) labial view. Right pair jugal-quadratojugal (MCD5129) in (D) dorsolateral and (E) ventromedial view. Indeterminate jaw fragment (MCD4758a) in (F) labial and (G) mesial view. (continued on next page...)

Figure 3 (...continued)

Reconstruction of the skull of *Allodaposuchus hulki* (H). Abbreviation: al, alveoli; bpob, base of the postorbital bar; dal, dentary alveolus; dct, dentary caniniform tooth; drt, dentary replacement tooth; fo, foramen; ids, interdental septum; if, incisive foramen; j, jugal; j-m, jugal-maxilla suture; mjf, medial jugal foramen; op, occlusion pits; pmal, premaxillary alveoli; pm-m, premaxilla-maxilla suture; pmt, premaxillary tooth; pm-sy, premaxilla symphysis; qj, quadratojugal; qj-q, quadratojugal-quadrato suture; qjs, quadratojugas spine; t, tooth.

Anatomical nomenclature

The description of the cranial osteology of the new material follows the terminology used in those works concerning the genus *Allodaposuchus* ([Buscalioni et al., 2001](#); [Delfino et al., 2008](#); [Blanco et al., 2014](#); [Puértolas-Pascual, Canudo & Moreno-Azanza, 2014](#)), whereas postcranial elements are described following [Mook \(1921\)](#) and [Brochu \(2011\)](#). In addition, the terminology used to describe appendicular myological features is according to [Meers \(2003\)](#).

Phylogenetic analyses

Phylogenetic relationships of the specimen from Casa Fabà were explored using the dataset of [Brochu \(2011\)](#). However modifications in some operational taxonomic units (OTUs) and characters were carried out (see [Supplemental Information S1](#)).

The entire dataset resulted in 86 OTUs coded for a total of 181 craniodental and postcranial characters (see [Supplemental Information S2](#)). The taxon *Bernissartia fagesii* [Dollo, 1883](#) was used as outgroup. The dataset was analysed with TNT v1.1 (Willi Hennig Society Edition, [Goloboff, Farris & Nixon, 2008](#)). Tree-space was explored using a heuristic search algorithm (traditional search method) with tree-bisection-reconnection branch swapping and 1,000 random addition replicates holding 10 most parsimonious trees for each replicate. All characters were equally weighted and multistate characters were unordered. Bremer supports and bootstrap frequencies (1,000 bootstrap replicates searched) were used to assess the robustness of the nodes.

Inner structural exploration

A Computed Tomography scanner (CT-scan) was used to explore the morphology and the inner structure of the cranial elements. The remains were scanned by multi-detector computer tomography (Sensation 16; Siemens) at Hospital Universitari Mútua de Terrassa (Terrassa, Spain). The material was scanned at 140 kV and 300 mA with an output of 512 × 512 pixels per slice, with an interslice space of 0.3 mm obtaining a pixel size of 0.586 mm and processed with the Avizo 7.0 software (FEI VSG Company). This process allows the recognition of inner cranial structures.

Nomenclatural acts

The electronic version of this article in Portable Document Format (PDF) will represent a published work according to the International Commission on Zoological Nomenclature (ICZN), and hence the new names contained in the electronic version are effectively published under that Code from the electronic edition alone. This published work

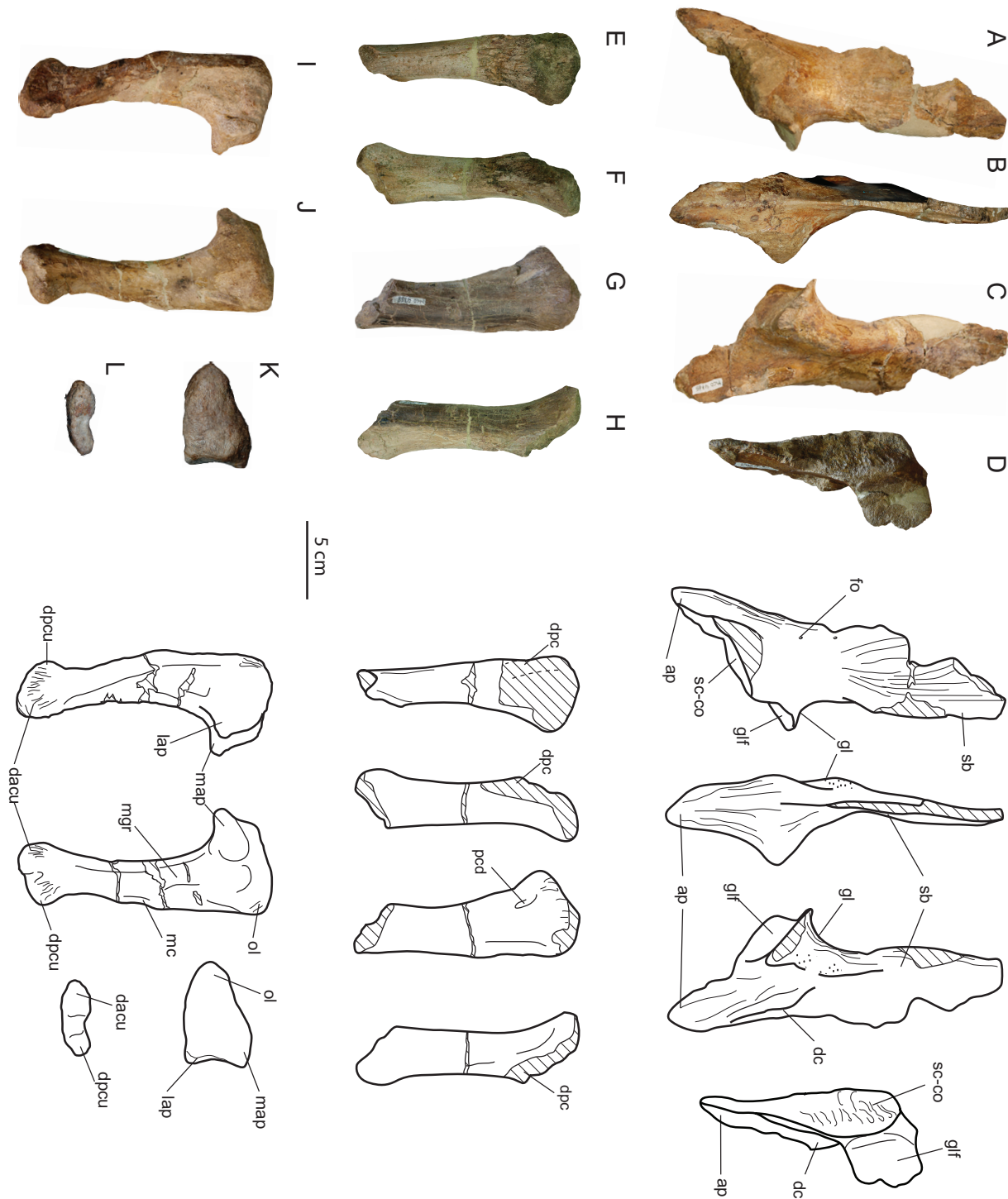


Figure 4 Appendicular forelimb elements of *Allodaposuchus hulki* and interpretative diagrams. Right scapula (MCD4765) in (A) medial, (B) anterior, (C) lateral, and (D) ventral view. Right humerus (MCD4758b) in (E) ventral, (F) medial, (G) dorsal, and (H) lateral view. Right ulna (MCD4760) in (I) lateral, (J) medial, (K) proximal, and (L) distal view. Abbreviation: ap, anterior process; dacu, distal anterior condyle of the ulna; dc, deltoid crest; dpc, deltopectoral crest; dpcu, distal posterior condyle of the ulna; fo, foramen; gl, glenoid; glf, glenoid fossa; lap, lateral anterior process; map, medial anterior process; mc, medial crest; mgr, medial groove; ol, olecranon; pcd, posterior circular depression; sb, scapular blade; sc-co, scapula-coracoid suture.

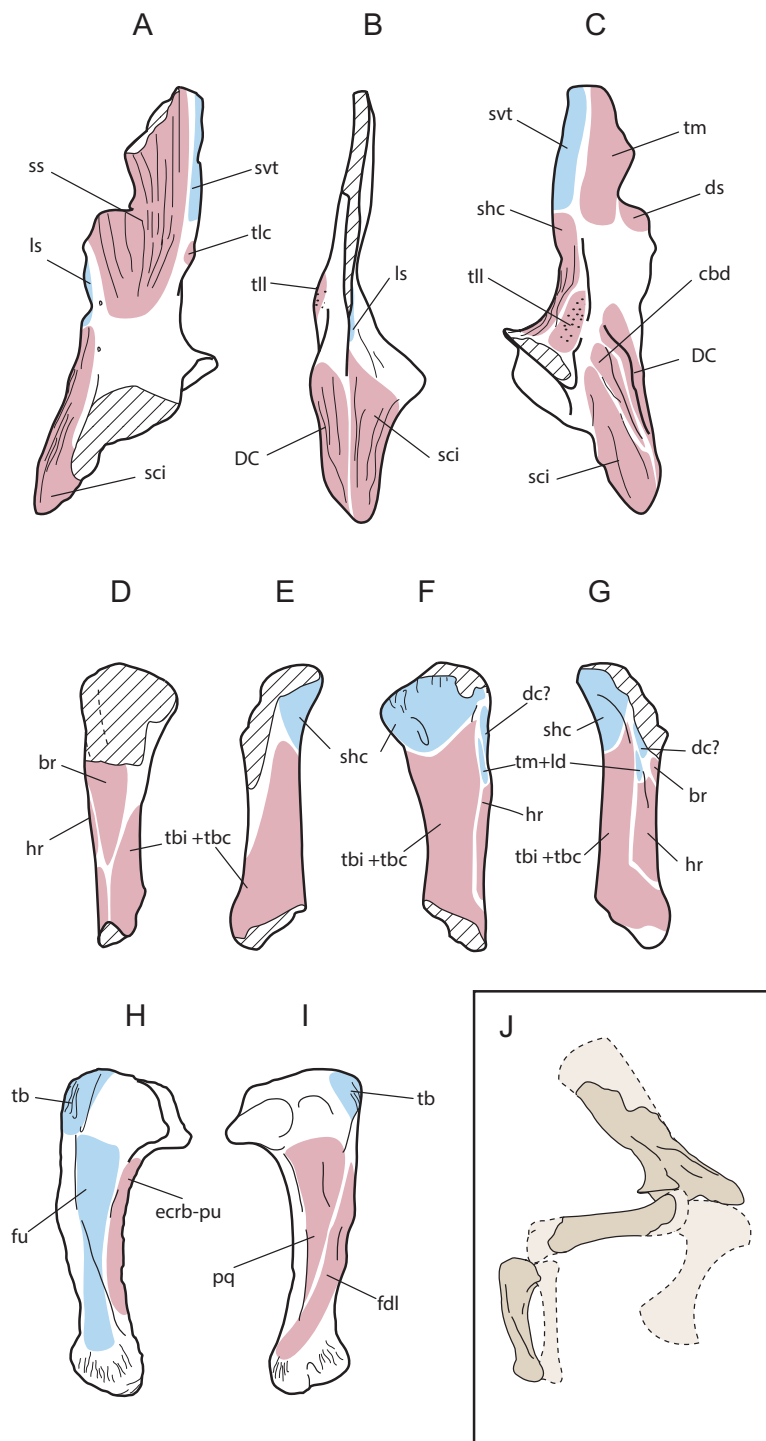


Figure 5 Muscular map of the forelimb bones of *Allodaposuchus hulki*. Right scapula (MCD4765; A-medial, B-anterior, C-lateral), right humerus (MCD4758b, D-ventral, E-medial, F-dorsal, G-lateral), right ulna (MCD 4760, H-lateral, I-medial); and reconstruction of the anterior limb configuration (J). Muscle origins are indicated in pink and insertions in blue. (continued on next page...)

Figure 5 (...continued)

Abbreviations: br, *M. brachialis*; cbd, *M. coracobrachialis brevis dorsalis*; dc, *M. deltoideus clavicularis*; DC, deltoid crest; ds, *M. deltoideus scapularis*; ecrd-pu, *M. extensor carpi radialis brevis-pars ulnaris*; fdl, *M. flexor digitorum longus*; fu, *M. flexor ulnaris*; hr, *M. humeroradialis*; ld, *M. latissimus dorsi*; ls, *M. levator scapulae*; pq, *M. pronator quadratus*; shc, *M. scapulohumeralis caudalis*; sci, *M. supracoracoideus intermedius*; ss, *M. subscapularis*; svt, *M. serratus ventralis thoracis*; tb, *M. triceps brachii*; tbc, *M. triceps brevis caudalis*; tbi, *M. triceps brevis intermedius*; tlc, *M. triceps longus caudalis*; tm, *M. teres major*; tll, *M. triceps longus lateralis*.

and the nomenclatural acts it contains have been registered in ZooBank, the online registration system for the ICZN. The ZooBank LSIDs (Life Science Identifiers) can be resolved and the associated information viewed through any standard web browser by appending the LSID to the prefix "<http://zoobank.org/>". The LSID for this publication is: urn:lsid:zoobank.org:pub:3735BA19-C38F-4F6E-93A5-3D302580E818. The online version of this work is archived and available from the following digital repositories: PeerJ, PubMed Central and CLOCKSS.

SYSTEMATIC PALEONTOLOGY

Order CROCODYLIFORMES *Hay, 1930 (sensu Benton & Clark, 1988)*,

Suborder EUSUCHIA *Huxley, 1875*,

Unranked CROCODYLIA *Gmelin, 1789 (sensu Benton & Clark, 1988)*,

Genus *Allodaposuchus* *Nopcsa, 1928*,

Allodaposuchus hulki sp. nov.

urn:lsid:zoobank.org:act:267AADFA-AD84-45F4-B195-D08E174559CC

(Figs. 2–6).

Etymology: *hulki*, from the character of Marvel, Hulk; due to the strong muscle attachments of the bones.

Differential diagnosis: *Allodaposuchus* differs from all other Eusuchians by the presence of the *canalis quadratosquamosoexoccipitalis*, or cranioquadrate passage, laterally open and represented by a sulcus (broader than in *Hylaeochampsia vectiana* *Owen, 1874*). *Allodaposuchus hulki* differs with *Allodaposuchus palustris* in having a linear frontoparietal suture, a prominent boss on paraoccipital process of the exoccipital, a small *foramen aëreum*, and lacking false-ziphodont teeth. *Allodaposuchus hulki* differs from *A. subjuniperus* by having the incisive foramen abutting the premaxillary tooth row, located between the first and second alveoli, the premaxillary-maxillary suture does not reach the incisive foramen, external naris opened in anterodorsal direction, no elevation around the rim of the external naris, absence of interorbital ridge, a very large medial jugal foramen, quadratojugal spine nearly absent and located near of the ventral angle in the infratemporal fenestra, medial articular hemicondyle of the quadrate without ventral expansion, and teeth without longitudinal grooves in the lingual side. *Allodaposuchus hulki* differs from *A. precedens* by having the premaxilla wider than long with four teeth positions, the third being the largest, a smaller and keyhole-shaped external naris, no elevation around the rim of the

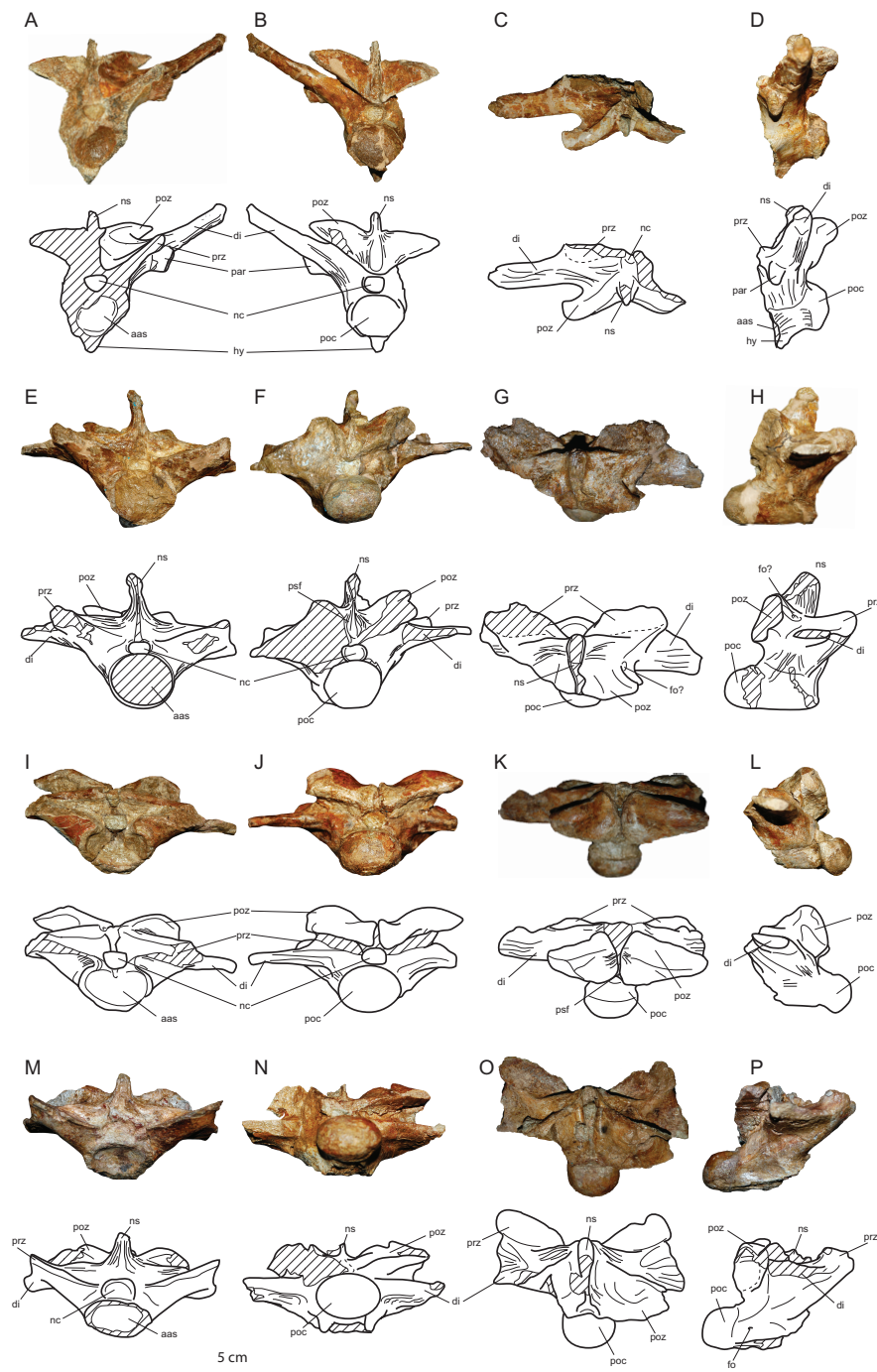


Figure 6 Axial elements of *Allodaposuchus hulki* and interpretative diagrams. Anterior dorsal vertebra (MCD5131) in (A) anterior, (B) posterior, (C) dorsal, and (D) left lateral view; first lumbar vertebra (MCD5136) in (E) anterior, (F) posterior, (G) dorsal, and (H) left lateral view; second lumbar vertebra (MCD4769) in (I) anterior, (J) posterior, (K) dorsal, and (L) left lateral view; third lumbar vertebra (MCD5126) in (M) anterior, (N) posterior, (O) dorsal, and (P) left lateral view. Abbreviations: aas, anterior articular surface; di, diapophysis; fo, foramen; hy, hypapophysis; nc, neural canal; ns, neural spine; par, parapophysis; poc, posterior condyle; poz, postzygapophysis; prz, prezygapophysis; psf, post-spinal fossa.

external naris, incisive foramen located between the first and second alveoli, dermal bones of skull roof overhanging supratemporal fenestra rim, two crests in the ventral surface of the quadrate without association of any tubercle, and capitata processes of laterosphenoid anteroposteriorly oriented, and teeth with smooth enamel.

Allodaposuchus hulki shows the following autapomorphies: Quadratojugal does not extend along the infratemporal fenestra; absence of fossa or shelf at anteromedial corner of the supratemporal fenestra; teeth bear smooth enamel, low-developed mesial and posterior carinae, and absence of longitudinal grooves in the lingual side.

Aside the previous characters, *A. hulki* has the following ambiguous autapomorphies: Spine of quadratojugal significantly reduced; no ridge surrounds the *foramen aëreum*; anterolateral, anteromedial and olecranon processes of the ulna well developed; ulnar shaft lateromedially compressed with lateral and medial grooves; distal condyles of the ulna turned lateroposteriorly, causing a lateral crest in the shaft. These features are ambiguous autapomorphies because these characters cannot be scored in other species of *Allodaposuchus*. Additionally, variability might affect the ridge surrounding the ridge surrounding the *foramen aëreum*. New discoveries may reveal whether they are autapomorphies of *A. hulki* or synapomorphies of the genus.

Holotype: MCD4757 (rib fragment), MCD4758a (jaw fragment), MCD4758b (right humerus), MCD4760 (right ulna), MCD4763 (left premaxilla), MCD4765 (right scapula), MCD5127 (dorsal rib), MCD5129 (right jugal and quadratojugal), MCD5131 (dorsal vertebra), MCD5134 (dentary fragment), MCD5139 (skull-table, exoccipitalis and left quadrate), MCD4769, MCD5126 and MCD5136 (lumbar vertebrae).

Locality, age and horizon: Casa Fabà site, Tremp Basin (NE Spain); lower part of the 'lower red unit' of the Tremp Fm; C31r of the early Maastrichtian (Late Cretaceous).

DESCRIPTION

Cranial skeleton

The cranial remains consist of an isolated left premaxilla (MCD4763), jaw fragments (MCD5134 and MCD4758a), an isolated right jugal and quadratojugal (MCD5129), and a posterior cranial fragment (MCD5139) that preserves frontal, left prefrontal, parietal, both squamosals, postorbitals, exoccipitals, left quadrate and laterosphenoid in connection (Figs. 2 and 3). The preserved portion of the skull table is markedly medially concave, with nearly horizontal sides and displays roughly straight margins. The supratemporal fenestrae are filled with sediment (Figs. 2A–2B). We estimated a total width ranging from 27 cm (from both lateral hemicondyles of the quadrates) to 34 cm (from both lateral edges of the quadratojugals).

Cranial openings

The external naris is undivided and keyhole-shaped (Figs. 3A–3B). It is 3.2 cm wide and opens in the antero-dorsal direction. In ventral view, there is a small and subcircular incisive foramen (1.7 cm wide), the anterior rim of which is located between the first and second alveoli (Fig. 3B). The medial margin of the left orbit is preserved, being able

to interpret its general morphology. The orbits are relatively wide and short, rounded with their rostromedial margin being somewhat elevated. Supratemporal fenestrae are subcircular in shape (4.5 cm maximum width) and filled with sediment. There is no fossa or shelf at the anteromedial corner of the supratemporal fenestrae. The otic aperture is developed between the squamosal, quadrate and exoccipital, and the cranioquadrate passage forms a caudolaterally open sulcus called *canalis quadratosquamosoexoccipitalis* (Buscalioni et al., 2001; Delfino et al., 2008). The squamosal and the quadrate are not in contact posteriorly to the otic opening.

Premaxilla

The premaxilla is nearly complete and characterized by its robust appearance. The premaxilla is rounded, and wider than long. Its posterodorsal margin is slightly eroded; thus, the presence of a notch or pit in the palatal side of premaxillary-maxillary suture, or the length of the premaxillary process, could not be confirmed. It contacts the maxilla posterolaterally, and probably the nasals medially (Figs. 3A–3B). There is no elevation along the lateral rim of the naris, and none seems to occur posteriorly. The naris opens flush with the dorsal surface of the premaxilla, without the development of any lateral notch. The internal cavity of the naris shows a large foramen in the rostral-most portion of the left surface, and several longitudinal ridges caudally to the incisive foramen, probably for soft tissues or muscle attachment. On the palatal surface, the premaxillary-maxillary suture does not abut the posterior margin of the incisive foramen, with the latter being completely included within the premaxilla. There are four premaxillary alveoli, but only the fourth tooth root is preserved within its socket. The first premaxillary alveolus is the smallest in size, while the second and fourth are similar in size, and the third is the largest (Fig. 3B). There is one occlusal pit between the first and second alveoli, and another between the second and third. No pit is present between the third and fourth alveoli.

Jugal

A complete right jugal bone, not preserving the postorbital bar, has been recovered (Figs. 3D–3E). It displays an elongated morphology and shows an ornamented external surface. Rostral and caudal edges of the jugal are respectively lateromedial turned, keeping an approximately constant lateromedial width. Along the orbit, the jugal dorsal margin is slightly elevated for contact with the lacrimal, making a rounded ventral margin of the orbit. The postorbital bar is lost, but insertion on the jugal can be defined as ‘inset’. In lingual view, an uncommonly large medial jugal foramen can be observed rostrally to the postorbital bar insertion. Another smaller foramen is also present rostrally to the former. Ventrally to these foramina, the articular surface with the maxilla begins and continues to the rostral edge.

Quadratojugal

Quadratojugal is a short and wide bone, forming the posterior angle of the infratemporal fenestra (Figs. 3D–3E). It does not bear any process along the lower temporal bar. It also does not extend to the superior angle of the infratemporal fenestra. The quadratojugal spine is nearly absent and low in position, near to the posterior angle of infratemporal

fenestra. In the lateral side, jugal and quadratojugal bear the same ornamentation pattern as the skull table.

Quadrate

Only the left quadrate is complete, being part of MCD5139 (Fig. 2). In lateral view, the quadrate contacts the squamosal rostrally, and the exoccipital caudally, forming the anteroventral margin of the external otic aperture and the ventral limit of the cranioquadrate passage. The quadrate also contacts the postorbital ventrally to the skull table, in the dorsal margin of the infratemporal fenestra. In dorsal view, the quadrate is short caudally to the paroccipital process of the exoccipital bone. Both articular hemicondyles are similar in size, although the medial hemicondyle is slightly smaller and ventrally deflected (Fig. 2C). From the posteroventral corner of the otic aperture, a soft sulcus passes along the quadratoexoccipital suture, in the posterolateral direction, parallel to the cranioquadrate passage, and ends abruptly. The *foramen aëreum* is small and located on the dorsal surface, close to the medial edge of the quadrate. No ridge surrounds the *foramen aëreum*. In ventral view, there are two well-marked crests corresponding to the muscle scars A and B of *Iordansky (1973)*, without the association of any tubercle (Fig. 2B). In contrast, the right quadrate is just broken ventrally to the otic aperture, showing the otic canal, also known as the *cavum tympanicum propium*, filled with sediment.

Frontal

The frontal forms the posteromedial corners of the orbits and the anteromedial corners of the supratemporal fenestrae. It contacts the postorbital laterodorsally and the parietal caudally (Fig. 2A). The frontal prevents contact between postorbital and parietal. The frontoparietal suture is nearly linear and enters the rostromedial margins of the supratemporal fenestrae. The dorsal surface of the frontal is markedly ornamented by subcircular pits that can reach 3 mm in diameter. The main body of the frontal is strongly concave at the centre of the dorsal surface, and the orbital margins are upturned. No interorbital ridge is present. The anterior process of the frontal is not preserved. At least part of the left prefrontal is also preserved in MCD5139 (Figs. 2A–2B).

Parietal

It contacts the frontal anteriorly and the squamosal laterally (Fig. 2A). There is no contact between the parietal and the postorbital in dorsal view. Contact with the supraoccipital could not be assessed due to preservation reasons. The parietal is longer than wide and displays a marked ornamentation on the dorsal surface, consisting of the same subcircular depressions present in the rest of the skull bones. The parietal is medially concave, as part of the general concavity of the skull table. A recess in the parietal communicates with the pneumatic system.

Postorbital

It contacts the squamosal posteriorly and the frontal anteromedially. In MCD5139, both postorbitals are longer than wide, displaying a well-curved contour in dorsal view (Fig. 2A). Postorbital constitutes the anterolateral corner of the supratemporal fenestra,

conferring rounded anterior edges to the skull table. It also forms the posterior orbital margin and the anterodorsal corner of the infratemporal fenestra. The ornamentation is the same as that of the rest of the skull table.

Squamosal

The squamosal is a triangular-shaped bone which contacts the postorbital anteriorly, the parietal medially, the quadrate anteroventrally, and the exoccipital posteroventrally, constituting the cranioquadrate passage (Fig. 2D). Posteriorly to the passage, the quadrate and the squamosal are separated by the exoccipital. In lateral view, two rims delimited a longitudinal groove for external ear valve musculature. These dorsal and ventral rims are parallel. In dorsal view, the suture between the squamosal and the postorbital is very posteriorly situated, reaching the caudal-most part of the lateral margin of the supratemporal fenestra. The squamosal develops a significantly posterolateral extension resulting in a horizontal margin of the skull table. In occipital view, the squamosal slopes ventrolaterally over the exoccipital, but the squamosal does not laterally surpass the paroccipital process of the exoccipital.

Supraoccipital

The skull table is damaged coinciding with the supraoccipital location; thus, the morphology of the supraoccipital and its relationships with other bones could not be assessed with confidence.

Exoccipital

It occupies most of the occipital surface, contacting the squamosal dorsally, and the quadrate lateroventrally (Fig. 2). The exoccipital conforms the caudoventral margin of the cranioquadrate passage. The paroccipital process does not extend much laterally, ending in the medial quadrate branch. In occipital view, the exoccipital shows a very prominent boss on the paraoccipital process. The *foramen magnum* is relatively preserved, but the ventral edges of exoccipitals are broken, and the suture with the basioccipital is missing.

Laterosphenoid

In palatal view, the laterosphenoid is situated medially in the braincase, between the supratemporal fenestrae (Fig. 2B). It contacts frontal rostrally and postorbitals laterally, conforming the rostromedial margin of supratemporal fenestra in ventral view. The capitate process of the laterosphenoid is anteroposteriorly oriented.

Dentary

Only a right fragment of the anterior part of the dentary was recovered (MCD5134), which is very fragmentary and incomplete (Fig. 3C). According to the medial curvature of the bone, we have interpreted this as the rostral-most portion of the right dentary, bearing from the first to the fourth alveoli. The lingual surface of the bone is not preserved, showing the alveoli in a section. Only two teeth are preserved *in situ*, the second and fourth, projecting anterodorsally. In the second alveolus, the functional tooth is lost, but there is a replacement non-erupted tooth. In contrast, the fourth tooth is a caniniform.

MCD4758a is an indeterminate fragment of the jaw. For preservation reasons, it is not possible to elucidate its position along the jaw. This fragment preserves three alveoli, bearing one erupted tooth (Figs. 3F–3G).

Dentition

The whole specimen preserves four teeth (one root in the premaxilla, two teeth in the dentary, and one tooth in MCD4758a). The teeth are circular in section and the tooth crowns are slightly blunt. Enamel lacks ornamentation, but several longitudinal ridges appear in the most basal portion of the crown in the lingual side. Anterior and posterior keels are poorly developed, and there are no longitudinal grooves next to the keels in the lingual side. These ridges are weak in MCD4758a, and more developed in the caniniform tooth of MCD5134. Replacement tooth of MCD5134 lacks ridges, probably due to being a non-erupted tooth (Fig. 3C).

Postcranial skeleton

Recovered postcranial skeleton of *Allodaposuchus hulki* is composed of a distal end of the right scapula (MCD4765), right humerus (MCD4758b), right ulna (MCD4760), two dorsal ribs (MCD4757 and MCD5127) and five vertebrae (one dorsal, three lumbar, and fragments of an indeterminate one, MCD5131, MCD5136, MCD4769, MCD5126 and MCD5125, respectively).

Scapula

Only the ventral edge of the scapula is preserved, showing the glenoid fossa, the deltoid crest, the anterior process of the scapula and part of the scapular blade (Figs. 4A–4D). The scapular blade is constricted at its beginning, and seems to flare dorsally. In posterior view, the scapular blade is sinuous. The glenoid is oriented posterolaterally. In lateral view, the posterior end of the scapular blade is straight. The lateral surface of the scapula bears several rugose areas (Fig. 4A). A rugose zone for the insertion of the *M. serratus ventralis thoracis* (Meers, 2003) is situated in the posterior edge of the scapular blade. In the same side, but in a more ventral position where the blade is constricted, another rugose area evidences the origins of the *M. scapulohumeralis caudalis*, and just dorsal to supraglenoid buttress a highly-developed rugosity constitutes the origin of the *M. triceps longus lateralis* (Meers, 2003). The anterior process of the scapula bears a wide deltoid crest. This crest is the origin of the *M. coracobrachialis brevis dorsalis* and the *M. deltoideus clavicularis*. Ventrally to the deltoid crest, a softer rugose area evidences the origin of the *M. supracoracoideus intermedius* (Figs. 4A–5C; Meers, 2003). In medial view, the scapula also shows several rugose areas for muscle attachment (Fig. 4A). The medial surface of the blade shows the origin of *M. subscapularis*, and *M. triceps longus caudalis* (Fig. 5A; Meers, 2003). In this view, a small foramen is present at the base of the scapular blade. The anterior process of the scapula also bears a soft rugose area for the origin of *M. supracoracoideus longus* (Meers, 2003). In the ventral side, the scapula-coracoid facet is present, and is broader caudally (Fig. 4D). Coracoid is not fused to the scapula. The sutural surface is teardrop-shaped, and the lateromedial width in the posterior portion is much greater than the anterior one.

Humerus

A right humeral diaphysis was recovered (Figs. 4E–4H). The proximal articular surface is eroded. The anterior tuberosity and the humeral head seem to have the same height, and the posterior tuberosity seems to be slightly distally positioned. The deltopectoral crest is missing because of the preservation. In lateral view, the proximal portion of the shaft is dorsally concave, and its distal portion is ventrally turned. The lateral surface of the humerus is slightly concave. In turn, the medial surface of the humerus is slightly convex. The shaft is broken proximally to the distal condyles.

Like the scapula, the humerus also shows several rugous areas around the bone. In posterior view (Fig. 4G), a wide rugous area is situated caudally to the condyles, corresponding to the insertion of the *M. scapulothoracalis caudalis* (Figs. 5D–5G; Meers, 2003). The dorsal surface bears a single insertion scar for *M. teres major* and *M. dorsalis scapulae* (according to Brochu, 2011), or *M. teres major* and *M. latissimus dorsi* (according to Meers, 2003). The shaft shows small and soft ridges completely occupying the dorsal surface. These ridges correspond at least to the origin of the *M. triceps brevis intermedius*, and possibly the *M. triceps brevis cranialis* (Meers, 2003), but limits between both muscles are not distinguished. The origins of *M. triceps brevis intermedius* extends to medial side of the shaft (Figs. 5D–5G). The lateral surface of the shaft shows part of the origins of *M. triceps brevis intermedius*, and the origin of the *M. humeroradialis* (Meers, 2003). The deltopectoral crest is lost, lacking most of the *M. deltoideus clavicularis* insertion (Meers, 2003). A small crest (lineae intermuscularis humeroradialis-brachialis) is situated laterally to the insertion of *M. teres major*. In ventral view (Figs. 5D–5G), descriptions for muscle attachment in the proximal epiphysis could not be made for preservation reasons. However, the shaft shows the end of the origin of *M. triceps brevis intermedius* in medial margin, and the end of the origin of *M. humeroradialis* in the lateral one. At the middle of the shaft, the origin of *M. brachialis* is present (Meers, 2003), distally to the deltopectoral crest location.

Ulna

The right ulna is one of the best-preserved bones (Figs. 4H–4K). The proximal end of the ulna is anteroposteriorly expanded. In proximal view, it is triangular-shaped, with a very prominent vertex. The olecranon process is acute, and the articular surface for the radius is concave. There is a very sharp process medially to the articular surface for the radius. The shaft is compressed mediolaterally, and shallow grooves could be discerned in the medial and lateral sides. The distal half of the shaft is prominently oriented anteriorly. Both distal condyles are compressed and anterolateral to mediocaudally oriented. As a result of this torsion, there is a ridge in the lateral side of the distal end of the ulna.

The ulna also shows several muscle attachments. A rugosity abuts the olecranon process in caudal, lateral and medial views, and evidences the insertion of *M. triceps brachii* (Meers, 2003). In lateral view (Fig. 4H), the *M. flexor ulnaris* originates in a groove situated just distally to the sharp process of the articular surface of the radius. *M. flexor ulnaris* disposes over the lateral ridge of the ulna. Rostrally to it, a very soft ridge conforms the origin of *M. extensor carpi radialis brevis—pars ulnaris*, close to the anterior margin and facing

to the radius (Fig. 5H). In the medial side (Fig. 4I), other groove supports the origin of *M. pronator quadratus* (Meers, 2003). A small crest is situated caudally to this groove, in addition to other soft ridges, which comprise the origin of *M. flexor digitorum longus* (Fig. 5I; Meers, 2003). There are also very rough areas laterally and medially to the distal condyles for ligament attachments, with the lateral one being more developed than the medial.

Vertebrae

The preserved vertebrae have been sorted based on the presence of the keels and the position of the parapophyses, according to Mook (1921). The fourth dorsal vertebrae (MCD5131) and the first (MCD5136), second (MCD4769) and third (MCD5126) lumbar have been recovered. All vertebrae are strongly procoelus.

MCD5131 (Figs. 6A–6D) is broken at the right side, and prezygapophyses, right diapophysis and parapophysis, and neural spine are lost. Postzygapophyses are elongated lateromedially and short anteroposteriorly, its articular surface faces ventrally and is lateromedially inclined. The left parapophysis is located at the base of diapophysis. The diapophysis is elongated and dorsolaterally oriented, but thin anteroposteriorly. The centrum and the neural arch are completely fused. The centrum is relatively short anteroposteriorly. A well-developed hypapophyseal keel is present ventrally to the centrum. Wide striated areas can be observed at the base of the neural arch, under the diapophyses and postzygapophyses, in the ventral side of the centrum, and dorsally to the neural arch, between the diapophysis, post- and prezygapophysis, and neural spine. These areas are consistent with a strong muscle attachment.

Lumbar vertebrae (MCD5136, MCD4769 and MCD5126; Figs. 6E–6P) are partially broken or eroded. Pre- and postzygapophyses are broader than those of the dorsal, and progressively wider from the first to the third lumbar. Neural spines are partially broken, but they seem to be wide anteroposteriorly and low. Transverse processes are horizontally oriented, and progressively decrease in height with respect to the centrum. They are laterally shorter and anteroposteriorly wider from the first to the third lumbar. There is a longitudinal groove ventrally to the centrum in all lumbar vertebrae. Like the dorsal vertebrae, wide striated areas are present laterally to the neural arch, across the diapophyses, in the ventral side of the centrum, and between the diapophysis, post- and prezygapophysis, and neural spine.

Ribs

Two partial ribs were recovered. One of them comprises only the shaft of a right dorsal rib (MCD5127) lacking its capitular and tubercular processes. It is elongated (19.2 cm long) and lateromedially compressed. In section, it is teardrop-shaped, with its thinner margin cranially, forming an anterior crest of the shaft. Soft ridges for muscle or ligaments attachments are present lateral and medially in the distal-most portion of the shaft. In turn, MCD4757 consists of the capitular and tubercular processes of an anterior-most left dorsal rib, which lacks the shaft.

Comparative anatomy

Cranial remains are comparable to other species of *Allodaposuchus*, especially to the nearly complete skulls of *A. precedens* and *A. subjuniperus* (Delfino et al., 2008; Puértolas-Pascual, Canudo & Moreno-Azanza, 2014; respectively). However, postcranial remains are only comparable to *A. palustris* (Blanco et al., 2014) due to the absence of published material of the others.

Several characters of the premaxilla distinguish *Allodaposuchus hulki* from the other species of the genus. The external naris opens in the antero-dorsal direction like *A. precedens*. In turn, naris of *A. subjuniperus* opens in dorsal direction. The external naris is significantly smaller than *A. precedens* and keyhole-shaped in *A. hulki*. Unlike *A. precedens* and *A. subjuniperus*, there is no elevation along the rim of the external naris. However, no lateral notch develops on the dorsal surface of premaxilla next to the naris opening, like *A. precedens* and *A. subjuniperus*. In palatal view, the incisive foramen is located more anteriorly than *A. precedens* and *A. subjuniperus*. In *A. hulki* the anterior rim of the incisive foramen is located between the first and second alveoli, whereas in *A. subjuniperus*, it reaches the third premaxillary alveolus. The premaxilla is wider than long, like *A. subjuniperus*. However, unlike *A. subjuniperus*, the premaxillary-maxillary suture does not reach the posterior margin of the incisive foramen, like *A. precedens*. The number of premaxillary alveoli is four, with the third alveolus being the largest, like *A. subjuniperus*. The premaxilla of *A. precedens* shows five teeth, and the fourth is the largest. Moreover, *A. hulki* shows a pattern of occlusal pits, different to *A. precedens* and *A. subjuniperus*: there is one occlusal pit between the first and second alveoli, another between the second and third, and no pit between the third and fourth alveoli. In turn, *A. precedens* shows one occlusal pit between the third and the fourth, and another between the fourth and the fifth alveoli, whereas *A. subjuniperus* shows only a large diastema between the first and second alveoli.

In addition, the skull table of *A. hulki* also shows differences from the other species of the genus. The main body of the frontal is concave medially, like *A. palustris* and *A. precedens*, and the orbital margins are upturned. However, this concavity is strongly marked in *A. hulki*, but only slightly in *A. palustris* and *A. precedens*. In contrast, *A. subjuniperus* shows a practically flat frontal with a low transverse interorbital ridge at the beginning of the anterior process. *Allodaposuchus palustris* also shows the interorbital ridge. Nevertheless, no interorbital ridge is present in *A. hulki* and *A. precedens*. The orbits of *A. hulki* are wide and short, like *A. precedens* and *A. subjuniperus*. In contrast, *A. palustris* shows relatively large and elongated orbits. However, the four species of *Allodaposuchus* have an elevated rostromedial margin of the orbits. The frontoparietal suture of *A. hulki* is nearly linear, like *A. subjuniperus* and *A. precedens*. *Allodaposuchus palustris* is the only 'allodaposuchian' that shows a concavo-convex frontoparietal suture. Additionally, *A. hulki* and *A. palustris* are the two species that do not show a fossa or shelf around the supratemporal fenestrae.

Like *A. precedens*, both articular hemicondyles of the quadrate of *A. hulki* are similar in size, although the medial hemicondyle is slightly smaller and ventrally deflected. In turn, *A. subjuniperus* shows a ventral expansion in the medial hemicondyle. The foramen aëreum of *A. hulki* is small, like *A. precedens* and *A. subjuniperus*, but large in *A. palustris*. This

foramen is located on the dorsal surface, close to the medial edge of the quadrate, in all species of *Allodaposuchus*. However, in *A. hulki*, no ridge surrounds the *foramen aëreum*, unlike the other three species of *Allodaposuchus*. Like *A. subjuniperus*, in ventral view, there are two muscle scars of *Iordansky (1973)*, without the association of any tubercle. *Allodaposuchus precedens* only shows one crest ending abruptly and forming a small tubercle, and *A. palustris* does not show any crest.

The exoccipital of *A. hulki*, *A. subjuniperus*, and *A. precedens* bears a very prominent boss on the paraoccipital process. *Allodaposuchus palustris* is the only ‘allodaposuchian’ that does not show this boss.

In ventral view, the capitata process of the laterosphenoid is anteroposteriorly oriented in *A. hulki* and *A. subjuniperus*, but is laterally oriented in *A. precedens*.

The quadratojugal of *A. hulki* shows a characteristic shape that represents a few autapomorphies of this taxon. Unlike *A. precedens* and *A. subjuniperus*, the quadratojugal does not extend to the superior angle of the infratemporal fenestra. Moreover, the quadratojugal spine is almost absent and near the ventral angle in the fenestra infratemporal. *Allodaposuchus precedens* and *A. subjuniperus* show the quadratojugal spine in a higher position in the fenestra. This spine is highly developed in *A. subjuniperus*.

The dentition of *A. hulki* also shows several characters that distinguish this form from the other species of the genus. In *A. hulki*, the enamel lacks ornamentation, both anterior and posterior carinae are poorly developed, and there are no longitudinal grooves in the lingual side. In contrast, *A. palustris* and *A. precedens* show ornamented enamel with well-developed carinae, whereas *A. subjuniperus* and *A. palustris* bear well-marked longitudinal grooves in the lingual side.

Concerning the axial skeleton, all recovered vertebrae are procoelous. This character clearly indicates a Eusuchian condition (*Salisbury et al., 2006*). Preserved dorsal and lumbar vertebrae are similar in shape to those of *Crocodylus acutus*, *Crocodylus niloticus*, *Alligator mississippiensis*, *Osteolaemus tetraspis* and *Allodaposuchus palustris*. However, all of the vertebrae of *A. hulki* show wide areas for muscle or ligament attachment, which are absent in those of *A. palustris*.

The appendicular skeleton is poorly comparable to *A. palustris*. This specimen does not preserve the scapula and ulna, but a fragmentary humerus, radius and hindlimb bones (*Blanco et al., 2014*). The scapula of *A. hulki* is similar in shape to those of extant crocodylians. The scapular blade shows a constriction dorsally to the glenoid and anterior process, and flares dorsally. However, in caudal view, the glenoid is more conspicuous and the scapular blade is more sinuous than in extant taxa. In addition, the scapula of *A. hulki* bears more developed scars for the origin of *M. scapulohumeralis caudalis*, *M. triceps longus lateralis*, *M. supracoracoideus intermedius* and *M. supracoracoideus longus* than in the other taxa compared. The humerus of *A. hulki* is clearly more robust and also shows more developed origins of *M. humeroradialis* and *M. brachialis* than in *A. palustris* and other extant taxa. In the latest taxa, the humeral surface is mainly smooth, but in *A. hulki* it is completely covered by soft ridges for muscle attachments. However, the humerus of *A. hulki* resembles those of the compared taxa in shape. In contrast, the ulna of *A. hulki* largely

differs from the morphology of the extant crocodylians. The proximal epiphysis of the ulna of *A. hulki* has three well-developed processes (the olecranon directed posteriorly, an anteromedial process, and an anterolateral process). These processes are weakly developed in extant crocodylians, but well-developed in *Sebecus* and other terrestrial notosuchians (Pol *et al.*, 2012; and references therein). Nevertheless, the general morphology of the proximal surface of the ulna is different between those fossil taxa and the new taxon of *Allodaposuchus*. The shaft of this bone is lateromedially compressed in *A. hulki*, unlike the other compared taxa that show a subcircular shaft in cross-section. Additionally, the torsion of the distal condyles, the crest for the origin of *M. flexor digitorum longus*, and the lateral and medial grooves for the origin of *M. flexor ulnaris* and *M. pronator quadratus*, respectively, have not been seen in other taxa used for comparison.

Thus, given all of the factors discussed above, *Allodaposuchus hulki* seems to be morphologically intermediate to *A. subjuniperus* and *A. precedens*, with several unique characters. In addition, as noted by Blanco *et al.* (2014), the appendicular skeleton seems to be conservative in fossil 'allodaposuchians' and living taxa. Nevertheless, despite appendicular bones could not be directly compared between *A. hulki* and *A. palustris*, both 'allodaposuchians' show stronger muscle and ligament scars than in other taxa used for comparison.

RESULTS

Endocranial configuration

As typical for archosaurs, the brain did not occupy the entire endocranial cavity (Witmer *et al.*, 2008). The 3D reconstruction of the cranial fragment reveals the morphology of some parts of the olfactory bulbs, the cerebral hemispheres, cranial nerves, inner middle ear and tympanic recesses (Fig. 7).

The preserved portion of the endocast shows the typical sigmoid morphology. However, just the most anterior part of the olfactory bulbs are preserved, whereas the cerebral hemisphere is dorsally well preserved but lacking some ventral areas for preservation reasons. Some of the left side cranial nerves are recognisable, in particular the nerve V system, particularly V₁, V₂ and V₃ as well as nerves III, IV and XII. The inner middle ear is present but badly preserved. Moreover, the low pixel resolution of the CT scan avoids assessing its morphology with confidence and is therefore not included in the figures (Fig. 7E).

Of particular interest are the tympanic recesses in the cranial fragment. On the one hand, the intertympanic recess is very developed. In extant crocodylians, such as *Crocodylus johnstoni* Krefft, 1873 (Witmer & Ridgely, 2008), the anterior part of the intertympanic recess presents a semicircular morphology, whereas in the described specimen, a complete circle morphology is found due to the development of an anterior portion. In connection with the intertympanic recess, there is a *cavum tympanicum proprium* with a similar morphology to that in other extant crocodylians. However, on the other hand, the quadrate sinus is very wide in comparison with other extant crocodylians (Witmer *et al.*, 2008; Witmer & Ridgely, 2008) in the reported specimen.

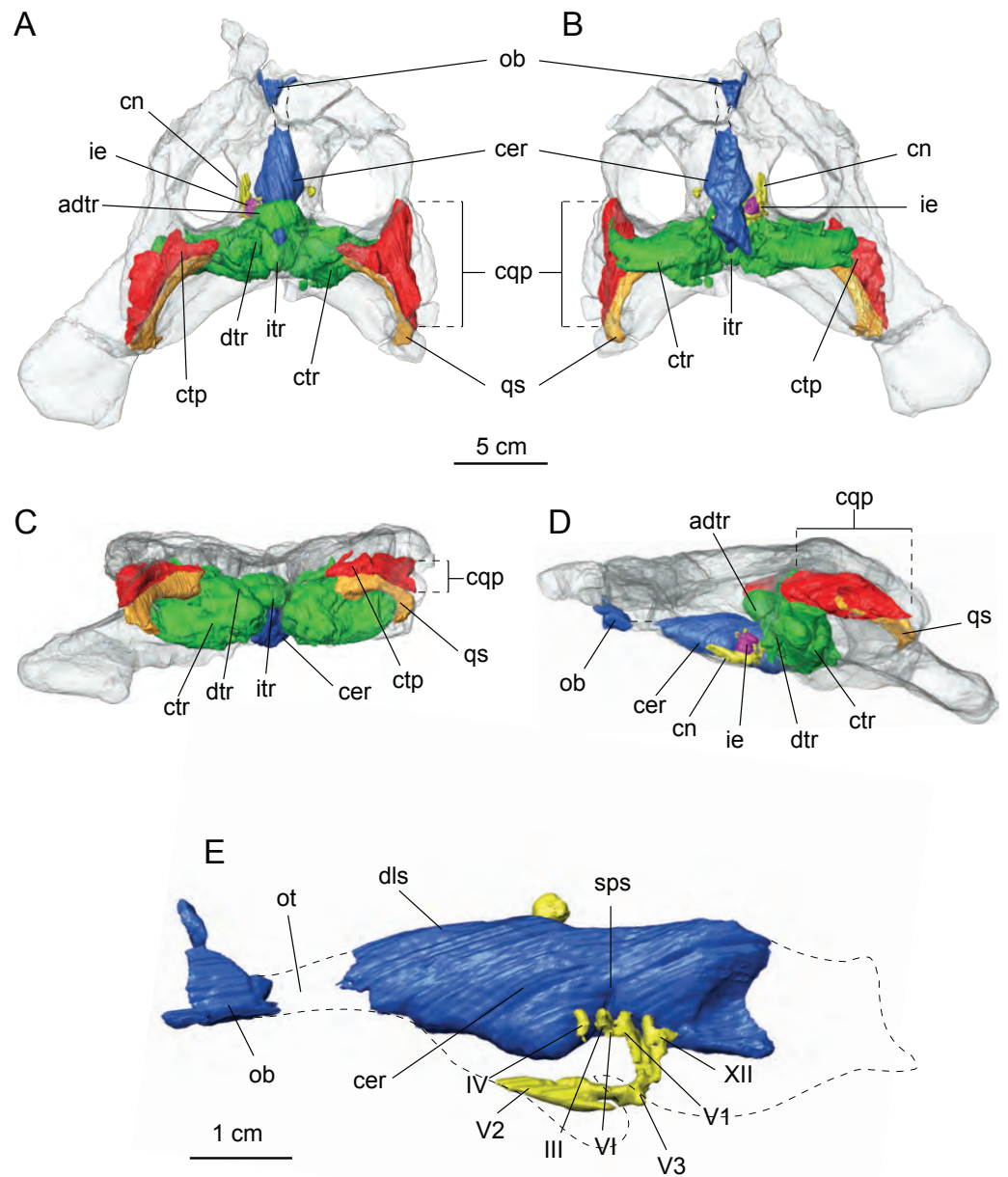


Figure 7 Cranial endocast and pneumatic sinuses within the semi-transparent body skull of *Allodaposuchus hulki*. MCD5139 derived from surface rendering of CT scan data in (A) dorsal, (B) ventral, (C) caudal, and (D) left lateral view. (E) Detail of the braincase and cranial nerves; the inner ear is removed because it obscured some endocast details. Abbreviations: adtr, anterodorsal tympanic recess; cer, cerebral hemisphere; cn, cranial nerves; cqp, craniocuadrate passage; ctp, *cavum tympanicum proprium*; ctr, caudal tympanic recess; dls, dorsal line dural venous; dtr, dorsal tympanic recess; ie, inner ear; itr, intertympanic recess; ob, olfactory bulb; ot, olfactory track; qs, quadrate sinus; sps, sphenoparietal dural venous. Cranial nerve identification: III, oculomotor nerve canal; IV, trochlear nerve canal; V1, ophthalmic nerve canal; V2, maxillary nerve canal; V3, mandibular nerve canal; VI, abducens nerve canal; XII, hypoglossal nerve canal.

Phylogenetic relationships

The cladistic analysis resulted in 1,240 equally parsimonious cladograms of 600 steps (CI = 0.382; RI = 0.811; RC = 0.310), and includes the specimen from Casa Fabà in the genus *Allodaposuchus*. The strict consensus tree (Fig. 8) shows similar topology to the last hypothesis about *Allodaposuchus* emplacement (Blanco *et al.*, 2014), in contrast to some previous works that suggest that *Allodaposuchus* is a sister taxa of hylaeochampsids (Buscalioni *et al.*, 2001; Delfino *et al.*, 2008; Puértolas-Pascual, Canudo & Moreno-Azanza, 2014) or derived alligatoroid (Martin, 2010). In the present analysis, as in Blanco *et al.* (2014), the clade ‘Allodaposuchia’ was included within Crocodylia, placed in a more derived position than Gavialoidea, and forming a polytomy with *Borealosuchus*, Planocraniidae and the clade Brevirostres (Crocodyloidea + Alligatoroidea). However, in the present analysis, the relationships between *Arenysuchus* and *Allodaposuchus* species were better resolved. In Blanco *et al.* (2014), *A. palustris* is the most basal ‘allodaposuchian’, whereas *A. precedens*, *A. subjuniperus*, and *Arenysuchus* form a polytomy. Our results suggest that *A. precedens* and the Eusuchian from Casa Fabà are more derived than *A. subjuniperus* and *Arenysuchus*. Both results agreed that *A. palustris* is the most basal crocodylian of the genus, and that *Arenysuchus gascabadiolorum* could be included within the clade ‘Allodaposuchia’. However, the relationships of *Arenysuchus* with this genus exceed the aim of this paper, and should be confirmed in detail in future works.

DISCUSSION

Phylogeny

The most parsimonious hypothesis obtained in our analyses suggests that the clade ‘Allodaposuchia’ belongs to Crocodylia (Fig. 8). Even though the Bremer and bootstrap values were low, the clade ‘Allodaposuchia’ has similar support to the other clades of Crocodylia. According to Blanco *et al.* (2014), the genus *Allodaposuchus* might represent more derived Eusuchian crocodylomorphs than previously thought (Buscalioni *et al.*, 2001; Delfino *et al.*, 2008; Narváez & Ortega, 2011; Puértolas-Pascual, Canudo & Moreno-Azanza, 2014) but not as derived as in Martin (2010). This hypothesis is supported by several cranial and vertebral characters. According to Brochu (1997), the inclusion of the clade ‘Allodaposuchia’ within Crocodylia would be supported by the following synapomorphies: (1) anterior dentary teeth project anterodorsally, (2) retroarticular process projects posterodorsally, (3) frontoparietal suture concavo-convex, (4) mature skull table with nearly horizontal sides, and long posterolateral squamosal rami along paraoccipital process, (5) exoccipital lacks boss on paraoccipital process, and (6) hypapophyseal keels are present on the eleventh vertebrae behind the atlas. Absence of the boss in the paraoccipital process, only in *A. palustris*, would be an ancestral state reverted in other members of the clade ‘Allodaposuchia’ (Blanco *et al.*, 2014). The following synapomorphies related *Allodaposuchus* with *Borealosuchus* + Planocraniidae + Brevirostres (*sensu* Brochu, 1997): (1) slender postorbital bar, (2) ventral margin of postorbital bar inset from lateral jugal surface, (3) skull table surface planar at maturity, (4) frontoparietal suture concavo-convex, (5) neural arch of the axis lacking lateral processes (diapophyses),

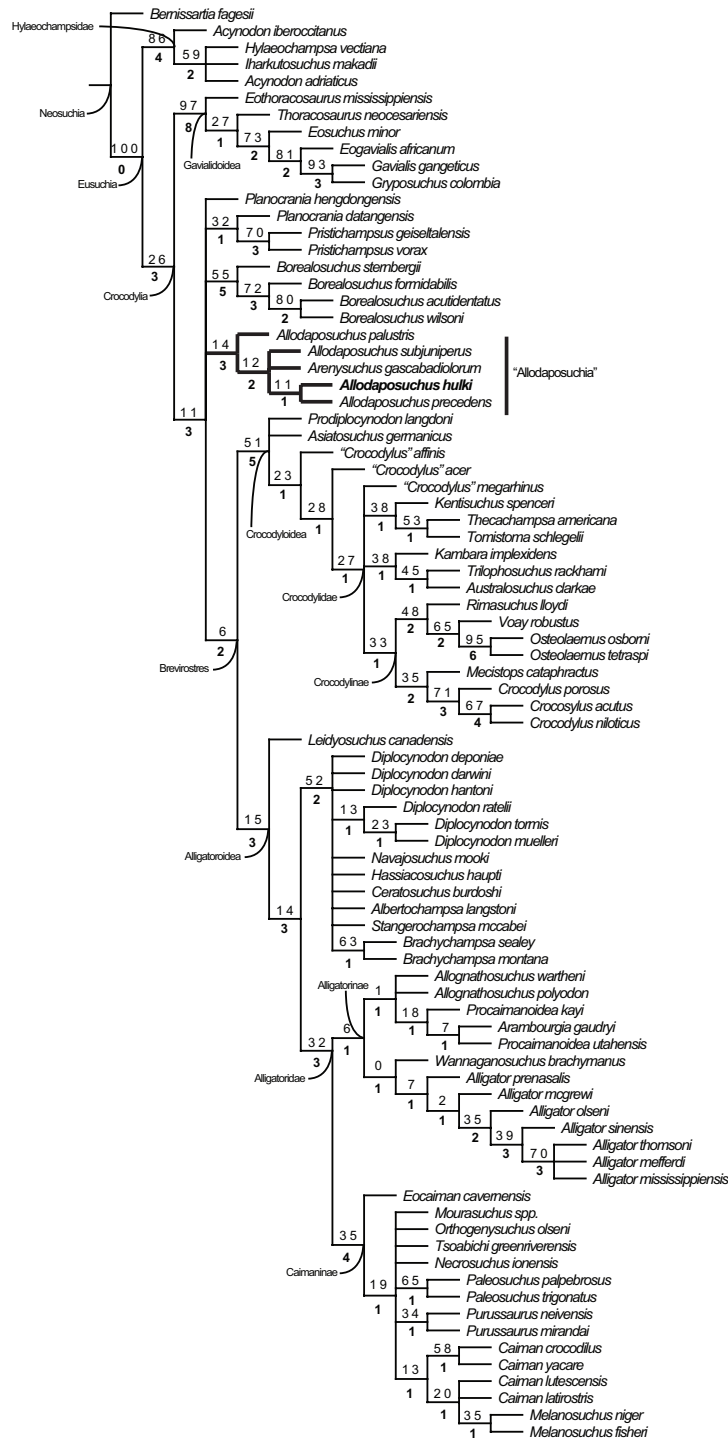


Figure 8 Resulting strict consensus cladogram illustrating the phylogenetic relationship of *Allodaposuchus hulki* and the basal position of 'Allodaposuchia' within Crocodylia. Values above nodes represent bootstrap percentage, whereas values under nodes represent Bremer support.

(6) wide posterior half of the axis neural spine, (7) axial hypapophysis without deep fork, and (8) *M. teres major* and *M. dorsalis scapulae* inset with common tendon on humerus. The concavo-convex frontoparietal suture, only in *A. palustris*, would be a reverted state in the other members of the clade ‘Allodaposuchia’ (Blanco et al., 2014).

The inclusion of Casa Fabà Eusuchian within the genus *Allodaposuchus* is well supported by the phylogenetic analyses (Fig. 8) and qualitative data (see above). *Allodaposuchus* differs from all other Eusuchians by the exclusive combination of the following synapomorphies (Blanco et al., 2014): margin of the orbits upturned; quadrate and squamosal not in contact on the external surface of the skull, posteriorly to the external auditory meatus; caudal margin of otic aperture not defined and gradually merging into the exoccipital; dermal bones roof overhang rim of supratemporal fenestra; cranioquadrate passage or *canalis quadratosquamosoexoccipitalis* laterally open and represented by a sulcus (broader than in *Hylaeochampsia vectiana*), with the exoccipital between the squamosal and the quadrate posterior to otic aperture. The ventral process of the exoccipital is not involved in the basioccipital tubera; the quadrate *foramen aëreum* on the dorsal surface. When preserved, all of the characters found in the specimen of Casa Fabà are in agreement with the synapomorphies of *Allodaposuchus*.

Allodaposuchus hulki, *A. precedens* and *A. subjuniperus* share a linear frontoparietal suture [C. 151 (1)], the presence of a shallow fossa or shelf at anteromedial corner of supratemporal fenestra [C. 153] (posteriorly reverted in *Allodaposuchus hulki* [C. 153 (1)]), and the exoccipital with very prominent boss on the paraoccipital process [C. 174 (0)].

Allodaposuchus hulki and *A. precedens* share the incisive foramen abutting the premaxillary tooth row [C. 89 (1)], external naris opened in anterodorsal direction [C. 81 (0)], and a very large medial jugal foramen [C. 102 (1)]. Such foramen is larger in *A. hulki* than in *A. precedens*, and consequently than in any other *Allodaposuchus*.

Allodaposuchus hulki shows some autapomorphies compared to other members of the clade ‘Allodaposuchia’: the quadratojugal that does not extend along the infratemporal fenestra [C. 145 (1)], the absence of fossa or shelf at anteromedial corner of supratemporal fenestra [C. 153 (1)], and teeth with characteristic morphology. In contrast, *A. precedens* shows dermal bones of the skull roof not overhanging supratemporal fenestra rim [C. 152 (0)], and capitate processes of laterosphenoid that are laterally oriented [C. 166 (0)]. In addition to the characters provided in the phylogenetic matrix, several qualitative morphological characters could be added to the phylogenetic results (see above). All of these differences justify the assignment of the specimen from Casa Fabà to a different species within *Allodaposuchus*.

Cranial pneumaticity and paratympanic recesses

In recent times, the virtual reconstruction of cranial cavities of extant and extinct archosaurs has provided an enormous advance in knowledge about the configuration and evolution of the brain regions and the surrounding bony recesses. Most of these studies focus on the endocast morphology as well as the inner ear disposition and its

paleobiological implications (e.g., [Witmer & Ridgely, 2009](#); [Kley et al., 2010](#); [Fernández et al., 2011](#); [Bona, Degrange & Fernández, 2013](#), and references therein).

Despite lacking most of its ventral and posterior-most parts, the general shape of the cranial endocast of *Allodaposuchus hulki* ([Fig. 7](#)) is similar to those of extant crocodylians (e.g., *Gavialis gangeticus* [Gmelin, 1789](#), *Crocodylus johnstoni*, *Alligator mississippiensis*; see [Wharton, 2000](#); [Witmer et al., 2008](#); [Witmer & Ridgely, 2009](#); [George & Holliday, 2013](#), respectively). Furthermore, the overall configuration of the cranial endocast of the specimen resembles that of many other crocodylomorphs such as notosuchians (e.g., *Anatosuchus* [Sereno et al., 2003](#), *Araripesuchus* [Price, 1955](#), and *Simosuchus* [Buckley et al., 2000](#); see [Sereno & Larsson, 2009](#); [Kley et al., 2010](#), respectively) and metriorhynchids ([Fernández et al., 2011](#)). The curvilinear dorsal counter of the endocast exhibited by *Allodaposuchus hulki* is more similar to those observed in Neosuchia ([Witmer & Ridgely, 2008](#); [George & Holliday, 2013](#); [Fig. 7A](#)) than the characteristic spade-shape outline showed by notosuchians ([Sereno & Larsson, 2009](#); [Kley et al., 2010](#)). In sagittal view, the shape of the cranial cavity indicates that most of the braincase elements were arranged in a planar configuration ([Figs. 7D and 7E](#)), in contrast to the sigmoidal organisation of most of the extant crocodylians [Witmer et al., 2008](#); [Witmer & Ridgely, 2009](#); [George & Holliday, 2013](#). Another significant feature of the braincase of *Allodaposuchus hulki* is that in dorsal view, the cerebrum exhibits a rhomboid shape, which is more elongated rostrally than extant crocodylians, and shows a gentle transition to the olfactory track ([Figs. 7A and 7B](#)).

In comparison to works analysing braincase morphology, there are few studies focusing on the system of pneumatic cavities surrounding the main endocranial body ([Witmer et al., 2008](#); [Witmer & Ridgely, 2009](#); [Witmer & Ridgely, 2010](#); [Bona, Degrange & Fernández, 2013](#)). In extant crocodylians, the paratympanic system is divided in the three main parts: (1) two caudal tympanic recesses connected by (2) the inner tympanic recess, which also links (3) the dorsal tympanic recesses located at each side of the endocranial cast ([Witmer et al., 2008](#)). The same configuration is observed in the Miocene caimanine *Mourasuchus nativus* [Gasparini, 1985](#) ([Bona, Degrange & Fernández, 2013](#)). [Dufeu & Witmer \(2007\)](#) noted several ontogenetic changes in the tympanic cavities along the life history of *Alligator mississippiensis*. The authors stated that these changes could also be phylogenetically tracked within the Crurotarsia lineage, as basal taxa show the young alligator condition, whereas more crownward taxa resemble the adult one. In this regard, *A. hulki* shows endocranial features of both juvenile (i.e., large quadrate sinuses) and adult alligators (i.e., well-developed dorsal tympanic recesses).

In addition, *Allodaposuchus hulki* exhibits some important differences in the tympanic system configuration observed in extant adult crocodylians. First, it shows a well-developed pneumatic cavity connecting anteriorly both dorsal tympanic recesses. This sinus, herein referred as anterodorsal tympanic recess, covers part of the sphenoparietal dural venous sinus but leaving a circular opening at the level of the occipital dural venous sinus ([Fig. 7A](#)). In some ways, it resembles the frontal recess observed in the *Struthio camelus* Linnaeus ([Witmer & Ridgely, 2009](#)), but not so developed in *Allodaposuchus*. Although variations in the paratympanic system are reported in more derived archosaurs (i.e., some

non-avian theropods exhibit supraoccipital pneumatic sinus connected to the tympanic pneumaticity, and birds have enlarged both dorsal and caudal tympanic recesses; [Witmer & Ridgely, 2009](#); [Witmer & Ridgely, 2010](#)), nothing like the anterodorsal tympanic recess of *A. hulki* has been recognised so far. In addition, another distinctive feature of the tympanic system of the new species is the caudolateral expansion of the caudal tympanic recesses; which excavate a large cavity within the exooccipital bones. Such caudal tympanic sinus configuration is not present in any extant crocodylomorph, neither has it been reported previously from any extinct one, but it resembles that of large non-avian theropods ([Witmer et al., 2008](#); [Witmer & Ridgely, 2009](#); [Witmer & Ridgely, 2010](#)).

The external ear of the genus *Allodaposuchus* is distinguished by a broad cranioquadrate passage, a feature shared with the basal Eusuchian *Hylaeochampsia* ([Buscalioni et al., 2001](#); [Delfino et al., 2008](#); [Blanco et al., 2014](#); [Puértolas-Pascual, Canudo & Moreno-Azanza, 2014](#)). Although its external morphology has been described in detail by several authors, here we provide the first tridimensional reconstruction of this cranial cavity and its relationship with the tympanic sinus and the braincase ([Fig. 7](#)). The cranioquadrate passage of *Allodaposuchus hulki* opens to a well-developed *cavum tympanicum proprium* that is lateromedially directed ([Fig. 7A](#)), which connects to the tympanic complex at the level of the dorsal tympanic recesses. In *Crocodylus johnstoni*, the *cavum tympanicum proprium* is more medioventrally directed ([Witmer et al., 2008](#)), a condition that is also noted in the caimaninid *Mourasuchus* ([Bona, Degrange & Fernández, 2013](#)). It is worth commenting that the *cavum tympanicum proprium* of *Allodaposuchus hulki* is ventrally connected to a large quadratic sinus ([Fig. 7C](#)).

In fact, the large size of the quadratic sinus is another highlighted feature of *Allodaposuchus*. In *Crocodylus johnstoni*, the quadratic sinus is also located above the *cavum tympanicum proprium* but it is smaller than that of the *A. hulki* and extends posterodorsally to the pharyngotympanic recess ([Witmer et al., 2008](#)). A long and thin siphonial tube (see [Witmer et al., 2008](#): [Fig. 6.6.A-B](#)) runs along the quadrate connecting the quadratic sinus and the *siphonium*. The later connects with the articular recess of the mandible. The siphonial tube is not observed in *A. hulki*, but the place where it was supposed to be is partially occupied by the enlarged quadratic sinus. Thus, we hypothesise that it could be relatively short, extending from the caudal end of the quadratic sinus and the *foramen aëreum* placed near the posterior edge of the quadratic hemicondyle.

The unique cranial pneumaticity configuration observed in *A. hulki*, especially with regard to the paratympanic system (e.g., an anterodorsal tympanic recess and enlarged caudal tympanic recesses) and the enlargement quadratic sinus, suggests some degree of otic specialisation. Although being just a hypothesis, the paratympanic configuration of *A. hulki* could result in a more efficient pressure difference receiver mechanism, which is related to directional hearing ([Bierman et al., 2014](#)). We hope that future studies could shed light on this question.

Forelimb myology and functional morphology

Three types of limb posture are traditionally identified in quadrupedal tetrapods during terrestrial locomotion: sprawling, semi-erected, and erected. Extant crocodylians locomotion ranges from sprawling, in which the limbs are positioned laterally, to a semi-erected high walk, in which limbs are strongly adducted ([Briksnam, 1980](#); [Parish, 1986](#); [Parish, 1987](#); [Gatesy, 1991](#); [Allen et al., 2014](#)), whereas some extinct crocodylomorphs, such as notosuchians, could exhibit the erect posture ([Sertch & Groenke, 2011](#); [Chamero, Buscalioni & Marugán-Lobón, 2013](#); and references therein). However, most of these postures and locomotion inferences are based on anatomical features of the pelvic girdle and hind limbs rather than the pectoral girdle and forelimbs. In addition, the reconstruction of appendicular musculature is also regarded as being increasingly important in understanding locomotion behaviour in fossil vertebrates. Thus, recognising the morphological features in anterior limbs that characterise each type of limb posture is a clue to infer not only locomotion but also the lifestyle of *Allodaposuchus hulki*.

From a morphological point of view, the scapula of *A. hulki* exhibits a robust appearance. It is primarily characterised by having a well-developed anterior process with a wide deltoid crest, a marked scapular buttress, and scapular blade margins flared dorsally. Although no quantitative analyses can be conducted because of the fragmentary nature of the element, the combination of those features is consistent with the general scapular configuration of extant alligatorids and gavialids according to [Brochu \(1997\)](#) and [Chamero, Buscalioni & Marugán-Lobón \(2013\)](#), whereas crocodiles tend to show more slender scapulae with narrow blades. The presence of a prominent scapular buttress has been considered characteristic of upright posture in several terrestrial crocodylomorph taxa, whereas the absence of this trait is characteristic of primarily aquatic ones ([Sertch & Groenke, 2011](#); [Chamero, Buscalioni & Marugán-Lobón, 2013](#)). Although this feature is present in *Allodaposuchus hulki*, it is not as developed as in terrestrial mesoeucrocodylian (e.g., *Simosuchus* or *Araripesuchus*). Thus, it may indicate some degree of upright posture, but not fully erect, or additional bracing of the forelimb. The angular morphology of the glenoid fossa suggests a moderate range of rotation of the humeral head within the glenoid cavity, which also agrees with a non-fully erect posture. Accordingly, sprawling or the semi-erected postures are the most likely terrestrial locomotion model to be inferred in *A. hulki*.

Another important trait of the scapula of *A. hulki* is the presence of several rough surfaces related to muscular attachment. Especially noteworthy are those located in the anterior process of the scapula, such as *M. supracoracoideus intemedius*, *M. supracoracoideus longus*, and *M. coracobrachialis brevis dorsalis*, which occupy relatively more of the surface than in extant crocodylomorph ([Figs. 5A–5C](#); see [Meers, 2003](#)). These muscles are primarily involved in stabilising the shoulder joint, but they are also powerful protractors and adductors of the humerus, and may assist in extension of the forelimb. The *M. deltoideus clavicularis*, another powerful protractor of the humerus, is not specially developed in *A. hulki*, but muscle insertions are strongly marked. As a result, the morphology and myology configuration of the scapula of *A. hulki* seems to point at

a powerful shoulder, with strong protractor/adduction capacities capable of supporting a robust body, keeping it off the ground.

Like the scapula, the humerus has an overall robust aspect, and it could be relatively short (Figs. 5D–5G). Because it lacks both epiphyseal ends, few assessments in regards to the torsion of the shaft or development of the articular parts can be performed. Furthermore, the preserved humerus does not exhibit any distinctive feature in its diaphysis if compared with extant crocodylians. Apart of the wide rough areas related to the *M. scapulohumeralis caudalis*, and the *triceps brachii* muscle complex, the humerus is a nearly smooth (Figs. 5D–5G). The *M. scapulohumeralis caudalis* assists in the elevation of the humerus and its stabilisation within the glenohumeral joint, but also plays an important role in protraction of the humerus. The main function of *triceps brachii* complex is to assist in the flexion of the brachium on the shoulder while extending the antebrachium on the brachium, thus supporting the body off the ground against gravity (Meers, 2003). These muscular features are in line with previous ideas suggesting that *A. hulki* could have robust forelimbs capable of performing powerful protractor movements during terrestrial locomotion.

The ulna is the most distinctive element of the forelimb of *Allodaposuchus hulki*. It is featured by an expanded proximal epiphysis with prominent processes, a shaft compressed mediolaterally with wide grooves located in both medial and lateral sites, and a marked twist of the distal end of the shaft. Overall, the ulna of *A. hulki* resembles those of extant crocodile taxa, but its expanded proximal epiphysis and twisted distal part resemble that of *Simosuchus* and *Sebecus* (Sertch & Groenke, 2011). As previously stated, the most prominent rugosity of the ulna is located in the olecranon process, corresponding to the insertion of *M. triceps brachii* (Figs. 5H and 5I; Meers, 2003; Allen et al., 2014). Less marked are those areas related with the insertion of *M. flexor ulnaris* and *M. pronator quadratus*, although they occupy relatively more surface than in current crocodile taxa (see Meers, 2003). This would mean that *A. hulki* could exhibit powerful muscles related to the flexion and pronation of the antebrachium. The crest placed at the origin of the *M. flexor digitorum longus* also suggests that a complex mechanism is involved in flexion of the wrist. Although characteristics of the appendicular skeleton suggest that *A. hulki* was not suited to a fully erect posture, several features indicate a powerful forelimb capable of performing sprawling and semi-erect postures. Furthermore, the robust configuration of the forelimbs seems to be consistent with a terrestrial lifestyle, or semi-terrestrial, rather than a semi-aquatic one.

The semi-terrestrial lifestyle hypothesis for *Allodaposuchus hulki* is also supported by the high degree of pneumaticity observed in its skull. Although large cranial cavities of *A. hulki*, such as the caudal tympanic recesses and quadrate sinuses, seem to be primarily related to a specialised otic system, they could also play an important role in lightening the weight of the skull like in large non-avian theropods (see Witmer et al., 2008; Witmer & Ridgely, 2009; Witmer & Ridgely, 2010), or other terrestrial vertebrates.

Ecological implications

According to both cranial and postcranial features displayed in *Allodaposuchus hulki*, it could exhibit some kind of terrestrial or semi-terrestrial lifestyle rather than semi-aquatic ones. This interpretation is also supported by paleoenvironmental evidence.

Charophyte fructifications at the Casa Fabà outcrop were found in the grey claystones above the pedogenised channelised sandstone bed belonging to the lower part of the fluvialite 'lower red unit' (Riera *et al.*, 2009). The charophyte assemblage is formed by extremely small gyrogonites of *Microchara cristata* Grambast, *Microchara nana* Vicente & Martín-Closas, *Microchara punctata* Feist & Colombo and *Microchara aff. laevigata* Grambast & Gutiérrez. Most of the samples show well-preserved gyrogonites, suggesting that they belong to an autochthonous assemblage. Charophytes were also found along with gastropod shells and operculi, fragmentary vertebrate remains and slightly eroded eggshells and planktonic foraminifera.

Assemblages formed exclusively by species bearing small gyrogonites (e.g., *M. nana*) have been related to turbid and warm ephemeral ponds usually found in terrigenous floodplains (Vicente *et al.*, 2015). Despite also being common in lacustrine and palustrine environments, the absence of typically lacustrine species in the assemblages suggests that this highly fluctuant and stressed continental environment favours the thriving of these adapted species bearing small gyrogonites.

In addition, no channel or lake deposits have been found near the Casa Fabà site, or at least no closer than 2.5 km away. These evidences, along with anatomical characteristics, may suggest that *Allodaposuchus hulki* could perform relatively large incursions on the earth, moving from place to place, only stopping in ephemeral water bodies looking for food or other resources.

Institutional Abbreviations

MCD Museu de la Conca Dellà, Lleida, Spain.

MZB Museu Zoològic de Barcelona, Barcelona, Spain.

ACKNOWLEDGEMENTS

We thank the staff of Museu de Ciències Naturals de Barcelona for the temporary loan of extant specimens for comparison, Hospital Universitari Mútua de Terrassa for the CT-scanning, the Preparation Division of the ICP for the preparation of the fossils specimens, Sergio Llàcer for the image processing and AM Bravo (Museo Geológico de Madrid, Madrid) and R Gaete (Museu de la Conca Dellà, Spain) for permission to study the fossil material. We also acknowledge Víctor Fondevilla and Eduardo Puértolas for their useful comments.

ADDITIONAL INFORMATION AND DECLARATIONS

Funding

This paper is a contribution to the projects CGL2011-30069-C02-01/BTE and CGL2011-27869 subsidized by the Spanish Ministry of Economy and Competitiveness (MINECO). The research of AB and ÀHL is supported by predoctoral grants (FI-DGR 2013FI_B 01059 and FI-DGR 2012FI_B 01221, respectively) awarded by the Generalitat de Catalunya (Catalan Government), whereas AV is granted by the Spanish Ministry of Economy and Competitiveness (BES-2012-057837). The funders had no role in study design, data collection and analysis, decision to publish, or preparation of the manuscript.

Grant Disclosures

The following grant information was disclosed by the authors:

Spanish Ministry of Economy and Competitiveness (MINECO): CGL2011-30069-C02-01/BTE, CGL2011-27869.

Generalitat de Catalunya (Catalan Government): FI-DGR 2013FI_B 01059, FI-DGR 2012FI_B 01221.

Spanish Ministry of Economy and Competitiveness: BES-2012-057837.

Competing Interests

The authors declare there are no competing interests.

Author Contributions

- Alejandro Blanco and Albert G. Sellés conceived and designed the experiments, performed the experiments, analyzed the data, wrote the paper, prepared figures and/or tables, reviewed drafts of the paper.
- Josep Fortuny performed the experiments, analyzed the data, wrote the paper, prepared figures and/or tables, reviewed drafts of the paper.
- Alba Vicente analyzed the data, wrote the paper.
- Àngel H. Luján prepared figures and/or tables, reviewed drafts of the paper.
- Jordi Alexis García-Marçà wrote the paper.

New Species Registration

The following information was supplied regarding the registration of a newly described species:

Allodaposuchus hulki urn:lsid:zoobank.org:act:267AADFA-AD84-45F4-B195-D08E174559CC.

Supplemental Information

Supplemental information for this article can be found online at <http://dx.doi.org/10.7717/peerj.1171#supplemental-information>.

REFERENCES

- Allen V, Molnar J, Parker W, Pollard A, Nolan G, Hutchinson JR. 2014. Comparative architectural properties of limb muscles in Crocodylidae and Alligatoridae and their relevance to divergent use of asymmetrical gaits in extant Crocodylia. *Journal of Anatomy* 255:569–582 DOI 10.1111/joa.12245.
- Benton MJ, Clark JM. 1988. Archosaur phylogeny and the relationships of Crocodylia. In: Benton MJ, ed. *The phylogeny and classification of the tetrapods*. Oxford: Clarendon Press, 295–338.
- Bierman HS, Thornton JL, Jones HG, Koka K, Young BA, Brandt C, Christensen-Dalsgaard J, Carr CE, Tollin DJ. 2014. Biophysics of directional hearing in the American alligator (*Alligator mississippiensis*). *The Journal of Experimental Biology* 217:1094–1107 DOI 10.1242/jeb.092866.
- Blanco A, Puértolas-Pascual E, Marmi J, Vila B, Sellés AG. 2014. *Allodaposuchus palustris* sp. nov. from the upper Cretaceous of Fumanya (south-eastern Pyrenees, Iberian Peninsula): systematics, palaeoecology and palaeobiogeography of the enigmatic allodaposuchian crocodylians. *PLoS ONE* 12:e115837 DOI 10.1371/journal.pone.0115837.
- Bona P, Degrange FJ, Fernández MS. 2013. Skull Anatomy of the bizarre crocodylian *Mourasuchus nativus* (Alligatoridae, Caimaninae). *The Anatomical Record* 296:227–239 DOI 10.1002/ar.22625.
- Briknam D. 1980. Hind limb step cycle of *Caiman sclerop* and the mechanics of the crocodile tarsus and metatarsus. *Canadian Journal of Zoology* 58:2187–2200 DOI 10.1139/z80-301.
- Brochu CA. 1997. Phylogenetic systematics and taxonomy of Crocodylia. PhD dissertation, University of Texas, Austin.
- Brochu CA. 2011. Phylogenetic relationships of *Necrosuchus ionensis* Simpson, 1937 and the early history of caimanines. *Zoological Journal of the Linnean Society* 163:S228–S256 DOI 10.1111/j.1096-3642.2011.00716.x.
- Buckley GA, Brochu CA, Krause DW, Pol D. 2000. A pug-nosed crocodyliform from the Late Cretaceous of Madagascar. *Nature* 405:941–944 DOI 10.1038/35016061.
- Buscalioni AD, Ortega F, Vasse D. 1997. New crocodiles (Eusuchia: Alligatoridea) from the Upper Cretaceous of Southern Europe. *Comptes Rendus de l'Académie des Sciences de Paris* 325:525–530.
- Buscalioni AD, Ortega F, Weishampel DB, Jianu CM. 2001. A revision of the crocodyliform *Allodaposuchus precedens* from the Upper Cretaceous of the Hațeg Basin, Romania. Its relevance in the phylogeny of Eusuchia. *Journal of Vertebrate Paleontology* 21:74–86 DOI 10.1671/0272-4634(2001)021[0074:AROTCA]2.0.CO;2.
- Chamero B, Buscalioni AD, Marugán-Lobón J. 2013. Pectoral girdle and forelimb variation in extant Crocodylia: the coracoid–humerus pair as an evolutionary module. *Biological Journal of the Linnean Society* 108:600–618 DOI 10.1111/j.1095-8312.2012.02037.x.
- Cope ED. 1861. Recent species of Emydosaurian reptiles represented in the Museum of the Academy. *Proceedings of the Academy of Natural Sciences of Philadelphia* 1860:549–551.
- Cuvier G. 1807. Sur les différentes espèces de crocodiles vivans et sur leurs caractères distinctifs. *Annales Naturel des Museum Histoire Natural de Paris* 10:8–86.
- Daudin FM. 1802. Histoire Naturelle, Générale et Particulière des Reptiles; ouvrage faisant suite à l'Histoire naturelle générale et particulière, composée par Leclerc de Buffon; et rédigée par C.S. In: *Sonnini, membre de plusieurs sociétés savantes*. vol. 2. Paris: F. Dufart, 432.
- Delfino M, Codrea V, Folie A, Dica P, Godefroit P. 2008. A complete skull of *Allodaposuchus precedens* Nopcsa, 1928 (Eusuchia) and a reassessment of the morphology of the

- taxon based on the Romanian remains. *Journal of Vertebrate Paleontology* **28**:111–122 DOI [10.1671/0272-4634\(2008\)28\[111:ACSOAP\]2.0.CO;2](https://doi.org/10.1671/0272-4634(2008)28[111:ACSOAP]2.0.CO;2).
- Díez-Canseco D, Arz JA, Díaz-Molina M, Arenillas L. 2014.** Tidal influence in redbeds: a palaeoenvironmental and biochronostratigraphic reconstruction of the Lower Tresp Formation (South-Central Pyrenees, Spain) around the Cretaceous/Paleogene boundary. *Sedimentary Geology* **312**:31–49 DOI [10.1016/j.sedgeo.2014.06.008](https://doi.org/10.1016/j.sedgeo.2014.06.008).
- Dollo L. 1883.** Première note sur les crocodiliens de Bernissart. *Bulletin du Musée Royal d'Histoire Naturelle de Belgique* **2**:309–338.
- Dufeu DL, Witmer LM. 2007.** Ontogeny and phylogeny of the tympanic pneumatic system of crocodyliform archosaurs. In: *67th annual meeting society of vertebrate, Austin*. Abstract Volume, p. 70A.
- Fernández MS, Carabajal AP, Gasparini Z, Chong Díaz G. 2011.** A metriorhynchid crocodyliform braincase from northern Chile. *Journal of Vertebrate Paleontology* **31**(2):369–377 DOI [10.1080/02724634.2011.550361](https://doi.org/10.1080/02724634.2011.550361).
- Gaete R, Riera V, Galobart À, Marmi J, Oms O. 2009.** Tresp Syncline. *Fundamental!* **14**:51–58.
- Gasparini Z. 1985.** Un Nuevo cocodrilo (Eusuchia) Cenozoico de América del Sur. *MME-DNPM servicio de Geología, Paleontología y Estratigrafía* **2**:51–53.
- Gatesy SM. 1991.** Hind limb movements of the American alligator (*Alligator mississippiensis*) and postural grade. *Journal of Zoology* **224**:557–588 DOI [10.1111/j.1469-7998.1991.tb03786.x](https://doi.org/10.1111/j.1469-7998.1991.tb03786.x).
- George ID, Holliday CM. 2013.** Trigeminal nerve morphology in *Alligator mississippiensis* and its significance for crocodyliform facial sensation and evolution. *The Anatomical Record* **296**:670–680 DOI [10.1002/ar.22666](https://doi.org/10.1002/ar.22666).
- Gmelin JF. 1789.** Caroli a Linné. Sistema Naturae per regna tri naturae: secundum classes, ordines, genera, species, cum characteribus, differentiis, synonymis, locis. *Leipzig* **1**(3):1033–1516.
- Goloboff PA, Farris JS, Nixon KC. 2008.** TNT: a free program for phylogenetic analysis. *Cladistics* **24**:774–786 DOI [10.1111/j.1096-0031.2008.00217.x](https://doi.org/10.1111/j.1096-0031.2008.00217.x).
- Hay OP. 1930.** Second bibliography and catalogue of the fossil vertebrata of North America. *Carnegie Institute Washington Publication* **390**(2):1–1074.
- Huxley TH. 1875.** On *Stagonolepis robertsoni*, and on the evolution of the Crocodilia. *The Quarterly Journal of the Geological Society of London* **31**:423–438 DOI [10.1144/GSL.JGS.1875.031.01-04.29](https://doi.org/10.1144/GSL.JGS.1875.031.01-04.29).
- Iordansky NN. 1973.** The skull of the Crocodilia. In: Gans C, Parsons TS, eds. *Biology of the reptilia, Morphology*, vol. 4. London: Academic Press, 201–262.
- Kley NJ, Sertich JJW, Turner AH, Krause DW, O'Connor PM, Georgi JA. 2010.** Craniofacial Morphology of *Simosuchus clarki* (Crocodyliformes: Notosuchia) from the Late Cretaceous of Madagascar. *Journal of Vertebrate Paleontology* **30**(s1):13–98 DOI [10.1080/02724634.2010.532674](https://doi.org/10.1080/02724634.2010.532674).
- Kreff G. 1873.** Remarks on Australian crocodiles, and description of a new species. *Proceedings of the Zoological Society of London* **1873**:334–335.
- Laurent Y, Buffetaut E, Le Loeuff J. 2000.** Un crâne de Thoracosaurine (Crocodylia, Crocodylidae) dans le Maastrichtien supérieur du Sud de la France. *Oryctos* **3**:19–27.
- Laurenti JN. 1768.** *Specimen Medicum, Exhibens Synopsin Reptilium Emendatum Cum Experimentatis Circa Venena et Antiodota Reptilium Austriacorum*. Vienna: JT de Trattner, 214.

- Leidy J. 1852.** Description of a new species of crocodile from the Miocene of Virginia. *Journal of Academy of Natural Sciences of Philadelphia* 2:135–138.
- López-Martínez N, Vicens E. 2012.** A new peculiar dinosaur egg, *Sankofa pyrenaica* oogen. nov. oosp. nov. from the upper Cretaceous coastal deposits of the Aren Formation, South-Central Pyrenees, Lleida, Catalonia, Spain. *Palaeontology* 55(2):325–339
DOI 10.1111/j.1475-4983.2011.01114.x.
- Martin J. 2010.** *Allodaposuchus* (Nopcsa, 1928) (Crocodylia, Eusuchia), from the Late Cretaceous of southern France and its relationships to Alligatoroidea. *Journal of Vertebrate Paleontology* 30(3):756–767 DOI 10.1080/02724631003758318.
- Martin JE, Buffetaut E. 2008.** *Crocodylus affuvelensis* Matheron, 1869 from the Late Cretaceous of southern France: a reassessment. *Zoological Journal of the Linnean Society* 152:567–580
DOI 10.1111/j.1096-3642.2007.00358.x.
- Meers MB. 2003.** Crocodylian forelimb musculature and its relevance to Archosauria. *The Anatomical Record* 274A(2):891–916 DOI 10.1002/ar.a.10097.
- Mook C. 1921.** Notes on the postcranial skeleton in the Crocodylia. *Bulletin of the American Museum of the Natural History* XLIV:Article VIII.
- Muñoz JA, Martínez A, Vergés J. 1986.** Thrust sequence in the Spanish eastern Pyrenees. *Journal of Structural Geology* 8:399–405 DOI 10.1016/0191-8141(86)90058-1.
- Narváez I, Ortega F. 2011.** Basal eusuchians and basal alligatoroids from the Upper Cretaceous of Europe. State of the art. In: Pérez-García A, Gascó F, Gasulla JM, Escaso F, eds. *Viajando a Mundos Pretéritos. IX Encuentro de Jóvenes Investigadores en Paleontología*. 75–92.
- Narváez I, Ortega F, Brochu C, Escaso F. 2014.** Re-evaluation of the phylogenetic status of the Eusuchian crocodile *Musturzabalsuchus* from the Late Cretaceous of Spain. In: *Abstracts of papers of the 74th SVP annual meeting*. 194.
- Nopcsa F. 1928.** Paleontological notes on Reptilia. 7. Classification of the Crocodylia. *Geologica Hungarica, Series Palaeontologica* 1:75–84.
- Ősi A, Clarck JM, Weishampel DB. 2007.** First report on a new basal eusuchian crocodyliform with multicusped teeth from the Upper Cretaceous (Santonian) of Hungary. *Neues Jahrbuch für Geologie und Paläontologie Abhandlungen* 243:169–177
DOI 10.1127/0077-7749/2007/0243-0169.
- Owen R. 1874.** Monograph on the fossil Reptilia of the Wealden and Purbeck Formations. VI. *Hylaeochampsia*. *Palaeontographical Society Monographs* 27:1–7.
- Parish JM. 1986.** Locomotor adaptation in the hindlimb and pelvis of Thecodontia. *Hunteria* 1:1–35.
- Parish JM. 1987.** The origin of crocodylian locomotion. *Paleobiology* 13:396–414.
- Pol D, Leardi JM, Lecuona A, Krause M. 2012.** Postcranial anatomy of *Sebecus icaeorhinus* (Crocodyliformes, Sebecidae) from the Eocene of Patagonia. *Journal of Vertebrate Paleontology* 32(2):328–354 DOI 10.1080/02724634.2012.646833.
- Price LI. 1955.** Novos crocodilídeos dos arenitos da Série Bauru. Cretáceo do Estado de Minas Gerais. *Anais da Academia Brasileira de Ciências* 27:487–498.
- Puértolas E, Canudo JI, Cruzado-Caballero P. 2011.** A new crocodylian from the Late Maastrichtian of Spain: implications for the initial radiation of crocodyloids. *PLoS ONE* 6(6):e20011 DOI 10.1371/journal.pone.0020011.
- Puértolas-Pascual E, Canudo JI, Moreno-Azanza M. 2014.** The Eusuchian crocodylomorph *Allodaposuchus subjuniperus* sp. nov., a new species from the latest Cretaceous (upper Maastrichtian) of Spain. *Historical Biology* 26:91–109 DOI 10.1080/08912963.2012.763034.

- Puigdefàbregas C, Souquet P. 1986.** Tectosedimentary cycles and depositional sequences of the Mesozoic and Tertiary from the Pyrenees. *Tectonophysics* **129**:173–203 DOI [10.1016/0040-1951\(86\)90251-9](https://doi.org/10.1016/0040-1951(86)90251-9).
- Riera V, Oms O, Gaete R, Galobart À. 2009.** The end-Cretaceous dinosaur succession in Europe: the Tremp Basin record (Spain). *Palaeogeography, Palaeoclimatology, Palaeoecology* **283**:160–171 DOI [10.1016/j.palaeo.2009.09.018](https://doi.org/10.1016/j.palaeo.2009.09.018).
- Rosell J, Linares R, Llompart C. 2001.** El Garumniense prepirenaico. *Revista de la Sociedad Geológica de España* **14**:47–56.
- Salisbury SW, Molnar RE, Frey E, Willis PMA. 2006.** The origin of modern crocodyliforms: new evidence from the Cretaceous of Australia. *Proceedings of the Royal Society of London, Serie B* **273**:2439–2448 DOI [10.1098/rspb.2006.3613](https://doi.org/10.1098/rspb.2006.3613).
- Sereno PC, Larsson HCE. 2009.** Cretaceous Crocodyliforms from the Sahara. *ZooKeys* **28**:1–143 DOI [10.3897/zookeys.28.325](https://doi.org/10.3897/zookeys.28.325).
- Sereno PC, Sidor CA, Larsson HCE, Gado B. 2003.** A new notosuchian from the Early Cretaceous of Niger. *Journal of Vertebrate Paleontology* **23**:477–482 DOI [10.1671/0272-4634\(2003\)023\[0477:ANNFTE\]2.0.CO;2](https://doi.org/10.1671/0272-4634(2003)023[0477:ANNFTE]2.0.CO;2).
- Sertch JJW, Groenke JR. 2011.** Appendicular skeleton of *Simosuchus clarki* (Crocodyliformes: Notosuchia) from the Late Cretaceous of Madagascar. *Journal of Vertebrate Paleontology* **6**:122–153 DOI [10.1080/02724634.2010.516902](https://doi.org/10.1080/02724634.2010.516902).
- Simpson GG. 1937.** An ancient eusuchian crocodile from Patagonia. *American Museum Novitates* **965**:1–20.
- Vicente A, Martín-Closas C, Arz JA, Oms O. 2015.** Maastrichtian—basal Paleocene charophyte biozonation and its calibration to the Global Polarity Time Scale in the Southern Pyrenees (Catalonia, Spain). *Cretaceous Research* **52**:268–285 DOI [10.1016/j.cretres.2014.10.004](https://doi.org/10.1016/j.cretres.2014.10.004).
- Wharton DS. 2000.** An enlarged endocranial venous system in *Steneosaurus pictaviensis* (Crocodylia: Thalattosuchia) from the Upper Jurassic of Les Lourdines, France. *Comptes Rendus de l'Académie des Sciences de Paris* **331**:221–226 DOI [10.1016/S1251-8050\(00\)01397-5](https://doi.org/10.1016/S1251-8050(00)01397-5).
- Witmer LM, Ridgely RC. 2008.** The paranasal air sinuses of predatory and armoured dinosaurs (Archosauria: Theropoda and Ankylosauria) and their contribution to cephalic architecture. *Anatomical Record* **291**:1362–1388 DOI [10.1002/ar.20794](https://doi.org/10.1002/ar.20794).
- Witmer LM, Ridgely RC. 2009.** New insights into the brain, braincase, and ear region of *Tyrannosaurs* (Dinosauria, Theropoda), with implications for sensory organization and behaviour. *The Anatomical Record* **292**:1266–1296 DOI [10.1002/ar.20983](https://doi.org/10.1002/ar.20983).
- Witmer LM, Ridgely RC. 2010.** The Cleveland tyrannosaur skull (*Nanotyrannus* or *Tyrannosaurus*): new findings based on CT scanning, with special reference to the braincase. *Kirtlandia. The Cleveland Museum of Natural History* **57**:61–81.
- Witmer LM, Ridgely RC, Dufeu DL, Semones MC. 2008.** Using CT to peer into the past: 3D visualisation of the brain and ear regions of birds, crocodiles, and non-avian dinosaurs. In: Endo H, Frey R, eds. *Anatomical imaging: towards a new morphology*. Tokyo: Springer-Verlag, 67–88.