

DOI: 10.1038/s41467-018-06613-3

OPEN

Publisher Correction: Exosomes maintain cellular homeostasis by excreting harmful DNA from cells

Akiko Takahashi¹, Ryo Okada¹, Koji Nagao², Yuka Kawamata¹, Aki Hanyu¹, Shin Yoshimoto^{1,3}, Masaki Takasugi⁴, Sugiko Watanabe⁴, Masato T. Kanemaki^{5,6}, Chikashi Obuse² & Eiji Hara^{1,4,7}

Correction to: *Nature Communications*; <https://doi.org/10.1038/ncomms15287>; published online 16 May 2017.

This Article contains errors in Fig. 4. In panel d, the lanes of the western blot should have been labeled '1.05', '1.06', '1.09', '1.11', '1.13', '1.16', '1.19', '1.22', '1.24', '1.25'. The correct version of Fig. 4 appears below.

Published online: 08 October 2018



Open Access This article is licensed under a Creative Commons Attribution 4.0 International License, which permits use, sharing, adaptation, distribution and reproduction in any medium or format, as long as you give appropriate credit to the original author(s) and the source, provide a link to the Creative Commons license, and indicate if changes were made. The images or other third party material in this article are included in the article's Creative Commons license, unless indicated otherwise in a credit line to the material. If material is not included in the article's Creative Commons license and your intended use is not permitted by statutory regulation or exceeds the permitted use, you will need to obtain permission directly from the copyright holder. To view a copy of this license, visit <http://creativecommons.org/licenses/by/4.0/>.

© The Author(s) 2018

¹The Cancer Institute, Japanese Foundation for Cancer Research (JFCR), Koto-ku, Tokyo 135-8550, Japan. ²Graduate School of Life Science, Hokkaido University, Sapporo, Hokkaido 001-0021, Japan. ³LSI Medience Corporation, Chiyoda-ku, Tokyo 101-8517, Japan. ⁴Department of Molecular Microbiology, Research Institute for Microbial Diseases (RIMD), Osaka University, Suita, Osaka 565-0871, Japan. ⁵Division of Molecular Cell Engineering, Department of Genetics, National Institute of Genetics, ROIS, SOKENDAI, Mishima, Shizuoka 411-8540, Japan. ⁶PRESTO, Japan Science and Technology Agency (JST), Kawaguchi, Saitama 332-0012, Japan. ⁷CREST, Japan Agency for Medical Research and Development (AMED), Chiyoda-ku, Tokyo 100-0004, Japan. Correspondence and requests for materials should be addressed to A.T. (email: akiko.takahashi@jfcr.or.jp) or to E.H. (email: ehara@biken.osaka-u.ac.jp)

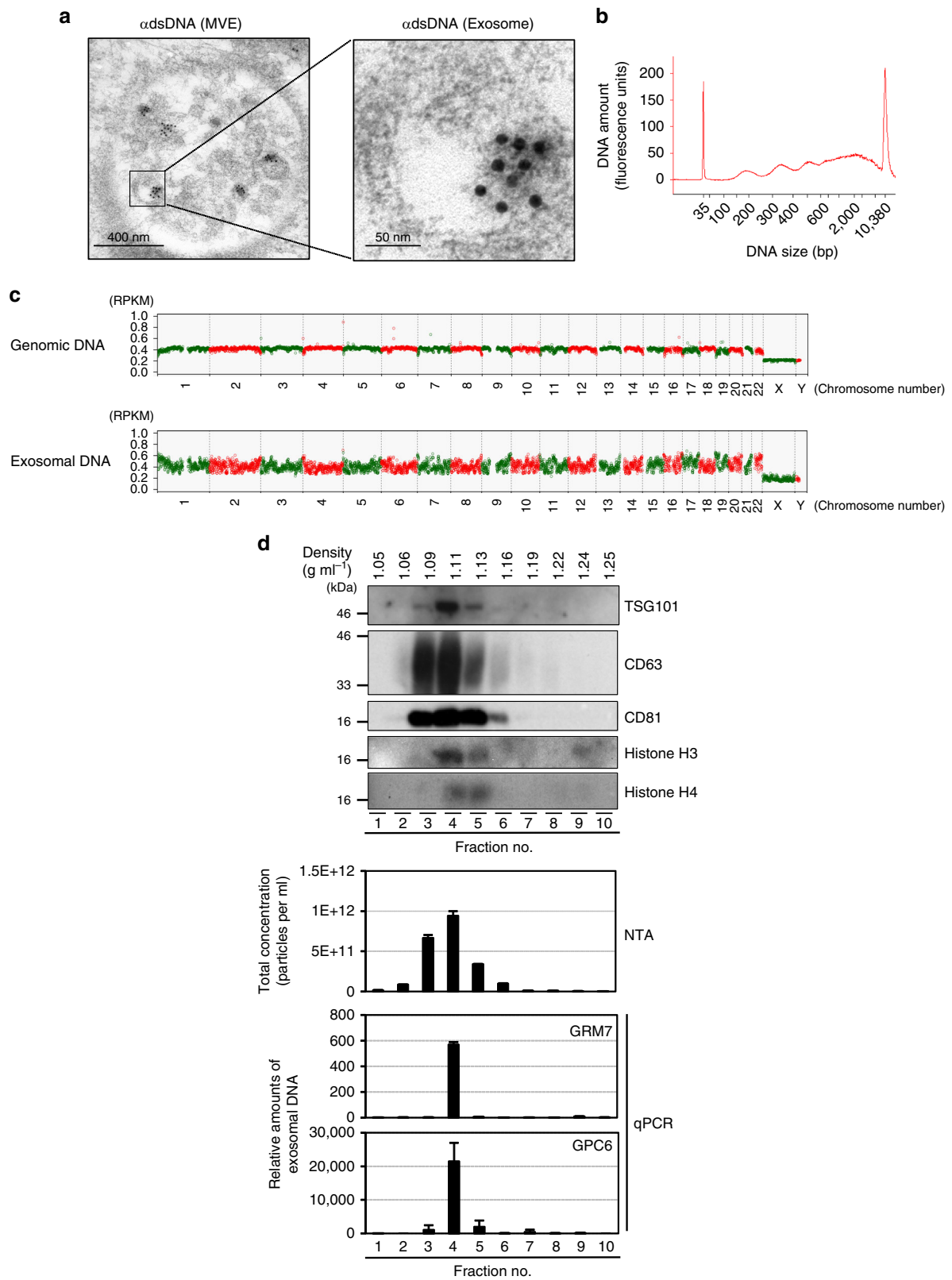


Fig. 4 ■