

RESEARCH ARTICLE

Barriers for health care access affects maternal continuum of care utilization in Ethiopia; spatial analysis and generalized estimating equation

Tesfa Sewunet Alamneh^{1*}, Achamyelch Birhanu Teshale¹, Yigizie Yeshaw^{1,2}, Adugnaw Zeleke Alem¹, Hiwotie Getaneh Ayalew³, Alemneh Mekuriaw Liyew¹, Zemenu Tadesse Tessema¹, Getayeneh Antehunegn Tesema¹, Misganaw Gebrie Worku⁴

1 Department of Epidemiology and Biostatistics, Institute of Public Health, College of Medicine and Health Sciences, University of Gondar, Gondar, Ethiopia, **2** Department of Physiology, School of Medicine, College of Medicine and Health Sciences, University of Gondar, Gondar, Ethiopia, **3** Department of midwifery, school of nursing and midwifery, college of medicine and health sciences, Wollo University, Dessie, Ethiopia, **4** Department of Human Anatomy, University of Gondar, College of Medicine and Health Science, School of Medicine, Gondar, Ethiopia

* tesfasewunet23@gmail.com



OPEN ACCESS

Citation: Alamneh TS, Teshale AB, Yeshaw Y, Alem AZ, Ayalew HG, Liyew AM, et al. (2022) Barriers for health care access affects maternal continuum of care utilization in Ethiopia; spatial analysis and generalized estimating equation. PLoS ONE 17(4): e0266490. <https://doi.org/10.1371/journal.pone.0266490>

Editor: Sanjay Kumar Singh Patel, Konkuk University, REPUBLIC OF KOREA

Received: December 18, 2021

Accepted: March 21, 2022

Published: April 22, 2022

Peer Review History: PLOS recognizes the benefits of transparency in the peer review process; therefore, we enable the publication of all of the content of peer review and author responses alongside final, published articles. The editorial history of this article is available here: <https://doi.org/10.1371/journal.pone.0266490>

Copyright: © 2022 Alamneh et al. This is an open access article distributed under the terms of the [Creative Commons Attribution License](https://creativecommons.org/licenses/by/4.0/), which permits unrestricted use, distribution, and reproduction in any medium, provided the original author and source are credited.

Data Availability Statement: Data cannot be shared publicly because of we use third parties DHS data set. Data are available from the measure

Abstract

Background

Although Ethiopia had made a significant change in maternal morbidity and mortality over the past decades, it remains a major public health concern. World Health Organization designed maternal continuum of care to reduce maternal morbidity and mortality. However, majority of the mothers didn't utilize the maternal continuum of care. Therefore, this study aimed to assess the spatial distribution of incomplete utilization of maternal continuum of care and its associated factors in Ethiopia.

Methods

This study was based on 2016 Demographic and Health Survey data of Ethiopia. A total weighted sample of 4,772 reproductive aged women were included. The study used ArcGIS and SaTScan software to explore the spatial distribution of incomplete utilization of maternal continuum of care. Besides, multivariable Generalized Estimating Equation was fitted to identify the associated factors of incomplete utilization of maternal continuum of care using STATA software. Model comparison was made based on Quasi Information Criteria. An adjusted odds ratio with 95% confidence interval of the selected model was reported to identify significantly associated factors of incomplete utilization of maternal continuum of care.

Results

The spatial analysis revealed that incomplete utilization of maternal continuum of care had significant spatial variation across the country. Primary clusters were detected at Somali, North-Eastern part of Oromia, and East part of Southern Nation Nationalities while

DHS website/ www.dhsprogram.com for researchers who meet the criteria for access to confidential data. Furthermore, the researchers can access the birth recode file of EDHS dataset from https://www.dhsprogram.com/data/dataset_admin/login_main.cfm after getting written consent from DHS website. Variables extracted for this analysis were v001 (Cluster variable), v005 (used for generating weighting variable; v0005/1000000), ANC visit, institutional delivery, Post Natal care visit, age of the women, residence, marital status, religion, maternal education, wealth index, currently working, mass media exposure, number of births/parity, contraceptive use, barriers for accessing health care (women reported at least one challenge of health care access (money, distance, companionship, and permission), and wanted pregnancy.

Funding: The author(s) received no specific funding for this work.

Competing interests: The authors have declared that no competing interests exist.

Abbreviations: ANC, Antenatal care; AOR, Adjusted Odds Ratio; CI, Confidence Interval; COR, Crude Odds Ratio; DHS, Demographic and Health Survey; EA, Enumeration Areas; EDHS, Ethiopia Demographic and Health Survey; GEE, Generalized Estimating Equation; ICC, Intra-class Correlation Coefficient; LLR, Log Likelihood Ratio; PNC, Post Natal Care; QIC, Quasi Information Criteria; SNNPR, Southern Nations, Nationalities, and People's Region; WHO, World Health Organization.

secondary clusters were detected in the Central Amhara region. In multivariate GEE, rural residency, secondary education, higher education, Protestant religious follower's, Muslim religious follower's, poorer wealth index, richer wealth index, richest wealth index, currently working, having barriers for accessing health care, and exposure for mass media were significantly associated with incomplete utilization maternal continuum of care.

Conclusion

Incomplete utilization of maternal continuum of care had significant spatial variations in Ethiopia. Residence, wealth index, education, religion, and barriers for health care access, mass media exposure, and currently working were significantly associated with incomplete utilization of maternal continuum of care. Therefore, public health interventions targeted to enhance maternal service utilization and women empowerment in hotspot areas of incomplete utilization of maternal continuum of care are crucial for reducing maternal morbidity and mortality.

Background

Maternal mortality has long been a major public health concern, which is defined as the death of a woman while pregnant or within 42 days of after termination of pregnancy [1]. Globally, an estimated 303,000 women dying each year as a result of pregnancy and child birth-related complications [2]. Of those, 99% were accounted by developing countries including Ethiopia [3]. Although maternal deaths worldwide declined by 44% between 1990 and 2015, the Millennium Development Goal 5a, which was aimed at 75% reduction in maternal mortality, was not achieved [3, 4]. In late 2015, Sustainable Development Goal (SDG) 3 were launched to address universal health coverage or ensure healthy lives and promoting well-being for all at all ages. Reduction of the global Maternal Mortality Rate (MMR) and ending of preventable deaths of newborns and under 5 years of age children are the particular focus in SDG 3 [5]. Thus, maternal continuum of care is a key tool to achieve the SDG 3 global targets [6, 7]. Despite Ethiopia had made significant change in reducing maternal and child morbidity and mortality over the past decades, maternal and child health problems had remained a major public health problem in the country; 412 maternal deaths per 100,000 live births, 57% had four and above Ante Natal Care (ANC) visit, 53% women hand delivered at home, and 66% women had no postnatal care service.

The finding of previous studies in the globe revealed several factors that are associated with utilization of maternal continuum of care. These include: women age, place of residency, marital status, current working status, religion, wealth index, mass media exposure, distance from the health facility, being informed about pregnancy complications, number of children (parity), and age at first birth [8–17]

Incomplete utilization of maternal continuum of care had also varied across the country. It is high among rural and poor societies. Thus, identification of the areas having incomplete utilization of maternal continuum of care using geographical information system (GIS) and spatial scan statistical analysis (SaTScan) has become an essential to guide focused public health interventions. Besides, previous studies in Ethiopia have been focused on the magnitudes and determinants of utilization of maternal continuum of care using ordinary logistic regression models despite the hierarchical structure of the Ethiopia Demographic and Health Survey

(EDHS) data. Thus, this data had nested effect and violate independent and equal variance assumptions that result in biased estimates. The findings of previous studies were insufficient and limited to capture the spatial distribution of incomplete utilization of maternal continuum of care. Therefore, this study aimed to investigate the spatial distribution and associated factors of incomplete utilization of maternal continuum of care among reproductive aged women in Ethiopia using spatial analysis and Generalized Estimating Equations. Conducting this study will help to make decision on maternal health service utilization based on the available evidences. Moreover, the result of this study could support policy makers, clinicians, and programmers to design intervention for achieving the targeted SDG 3.

Methods and materials

Study design, setting and period

The present study used 2016 EDHS data. The survey was collected every 5 years to assess population and health indicators at the national and regional levels using a structured, validated, and standardized questionnaire. It was also conducted for four times in Ethiopia. Hence, the 2016 EDHS is the latest and the fourth survey conducted in the country. Ethiopia is an East African country with an estimated population of 109.2 million that makes second most populous country in Africa [18]. Ethiopia is federally decentralized in to nine regions and two city administrations and the regions are further divided into zones, and zones into administrative units called districts [19]. The district again subdivided into kebele which is the lowest administrative unit. Regarding to the health care system in Ethiopia, the fourth health sector development plan introduced a three-tier health-service delivery system. This system were arranged by including Primary health care unities (i.e. health posts and health centers) and primary hospitals at primary level, general hospitals at secondary level, and specialized hospitals at tertiary level [20].

Study population and sampling technique

All reproductive aged women who were booked for ANC service and giving birth within 5 years preceding the 2016 survey in Ethiopia were the source population, while all reproductive aged women who were booked for ANC service and giving birth in the selected Enumeration Areas (EAs) within 5 years before the 2016 survey were the study population. The most recent birth characteristics was used for those who give more than one birth within five years preceding the survey. A two stage stratified cluster sampling technique were employed to select study participants. Stratification of regions into urban and rural areas were considered. In the first stage, 645 EAs (202 from urban area) were selected using probability sampling proportional to the EAs size and with independent selection in each sampling stratum. In the second stage, 28 households from each cluster were selected with an equal probability of selection from the household listing [21]. A total of 4,772 weighted reproductive aged women were included in the study.

Measurement of variables

The response variable for this study was maternal continuum of care. Maternal continuum of care is a series of cares provided for mothers during the three periods of maternity [11, 17]. It is a composite variable obtained from ANC, institutional delivery, and Post Natal care (PNC) services. The response variable for the i^{th} mother from j^{th} cluster (EAs) was represented by a random variable Y_{ij} , with two possible values coded as 1 and 0. The outcome variable of the i^{th} mother in the j^{th} cluster (Y_{ij}) = 1 if i^{th} mother had incomplete maternal continuum of care

or if the women had not utilize one of the three maternity services (i.e. 4 and above ANC visits, institutional delivery or postnatal checkup) and $Y_{ij} = 0$ if the mother had complete continuum of maternal care (if the women's had utilize all the three maternity services).

Age of the women, residence, marital status, religion, maternal education, wealth index, currently working, mass media exposure, number of births/parity, contraceptive use, barriers for accessing health care (women reported at least one challenge of health care access (money, distance, companionship, and permission) considered as having barriers of for accessing health care while if a woman didn't report none of the above challenges were considered as no barriers for accessing health care) [22], wanted pregnancy were included as independent variables.

Data management and statistical analysis

After accessing the data, the variables of the study were extracted from birth recorded data set of EDHS data, data cleaning, and recoding were conducted in STATA version 14.1. The data were weighted using sampling weight and complex survey design was used to adjust for unequal probability of selection due to the sampling design employed in EDHS data.

Spatial analysis

The spatial analysis was done using ArcGIS V.10.7 and SaTScan V.9.6 software. These study conducts the spatial autocorrelation, hot spot analysis, spatial interpolation, and SaTScan analysis of incomplete utilization of maternal continuum of care.

Spatial autocorrelation analysis

Spatial autocorrelation was conducted to test whether the spatial distribution of incomplete utilization of maternal continuum of care was randomly distributed or not. The Global Moran's I statistics which ranges from -1 to $+1$ was used to measure whether the distribution of incomplete utilization of maternal continuum of care was dispersed, random, or clustered in the study area [23]. The statistic values close to -1 indicate spatial distribution of incomplete utilization of maternal continuum of care is dispersed, a statistic close to value 0 indicates incomplete utilization of maternal continuum of care is randomly distributed, and a statistic close to $+1$ means the spatial distribution of incomplete utilization of maternal continuum of care was clustered [24].

Hotspot analysis

Getis-Ord G_i^* statistics was used to identify areas with higher rates of incomplete utilization of maternal continuum of care (significant hot spots areas), and areas with lower rates of incomplete utilization of maternal continuum of care (cold spot areas) [25].

To assess the presence of statistically significant spatial clusters of incomplete utilization of maternal continuum of care, Bernoulli based spatial scan statistical analysis with circular window was done. Women with incomplete utilization of maternal continuum of care were taken as cases and women with complete utilization of maternal continuum of care was taken as controls to fit the Bernoulli based model. The default maximum spatial cluster size of less than 50% of the population was used as an upper limit for the identification of both small and large clusters. Log Likelihood Ratio (LLR) test was used to the significance of the clusters and the 999 Monte Carlo replications were used to calculate p values and to rank using their LLR test. Finally, the primary cluster was chosen as the spatial window when it has greatest LLR test [26].

Spatial interpolation

To predict incomplete utilization maternal continuum of care in unsampled areas in the country based on the data in sampled clusters /EA, spatial interpolation technique was employed. Although various spatial interpolation techniques are available, this study used an Empirical Bayesian Kriging (EBK) technique which are considered the best methods since it incorporates spatial autocorrelation and statistically optimize the weight [27].

Associated factors of incomplete utilization of maternal continuum of cares

In the EDHS data, women are nested within a cluster/EAs and those who reside within the same clusters have similar characteristics compared to those from another clusters. This violates the independence and equal variance assumptions of the ordinary logistic regression model. Thus, Intra-class Correlation Coefficient (ICC) was computed to measure the variability between clusters after fitting a model without any covariate. It quantifies the degree of heterogeneity of incomplete utilization of maternal continuum care between clusters (the proportion of variance explained by the between cluster variability). It also computed as;

$$ICC = \frac{\sigma_{\mu}^2}{\sigma_{\mu}^2 + \pi^2/3};$$
 Where: the ordinary logit distribution has variance of $\pi^2/3$, σ_{μ}^2 indicates the

cluster variance [28]. The calculated ICC was 36.37%, showed that about 36.37% of the variation in incomplete continuum of care was explained by the between cluster variation. This implies the need to take into account between-cluster variability by using advanced modelling techniques. Therefore, Generalized Estimating Equation (GEE) model was fitted to identify the associated factors of incomplete utilization of maternal continuum of care among reproductive aged women [29]. It is a marginal model that considers working correlation structure among clusters that estimates a robust standard error and also controlled for within-cluster correlations. Generalized Estimating Equation (GEE) model was fitted with a logit link function and binomial family with independent and exchangeable working correlation structures. Quasi Information Criteria (QIC) was used to select the best-fitted model. The model with exchangeable correlation structure was selected as the best fitted model since it had smaller QIC value. Variables with p-value <0.2 in the bi-variable GEE were considered for the multi-variable GEE model. To assess the strength of association between outcome variable and independent factors both crude and adjusted odds ratio with a 95% Confidence Interval (CI) were computed. Variables having less than 5% p-value in the multivariable GEE model were considered as the associated factors with the incomplete utilization of maternal continuum care.

Ethics consideration

This study is a secondary data analysis from the EDHS data, so it does not require ethical approval. For conducting this study, online registration and request for measure DHS were conducted. The dataset was downloaded from DHS on-line archive after getting approval to access the data. Regarding the shape file, online request and registration was done with the following adress <https://africaopendata.org/dataset/ethiopia-shapefiles>. All methods were carried out in accordance with the Declaration of Helsinki.

Results

A total of 4,772 study participants were included in these study. Of them, 252 (5.27%) were teenagers. More than three in four, 3,897 (81.66%) were rural dweller's. Moreover, 2,581

(54.07%) mother was not attending formal education. Regarding accesses to health care services, nearly one in third, 3,336 (69.90%) had barriers for accessing health cares (Table 1).

Magnitudes of maternal continuum of cares

Among the study participants, only 247 (5.17%) had complete maternal continuum of care (i.e. had four and above ANC visit, institutional delivery, and PNC services) (Table 2).

Spatial analysis

Spatial autocorrelation of incomplete utilization of maternal continuum of care. The spatial analysis found that the spatial distribution of incomplete utilization of maternal continuum of care was significantly varied across the country (Global Moran's $I = 0.46$, $p < 0.001$) (Fig 1). The highest prevalence of incomplete utilization of maternal continuum of care was identified in the majority of Tigray, Dire Dawa, Harar, Oromia, and SNNP regions whereas the lowest prevalence of incomplete maternal continuum of care was detected in Afar and Somali regions (Fig 2).

Hotspot analysis of incomplete utilization of maternal continuum care. In hot spot analysis, a significant hot spot clusters of incomplete utilization of maternal continuum of care were identified in South Eastern part of Gambela, Addis Ababa, Central part of Oromia, Dire Dawa, and Harari regions. While significant cold spot areas were in Afar, Eastern part of Amhara, and western part of Oromia region (Fig 3).

A total of 210 significant clusters of incomplete utilization of maternal continuum of care were detected in spatial scan statistical analysis, of them 186 clusters were primary clusters (most likely clusters). The primary cluster spatial window was founded in the Somali, eastern part of Oromia, and south East part of SNNP regions, with geographical location of 4.180558 N and 42.052871 E with a 600.02 km radius, a relative risk of 1.07 and a log likelihood ratio of 39.52 ($p < 0.001$). This revealed that a woman within the spatial window had 1.07 times higher risk of incomplete utilization of maternal continuum care compared to women outside the window (Table 3). The red circular ring contains the primary clusters of incomplete utilization of maternal continuum of care which are the most statistically significant spatial window in LLR test. Moreover, the secondary clusters were identified in the central Amhara region (Fig 4).

Kriging interpolation of incomplete utilization of maternal continuum of care. In the EBK interpolation, high prevalence of incomplete utilization of maternal continuum of care were predicted at Dire Dawa, south western part of Tigray, southern part of SNNP, western part of Benishangul-Gumuz, central and western part of Oromia Whereas, the predicted lowest prevalence of incomplete utilization of maternal continuum of care were detected in the Somali and Afar (Fig 5).

Factors associated with incomplete utilization of maternal continuum of care. In the bi-variable analysis maternal age, ever had terminated pregnancy, and was the pregnancy wanted were not associated with incomplete utilization of maternal continuum of care at a p -value less than 0.2. The multivariable GEE model revealed that variables such as residence, educational level, religion, wealth index, mass media exposure and barriers for health care accesses were significantly associated with incomplete utilization of maternal continuum of care at a 5% level of significance.

This study revealed that the odds off having incomplete utilization of maternal continuum of care were 1.67 (AOR = 1.67, 95%CI; 1.02, 2.74) times higher for rural residents as compared to their counterparts. Educational level was also significantly associated with incomplete utilization of maternal continuum of care with the likelihood of incomplete utilization of maternal

Table 1. Background characteristics of reproductive aged women in Ethiopia, 2016 EDHS.

Variables	Category	Frequency	Proportion(%)
Age	15–19	252	5.27
	20–34	3,481	72.95
	35–49	1,040	21.78
Region	Tigray	486	10.18
	Afar	37	0.77
	Amhara	1,104	23.13
	Oromia	1,608	33.69
	Somali	119	2.48
	Benishangul	56	1.17
	SNNPR	1,115	23.36
	Gambela	16	0.32
	Harari	14	0.28
	Addis Ababa	192	4.02
	Dire Dawa	30	0.61
Residence	Urban	876	18.34
	Rural	3,897	81.66
Educational status	No formal education	2,581	54.07
	Primary	1,577	33.05
	Secondary	388	8.12
	Higher	227	4.76
Religion	Orthodox	2,030	42.54
	Protestant	1,050	21.99
	Muslin	1,573	32.96
	Other	120	2.50
Wealth index	Poorest	795	16.65
	Poorer	936	19.60
	Middle	997	20.88
	Richer	967	20.26
	Richest	1,079	22.61
Terminated pregnancy	No	4,332	90.78
	Yes	440	9.22
Contraceptive use	Non- users	2,774	58.13
	Traditional method	27	0.56
	Modern method	1,971	41.31
Health insurance	No	4,531	94.94
	Yes	242	5.06
Marital status	Single	90	1.87
	Married	4,481	93.91
	Widowed	54	1.12
	Divorced	147	3.10
Currently working	No	3,260	68.30
	Yes	1,513	31.70
Parity	1–4	3,213	67.32
	≥ 5	1,560	32.68
Ever had terminated pregnancy	No	4,332	90.78
	Yes	440	9.22
Wanted pregnancy	Then	3,622	75.91
	Later	826	17.31
	No more	324	6.79

(Continued)

Table 1. (Continued)

Variables	Category	Frequency	Proportion(%)
Mass media exposure	No	3,570	74.82
	Yes	1,202	25.18
Health care access barrier	No barrier	1,437	30.10
	Have barrier	3,336	69.90

<https://doi.org/10.1371/journal.pone.0266490.t001>

Table 2. Frequency distribution of maternal continuum of care among reproductive age women in Ethiopia, 2016 EDHS.

Variable	Category	Utilization of maternal continuum care		
		Complete	Incomplete	p-value
Maternal age	<20	14	236	0.570
	20–34	216	3,216	
	> = 35	73	957	
Residence	Urban	176	1,219	<0.0001
	Rural	127	3,190	
Educational status	No formal education	84	2,256	<0.0001
	Primary	101	1,442	
	secondary	63	458	
	Higher	55	253	
Religion	Orthodox	188	1,668	<0.0001
	Protestant	30	825	
	Muslim	84	1,852	
	Other	1	64	
Wealth index	poorest	20	1,048	<0.0001
	poorer	33	728	
	middle	27	679	
	Richer	40	631	
	Richest	183	1,323	
Contraceptive use	Non-user	148	2,792	<0.0001
	Traditional user	10	34	
	Modern user	145	1,583	
Health insurance use	No	276	4,220	0.001
	Yes	27	189	
Marital status	Single	15	92	0.044
	Married	272	4,083	
	Widowed	4	55	
	Divorced	12	179	
Currently working	No	155	2,985	<0.0001
	Yes	148	1,424	
Ever had terminated pregnancy	No	271	3,990	0.550
	Yes	32	419	
Parity	<5	247	3,047	<0.0001
	> = 5	56	1,362	
Was the pregnancy wanted	Then	244	3,521	0.838
	Later	45	650	
	No more	14	238	
Barriers for accessing health care	no	165	1,536	<0.0001
	Yes	138	2,873	
Mass media exposure	No	136	3,174	<0.0001
	Yes	167	1,235	

<https://doi.org/10.1371/journal.pone.0266490.t002>

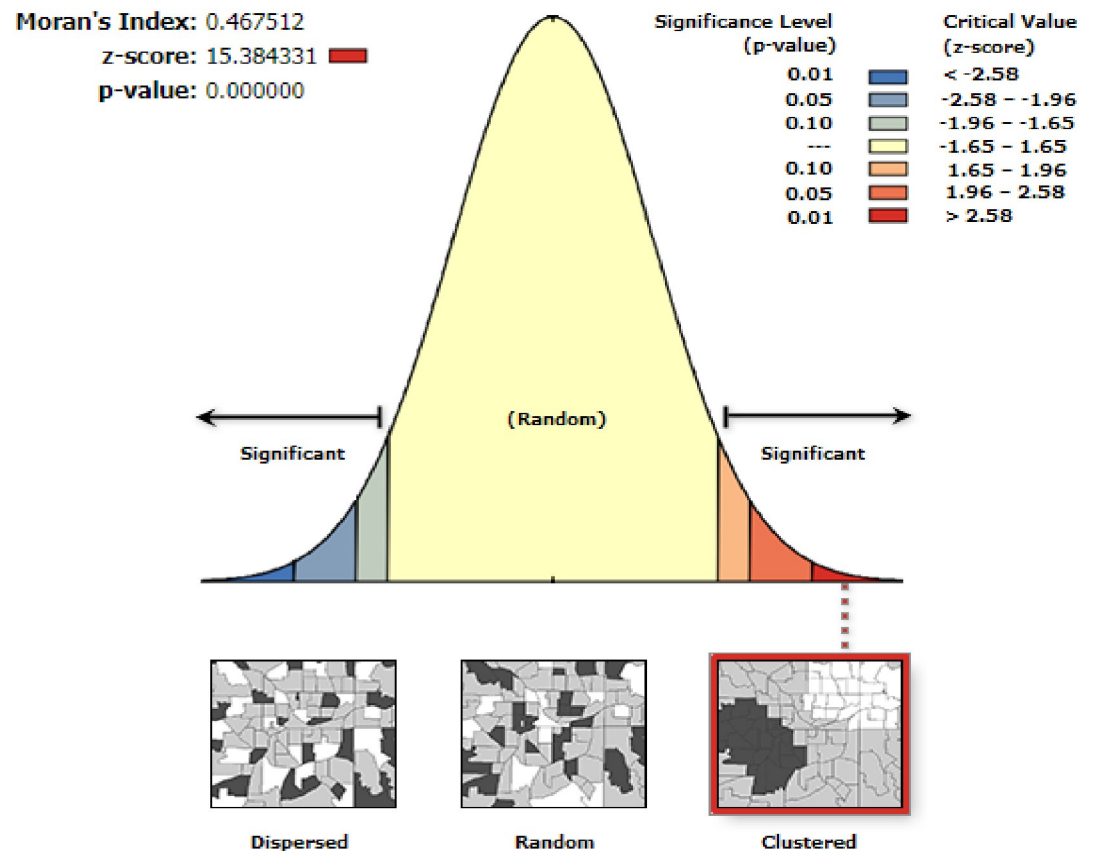


Fig 1. Global spatial autocorrelation of incomplete utilization of maternal continuum of care in Ethiopia, produced using Arc GIS version 10.7.

<https://doi.org/10.1371/journal.pone.0266490.g001>

continuum of care were 43% (AOR = 0.57, 95%CI; 0.37, 0.86) and 52% (AOR = 0.48, 95% CI; 0.30, 0.77) lower for secondary and higher education respectively as compared with reproductive aged women who have no formal education. Moreover, the odds of having incomplete utilization of maternal continuum of care among protestant and Muslim religious followers were 1.93 (AOR = 1.93, 95%CI; 1.25, 2.99) and 1.46 (AOR = 1.46, 95%CI; 1.06, 2.01) times higher as compared to orthodox followers, respectively. In addition, wealth index was significantly associated with incomplete utilization of maternal continuum of care. As compared with poorest reproductive women in their wealth index, the chance of having incomplete utilization of maternal continuum of care was 48% (AOR = 0.52, 95%CI; 0.29, 0.95), 61% (AOR = 0.39, 95%CI; 0.22, 0.72), and 53% (AOR = 0.47, 95%CI; 0.24, 0.92) lower for poorer, richer, and richest respectively. A reproductive aged woman who have barriers for accessing health care had 1.67 (AOR = 1.27, 95%CI; 1.12, 1.67) higher odds of having incomplete utilization of maternal continuum of care as compared with women have no barriers. The likelihood of having incomplete utilization of maternal continuum of care among mass media exposed and currently working women were 25% (AOR = 0.75; 0.55, 0.83) and 28% (AOR = 0.72, 95% CI; 0.56, 0.93) lower as compared to their counterparts, respectively (Table 4).

Discussion

Despite maternal and child mortality had declined overtime, till it is a major public health concern in the world particularly in developing countries like Ethiopia [4, 30]. Though WHO

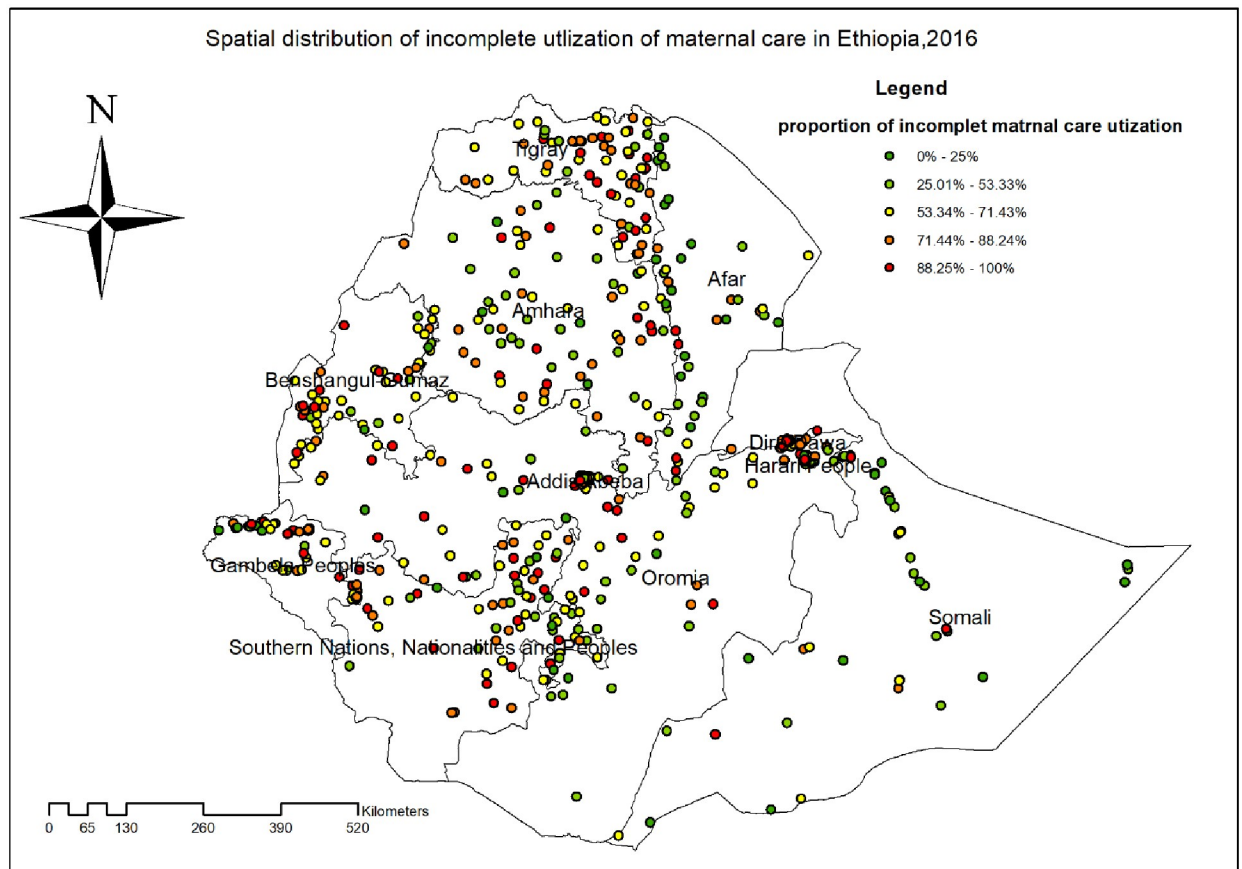


Fig 2. Spatial distribution of incomplete utilization of maternal continuum of care among reproductive aged women in Ethiopia, produced using Arc GIS version 10.7.

<https://doi.org/10.1371/journal.pone.0266490.g002>

adopts continuum of Care as a key strategy to tackle maternal and child morbidity and mortality [31, 32]. Thus, this study aimed at investigating the spatial distribution and associated factors of incomplete utilization of continuum of care in Ethiopia.

This study found that the magnitudes of incomplete utilization of maternal continuum of care was 94.83%. Its magnitudes had shown significant variation across the country. Significant hot spot areas of incomplete utilization of maternal continuum of care was detected in Somali, east Oromia, and south East part of southern nation nationalities and people's, and central Amhara regions of Ethiopia. This could be explained by high dropout rate in maternal continuum of care service utilization in the country specially in the detected hot spot areas [11]. In addition, the areas are more rural, had low exposure for mass media, and had a big problem in accessing health care's that magnifies the dropout rate from complete utilization of maternal continuum of care and creates disparity in the availability and accessibility of maternal health services [33].

In generalized estimating equations, incomplete utilization of maternal continuum of care was significantly affected by different factors. It was founded that the odds of having incomplete utilization of maternal continuum of care among women residing in rural area were higher than in urban areas. This finding was supported by previous studies done in Egypt, Nepal and Cambodia [9, 34, 35]. This could be explained by women's in rural areas had relatively poor healthcare-seeking behavior, had limited accessibility, and availability of health

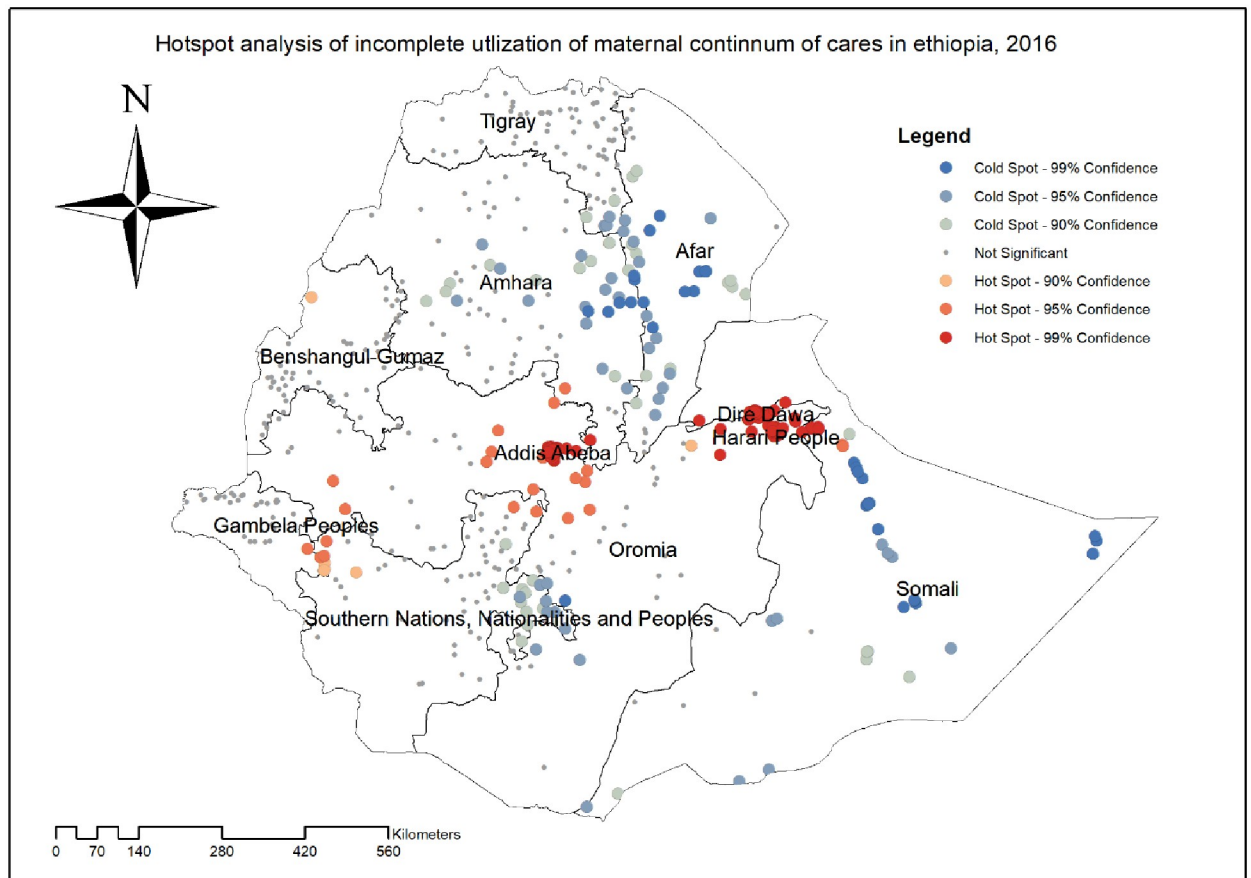


Fig 3. Hot spot analysis of incomplete utilization of maternal continuum of care using Getis Ord Gi* statistics in Ethiopia, produced using Arc GIS version 10.7.

<https://doi.org/10.1371/journal.pone.0266490.g003>

facilities [36, 37]. Besides, women residing in rural areas have limited access for education and low chance of getting health information than women residing in urban areas [38, 39].

This study also revealed that odds of having incomplete utilization of maternal continuum of care was lower for women with secondary and higher education as compared to women’s not attending formal education. This finding was in consistent with studies done at Egypt and Gahan [34, 40]. This might be related with educated women had better access to health facilities, good health seeking behavior, and better awareness on the maternal health services [41, 42]. Moreover, studies also suggested that illiterate women are economically unstable and they may fail to receive adequate maternal health services during pregnancy, delivery and postpartum periods [43].

Table 3. SaTScan result analysis, EDHS 2016.

Cluster / enumeration area identified	Coordinate/radius	Population	Case	RR	LLR	P value
1 (186)	4.18 N, 42.05 E / 600.02 km	1455	1423	1.07	39.52	< 0.0001
2 (24)	11.29 N, 38.41E/ 115.42 km	169	169	1.07	11.69	0.0044
3 (52)	8.45 N, 36.34 E/ 183.04 km	411	402	1.05	9.12	0.050
4 (8)	8.20 N, 34.29/ 32.91 km	61	61	1.07	4.17	0.99
5 (11)	11.34 N, 35.13 E/ 125.55 km	61	61	1.07	4.17	0.99

<https://doi.org/10.1371/journal.pone.0266490.t003>

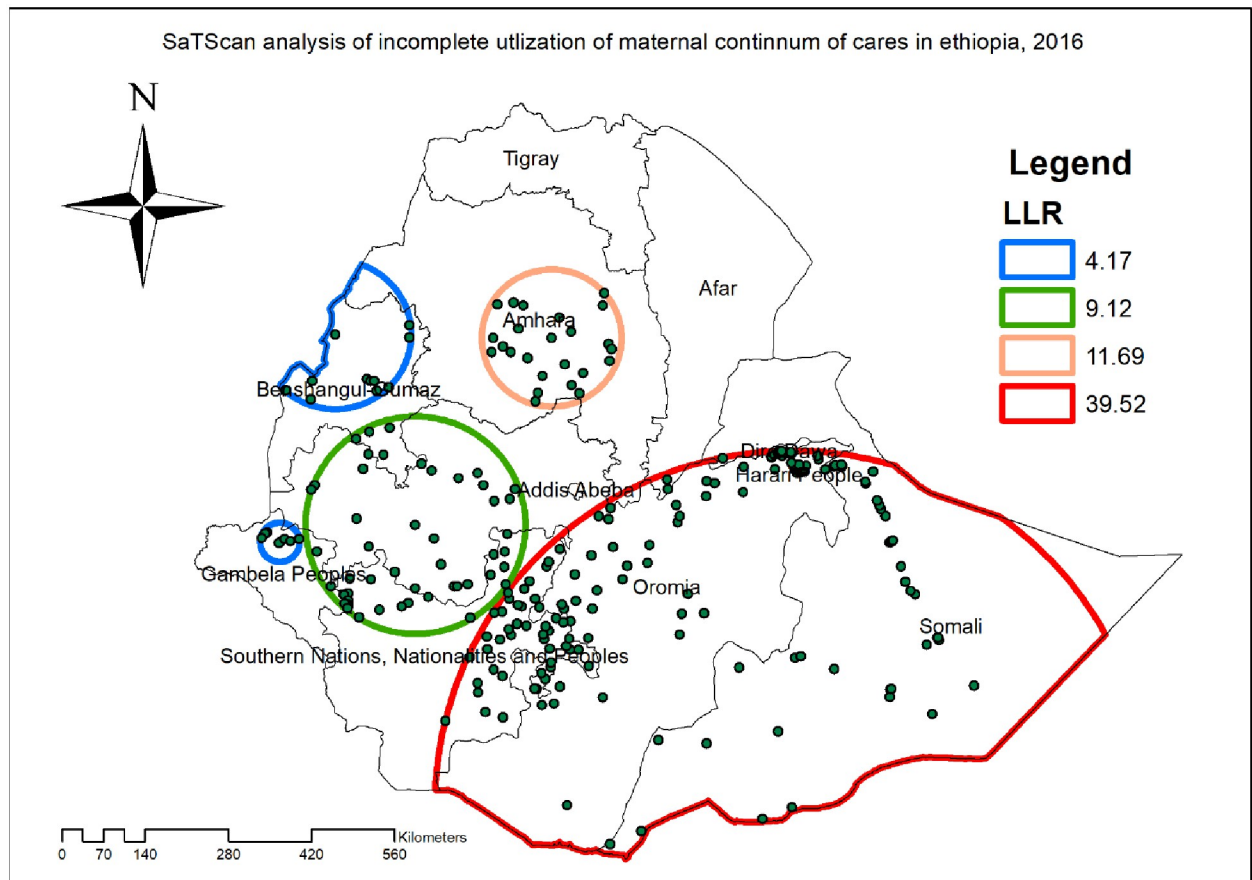


Fig 4. Kriging interpolation of incomplete utilization of maternal continuum of care in Ethiopia, produced using Arc GIS version 10.7.

<https://doi.org/10.1371/journal.pone.0266490.g004>

Wealth index were an independent and significant predictor of utilization of maternal continuum of care. The likelihood of having incomplete utilization of maternal continuum of care was lower for richest, richer and poorer as compared with poorest women. This finding was in agreement with studies conducted in Tanzania, Nigeria, and Ethiopia [11, 15, 44]. The possible explanation for the finding could be that women from better wealth index have better socio-economic status that creates good access for health facilities and enhance the utilization of health services [45]

In consistent with studies done at Egypt and Nepal [34, 35], exposure for mass media lowers the chance of incomplete utilization maternal continuum of care. This could be linked with mass media is an important means of disseminating information concerning maternal health that may increase knowledge, attitude and practice of women towards maternal health service utilization [35]. Besides, women having mass media exposure have better knowledge on danger signs of pregnancy and child birth that drives for utilizing maternal health services [46].

This study identified that barriers for access to health facility was an important and significant factor for incomplete utilization of maternal continuum of care. The odds of having incomplete utilization of maternal continuum of care were higher for women having difficulties for accessing health facilities as compared with their counterparts. This finding was supported in studies conducted in Ethiopia and Nigeria [44, 47]. The possible justification for this finding might be barriers for accessing health facility such as difficulties in obtaining money, long distance travel to health facility, not wanting to go alone may result in difficulty to arrive

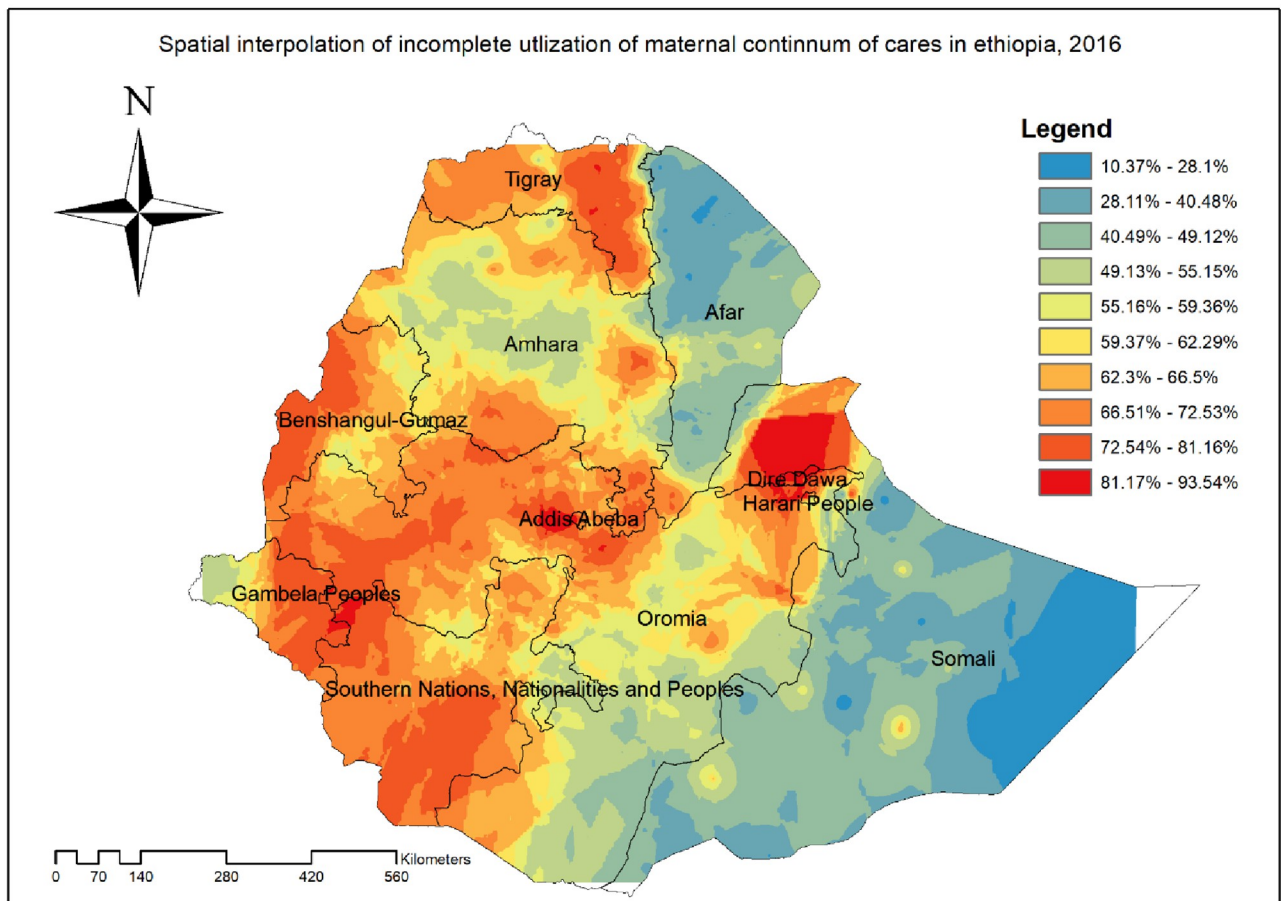


Fig 5. Spatial scan statistical analysis of hotspot areas of incomplete utilization of maternal continuum of care in Ethiopia, produced using Arc GIS version 10.7.

<https://doi.org/10.1371/journal.pone.0266490.g005>

in the health facility which leads to the second delay for maternal mortality [48, 49]. It also imposes an extra cost for transportation as well as lack of availability of transportation and therefore they fail to attain the health facility to utilize maternal health service [50]. As a result, women who have barriers for accessing health cares may become less motivated to seek care compared with their counterparts.

Globally, evidence on the magnitudes and determinants of maternal continuum of care has grown substantially. This information has been used as a preventive measure that is linked to maternal and child health problems. From a policy point of view, the interventions which are designed to enhance to maternal health service utilizations such as dissemination information through mass media, women empowerment by providing education, improving their wealth status and creating opportunities to have their own jobs, and tackling barriers for accessing health service is needed to enable mothers for receiving the full continuum of maternal health services.

This study had both strength and limitations. The major strength of this study was it analyzed nationally representative data using large sample size and appropriate statistical analysis that help to detect the true effect and get reliable estimates and standard errors. Due to this, it could help to develop public health intervention or taking appropriate interventions to increase the utilization of maternal continuum of care. Despite the strengths, the findings of

Table 4. Associated factors of incomplete utilization of maternal continuum of care among reproductive aged women in Ethiopia, 2016.

Variable	Category	COR (95% CI)	AOR (95% CI)
Residence	Urban	1	1
	Rural	3.95 (2.89, 5.40)	1.67 (1.02, 2.74)*
Educational status	No formal education	1	1
	Primary	0.58 (0.43, 0.78)	0.72 (0.52, 1.01)
	secondary	0.31 (0.22, 0.44)	0.57 (0.37, 0.86)*
	Higher	0.20 (0.14, 0.29)	0.48 (0.30, 0.77)*
Religion	Orthodox	1	1
	Protestant	2.52 (1.63, 3.89)	1.93 (1.25, 2.99)*
	Muslim	2.19 (1.61, 2.99)	1.46 (1.06, 2.01)*
	Other	5.28 (0.85, 32.98)	4.30 (0.66, 27.99)
Wealth index	poorest	1	1
	poorer	0.48 (0.27, .86)	0.52 (0.29, 0.95)*
	middle	0.53 (0.29, 0.98)	0.61 (0.32, 1.13)
	Richer	0.30 (0.17, 0.53)	0.39 (0.22, 0.72)*
	Richest	0.15 (0.09, 0.25)	0.47 (0.24, 0.92)*
Contraceptive use	Non-user	1	1
	Traditional user	0.27 (0.12, 0.58)	0.58 (0.27, 1.26)
	Modern user	0.71 (0.56, 0.91)	1.01 (0.78, 1.32)
Health insurance use	No	1	1
	Yes	0.50 (0.32, 0.79)	0.61 (0.40, 1.03)
Marital status	Single	1	1
	Married	2.05 (1.15, 3.68)	1.56 (0.86, 2.83)
	Widowed	2.08 (0.64, 6.73)	1.53(0.46, 5.08)
	Divorced	2.09 (0.93, 4.68)	1.68 (0.74, 3.81)
Currently working	No	1	1
	Yes	0.57 (0.45, 0.72)	0.72 (0.56, 0.93)*
Parity	<5	1	1
	> = 5	1.62 (1.22, 2.15)	0.99 (0.70, 1.39)
Barriers for accessing health care	no	1	1
	Yes	1.98 (1.55, 2.53)	1.27 (1.12, 1.67)*
Mass media exposure	No	1	1
	Yes	0.38 (0.29, 0.49)	0.75 (0.55, 0.83)*

<https://doi.org/10.1371/journal.pone.0266490.t004>

this study need to be viewed in light of the following limitations. Even though relationships have been established, the findings cannot provide information on temporal relationships among the variables that are found to be associated with incomplete utilization of maternal continuum of care due to the cross-sectional nature of the EDHS data. This study might also have affected by social desirability bias and recall bias because the measurement for the main components of maternal continuum of care is self-reported based on women's recall response. Moreover, the study used circular window in the SaTScan analysis which is not able to detect irregular shaped clusters.

Conclusion

In Ethiopia, incomplete utilization of maternal continuum of care had significant spatial variations across the country. Rural residency, Muslim and Protestant religious follower's, and presence of barriers for accessing health care were positively associated with incomplete utilization

of maternal continuum of cares. However, having better wealth index, education, mass media exposure, and being currently working were negatively associated with incomplete utilization of maternal continuum of care. Therefore, public health interventions targeted to enhance maternal service utilization and women empowerment by increasing maternal education awareness on maternal health services, creating job opportunities in hotspot areas of incomplete utilization of maternal continuum of care are crucial for reducing maternal morbidity and mortality in the country.

Acknowledgments

We are grateful to thank the MEASURE DHS program for permitting us to obtain and use the data set for analysis.

Author Contributions

Conceptualization: Tesfa Sewunet Alamneh, Achamyehel Birhanu Teshale, Yigizie Yeshaw, Adugnaw Zeleke Alem, Hiwotie Getaneh Ayalew, Alemneh Mekuriaw Liyew, Zemenu Tadesse Tessema, Getayeneh Antehunegn Tesema, Misganaw Gebrie Worku.

Data curation: Tesfa Sewunet Alamneh, Achamyehel Birhanu Teshale, Yigizie Yeshaw, Adugnaw Zeleke Alem, Hiwotie Getaneh Ayalew, Alemneh Mekuriaw Liyew, Zemenu Tadesse Tessema, Getayeneh Antehunegn Tesema, Misganaw Gebrie Worku.

Formal analysis: Tesfa Sewunet Alamneh, Achamyehel Birhanu Teshale, Yigizie Yeshaw, Adugnaw Zeleke Alem, Hiwotie Getaneh Ayalew, Alemneh Mekuriaw Liyew, Zemenu Tadesse Tessema, Getayeneh Antehunegn Tesema, Misganaw Gebrie Worku.

Methodology: Tesfa Sewunet Alamneh, Achamyehel Birhanu Teshale, Yigizie Yeshaw, Adugnaw Zeleke Alem, Hiwotie Getaneh Ayalew, Alemneh Mekuriaw Liyew, Zemenu Tadesse Tessema, Getayeneh Antehunegn Tesema, Misganaw Gebrie Worku.

Software: Tesfa Sewunet Alamneh.

Supervision: Yigizie Yeshaw.

Writing – original draft: Tesfa Sewunet Alamneh, Achamyehel Birhanu Teshale, Yigizie Yeshaw, Adugnaw Zeleke Alem, Hiwotie Getaneh Ayalew, Alemneh Mekuriaw Liyew, Zemenu Tadesse Tessema, Getayeneh Antehunegn Tesema, Misganaw Gebrie Worku.

Writing – review & editing: Tesfa Sewunet Alamneh, Achamyehel Birhanu Teshale, Yigizie Yeshaw, Adugnaw Zeleke Alem, Hiwotie Getaneh Ayalew, Alemneh Mekuriaw Liyew, Zemenu Tadesse Tessema, Getayeneh Antehunegn Tesema, Misganaw Gebrie Worku.

References

1. Organization WH: **Trends in maternal mortality 2000 to 2017: estimates by WHO, UNICEF, UNFPA, World Bank Group and the United Nations Population Division.** 2019.
2. Jolivet RR, Moran AC, O'Connor M, Chou D, Bhardwaj N, Newby H, R et al: Ending preventable maternal mortality: phase II of a multi-step process to develop a monitoring framework, 2016–2030. *BMC pregnancy and childbirth* 2018, 18(1):1–13. <https://doi.org/10.1186/s12884-017-1633-9> PMID: 29291732
3. Organization WH: *Maternal Mortality: World Health Organization.* 2014.
4. Alkema L, Chou D, Hogan D, Zhang S, Moller A-B, Gemmill A, et al: Global, regional, and national levels and trends in maternal mortality between 1990 and 2015, with scenario-based projections to 2030: a systematic analysis by the UN Maternal Mortality Estimation Inter-Agency Group. *The Lancet* 2016, 387(10017):462–474.

5. Assembly G: Sustainable development goals. *SDGs Transform Our World* 2015, 2030. <https://doi.org/10.1186/s12916-015-0342-3> PMID: 25925656
6. Singh R, Neogi SB, Hazra A, Irani L, Ruducha J, Ahmad D, et al: Utilization of maternal health services and its determinants: a cross-sectional study among women in rural Uttar Pradesh, India. *Journal of health, population and nutrition* 2019, 38(1):1–12. <https://doi.org/10.1186/s41043-019-0173-5> PMID: 31133072
7. Sakuma S, Yasuoka J, Phongluxa K, Jimba M: Determinants of continuum of care for maternal, newborn, and child health services in rural Khammouane, Lao PDR. *PloS one* 2019, 14(4):e0215635. <https://doi.org/10.1371/journal.pone.0215635> PMID: 31013303
8. Singh K, Story WT, Moran AC: Assessing the continuum of care pathway for maternal health in South Asia and sub-Saharan Africa. *Maternal and child health journal* 2016, 20(2):281–289. <https://doi.org/10.1007/s10995-015-1827-6> PMID: 26511130
9. Wang W, Hong R: Levels and determinants of continuum of care for maternal and newborn health in Cambodia-evidence from a population-based survey. *BMC pregnancy and childbirth* 2015, 15(1):1–9. <https://doi.org/10.1186/s12884-015-0497-0> PMID: 25885596
10. Emiru AA, Alene GD, Debelew GT: Women's retention on the continuum of maternal care pathway in west Gojjam zone, Ethiopia: multilevel analysis. *BMC pregnancy and childbirth* 2020, 20:1–14. <https://doi.org/10.1186/s12884-020-02953-5> PMID: 32349687
11. Muluneh AG, Kassa GM, Alemayehu GA, Merid MW: High dropout rate from maternity continuum of care after antenatal care booking and its associated factors among reproductive age women in Ethiopia, Evidence from Demographic and Health Survey 2016. *PloS one* 2020, 15(6):e0234741. <https://doi.org/10.1371/journal.pone.0234741> PMID: 32530948
12. Chaka EE, Parsaeian M, Majdzadeh R: Factors associated with the completion of the continuum of care for maternal, newborn, and child health services in Ethiopia. Multilevel model analysis. *International journal of preventive medicine* 2019, 10.
13. Defar A, Okwaraji YB, Tigabu Z, Persson LÅ, Alemu K: Geographic differences in maternal and child health care utilization in four Ethiopian regions; a cross-sectional study. *International journal for equity in health* 2019, 18(1):1–11. <https://doi.org/10.1186/s12939-018-0897-7> PMID: 30606218
14. Haile D, Kondale M, Andarge E, Tunje A, Fikadu T, Boti N: Level of completion along continuum of care for maternal and newborn health services and factors associated with it among women in Arba Minch Zuria woreda, Gamo zone, Southern Ethiopia: a community based cross-sectional study. *PloS one* 2020, 15(6):e0221670. <https://doi.org/10.1371/journal.pone.0221670> PMID: 32511230
15. Iqbal S, Maqsood S, Zakar R, Zakar MZ, Fischer F: Continuum of care in maternal, newborn and child health in Pakistan: analysis of trends and determinants from 2006 to 2012. *BMC health services research* 2017, 17(1):189. <https://doi.org/10.1186/s12913-017-2111-9> PMID: 28279186
16. Amare NS, Araya BM, Asaye MM: **Dropout from maternity continuum of care and associated factors among women in Debre Markos town, Northwest Ethiopia.** *bioRxiv* 2019:620120.
17. Mohan D, LeFevre AE, George A, Mpembeni R, Bazant E, Rusibamayila N, et al: Analysis of dropout across the continuum of maternal health care in Tanzania: findings from a cross-sectional household survey. *Health policy and planning* 2017, 32(6):791–799. <https://doi.org/10.1093/heapol/czx005> PMID: 28334973
18. **Ethiopia Population.** In: <https://www.worldometersinfo/world-population/ethiopia-population/>.
19. **General Country of Origin Information Report Ethiopia** In.: Directorate for Sub-Saharan Africa; February 2021.
20. MOH E: **Federal Democratic Republic of Ethiopia Ministry of Health Health Sector Development Program IV October 2010 Contents.** *October 2010* 2014.
21. Croft TN, Marshall AM, Allen CK, Arnold F, Assaf S, Balian S: *Guide to DHS statistics.* Rockville: ICF 2018.
22. Macro O: **Central Statistical Agency: Ethiopia demographic and health survey 2005.** *ORC Macro, Calverton, Maryland, USA* 2006.
23. Anselin L, Getis A: Spatial statistical analysis and geographic information systems. *The Annals of Regional Science* 1992, 26(1):19–33.
24. Waldhör T: The spatial autocorrelation coefficient Moran's I under heteroscedasticity. *Statistics in Medicine* 1996, 15(7-9):887–892. [https://doi.org/10.1002/\(sici\)1097-0258\(19960415\)15:7/9<887::aid-sim257>3.0.co;2-e](https://doi.org/10.1002/(sici)1097-0258(19960415)15:7/9<887::aid-sim257>3.0.co;2-e) PMID: 8861157
25. Wieczorek WF, Delmerico AM: Geographic information systems. *Wiley Interdisciplinary Reviews: Computational Statistics* 2009, 1(2):167–186. <https://doi.org/10.1002/wics.21> PMID: 20717487
26. Kuldorff M: SaTScanTM user guide. In.: March; 2018.

27. Bhunia GS, Shit PK, Maiti R: Comparison of GIS-based interpolation methods for spatial distribution of soil organic carbon (SOC). *Journal of the Saudi Society of Agricultural Sciences* 2018, 17(2):114–126.
28. Liu X: **Applied ordinal logistic regression using Stata: From single-level to multilevel modeling**: Sage Publications; 2015.
29. Lipsitz S, Fitzmaurice G, Sinha D, Hevelone N, Hu J, Nguyen LL: One-step generalized estimating equations with large cluster sizes. *Journal of Computational and Graphical Statistics* 2017, 26(3):734–737. <https://doi.org/10.1080/10618600.2017.1321552> PMID: 29422762
30. Estimation UNIGfCM: **Levels & Trends in Child Mortality: Report 2017: Estimates Developed by the UN Inter-Agency Group for Child Mortality Estimation**: United Nations Children's Fund; 2017.
31. Yeji F, Shibanuma A, Oduro A, Debpuur C, Kikuchi K, Owusu-Agei S, et al: Continuum of care in a maternal, newborn and child health program in Ghana: low completion rate and multiple obstacle factors. *PLoS one* 2015, 10(12):e0142849. <https://doi.org/10.1371/journal.pone.0142849> PMID: 26650388
32. Kikuchi K, Ansah EK, Okawa S, Enuameh Y, Yasuoka J, Nanishi K, et al: Effective linkages of continuum of care for improving neonatal, perinatal, and maternal mortality: a systematic review and meta-analysis. *PLoS one* 2015, 10(9):e0139288. <https://doi.org/10.1371/journal.pone.0139288> PMID: 26422685
33. Okwaraji YB, Webb EL, Edmond KM: Barriers in physical access to maternal health services in rural Ethiopia. *BMC health services research* 2015, 15(1):1–8. <https://doi.org/10.1186/s12913-015-1161-0> PMID: 26537884
34. Hamed A, Mohamed E, Sabry M: Egyptian status of continuum of care for maternal, newborn, and child health: Sohag Governorate as an example. *International Journal of Medical Science and Public Health* 2018, 7(6):1.
35. Tamang TM: **Factors associated with completion of continuum of Care for Maternal Health in Nepal**. In: *IUSSP XXVIII International Population Conference, Cape Town, South Africa: 2017*; 2017.
36. Adedini SA, Odimegwu C, Bamiwuye O, Fadeyibi O, Wet ND: Barriers to accessing health care in Nigeria: implications for child survival. *Global health action* 2014, 7(1):23499. <https://doi.org/10.3402/gha.v7.23499> PMID: 24647128
37. Tamirat KS, Tessema ZT, Kebede FB: Factors associated with the perceived barriers of health care access among reproductive-age women in Ethiopia: a secondary data analysis of 2016 Ethiopian demographic and health survey. *BMC Health Services Research* 2020, 20(1):1–8. <https://doi.org/10.1186/s12913-020-05485-y> PMID: 32711517
38. Saxena D, Vangani R, Mavalankar D, Thomsen S: Inequity in maternal health care service utilization in Gujarat: analyses of district-level health survey data. *Global health action* 2013, 6(1):19652. <https://doi.org/10.3402/gha.v6i0.19652> PMID: 23469890
39. Babalola S, Fatusi A: Determinants of use of maternal health services in Nigeria-looking beyond individual and household factors. *BMC pregnancy and childbirth* 2009, 9(1):1–13. <https://doi.org/10.1186/1471-2393-9-43> PMID: 19754941
40. Shibanuma A, Yeji F, Okawa S, Mahama E, Kikuchi K, Narh C, et al: The coverage of continuum of care in maternal, newborn and child health: a cross-sectional study of woman-child pairs in Ghana. *BMJ global health* 2018, 3(4). <https://doi.org/10.1136/bmjgh-2018-000786> PMID: 30233827
41. Shaikh BT, Hatcher J: Health seeking behaviour and health service utilization in Pakistan: challenging the policy makers. *Journal of public health* 2005, 27(1):49–54. <https://doi.org/10.1093/pubmed/fdh207> PMID: 15590705
42. Mainuddin A, Begum HA, Rawal LB, Islam A, Islam SS: Women empowerment and its relation with health seeking behavior in Bangladesh. *Journal of family & reproductive health* 2015, 9(2):65. PMID: 26175761
43. Haque A, Zulfiqar M: Women's economic empowerment through financial literacy, financial attitude and financial wellbeing. *International Journal of Business and Social Science* 2016, 7(3):78–88.
44. Akinyemi JO, Afolabi RF, Awolude OA: Patterns and determinants of dropout from maternity care continuum in Nigeria. *BMC pregnancy and childbirth* 2016, 16(1):1–11. <https://doi.org/10.1186/s12884-016-1083-9> PMID: 27678192
45. McMaughan DJ, Olorunto O, Smith ML: Socioeconomic status and access to healthcare: Interrelated drivers for healthy aging. *Frontiers in Public Health* 2020, 8. <https://doi.org/10.3389/fpubh.2020.00231> PMID: 32626678
46. Wulandari RD, Laksono AD: Determinants of knowledge of pregnancy danger signs in Indonesia. *PLoS One* 2020, 15(5):e0232550. <https://doi.org/10.1371/journal.pone.0232550> PMID: 32433645
47. Atnafu A, Kebede A, Misganaw B, Teshome DF, Biks GA, Demissie GD, et al: Determinants of the Continuum of Maternal Healthcare Services in Northwest Ethiopia: Findings from the Primary Health Care Project. *Journal of Pregnancy* 2020, 2020. <https://doi.org/10.1155/2020/4318197> PMID: 32908704

48. Esscher A, Binder-Finnema P, Bødker B, Högberg U, Mulic-Lutvica A, Essén B: Suboptimal care and maternal mortality among foreign-born women in Sweden: maternal death audit with application of the 'migration three delays' model. *BMC pregnancy and childbirth* 2014, 14(1):1–11. <https://doi.org/10.1186/1471-2393-14-141> PMID: [24725307](https://pubmed.ncbi.nlm.nih.gov/24725307/)
49. Shah N, Hossain N, Shoaib R, Hussain A, Gillani R, Khan NH: Socio-demographic characteristics and the three delays of maternal mortality. *J Coll Physicians Surg Pak* 2009, 19(2):95–98. <https://doi.org/02.2009/JCPSP.9598> PMID: [19208312](https://pubmed.ncbi.nlm.nih.gov/19208312/)
50. Berhan Y, Berhan A: Commentary: reasons for persistently high maternal and perinatal mortalities in Ethiopia: part III—perspective of the “three delays” model. *Ethiopian journal of health sciences* 2014, 24:137–148. PMID: [25489188](https://pubmed.ncbi.nlm.nih.gov/25489188/)