

# Table of contents

Supplementary Fig. 1: Protein coverage distribution. ....2

Supplementary Fig. 2: Coefficients of variation across technical replicates. ....4

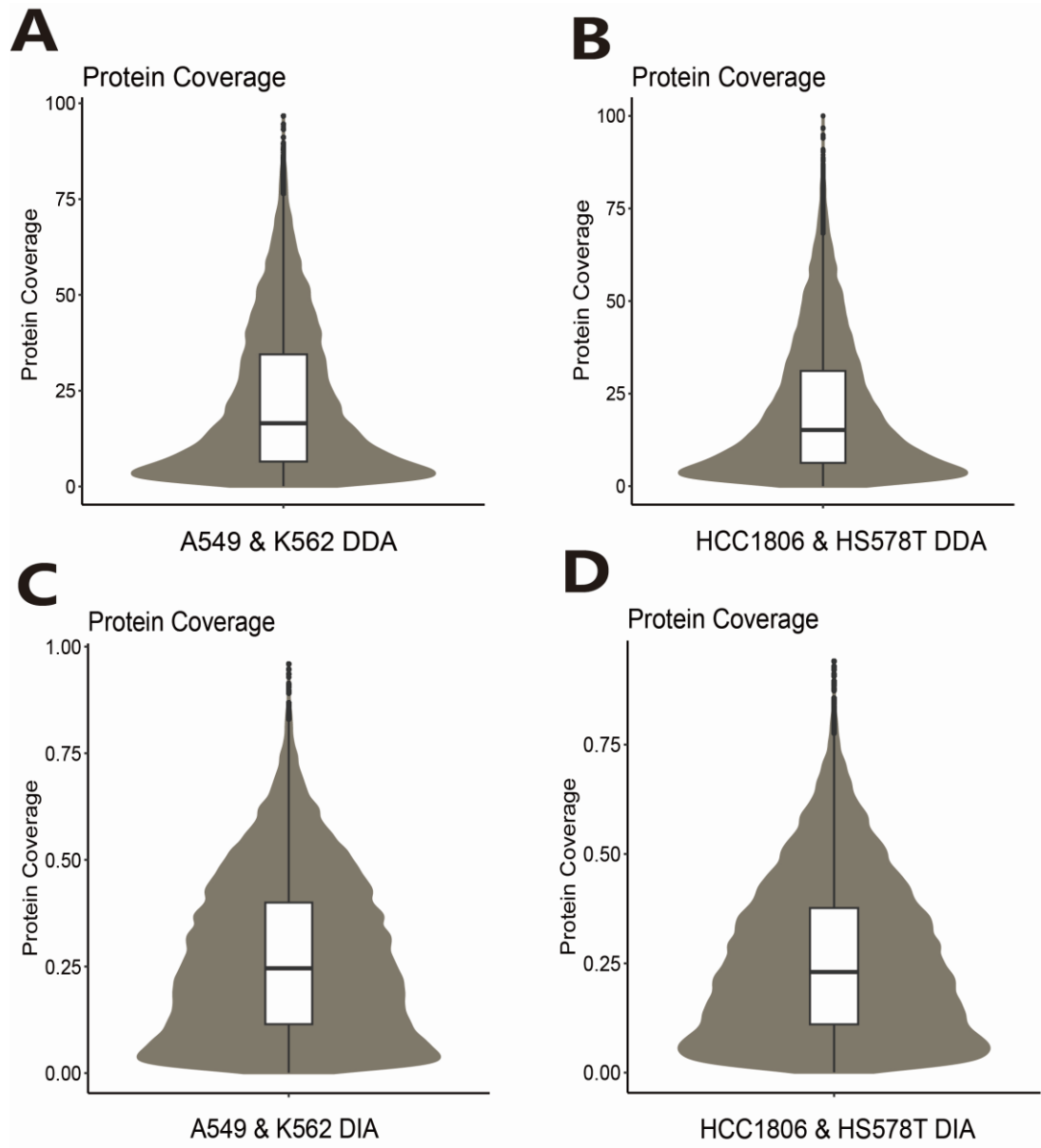
Supplementary Fig. 3: Peptide variability measured by coefficients of variation across all samples. ....5

Supplementary Fig. 4: Relationship between missing proportion and abundance of protein (DDA) or protein group (DIA) measured by Spearman correlation coefficients.....6

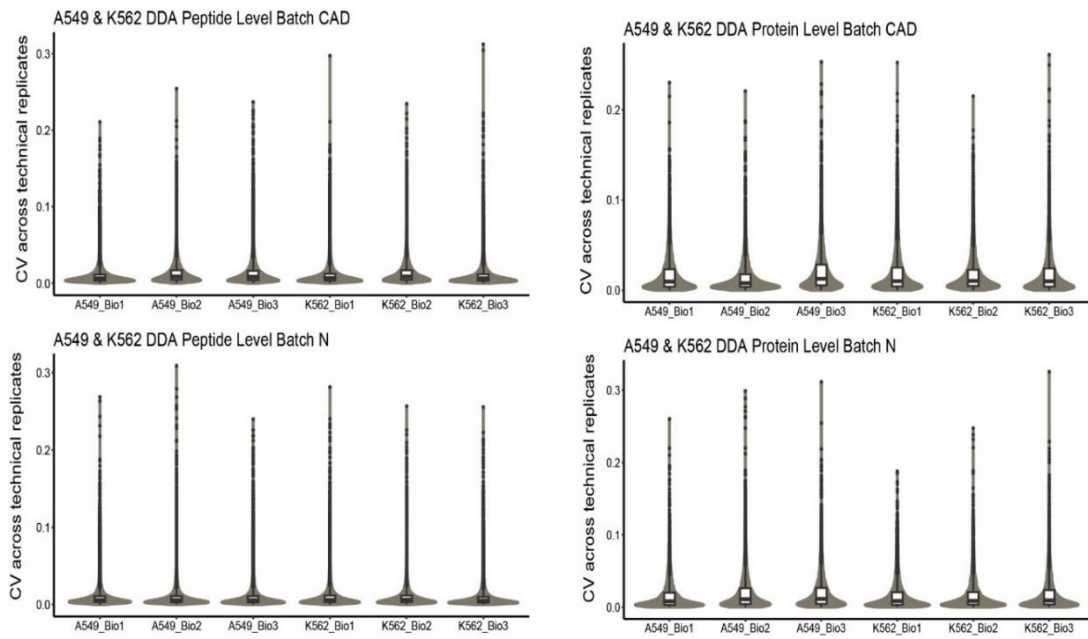
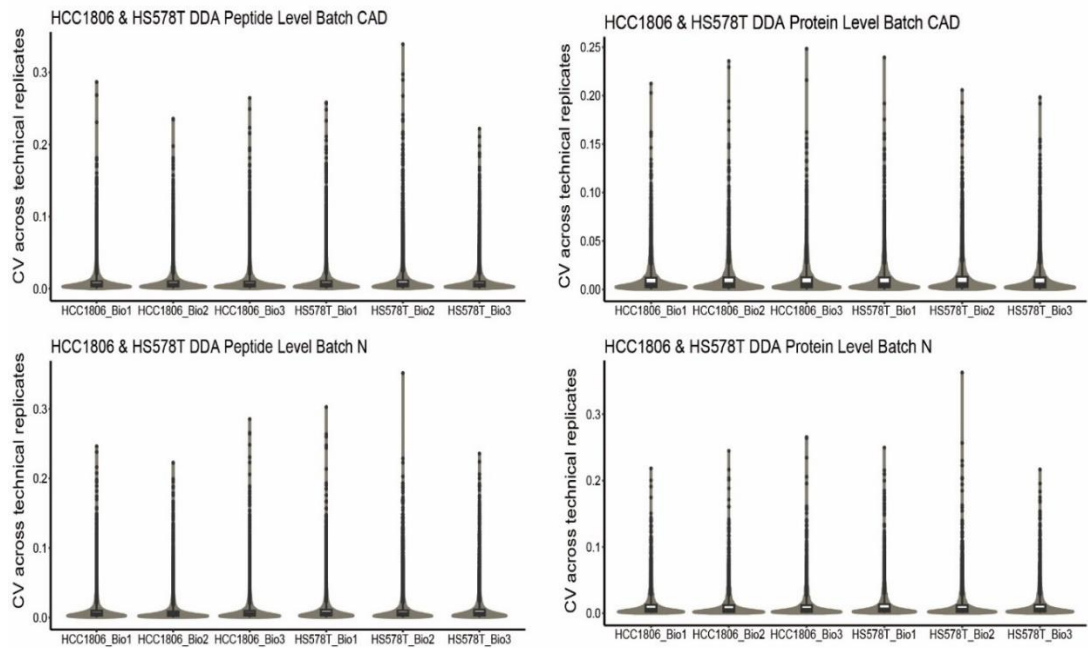
Supplementary Fig. 5: Relationship between missing proportion and abundance of peptide (DDA) or precursor (DIA) measured by Spearman correlation coefficients.....7

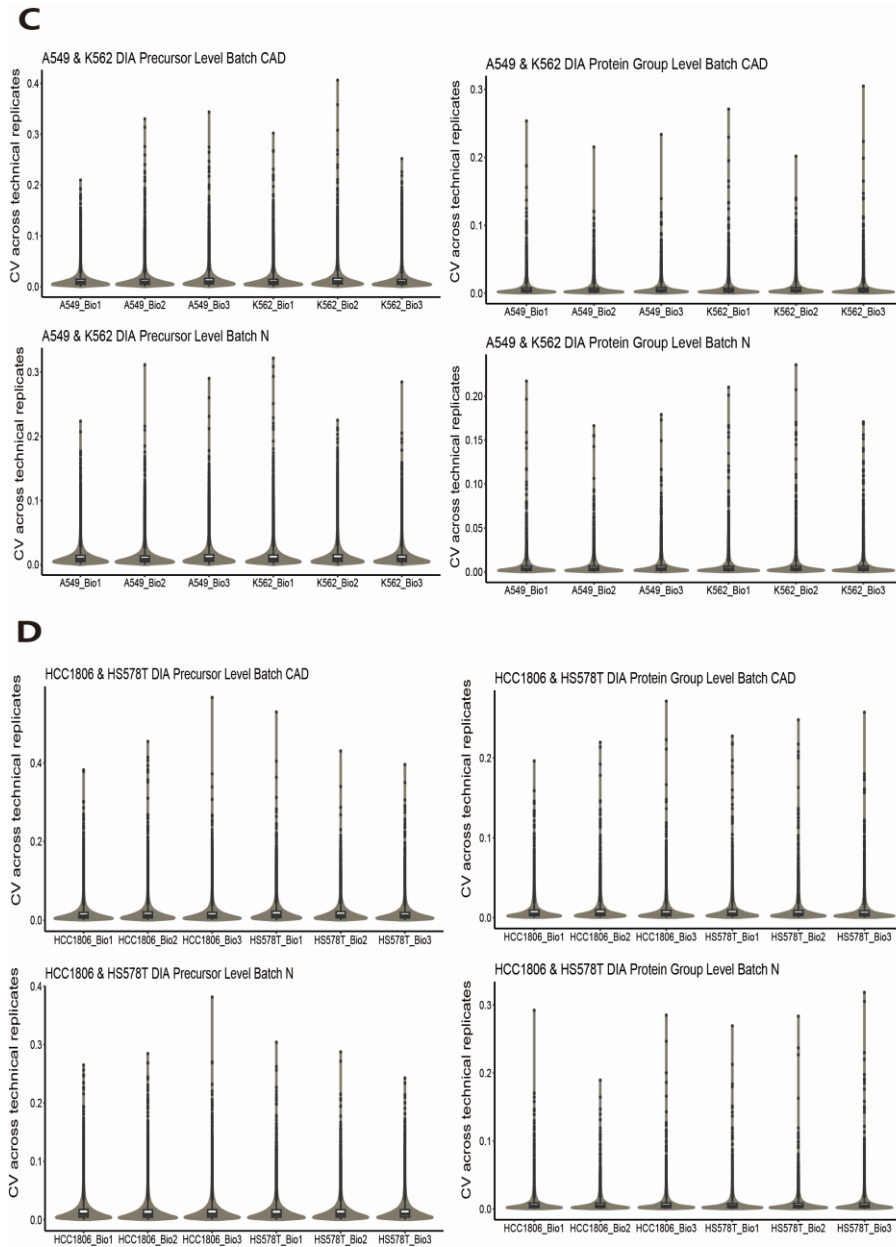
Supplementary Fig. 6: Relationship between missing proportion and score of peptide (DDA) or precursor (DIA) measured by Spearman correlation coefficients.....8

Supplementary Fig. 7: Relationship between missing proportion and score of protein (DDA) or protein group (DIA) measured by Spearman correlation coefficients. ....9

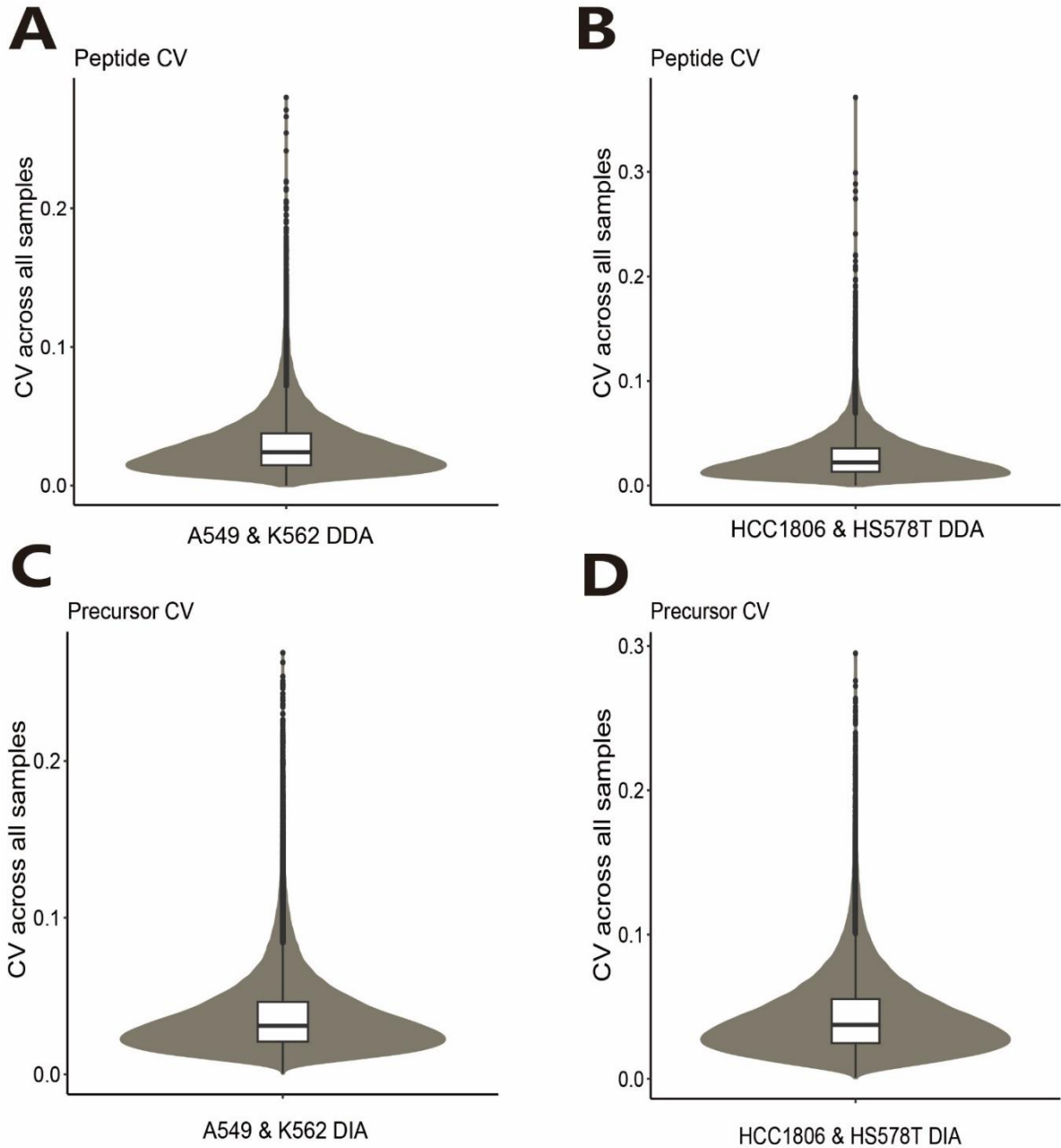


Supplementary Fig. 1: Protein coverage distribution of (A) A549 & K562 DDA dataset; (B) HCC1806 & HS578T DDA dataset; (C) A549 & K562 DIA dataset; (D) HCC1806 & HS578T DIA dataset.

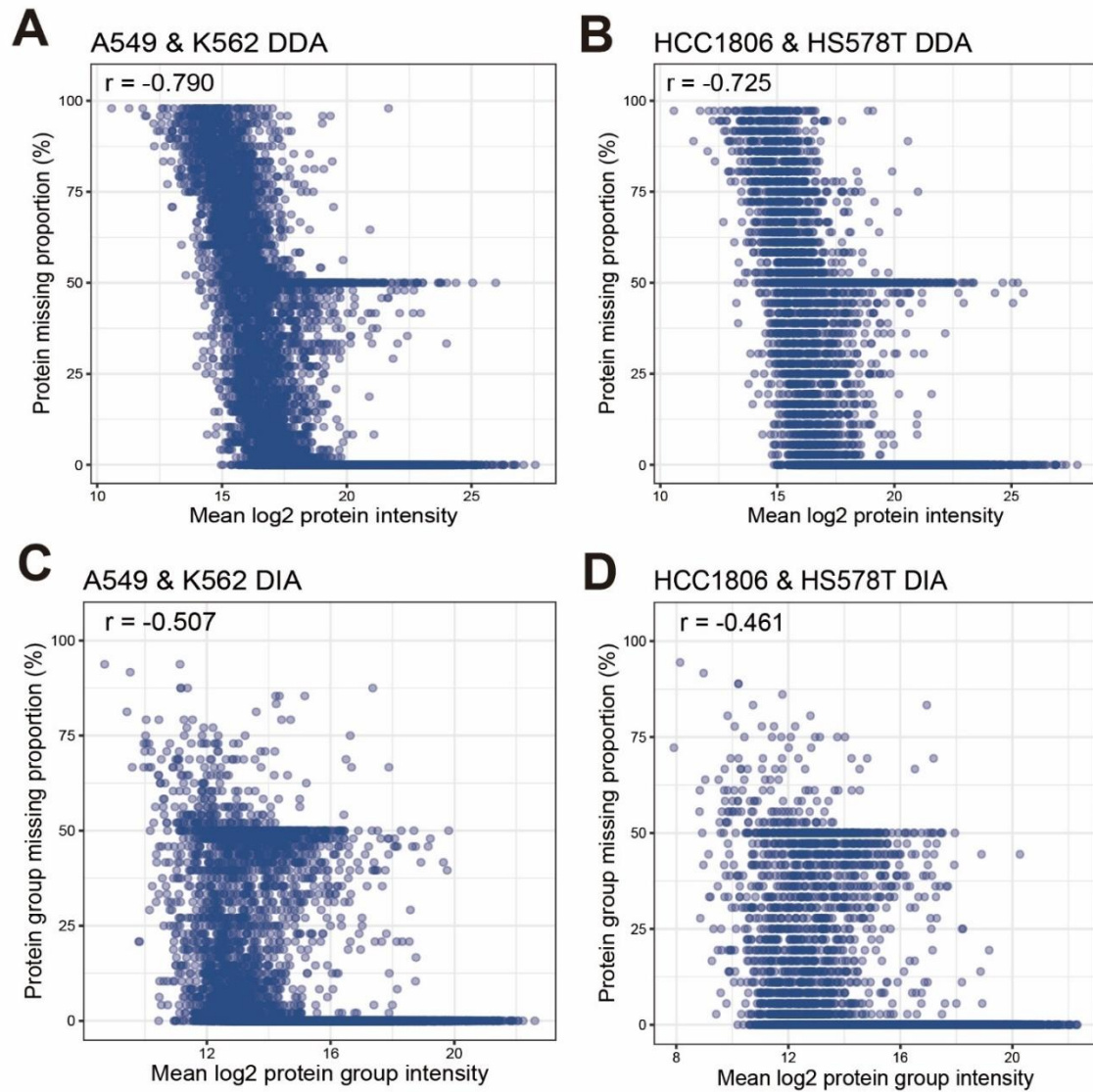
**A****B**



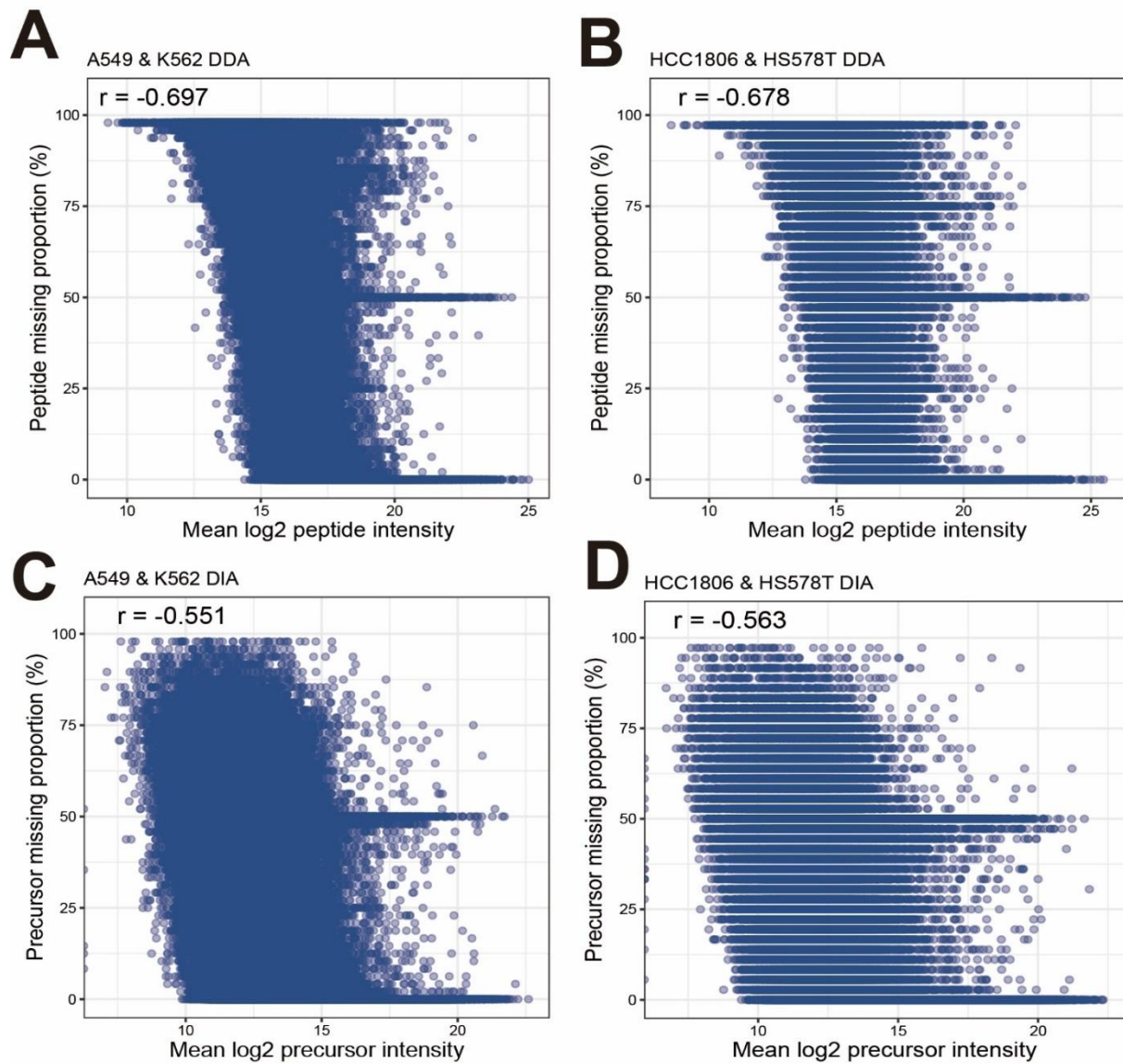
Supplementary Fig. 2: Coefficients of variation across technical replicates from (A) A549 & K562 DDA dataset; (B) HCC1806 & HS578T DDA dataset; (C) A549 & K562 DIA dataset; (D) HCC1806 & HS578T DIA dataset at 1) peptide and protein level (DDA); 2) precursor and protein group level (DIA).



Supplementary Fig. 3: Peptide variability of (A) A549 & K562 DDA dataset; (B) HCC1806 & HS578T DDA dataset; (C) A549 & K562 DIA dataset; (D) HCC1806 & HS578T DIA dataset measured by coefficients of variation across all samples.

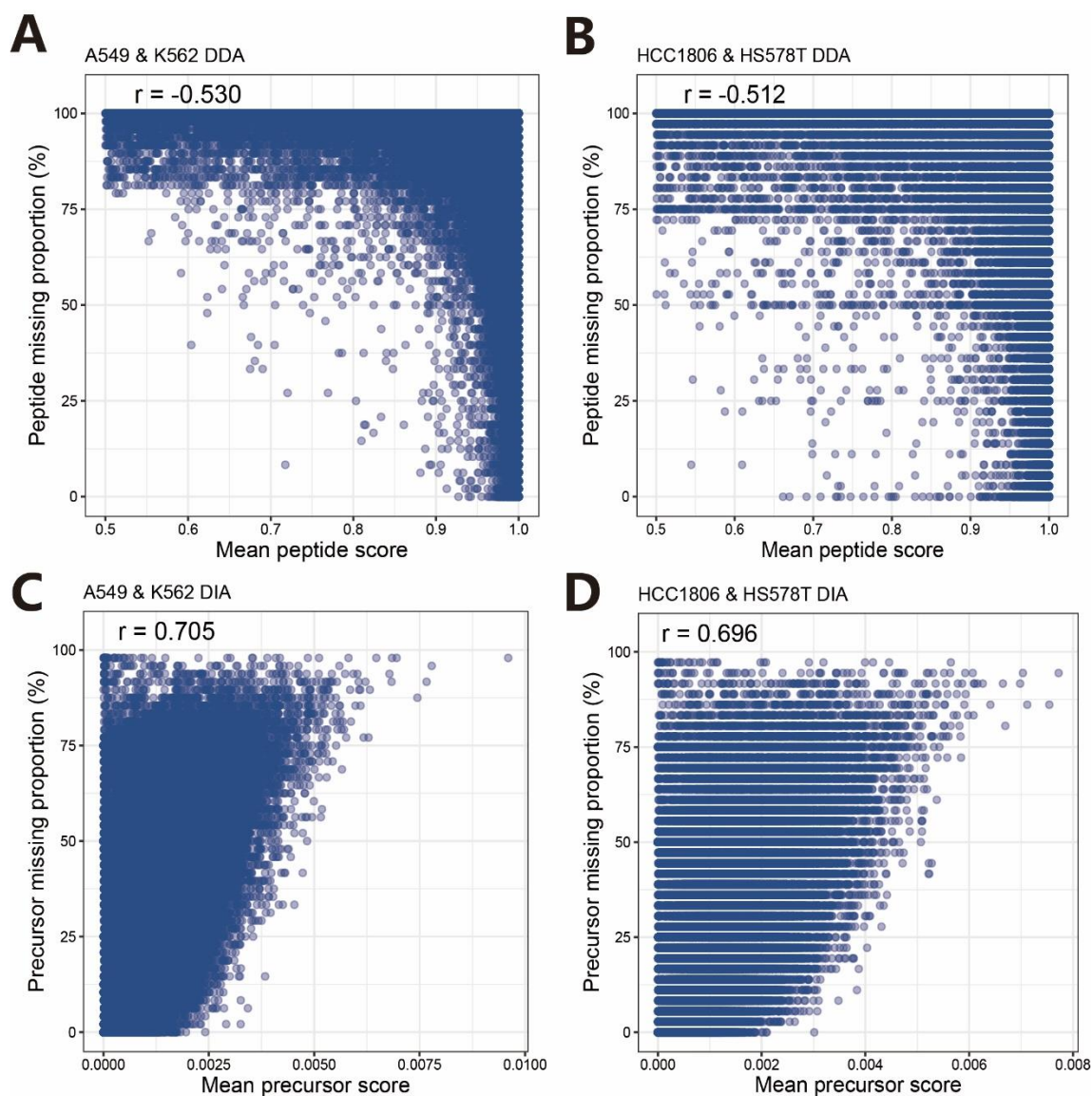


Supplementary Fig. 4: Relationship between missing proportion and abundance of protein (DDA) or protein group (DIA) from (A) A549 & K562 DDA dataset; (B) HCC1806 & HS578T DDA dataset; (C) A549 & K562 DIA dataset; (D) HCC1806 & HS578T DIA dataset measured by Spearman correlation coefficients.



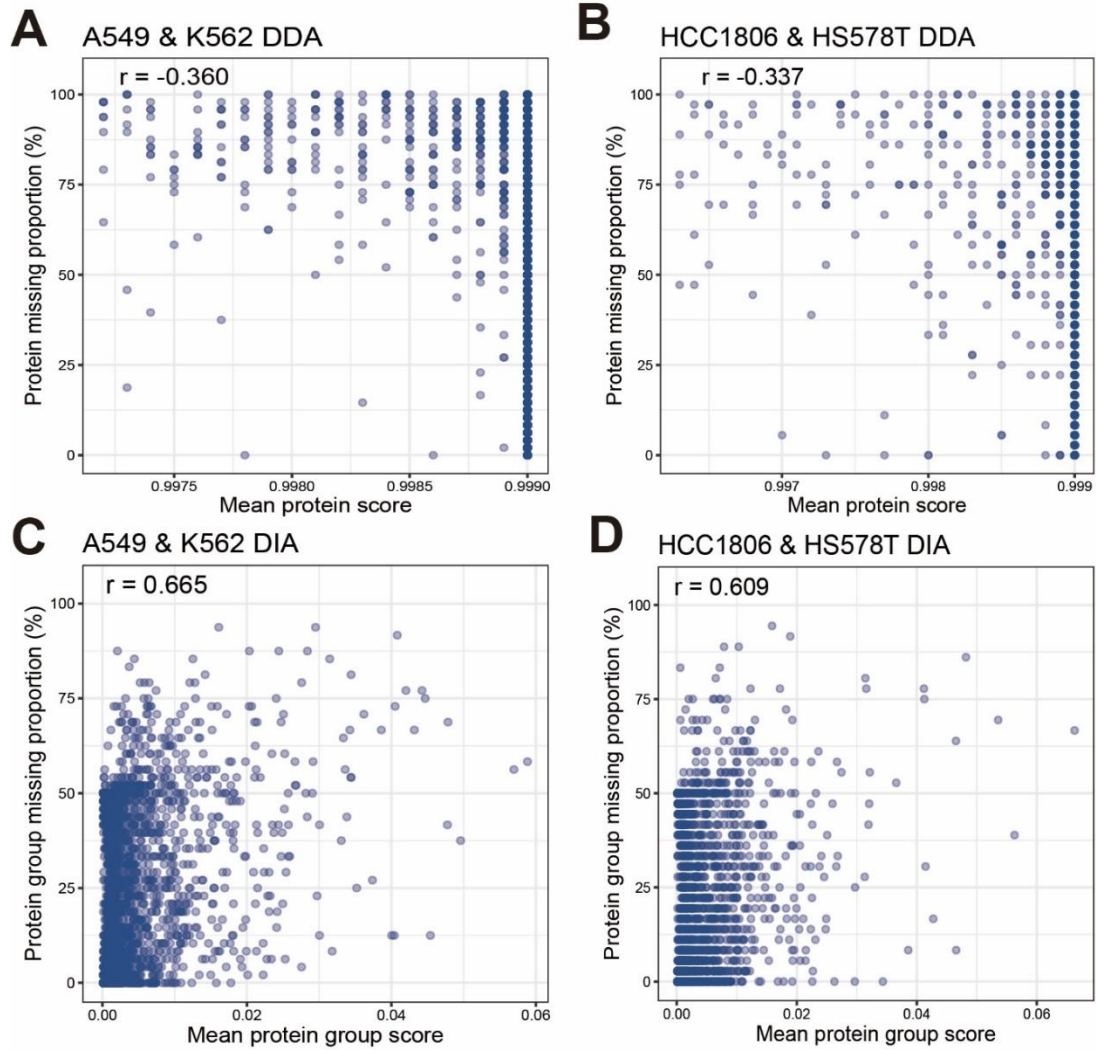
Supplementary Fig. 5: Relationship between missing proportion and abundance of peptide (DDA) or precursor (DIA) from (A) A549 & K562 DDA dataset; (B) HCC1806 & HS578T DDA dataset; (C) A549 & K562 DIA dataset; (D) HCC1806 & HS578T DIA dataset measured by Spearman correlation coefficients.





Supplementary Fig. 6: Relationship between missing proportion and score of peptide (DDA) or precursor (DIA) from (A) A549 & K562 DDA dataset; (B) HCC1806 & HS578T DDA dataset; (C) A549 & K562 DIA dataset; (D) HCC1806 & HS578T DIA dataset measured by Spearman correlation coefficients.





Supplementary Fig. 7: Relationship between missing proportion and score of protein (DDA) or protein group (DIA) from (A) A549 & K562 DDA dataset; (B) HCC1806 & HS578T DDA dataset; (C) A549 & K562 DIA dataset; (D) HCC1806 & HS578T DIA dataset measured by Spearman correlation coefficients.