

Keywords: NHANES III; population-based; disability; short physical performance battery; gait speed

Physical function as a prognostic biomarker among cancer survivors

J C Brown^{*,1}, M O Harhay¹ and M N Harhay^{1,2}

¹Center for Clinical Epidemiology and Biostatistics, University of Pennsylvania School of Medicine, 423 Guardian Drive, 8th Floor, Blockley Hall, Philadelphia, PA 19104, USA and ²Renal-Electrolyte and Hypertension Division, University of Pennsylvania School of Medicine, Philadelphia, PA 19104, USA

Background: We tested the hypothesis that objectively measured physical function predicts mortality among cancer survivors.

Methods: We assessed objectively measured physical function including the short physical performance battery (SPPB) and fast walk speed in older adult cancer survivors.

Results: Among 413 cancer survivors, 315 (76%) died during a median follow-up of 11.0 years. In multivariable-adjusted analyses, each 1-unit increase in the SPPB score and 0.1 ms⁻¹ increase in fast walk speed predicted a 12% reduction in mortality (hazard ratio (HR): 0.88 (95% confidence interval (CI): 0.82–0.94); $P < 0.001$, and HR: 0.88 (95% CI: 0.82–0.96); $P = 0.003$, respectively).

Conclusions: Objectively measured physical function may predict mortality among cancer survivors.

Despite improvements in cancer survival rates (DeSantis *et al*, 2014), cancer survivors frequently experience deleterious sequela resulting from treatment including impairments in the cardiovascular, pulmonary, neurologic, and musculoskeletal systems (Jones *et al*, 2009). Normally, these physiologic systems work in concert to enable physical function, and when one system is compromised, other systems may compensate (Dickinson *et al*, 2000, Ferrucci *et al*, 2000). However, when multiple physiologic systems are simultaneously compromised, patients are more likely to manifest impairments in physical function (Ferrucci *et al*, 2000), resulting in increased susceptibility to adverse health outcomes, such as premature mortality (Guralnik *et al*, 1994; Studenski *et al*, 2011). In this context, quantifying physical function status after cancer treatment may provide important insights to clinicians on the health, vitality, and prognosis of cancer survivors.

We tested the hypothesis that objectively measured physical function metrics, including the short physical performance battery (SPPB; Guralnik *et al*, 1994) and fast walk speed (Studenski *et al*, 2011), are capable of quantifying health and vitality by prognosticating premature mortality among a population-based sample of cancer survivors.

MATERIALS AND METHODS

Study design. The Third National Health and Nutrition Examination Survey, 1988–1994 (NHANES III), was a stratified multistage study designed to provide health information on a nationally representative sample of civilians living within the United States (Center for Disease Control, 1994). All participants provided written informed consent before participating in any study-related activities.

Study participants. Participants aged ≥ 60 years were invited to complete an evaluation that included objective measures of physical function (Ostchega *et al*, 2000). We identified 4809 participants who completed the requisite physical function measures, 413 (9%) of whom reported a prior diagnosis of non-skin-related cancer.

Objective measures of physical function. The physical function exam used in NHANES III was a modified version of the SPPB (Ostchega *et al*, 2000). The SPPB is a series of three objective measures that quantify balance, lower-extremity strength, and gait among older adults (Guralnik *et al*, 1994). Each of the three SPPB

*Correspondence: JC Brown; E-mail: brownjus@mail.med.upenn.edu

Received 11 July 2014; revised 20 September 2014; accepted 12 October 2014; published online 13 November 2014

© 2015 Cancer Research UK. All rights reserved 0007–0920/15

Table 1. Demographic and clinical characteristics, stratified by survival status^a

Characteristics	Overall (n = 413) (mean (s.e.) or n (%))	Died during follow-up		P-value
		Yes (n = 315)	No (n = 98)	
Age (years)	72.2 (0.47)	74.4 (0.56)	66.9 (0.61)	<0.001
Sex				<0.001
Male	40.0%	48.4%	19.5%	
Female	60.0%	51.6%	80.5%	
Type of cancer				0.012
Breast	26.6%	24.4%	31.8%	
Genitourinary	20.7%	24.0%	12.4%	
Gastrointestinal	18.4%	19.6%	15.4%	
Gynaecologic	13.7%	10.3%	21.9%	
Lung	3.4%	4.8%	0.0%	
Haematologic	2.5%	1.5%	5.0%	
Other, missing, or cannot remember	14.7%	15.3%	13.4%	
Time since cancer diagnosis (years)				
Mean (continuous)	10.7 (0.64)	10.1 (0.70)	12.3 (1.39)	0.151
<5	35.5%	37.1%	31.5%	0.361
5–10	21.9%	23.2%	18.7%	
≥10	42.6%	39.7%	49.8%	
Body mass index (kg m ⁻²)				
Mean (continuous)	25.8 (0.30)	25.7 (0.35)	26.1 (0.59)	0.554
<18.5	3.1%	4.4%	0.0%	0.380
18.5–24.9	43.8%	42.6%	46.6%	
25.0–29.9	35.1%	35.0%	35.4%	
≥30.0	18.0%	18.0%	18.0%	
Smoking status, n (%)				
Never	43.4%	43.0%	44.5%	0.703
Former	45.4%	46.8%	42.0%	
Current	11.2%	10.2%	13.5%	
Healthy eating index	69.6 (0.86)	68.2 (0.96)	72.5 (1.73)	0.035
No. of alcoholic drinks consumed in past week	1.1 (0.15)	0.9 (0.16)	1.6 (0.31)	0.046
Comorbid health conditions				
Hypertension	46.4%	46.0%	47.2%	0.872
Diabetes	10.3%	12.4%	5.3%	0.110
Hyperlipidaemia	33.8%	28.9%	45.9%	0.014
Asthma	6.3%	8.0%	2.2%	0.108
Arthritis	44.8%	45.1%	44.0%	0.878
Myocardial infarction	15.3%	20.0%	4.0%	<0.001
Stroke	6.7%	8.6%	2.1%	0.023
Congestive heart failure	6.2%	7.1%	4.1%	0.367
Hospitalisation(s) in past year, n (%)	29.1%	31.5%	23.2%	0.211
Haemoglobin (g dl ⁻¹)	13.5 (0.08)	13.6 (0.10)	13.5 (0.13)	0.702
Albumin (g dl ⁻¹)	4.0 (0.02)	4.0 (0.02)	4.1 (0.04)	0.271
C-reactive protein (mg l ⁻¹)	0.6 (0.05)	0.6 (0.06)	0.4 (0.08)	0.031
Self-reported health	50.1 (1.78)	45.9 (1.97)	60.5 (3.42)	<0.001
No. of bouts of walking in past week				
0	74.3%	80.5%	59.2%	0.004
1–3	7.6%	5.7%	12.2%	
≥3	18.1%	13.8%	28.6%	
Short physical performance battery				
Mean (continuous)	9.1 (0.14)	8.6 (0.18)	10.2 (0.20)	<0.001
≤6	13.9%	18.5%	2.6%	<0.001
7–9	33.6%	35.8%	28.1%	
≥10	52.5%	45.7%	69.3%	
Fast walk speed (m s ⁻¹)				
Mean (continuous)	0.72 (0.01)	0.67 (0.02)	0.82 (0.02)	<0.001
<0.6	26.7%	34.1%	8.5%	<0.001
≥0.6	73.3%	65.9%	91.5%	

^aContinuous variables are mean (s.e.) and categorical variables are column percentages.

measures is scored from 0 to 4, with higher scores indicating greater physical function. Each of the three individual SPPB scores is aggregated to derive a summary SPPB score, ranging from 0 to 12, with higher scores indicating greater physical function. Modifications to the SPPB used in NHANES III did not include the side-by-side and semi-tandem balance tests (assessing only full-tandem balance), and measured gait speed at a pace twice that of the usual walking speed (*vs* usual speed), referred to herein as fast walk speed. Fast walk speed alone has been shown to predict outcomes similarly to the full SPPB battery (Guralnik *et al*, 2000). Therefore, in addition to examining the prognostic relationship between the SPPB and mortality, we also examined the prognostic relationship between fast walk speed alone and mortality. Fast walk speed was quantified in units of m s^{-1} . Additional information about the objective measures of physical function is provided in the online Supplementary Methods.

Mortality outcome. The primary outcome of this study was all-cause mortality. Vital status was identified using the National Death Index database through 31 December 2006 (National Center for Health Statistics, 2006). Additional information about the mortality outcome is provided in the online Supplementary Methods.

Covariates. Detailed information for all study covariates is provided in the online Supplementary Methods.

Statistical analysis. We fit Cox proportional hazards regression models to estimate the hazard ratio (HR) and 95% confidence interval (CI) for all-cause mortality by varying levels of physical function.

The SPPB score was examined as a categorical and continuous variable in separate regression models. The categorical SPPB score variable classified participants into one of three groups: ≤ 6 , 7–9, and ≥ 10 , to denote increasing levels of physical function, respectively. This categorisation schema predicts limitations in activities of daily living and mobility-related disability among older adults (Guralnik *et al*, 1995). The continuous SPPB score is presented for each 1-unit increase to reflect a clinically meaningful change in physical function (Perera *et al*, 2006).

Fast walk speed was examined as a categorical and continuous variable in separate regression models. The categorical fast walk speed variable classified participants into one of two groups: $< 0.6 \text{ m s}^{-1}$ or $\geq 0.6 \text{ m s}^{-1}$ to denote slow and fast walk speed, respectively. This categorisation schema predicts dependency in activities of daily living, self-reported health status, and frequency of hospitalisation among older adults (Studenski *et al*, 2003). The continuous fast walk speed variable is presented for each 0.1 m s^{-1} increase, which is acknowledged to reflect a clinically meaningful change in physical function (Perera *et al*, 2006). Additional information about the statistical analysis is provided in the online Supplementary Methods.

RESULTS

Characteristics associated with mortality. Among 413 cancer survivors, we observed 315 deaths during a median of 11.0 years of follow-up. Participant characteristics are depicted overall and stratified by vital status (Table 1).

Objective physical function and all-cause mortality. Median survival was 10.5 and 13.4 years in the groups with an SPPB score of 7–9 and ≥ 10 , respectively, as compared with 5.0 years in the group with an SPPB score of ≤ 6 (Figure 1A). In multivariable-adjusted analyses, an SPPB score of 7–9 and ≥ 10 predicted a 43% (HR: 0.57 (95% CI: 0.37–0.89); $P = 0.014$) and a 50% (HR: 0.50 (95% CI: 0.32–0.77); $P = 0.001$) reduction in the risk of premature mortality, relative to an SPPB score of ≤ 6 (Table 2). As a

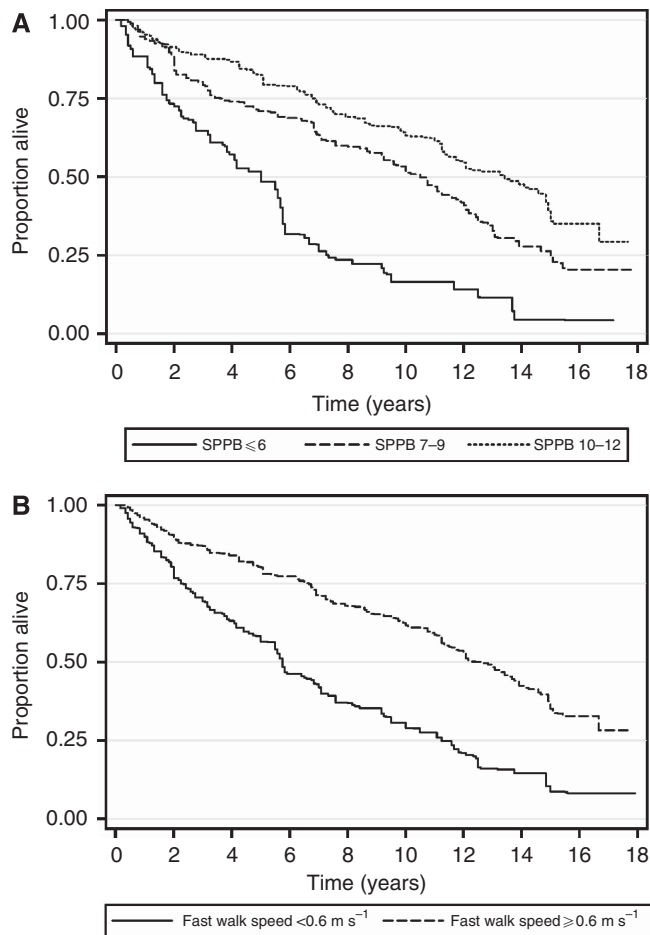


Figure 1. Kaplan–Meier survival plot, stratified by Category of Physical Function for (A) short physical performance battery (SPPB) and (B) fast walk speed.

continuous variable, each 1-unit increase in the SPPB score predicted a 12% reduction in the risk of premature mortality (HR: 0.88 (95% CI: 0.82–0.94); $P < 0.001$).

Median survival was 12.6 years in the group with a fast walk speed $\geq 0.6 \text{ m s}^{-1}$, as compared with 5.8 years in the group with a fast walk speed $< 0.6 \text{ m s}^{-1}$ (Figure 1B). In multivariable-adjusted analyses, a fast walk speed $\geq 0.6 \text{ m s}^{-1}$ predicted a 34% reduction in the risk of premature mortality, relative to a fast walk speed $< 0.6 \text{ m s}^{-1}$ (HR: 0.66 (95% CI: 0.47–0.93); $P = 0.019$). As a continuous variable, each 0.1 m s^{-1} increase in fast walk speed predicted a 12% reduction in the risk of premature mortality (HR: 0.88 (95% CI: 0.82–0.96); $P = 0.003$).

The tests of interaction between objective physical function and mortality by cancer type are provided in the online Supplementary Results. The discriminative capacity of objective physical function to predict 5- and 10-year mortality is provided in the online Supplementary Results.

DISCUSSION

The principal finding of this study is that cancer survivors with higher levels of physical function are less likely to die prematurely, relative to cancer survivors with lower levels of physical function. Our findings provide evidence that objectively measured physical function may be a useful biomarker to quantify the health and vitality of cancer survivors by prognosticating premature mortality.

Table 2. Association between physical function and all-cause mortality

Performance measures	No. of participants	HR and 95% CI					
		Model 1 ^a	P-value	Model 2 ^b	P-value	Model 3 ^c	P-value
Short physical performance battery							
Categorical							
≤6	84	1.00		1.00		1.00	
7–9	159	0.43 (0.29–0.65)	<0.001	0.55 (0.40–0.76)	<0.001	0.57 (0.37–0.89)	0.014
10–12	170	0.29 (0.19–0.43) ^d	<0.001	0.43 (0.30–0.61) ^d	<0.001	0.50 (0.32–0.77) ^d	0.001
Continuous, per 1-unit increase	413	0.81 (0.77–0.86)	<0.001	0.87 (0.83–0.92)	<0.001	0.88 (0.82–0.94)	<0.001
Fast walk speed							
Categorical							
<0.6 m s ⁻¹	153	1.00		1.00		1.00	
≥0.6 m s ⁻¹	260	0.42 (0.31–0.59)	<0.001	0.58 (0.44–0.76)	<0.001	0.66 (0.47–0.93)	0.019
Continuous, per 0.1 m s ⁻¹ increase	413	0.82 (0.77–0.88)	<0.001	0.87 (0.82–0.93)	<0.001	0.88 (0.82–0.96)	0.003

Abbreviations: CI = confidence interval; HR = hazard ratio.
^aModel 1 is unadjusted.
^bModel 2 is adjusted for age and sex.
^cModel 3 is adjusted for age, sex, body mass index (continuous), type of cancer, time since cancer diagnosis (continuous), smoking status, healthy eating index, weekly drinking, hypertension, diabetes, asthma, arthritis, myocardial infarction, stroke, congestive heart failure, hospitalisation in the prior year, self-reported health status, weekly walking (ordinal), haemoglobin, albumin, and C-reactive protein.
^dTest for linear trend of ordered categories: $P_{\text{trend}} < 0.002$.

Lifestyle behaviour modification such as physical activity, weight loss, and eating a healthful diet may preserve or improve the physiologic systems necessary to sustain physical function. Participation in physical activity preserves fast walk speed, improves SPPB, and delays the onset of major mobility disability among older adults (LIFE Study Investigators *et al*, 2006, Pahor *et al*, 2014). Coupled with physical activity, weight loss and eating a healthful diet are efficacious to improve physical function among older breast, prostate, and colon cancer survivors (Demark-Wahnefried *et al*, 2006; Morey *et al*, 2009). The promotion of lifestyle behaviours that include physical activity, weight management, and healthful eating are important among cancer survivors, as they may translate to improvements in patient-reported and clinical outcomes (Demark-Wahnefried *et al*, 2012; Rock *et al*, 2012).

One weakness of this study is the absence of information in this cohort relating to the stage of cancer and type of treatment received. A second weakness is the use of self-reported clinical and comorbidity information. Inaccurate clinical information or undiagnosed comorbidity may bias our results. For example, it has been reported that for each known case of diabetes, there exists one undiagnosed case (Dunstan *et al*, 2002). A third weakness is the limited sample size of cancer-specific subgroups. Future studies will require larger samples to examine the prognostic impact of physical function among cancer-specific subgroups. Although it is unlikely that stage of cancer or type of treatment interact with the prognostic importance of physical function (Klepin *et al*, 2010; Cesari *et al*, 2013), we had insufficient data to corroborate this finding in our data set. A fourth weakness is that physical function was a cross-sectional measurement in this cohort. Declines in longitudinally measured self-reported physical function associate with mortality among breast cancer survivors (Sehl *et al*, 2013). Conversely, a major strength of this study was the population-based sampling framework of NHANES, which permitted our analyses to represent community-dwelling older adult cancer survivors in the United States.

In conclusion, physical function, quantified using the SPPB or fast walk speed, is a prognostic biomarker among older adult cancer survivors. This finding is consistent with the hypothesis that physical function possesses the capacity to synchronously describe the performance and coordination of various physiologic systems that may be impaired as a result of cancer treatment. Additional work is necessary to confirm the prognostic importance of this

biomarker among cancer survivors and to establish an evidence base to support integrating physical function measures in the oncologic standard of care.

ACKNOWLEDGEMENTS

MNH has received training grants (5T32DK007006 and F32DK096758) from the National Institute of Diabetes and Digestive and Kidney Diseases. MOH is supported as a pre-doctoral fellow by National Cancer Institute (NCI) grant R01CA159932. JCB is supported as a pre-doctoral fellow by NCI grants U54CA155850 and R21CA182767.

CONFLICT OF INTEREST

The authors declare no conflict of interest.

REFERENCES

- Cesari M, Cerullo F, Zamboni V, Di Palma R, Scambia G, Balducci L, Incalzi RA, Vellas B, Gambassi G (2013) Functional status and mortality in older women with gynecological cancer. *J Gerontol A Biol Sci Med Sci* **68**(9): 1129–1133.
- Center for Disease Control (1994) Plan and Operation of the Third National Health and Nutrition Examination Survey, 1988–94. Series 1: Programs and Collection Procedures. *Vital Health Stat* **1**(32): 1–407.
- Demark-Wahnefried W, Clipp EC, Morey MC, Pieper CF, Sloane R, Snyder DC, Cohen HJ (2006) Lifestyle intervention development study to improve physical function in older adults with cancer: outcomes from Project LEAD. *J Clin Oncol* **24**: 3465–3473.
- Demark-Wahnefried W, Platz EA, Ligibel JA, Blair CK, Courneya KS, Meyerhardt JA, Ganz PA, Rock CL, Schmitz KH, Wadden T, Philip EJ, Wolfe B, Gapstur SM, Ballard-Barbash R, McTiernan A, Minasian L, Nebeling L, Goodwin PJ (2012) The role of obesity in cancer survival and recurrence. *Cancer Epidemiol Biomarkers Prev* **21**: 1244–1259.
- DeSantis CE, Lin CC, Mariotto AB, Siegel RL, Stein KD, Kramer JL, Alteri R, Robbins AS, Jemal A (2014) Cancer treatment and survivorship statistics, 2014. *CA Cancer J Clin* **64**(4): 252–271.
- Dickinson MH, Farley CT, Full RJ, Koehl MA, Kram R, Lehman S (2000) How animals move: an integrative view. *Science* **288**: 100–106.
- Dunstan DW, Zimmet PZ, Welborn TA, De Courten MP, Cameron AJ, Sicree RA, Dwyer T, Colagiuri S, Jolley D, Knuiaman M, Atkins R, Shaw JE (2002) The

- rising prevalence of diabetes and impaired glucose tolerance: the Australian Diabetes, Obesity and Lifestyle Study. *Diabetes Care* **25**: 829–834.
- Ferrucci L, Bandinell S, Benvenuti E, Di Iorio A, Macchi C, Harris T, Guralnik JM (2000) Subsystems contributing to the decline in ability to walk: bridging the gap between epidemiology and geriatric practice in the INCHIANTI study. *J Am Geriatr Soc* **48**: 1618–1625.
- Guralnik JM, Ferrucci L, Pieper CF, Leveille SG, Markides KS, Ostir GV, Studenski S, Berkman LF, Wallace RB (2000) Lower extremity function and subsequent disability consistency across studies, predictive models, and value of gait speed alone compared with the Short Physical Performance Battery. *J Gerontol A Biol Sci Med Sci* **55**: M221–M231.
- Guralnik JM, Ferrucci L, Simonsick EM, Salive ME, Wallace RB (1995) Lower-extremity function in persons over the age of 70 years as a predictor of subsequent disability. *N Engl J Med* **332**: 556–562.
- Guralnik JM, Simonsick EM, Ferrucci L, Glynn RJ, Berkman LF, Blazer DG, Scherr PA, Wallace RB (1994) A short physical performance battery assessing lower extremity function: association with self-reported disability and prediction of mortality and nursing home admission. *J Gerontol* **49**: M85–M94.
- Jones LW, Eves ND, Haykowsky M, Freedland SJ, Mackey JR (2009) Exercise intolerance in cancer and the role of exercise therapy to reverse dysfunction. *Lancet Oncol* **10**: 598–605.
- Klepin HD, Geiger AM, Tooze JA, Newman AB, Colbert LH, Bauer DC, Satterfield S, Pavon J, Kritchevsky SB (2010) Physical performance and subsequent disability and survival in older adults with malignancy: results from the health, aging and body composition study. *J Am Geriatr Soc* **58**: 76–82.
- LIFE Study Investigators, Pahor M, Blair SN, Espeland M, Fielding R, Gill TM, Guralnik JM, Hadley EC, King AC, Kritchevsky SB, Maraldi C, Miller ME, Newman AB, Rejeski WJ, Romashkan S, Studenski S (2006) Effects of a physical activity intervention on measures of physical performance: Results of the lifestyle interventions and independence for Elders Pilot (LIFE-P) study. *J Gerontol A Biol Sci Med Sci* **61**: 1157–1165.
- Morey MC, Snyder DC, Sloane R, Cohen HJ, Peterson B, Hartman TJ, Miller P, Mitchell DC, Demark-Wahnefried W (2009) Effects of home-based diet and exercise on functional outcomes among older, overweight long-term cancer survivors. *JAMA* **301**: 1883–1891.
- National Center for Health Statistics (2006) The Third National Nutrition and Health Survey Linked Mortality File: Matching Methodology. http://www.cdc.gov/nchs/data_access/data_linkage/mortality/nhanes3_linkage.htm.
- Ostchega Y, Harris TB, Hirsch R, Parsons VL, Kington R, Katzoff M (2000) Reliability and prevalence of physical performance examination assessing mobility and balance in older persons in the US: data from the Third National Health and Nutrition Examination Survey. *J Am Geriatr Soc* **48**: 1136–1141.
- Pahor M, Guralnik JM, Ambrosius WT, Blair S, Bonds DE, Church TS, Espeland MA, Fielding RA, Gill TM, Groessl EJ, King AC, Kritchevsky SB, Manini TM, McDermott MM, Miller ME, Newman AB, Rejeski WJ, Sink KM, Williamson JD. LIFE study investigators (2014) Effect of structured physical activity on prevention of major mobility disability in older adults: The life study randomized clinical trial. *JAMA* **311**(23): 2387–2396.
- Perera S, Mody SH, Woodman RC, Studenski SA (2006) Meaningful change and responsiveness in common physical performance measures in older adults. *J Am Geriatr Soc* **54**: 743–749.
- Rock CL, Doyle C, Demark-Wahnefried W, Meyerhardt J, Courneya KS, Schwartz AL, Bandera EV, Hamilton KK, Grant B, McCullough M, Byers T, Gansler T (2012) Nutrition and physical activity guidelines for cancer survivors. *CA Cancer J Clin* **62**(4): 243–274.
- Sehl M, Lu X, Silliman R, Ganz PA (2013) Decline in physical functioning in first 2 years after breast cancer diagnosis predicts 10-year survival in older women. *J Cancer Surviv* **7**: 20–31.
- Studenski S, Perera S, Patel K, Rosano C, Faulkner K, Inzitari M, Brach J, Chandler J, Cawthon P, Connor EB (2011) Gait speed and survival in older adults. *JAMA* **305**: 50–58.
- Studenski S, Perera S, Wallace D, Chandler JM, Duncan PW, Rooney E, Fox M, Guralnik JM (2003) Physical performance measures in the clinical setting. *J Am Geriatr Soc* **51**: 314–322.

This work is published under the standard license to publish agreement. After 12 months the work will become freely available and the license terms will switch to a Creative Commons Attribution-NonCommercial-Share Alike 3.0 Unported License.

Supplementary Information accompanies this paper on British Journal of Cancer website (<http://www.nature.com/bjc>)