



Since January 2020 Elsevier has created a COVID-19 resource centre with free information in English and Mandarin on the novel coronavirus COVID-19. The COVID-19 resource centre is hosted on Elsevier Connect, the company's public news and information website.

Elsevier hereby grants permission to make all its COVID-19-related research that is available on the COVID-19 resource centre - including this research content - immediately available in PubMed Central and other publicly funded repositories, such as the WHO COVID database with rights for unrestricted research re-use and analyses in any form or by any means with acknowledgement of the original source. These permissions are granted for free by Elsevier for as long as the COVID-19 resource centre remains active.



ORIGINAL ARTICLE

High prevalence of SARS-CoV-2 detection and prolonged viral shedding in stools: A systematic review and cohort study

Luis Antonio Díaz^{a,1}, Tamara García-Salum^{b,1}, Eduardo Fuentes-López^{c,1}, Diego Reyes^d, Javier Ortiz^d, Javier Chahuan^a, Jorge Levican^b, Leonardo I. Almonacid^b, Gonzalo H. Valenzuela^b, Eileen Serrano^b, Sigall Budnik^e, Vicente Gandara^e, Andrea Gallardo^e, María Francisca Seydewitz^e, Marcela Ferrés^b, Colomba Cofré^f, Manuel Álvarez^a, Carolina Pavez^a, Roberto Candia^a, Hugo Monrroy^a, Alberto Espino^a, Gabriel Rada^{d,g,h}, Luis Ortiz^g, Sebastián Valderrama^d, Erick Salinas^b, Adriana Toroⁱ, Marcos Ortega^{j,k}, Margarita Pizarro^a, Rafael A. Medina^{b,*,2}, Arnoldo Riquelme^{a,c,*,2}

^a Department of Gastroenterology, Escuela de Medicina, Pontificia Universidad Católica de Chile, Santiago, Chile

^b Department of Pediatric Infectious Diseases and Immunology, School of Medicine, Pontificia Universidad Católica de Chile, Santiago, Chile

^c Department of Health Sciences, Faculty of Medicine, Pontificia Universidad Católica de Chile, Santiago, Chile

^d Department of Internal Medicine, School of Medicine, Pontificia Universidad Católica de Chile, Santiago, Chile

^e School of Medicine, Faculty of Medicine, Pontificia Universidad Católica de Chile, Santiago, Chile

^f Department of Pediatric Gastroenterology and Nutrition, School of Medicine, Pontificia Universidad Católica de Chile, Santiago, Chile

^g Evidence Center, Cochrane Chile Associated Center, Pontificia Universidad Católica de Chile, Santiago, Chile

^h Epistemonikos Foundation, Santiago, Chile

ⁱ Pediatric Service, Clínica UC San Carlos, Red Salud UC Christus, Faculty of Medicine, Pontificia Universidad Católica de Chile, Santiago, Chile

^j Department of Intensive Care Medicine, School of Medicine, Pontificia Universidad Católica de Chile, Santiago, Chile

^k Department of Respiratory Medicine, School of Medicine, Pontificia Universidad Católica de Chile, Santiago, Chile

Received 3 June 2021; accepted 29 December 2021

Available online 22 January 2022

KEYWORDS

Diarrhea;
2019-nCoV-2;
Coronavirus;

Abstract

Objectives: To: 1. Describe the frequency of viral RNA detection in stools in a cohort of patients infected with SARS-CoV-2, and 2. Perform a systematic review to assess the clearance time in stools of SARS-CoV-2.

* Corresponding authors.

E-mail addresses: rmedinai@uc.cl (R.A. Medina), a.riquelme.perez@gmail.com (A. Riquelme).

¹ Díaz, García-Salum, and Fuentes-López contributed equally to this study.

² Medina and Riquelme are co-corresponding authors.

<https://doi.org/10.1016/j.gastrohep.2021.12.009>

0210-5705/© 2022 Elsevier España, S.L.U. All rights reserved.

COVID-19;
SARS-CoV-2;
Novel coronavirus

Methods: We conducted a prospective cohort study in two centers between March and May 2020. We included SARS-CoV-2 infected patients of any age and severity. We collected seriated nasopharyngeal swabs and stool samples to detect SARS-CoV-2. After, we performed a systematic review of the prevalence and clearance of SARS-CoV-2 in stools (PROSPERO-ID: CRD42020192490). We estimated prevalence using a random-effects model. We assessed clearance time by using Kaplan–Meier curves.

Results: We included 32 patients; mean age was 43.7 ± 17.7 years, 43.8% were female, and 40.6% reported gastrointestinal symptoms. Twenty-five percent (8/32) of patients had detectable viral RNA in stools. The median clearance time in stools of the cohort was 11[10–15] days. Systematic review included 30 studies (1392 patients) with stool samples. Six studies were performed in children and 55% were male. The pooled prevalence of viral detection in stools was 34.6% (twenty-four studies, 1393 patients; 95%CI:25.4–45.1); heterogeneity was high (I^2 :91.2%, Q:208.6; $p \leq 0.001$). A meta-regression demonstrates an association between female-gender and lower presence in stools ($p=0.004$). The median clearance time in stools was 22 days (nineteen studies, 140 patients; 95%CI:19–25). After 34 days, 19.9% (95%CI:11.3–29.7) of patients have a persistent detection in stools.

Conclusions: Detection of SARS-CoV-2 in stools is a frequent finding. The clearance of SARS-CoV-2 in stools is prolonged and it takes longer than nasopharyngeal secretions.

© 2022 Elsevier España, S.L.U. All rights reserved.

PALABRAS CLAVE

Diarrea;
2019-nCoV-2;
Coronavirus;
COVID-19;
SARS-CoV-2;
Nuevo coronavirus

Elevada detección de SARS-CoV-2 y prolongada excreción viral en deposiciones: Estudio de cohorte y revisión sistemática

Resumen

Objetivos: 1. Evaluar la detección de ARN viral en deposiciones y su tiempo de excreción en una cohorte de pacientes con SARS-CoV-2; 2. Realizar una revisión sistemática para evaluar el tiempo de excreción en deposiciones del SARS-CoV-2.

Métodos: Estudio de cohorte prospectiva en dos centros entre marzo-mayo del 2020. Incluimos pacientes infectados con SARS-CoV-2 de cualquier edad y gravedad. Recolectamos secreciones nasofaríngeas y deposiciones en forma seriada para detectar SARS-CoV-2. También realizamos una revisión sistemática de la prevalencia y excreción del SARS-CoV-2 en deposiciones (PROSPERO-ID: CRD42020192490). Estimamos la prevalencia usando un modelo de efectos aleatorios. Evaluamos el tiempo de excreción usando curvas Kaplan-Meier.

Resultados: Incluimos 32 pacientes; edad media $43 \pm 17,7$ años, 43,8% eran mujeres y 40,6% reportaron síntomas gastrointestinales. Veinticinco por ciento (8/32) tenían ARN viral detectable en deposiciones. La mediana de excreción en deposiciones fue 11 [10-15] días. La revisión sistemática incluyó 30 estudios (1.392 pacientes) con muestras en deposiciones. Seis estudios fueron realizados en niños y 55% eran hombres. La prevalencia estimada de detección viral en deposiciones fue de 34,6% (24 estudios, 1.393 pacientes; IC 95%: 25,4-45,1); la heterogeneidad fue elevada (I^2 : 91,2%; Q: 208,6; $p \leq 0,001$). Una metarregresión demostró una asociación entre el género femenino y menor prevalencia en deposiciones ($p = 0,004$). La mediana de tiempo de excreción fueron 22 días (19 estudios, 140 pacientes; IC 95%: 19-25). Tras 34 días, 19,9% (IC 95%: 11,3-29,7) de los pacientes tenían detección persistente en deposiciones.

Conclusiones: La detección de SARS-CoV-2 en deposiciones es un hallazgo frecuente. La excreción del SARS-CoV-2 en deposiciones es prolongada y es más tardía que en secreciones nasofaríngeas.

© 2022 Elsevier España, S.L.U. Todos los derechos reservados.

Introduction

The current pandemic of a novel Severe Acute Respiratory Syndrome coronavirus, named SARS-CoV-2, has constituted a new threat worldwide.¹ More than 13,165,000 cumulative cases have been confirmed in 188 countries across five continents, reaching a mortality rate of 4.9%.²

The novel coronavirus was first described in patients with pneumonia, and the most common symptoms included fever, dry cough, and dyspnea.³ Gastrointestinal symptoms are less common and include diarrhea, nausea, vomiting, and abdominal discomfort. The prevalence of these symptoms varies significantly among different studied populations, which can be mild at the early onset, but is frequently

followed by typical respiratory manifestations.⁴ A recent systematic review showed that 17.6% of individuals infected with SARS-CoV-2 presented with gastrointestinal symptoms; the most frequent being anorexia 26.8%, diarrhea 12.5%, nausea and vomiting 10.2%, and abdominal pain 9.2%.⁵ The presence of gastrointestinal symptoms is frequent in hospitalized patients, and these became more pronounced as the severity of the disease increased.^{6,7}

Several reports have shown the detection of SARS-CoV-2 RNA in stools for prolonged periods, suggesting that the virus could be transmitted through the digestive tract.⁸ The viral detection in stools is variable among several studies, with frequencies ranging between 15.3% and 70.3%.^{5,8–10} Interestingly, recent publications have described enterocyte viral invasion and detection of viable virus in stools, suggesting that the fecal-oral route could provide a source of transmission.^{4,10}

To date, the relevance of viral presence in stools and length of shedding has not been established adequately. In this study, we aimed to assess the viral presence and clearance of SARS-CoV-2 in stools of infected Chilean patients. We also performed a systematic review to establish the frequency of SARS-CoV-2 detection in stools, and median clearance time in nasopharyngeal secretions and stools.

Material and methods

Cohort study: baseline characteristics and sample collection

Patient clinical–epidemiological data and clinical samples were collected after informed written consent was obtained. This study was reviewed and approved by the Scientific Ethics Committee of *Pontificia Universidad Católica de Chile* (PUC) (ID 16-066).

All patients diagnosed with COVID19 were eligible to participate upon consent, including hospitalized individuals and outpatients, of any age and severity. The study protocol did not have any exclusion criteria. Between March 5 and May 28, 2020, patients diagnosed as positive for SARS-CoV-2 were recruited at two centers, which are part of the Healthcare Network of the Faculty of Medicine, *Pontificia Universidad Católica de Chile*: The *Red de Salud UC-Christus Hospital* (Santiago, Chile) and the *Clínica UC San Carlos de Apoquindo* (Santiago, Chile). The diagnosis of SARS-CoV-2 from a nasopharyngeal swab (NPS) specimen was confirmed by a qRT-PCR Light Mix Modular Wuhan CoV-2 RdRP-gene (TibMol-Biol, ROCHE), performed at the Institutional Infectious Diseases and Molecular Virology Laboratory (Santiago, Chile).

For clinical information, we performed an interview and a survey to characterize the presence and timing of symptoms. We recorded the physical examination and primary laboratory data obtained during medical evaluation. All the patients were characterized by sociodemographic data and comorbidities. We collected NPS and stool or rectal swabs between days 2 to 35 after the onset of symptoms and tested for the presence of SARS-CoV-2 by qRT-PCR. All the information was registered in an anonymous database where sensitive information was excluded. The stages of this process, collecting, transporting and processing samples are illustrated in Fig. 1. Additional data of RNA extraction

and viral genome detection are described in Supplementary Methods.

Data analysis of the cohort study

We assessed the normality assumption by means of the Shapiro–Wilk test. Descriptive statistics were obtained using the mean and standard deviation (SD) for continuous variables with normal distribution and non-normal distributions were described with the median and interquartile range. In the case of categorical variables, the proportions and percentage were estimated.

Systematic review of the Viral RNA presence in stools

We performed a systematic review to establish the prevalence of viral detection in stools and median clearance time among previous published data and our cohort. This systematic review with meta-analysis was registered on PROSPERO (CRD42020192490) and followed a prespecified analysis plan. This study is reported in accordance with the Preferred Reporting Items for a Review and Meta-analysis (PRISMA) guidelines.¹¹

Eligibility criteria

Eligible studies had to include patients diagnosed with COVID-19, regardless of age and gender. The diagnosis of COVID-19 had to be based on a compatible clinical history and molecular evidence with a qRT-PCR for SARS-CoV-2. We included studies reporting the frequency of positive viral RNA testing in stool. We considered stool samples at any time of the course of the disease.

We included studies that reported the main outcome, regardless of the design (case-reports, case-series, descriptive cases, case-control studies, cross-sectional studies, cohort studies and randomized controlled trials). We excluded studies performed in vitro, animal models, or lacking evidence of SARS-CoV-2 infection from this systematic review.

Search strategy and selection process

We conducted an electronic search from December 1, 2019, to June 3, 2020 in MEDLINE (via PubMed) database. We used included terms related to SARS-CoV-2 and stools in the search strategy. References of studies searched were also included. We hand searched (up to June 3, 2020) preprint servers (bioRxiv, medRxiv, and SSRN) and coronavirus resource centers of The Lancet, JAMA, and New England Journal of Medicine. We did not limit our search by language. Two investigators (LAD and DR) independently screened the titles and abstracts to ascertain whether each study met the eligibility criteria. The full texts of the identified eligible articles were then evaluated to determine whether they should be included in the analysis. Disagreements between the two reviewers were resolved by consensus. In case of persistent disagreement, arbitration by a third reviewer (JO) settled the discrepancy.

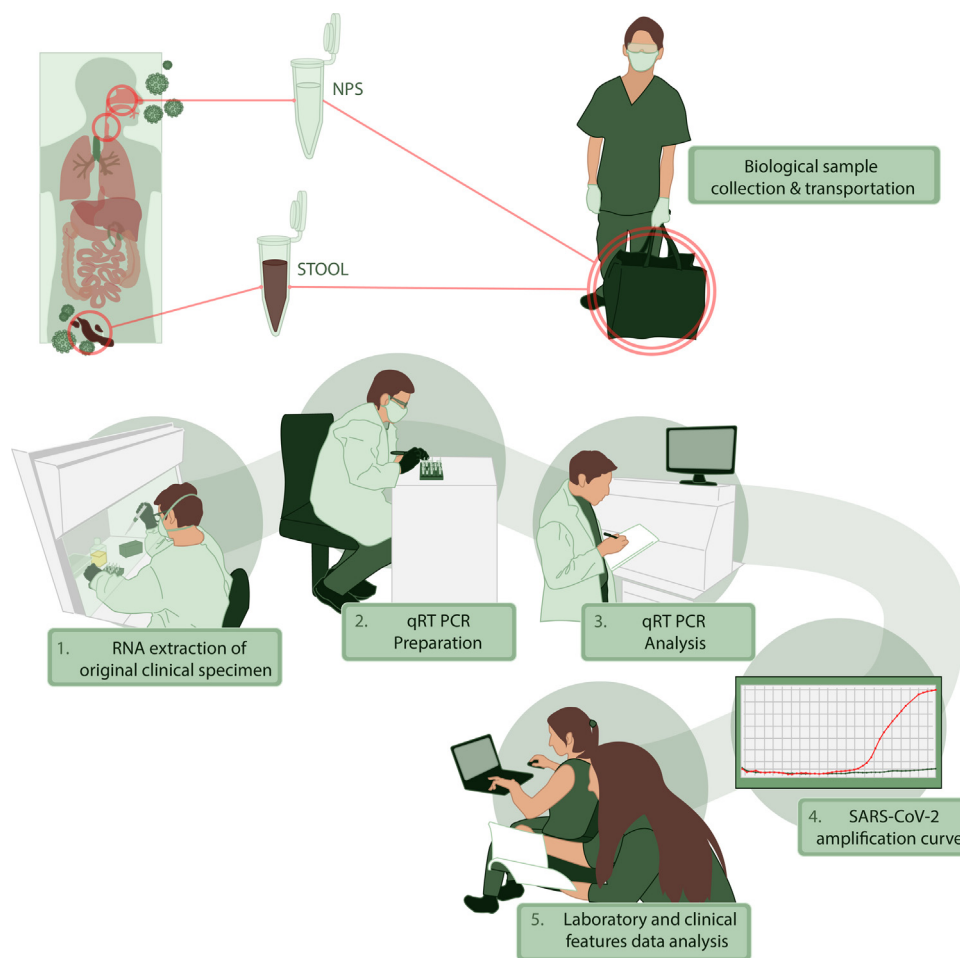


Figure 1 Stages of collection, transporting, and processing of samples from SARS-CoV-2 infected patients. NSP: nasopharyngeal swabs and aspirates.

Data collection and risk of bias assessment

Two authors (LAD and DR) independently extracted data from the studies included using forms specially designed for this purpose. The following data describing the design of the study were extracted: number of participants, age, gender, ethnicity, hospitalization, presence of viral RNA in stools, clearance time and presence of gastrointestinal symptoms. Discrepancies were resolved by a third reviewer (JO). Two investigators (LAD and DR) independently assessed the risk of bias of each included study with the Appraisal tool for Cross-Sectional Studies (AXIS) checklist for cross-sectional studies, the Institute of Health Economics (IHE) checklist tool for Case Series, and the Newcastle-Ottawa Scale (NOS) for case-control studies and cohort studies, and the Cochrane Risk of Bias Tool for randomized trials and quasi-experimental studies.

Outcomes

The main outcome was the prevalence of detection of viral RNA in stools of COVID-19 patients. This data was registered as an absolute number and percentage of the total cases. The secondary outcome was the clearance time (defined as

the days between onset of symptoms and a negative test result for viral RNA in stools).

Systematic review analysis

We estimated prevalence or event rates in the form of a proportion (with confidence interval 95%). Proportions were pooled using random-effects models. Only those studies with a sample size of at least 10 patients were included in the meta-analysis to decrease bias caused by sampling error.¹² We used Q statistic and I^2 to quantify heterogeneity. We planned a subgroup analysis according to age, gender, ethnicity, presence of gastrointestinal symptoms and hospitalization. We stratified age in three subgroups: pediatrics (patients with less than 18 years old), adults (patients over 18 years old), and general (patients of all ages). Ethnicity was defined per region of origin (Asian versus not-Asian studies). We stratified gender by predominant gender (the gender with a prevalence higher than 50%). Presence of gastrointestinal symptoms was arbitrarily grouped in high (50% or more) and low (lesser than 50%) prevalence of gastrointestinal symptoms. In the case of studies with very low or very high proportion, we used a double arcsine transformation.¹³ Small study

Table 1 Baseline characteristics of our cohort according to outpatient or hospitalized care.

	Global (%) (N= 32)	Outpatient care (%) (N= 13)	Hospitalized patients (%) (N= 19)	P value
Age (mean)	43.7 ± 17.7	38.0 ± 13.6	47.7 ± 19.4	0.131
Gender				
Male	18 (56.2)	5 (38.5)	13 (68.4)	0.093
Female	14 (43.8)	8 (61.5)	6 (31.6)	
Gastrointestinal symptoms				
Diarrhea	12 (37.5)	6 (46.2)	6 (31.6)	0.403
Constipation	1 (3.1)	0 (0)	1 (5.3)	0.401
Nausea	4 (12.5)	2 (15.4)	2 (10.5)	0.683
Vomiting	1 (3.1)	1 (7.7)	0 (0)	0.219
Abdominal pain	2 (6.3)	0 (0)	2 (10.5)	0.227
SARS-CoV-2 detection in stools	8 (25)	4 (30.8)	4 (21.1)	0.533
Mechanical ventilation	–	–	6 (31.6)	–
Deaths	1 (3.1)	0 (0)	1 (5.3)	0.401

effect was evaluated with a funnel plot. Random effects meta-regression was used to examine whether baseline characteristics covariates explained heterogeneity of proportions between studies.¹⁴ As such, subgroup analysis should be considered as exploratory. Clearance of viral RNA in stools was defined as the time between onset of symptoms and the last detection of SARS-CoV-2 in stools. We registered the disaggregated data from studies that reported clearance in NPS and stools for each participant. Based on this data, we performed Kaplan–Meier survival curves to estimate viral clearance in NPS and stools. We compared clearance in NPS and stools curves with log-rank test. The analyses were done with the use of STATA (version 16, StataCorp, College Station, Texas) and R software for statistical computing version 3.6.1.¹⁵ We included the STATA *metaprop* command to perform meta-analyses.¹⁶

Grading of evidence

The quality of evidence for the outcomes was graded with the GRADE framework.

Role of the funding source

The funding source only provided support for the analysis of the nasopharyngeal and stool samples. The researchers did not receive a fee or other incentives for the systematic review process.

Results

Gastrointestinal symptoms and stool detection in our cohort study

We included 32 patients recruited between the 3rd March 2020 and 28th May 2020. Median age was 43.7 ± 17.7 years and 14 (43.8%) were females. Nineteen (59.4%) patients were hospitalized and 6 (31.6%) required invasive

mechanical ventilation. One of our patients died at the end of this study (mortality rate of 3.1%).

In our cohort, the most common extraintestinal manifestations were fever (90.6%), cough (81.3%), myalgia (50%), headache (50%), dyspnea (40.6%), anosmia (37.5%), chills (34.4%), ageusia (28.1%), asthenia (25%) and odynophagia (18.8%). In addition, thirteen patients (40.6%) referred to gastrointestinal symptoms, including: diarrhea (37.5%), nausea (12.5%), abdominal pain (6.3%), vomiting (3.1%), and constipation (3.1%). The median NPS and stool samples obtained were 3 [2–4] and 2 [1–3], respectively. After diagnosis, Viral RNA was detected in respiratory secretions of 28 patients (87.5%), and in stools of 8 (25%) patients. Three patients (37.5%) with viral detection in stools presented with gastrointestinal symptoms: three of them declared to have diarrhea. Six out of 19 individuals that were hospitalized had at least one gastrointestinal symptom during infection. Participant characteristics and gastrointestinal symptoms are summarized in Table 1. Positive stool samples were detected at different time points (days 4–18)(Supplementary material). The median clearance time in stools was 11 [10–15] days.

Systematic review of SARS-CoV-2 detection in stools

We identified 1683 records and 671 were duplicated. After a screening process against title and abstract, we obtained 59 full-text articles that were assessed for eligibility. We finally selected 30 studies for our systematic review from 6 countries (China, France, Germany, Hong Kong, Singapore, and the United States). We included 23 articles in the meta-analysis of prevalence of SARS-CoV-2 detection in stools and 18 articles were used to estimate clearance in stools. We also included data of the current study in both analyses. The selection process is described in Fig. 2. All studies were observational in design; no randomized trials were identified. Among the 30 studies, 14 were case series and 16 cohort studies. The study with the largest number of stool samples

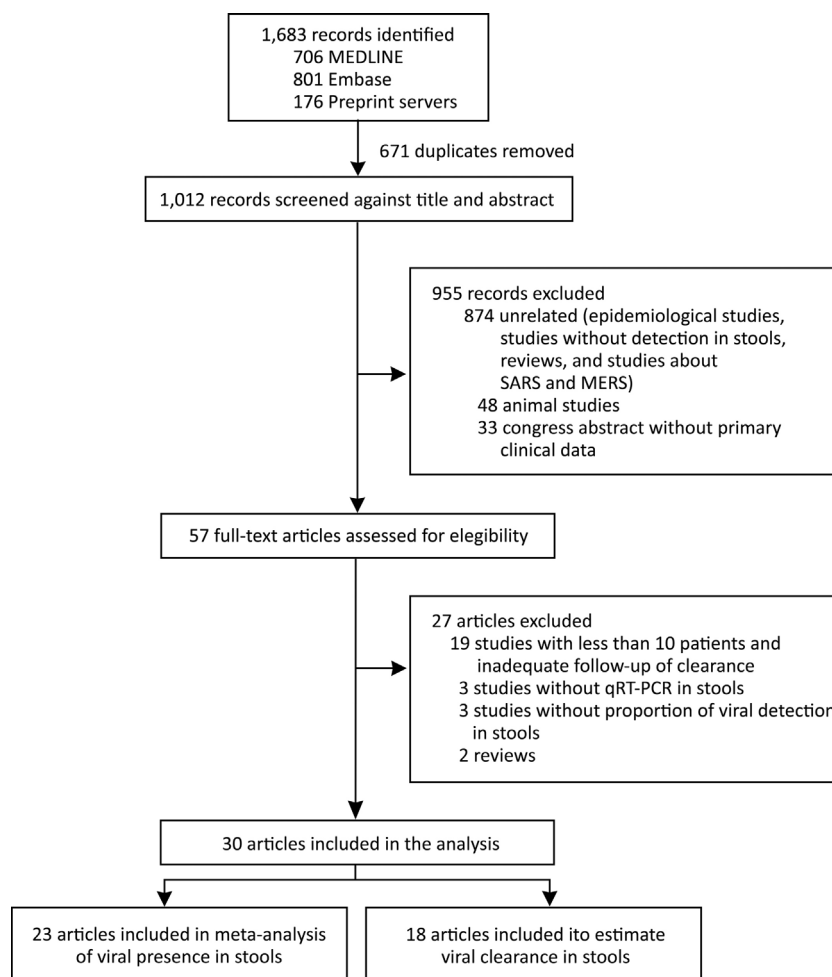


Figure 2 Study selection for the systematic review.

included a total of 273 cases.¹⁷ The risk of bias assessment results is presented in supplementary material.

The pooled studies included a total of 1392 patients that were tested by SARS-CoV-2 qRT-PCR in stools. Fifty-five percent were male and 6 studies were performed exclusively in children. Twenty-two out of 30 (73.3%) studies included only hospitalized patients. The grade of evidence was considered very low and low, since all the information emerged from case series and cohort studies, respectively. We performed subgroup analyses per age, gender, ethnicity, presence of gastrointestinal symptoms, and hospitalization. [Table 2](#) summarizes the main baseline characteristics summary of each study.

Detection of viral RNA in stools

We identified 1393 patients from 23 studies and our current study, which tested the presence of viral RNA in stools (including our cohort). The pooled prevalence of viral detection in stools was 34.6% (twenty-four studies, 1393 patients; 95%CI: 25.4–45.1); the heterogeneity among studies was high (I^2 : 91.2%, Q : 208.6; $p \leq 0.001$) ([Fig. 3](#)). The funnel plot of this analysis is provided in supplementary material ([Fig. 1S](#)). Subgroup analysis by gender showed a prevalence

of 30% in female-predominant studies (six studies, 509 patients; 95%CI: 15.0–51.0) and 42% in male-predominant studies (seven studies, 208 patients; 95%CI: 29.0–57.0). However, there was no significant differences between subgroups ($p = 0.30$), and heterogeneity was high [I^2 : 92.8%, Q : 66.9; $p \leq 0.001$] and [I^2 : 73.7%, Q : 19.2; $p \leq 0.001$], respectively]. Subgroup analysis by age, ethnicity, presence of gastrointestinal symptoms and hospitalization did not identify relevant differences to global pooled prevalence (Supplementary material). The heterogeneity was high in those four subgroups analysis. We performed a meta-regression of 8 studies including age, gender, and presence of gastrointestinal symptoms. The I^2 was 60.6% and the R^2 was 63.1%, with a p -value=0.038 of the model. For each increase of 1% of female in the sample, proportion of SARS-CoV-2 detection in stools decreased a 0.5% ($p = 0.004$). The age and presence of gastrointestinal symptoms were not associated to increase in the proportion of SARS-CoV-2 detection in stools ($p = 0.816$ and $p = 0.103$, respectively).

Clearance time of viral RNA in stools

We included patients with viral detection in stool samples from 18 studies and our current study to assess

Table 2 Main characteristics of studies included in the analysis.

First author	Country	Date	Population	Gender (female) (%)	Exclusively hospitalized patients	Number of patients with stool samples	Follow-up of clearance in stools
Chen C ²⁹	China	March 2020	General	8 (36.36)	Yes	19	Yes
Chen Y ²⁷	China	April 2020	Adult	27 (64.29)	Yes	42	Yes
Chen W ⁴⁹	China	February 2020	Adult	Not reported	Yes	28	Yes
Cheung KS ⁵	Hong Kong	April 2020	Adult	32 (54.24)	No	59	No
Dreher M ⁵⁰	Germany	April 2020	Adult	17 (34)	Yes	15	No
Han C ⁵¹	China	April 2020	Adult	115 (55.8)	Yes	22	No
Huang JT ¹⁷	China	June 2020	Adult	157 (51)	Yes	273	No
Jiang X ⁵²	China	April 2020	General	2 (66.7)	No	3	No
Jiehao C ⁵³	China	February 2020	Pediatrics	6 (60)	Yes	6	Yes
Kujawski S ⁵⁴	USA	March 2020	Adult	4 (33.3)	No	10	Yes
Li H ⁵⁵	China	February 2020	Adult	18 (62.1)	No	29	Yes
Lescure FX ⁵⁶	France	March 2020	Adult	2 (40)	Yes	5	No
Pan Y ⁵⁷	China	February 2020	Not reported	Not reported	No	17	No
Wang W ¹⁰	China	February 2020	General	66 (32)	No	153	No
Wei XS ⁵⁸	China	March 2020	Adult	56 (66.6)	Yes	84	No
Wolf GK ⁵⁹	Germany	February 2020	Pediatrics	2 (66)	Yes	3	Yes
Wu Y ³³	China	March 2020	Adult	35 (47.3)	Yes	74	Yes
Xiao F 1 ³⁹	China	January 2020	Not reported	Not reported	No	28	No
Xiao F 2 ⁶⁰	China	February 2020	General	32 (43.8)	Yes	73	No
Xing YH ⁶¹	China	March 2020	Pediatrics	1 (33.3)	Yes	3	Yes
Xiong XL ⁶²	China	May 2020	Pediatrics	94 (38.52)	No	105	No
Xu Y ⁶³	China	April 2020	Pediatrics	4 (40)	Yes	10	Yes
Yang Z ⁶⁴	China	February 2020	Adult	1 (33.3)	Yes	3	Yes
Young BE ⁶⁵	Singapore	March 2020	Adult	9 (50)	Yes	8	Yes
Zautner AE ⁶⁶	Germany	April 2020	Adult	6 (35.3)	Yes	12	No
Zhang J ⁶⁷	China	February 2020	Adult	7 (50)	Yes	14	No
Zeng L ⁶⁸	China	March 2020	Pediatrics (Newborns)	14 (42.4)	Yes	33	Yes
Zhang W 1 ³²	China	February 2020	Not reported	Not reported	Yes	39	No
Zhang W 2 ³²	China	February 2020	Not reported	Not reported	Yes	139	No
Zheng S ⁶⁹	China	February 2020	Adult	38 (39.6)	Yes	83	No

viral clearance in stools. From a total of 442 patients, 423 were tested in stools and only 140 had an adequate prospectively follow-up. We also included 197 patients with nasopharyngeal samples follow-up. The percentage of viral absence in stools at the end of follow up was 72.6% (95%CI: 64.39–79.51). The median clearance time of viral RNA detection in NPS and stools was 13 days (95%CI: 12–14) and 22 days (95%CI: 19–25), respectively (Fig. 4). At day 10, only 10.8% (95%CI: 6.7–17.3) of patients presented virus clearance in stools. Interestingly, after 34 days, the

19.9% (95%CI: 11.3–29.7) of patients still had a persistent detection of viral RNA in stools.

Discussion

In this study, we analyzed general clinical data from 32 SARS-CoV-2 infected patients. In the first stage, we found that 40.6% of the studied population presented with gastrointestinal symptoms: 37.5% reported diarrhea, 12.5% nausea,

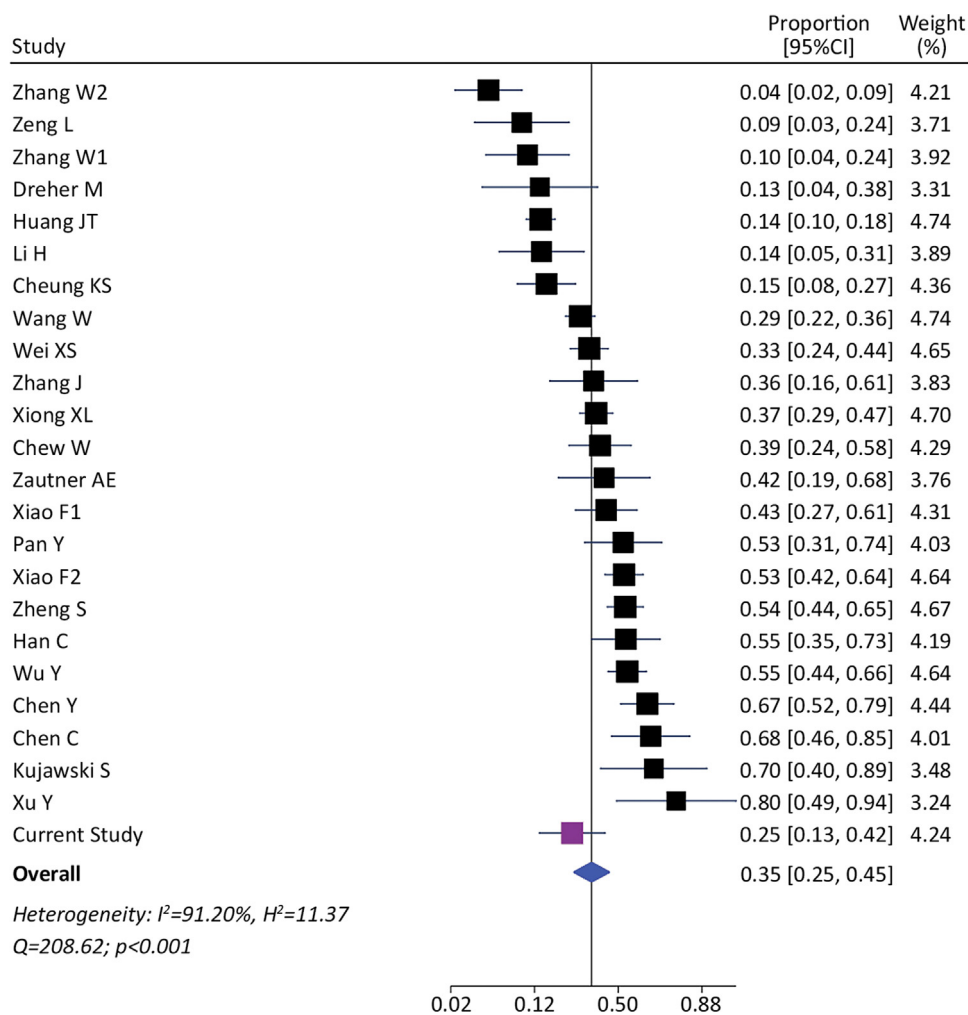


Figure 3 Forest plots of prevalence of viral detection in stools from SARS-CoV-2 infected patients.

6.3% abdominal pain, 3.1% vomiting, and 3.1% constipation. A significant percentage of our cohort required hospitalization 59.4%, reaching a mortality of 3.1%. We determined that 25% of patients had detectable stool viral RNA during illnesses. Posteriorly, we conducted a systematic review from 30 studies and the data obtained from our cohort phase. The systematic review of the evidence found that the proportion of viral RNA detection in stools is 34.6%, with a median clearance time in stools of 22 days (95%CI 19–25).

In our cohort, diarrhea and nausea were the most prevalent symptoms, highlighting and confirming the diverse clinical manifestation induced by this novel coronavirus.^{5,18–21} The pooled prevalence of SARS-CoV-2 detection in stools was 34.6%, which reflects gastrointestinal shedding in a considerable number of patients. On the other hand, there is an important number of patients without SARS-CoV-2 detection in stools. The differences among detection in stools could potentially be explained by time since onset of symptoms and collection of stool samples, inadequate transport/storage conditions, differences in sample processing, or characteristics inherent to the virus or patients.

The SARS and SARS-CoV-2 strains share approximately 78% identity at the amino acid level.²² It has been proposed that SARS could enter into cells using the Angiotensin-converting

Enzyme 2 (ACE2) as a receptor, which is widely distributed on the respiratory and gastrointestinal tract, could potentially allow the entry of the virus in the intestinal tract.²³ Hence, given their similarity in tropism, SARS-CoV-2 could also enter cells by similar mechanism.^{24,25} Moreover, since ACE2 modulates intestinal inflammation, it is plausible that SARS-CoV-2 infection could disrupt the ACE2 function, promoting fecal-oral transmission.²⁶

Remarkably, the Kaplan–Meier clearance curves showed a median clearance time in NPS of 13 days (95%CI: 12–14), which was significantly lower than clearance in stools ($p<0.001$). In fact, viral RNA detection in stools could occur for at least another nine (for 22 days or more) in the half proportion of individuals tested (Fig. 4). These findings suggest a longer shedding period in the gastrointestinal tract, which is in agreement with reports from cohort studies in Hong Kong, Macau, Beijing and Germany,^{27–30} and a case study in Italy.³¹

The identification of prolonged SARS-CoV-2 RNA shedding in rectal swabs was reported as early as mid-February 2020 by Zhang et al.³² Therefore, the potential of viral transmission through the oral-fecal route has been cautioned since then, and recent additional evidence supports this idea. First, it was reported that viral RNA can be

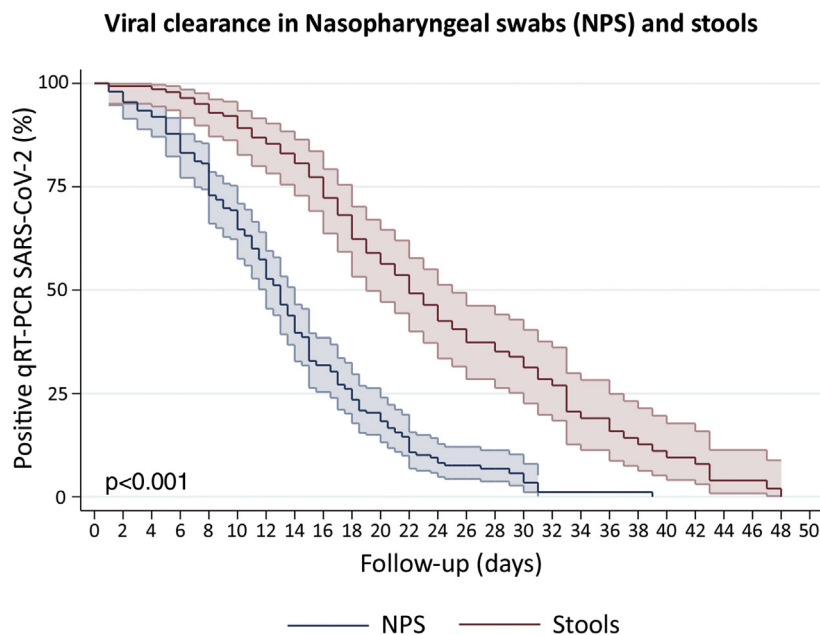


Figure 4 Survival curves to estimate clearance of SARS-CoV-2 in Nasopharyngeal swabs (NPS) and stools. We disaggregated information for each patient to obtain individualized data. Clearance was estimated considering the time between onset of symptoms and the last viral detection in NPS or stools. Survival estimates were performed using Kaplan–Meier curves and we compared both curves with log-rank test.

detected in fecal samples of infected individuals for up to 11.2 days after respiratory samples became negative and up to 47 days after symptom onset³³; secondly, virus RNA was found at high concentrations in stool, and occasionally viral sub genomic messenger RNA (only present in replicating cells) can also be detected in these specimens; third, endoscopic studies of SARS-CoV-2 infected individuals revealed esophageal bleeding, erosions and ulcers in one patient and viral RNA was detected in different gastrointestinal tissues of 3 individuals.³⁴ Fourth, several studies demonstrated the presence of viral RNA in untreated wastewater from the Netherlands, Italy, Australia, and Chile.^{35–38} Interestingly, two studies demonstrated that viral isolation from feces was possible.^{10,39} Additionally, two recent studies reported the infection and replication of SARS-CoV-2 on intestinal organoids.^{40,41} Altogether, our current study and previous reports provide evidence strongly suggesting that SARS-CoV-2 can infect and possibly replicate in the gastrointestinal tract, supporting the oral-fecal route of SARS-CoV-2 as a potential source for transmission. This highlights the need to exercise increased caution when handling and disposing of stool samples, and when conducting endoscopic procedures in SARS-CoV-2 infected individuals.

SARS-CoV-2 detection could also be helpful in monitoring and tracking SARS-CoV-2 circulation, especially during massive outbreaks with limited testing capacity. Interestingly, a recent study from Spain demonstrated that SARS-CoV-2 detection in wastewater could anticipate COVID-19 occurrence in a low prevalence area.⁴² On the other hand, in a study carried out in Santiago, Chile (a high populated city), the SARS-CoV-2 detection on wastewater also demonstrated a prediction of outbreak in some neighborhoods.³⁸ Therefore, the epidemiological information from SARS-CoV-2

testing in untreated wastewater could significantly impact the surveillance of the viral circulation of SARS-CoV-2 and its variants in the future.⁴³

The limitations of the cohort study were the limited number of patients followed-up and the difficult in obtaining daily stool samples. In addition, there is not a gold standard of SARS-CoV-2 infection and SARS-CoV-2 qRT-PCR has sensitivity near to 70% in NPS.⁴⁴ This sensitivity could be even lower according to a recent study, reaching 47.3% in real life and underestimating detection of SARS-CoV-2 in organs, fluids, and stools.⁴⁵ Also, we identified a high heterogeneity among the studies to estimate proportion of SARS-CoV-2 RNA detection in stools. We performed several analyses to elucidate the cause of this heterogeneity including a meta-regression. We identified that gender can importantly contribute to this high heterogeneity. This interesting observation could be explained by the higher expression of ACE2 and a less robust T cell-mediated immunity in male patients.^{46,47} However, this heterogeneity could also be explained by important differences and quality among prior published studies. Future research questions include the establishment of additional data to support the fecal-oral transmission and the assessment of the long-term impact of SARS-CoV-2 infection in the gastrointestinal tract. Finally, although anal swabs to detect SARS-CoV-2 have been performed as a screening tool in countries such as Indonesia, the sensitivity of this technique is low (36.7%).⁴⁸ Therefore, we require more sensitive anal-swabs-based tests to recommend SARS-CoV-2 detection in anal swabs as a screening tool.

In conclusion, this cohort study and systematic review demonstrated that detection of SARS-CoV-2 in stools is a frequent finding. The clearance of SARS-CoV-2 in stools is

significantly prolonged as compared to clearance in nasopharyngeal secretions. The heterogeneity in the systematic reviews were high and could be partially explained by gender and methodological deficiencies of several included studies. Further data is required to support the plausibility of fecal-oral infective route.

Authors' contributors

AR and RAM are responsible for the overall content of the project and the manuscript submitted as guarantors of the project. AR, RAM, LAD, TGS, DR, and JO had full access to all the data in the study. LAD and TGS take responsibility for the integrity of the data and the accuracy of the data analysis. AR, RAM, LAD, and TGS take the final decision to submit for publication. Study concept and design: AR, RAM, MF, MA, CC, LAD, RC, GR, LO. Acquisition of data: LAD, TGS, EFL, GHV, EIS, ERS, AT, SV, MO, JC, DR, JO, SB, VG, AG, MFS. Experiments and qRT-PCR analysis: RAM, MF, TGS, JL, LIA, EIS. Analysis or interpretation of data: RAM, AR, LAD, TGS, EFL, JC, LIA, EIS, RC, CP, HM, AE, DR, JO, GR. Drafting of the manuscript: LAD, TGS, EFL, RAM, AR, JC, MP. Critical revision of the manuscript for relevant intellectual content: LAD, TGS, DR, JO, EFL, JC, JL, LIA, EIS, SB, VG, AG, MFS, MF, CC, MA, CP, AE, RC, HM, GR, LO, SV, ERS, AT, MO, PG, MP, RAM, AR. Statistical analysis: EFL, RC, LAD, TGS.

Financial support

Protocols and the study set-up used for this study were based on influenza virus studies established in part with the support of the FONDECYT 1161971 grant from the Agencia Nacional de Investigación y Desarrollo (ANID) from Chile, the FLUOMICs Consortium (NIAID grant U19AI135972) funded by NIH and with funding from CRIP (Center for Research on Influenza Pathogenesis), an NIH funded Center of Excellence for Influenza Research and Surveillance (CEIRS, contract number HHSN272201400008C) to RAM.

Conflict of interest

The authors reported no potential conflict of interest.

Acknowledgement

Valentina Riquelme, Centro UC - Síndrome de Down, Escuela de Medicina, Pontificia Universidad Católica de Chile, for her contribution with illustrations. Alonso Rioseco MD, Director of Clínica UC San Carlos, Olga Martínez, Chief-Coordinator of Nursery, Lorena Solís, Pediatric Nurse coordinator (Clínica UC San Carlos, Red de Salud UC Christus), Lorena Troncoso, Nurse coordinator, Alejandra Muñoz, nurse supervisor (Intensive Care Unit, Clínica UC San Carlos), Camila Noceda, Nurse (Clínica UC San Carlos, Red de Salud UC Christus), Jaime Labarca, Department of Infectious Diseases, and Patricia García, Department of Clinical Laboratory, for their support related to the recruitment process for this study.

Appendix A. Supplementary data

Supplementary data associated with this article can be found, in the online version, at [doi:10.1016/j.gastrohep.2021.12.009](https://doi.org/10.1016/j.gastrohep.2021.12.009).

References

1. Cucinotta D, Vanelli M. WHO declares COVID-19 a pandemic. *Acta Biomed.* 2020;91:157–60.
2. Dong E, Du H, Gardner L. An interactive web-based dashboard to track COVID-19 in real time. *Lancet Infect Dis.* 2020.
3. Wang D, Hu B, Hu C, Zhu F, Liu X, Zhang J, et al. Clinical characteristics of 138 hospitalized patients with 2019 novel coronavirus-infected pneumonia in Wuhan, China. *JAMA.* 2020.
4. Gu J, Han B, Wang J. COVID-19: gastrointestinal manifestations and potential fecal-oral transmission. *Gastroenterology.* 2020.
5. Cheung KS, Hung IFN, Chan PPY, Lung KC, Tso E, Liu R, et al. Gastrointestinal manifestations of SARS-CoV-2 infection and virus load in fecal samples from the Hong Kong Cohort and systematic review and meta-analysis. *Gastroenterology.* 2020.
6. Pan L, Mu M, Yang P, Sun Y, Wang R, Yan J, et al. Clinical characteristics of COVID-19 patients with digestive symptoms in Hubei, China: a descriptive, cross-sectional multicenter study. *Am J Gastroenterol.* 2020.
7. Díaz LA, García-Salum T, Fuentes-López E, Ferrés M, Medina RA, Riquelme A, et al. Symptom profiles and risk factors for hospitalization in patients with SARS-CoV-2 and COVID-19: a large cohort from South America. *Gastroenterology.* 2020.
8. Ling Y, Xu SB, Lin YX, Tian D, Zhu ZQ, Dai FH, et al. Persistence and clearance of viral RNA in 2019 novel coronavirus disease rehabilitation patients. *Chin Med J (Engl).* 2020.
9. Sultan S, Altayar O, Siddique SM, Davitkov P, Feuerstein JD, Lim JK, et al. AGA Institute rapid review of the gi and liver manifestations of COVID-19 meta-analysis of international data, and recommendations for the consultative management of patients with COVID-19. *Gastroenterology.* 2020.
10. Wang W, Xu Y, Gao R, Lu R, Han K, Wu G, et al. Detection of SARS-CoV-2 in different types of clinical specimens. *JAMA.* 2020;323:1843–4.
11. Liberati A, Altman DG, Tetzlaff J, Mulrow C, Gøtzsche PC, Ioannidis JPA, et al. The PRISMA statement for reporting systematic reviews and meta-analyses of studies that evaluate healthcare interventions: explanation and elaboration. *BMJ.* 2009;339:b2700.
12. Lin L. Bias caused by sampling error in meta-analysis with small sample sizes. *PLOS ONE.* 2018;13:e0204056.
13. Barendregt JJ, Doi SA, Lee YY, Norman RE, Vos T. Meta-analysis of prevalence. *J Epidemiol Community Health.* 2013;67:974–8.
14. Thompson SG, Higgins JPT. How should meta-regression analyses be undertaken and interpreted? *Stat Med.* 2002;21:1559–73.
15. Core Team RR. A language and environment for statistical computing. Vienna, Austria: R Foundation for Statistical Computing; 2013.
16. Nyaga VN, Arbyn M, Aerts M. Metaprop: a Stata command to perform meta-analysis of binomial data. *Arch Public Health.* 2014;72:39.
17. Huang J-T, Ran R-X, Lv Z-H, Feng L-N, Ran C-Y, Tong Y-Q, et al. Chronological changes of viral shedding in adult inpatients with COVID-19 in Wuhan, China. *Clin Infect Dis.* 2020.
18. Miri SM, Roozbeh F, Omranirad A, Alavian SM. Panic of buying toilet papers: a historical memory or a horrible truth? Systematic review of gastrointestinal manifestations of COVID-19. *Hepat Mon.* 2020;20:e102729.
19. Rodríguez-Morales AJ, Cardona-Ospina JA, Gutiérrez-Ocampo E, Villamizar-Peña R, Holguin-Rivera Y, Escalera-Antezana JP,

- et al. Clinical, laboratory and imaging features of COVID-19: a systematic review and meta-analysis. *Travel Med Infect Dis*. 2020;101623.
20. Cao Y, Liu X, Xiong L, Cai K. Imaging and clinical features of patients with 2019 novel coronavirus SARS-CoV-2: a systematic review and meta-analysis. *J Med Virol*; n/a.
 21. Li L-q, Huang T, Wang Y-q, Wang Z-p, Liang Y, Huang T-b, et al. COVID-19 patients' clinical characteristics, discharge rate, and fatality rate of meta-analysis. *J Med Virol*; n/a.
 22. Wan Y, Shang J, Graham R, Baric RS, Li F. Receptor recognition by the novel coronavirus from Wuhan: an analysis based on decade-long structural studies of SARS coronavirus. *J Virol*. 2020;94.
 23. Liang W, Feng Z, Rao S, Xiao C, Xue X, Lin Z, et al. Diarrhoea may be underestimated: a missing link in 2019 novel coronavirus. *Gut*. 2020.
 24. Zhou P, Yang X-L, Wang X-G, Hu B, Zhang L, Zhang W, et al. Discovery of a novel coronavirus associated with the recent pneumonia outbreak in humans and its potential bat origin. *bioRxiv*. 2020. 2020.01.22.914952.
 25. Letko M, Marzi A, Munster V. Functional assessment of cell entry and receptor usage for SARS-CoV-2 and other lineage B beta-coronaviruses. *Nat Microbiol*. 2020;5:562–9.
 26. Hashimoto T, Perlot T, Rehman A, Trichereau J, Ishiguro H, Paolino M, et al. ACE2 links amino acid malnutrition to microbial ecology and intestinal inflammation. *Nature*. 2012;487:477–81.
 27. Chen Y, Chen L, Deng Q, Zhang G, Wu K, Ni L, et al. The presence of SARS-CoV-2 RNA in feces of COVID-19 patients. *J Med Virol*. 2020.
 28. Lo IL, Lio CF, Cheong HH, Lei CI, Cheong TH, Zhong X, et al. Evaluation of SARS-CoV-2 RNA shedding in clinical specimens and clinical characteristics of 10 patients with COVID-19 in Macau. *Int J Biol Sci*. 2020;16:1698–707.
 29. Chen C, Gao G, Xu Y, Pu L, Wang Q, Wang L, et al. SARS-CoV-2-positive sputum and feces after conversion of pharyngeal samples in patients with COVID-19. *Ann Intern Med*. 2020.
 30. Wolfel R, Corman VM, Guggemos W, Seilmaier M, Zange S, Muller MA, et al. Virological assessment of hospitalized patients with COVID-2019. *Nature*. 2020.
 31. Nicastrì E, D'Abramo A, Faggioni G, De Santis R, Mariano A, Lepore L, et al. Coronavirus disease (COVID-19) in a paucisymptomatic patient: epidemiological and clinical challenge in settings with limited community transmission, Italy February 2020. *Euro Surveill*. 2020;25.
 32. Zhang W, Du R-H, Li B, Zheng X-S, Yang X-L, Hu B, et al. Molecular and serological investigation of 2019-nCoV infected patients: implication of multiple shedding routes. *Emerg Microb Infect*. 2020;9:386–9.
 33. Wu Y, Guo C, Tang L, Hong Z, Zhou J, Dong X, et al. Prolonged presence of SARS-CoV-2 viral RNA in faecal samples. *Lancet Gastroenterol Hepatol*. 2020.
 34. Lin L, Jiang X, Zhang Z, Huang S, Zhang Z, Fang Z, et al. Gastrointestinal symptoms of 95 cases with SARS-CoV-2 infection. *Gut*. 2020.
 35. Lodder W, de Roda Husman AM. SARS-CoV-2 in wastewater: potential health risk, but also data source. *Lancet Gastroenterol Hepatol*. 2020.
 36. La Rosa G, Iaconelli M, Mancini P, Bonanno Ferraro G, Veneri C, Bonadonna L, et al. First detection of SARS-CoV-2 in untreated wastewaters in Italy. *Sci Total Environ*. 2020;736:139652.
 37. Ahmed W, Angel N, Edson J, Bibby K, Bivins A, O'Brien JW, et al. First confirmed detection of SARS-CoV-2 in untreated wastewater in Australia: a proof of concept for the wastewater surveillance of COVID-19 in the community. *Sci Total Environ*. 2020;728:138764.
 38. Ampuero M, Valenzuela S, Valiente-Echeverría F, Soto-Rifo R, Barriga GP, Chnaiderman J, et al. SARS-CoV-2 detection in sewage in Santiago Chile – preliminary results. *medRxiv*. 2020. 2020.07.02.20145177.
 39. Xiao F, Sun J, Xu Y, Li F, Huang X, Li H, et al. Infectious SARS-CoV-2 in feces of patient with severe COVID-19. *Emerg Infect Dis J*. 2020;26.
 40. Lamers MM, Beumer J, van der Vaart J, Knoops K, Puschhof J, Breugem TI, et al. SARS-CoV-2 productively infects human gut enterocytes. *Science*. 2020, eabc1669.
 41. Zhou J, Li C, Liu X, Chiu MC, Zhao X, Wang D, et al. Infection of bat and human intestinal organoids by SARS-CoV-2. *Nat Med*. 2020;26:1077–83.
 42. Randazzo W, Truchado P, Cuevas-Ferrando E, Simón P, Allende A, Sánchez G. SARS-CoV-2 RNA in wastewater anticipated COVID-19 occurrence in a low prevalence area. *Water Res*. 2020;181:115942.
 43. Daughton CG. Wastewater surveillance for population-wide Covid-19: The present and future. *Sci Total Environ*. 2020;736:139631.
 44. Woloshin S, Patel N, Kesselheim AS. False negative tests for SARS-CoV-2 infection – challenges and implications. *N Engl J Med*. 2020;383:e38.
 45. Kortela E, Kirjavainen V, Ahava MJ, Jokiranta ST, But A, Lindahl A, et al. Real-life clinical sensitivity of SARS-CoV-2 RT-PCR test in symptomatic patients. *PLOS ONE*. 2021;16:e0251661.
 46. Zhao Y, Zhao Z, Wang Y, Zhou Y, Ma Y, Zuo W, Single-cell RNA expression profiling of ACE2, the putative receptor of Wuhan 2019-nCoV. *bioRxiv*. 2020. 2020.01.26.919985.
 47. Takahashi T, Wong P, Ellingson M, Lucas C, Klein J, Israelow B, et al. Sex differences in immune responses to SARS-CoV-2 that underlie disease outcomes. *medRxiv: the preprint server for health sciences*. 2020, 2020.06.06.20123414.
 48. Abdullah M, Sudrajat DG, Muzellina VN, Kurniawan J, Rizka A, Utari AP, et al. The value of anal swab RT-PCR for COVID-19 diagnosis in adult Indonesian patients. *BMJ Open Gastroenterol*. 2021;8.
 49. Chen W, Lan Y, Yuan X, Deng X, Li Y, Cai X, et al. Detectable 2019-nCoV viral RNA in blood is a strong indicator for the further clinical severity. *Emerg Microbes Infect*. 2020;9:469–73.
 50. Dreher M, Kersten A, Bickenbach J, Balfanz P, Hartmann B, Cornelissen C, et al. The characteristics of 50 hospitalized COVID-19 patients with and without ARDS. *Dtsch Arztebl Int*. 2020;117:271–8.
 51. Han C, Duan C, Zhang S, Spiegel B, Shi H, Wang W, et al. Digestive symptoms in COVID-19 patients with mild disease severity: clinical presentation stool viral RNA testing, and outcomes. *Am J Gastroenterol*. 2020;115:916–23.
 52. Jiang X, Luo M, Zou Z, Wang X, Chen C, Qiu J. Asymptomatic SARS-CoV-2 infected case with viral detection positive in stool but negative in nasopharyngeal samples lasts for 42 days. *J Med Virol*. 2020.
 53. Jiehao C, Jin X, Daojiong L, Zhi Y, Lei X, Zhenghai Q, et al. A case series of children with 2019 novel coronavirus infection: clinical and epidemiological features. *Clin Infect Dis*. 2020.
 54. Kujawski SA, Wong KK, Collins JP, Epstein L, Killerby ME, Midgley CM, et al. First 12 patients with coronavirus disease 2019 (COVID-19) in the United States. *medRxiv*. 2020. 2020.03.09.20032896.
 55. Li H, Wang Y, Ji M, Pei F, Zhao Q, Zhou Y, et al. Transmission routes analysis of SARS-CoV-2: a systematic review and case report. *Front Cell Dev Biol*. 2020;8:618.
 56. Lescure F-X, Bouadma L, Nguyen D, Parisey M, Wicky P-H, Behillil S, et al. Clinical and virological data of the first cases of COVID-19 in Europe: a case series. *Lancet Infectious Dis*. 2020;20:697–706.
 57. Pan Y, Zhang D, Yang P, Poon LLM, Wang Q. Viral load of SARS-CoV-2 in clinical samples. *Lancet Infect Dis*. 2020;20:411–2.
 58. Wei X-S, Wang X, Niu Y-R, Ye L-L, Peng W-B, Wang Z-H, et al. Diarrhea is associated with prolonged symptoms and viral carriage in corona virus disease 2019. *Clin Gastroenterol Hepatol*. 2020;18:1753–9, e2.

59. Wolf GK, Glueck T, Huebner J, Muenchhoff M, Hoffmann D, French LE, et al. Clinical and epidemiological features of a family cluster of symptomatic and asymptomatic severe acute respiratory syndrome coronavirus 2 infection. *J Pediatr Infect Dis Soc.* 2020.
60. Xiao F, Tang M, Zheng X, Liu Y, Li X, Shan H. Evidence for gastrointestinal infection of SARS-CoV-2. *Gastroenterology.* 2020.
61. Xing YH, Ni W, Wu Q, Li WJ, Li GJ, Wang WD, et al. Prolonged viral shedding in feces of pediatric patients with coronavirus disease 2019. *J Microbiol Immunol Infect.* 2020;53:473–80.
62. Xiong XL, Wong KK, Chi SQ, Zhou AF, Tang JQ, Zhou LS, et al. Comparative study of the clinical characteristics and epidemiological trend of 244 COVID-19 infected children with or without GI symptoms. *Gut.* 2020.
63. Xu Y, Li X, Zhu B, Liang H, Fang C, Gong Y, et al. Characteristics of pediatric SARS-CoV-2 infection and potential evidence for persistent fecal viral shedding. *Nat Med.* 2020;26:502–5.
64. Yang Z, Li G, Dai X, Liu G, Li G, Jie Y. [Three cases of novel coronavirus pneumonia with viral nucleic acids still positive in stool after throat swab detection turned negative]. *Chin J Dig.* 2020;40. E002.
65. Young BE, Ong SWX, Kalimuddin S, Low JG, Tan SY, Loh J, et al. Epidemiologic features and clinical course of patients infected with SARS-CoV-2 in Singapore. *JAMA.* 2020;323:1488–94.
66. Zautner AE, Bauswein M, Dörschug A, Blaschk S, Lugert R, Ellenrieder V, et al. High proportion of SARS-CoV-2 RNA persistence in IgG-positive patients with COVID-19. Available at SSRN: <https://ssrn.com/abstract=3605269> 2020.
67. Zhang J, Wang S, Xue Y. Fecal specimen diagnosis 2019 novel coronavirus-infected pneumonia. *J Med Virol.* 2020;92:680–2.
68. Zeng L, Xia S, Yuan W, Yan K, Xiao F, Shao J, et al. Neonatal early-onset infection with SARS-CoV-2 in 33 neonates born to mothers with COVID-19 in Wuhan, China. *JAMA Pediatrics.* 2020;174:722–5.
69. Zheng S, Fan J, Yu F, Feng B, Lou B, Zou Q, et al. Viral load dynamics and disease severity in patients infected with SARS-CoV-2 in Zhejiang province, China January–March 2020: retrospective cohort study. *BMJ.* 2020;369:m1443.