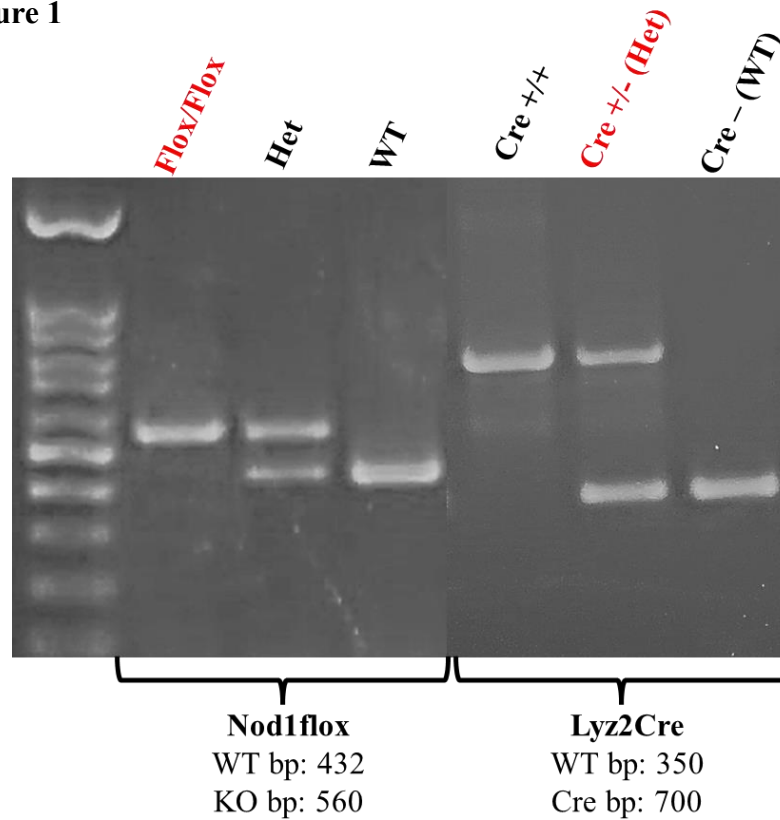


Supplementary Figure 1



Nod1flox primer:

Forward Sequence (5'-3'): GTGAAGCCAAAGGGTCAGCA

Reverse Sequence (5'-3'): CAATGGGGTGCCTTCCATCT

Lyz2Cre primer:

oIMR3066 - CCCAGAAATGCCAGATTAGC - Mutant

oIMR3067 - CTTGGGCTGCCAGAATTTCTC - Common

oIMR3068 - TTACAGTCGGCCAGGCTGAC - Wild type

Figure S1. Mouse Genotyping Strategy. Representative agarose gel image illustrating the genotyping strategy used to identify mice carrying the WT or floxed allele and the Lyz2Cre transgene. The Nod1 primers recognize the wild type as well as the floxed gene. The Lyz2Cre primers are specific for the wild type or mutant gene or recognize both (Common).

Supplementary Figure 2

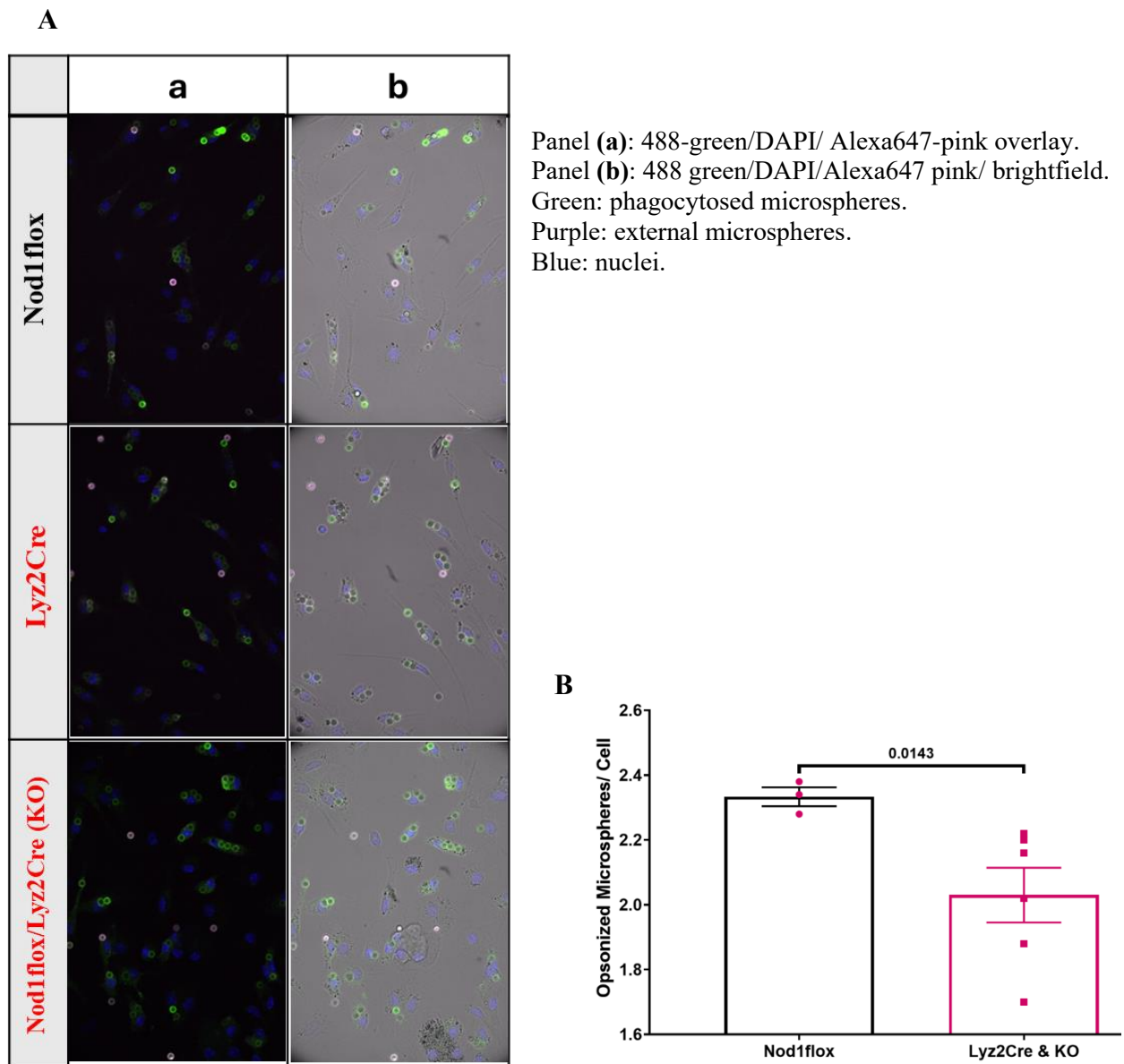


Figure S2. Phagocytosis assays in bone marrow derived macrophages. Representative confocal images showing phagocytosed (green) and external (purple) microspheres (**A**), quantitative analysis of phagocytosis (**B**). n=3-6/group. Results are mean ± SEM. Student's t test; p=0.0143 vs Nod1^{flox}.