

RESEARCH ARTICLE

# Fine-scale variation in microclimate across an urban landscape shapes variation in mosquito population dynamics and the potential of *Aedes albopictus* to transmit arboviral disease

Courtney C. Murdock<sup>1,2,3,4,5,6\*</sup>, Michelle V. Evans<sup>2,3,4</sup>, Taylor D. McClanahan<sup>7</sup>, Kerri L. Miazgowicz<sup>1,3</sup>, Blanka Tesla<sup>1,3</sup>

**1** Department of Infectious Diseases, College of Veterinary Medicine, University of Georgia, Athens, Georgia, United States of America, **2** Odum School of Ecology, University of Georgia, Athens, Georgia, United States of America, **3** Center for Tropical and Emerging Global Diseases, University of Georgia, Athens, Georgia, United States of America, **4** Center for the Ecology of Infectious Diseases, Odum School of Ecology, University of Georgia, Athens, Georgia, United States of America, **5** Center for Vaccines and Immunology, College of Veterinary Medicine, University of Georgia, Athens, Georgia, United States of America, **6** University of Georgia Riverbasin Center, University of Georgia, Athens, Georgia, United States of America, **7** Mathematics, University of Arkansas Little Rock, Little Rock, Arkansas, United States of America

\* [cmurdock@uga.edu](mailto:cmurdock@uga.edu)



**OPEN ACCESS**

**Citation:** Murdock CC, Evans MV, McClanahan TD, Miazgowicz KL, Tesla B (2017) Fine-scale variation in microclimate across an urban landscape shapes variation in mosquito population dynamics and the potential of *Aedes albopictus* to transmit arboviral disease. PLoS Negl Trop Dis 11(5): e0005640. <https://doi.org/10.1371/journal.pntd.0005640>

**Editor:** Samuel V. Scarpino, Santa Fe Institute, UNITED STATES

**Received:** December 6, 2016

**Accepted:** May 12, 2017

**Published:** May 30, 2017

**Copyright:** © 2017 Murdock et al. This is an open access article distributed under the terms of the [Creative Commons Attribution License](https://creativecommons.org/licenses/by/4.0/), which permits unrestricted use, distribution, and reproduction in any medium, provided the original author and source are credited.

**Data Availability Statement:** All data files are available from the Dryad database (<http://datadryad.org/review?doi=doi:10.5061/dryad.s3953>).

**Funding:** The Population Biology of Infectious Diseases REU program (PI: John Drake) in the Odum School of Ecology, University of Georgia is funded by: National Science Foundation (DBI-1156707, EF-1442417), <https://www.nsf.gov/>, and National Institutes of Health (U54GM111274),

## Abstract

Most statistical and mechanistic models used to predict mosquito-borne disease transmission incorporate climate drivers of disease transmission by utilizing environmental data collected at geographic scales that are potentially coarser than what mosquito populations may actually experience. Temperature and relative humidity can vary greatly between indoor and outdoor environments, and can be influenced strongly by variation in landscape features. In the *Aedes albopictus* system, we conducted a proof-of-concept study in the vicinity of the University of Georgia to explore the effects of fine-scale microclimate variation on mosquito life history and vectorial capacity (VC). We placed *Ae. albopictus* larvae in artificial pots distributed across three replicate sites within three different land uses—urban, suburban, and rural, which were characterized by high, intermediate, and low proportions of impervious surfaces. Data loggers were placed into each larval environment and in nearby vegetation to record daily variation in water and ambient temperature and relative humidity. The number of adults emerging from each pot and their body size and sex were recorded daily. We found mosquito microclimate to significantly vary across the season as well as with land use. Urban sites were in general warmer and less humid than suburban and rural sites, translating into decreased larval survival, smaller body sizes, and lower per capita growth rates of mosquitoes on urban sites. Dengue transmission potential was predicted to be higher in the summer than the fall. Additionally, the effects of land use on dengue transmission potential varied by season. Warm summers resulted in a higher predicted VC on the cooler, rural sites, while warmer, urban sites had a higher predicted VC during the cooler fall season.

<https://www.nih.gov/>. The funders had no role in the study design, data collection and analysis, decision to publish, or preparation of the manuscript.

**Competing interests:** The authors have declared that no competing interests exist.

## Author summary

Environmental factors influence the dynamics of mosquito-borne disease transmission. Most models used to predict mosquito-borne disease transmission incorporate climate data collected at coarser scales than mosquitoes typically experience. Climate conditions can vary greatly between indoor and outdoor environments, and are influenced by landscape features. We conducted a field experiment with the Asian tiger mosquito to explore how microclimate variation across an urban landscape affects mosquito life history and potential to transmit arboviruses, like dengue. We demonstrate that climate conditions captured by weather stations do not reflect relevant mosquito microclimate, and that subtle variation in mean and diurnal ranges of temperature and relative humidity can lead to appreciable variation in key mosquito / pathogen traits that are important for transmission. Our results have implications for statistical and mechanistic models used to predict variation in transmission across seasons, regions, and land uses, but also for building in realistic environmental variation in laboratory work on mosquito-pathogen interactions. Finally, the variation in microclimate we observed across land use was subtle; likely because our study site is a relatively small city. Nevertheless, these translated into considerable differences in mosquito traits and dengue transmission potential, suggesting these effects could be much larger in more expansive cities.

## Introduction

Epidemics of dengue, chikungunya, and Zika are spreading explosively through the Americas creating a public health crisis that places an estimated 3.9 billion people living within 120 different countries at risk. This pattern began with the growing distribution of dengue virus (DENV) over the past 30 years, infecting an estimated 390 million people per year. More recent invaders, chikungunya (CHIKV) and now Zika virus (ZIKV), are rapidly following suit. CHIKV emerged in the Americas in 2013 and has caused 1.8 million suspected cases from 44 countries and territories ([www.paho.org](http://www.paho.org)) to date. In 2015, outbreaks of Zika virus (ZIKV) have spread throughout the Americas, resulting in over 360,000 suspected cases, with likely many more going unreported ([www.paho.org](http://www.paho.org)).

Temperature is one of the key environmental drivers influencing the dynamics and distribution of these diseases [1–10]. Variation in temperature can profoundly impact mosquito population dynamics [11], mosquito life history traits [12–18], mosquito immune responses [19–22], and measures of parasite / pathogen fitness (prevalence, titers, and the extrinsic incubation period) [1, 10, 23, 24]. In addition to environmental temperature, variation in precipitation [25–27] and relative humidity [28] also drive vector-borne disease transmission. Most statistical and mechanistic models used to predict mosquito borne disease transmission incorporate climate drivers of disease transmission by utilizing environmental data collected from general circulation weather models [1, 29–32], down-scaled weather data [33], outdoor weather stations [34, 35], or remotely sensed land surface temperature data [36–38]. While working with these data is methodologically tractable, mosquitoes do not experience environmental variation at such coarse scales [39, 40]. Temperature and relative humidity can vary greatly between indoor and outdoor environments [41, 42], and can be influenced strongly by variation in landscape features such as density of housing, housing material, vegetation cover, impervious surface cover, waste heat generation, and distance to water [18, 28, 43–48]. Thus, the microclimate a mosquito vector experiences will be dependent upon its dispersal ability

(can be < 100 m for some species [49]) and the habitats it visits throughout its life. In addition, many modeling efforts characterize environmental conditions through measures of mean monthly temperature, relative humidity, and precipitation. Yet, there is a growing body of theoretical and empirical work demonstrating that daily fluctuations in temperature, and likely relative humidity, are important for both mosquito and parasite / pathogen traits that mediate transmission [1, 2, 5, 43].

We conducted a semi-field study examining differences in microclimate and mosquito life history traits across a heterogeneous urban landscape to address the above concerns. Specifically, 1) how does mosquito relevant microclimate vary across an urban landscape, 2) how does this variation affect mosquito life history traits, and 3) what are the implications of microclimate variation for vectorial capacity? We investigated these questions in Athens-Clarke County, GA, focusing on the invasive *Aedes albopictus* (Asian tiger mosquito) system due to its widespread distribution throughout the state [50], as well as its role as an important vector for dengue, chikungunya, and Zika viruses in many parts of the world [51–54].

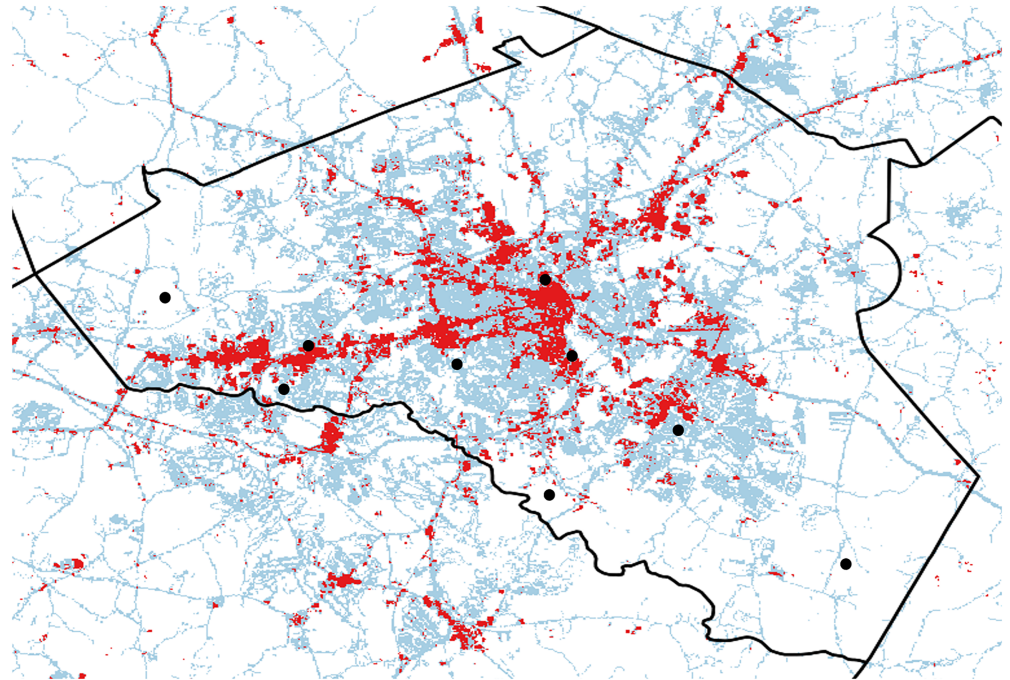
## Methods

### Site selection

We explored microclimate variation across three levels of land use categories characteristic of an urban landscape: urban, suburban and rural. We used an impervious surface map of Georgia generated by the Natural Resources Spatial Analysis Lab at the University of Georgia (<http://narsal.uga.edu/glut/data-stats/georgia-impervious-surface-trends>) for Athens-Clarke County, Georgia, U.S.A. to distinguish sites into these three land use categories. We defined urban, suburban, and rural sites as those with impervious surface scores within the following binned ranges: 55–100%, 5–50%, and 0%, respectively. We then created a new impervious surface map for Athens-Clarke County and selected three replicate sites within each land use category (Fig 1). Final site selection across Athens-Clarke County was ultimately constrained to sites that we could get permission to access. We did ensure that there was greater than 5 miles between sites, sites were interspersed across the county, and they were of the same area (30 m<sup>2</sup>, Fig 1).

### Larval development experiment

Within each site, we evenly distributed (10 m apart) and staked six black flower pots (Home Depot 480064–1001) in the ground at the base of vegetation (e.g. grass stands, brush, trees) in full shade. Within each pot, we placed a wide-mouth glass bell jar (~1 L, Walmart, 550797441), and added 300 mL of leaf infusion and 30 first instar *Aedes albopictus* larvae. Leaf infusion was made a week prior to the start of the experiment. Live oak (*Quercus virginiana*) leaves were collected from the field and dried in an oven (50°C) for 72 hrs to ensure all water had evaporated from the leaf tissue. We then infused 80 grams of dried leaf material and 3 grams of a 1:1 yeast-albumin mixture in 20 L of deionized water for 3 days prior to use. To monitor variation in larval and adult mosquito microclimate across each site, we added a data logger (Monarch Instruments: RFID Temperature Track-It logger) to each jar and hung a logger (Monarch Instruments: RFID Temperature and Relative Humidity Track-It logger) in vegetation near each jar (~ 3 feet above the ground). Loggers recorded instantaneous measurements of temperature and relative humidity every 10 min throughout the course of the study. Jars were then screened to prevent escape of emerging adults and a wire cage (8 in x 8 in) with plastic vinyl lining the roof was placed over top and staked into the ground to exclude animals and excess rainfall.



**Fig 1. An impervious surface map of Athens-Clarke County, Georgia, U.S.** Spatial pixels (30 m<sup>2</sup>) were binned according to proportion of impervious surface, with high, intermediate, and low proportion of impervious surface corresponding to urban (red), suburban (blue), and rural (white) sites, respectively. From this map, we selected three sites (black dots, 30 m<sup>2</sup>) from each land use class for the artificial pot experiments.

<https://doi.org/10.1371/journal.pntd.0005640.g001>

Pots were visited daily and emerged adults were removed. We quantified the total number of adults emerging per day, and recorded the sex and wing length of each emerged adult. Wing length was used as a proxy of mosquito body condition due to its associations with female mosquito fecundity, survival, and vector competence for arboviruses [55–57]. One wing was taken from each individual upon emergence, and measurements were taken from the tip of the wing (excluding fringe) to the distal end of the alula using a dissecting scope and micrometer eye piece. This experiment was conducted twice, once in early summer (June 15–July 14, 2015) and once in the fall (September 7–October 10, 2015) to estimate any effects of season on our response variables.

### Calculating per capita mosquito population growth rates ( $r$ )

We used the following Eq (1) to calculate per capita intrinsic population growth rates ( $r$ ) for each experimental pot across all sites [58],

$$r = \frac{\ln\left(\frac{1}{N_0} \sum A_x f(w_x)\right)}{D + \left(\frac{\sum x A_x f(w_x)}{\sum A_x f(w_x)}\right)}, \quad (1)$$

in which  $N_0$  represents the initial number of females,  $A_x$  the number of adult females emerging per day  $x$ ,  $w_x$  the mean wing length of females emerging on day  $x$ ,  $D$  the delay between female emergence and first oviposition, and  $f(w_x)$  predicts the numbers of female offspring produced by females of a given wing size. Because 1<sup>st</sup> instar mosquito larvae cannot be reliably sexed, and 30 1<sup>st</sup> instar larvae were deposited in each experimental pot, we assumed  $N_0$  to be 15

females. We also assumed  $D = 14.2$  days for *Ae. albopictus* [58]. We used the following linear function,  $f(w_x) = -121.240 + 78.02w_x$ , to describe the relationship between mean wing size and fecundity [59]. While other relationships between wing length and egg production exist [60–62], we chose the relationship characterized in [59] for two reasons. First, this study used variation in mean temperatures to generate *Ae. albopictus* adults of different sizes, which ensured we were predicting egg production from variation in wing lengths generated from an environmental variable we allowed to vary in our study. Second, other environmental manipulations (e.g. density, food availability) can alter mosquito body condition or teneral reserves relative to variation in environmental temperature [56], potentially resulting in different relationships between wing length and egg production.

## Statistical analysis

To estimate the effects of microclimate and land use on the larval development and mosquito emergence rates, we used Cox proportional hazard models (R version 3.3.0, package ‘survival’) to assess how these predictors influenced probability of mosquito emergence across pots in each season (*summer* and *fall*). Each model included land use (*rural*, *suburban*, and *urban*) and the following microclimate covariates (*daily temperature mean*, *minimum*, and *maximum* in each experimental pot and average *daily relative humidity mean*, *minimum*, and *maximum*) as predictor variables. Additionally, to control for correlated observations, pot was included as a cluster variable in the analysis. We achieved our final models by using a multidirectional stepwise selection method designed to minimize Akaike Information Criterion (AIC) [63]. All predictors included in final models were checked by using chi-squared tests to verify the assumption that the hazard functions are proportional over time for each strata was upheld. Influential observations and nonlinearity were investigated by removing one observation for each covariate and observing how much the regression coefficients changed and plotting the Martingale residuals (the difference between the observed and expected number of events at each time interval) against each covariate, respectively.

We used general linear mixed effects models (JMP Pro 12.1.0) to investigate the effects of season (*summer* and *fall*), land use class (*rural*, *suburban*, and *urban*), and the interaction on metrics of larval microclimate (*average daily mean*, *minimum*, and *maximum temperature* in each experimental pot and *average daily mean*, *minimum*, and *maximum relative humidity*), mosquito body size upon emergence (*wing size*), the per capita mosquito population growth rate,  $r$ , and overall transmission potential. Experimental pot was nested within site as a random factor within each model. Sex, and the interactions with season (*sex x season*) and land use (*sex x land use*), were also included as predictors in the model with wing size as the response variable. Model fit and assumptions of normality were assessed by plotting model residuals and quantile plots, and Tukey HSD adjusted pairwise comparisons were run to compare differences across land use groups and for any significant interactions. Boxplots of raw data for each of our response variables are included in additional supplementary information files (S1, S2 and S3 Figs).

## Estimating the effects of season and land use on transmission potential

To estimate how variation in relevant microclimate across different land uses and season might influence the ability of *Ae. albopictus* to transmit arboviruses, we used a dengue-specific vectorial capacity framework. Vectorial capacity (VC) is a mathematical Expression (2) that describes the daily rate at which future infections arise from one infectious mosquito [10,

64–66]:

$$VC = \frac{ma^2bce^{-\mu/EIR}}{\mu}, \tag{2}$$

where  $m$  represents vector density,  $a$  is the daily probability of a female mosquito taking a blood meal,  $\mu$  is the daily probability of adult mosquito mortality,  $b$  is the probability of transmission from an infectious human to a susceptible mosquito,  $c$  is the probability of transmission from an infectious mosquito to susceptible human, and  $EIR$  is the extrinsic incubation rate of a pathogen. The density of mosquitoes ( $m$ ) was estimated with the following Eq (3):

$$m = \frac{EFDp_{EA}MDR}{\mu^2}, \tag{3}$$

with  $m$  being comprised of the number of eggs laid per female per day ( $EFD$ ), the egg to adult survival probability ( $p_{EA}$ ), the development rate of larvae ( $MDR$ ), and adult daily probability of mortality ( $\mu$ ).

We incorporated both parameter estimates derived from observations in our semi-field experiment ( $p_{EA}$ ,  $MDR$ , and  $EFD$ ) with estimates of parameters from the literature ( $a$ ,  $b$ ,  $c$ ,  $EIR$ ,  $\mu$ ) to calculate the effects of season and land use on vectorial capacity. From our survival analyses in our semi-field experiment, we estimated the probability of egg to adult survival ( $p_{EA}$ ) and the mosquito development rate ( $MDR$ ) as the maximum proportion of adult females emerging across each site and the slope of the inflection point of the cumulative emergence curves, respectively. We also estimated the number of eggs laid per female per day ( $EFD$ ) by taking the number of expected eggs laid per gonotrophic cycle based on body size, using the linear relationship between eggs laid and wing length ( $y = 78.02x - 121.24$ ) [59]. Because there is uncertainty in our estimates of  $EFD$  that is introduced from the allometric relationship of wing size and egg production [59], we used Monte Carlo simulations to incorporate this uncertainty into our estimates of vectorial capacity. We first generated a variance-covariance matrix from the linear regression of wing size and egg production to generate a contour using the *mvtnorm* package in R. This generated a distribution of wing sizes that we can sample to estimate fecundity. For each pot, we used a random sample of 999 wing lengths to calculate associated egg production values. These were then divided by the expected lifespan ( $1/\mu$ ) for each pot to generate an  $EFD$  estimate for each pot. These  $EFD$  values were then used to estimate a pot-level vectorial capacity, and the average vectorial capacity for each season and land use. Because the number of samples will be artificially inflated by the Monte Carlo permutations, we used the number of sites per season and land use as the true sample size  $n$  in our standard error calculations.

To estimate the effects of daily mean temperature ( $T$ ) variation across our sites and with season on parameters in vectorial capacity that we did not measure ( $a$ ,  $b$ ,  $c$ ,  $EIR$ , and  $\mu$ ), we used two non-linear functions described in Mordecai et al. [35]. The Briere thermal Eq (4) is used to explain asymmetric, non-linear relationships of traits with mean temperature,

$$x(t) = cT(T - T_o)\sqrt{(T_m - T)}, \tag{4}$$

while the quadratic Eq (5) is used to explain symmetric relationships,

$$x(t) = c(T - T_o)(T - T_m). \tag{5}$$

In both functions,  $T_o$  is the daily minimum temperature,  $T_m$  as the daily maximum temperature, and  $c$  is a fit parameter with values for these parameters taken from Mordecai et al. [35]. In order to estimate potential effects of variation in diurnal temperature ranges across our sites

with land use and season on these parameters, we used rate summation [43, 67] Eq (6) defined as

$$x = \int r(T(t))dt, \tag{6}$$

where a given trait ( $x$ ) is defined as a rate ( $r$ ) that adjusts instantaneously to temperature ( $T$ ), which in turn is a function of time ( $t$ ). Thus, for each hourly change in mean temperature, we used the Briere Eq (4) to estimate the biting rate ( $a$ ), transmission probabilities associated with vector competence ( $b, c$ ), and the extrinsic incubation rate ( $EIR$ ). We used the Quadratic Eq (5) for mosquito mortality ( $\mu$ ). Selection criteria for using the Briere vs. the Quadratic curves for each parameter are outlined in Mordecai et al. [35]. We then summed the proportional hourly changes in parameter estimates across the course of the experiment to incorporate the effect of diurnal temperature fluctuation on each parameter estimate.

## Results

### The effect of season and land use on mosquito microclimate

We found that the larval microclimate mosquitoes experienced significantly varied with time of season and with land use (Table 1, Fig 2). We did not observe any significant interactions between season and land use, suggesting that the effects of land use on mosquito microclimate were consistent across the summer and fall experiments. Due to larval data logger failure, we were unable to track daily water temperatures across a total of six pots ( $n = 48$  pots) in the summer and one pot ( $n = 53$ ) in the fall; however, as the failure was equally distributed across treatments, we do not believe this significantly affected our results.

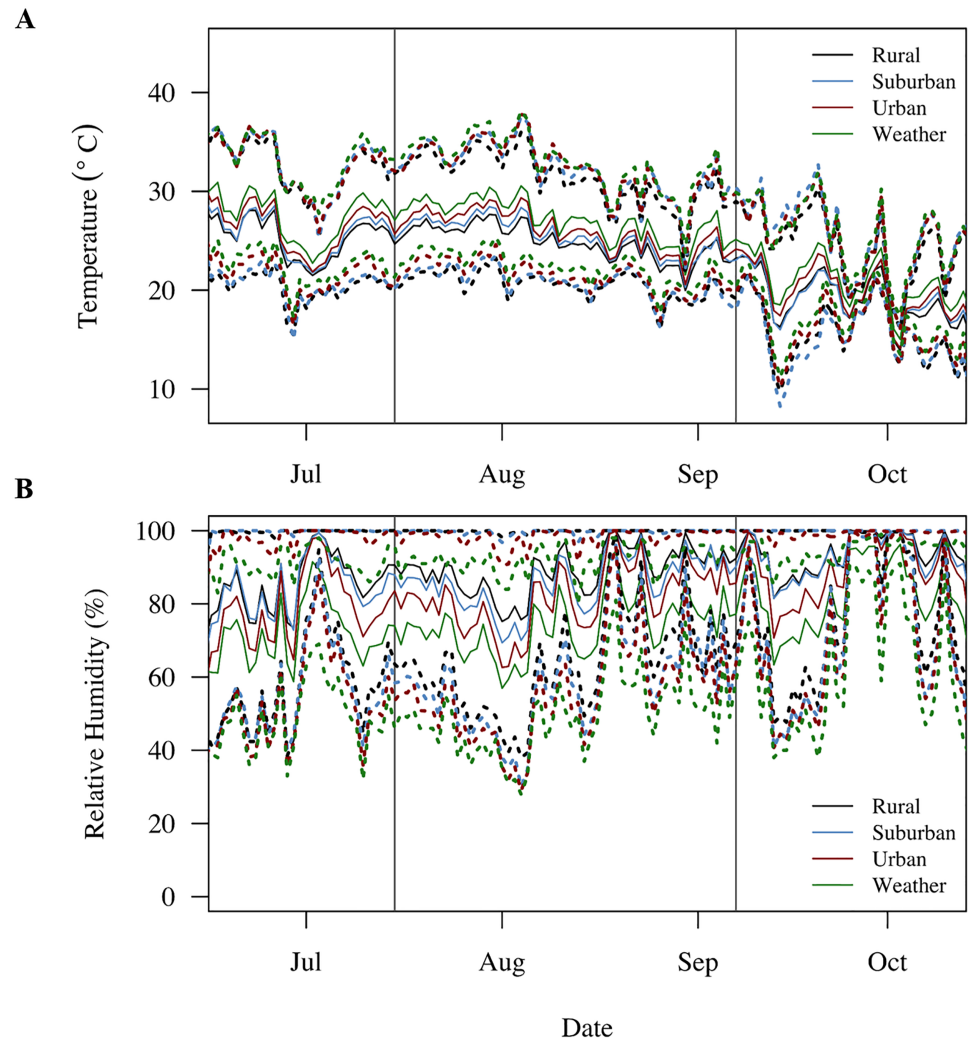
As expected, summer temperatures were on average higher than fall temperatures, with significantly higher daily mean (summer:  $26.0^{\circ}\text{C} \pm 0.08^{\circ}\text{C}$ ; fall:  $20.5^{\circ}\text{C} \pm 0.08^{\circ}\text{C}$ ), minimum (summer:  $22.4^{\circ}\text{C} \pm 0.07^{\circ}\text{C}$ ; fall:  $15.6^{\circ}\text{C} \pm 0.07^{\circ}\text{C}$ ), and maximum water temperatures (summer:  $29.6^{\circ}\text{C} \pm 0.12^{\circ}\text{C}$ ; fall:  $24.5^{\circ}\text{C} \pm 0.12^{\circ}\text{C}$ ). Additionally, experimental pots in the summer were subject to lower daily mean (summer:  $82.8\% \pm 0.30\%$ ; fall:  $92.8\% \pm 0.29\%$ ) and minimum relative humidity (summer:  $55.9\% \pm 0.63\%$ ; fall:  $74.8\% \pm 0.60\%$ ). We did not include maximum relative humidity in our analyses because the daily maximum relative humidity across all sites and seasons was consistently close to 100% (Fig 2; S2 Fig). These seasonal differences in daily temperature and relative humidity resulted in summer mosquitoes experiencing a lower

**Table 1. The effects of season, land use, and potential interactions on daily microclimate.**

| Factors            | daily mean |         |         | daily minimum |         |         | daily maximum |         |         | diurnal range |        |         |
|--------------------|------------|---------|---------|---------------|---------|---------|---------------|---------|---------|---------------|--------|---------|
|                    | d.f.       | F       | p       | d.f.          | F       | p       | d.f.          | F       | p       | d.f.          | F      | p       |
| <i>temperature</i> |            |         |         |               |         |         |               |         |         |               |        |         |
| season             | 1          | 7329.58 | <0.0001 | 1             | 6851.07 | <0.0001 | 1             | 1215.54 | <0.0001 | 1             | 69.91  | <0.0001 |
| land use           | 2          | 3.74    | 0.0307  | 2             | 4.62    | 0.0151  | 2             | 78.04   | 0.0016  | 2             | 5.40   | 0.0076  |
| season x land use  | 2          | 1.05    | 0.3592  | 2             | 3.04    | 0.0585  | 2             | 13.20   | 0.1955  | 2             | 0.09   | 0.9174  |
| <i>humidity</i>    |            |         |         |               |         |         |               |         |         |               |        |         |
| season             | 1          | 774.17  | <0.0001 | 1             | 594.33  | <0.0001 | -             | -       | -       | 1             | 564.93 | <0.0001 |
| land use           | 2          | 53.88   | <0.0001 | 2             | 9.49    | 0.0003  | -             | -       | -       | 2             | 4.70   | 0.0134  |
| season x land use  | 2          | 2.68    | 0.0793  | 2             | 1.36    | 0.2726  | -             | -       | -       | 2             | 2.49   | 0.0932  |

Results from mixed effects models investigating the effects of season (summer vs. fall), land use (rural, suburban, urban), and the interaction on different daily measures of microclimate. Experimental pot nested within site was included as a random factor.

<https://doi.org/10.1371/journal.pntd.0005640.t001>



**Fig 2. Daily variation in temperature and relative humidity.** Ambient mean (solid lines), minimum (lower dotted lines), and maximum (upper dotted lines) daily temperature (A) and relative humidity (B) were recorded by data loggers across the duration of both experiments on urban (red), suburban (blue), and rural (black) sites and by the local weather station (green) on campus.

<https://doi.org/10.1371/journal.pntd.0005640.g002>

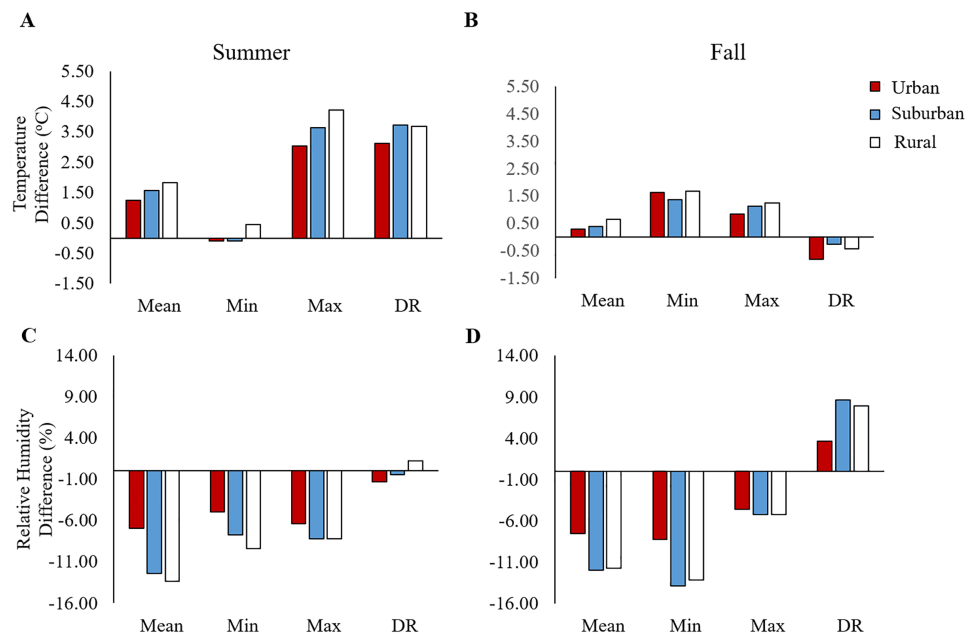
diurnal temperature range (summer:  $7.3^{\circ}\text{C} \pm 0.13^{\circ}\text{C}$ ; fall:  $8.9^{\circ}\text{C} \pm 0.12^{\circ}\text{C}$ ) and higher diurnal relative humidity range (summer:  $43.0\% \pm 0.63\%$ ; fall:  $25.0\% \pm 0.61\%$ ) across all sites.

Urban sites were on average warmer than rural sites (Fig 2). Urban sites were characterized by higher daily mean temperatures (Tukey HSD: urban vs. rural,  $p = 0.0234$ ; urban vs. suburban, N.S.; suburban vs. rural, N.S.) and maximum temperatures (Tukey HSD: urban vs. rural,  $p = 0.0011$ ; suburban vs. urban, N.S.; suburban vs. rural, N.S.). Interestingly, daily minimum temperatures were similar across suburban and urban sites, with larvae on rural sites experiencing significantly lower daily minimum temperatures (Tukey HSD: rural vs. suburban,  $p = 0.0123$ ; suburban vs. urban, N.S.; urban vs. rural, N.S.). Urban sites were also significantly drier. Urban sites had lower daily mean relative humidity (Tukey HSD: urban vs. suburban,  $p < 0.0001$ ; urban vs. rural,  $p < 0.0001$ , rural vs. suburban, N.S.) and minimum relative humidity (Tukey HSD: urban vs. suburban,  $p = 0.0023$ ; urban vs. rural,  $p = 0.0007$ ). Finally, land use significantly affected fluctuations in diurnal temperature (urban:  $8.5^{\circ}\text{C} \pm 0.40^{\circ}\text{C}$ ; suburban:



7.9°C ± 0.13°C; rural: 8.0°C ± 0.14°C) and relative humidity (urban: 36.1% ± 0.85%; suburban: 33.2% ± 0.85%; rural: 32.7% ± 0.87%). Urban sites on average experienced wider fluctuations in diurnal temperature (Tukey HSD: urban vs. suburban,  $p = 0.0023$ ; urban vs. rural,  $p = 0.0007$ , suburban vs. rural, N.S.) and relative humidity (Tukey HSD: urban vs. suburban,  $p = 0.0473$ ; urban vs. rural,  $p = 0.0183$ ; and suburban vs. rural, N.S.) than suburban and rural sites (but note that the comparison in mean diurnal humidity ranges between urban and suburban sites is only marginally significant).

While the daily climate data collected by the local weather station do track the daily variation in temperature and relative humidity recorded by data loggers (Fig 2), the local weather station did not accurately predict daily mean, minimum, maximum, and diurnal ranges of temperature and relative humidity across each land use (Fig 3). Further, the ability of the local weather station to predict urban, suburban, and rural microclimate varied qualitatively across seasons. For example, in the summer, local weather station data over predicted daily mean (by 1.3°C– 1.8°C), maximum, (by 3.0°C– 4.2°C) and diurnal temperature ranges (by 3.1°C– 3.7°C), while under predicting variation in the daily mean (by 6.8% to 13.3%), minimum (5.0%–9.4%), and maximum relative humidity (6.4%–8.2%) across all land uses (Fig 3). In contrast, in the fall, the local weather station was better able to characterize daily mean (a difference of 0.3°C– 0.7°C), maximum (a difference of 0.8°C– 1.2°C), and the diurnal temperature range (-0.8°C to -0.4°C) across these sites. In the fall, like the summer, the local weather station continued to under predict the daily mean, minimum, and maximum relative humidity across urban, suburban, and rural sites. Interestingly, while the difference in relative humidity



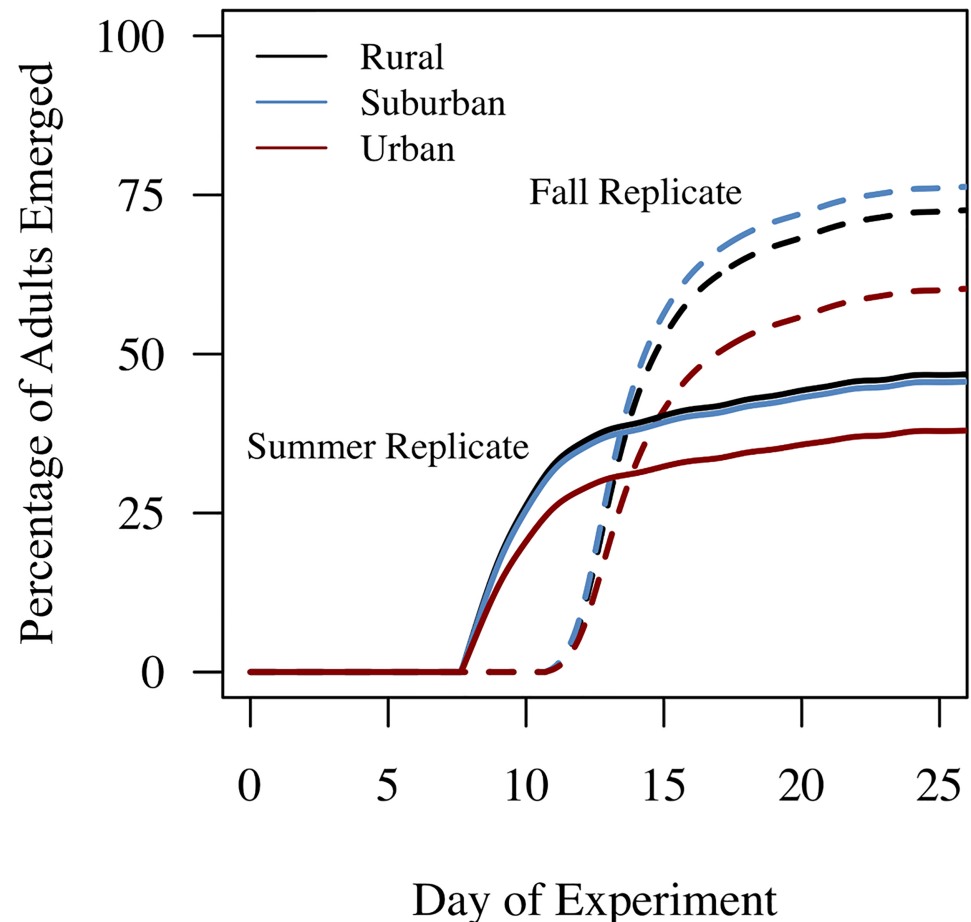
**Fig 3. Local weather station data over or under-predict metrics of mosquito relevant microclimate.** Differences between daily mean, minimum, and maximum values for temperature and relative humidity recorded by data loggers on urban (red), suburban (blue), and rural (white) sites in the summer (A, C) and fall (B, D). Mean and standard errors associated with each land use category reflect estimated marginal means and standard errors from mixed effects models (random factor: pot nested within site) estimating the effects of land use on average daily mean, minimum, and maximum temperatures and relative humidity, while means and standard errors for the weather station data represent data collected from a local weather station at the University of Georgia, Athens GA U.S.A. over the course of each experiment conducted in the summer and fall 2015.

<https://doi.org/10.1371/journal.pntd.0005640.g003>

recorded by the local weather station and our data loggers was minimal in the summer (-1.3%–1.2%), the local weather station in the fall marginally over estimates the relative diurnal humidity range (3.7%–7.8%) in urban, suburban, and rural sites (Fig 3).

### The effect of microclimate, season, and land use on mosquito emergence

Overall, larval survival and the number of adult mosquitoes emerging were much higher in the fall than in the summer (Fig 4). Of approximately 1,620 first instar *Ae. albopictus* placed into the field during each experiment, we had a total of 318 females and 387 males successfully emerge during the summer replicate and 569 females and 623 males emerge during the fall replicate. Additionally, adults began to emerge at an earlier date in the summer (day 7) than in the fall (day 11). We found significant effects of land use on the likelihood of mosquito emergence in both the summer and fall, with a 44% and 47% decrease in the likelihood of mosquito emergence on urban sites relative to suburban and rural sites (which had similar likelihoods of mosquito emergence), respectively (Table 2). There also was an effect of temperature and relative humidity on mosquito emergence in the summer and fall experiments, but interestingly



**Fig 4. Season and land use both affect the probability of adult emergence.** The cumulative percentage of mosquito adults emerging across urban (red), suburban (blue), and rural (black) sites in both the summer (solid lines) and fall (dashed lines).

<https://doi.org/10.1371/journal.pntd.0005640.g004>

**Table 2. The effects of season and land use on mosquito adult emergence.**

| Factors                      | beta    | e <sup>beta</sup> | SE     | z     | p      |
|------------------------------|---------|-------------------|--------|-------|--------|
| <i>summer</i>                |         |                   |        |       |        |
| suburban                     | 0.0818  | 1.0852            | 0.1081 | 0.51  | 0.6095 |
| urban                        | -0.4206 | 0.6567            | 0.1527 | -2.15 | 0.0313 |
| daily min temperature        | -0.1948 | 0.823             | 0.0872 | -2.13 | 0.0336 |
| daily mean relative humidity | -0.0693 | 0.9331            | 0.0212 | -2.64 | 0.0082 |
| daily min relative humidity  | 0.0367  | 1.0374            | 0.0154 | 1.6   | 0.1093 |
| <i>fall</i>                  |         |                   |        |       |        |
| suburban                     | 0.105   | 1.1107            | 0.7744 | 1.08  | 0.2804 |
| urban                        | -0.6299 | 0.5326            | 0.0972 | -2.77 | 0.0057 |
| daily mean temperature       | 0.1922  | 1.2119            | 0.1007 | 1.05  | 0.2932 |
| daily min temperature        | -0.236  | 0.7898            | 0.0896 | -1.57 | 0.1173 |
| daily max temperature        | 0.2518  | 1.2864            | 0.0769 | 2.25  | 0.0243 |
| daily max relative humidity  | -0.2066 | 0.8134            | 0.0446 | -2.93 | 0.0034 |

Final model results from a Cox proportional survival analysis estimating the effects of land use (rural, suburban, urban) and microclimate variables (daily mean, minimum, and maximum values of water temperature and ambient relative humidity) on the likelihood of mosquito emergence during summer and fall 2015.

<https://doi.org/10.1371/journal.pntd.0005640.t002>

these effects differed. Mosquitoes developing in the summer experienced an 18% decrease in the likelihood of emergence with each 1°C increase in the daily *minimum* temperature and a 7% decrease with each 1% increase in daily *mean* relative humidity (Table 2). In contrast, mosquitoes developing in the fall experienced a 28% increase in the likelihood of emergence with each 1°C increase in daily *maximum* temperature and a 19% decrease with every 1% increase in daily *maximum* humidity (Table 2). Together, these results suggest that higher temperatures on urban sites may decrease the likelihood of mosquito emergence through increased larval mortality, and that temperature variation throughout the day has qualitatively different effects on mosquito development and emergence in the summer than the fall.

### Effects of microclimate, season, and land use on wing size and *r*

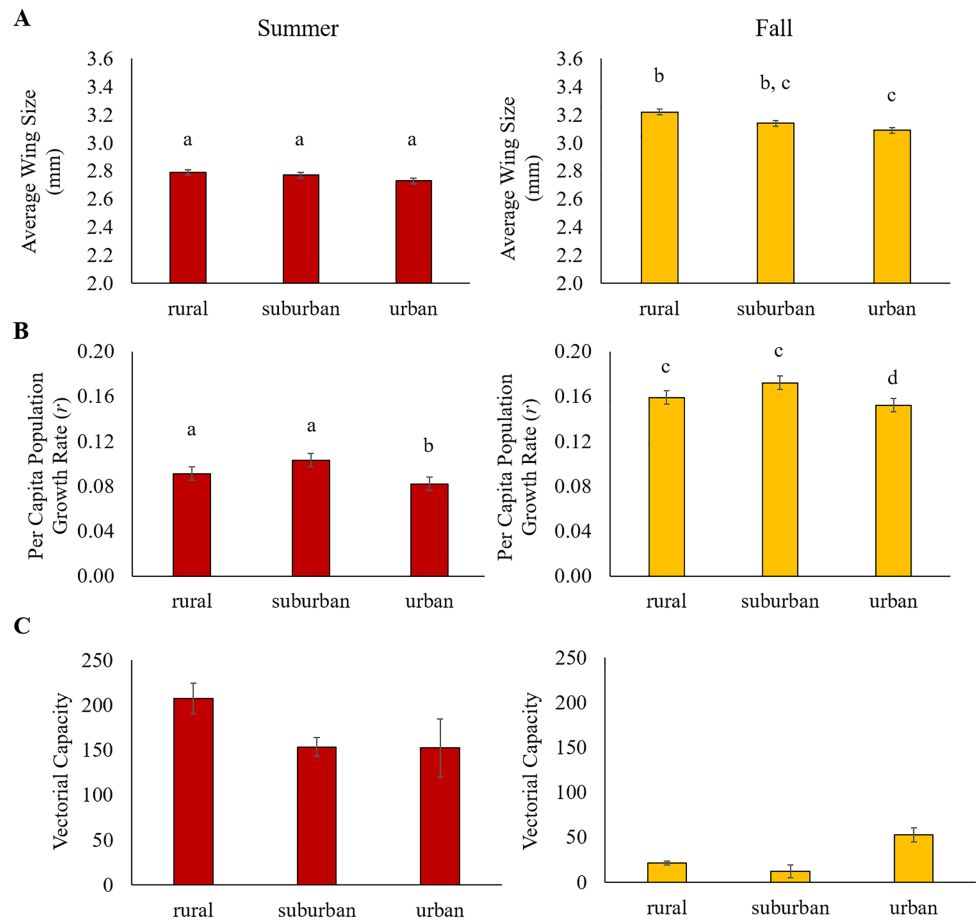
We found significant effects of sex, season, and land use on the size of emerging adult mosquitoes (Table 3, Fig 5). Overall, female mosquitoes were larger than male mosquitoes (females:

**Table 3. The effects of sex, season, land use and possible interactions on mosquito wing size, per capita growth rates (*r*), and vectorial capacity.**

| Factors           | wing size |         |         | <i>r</i> |        |         | vectorial capacity |       |         |
|-------------------|-----------|---------|---------|----------|--------|---------|--------------------|-------|---------|
|                   | d.f.      | F       | p       | d.f.     | F      | p       | d.f.               | F     | p       |
| sex               | 2         | 2670.26 | <0.0001 | -        | -      | -       | -                  | -     | -       |
| season            | 1         | 1590.73 | <0.0001 | 1        | 117.14 | <0.0001 | 1                  | 18.76 | <0.0001 |
| land use          | 2         | 5.48    | 0.0069  | 2        | 3.58   | 0.0313  | 2                  | 3.71  | 0.056   |
| season x land use | 1         | 4.52    | 0.011   | 1        | 0.50   | 0.6077  | 1                  | 4.24  | 0.041   |
| sex x season      | 1         | 183.42  | <0.0001 | -        | -      | -       | -                  | -     | -       |

Results from a mixed effects model analysis with backward elimination investigating the effects of sex (male, female), season (summer, fall), land use (rural, suburban, urban) and all possible interactions on mosquito wing size, and the effects of season, land use and the interaction on mosquito per capita growth rates (*r*). Experimental pot nested within site was included as a random factor.

<https://doi.org/10.1371/journal.pntd.0005640.t003>



**Fig 5. Season and land use have qualitatively different effects on mosquito per capita growth rates and dengue transmission potential.** The effects of land use on mosquito body size (A), per capita mosquito growth rates (B), and relative vectorial capacity, or transmission potential (C) in the summer (red bars) and fall (yellow bars). Means and standard errors represent estimated marginal means and standard errors from our mixed model analysis.

<https://doi.org/10.1371/journal.pntd.0005640.g005>

3.21 mm ± 0.01 mm; males: 2.71 mm ± 0.01 mm). Mosquitoes emerging in the summer were significantly smaller than those emerging in the fall (summer: 2.77 mm ± 0.01 mm; fall: 3.15 mm ± 0.01 mm), and mosquitoes developing on urban sites emerged as smaller adults (urban: 2.91 mm ± 0.02 mm; suburban: 2.96 mm ± 0.02 mm; rural: 3.01 mm ± 0.02 mm) relative to rural sites (Tukey HSD: urban vs. rural,  $p = 0.0047$ ; urban vs. suburban, N.S.; suburban vs. rural, N.S.). Interestingly, there were significant interactions between season and mosquito sex (*season x sex*) and land use (*season x land use*), suggesting the effects of season on mosquito body size differs for males and females and across land use. For example, female mosquitoes were significantly larger than male mosquitoes (female: 3.21 mm ± 0.01 mm; male: 2.71 mm ± 0.01 mm), however this difference in body size was greater in the fall (female: 2.95 mm ± 0.02 mm; male: 2.58 mm ± 0.01 mm; Tukey HSD: female vs. male,  $p < 0.0001$ ) than the summer (female: 3.46 mm ± 0.01 mm; male: 2.84 mm ± 0.01 mm; Tukey HSD: female vs. male,  $p < 0.0001$ ). Further, there were no significant effects of land use on mosquito body size in the summer (urban: 2.73 mm ± 0.02 mm; suburban: 2.77 mm ± 0.02 mm; rural: 2.79 mm ± 0.02 mm), however in the fall, mosquitoes emerging on urban sites were significantly smaller

(urban: 3.09 mm; suburban: 3.14 mm; rural: 3.22 mm) than those on rural sites (urban vs. rural,  $p = 0.0003$ ; urban vs. suburban, N.S.; suburban vs. rural, N.S.).

Integrating the daily emergence and wing size data into Eq (1), we identified significant effects of season (summer:  $0.09 \pm 0.004$ ; fall:  $0.157 \pm 0.004$ ) and land use (urban:  $0.115 \pm 0.005$ ; suburban:  $0.134 \pm 0.005$ ; rural:  $0.121 \pm 0.005$ ) on mosquito per capita population growth rates ( $r$ , Table 3, Fig 5). Overall, the mosquito per capita growth rate was approximately two times higher in the fall than the summer. Further, the mosquito per capita growth rate was significantly lower on urban sites (Tukey HSD: urban vs. suburban;  $p = 0.0269$ ; urban vs. rural, N.S.; suburban vs. rural, N.S.).

### The effect of land use and season on arbovirus transmission potential

We found mosquito transmission potential to vector dengue to significantly vary across seasons (Table 3, Fig 5). Transmission potential was higher overall in the summer relative to the fall season. Interestingly, the effects of land use on mosquito transmission potential varied depending on time of season (summer: urban,  $152.3 \pm 32.2$ ; suburban,  $153.6 \pm 10.1$ ; rural,  $207.6 \pm 16.9$  and fall: urban,  $52.8 \pm 8.0$ ; suburban,  $12.0 \pm 7.1$ ; rural,  $21.4 \pm 4$ ). The model predicts that during the hot summer, *Ae. albopictus* on rural sites have the highest transmission potential relative to suburban and urban sites. In contrast, in the cooler fall, mosquitoes on urban sites were predicted to have the highest transmission potential (Fig 5). Together these results demonstrate fine-scale variation in transmission potential could potentially occur across an urban landscape, and seasonal shifts in microclimate may result in qualitatively different patterns of arbovirus transmission potential with land use.

### Discussion

To date, the majority of studies investigating the effects of urbanization on mosquito population dynamics and disease transmission have been sampling or modeling studies investigating how the distribution and abundance, feeding preferences, and incidence of diseases vectored by different mosquito species vary across land uses [46, 68–77]. In contrast, there have been a handful of experimental studies in the field that mechanistically link observed variation in mosquito traits and metrics of disease transmission to sources of microclimate variation that exist across human-modified landscapes (*Anopheles* spp. [18, 47, 78], *Culex pipiens* [45], *Aedes albopictus* [79]). Our study, in combination with the previous work, demonstrates that relevant microclimate variation in the field (rather than coarser environmental manipulations in the lab) can translate into significant heterogeneity in mosquito life history traits, and ultimately disease transmission potential.

Across both the summer and fall, we observed urban microclimates to be significantly warmer and less humid than non-urban sites, which is reflective of the urban heat island (UHI) effect [80]. This is consistent with other studies showing that urban centers can have different temperature [81–83] and precipitation regimes [84–86] than surrounding areas due to significant modifications to the land-surface structure [44] and increases in the production of waste heat [44]. In other systems, these changes have led to shifts in organism phenology (plants [87–89]), life history (e.g. insect pests, ants, fruit bats [90–93]), and overwintering behavior (mosquitoes [83]), all of which can have significant implications for vector-borne disease transmission [76, 83]. Further, because our study site (Athens, Georgia) is a relatively small city, the observed effects of land use on fine-scale variation in microclimate could be much larger in more expansive cities with greater temperature differentials between urban cores and surrounding areas ( $3^{\circ}\text{C}$ - $10^{\circ}\text{C}$  differential [79, 80, 83]).

Despite the subtle effects of land use on mosquito microclimate, we still observed noticeable effects on larval survival, larval development rates, and adult mosquito body sizes, which translated into estimated differences in intrinsic population growth rates and overall transmission potential. This reinforces findings from a diversity of laboratory studies on *Ae. aegypti* and *Ae. albopictus* demonstrating the effects of relatively large changes in mean temperature [1, 13, 15, 24, 60, 94–100] and diurnal temperature range [1, 7, 101–103] on a diversity of mosquito life history traits (e.g. survival, biting rate, fecundity, larval development, vector competence, and viral extrinsic incubation period). We found mosquitoes developing on urban sites experienced lower survival in the larval environment, emerged as smaller adults, and experienced lower per capita growth rates than on non-urban sites, which could be due to urban sites being in general warmer than non-urban sites. Other similar studies report increases in mosquito development times [45, 79] on urban sites and an increase in adult mosquito emergence [79], which we did not observe.

Surprisingly, different components dictating the diurnal range of temperature and relative humidity were important for larval survival. Overall, in the hot summer, the probability of adult mosquito emergence decreased with higher daily thermal minimums. In contrast, in the cooler fall, increases in the daily maximum temperatures corresponded to increases in the number of adults emerging. Despite having higher average daily thermal maximum temperatures relative to non-urban sites, mosquitoes developing on urban sites still experienced higher larval mortality in the fall. This suggests other unmeasured sources of variation with land use might also influence and have larger effects on larval survival (micro-biotic activity in larval environments, exposure to insecticides, variation in vegetation cover, etc.) on these sites [104, 105]. Variation in relative humidity was also a predictor for the probability of adult emergence across these sites, and like temperature, different metrics of relative humidity were important across different seasons. Interestingly, in both the summer and fall, increases in either the daily relative humidity mean or maximum resulted in proportional decreases in the probability of adult emergence. While an increase in relative humidity has been shown to improve adult mosquito longevity and activity [106–108], it can result in decreases in surface tension of aquatic environments [109], which in turn can increase pupal mortality and decrease the probability of adult emergence in a diversity of mosquito species [110]. To the best of our knowledge, this is the first report of variation in relative humidity affecting the likelihood of larval survival and adult emergence and demonstrates that microclimate variation can have opposing effects on larval and adult traits that are relevant for fitness and transmission.

Variation in daily temperature and relative humidity, as well as the observed variation in mosquito body size with land use and season, could have significant implications for other, unmeasured mosquito traits that are important for arbovirus transmission. For example, variation in both mean temperature and diurnal temperature range in the lab have been shown to impact the daily probability of adult survival ( $\mu$ ), female gonotrophic cycles and biting rates ( $a$ ), the number of eggs females produce per day ( $EFD$ ), vector competence ( $bc$ ) and the extrinsic incubation period ( $EIP$ ) for a diversity of mosquito species and pathogens (e.g. *Anopheles* [10, 43], *Culex* [23, 111, 112], *Aedes* [7, 101]). Modeling studies have linked increased precipitation and relative humidity to increased disease incidence (e.g. dengue and malaria) [113–117], likely through the negative effects of low relative humidity (e.g. < 40% relative humidity) on mosquito longevity [107] and activity [108]. Finally, the observed variation in mosquito body size across land use and seasons were consistent with mosquito body sizes reported in other studies and could further compound the effects of microclimate variation on traits like the daily probability of adult survival ( $\mu$ ) [118–120], egg production [60–62], and vector competence [95, 121]. For example, observed variation in average wing sizes of mosquitoes across our sites from the summer to the fall (2.7–3.2 mm) could result in individual females

producing between 86 and 132 eggs / gonotrophic cycle [59] and result in a 3 fold increase in the probability of dissemination of chikungunya [121].

We used a temperature dependent vectorial capacity equation parameterized for *Ae. albopictus* [35] to predict how dengue transmission potential varies across urban, suburban, and rural sites and with season. While the vectorial capacity formula ignores some potentially important sources of variation (e.g. underlying the mosquito-human interaction), it provides a framework for estimating the relative importance of key mosquito / pathogen parameters and the effects of environmental variation on these parameters [1, 43, 122]. Relative vectorial capacity was predicted to be lower in the fall relative to the summer despite the fact that per capita mosquito population growth rates were predicted to be higher in the fall due to increased mosquito survival and egg production associated with increased body sizes. This is due to the negative effect of cooler temperatures on daily probability of mosquito biting (*a*), the extrinsic incubation rate of dengue (*EIR*), and the probabilities of transmission (*b*, *c*) [35], which ultimately result in a smaller proportion of the mosquito population that is infectious and biting at this time of season. We also found arbovirus transmission potential to vary with land use, and the effects of land use on vectorial capacity depended on time of season. These results suggest that the environmental suitability for arbovirus transmission will be dependent upon the shape of the non-linear relationships mosquito and pathogen traits share with temperature, the daily average habitat temperatures and their proximity to the thermal optimum of this non-linear response, and how the effects of daily temperature fluctuation integrate with daily mean habitat temperatures to impact trait performance, and ultimately transmission potential.

This study captures how mosquito life history, population growth rates, and transmission potential respond to variation in microclimate with land use and season. However, there could be variation in other factors that we did not quantify in this study that could ultimately be more important for transmission. Variation in quantity and quality of larval habitat, adult resting habitat, access to hosts, and insecticide application with land use will also likely influence mosquito population dynamics, densities, and transmission potential [73, 123–126]. Further, while environmental conditions shape the potential distribution and magnitude of disease vectors, socio-economic and demographic factors (e.g. variation in human population density, outdoor recreation, housing quality, etc.), human behavior and cultural variation, as well as mosquito feeding preferences will determine the level of human exposure and the realized transmission risk [127, 128]. Thus, even though transmission potential is predicted to be lower in the fall than the summer, seasonal changes in human behavior may result in higher transmission risk in the fall when cooler temperatures encourage more outdoor activity. Likewise, transmission risk may actually be higher in the summer on urban relative to rural sites due to urban sites having higher human population densities. Finally, the replication associated with this study was relatively low, which could introduce uncertainty in our results inherent with small sample sizes.

Most studies that consider the role of climate in vector-borne disease transmission use climate data reported from local weather stations. Our proof of concept study demonstrates that the climate conditions captured by local weather station data do not reflect the microclimates mosquitoes experience, and that subtle variation in mean and diurnal ranges of temperature and relative humidity can lead to appreciable variation in key mosquito / pathogen life history traits that are important for transmission. Greater effort is needed to quantify the activity space mosquitoes occupy and the conditions of relevant transmission environments. This will not only be important for predicting variation in transmission potential and risk across seasons, geographic regions, and land uses, but also for building realistic environmental variation in future laboratory work on mosquito-pathogen interactions.

## Supporting information

**S1 Fig. Boxplots of mean daily mean, minimum, and maximum temperature and diurnal temperature range data by land use and by season (block 1 = summer; block 2 = fall).**  
(TIF)

**S2 Fig. Boxplots of mean daily mean, minimum, range of relative humidity by land use and season (block 1 = summer; block 2 = fall).**  
(TIF)

**S3 Fig. Boxplots of the total number of adults emerging per pot, the wing size of emerging adults, and the estimated intrinsic population growth rate ( $r$ ) by land use and by season (block 1 = summer; block 2 = fall).**  
(TIF)

## Acknowledgments

We thank Mark Brown and Anne Elliot for intellectual and facility support of this project by providing us with *Aedes albopictus* for our experiments. We also thank John Drake, members of the Murdock lab group, and Maria Huertas-Diaz and Jennifer Cyr for intellectual and personnel support of this project. Any opinions, findings, and conclusions or recommendations expressed in this material are those of the author(s) and do not necessarily reflect the views of the National Science Foundation.

## Author Contributions

**Conceptualization:** CCM TDM.

**Data curation:** CCM MVE.

**Formal analysis:** CCM MVE.

**Funding acquisition:** CCM TDM.

**Investigation:** CCM MVE TDM KLM BT.

**Methodology:** CCM.

**Project administration:** CCM.

**Resources:** CCM.

**Software:** CCM MVE.

**Supervision:** CCM.

**Validation:** CCM MVE.

**Visualization:** CCM MVE.

**Writing – original draft:** CCM MVE.

**Writing – review & editing:** CCM MVE TDM KLM BT.

## References

1. Liu-Helmerson J, Stenlund H, Wilder-Smith A, Rocklov J. Vectorial capacity of *Aedes aegypti*: effects of temperature and implications for global dengue epidemic potential. PLoS ONE. 2014; 9(3).



2. Paaijmans KP, Blanford S, Bell AS, Blanford JI, Read AF, Thomas MB. Influence of climate on malaria transmission depends on daily temperature variation. *Proc Natl Acad Sci U S A*. 2010; 107(34):15135–9. <https://doi.org/10.1073/pnas.1006422107> PMID: 20696913
3. Paaijmans KP, Read AF, Thomas MB. Understanding the link between malaria risk and climate. *Proc Natl Acad Sci U S A*. 2009; 106(33):13844–9. <https://doi.org/10.1073/pnas.0903423106> PMID: 19666598
4. Blanford JI, Blanford S, Crane RG, Mann ME, Paaijmans KP, Schreiber KV, et al. Implications of temperature variation for malaria parasite development across Africa. *Scientific Reports*. 2013; 3:1–11. 1300 <https://doi.org/10.1038/srep01300> PMID: 23419595
5. Paaijmans KP, Heinig RL, Seliga RA, Blanford JI, Blanford S, Murdock CC, et al. Temperature variation makes ectotherms more sensitive to climate change. *Global Change Biology*. 2013; 19(8):2373–80. <https://doi.org/10.1111/gcb.12240> PMID: 23630036
6. Siraj AS, Santos-Vega M, Bouma MJ, Yadeta D, Carrascal DR, Pascual M. Altitudinal changes in malaria incidence in highlands of Ethiopia and Colombia. *Science*. 2014; 343(6175):1154–8. <https://doi.org/10.1126/science.1244325> PMID: 24604201
7. Lambrechts L, Paaijmans KP, Fansiri T, Carrington LB, Kramer LD, Thomas MB, et al. Impact of daily temperature fluctuations on dengue virus transmission by *Aedes aegypti*. *Proc Natl Acad Sci U S A*. 2011; 108(18):7460–5. <https://doi.org/10.1073/pnas.1101377108> PMID: 21502510
8. Ruiz-Moreno D, Vargas IS, Olson KE, Harrington LC. Modeling dynamic introduction of Chikungunya virus in the United States. *PLoS Negl Trop Dis*. 2012; 6(11):e1918. <https://doi.org/10.1371/journal.pntd.0001918> PMID: 23209859
9. Ledesma N, Harrington L. Fine-scale temperature fluctuation and modulation of *Dirofilaria immitis* larval development in *Aedes aegypti*. *Vet Parasitol*. 2015;(0). <http://dx.doi.org/10.1016/j.vetpar.2015.02.003>.
10. Mordecai EA, Paaijmans KP, Johnson LR, Balzer C, Ben-Horin T, Moor E, et al. Optimal temperature for malaria transmission is dramatically lower than previously predicted. *Ecol Lett*. 2013; 16(1):22–30. <https://doi.org/10.1111/ele.12015> PMID: 23050931
11. Beck-Johnson LM, Nelson WA, Paaijmans KP, Read AF, Thomas MB, Bjørnstad ON. The effect of temperature on *Anopheles* mosquito population dynamics and the potential for malaria transmission. *PLoS ONE*. 2013; 8(11):e79276. <https://doi.org/10.1371/journal.pone.0079276> PMID: 24244467
12. Christiansen-Jucht C, Parham P, Saddler A, Koella J, Basanez M-G. Temperature during larval development and adult maintenance influences the survival of *Anopheles gambiae* s.s. *Parasit Vectors*. 2014; 7(1):489. <https://doi.org/10.1186/s13071-014-0489-3> PMID: 25367091
13. Delatte H, Gimonneau G, Triboire A, Fontenille D. Influence of temperature on immature development, survival, longevity, fecundity, and gonotrophic cycles of *Aedes albopictus*, vector of chikungunya and dengue in the Indian Ocean. *J Med Entomol*. 2009; 46(1):33–41. PMID: 19198515
14. Impoinvil DE, Cardenas GA, Gihture JI, Mbogo CM, Beier JC. Constant temperature and time period effects on *Anopheles gambiae* egg hatching. *J Am Mosq Control Assoc*. 2007; 23(2):124–30. [https://doi.org/10.2987/8756-971X\(2007\)23\[124:CTATPE\]2.0.CO;2](https://doi.org/10.2987/8756-971X(2007)23[124:CTATPE]2.0.CO;2) PMID: 17847843
15. Monteiro LC, de Souza JR, de Albuquerque CM. Ecllosion rate, development and survivorship of *Aedes albopictus* (Skuse)(Diptera: Culicidae) under different water temperatures. *Neotrop Entomol*. 2007; 36(6):966–71. PMID: 18246274
16. Lyimo EO, Takken W, Koella JC. Effect of rearing temperature and larval density on larval survival, age at pupation, and adult size of *Anopheles gambiae*. *Entomol Exp Appl*. 1992; 63(3):265–71.
17. Zakharova NF, Losev GI, Yakubovich VY. The effect of density and temperature on larval populations of the malaria vector *Anopheles sacharovi*. *Med Parazitol Parazit Bolezni*. 1990;(1):3–7.
18. Afrane YA, Zhou GF, Lawson BW, Githeko AK, Yan GY. Effects of microclimatic changes caused by deforestation on the survivorship and reproductive fitness of *Anopheles gambiae* in Western Kenya highlands. *Am J Trop Med Hyg*. 2006; 74(5):772–8. PMID: 16687679
19. Murdock CC, Blanford S, Luckhart S, Thomas MB. Ambient temperature and dietary supplementation interact to shape mosquito vector competence for malaria. *J Insect Physiol*. 2014; 67:37–44. <https://doi.org/10.1016/j.jinsphys.2014.05.020> PMID: 24911425
20. Murdock CC, Paaijmans KP, Bell AS, King JG, Hillyer JF, Read AF, et al. Complex effects of temperature on mosquito immune function. *Proceedings of the Royal Society B-Biological Sciences*. 2012; 279(1741):3357–66. <https://doi.org/10.1098/rspb.2012.0638> PMID: 22593107
21. Murdock CC, Moller-Jacobs LL, Thomas MB. Complex environmental drivers of immunity and resistance in malaria mosquitoes. *Proceedings of the Royal Society B: Biological Sciences*. 2013; 280(1770). <https://doi.org/10.1098/rspb.2013.2030> PMID: 24048159

22. Murdock CC, Paaijmans KP, Read AF, Cox-Foster D, Thomas MB. Rethinking vector immunology: the role of environmental temperature in shaping resistance. *Nat Rev Microbiol*. 2012; 10(12):869–76. <https://doi.org/10.1038/nrmicro2900> PMID: 23147703
23. Kilpatrick AM, Meola MA, Moudy RM, Kramer LD. Temperature, viral genetics, and the transmission of West Nile virus by *Culex pipiens* mosquitoes. *PLoS Pathog*. 2008; 4(6):1–7. <https://doi.org/10.1371/journal.ppat.1000092> PMID: 18584026
24. Johansson MA, Arana-Vizcarrondo N, Biggerstaff BJ, Staples JE. Incubation periods of yellow fever virus. *Am J Trop Med Hyg*. 2010; 83(1):183–8. <https://doi.org/10.4269/ajtmh.2010.09-0782> PMID: 20595499
25. Bomblies A. Modeling the role of rainfall patterns in seasonal malaria transmission. *Clim Change*. 2012; 112(3–4):673–85. <https://doi.org/10.1007/s10584-011-0230-6>
26. Johansson MA, Dominici F, Glass GE. Local and global effects of climate on dengue transmission in Puerto Rico. *PLoS Negl Trop Dis*. 2009; 3(2):17.
27. Chowell G, Sanchez F. Climate-based descriptive models of dengue fever: the 2002 epidemic in Colima, Mexico. *J Environ Health*. 2006; 68(10):40–4, 55. PMID: 16780000.
28. Nagao Y, Thavara U, Chitnumsup P, Tawatsin A, Chansang C, Campbell-Lendrum D. Climatic and social risk factors for *Aedes* infestation in rural Thailand. *Trop Med Int Health*. 2003; 8(7):650–9. PMID: 12828549
29. Proestos Y, Christophides GK, Ergüler K, Tanarhte M, Waldock J, Lelieveld J. Present and future projections of habitat suitability of the Asian tiger mosquito, a vector of viral pathogens, from global climate simulation. 2015; 370(1665). <https://doi.org/10.1098/rstb.2013.0554> PMID: 25688015
30. Ogden NH, Milka R, Caminade C, Gachon P. Recent and projected future climatic suitability of North America for the Asian tiger mosquito *Aedes albopictus*. *Parasit Vectors*. 2014; 7(1):532. <https://doi.org/10.1186/s13071-014-0532-4> PMID: 25441177
31. Rochlin I, Ninivaggi DV, Hutchinson ML, Farajollahi A. Climate change and range expansion of the Asian tiger mosquito (*Aedes albopictus*) in Northeastern USA: Implications for public health practitioners. *PLoS ONE*. 2013; 8(4). e60874 <https://doi.org/10.1371/journal.pone.0060874> PMID: 23565282
32. Medley KA. Niche shifts during the global invasion of the Asian tiger mosquito, *Aedes albopictus* Skuse (Culicidae), revealed by reciprocal distribution models. *Glob Ecol Biogeogr*. 2010; 19(1):122–33. <https://doi.org/10.1111/j.1466-8238.2009.00497.x>
33. Paaijmans KP, Blanford JI, Crane RG, Mann ME, Ning L, Schreiber KV, et al. Downscaling reveals diverse effects of anthropogenic climate warming on the potential for local environments to support malaria transmission. *Clim Change*. 2014; 125:479–88.
34. Ryan SJ, McNally A, Johnson LR, Mordecai EA, Ben-Horin T, Paaijmans KP, et al. Mapping physiological suitability limits for malaria in Africa under climate change. *Vector-Borne and Zoonotic Diseases*. 2015; 15(12):718–25. <https://doi.org/10.1089/vbz.2015.1822> PMID: 26579951
35. Mordecai E, Cohen J, Evans MV, Gudapati P, Johnson LR, Lippi CA, et al. Detecting the impact of temperature on transmission of Zika, dengue, and chikungunya using mechanistic models. *PLoS Negl Trop Dis*. 2017; 11(4):e0005568. <https://doi.org/10.1371/journal.pntd.0005568>. PMID: 28448507
36. Gomes E, Capinha C, Rocha J, Sousa C. Mapping risk of malaria transmission in mainland Portugal using a mathematical modelling approach. *PLoS ONE*. 2016; 11(11):e0164788. <https://doi.org/10.1371/journal.pone.0164788> PMID: 27814371
37. Anand P. Disease ecology and Japanese encephalities (JE) in Ariyalur town using optical remote sensing data 2016.
38. Palaniyandi M, Anand P, Maniyosai R, Mariappan T, Das P. The integrated remote sensing and GIS for mapping of potential vector breeding habitats, and the Internet GIS surveillance for epidemic transmission control, and management. *environment*. 2016; 7(12):14–6.
39. Potter KA, Arthur Woods H, Pincebourde S. Microclimatic challenges in global change biology. *Glob Chang Biol*. 2013; 19(10):2932–9. <https://doi.org/10.1111/gcb.12257> PMID: 23681970
40. Pincebourde S, Murdock CC, Vickers M, Sears MW. Fine-scale microclimatic variation can shape the responses of organisms to global change in both natural and urban environments. *Integrative and Comparative Biology*. 2016. <https://doi.org/10.1093/icb/icw016> PMID: 27107292
41. Cator LJ, Thomas S, Paaijmans KP, Ravishankaran S, Justin JA, Mathai MT, et al. Characterizing microclimate in urban malaria transmission settings: a case study from Chennai, India. *Malar J*. 2013; 12(84):1–10. 84 <https://doi.org/10.1186/1475-2875-12-84> PMID: 23452620
42. Paaijmans KP, Imbahale SS, Thomas MB, Takken W. Relevant microclimate for determining the development rate of malaria mosquitoes and possible implications of climate change. *Malar J*. 2010; 9:196. <https://doi.org/10.1186/1475-2875-9-196> PMID: 20618930

43. Murdock CC, Sternberg ED, Thomas MB. Malaria transmission potential could be reduced with current and future climate change. *Scientific Reports*. 2016; 6:27771. <https://doi.org/10.1038/srep27771> PMID: [27324146](https://pubmed.ncbi.nlm.nih.gov/27324146/)
44. Larsen L. Urban climate and adaptation strategies. *Frontiers in Ecology and the Environment*. 2015; 13(9):486–92. <https://doi.org/10.1890/150103>
45. Townroe S, Callaghan A. British container breeding mosquitoes: the impact of urbanisation and climate change on community composition and phenology. *PLoS ONE*. 2014; 9(4). e95325 <https://doi.org/10.1371/journal.pone.0095325> PMID: [24759617](https://pubmed.ncbi.nlm.nih.gov/24759617/)
46. Kamdem C, Tene Fossog B, Simard F, Etouna J, Ndo C, Kengne P, et al. Anthropogenic habitat disturbance and ecological divergence between incipient species of the malaria mosquito *Anopheles gambiae*. *PLoS ONE*. 2012; 7(6):22.
47. Afrane YA, Little TJ, Lawson BW, Githeko AK, Yan GY. Deforestation and vectorial capacity of *Anopheles gambiae* giles mosquitoes in malaria transmission, Kenya. *Emerg Infect Dis*. 2008; 14(10):1533–8. <https://doi.org/10.3201/eid1410.070781> PMID: [18826815](https://pubmed.ncbi.nlm.nih.gov/18826815/)
48. Baruah K, Rai RN. The impact of housing structures on filarial infection. *Jpn J Infect Dis*. 2000; 53(3):107–10. PMID: [10957707](https://pubmed.ncbi.nlm.nih.gov/10957707/)
49. Harrington LC, Scott TW, Lerdthusnee K, Coleman RC, Costero A, Clark GG, et al. Dispersal of the dengue vector *Aedes aegypti* within and between rural communities. *Am J Trop Med Hyg*. 2005; 72(2):209–20. Epub 2005/03/03. PMID: [15741559](https://pubmed.ncbi.nlm.nih.gov/15741559/).
50. Hahn MB, Eisen RJ, Eisen L, Boegler KA, Moore CG, McAllister J, et al. Reported distribution of *Aedes* (Stegomyia) *aegypti* and *Aedes* (Stegomyia) *albopictus* in the United States, 1995–2016 (Diptera: Culicidae). *J Med Entomol*. 2016. <https://doi.org/10.1093/jme/tjw072> PMID: [27282817](https://pubmed.ncbi.nlm.nih.gov/27282817/)
51. Chouin-Carneiro T, Vega-Rua A, Vazeille M, Yebakima A, Girod R, Goindin D, et al. Differential susceptibilities of *Aedes aegypti* and *Aedes albopictus* from the Americas to Zika virus. *PLoS Negl Trop Dis*. 2016; 10(3).
52. Grard G, Caron M, Mombo IM, Nkoghe D, Mboui Ondo S, Jiolle D, et al. Zika virus in Gabon (Central Africa)—2007: a new threat from *Aedes albopictus*? *PLoS Negl Trop Dis*. 2014; 8(2):e2681. <https://doi.org/10.1371/journal.pntd.0002681> PMID: [24516683](https://pubmed.ncbi.nlm.nih.gov/24516683/)
53. Wong PS, Li MZ, Chong CS, Ng LC, Tan CH. *Aedes* (Stegomyia) *albopictus* (Skuse): a potential vector of Zika virus in Singapore. *PLoS Negl Trop Dis*. 2013; 7(8).
54. Delatte H, Paupy C, Dehecq JS, Thiria J, Failloux AB, Fontenille D. *Aedes albopictus*, vector of chikungunya and dengue viruses in Reunion Island: biology and control. *Parasite*. 2008; 15(1):3–13. <https://doi.org/10.1051/parasite/2008151003> PMID: [18416242](https://pubmed.ncbi.nlm.nih.gov/18416242/)
55. Price DP, Schilkey FD, Ulanov A, Hansen IA. Small mosquitoes, large implications: crowding and starvation affects gene expression and nutrient accumulation in *Aedes aegypti*. *Parasit Vectors*. 2015; 8(252):015–0863.
56. Reiskind MH, Zarrabi AA. Is bigger really bigger? Differential responses to temperature in measures of body size of the mosquito, *Aedes albopictus*. *J Insect Physiol*. 2012; 58(7):911–7. <https://doi.org/10.1016/j.jinsphys.2012.04.006> PMID: [22543181](https://pubmed.ncbi.nlm.nih.gov/22543181/)
57. Alto BW, Reiskind MH, Lounibos LP. Size alters susceptibility of vectors to dengue virus infection and dissemination. *Am J Trop Med Hyg*. 2008; 79(5):688–95. Epub 2008/11/05. PMID: [18981505](https://pubmed.ncbi.nlm.nih.gov/18981505/);
58. Livdahl TP, Willey MS. Prospects for an invasion: competition between *Aedes albopictus* and native *Aedes triseriatus*. *Science*. 1991; 253(5016):189–91. PMID: [1853204](https://pubmed.ncbi.nlm.nih.gov/1853204/)
59. Lounibos LP, Suarez S, Menendez Z, Nishimura N, Escher RL, O'Connell SM, et al. Does temperature affect the outcome of larval competition between *Aedes aegypti* and *Aedes albopictus*? *J Vector Ecol*. 2002; 27(1):86–95. PMID: [12125878](https://pubmed.ncbi.nlm.nih.gov/12125878/)
60. Briegel H, Timmermann SE. *Aedes albopictus* (Diptera: Culicidae): physiological aspects of development and reproduction. 2001; 38(4):566–71. <https://doi.org/10.1603/0022-2585-38.4.566>
61. Briegel H. Fecundity, metabolism, and body size in *Anopheles* (Diptera, Culicidae), vectors of malaria. *J Med Entomol*. 1990; 27(5):839–50. PMID: [2231621](https://pubmed.ncbi.nlm.nih.gov/2231621/)
62. Briegel H. Metabolic relationship between female body size, reserves, and fecundity of *Aedes aegypti* *J Insect Physiol*. 1990; 36(3):165–72. [https://doi.org/10.1016/0022-1910\(90\)90118-y](https://doi.org/10.1016/0022-1910(90)90118-y)
63. Venables WN, Ripley BD. *Modern Applied Statistics with S*: Springer; 2002. p. 271–300.
64. Garrett-Jones C, Shidrawi G. Malaria vectorial capacity of a population of *Anopheles gambiae*: an exercise in epidemiological entomology. *Bull World Health Organ*. 1969; 40:531–45. PMID: [5306719](https://pubmed.ncbi.nlm.nih.gov/5306719/)
65. Garrett-Jones C. Prognosis for interruption of malaria transmission through assessment of the mosquito's vectorial capacity. *Nature*. 1964; 204:1173–5. <https://doi.org/10.1038/2041173a0> PMID: [14268587](https://pubmed.ncbi.nlm.nih.gov/14268587/)

66. Garrett-Jones C, Grab B. The assessment of insecticidal impact on the malaria mosquito's vectorial capacity, from data on the proportion of parous females. *Bull World Health Organ.* 1964; 31:71–86. Epub 1964/01/01. PMID: [14230896](#);
67. Worner SP. Performance of phenological models under variable temperature regimes: consequences of the Kaufmann or rate summation effect. *Environ Entomol.* 1992; 21(4):689–99. WOS: A1992JJ17400002.
68. Faraji A, Egizi A, Fonseca DM, Unlu I, Crepeau T, Healy SP, et al. Comparative host feeding patterns of the Asian tiger mosquito, *Aedes albopictus*, in urban and suburban Northeastern USA and implications for disease transmission. *PLoS Negl Trop Dis.* 2014; 8(8).
69. Leisnham PT, LaDeau SL, Juliano SA. Spatial and temporal habitat segregation of mosquitoes in urban Florida. *PLoS ONE.* 2014; 9(3). e91655 <https://doi.org/10.1371/journal.pone.0091655> PMID: [24621592](#)
70. Leisnham PT, Juliano SA. Spatial and temporal patterns of coexistence between competing *Aedes* mosquitoes in urban Florida. *Oecologia.* 2009; 160(2):343–52. <https://doi.org/10.1007/s00442-009-1305-1> PMID: [19263086](#)
71. Cox J, Grillet ME, Ramos OM, Amador M, Barrera R. Habitat segregation of dengue vectors along an urban environmental gradient. *The American Journal of Tropical Medicine and Hygiene.* 2007; 76(5):820–6. PMID: [17488898](#)
72. Richards SL, Ponnusamy L, Unnasch TR, Hassan HK, Apperson CS. Host-feeding patterns of *Aedes albopictus* (Diptera: Culicidae) in relation to availability of human and domestic animals in suburban landscapes of central North Carolina. *J Med Entomol.* 2006; 43(3):543–51. [https://doi.org/10.1603/0022-2585\(2006\)43\[543:hpoaad\]2.0.co;2](https://doi.org/10.1603/0022-2585(2006)43[543:hpoaad]2.0.co;2) PMID: [16739414](#)
73. LaDeau SL, Leisnham PT, Biehler D, Bodner D. Higher mosquito production in low-income neighborhoods of Baltimore and Washington, DC: understanding ecological drivers and mosquito-borne disease risk in temperate cities. *Int J Environ Res Public Health.* 2013; 10(4):1505–26. <https://doi.org/10.3390/ijerph10041505> PMID: [23583963](#)
74. Tsuda Y, Suwonkerd W, Chawprom S, Prajakwong S, Takagi M. Different spatial distribution of *Aedes aegypti* and *Aedes albopictus* along an urban-rural gradient and the relating environmental factors examined in three villages in northern Thailand. *J Am Mosq Control Assoc.* 2006; 22(2):222–8. [https://doi.org/10.2987/8756-971X\(2006\)22\[222:DSDOAA\]2.0.CO;2](https://doi.org/10.2987/8756-971X(2006)22[222:DSDOAA]2.0.CO;2) PMID: [17019767](#)
75. Araujo RV, Albertini MR, Costa-da-Silva AL, Suesdek L, Franceschi NCS, Bastos NM, et al. São Paulo urban heat islands have a higher incidence of dengue than other urban areas. *The Brazilian Journal of Infectious Diseases.* 2015; 19(2):146–55. <http://dx.doi.org/10.1016/j.bjid.2014.10.004>. PMID: [25523076](#)
76. Akhtar R, Gupta PT, Srivastava AK. Urbanization, urban heat island effects and dengue outbreak in Delhi. In: Akhtar R, editor. *Climate Change and Human Health Scenario in South and Southeast Asia.* Cham: Springer International Publishing; 2016. p. 99–111.
77. Robert MA, Christofferson RC, Silva NJB, Vasquez C, Mores CN, Wearing HJ. Modeling mosquito-borne disease spread in U.S. urbanized areas: the case of dengue in Miami. *PLoS ONE.* 2016; 11(8): e0161365. <https://doi.org/10.1371/journal.pone.0161365> PMID: [27532496](#)
78. Afrane YA, Zhou G, Lawson BW, Githeko AK, Yan G. Life-table analysis of *Anopheles arabiensis* in western Kenya highlands: Effects of land covers on larval and adult survivorship. *Am J Trop Med Hyg.* 2007; 77(4):660–6. PMID: [17978067](#)
79. Li Y, Kamara F, Zhou G, Puthiyakunnon S, Li C, Liu Y, et al. Urbanization increases *Aedes albopictus* larval habitats and accelerates mosquito development and survivorship. *PLoS Negl Trop Dis.* 2014; 8(11):e3301. <https://doi.org/10.1371/journal.pntd.0003301> PMID: [25393814](#)
80. Kalnay E, Cai M. Impact of urbanization and land-use change on climate. *Nature.* 2003; 423(6939):528–31. <https://doi.org/10.1038/nature01675> PMID: [12774119](#)
81. Oke TR. The energetic basis of the urban heat island. *Quarterly Journal of the Royal Meteorological Society.* 1982; 108(455):1–24.
82. Arnfield AJ. Two decades of urban climate research: a review of turbulence, exchanges of energy and water, and the urban heat island. *International journal of climatology.* 2003; 23(1):1–26.
83. Misslin R, Telle O, Daude E, Vaguet A, Paul RE. Urban climate versus global climate change-what makes the difference for dengue? *Ann N Y Acad Sci.* 2016. Epub 2016/05/21. PMID: [27197685](#)
84. Lacke MC, Mote TL, Shepherd JM. Aerosols and associated precipitation patterns in Atlanta. *Atmos Environ.* 2009; 43(28):4359–73. <https://doi.org/10.1016/j.atmosenv.2009.04.022>
85. Shepherd JM, Carter M, Manyin M, Messen D, Burian S. The impact of urbanization on current and future coastal precipitation: a case study for Houston. *Environment and Planning B-Planning & Design.* 2010; 37(2):284–304. <https://doi.org/10.1068/b34102t>

86. Niyogi D, Pyle P, Lei M, Arya SP, Kishtawal CM, Shepherd M, et al. Urban modification of thunderstorms: an observational storm climatology and model case study for the Indianapolis urban region. *Journal of Applied Meteorology and Climatology*. 2011; 50(5):1129–44. <https://doi.org/10.1175/2010jamc1836.1>
87. Jochner S, Alves-Eigenheer M, Menzel A, Morellato LPC. Using phenology to assess urban heat islands in tropical and temperate regions. *International Journal of Climatology*. 2013; 33(15):3141–51. <https://doi.org/10.1002/joc.3651>
88. Shustack DP, Rodewald AD, Waite TA. Springtime in the city: exotic shrubs promote earlier greenup in urban forests. *Biol Invasions*. 2009; 11(6):1357–71. <https://doi.org/10.1007/s10530-008-9343-x>
89. Mimet A, Pellissier V, Quenol H, Aguejedad R, Dubreuil V, Roze F. Urbanisation induces early flowering: evidence from *Platanus acerifolia* and *Prunus cerasus*. *Int J Biometeorol*. 2009; 53(3):287–98. <https://doi.org/10.1007/s00484-009-0214-7> PMID: 19219464
90. Dale AG, Frank SD. Urban warming trumps natural enemy regulation of herbivorous pests. *Ecol Appl*. 2014; 24(7):1596–607.
91. Meineke EK, Dunn RR, Sexton JO, Frank SD. Urban warming drives insect pest abundance on street trees. *PLoS ONE*. 2013; 8(3):1–7.
92. Angilletta MJ Jr., Wilson RS, Niehaus AC, Sears MW, Navas CA, Ribeiro PL. Urban physiology: city ants possess high heat tolerance. *PLoS ONE*. 2007; 2(2):e258. <https://doi.org/10.1371/journal.pone.0000258> PMID: 17327918
93. Parris KM, Hazell DL. Biotic effects of climate change in urban environments: The case of the grey-headed flying-fox (*Pteropus poliocephalus*) in Melbourne, Australia. *Biol Conserv*. 2005; 124(2):267–76. <https://doi.org/10.1016/j.biocon.2005.01.035>
94. Muturi EJ, Kim CH, Alto BW, Berenbaum MR, Schuler MA. Larval environmental stress alters *Aedes aegypti* competence for Sindbis virus. *Trop Med Int Health*. 2011; 16(8):955–64. <https://doi.org/10.1111/j.1365-3156.2011.02796.x> PMID: 21564427
95. Muturi EJ, Alto BW. Larval environmental temperature and insecticide exposure alter *Aedes aegypti* competence for arboviruses. *Vector-Borne and Zoonotic Diseases*. 2011; 11(8):1157–63. <https://doi.org/10.1089/vbz.2010.0209> PMID: 21453010
96. Rueda L, Patel K, Axtell R, Stinner R. Temperature-dependent development and survival rates of *Culex quiquefasciatus* and *Aedes aegypti* (Diptera: Culicidae). *J Med Entomol*. 1990; 27. <https://doi.org/10.1093/jmedent/27.5.892>
97. Brady O, Johansson M, Guerra C, Bhatt S, Golding N, Pigott D, et al. Modelling adult *Aedes aegypti* and *Aedes albopictus* survival at different temperatures in laboratory and field settings. *Parasit Vectors*. 2013; 6:351. <https://doi.org/10.1186/1756-3305-6-351> PMID: 24330720
98. Zouache K, Fontaine A, Vega-Rua A, Mousson L, Thiberge JM, Lourenco-De-Oliveira R, et al. Three-way interactions between mosquito population, viral strain and temperature underlying chikungunya virus transmission potential. *Proc Biol Sci*. 2014; 281(1792).
99. Alto BW, Bettinardi D. Temperature and dengue virus infection in mosquitoes: independent effects on the immature and adult stages. *Am J Trop Med Hyg*. 2013; 88(3):497–505. <https://doi.org/10.4269/ajtmh.12-0421> PMID: 23382163
100. Chan M, Johansson MA. The incubation periods of Dengue viruses. *PLoS ONE*. 2012; 7(11):30.
101. Carrington LB, Seifert SN, Willits NH, Lambrechts L, Scott TW. Large diurnal temperature fluctuations negatively influence *Aedes aegypti* (Diptera: Culicidae) life-history traits. *J Med Entomol*. 2013; 50(1):43–51. PMID: 23427651
102. Carrington LB, Armijos MV, Lambrechts L, Scott TW. Fluctuations at a low mean temperature accelerate dengue virus transmission by *Aedes aegypti*. *PLoS Negl Trop Dis*. 2013; 7(4).
103. Carrington LB, Seifert SN, Armijos MV, Lambrechts L, Scott TW. Reduction of *Aedes aegypti* vector competence for dengue virus under large temperature fluctuations. *Am J Trop Med Hyg*. 2013; 88(4):689–97. <https://doi.org/10.4269/ajtmh.12-0488> PMID: 23438766
104. Marcombe S, Mathieu RB, Pocquet N, Riaz M-A, Poupardin R, Selior S, et al. Insecticide resistance in the dengue vector *Aedes aegypti* from Martinique: distribution, mechanisms and relations with environmental factors. *PLoS ONE*. 2012; 7(2). e30989 <https://doi.org/10.1371/journal.pone.0030989> PMID: 22363529
105. Leishnam PT, Juliano SA. Impacts of climate, land use, and biological invasion on the ecology of immature *Aedes* mosquitoes: Implications for La Crosse emergence. *EcoHealth*. 2012; 9(2):217–28. <https://doi.org/10.1007/s10393-012-0773-7> PMID: 22692799
106. Okech BA, Gouagna LC, Killeen GF, Knols BGJ, Kabiru EW, Beier JC, et al. Influence of sugar availability and indoor microclimate on survival of *Anopheles gambiae* (Diptera: Culicidae) under semifield

- conditions in western Kenya. *J Med Entomol.* 2003; 40(5):657–63. <https://doi.org/10.1603/0022-2585-40.5.657> PMID: 14596279
107. Bayoh MN. Studies on the development and survival of *Anopheles gambiae* sensu stricto at various temperatures and relative humidities. Durham: University of Durham; 2001.
  108. Rowley WA, Graham CL. The effect of temperature and relative humidity on the flight performance of female *Aedes aegypti*. *J Insect Physiol.* 1968; 14(9):1251–7. PMID: 5761668
  109. Perez-Diaz JL, Alvarez-Valenzuela MA, Garcia-Prada JC. The effect of the partial pressure of water vapor on the surface tension of the liquid water-air interface. *J Colloid Interface Sci.* 2012; 381(1):180–2. Epub 2012/06/22. <https://doi.org/10.1016/j.jcis.2012.05.034> PMID: 22717083.
  110. Singh KRP, Micks DW. The effects of surface tension on mosquito development. *Mosq News.* 1957; 17(2):70–3.
  111. Ciota A, Maccacchiero A, Kilpatrick AM, Kramer LD. The effect of temperature on life history traits of *Culex* mosquitoes. *J Med Entomol.* 2014; 51. <https://doi.org/10.1603/me13003>
  112. Couret J. Meta-analysis of factors affecting ontogenetic development rate in the *Culex pipiens* (Diptera: Culicidae) complex. *Environ Entomol.* 2013; 42(4):614–26. <https://doi.org/10.1603/EN12248> PMID: 23905724
  113. Focks DA, Daniels E, Haile DG, Keesling JE. A simulation model of the epidemiology of urban dengue fever: literature analysis, model development, preliminary validation, and samples of simulation results. *Am J Trop Med Hyg.* 1995; 53(5):489–506. Epub 1995/11/01. PMID: 7485707.
  114. Mount GA, Haile DG, Daniels E. Simulation of management strategies for the blacklegged tick (Acari: Ixodidae) and the Lyme disease spirochete, *Borrelia burgdorferi*. *J Med Entomol.* 1997; 34(6):672–83. Epub 1998/01/24. PMID: 9439122.
  115. Hales S, de Wet N, Maindonald J, Woodward A. Potential effect of population and climate changes on global distribution of dengue fever: an empirical model. *Lancet.* 2002; 360(9336):830–4. Epub 2002/09/24. [https://doi.org/10.1016/S0140-6736\(02\)09964-6](https://doi.org/10.1016/S0140-6736(02)09964-6) PMID: 12243917.
  116. Li T, Yang Z, Wang M. Temperature, relative humidity and sunshine may be the effective predictors for occurrence of malaria in Guangzhou, southern China, 2006–2012. *Parasit Vectors.* 2013; 6:155-. <https://doi.org/10.1186/1756-3305-6-155> PMID: 23721484
  117. Kumar V, Mangal A, Panesar S, Yadav G, Talwar R, Raut D, et al. Forecasting malaria cases using climatic factors in Delhi, India: a time series analysis. *Malaria Research and Treatment.* 2014; 2014:6. <https://doi.org/10.1155/2014/482851> PMID: 25147750
  118. Ameneshewa B, Service M. The relationship between female body size and survival rate of the malaria vector *Anopheles arabiensis* in Ethiopia. *Med Vet Entomol.* 1996; 10:170–2. <https://doi.org/10.1111/j.1365-2915.1996.tb00724.x> PMID: 8744710
  119. Nasci RS. The size of emerging and host-seeking *Aedes aegypti* and the relation of size to blood-feeding success in the field. *J Am Mosq Control Assoc.* 1986; 2(1):61–2. PMID: 3507471
  120. Reisen WK, Milby MM, Bock ME. The effects of immature stress on selected events in the life history of *Culex tarsalis*. *Mosq News.* 1984; 44(3):385–95.
  121. Westbrook CJ, Reiskind MH, Pesko KN, Greene KE, Lounibos LP. Larval environmental temperature and the susceptibility of *Aedes albopictus* Skuse (Diptera: Culicidae) to Chikungunya virus. *Vector-Borne and Zoonotic Diseases.* 2010; 10(3):241–7. <https://doi.org/10.1089/vbz.2009.0035> PMID: 19725768
  122. Moller-Jacobs L, Murdock C, Thomas M. Capacity of mosquitoes to transmit malaria depends on larval environment. *Parasit Vectors.* 2014; 7(1):593. <https://doi.org/10.1186/s13071-014-0593-4> PMID: 25496502
  123. Harrigan RJ, Thomassen HA, Buermann W, Cummings RF, Kahn ME, Smith TB. Economic conditions predict prevalence of West Nile virus. *PLoS ONE.* 2010; 5(11):e15437. <https://doi.org/10.1371/journal.pone.0015437> PMID: 21103053
  124. Dowling Z, Ladeau SL, Armbruster P, Biehler D, Leisnham PT. Socioeconomic status affects mosquito (Diptera: Culicidae) larval habitat type availability and infestation level. *J Med Entomol.* 2013; 50(4):764–72. PMID: 23926774
  125. Reisen W, Meyer R, Tempelis C, Spoechel J. Mosquito abundance and bionomics in residential communities in Orange and Los Angeles Counties, California. *J Med Entomol.* 1990; 27(3):356–67. PMID: 1970608
  126. Reisen WK, Takahashi RM, Carroll BD, Quiring R. Delinquent mortgages, neglected swimming pools, and West Nile virus, California. *Emerg Infect Dis.* 2008; 14(11):1747–9. <https://doi.org/10.3201/eid1411.080719> PMID: 18976560

127. Béguin A, Hales S, Rocklöv J, Åström C, Louis VR, Sauerborn R. The opposing effects of climate change and socio-economic development on the global distribution of malaria. *Global Environmental Change*. 2011; 21(4):1209–14. <http://dx.doi.org/10.1016/j.gloenvcha.2011.06.001>.
128. Gething PW, Smith DL, Patil AP, Tatem AJ, Snow RW, Hay SI. Climate change and the global malaria recession. *Nature*. 2010; 465(7296):342–U94. <https://doi.org/10.1038/nature09098> PMID: [20485434](https://pubmed.ncbi.nlm.nih.gov/20485434/)