



## Methylation of TGM-3 Promoter and Its Association with Oral Squamous Cell Carcinoma (OSCC)

Sorour Shojaeian <sup>1</sup>, Abdolkarim Moazeni-Roodi <sup>2</sup>, Abdolamir Allameh <sup>3</sup>, Ata Garajei <sup>4,5</sup>,  
Anoshirvan Kazemnejad <sup>6</sup>, Kourosh Kabir <sup>7</sup>, and Amir-Hassan Zarnani <sup>8,9\*</sup>

1. Department of Biochemistry, Alborz University of Medical Sciences, Karaj, Iran

2. Department of Clinical Biochemistry, Iranshahr University of Medical Sciences, Iranshahr, Iran

3. Department of Clinical Biochemistry, Faculty of Medical Sciences, Tarbiat Modares University, Tehran, Iran

4. Department of Oral and Maxillofacial Surgery, Faculty of Dentistry, Tehran University of Medical Sciences, Tehran, Iran

5. Department of Head and Neck Surgical Oncology and Reconstructive Surgery, The Cancer Institute, Faculty of Medicine, Tehran University of Medical Sciences, Tehran, Iran

6. Department of Bio-statistics, Faculty of Medical Sciences, Tarbiat Modares University, Tehran, Iran

7. Department of Community Medicine, Alborz University of Medical Sciences, Karaj, Iran

8. Department of Immunology, Faculty of Public Health, Tehran University of Medical Sciences, Tehran, Iran

9. Reproductive Immunology Research Center, Avicenna Research Institute, ACECR, Tehran, Iran

### Abstract

**Background:** Oral Squamous Cell Carcinoma (OSCC) is among the ten most common cancers worldwide. Hypermethylation of CpG sites in the promoter region and subsequent down-regulation of a tumor suppressor gene, TGM-3 has been proposed to be linked to different types of human cancers including OSCC. In this study, methylation status of CpG sites in the promoter region of TGM-3 has been evaluated in a cohort of patients with OSCC compared to normal controls.

**Methods:** Forty fresh tissue samples were obtained from newly diagnosed OSCC patients and normal individuals referred to dentistry clinic for tooth extraction. DNA was extracted, bisulfite conversion was performed and it was subjected to PCR using bisulfite-sequencing PCR (BSP) primers. Prepared samples were sequenced on a DNA analyzer with both forward and reverse primers of the region of interest. The peak height values of cytosine and thymine were calculated and methylation levels for each CpG site within the DNA sequence was quantified.

**Results:** Quantitative DNA methylation analyses in CpG islands revealed that it was significantly higher in OSCC patients compared to controls. DNA methylation at CpG1/CpG3/CpG5 ( $p=0.004-0.01$ ) and CpG1/CpG3 ( $p=0.001-0.019$ ) sites was associated with tumor stage and grade, respectively. Male OSCC patients had higher methylation rate at CpG3 ( $p=0.032$ ), while smoker patients showed higher methylation rate at CpG6 ( $p=0.045$ ).

**Conclusion:** These results manifested the contribution of DNA methylation of TGM-3 in OSCC and its potential association with clinico-pathologic parameters in OSCC.

*Avicenna J Med Biotech 2021; 13(2): 65-73*

**Keywords:** DNA methylation, Genetic, Oral squamous cell carcinoma, Promoter regions

### Introduction

Oral Squamous Cell Carcinoma (OSCC), a subgroup of Head and Neck Squamous Cell Carcinomas (HNSCCs), is among the ten most common types of cancer in the world <sup>1</sup>. Globally, OSCC is a public health problem and is strongly associated with alcohol consumption and smoking habit <sup>2</sup>. OSCC is considered to be one of the most aggressive and metastatic types of HNSCC with a propensity for rapid local invasion and spread <sup>3</sup>. Although the oral cavity is accessible for

clinical examination, OSCC has poor prognosis and is usually diagnosed in advanced stages of the disease <sup>2,4</sup> leading to low survival rate due to treatment resistance and tumor recurrence <sup>4,6</sup>. Furthermore, recent studies have reported an increased incidence of OSCC among the young and middle-aged individuals <sup>7-9</sup>.

Transglutaminases (TGMs) are a widely distributed family of calcium-dependent enzymes catalyzing the post-translational modification of proteins by the iso-

peptide bonds formation<sup>10</sup>. TGM-3, as an epidermal type transglutaminase, is expressed mainly in the suprabasal layers of the stratified squamous epithelium<sup>11</sup>. TGM-3 catalyzes crosslinking of various structural proteins for epidermal terminal differentiation and formation of the cornified cell envelope<sup>12,13</sup>. Some studies have revealed that down-regulation of the *TGM-3* gene is closely related to different types of human cancers, including laryngeal carcinoma<sup>14,15</sup>, esophageal cancer<sup>16,17</sup>, OSCC<sup>18-20</sup>, and cutaneous basal cell carcinoma<sup>21,22</sup>. Mendez *et al* reported that the *TGM-3* gene was differentially expressed in node-negative and node-positive primary OSCC tumors<sup>23</sup>. However, the role of TGM-3 down-expression on OSCC metastasis is still not well elucidated. In addition, a positive correlation between TGM-3 expression and a good response to chemo-radiotherapy and also better overall survival was observed in OSCC patients<sup>24</sup>. However, the effective molecular mechanisms in down-regulation of TGM-3 have not been fully clarified. Gene expression can be regulated *via* epigenetic DNA modification. Negishi *et al* studied *TGM-3* gene hypermethylation of CpG islands (CpGIs) in 12 OSCC cell lines. They showed hypermethylation of *TGM-3* gene promoter was associated with TGM-3 down-regulation. These findings suggest that epigenetic silencing of *TGM-3* plays an essential role in the process of oral carcinogenesis<sup>18</sup>. Wu *et al* studied hypermethylation of *TGM-3* gene in CpGIs in 9 OSCC cell lines and 7 HNSCC tumor tissues compared with the normal epithelial cells and paired adjacent normal tissues. They found hypermethylation of *TGM-3* promoter was one of the mechanisms contributing to the silencing of the *TGM-3* gene in HNSCC<sup>19</sup>.

In this study, an attempt was made to determine the association of *TGM-3* gene methylation in CpGIs, as a mechanism contributing to the gene silencing with OSCC. Direct bisulfite-PCR sequencing was used for quantification of CpG methylation<sup>25</sup>. Moreover, the correlation between the methylation of *TGM-3* gene in CpGIs and gender, smoking habit and clinico-pathological indices was explored in patients with OSCC.

## Materials and Methods

### Patients and specimens

In this study, 40 patients diagnosed with OSCC were enrolled. All patients were candidates of tumor surgery referred to Cancer Institute, Imam Khomeini Hospital, Tehran, Iran during January 2013 to September 2015. All patients were confirmed to have OSCC based on histological examination by pathologists. Patients who had received preoperative immunotherapy, radiation, or chemotherapy were excluded from the study. The control group (n=40) included apparently healthy individuals that referred to dentistry clinic for tooth extraction. Individuals with severe oral infection signs were excluded from the study. Fresh samples were obtained from newly diagnosed patients with

OSCC that underwent initial surgical treatment. Half of each sample was embedded in paraffin for pathologic examination, and the rest was quickly transferred and kept in tubes containing RNA later buffer and then frozen at  $-70^{\circ}\text{C}$  until DNA extraction. Demographic, clinico-pathological and smoking habit data are shown in table 1. In this study, samples from each patient were stained with Hematoxylin and Eosin (H&E), classified histologically, and staged according to the TNM classification system of the International Union Against Cancer (1988) prior to further analysis. Written informed consent for the use of sample tissues was obtained from all patients and healthy cases before the operation. This study was approved by the Medical Ethical Committee of Alborz University of Medical Sciences (bzums.rec.1394.42).

### DNA isolation technique

DNA extraction was performed based on the classic phenol-chloroform extraction method with some modifications<sup>26,27</sup>. Briefly, 20 mg of the tissue sample was homogenized in 400  $\mu\text{l}$  of lysis buffer (10 mM NaCl, 20 mM Tris-HCl, 1 mM EDTA, pH=8), 50  $\mu\text{l}$  of 10% SDS, and 25  $\mu\text{l}$  of proteinase k (10 mg/ml). The mixture was heated at  $55^{\circ}\text{C}$  for 30 min. Next, 400  $\mu\text{l}$  of phenol-chloroform-isoamyl alcohol (25:24:1) was added and incubated for 30 s at room temperature. Then, after centrifugation (7000 rpm for 5 min), 500  $\mu\text{l}$  of the aqueous layer, containing the target DNA, was transferred to a microfuge tube. To precipitate DNA, 50  $\mu\text{l}$  of sodium acetate (3 M, pH=5.2) and 800  $\mu\text{l}$  of ice-cold isopropanol were added to each tube and incubated at  $4^{\circ}\text{C}$  for 1 hr. After centrifugation (12000 rpm, 3 min), the supernatant was removed, and 800  $\mu\text{l}$  of ice-cold 70% ethanol was poured into the tube and centrifuged

Table 1. Demographic/clinico-pathologic characteristics and smoking status among patients and controls

Characteristics	Patients	Controls	p
<b>Total number (n)</b>	40	40	-
<b>Age (Mean<math>\pm</math>SD)</b>	49.9 $\pm$ 15.7	44.1 $\pm$ 12.1	0.121
<b>Gender (male/female)</b>	24/16	22/18	0.821
<b>Tobacco smoking (yes/no)</b>	26/14	19/21	0.176
<b>Tumor grade</b>			
Well differentiated	22 (55%)	N/A	
Moderately differentiated	12 (30%)		-
Poorly differentiated	6 (15%)		
<b>Tumor stage</b>			
I	8 (20%)	N/A	
II	19 (47.5%)		-
III	7 (17.5%)		
IV	6 (15%)		
<b>Tumor site</b>			
Lips	3 (7.5%)	N/A	
Tongue	15 (37.5%)		-
Floor of mouth	4 (10%)		
Buccal mucosa	8 (20%)		
Gingiva	5 (12.5%)		
Hard palate	5 (12.5%)		

at 12000 *rpm* for 4 *min* at 4°C. The procedure was repeated twice. The supernatant was completely discarded and pellet was subsequently dried by air drying until no visible liquid remained. Finally, to dissolve pellet, 100  $\mu$ l of distilled water was added to each tube, followed by incubation at 50°C for 2 *min*.

#### **Determination of quality and quantity of isolated DNA**

DNA quantity (Concentration and extraction efficiency) and quality (Purity and intactness) were analyzed by UV spectroscopy and agarose gel electrophoresis, respectively. For UV spectrophotometric study, the sample's absorbance spectrum, between 200 and 320 *nm*, was measured using a Nanodrop 2000C spectrophotometer (Thermo Scientific, Wilmington, DE, USA), and  $A_{260}/A_{280}$  and  $A_{260}/A_{230}$  ratios were calculated<sup>28</sup>. To determine the quality of extracted DNA, electrophoresis was performed on 1% agarose gel with a 100-2000 *bp* ladder.

#### **Bisulfite conversion**

For methylation analyses, purified genomic DNA was modified by treatment with sodium bisulfite, which converts all unmethylated cytosines to uracil, and then to thymidine during the subsequent PCR<sup>29</sup>; however, the methylated cytosine was left unchanged. Bisulfite conversion was performed using EpiJET™ Bisulfite Conversion Kit (Thermo Fisher Scientific, Waltham, MA) according to the manufacturer's protocols. Briefly, 200-500 *ng* of purified DNA in 20  $\mu$ l of distilled water was incubated with 120  $\mu$ l of bisulfite solution at 98°C for 10 *min* and then 60°C for 150 *min* in a thermal cycler. Following thermal cycling to perform the bisulfite conversion, the sulfonated DNA was immobilized by binding to a mini-column and washed to remove bisulfite solution and other impurities due to bisulfite treatment. Also, EpiJET™ Bisulfite Kit was used for desulfonation with NaOH at alkaline pH to convert cytosine to uracil on-column for 20 *min* at room temperature. The bisulfite converted DNA was purified and eluted for downstream PCR. The samples could be stored at 4°C for 24 *hr* or -20°C for at least one year.

#### **Primer designing for methylation analysis**

To design primers specific for bisulfite sequencing PCR, *TGM-3* gene sequence analysis was performed by CLC Genomics Workbench software version 3.6.5 using the *TGM-3* reference sequence (NM\_005228.3, National Center for Biotechnology Information) to detect the start codon in *TGM-3* gene (AUG). Then, up to 10,000 *bps* upstream of the start codon was selected to search the putative CpGIs in the regulatory region of the *TGM-3* gene using MethPrimer online software (found at <http://www.urogene.org/methprimer/index1.html>) to determine the presence and location of CpGIs within the *TGM-3* promoter. Following bisulfite treatment of DNA, PCR was performed with designed bisulfite-compatible primers which targeted the identified CpGI in *TGM-3* promoter. The primer sequences

were as follows: Forward primer: 5'-GTTTAGGTTGG AGTGTAGTGATG-3', and Reverse primer: 5'-TCA CTTAAAACCAAAAATTCAAAC-3'.

#### **Bisulfite sequencing PCR**

To quantify the percentage of methylated cytosine in individual CpG sites, BSP amplification of the *TGM-3* promoter was done by PCR reaction with Hot Star Taq Master Mix (Ampliqon, Herlev, Denmark). The PCR reaction mixture contained 2  $\mu$ l of bisulfite-treated DNA sample, 10  $\mu$ l of Hot Start 2 $\times$  master mix RED (Ampliqon, Herlev, Denmark), and 500 *nmol* of each primer in a final volume of 20  $\mu$ l. The PCR protocol involved preheating at 95°C for 15 *min*, followed by 30 cycles of amplification in a thermal cycler (MyCycler, Biorad, USA). Each cycle of PCR included a template denaturation step at 95°C for 30 *s*, primer annealing step at 62°C for 40 *s*, and chain elongation step at 72°C for 30 *s*, followed by a final elongation step at 72°C for 10 *min*.

#### **Verification and purification of PCR product**

The size of the amplicon resulting from PCR amplification was verified prior to ensuring the correct size by electrophoresis on a 2% agarose gel and DNA fragments were visualized by gel red (Biotium, UK). PCR products were then purified to remove any unwanted salts as well as remaining primers and free nucleotides from the PCR products that might interfere with the outcome of sequencing results based on binding to the silica SV membrane using Expin™ PCR SV Kit (GeneAll, Korea) in accordance with the manufacturer's protocol. Briefly, 5 volumes of binding buffer (PB buffer), containing chaotropes, was added to the PCR product and mixed well. The sample mixture was transferred to the SV column and centrifuged (12,000 *rpm* for 30 *s*); then, 700  $\mu$ l of washing buffer (NW buffer), containing ethanol, was added to the SV column and centrifuged again (12,000 *rpm* for 30 *s*). To complete removal of ethanol, the SV column was centrifuged for an additional 1 *min* and 50  $\mu$ l of elution buffer (EB buffer, 10 *mM* Tris-HCl, pH=8.5) was added to the membrane center of the SV column and remained for 1 *min* at room temperature and then, centrifuged at 12,000 *rpm* for 1 *min* to elute the DNA. The eluted DNA was stored at -20°C until delivery for sequencing.

#### **Direct PCR sequencing and data interpretation**

Prepared samples were sequenced in triplicate by Applied Biosystems 3500 DNA Analyzer. Samples were sequenced with the forward and reverse primers of the region of interest. Sequenced samples from the ABI 3500 DNA Analyzer were returned as AB1 files. The sequencing results were compared with the respective reference genomic DNA sequences of *TGM-3* gene to determine the CpG site using CLC genomic workbench software and then were analyzed using Chromas software (For PC, available at <http://www.technelysium.com.au/chromas.html>). Methylation lev-

els for each CpG site within the DNA amplicon were quantified by measuring the ratio between peak height values of Cytosine (C) and Thymine (T), through the basic equation for the methylation percentage  $(C/(C+T)*100)$ . In our experience, sequencing with the forward primer resulted in a cleaner chromatogram and more consistent analysis of DNA methylation.

**Statistical analysis**

Data analyses were performed using SPSS software version 16. T test and Chi square were used to compare demographic characteristics between patients and controls. T test was also used to compare mean of methylation level between patients and controls. p-values less than 0.05 were considered statistically significant.

**Results**

**Patient clinico-pathological data**

A total of 40 OSCC cases and 40 control subjects were included in the study. The histology of OSCC was confirmed by pathological examinations. Tumor site was different in the oral cavity of the patients with tongue carcinoma as predominant oral cancer which comprised 37.5% of the cases. Among these (cases and controls), 42.5% were women and 57.5% were men. The patient group consisted of 40% of women and 60% of men, 65% of whom were smokers. The control group consisted of 45% of women and 55% of men, 47.5% of whom were smokers (Table 1). Tumor grade in majority of patients was well differentiated. Tongue and lips were found to be the most and less prevalent sites for tumor development, respectively.

**Evaluation of the quality and quantity of extracted DNA**

The yield of purified DNA was within the range of 100-400 ng/μl. Contamination of extracted DNA with proteins and/or residual impurities such as phenol or ethanol usually resulted in reduced ratios of A260/280 and A260/230, respectively. The ratios of A260/280 and A260/230 were 1.7-1.9 and 2-2.1, respectively. According to the expected range of relevant OD ratios, the extracted DNA was of satisfactory purity<sup>29,30</sup>. The data described above provide information about the approximate yield and purity of the isolated DNA, but not about the potential fragmentation occurring during the DNA extraction. The integrity of all genomic DNA extracted from samples was investigated by electrophoresis on 1% agarose gel<sup>29</sup>. The presence of bands with high intensity and molecular weight indicated high integrity and non-degradation during the extraction process in the tissue samples (Figure 1A).

**Identification of CpG islands in TGM-3 promoter**

A CpGI located at -6778 to -6578 bp (Including 9 CpG sites) relative to the transcriptional start site of TGM-3 promoter was identified. Of the nine detected CpG sites, methylation status of the six CpG sites was assessed using designed Bisulfite Sequencing PCR (BSP) primers (Table 2).

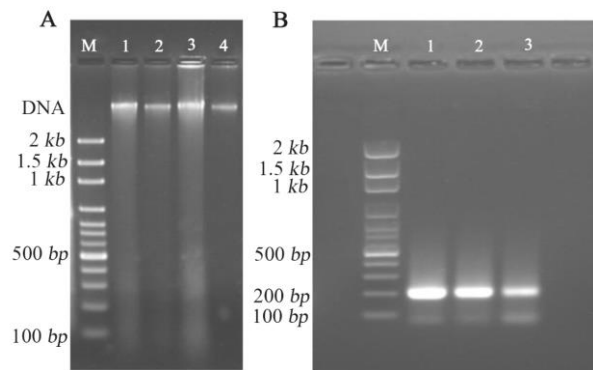


Figure 1. Examining the quality of DNA and bisulfite-treated DNA amplicons. Quality of DNA was evaluated for extracted DNA (A) and bisulfite-treated DNA amplicons (B) using agarose gel (1% and 2%, respectively) electrophoresis and staining with gel red dye. (A): A single, high molecular weight DNA band was detected with no evidence of shearing and RNA contamination (Lanes 1–4). M: 100 bp DNA ladder marker. (B): The DNA amplicons were detected as a single DNA band related to TGM-3 gene amplification, comparable to 200 bp band (Lanes 1–3). M: 100 bp DNA ladder marker.

Table 2. Genomic position of assessed CpG sites of regulatory region of TGM-3 gene

CpG number	CpG1	CpG2	CpG3	CpG4	CpG5	CpG6
CpG location	-6604	-6618	-6629	-6657	-6669	-6693

**Verification and purification of bisulfite-treated DNA**

The size of the amplicon resulting from PCR amplification was verified prior to ensuring the correct size by electrophoresis. One strong band with the anticipated product size (201 bps) was presented. Samples containing several bands or primer dimers were excluded and re-processed (Figure 1B).

**Comparison of methylation of TGM-3 promoter at CpG sites in OSCC patients and controls**

Methylation status of TGM-3 promoter at CpGs 1-6 was evaluated using designed BSP primers. It was found that among six CpG sites of TGM-3, all CpGs except CpG3 exhibited significantly greater methylation levels in tumor tissue compared to normal tissue while methylation levels across CpG3 did not show a significant difference between tumor tissue and normal tissue. In this respect, the higher and lower levels of difference in methylation were identified at CpG4 (1.99%, p<0.001) and CpG6 (1.17%, p=0.004), respectively (Table 3, Figure 2). Furthermore, the methylation status in relation to the gender was evaluated. These results indicated gender-dependent hypermethylation at CpG3 (1.22%, p= 0.032) of TGM-3 promoter in OSCC patients (Figure 3).

Cytosine methylation analysis was performed between smoking and non-smoking groups. Based on our results, smoking habit had a positive association with TGM-3 hypermethylation of CpG6 in patients. Indeed, CpG6 exhibited significantly higher methylation level



Table 3. Comparison of methylation of CpG sites in *TGM-3* promoter between OSCC and control groups

CpG sites	Patients Mean±SD	Controls Mean±SD	p-value
CpG1	33.43±1.73	22.18±2.49	<0.001
CpG2	53.04±2.05	40.38±1.63	<0.001
CpG3	45.06±2.01	47.00±1.66	0.459
CpG4	24.52±1.80	12.35±1.67	<0.001
CpG5	46.91±3.18	31.13±3.20	0.001
CpG6	62.03±2.75	53.31±1.15	0.004

\* p-value less than 0.05 was considered statistically significant.

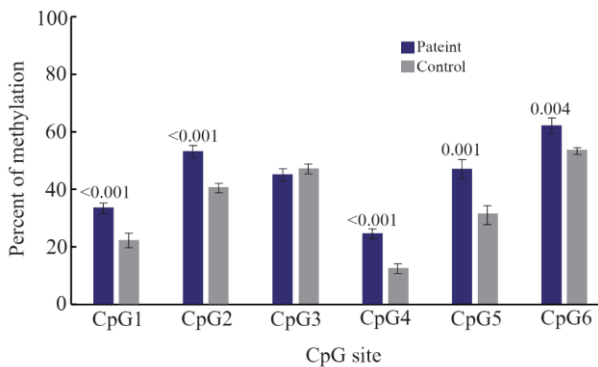


Figure 2. Comparison of methylation of CpG sites in *TGM-3* promoter between OSCC and control groups. Methylation of cytosine at CpG1 to CpG6 sites was assessed using BSP amplification. The results revealed significant higher methylation at five CpG sites in OSCC patients compared to control group.  $p < 0.05$  was considered statistically significant.

(2%,  $p = 0.045$ ) in tumors of smokers compared to non-smokers (Figure 4).

#### Comparison of *TGM-3* promoter methylation and pathological grade/stage

The association of *TGM-3* methylation in relation to clinico-pathological parameters was assessed. It was found that increased *TGM-3* methylation level correlated with the pathological differentiation and stage of the tumors. The rate of *TGM-3* promoter methylation in CpG1 (1.27%,  $p = 0.019$ ) and CpG3 (1.32%,  $p = 0.001$ ) was significantly higher in Moderately/Poorly Differentiated (MD/PD) compared to Well Differentiated (WD) tumors. Furthermore, correlation between hypermethylation and tumor stage was confirmed to be significant at CpG1 (1.3%,  $p = 0.02$ ), CpG3 (1.3%,  $p = 0.004$ ) and CpG5 (1.34%,  $p = 0.01$ ) at stage III/IV compared to stage I/II (Tables 4 and 5, Figure 5).

#### Discussion

*TGM-3* down-regulation was closely related to a variety of human cancers including Head and Neck Cancers (HNCs) <sup>19,30</sup> such as OSCC <sup>20</sup> and laryngeal carcinoma <sup>15</sup>, Esophageal Squamous Cell Carcinoma (ESCC) <sup>16,17</sup>, Colorectal Cancer (CRC) <sup>31</sup>, and skin cancer <sup>21,22</sup>. Although *TGM-3* down-regulation has been found

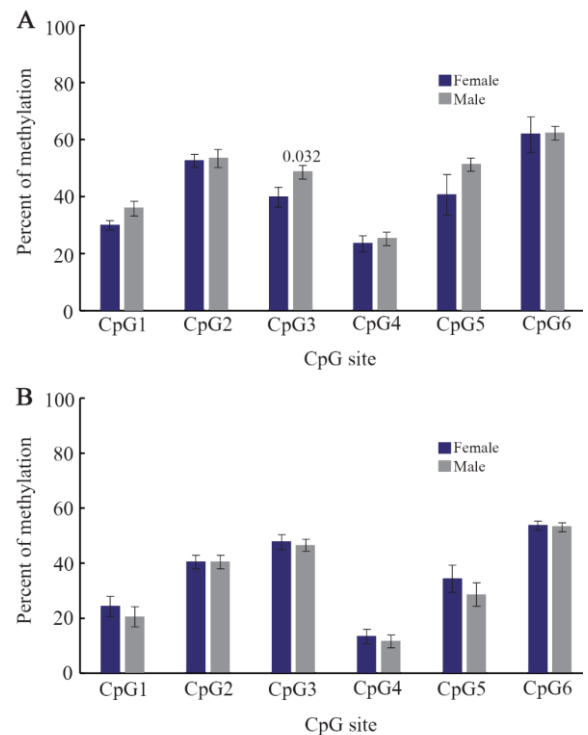


Figure 3. Comparison of gender-dependent *TGM-3* promoter methylation in patients and control groups. The assessment of relation between methylation status and gender in patients (A) and controls (B) revealed that there was only a significant difference in methylation level of CpG3 site in patients.  $p < 0.05$  was considered statistically significant.

in many cancers, the molecular mechanism that causes the silencing of *TGM-3* expression in most cancers remains unclear. One of the most important epigenetic modifications which usually results in transcriptional inactivation of the genes is gene promoter hypermethylation. In this study, DNA methylation of *TGM-3* promoter gene was evaluated in OSCC patients by direct bisulfite sequencing. To the best of our knowledge, this is the first study investigating the association between DNA methylation in the promoter of the *TGM-3* gene and OSCC.

To evaluate the DNA methylation of *TGM-3* gene in patients with OSCC, purified genomic DNA from 40 oral cavity tissues and 40 normal tissues were modified by sodium bisulfite treatment. Then, methylation of six CpG sites in a CpG-rich region from -6778 to -6578 upstream of the transcription start site of *TGM-3* gene was analyzed by direct bisulfite sequencing. Our results showed significantly higher ratios of methylation levels for *TGM-3* promoter at five CpG sites (1-2 and 4-6) in OSCC samples compared with control, while methylation level across CpG3 site was not significantly different between patients and controls. *TGM-3* gene methylation status was first evaluated by Negishi *et al* in 12 OSCC cell lines by cloning and sequencing <sup>18</sup>. They showed that of 22 CpG sites in a CpG-rich region, methylation of 8 CpG sites was correlated with

## DNA Methylation of TGM-3 Promoter in OSCC

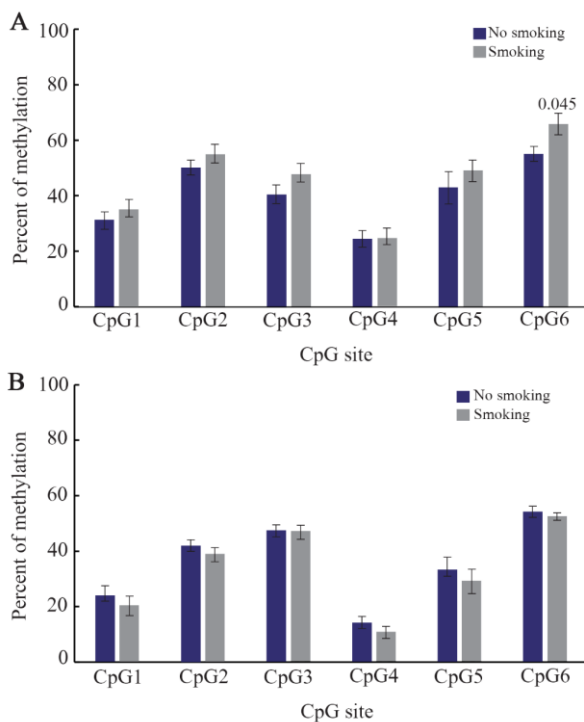


Figure 4. Comparison of the effect of smoking habit on *TGM-3* promoter methylation in patient and control groups. Analysis of BSP amplification of the *TGM-3* promoter methylation in patient (A) and control (B) groups showed that there was a significant difference related to smoking habit and methylation level of CpG6 site in patients.  $p < 0.05$  was considered statistically significant.

Table 4. Comparison of grade-dependent *TGM-3* promoter methylation in patients

CpG sites	WD Mean±SD	MD/PD Mean±SD	p-value
CpG1	29.82±2.23	37.84±2.36	0.019
CpG2	52.32±3.36	53.91±2.09	0.705
CpG3	39.38±2.36	51.99±2.66	0.001
CpG4	22.14±2.47	27.43±2.51	0.144
CpG5	42.59±4.7	52.18±3.91	0.136
CpG6	59.43±4.4	65.20±2.87	0.302

p-value less than 0.05 was considered statistically significant. WD: Well Differentiated, MD: Moderately Differentiated, PD: Poorly Differentiated.

*TGM-3* silencing. In another study, Wu *et al* evaluated *TGM-3* gene hypermethylation in 9 HNSCC cell lines and 7 HNSCC tissue samples by cloning and sequencing. The results showed that methylation of *TGM-3* promoter in the CpG-rich region was correlated with *TGM-3* silencing in the HNSCC cell lines. Moreover, the methylation levels of the CpG islands were significantly higher in HNSCC samples than in the paired adjacent normal tissues<sup>19</sup>. Our finding reflected a correlation between methylation status of *TGM-3* promoter and OSCC. It is possible that the CpG-rich region of *TGM-3* promoter functions as a distal enhancer for *TGM-3* transcription. It is important to note that even

Table 5. Comparison of stage-dependent *TGM-3* promoter methylation in patients

CpG sites	Stage I/II Mean±SD	Stage III/IV Mean±SD	p-value
CpG1	30.49±1.86	39.53±3.08	0.02
CpG2	51.84±2.81	55.53±2.45	0.408
CpG3	41.13±2.31	53.20±2.84	0.004
CpG4	23.55±1.93	26.52±3.86	0.447
CpG5	42.26±4.22	56.53±3.12	0.01
CpG6	59.52±3.69	67.08±3.32	0.206

p-value less than 0.05 was considered statistically significant.

single CpG methylation changes are sufficient to epigenetically alter the expression of a gene<sup>32-35</sup>.

Next, the association between *TGM-3* promoter methylation and pathological parameters was compared in OSCC patients. Our finding revealed a significant association between hypermethylation of *TGM-3* promoter with poorer pathological tumor differentiation and tumor stage. Previous findings demonstrated that DNA methylation biomarkers would improve diagnosis and prognostic accuracy beyond standard staging and grading in ovarian and lung cancers<sup>36-38</sup>. Uemura *et al* established *TGM-3* as a novel prognostic biomarker in esophageal cancer for the first time. They demonstrated that the prognostic value of *TGM-3* expression was higher than those of the lymph node me-

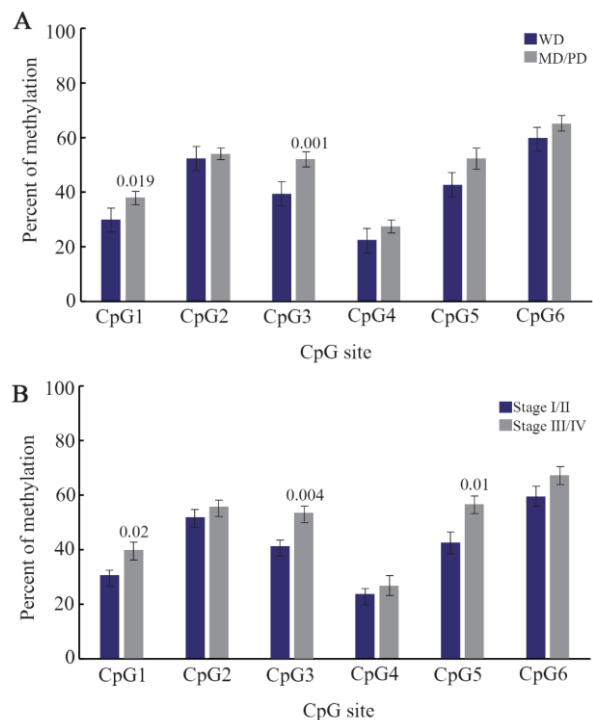


Figure 5. Comparison of grade- and stage-dependent *TGM-3* promoter methylation in patients. Analysis of BSP amplification of the *TGM-3* promoter showed that there was a statistically significant difference in (A) methylation level of CpG1 and CpG3 in moderately/poorly differentiated (MD/PD) and well differentiated (WD) tumor grades and (B) methylation level of CpG1, CpG3 and CpG5 in tumor stage III/IV and stage I/II patients.  $p < 0.05$  was considered statistically significant.

tastasis, vascular invasion status, and intramural metastasis. Accordingly, examination of TGM-3 expression may provide novel therapeutic strategies to prevent the recurrence of ESCC<sup>16</sup>. Also, Wu *et al* revealed that there was a positive association between TGM-3 expression and pathological differentiation of HNSCC whereas no significant association was determined between TGM-3 expression pattern and tumor stage<sup>19</sup>.

The correlation between methylation status of *TGM-3* promoter with gender and smoking habit was examined in this study as well. Our results showed a significant relation between methylation level of *TGM-3* promoter with gender and smoking habit. For gender-related DNA methylation, several reports demonstrated the correlation between gender and gene methylation in such cancers as gastric<sup>39</sup>, colorectal<sup>40</sup>, and lung cancers<sup>41-44</sup>. This could be influenced by sex hormones or physiological differences between the target organs. Also, some studies have reported an association between DNA methylation and smoking in lung<sup>41,42</sup>, bladder<sup>45</sup>, and prostate<sup>46</sup> cancers. The specific mechanisms of how smoking may alter DNA methylation are higher level of DNA methyltransferases (DNMT) expression in smokers and HIF-1 $\alpha$ -dependent up-regulation of methionine adenosyltransferase induced by hypoxia. The latter enzyme synthesizes S-adenosyl methionine, a major biological methyl donor critical for DNA methylation processes<sup>47,48</sup>. However, a study performed by Wu *et al* showed that there were no significant differences between TGM-3 mRNA expression pattern and gender or smoking in HNSCC<sup>19</sup>.

It should be noted that methylation status is not always associated with a low level of gene expression in the tumors. Also, it is likely that other molecular mechanisms, in addition to promoter methylation, influence gene expression<sup>49,50</sup>. Therefore, it is better to combine DNA methylation and gene expression data to characterize changes that occur in tumors.

### Conclusion

In conclusion, our results proved an association between *TGM-3* hypermethylation and OSCC and this event is associated with less cancer cell differentiation and higher stages. DNA methylation pattern could be regarded as a complementary approach for diagnosis and characterization of tumors. Some biological factors such as gender and individual habits like smoking could result in alteration in DNA methylation patterns.

### Acknowledgement

The authors are very thankful to Alborz University of Medical Sciences as the funder of the project and Tarbiat Modares University as the provider of laboratory facilities.

### Conflict of Interest

The authors declare that they have no conflict of interest.

### References

1. Scully C. Oral and maxillofacial medicine: the basis of diagnosis and treatment. Edinburgh: Churchill Livingstone/Elsevier; 2013. 448 p.
2. Rivera C. Essentials of oral cancer. Int J Clin Exp Pathol 2015;8(9):11884-94.
3. Franceschi D, Gupta R, Spiro RH, Shah JP. Improved survival in the treatment of squamous carcinoma of the oral tongue. Am J Surg 1993;166(4):360-5.
4. Cheng YS, Rees T, Wright J. A review of research on salivary biomarkers for oral cancer detection. Clin Transl Med 2014;3(1):3.
5. Sano D, Myers JN. Metastasis of squamous cell carcinoma of the oral tongue. Cancer Metastasis Rev 2007;26(3-4):645-62.
6. Forastiere A, Koch W, Trotti A, Sidransky D. Head and neck cancer. N Engl J Med 2001;345(26):1890-900.
7. Mackenzie J, Ah-See K, Thakker N, Sloan P, Maran AG, Birch J, et al. Increasing incidence of oral cancer amongst young persons: what is the aetiology? Oral Oncol 2000;36(4):387-9.
8. Annertz K, Anderson H, Björklund A, Moller T, Kantola S, Mork J, et al. Incidence and survival of squamous cell carcinoma of the tongue in Scandinavia, with special reference to young adults. Int J Cancer 2002;101(1):95-9.
9. Schantz SP, Yu GP. Head and neck cancer incidence trends in young Americans, 1973-1997, with a special analysis for tongue cancer. Arch Otolaryngol Head Neck Surg 2002;128(3):268-74.
10. Griffin M, Casadio R, Bergamini CM. Transglutaminases: nature's biological glues. Biochem J 2002;368(Pt 2):377-96.
11. Candi E, Schmidt R, Melino G. The cornified envelope: a model of cell death in the skin. Nat Rev Mol Cell Biol 2005;6(4):328-40.
12. Kalinin AE, Kajava AV, Steinert PM. Epithelial barrier function: assembly and structural features of the cornified cell envelope. Bioessays 2002;24(9):789-800.
13. Eckert RL, Sturniolo MT, Broome AM, Ruse M, Rorke EA. Transglutaminase function in epidermis. J Invest Dermatol 2005;124(3):481-92.
14. He G, Zhao Z, Fu W, Sun X, Xu Z, Sun K. [Study on the loss of heterozygosity and expression of transglutaminase 3 gene in laryngeal carcinoma]. Zhonghua Yi Xue Yi Chuan Xue Za Zhi 2002;19(2):120-3. Chinese.
15. Liu J, Zhou Y, Wan J, Liu Z. [Expression of TGM3 protein and its significance in laryngeal carcinoma]. Lin Chung Er Bi Yan Hou Tou Jing Wai Ke Za Zhi 2012;26(3):101-3. Chinese.
16. Uemura N, Nakanishi Y, Kato H, Saito S, Nagino M, Hirohashi S, et al. Transglutaminase 3 as a prognostic biomarker in esophageal cancer revealed by proteomics. Int J Cancer 2009;124(9):2106-15.
17. Liu W, Yu ZC, Cao WF, Ding F, Liu ZH. Functional studies of a novel oncogene TGM3 in human esophageal squamous cell carcinoma. World J Gastroenterol 2006;12(24):3929-32.

18. Negishi A, Masuda M, Ono M, Honda K, Shitashige M, Satow R, et al. Quantitative proteomics using formalin-fixed paraffin-embedded tissues of oral squamous cell carcinoma. *Cancer Sci* 2009;100(9):1605-11.
19. Wu X, Cao W, Wang X, Zhang J, Lv Z, Qin X, et al. TGM3, a candidate tumor suppressor gene, contributes to human head and neck cancer. *Mol Cancer* 2013;12(1):151.
20. Choi P, Jordan CD, Mendez E, Houck J, Yueh B, Farwell DG, et al. Examination of oral cancer biomarkers by tissue microarray analysis. *Arch Otolaryngol Head Neck Surg* 2008;134(5):539-46.
21. Stacey SN, Sulem P, Gudbjartsson DF, Jonasdottir A, Thorleifsson G, Gudjonsson SA, et al. Germline sequence variants in TGM3 and RGS22 confer risk of basal cell carcinoma. *Hum Mol Genet* 2014;23(11):3045-53.
22. Smirnov A, Anemona L, Montanaro M, Mauriello A, Annicchiarico-Petruzzelli M, Campione E, et al. Transglutaminase 3 is expressed in basal cell carcinoma of the skin. *Eur J Dermatol* 2019;29(5):477-83.
23. Mendez E, Fan W, Choi P, Agoff SN, Whipple M, Farwell DG, et al. Tumor-specific genetic expression profile of metastatic oral squamous cell carcinoma. *Head Neck* 2007;29(9):803-14.
24. Nayak S, Bhatt MLB, Goel MM, Gupta S, Mahdi AA, Mishra A, et al. Tissue and serum expression of TGM-3 may be prognostic marker in patients of oral squamous cell carcinoma undergoing chemo-radiotherapy. *PLoS One* 2018;13(6):e0199665.
25. Parrish RR, Day JJ, Lubin FD. Direct bisulfite sequencing for examination of DNA methylation with gene and nucleotide resolution from brain tissues. *Curr Protoc Neurosci* 2012;Chapter 7:Unit 7.24.
26. Fathi Z, Mousavi SAJ, Roudi R, Ghazi F. Distribution of KRAS, DDR2, and TP53 gene mutations in lung cancer: An analysis of Iranian patients. *PLoS One* 2018;13(7):e0200633.
27. Javadi A, Shamaei M, Mohammadi Ziazi L, Pourabdollah M, Dorudinia A, Seyedmehdi SM, et al. Qualification study of two genomic DNA extraction methods in different clinical samples. *Tanaffos* 2014;13(4):41-7.
28. Wilfinger WW, Mackey K, Chomczynski P. In: *DNA sequencing II optimizing preparation and cleanup*. Sudbury KJ, editor. MA: Jones and Bartlett Publishers; 2006. Assessing the quantity, purity and integrity of RNA and DNA following nucleic acid purification; pp. 291-312.
29. Heroiu Cataloiu AD, Danciu CE, Popescu CR. Multiple cancers of the head and neck. *Maedica (Buchar)* 2013;8(1):80-5.
30. Nair J, Jain P, Chandola U, Palve V, Vardhan NR, Reddy RB, et al. Gene and miRNA expression changes in squamous cell carcinoma of larynx and hypopharynx. *Genes Cancer* 2015;6(7-8):328-40.
31. Feng Y, Ji D, Huang Y, Ji B, Zhang Y, Li J, et al. TGM3 functions as a tumor suppressor by repressing epithelial to mesenchymal transition and the PI3K/AKT signaling pathway in colorectal cancer. *Oncol Rep* 2020;43(3):864-76.
32. Choi JH, Park SH, Park J, Park BG, Cha SJ, Kong KH, et al. Site-specific methylation of CpG nucleotides in the hTERT promoter region can control the expression of hTERT during malignant progression of colorectal carcinoma. *Biochem Biophys Res Commun* 2007;361(3):615-20.
33. Hattermann K, Mehdorn HM, Mentlein R, Schultka S, Held-Feindt J. A methylation-specific and SYBR-green-based quantitative polymerase chain reaction technique for O6-methylguanine DNA methyltransferase promoter methylation analysis. *Anal Biochem* 2008;377(1):62-71.
34. Suzuki M, Yamada T, Kihara-Negishi F, Sakurai T, Hara E, Tenen DG, et al. Site-specific DNA methylation by a complex of PU.1 and Dnmt3a/b. *Oncogene* 2006;25(17):2477-88.
35. Shimozaki K, Namihira M, Nakashima K, Taga T. Stage- and site-specific DNA demethylation during neural cell development from embryonic stem cells. *J Neurochem* 2005;93(2):432-9.
36. Sandoval J, Mendez-Gonzalez J, Nadal E, Chen G, Carmona FJ, Sayols S, et al. A prognostic DNA methylation signature for stage I non-small-cell lung cancer. *J Clin Oncol* 2013;31(32):4140-7.
37. Watts GS, Futscher BW, Holtan N, Degeest K, Domann FE, Rose SL. DNA methylation changes in ovarian cancer are cumulative with disease progression and identify tumor stage. *BMC Med Genomics* 2008;1:47.
38. Keita M, Wang ZQ, Pelletier JF, Bachvarova M, Plante M, Gregoire J, et al. Global methylation profiling in serous ovarian cancer is indicative for distinct aberrant DNA methylation signatures associated with tumor aggressiveness and disease progression. *Gynecol Oncol* 2013;128(2):356-63.
39. Leal M, Lima E, Silva P, Assumpcao P, Calcagno D, Payao S, et al. Promoter hypermethylation of CDH1, FHIT, MTAP and PLAGL1 in gastric adenocarcinoma in individuals from Northern Brazil. *World J Gastroenterol* 2007;13(18):2568-74.
40. Lind GE, Thorstensen L, Lovig T, Meling GI, Hamelin R, Rognum TO, et al. A CpG island hypermethylation profile of primary colorectal carcinomas and colon cancer cell lines. *Mol Cancer* 2004;3:28.
41. Vaissiere T, Hung RJ, Zaridze D, Moukeria A, Cuenin C, Fasolo V, et al. Quantitative analysis of DNA methylation profiles in lung cancer identifies aberrant DNA methylation of specific genes and its association with gender and cancer risk factors. *Cancer Res* 2009;69(1):243-52.
42. Kikuchi S, Yamada D, Fukami T, Maruyama T, Ito A, Asamura H, et al. Hypermethylation of the TSLC1/IGSF4 promoter is associated with tobacco smoking and a poor prognosis in primary nonsmall cell lung carcinoma. *Cancer* 2006;106(8):1751-8.
43. Lai JC, Cheng YW, Chiou HL, Wu MF, Chen CY, Lee H. Gender difference in estrogen receptor alpha promoter hypermethylation and its prognostic value in non-small cell lung cancer. *Int J Cancer* 2005;117(6):974-80.
44. Dang J, Bian YQ, Sun JY, Chen F, Dong GY, Liu Q, et al. MicroRNA-137 promoter methylation in oral lichen



- planus and oral squamous cell carcinoma. *J Oral Pathol Med* 2013;42(4):315-21.
45. Marsit CJ, Karagas MR, Danaee H, Liu M, Andrew A, Schned A, et al. Carcinogen exposure and gene promoter hypermethylation in bladder cancer. *Carcinogenesis* 2006;27(1):112-6.
  46. Enokida H, Shiina H, Urakami S, Terashima M, Ogi-shima T, Li LC, et al. Smoking influences aberrant CpG hypermethylation of multiple genes in human prostate carcinoma. *Cancer* 2006;106(1):79-86.
  47. Lee KW, Pausova Z. Cigarette smoking and DNA methylation. *Front Genet* 2013;4:132.
  48. Zong D, Liu X, Li J, Ouyang R, Chen P. The role of cigarette smoke-induced epigenetic alterations in inflammation. *Epigenetics Chromatin* 2019;12(1):65.
  49. An J, Wei Q, Liu Z, Lu KH, Cheng X, Mills GB, et al. Messenger RNA expression and methylation of candidate tumor-suppressor genes and risk of ovarian cancer-a case-control analysis. *Int J Mol Epidemiol Genet* 2010; 1(1):1-10.
  50. Uno M, Oba-Shinjo SM, Camargo AA, Moura RP, Aguiar PH, Cabrera HN, et al. Correlation of MGMT promoter methylation status with gene and protein expression levels in glioblastoma. *Clinics (Sao Paulo)* 2011;66(10):1747-55.