



Beta-Lactams Therapeutic Monitoring in Septic Children—What Target Are We Aiming for? A Scoping Review

Ronaldo Morales Junior^{1,2*}, Gabriela Otofuij Pereira¹, Gustavo Magno Baldin Tiguman³, Vanessa D’Amaro Juodinis², João Paulo Telles⁴, Daniela Carla de Souza^{2,5} and Silvia Regina Cavani Jorge Santos¹

¹ Clinical Pharmacokinetics Center, School of Pharmaceutical Sciences, University of São Paulo, São Paulo, Brazil, ² Pediatric Intensive Care Unit, Department of Pediatrics, Hospital Sírio-Libanês, São Paulo, Brazil, ³ Faculty of Pharmaceutical Sciences, State University of Campinas, São Paulo, Brazil, ⁴ Department of Infectious Diseases, AC Camargo Cancer Center, São Paulo, Brazil, ⁵ Pediatric Intensive Care Unit, University Hospital, University of São Paulo, São Paulo, Brazil

OPEN ACCESS

Edited by:

Luregn J. Schlapbach,
University Children’s Hospital
Zurich, Switzerland

Reviewed by:

Julia Anna Bielicki,
University Children’s Hospital
Basel, Switzerland
Enno Wildschut,
Sophia Children’s
Hospital, Netherlands

*Correspondence:

Ronaldo Morales Junior
morales.ronaldo@gmail.com

Specialty section:

This article was submitted to
Pediatric Critical Care,
a section of the journal
Frontiers in Pediatrics

Received: 15 September 2021

Accepted: 31 January 2022

Published: 10 March 2022

Citation:

Morales Junior R, Pereira GO,
Tiguman GMB, Juodinis VD, Telles JP,
de Souza DC and Santos SRCJ
(2022) Beta-Lactams Therapeutic
Monitoring in Septic Children—What
Target Are We Aiming for? A Scoping
Review. *Front. Pediatr.* 10:777854.
doi: 10.3389/fped.2022.777854

The antimicrobial therapy of sepsis and septic shock should be individualized based on pharmacokinetic/pharmacodynamic (PK/PD) parameters to deliver effective and timely treatment of life-threatening infections. We conducted a literature scoping review to identify therapeutic targets of beta-lactam antibiotics in septic pediatric patients and the strategies that have been applied to overcome sepsis-related altered pharmacokinetics and increase target attainment against susceptible pathogens. A systematic search was conducted in the MEDLINE, EMBASE and Web of Science databases to select studies conducted since 2010 with therapeutic monitoring data of beta-lactams in septic children. Last searches were performed on 02 September 2021. Two independent authors selected the studies and extracted the data. A narrative and qualitative approach was used to summarize the findings. Out of the 118 identified articles, 21 met the eligibility criteria. Population pharmacokinetic modeling was performed in 12 studies, while nine studies reported data from bedside monitoring of beta-lactams. Most studies were conducted in the United States of America ($n = 9$) and France ($n = 5$) and reported PK/PD data of amoxicillin, ampicillin, azlocillin, aztreonam, cefazolin, cefepime, cefotaxime, ceftaroline, ceftazidime, doripenem, meropenem and piperacillin/tazobactam. Therapeutic targets ranged from to 40% $fT > MIC$ to 100% $fT > 6 \times MIC$. Prolonging the infusion time and frequency were most described strategies to increase target attainment. Monitoring beta-lactam serum concentrations in clinical practice may potentially maximize therapeutic target attainment. Further studies are required to define the therapeutic target associated with the best clinical outcomes.

Keywords: therapeutic drug monitoring, beta-lactams, pharmacokinetics, pharmacodynamics, pediatrics, sepsis

INTRODUCTION

Approximately 30% of the children admitted to the pediatric intensive care unit (PICU) are affected by pediatric sepsis and septic shock, which are associated with high mortality and morbidity rates (1, 2). These diagnoses require early and appropriate antibiotic therapy in order to achieve the best outcome (3).

Beta-lactams are the most frequently prescribed antibiotics for critically ill septic patients. From a pharmacokinetic and pharmacodynamic (PK/PD) perspective, beta-lactams exhibit time-dependent antibiotic activity, that is, the time that free serum concentrations remain above the minimum inhibitory concentration (MIC) as a function of the dosing interval ($\% fT > MIC$) is a surrogate marker of effectiveness (4). Nonetheless, an international multicenter survey demonstrated that there is an important heterogeneity of targets routinely used in patients > 18 years admitted into ICUs (5).

Pediatric patients often represent a challenge to obtain adequate serum concentrations of antibiotics due to the high variability in body composition, renal and hepatic clearance, or even in the maturation of biotransformation enzymes, resulting in distinct patterns of drug absorption, distribution, and elimination (6, 7). In addition, hydrophilic antibiotic as beta-lactams are largely influenced by the systemic inflammatory response syndrome (SIRS), use of vasopressors, fluid therapy, sepsis-induced organ dysfunctions and by other pathophysiologic factors of critical illness (8, 9).

Availability of information on bacterial susceptibility is also problematic. When the MIC of the isolated strain is not available, it is common to consider the epidemiological cut-off (ECOFF) or the susceptibility breakpoint of the presumed/identified pathogen (10). However, it is possible that patients have infections caused by pathogens with lower MICs than these thresholds.

While the PK/PD target is not consensually defined for beta-lactams, we conducted a literature scoping review to identify which therapeutic targets have been used in the last 10 years in septic pediatric patients. The secondary objectives were to describe the strategies that have been applied to increase the percentage of target attainment (PTA) of empiric therapy against susceptible pathogens.

METHODS

Protocol and Registration

The protocol for this scoping review was registered in the Open Science Framework (OSF) platform: doi: 10.17605/OSF.IO/9K3D8.

Eligibility Criteria

Primary studies of septic pediatric patients, from birth to 18 years of age, that involve beta-lactam therapy with measured serum concentrations (including PK and PK/PD data) were eligible for inclusion. Sepsis is described as presumed or proven infection with life-threatening organ dysfunction (11). However, since the most adequate criteria to define organ dysfunction in children have not yet been defined (3), we chose not to require a specific definition for the purpose of this review, including all studies describing the population as septic. We excluded studies that involved animals, drug classes other than beta-lactams and populations other than pediatric. In the case of studies with a mixed population (adult and pediatric), we considered only the data referring to pediatric patients. Conference abstracts, review

articles and letters to the editor were considered ineligible, but their references were evaluated for additional relevant studies.

Information Sources and Searches

The searches were conducted in the MEDLINE (via PubMed), EMBASE and Web of Science databases (Table 1). Searches were limited to studies available in English, Portuguese and Spanish published since 2010 to map the most updated evidence. Whenever possible, MeSH and Emtree terms and keywords were used to increase the chances of capturing more studies. Additionally, reference lists from retrieved articles and reviews were examined for additional relevant studies not retrieved from our search. The search strategies for each database are presented in Table 1. Last searches were performed on 02 September 2021.

Selection of Sources of Evidence

Two reviewers independently screened titles and abstracts for inclusion; those potentially eligible were then reviewed in full text. Discrepancies between the reviewers were resolved by consensus. Study selection was performed using the Rayyan software (<https://www.rayyan.ai/>).

Data Charting Process and Items

Two researchers independently charted data from the selected studies using a standardized Microsoft Excel spreadsheet; any discrepancies were resolved by consensus. The following data were collected: main author, year, country/countries from which study participants were recruited, study design, subject characteristics, number of subjects, renal function, antibiotics used, therapeutic target considered for population pharmacokinetics analysis or therapeutic drug monitoring (TDM), the susceptibility MIC breakpoint considered, dosing recommendations (when applicable) and main findings/conclusions. A narrative and qualitative approach was used to summarize the findings due to the high heterogeneity between the included studies.

TABLE 1 | Search strategy.

MEDLINE via Pubmed

```
((pediatric[MeSH Terms]) OR (child[MeSH Terms]) OR (children[MeSH Terms]) OR pediatric* OR paediatr*) AND ((sepsis[MeSH Terms]) OR (septicemia[MeSH Terms]) OR (septic shock[MeSH Terms])) AND ((beta lactam[MeSH Terms]) OR (beta-lactam[MeSH Terms]) OR (β-lactam[MeSH Terms])) AND ((therapeutic drug monitoring[MeSH Terms]) OR (drug monitoring[MeSH Terms]) OR (drug concentration) OR (plasma concentration) OR (serum concentration)).
```

EMBASE

```
('child'/exp OR pediatric* OR paediatr*) AND ('sepsis'/exp OR 'septicemia'/exp OR 'septic shock'/exp) AND 'beta lactam'/exp AND ('drug monitoring'/exp OR 'drug concentration' OR 'plasma concentration' OR 'serum concentration').
```

Web of science

```
((pediatric) OR (child) OR (children) OR pediatric* OR paediatr*) AND ((sepsis) OR (septicemia) OR (septic shock)) AND ((beta lactam) OR (beta-lactam) OR (β-lactam)) AND ((therapeutic drug monitoring) OR (drug monitoring) OR (drug concentration) OR (plasma concentration) OR (serum concentration)).
```

RESULTS

Our literature search yielded 118 records, of which 28 were removed as they were duplicates. The remaining 90 articles were screened for eligibility; in total, 21 studies were included in this review (Figure 1).

Studies were published between 2014 and 2021 and all of them were available in English language; most (57%) were population-based PK studies. The number of subjects varied from 1 (case reports) to 1,272, and 13 different antibiotics were investigated. Table 2 summarizes their characteristics and main findings.

The most described strategies that were applied to increase the PTA were: extending infusion duration ($n = 10$), shortening dose interval ($n = 6$), TDM ($n = 4$) and increasing dose ($n = 3$).

Penicillins

De Cock et al. investigated amoxicillin-clavulanic acid PTA with target efficacy defined as 40% $fT > MIC$ against strains with MIC of 8 mg/L for amoxicillin. With commonly prescribed doses (25 mg/kg every 6–12 h), target attainment was estimated at 48–73%. The authors demonstrated that more frequent doses (25 mg/kg every 4 h) achieve higher PTA: 96–99%. They also reported that a 1-h infusion was superior to bolus dosing for patients with augmented renal clearance (12).

Mir et al. considered a target of 50% $fT > MIC$ to investigate target attainment in patients receiving high doses of oral amoxicillin (75–100 mg/kg/day). The resultant concentrations exceeded the susceptibility breakpoint for *S. pneumoniae* strains (2 mg/L) (13). Ericson et al. conducted a large cohort with 1,272 infants receiving ampicillin and they also considered a target of 50% $fT > MIC$. *Streptococcus agalactiae* (MIC 0.25 mg/L) was the most frequent isolated pathogen (>60%). They found that achieving this target was associated with decreased duration of bacteremia, which occurred more frequently with patients who received high ampicillin doses with a short dosing interval (≥ 75 mg/kg/dose every 6 or 8 h) (14).

In a recent phase II clinical trial of azlocillin in preterm and term infants ≤ 72 h old, Wu et al. conducted Monte Carlo simulations with a desired target of 70% $fT > MIC$ up to 32 mg/L. The authors showed that increasing the frequency (100 mg/kg every 8 h) achieved the target in 91.2% of infants compared to 63.1% of PTA with 100 mg/kg, every 12 h, both with a 0.5 h infusion (15).

Five studies reported PK/PD data of piperacillin (16–20). Chongcharoenyanon et al. designed a randomized controlled trial to compare piperacillin target attainment between extended infusion and intermittent bolus methods in children. Those who received extended infusion had a higher proportion of patients who achieved 50% $fT > MIC$ [90.9% vs. 60.0% ($P = 0.11$)] and 50% $fT > 4x MIC$ [72.7% vs. 30.0% ($P = 0.06$)], but the authors could not demonstrate significant differences in clinical outcomes between groups (20). The other four studies used a population pharmacokinetics approach to evaluate PTA of different simulated dosing regimens (16–19). They considered a minimum target of 50% to 60% $fT > MIC$ and suggested extend

infusion duration (2–4 h) to maintain plasma concentrations above the susceptibility breakpoint of *Pseudomonas aeruginosa* (16 mg/L). Nichols et al. also carried out Monte Carlo simulations considering 100% $fT > MIC$, while Beranger et al. tested four different targets: 50% $fT > MIC$, 50% $fT > 4x MIC$, 100% $fT > MIC$ and 100% $fT > 4x MIC$. For these higher targets, not even extended infusion regimens were sufficient, but only when piperacillin was administered by continuous infusion (17, 19).

Cephalosporins

Leroux et al. considered a target of 75% $fT > MIC$ for cefotaxime analysis in neonates and infants. Empiric regimen underdosed septic older newborns with only 53–68% of PTA against pathogens with MICs > 2 mg/L, so the authors have established 50 mg/kg twice a day to four times a day according to gestational age and postnatal age (21). Béranger et al. and Hartman et al. defined higher targets of 100% $fT > MIC$ and 100% $fT > 4x MIC$. They only found satisfactory target achievement against strains with low MIC (≤ 0.5 mg/L) with usual dose regimens of 100–150 mg/kg/day and suggested applying continuous infusion in septic children (22, 23).

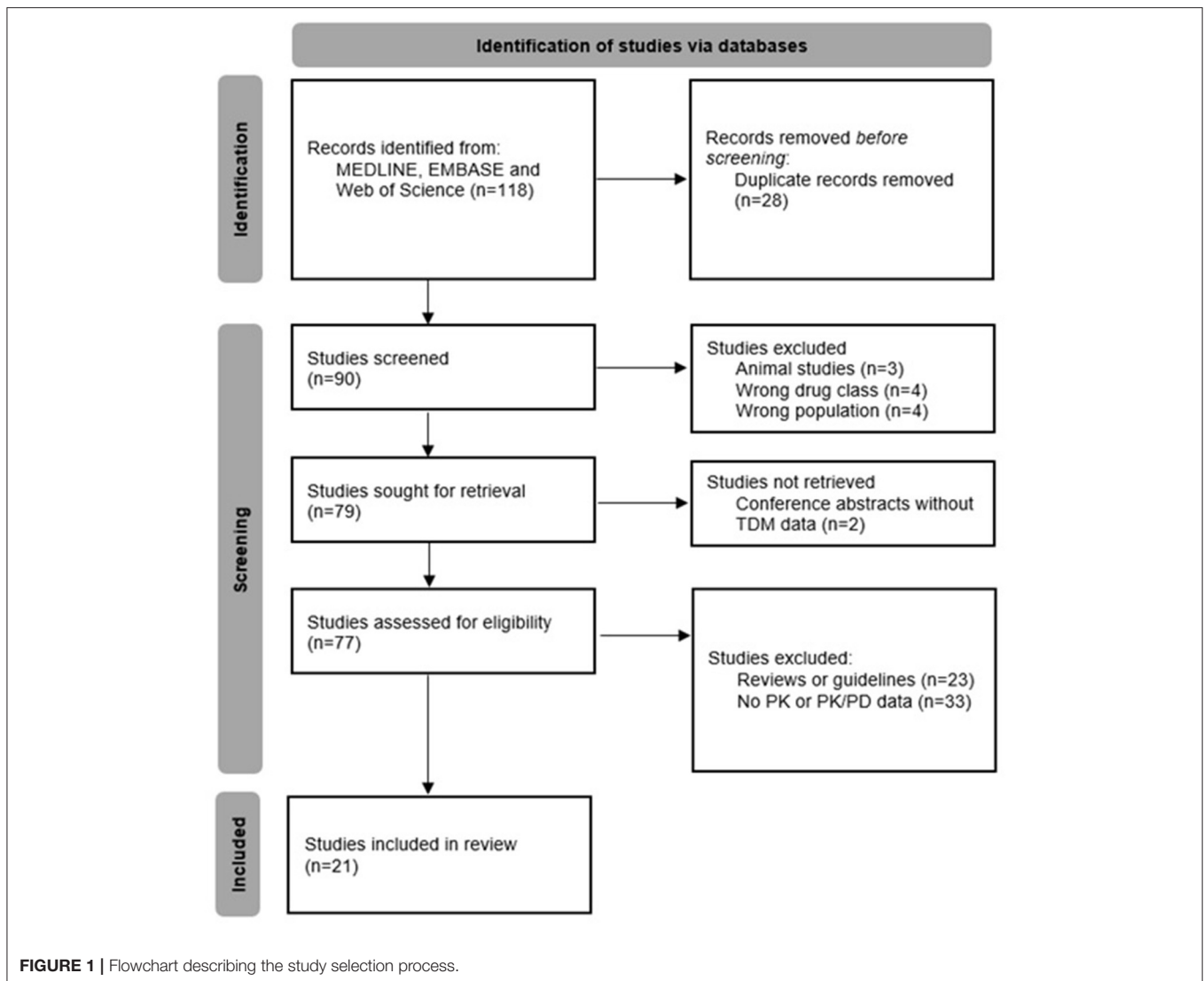
We identified two population pharmacokinetics studies with ceftazidime (24, 25). Li et al. set the target to 70% $fT > MIC$ to test PTA of initial doses in neonates against pathogens with MIC up to 8 mg/L. Simulations with the initial dose of 25 mg/kg twice daily achieve the target only for newborn with postnatal age ≤ 3 days. They proposed higher initial doses of 30–40 mg/kg every 8 h for optimal PTA (25). Bui et al. studied older patients (up to 12 years) and considered the targets of 60 and 90% $fT > MIC$. Simulations with ceftazidime recommended dose of 150 mg/kg/day as 0.5 h-intermittent infusion resulted in PTA of 48.3% in patients with cystic fibrosis, compared to 75.4% in other children (for 60% $fT > MIC$). For the same MIC and dosing, continuous infusion enabled more than 99% of all patients to reach the target (24).

Ceftazidime-avibactam was cited in one case report. A 4-year-old immunocompromised child, who developed a bloodstream infection by *Enterobacter hormaechei* producing *Klebsiella pneumoniae* Carbapenemase-4 and New Delhi metallo- β -lactamase, was successfully treated with antibiotic synergy of ceftazidime-avibactam and aztreonam. The authors measured serum concentrations and considered a target of 100% $fT > MIC$ for both agents to perform TDM analysis (26).

Cies et al. published TDM outcomes in 7 septic patients receiving ceftaroline 15 mg/kg every 6 h. They considered a target of 40% $fT > 4-6x MIC$ for doses adjustments against *Staphylococcus spp.* (MIC ≤ 2 mg/L). The patients presented different PK changes compared to healthy data and all of them had adjustments made to their dosing regimens to meet the PK/PD endpoint against isolated methicillin-resistant *Staphylococcus aureus* (MRSA). All patients achieved a positive microbiological and clinical response (27).

Carbapenems and Monobactam

A TDM case report of meropenem described the clinical course of a 2-year-old girl with *Serratia marcescens* (meropenem MIC < 0.25 mg/L) ventriculitis. The target was set to 40% $fT >$



MIC and the initial dose of 40 mg/kg every 6 h with 0.5 h-intermittent infusion was insufficient. The meropenem regimen was changed to a continuous infusion of 200 mg/kg/day and then the serum trough level and cerebrospinal fluid levels were enough for cerebrospinal fluid sterilization and successful clinical outcome (28).

Cies et al. considered the target of 40% $fT > MIC$ and also 80% $fT > MIC$ to investigate PTA of different infusion durations with 120–160 mg/kg/day of meropenem. For the first one, the 3 h-extended infusion provide appropriate exposures against susceptible pathogens. When considering 80% $fT > MIC$, continuous infusion was needed (29).

A TDM analysis of aztreonam was reported in a case of a 16-year-old tetraplegic boy with history of cervical spinal cord injury, chronic respiratory failure, and tracheostomy, hospitalized for empyema caused by *Pseudomonas aeruginosa* only sensitive to aztreonam (MIC of 2–6 mg/L). The authors established a target of 40% $fT > MIC$ and the initial dose regimen

of 2 g every 6 h of aztreonam required prolonged infusions over 4 h to reach the target. The patient presented further negative cultures (30).

Mixed

A bedside monitoring cohort study published by Cies et al. aimed to verify whether commonly prescribed beta-lactam dosing regimens achieve 40% $fT > 4-6 \times MIC$ in critically ill children, which is the most used target at their institution. They observed that 73 of 82 patients (95%) had subtherapeutic concentrations and dose adjustments (e.g., dosing interval shortening or prolonging infusion duration) were made within 48 h of beta-lactam initiation. The authors also have established an upper limit of 100% $fT > 6 \times MIC$ and 5 patients (6.4%) presented suprathreshold concentrations and had reductions in their dosing regimens. After individual dose adjustments, all patients with a positive culture achieved microbiological response with eradication of isolated pathogens (31).

TABLE 2 | Characteristics of the included papers.

Citation	Region	Study design	Subjects characteristics	No. subjects	Median ClCr (ml/min/1.73 m ²) or Cr (mg/dL)	Antibiotic	Therapeutic target	MIC*	Dosing recommendations	Strategy applied or suggested to increase the PTA
De Cock et al. (12)	Belgium	Population PK study	ICU Patients between 1 month and 15 years	50	0.21 mg/dL	Amoxicillin-clavulanic acid	40% <i>fT</i> >MIC	8 mg/L	25 mg/kg q4h (1 h-infusion)	To shorten the interval and extend infusion duration
Mir et al. (13)	Pakistan	Prospective cohort	Infants <59 days of age	20	NR	Amoxicillin	50% <i>fT</i> >MIC	2 mg/L	75–100 mg/kg/day (oral)	To increase the dose
Ericson et al. (14)	United States of America	Retrospective cohort	Infants <28 days of age	1272	0.2–2.5 mg/dL	Ampicillin	50% <i>fT</i> >MIC	8 mg/L	≥75mg/kg/dose every 6 or 8 h)	To increase the dose and shorten the interval
Wu et al. (15)	China	Population PK study	preterm and term infants ≤72h old	45	NR	Azlocillin	70% <i>fT</i> >MIC	8 mg/L	100 mg/kg q6-8h (0.5h-infusion)	To shorten the interval
Cies et al. (16)	United States of America	Population PK study	ICU patients between 9 months and 6 years	13	NR	Piperacillin-tazobactam	50% <i>fT</i> >MIC	16 mg/L	100 mg/kg q6h (3h- infusion); 400 mg/kg/day CI	To extend infusion duration
Nichols et al. (17)	United States of America	Population PK study	ICU patients between 9 months and 11 years	12	103 mL/min/1.73 m ²	Piperacillin-tazobactam	(a) 50% <i>fT</i> >MIC (b) 100% <i>fT</i> >MIC	16 mg/L	(a) 80-100 mg/kg q8h (4h-infusion) (b) None of the tested regimens	To extend infusion duration
De Cock et al. (18)	Belgium	Population PK study	ICU patients between 1 month and 15 years	47	109 mL/min/1.73 m ²	Piperacillin-tazobactam	60% <i>fT</i> >MIC	16 mg/L	75-100 mg/kg q4h (1-2h-infusion); 300 mg/kg/day CI	To increase the dose and shorten the interval
Beranger et al. (19)	France	Population PK study	All children aged <18 years	50	142 mL/min/1.73 m ²	Piperacillin-tazobactam	(a) 50% <i>fT</i> >MIC (b) 50% <i>fT</i> >4x MIC (c) 100% <i>fT</i> >MIC (d) 100% <i>fT</i> >4x MIC	16 mg/L	(a) 75-100 mg/kg q6–8 (3–4 h-infusion) (b) NR (c) 75–100 mg/kg/day CI (d) NR	To extend infusion duration
Chongcharoenyanon et al. (20)	Thailand	Prospective randomized trial	ICU Patients between 1 month and 18 years	90	NR	Piperacillin-tazobactam	(a) 50% <i>fT</i> >4×MIC (b) 50% <i>fT</i> >MIC	16 mg/L	100 mg/kg q8 h (4 h-infusion)	To extend infusion duration
Leroux et al. (21)	France	Population PK study	Neonates and young infants (postmenstrual age under 44 weeks)	100	0.49 mg/dL	Cefotaxime	75% <i>fT</i> >MIC	2 mg/L	50 mg/kg q6–12 h (0.25–0.5 h infusion)	To shorten the interval
Beranger et al. (22)	France	Population PK study	All children aged <18 years	49	171 mL/min/1.73 m ²	Cefotaxime	(a) 100% <i>fT</i> >4×MIC (b) 100% <i>fT</i> >MIC	0.5 mg/L	100 mg/kg/day CI	To extend infusion duration
Hartman et al. (23)	Netherlands	Secondary analysis of a randomized controlled trial	ICU Patients between 1 month and 18 years	37	0.46 mg/dL	Cefotaxime	(a) 100% <i>fT</i> >4× MIC (b) 100% <i>fT</i> >MIC	2 mg/L	NR	None

(Continued)

TABLE 2 | Continued

Citation	Region	Study design	Subjects characteristics	No. subjects	Median ClCr (ml/min/1.73 m ²) or Cr (mg/dL)	Antibiotic	Therapeutic target	MIC*	Dosing recommendations	Strategy applied or suggested to increase the PTA
Bui et al. (24)	France	Population PK study	ICU Patients between 28 days and 12 years	108	198 mL/min/1.73 m ²	Ceftazidime	(a) 60% <i>fT</i> >MIC (b) 90% <i>fT</i> >MIC	8 mg/L	90-150 mg/kg/day CI	To extend infusion duration
Li et al. (25)	China	population PK study	Neonates and young infants (postmenstrual age under 48 weeks)	146	0.38 mg/dL	Ceftazidime	70% <i>fT</i> >MIC	8 mg/L	25–30 mg/kg q8/12 (infusion duration NR)	To increase the dose and shorten the interval
Yasmin et al. (26)	United States of America	Case report	4-year-old child	1	77.4 mL/min/1.73 m ²	Ceftazidime-Avibactam and aztreonam	100% <i>fT</i> > MIC	8 mg/L	NR	TDM and antibiotic synergy
Cies et al. (27)	United States of America	Case series	ICU Patients between 1 year and 13 years	7	>60 mL/min/1.73 m ²	Ceftaroline	40% <i>fT</i> >4–6× MIC	2 mg/L	NR	TDM
Cies et al. (28)	United States of America	Case report	2-year-old girl	1	157 mL/min/1.73 m ²	Meropenem	40% <i>fT</i> >MIC	8 mg/L	NR	TDM
Cies et al. (29)	United States of America	Population PK study	ICU Patients between 1 year and 15 years	9	168 mL/min/1.73 m ²	Meropenem	(a) 40% <i>fT</i> >MIC (b) 80% <i>fT</i> >MIC	2 mg/L	40 mg/kg q6–8 h (3-4h infusion); 120 mg/kg q24 h CI	To extend infusion duration
Cies et al. (30)	United States of America	Case report	16-year-old boy	1	NR	Aztreonam	40% <i>fT</i> >MIC	16 mg/L	NR	To extend infusion duration
Cies et al. (31)	United States of America	Retrospective cohort	All children aged <18 years	82	>60 mL/min/1.73 m ²	Ampicillin, cefazolin, cefepime, cefotaxime, ceftaroline, doripenem, meropenem, piperacillin/tazobactam	(a) 40% <i>fT</i> >4–6×MIC (b) 40% <i>fT</i> >MIC (c) 100% <i>fT</i> >MIC	NR	NR	TDM

*Susceptibility breakpoint considered by the study.

PK, pharmacokinetics; PD, pharmacodynamics; ICU, intensive care unit; PTA, percentage of target attainment; TDM, therapeutic drug monitoring; *fT*>MIC, time that free concentrations remain above the minimum inhibitory concentration (MIC) as a function of the dosing interval; NR, not reported; CI, continuous infusion.

DISCUSSION

Our scoping review of the literature has identified diverse therapeutic targets for beta-lactams in PK studies involving septic pediatric patients, ranging from to 40% $fT > MIC$ to 100% $fT > 6 \times MIC$. The empiric recommended doses of beta-lactams commonly fail to achieve the target against less susceptible pathogens, and the most described strategies to increase target attainment were increasing dosing or frequency of administration and extending the infusion time. Furthermore, monitoring beta-lactam serum concentrations in clinical practice is described as a valuable tool to overcome PK variability of critically ill patients through individual dosing adjustments.

None of the included studies were designed to identify whether reaching higher targets leads to reduced morbidity or mortality. The study conducted by Ericson et al. found that ampicillin concentrations above the MIC for $\geq 50\%$ of the dosing interval was associated with decreased duration of bacteremia, but no broad spectrum antibiotics were investigated (14). Data from prospective and randomized clinical trials with cefepime and ceftazidime in septic adults showed significant greater clinical cure rates and bacteriological eradication when patients achieved 100% $fT > MIC$ compared with those who did not (32). The DALI study, a multinational point-prevalence study with beta-lactams, also found that adult patients achieving 100% $fT > MIC$ are more likely to have positive clinical outcomes with lower levels of sickness severity (33). Recent guidelines suggest that 100% $fT > MIC$ is a reasonable target for critically ill patients, mostly based on adult studies, although even higher targets of 100% $fT > 4-10 \times MIC$ have been used in clinical practice (10, 34). On the other hand, PK/PD parameters of newer antibiotics (e.g., ceftolozane-tazobactam) have been investigated phase-3 studies and converged with targets $< 100\% fT > MIC$ (35, 36).

Although most studies have suggested that beta-lactams are usually under-dosed, supratherapeutic beta-lactam concentrations may also have negative consequences. Only one study, conducted by Cies et al., defined the threshold for beta-lactam concentrations to reduce the risk of toxicity, with an upper limit of 100% $fT > 6 \times MIC$ (31), while a previous adult trial trough considered trough levels up to $10 \times MIC$ (37). Neurotoxicity has the strongest association with elevated beta-lactams concentrations (38–41), but no study of this review described any neurotoxicity case. Other previously described beta-lactams-associated adverse reactions as nephrotoxicity, hepatotoxicity and cytopenias seem to be concentration independent and they have low incidence in pediatric patients (42).

The Surviving Sepsis Campaign guidelines for the management of septic shock and sepsis-associated organ dysfunction in children recommends individualizing antimicrobial therapy based on PK/PD principles to provide more effective and safer treatments of life-threatening infections (3). This includes considering the potential PK changes resulting from inflammatory response and/or organ dysfunction for initial dosing selection, applying different administration techniques such as once-daily dosing or prolonged infusion and dosing adjustments based on serum concentrations and individual PK parameters estimated with

kinetic equations or Bayesian softwares (43). Most authors of the included articles recommended extending the infusion time (which includes prolonged and continuous infusions) and increasing dosing frequency to increase the PTA of beta-lactams (12, 16, 17, 19, 24, 29, 44). Chongcharoenyanon et al. demonstrated in a prospective, randomized trial that septic children receiving extended infusion of piperacillin present significantly higher target attainment and they recommended this approach should be implemented in clinical practice (20).

The bedside monitoring cohort study of Cies et al. impressively found that 95% of the children receiving beta-lactams were outside of the therapeutic window and it reinforces the difficulty of reaching the therapeutic target with general dosing recommendations for patients who have wide inter and intra-individual pharmacokinetic variation (31). Although beta-lactams TDM is not widely applied (5), the cases reported by Cies and Yasmin et al. demonstrate the usefulness of verifying beta-lactams concentration in clinical practice to optimize the doses in clinical practice (26–28, 30). Unfortunately, commercially assays are not yet available for beta-lactams as there are for aminoglycosides and glycopeptides and few hospitals can perform high-performance liquid chromatography or mass spectrometry essays (34). Others barriers to widespread incorporation of beta-lactam TDM into clinical practice are insufficient knowledge among health care providers, lack of cost-effectiveness evaluation and, as cited above, availability of bacterial susceptibility information (45).

Guidelines to standardize beta-lactam TDM practices are necessary but further randomized clinical trials are still required to define which therapeutic targets are associated with the best bacteriological and clinical responses in pediatric patients. The toxic thresholds for beta-lactams also require additional investigations.

Our scoping review presents some limitations. Although we implemented a systematic approach to map the current and updated evidence on beta-lactams TDM in pediatric septic patients, some studies might have been missed if they were not indexed in the searched databases, published in languages other than English, Spanish and Portuguese or before 2010. As we have not standardized the criterion for the diagnosis of sepsis, our review may have included studies with different definitions of sepsis and it limits the compilation of our findings. However, the possible variation in the sepsis definitions of each study probably did not influence the choice of the therapeutic target used. Publication bias was possible as some studies may not have been published due to negative results. This review has not assessed the methodological quality of the studies as scoping reviews aim to identify, map and describe all the available evidence regardless of their quality.

CONCLUSION

Our scoping review has identified a wide range of therapeutic targets for beta-lactams in pediatric studies, from to 40% $fT > MIC$ to 100% $fT > 6 \times MIC$. None of the included studies have identified effects of target attainment on morbidity or mortality and further randomized controlled trials are required to define

the therapeutic target associated with the best clinical outcomes. The main described strategies to increase the PTA of empirical doses against sensitive pathogens were to increase the infusion duration or dosing frequency. Due to the unpredictability of pharmacokinetics in children and the pathophysiological changes during sepsis, the implementation of beta-lactam TDM may potentially be a valuable tool to maximize therapeutic target attainment.

REFERENCES

- Balamuth F, Weiss SL, Neuman MI, Scott H, Brady PW, Paul R, et al. et al. Pediatric severe sepsis in US children's hospitals. *Pediatr Crit Care Med.* (2014) 15:798–805. doi: 10.1097/PCC.0000000000000225
- de Souza DC, Shieh HH, Barreira ER, Ventura AMC, Bouso A, Troster EJ. LAPSES group. Epidemiology of sepsis in children admitted to PICUs in South America. *Pediatr Crit Care Med.* (2016) 17:727–34. doi: 10.1097/PCC.0000000000000847
- Weiss SL, Peters MJ, Alhazzani W, Agus MSD, Flori HR, Inwald DP, et al. Surviving sepsis campaign international guidelines for the management of septic shock and sepsis-associated organ dysfunction in children. *Pediatr Crit Care Med.* (2020) 21:e52–e106. doi: 10.1097/PCC.00000000000002198
- Lodise TP, Lomaestro BM, Drusano GL. Society of Infectious Diseases Pharmacists. Application of antimicrobial pharmacodynamic concepts into clinical practice: focus on beta-lactam antibiotics: insights from the Society of Infectious Diseases. *Pharmacists Pharmacotherapy.* (2006) 26:1320–32. doi: 10.1592/phco.26.9.1320
- Wong G, Brinkman A, Benefield RJ, Carlier M, De Waele JJ, El Helali N, et al. An international, multicentre survey of β -lactam antibiotic therapeutic drug monitoring practice in intensive care units. *J Antimicrob Chemother.* (2014) 69:1416–23. doi: 10.1093/jac/dkt523
- Le J, Bradley JS. Optimizing antibiotic drug therapy in pediatrics: current state and future needs. *J Clin Pharmacol.* (2018) 58:S108–22. doi: 10.1002/jcph.1128
- Lu H, Rosenbaum S. Developmental pharmacokinetics in pediatric populations. *J Pediatr Pharmacol Ther.* (2014) 19:262–76. doi: 10.5863/1551-6776-19.4.262
- Roberts JA, Lipman J. Pharmacokinetic issues for antibiotics in the critically ill patient. *Crit Care Med.* (2009) 37:840–51. doi: 10.1097/CCM.0b013e3181961bff
- Ulldemolins M, Vaquer S, Llaurodó-Serra M, Pontes C, Calvo G, Soy D, et al. Beta-lactam dosing in critically ill patients with septic shock and continuous renal replacement therapy. *Crit Care.* (2014) 18:227. doi: 10.1186/cc13938
- Guilhaumou R, Benaboud S, Bennis Y, Dahyot-Fizelier C, Dailly E, Gandia P, et al. Optimization of the treatment with beta-lactam antibiotics in critically ill patients—guidelines from the French Society of Pharmacology and Therapeutics (Société Française de Pharmacologie et Thérapeutique—SFPT) and the French Society of Anaesthesia and Intensive Care Medicine (Société Française d'Anesthésie et Réanimation—SFAR). *Critical Care.* (2019) 23:104. doi: 10.1186/s13054-019-2378-9
- Singer M, Deutschman CS, Seymour CW, Shankar-Hari M, Annane D, Bauer M, et al. The third international consensus definitions for sepsis and septic shock (Sepsis-3). *JAMA.* (2016) 315:801–10. doi: 10.1001/jama.2016.0287
- De Cock PAJG, Standing JE, Barker CIS, de Jaeger A, Dhont E, Carlier M, et al. Augmented renal clearance implies a need for increased amoxicillin-clavulanic acid dosing in critically ill children. *Antimicrob Agents Chemother.* (2015) 59:7027–35. doi: 10.1128/AAC.01368-15
- Mir F, Pearce RE, Baig-Ansari N, Qazi S, Barrett JS, Abdel-Rahman S, et al. Serum amoxicillin levels in young infants (0-59 days) with sepsis treated with oral amoxicillin. *Arch Dis Child.* (2020) 105:1208–14. doi: 10.1136/archdischild-2019-317342
- Ericson JE, Hornik CP, Greenberg RG, Clark RH, Tremoulet AH, Le J, et al. Best pharmaceuticals for children act – pediatric trials network. Paradoxical antibiotic effect of ampicillin: use of a population pharmacokinetic model

AUTHOR CONTRIBUTIONS

RM, GP, and GT contributed to the study design, performed the literature review, screened titles and abstracts, and extracted data from the selected studies. VJ and JT collaborated in writing and editing the manuscript. DS and SS reviewed the manuscript. All authors have read and agreed to the published version of the manuscript.

- to evaluate a clinical correlate of the eagle effect in infants with bacteremia. *Pediatr Infect Dis J.* (2020) 39:725–9. doi: 10.1097/INF.0000000000002663
- Wu Y-E, Wang T, Yang H-L, Tang B-H, Kong L, Li X, et al. Population pharmacokinetics and dosing optimization of azlocillin in neonates with early-onset sepsis: a real-world study. *J Antimicrob Chemother.* (2021) 76:699–709. doi: 10.1093/jac/dkaa468
 - Cies JJ, Shankar V, Schlichting C, Kuti JL. Population pharmacokinetics of piperacillin/tazobactam in critically ill young children. *Pediatr Infect Dis J.* (2014) 33:168–73. doi: 10.1097/INF.0b013e3182a743c7
 - Nichols K, Chung EK, Knoderer CA, Buenger LE, Healy DP, Dees J, et al. Population pharmacokinetics and pharmacodynamics of extended-infusion piperacillin and tazobactam in critically ill children. *Antimicrob Agents Chemother.* (2015) 60:522–31. doi: 10.1128/AAC.02089-15
 - De Cock PAJG, van Dijkman SC, de Jaeger A, Willems J, Carlier M, Verstraete AG, et al. Dose optimization of piperacillin/tazobactam in critically ill children. *J Antimicrob Chemother.* (2017) 72:2002–11. doi: 10.1093/jac/dkx093
 - Béranger A, Benaboud S, Urien S, Moulin F, Bille E, Lesage F, et al. Piperacillin population pharmacokinetics and dosing regimen optimization in critically ill children with normal and augmented renal clearance. *Clin Pharmacokinet.* (2019) 58:223–33. doi: 10.1007/s40262-018-0682-1
 - Chongcharoenyanon T, Wacharachaisurapol N, Anugulruengkitt S, Maimongkol P, Anunsittichai O, Sophonphan J, et al. Comparison of piperacillin plasma concentrations in a prospective randomised trial of extended infusion vs. intermittent bolus of piperacillin/tazobactam in paediatric patients. *Int J Infect Dis.* (2021) 108:102–8. doi: 10.1016/j.ijid.2021.05.044
 - Leroux S, Roué J-M, Gouyon J-B, Biran V, Zheng H, Zhao W, et al. Population and developmental pharmacokinetic analysis to evaluate and optimize cefotaxime dosing regimen in neonates and young infants. *Antimicrob Agents Chemother.* (2016) 60:6626–34. doi: 10.1128/AAC.01045-16
 - Béranger A, Oualha M, Urien S, Genuini M, Renolleau S, Aboura R, et al. Population pharmacokinetic model to optimize cefotaxime dosing regimen in critically ill children. *Clin Pharmacokinet.* (2018) 57:867–75. doi: 10.1007/s40262-017-0602-9
 - Hartman SJF, Boeddha NP, Ekinci E, Koch BCP, Donders R, Hazelzet JA, et al. Target attainment of cefotaxime in critically ill children with meningococcal septic shock as a model for cefotaxime dosing in severe pediatric sepsis. *Eur J Clin Microbiol Infect Dis.* (2019) 38:1255–60. doi: 10.1007/s10096-019-03535-w
 - Bui S, Facchin A, Ha P, Bouchet S, Leroux S, Nacka F, et al. Population pharmacokinetics of ceftazidime in critically ill children: impact of cystic fibrosis. *J Antimicrob Chemother.* (2020) 75:2232–9. doi: 10.1093/jac/dkaa170
 - Li X, Qi H, Jin F, Yao B-F, Wu Y-E, Qi Y-J, et al. Population pharmacokinetics-pharmacodynamics of ceftazidime in neonates and young infants: Dosing optimization for neonatal sepsis. *Eur J Pharm Sci.* (2021) 163:105868. doi: 10.1016/j.ejps.2021.105868
 - Yasmin M, Fouts DE, Jacobs MR, Haydar H, Marshall SH, White R, et al. Monitoring ceftazidime-avibactam and aztreonam concentrations in the treatment of a bloodstream infection caused by a multidrug-resistant enterobacter sp. Carrying both klebsiella pneumoniae carbapenemase-4 and New Delhi metallo- β -lactamase-1. *Clin Infect Dis.* (2020) 71:1095–8. doi: 10.1093/cid/ciz1155
 - Cies JJ, Moore WS, Enache A, Chopra A. Cefaroline for suspected or confirmed invasive methicillin-resistant staphylococcus aureus: a

- pharmacokinetic case series. *Pediatr Crit Care Med.* (2018) 19:e292–9. doi: 10.1097/PCC.0000000000001497
28. Cies JJ, Moore WS, Calaman S, Brown M, Narayan P, Parker J, et al. Pharmacokinetics of continuous-infusion meropenem for the treatment of *Serratia marcescens* ventriculitis in a pediatric patient. *Pharmacotherapy.* (2015) 35:e32–36. doi: 10.1002/phar.1567
 29. Cies JJ, Moore WS, Enache A, Chopra A. Population pharmacokinetics and pharmacodynamic target attainment of meropenem in critically ill young children. *J Pediatr Pharmacol Ther.* (2017) 22:276–85. doi: 10.5863/1551-6776-22.4.276
 30. Cies JJ, LaCoursiere RJ, Moore WS, Chopra A. Therapeutic drug monitoring of prolonged infusion aztreonam for multi-drug resistant *Pseudomonas aeruginosa*: a case report. *J Pediatr Pharmacol Ther.* (2017) 22:467–70. doi: 10.5863/1551-6776-22.6.467
 31. Cies JJ, Moore WS, Enache A, Chopra A. β -lactam therapeutic drug management in the PICU. *Crit Care Med.* (2018) 46:272–9. doi: 10.1097/CCM.0000000000002817
 32. McKinnon PS, Paladino JA, Schentag JJ. Evaluation of area under the inhibitory curve (AUC) and time above the minimum inhibitory concentration ($T > MIC$) as predictors of outcome for cefepime and ceftazidime in serious bacterial infections. *Int J Antimicrob Agents.* (2008) 31:345–51. doi: 10.1016/j.ijantimicag.2007.12.009
 33. Roberts JA, Paul SK, Akova M, Bassetti M, De Waele JJ, Dimopoulos G, et al. DALLI: defining antibiotic levels in intensive care unit patients: are current β -lactam antibiotic doses sufficient for critically ill patients? *Clin Infect Dis.* (2014) 58:1072–83. doi: 10.1093/cid/ciu027
 34. Fratoni AJ, Nicolau DP, Kuti JL, A. guide to therapeutic drug monitoring of β -lactam antibiotics. *Pharmacotherapy.* (2021) 41:220–33. doi: 10.1002/phar.2505
 35. Kollef MH, Nováček M, Kivistik Ü, Réa-Neto Á, Shime N, Martin-Loeches I, et al. Ceftolozane-tazobactam vs. meropenem for treatment of nosocomial pneumonia (ASPECT-NP): a randomised, controlled, double-blind, phase 3, non-inferiority trial. *Lancet Infect Dis.* (2019) 19:1299–311. doi: 10.1016/S1473-3099(19)30403-7
 36. Xiao AJ, Miller BW, Huntington JA, Nicolau DP. Ceftolozane/tazobactam pharmacokinetic/pharmacodynamic-derived dose justification for phase 3 studies in patients with nosocomial pneumonia. *J Clin Pharmacol.* (2016) 56:56–66. doi: 10.1002/jcph.566
 37. De Waele JJ, Carrette S, Carlier M, Stove V, Boelens J, Claeys G, et al. Therapeutic drug monitoring-based dose optimisation of piperacillin and meropenem: a randomised controlled trial. *Intensive Care Med.* (2014) 40:380–7. doi: 10.1007/s00134-013-3187-2
 38. Imani S, Buscher H, Marriott D, Gentili S, Sandaradura I. Too much of a good thing: a retrospective study of β -lactam concentration-toxicity relationships. *J Antimicrob Chemother.* (2017) 72:2891–7. doi: 10.1093/jac/dkx209
 39. Quinton M-C, Bodeau S, Kontar L, Zerbib Y, Maizel J, Slama M, et al. Neurotoxic concentration of piperacillin during continuous infusion in critically ill patients. *Antimicrob Agents Chemother.* (2017) 61:e00654–17. doi: 10.1128/AAC.00654-17
 40. Bricheux A, Lenggenhager L, Hughes S, Karmime A, Lescuyer P, Huttner A. Therapeutic drug monitoring of imipenem and the incidence of toxicity and failure in hospitalized patients: a retrospective cohort study. *Clin Microbiol Infect.* (2019) 25:383.e1–383.e4. doi: 10.1016/j.cmi.2018.11.020
 41. Payne LE, Gagnon DJ, Riker RR, Seder DB, Glisic EK, Morris JG, et al. Cefepime-induced neurotoxicity: a systematic review. *Crit Care.* (2017) 21:276. doi: 10.1186/s13054-017-1856-1
 42. Barreto EF, Webb AJ, Pais GM, Rule AD, Jannetto PJ, Scheetz MH. Setting the beta-lactam therapeutic range for critically ill patients: is there a floor or even a ceiling? *Critical Care Explorations.* (2021) 3:e0446. doi: 10.1097/CCE.0000000000000446
 43. Phe K, Heil EL, Tam VH. Optimizing pharmacokinetics-pharmacodynamics of antimicrobial management in patients with sepsis: a review. *J Infect Dis.* (2020) 222:S132–41. doi: 10.1093/infdis/jiaa118
 44. Salvador E, Oualha M, Bille E, Beranger A, Moulin F, Benaboud S, et al. Population pharmacokinetics of ceftazidime in critically ill children infected with methicillin-sensitive *Staphylococcus aureus*. *Clinical Microbiology and Infection.* (2021) 27:413–9. doi: 10.1016/j.cmi.2020.04.022
 45. Abdulla A, van den Broek P, Ewoldt TMJ, Muller AE, Endeman H, Koch BCP. Barriers and facilitators in the clinical implementation of beta-lactam therapeutic drug monitoring in critically ill patients: a critical review. *Ther Drug Monit.* (2022) 44:112–20. doi: 10.1097/FTD.0000000000000937

Conflict of Interest: The authors declare that the research was conducted in the absence of any commercial or financial relationships that could be construed as a potential conflict of interest.

Publisher's Note: All claims expressed in this article are solely those of the authors and do not necessarily represent those of their affiliated organizations, or those of the publisher, the editors and the reviewers. Any product that may be evaluated in this article, or claim that may be made by its manufacturer, is not guaranteed or endorsed by the publisher.

Copyright © 2022 Morales Junior, Pereira, Tiguman, Juodinis, Telles, de Souza and Santos. This is an open-access article distributed under the terms of the Creative Commons Attribution License (CC BY). The use, distribution or reproduction in other forums is permitted, provided the original author(s) and the copyright owner(s) are credited and that the original publication in this journal is cited, in accordance with accepted academic practice. No use, distribution or reproduction is permitted which does not comply with these terms.