

Article

Usability and Clinical Performance Characteristics of the Asante HIV1/2 Test by Trained Users in Two African Sites

Mohammed Majam¹, Naleni Rhagnath¹, Vanessa Msolomba¹ , Leanne Singh¹, Michael S. Urdea² and Samanta T. Lalla-Edward^{1,*} 

¹ Ezintsha, Faculty of Health Sciences, University of the Witwatersrand, Johannesburg 2193, South Africa; mmajam@ezintsha.org (M.M.); nrhagnath@ezintsha.org (N.R.); vmsolomba@ezintsha.org (V.M.); thewritepages@gmail.com (L.S.)

² Halteres Associates, 2010 Crow Canyon Place, Suite 100, San Ramon, CA 94583, USA; murdea@halteresassociates.com

* Correspondence: slallaedward@ezintsha.org; Tel.: +27-82-6172490

Abstract: HIV self-testing (HIVST) devices are acknowledged as having the potential to enable the acceleration of HIV diagnosis and linkage to care. How efficiently professional and trained users engaged with the Asante HIV-1/2 Oral Self-Test (Asante) (Sedia Biosciences, Portland, OR, USA), and the accuracy of the device in comparison to other HIV rapid diagnostic tests (RDT), was assessed to be able to guide the development and adoption of the device in Senegal and South Africa. Using convenience sampling, potential participants were recruited from catchment areas where HIV was prevalent. Trained users performed an HIV test on participants using an Oral HIVST. The professional user's interpretation of results was then measured against the results of various other RDTs. The South African study had 1652 participants and the Senegalese, 500. Most of the participants in each study were 18–35 years old. Senegal had a higher number of females (346/500, 69.2%) compared to South Africa (699/1662, 42.1%). Asante displayed very high sensitivity and specificity when tested against other devices. In the final enzyme-linked immunosorbent assay (ELISA) comparison, in South Africa, the sensitivity: specificity was 99.1:99.9% and in Senegal, 98.4:100.0%. Senegal further identified 53/63 (84.1%) with HIV-1, 8/63 (12.7) with HIV-2 and 2/63 (3.2%) with HIV-1/2 co-infections. Professional or trained users' interpretations of Asante results correlated strongly to results when using various RDTs, the ELISA assay and Western blot tests, making it a dependable HIV testing instrument.



Citation: Majam, M.; Rhagnath, N.; Msolomba, V.; Singh, L.; Urdea, M.S.; Lalla-Edward, S.T. Usability and Clinical Performance Characteristics of the Asante HIV1/2 Test by Trained Users in Two African Sites.

Diagnostics **2021**, *11*, 1727. <https://doi.org/10.3390/diagnostics11091727>

Academic Editor: Liselotte Hardy

Received: 11 August 2021

Accepted: 8 September 2021

Published: 20 September 2021

Publisher's Note: MDPI stays neutral with regard to jurisdictional claims in published maps and institutional affiliations.



Copyright: © 2021 by the authors. Licensee MDPI, Basel, Switzerland. This article is an open access article distributed under the terms and conditions of the Creative Commons Attribution (CC BY) license (<https://creativecommons.org/licenses/by/4.0/>).

Keywords: sensitivity; specificity; HIV counselling and testing; rapid diagnostic test; point-of-care

1. Introduction

The World Health Organization's (WHO, Geneva, Switzerland) "Treat All" operation, initiated in 2015, directs that anyone who is HIV-positive is eligible for treatment without any restrictions [1]. Despite the uptake of this campaign globally, sub-Saharan Africa (SSA) still displays a substantial number of HIV infections and AIDS-related deaths [2]. The WHO's 90-90-90 goal [3] within SSA has not been completely realized [4]. South Africa, while having achieved the first 90—people knowing their HIV status—has fallen short in the other two areas [5]. Senegal, however, has not reached any of the "90" targets [6]. These realities are particularly alarming, for if the issues regarding awareness of one's HIV status and linkage to care are not hastened, then it is uncertain whether countries such as South Africa and Senegal will be able to contribute positively to the WHO's aim of eradicating AIDS by 2030 [7].

Substantial progress has been made in traditional HIV-testing and counseling services (HTS) offered at clinics and through other outreach activities. However, these efforts are still falling short in attaining rapid widespread access to testing due to several weaknesses: long queuing systems, repeat counseling, insufficient innovative targeted interventions, and

inability to reach key populations, including men, adolescent girls and young women [8]. With the onset of the COVID-19 pandemic globally in early 2020, HTS efforts have been further hampered as attendance at health facilities for a range of services has declined sharply. To address these barriers to widespread and expansive rapid HIV testing, the WHO approved HIV self-testing (HIVST) as an additional approach. It also clarifies stringent compliance requirements for the production, dissemination, usability, and performance of HIVST devices, in its pre-qualification processes (WHO-PQ) [9].

Evaluations and operational research into the use of HIVST devices by lay individuals are ongoing. Such investigations not only provide information on how to improve HIVST usability as exemplified in a recent South African study [10], but also the acceptability of such devices, as shown in an SSA study [11].

The WHO-PQ Technical Specification Series (TSS) for HIVST requires that candidate products are evaluated across a range of settings and conditions varied by user type. One of these requirements is to evaluate the test performance when conducted by trained professional users. Further, where the test makes any performance claims for the detection of HIV-1 and HIV-2, recruitment sites are needed in areas where these strains dominate. Any *in vitro* diagnostic manufacturer seeking to gain approval of their HIVST device needs to comply fully with the TSS. In cases where an *in vitro* diagnostic does not comply, complete justification needs to be provided. The TSS does not measure the clinical utility of the test but focuses on performance characteristics. There are three parts of the TSS: part 1—analytical performance characteristics, which are determined under controlled laboratory conditions; part 2—performance characteristics for professional use; and part 3—performance characteristics in the intended population (i.e., untrained lay individuals) [9].

However, the efficient use of HIVST devices by professional users such as nurses and healthcare workers is also important when one considers that they find themselves responsible for conducting tests to confirm lay individuals' results, and because, at times, uncertain novice users have indicated that they would like the assistance of professionals in providing further instructions and counseling. This need was highlighted in post-test interviews with lay individuals in a study undertaken in KwaZulu Natal, South Africa [12]. In another investigation in Tanzania, which sought to develop the HIV self-testing experience, some participants indicated their willingness to undergo confirmatory tests from health professionals. This investigation further suggested that education was required in providing direction on how to use HIVST [13]. To direct the successful use of HIVST devices by not only novice users but also by trained users, Ezintsha, through the HIV Self-Testing Africa (HSTAR) program, provides support to HIV test developers by independently evaluating products and gathering relevant data for WHO-PQ submission.

One device, the Asante HIV-1/2 Oral Self-Test (Asante) (Sedia Biosciences, Portland, OR, USA), is a single-use, *in vitro* diagnostic for the detection of antibodies to HIV-1 and HIV-2 in oral fluid specimens. It is intended for use by professional health care workers or by lay individuals who have no prior training or experience in performing *in vitro* diagnostic testing. The test is a new HIV rapid point-of-care test that offers immediate test results and can reduce the burden for routine testing for negative or sero-discordant partners. Thus, it has the potential for a greater number of people to know and sustain the monitoring of their HIV status.

This project, which was undertaken in both South Africa and Senegal to comply with the part 2 requirements of the TSS, investigated how professional users engaged with the Asante device. It aimed to: (i) evaluate the performance of Asante when performed by a professional trained user against the gold standard and national testing platform, (ii) provide the manufacturer with data to be used in the development of the Asante HIVST and (iii) inform submissions for WHO-PQ to the relevant country's health authorities for approval of sale of the device.

2. Materials and Methods

2.1. Study Design

This was a controlled study to evaluate the performance of Asante. Using this kit, trained professionals collected samples from participants. The test results were interpreted by the trained user performing the test, and then by a second healthcare professional for confirmation. The results were, thereafter, compared to a professional RDT selected from the tests used by the countries' National HIV Testing algorithm and a second RDT was performed for cases which were initially interpreted as positive, culminating in a 4th generation enzyme-linked immunosorbent assay (ELISA) laboratory test. Further testing was performed if the ELISA test and HIVST were discordant. Study participants who were deemed confirmed positives for HIV were referred for clinical treatment and care.

2.2. Product

In Asante (Figure 1), English was used in South Africa and French in Senegal. Asante is a manual point-of-care, visually read immunoassay for the qualitative detection of antibodies to HIV-1 and HIV-2 in human oral fluid. Results can be obtained in approximately 20 min. The boxed kit contains one of each of the following: pamphlet with instructions for use (IFU) (Appendix A: Figures A1 and A2), test box with tube-holder, pouched test strip, pre-measured sample buffer tube, test strip, oral swab, and desiccant. The test strip is composed of several materials that in combination are capable of detecting HIV antibodies when those antibodies are added to the tube of the sample buffer.



Figure 1. Asante.

2.3. Study Sites

In South Africa, the primary investigation site was that of the HSTAR program located in Hillbrow, central Johannesburg. Additional sites within the HSTAR program in Gauteng, South Africa were also used for recruitment. These chosen sites all possessed conditions and facilities that were conducive to the study and complied with all local government requirements for HIV testing and reporting. In Senegal, Institut de Recherche en Sante, de Surveillance Epidemiologique et de Formation (IRESSEF) was the primary study site supplemented by the surrounding public health centers. Here, the prevalence of HIV-2 was evaluated, since it is predominantly found in West African nations [14].

2.4. Study Participants and Recruitment

This study recruited anyone who was over the age of 18 and met the inclusion and exclusion expectations. Race, ethnicity, and sexual orientation were disregarded. Recruitment strived to include as close to a 50:50 ratio of males to females as possible.

Various methods were employed to recruit potential participants. South Africa and Senegal recruited prospective participants in a community-based drive. In South Africa, these recruits were from clinical trial sites operating in Hillbrow, and catchment areas

in the inner city of Johannesburg. Additionally, recruitment took place using the word-of-mouth approach and from HSTAR-based sites, where enrollment took place on site or participants were brought to the primary study site. In Senegal, people who were accessing health services at public health clinics in the cities of Dakar and Ziguinchor were invited to participate. In addition, both countries recruited candidates who were found to be HIV-positive (and HIV treatment naïve) from other clinical projects run at the same clinical sites.

Before enrolment, potential participants were screened against the inclusion and exclusion criteria. The inclusion criteria were that potential candidates were at least 18 years old, understood and completed the written informed consent form, could perform the testing on the assigned day/s, were willing to impart their medical history and provide samples of oral fluid or blood, and provide a further blood sample by venipuncture if required. Excluded were those who failed to meet the inclusion criteria, had already received any experimental HIV vaccine, or who were at that time on an HIV preexposure prophylaxis regimen, or taking any HIV medication for more than three months. Individuals who refused to use the biometric enrolment system or were unable to provide an identity document or any other document required for enrolment in the said system were also excluded. Furthermore, anyone who displayed any condition which in the facilitator's opinion would threaten the completion and/or integrity of the investigation—for example, the recruit having an acute illness or showing signs of intoxication—was ruled out.

Participant enrollment followed the serial process outlined in Figure 2.

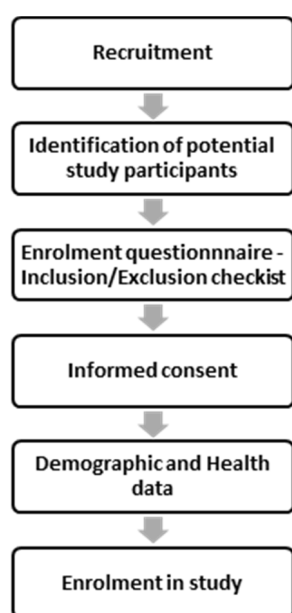


Figure 2. Recruitment and enrolment workflow.

2.5. Sample Size

As per the requirements for WHO PQ [15], recruitment continued until a minimum of 400 HIV positive participants had been detected. These 400 participants made up 24.1% of the total sample of 1662 participants. In total, 10/1662 (0.6%) were excluded on the basis of their viral load, which indicated that the participant was on an antiretroviral therapy (ART) regimen for more than 3 months, and their p24 results.

In Senegal, 500 participants were recruited, and the results of 100% of them were included in the study.

2.6. Study Procedures

Once the participant had provided written consent and had been registered, a series of testing steps followed. The participant proceeded into a private room accompanied

by the trained user (professional nurse), who performed the Asante self-test. The trained user recorded the result after the specified 20 min run time and a second trained user (professional nurse/healthcare worker), blinded to the first user's recorded result, read and documented their interpretation.

The primary nurse then performed fingerstick RDTs (RDT 1 First Response™ HIV-1/HIV-2 WB, Product code DD/138, Premier Medical Corporation Ltd., Kachigam, India; RDT 2 ADVANCED QUALITY™ Rapid HIV Test, Product code ITP02002-TC40, InTec Products Inc., Xiamen, China) in accordance with the national HIV testing algorithm.

A 5 mL blood sample was drawn for laboratory gold standard HIV-1 ELISA testing, which was performed on the Abbott Architect 1000SR HIV Ag/Ab combination (Abbott, Green Oaks, IL, USA). Figure 3 further clarifies the procedure that was followed in each country.

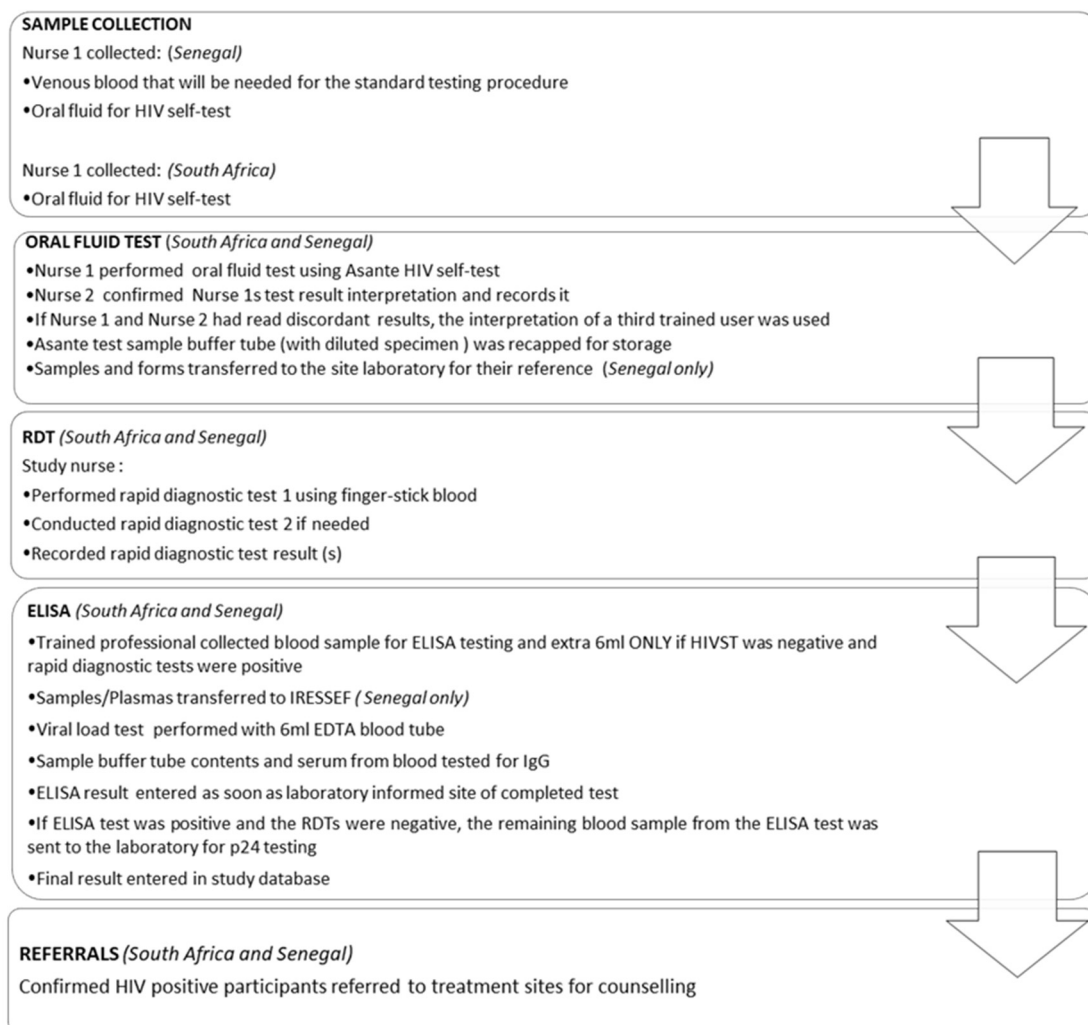


Figure 3. Study workflow.

In both South Africa and Senegal, the actual testing and confirmatory procedures were identical. However, in the Senegalese study, venous blood was drawn at the onset, while in South Africa it was drawn after the RDTs were performed, and only when required. Furthermore, in South Africa, laboratory tests were performed at appropriately certified local laboratories, and ELISA tests at a South African National Accreditation System-approved good clinical laboratory practice-compliant facility. In Senegal, both laboratory and ELISA tests were performed at the IRESSEF. Figure A3 and Table A1 contain the algorithm and test details, respectively.

2.7. Data Management

Data from questionnaires, observations, interviews, test results, and safety forms were collected on paper. Data were captured onto electronic databases within two days of collection/receipt. The project team performed daily quality checks of the data collection forms and databases. If any discrepancies were identified, these were immediately addressed.

2.8. Data Analysis

Specific critical and non-critical steps were identified from the new HIV device's IFU. Critical errors occur when a trained user commits operational errors during the assay that could potentially invalidate the results, such as not contacting the device with the gums, spilling the developer buffer, or terminating the process before completion. Non-critical errors occur when the user performs errors that deviate from the IFU but do not invalidate results, such as performing steps out of order or holding the buffer vial rather than placing it on the table. The successful completion of tasks was evaluated as a percentage of the overall process, with all critical errors identified as potential invalid tests. Failure rates (tests that fail to produce a control line with accurate use) were identified as invalid and reported as a failure rate or percentage of failed tests vs. the total number of tests used in the study.

The study endpoints for this trial were the binomial proportion and the exact 95% confidence interval of the proportion for concordance of participants' test results obtained by the trained user with the confirmatory test results.

The primary sensitivity population was expected to result from study participants who had positive HIV test results. Study participants of unknown HIV status, with a confirmed positive new HIV device test but false negative or invalid HIV test results, were excluded from the sensitivity analysis population.

The primary specificity population was expected to result from the disposition of study participants who had negative HIV test results. Study participants who had a positive HIV test (indicating the need for confirmatory testing) and a negative HIV test result which was not confirmed (by a second rapid finger prick testing) were excluded from the specificity analysis population.

Sensitivity and specificity calculations are represented in Figure 4.

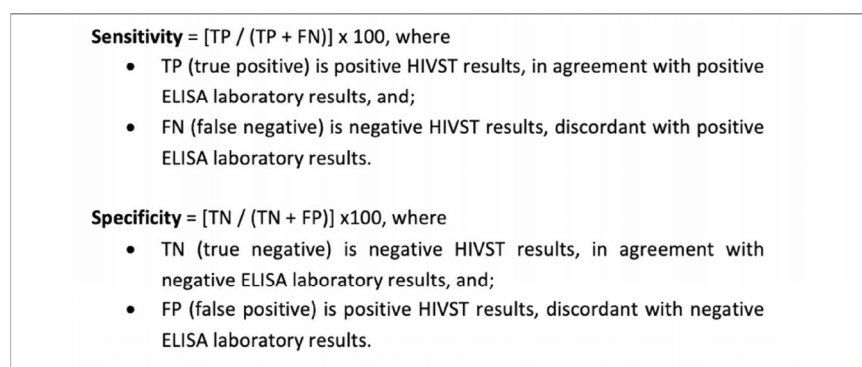


Figure 4. Sensitivity and specificity calculations [16].

3. Results

3.1. Demographics

Within the South African context, 1662 candidates were enrolled in the study. Of these, 963/1662 (57.9%) were male. Just over two-thirds of participants were between 18 and 35 years of age (1154/1662, 69.4%). While most of the participants were South African (1442/1662, 86.8%), 201/1662 (12.1%) were Zimbabwean, and just 19/1662 (1.1%) were from other nationalities.

Senegal's study sample (n = 500) was smaller than South Africa's, but unlike South Africa, Senegal had more female than male participants: 346/500 (69.2%) and 154/500

(30.8%), respectively. Just over half the participants were in the 18–35 year age bracket (292/500, 58.4%). In total, 434/500 (96.8%) participants were Senegalese, 23/500 (4.6%) Guinean and 43/500 (8.6%) from other nationalities. A comprehensive record of the demographic data can be found in Table 1.

Table 1. Study participant demographics.

Characteristic		South Africa		Senegal	
		Number (n = 1662)	%	Number (n = 500)	%
Gender	Male	963	57.9	154	30.8
	Female	699	42.1	346	69.2
Age	18–25	604	36.3	99	19.8
	26–35	550	33.1	193	38.6
	36–45	339	20.4	110	22.0
	46+	169	10.2	98	19.6
			1442	86.8	
Nationality	South Africa	201	12.1		
	Zimbabwe	19	1.1		
	Other			434	96.8
	Senegal			23	4.6
	Other			43	8.6

3.2. Discordant Results

The South African investigation revealed 17 samples with discordant results between Sedia oral self-tests and at least one of the HIV RDTs, ELISA, p24 assay and viral load tests, and in Senegal there was 1 discordant result. Ten participants were excluded from the study after the determination of their true sero-status through additional testing inclusive of viral load, p24 and/or antibody testing.

Discordant specimens from nine participants were sent to the laboratory for viral load testing. These samples all resulted in a non-detectable viral load, indicative of HIV-positive participants treated with ART being virally suppressed. The probability of ART viral suppression was indicated in the test results of an additional five participants. These subjects were coded as Asante false negatives due to the absence of any remaining plasma or serum with which to conduct additional viral load testing. The results of one sample were concordantly negative between the Asante test and RDT, but positive by 4th generation ELISA and p24 test. This sample was excluded from the study as it detected p24 antigen positivity and not HIV antibodies.

In Senegal, one subject's results showed discordance between the Asante Oral self-test and at least one of the HIV RDTs, ELISA, p24 assay and viral load tests. The result of one HIV self-test sample was interpreted as positive by the first trained user, but as "do not know/not sure" by the second reader. The first reader's interpretation was used in the sensitivity and specificity calculations.

3.3. Sensitivity and Specificity

3.3.1. Asante vs. RDT 1

In South Africa, when comparing the Asante self-test results read by Nurse 1 to RDT 1 (First Response™, Premier Medical Corporation Ltd., Kachigam, India), there were two cases of discordancy (one false negative and one false positive). No critical errors were reported. There were 400/1652 (24.2%) RDT 1 HIV-positive readings and 1252/1652 (75.8%) HIV-negative readings. The sensitivity was 99.75% and specificity 99.92%. In Senegal, the self-test comparison to RDT 1 (SD Bionline HIV-1/2, Standard Diagnostics Inc., Yongin-si, Korea) showed no discordancy. The sensitivity was 100%, as was the specificity (Table 2).

Table 2. Sensitivity and specificity of Sedia HIV-1/2 Oral self-tests vs. RDT 1, sensitivity and specificity of Sedia HIV-1/2 Oral self-tests vs. RDT 2, sensitivity and specificity of Sedia HIV-1/2 Oral self-test vs. RDT 3 (Senegal only), sensitivity and specificity of HIV-1/2 Oral self-tests vs. ELISA.

Sedia HIV-1/2 Oral Self-Tests	RDT 1							
	South Africa (n = 1652)				Senegal (n = 500)			
	Negative n (%)	Positive n (%)	Indeterminate n (%)	Total	Negative n (%)	Positive n (%)	Indeterminate n (%)	Total
Negative	1251(99.9)	1 (0.0)	0 (0.0)	1252	437 (100.0)	0 (0.0)	0 (0.0)	437
Positive	1 (0.2)	399 (99.8)	0 (0.0)	400	0 (0.0)	63 (100.0)	0 (0.0)	63
Total	1252 (75.8)	400 (24.2)	0 (0.0)	1652	437 (87.4)	63 (12.6)	0 (0.0)	500
Sensitivity	99.8%			100%				
Specificity	99.9			100%				
Sedia HIV-1/2 Oral self-tests	RDT 2							
	South Africa (n = 401)				Senegal (n = 63)			
	Negative	Positive	Indeterminate	Total	Negative	Positive	Indeterminate	Total
Negative	N/A	1 (100.0)	0 (0.0)	1	N/A	0 (0.0)	0 (0.0)	N/A
Positive	1 (0.2)	399 (99.8)	0 (0.0)	400	0 (0.0)	63 (100.0)	0 (0.0)	63
Total	1 (0.2)	400 (99.8)	0 (0.0)	401	0 (0.0)	63 (100.0)	0 (0.0)	63
Sensitivity	99.7%			100%				
Specificity	Insufficient for calculation			100%				
Sedia HIV-1/2 Oral self-test	RDT 3							
	Senegal (n = 500)							
	Negative	Positive	Indeterminate	Total	Negative	Positive	Indeterminate	Total
Negative	N/A	0 (0.0)	0 (0.0)	N/A	0 (0.0)	0 (0.0)	0 (0.0)	N/A
Positive	0 (0.0)	63 (100.0)	0 (0.0)	63	0 (0.0)	63 (100.0)	0 (0.0)	63
Total	0 (0.0)	63 (100.0)	0 (0.0)	63	0 (0.0)	63 (100.0)	0 (0.0)	63
Sensitivity	100%			100%				
Specificity	100%			100%				
Sedia HIV-1/2 Oral self-tests	ELISA confirmatory test							
	South Africa (n = 1652)				Senegal (n = 499)			
	Negative	Positive	Total	Negative	Positive	Total	Negative	Positive
Negative	1247	5	1252	436	0 (0.0)	436	0 (0.0)	63
Positive	2	398	400	0 (0.0)	63	63	0 (0.0)	63
Total	1249	403	1652	436	63	499	0 (0.0)	63
Sensitivity	98.8%			98.4%				
Specificity	99.8%			100%				

Note: Percentages calculated using row totals.

3.3.2. Asante vs. RDT 2 and RDT 3

The next confirmatory test (Advanced Quality rapid test, Intec Products Inc., Xiamen, China) was only performed on the positive cases that resulted from the HIVST and or RDT 1. The total number tested in South Africa, therefore, was 401/1652 (24.2%), of which 1/401 (0.24%) tested HIV-negative. The sensitivity was 99.7% and the specificity was undetermined. Senegal, unlike South Africa, used two additional RDTs (RDT 2, which was SD Bioline HIV-1/2, Standard Diagnostics Inc., Yongin-si, Korea, and RDT 3, which was Multisure HIV-1/2 Rapid Test, MP Biomedicals, CA, USA) against which to confirm the positive readings. Comparisons to both RDT 2 and RDT 3 indicated a 100% sensitivity and 100% specificity. (Table 2). A Western blot test was thereafter used on the HIV-positive samples and there were found to be 53 HIV-1 only, 8 HIV-2 only, and 2 HIV-1/2 co-infections.

3.3.3. Asante vs. ELISA

In performing the confirmatory test against ELISA, the entire sample in each country was used (1652 in South Africa and 500 in Senegal). South African tests showed a total of 7/1652 (0.4%) cases of discordancy (2 false positives and 5 false negatives) between the Asante self-test and 4th generation ELISA. This yielded a sensitivity of 98.8% and a specificity of 99.8%. Senegal recorded one case of discordancy (zero false positive and one false negative). When comparing the HIVST result with the laboratory-based ELISA confirmatory test, there was one case of discordancy (zero false positive and one false negative). That specimen was additionally tested using the Western blot test and was determined to be reactive to only p24. Therefore, it was excluded from the analysis of sensitivity, resulting in the total valid subjects being 499. The resultant sensitivity was 98.4% and specificity 100% (Table 2).

3.3.4. First Trained User's Reading versus Second Trained User's

This comparison of the first trained user's reading of the Asante HIVST to that of a blind reading by a second trained professional showed no discordancy in the reading, thereby yielding a sensitivity as well as a specificity of 100%. The reading was based on 1652 samples that were used at the beginning of the testing process. This comparative analysis was performed in South Africa only.

3.3.5. RDT 1 vs. ELISA

South Africa conducted another additional comparison: RDT1 vs. ELISA assay. From the sample of 1652 participants, there were a total of five cases of discordancy (one false positive and four false negatives). The sensitivity that resulted was 99.8% and specificity was 99.9%.

As determined by the Western blot test, the results identified 53/63 (84.1%) with HIV-1, 8/63 (12.7%) with HIV-2 and 2/63 (3.2%) with HIV-1/2 co-infections.

4. Discussion

This is the first report of the performance assessment of the Asante self-tests being used by a professional or trained user. Adding additional significance to the study is the fact that it was conducted in both South Africa and Senegal independently with the same protocol. The sensitivity and specificity in both the South African and Senegalese studies were extremely high. Despite differences in the study site environments, the Asante tests held up well in comparison to other RDTs that were used in the study, as well as the ELISA assay. With regards to the validity of the HIVST results, a recent South African study displayed similar findings in their assessment of a different oral HIVST [17], where sensitivity was 99.2% and specificity was 100%.

What has emerged is that Asante HIVSTs are accurate in detecting HIV when used correctly. Neither critical errors nor invalid results were reported. While the investigation did yield a few discordant results, which mostly arose from participants who were likely to already be on ART or who tested positive for the p24 antigen, when Asante was compared to other RDTs and ELISA, these were minimal in comparison to the sample.

Given that HIV has global presence and is high in Africa particularly [18], the almost 100% sensitivity and specificity results yielded by Asante bodes well for professional users who can use it to conduct reliable initial HIV test or even provide confirmation of a self-tester's interpretation of their results. These results support the use of additional training materials and client support when performing an HIVST.

The necessity for dependable data is underscored in a study that focused on the tracking and controlling of HIV in some at-risk populations in Africa. The investigation explains how data inform funding and government policies regarding HIV testing and treatment [19]. The negative impact of reporting inaccurate HIV data is further elaborated upon by Etoori [20], where poorly trained staff is pinpointed as one of the areas that needs revision in South Africa. This means that the Asante self-testing device has

value as it provides high accuracy with easy device reading and interpretation for the professional user.

Engel et al. [21] acknowledged the multitude of problems associated with testing for diseases in different circumstances, and emphasized that irrespective of the problem, the main factors contributing to post-test care are the communication between patients and the healthcare worker, as well as communication between health professionals themselves. One of the identified reasons for breakdown in communication was the frustration linked to the time it took for processes to be completed. HIVSTs can reduce the time an individual may have to wait between visiting a healthcare worker for testing and receiving further testing and counseling, as is iterated by Maheu-Giroux and Tanser [22]. In their investigation on linkage to care in community-based organizations, Shamu and Slabbert [23] further explained the additional need for HIV testing and counseling to extend beyond health facilities, to not only ease the burden of duty upon healthcare workers such as nurses, but to also to expedite HIV-related testing and counseling. A 2015 study on the uptake of HIV testing in Africa concluded that HIVST devices that were in line with the WHO normative guidance could be used as an effective supplement to traditional testing. Their research also indicates that respondents from all three countries, who were part of the study, welcomed the distribution of HIVST from health facilities beyond clinics, such as pharmacies [24]. It appears, therefore, that the Asante HIVST could well be a solution to promote the uptake of HIV testing.

There are currently limited options for pre-qualified oral fluid HIVSTs, with OraQuick® (OraSure Technologies, Bethlehem, PA, USA) [25] being the most-used test. There is a need to evaluate other candidate oral fluid HIVSTs, both for improving availability and stimulating competitive (lower) pricing. This evaluation of Asante HIVST offers data for pre-qualification, and if successful, possible introduction of another product to the HIVST market.

Limitations

This study reported on the accuracy of trained users' interpretations of results when using the Asante self-test in comparison to results of confirmatory testing. We did not note the extent to which the "trained user" was schooled in the engagement with the device—particularly in Senegal. This detail needs to be considered, as it is not guaranteed that trained users, irrespective of the level of training and context, will be able to use the device as accurately as those in this controlled study.

Furthermore, the viral load testing of some participants in the South African study could not be performed, as there was insufficient plasma serum with which to complete the test. Despite the ELISA readings for all of these being reactive, these participants' results were recorded as false negatives, as indicated in the Asante and RDT 1 tests, possibly slightly skewing the performance results.

Finally, convenience sampling was used in this study, limiting its extrapolation to other contexts.

5. Conclusions

It was established that professional/trained users' interpretations of results when using the Asante self-test in both Senegal and South Africa correlated strongly to results of the same samples when using various RDTs, the ELISA assay and a Western blot test. This suggests that the Asante HIVST is a reliable tool with which to test for HIV. It further has the potential to accelerate the rate at which HIV tests are conducted, results are verified, and linkage to care proceeds. The varied verification procedures employed in this study can also be used as a benchmark in the competence testing of similar products for not only users of the product, but also its developers and health authorities.

Author Contributions: Conceptualization, M.M. and N.R.; formal analysis, M.M. and N.R.; funding acquisition, M.M.; methodology, V.M.; writing—original draft, L.S. and S.T.L.-E.; writing—review and editing, M.M., N.R., V.M., L.S., M.S.U. and S.T.L.-E. All authors have read and agreed to the published version of the manuscript.

Funding: This research was funded by Children’s Investment Fund Foundation (CIFF) under grant number G-1906-03834.

Institutional Review Board Statement: The study was conducted according to the guidelines of the Declaration of Helsinki and approved by the Human Research Ethics Committee of the University of the Witwatersrand (ethics reference number 161110).

Informed Consent Statement: Informed consent was obtained from all subjects involved in the study.

Data Availability Statement: The data presented in this study are available on request from the corresponding author. The data are not publicly available to maintain participant confidentiality.

Acknowledgments: The authors would like to thank all the research participants.

Conflicts of Interest: All test kits for this assessment were provided by the manufacturers at no cost. The manufacturers had no role in the design of the study, in the collection, analyses, or interpretation of data or in the writing of the manuscript. The authors themselves declare no conflict of interest.

Appendix A

Asante™ HIV-1/2 Oral Self-Test

INSTRUCTIONS FOR USE

- Read instructions before using test
- Do not eat, drink or use oral care products for 1 hour before using test
- If you are on HIV therapy (ARVs) you may get a false result
- For investigational use only

CONTENTS

- Test Box (includes tube holder on front)
- Instructions for Use
- Sample Buffer Tube
- Pouched Test Strip (contains)
- Desiccant (not used)
- Test Strip
- Oral Swab

TEST PROCEDURE

- Place tube upright in tube holder in box. Twist off cap.
- Tear open blue swab packaging as shown. Remove swab, holding it by the handle.
- Press swab against your upper gum. Rub swab head back and forth across the gum.
- Flip swab over. Repeat for the bottom gum.
- Hold tube in the box and press the swab firmly against the tube opening as shown above. The swab will bend and then fit tightly in the tube.
- Gently slide swab into tube and press all the way to the bottom.
- Move swab up and down at least 2 times to mix with fluid. Then press swab against the side of the tube, remove swab and discard. Keep tube in box.
- Open test strip packaging and remove strip as shown.
- Place test strip in tube with gray label and arrow pointing down.
- Wait at least 20 minutes (but no longer than 45 minutes) for the test to run. Do not read the result after 45 minutes.
- Remove the test, place the strip next to the pictures at right and compare your results.

DRAFT REVISION

INTERPRETATION OF RESULTS

If you obtain a **NEGATIVE** result:
As with many tests, there is a chance for a false result. Be sure to use the test as instructed to reduce the chance of false results. If you have recently been involved in an HIV-risk activity, you should test again in three months.

If you obtain a **POSITIVE** result:
You should go to a clinic and obtain a follow up HIV test. Positive results from a self-test must be confirmed in a clinic.

NEGATIVE
If only the C line appears, the test result is negative. If necessary, you should test again in three months.

POSITIVE
If both lines have color, you probably have HIV. Even a faint color on the T line is a positive diagnosis. You should go to a clinic and get re-tested to confirm the result.

INVALID
If the C line does not appear, the test did not work. You should go to a clinic and get tested.

Disposal
Place used test contents in box, close and throw away in waste container.

Manufactured By:
SEDIA BIOSCIENCES CORPORATION
Portland, OR USA

EN
AUGUST 2019
LN-6212-01

Figure A1. Asante™ HIV-1/2 Oral self-test used in South Africa.

Asante™
Autodiagnostic oral du VIH-1/2

MODE D'EMPLOI

Pour usage expérimental uniquement. Les caractéristiques de performance de ce produit n'ont pas été établies.

- Lire les instructions avant d'utiliser le test.
- S'asseoir dans un endroit propre et bien éclairé, et s'assurer d'avoir la totalité du contenu avant de commencer le test.
- Ne pas manger, boire ni utiliser de produits de soins bucco-dentaires au moins 1 heure avant d'utiliser le test.
- Un traitement pour le VIH (ARV) peut entraîner un faux résultat.

CONTENU

- Boîte de test (comprend un support de tube à l'avant)
- Tube tampon
- Bandelette réactive en sachet (contient)
- Déshydratant (non utilisé)
- Bandelette réactive
- Tampon oral

Fabriqué par :
SEDIA BIOSCIENCES CORPORATION
Portland, OR États-Unis

PROCÉDURE DU TEST

- 1** Placer le tube verticalement dans le porte-tube de la boîte. Dévisser le couvercle.
- 2** Déchirer l'emballage bleu du tampon comme indiqué. Retirer le tampon en tenant par la tige.
- 3** Appuyer le tampon contre la gencive supérieure. Frotter la tête du tampon sur la gencive.
- 4** Retourner le tampon. Répéter l'opération avec la gencive inférieure.
- 5** Tenir le tube dans la boîte et appuyer fermement le tampon contre l'ouverture du tube, comme indiqué ci-dessus. Le tampon se pilerá puis s'insérera étroitement dans le tube.
- 6** Faire glisser doucement le tampon dans le tube et appuyer jusqu'au fond.
- 7** Faire glisser le tampon de haut en bas au moins 2 fois pour le mélanger avec le liquide. Appuyer ensuite le tampon contre le bord du tube, le sortir et le jeter. Laisser le tube dans la boîte.
- 8** Ouvrir l'emballage de la bandelette réactive et retirer cette dernière comme indiqué.
- 9** Placer la bandelette réactive dans le tube avec l'étiquette grise et la flèche pointant vers le bas.
- 10** Attendre au moins 20 minutes (mais pas plus de 45 minutes) pour que le test s'effectue. Ne pas lire le résultat après 45 minutes.
- 11** Retirer la bandelette, la placer à côté des images à droite et comparer les résultats.

INTERPRÉTATION DES RÉSULTATS

En cas de résultat NÉGATIF :
Comme avec beaucoup de tests, il se peut que le résultat soit faux. Utiliser le test conformément aux instructions pour réduire le risque de faux résultats. En cas de participation récente à une activité à risque, effectuer à nouveau un test dans trois mois.

En cas de résultat POSITIF :
Se rendre dans une clinique et obtenir un test de suivi du VIH. Les résultats positifs d'un autodiagnostic doivent être confirmés dans une clinique.

NÉGATIF

Si seule la ligne C apparaît, le résultat du test est négatif. Au besoin, effectuer à nouveau un test dans trois mois.

POSITIF

Si les deux lignes sont colorées, vous avez probablement le VIH. Même une faible couleur sur la ligne test est un diagnostic positif. Vous devriez vous rendre dans une clinique et faire un nouveau test pour confirmer le résultat.

NON VALIDE

Si la ligne C n'apparaît pas, le test n'a pas fonctionné. Vous devriez vous rendre dans une clinique et faire un nouveau test.

Élimination

Placer le contenu de test usagé dans la boîte, la fermer et la jeter dans un conteneur à déchets.

Figure A2. Asante™ HIV-1/2 Oral self-test used in Senegal.

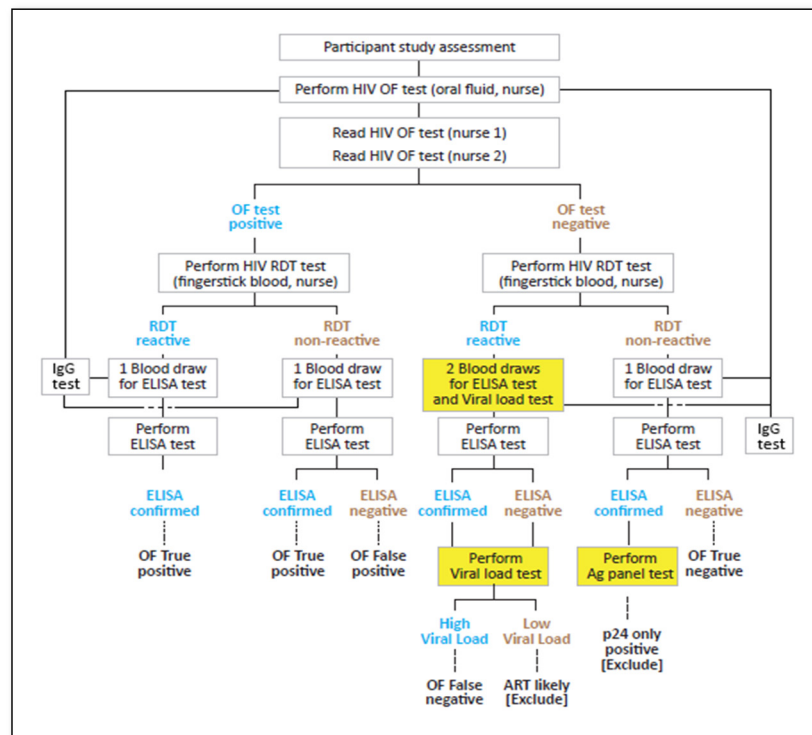


Figure A3. Testing algorithm.

Table A1. Research instrument details.

Research Instrument	South Africa	Senegal
Oral ST	Sedia Asante™ HIV-1/2 Oral self-test	Sedia Asante™ HIV-1/2 Oral self-test
RDT1	First Response™ HIV-1/HIV-2	Determine HIV-1/2
RDT2	Advanced Quality™ Rapid HIV Test	SD Bioline HIV-1/2
RDT3		Multisure HIV rapid test
ELISA	4th Generation ELISA Test	4th Generation ELISA Test
Other test		Western blot
Biometrics	Fingerprint scanner	
Paper-based	Screening questionnaire Logbooks	Screening questionnaire Logbooks

References

- World Health Organization. *Guideline on when to Start Antiretroviral Therapy and on Pre-Exposure Prophylaxis for HIV*; World Health Organization: Geneva, Switzerland, 2015.
- Yotebieng, M.; Brazier, E.; Addison, D.; Kimmel, A.D.; Cornell, M.; Keiser, O.; Parcesepe, A.M.; Onovo, A.; Lancaster, K.E.; Castelnovo, B.; et al. Research priorities to inform “Treat All” policy implementation for people living with HIV in sub-Saharan Africa: A consensus statement from the International epidemiology Databases to Evaluate AIDS (IeDEA). *J. Int. AIDS Soc.* **2019**, *22*, e25218. [[CrossRef](#)] [[PubMed](#)]
- UNAIDS. *90-90-90 An Ambitious Treatment Target to Help End the AIDS Epidemic*; UNAIDS: Geneva, Switzerland, 2014.
- UNAIDS. *UNAIDS Data 2020*; UNAIDS: Geneva, Switzerland, 2020.
- UNAIDS. *Country Fact Sheets: South Africa 2020*; UNAIDS: Geneva, Switzerland, 2020.
- UNAIDS. *Country Fact Sheets: Senegal 2020*; UNAIDS: Geneva, Switzerland, 2020.
- UNAIDS. *Fast Track: Ending the AIDS Epidemic by 2030*; UNAIDS: Geneva, Switzerland, 2014.
- Johnson, C.C.; Kennedy, C.; Fonner, V.; Siegfried, N.; Figueroa, C.; Dalal, S.; Sands, A.; Baggaley, R. Examining the effects of HIV self-testing compared to standard HIV testing services: A systematic review and meta-analysis. *J. Int. AIDS Soc.* **2017**, *20*, 21594. [[CrossRef](#)] [[PubMed](#)]
- World Health Organization. *Technical Specifications Series for Submission to WHO Prequalification—Diagnostic Assessment: Human Immunodeficiency Virus (HIV) Rapid Diagnostic Tests for Professional Use and/or Self Testing*; World Health Organization: Geneva, Switzerland, 2016.
- Majam, M.; Mazzola, L.; Rhagnath, N.; Lalla-Edward, S.T.; Mahomed, R.; Venter, W.D.F.; Fischer, A.E. Usability assessment of seven HIV self-test devices conducted with lay-users in Johannesburg, South Africa. *PLoS ONE* **2020**, *15*, e0227198. [[CrossRef](#)] [[PubMed](#)]
- Indravudh, P.P.; Choko, A.T.; Corbett, E.L. Scaling up HIV self-testing in sub-Saharan Africa: A review of technology, policy and evidence. *Curr. Opin. Infect. Dis.* **2018**, *31*, 14–24. [[CrossRef](#)] [[PubMed](#)]
- Knight, L.; Makusha, T.; Lim, J.; Peck, R.; Taegtmeier, M.; van Rooyen, H. “I think it is right”: A qualitative exploration of the acceptability and desired future use of oral swab and finger-prick HIV self-tests by lay users in KwaZulu-Natal, South Africa. *BMC Res. Notes* **2017**, *10*, 486. [[CrossRef](#)] [[PubMed](#)]
- Conserve, D.F.; Muessig, K.E.; Maboko, L.L.; Shirima, S.; Kilonzo, M.N.; Maman, S.; Kajula, L. Mate Yako Afya Yako: Formative research to develop the Tanzania HIV self-testing education and promotion (Tanzania STEP) project for men. *PLoS ONE* **2018**, *13*, e0202521. [[CrossRef](#)] [[PubMed](#)]
- Campbell-Yesufu, O.T.; Gandhi, R.T. Update on Human Immunodeficiency Virus (HIV)-2 infection. *Clin. Infect. Dis.* **2011**, *52*, 780–787. [[CrossRef](#)] [[PubMed](#)]
- World Health Organization. *Technical Specifications Series for submission to WHO Prequalification—Diagnostic Assessment: Human Immunodeficiency Virus (HIV) Rapid Diagnostic Tests for Professional Use and/or Self Testing—TSS-1*; World Health Organization: Geneva, Switzerland, 2017.
- Majam, M.; Fischer, A.E.; Rhagnath, N.; Msolomba, V.; Venter, W.D.; Mazzola, L.; Lalla-Edward, S.T. Performance assessment of four HIV self-test devices in South Africa: A cross-sectional study. *South Afr. J. Sci.* **2021**, *117*, 1–6.
- Devillé, W.; Tempelman, H. Feasibility and robustness of an oral HIV self-test in a rural community in South-Africa: An observational diagnostic study. *PLoS ONE* **2019**, *14*, e0215353. [[CrossRef](#)] [[PubMed](#)]
- UNAIDS. *Global HIV & AIDS Statistics—Fact Sheet*; UNAIDS: Geneva, Switzerland, 2021.
- Jin, H.; Restar, A.; Beyrer, C. Overview of the epidemiological conditions of HIV among key populations in Africa. *J. Int. AIDS Soc.* **2021**, *24* (Suppl. 3), e25716. [[CrossRef](#)] [[PubMed](#)]

20. Etoori, D.; Wringe, A.; Kabudula, C.W.; Renju, J.; Rice, B.; Gomez-Olive, F.X.; Reniers, G. Misreporting of patient outcomes in the South African national HIV treatment database: Consequences for programme planning, monitoring, and evaluation. *Front. Public Health* **2020**, *8*. [[CrossRef](#)] [[PubMed](#)]
21. Engel, N.; Ganesh, G.; Patil, M.; Yellappa, V.; Pant Pai, N.; Vadnais, C.; Pai, M. Barriers to point-of-care testing in India: Results from qualitative research across different settings, users and major diseases. *PLoS ONE* **2015**, *10*, e0135112. [[CrossRef](#)] [[PubMed](#)]
22. Maheu-Giroux, M.; Tanser, F.; Boily, M.C.; Pillay, D.; Joseph, S.A.; Bärnighausen, T. Determinants of time from HIV infection to linkage-to-care in rural KwaZulu-Natal, South Africa. *AIDS* **2017**, *31*, 1017–1024. [[CrossRef](#)] [[PubMed](#)]
23. Shamu, S.; Slabbert, J.; Guloba, G.; Blom, D.; Khupakonke, S.; Masihleho, N.; Kamera, J.; Johnson, S.; Farirai, T.; Nkhwashu, N. Linkage to care of HIV positive clients in a community based HIV counselling and testing programme: A success story of non-governmental organisations in a South African district. *PLoS ONE* **2019**, *14*, e0210826.
24. Van Rooyen, H.; Tulloch, O.; Mukoma, W.; Makusha, T.; Chepuka, L.; Knight, L.C.; Peck, R.B.; Lim, J.M.; Muturi, N.; Chirwa, E.; et al. What are the constraints and opportunities for HIVST scale-up in Africa? *Evidence from Kenya, Malawi and South Africa. J. Int. AIDS Soc.* **2015**, *18*, 19445. [[PubMed](#)]
25. Tonen-Wolyec, S.; Sarassoro, A.; Muwonga Masidi, J.; Twite Banza, E.; Nsiku Dikumbwa, G.; Maseke Matondo, D.M.; Kilundu, A.; Kamanga Lukusa, L.; Batina-Agasa, S.; Bélec, L. Field evaluation of capillary blood and oral-fluid HIV self-tests in the Democratic Republic of the Congo. *PLoS ONE* **2020**, *15*, e0239607. [[CrossRef](#)] [[PubMed](#)]