



Since January 2020 Elsevier has created a COVID-19 resource centre with free information in English and Mandarin on the novel coronavirus COVID-19. The COVID-19 resource centre is hosted on Elsevier Connect, the company's public news and information website.

Elsevier hereby grants permission to make all its COVID-19-related research that is available on the COVID-19 resource centre - including this research content - immediately available in PubMed Central and other publicly funded repositories, such as the WHO COVID database with rights for unrestricted research re-use and analyses in any form or by any means with acknowledgement of the original source. These permissions are granted for free by Elsevier for as long as the COVID-19 resource centre remains active.

Prevalence of Acute Pulmonary Embolism at Autopsy in Patients With COVID-19



Marco Zuin, MD^{a,*}, Matthias M. Engelen, MD^b, Claudio Bilato, MD, PhD^c, Thomas Vanassche, MD, PhD^d, Gianluca Rigatelli, MD, PhD^d, Peter Verhamme, MD, PhD^b, Christophe Vandenbrielle, MD, PhD^b, Giovanni Zuliani, MD, PhD^a, and Loris Roncon, MD^d

To date, the actual prevalence of acute pulmonary embolism (PE) in patients with SARS-CoV-2 infection remains unknown, as systematic screening for PE is cumbersome. We performed a systematic review and meta-analysis on autoptical data to estimate the prevalence of histopathologic findings of acute PE and its relevance as a cause of death on patients with COVID-19. We searched MEDLINE-PubMed and Scopus to locate all articles published in the English language, up to August 10, 2021, reporting the autoptical prevalence of acute PE and evaluating PE as the underlying cause of death in patients with COVID-19. The pooled prevalence for both outcomes was calculated using a random-effects model and presenting the related 95% confidence interval (CI). Statistical heterogeneity was measured using the Higgins I^2 statistic. We analyzed autoptical data of 749 patients with COVID-19 (mean age 63.4 years) included in 14 studies. In 10 studies, based on 526 subjects (mean age 63.8 years), a random-effect model revealed that autoptical acute PE findings were present in 27.5% of cases (95% CI 15.0 to 45.0%, I^2 89.9%). Conversely, in 429 COVID-19 subjects (mean age 64.0 years) enrolled in 9 studies, acute PE was the underlying cause of death in 19.9% of cases (95% CI 11.0 to 33.3%, I^2 83.3%). Autoptical findings of acute PE in patients with COVID-19 are present in about 30% of subjects, whereas a venous thromboembolic event represents the underlying cause of death in about 1 of 4 patients. © 2022 Elsevier Inc. All rights reserved. (Am J Cardiol 2022;171:159–164)

COVID-19 is frequently associated with venous thromboembolic events (VTEs),¹ especially in patients with severe disease admitted to the intensive care unit (ICU).² However, diagnosing VTE—especially during the initial phase of the pandemic—was difficult because of overlapping clinical respiratory findings and the limited availability of imaging. VTE prevalence and VTE as a cause of death were, therefore, possibly underestimated, as tissue analysis was also cumbersome. Indeed, during the initial phase of the outbreak, complete autopsy studies were rarely performed because of the risk of infection and biosafety.³ Unfortunately, to date, the actual autoptical prevalence of acute pulmonary embolism (PE) in patients with COVID-19 remains unknown. This study aimed to perform a systematic review and meta-analysis to estimate the autoptical prevalence of histopathologic findings of acute PE and of PE as a cause of death in patients with COVID-19 based on previously published studies.

Methods

This study followed the Preferred Reporting Items for Systematic Reviews and Meta-analyses reporting guidelines (Supplementary File 1). Data were obtained searching MEDLINE-PubMed and Scopus for all autoptical investigations, in the English language, published since inception to August 10, 2021, reporting the occurrence of acute PE as histopathologic findings and/or cause of death in patients with COVID-19.

The prevalence of acute PE in patients with COVID-19, in terms of histopathologic finding, was chosen as the primary outcome. Conversely, the presence of autoptical acute PE, considered as the underlying cause of death, was selected as the secondary outcome.

The selection of studies to be included in our analysis was independently conducted by 2 authors (GR, MZ) in a blinded fashion. Any discrepancies in study selection were resolved by consulting a third author (LR). The following Medical Subject Headings terms were used for the search: “COVID-19” AND (“Pulmonary embolism” OR “Thrombosis” OR “Venous thromboembolism”) AND “Autopsy.” Moreover, we searched the bibliographies of target studies for additional references. Case reports, review articles, abstracts, editorials/letters, and case series with <20 participants were excluded. Data extraction was independently conducted by 2 authors (MZ, GR). Studies were included in the meta-analysis if they provided (1) autoptical data on patients with confirmed COVID-19 infection and (2) prevalence of acute PE as histopathologic finding and/or as the underlying cause of death. Conversely, we excluded

^aDepartment of Translational Medicine, Section of Internal and Cardio-Respiratory Medicine, University of Ferrara, Ferrara, Italy; ^bDepartment of Cardiovascular Diseases, University Hospitals Leuven, Leuven, Belgium; ^cDepartment of Cardiology, West Vicenza Hospital, Arzignano, Italy; and ^dDepartment of Cardiology, Santa Maria della Misericordia Hospital, Rovigo, Italy. Manuscript received November 27, 2021; revised manuscript received and accepted January 26, 2022.

See page 163 for disclosure information.

*Corresponding author: Tel: +39 3398506267; fax: +39 3398506267.

E-mail addresses: marco.zuin@edu.unife.it; zuinml@yahoo.it (M. Zuin).

from the meta-analysis those studies not providing autoptic data on acute PE and those enrolling <20 patients because a small sample may have influenced the real prevalence assessment. For all studies reviewed, we extracted and analyzed the location of the study, the number of patients enrolled, the mean age and relative range, male gender, prevalence of obesity, arterial hypertension (HT), diabetes mellitus (DM), dyslipidemia, cancer and *deep vein thrombosis* (if reported). The quality of included studies was graded using the Newcastle-Ottawa quality assessment scale.⁴

The cumulative prevalence of autoptic PE findings and/or underlying cause of death (n/N), defined as the ratio between patients who died who experienced acute PE (n) and the number of patients enrolled in each study (N), were pooled using a random-effects model and presented with the corresponding 95% confidence interval (CI). Statistical heterogeneity was measured using the Higgins I² statistic.⁵ To evaluate publication bias, both Egger's test (if >10 studies were included) and funnel plots were computed. Conversely, if <10 investigations were analyzed, only the funnel plot inspection was considered. To further appraise the impact of potential baseline confounders, a meta-regression analysis using age, gender, obesity, HT, and DM as moderator variables was performed. All meta-analyses were conducted using Comprehensive Meta-Analysis software, version 3 (Biostat International, Tampa, Florida).

Results

A total of 499 articles were obtained with our search strategy. After excluding duplicates and preliminary screening, 155 full-text articles were assessed for eligibility, and 141 studies were excluded for not meeting the inclusion criteria, leaving 13 studies fulfilling the inclusion criteria (Figure 1, Supplementary File 2).⁶⁻¹⁹

Overall, autoptic data of 623 patients with COVID-19 (mean age 63.4 years) were included in the analysis. The general characteristics of the studies included are listed in Table 1. Most of the patients received a whole-body autopsy (Figure 2). At autopsy, histopathologic findings of *deep vein thrombosis* were observed in 16.6% of cases in 4 studies (mean age 56.0 years).^{7,9,14,17} The administration of anticoagulant treatment was not systematically performed in the reviewed studies. Quality assessment showed that all studies were of moderate-high quality according to the Newcastle-Ottawa quality assessment scale (Table 2).

The cumulative autopsy prevalence of acute PE in patients with COVID-19 ranged between 3.8% and 50.0% in 10 studies, enrolling 526 subjects (mean age 63.8 years).^{6,7,9,10,12-15,17,18} A random-effect model revealed a pooled prevalence of autoptic acute PE findings in 27.5% of cases (95% CI 15.0 to 45.0%, I² 89.9%) (Figure 3). Both the Egger's test (t 0.522, p = 0.61) and visual inspection of the relative funnel plot (Supplementary File 3) did not reveal significant evidence of publication bias. Meta-regression analysis showed a direct correlation with age (p = 0.001) and gender (male vs female, p = 0.02), but not with obesity (p = 0.70), HT (p = 0.33) and DM (p = 0.78) (Table 3).

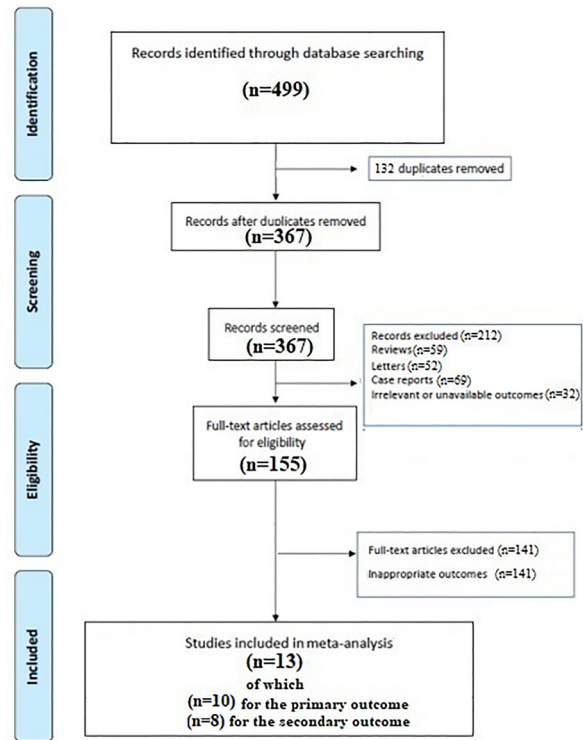


Figure 1. Flow diagram of selected studies for the meta-analysis according to the PRISMA. PRISMA = Preferred Reporting Items for Systematic Reviews and Meta-Analyses.

Autopsy findings reported that the cumulative prevalence of acute PE as an underlying cause of death in patients with COVID-19 ranged between 3.8% and 66.2% reviewing 9 studies based on 303 subjects (mean age 64.0 years).^{6-9,11,13,16,17} Using a random-effect model, the pooled prevalence of acute PE, as an underlying cause of death was 19.9% (95% CI 11.0 to 33.3%, I² 83.3%) (Figure 3). Because of the low number of the included studies (<10), Egger's test cannot be performed; however, the visual inspection of the relative funnel plot (Supplementary File 3) did not reveal significant evidence of publication bias. Meta-regression analysis showed again a direct correlation with age (p < 0.001) and gender (male vs female, p = 0.01) and HT (p < 0.001), but no effect when considering obesity (p = 0.13) and DM (p = 0.41) as moderating variables (Table 4).

Discussion

In this meta-analysis, the autoptic findings of acute PE in patients with COVID-19 were present in about 30% of subjects, whereas a VTE represented the underlying cause of death in about 1 of 4 patients. Together, these results confirmed that the prevalence of acute PE in patients with COVID-19 is high and significantly increases the risk of death because 20% of subjects died because of a VTE.

Notably, previous data on the incidence and prognostic role of acute PE in patients with SARS-CoV-2 were mainly obtained from clinical and radiologic studies, which generally underestimated the results, because in these patients computed tomography pulmonary angiography was not

Table 1
General characteristics of the population enrolled

Author	Country	Population	Age (SD) [range], years	Males	Obesity	HT	DM	Dyslipidaemia	Cancer	DVT N (%) [*]
Sang et al. ⁶	USA	50	63.5 [31-94]	36 (72 %)	25 (50 %)	45 (90 %)	28 (56 %)	16 (32 %)	NR	NR
Himwaze et al. ⁷	Zambia	29	44 [19-82]	17 (58.8 %)	NR	6 (20.7 %)	3 (10.3 %)	NR	NR	3 (10.3 %)
Yao et al. ⁸	China	26	69.8 (10.3)	13 (50 %)	9 (34.6 %)	NR	4 (15.4 %)	NR	2 (7.7 %)	NR
Mucheleng'anga et al. ⁹	Zambia	21	40 (12.3)	14 (66.2 %)	3 (14.3 %)	3 (14.3 %)	1 (4.8 %)	NR	NR	3 (14.2 %)
Dal Ferro et al. ¹⁰	Italy	40	79 (11)	22 (55 %)	NR	15 (37 %)	10 (24 %)	NR	NR	NR
Romanova et al. ¹¹	Russia	42	69 (15) [†] 72 (15) [‡]	22 (52.3 %)	17 (40.4 %)	38 (90.4 %)	11 (26.1 %)	NR	NR	NR
Bryce et al. ¹²	USA	102	68 [29-94]	NR	11 (11 %)	64 (62 %)	34 (33.3 %)	NR	7 (7 %)	NR
Elezkurtaj et al. ¹³	Germany	26	70 [30-92]	17 (65.3 %)	8 (30.7 %)	17 (65.3 %)	3 (11.5 %)	NR	1 (3.8 %)	NR
Hooper et al. ¹⁴	USA	135	61 [64-97]	81 (60 %)	46 (34 %)	87 (64 %)	71 (52 %)	NR	NR	6 (4.4 %)
Falasca et al. ¹⁵	Italy	22	67 (15.7) [§] 48.5 (13.0)	15 (68.1 %)	NR	4 (22.3 %)	4 (22.3 %)	NR	5 (27.8 %)	NR
De Michele et al. ¹⁶	USA	29	71.3 [38-93]	20 (68.9 %)	NR	23 (79.3 %)	16 (55.1 %)	10 (35.7 %)	NR	NR
Edler et al. ¹⁷	Germany	80	79.2 [52-96]	46 (58 %)	17 (21.2 %)	15 (18.7 %)	17 (21.2 %)	NR	13 (16.2 %)	32 (40.0 %)
Menter et al. ¹⁸	Switzerland	21	76 [53-96]	17 (80.9 %)	6 (28.5 %)	21 (100 %)	7 (35.0 %)	NR	3 (14.2 %)	NR

HT = arterial hypertension; DM = diabetes mellitus. DVT: Deep Vein thrombosis.

* Autoptic finding.

[†] Referred to group 1.

[‡] Referred to group 2.

[§] With comorbidities.

^{||} Without comorbidities.

systematically performed during the infection but only in case of clinical deterioration or worsening of symptoms.¹ Previous results on autopsy prevalence of acute PE in patients with COVID-19 were based on isolated case reports and small case series, often including <10 of 15 patients, limiting the accuracy of the results.^{19,20} Moreover, the reasons for performing autopsies were not systematically reported in the original investigations reviewed, so we cannot exclude that autoptic investigations have mainly been performed on these patients with unknown cause of death, potentially distorting our results. Unfortunately, information related to the severity of acute PE at the time

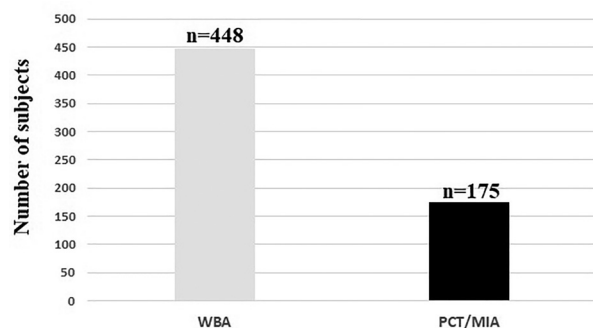


Figure 2. Number of patients receiving a WBA or a PCT/MIA. PCT/MIA = percutaneous/minimally invasive autopsy; WBA = whole-body autopsy.

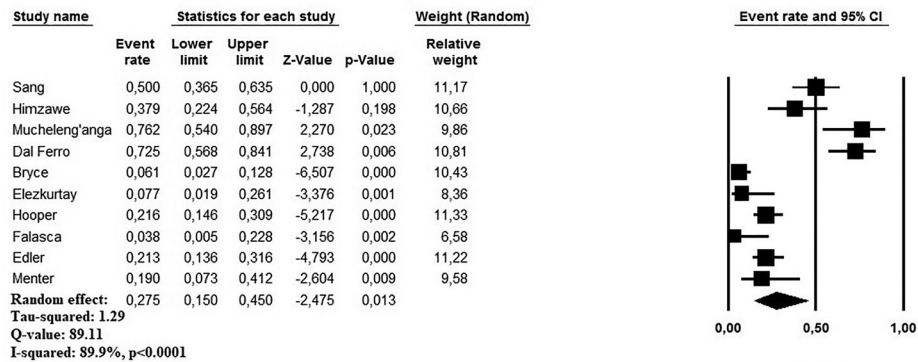
of diagnosis was not systematically assessed by original investigations and the clinical scenario (i.e., general ward or ICU) in which the thromboembolic events were diagnosed. These missing data limit the possibility drawing definitive conclusions regarding the real prognostic impact of acute PE on the prognosis of patients with SARS-CoV-2. However, it cannot be neglected to mention that few autopsies were performed during the first part of the pandemic, especially for the risk of viral infection.^{3,21} Therefore, our analysis of autoptic data obtained from mid to large cohorts is likely to have overcome these limitations, also evidencing the proportion of cases in which the thromboembolic event may be retained as the underlying cause of death. The higher prevalence of acute PE obtained in our study compared with that obtained by in-vivo clinical investigations confirmed that the diagnosis of acute PE remains largely underestimated in patients with COVID-19.²²⁻²⁴ Despite it being reported that the prevalence of acute PE increases with the use of systematic screening based on computed tomography pulmonary angiography,²⁵ this approach cannot be recommended in routine clinical practice. Indeed, it is often not feasible to conduct the imaging studies needed to diagnose VTE in these subjects who are infective, critically ill, intubated, unstable, and often in a prone position.

Our analysis found a marked heterogeneity between studies submitted to meta-regression analysis. In this regard, some of the sources of heterogeneity were

Table 2
Quality of the included studies assessed using the Newcastle-Ottawa quality assessment scale (NOS)

Study	NOS			
	Selection	Comparability	Outcome	Total score
Sang et al. [10]	★ ★ ★	★ ★	★ ★ ★	8
Himzawe et al. [11]	★ ★ ★	★ ★	★ ★ ★	8
Yao et al. [12]	★ ★ ★	★ ★	★ ★ ★	8
Mucheleng'anga et al. [13]	★ ★ ★	★ ★	★ ★ ★	8
Dal Ferro et al. [14]	★ ★ ★	★ ★	★ ★	7
Romanova et al. [15]	★ ★ ★	★ ★	★ ★	7
Bryce et al. [16]	★ ★ ★	★ ★	★ ★	7
Elezkurtaj et al. [17]	★ ★ ★	★ ★	★ ★ ★	8
Hooper et al. [18]	★ ★ ★	★ ★	★ ★ ★	8
Falasca et al. [19]	★ ★ ★	★ ★	★ ★ ★	8
De Michele et al. [20]	★ ★ ★	★ ★	★ ★ ★	8
Edler et al. [21]	★ ★ ★	★ ★	★ ★ ★	8
Menter et al. [22]	★ ★ ★	★ ★	★ ★ ★	8
Tritschler et al. [23]	★ ★ ★	★ ★	★ ★ ★	8

A



B

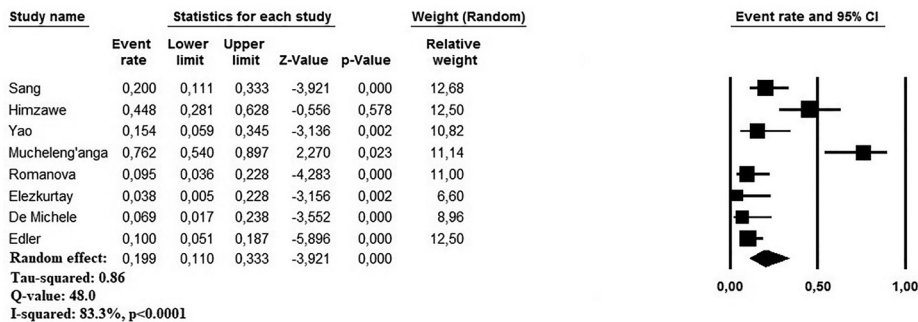


Figure 3. (A) Forest plots investigating the pooled prevalence of autoptic histopathologic findings of acute pulmonary embolism in patients with COVID-19. (B) Forest plots investigating acute pulmonary embolism as underlying cause of death at autopsy in patients with COVID-19.

Table 3

Meta-regression analysis of the effects of presenting features on the prevalence of histopathologic findings of acute pulmonary embolism

Moderator	N° of interactions	β	95% CI	p
Age (years)	10	0.021	-0.101 to 0.011	0.001
Males, %	9	0.005	-0.003 to 0.004	0.02
Obesity, %	6	0.011	-0.072 to 0.048	0.70
HT, %	6	-0.019	-0.057 to 0.019	0.33
DM, %	5	-0.006	-0.056 to 0.038	0.78

HT = arterial hypertension; DM = diabetes mellitus.

represented by age and gender in both outcomes. Indeed, these items represent a major risk factor of developing VTE in the general population and patients with COVID-19^{26,27} and independent predictors of mortality²⁸ in such subjects. However, it is also true that our results might reflect the prevalence of acute PE in patients with a more severe infection, more relevant comorbidities, or even fewer chances to intensive care treatments, as suggested by age. Moreover, because no studies were performed during the second or third pandemic wave, we cannot evaluate the trend of the autoptic prevalence of acute PE over time and the indirect effect of COVID-19 vaccines, especially in older subjects. We cannot exclude that sampling bias by the competing risk of death may also have led to the underestimation of the real cumulative incidence of thromboembolic events.

We have been unable to assess the impact of ICU hospitalization and the anticoagulant treatment administered, if any because these data were not systematically reported in the reviewed studies. In this regard, further studies are needed to investigate these aspects from an autoptic perspective in patients with COVID-19. Although the enrollment period was not systematically reported by the revised investigations, it clearly emerges how the studies considered was generally performed during the first pandemic wave when the anticoagulants treatments were not largely used. Because of the absence of more recent analyses, when anticoagulants become a cornerstone in the treatment of patients with COVID-19, we cannot compare the autoptic pooled prevalence of acute PE between the 2 periods and therefore assess the indirect effects of anticoagulant treatments in such patients.

As the optimal regimen to prevent VTE in COVID-19 is still largely unknown, this meta-analysis underlines the potential of underdiagnosing VTE; important in designing, performing, and analyzing randomized trials on anticoagulant therapy in patients with COVID-19. Furthermore, our study reinforces the concept that the accurate identification of the unfavorable prognostic factors, as acute PE, is essential in helping clinicians and policymakers tailor the management strategies for patients with COVID-19.

Our study has several limitations related to the observational nature of the reviewed studies with all their inherited biases. In particular, potential underestimation could derive from not systematically searching for PE at autopsy. Similarly, we cannot assess if adequate prophylactic anticoagulation was consistently administered in each study because these data were not systematically provided in the review investigations. Furthermore, few autoptic investigations on the COVID-19 infection have analyzed the prevalence of

Table 4

Meta-regression analysis of the effects of presenting features on the autoptic prevalence of acute pulmonary embolism as an underlying cause of death in patients with COVID-19

Moderator	N° of interactions	β	95% CI	p
Age (years)	9	0.076	-0.105 to 0.047	<0.0001
Males, %	9	0.002	-0.001 to 0.006	0.01
Obesity, %	7	-0.050	-0.115 to 0.015	0.13
HT, %	5	0.035	-0.059 to 0.012	0.22
DM, %	5	0.027	-0.095 to 0.039	0.41

HT = arterial hypertension; DM = diabetes mellitus.

acute PE as a complication of COVID-19 infection or as the underlying cause of death, limiting the number of the studies included in the meta-analysis and the resulting number of patients. Moreover, considering that most of the autopsies reviewed were legally mandated, our data could be partially distorted because the enrollment of these patients might have determined an involuntary selection bias. Despite these limitations, to the best of our knowledge, this study is the first systematic review and meta-analysis providing a clear estimation on the prevalence of acute PE as both a complication and underlying cause of death in patients with COVID-19.

In conclusion, based on this systematic review and meta-analysis, the prevalence of acute PE in autopsy studies appears higher compared with clinical practice, hinting at an underestimation of acute PE in patients with COVID-19 in clinical practice.

Disclosures

The authors have no conflicts of interest to declare.

Funding

None.

Supplementary materials

Supplementary material associated with this article can be found in the online version at <https://doi.org/10.1016/j.amjcard.2022.01.051>.

- Roncon L, Zuin M, Barco S, Valerio L, Zuliani G, Zonzin P, Konstantinides SV. Incidence of acute pulmonary embolism in COVID-19 patients: systematic review and meta-analysis. *Eur J Intern Med* 2020;82:29–37.
- Klok FA, Kruij MJHA, van der Meer NJM, Arbous MS, Gommers D, Kant KM, Kaptein FHJ, van Paassen J, Stals MAM, Huisman MV, Endeman H. Confirmation of the high cumulative incidence of thrombotic complications in critically ill ICU patients with COVID-19: an updated analysis. *Thromb Res* 2020;191:148–150.
- Wichmann D, Sperhake JP, Lütgehetmann M, Steurer S, Edler C, Heinemann A, Heinrich F, Mushumba H, Kniep I, Schröder AS, Burdelski C, de Heer G, Nierhaus A, Frings D, Pfeifferle S, Becker H, Bredereke-Wiedling H, de Weerth A, Paschen HR, Sheikhzadeh-Eggers S, Stang A, Schmiedel S, Bokemeyer C, Addo MM, Aepfelbacher M, Püschel K, Kluge S. Autopsy findings and venous thromboembolism in patients with COVID-19: A prospective cohort study. *Ann Intern Med* 2020;173:268–277.
- Wells GA, Shea B, O'Connell D, Peterson J, Welch V, Losos M, Tugwell P. The Newcastle-Ottawa Scale (NOS) for assessing the quality of

- nonrandomized studies in meta-analyses. The Ottawa Hospital. Available at: http://www.ohri.ca/programs/clinical_epidemiology/oxford.asp Accessed on August 5, 2021.
5. Higgins JP, Thompson SG, Deeks JJ, Altman DG. Measuring inconsistency in meta-analyses. *BMJ* 2003;327:557–560.
 6. Sang CJ 3rd, Burkett A, Heindl B, Litovsky SH, Prabhu SD, Benson PV, Rajapreyar I. Cardiac pathology in COVID-19: a single center autopsy experience. *Cardiovasc Pathol* 2021;54:107370.
 7. Himwaze CM, Telendiy V, Maate F, Mupeta S, Chitalu C, Chanda D, Julius P, Mumba C, Marimo C, Hamukale A, Mulenga L, Shibemba AL, Zumla A, Mucheleng'anga LA. Post-mortem examination of hospital inpatient COVID-19 deaths in Lusaka, Zambia - a descriptive whole-body autopsy series. *Int J Infect Dis* 2021;108:363–369.
 8. Yao XH, Luo T, Shi Y, He ZC, Tang R, Zhang PP, Cai J, Zhou XD, Jiang DP, Fei XC, Huang XQ, Zhao L, Zhang H, Wu HB, Ren Y, Liu ZH, Zhang HR, Chen C, Fu WJ, Li H, Xia XY, Chen R, Wang Y, Liu XD, Yin CL, Yan ZX, Wang J, Jing R, Li TS, Li WQ, Wang CF, Ding YQ, Mao Q, Zhang DY, Zhang SY, Ping YF, Bian XW. A cohort autopsy study defines COVID-19 systemic pathogenesis. *Cell Res* 2021;31:836–846.
 9. Mucheleng'anga LA, Telendiy V, Hamukale A, Shibemba AL, Zumla A, Himwaze CM. COVID-19 and sudden unexpected community deaths in Lusaka, Zambia, Africa - a medico-legal whole-body autopsy case series. *Int J Infect Dis* 2021;109:160–167.
 10. Dal Ferro M, Bussani R, Paldino A, Nuzzi V, Collesi C, Zentilin L, Schneider E, Correa R, Silvestri F, Zacchigna S, Giacca M, Metra M, Merlo M, Sinagra G. SARS-CoV-2, myocardial injury and inflammation: insights from a large clinical and autopsy study [published correction appears in *Clin Res Cardiol* 2021;110:1694] *Clin Res Cardiol* 2021;110(11):1822–1831.
 11. Romanova ES, Vasilyev VV, Startseva G, Karev V, Rybakova MG, Platonov PG. Cause of death based on systematic post-mortem studies in patients with positive SARS-CoV-2 tissue PCR during the COVID-19 pandemic. *J Intern Med* 2021;290:655–665.
 12. Bryce C, Grimes Z, Pujadas E, Ahuja S, Beasley MB, Albrecht R, Hernandez T, Stock A, Zhao Z, AlRasheed MR, Chen J, Li L, Wang D, Corben A, Haines GK 3rd, Westra WH, Umphlett M, Gordon RE, Reidy J, Petersen B, Salem F, Fiel MI, El Jamal SM, Tsankova NM, Houldsworth J, Mussa Z, Veremis B, Sordillo E, Gitman MR, Nowak M, Brody R, Harpaz N, Merad M, Gnjatich S, Liu WC, Schotsaert M, Miorin L, Aydllo Gomez TA, Ramos-Lopez I, Garcia-Sastre A, Donnelly R, Seigler P, Keys C, Cameron J, Moultrie I, Washington KL, Treatman J, Sebra R, Jhang J, Firpo A, Lednický J, Paniz-Mondolfi A, Cordon-Cardo C, Fowkes ME. Pathophysiology of SARS-CoV-2: the Mount Sinai COVID-19 autopsy experience. *Mod Pathol* 2021;34:1456–1467.
 13. Elez Kurtaj S, Greuel S, Ihlow J, Michaelis EG, Bischoff P, Kunze CA, Sinn BV, Gerhold M, Hauptmann K, Ingold-Heppner B, Miller F, Herbst H, Corman VM, Martin H, Radbruch H, Heppner FL, Horst D. Causes of death and comorbidities in hospitalized patients with COVID-19. *Sci Rep* 2021;11:4263.
 14. Hooper JE, Padera RF, Dolhnikoff M, da Silva LFF, Duarte-Neto AN, Kapp ME, Lacy JM, Mauad T, Saldiva PHN, Rapkiewicz AV, Wolf DA, Felix JC, Benson P, Shanes E, Gawelek KL, Marshall DA, McDonald MM, Muller W, Priemer DS, Solomon IH, Zak T, Bhattacharjee MB, Fu L, Gilbert AR, Harper HL, Litovsky S, Lomasney J, Mount SL, Reilly S, Sekulic M, Steffensen TS, Threlkeld KJ, Zhao B, Williamson AK. A postmortem portrait of the coronavirus disease 2019 (COVID-19) pandemic: a large multi-institutional autopsy survey study. *Arch Pathol Lab Med* 2021;145:529–535.
 15. Falasca L, Nardacci R, Colombo D, Lalle E, Di Caro A, Nicastrì E, Antinori A, Petrosillo N, Marchioni L, Biava G, D'Offizi G, Palmieri F, Goletti D, Zumla A, Ippolito G, Piacentini M, Del Nonno F. Post-mortem findings in Italian patients with COVID-19: a descriptive full autopsy study of cases with and without comorbidities. *J Infect Dis* 2020;222:1807–1815.
 16. De Michele S, Sun Y, Yilmaz MM, Katsyov I, Salvatore M, Dzierba AL, Marboe CC, Brodie D, Patel NM, Garcia CK, Saqi A. Forty post-mortem examinations in COVID-19 patients. *Am J Clin Pathol* 2020;154:748–760.
 17. Edler C, Schröder AS, Aepfelbacher M, Fitzek A, Heinemann A, Heinrich F, Klein A, Langenwalder F, Lütgehetmann M, Meißner K, Püschel K, Schädler J, Steurer S, Mushumba H, Sperhake JP. Dying with SARS-CoV-2 infection: an autopsy study of the first consecutive 80 cases in Hamburg, Germany. *Int J Legal Med* 2020;134:1275–1284.
 18. Menter T, Haslbauer JD, Nienhold R, Savic S, Hopfer H, Deigendesch N, Frank S, Turek D, Willi N, Pargger H, Bassetti S, Leuppi JD, Cathomas G, Tolnay M, Mertz KD, Tzankov A. Postmortem examination of COVID-19 patients reveals diffuse alveolar damage with severe capillary congestion and variegated findings in lungs and other organs suggesting vascular dysfunction. *Histopathology* 2020;77:198–209.
 19. Satturwar S, Fowkes M, Farver C, Wilson AM, Eccher A, Girolami I, Pujadas E, Bryce C, Salem F, El Jamal SM, Paniz-Mondolfi A, Petersen B, Gordon RE, Reidy J, Frassetta F, Marshall DA, Pantanowitz L. Postmortem findings associated with SARS-CoV-2: systematic review and meta-analysis. *Am J Surg Pathol* 2021;45:587–603.
 20. Vazquez-Bonilla WO, Orozco R, Argueta V, Sierra M, Zambrano LI, Muñoz-Lara F, López-Molina DS, Arteaga-Livias K, Grimes Z, Bryce C, Paniz-Mondolfi A, Rodríguez-Morales AJ. A review of the main histopathological findings in coronavirus disease 2019. *Hum Pathol* 2020;105:74–83.
 21. Salerno M, Sessa F, Piscopo A, Montana A, Torrisi M, Patanè F, Murabito P, Volti GL, Pomara C. No autopsies on COVID-19 deaths: a missed opportunity and the lockdown of science. *J Clin Med* 2020;9:1472.
 22. Bompard F, Monnier H, Saab I, Tordjman M, Abdoul H, Fournier L, Sanchez O, Lorut C, Chassagnon G, Revel MP. Pulmonary embolism in patients with COVID-19 pneumonia. *Eur Respir J* 2020;56:2001365.
 23. Lodigiani C, Iapichino G, Carenzo L, Cecconi M, Ferrazzi P, Sebastian T, Kucher N, Studt JD, Sacco C, Bertuzzi A, Sandri MT, Barco S, Humanitas COVID-19 Task Force. Venous and arterial thromboembolic complications in COVID-19 patients admitted to an academic hospital in Milan, Italy. *Thromb Res* 2020;191:9–14.
 24. Middeldorp S, Coppens M, van Haaps TF, Foppen M, Vlaar AP, Müller MCA, Bouman CCS, Beenen LFM, Kootte RS, Heijmans J, Smits LP, Bonta PI, van Es N. Incidence of venous thromboembolism in hospitalized patients with COVID-19. *J Thromb Haemost* 2020;18:1995–2002.
 25. Nopp S, Moik F, Jilma B, Pabinger I, Ay C. Risk of venous thromboembolism in patients with COVID-19: a systematic review and meta-analysis. *Res Pract Thromb Haemost* 2020;4:1178–1191.
 26. Eischer L, Eichinger S, Kyrle PA. Age at first venous thromboembolism and risk of recurrence: a prospective cohort study. *Medicine (Baltimore)* 2009;88:366–370.
 27. Henrina J, Santosa Putra IC, Cahyadi I, Lawrensia S, Hadi Gunawan HF, Cahyadi A, Franke J, Suciadi LP. Clinical characteristics and outcomes of venous thromboembolism in patients hospitalized for COVID-19: systematic review and meta-analysis. *Thrombosis Update* 2021;2:100037.
 28. Gómez CA, Sun CK, Tsai IT, Chang YP, Lin MC, Hung IY, Chang YJ, Wang LK, Lin YT, Hung KC. Mortality and risk factors associated with pulmonary embolism in coronavirus disease 2019 patients: a systematic review and meta-analysis. *Sci Rep* 2021;11:16025.