

# Spatial and spatio-temporal statistical analyses of retinal images: a review of methods and applications

Wenyue Zhu ,<sup>1</sup> Ruwanthi Kolamunnage-Dona ,<sup>2</sup> Yalin Zheng ,<sup>1,3</sup> Simon Harding ,<sup>1,3</sup> Gabriela Czanner ,<sup>1,3,4</sup>

**To cite:** Zhu W, Kolamunnage-Dona R, Zheng Y, *et al*. Spatial and spatio-temporal statistical analyses of retinal images: a review of methods and applications. *BMJ Open Ophthalmology* 2020;**5**:e000479. doi:10.1136/bmjophth-2020-000479

► Additional material is published online only. To view please visit the journal online (<http://dx.doi.org/10.1136/bmjophth-2020-000479>).

Received 21 March 2020  
Revised 26 April 2020  
Accepted 28 April 2020



© Author(s) (or their employer(s)) 2020. Re-use permitted under CC BY-NC. No commercial re-use. See rights and permissions. Published by BMJ.

<sup>1</sup>Department of Eye and Vision Science, Institute of Life Course and Medical Sciences, University of Liverpool, a member of Liverpool Health Partners, Liverpool, UK

<sup>2</sup>Department of Health Data Science, Institute of Population Health Sciences, University of Liverpool, a member of Liverpool Health Partners, Liverpool, UK

<sup>3</sup>St Paul's Eye Unit, Liverpool University Hospitals Foundation Trust, a member of Liverpool Health Partners, Liverpool, UK

<sup>4</sup>Department of Applied Mathematics, Liverpool John Moores University, Liverpool, UK

## Correspondence to

Wenyue Zhu; Wenyue.Zhu@liverpool.ac.uk

## ABSTRACT

**Background** Clinical research and management of retinal diseases greatly depend on the interpretation of retinal images and often longitudinally collected images. Retinal images provide context for spatial data, namely the location of specific pathologies within the retina. Longitudinally collected images can show how clinical events at one point can affect the retina over time. In this review, we aimed to assess statistical approaches to spatial and spatio-temporal data in retinal images. We also review the spatio-temporal modelling approaches used in other medical image types.

**Methods** We conducted a comprehensive literature review of both spatial or spatio-temporal approaches and non-spatial approaches to the statistical analysis of retinal images. The key methodological and clinical characteristics of published papers were extracted. We also investigated whether clinical variables and spatial correlation were accounted for in the analysis.

**Results** Thirty-four papers that included retinal imaging data were identified for full-text information extraction. Only 11 (32.4%) papers used spatial or spatio-temporal statistical methods to analyse images, others (23 papers, 67.6%) used non-spatial methods. Twenty-eight (82.4%) papers reported images collected cross-sectionally, while 6 (17.6%) papers reported analyses on images collected longitudinally. In imaging areas outside of ophthalmology, 19 papers were identified with spatio-temporal analysis, and multiple statistical methods were recorded.

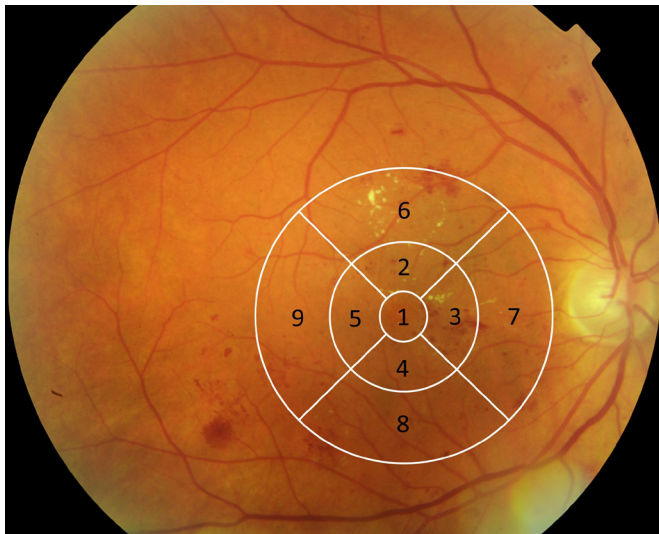
**Conclusions** In future statistical analyses of retinal images, it will be beneficial to clearly define and report the spatial distributions studied, report the spatial correlations, combine imaging data with clinical variables into analysis if available, and clearly state the software or packages used.

## BACKGROUND

Retinal imaging is routinely used in clinics utilising a wide range of modalities, such as scanning laser ophthalmoscopy, fundus imaging, fluorescein angiography (FA) and optical coherence tomography (OCT), which enables us to better understand retinal physiology and to detect various abnormalities. Additionally, there is a wide variation of magnification, field of view, pixel density and heterogeneity across the images, while each

methodology can be subject to various types of artefacts. In general, each image is a collection of thousands (or millions) of pixel data. The imaging data contain the spatial layout of the pixels and the intensity value of each pixel point. An example is the retinal FA images acquired for a study of the death or survival of children with malaria. Researchers were interested in how the location and the amount of capillary non-perfusion (CNP) relates to the survival outcome of the patients.<sup>1</sup> The FA images can then be processed using an image segmentation method to tell whether a pixel point is a part of the CNP lesion or not. The processed image can be considered as a map of ones and zeros; hence for each retina, the imaging data are a spatially organised collection of thousands (or millions) of binary values. Such a map of zeros and ones can be seen as a realisation of a spatial point process (also called point patterns spatial statistics).<sup>2</sup>

Apart from pixel representations, the retinal images may be divided into smaller numbers of sectors to facilitate the manual annotation (ie, manual assessment of image). A useful set of sectors is created, for example, by the ETDRS grid ([figure 1](#)),<sup>3</sup> designed for manually grading the macula, the centre of the retina. The grid consists of nine sectors or subfields, centred on the centre of the macula, providing a central subfield, and inner and outer rings with radii of 500, 1500 and 3000 μm, with the rings segmented into four quadrants (superior, inferior, nasal, temporal subfields). This grid has been implemented in most image platforms, and one of these is OCT imaging, which gives a cross-sectional view of the retina and provides retinal thickness measurements in each quadrant of the grid for each layer of the retina. In the spatial statistical community, the idea of dividing an image into non-overlapping sectors is, however, not new, it has been looked into thoroughly, and such sectors are called 'lattices'.<sup>2</sup>



**Figure 1** Colour fundus photograph with ETDRS grid (white lines) centred on the centre of the macula. In this photograph, sector 1 is the central subfield, sectors 2–5 are inner subfields, 6–9 are outer subfields; sectors 2, 6 are superior direction, sectors 3, 7 are nasal direction, sector 4, 8 are inferior direction and sectors 5, 9 are temporal direction.

Retinal images are often acquired repeatedly over time during follow-up visits, thus giving rise to spatio-temporal data, which is a complex data structure for analysis. These repeatedly collected retinal images can give valuable insight into studying disease aetiology, monitoring of diseases and early diagnosis, and response to treatment. With the recent improvement of the imaging technologies, it is now highly topical to assess systematically the right ways to analyse these complex spatial and spatio-temporal data. There are practically two quantitative approaches: manual quantitative (eg, manually quantify the extent of damage on image) and automated quantitative (eg, automatic quantification using a computer algorithm) assessment.

A manual quantitative evaluation of the retinal images can be done by clinicians or trained graders. Manual evaluation can be beneficial; however, it is often expensive, subjective and practically impossible to do on a fine spatial scale. Furthermore, it possesses an enormous task for humans to evaluate the change in images over time manually.

An automated quantitative evaluation of the retinal images can be done either via a spatial or non-spatial statistical evaluation. In this study, we note that a spatial evaluation is defined as a method that acknowledges the spatial location of features and their possible correlations between the locations (ie, the spatial correlations). By contrast, a non-spatial statistical evaluation focuses on one or multiple locations of features but does not consider their potential correlations. Another clinical example is diabetic macular oedema (DMO), a condition seen in diabetes when leaky vessels cause fluid to accumulate in the macula, and where researchers are interested in acquiring the retinal thickness using OCT to relate to

different stages of DMO. Retinal imaging data not only contain thickness values but also the locations of those thicknesses relative to various landmarks, such as the foveal centre and the optic disc. However, to date most researchers have only investigated the changes in the central subfield mean thickness and ignored the retinal thickness measurements in other subfields.<sup>4</sup> This may lead to bias or inaccuracy in the diagnosis due to ignoring the spatial context. Also, in real-world practice, one criterion for patients with DMO to be treated with intraocular injections is the increased thickness measurement of the central subfield rather than the complete profile of the retinal thickness. This simplifies the decision-making process, but it is not clear how and if the process is affected by ignoring the data from other parts of the image. The main challenge of such automated quantitative spatial statistical evaluation lies in the fact that each image contains thousands (or millions) of pixels; hence it is highly dimensional. Such dimensionality prohibits the use of maximum likelihood unless some assumptions are made about the studied features (eg, basis functions or lattices). Several statistical approaches have been recently proposed and used for the retinal images.<sup>1 5 6</sup> However, there is no review of the approaches, and there is a lack of understanding of the advantages of different approaches.

Outside of retinal imaging, there is extensive literature on the statistical analysis of medical images, which provides an invaluable insight into the advantages of careful spatial analysis. The spatial and spatial-temporal modelling has been applied in the analysis of cardiac images and functional MRI (fMRI) brain images.<sup>7 8</sup> Its advantage is that it captures the temporal covariance structure across spatial locations, and in doing so, it can increase the precision of parameter estimates. Moreover, an ideal fMRI statistical analysis should incorporate a proper characterisation of the spatial and temporal properties of physiological activities.<sup>9</sup>

In this review, our primary aim was to investigate what data analytic approaches are used to analyse retinal imaging data: in both association (epidemiological) and diagnostic (prognostic, predictive, screening) studies. Specifically, we aimed to see if the spatial correlation is estimated, reported and incorporated (adjusted) in the analysis. Our secondary aim was to create a comprehensive list of all relevant spatio-temporal statistical modelling frameworks applied to other medical specialties in the current literature.

## METHODS

We used Scopus, MEDLINE (Ovid) and Web of Science to search for relevant papers. Search strategies are presented in online supplementary file 1.

## Eligibility criteria

We included articles if

1. Spatial/spatio-temporal information is available in their studies, or the article used spatial/spatio-temporal ophthalmic imaging data.

2. The article used statistical analysis methods for human retinal imaging data.
3. Full text is available online.

We excluded articles if the article

1. Interested purely in image processing such as image registration or image segmentation.
2. Focussed purely on machine-learning methods.
3. Conducted cell-level image analyses.
4. Aimed to do analyses on non-human retinal data.

Both spatial and non-spatial approaches to the analysis are included in this review. The original titles, abstracts and keywords were identified, and then irrelevant papers were excluded. If the study relevancy was unclear from the title and abstract, the full text was viewed to decide whether to include the study or not. We note that in this study, machine learning is defined as a model that learns and improves automatically through the given data.<sup>10</sup>

#### Data extraction: primary information extracted from papers

The most crucial information that we extracted from papers was on the type of statistical approach used. There are two types of statistical approaches and hence two groups of papers:

1. Papers that use a spatial or spatio-temporal statistical approach.
2. Papers that use a non-spatial statistical approach.

#### Data extraction: the list of all information

The data extraction form to obtain all necessary information can be found in online supplementary file 2. Spatial data refer to having more than one single measurement on the retinal space. Papers stating the analyses of the direction, namely spatial, inferior, temporal and superior, or ring (eg, central subfield, inner ring and outer ring) effect, are all selected in the review as analyses of spatial content. If the paper involves models analysing a spatial data recorded at more than two time points, it is referred to as using a spatio-temporal modelling framework, otherwise purely a spatial model. We report spatial models and spatial-temporal models separately in the results.

For each paper included in our review, the information was extracted relating to the author, publishing journal, the aim of the study, the year of publication, the reported sample size, the length of follow-up, the clinical variables and the demographic data. We also reported how the spatial or spatio-temporal data were obtained, and if the sector-wise or pixel-wise analyses were done (not involving image preprocessing). The type of retinal-related diseases studied in the papers is also reported. Healthy eyes are referred to as eyes without a known history of ocular diseases, and without an identified tumour or severe myopia. We also included whether the paper used two eyes or just one eye for the analyses and whether the correlation between the two eyes was reported, if two eyes data were obtained.

Statistical methods and software used to analyse the spatial or spatio-temporal ophthalmic data are also

recorded in our review. If a method/ software was used to do image preprocessing analyses or other statistical preliminary analyses such as the normality checking, we did not record it in our review. If a paper used a spatial approach to analyse the spatial or spatio-temporal ophthalmic data cited from another paper where the method was initially developed or applied in clinical imaging data, the reference cited was also included in our review.

We also reported whether the spatial correlation was considered and adjusted in the included paper. If the term ‘spatial distribution’ was mentioned in the paper, we recorded the way how the spatial distribution was reported. If a spatio-temporal modelling was used, the effect of adding temporal information into models was extracted in terms of whether it improved the prediction precision and accuracy.

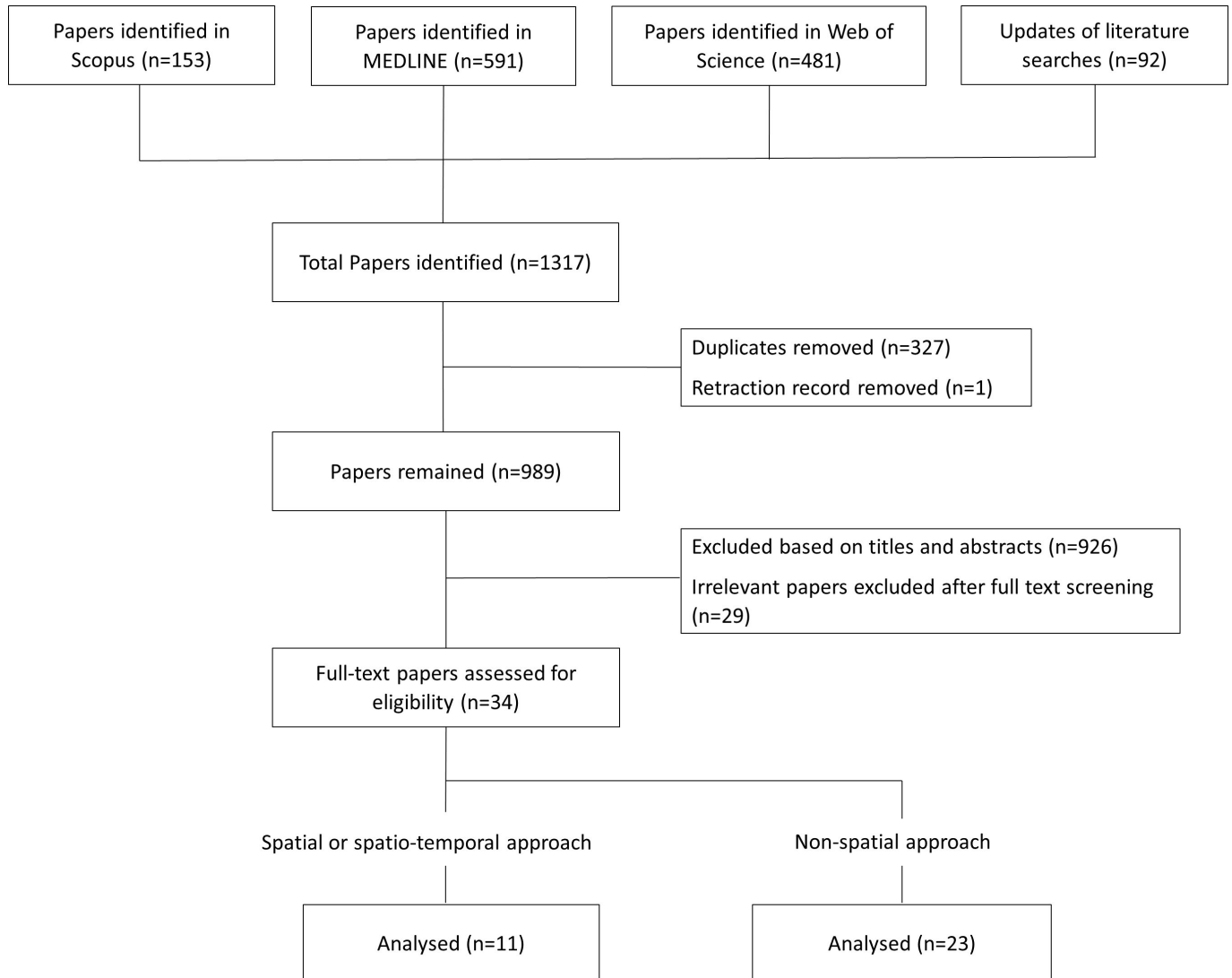
## RESULTS

The databases Scopus, MEDLINE (Ovid interface), Web of Science were searched on 27 September 2018. We restricted our search to the English language published papers starting from the year 2012, and updated the searches on 26 March 2019. The flowchart of the progress is shown in figure 2. A total of 989 papers were identified based on the search strategy from three databases after removing duplicates and one retraction record. Titles and abstracts of these 989 papers were screened, which excluded 926 papers. After full-text extraction, 34 papers remained which analysed spatial or spatio-temporal ophthalmic images,<sup>15 6 11–44</sup> among which 11 papers used spatial, or spatio-temporal modelling framework and 23 papers implemented non-spatial analyses to the data.

#### Characteristics of the selected papers

Characteristics of the selected papers are listed in table 1, where the number of papers using either spatial approach ( $N_1$  (%), including spatial and spatio-temporal) or a non-spatial approach ( $N_2$  (%)) was recorded for each extracted information.

Among 34 included papers, 28 (82.4%) of them involve ophthalmic images obtained at only one or two time points; 6 (17.6%) studies include images from more than two time points. Table 1 shows that most of the selected papers perform sector-wise analyses and 7 (20.6%) papers analyse images in a pixel-wise manner. In contrast, 2 (5.9%) papers conducted categorical analyses of the feature of interest in the images in terms of presence or absence. In regards to the number of eyes per patient involved in the statistical analyses, 19 (55.9%) papers use one eye per subject, where the chosen eye is referred to as the study eye. Moreover, it was selected in one of these mechanisms: the eye with better best-corrected visual acuity or with the best image quality, or randomly selected eye, or the left eye or the right eye. There were 13 (38.2%) papers that use two eyes per subject, but only six papers consider or report the correlation between two eyes from the same subject, and there were two studies



**Figure 2** Literature review eligibility flowchart for statistical analyses of retinal images.

that did not report clearly whether one or two eyes were used.

#### Year of publication

As shown in [figure 3](#), the distribution of publication time from January 2012 to March 2019 was skewed towards more recent dates with a median publication year in 2017. Over the time duration investigated, there is an overall trend of the increasing number of papers both in the category of non-spatial approach and spatial modelling framework published, and the number of papers in the category of non-spatial approach was still high in 2018.

#### Retina-related diseases

Retina-related disease types are listed in [table 1](#), with the most common including age-related macular degeneration, macular oedema, diabetic retinopathy, glaucoma and retinal artery and retinal vein occlusion. There are also 6 (17.6%) studies that only included eyes with no known or previously presented ocular disease, and 7 (20.6%) studies included age-matched healthy controls

and demonstrated the importance of studying the spatial information in both healthy and unhealthy eyes.

#### Imaging device

Of the included studies, six imaging devices (excluding images taken during the patient recruitment process) were used more than once to obtain spatial or spatio-temporal ophthalmic data (summarised in [table 1](#)). Some papers used more than one imaging capture technique either in the data preparation step or validation procedure. MRI was used only once to detect MRI-visible tumours in the eye.<sup>24</sup>

#### Journal

The included studies were published in a diverse set of journals, with 18 (52.9%) in separate journals and 11 (32.4%) papers published in the same journal 'Investigative Ophthalmology & Visual Science', which is a journal well-known for publishing both clinical and laboratory research in ophthalmology and vision science.

**Table 1** Characteristics of the selected papers

Considered characteristics	Total N (%)	Spatial N <sub>1</sub>	Non-spatial N <sub>2</sub>
<i>Spatial or spatio-temporal data available</i>			
Spatial	28 (82.4)	8	20
Spatial-temporal	6 (17.6)	3	3
<i>Pixel-wise or sector-wise or binary analytic approach</i>			
Sector-wise	25 (73.5)	6	19
Pixel-wise	7 (20.6)	5	2
Binary	2 (5.9)	0	2
<i>One eye or two eyes involved in the analysis</i>			
One eye	19 (55.9)	5	14
Two eyes	13 (38.2)	5	8
Correlation between two eyes considered	6 (17.6)	2	4
Unclear	2 (5.9)	1	1
<i>Retina-related diseases</i>			
Age-matched healthy controls	7 (20.6)	1	6
Healthy eyes	6 (17.6)	2	4
Age-related macular degeneration	6 (17.6)	0	6
Macular oedema	5 (14.7)	1	4
Glaucoma	4 (11.8)	2	2
Diabetic retinopathy	3 (8.8)	2	1
Retinal artery and retinal vein occlusions	3 (8.8)	2	1
Other diseases	7 (20.6)	3	5
<i>Imaging devices</i>			
OCT	21 (61.8)	7	14
Colour fundus	11 (32.4)	5	6
FAF	5 (14.7)	1	4
OCTA	4 (11.8)	1	3
FA	3 (8.8)	1	2
IR	3 (8.8)	1	2
MRI	1 (2.9)	1	1
<i>Journal</i>			
Investigative Ophthalmology & Visual Science	11 (32.4)	3	8
PLoS ONE	3 (8.8)	2	1
British Journal of Ophthalmology	2 (5.9)	0	2
Other (only one study per journal)	18 (52.9)	6	12

Note for 'Retina-related diseases' and 'Imaging devices' more than one disease type or image technique could be recorded per included study giving total >34.

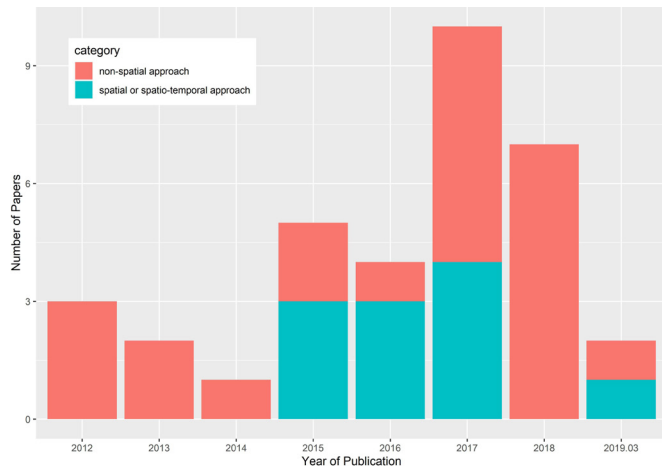
FA, fluorescein angiography; FAF, fundus autofluorescence; IR, infrared reflectance; OCT, optical coherence tomography; OCTA, optical coherence tomography angiography.

### Types of spatial approaches to analysis of retinal images

Of the included 34 papers, 28 (82.4%) papers analysed imaging data at one time point (ie, cross-sectionally) or at two time points (ie, a baseline and one follow-up visit). There were 21 papers where the researchers collected ophthalmic images at one time point and four papers at two time points. In three papers, the researchers collected imaging data at three or more time points; however they

analysed the images from the first and the last time points only, that is, did not perform a longitudinal analysis.

A summary of the description of these 28 studies is listed in table 2. Of the 28 papers, 15 (53.6%) studies mentioned the term 'spatial distribution' or 'topographic distribution' and reported how the spatial distribution looked like (eg, histograms or heatmaps). Other 13 (46.4%) studies did not mention the term 'spatial



**Figure 3** Year of publication of included studies.

distribution’ but presented and compared the measurements of interest obtained from different sectors of the image, for example superior, inferior, nasal and temporal sectors, that is, they effectively reported the values of the ‘spatial distribution’.

#### Aim of investigating the spatial distribution

The main study objectives of the 28 studies were the spatial distribution of specified pathological features in the retina.

Three popular purposes of analysing the spatial distribution of pathology of interest were: (1) identifying the clinical risk factors of a retina-related disease (10 studies), by evaluation of the difference of the distribution between different groups; (2) exploring the relationship between the spatial profile of the pathology and other factors (eight studies); and (3) investigating the progression or detection or diagnosis of a retina-related disease (seven studies).

Other purposes of analysing the spatial distribution of pathology of interest include: to establish normative data; and to propose a novel statistical approach to characterise distributions of interest in the retina.

#### Statistical method used

Of the 28 studies, 19 (67.9%) included demographic data or patient’s clinical variables such as age, gender, smoking status, blood pressure, refractive error, visual acuity, and axial length.

Among the 28 included studies, the preferred statistical method (64.32%, 18 studies in total) for imaging data was a simple statistical hypothesis test. For example, Student’s t-test,  $\chi^2$  test, Tukey test, Mann-Whitney U test or Spearman correlation test was applied on sectors in separate analyses. Interestingly, in most studies, the reported aim was to identify (or characterise) the spatial distribution or spatial profile of pathology of interest. However, they used a non-spatial data analysis method, which utilises simple ‘non-spatial’ metrics such as the frequency, odds ratios, or  $\chi^2$  statistics, and does not acknowledge the spatial correlations.

In the category of non-spatial statistical approaches, there are also three papers that applied linear regression, linear mixed-effect models or generalised estimating equations.<sup>20 22 30</sup> In these papers, the spatial data from different sectors were analysed separately (ie, each sector was analysed in one analysis) rather than in a whole-image modelling framework. Another approach used in these studies was averaging all the measurements from all the sectors and then using this single mean value in a linear modelling analysis, which neglected the potential variation in the spatial distribution.

Of the eight<sup>1 6 13 15 24 31 32 39</sup> papers identified in the category of the spatial statistical modelling framework, there were five types of statistical methods recorded for the analysis of the spatial data: GLM, linear mixed-effect model, generalised estimating equation, empirical quantification without specified model and spatial point process model. The study that used empirical estimates did not clearly specify a statistical model, and they estimated the probability density function of a random variable of interest using a non-parametric bootstrapping technique.<sup>32</sup> In the study that used the point process modelling for the spatial data,<sup>24</sup> the relevant methodological papers<sup>45 46</sup> were properly cited.

#### Spatial correlation and statistical methods to account for spatial correlation

As shown in table 2, of the 28 studies analysing the spatial imaging data, 12 (42.9%) studies mentioned the term ‘spatial correlation’ in their Methods or Results sections. Out of these 12 studies, seven studies reported spatial correlation estimates between different spatial locations in the retina, while there were only three studies taking spatial correlation into account and including it in the modelling framework, and the other four studies reporting Pearson correlations of variables measured in different spatial sectors. The remaining 5 (17.9%) studies mentioning the ‘spatial correlation’ or the ‘spatial relationship’ referred to the association between variables of interest from multiple subjects in each retinal sector.

In three published papers,<sup>1 6 15</sup> the spatial correlation is being accounted for as within-subject variability in the analysis, and this is accomplished by using generalised estimating equation and linear mixed-effect model.

A flexible framework to analyse the spatial imaging data is linear mixed-effect modelling. Linear mixed effect models are capable of quantifying both between-subject and within-subject variations, which are characterised by random effects and random errors, respectively.<sup>47</sup> Another flexible approach for analysis of the spatial imaging data is via generalised estimating equations.<sup>48</sup> It does not assume distribution for the responses. For each  $Y_i$ , a variance–covariance matrix  $V_i$  and the mean  $\mu_i$  is assumed, where the expectation  $\mu_i$  is connected to the linear predictor through a link function  $g(\mu_i) = x_i^T \beta$ , and  $V_i$  is formulated as  $\phi S_i^{1/2} G_i(\alpha) S_i^{1/2}$  with a  $n_i \times n_i$  working

**Table 2** Summary description of reviewed papers on spatial data from retinal images

	Total N (%)	Spatial N <sub>1</sub>	Non-spatial N <sub>2</sub>
<i>Number of time points</i>			
1	21 (75.0)	7	14
2	4 (14.3)	0	4
≥3	3 (10.7)	1	2
<i>Whether spatial distribution mentioned</i>			
Yes	15 (53.6)	6	9
No (but sector-wise measurements mentioned)	13 (46.4)	2	11
<i>Aim of investigating spatial data</i>			
To identify clinical risk factors of a retina-related disease	10 (35.7)	1	9
To identify the topographic profile of one risk factor and its relationship with other risk factors	8 (32.1)	2	6
To investigate progression/detection/diagnosis of a retina-related disease	7 (25.0)	5	2
To establish normative data	2 (7.1)	0	2
To propose a spatial statistical approach	1 (3.6)	1	0
<i>Clinical variables included</i>	19 (67.9)	6	13
<i>Method used</i>			
Statistical hypothesis tests	18 (64.3)	0	18
Linear/GLM	3 (10.7)	2	1
Linear/generalised linear mixed-effect model	3 (10.7)	2	1
Generalised estimating equation	3 (10.7)	2	1
Empirical estimates	2 (7.1)	1	1
Point process model	1 (3.6)	1	0
<i>Spatial correlation considered in analysis</i>	12 (42.9)	5	7
Correlation of one variable between different locations	7 (25.0)	3	4
Correlation between two variables in separate locations	5 (17.9)	2	3
<i>How spatial information/distribution reported</i>			
Line graph	12 (42.9)	5	7
Table	10 (35.7)	0	10
Colour intensity map	9 (32.1)	4	5
Grayscale intensity map	5 (17.9)	2	3
Contour plot	1 (3.6)	0	1
Not reported	3 (10.7)	1	2
<i>Software</i>			
SPSS	13 (46.4)	3	10
R	6 (21.4)	5	1
R (nlme) <sup>79</sup>	2 (7.1)	2	0
R (spatstat) <sup>80</sup>	1 (3.6)	1	0
R (unspecified packages)	3 (10.7)	2	1
STATA (no available code)	3 (10.7)	1	2
MedCalc	3 (10.7)	0	3
MATLAB (no available code)	2 (7.1)	1	1
SAS (GENMOD) <sup>81</sup>	1 (3.6)	1	0
Unclear	5 (17.9)	0	5

Note for 'Method used', 'How spatial information/distribution reported' and 'Software' more than one method, way of reporting or software could be recorded per included study giving total >28.

GLM, general linear model.

correlation matrix  $G_i(\alpha)$  and a  $n_i \times n_i$  diagonal matrix  $S_i$ . The generalised estimating equations is defined by

$$\sum_{i=1}^m W_i \left\{ \phi S_i^{\frac{1}{2}} G_i(\alpha) S_i^{\frac{1}{2}} \right\}^{-1} (Y_i - \mu_i) = 0$$

where  $W_i$  is a  $n_i \times p$  matrix with the  $j$ th row equals  $\partial \mu_{ij} / \partial \beta$  and  $\phi$  is a scale parameter. In this modelling framework, the working correlation matrix is able to specify different forms of within-subject correlations.

#### How the spatial distribution was reported

As shown in table 2, the form of presenting the estimated spatial distribution of the retinal pathologies were line charts, tables with mean measurements and SD in each sector, colour or grayscale intensity maps and contour plots. Of the 28 papers mentioning the terms 'spatial information' or 'spatial distribution', there were 3 (10.7%) studies not presenting the distribution visually.

#### What software was used?

Software used in the included 28 studies is listed in table 2 (references included in the table). In 5 (17.9%) studies, it was unclear which software was implemented for analysing the spatial imaging data. Also, there were 5 (17.9%) studies reporting more than one software used in their analyses.

SPSS, R, MATLAB and STATA are mentioned more than once across the 28 studies. The most popular software used is SPSS, possibly because the data analysis is straightforward to be conducted in SPSS if simpler statistical analysis is used. R is the next most popular software used, which might be owing to the availability of various modelling packages being developed. However, the availability of packages or codes used is not always stated clearly in the published papers.

#### Spatio-temporal analyses of longitudinally collected ophthalmic imaging data

Next, we reviewed studies that analyses imaging data collected at three or more time points. We refer to them as 'spatio-temporal data'. Of the 34 included studies, 6 (17.6%) used three or more time points data and analysed them using longitudinal approach.<sup>11 17 27 29 37 38</sup> There were four papers involving imaging data recorded at more than five time points. The summary characteristics of the identified spatio-temporal modelling studies are described in table 3.

#### Aim of analysing spatio-temporal data

The reviewed papers reported various aims when analysing spatio-temporal data (table 3). Some studies had multiple goals. Three common aims were predicting the retina-related diseases, establishing the normative data that is, the topographic distribution and its change over time and detecting or evaluating the progression of retina-related diseases over time. Papers reporting the aim for the prediction used a spatial analysis framework, while all papers designed to investigate topographic

distribution or to detect/evaluate the progression of diseases used a non-spatial analysis framework.

#### Statistical method used for spatio-temporal data

Of the identified six papers, elastic net regularised sparse logistic regression<sup>49</sup> was used twice to predict binary outcomes. The elastic net is a regularised regression method to select variables when fitting a linear model or generalised linear model (GLM). One paper<sup>37</sup> was aimed at predicting two different types of variables: a binary variable (eg, if the disease reoccurs) and a continuous variable (eg, when the disease reoccurs). The binary variable was modelled and predicted using an elastic net regularised sparse logistic regression. In contrast, the temporal variable was modelled and predicted using a Cox proportional hazards model<sup>50</sup> via the elastic net. Another paper<sup>38</sup> implemented two different models to predict binary outcomes, namely the sparse logistic regression via elastic net and the extremely randomised trees.<sup>51</sup>

This review showed that a useful method for the analysis of spatio-temporal retinal images data proves to be the elastic net regularised sparse logistic regression. Under the elastic net regularised sparse logistic regression modelling framework, for each individual  $i$ , the probability  $p_i$  of binary outcomes  $y_i$  are modelled as a logit function of the input covariates  $\mathbf{x}_i$ :  $p_i = \text{logit}^{-1}(\mathbf{x}_i \mathbf{w})$  with  $p_i = p(y_i = 1 | \mathbf{x}_i)$ . The response function is formulated as a linear function of the input covariates:  $f(y_i) = w_0 + w_1 x_1 + w_2 x_2 + w_3 x_3 + \dots + w_p x_p = \mathbf{x}_i \mathbf{w}$ , where the coefficients are estimated from a spatio-temporal signature matrix  $\mathbf{x}$  by minimising the following objective function,

$$\text{argmin}_w - \frac{1}{n} \sum_{i=1}^n y_i \mathbf{x}_i^T \mathbf{w} - \ln(1 + \exp(\mathbf{x}_i^T \mathbf{w})) + \lambda \left( \alpha \|\mathbf{w}\|_1 + \frac{1-\alpha}{2} \|\mathbf{w}\|_2^2 \right)$$

The overall amount of penalty is controlled by  $\lambda$ , and  $\alpha$  defines the elastic-net penalty, which balance the ratio between Least Absolute Shrinkage and Selection Operator (LASSO), the  $l_1$  regularisation ( $\alpha=1$ ), and ridge, the  $l_2$  regularisation ( $\alpha=0$ ) penalty.

Another common approach to the analysis of spatio-temporal data was linear mixed-effect models or generalised linear mixed effect models. The models were implemented in two ways. One way was to analyse the temporal data repeatedly for different locations (or sectors) using mixed-effect model. Another way was to model the spatial data at each time point separately. For such modelling, simple statistical tests were then used, such as Friedman test, Pearson's correlation analysis or Fisher exact test.

Adding clinical data to the spatial analysis is an essential and challenging task. Among the studies that analysed spatio-temporal data, only two studies combined their imaging data with clinical data in their analyses. The patient's age was a common demographic variable used in their analyses. Regarding the spatial correlation, there was only one study that performed



**Table 3** Summary description of reviewed papers that analyse spatio-temporal data from retinal images

	Total N (%)	Spatial N <sub>1</sub>	Non-spatial N <sub>2</sub>
<i>Number of time points</i>			
3	1 (16.7)	0	1
4	1 (16.7)	0	1
≥5	4 (66.7)	3	1
<i>Aim of analysing spatio-temporal information</i>			
To predict retina-related disease or treatment response pattern	2 (33.3)	2	0
To establish normative data	2 (33.3)	0	2
To investigate progression/detection/diagnosis of a retina-related disease	2 (33.3)	0	2
To evaluate the relationship between risk factors and longitudinally measured variables	1 (16.7)	0	1
To understand the physiology of eye	1 (16.7)	1	0
<i>Clinical variables included</i>	2 (33.3)	0	2
<i>Method used</i>			
Sparse logistic regression via elastic net	2 (33.3)	2	0
Linear/generalised linear mixed effect model	2 (33.3)	1	1
Statistical hypothesis test	2 (33.3)	0	2
Cox proportional hazards model via elastic net	1 (16.7)	1	0
Extremely randomised trees	1 (16.7)	1	0
<i>Spatial correlation considered (correlation of one variable between different locations)</i>	3 (50.0)	2	1
<i>Whether adding longitudinal outcomes increase prediction precision</i>			
Yes	2 (33.3)	2	0
No or unclear	1 (16.7)	1	0
<i>Software/software library</i>			
R (glmnet) <sup>82</sup>	2 (33.3)	2	0
SPSS	2 (33.3)	0	2
SAS (GLIMMIX)	1 (16.7)	1	0
STATA (no available code)	1 (16.7)	0	1
Optunity <sup>83</sup>	1 (16.7)	1	0
Scikit-learn <sup>84</sup>	1 (16.7)	1	0

Note for 'Aim of analysing spatio-temporal information', 'Method used' and 'Software/software library' multiple aims, methods or software could be recorded per included paper giving total >6. For 'Whether adding longitudinal outcomes increase prediction precision', only two papers aimed for prediction and more than one prediction goal could be presented per included paper giving total >2.

and reported the spatial correlations by reporting the correlations between temporal, nasal, superior and inferior sectors. Two studies considered the anatomical spatial locations into the modelling and hence also for the prediction.

#### Software used for spatio-temporal data

The software/software library used in the reviewed spatio-temporal analyses is listed in table 3. The software packages used are also specified (references included if cited in the paper). The most mentioned softwares were R and SPSS, though one research group used the same R package (glmnet) in their two papers to perform sparse logistic regression via elastic net. The studies that applied

simpler statistical tests used SPSS. None of the reviewed studies provided the software code.

#### Spatio-temporal modelling of images in other medical specialties

Ophthalmology is one of the medical specialties that has a comparatively shorter history of applying statistical approaches to images, which can be seen from the number of reviewed papers above. Our second aim was to see what spatio-temporal methods are used in other medical specialties and what can be potentially useful for ophthalmic images. Spatial statistical models have been successfully used for a long time in other medical

imaging, such as functional neuroimaging data and myocardial perfusion imaging.<sup>7 8 52–57</sup> In order to get a methodological overview of the spatio-temporal modelling framework in other medical imaging specialties, we used MEDLINE (Ovid interface) to search for relevant papers based on the search strategies listed in online supplementary file 1. The aim of this secondary review was not to conduct a comprehensive analysis of all papers from all medical specialties. Instead, we aimed to understand the available spatio-temporal models in the recent literature of medical imaging and to assess their usefulness for images in ophthalmology.

Searches were conducted on 26 March 2019, which was restricted to the English language published papers from the year 2007. In total, 346 papers were included, and 42 remained after the abstract screening. One duplicate, describing analyses of retinal images, was removed, and 21 irrelevant papers were discarded. In total, 20 papers were identified,<sup>8 52–56 58–71</sup> which presented spatio-temporal statistical approaches with application in medical images. Among the included papers, one review article was found, which discussed Bayesian spatio-temporal models for analyses of fMRI data to estimate task-related activation patterns.<sup>70</sup>

The extracted information includes the image capture techniques, the statistical approach used, the indication of whether a clinical variable was incorporated, whether the spatial and temporal correlation was accounted for and whether a disease prediction was performed in the studies.

#### Spatio-temporal statistical methods used for imaging data in other medical specialties

Of the 19 selected papers (excluding one review article), there were five types of image capture techniques used, including MRI, fMRI, positron emission tomography, magnetoencephalography and electroencephalography. In this section, we report the statistical methods used to analyse spatial-temporal data collected from medical imaging.

One of the most popular statistical approaches is to apply the linear or GLM to the imaging data. Two studies took a Bayesian approach, and incorporate the space and time context as prior information in the model. Another three studies took a frequentist approach where they built parametric covariance models for spatial and temporal data separately. Both the Bayesian and frequentist approaches captured the spatial and temporal correlations in the analyses.

Besides, two papers used mixed-effect models. One paper proposed a functional non-linear mixed-effect model that considered non-linear spatial-temporal patterns of the imaging data. The other paper proposed a method to analyse the longitudinal imaging data in a mass univariate way, and the spatial and time series relationships are separately included using non-diagonal covariance matrices.

Other Bayesian approaches used include Gaussian process-based spatial-temporal models, hidden Markov models, sparse Bayesian learning algorithm of the elastic net and elitist LASSO and Bayesian spatial mixture model estimated via Monte Carlo Markov Chain. A more detailed description of the selected papers is available in online supplementary file 3. It includes details, such as whether the clinical variables were incorporated, whether spatial and temporal dependency was included and whether prediction was one of the aims of the studies.

#### DISCUSSION

We presented here the first review on spatial and spatio-temporal statistical methods for analysis of retinal images. Retinal images play an essential role in the research of aetiology and diagnosis of retinal diseases, which show the location and distribution of pathological features relative to the location of two landmarks: optic disc and fovea. We reviewed a collection of retinal studies that can be seen as a representative sample of the current research situation (between January 2012 and March 2019) in the statistical analysis of retinal images that were acquired at one or two time points, or longitudinally.

We find that it is possible to perform spatial analyses of retinal imaging data; however, not many studies considered the spatial context or correlations in their models. Moreover, there is a limited number of studies conducting spatio-temporal analyses, which can be due to the limited availability of spatio-temporal data from retinal images or suitable statistical methods. In our identified papers, we did not find a study that looks into the benefits of incorporating the spatial correlation into the statistical model: in terms of bias and precision. Furthermore, we also found that the reporting of the methods and software is not complete in some publications.

In our review of statistical analyses of imaging data in non-retinal imaging specialties, we also found a more extended history of utilising the spatio-temporal methods for imaging data. Their success indicates the potential and advantage of using spatio-temporal analyses for retinal images. Some of the frequentist or Bayesian statistical models identified in our review can be applied to retinal imaging data. For example, we can specify a separable parametric spatial and temporal relationship in the covariance matrix of a GLM model.<sup>54 58</sup> Alternatively, a Bayesian model can be built where Gaussian Markov random field prior and autoregressive prior are used for spatial and temporal data, respectively.<sup>60</sup> In theory, both models will work for longitudinal retinal imaging. However, neither of these two methods is easy to be implemented as the source code is not available or the software is designed for neuroimaging data (eg, Analysis of Functional NeuroImages; AFNI).<sup>72</sup>

The retinal image availability can be less of the problem in the near future because the technology is progressing for image acquisition, image storing and data sharing. Spatial statistical analyses of retinal images can be a

robust framework for future studies of risk factors, diagnosis, and prediction.<sup>73</sup>

Both statistical and clinical communities recognise the importance of the location information in the retinal images. Theoretically, the statistical community recognises that ignoring spatial correlations can lead to bias and a loss of precision, which is clearly demonstrated in the application of geographical data.<sup>2</sup> The effect of adjusting for spatial correlations can potentially vary in different data scenarios, can depend on sample size or strength of spatial correlations in the images—all of which need further investigation. Practically, the clinical community recognises the importance of the spatial context in retinal images. The relative spatial location of pathologies is routinely used by clinicians when they do a manual assessment of the image. They use the relative location of features from the images to have an informed deduction when diagnosing the diseases. For example, focal photocoagulation is used when assessing patients with clinically significant maculopathy. The location of the lesion and retinal thickening is considered qualitatively in clinics—as the current state-of-art treatment.<sup>74</sup> Furthermore, density or eccentricity maps have been developed to quantitatively describe capillary perfusion in the parafoveal areas of the retina,<sup>75 76</sup> which provides potential possibilities of considering spatial context and using statistical methods in the analysis of retinal imaging data.

A limitation of our retinal imaging review is that some studies may not be included if the key search terms are not in the accessible texts. For example, Gadde *et al*<sup>5</sup> used repeated measurement analysis of variance, and they performed it for different directions and circular zones in the retina, which considered the spatial context in the retina, but this was not clear from the title and abstract. Thus it is not included in our review. Also, in our secondary non-retinal imaging review, we did not include a heavily used statistical analysis in fMRI called statistical parametric mapping,<sup>77</sup> because we only focus on spatio-temporal statistical analyses in other medical specialties.

It is important to say that, in general, there are two approaches to analysing the images. The first approach directly uses the images to make inference about disease detection or to assess the probability of disease; hence it can be seen as a one-step approach. This approach needs a highly computational method for image analysis, such as deep learning methods, and usually requires a large sample size. The second approach proceeds in two steps: the first step is to process the image to obtain imaging features (eg, segmentation of vessels) automatically, and then the features are analysed via spatial statistical methods or machine-learning methods. In this second step, it is both statistical and machine-learning methods that rely heavily on the image preprocessing (ie, the first step). Due to the sequential nature of this two-step approach, the spatial statistical and machine-learning methods (ie, the second step) would not affect the quality or the results of the image preprocessing. However, one

mitigation would be incorporating the quality of the images or image preprocessing (as another variable or via specifying a relevant error structure in the spatial model) in the second step of the analysis. Furthermore, we recommend researchers to report the robustness and accuracy of the image preprocessing or data acquisition process (ie, the first step) in addition to their spatial statistical or machine-learning interpretations.

Compared with machine-learning methods (including the deep learning one-step approach), the spatial statistical methods can be more suitable for retinal images in the following scenarios. (1) The sample size is not large enough for the training of machine-learning methods. (2) An intuitive interpretation of the model (eg, how the preprocessed imaging data relate to the disease) is essential. The statistical methods have a lower number of parameters compared with machine-learning methods and have existing paradigms of adding risk factors and prior knowledge into the model to, for example, study aetiology of the disease. (3) The researchers need to design a cost-efficient clinical trial. In some studies, the research question may allow reducing the high dimensionality of imaging data so that the spatial statistical approach is beneficial to use.<sup>6</sup>

### Recommendations

Our recommendations are driven by two primary concerns. First, there is low utilisation of spatial information in reviewed studies. The potential of the spatial information in retinal images has not been fully studied in most of the review papers. In some cases, the pathological features have been spatially automatically identified successfully, but the data were then averaged in order to use simple statistical methods. In the spatial statistics, it is a well-known fact that the nearby recorded data may be associated with each other in some way<sup>78</sup> and that ignoring it can lead to bias and a loss of precision. However, only 10 (29.4%) of the studies considered such spatial correlations of the pathology of interest between different locations, and only 5 (14.7%) of them included the spatial correlations in their spatial statistical model. It is, therefore, crucial to do studies where one compares and reports the models with various specifications of spatial correlations: with no spatial correlation and with appropriate adjustment to spatial correlation. Further research and guideline are needed to show researchers how to find the best adjustment for the spatial correlations such as via model selection methods.

Our second concern is the reporting of spatial distribution. It was unclear in many reviewed studies what the estimated spatial distribution was because the spatial distribution of the pathology of interest was not clearly defined or not clearly presented or not visualised. We provide several recommendations for the future statistical analyses and the reporting of spatial retinal imaging data. They can apply to other types of imaging data outside of ophthalmology (box 1).

### Box 1 Recommendations for future statistical analyses of retinal imaging data as well as for reporting of such analyses

1. Unless reasons are given, the spatial data from retinal images should not be averaged into one measurement for the statistical analyses.
2. Spatial correlations (of one pathology of interest between different sectors) should be reported. Statistical analysis should be conducted with and without adjustment for spatial correlations, and both results should be reported.
3. Definitions of spatial distributions of the feature of interest need to be clearly stated, and the spatial distributions (or density map) need to be clearly reported.
4. Clinical variables should be included in the analysis, due possible confounding, if relevant and if they were recorded.
5. Software (or packages) used should be clearly stated, or codes should be available upon request.

Due to the need for patient monitoring and disease management in clinics, it is essential to combine spatial imaging data with clinical variables, which could provide causality or relevance between clinical variables, disease prognosis, or prediction. Additionally, for research reproducibility, it is crucial to specify the software and the packages or the functions used in the analysis, so it is possible to understand (after a reasonable effort) how the spatial data and the spatial correlations were analysed.

### CONCLUSION

This review reports the current state of knowledge and practice in spatial and spatio-temporal statistical methods for retinal images. We found a limited number of publications reporting spatial and spatio-temporal statistical methods, and this work brought us to the acute question of how big a difference will it make to adjust for spatial correlations in retinal imaging.

Further development needs to be done by the statistical community to develop the spatio-temporal methods as well as the software. The complexity of having both the spatial and temporal components is large; hence more developmental focus is needed.

In the future, the spatial context and spatial correlations in retinal images should be reported and taken into consideration in the analyses. This will allow readers to compare the differences in adjusting and not adjusting spatial correlations in terms of diagnosis or prediction error, parameter estimates and standard errors. The combination of spatial imaging data with clinical data, the spatial and spatio-temporal framework can help bring further light into understanding of the risk factors, improve the automated algorithms in decision support systems for clinical diagnosis and can improve the trial design by lowering the sample size and bringing more refined definitions of the imaging markers.

**Contributors** All authors contributed to the design of the investigation and to the interpretation of the results of the investigation. WZ extracted data from the identified papers, conducted analyses and wrote the first draft of the manuscript. All authors edited and approved the final manuscript.

**Funding** WZ would like to acknowledge the PhD funding from Institute of Ageing and Chronic Disease and Institute of Translational Medicine at University of Liverpool and the Royal Liverpool University Hospital.

**Competing interests** YZ, GC were authors on two of the papers identified in this review. SH was an author on one of the papers identified in this review.

**Patient consent for publication** Not required.

**Provenance and peer review** Not commissioned; externally peer reviewed.

**Open access** This is an open access article distributed in accordance with the Creative Commons Attribution Non Commercial (CC BY-NC 4.0) license, which permits others to distribute, remix, adapt, build upon this work non-commercially, and license their derivative works on different terms, provided the original work is properly cited, appropriate credit is given, any changes made indicated, and the use is non-commercial. See: <http://creativecommons.org/licenses/by-nc/4.0/>.

### ORCID iDs

Wenyue Zhu <http://orcid.org/0000-0002-5731-4364>

Ruwanthi Kolamunnage-Dona <http://orcid.org/0000-0003-3886-6208>

Yalin Zheng <http://orcid.org/0000-0002-7873-0922>

Simon Harding <http://orcid.org/0000-0003-4676-1158>

Gabriela Czanner <http://orcid.org/0000-0002-1157-2093>

### REFERENCES

- 1 MacCormick IJC, Zheng Y, Czanner S, *et al*. Spatial statistical modelling of capillary non-perfusion in the retina. *Sci Rep* 2017;7:16792.
- 2 Cressie N. Statistics for spatial data. *Terra Nova* 1992;4:613–7.
- 3 Grading diabetic retinopathy from stereoscopic color fundus photographs—an extension of the modified Airlie House classification. ETDRS report number 10. Early Treatment Diabetic Retinopathy Study Research Group. *Ophthalmology* 1991;98:786–806.
- 4 Browning DJ, Glassman AR, Aiello LP, *et al*. Optical coherence tomography measurements and analysis methods in optical coherence tomography studies of diabetic macular edema. *Ophthalmology* 2008;115:1366–71.
- 5 Gadde SGK, Anegondi N, Bhanushali D, *et al*. Quantification of vessel density in retinal optical coherence tomography angiography images using local fractal dimension. *Invest Ophthalmol Vis Sci* 2016;57:246–52.
- 6 MacCormick IJC, Williams BM, Zheng Y, *et al*. Accurate, fast, data efficient and interpretable glaucoma diagnosis with automated spatial analysis of the whole cup to disc profile. *Plos One* 2019;14.
- 7 Bowman FD, Waller LA. Modelling of cardiac imaging data with spatial correlation. *Stat Med* 2004;23:965–85.
- 8 Bowman FD. Spatiotemporal models for region of interest analyses of functional neuroimaging data. *J Am Stat Assoc* 2007;102:442–53.
- 9 Brown EN, Behrmann M. Controversy in statistical analysis of functional magnetic resonance imaging data. *Proc Natl Acad Sci U S A* 2017;114:E3368–9.
- 10 Mitchell TM. Machine learning. 1997. Burr ridge, IL: McGraw Hill 1997;45:870–7.
- 11 Ahn SJ, Joung J, Lim HW, *et al*. Optical coherence tomography protocols for screening of hydroxychloroquine retinopathy in Asian patients. *Am J Ophthalmol* 2017;184:11–18.
- 12 AttaAllah HR, Mohamed AAM, Ali MA. Macular vessels density in diabetic retinopathy: quantitative assessment using optical coherence tomography angiography. *Intern Ophthalmol* 2018;1–15.
- 13 Balaratnasingam C, Chae B, Remmer MH, *et al*. The spatial profile of macular pigments is related to the topological characteristics of the foveal avascular zone. *Invest Ophthalmol Vis Sci* 2015;56:7859–65.
- 14 Baptista AMG, Nascimento SMC. Changes in spatial extent and peak double optical density of human macular pigment with age. *J Opt Soc Am A Opt Image Sci Vis* 2014;31:A87–92.
- 15 Cheng H, Kaszubski PA, Hao H, *et al*. The relationship between reticular macular disease and choroidal thickness. *Curr Eye Res* 2016;41:1492–7.
- 16 Cifuentes-Canorea P, Ruiz-Medrano J, Gutierrez-Bonet R, *et al*. Analysis of inner and outer retinal layers using spectral domain optical coherence tomography automated segmentation software in ocular hypertensive and glaucoma patients. *PLoS One* 2018;13:e0196112.

- 17 Diniz-Filho A, Abe RY, Zangwill LM, *et al.* Association between intraocular pressure and rates of retinal nerve fiber layer loss measured by optical coherence tomography. *Ophthalmology* 2016;123:2058–65.
- 18 Fleissig E, Cohen S, Igllick M, *et al.* Changes in choroidal thickness in clinically significant pseudophakic cystoid macular edema. *Retina* 2018;38:1629–35.
- 19 Gabriel M, Kruger R, Shams-Mafi F, *et al.* Mapping retinal and choroidal thickness in unilateral nongranulomatous acute anterior uveitis using three-dimensional 1060-nm optical coherence tomography. *Invest Ophthalmol Vis Sci* 2017;58:4778–83.
- 20 Greenberg JP, Duncker T, Woods RL, *et al.* Quantitative fundus autofluorescence in healthy eyes. *Invest Ophthalmol Vis Sci* 2013;54:5684–93.
- 21 Haj Najeeb B, Simader C, Deak G, *et al.* The distribution of leakage on fluorescein angiography in diabetic macular edema: a new approach to its etiology. *Invest Ophthalmol Vis Sci* 2017;58:3986–86.
- 22 Hogg RE, Ong EL, Chamberlain M, *et al.* Heritability of the spatial distribution and peak density of macular pigment: a classical twin study. *Eye* 2012;26:1217–25.
- 23 Jha B, Sharma R, Vanathi M, *et al.* Effect of phacoemulsification on measurement of retinal nerve fiber layer and optic nerve head parameters using spectral-domain-optical coherence tomography. *Oman J Ophthalmol* 2017;10:91–5.
- 24 King BA, Parra C, Li Y, *et al.* Spatiotemporal patterns of tumor occurrence in children with intraocular retinoblastoma. *PLoS One* 2015;10:e0132932.
- 25 Klimscha S, Waldstein SM, Schlegl T, *et al.* Spatial correspondence between intraretinal fluid, subretinal fluid, and pigment epithelial detachment in neovascular age-related macular degeneration. *Invest Ophthalmol Vis Sci* 2017;58:4039–48.
- 26 Kwon J, Choi J, Shin JW, *et al.* An optical coherence tomography angiography study of the relationship between foveal avascular zone size and retinal vessel density. *Invest Ophthalmol Vis Sci* 2018;59:4143–43.
- 27 Lu CD, Lee B, Schottenhamml J, *et al.* Photoreceptor layer thickness changes during dark adaptation observed with Ultra-high-Resolution optical coherence tomography. *Invest Ophthalmol Vis Sci* 2017;58:4632–43.
- 28 Marsiglia M, Boddu S, Bearely S, *et al.* Association between geographic atrophy progression and reticular pseudodrusen in eyes with dry age-related macular degeneration. *Invest Ophthalmol Vis Sci* 2013;54:7362–9.
- 29 Mauschitz MM, Fonseca S, Chang P, *et al.* Topography of geographic atrophy in age-related macular degeneration. *Invest Ophthalmol Vis Sci* 2012;53:4932–32.
- 30 McCarter RV, McKay GJ, Quinn NB, *et al.* Evaluation of coronary artery disease as a risk factor for reticular pseudodrusen. *Br J Ophthalmol* 2018;102:483–9.
- 31 Mirafzabi A, Amini N, Gornbein J, *et al.* Local variability of macular thickness measurements with SD-OCT and influencing factors. *Transl Vis Sci Technol* 2016;5:5.
- 32 Ometto G, Assheton P, Calivá F, *et al.* Spatial distribution of early red lesions is a risk factor for development of vision-threatening diabetic retinopathy. *Diabetologia* 2017;60:2361–7.
- 33 Ozmen MC, Aktas Z, Yildiz BK, *et al.* Retinal vessel diameters and their correlation with retinal nerve fiber layer thickness in patients with pseudoexfoliation syndrome. *Int J Ophthalmol* 2015;8:332–6.
- 34 Shin JW, Sung KR, Lee JY, *et al.* Optical coherence tomography angiography vessel density mapping at various retinal layers in healthy and normal tension glaucoma eyes. *Graefes Arch Clin Exp Ophthalmol* 2017;255:1193–202.
- 35 Strong SA, Hirji N, Quartilho A, *et al.* Retrospective cohort study exploring whether an association exists between spatial distribution of cystoid spaces in cystoid macular oedema secondary to retinitis pigmentosa and response to treatment with carbonic anhydrase inhibitors. *Br J Ophthalmol* 2019;103:233–7.
- 36 Sullivan-Mee M, Amin P, Pensyl D, *et al.* Differentiating occult branch retinal artery occlusion from primary open-angle glaucoma. *Optom Vis Sci* 2018;95:106–12.
- 37 Vogl W-D, Waldstein SM, Gerendas BS, *et al.* Spatio-Temporal signatures to predict retinal disease recurrence. *Inf Process Med Imaging* 2015;24:152–63.
- 38 Vogl W-D, Waldstein SM, Gerendas BS, *et al.* Predicting macular edema recurrence from spatio-temporal signatures in optical coherence tomography images. *IEEE Trans Med Imaging* 2017;36:1773–83.
- 39 Wanek J, Blair NP, Chau FY, *et al.* Alterations in retinal layer thickness and reflectance at different stages of diabetic retinopathy by en face optical coherence tomography. *Invest Ophthalmol Vis Sci* 2016;57:OCT341–7.
- 40 Zeimer M, Dietzel M, Hense HW, *et al.* Profiles of macular pigment optical density and their changes following supplemental lutein and zeaxanthin: new results from the LUNA study. *Invest Ophthalmol Vis Sci* 2012;53:4852–52.
- 41 Zha Y, Zhuang J, Du Y, *et al.* Evaluation of peripapillary choroidal distribution in children by enhanced depth imaging optical coherence tomography. *BMC Ophthalmol* 2018;18:173–73.
- 42 Zhang Q, Neitz M, Neitz J, *et al.* Geographic mapping of choroidal thickness in myopic eyes using 1050-nm spectral domain optical coherence tomography. *J Innov Opt Health Sci* 2015;8:1550012–12.
- 43 Eandi CM, Nassisi M, Lavia C, *et al.* Macular pigment density and quantitative fundus autofluorescence in young healthy subjects. *Invest Ophthalmol Vis Sci* 2017;58:2284–84.
- 44 Mauschitz MM, Fonseca S, Chang P, *et al.* Topography of geographic atrophy in age-related macular degeneration. *Invest Ophthalmol Vis Sci* 2012;53:4932–9.
- 45 Baddeley A, Turner R, Moller J, *et al.* Residual analysis for spatial point processes. *J R Stat Soc B* 2005;67:617–51.
- 46 Baddeley A, Rubak E, Møller J. Score, Pseudo-Score and residual diagnostics for spatial point process models. *Statist. Sci.* 2011;26:613–46.
- 47 Laird NM, Ware JH. Random-effects models for longitudinal data. *Biometrics* 1982;38:963–74.
- 48 Zeger SL, Liang KY, Albert PS. Models for longitudinal data: a generalized estimating equation approach. *Biometrics* 1988;44:1049–60.
- 49 Zou H, Hastie T. Addendum: regularization and variable selection via the elastic net. *J Royal Statistical Soc B* 2005;67:768–68.
- 50 Cox DR, Oakes D. *Analysis of survival data*. CRC Press, 1984.
- 51 Geurts P, Ernst D, Wehenkel L. Extremely randomized trees. *Mach Learn* 2006;63:3–42.
- 52 Castruccio S, Ombao H, Genton MG. A scalable multi-resolution spatio-temporal model for brain activation and connectivity in fMRI data. *Biometrics* 2018;74:823–33.
- 53 Schmid VJ. Voxel-Based adaptive spatio-temporal modelling of perfusion cardiovascular MRI. *IEEE Trans Med Imaging* 2011;30:1305–13.
- 54 George B, Denney T, Gupta H, *et al.* Applying a spatiotemporal model for longitudinal cardiac imaging data. *Ann Appl Stat* 2016;10:527–48.
- 55 Chen S, Langley J, Chen X, *et al.* Spatiotemporal modeling of brain dynamics using resting-state functional magnetic resonance imaging with Gaussian hidden Markov model. *Brain Connect* 2016;6:326–34.
- 56 Hyun JW, Li Y, Huang C, *et al.* STGP: spatio-temporal Gaussian process models for longitudinal neuroimaging data. *Neuroimage* 2016;134:550–62.
- 57 Chen G, Saad ZS, Britton JC, *et al.* Linear mixed-effects modeling approach to fMRI group analysis. *Neuroimage* 2013;73:176–90.
- 58 Derado G, Bowman FD, Kilts CD. Modeling the spatial and temporal dependence in fMRI data. *Biometrics* 2010;66:949–57.
- 59 Wang G. High Temporal-Resolution dynamic PET image reconstruction using a new spatiotemporal kernel method. *IEEE Trans Med Imaging* 2019;38:664–74.
- 60 Harrison LM, Green GGR. A Bayesian spatiotemporal model for very large data sets. *Neuroimage* 2010;50:1126–41.
- 61 Lorenzi M, Ziegler G, Alexander DC, *et al.* Efficient Gaussian Process-Based modelling and prediction of image time series. *Inf Process Med Imaging* 2015;24:626–37.
- 62 Luessi M, Babacan SD, Molina R, *et al.* Bayesian symmetrical EEG/fMRI fusion with spatially adaptive priors. *Neuroimage* 2011;55:113–32.
- 63 Luo X, Zhu L, Kong L, *et al.* Functional nonlinear mixed effects models for longitudinal image data. *Inf Process Med Imaging* 2015;24:794–805.
- 64 Nathoo FS, Babul A, Moiseev A, *et al.* A variational Bayes spatiotemporal model for electromagnetic brain mapping. *Biometrics* 2014;70:132–43.
- 65 Oikonomou VP, Tripoliti EE, Fotiadis DI. A bayesian spatio-temporal approach for the analysis of FMRI data with non-stationary noise. *Conf Proc IEEE Eng Med Biol Soc* 2009;2009:4444–8.
- 66 Paz-Linares D, Vega-Hernández M, Rojas-López PA, *et al.* Spatio-temporal EEG source imaging with the hierarchical Bayesian elastic net and Elastic LASSO models. *Front Neurosci* 2017;11:635.
- 67 Quirós A, Diez RM, Wilson SP. Bayesian spatiotemporal model of fMRI data using transfer functions. *Neuroimage* 2010;52:995–1004.
- 68 Quirós A, Diez RM, Gamerman D. Bayesian spatiotemporal model of fMRI data. *Neuroimage* 2010;49:442–56.
- 69 Wang Y, Resnick SM, Davatzikos C. Spatio-temporal analysis of brain MRI images using hidden Markov models. In: *Conf Proc Med Image Comput Comput-Assis Interv.* Berlin, Heidelberg: Springer, 2010: 160–8.



- 70 Zhang L, Guindani M, Vannucci M. Bayesian models for fMRI data analysis. *Wiley Interdiscip Rev Comput Stat* 2015;7:21–41.
- 71 Zhu W, Ouyang J, Rakvongthai Y, et al. A Bayesian spatial temporal mixtures approach to kinetic parametric images in dynamic positron emission tomography. *Med Phys* 2016;43:1222–34.
- 72 Cox RW. AFNI: software for analysis and visualization of functional magnetic resonance NeuroImages. *Comput Biomed Res* 1996;29:162–73.
- 73 Zhu W, JY K, Zheng Y, et al. Spatial Modelling of Retinal Thickness in Images from Patients with Diabetic Macular Oedema.. In: *Conf proc Med image understand anal*. Cham: Springer, 2019: 114–26.
- 74 Early Treatment of Diabetic Retinopathy Study Research Group. Focal photocoagulation treatment of diabetic macular edema. Relationship of treatment effect to fluorescein angiographic and other retinal characteristics at baseline. ETDRS report number 19. *Ophthalmology* 1995;113:1144–55.
- 75 Krawitz BD, Phillips E, Bavier RD, et al. Parafoveal Nonperfusion analysis in diabetic retinopathy using optical coherence tomography angiography. *Transl Vis Sci Technol* 2018;7:4.
- 76 Andrade Romo JS, Linderman RE, Pinhas A, et al. Novel development of parafoveal capillary density deviation mapping using an age-group and eccentricity matched normative OCT angiography database. *Transl Vis Sci Technol* 2019;8:1.
- 77 Lindquist MA. The statistical analysis of fMRI data. *Statist. Sci.* 2008;23:439–64.
- 78 Getis A. Spatial statistics. In: Longley PA, Goodchild MF, Maguire DJ, et al, eds. *Geographical information systems*. 2nd edn. New York: Wiley, 2000: 239–51.
- 79 Pinheiro J, Bates D, DebRoy S, et al. nlme: linear and nonlinear mixed effects models. R package version 2013;3:111.
- 80 Baddeley A, Turner R. spatstat: An R Package for Analyzing Spatial Point Patterns. *J Stat Softw* 2005;12:1–42.
- 81 Kleinbaum DG, Kupper LL, Nizam A, et al. Applied regression analysis and other multivariable methods. Nelson education 2013.
- 82 Friedman J, Hastie T, Tibshirani R. Regularization paths for generalized linear models via coordinate descent. *J Stat Softw* 2010;33:1–22.
- 83 Claesen M, Simm J, Popovic D, et al. Easy Hyperparameter Search Using Optunity. *arXiv preprint arXiv:1412.1114* 2014.
- 84 Pedregosa F, Varoquaux G, Gramfort A, et al. Scikit-learn: machine learning in python. *J Mach Learn Res* 2011;12:2825–30.