

Supplemental Material

Journal name:

Applied Microbiology and Biotechnology

Manuscript Title:

Prediction of Delayed Graft Function by Early Salivary Microbiota Following Kidney Transplantation

The name(s) of the author(s):

Xuyu Xiang^{1,2,†}, Bo Peng^{1,2,†}, Kai Liu^{1,2}, Tianyin Wang^{1,2}, Peng Ding^{1,2}, Yi Zhu^{1,2}, Ke Cheng^{1,2} and Yingzi Ming^{1,2,*}

The affiliation(s) and address(es) of the author(s):

1 The Transplantation Center of the Third Xiangya Hospital, Central South University, Changsha 410013, China

2 Engineering and Technology Research Center for Transplantation Medicine of National Health

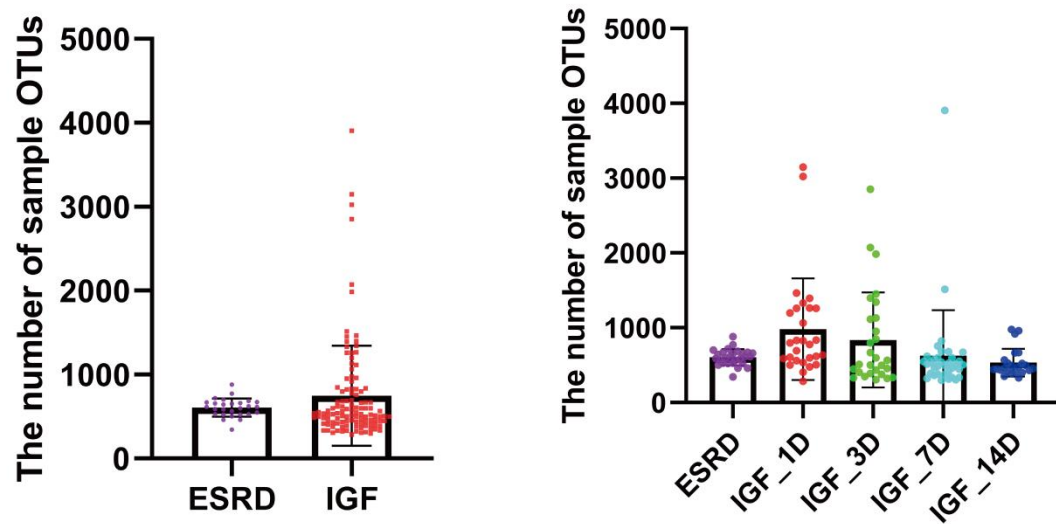
The e-mail address, telephone and fax numbers of the corresponding author:

Yingzi Ming,

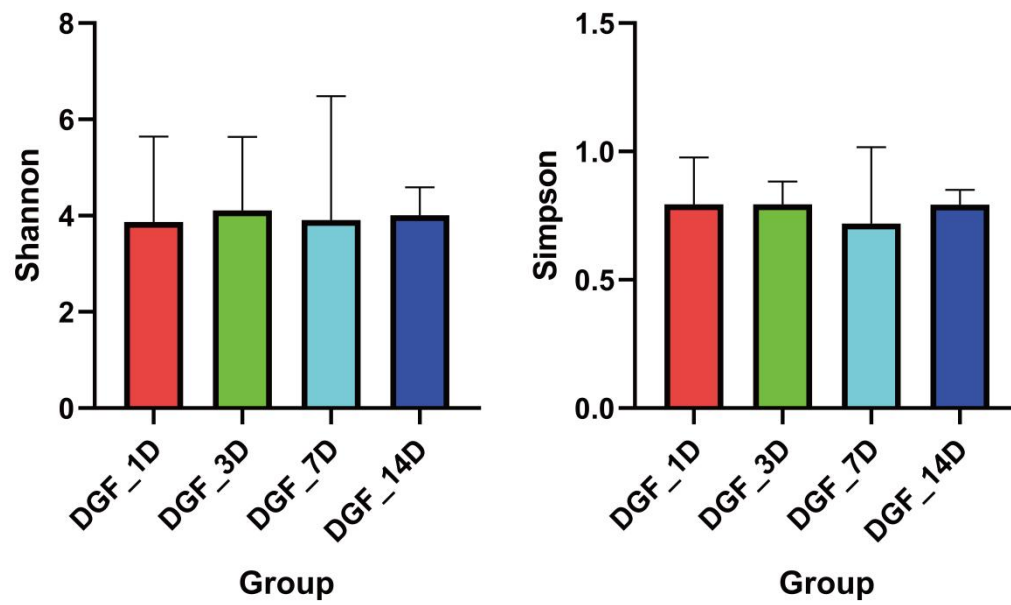
mingyz_china@csu.edu.cn

+86 133 0731 8463

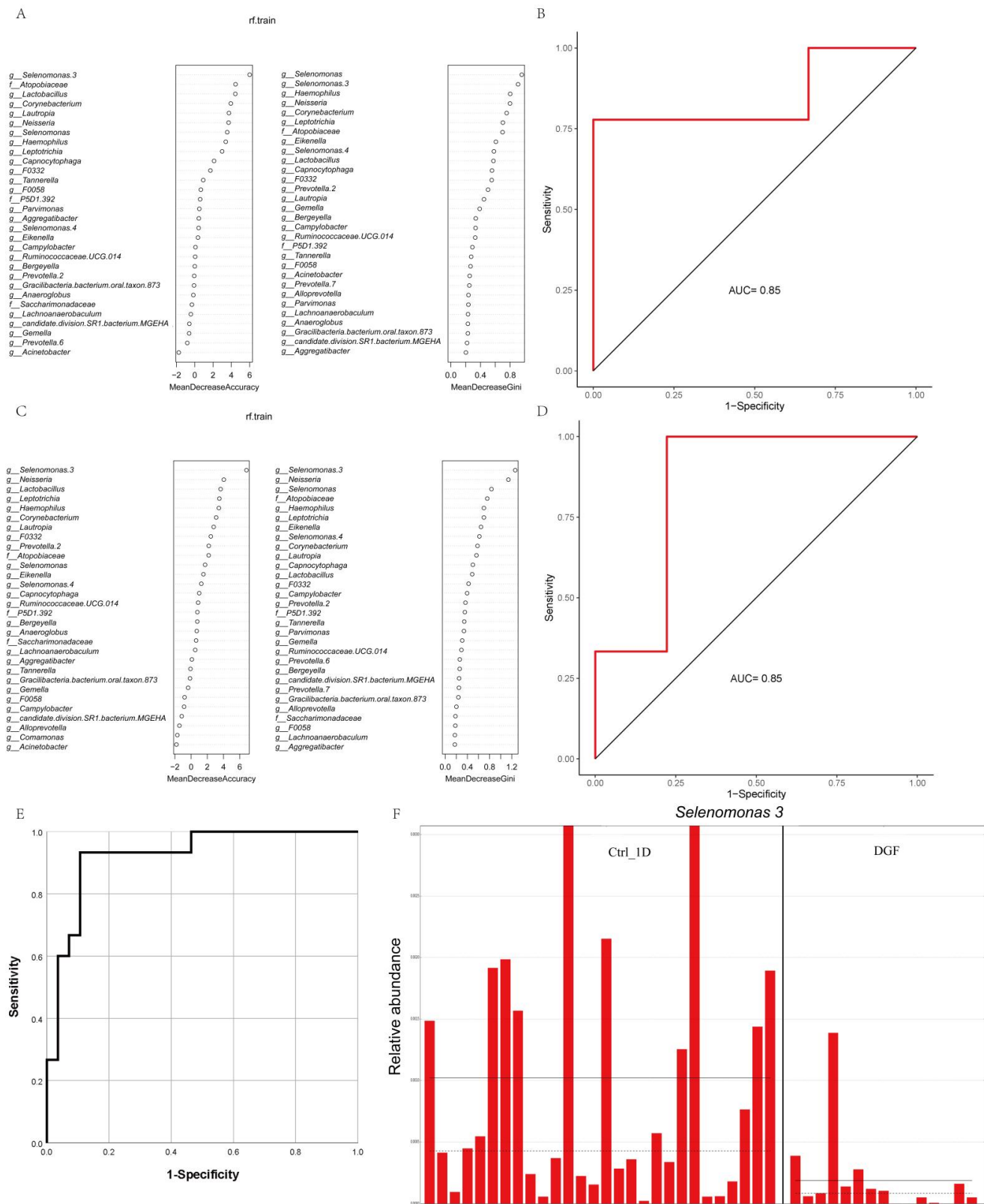
No fax numbers



Supplemental Fig. S1. The number of sample OTUs of ESRD, IGF, IGF_1D, IGF_3D, IGF_7D and IGF_14D groups: (A) The number of sample OTUs of ESRD and IGF groups; (B) The number of sample OTUs of ESRD, IGF_1D, IGF_3D, IGF_7D and IGF_14D groups.



Supplemental Fig. S2. Shannon and Simpson index of DGF_1D, DGF_3D, DGF_7D and DGF_14D: (A) Shannon index of DGF_1D, DGF_3D, DGF_7D and DGF_14D; (B) Simpson index of DGF_1D, DGF_3D, DGF_7D and DGF_14D.



Supplemental Fig. S3. The model evaluation: (A) The mean decrease accuracy and mean decrease gini of taxa in randomForest model in logarithmic form; (B) The ROC curve of randomForest model in logarithmic form; (C) The mean decrease accuracy and mean decrease gini of taxa in randomForest model in original value form; (D) The ROC curve of randomForest model in original value form; (E) The ROC curve of multivariate binary logistic regression model in original value form; (F) The relative

abundance of *Selenomonas* 3 in each samples.