



Pharmacokinetics of Oral Tebipenem Pivoxil Hydrobromide in Subjects with Various Degrees of Renal Impairment

Gina Patel,^a Keith A. Rodvold,^b Vipul K. Gupta,^c Jon Bruss,^c Leanne Gasink,^c Floni Bajraktari,^c Yang Lei,^c Akash Jain,^c Praveen Srivastava,^c Angela K. Talley^c

^aPatel Kwan Consultancy, LLC, Madison, Wisconsin, USA

^bUniversity of Illinois, Chicago, Illinois, USA

^cSpero Therapeutics, Inc., Cambridge, Massachusetts, USA

ABSTRACT Tebipenem pivoxil hydrobromide (TBP-PI-HBr) is an oral carbapenem prodrug antimicrobial agent with broad-spectrum activity that includes multidrug-resistant (MDR) *Enterobacteriales*. This study evaluated the safety, tolerability, and pharmacokinetics of TBP-PI-HBr in healthy subjects with normal renal function (cohort 1) and subjects with various degrees of renal impairment (RI [cohorts 2 to 4]) or end-stage renal disease (ESRD) receiving hemodialysis (HD) (cohort 5). Subjects in cohorts 1 to 4 received a single oral dose of TBP-PI-HBr (600 mg). Subjects in cohort 5 received single-dose administration (600 mg) in 2 separate periods: pre-HD (period 2) and post-HD (period 1). Pharmacokinetic (PK) parameters for TBP, the active moiety, were determined using noncompartmental analysis. Compared with cohort 1, the TBP plasma area under the curve (AUC) increased 1.4- to 4.5-fold among cohorts 2 to 4, the maximum concentration of drug in plasma (C_{max}) increased up to 1.3-fold and renal clearance (CL_R) decreased from 13.4 L/h to 2.4 L/h as the severity of RI increased. Plasma TBP concentrations decreased over 8 to 12 h in cohorts 1 to 4, and apparent total body clearance (CL/F) correlated ($R^2 = 0.585$) with creatinine clearance (CL_{CR}). TBP urinary excretion ranged from 38% to 64% of the administered dose for cohorts 1 to 4. Subjects in cohort 5 had an approximately 7-fold increase in TBP AUC and elimination half-life ($t_{1/2}$) versus cohort 1. After 4 h of HD, mean TBP plasma exposure decreased by approximately 40%. Overall, TBP plasma exposure increased with increasing RI, highlighting the renal route importance in TBP elimination. A dose reduction of TBP-PI-HBr may be needed in patients with RI (CL_{CR} of ≤ 50 mL/min) and those with ESRD on HD. TBP-PI-HBr was well tolerated across all cohorts. (This study has been registered at ClinicalTrials.gov under registration no. NCT04178577.).

KEYWORDS pharmacokinetics, renal impairment, tebipenem

The prodrug tebipenem pivoxil hydrobromide (TBP-PI-HBr) is an oral carbapenem antimicrobial that is rapidly converted to TBP, the active moiety, *in vivo* (1, 2). TBP has broad-spectrum activity and is active against both Gram-positive and Gram-negative organisms, similar to those of other carbapenems, which includes extended-spectrum β -lactamase (ESBL)-producing and multidrug-resistant (MDR) *Enterobacteriales* pathogens resistant to other antibiotic classes, including fluoroquinolones (3–6). TBP has demonstrated efficacy against ESBL-producing organisms in animal infection models, including the murine neutropenic thigh infection model and the murine ascending urinary tract infection (UTI) model (7, 8). Like most β -lactams, TBP exhibits time-dependent pharmacodynamics (PD), which was observed in the thigh infection model (7). Greater efficacy with TBP was observed from dosing every 8 h (q8h). The time-dependent PD have been confirmed by *in vitro* studies in the hollow fiber infection model

Copyright © 2022 Patel et al. This is an open-access article distributed under the terms of the [Creative Commons Attribution 4.0 International license](https://creativecommons.org/licenses/by/4.0/).

Address correspondence to Vipul K. Gupta, Vkumar@sperotherapeutics.com.

The authors declare a conflict of interest. Gina Patel is a principal in Patel Kwan Consultancy, LLC, and provided consulting services to Spero Therapeutics. Keith A. Rodvold is an employee of University of Illinois, Chicago, and provided consulting services to Spero Therapeutics. Leanne Gasink is a consultant to Spero Therapeutics. All other authors were paid employees of Spero Therapeutics, Cambridge, Massachusetts, USA.

Received 21 December 2021

Returned for modification 21 February 2022

Accepted 27 March 2022

Published 14 April 2022

TABLE 1 Baseline characteristics

Characteristic	eGFR (mL/min/1.73 m ²) ^a				ESRD (n = 8)
	Normal (eGFR of ≥90 [n = 7])	Mild (eGFR of 60 to <90 [n = 8])	Moderate (eGFR of 30 to <60 [n = 8])	Severe (eGFR of <30 [n = 8])	
Age, yr	62 ± 5.0	69 ± 5.4	69 ± 8.8	64 ± 9.3	58 ± 7.9
Age range, yr	56–71	62–76	52–80	53–77	42–68
Female, n (%)	3 (42.9)	3 (37.5)	4 (50.0)	6 (75.0)	6 (75.0)
Wt, kg	79.9 ± 9.4	71.7 ± 12.2	78.3 ± 12.1	81.2 ± 8.8	98.8 ± 16.0
BMI, kg/m ²	27.7 ± 2.4	26.7 ± 3.7	28.3 ± 3.8	27.3 ± 3.5	32.1 ± 4.6
Race, n (%)					
White	2 (28.6)	6 (75.0)	8 (100)	8 (100)	0
Black or African-American	5 (71.4)	2 (25.0)	0	0	8 (100)
Hispanic or Latino, n (%)	0	5 (62.5)	6 (75.0)	5 (62.5)	0
eGFR, mL/min/1.73 m ²	101 ± 8.4	73 ± 5.7	47 ± 9.5	17 ± 8.5	NA
CL _{CR} , mL/min	102.6 ± 10.4	70.5 ± 12.2	55.4 ± 20.2	24.6 ± 12.5	NA

^aResults for age, weight, body mass index (BMI), estimated glomerular filtration rate (eGFR), and creatinine clearance (CL_{CR}) are shown as mean ± standard deviation. ESRD, end-stage renal disease; NA, not applicable.

and one-compartment models (9). The hollow fiber infection model studies demonstrate that q8h dosing exhibits rapid bacterial killing with minimal selection of resistant subpopulations (9). TBP-PI-HBr has the potential to address an important unmet medical need for a new oral therapy effective in the treatment of serious bacterial infections due to MDR Gram-negative pathogens.

Carbapenems as a class are eliminated primarily by renal excretion, and as a consequence, require dosage adjustment in patients with various degrees of renal impairment (RI) (10–13). Because oral TBP-PI-HBr is eliminated primarily by renal excretion (14), similar to other carbapenems, it is expected that dosage adjustment will be needed in patients with severe RI. The U.S. Food and Drug Administration recommends a study be conducted in healthy subjects with impaired renal function when a drug is likely to be used in patients where RI is likely to alter the pharmacokinetics (PK) of the drug and/or its active metabolites (15). Thus, the primary objective of the study was to evaluate the PK, safety, and tolerability of TBP-PI-HBr in subjects with normal renal function, subjects with various degrees of renal insufficiency, and subjects with end-stage renal disease (ESRD) receiving hemodialysis (HD).

RESULTS

Overall, 39 subjects received at least one dose of TBP-PI-HBr and were included in the safety and PK populations. Baseline characteristics were generally similar across cohorts, with mean (standard deviation [SD]) age of 65 (8.5) years, mean (SD) body mass index (BMI) of 28.4 (4.0) kg/m², and 22 (56.4%) subjects were female (Table 1).

Pharmacokinetics. (i) Plasma. For cohorts 1 to 4 (see Materials and Methods), mean plasma TBP concentrations over time reached a peak within approximately 1.5 h and then declined over 8 to 12 h (Fig. 1). For cohorts 1 to 3, TBP plasma concentrations were not measurable after 16 h. In cohort 4 with severe RI, plasma concentrations were still measurable at 72 h postdose. Elimination half-life ($t_{1/2}$) and area under the curve (AUC) increased and apparent total body clearance (CL/F) decreased with increasing RI (Table 2). Apparent CL/F correlated ($R^2 = 0.585$) with creatinine clearance (CL_{CR}) for cohorts 1 to 4 (Fig. 2). Further, a correlation ($R^2 = 0.771$ and 0.712) existed between renal clearance (CL_R) and CL/F and CL_R and CL_{CR} (Fig. 2). Cohort 4 (severe RI) displayed the widest range of plasma TBP concentration-time profiles. At a CL_{CR} of <20 mL/min, the apparent CL/F of TBP was lower (mean, 3.3 L/h) than those of subjects with a CL_{CR} of ≥20 mL/min (mean, 8.0 L/h) (Table 3). In addition, TBP $t_{1/2}$ and AUC from 0 h to infinity (AUC_{0–inf}) were prolonged in subjects with a CL_{CR} of <20 mL/min compared to those in subjects with a CL_{CR} of ≥20 mL/min.

For cohort 5 (ESRD), mean plasma TBP concentrations were higher post-HD (period 1) relative to pre-HD (period 2) and measurable for up to 48 h (Fig. 1). Compared with

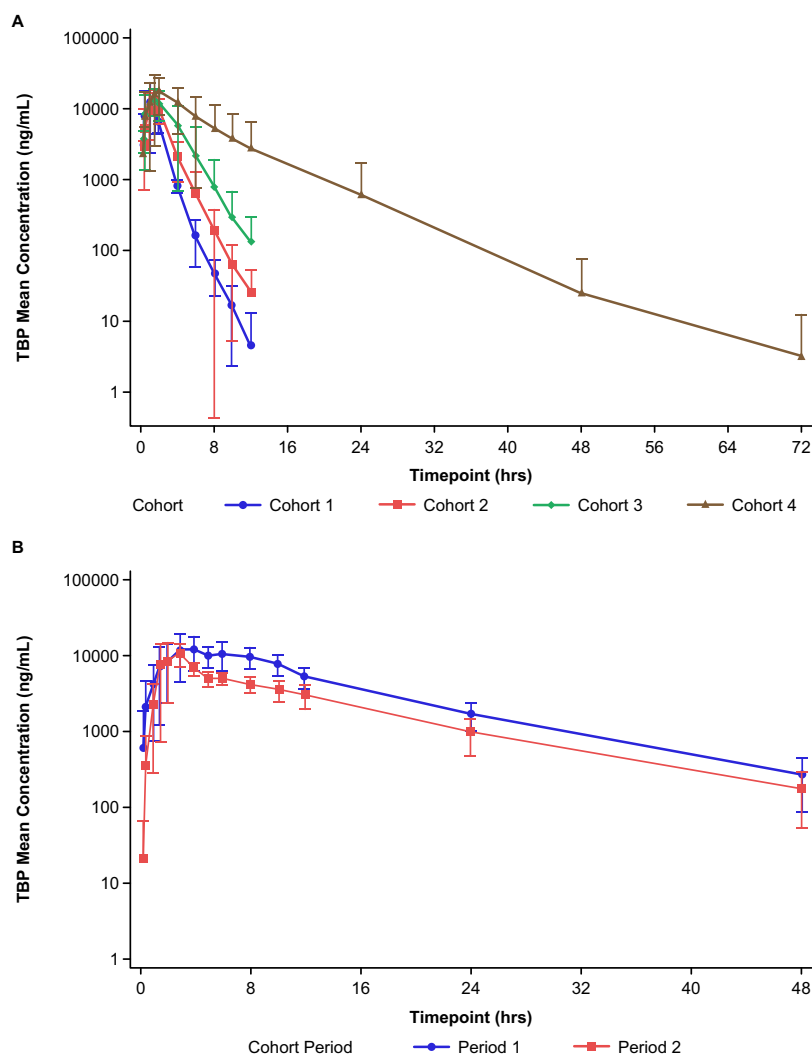


FIG 1 Plasma concentrations over time for TBP for cohorts 1 to 4 (A) and cohort 5 (B).

cohorts 1 and 2, the TBP maximum concentration in plasma (C_{max}) was comparable in cohort 5 (1.3-fold higher), but the $t_{1/2r}$, time to C_{max} (T_{max}), and AUC were 2- to 7-fold higher, and CL/F was markedly lower in both period 1 (post-dialysis) and period 2 (pre-dialysis) (Table 2). Compared to dosing in period 1, geometric mean plasma CL/F and apparent volume of distribution (V_z/F) of TBP in period 2 increased, and C_{max} and $AUC_{0-\infty}$ decreased. Elimination $t_{1/2}$ values in periods 1 and 2 were similar, and median T_{max}

TABLE 2 TBP pharmacokinetic parameters

Parameter	Result for ^a :				Cohort 5	
	Cohort 1 (normal [n = 7])	Cohort 2 (mild RI [n = 8])	Cohort 3 (moderate RI [n = 8])	Cohort 4 (severe RI [n = 8])	Period 1 (n = 8)	Period 2 (n = 8)
C_{max} ($\mu\text{g}/\text{mL}$)	14.1 (67.1)	14.8 (34.0)	18.4 (14.9)	18.8 (50.8)	14.0 (50.4)	11.7 (39.1)
T_{max} (h)	1.5 (0.5, 2.0)	1.5 (1.0, 2.0)	1.5 (0.5, 4.0)	1.5 (1.0, 4.0)	4.0 (1.5, 6.0)	3.0 (1.5, 3.0)
AUC_{0-last} ($\mu\text{g} \cdot \text{h}/\text{mL}$)	21.1 (40.2)	28.8 (37.1)	46.0 (29.4)	95.6 (75.4)	149 (35.6)	90.8 (16.3)
$AUC_{0-\infty}$ ($\mu\text{g} \cdot \text{h}/\text{mL}$)	21.2 (40.2)	28.8 (37.1)	46.2 (29.9)	95.8 (75.3)	152 (35.6)	93.0 (17.4)
$t_{1/2}$ (h)	1.1 \pm 0.23	1.2 \pm 0.14	1.3 \pm 0.15	3.6 \pm 1.8	7.9 \pm 1.9	8.0 \pm 2.1
CL/F (L/h)	21.9 (40.2)	16.1 (37.1)	10.0 (29.9)	4.83 (75.3)	3.04 (35.6)	4.97 (17.4)
V_z/F (L)	33.3 (30.0)	27.4 (36.2)	19.0 (26.7)	21.8 (45.0)	33.5 (44.2)	55.0 (22.7)

^aThe geometric mean (% coefficient of variation) is presented for C_{max} , AUC_{0-last} , $AUC_{0-\infty}$, CL/F and V_z/F . The arithmetic mean \pm SD is presented for $t_{1/2}$. The median (minimum, maximum) is reported for T_{max} .

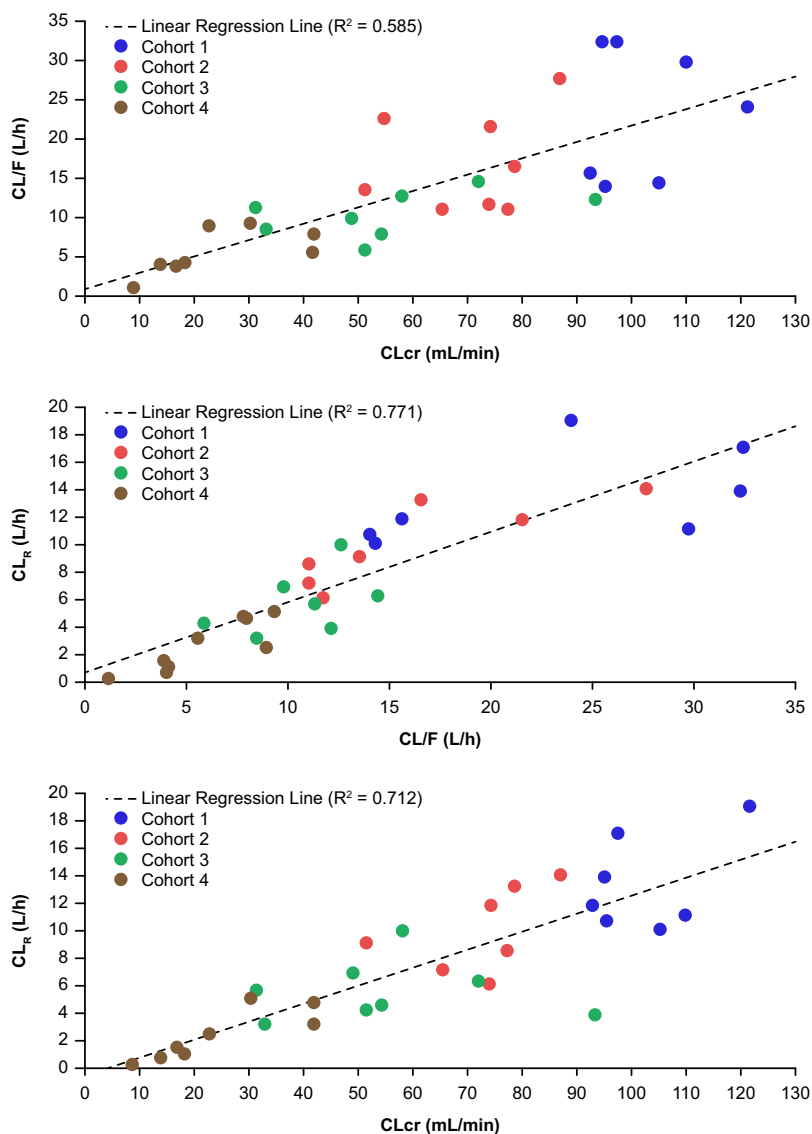


FIG 2 (Top) Apparent total body clearance versus estimated creatinine clearance, (middle) total body clearance versus renal clearance, and (bottom) renal clearance versus creatinine clearance of TBP for cohorts 1 to 4.

values were 4 h and 3 h in periods 1 and 2, respectively. During HD, mean ± SD values for extraction ratio (ER) and estimated HD clearance were 41.1% ± 3.7% and 8.6 ± 0.78 L/h, respectively.

All cohorts with RI exhibited higher exposure to TBP than healthy subjects (cohort 1), compared using an analysis of variance (ANOVA) model on log-transformed values of the C_{max} , AUC from 0 h to the time of the last quantifiable concentration (AUC_{0-last}),

TABLE 3 TBP PK parameters for cohort 4 subjects with estimated creatinine clearances of <20 mL/min and ≥20 mL/min

PK parameter	Result for cohort 4 ^a	
	CL _{CR} of <20 mL/min (n = 4)	CL _{CR} of ≥20 mL/min (n = 4)
AUC _{0-∞} (μg · h/mL)	183.0 (111.0, 389.0)	60.5 (49.4, 82.8)
t _{1/2} (h)	5.1 (4.2, 6.5)	2.0 (1.5, 2.6)
CL/F (L/h)	3.3 (1.2, 4.2)	8.0 (5.6, 9.4)
CL _R (L/h)	0.9 (0.3, 1.5)	3.9 (2.5, 5.1)

^aThe arithmetic mean (minimum, maximum) is presented. CL_{CR}, estimated creatinine clearance.

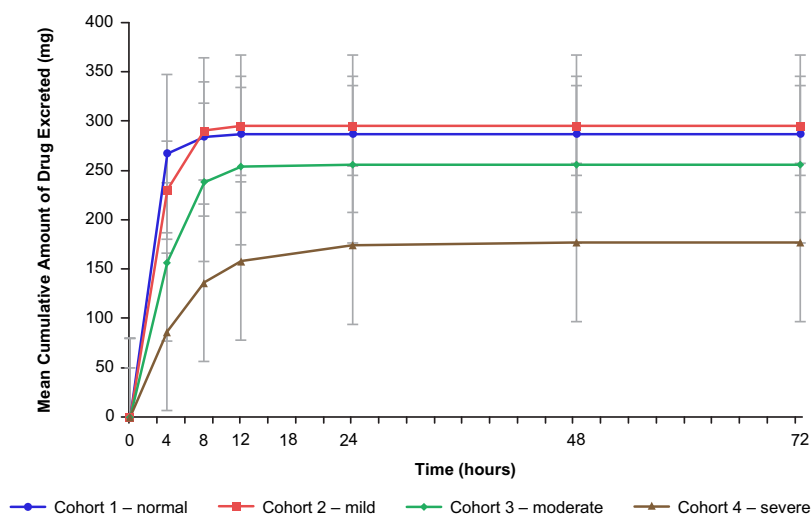


FIG 3 Mean (\pm SD) cumulative amount of TBP excreted unchanged in urine for cohorts 1 to 4.

and $AUC_{0-\infty}$. Compared to healthy subjects, geometric least squares mean ratios of $AUC_{0-\infty}$ for TBP were approximately 1.4, 2.2, and 4.5 times higher in cohorts 2, 3, and 4, respectively. C_{max} was approximately 1.3 times higher for cohorts 3 and 4 than that for healthy subjects (cohort 1). In cohort 5, after a 4-h HD session, TBP exposure (ANOVA of log-transformed $AUC_{0-\infty}$) decreased from $152.0 \mu\text{g} \cdot \text{h/mL}$ (period 1) to $92.8 \mu\text{g} \cdot \text{h/mL}$ (period 2), a mean decrease of approximately 41%. A slight decrease in C_{max} from $14.7 \mu\text{g/mL}$ to $12.3 \mu\text{g/mL}$ was observed after a 4-h HD session. These results indicate that HD was effective in clearing TBP from the systemic circulation.

(ii) Urine. Approximately 55% to 64% of the TBP equivalent administered dose of 462.4 mg was excreted in the urine for cohorts 1 through 3—mostly within the first 8 h postdose (Fig. 3). In comparison, subjects with severe renal impairment (cohort 4) had 38.3% of the TBP equivalent administered dose excreted in the urine. TBP renal clearance decreased as renal impairment increased, with the mean CL_R values ranging from 13.4 L/h to 2.4 L/h (Table 4). For cohort 4, CL_R was lower in the 4 subjects with CL_{CR} of $<20 \text{ mL/min}$ ($n = 4$; mean, 0.91 L/h; range, 0.27 to 1.53 L/h) compared to subjects with CL_{CR} of $\geq 20 \text{ mL/min}$ ($n = 4$; mean, 3.9 L/h; range, 2.5 to 5.1 L/h).

Safety/tolerability. TBP-PI-HBr was well tolerated, with 4 (10.3%) subjects reporting a total of 5 treatment emergent adverse events (TEAEs); all TEAEs were mild in severity, transient, and resolved without intervention (Table 5). Two AEs (diarrhea and abdominal pain) reported for one subject in cohort 4 were considered probably or possibly related to the study drug, respectively. No serious AEs or deaths occurred. No clinically significant abnormalities in the clinical laboratory results, electrocardiogram (ECG) findings, or physical examination were observed.

DISCUSSION

This phase 1 study evaluated the safety, tolerability, and PK of TBP-PI-HBr in healthy

TABLE 4 Excretion of TBP in urine and renal clearance for cohorts 1 to 4

PK parameter ^a	Result for:			
	Cohort 1 (normal [n = 7])	Cohort 2 (mild RI [n = 7]) ^b	Cohort 3 (moderate RI [n = 8])	Cohort 4 (severe RI [n = 8])
Ae%	62.2 \pm 17.5	63.9 \pm 11.9	55.4 \pm 17.0	38.3 \pm 16.9
Ae _u (mg)	288 \pm 81.0	295 \pm 55.0	256 \pm 78.7	177 \pm 77.9
CL _R (L/h)	13.4 \pm 3.44	10.0 \pm 3.06	5.63 \pm 2.15	2.40 \pm 1.82

^aAe%, percentage excreted of TBP equivalent dose administered; Ae_u, cumulative amount of drug excreted in urine.

^bOne subject in cohort 2 did not have a urine sample available during the first collection period (0 to 4 h postdose).

TABLE 5 Incidence of adverse events occurring in each cohort

AE ^a	No. (%) of subjects with AE				
	eGFR				
	Normal (n = 7)	Mild (n = 8)	Moderate (n = 8)	Severe (n = 8)	ESRD (n = 8)
Any treatment emergent AE	1 (14.3)	0	0	2 (25.0)	1 (12.5)
Any treatment-related AE	0	0	0	1 (12.5)	0
Abdominal pain	0	0	0	1 (12.5)	0
Arteriovenous fistula	0	0	0	0	1 (12.5)
COVID-19	1 (14.3)	0	0	0	0
Diarrhea	0	0	0	1 (12.5)	0
Presyncope	0	0	0	1 (12.5)	0

^aAE, adverse event.

subjects with normal renal function and subjects with various degrees of renal insufficiency and/or ESRD receiving HD.

TBP plasma exposure (AUC) increased significantly in subjects with RI compared to healthy subjects, while the C_{max} was approximately 1.3 times higher for subjects with moderate or severe RI compared to healthy subjects. CL_R represented approximately 50% to 58% of CL/F , and CL_R decreased as RI increased. Subjects with ESRD on HD had approximately a 7-fold increase in AUC and elimination $t_{1/2}$ for TBP compared to those with normal renal function, although C_{max} values were comparable in subjects with ESRD and healthy subjects. These results indicated that renal impairment had minimal impact on TBP C_{max} , while TBP plasma AUC increased with increasing RI due to decreased CL_R of TBP. Hemodialysis was effective in removing TBP from the circulation, with TBP exposure decreasing by approximately 41% after a HD session. TBP-PI-HBr appeared to be safe and well tolerated regardless of the degree of RI across subjects in this study.

Following a single 600-mg dose of TBP-PI-HBr, TBP T_{max} and $t_{1/2}$ in subjects with normal renal function were consistent with those previously described (14). However, in the current study, C_{max} and $AUC_{0-\infty}$ were approximately 2-fold higher, and CL/F was approximately half of that reported in the earlier study. The increased exposure (AUC and C_{max}) in the current study could be attributed to reduced renal clearance, which is often associated with advanced age, as age-matched subjects were recruited in cohort 1. The mean age of subjects in the healthy subject group in this study was 62 years, compared with 27 years in the earlier study (14).

The results observed with TBP-PI-HBr in subjects with various degrees of RI are consistent with those from other carbapenems, including doripenem, ertapenem, imipenem, and meropenem, where dosage modification is recommended for patients with severe or even moderate RI (12, 16–19). Studies with each of these drugs in subjects with RI found a prolonged half-life, decreased clearance, and increased exposure with increasing severity of RI (12, 16–19). As a result, dosage adjustments are recommended in patients with a CL_{CR} of ≤ 50 with doripenem and meropenem, a CL_{CR} of ≤ 30 or ESRD with ertapenem, or a CL_{CR} of ≤ 70 or ESRD with imipenem.

In summary, the study results characterized PK, safety, and tolerability of TBP-PI-HBr in subjects with various degrees of RI. TBP plasma AUC increased with decrease in renal function. Based on these results, a reduced dosage of TBP-PI-HBr may be needed in patients with severe RI and in patients with ESRD on HD. Population pharmacokinetic modeling of these data, along with other studies in healthy subjects and infected patients, will be used to develop dosing recommendations for patients with various degrees of renal impairment, including ESRD on HD. The safety and tolerability profile of TBP-PI-HBr was not impacted by the degree of RI in this population of otherwise healthy subjects.

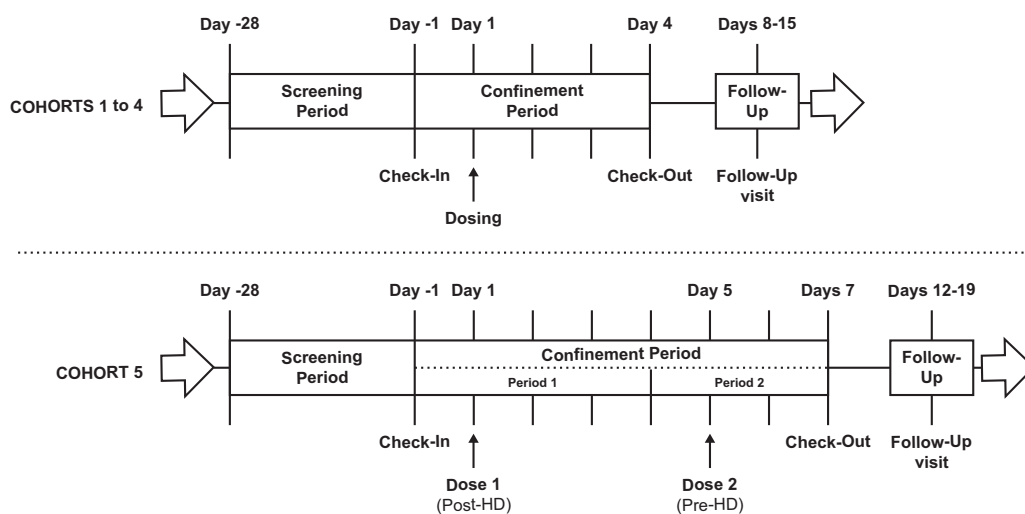


FIG 4 Study schematic.

MATERIALS AND METHODS

The study was conducted between December 2019 and September 2020 at the Division of Clinical Pharmacology at University of Miami, FL, and Orlando Clinical Research Center, Orlando, FL, in accordance with the U.S. Code of Federal Regulations and ethical principles of the Declaration of Helsinki, Good Clinical Practices, and the International Council for Harmonisation guidelines. The study protocol and all amendments were reviewed by the institutional review boards for the two study centers (IntegReview IRB and University of Miami IRB). Informed consent was obtained from each subject in writing before any study procedures were performed. This study was registered at ClinicalTrials.gov under registration no. NCT04178577.

Study design. This was a phase 1, multicenter, open-label study to assess the PK, safety, and tolerability of a single 600-mg oral dose of TBP-PI-HBr administered to adults with normal renal function and those with various degrees of renal insufficiency, including subjects with ESRD receiving HD (Fig. 4). Subjects were screened within 28 days prior to dosing. Study drug administration occurred on day 1 for cohorts 1 to 4 (normal, mild, moderate, or severe RI) and on days 1 and 5 for cohort 5 (ESRD on HD). Subjects remained confined to the clinical study unit from day -1 (1 day prior to study drug administration) until the completion of scheduled study procedures at the end of confinement on day 4 (cohorts 1 to 4) or on day 7 (cohort 5). A follow-up safety visit occurred 7 to 14 calendar days after the last dosing for all subjects.

Subjects were categorized into cohorts 1 to 4 at screening using the estimated glomerular filtration rate (eGFR) calculated with the Modification of Diet in Renal Disease (MDRD) (20) equation (Table 1). Subjects with ESRD receiving HD were assigned to cohort 5 at screening. Estimated creatine clearance (CL_{CR}) using the Cockcroft-Gault equation (21) was calculated for subjects in cohorts 1 to 4 at screening. Initially, the study allowed simultaneous enrollment in cohorts 2 to 5. After enrollment of at least 50% of subjects in cohorts 3 and 4, matched controls were enrolled in cohort 1.

On the morning of day 1, subjects in cohorts 1 to 4 received a single dose of oral TBP-PI-HBr (600 mg [two 300-mg tablets]) with 120 mL of water. Subjects in cohort 5 received a single dose of oral TBP-PI-HBr (600 mg [two 300-mg tablets]) within 2 ± 1 h after completion of regularly scheduled HD on day 1 (period 1) and a second dose approximately 1 h prior to their regularly scheduled HD on day 5 (period 2).

Subject selection. Adult men or women at least 18 years of age were eligible if they had a body mass index (BMI) of ≥ 18.5 and ≤ 39.9 kg/m² and body weight between 50.0 and 130.0 kg inclusive. Subjects had to be medically healthy without clinically significant abnormalities (cohort 1 only) or medically stable without clinically significant acute or chronic illness (cohorts 2 to 5) that could impact the assessment of PK and safety based on screening medical history, physical examination, vital signs, 12-lead electrocardiogram (ECG), and clinical laboratory testing. Subjects in cohort 1 had normal renal function (eGFR of ≥ 90 mL/min/1.73 m²), those in cohort 2 had an eGFR of 60 to <90 mL/min/1.73 m², those in cohort 3 had an eGFR of 30 to <60 mL/min/1.73 m², and those in cohort 4 had an eGFR of <30 mL/min/1.73 m². Subjects in cohort 5 with ESRD were receiving HD at least 3 times per week for at least 3 months at screening. Women were nonpregnant and nonlactating, and if not postmenopausal, they were required to use an acceptable form of contraception throughout the study and for 30 days after completion.

Matching of controls was based on a rolling pooled mean for body mass index (BMI) ($\pm 20\%$), sex (similar ratio of 1:1 ± 1), and mean age (± 10 years) observed in subjects in cohorts 3 and 4. A minimum of 2 subjects in cohort 1 and a minimum of 6 subjects in cohorts 2 to 4 collectively were to be ≥ 65 years of age.

Study assessments. Study assessments included complete physical examinations, vital, 12-lead ECG, clinical laboratory tests (hematology, biochemistry, coagulation, and urinalysis), monitoring of adverse events (AEs), and PK samplings.

Subjects in cohorts 1 to 4 had serial blood samples collected to determine plasma TBP concentrations at predose (0 h) and 0.25, 0.5, 1, 1.5, 2, 4, 6, 8, 10, 12, 24, 48, and 72 h postdose. Total voided urine was collected over a 2-h interval from -2 to 0 h (predose) and at 0 to 4, 4 to 8, 8 to 12, 12 to 24, 24 to 48, and 48 to 72 h postdose. For subjects in cohort 5, blood samples were collected on dosing days 1 and 5 predose (0 h) and 0.25, 0.5, 1, 1.5, 2, 3, 4, 5, 6, 8, 10, 12, 24, and 48 h after dosing. On day 5 (period 2), the 1-h postdose sample was collected immediately prior to dialysis, and the 5-h postdose sample was collected immediately after the end of dialysis. The 48-h postdose samples on days 3 and 7 were collected prior to the next dialysis session if scheduled on the same day. In period 2, blood samples were collected from both the inflow (arterial) and outflow (venous) lines predialysis and at approximately 1, 2, 3, and 4 h after initiation of HD on day 5. If the HD session was shorter or longer than 4 h after the start of HD, a final sample was collected at the end of dialysis. Whole-blood samples were assayed for TBP using a validated liquid chromatography tandem mass spectrometry (LC-MS/MS) method (Charles River Laboratories, Shrewsbury, MA). The lower limit of quantitation for TBP was $<0.0072 \mu\text{g/mL}$ (22). TBP blood concentrations were converted to TBP plasma concentration by correcting for the addition of (1:1) isopropyl alcohol to the sample collected and for plasmacrit (using an average value of 55%), resulting in a multiplication factor of 3.6.

Pharmacokinetic analysis. For all cohorts, the following PK parameters were calculated using non-compartmental methods based on plasma TBP concentrations: maximum observed plasma concentration (C_{max}), time to C_{max} (T_{max}), AUC from 0 h to time of last quantifiable concentration ($\text{AUC}_{0-\text{last}}$), AUC extrapolated to infinity ($\text{AUC}_{0-\infty}$), terminal elimination rate constant (λ_z), terminal elimination half-life ($t_{1/2}$), apparent total body clearance (CL/F) and apparent volume of distribution (V_z/F). For cohorts 1 to 4, the following PK parameters were calculated using noncompartmental methods based on TBP urine concentrations: fraction of drug excreted in the urine expressed as a percentage of the TBP equivalent dose administered ($\text{Ae}\%$), cumulative amount of drug excreted in urine (Ae_t), and renal clearance (CL_R). For cohort 5 (period 2), the extraction ratio (ER), estimated hemodialysis clearance (CL_{HD}), and the amount of the dose removed by hemodialysis (X_{HD}) were assessed. The ER was calculated as $100 \times [(CA-CV)/CA]$, where CA and CV were predialyzer and postdialyzer paired drug concentrations at the arterial and venous sites. TBP clearance during HD (CL_{HD}) was calculated using the following equation: $\text{CL}_{\text{HD}} = Q \times \text{ER}$, where Q was the known blood flow through the dialyzer. The amount of TBP removed by dialysis (X_{HD}) was estimated by multiplying the AUC during dialysis (i.e., AUC from the beginning of dialysis to end of dialysis [$\text{AUC}_{\text{on-HD}}$]) by CL_{HD} : $X_{\text{HD}} = \text{AUC}_{\text{on-HD}} \times \text{CL}_{\text{HD}}$. Under the assumptions that conversion to TBP is 100% and is instantaneous at time zero, dose-dependent PK parameters such as CL/F and V_z/F were calculated for TBP in terms of TBP-PI-HBr equivalents (i.e., 600 mg of TBP-PI-HBr = 462.37 mg of TBP). All PK evaluations were performed using Phoenix 64 WinNonlin version 8.2 (Pharsight Corporation, Mountain View, CA, USA).

Statistical analysis. A sample size of 8 subjects per cohort was considered sufficient to provide adequate data for inclusion into a PK analysis (15). Eight subjects were recruited in each cohort to ensure at least 6 evaluable subjects per cohort. Subjects who did not complete critical study procedures could be replaced.

Mean and individual plasma concentration-time curves were tabulated for each cohort (and for cohort 5 subjects by period). Pharmacokinetic parameters were determined for each subject and summarized by cohort (and for cohort 5 subjects by period) using descriptive statistics (arithmetic means, SD, coefficients of variation, sample size [n], minimum, maximum, and median). In addition, geometric means were calculated for AUC and C_{max} .

For estimation of PK parameters for RI subjects (cohorts 2 to 5) compared to healthy subjects with normal renal function (cohort 1), an analysis of variance (ANOVA) model was used with log-transformed values of $\text{AUC}_{0-\text{last}}$, $\text{AUC}_{0-\infty}$, C_{max} , and CL/F as the response variables and with the fixed-effect term of cohort as a categorical variable. The estimated mean difference and associated 90% confidence interval (CI) were calculated for each RI group (versus healthy subjects) and were then back-transformed to provide geometric mean ratios and 90% CIs for each comparison. In addition, periods 1 and 2 for cohort 5 were compared to assess the effect of HD. For this analysis, data for cohort 5 from both period 1 and period 2 (before HD) were used and were considered separately in the categorical analysis.

To evaluate the effect of dialysis on TBP, log-transformed PK parameters ($\text{AUC}_{0-\text{last}}$, $\text{AUC}_{0-\infty}$, C_{max} , and CL/F) obtained with dosing before HD (test) versus dosing after HD (reference) in ESRD subjects were evaluated using an ANOVA model with period as the factor, body weight at the baseline, age, and sex as covariates, and subject as the random effect. A two-sided 90% CI for the estimated ratio of the effect of dialysis (using the period effect) was calculated for all PK parameters ($\text{AUC}_{0-\text{last}}$, $\text{AUC}_{0-\infty}$, C_{max} , and CL/F). The ratio of the geometric means and their CI was obtained by back-transforming the estimated mean difference and its corresponding CI. All statistical evaluations were conducted using SAS version 9.1.3.

ACKNOWLEDGMENTS

We acknowledge the editorial assistance of Richard S. Perry in the preparation of the manuscript, which was supported by Spero Therapeutics, Cambridge, Massachusetts, USA. We acknowledge Charles River Laboratories (bioanalysis), Gary Maier (clinical pharmacology consulting), and Aaron Dane (biostatistical consulting), for their help and support in this study. We thank all the participating subjects and Myriah Satterfield, Patricia Warfel, Anne Marie Phelan, Emily Stone, and Susannah Walpole, who were

employees of Spero Therapeutics at the time of this study. Richard Preston (Division of Clinical Pharmacology, University of Miami, Miami, FL) and Thomas Marbury (Orlando Clinical Research Center, Orlando, FL) were the principal investigators for the study.

All authors were involved in data analysis and interpretation, and all authors reviewed the manuscript for critical content and approved the final version for submission.

Gina Patel is a principal in Patel Kwan Consultancy, LLC, and provided consulting services to Spero Therapeutics. Keith A. Rodvold is an employee of University of Illinois, Chicago, and provided consulting services to Spero Therapeutics. Leanne Gasink is a consultant to Spero Therapeutics. All other authors were paid employees of Spero Therapeutics, Cambridge, Massachusetts, USA.

This study was supported by Spero Therapeutics, Cambridge, Massachusetts, USA.

REFERENCES

- Jain A, Utley L, Parr TR, Zabawa T, Pucci MJ. 2018. Tebipenem, the first oral carbapenem antibiotic. *Expert Rev Anti Infect Ther* 16:513–522. <https://doi.org/10.1080/14787210.2018.1496821>.
- Rubio A, Pucci MJ, Jain A. 2018. Characterization of SPR994, an orally available carbapenem, with activity comparable to intravenously administered carbapenems. *ACS Infect Dis* 4:1436–1438. <https://doi.org/10.1021/acscinfed.8b00188>.
- Arends SJR, Rhomberg PR, Cotroneo N, Rubio A, Flamm RK, Mendes RE. 2019. Antimicrobial activity evaluation of tebipenem (SPR859), an orally available carbapenem, against a global set of Enterobacteriaceae isolates, including a challenge set of organisms. *Antimicrob Agents Chemother* 63:e02618-18. <https://doi.org/10.1128/AAC.02618-18>.
- Cotroneo N, Rubio A, Critchley IA, Pillar C, Pucci MJ. 2020. *In vitro* and *in vivo* characterization of tebipenem, an oral carbapenem. *Antimicrob Agents Chemother* 64:e02240-19. <https://doi.org/10.1128/AAC.02240-19>.
- Critchley IA, Cotroneo N, Pucci MJ, Jain A, Mendes RE. 2020. Tebipenem: an oral carbapenem with activity against multi-drug resistant urinary tract infection isolates of *Escherichia coli* collected from US medical centers during 2019. *Open Forum Infect Dis* 7(Suppl 1):S831. <https://doi.org/10.1093/ofid/ofaa439.1873>.
- Lacasse E, Brouillette E, Larose A, Parr TR, Jr, Rubio A, Malouin F. 2019. *In vitro* activity of tebipenem (SPR859) against penicillin-binding proteins of Gram-negative and Gram-positive bacteria. *Antimicrob Agents Chemother* 63:e02181-18. <https://doi.org/10.1128/AAC.02181-18>.
- McEntee L, Johnson A, Farrington N, Unsworth J, Dane A, Jain A, Cotroneo N, Critchley I, Melnick D, Parr T, Ambrose PG, Das S, Hope W. 2019. Pharmacodynamics of tebipenem: new options for oral treatment of multidrug-resistant Gram-negative infections. *Antimicrob Agents Chemother* 63:e00603-19. <https://doi.org/10.1128/AAC.00603-19>.
- Van Scoy Fikes S, Rubino CM, Bhavnani SM, Cotroneo N, Critchley IA, Parr TR, Ambrose PG. 2020. Characterization of tebipenem pivoxil hydrobromide pharmacokinetics-pharmacodynamics (PK/PD) in a neutropenic murine acute pyelonephritis (AP) model. *Open Forum Infect Dis* 7(Suppl):S666. <https://doi.org/10.1093/ofid/ofaa439.1487>.
- Johnson A, Farrington N, McEntee L, Kirby A, Melnick D, Rubio A, Utley L, Parr T, Hope W, Das S. 2018. Pharmacokinetics and pharmacodynamics of tebipenem (SPR859) for multi-drug resistant Enterobacteriaceae in a hollow fibre infection model, poster L2. ESCMID ASM, 2018. Lisbon, Portugal. <https://sperotherapeutics.com/presentation/pharmacokinetics-and-pharmacodynamics-of-tebipenem-spr859-for-multidrug-resistant-enterobacteriaceae-in-a-hollow-fibre-infection-model/?msclkid=63ddf16ab4f911ecb477d9539d3d3b74>.
- Christensson BA, Nilsson-Ehle I, Hutchison M, Haworth SJ, Oqvist B, Norrby SR. 1992. Pharmacokinetics of meropenem in subjects with various degrees of renal impairment. *Antimicrob Agents Chemother* 36:1532–1537. <https://doi.org/10.1128/AAC.36.7.1532>.
- Floren LC, Wikler MA, Kilfoil T, Ge Y. 2004. A phase 1 open-label controlled study to evaluate the safety, tolerability, and pharmacokinetics (PK) of doripenem (DOR) administered intravenously to subjects with renal impairment, abstr A-17. Abstr 44th Intersci Conf Antimicrob Agents Chemother. American Society for Microbiology, Washington, DC.
- Mistry GC, Majumdar AK, Swan S, Sica D, Fisher A, Xu Y, Hesney M, Xi L, Wagner JA, Deutsch PJ. 2006. Pharmacokinetics of ertapenem in patients with varying degrees of renal insufficiency and in patients on hemodialysis. *J Clin Pharmacol* 46:1128–1138. <https://doi.org/10.1177/0091270006291839>.
- Verpooten GA, Verbist L, Buntinx AP, Entwistle LA, Jones KH, De Broe ME. 1984. The pharmacokinetics of imipenem (thienamycin-formamidine) and the renal dehydropeptidase inhibitor cilastatin sodium in normal subjects and patients with renal failure. *Br J Clin Pharmacol* 18:183–193. <https://doi.org/10.1111/j.1365-2125.1984.tb02451.x>.
- Eckburg PB, Jain A, Walpole S, Moore G, Utley L, Manyak E, Dane A, Melnick D. 2019. Safety, pharmacokinetics, and food effect of tebipenem pivoxil hydrobromide after single and multiple ascending oral doses in healthy adult subjects. *Antimicrob Agents Chemother* 63:e00618-19. <https://doi.org/10.1128/AAC.00618-19>.
- Center for Drug Evaluation and Research. 2020. Pharmacokinetics in patients with impaired renal function—study design, data analysis, and impact on dosing and labeling. <https://www.fda.gov/regulatory-information/search-fda-guidance-documents/pharmacokinetics-patients-impaired-renal-function-study-design-data-analysis-and-impact-dosing-and>.
- Cirillo I, Vaccaro N, Castaneda-Ruiz B, Turner K, Redman R. 2008. Pharmacokinetics of doripenem in subjects with varying degrees of renal impairment, abstr A-1886. Abstr 48th Intersci Conf Antimicrob Agents Chemother (ICAAC)-Infect Dis Soc Am (IDSA) 46th Annu Meet. American Society for Microbiology and Infectious Diseases Society of America, Washington, DC.
- Gibson TP, Demetriades JL, Bland JA. 1985. Imipenem/cilastatin: pharmacokinetic profile in renal insufficiency. *Am J Med* 78:54–61. [https://doi.org/10.1016/0002-9343\(85\)90102-0](https://doi.org/10.1016/0002-9343(85)90102-0).
- Nicolau DP. 2008. Pharmacokinetic and pharmacodynamic properties of meropenem. *Clin Infect Dis* 47(Suppl 1):S32–S40. <https://doi.org/10.1086/590064>.
- Nix DE, Majumdar AK, DiNubile MJ. 2004. Pharmacokinetics and pharmacodynamics of ertapenem: an overview for clinicians. *J Antimicrob Chemother* 53(Suppl 2):ii23–ii28. <https://doi.org/10.1093/jac/dkh205>.
- Cockcroft DW, Gault MH. 1976. Prediction of creatinine clearance from serum creatinine. *Nephron* 16:31–41. <https://doi.org/10.1159/000180580>.
- Levey AS, Bosch JP, Lewis JB, Greene T, Rogers N, Roth D, Modification of Diet in Renal Disease Study Group. 1999. A more accurate method to estimate glomerular filtration rate from serum creatinine: a new prediction equation. *Ann Intern Med* 130:461–470. <https://doi.org/10.7326/0003-4819-130-6-199903160-00002>.
- Srivastava P, Manyak E, Utley L, Gupta V. 2021. A validated sensitive and selective ultra-high performance liquid chromatography-tandem mass spectrometry (UPLC-MS/MS) method for quantitative analysis of tebipenem pivoxil and tebipenem, in human whole blood and its application in a pharmacokinetic study in healthy human volunteers. 15th WRIB Virtual Meeting. CFABS, Montreal, Canada.