



# High-resolution melting (HRM) curve analysis as a potential tool for the identification of earthworm species and haplotypes

Anna Vaupel<sup>\*</sup>, Bernd Hommel and Lukas Beule<sup>\*</sup>

Julius Kühn Institute (JKI)—Federal Research Centre for Cultivated Plants, Institute for Ecological Chemistry, Plant Analysis and Stored Product Protection, Berlin, Germany

<sup>\*</sup>These authors contributed equally to this work.

## ABSTRACT

**Background.** Earthworm communities are an important component of soil biodiversity and contribute to a number of ecosystem functions such as soil-nutrient cycling. Taxonomic identification is an essential requirement to assess earthworm biodiversity and functionality. Although morphological identification of species is labour-intensive, it is the most commonly used method due to a lack of cost-efficient alternatives. Molecular approaches to identify earthworms at species and haplotype level such as DNA barcoding are gaining popularity in science but are rarely applied in practice. In contrast to barcoding, the differentiation of PCR products based on their thermal denaturation properties using high-resolution melting (HRM) curve analysis is a fast and cost-efficient molecular closed-tube, post-PCR tool that allows identification of taxa.

**Methods.** We developed a HRM curve assay to identify eight earthworm species common to agricultural soils in Central Europe (*Allolobophora chlorotica*, *Aporrectodea caliginosa*, *Apo. limicola*, *Apo. longa*, *Apo. rosea*, *Lumbricus castaneus*, *L. rubellus*, and *L. terrestris*). For this, a new primer pair targeting a 158-bp long subregion of the cytochrome c oxidase I (COI) gene was designed. Our HRM assay was further tested for the differentiation of COI haplotypes using 28 individuals of the earthworm species *Allo. chlorotica*. Furthermore, we developed a novel extraction method for DNA from earthworm tissue that is fast and requires minimal consumables and laboratory equipment.

**Results.** The developed HRM curve assay allowed identifying all eight earthworm species. Performing the assay on 28 individuals of the earthworm species *Allo. chlorotica* enabled the distinction among different COI haplotypes. Furthermore, we successfully developed a rapid, robust, scalable, and inexpensive method for the extraction of earthworm DNA from fresh or frozen tissue.

**Conclusions.** HRM curve analysis of COI genes has the potential to identify earthworm species and haplotypes and could complement morphological identification, especially for juvenile or damaged individuals. Our rapid and inexpensive DNA extraction method from earthworm tissue helps to reduce the costs of molecular analyses and thereby promote their application in practice.

Submitted 19 April 2022

Accepted 10 June 2022

Published 28 June 2022

Corresponding author

Lukas Beule,  
lukas.beule@julius-kuehn.de

Academic editor

Craig Moyer

Additional Information and  
Declarations can be found on  
page 10

DOI 10.7717/peerj.13661

© Copyright  
2022 Vaupel et al.

Distributed under  
Creative Commons CC-BY 4.0

OPEN ACCESS

**Subjects** Agricultural Science, Biodiversity, Ecology, Molecular Biology, Zoology

**Keywords** High-resolution melting (HRM) curve analysis, Earthworm identification, Earthworm taxonomy, COI, Real-time PCR, Species, Haplotypes

## INTRODUCTION

Soil meso- and macrofauna is a substantial part of soil biodiversity and contributes to key ecosystem functions such as nutrient cycling (e.g., [Reichle, 1977](#)) and digestion of pathogens (e.g., [Friberg, Lagerlöf & Rämert, 2005](#); [Sofo, Mininni & Ricciuti, 2020](#)). Earthworms are important members of the soil faunal community and involved in multiple beneficial ecosystem functions. For example, earthworms contribute to the decomposition of organic material (e.g., [Cortez, 1998](#)) and interact with beneficial as well as phytopathogenic soil microorganisms (e.g., [Doube et al., 1994](#)). Earthworms can also serve as an indicator for soil health ([Linden et al., 1994](#)). Abundance, biomass and species diversity are common measures to characterize earthworm populations and their potential functions in the soil ecosystem. According to their ecology, earthworms can also be classified into three different major ecological groups (i.e., anecic, endogeic and epigeic species). Recently, however, the suitability of these widely accepted three groups to reflect the functions of earthworms was questioned. [Bottinelli & Capowiez \(2021\)](#) suggested that the seven categories proposed by [Bouché \(1972\)](#) should be used instead. In addition to functional classification, taxonomic identification is an essential prerequisite for the assessment of earthworm biodiversity.

Identification of species by their morphology using regional identification keys (e.g., [Graff, 1953](#); [Stöp-Bowitz, 1969](#); [Bouché, 1972](#); [Ljungström, 1970](#); [Sims & Gerard, 1985](#)) is still the most common technique applied in current earthworm surveys (e.g., [Pérès et al., 2011](#); [Tsiafouli et al., 2015](#); [Ashwood et al., 2019](#)). The main advantages of this method are its low costs and few required equipment. Additionally, morphological identification of worms can be done non-invasive (i.e., individuals can be released following examination), provided the worms are not stored in preservative agents (e.g., ethanol). Depending on the identification key as well as the required accuracy, even citizen science approaches are possible, enabling larger surveys at low costs. Such approaches, however, are often limited to identification at genus level or ecological/morphological groups (e.g., [Stroud, 2019](#); [Billaud, Vermeersch & Porcher, 2021](#)). Therefore, they are only suitable for certain research questions. Even if morphological identification is carried out by trained specialists, identification of juveniles or damaged tissue is often not possible, consequently leading to their exclusion in surveys ([Richard et al., 2010](#)).

DNA barcoding of taxonomically informative loci such as cytochrome c oxidase I (COI) genes is a popular molecular approach for the identification of metazoa ([Hebert et al., 2003](#)). COI is the dominating marker gene for metazoa and efforts were undertaken to build databases for COI sequencing data. For example, in 2005, The Barcode of Life Data Systems (BOLD) was launched to acquire, store, and analyze COI gene sequence data ([Ratnasingham & Hebert, 2007](#)). The potential of DNA barcoding for the identification of earthworms has been pointed out over a decade ago ([Huang et al., 2007](#)), but is still rarely used in practice (e.g., [Rutgers et al., 2016](#)). [Richard et al. \(2010\)](#) highlighted that DNA

barcoding enables identification of earthworms at all life stages, including juveniles, which has the potential to re-integrate juvenile individuals in earthworm studies and reduce possible identification bias.

High-resolution melting (HRM) curve analysis is a rapid and cost-effective tool, apart from the cost-intensive basic equipment, that allows differentiation among PCR products that differ by as little as one base pair. In this post-PCR technique, PCR products are differentiated by their thermal denaturation properties; their so-called “melting behaviour”. For this, the PCR product is heated stepwise (commonly 0.1 or 0.2 ° C per step) and the dissociation of the double-stranded DNA is quantified after every step using a fluorescent DNA-intercalating dye. Amplification and subsequent HRM curve analysis are commonly performed in a real-time PCR thermocycler. The main fields of application are genotyping and the detection of mutations. Analysis of HRM curves is successfully used in molecular diagnostics to distinguish clinically relevant bacteria (e.g., [Naze et al., 2015](#)), fungi (e.g., [Fidler et al., 2016](#)), and viruses (e.g., [Lin et al., 2008](#)). Furthermore, HRM curve analysis can serve as an alternative tool to DNA barcoding for the taxonomic identification and differentiation of species (e.g., [Ngui, Lim & Chua, 2012](#)). The analysis of HRM curves can also be used to identify invertebrates such as mosquitos ([Ajamma et al., 2016](#)), oysters ([Wang et al., 2014](#)), and nematodes ([Skorpikova et al., 2020](#)) as well as vertebrates ([Ouso et al., 2020](#)). Recently, the potential of HRM curve analysis for the differentiation of cryptic earthworm species was shown by [Baudrin et al. \(2020\)](#), who performed DNA barcoding and HRM analysis on a subregion of the 16S rRNA gene of the earthworm species *Allolobophora chlorotica*.

This work aimed to (i) demonstrate the potential of HRM curve analysis of the COI gene for the distinction of earthworm species and haplotypes common to agricultural soils in Central Europe and (ii) develop a rapid and inexpensive extraction method for DNA from earthworm tissue to reduce the costs for molecular analyses.

## MATERIALS & METHODS

### Reference earthworm material

Earthworm species common to agricultural soils in Central Europe were identified utilizing the Edaphobase database ([Burkhardt et al., 2014](#)). Eight agriculturally relevant species were selected (*Allolobophora chlorotica*, *Aporrectodea caliginosa*, *Apo. limicola*, *Apo. longa*, *Apo. rosea*, *Lumbricus castaneus*, *L. rubellus*, and *L. terrestris*) covering 87.6% of all database entries. Morphologically identified reference material of all eight species sampled in agricultural soils in Germany was kindly provided by Dr. Stefanie Krück. Total DNA was extracted using Qiagen’s DNeasy<sup>®</sup> Blood & Tissue extraction kit (Qiagen N.V., Hilden, Germany) according to the manufacturers’ instructions. The extracts were checked on 1.7% (w/v) agarose gels stained with SYBR Green I. Prior to amplification, extracts were diluted 1:50 (v/v) in double-distilled H<sub>2</sub>O (ddH<sub>2</sub>O). For the identification of different haplotypes, DNA from 28 morphological identified individuals of *Allo. chlorotica* collected in October 2021 at an agricultural field near Otterndorf, Germany (53°48′32.69″N, 8°54′2.45″E) was extracted using a cetyltrimethylammonium bromide (CTAB)-based protocol as per

**Table 1** Primer used for high-resolution melting (HRM) curve analysis.

Primer name	Primer sequence (5'–3')	Source
EW_COI_F1	CATG CATT YGTD ATAA TYTT CTT	This study
EW_COI_F2	GTVT TYAT YGGN GGNT TYGG AAA	This study
EW_COI_F3	ATRG TDGG DGCH GGWA TRAG	This study
EW_COI_R1	CCDG THCC DGCN CCYT TTTC	This study
EW_COI_R2	AGAA TNAG NGAD GGRG GNAR NA	This study
EW_COI_R3	GADG CWCC HGCY ARRT GDAR DGA	This study
16S-Ac-F1	CTAAATTCTGACCCTTATTC	King et al. (2010)
WORM-16S-R1	CCTAAGCCAACATCGAGGTG	King et al. (2010)
COI-AI-F2	TGGCTTCTACCTCTAATACT	King et al. (2010)
COI-AI-R2	ATGAAGGGAGAAGATGGCCA	King et al. (2010)

Brandfass & Karlovsky (2008). Extracts were checked on 1.7% agarose gels and diluted 1:50 prior to PCR as described above.

### Rapid extraction method of DNA from earthworm tissue

We developed a rapid, robust, and inexpensive extraction method to extract amplifiable DNA from earthworm tissue. The protocol was tested using earthworm tissue of *Allo. chlorotica*, *Apo. caliginosa*, and *L. terrestris*. Fresh or frozen earthworm tissue (approx. 2 × 5 mm tissue) was placed in 1.5 mL tubes containing 50 μL ddH<sub>2</sub>O and two spatula tips of glass beads (Ø250–300 μm). The tissue was ground within the tube for 10 s using a sterile plastic micropestle and incubated at 70 °C for 10 min. Following incubation, the tube was centrifuged at 10,000 × g for 1 min and the supernatant was transferred into a new 1.5 mL tube. The supernatant was diluted 1:10 (v/v) in ddH<sub>2</sub>O prior to PCR.

### Primer design for HRM curve analysis

We designed three forward and three reverse primers (Table 1) targeting different subregions of the COI gene. Reference sequences of all eight earthworm species were obtained from NCBI's GenBank (accession numbers are given in Fig. S1) and aligned in MEGA version 11.0.10 (Kumar, Stecher & Tamura, 2016) using ClustalW (Thompson, Higgins & Gibson, 1994). Primers were designed manually by selecting suitable primer binding sites (Fig. S1 for primer pair EW\_COI\_F2 and EW\_COI\_R1, Fig. S2 for all primer) within the COI genes under consideration of potential dimerization, melting temperature, and degeneracy of the designed primers as well as sequence heterogeneity among species.

### Development of HRM curve assay

Morphologically identified reference DNA material of all eight earthworm species was amplified using nine different primer combinations (Table 2). Amplifications were carried out in a CFX 384 Thermocycler (Biorad, Rüdigenheim, Germany) in 384-well microplates in 4 μL reaction volumes consisting of ddH<sub>2</sub>O; buffer (10 mM Tris-HCl, 50 mM KCl, 2.5 mM MgCl<sub>2</sub>, pH 8.3 at 25 °C); 125 μM of each deoxynucleoside triphosphate (Bioline, Luckenwalde, Germany); 0.3 μM of each EW\_COI primer (Table 1); 1 μg μL<sup>-1</sup> bovine serum albumin; 0.5 μM EvaGreen<sup>®</sup> solution (Jena Bioscience, Jena, Germany); 0.03 u μL<sup>-1</sup>

**Table 2** Primer combinations tested in this study and their PCR product length.

Primer combination	PCR product length (bp)
EW_COI_F1 × EW_COI_R1	194
EW_COI_F1 × EW_COI_R2	287
EW_COI_F1 × EW_COI_R3	152
EW_COI_F2 × EW_COI_R1	158
EW_COI_F2 × EW_COI_R2	251
EW_COI_F2 × EW_COI_R3	116
EW_COI_F3 × EW_COI_R1	293
EW_COI_F3 × EW_COI_R2	386
EW_COI_F3 × EW_COI_R3	251

Hot Start Taq DNA Polymerase (New England Biolabs, Beverly, Massachusetts, USA) and 1  $\mu$ L template DNA or ddH<sub>2</sub>O for negative controls. Thermocycling conditions for all nine primer combinations were as follows: Initial denaturation for 120 s at 95 °C followed by 40 cycles of denaturation for 20 s at 95 °C, annealing for 30 s at 55 °C, and elongation for 30 s at 68 °C. Final elongation was performed for 5 min at 68 °C. Following amplification, PCR products were heated to 95 °C for 60 s, cooled to 65 °C for 60 s, followed by a stepwise temperature increase from 65 °C to 95 °C by 0.1 °C per step with continuous fluorescence measurement to generate HRM curves.

Since a clear distinction between *Apo. caliginosa* and *Apo. longa* was not achieved by the optimized HRM curve assay (see *HRM curve analysis of earthworms*), we expanded a previously described multiplex PCR assay (King *et al.*, 2010) for these two species by the generation of melting curves. Briefly, a 116 bp subregion of the 16S rRNA gene of *Apo. caliginosa* was amplified using the primer pair 16S-Ac-F1 and WORM-16S-R1 or a 213 bp subregion of the COI gene of *Apo. longa* using the primer pair COI-Al-F2 and COI-Al-R2 (Table 1). The composition of the reaction volume as well as the thermocycling conditions were identical to those described above except that four primers were used.

Furthermore, we aimed to test the suitability of our optimized HRM curve assay for the identification of different COI haplotypes. For this, HRM curve analysis was performed on different COI haplotypes across 28 individuals of *Allo. chlorotica* using the primer pair EW\_COI\_F2 and EW\_COI\_R1. The composition of the reaction volume as well as the thermocycling conditions were identical to those described for the HRM curve analysis of all eight earthworm species above. To confirm the findings from HRM curve analysis of potentially different haplotypes, COI genes of all 28 individuals of *Allo. chlorotica* were sequenced as described below (see *Sanger sequencing of the COI region of Allolobophora chlorotica*).

### Sanger sequencing of the COI region of *Allolobophora chlorotica*

The COI gene of 28 individuals of *Allo. chlorotica* was amplified using the primer set LCO1490 (GGTCAACAAATCATAAAGATATTGG) and HC02198 (TAAACTTCAGGGT-GACCAAAAATCA) (Folmer *et al.*, 1994). Amplifications were carried out in an

Eppendorf Mastercycler EP Gradient S thermocycler (Eppendorf, Hamburg, Germany) in 200  $\mu\text{L}$  PCR tubes in 15  $\mu\text{L}$  reaction volumes consisting of ddH<sub>2</sub>O; buffer (20 mM Tris-HCl, 10 mM (NH<sub>4</sub>)<sub>2</sub>SO<sub>4</sub>, 10 mM KCl, 2 mM MgSO<sub>4</sub>, 0.1% Triton<sup>®</sup> X-100, pH 8.8 at 25 °C); 125  $\mu\text{M}$  of each deoxynucleoside triphosphate (Bioline, Luckenwalde, Germany); 0.3  $\mu\text{M}$  of each primer (LCO 1490 and HCO2198); 1  $\mu\text{g } \mu\text{L}^{-1}$  bovine serum albumin; 0.03  $\mu\text{L}^{-1}$  Taq DNA Polymerase (New England Biolabs, Beverly, MA, USA) and 1  $\mu\text{L}$  template DNA or ddH<sub>2</sub>O for negative controls. Thermocycling conditions were as follows. Initial denaturation for 120 s at 95 °C followed by 40 cycles of denaturation for 20 s at 95 °C, annealing for 30 s at 55 °C, and elongation for 60 s at 68 °C. Final elongation was performed for 5 min at 68 °C. Following amplification, PCR products were loaded on 1.7% agarose gels, bands of the expected product size were excised from the gel, and extracted utilizing the FastGene Gel/PCR Extraction Kit (Nippon Genetics Europe GmbH, Düren, Germany) according to the manufacturer's instructions. Extracts were diluted 1:50 (v/v) in ddH<sub>2</sub>O and re-amplified as described above. Re-amplified PCR products were purified using isopropanol as described previously (*Beule et al., 2017*), quantified using a spectrophotometer (BioPhotometer plus, Eppendorf, Hamburg, Germany), and subjected to Sanger sequencing at the facilities of LGC Genomics (Berlin, Germany). The quality of the obtained sequences was checked manually and sequences were aligned in MEGA version 11.0.10 (*Kumar, Stecher & Tamura, 2016*) using ClustalW (*Thompson, Higgins & Gibson, 1994*). A phylogenetic tree was constructed using maximum likelihood analysis. All sequences were deposited at NCBI's GenBank (accession numbers [ON242065](#) to [ON242092](#)).

### HRM data processing and taxonomic assignment

HRM data was processed as described by *Schiwek et al. (2020)*. Briefly, relative fluorescence unit (RFU) data was obtained from the CFX Maestro<sup>™</sup> Software (Bio-Rad CFX Maestro 1.1 version 4.1.2433.1219, Biorad, Rüdigerheim, Germany) and the negative first derivative was calculated to obtain melting curves. Difference curves were generated by subtracting the melting curve data of each reference earthworm from the mean melting curve data of all reference earthworms. All raw fluorescence and negative derivative of fluorescence data can be found in [File S1](#).

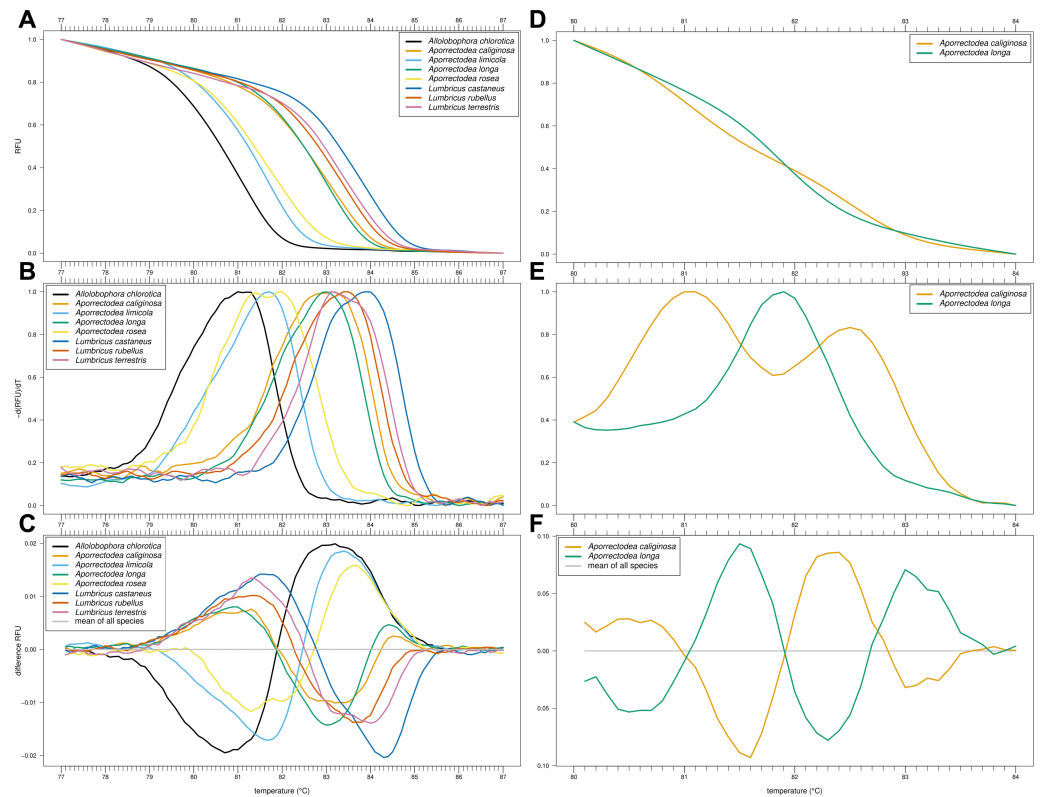
## RESULTS

### Rapid and inexpensive extraction of earthworm DNA

We developed a rapid extraction method to recover earthworm DNA from fresh or frozen tissue in less than 15 min. The method is easy, robust, and scalable. Furthermore, the method requires only minimal laboratory equipment (incubation at 70 °C and centrifugation) and comes at extremely low costs. As expected, extracted DNA was fragmented but sufficient amounts of amplifiable DNA were obtained ([Fig. S3](#)).

### HRM curve analysis of earthworms

Of our nine primer combinations, only the combination EW\_COI\_F2 and EW\_COI\_R1 (see [Fig. S1](#) for alignment) yielded successful amplification of all eight species and enabled

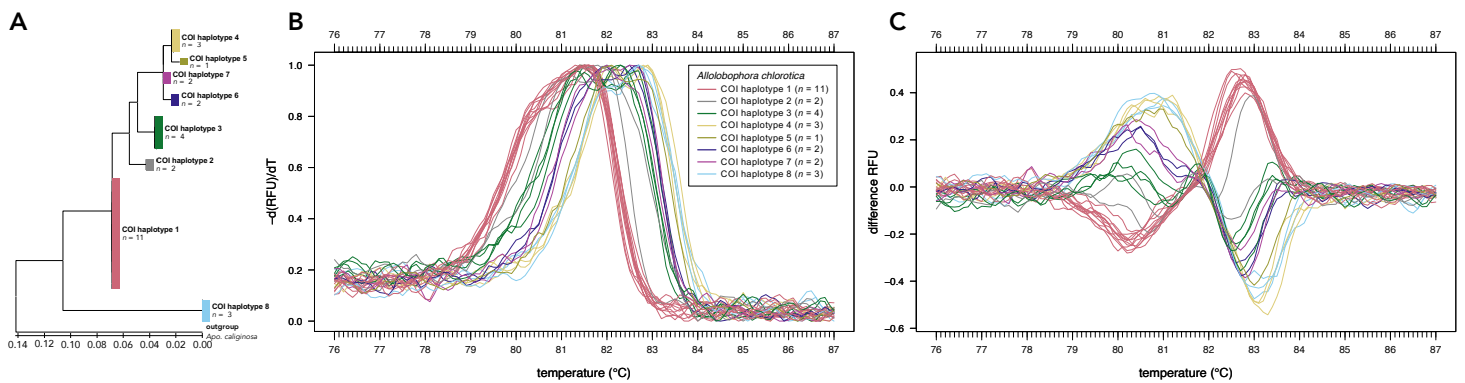


**Figure 1** High-resolution melting (HRM) curve assay for the identification of earthworm species. Denaturation curves of eight earthworm species (A) and *Aporrectodea caliginosa* and *Apo. longa* (D). Melting curves of eight earthworm species (B) and *Apo. caliginosa* and *Apo. longa* (E). Difference curves of eight earthworm species (C) and *Apo. caliginosa* and *Apo. longa* (F). PCRs were carried out using the primer pair EW\_COI\_F2 and EW\_COI\_R1. Differences curves were generated by subtracting the data of each curve from the mean of all curves. All curves represent means of five technical replicates.

Full-size [DOI: 10.7717/peerj.13661/fig-1](https://doi.org/10.7717/peerj.13661/fig-1)

the distinction of *Allo. chlorotica*, *Apo. limicola*, *Apo. rosea*, *Lumbricus castaneus*, *L. rubellus*, and *L. terrestris* (Figs. 1A–1C). The subsequent multiplex real-time PCR assay with HRM curve analysis to distinguish *Allo. caliginosa* from *Allo. longa* was done using different markers (see *Development of HRM curve assay*) (Figs. 1D–1F).

Sanger sequencing of the COI region of 28 individuals of *Allo. chlorotica* revealed eight different COI sequence variants (COI haplotypes) among individuals within the COI subregion amplified by the primer pair EW\_COI\_F2 and EW\_COI\_R1 (Fig. 2A). HRM curve analysis of the 28 individuals of *Allo. chlorotica* using the primer pair EW\_COI\_F2 and EW\_COI\_R1 mirrored the genetic distances among COI haplotypes (cf. Figs. 2A–2C). We were able to successfully distinguish several different COI haplotypes within *Allo. chlorotica* (Figs. 2B, 2C); however, the samples clustered into three groups of COI haplotypes. Group 1 of COI haplotypes comprised haplotype 1, group 2 comprised haplotypes 2, 3, 6, and 7, and group 3 comprised haplotypes 4, 5 and 8. None of the COI haplotypes of *Allo. chlorotica* reported in this work were identical with any previously reported COI haplotype.



**Figure 2** High-resolution melting (HRM) curve assay for the distinction of earthworm COI haplotypes of *Allolobophora chlorotica*. Phylogenetic tree of 28 individuals of *Allo. chlorotica* (A). The tree was constructed from the COI subregion amplified by the primer pair EW\_COI\_F2 and EW\_COI\_R1. The tree was constructed using maximum likelihood analysis. Melting curves (B) and difference curves (C) of 28 individuals of *Allo. chlorotica*. PCRs were carried out using the primer pair EW\_COI\_F2 and EW\_COI\_R1. Differences curves were generated by subtracting the data of each curve from the mean of all curves.

Full-size DOI: 10.7717/peerj.13661/fig-2

## DISCUSSION

Identification of soil fauna is an essential part of belowground biodiversity research and new primer sets targeting soil fauna are continuously being developed (e.g., *Capra et al., 2016*). Most studies that used amplicon sequencing for metabarcoding of invertebrate communities worked with communities captured in traps and just few studies aimed to sequence soil fauna directly from soil samples (e.g., *Watts et al., 2019*). Although direct amplicon sequencing from soil offers high taxonomic resolution as well as the ability to include invertebrates irrespective of their life stage and locomotion, such approaches have certain disadvantages. For example, amplicon sequencing data is compositional and does not reveal the absolute population size (*Gloor et al., 2017*) and thereby also ignores population dynamics (e.g., *Beule, Arndt & Karlovsky, 2021*). Therefore, it was suggested to always accompany amplicon sequencing by absolute quantification approaches (*Beule, Arndt & Karlovsky, 2021*). Additionally, tremendous differences in the biomass of organisms lead to distinct differences in the DNA content per organism. Consequently, the number of sequences per individual is expected to increase with increasing biomass. Thus, relative abundances of taxa obtained from metabarcoding of complex communities reflect proportions of the biomass rather than population size. Earthworms are among the largest soil invertebrates and are frequently investigated in soil biodiversity surveys. For the sampling of earthworms, individuals are usually either extracted manually by hand-sorting or by using a combination of an expellant (e.g., allyl isothiocyanate or formaldehyde) combined with hand-sorting. Such sampling and identification of individuals allows for the determination of population size and dynamics.

New tools for the identification of earthworms are continuously emerging. For example, in 2014, *Fernández et al. (2014)* showed that earthworms specimens can be identified taxonomically using micro-computed tomography. In 2021, the use of mid-infrared spectroscopy was proposed as a tool for earthworm identification (*Pham et al., 2021*). The



same year, [Andleeb et al. \(2021\)](#) developed a machine-learning model for the identification of earthworms based on digital images. Currently, these techniques are rather experimental and have not established themselves in practice yet. A more widely established method besides traditional morphological identification is DNA barcoding of taxonomically informative loci such as COI.

Molecular tools such as DNA barcoding are associated with higher costs as morphological identification, partly due to the required basic equipment and the extraction of DNA that is commonly done using commercial extraction kits. Here, we introduce a simple, rapid, robust, inexpensive, and scalable homemade extraction method that enables the extraction of amplifiable DNA from earthworm tissue in less than 15 min. We believe that such techniques could help to promote the use of molecular techniques for earthworm taxonomy.

For large-scale use, HRM curve analysis is faster and less expensive compared to barcoding approaches as it is a closed-tube, post-PCR method. Still, investment costs for a real-time PCR thermocycler capable of generating HRM curves (*i.e.*, step-wise heating of PCR products at 0.1 to 0.2 °C per step under continuous fluorescence measurement) as well as costs for commercial software for the generation of HRM curves (unless raw fluorescence data is processed outside of a commercial software) remain a major hurdle for many laboratories. In the present study, we were able to distinguish eight earthworm species common to agricultural soils in Central Europe by using HRM curve analysis of a subregion of the COI gene ([Fig. 1](#)). However, as for barcoding approaches, suitable marker genes must be selected carefully. For example, large intraspecific variations in the COI gene of earthworms may limit its usage as a marker for DNA barcoding at species level (*e.g.*, [Chang, Rougerie & Chen, 2009](#)). Furthermore, since *Apo. caliginosa* and *Apo. longa* could not be clearly distinguished in the HRM curve assay alone, a subsequent multiplex PCR assay expanded by the generation of HRM curves must be performed to identify all eight species. Although our assay is an important first step towards HRM curve-based identification of earthworms, more work is required to overcome such limitations.

Sequencing of the COI gene of 28 individuals of *Allo. chlorotica* revealed eight different COI haplotypes within a short subregion (158 bp) of COI ([Fig. 2A](#)). Some of these COI haplotypes were distinguishable by using HRM curve analysis ([Figs. 2B, 2C](#)), highlighting its potential for intraspecies differentiation. However, we also found that several COI haplotypes (*i.e.*, those within COI haplotype group 2 and 3) are undistinguishable using our HRM curve assay, limiting haplotype typing. Although sequencing remains necessary in our case to uncover the full diversity of haplotypes, HRM curve-based differentiation of haplotypes can serve as a first indication of haplotype diversity. Similar findings among individuals of *Allo. chlorotica* were obtained by [Baudrin et al. \(2020\)](#) for a subregion of the 16S rRNA gene. Besides its potential to assess intraspecific variability, intraspecific marker gene variations may impede robust identification at species level using HRM curve analysis, particularly if the variation of melting profiles induced by intraspecific marker gene variation is large. Until suitable marker genes or marker gene subregions are found, we suggest that HRM curve analysis of earthworms could support morphological investigations, especially for juveniles and damaged specimens that cannot be identified

morphologically. If combined, morphological identification and HRM curve analysis may be a suitable alternative to DNA barcoding.

## CONCLUSION

HRM curve analysis of COI genes has the potential to simultaneously identify earthworm species and assess intraspecific variations. For robust species identification, we encourage researchers to search for marker genes or marker gene subregions that are suitable for species differentiation by HRM curve analysis and have no to minimal intraspecific variation. Morphological identification remains the most common method to identify earthworm species; therefore, we suggest that HRM curve analysis can be used to confirm morphological identification, especially for juveniles and damaged tissue. Molecular analyses have several advantages over morphological identification but are cost and labour intensive. Our rapid and inexpensive DNA extraction method from earthworm tissue helps to reduce the costs of molecular analyses and thereby promote their application in practice.

## ACKNOWLEDGEMENTS

The authors would like to thank Dominique Conrad and Max Freihoff for technical assistance in the laboratory.

## ADDITIONAL INFORMATION AND DECLARATIONS

### Funding

This study was supported by the joint project MonViA - the German Farmland Biodiversity Monitoring that has been funded by the Federal Ministry of Food and Agriculture (BMEL). The funders had no role in study design, data collection and analysis, decision to publish, or preparation of the manuscript.

### Grant Disclosures

The following grant information was disclosed by the authors:  
Federal Ministry of Food and Agriculture.

### Competing Interests

The authors declare there are no competing interests.

### Author Contributions

- Anna Vaupel conceived and designed the experiments, performed the experiments, analyzed the data, prepared figures and/or tables, authored or reviewed drafts of the article, and approved the final draft.
- Bernd Hommel conceived and designed the experiments, authored or reviewed drafts of the article, and approved the final draft.
- Lukas Beule conceived and designed the experiments, performed the experiments, analyzed the data, prepared figures and/or tables, authored or reviewed drafts of the article, and approved the final draft.

## DNA Deposition

The following information was supplied regarding the deposition of DNA sequences:

All sequences are available at NCBI's GenBank: [ON242065](#) to [ON242092](#).

## Data Availability

The following information was supplied regarding data availability:

All raw fluorescence and negative derivative of fluorescence data are available in the [Supplementary File](#).

## Supplemental Information

Supplemental information for this article can be found online at <http://dx.doi.org/10.7717/peerj.13661#supplemental-information>.

## REFERENCES

- Ajamma Y, Mararo E, Omondi D, Onchuru T, Muigai A, Masiga D, Villinger J. 2016.** Rapid and high throughput molecular identification of diverse mosquito species by high resolution melting analysis. *F1000Research* 5:1949 DOI [10.12688/f1000research.9224.1](#).
- Andleeb S, Abbasi WA, Mustafa RGHulam, Gu Islam, Naseer A, Shafique I, Parween A, Shaheen B, Shafiq M, Altaf M, Abbas Sali. 2021.** ESIDE: a computationally intelligent method to identify earthworm species (*E. fetida*) from digital images: application in taxonomy. *PLOS ONE* 16:e0255674 DOI [10.1371/journal.pone.0255674](#).
- Ashwood F, Vanguelova EI, Benham S, Butt KR. 2019.** Developing a systematic sampling method for earthworms in and around deadwood. *Forest Ecosystems* 6:33 DOI [10.1186/s40663-019-0193-z](#).
- Baudrin G, Roy V, Gigon A, Dupont L. 2020.** Bar-HRM for identification of cryptic earthworm species. *Pedobiologia* 80:150634 DOI [10.1016/j.pedobi.2020.150634](#).
- Beule L, Arndt M, Karlovsky P. 2021.** Relative abundances of species or sequence variants can be misleading: soil fungal communities as an example. *Microorganisms* 9:589 DOI [10.3390/microorganisms9030589](#).
- Beule L, Grüning M, Karlovsky P, L-M-Arnold A. 2017.** Changes of scots pine phyllosphere and soil fungal communities during outbreaks of defoliating insects. *Forests* 8:316 DOI [10.3390/f8090316](#).
- Billaud O, Vermeersch R-L, Porcher E. 2021.** Citizen science involving farmers as a means to document temporal trends in farmland biodiversity and relate them to agricultural practices. *Journal of Applied Ecology* 58:261–273 DOI [10.1111/1365-2664.13746](#).
- Bottinelli N, Capowiez Y. 2021.** Earthworm ecological categories are not functional groups. *Biology and Fertility of Soils* 57:329–331 DOI [10.1007/s00374-020-01517-1](#).
- Bouché M. 1972.** Lombriciens de France. *Ecologie et Systematique* 72:1–671.
- Brandfass C, Karlovsky P. 2008.** Upscaled CTAB-based DNA extraction and real-time PCR assays for *Fusarium culmorum* and *F. graminearum* DNA in plant

- material with reduced sampling error. *International Journal of Molecular Sciences* 9:2306–2321 DOI 10.3390/ijms9112306.
- Burkhardt U, Russell DJ, Decker P, Döhler M, Höfer H, Lesch S, Rick S, Römbke J, Trog C, Vorwald J, Wurst E, Xylander WER. 2014.** The Edaphobase project of GBIF-Germany—a new online soil-zoological data warehouse. *Applied Soil Ecology* 83:3–12 DOI 10.1016/j.apsoil.2014.03.021.
- Capra E, Giannico R, Montagna M, Turri F, Cremonesi P, Strozzi F, Leone P, Gandini G, Pizzi F. 2016.** A new primer set for DNA metabarcoding of soil Metazoa. *European Journal of Soil Biology* 77:53–59 DOI 10.1016/j.ejsobi.2016.10.005.
- Chang C-H, Rougerie R, Chen J-H. 2009.** Identifying earthworms through DNA barcodes: pitfalls and promise. *Pedobiologia* 52:171–180 DOI 10.1016/j.pedobi.2008.08.002.
- Cortez J. 1998.** Field decomposition of leaf litters: relationships between decomposition rates and soil moisture, soil temperature and earthworm activity. *Soil Biology and Biochemistry* 30:783–793 DOI 10.1016/S0038-0717(97)00163-6.
- Doube BM, Stephens PM, Davoren CW, Ryder MH. 1994.** Interactions between earthworms, beneficial soil microorganisms and root pathogens. *Applied Soil Ecology* 1:3–10 DOI 10.1016/0929-1393(94)90018-3.
- Fernández R, Kvist S, Lenihan J, Giribet G, Ziegler A. 2014.** Sine systemate chaos? A versatile tool for earthworm taxonomy: non-destructive imaging of freshly fixed and museum specimens using micro-computed tomography. *PLOS ONE* 9:e96617 DOI 10.1371/journal.pone.0096617.
- Fidler G, Kocsube S, Leiter E, Biro S, Paholcsek M. 2016.** DNA barcoding coupled with high resolution melting analysis enables rapid and accurate distinction of aspergillus species. *Medical Mycology* 55:642–659 DOI 10.1093/mmy/myw127.
- Folmer O, Black M, Wr H, Lutz R, Vrijenhoek R. 1994.** DNA primers for amplification of mitochondrial Cytochrome C oxidase subunit I from diverse metazoan invertebrates. *Molecular Marine Biology and Biotechnology* 3:294–299.
- Friberg H, Lagerlöf J, Rämert B. 2005.** Influence of soil fauna on fungal plant pathogens in agricultural and horticultural systems. *Biocontrol Science and Technology* 15:641–658 DOI 10.1080/09583150500086979.
- Gloor GB, Macklaim JM, Pawlowsky-Glahn V, Egozcue JJ. 2017.** Microbiome datasets are compositional: and this is not optional. *Frontiers in Microbiology* 8:2224 DOI 10.3389/fmicb.2017.02224.
- Graff O. 1953.** *Die Regenwürmer Deutschlands.—Schriftenreihe der Forschungsanstalt für Landwirtschaft Braunschweig-Völkenrode* 7. Germany: Schaper.
- Hebert PDN, Cywinska A, Ball SL, de Waard JR. 2003.** Biological identifications through DNA barcodes. *Proceedings of the Royal Society of London Series B: Biological Sciences* 270:313–321 DOI 10.1098/rspb.2002.2218.
- Huang J, Xu Q, Sun ZJ, Tang GL, Su ZY. 2007.** Identifying earthworms through DNA barcodes. *Pedobiologia* 51:301–309 DOI 10.1016/j.pedobi.2007.05.003.
- King RA, Vaughan IP, Bell JR, Bohan DA, Symondson WO. 2010.** Prey choice by carabid beetles feeding on an earthworm community analysed using species-and

- lineage-specific PCR primers. *Molecular Ecology* **19**:1721–1732  
DOI [10.1111/j.1365-294X.2010.04602.x](https://doi.org/10.1111/j.1365-294X.2010.04602.x).
- Kumar S, Stecher G, Tamura K. 2016.** MEGA7: molecular evolutionary genetics analysis version 7.0 for bigger datasets. *Molecular Biology and Evolution* **33**:1870–1874  
DOI [10.1093/molbev/msw054](https://doi.org/10.1093/molbev/msw054).
- Lin J-H, Tseng C-P, Chen Y-J, Lin C-Y, Chang S-S, Wu H-S, Cheng J-C. 2008.** Rapid differentiation of influenza A virus subtypes and genetic screening for virus variants by high-resolution melting analysis. *Journal of Clinical Microbiology* **46**:1090–1097  
DOI [10.1128/JCM.02015-07](https://doi.org/10.1128/JCM.02015-07).
- Linden DR, Hendrix PF, Coleman DC, van Vliet PCJ. 1994.** Faunal Indicators of Soil Quality **35**:91–106 DOI [10.2136/sssaspecpub35.c6](https://doi.org/10.2136/sssaspecpub35.c6).
- Ljungström P. 1970.** Introduction to the study of earthworm taxonomy. *Pedobiologia* **10**:265–285.
- Naze F, Desvars A, Picardeau M, Bourhy P, Michault A. 2015.** Use of a new high resolution melting method for genotyping pathogenic leptospira spp. *PLOS ONE* **10**:e0127430 DOI [10.1371/journal.pone.0127430](https://doi.org/10.1371/journal.pone.0127430).
- Ngui R, Lim YAL, Chua KH. 2012.** Rapid detection and identification of human hookworm infections through high resolution melting (HRM) analysis. *PLOS ONE* **7**:e41996 DOI [10.1371/journal.pone.0041996](https://doi.org/10.1371/journal.pone.0041996).
- Ouso DO, Otiende MY, Jeneby MM, Oundo JW, Bargul JL, Miller SE, Wambua L, Villinger J. 2020.** Three-gene PCR and high-resolution melting analysis for differentiating vertebrate species mitochondrial DNA for biodiversity research and complementing forensic surveillance. *Scientific Reports* **10**:4741  
DOI [10.1038/s41598-020-61600-3](https://doi.org/10.1038/s41598-020-61600-3).
- Pères G, Vandebulcke F, Guernion M, Hedde M, Beguiristain T, Douay F, Houot S, Piron D, Richard A, Bispo A, Grand C, Galsomies L, Cluzeau D. 2011.** Earthworm indicators as tools for soil monitoring, characterization and risk assessment. An example from the national Bioindicator programme (France). *Pedobiologia* **54**:S77–S87 DOI [10.1016/j.pedobi.2011.09.015](https://doi.org/10.1016/j.pedobi.2011.09.015).
- Pham T, Rumpel C, Capowiez Y, Jouquet P, Pelosi C, Pando A, Aroui Boukbida H, Bottinelli N. 2021.** Mid-infrared spectroscopy of earthworm bodies to investigate their species belonging and their relationship with the soil they inhabit. *Applied Soil Ecology* **162**:103894 DOI [10.1016/j.apsoil.2021.103894](https://doi.org/10.1016/j.apsoil.2021.103894).
- Ratnasingham S, Hebert PDN. 2007.** bold: The barcode of life data system (<http://www.barcodinglife.org>). *Molecular Ecology Notes* **7**:355–364  
DOI [10.1111/j.1471-8286.2007.01678.x](https://doi.org/10.1111/j.1471-8286.2007.01678.x).
- Reichle DE. 1977.** The role of soil invertebrates in nutrient cycling. *Ecological Bulletins* **145**–156.
- Richard B, Decaëns T, Rougerie R, James SW, Porco D, Hebert PDN. 2010.** Re-integrating earthworm juveniles into soil biodiversity studies: species identification through DNA barcoding. *Molecular Ecology Resources* **10**:606–614  
DOI [10.1111/j.1755-0998.2009.02822.x](https://doi.org/10.1111/j.1755-0998.2009.02822.x).

- Rutgers M, Orgiazzi A, Gardi C, Römbke J, Jansch S, Keith AM, Neilson R, Boag B, Schmidt O, Murchie AK, Blackshaw RP, Pérès G, Cluzeau D, Guernion M, Briones MJI, Rodeiro J, Piñeiro R, Cosín DJD, Sousa JP, Suhadolc M, Kos I, Krogh P-H, Faber JH, Mulder C, Bogte JJ, Wijnen HJV, Schouten AJ, Zwart DD. 2016. Mapping earthworm communities in Europe. *Applied Soil Ecology* 97:98–111 DOI 10.1016/j.apsoil.2015.08.015.
- Schiwek S, Beule L, Viñas M, Pfordt A, Tiedemann A, Karlovsky P. 2020. High-Resolution Melting (HRM) curve assay for the identification of eight fusarium species causing ear rot in maize. *Pathogens* 9:270 DOI 10.3390/pathogens9040270.
- Sims RW, Gerard BM. 1985. *Earthworms: keys and notes for the identification and study of the species: Brill Archive*. London: Linnean Society of London.
- Skorpikova L, Reslova N, Magdalek J, Vadlejch J, Kasny M. 2020. The use of high resolution melting analysis of ITS-1 for rapid differentiation of parasitic nematodes *Haemonchus contortus* and *Ashworthius sidemi*. *Scientific Reports* 10:15984 DOI 10.1038/s41598-020-73037-9.
- Sofa A, Mininni AN, Ricciuti P. 2020. Soil macrofauna: a key factor for increasing soil fertility and promoting sustainable soil use in fruit orchard agrosystems. *Agronomy* 10:456 DOI 10.3390/agronomy10040456.
- Stöp-Bowitz C. 1969. *A contribution to our knowledge of the systematics and zoogeography of Norwegian earthworms*. Lumbricidae: Annelida Oligochaeta.
- Stroud JL. 2019. Soil health pilot study in England: outcomes from an on-farm earthworm survey. *PLOS ONE* 14:e0203909 DOI 10.1371/journal.pone.0203909.
- Thompson JD, Higgins DG, Gibson TJ. 1994. CLUSTAL W: improving the sensitivity of progressive multiple sequence alignment through sequence weighting, position-specific gap penalties and weight matrix choice. *Nucleic Acids Research* 22:4673–4680 DOI 10.1093/nar/22.22.4673.
- Tsiafouli MA, Thebault E, Sgardelis SP, de Ruiter PC, Putten WHvander, Birkhofer K, Hemerik L, de Vries FT, Bardgett RD, Brady MV, Bjornlund L, Jorgensen HB, Christensen S, Hertefeldt TD, Hotes S, Hol WHGera, Frouz J, Liiri M, Mortimer SR, Setälä H, Tzanopoulos J, Uteseny K, Pizl V, Stary J, Wolters V, Hedlund K. 2015. Intensive agriculture reduces soil biodiversity across Europe. *Global Change Biology* 21:973–985 DOI 10.1111/gcb.12752.
- Wang J, Xu F, Li L, Zhang G. 2014. A new identification method for five species of oysters in genus *Crassostrea* from China based on high-resolution melting analysis. *Chinese Journal of Oceanology and Limnology* 32:419–425 DOI 10.1007/s00343-014-3124-4.
- Watts C, Dopheide A, Holdaway R, Davis C, Wood J, Thornburrow D, Dickie IA. 2019. DNA metabarcoding as a tool for invertebrate community monitoring: a case study comparison with conventional techniques. *Austral Entomology* 58:675–686 DOI 10.1111/aen.12384.