

A 12-year record of intertidal barnacle recruitment in Atlantic Canada (2005–2016): relationships with sea surface temperature and phytoplankton abundance

Ricardo A. Scrosati and Julius A. Ellrich

Department of Biology, St. Francis Xavier University, Antigonish, Nova Scotia, Canada

ABSTRACT

On the Gulf of St. Lawrence coast of Nova Scotia (Canada), recruitment of the barnacle *Semibalanus balanoides* occurs in May and June. Every year in June between 2005 and 2016, we recorded recruit density for this barnacle at the same wave-exposed rocky intertidal location on this coast. During these 12 years, mean recruit density was lowest in 2015 (198 recruits dm^{-2}) and highest in 2007 (969 recruits dm^{-2}). The highest recruit density observed in a single quadrat was 1,457 recruits dm^{-2} (in 2011) and the lowest was 34 recruits dm^{-2} (in 2015). Most barnacle recruits appear during May, which suggests that most pelagic larvae (which develop over 5–6 weeks before benthic settlement) are in the water column in April. An AICc-based model selection approach identified sea surface temperature (SST) in April and the abundance of phytoplankton (food for barnacle larvae, measured as chlorophyll-*a* concentration –Chl-*a*–) in April as good explanatory variables. Together, April SST and April Chl-*a* explained 51% of the observed interannual variation in recruit density, with an overall positive influence. April SST was positively related to March–April air temperature (AT). April Chl-*a* was negatively related to the April ratio between the number of days with onshore winds (which blow from phytoplankton-limited offshore waters) and the number of days with alongshore winds (phytoplankton is more abundant on coastal waters). Therefore, this study suggests that climatic processes affecting April SST and April Chl-*a* indirectly influence intertidal barnacle recruitment by influencing larval performance.

Submitted 17 August 2016
Accepted 27 September 2016
Published 25 October 2016

Corresponding author
Ricardo A. Scrosati, rscrosat@stfx.ca

Academic editor
Karen Osborn

Additional Information and
Declarations can be found on
page 13

DOI 10.7717/peerj.2623

© Copyright
2016 Scrosati and Ellrich

Distributed under
Creative Commons CC-BY 4.0

OPEN ACCESS

Subjects Aquaculture, Fisheries and Fish Science, Ecology, Environmental Sciences, Marine Biology

Keywords Intertidal, Barnacle, Recruitment

INTRODUCTION

Recruitment is a key demographic step that replenishes populations and ensures their persistence, so it has received considerable attention in ecology (*Caley et al., 1996; Beck et al., 2001; Palumbi & Pinsky, 2014*). Because of their ease for monitoring, barnacles have become important model organisms to study recruitment. For barnacles, recruitment refers to the appearance of new benthic organisms that have metamorphosed

after pelagic cyprid larvae have settled on the substrate (Ellrich *et al.*, 2016). Barnacles are often abundant in rocky intertidal habitats, which are therefore places where barnacle recruitment has been mostly studied (Jenkins *et al.*, 2000; Navarrete, Broitman & Menge, 2008; Lathlean, Ayre & Minchinton, 2013; Menge *et al.*, 2015; Barbosa *et al.*, 2016).

As the complexity of coastal systems cannot be replicated in the laboratory, barnacle recruitment and its external drivers have been investigated mainly through mensurative field studies. Particularly useful are long-term records of recruitment coupled with environmental data (Kendall *et al.*, 1985; Menge & Menge, 2013). Long-term records of intertidal barnacle recruitment exist for the NE Pacific coast (28 years by Menge *et al.*, 2011; B.A. Menge, 2016, personal communication), the SE Pacific coast (nine years by Navarrete, Broitman & Menge, 2008), and the NE Atlantic coast (13 years by Kendall *et al.*, 1985, and 30 years by Abernot-Le Gac *et al.*, 2013), which harbour temperate biotas. For the NW Atlantic coast, another temperate coastal system, intertidal barnacle recruitment has been documented (Bertness, 1989; Minchinton & Scheibling, 1991; Petraitis & Vidargas, 2006; Bertness, Gaines & Wahle, 1996; Leonard, Ewanchuk & Bertness, 1999; Leonard, 2000; Pineda, Riebensahm & Medeiros-Bergen, 2002; Cole *et al.*, 2011; Ellrich, Scrosati & Molis, 2015), but long-term records of at least a decade are unavailable. In fact, no such long-term recruitment dataset seems to exist for any rocky intertidal invertebrate from this coast.

To address this knowledge gap, in 2005 we started a monitoring program to record intertidal barnacle recruitment every year at the same location in Atlantic Canada. This paper reports the results until 2016. Our first objective is to document the interannual changes in barnacle recruitment during this 12-year period. Sea surface temperature (SST) and coastal phytoplankton abundance are often important drivers of intertidal barnacle recruitment (Menge & Menge, 2013; Mazzuco *et al.*, 2015). While water temperature universally affects the performance of aquatic ectotherms (Payne *et al.*, 2016; Seabra *et al.*, 2016), phytoplankton feeds the pelagic nauplius larvae (the stages preceding the cyprid stage) and recruits of barnacles, as they are filter-feeders (Singarajah, Moyses & Knight-Jones, 1967; Anderson, 1994; Jarrett, 2003; Gyory, Pineda & Solow, 2013). Therefore, our second objective is to evaluate how barnacle recruitment was related to SST and phytoplankton abundance during our study period in search of signals of external forcing in this system.

MATERIALS AND METHODS

The study location is Sea Spray (45°46.38'N, 62°8.67'W), located near Arisaig, on the southern coast of the Gulf of St. Lawrence, Nova Scotia, Canada (Fig. 1). The surveyed intertidal habitats are wave-exposed, as they face open waters without any physical obstruction. In-situ measures of daily maximum water velocity taken during the summer and fall of 2005 ranged between 4–8 m s⁻¹ (Scrosati & Heaven, 2007). The intertidal substrate of the surveyed habitats is stable volcanic bedrock with a moderate slope and rugosity (Fig. 2).

On this coast, *Semibalanus balanoides* is the only intertidal barnacle species (Scrosati & Heaven, 2007). It is a cross-fertilizing hermaphrodite that, in Atlantic Canada, mates in

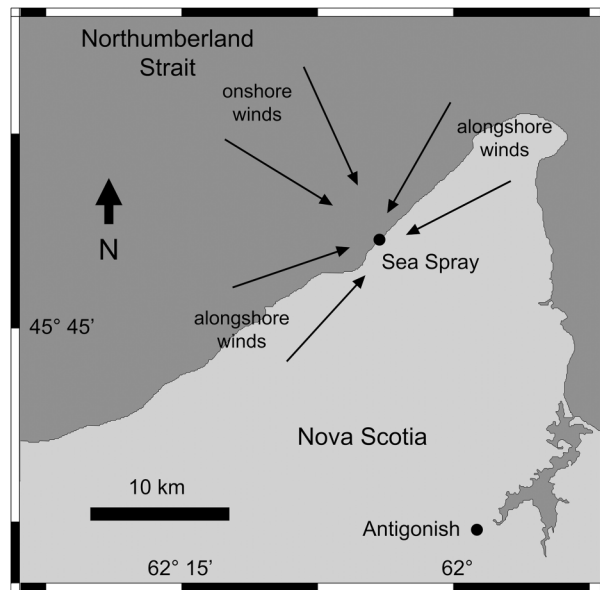


Figure 1 Map indicating the position of the surveyed location (Sea Spray) on the southern coast of the Gulf of St. Lawrence, Nova Scotia, Canada. The arrows indicate common onshore winds and alongshore winds.

autumn, breeds in winter, and releases pelagic larvae in spring (Bousfield, 1954; Crisp, 1968). The sea surface in this region freezes in winter (Galbraith et al., 2015). After the ice melts in late winter or early spring, barnacle recruits appear on the substrate during a limited recruitment season between early May and mid- to late June (Ellrich, Scrosati & Molis, 2015). Recruits appear throughout the full vertical intertidal range, which is 1.8 m on this coast (MacPherson & Scrosati, 2008). For this study, we measured barnacle recruitment at an elevation of 2/3 of the intertidal range. Shortly before the 2005 recruitment season, we determined the position of a permanent transect line by establishing stainless steel nails on the substrate at 1.2 m of elevation above chart datum (lowest normal tide, or 0 m). Then, at the second or third week of June every year from 2005 to 2016 (Table 1), we measured the density of barnacle recruits in 29–33 (Table 1) 10 × 10 cm quadrats randomly positioned right above the transect line. Each quadrat was photographed to enable accurate recruit counting on a computer. Because of intense ice scour in winter (Scrosati & Heaven, 2006), the surveyed intertidal habitats in spring consist of mostly bare rock, offering abundant space for barnacle recruitment (Fig. 2). Other macroscopic organisms occurring in such habitats in early spring are mostly only a few adult barnacles from previous years (MacPherson, Scrosati & Chareka, 2008). Furoid algae and snails are rare in these habitats at that time of the year. Barnacle recruits are easily identified because of their small size (1–2 mm in basal diameter) compared with adult barnacles (Fig. 2).

We obtained data on SST and chlorophyll-*a* concentration (Chl-*a*, proxy for phytoplankton abundance) from the OceanColor Web database from the National Aeronautics and Space Administration using SeaDAS software (National Aeronautics and Space Administration, 2016). This website provides data measured by three satellites that

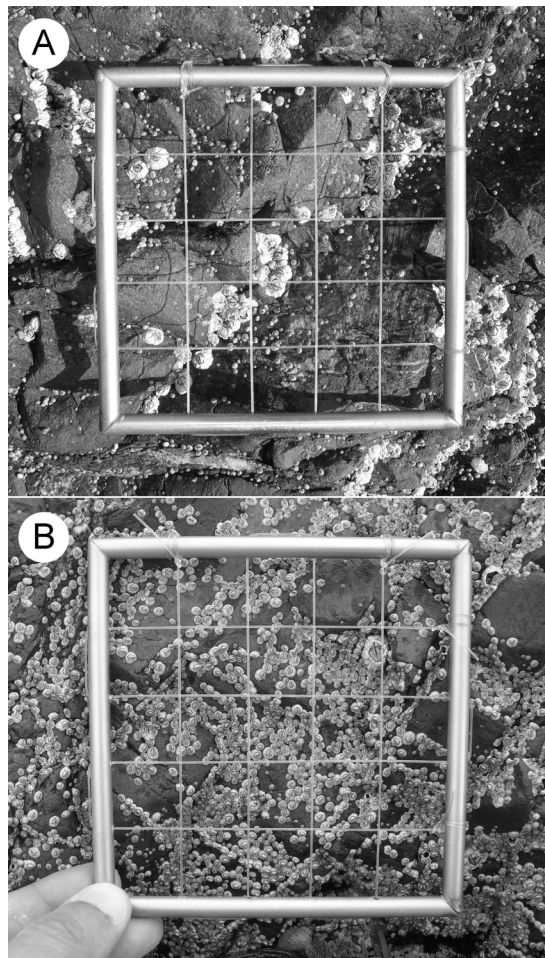


Figure 2 Pictures of the studied habitat taken in June in different years. (A) View showing several adult barnacles that survived the previous winter and many recruits that appeared during the spring. (B) View showing a higher abundance of recruits and only one adult barnacle.

Table 1 Dates in which barnacle recruit density was measured and sample size (number of quadrats) used for each date.

Measurement date	Sample size
8 June 2005	30
7–10 June 2006	30
14 June 2007	30
6 June 2008	29
10 June 2009	32
12 June 2010	31
6 June 2011	33
8 June 2012	33
6 June 2013	33
15 June 2014	32
15 June 2015	32
18 June 2016	32

were operational at different times during our study period: MODIS-Aqua measured SST between 2005–2011, MERIS measured Chl-*a* between 2005–2011, and VIIRS measured SST and Chl-*a* between 2012–2016. We calculated monthly means of SST and Chl-*a* using the data for the 4×4 km cell that contains Sea Spray. When no data were available for that cell (April SST in 2006 and 2008, May SST in 2011, and April Chl-*a* in 2014 and 2015), we used data for the 9×9 km cell that contains Sea Spray. Using the dates for which data were available for both cell sizes, we found high correlations for SST ($r = 0.99$ for 2005–2011 and 2012–2016) and Chl-*a* ($r = 0.96$ for 2005–2011 and $r = 0.93$ for 2012–2016) between the two cell sizes, showing the utility of 9×9 km cell data. For marine shores, small differences between satellite Chl-*a* data and local data from in-situ measures may exist. However, satellite data are the only Chl-*a* descriptors available for Sea Spray for the studied period. These data should be adequate for this study for at least two reasons. On the one hand, the study focuses mainly on interannual differences and such differences are relatively large (see Results), suggesting that the signal is stronger than potential noise. On the other hand, the study identifies Chl-*a* as important for barnacle larvae (see Results) and, on open shores, the pelagic larvae likely respond to Chl-*a* changes across extensive areas that may be covered well by the cells scanned by satellites.

To evaluate possible SST and Chl-*a* forcing on barnacle recruitment, we used the April and May monthly means of SST and Chl-*a* from 2005 to 2016. We used May means because recruits start to appear in early May (Ellrich, Scrosati & Molis, 2015) and April means because the nauplius larvae of *S. balanoides* develop over 5–6 weeks in coastal waters (Bousfield, 1954; Drouin, Bourget & Tremblay, 2002) before reaching the settling cyprid stage. The use of April means was further supported by recruit counts done repeatedly in 12 nearby quadrats during the 2013 recruitment season. For those quadrats, mean recruit density was 177 recruits dm^{-2} on 4 May, 417 recruits dm^{-2} on 13 May, 762 recruits dm^{-2} on 24 May, and 963 recruits dm^{-2} on 6 June. As dead recruits (indicated by empty shells on the substrate) were rare, these observations reveal that most of the new recruits appeared during May, indicating that most of the larvae that generated the June value of recruit density were in the water in April. We did not use June monthly means of SST and Chl-*a* because each year recruit density was measured before the end of June.

To evaluate if barnacle recruit density differed among years during the study period, we performed a one-way analysis of variance (Sokal & Rohlf, 2012). We evaluated the statistical influence of SST and Chl-*a* on barnacle recruit density through a model selection approach (Anderson, 2008). Considering the yearly mean of recruit density as the dependent variable, we compared the linear models representing all possible combinations of April SST, May SST, April Chl-*a*, and May Chl-*a* (15 models) based on their respective value of the corrected Akaike's information criterion (AICc). With the 15 AICc scores, we calculated the weight of evidence for each model. Then, we assessed the plausibility of each model by calculating the corresponding evidence ratio, that is, the ratio between the weight of evidence for the best model (the one with the lowest AICc value) and that for the corresponding model (Anderson, 2008). We calculated the adjusted

squared correlation coefficient (R^2) for the most plausible models to determine the amount of variation in recruit density that could be explained by the corresponding combination of SST and Chl-*a*.

Given that April SST and April Chl-*a* were found relevant for barnacle recruitment (see Results), we examined factors that could explain the interannual changes in these two pelagic traits. We considered air temperature (AT) to interpret April SST changes and sea ice and winds to interpret April Chl-*a* changes. We considered AT because, on the Gulf of St. Lawrence, SST was found to lag AT by half a month ([Galbraith et al., 2012](#)). We used data from [Environment Canada \(2016\)](#) to calculate the month-long averages of AT for Caribou Point (45°46'N, 62°40'W, the closest weather station with AT data) centered on 31 March for the 2005–2016 period and, then, we examined the correlation with April SST. Sea ice develops extensively on the Gulf of St. Lawrence in winter and melts between late winter and early spring ([Galbraith et al., 2015](#)). We reasoned that the abundance of coastal phytoplankton at Sea Spray in April could be inversely related to the extent of ice cover, as sea ice reduces irradiance. Thus, we used daily ice charts covering Sea Spray ([Canadian Ice Service, 2016](#)) to examine correlations between April Chl-*a* for the 2005–2016 period and four measures of ice load: the Julian day when ice cover dropped below 10% for the last time every year and the mean ice cover for April and March, both separately and combined. Wind data were available for April for Caribou Point only for 2008–2016 ([Environment Canada, 2016](#)). For those years, April Chl-*a* was, on average, 63% higher along 30 km of coastline centered at Sea Spray ($8.3 \pm 1.4 \text{ mg m}^{-3}$, $n = 9$ years; yearly April means calculated using data for nine cells along that coastal range) than along a similar length on Northumberland Strait waters 25 km offshore ($5.1 \pm 0.9 \text{ mg m}^{-3}$, $n = 9$ years; yearly April means calculated using data for nine cells along the strait). Thus, we deemed that alongshore winds would be related to higher Chl-*a* values at Sea Spray than onshore winds. The coastline including Sea Spray is relatively linear for 30 km and it is oriented at an angle of $\sim 60^\circ$ measured clockwise to the right of a meridian, facing Northumberland Strait waters to the northwest ([Fig. 1](#)). Thus, we classified onshore winds as those coming from a sector between 290° – 10° (from offshore Northumberland Strait waters) and alongshore winds as those coming from sectors between 20° – 100° and between 200° – 280° (all angles measured clockwise relative to a meridian, with 0° to the north). Then, for the 2008–2016 period, we calculated the April ratio between the number of days with onshore winds and the number of days with alongshore winds and, then, we analyzed the correlation between that ratio and April Chl-*a*. We did the data analyses for this paper using JMP 9.0 for MacOS (AICc calculations) and STATISTICA 12.5 for Windows (all other analyses).

RESULTS

Barnacle recruit density varied among years between 2005 and 2016 ($F_{11,363} = 60.08$, $P < 0.0001$). Yearly means ranged between 198.4 recruits dm^{-2} (in 2015) and 968.6 recruits dm^{-2} (in 2007; [Fig. 3](#)). The highest density of recruits observed in a single quadrat during the study period was 1,457 recruits dm^{-2} (in 2011) and the lowest was 34 recruits dm^{-2} (in 2015). Adult barnacles (those surviving from previous

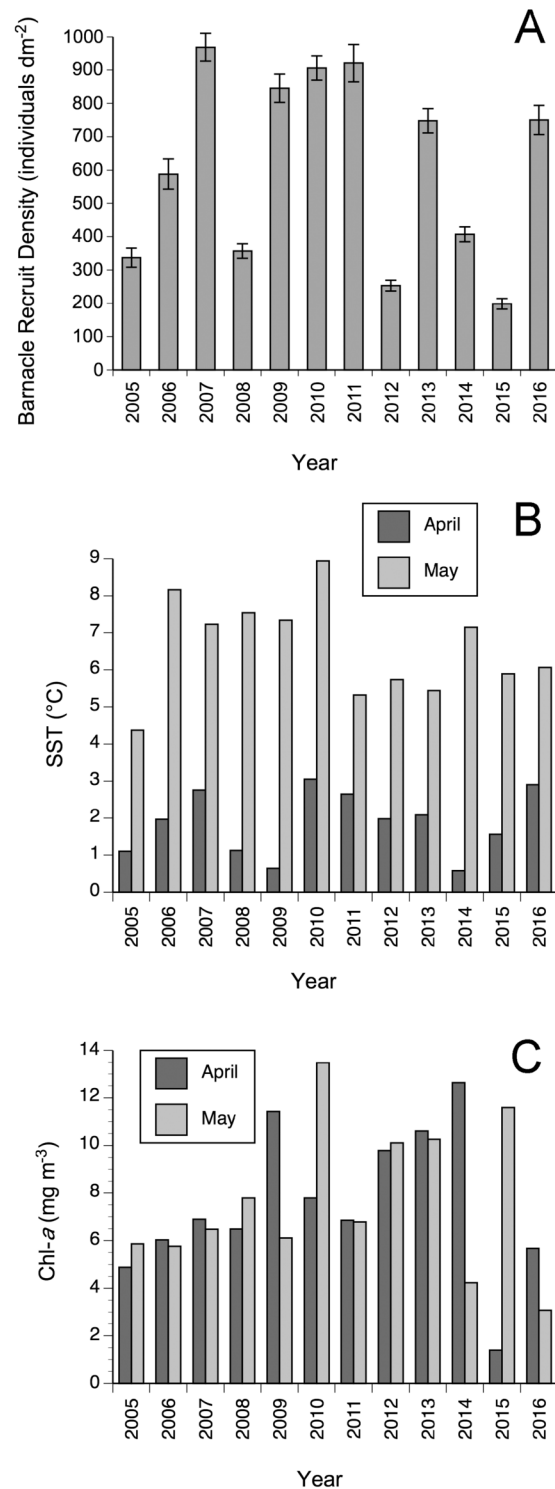


Figure 3 Annual changes in (A) mean (\pm SE) barnacle recruit density, (B) April and May SST, and (C) April and May Chl-*a* between 2005–2016.

years) were always in low abundance, with an average of 9.2 individuals dm⁻² for the study period, calculated from the 375 quadrats surveyed to measure recruit density. Other sessile species that are common in nearby wave-sheltered habitats (furoid algae –*Fucus* spp. and

Table 2 Comparison of the 15 models representing all possible combinations of April SST, May SST, April Chl-*a*, and May Chl-*a*, considering barnacle recruit density in June as the dependent variable. The second column shows the intercept of each model (represented by each row), while columns 3–6 show the regression coefficient for each independent variable included in the corresponding model.

Independent variables in the model	Intercept	April SST	May SST	April Chl- <i>a</i>	May Chl- <i>a</i>	adj. R^2	AICc	Evidence ratio
April SST	261.10	185.01	–	–	–	0.32	172.86	1
April SST, April Chl- <i>a</i>	–121.64	226.83	–	40.43	–	0.51	173.79	1.58
April SST, May SST	–87.56	177.24	55.02	–	–	0.39	176.34	5.68
May SST	172.93	–	65.70	–	–	0.10	176.34	5.69
April SST, May Chl- <i>a</i>	398.81	205.54	–	–	–23.08	0.38	176.47	6.05
April Chl- <i>a</i>	438.38	–	–	22.32	–	0.06	176.79	7.13
May Chl- <i>a</i>	672.98	–	–	–	–8.70	0.01	177.44	9.85
April SST, April Chl- <i>a</i> , May Chl- <i>a</i>	12.83	243.03	–	38.86	–20.04	0.55	178.93	20.71
April SST, May SST, April Chl- <i>a</i>	–311.28	218.01	35.44	36.74	–	0.53	179.42	26.52
May SST, April Chl- <i>a</i>	95.03	–	57.56	17.47	–	0.13	180.57	47.16
May SST, May Chl- <i>a</i>	243.47	–	70.12	–	–13.07	0.12	180.79	52.54
April SST, May SST, May Chl- <i>a</i>	22.72	199.81	62.65	–	–26.58	0.47	180.98	57.81
April Chl- <i>a</i> , May Chl- <i>a</i>	486.84	–	–	21.53	–5.57	0.06	181.46	73.55
April SST, May SST, April Chl- <i>a</i> , May Chl- <i>a</i>	–200.58	234.49	43.39	34.12	–22.84	0.59	186.66	989.31
May SST, April Chl- <i>a</i> , May Chl- <i>a</i>	158.69	–	61.89	15.64	–10.28	0.14	186.69	1,005.26

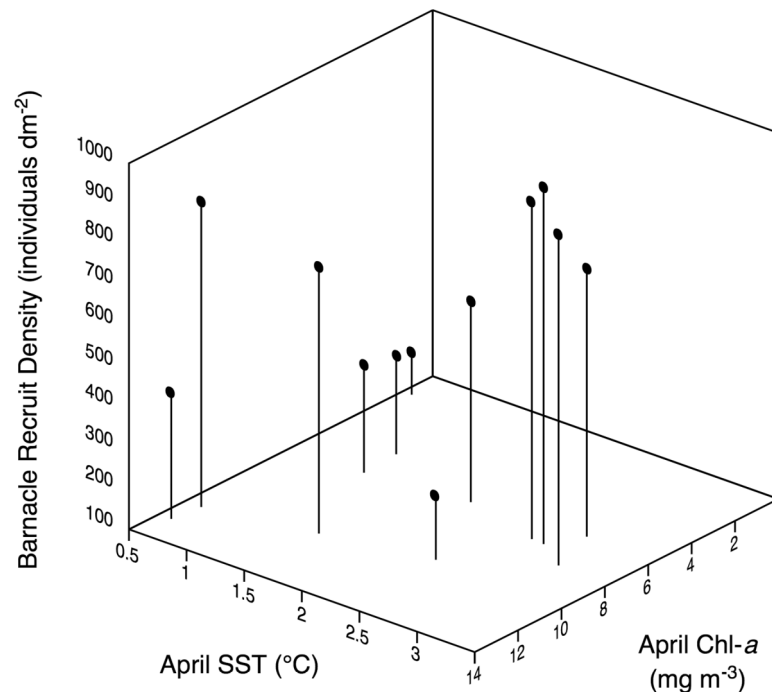


Figure 4 Relationship between barnacle recruit density in June, April SST, and April Chl-*a* between 2005–2016.

Ascophyllum nodosum– and blue mussels –*Mytilus edulis*–) were very rare in the surveyed wave-exposed habitats in June. Small thalli of *Fucus* spp. became common in the surveyed habitats towards the fall each year, but were apparently removed by ice scour in every

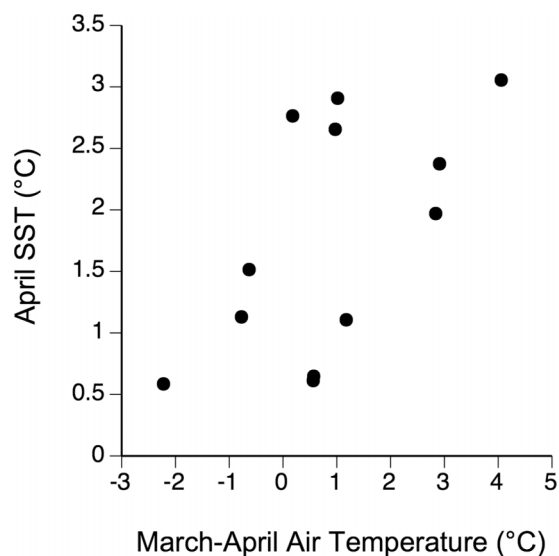


Figure 5 Relationship between air temperature (month-long averages centered on 31 March) and April SST between 2005–2016.

subsequent winter. Predatory dogwhelks (*Nucella lapillus*) and herbivorous snails (*Littorina* spp.) are also common in nearby wave-sheltered habitats, but they were also very rare in the wave-exposed habitats surveyed during the barnacle recruitment season.

SST and Chl-*a* also varied between 2005 and 2016 (Fig. 3). The model comparisons based on AICc scores revealed that the best model included only April SST as independent variable (Table 2), explaining 32% (adjusted $R^2 = 0.32$) of the interannual variation in barnacle recruit density (Table 2) through a positive relationship. This model was just 1.6 times more plausible than the next best model, which included April SST and April Chl-*a* as independent variables and explained 51% (adjusted $R^2 = 0.51$) of the interannual variation in barnacle recruit density (Table 2). The combined influence of these two variables on recruitment was positive (Fig. 4). The other models in the set were considerably less plausible, given that their evidence ratios were higher than five (Table 2).

Between 2005 and 2016, April SST and AT were positively correlated ($r = 0.59$, $P = 0.042$; Fig. 5). Linear correlations between April Chl-*a* and the four tested measures of ice load during this period were nonsignificant (P values between 0.55–0.95) and no nonlinear relationship was apparent either (Fig. 6). The April ratio between the number of days with onshore winds and the number of days with alongshore winds was negatively related to April Chl-*a* ($r = -0.68$, $P = 0.045$; Fig. 7).

DISCUSSION

This study reveals that intertidal barnacle recruitment has consistently occurred during the last 12 years at Sea Spray, our long-term reference location in Atlantic Canada. Adult barnacles are rare in the spring in wave-exposed habitats on this coast, mostly as a result of winter ice scour, as adult barnacle density in the fall is higher once the recruits from the preceding spring have grown (Belt, Cole & Scrosati, 2009). In the spring, adult barnacles are usually more abundant in wave-sheltered habitats (Belt, Cole & Scrosati, 2009), where

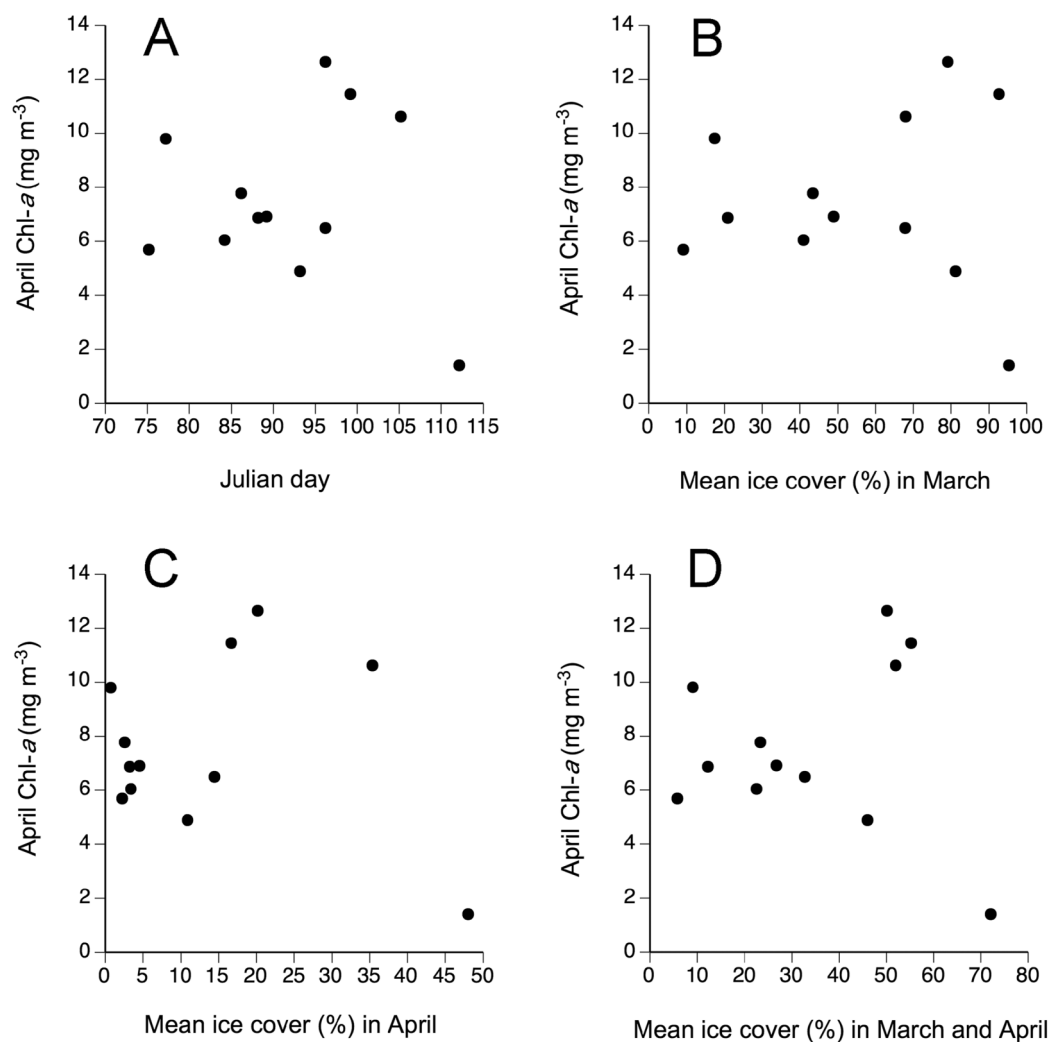


Figure 6 Relationship between April Chl-*a* and four measures of sea ice load: (A) Julian day when ice cover dropped below 10% for the last time every year and (B, C, and D) mean ice cover for April and March, both separately and combined.

winter ice scour is less intense (*Scrosati & Heaven, 2006*). Thus, the pool of larvae that repopulates wave-exposed habitats so abundantly in the spring likely comes from exposed and sheltered habitats hosting reproductive barnacles (*MacPherson, Scrosati & Chareka, 2008*). Identifying spatial sources of larvae could be investigated by looking at larval dispersal and spatial genetics in relation to local reproductive output and water movement (*Caley et al., 1996; Jonsson, Berntsson & Larsson, 2004; Selkoe et al., 2016*).

Although recruitment occurred every spring at Sea Spray, the intensity varied across years. Our model selection approach identified April SST as the best explanatory variable for recruitment, although the model with April SST and April Chl-*a* was similarly important, remarkably explaining half of the interannual variation in recruitment. The other tested models were considerably less plausible, according to model selection rules (*Anderson, 2008*). The first barnacle recruits appear on the studied coast in early May (*Ellrich, Scrosati & Molis, 2015*). Our observations during the 2013 recruitment season

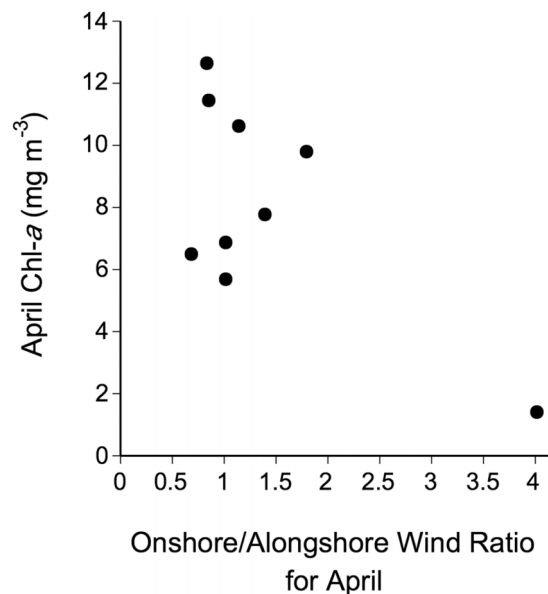


Figure 7 Relationship between April Chl-*a* and the April ratio between the number of days with onshore winds and the number of days with alongshore winds between 2005–2016.

indicated that most of the recruits composing the June recruit count appeared on the shore during May, and the phytoplanktonic larvae of *S. balanoides* go through nauplius stages for 5–6 weeks before reaching the settling stage (Bousfield, 1954; Drouin, Bourget & Tremblay, 2002). Therefore, the statistical relevance of April SST and April Chl-*a* suggests that water temperature and pelagic food supply influence intertidal recruitment primarily through a positive influence on pelagic larvae. Interestingly, Barnes (1956) found that the development of *S. balanoides* larvae on a UK shore improved with planktonic diatom abundance.

The present study evaluates multiannual patterns in barnacle recruitment at one NW Atlantic location. Data obtained for single years at other NW Atlantic locations further support the notion that Chl-*a* is important for recruitment in this region. Those studies also evaluated *S. balanoides* recruitment at an elevation of 2/3 of the intertidal range in wave-exposed habitats. In 2007 on the Damariscotta area in Maine (USA), recruit density was similar to that found at Sea Spray in the same year (Fig. 3), in agreement with the similarity in Chl-*a* found for both shores (Cole et al., 2011). Where Chl-*a* was three times lower, such as the west coast of Cape Breton Island, in northern Nova Scotia, recruit density in 2007 was considerably lower (Cole et al., 2011). In 2013 on Deming Island, near Whitehead on the Atlantic coast of Nova Scotia, recruit density was ~ 500 recruits dm^{-2} (Ellrich & Scrosati, 2016) and April Chl-*a* was ~ 10 mg m^{-3} (National Aeronautics and Space Administration, 2016), similar to what we found at Sea Spray in that year (Fig. 3). In 2014, Deming Island exhibited a higher Chl-*a* than a location farther south on the Atlantic coast (Tor Bay Provincial Park) and a higher recruit density as well (Petzold & Scrosati, 2014).

Regarding SST, other studies have also noted its importance for the recruitment of *S. balanoides*. For example, on the Atlantic coast of England and France, recruitment was

higher after the cold winters of 2010 and 2011 than after the warmer winter of 2012 (Abernot-Le Gac et al., 2013; Rognstad, Wetthey & Hilbish, 2014). That coast exhibits a winter SST range of 7–13 °C and a laboratory experiment found that the survival of *S. balanoides* embryos decreases from 7 to 13 °C (Rognstad & Hilbish, 2014), potentially explaining their negative SST–recruitment relationship. However, with the low SST range experienced on the Sea Spray coast early every year (below 3 °C in April; Fig. 3), spring recruitment was actually positively related to April SST. Thus, together, these studies suggest that a unimodal relationship between SST early in the year and barnacle recruitment in the spring might exist for *S. balanoides*. At the low SST range that characterizes the Sea Spray coast early in the year, increasing SST might enhance embryo and larval survival. Future research could address these possibilities (past research on SST and larval survival did not consider low enough SST values; Harms, 1984).

Studies on *S. balanoides* recruitment on the NE Atlantic coast have found similar (Hawkins & Hartnoll, 1982; Kendall et al., 1985; Jenkins et al., 2000; Kent, Hawkins & Doncaster, 2003; Rognstad, Wetthey & Hilbish, 2014) and higher (Kendall et al., 1985; Jenkins et al., 2000; Jenkins, Murua & Burrows, 2008) values than our study. In combination, those studies sampled a higher diversity of conditions (wave exposure, elevation, and food supply) than ours, which may explain their higher range of recruitment (see also below in this paragraph). On the NE Pacific coast, intertidal barnacle recruitment is often high. For example, on the coasts of Oregon and northern California (USA), recruits of two barnacle species (*Balanus glandula* and *Chthamalus dalli*) appear throughout most of the year and, considering both species together, can reach mean densities of ~1800 recruits dm⁻² in just one month (Navarrete, Broitman & Menge, 2008). That coast is characterized by upwelling. In many places, the frequent alternation of upwelling with relaxation periods allows for barnacle larvae to remain near the coast (persistent upwelling takes larvae offshore) and favours high levels of nearshore Chl-*a* (above 23 mg m⁻³), ultimately stimulating intertidal barnacle recruitment (Menge & Menge, 2013). The low SST values shortly after ice melt at Sea Spray in April probably further contribute to the lower recruit densities often observed at Sea Spray relative to those coasts. On the other hand, the higher recruitment rates reported for the NE Atlantic (Jenkins et al., 2000) and NE Pacific (Navarrete, Broitman & Menge, 2008) coasts may respond in part to the relative elevation where recruitment was measured. While our study surveyed the lower part of the upper third of the intertidal range, the other studies surveyed middle (Jenkins et al., 2000) and middle-to-low (Navarrete, Broitman & Menge, 2008) elevations. In 2006, we measured barnacle recruitment at the low, middle, and high intertidal zones of wave-exposed habitats at Sea Spray. Mean recruit density was three times higher at the middle zone and two times higher at the low zone than at the high zone (MacPherson & Scrosati, 2008). This suggests that recruitment differences between these coasts, although present, could be smaller if data were available for the same relative elevation.

As April SST and April Chl-*a* contributed to explain the interannual changes in barnacle recruitment at Sea Spray, we examined factors potentially explaining SST and Chl-*a* changes. The positive AT–SST association suggests that climatic phenomena

driving AT in late winter and early spring may indirectly influence recruitment through effects on April SST. The measures of sea ice load that we examined, however, did not explain Chl-*a* changes, so it is not evident whether sea ice has any influence. Lastly, we found evidence that wind direction influences Chl-*a* at Sea Spray. Our results suggest that onshore winds would take phytoplankton-limited surface waters from the central Northumberland Strait to the coast, while alongshore winds would help to retain phytoplankton near the coast, indirectly favouring barnacle recruitment.

Overall, this appears to be the first study monitoring invertebrate recruitment from NW Atlantic rocky intertidal habitats for more than a decade. The continuation of this project over the years should consolidate our understanding of recruitment fluctuations and the role of seawater temperature and planktonic food supply. Surveying more locations would provide the spatial dimension that single-location data cannot do by design. To this aim, in 2014 we began monitoring barnacle recruitment in wave-exposed locations along the Atlantic coast of Nova Scotia ([Scrosati & Petzold, 2016](#)), but it is early to identify interannual trends in those places. Continued surveys in Atlantic Canada should enrich benthic–pelagic coupling theory, as shown by years of recruitment studies on other coasts ([Navarrete, Broitman & Menge, 2008](#); [Menge & Menge, 2013](#); [Menge et al., 2015](#)). Ultimately, such datasets should facilitate the prediction of ecological responses to environmental changes ([Mieszkowska et al., 2014](#); [Schiel et al., 2016](#)).

ACKNOWLEDGEMENTS

We thank Thomas Guyondet and Edward Horne for comments on environmental analyses and Daniel Rittschof and an anonymous reviewer for comments on the original manuscript.

ADDITIONAL INFORMATION AND DECLARATIONS

Funding

This study was funded by grants awarded to R.A. Scrosati by the Canada Research Chairs program (CRC; grant number 210283), the Canada Foundation for Innovation (CFI; grant number 202034), and the Natural Sciences and Engineering Research Council of Canada (NSERC, Discovery grant number 311624). The funders had no role in study design, data collection and analysis, decision to publish, or preparation of the manuscript.

Grant Disclosures

The following grant information was disclosed by the authors:

Canada Research Chairs program (CRC): 210283.

The Canada Foundation for Innovation (CFI): 202034.

The Natural Sciences and Engineering Research Council of Canada (NSERC, Discovery grant): 311624.

Competing Interests

The authors declare that they have no competing interests.

Author Contributions

- Ricardo A. Scrosati conceived, designed, and performed the experiments, analyzed the data, contributed reagents/materials/analysis tools, wrote the paper, prepared figures and/or tables, and reviewed drafts of the paper.
- Julius A. Ellrich analyzed the data, contributed reagents/materials/analysis tools, prepared figures and/or tables, and reviewed drafts of the paper.

Data Deposition

The following information was supplied regarding data availability:

The full dataset is available through the corresponding PeerJ Preprints article: Scrosati RA, Ellrich JA. 2016. Intertidal barnacle recruitment in Nova Scotia (Canada) between 2005–2016: relationships with sea surface temperature and phytoplankton abundance. PeerJ Preprints 4:e2355v1 DOI [10.7287/peerj.preprints.2355v1](https://doi.org/10.7287/peerj.preprints.2355v1).

Supplemental Information

Supplemental information for this article can be found online at <http://dx.doi.org/10.7717/peerj.2623#supplemental-information>.

REFERENCES

- Abernot-Le Gac C, Antajan E, Devreker D, Drévès L, Martin J, Monbet P, Schapira M, Schlaich I. 2013. *Surveillance écologique et halieutique du site de Flamanville, année 2012*. Ifremer Report RST LER/BO/13.004.
- Anderson DR. 2008. *Model-Based Inference in the Life Sciences: A Primer on Evidence*. New York: Springer.
- Anderson DT. 1994. *Barnacles. Structure, Function, Development, and Evolution*. London: Chapman & Hall.
- Barbosa ACC, Gomes CC, Pereira GC, Bueno M, Flores AAV. 2016. Local biological drivers, not remote forcing, predict settlement rate to a subtropical barnacle population. *Marine Ecology Progress Series* 543:201–208 DOI [10.3354/meps11589](https://doi.org/10.3354/meps11589).
- Barnes H. 1956. *Balanus balanoides* (L.) in the Firth of Clyde: the development and annual variation of the larval population, and the causative factors. *Journal of Animal Ecology* 25(1):72–84 DOI [10.2307/1851](https://doi.org/10.2307/1851).
- Beck MW, Heck KL, Able KW, Childers DL, Eggleston DB, Gillanders BM, Halpern B, Hays CG, Hoshino K, Minello TJ, Orth RJ, Sheridan PF, Weinstein MP. 2001. The identification, conservation, and management of estuarine and marine nurseries for fish and invertebrates. *BioScience* 51(8):633–641 DOI [10.1641/0006-3568\(2001\)051\[0633:TICAMO\]2.0.CO;2](https://doi.org/10.1641/0006-3568(2001)051[0633:TICAMO]2.0.CO;2).
- Belt KM, Cole SWB, Scrosati RA. 2009. Intertidal barnacles as indicators of the intensity of scour by sea ice. *Marine Ecology Progress Series* 381:183–187 DOI [10.3354/meps07935](https://doi.org/10.3354/meps07935).
- Bertness MD. 1989. Intraspecific competition and facilitation in a northern acorn barnacle population. *Ecology* 70(1):257–268 DOI [10.2307/1938431](https://doi.org/10.2307/1938431).
- Bertness MD, Gaines SD, Wahle RA. 1996. Wind-driven settlement patterns in the acorn barnacle *Semibalanus balanoides*. *Marine Ecology Progress Series* 137:103–110 DOI [10.3354/meps137103](https://doi.org/10.3354/meps137103).
- Bousfield EL. 1954. The distribution and spawning seasons of barnacles on the Atlantic coast of Canada. *Bulletin of the National Museum of Canada* 132:112–154.

- Caley MJ, Carr MH, Hixon MA, Hughes TP, Jones GP, Menge BA. 1996. Recruitment and the local dynamics of open marine populations. *Annual Review of Ecology and Systematics* 27(1):477–500 DOI 10.1146/annurev.ecolsys.27.1.477.
- Canadian Ice Service. 2016. Latest ice conditions. Available at <https://www.ec.gc.ca/glaces-ice>.
- Cole SWB, Scrosati RA, Tam JC, Sussmann AV. 2011. Regional decoupling between NW Atlantic barnacle recruit and adult density is related to changes in pelagic food supply and benthic disturbance. *Journal of Sea Research* 65(1):33–37 DOI 10.1016/j.seares.2010.06.006.
- Crisp DJ. 1968. Differences between North American and European populations of *Balanus balanoides* revealed by transplantation. *Journal of the Fisheries Research Board of Canada* 25(12):2633–2641 DOI 10.1139/f68-233.
- Drouin CA, Bourget E, Tremblay R. 2002. Larval transport processes of barnacle larvae in the vicinity of the interface between two genetically different populations of *Semibalanus balanoides*. *Marine Ecology Progress Series* 229:165–172 DOI 10.3354/meps229165.
- Ellrich JA, Scrosati RA. 2016. Water motion modulates predator nonconsumptive limitation of prey recruitment. *Ecosphere* 7(7):e1402 DOI 10.1002/ecs2.1402.
- Ellrich JA, Scrosati RA, Molis M. 2015. Predator nonconsumptive effects on prey recruitment weaken with recruit density. *Ecology* 96(3):611–616 DOI 10.1890/14-1856.1.
- Ellrich JA, Scrosati RA, Romoth K, Molis M. 2016. Adult prey neutralizes predator nonconsumptive limitation of prey recruitment. *PLoS ONE* 11(4):e154572 DOI 10.1371/journal.pone.0154572.
- Environment Canada. 2016. Environment and natural resources. Available at <https://www.canada.ca/en/services/environment/index.html>.
- Galbraith PS, Chassé J, Nicot P, Caverhill C, Gilbert D, Pettigrew B, Lefavre D, Brickman D, Devine L, Lafleur C. 2015. Physical oceanographic conditions in the Gulf of St. Lawrence in 2014. In: *DFO Canadian Science Advisory Secretariat Research Document 2015/032*. Ottawa: Fisheries and Oceans Canada, Canadian Science Advisory Secretariat.
- Galbraith PS, Larouche P, Chassé J, Petrie P. 2012. Sea-surface temperature in relation to air temperature in the Gulf of St. Lawrence: interdecadal variability and long-term trends. *Deep-Sea Research II* 77–80:10–20 DOI 10.1016/j.dsr2.2012.04.001.
- Gyory J, Pineda J, Solow A. 2013. Turbidity triggers larval release by the intertidal barnacle *Semibalanus balanoides*. *Marine Ecology Progress Series* 476:141–151 DOI 10.3354/meps10186.
- Harms J. 1984. Influence of water temperature on larval development of *Elminius modestus* and *Semibalanus balanoides* (Crustacea, Cirripedia). *Helgoländer Meeresuntersuchungen* 38(2):123–134.
- Hawkins SJ, Hartnoll RG. 1982. Settlement patterns of *Semibalanus balanoides* (L.) in the Isle of Man (1977–1981). *Journal of Experimental Marine Biology and Ecology* 62(3):271–283 DOI 10.1016/0022-0981(82)90207-6.
- Jarrett JN. 2003. Seasonal variation in larval condition and postsettlement performance of the barnacle *Semibalanus balanoides*. *Ecology* 84(2):384–390 DOI 10.1890/0012-9658(2003)084[0384:SVILCA]2.0.CO;2.
- Jenkins SR, Åberg P, Cervin G, Coleman RA, Delany J, Della Santina P, Hawkins SJ, LaCroix E, Myers AA, Lindegarth M, Power A-M, Roberts MF, Hartnoll RG. 2000. Spatial and temporal variation in settlement and recruitment of the intertidal barnacle *Semibalanus balanoides* (L.) (Crustacea: Cirripedia) over a European scale. *Journal of Experimental Marine Biology and Ecology* 243(2):209–225 DOI 10.1016/S0022-0981(99)00121-5.

- Jenkins SR, Murua J, Burrows MT. 2008. Temporal changes in the strength of density-dependent mortality and growth in intertidal barnacles. *Journal of Animal Ecology* 77(3):573–584 DOI 10.1111/j.1365-2656.2008.01366.x.
- Jonsson PR, Berntsson KM, Larsson AI. 2004. Linking larval supply to recruitment: flow-mediated control of initial adhesion of barnacle larvae. *Ecology* 85(10):2850–2859 DOI 10.1890/03-0565.
- Kendall MA, Bowman RS, Williamson P, Lewis JR. 1985. Annual variation in the recruitment of *Semibalanus balanoides* on the North Yorkshire coast 1969–1981. *Journal of the Marine Biological Association of the United Kingdom* 65(4):1009–1030 DOI 10.1017/S0025315400019482.
- Kent A, Hawkins SJ, Doncaster CP. 2003. Population consequences of mutual attraction between settling and adult barnacles. *Journal of Animal Ecology* 72(6):941–952 DOI 10.1046/j.1365-2656.2003.00762.x.
- Lathlean JA, Ayre DJ, Minchinton TE. 2013. Temperature variability at the larval scale affects early survival and growth of an intertidal barnacle. *Marine Ecology Progress Series* 475:155–166 DOI 10.3354/meps10105.
- Leonard GH. 2000. Latitudinal variation in species interactions: a test in the New England rocky intertidal zone. *Ecology* 81(4):1015–1030 DOI 10.1890/0012-9658(2000)081[1015:LVISIA]2.0.CO;2.
- Leonard GH, Ewanchuk PJ, Bertness MD. 1999. How recruitment, intraspecific interactions, and predation control species borders in a tidal estuary. *Oecologia* 118(4):492–502 DOI 10.1007/s004420050752.
- MacPherson EA, Scrosati R. 2008. Population structure of the barnacle *Semibalanus balanoides* (Cirripedia) across intertidal environmental stress gradients in northern Nova Scotia, Canada. *Crustaceana* 81(6):725–736 DOI 10.1163/156854008784513393.
- MacPherson EA, Scrosati R, Chareka P. 2008. Barnacle recruitment on ice-scoured shores in eastern Canada. *Journal of the Marine Biological Association of the United Kingdom* 88(2):289–291 DOI 10.1017/S0025315408000714.
- Mazzuco ACA, Christofoletti RA, Pineda J, Starczak VR, Ciotti AM. 2015. Temporal variation in intertidal community recruitment and its relationships to physical forcings, chlorophyll-*a* concentration and sea surface temperature. *Marine Biology* 162(9):1705–1725 DOI 10.1007/s00227-015-2689-6.
- Menge BA, Gouhier TC, Hacker SD, Chan F, Nielsen KJ. 2015. Are meta-ecosystems organized hierarchically? A model and test in rocky intertidal habitats. *Ecological Monographs* 85(2):213–233 DOI 10.1890/14-0113.1.
- Menge BA, Hacker SD, Freidenburg T, Lubchenco J, Craig R, Rilov G, Noble M, Richmond E. 2011. Potential impact of climate-related changes is buffered by differential responses to recruitment and interactions. *Ecological Monographs* 81(3):493–509 DOI 10.1890/10-1508.1.
- Menge BA, Menge DNL. 2013. Dynamics of coastal meta-ecosystems: the intermittent upwelling hypothesis and a test in rocky intertidal regions. *Ecological Monographs* 83(3):283–310 DOI 10.1890/12-1706.1.
- Mieszkowska N, Burrows MT, Pannacciulli FG, Hawkins SJ. 2014. Multidecadal signals within co-occurring intertidal barnacles *Semibalanus balanoides* and *Chthamalus* spp. linked to the Atlantic Multidecadal Oscillation. *Journal of Marine Systems* 133:70–76 DOI 10.1016/j.jmarsys.2012.11.008.
- Minchinton TE, Scheibling RE. 1991. The influence of larval supply and settlement on the population structure of barnacles. *Ecology* 72(5):1867–1879 DOI 10.2307/1940984.
- National Aeronautics and Space Administration (NASA). 2016. SeaDAS. Available at <http://seadas.gsfc.nasa.gov>.

- Navarrete SA, Broitman BR, Menge BA. 2008. Interhemispheric comparison of recruitment to intertidal communities: pattern persistence and scales of variation. *Ecology* **89**(5):1308–1322 DOI 10.1890/07-0728.1.
- Palumbi SR, Pinsky ML. 2014. Marine dispersal, ecology, and conservation. In: Bertness MD, Bruno JF, Silliman BR, Stachowicz JJ, eds. *Marine Community Ecology and Conservation*. Sunderland: Sinauer, 57–83.
- Payne NL, Smith JA, van der Meulen DE, Taylor MD, Watanabe YY, Takahashi A, Marzullo TA, Gray CA, Cadiou G, Suthers IM. 2016. Temperature dependence of fish performance in the wild: links with species biogeography and physiological thermal tolerance. *Functional Ecology* **30**(6):903–912 DOI 10.1111/1365-2435.12618.
- Petraitis PS, Vidargas N. 2006. Marine intertidal organisms found in experimental clearings on sheltered shores in the Gulf of Maine, USA. *Ecology* **87**(3):796 DOI 10.1890/05-0232a.
- Petzold W, Scrosati RA. 2014. Differential recolonization of Atlantic intertidal habitats after disturbance reveals potential bottom-up community regulation. *F1000Research* **3**:247 DOI 10.12688/f1000research.5545.1.
- Pineda J, Riebenschm D, Medeiros-Bergen D. 2002. *Semibalanus balanoides* in winter and spring: larval concentration, settlement, and substrate occupancy. *Marine Biology* **140**(4):789–800 DOI 10.1007/s00227-001-0751-z.
- Rognstad RL, Hilbish TJ. 2014. Temperature-induced variation in the survival of brooded embryos drives patterns of recruitment and abundance in *Semibalanus balanoides*. *Journal of Experimental Marine Biology and Ecology* **461**:357–363 DOI 10.1016/j.jembe.2014.09.012.
- Rognstad RL, Wethey DS, Hilbish TJ. 2014. Connectivity and population repatriation: limitations of climate and input into the larval pool. *Marine Ecology Progress Series* **495**:175–183 DOI 10.3354/meps10590.
- Schiel DR, Lilley SA, South PM, Coggins JHJ. 2016. Decadal changes in sea surface temperature, wave forces, and intertidal structure in New Zealand. *Marine Ecology Progress Series* **548**:77–95 DOI 10.3354/meps11671.
- Scrosati R, Heaven C. 2006. Field technique to quantify intensity of scouring by sea ice in rocky intertidal habitats. *Marine Ecology Progress Series* **320**:293–295 DOI 10.3354/meps320293.
- Scrosati R, Heaven C. 2007. Spatial trends in community richness, diversity, and evenness across rocky intertidal environmental stress gradients in eastern Canada. *Marine Ecology Progress Series* **342**:1–14 DOI 10.3354/meps342001.
- Scrosati RA, Petzold W. 2016. Pelagic food supply and drift sea ice influence intertidal community structure along the Atlantic Canadian coast. *F1000Research* **5**:800 DOI 10.7490/f1000research.1111810.1.
- Seabra R, Wethey DS, Santos AM, Gomes F, Lima FP. 2016. Equatorial range limits of an intertidal ectotherm are more linked to water than air temperature. *Global Change Biology* **22**(10):3320–3331 DOI 10.1111/gcb.13321.
- Selkoe KA, D'Aloia CC, Crandall ED, Iacchei M, Liggins L, Puritz JB, von der Heyden S, Toonen RJ. 2016. A decade of seascape genetics: contributions to basic and applied marine connectivity. *Marine Ecology Progress Series* **554**:1–19 DOI 10.3354/meps11792.
- Singarajah KV, Moyses J, Knight-Jones EW. 1967. The effect of feeding upon the phototactic behaviour of cirripede nauplii. *Journal of Experimental Marine Biology and Ecology* **1**(2):144–153 DOI 10.1016/0022-0981(67)90011-1.
- Sokal RR, Rohlf FJ. 2012. *Biometry. The Principles and Practice of Statistics in Biological Research*. New York: W. H. Freeman.