

CORRECTION

Open Access



Correction to: The association of reduced left ventricular strains with increased extracellular volume and their collective impact on clinical outcomes

Chunna Jin^{1,3}, Jonathan Weber¹, Harsimar Singh¹, Kathleen Gliganic¹ and J. Jane Cao^{1,2*}

Correction to: *J Cardiovasc Magn Reson* (2021) 23:93

<https://doi.org/10.1186/s12968-021-00776-7>

After publication of the original article [1] the authors found a minor error in the article:

- Figures 2 and 3 of the article incorrectly labeled Mean Radial Strain (%) as a negative value instead of positive. This affects the displayed scale of radial strain on the y-axis of plots within both figures. In the initial submission we presented the radial strain in a positive scale. In order to keep the presentation consistent with longitudinal and circumferential strains we decided to adjust the display scale of radial strain in

the final submission which we believe is helpful for the reader to interpret the findings. Unfortunately, the negative scale on y-axis was carried out for all three strains. After careful examination of the data used to create the plots, we concluded that the error lies with the y-axis label alone and not the data nor relationships among variables displayed in Figs. 2 and 3. This minor error should not affect the interpretation of results or implications of our work.

The original article has been updated to amend the errors in Figs. 2 and 3. The incorrect and correct figures are shown in this erratum (Figs. 1, 2, 3 and 4).

The original article can be found online at <https://doi.org/10.1186/s12968-021-00776-7>.

*Correspondence: Jane.Cao@chsli.org

¹ St Francis Hospital & Heart Center, 100 Port Washington Blvd, Roslyn, NY 11576, USA

Full list of author information is available at the end of the article



© The Author(s) 2021. **Open Access** This article is licensed under a Creative Commons Attribution 4.0 International License, which permits use, sharing, adaptation, distribution and reproduction in any medium or format, as long as you give appropriate credit to the original author(s) and the source, provide a link to the Creative Commons licence, and indicate if changes were made. The images or other third party material in this article are included in the article's Creative Commons licence, unless indicated otherwise in a credit line to the material. If material is not included in the article's Creative Commons licence and your intended use is not permitted by statutory regulation or exceeds the permitted use, you will need to obtain permission directly from the copyright holder. To view a copy of this licence, visit <http://creativecommons.org/licenses/by/4.0/>. The Creative Commons Public Domain Dedication waiver (<http://creativecommons.org/publicdomain/zero/1.0/>) applies to the data made available in this article, unless otherwise stated in a credit line to the data.

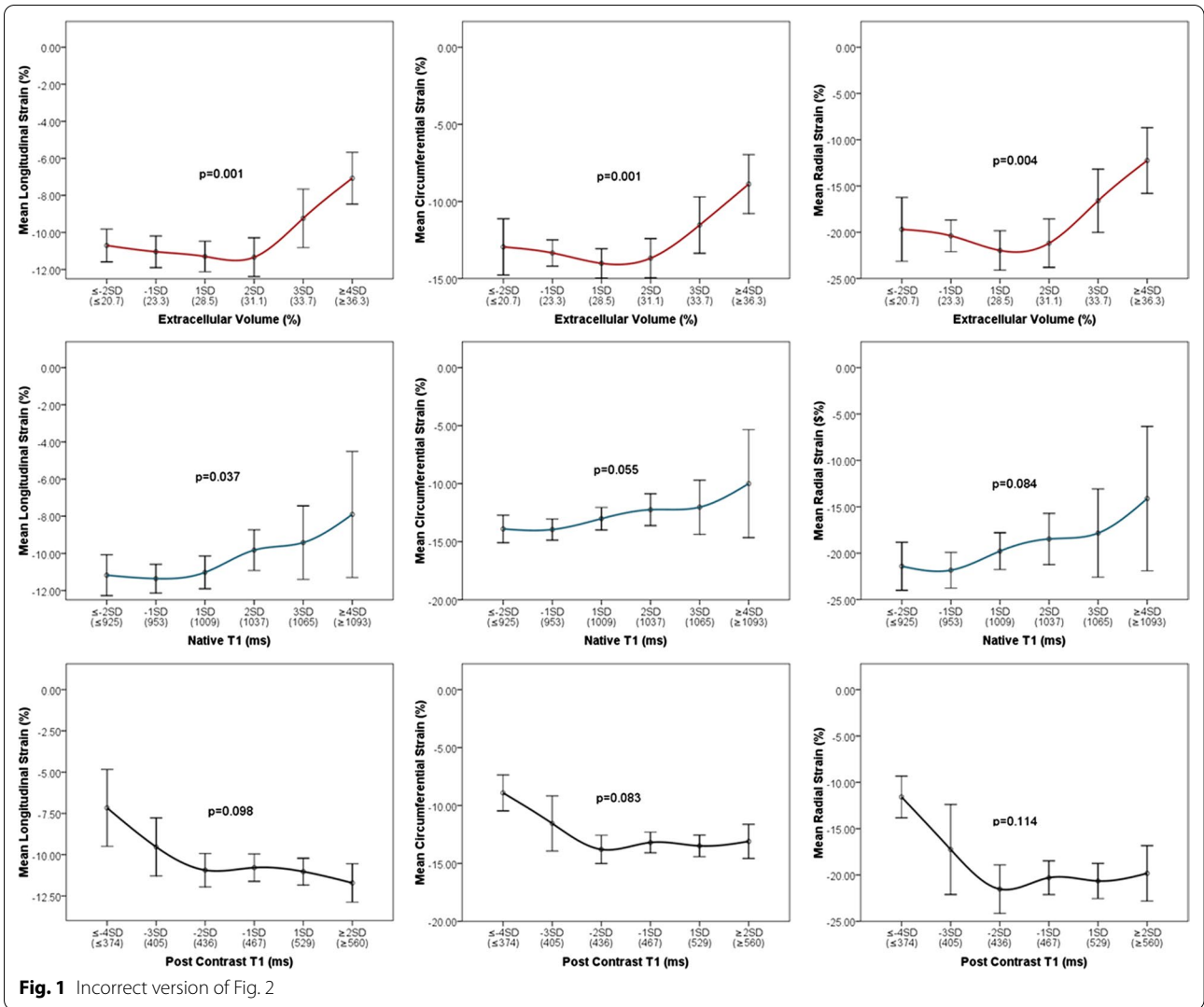
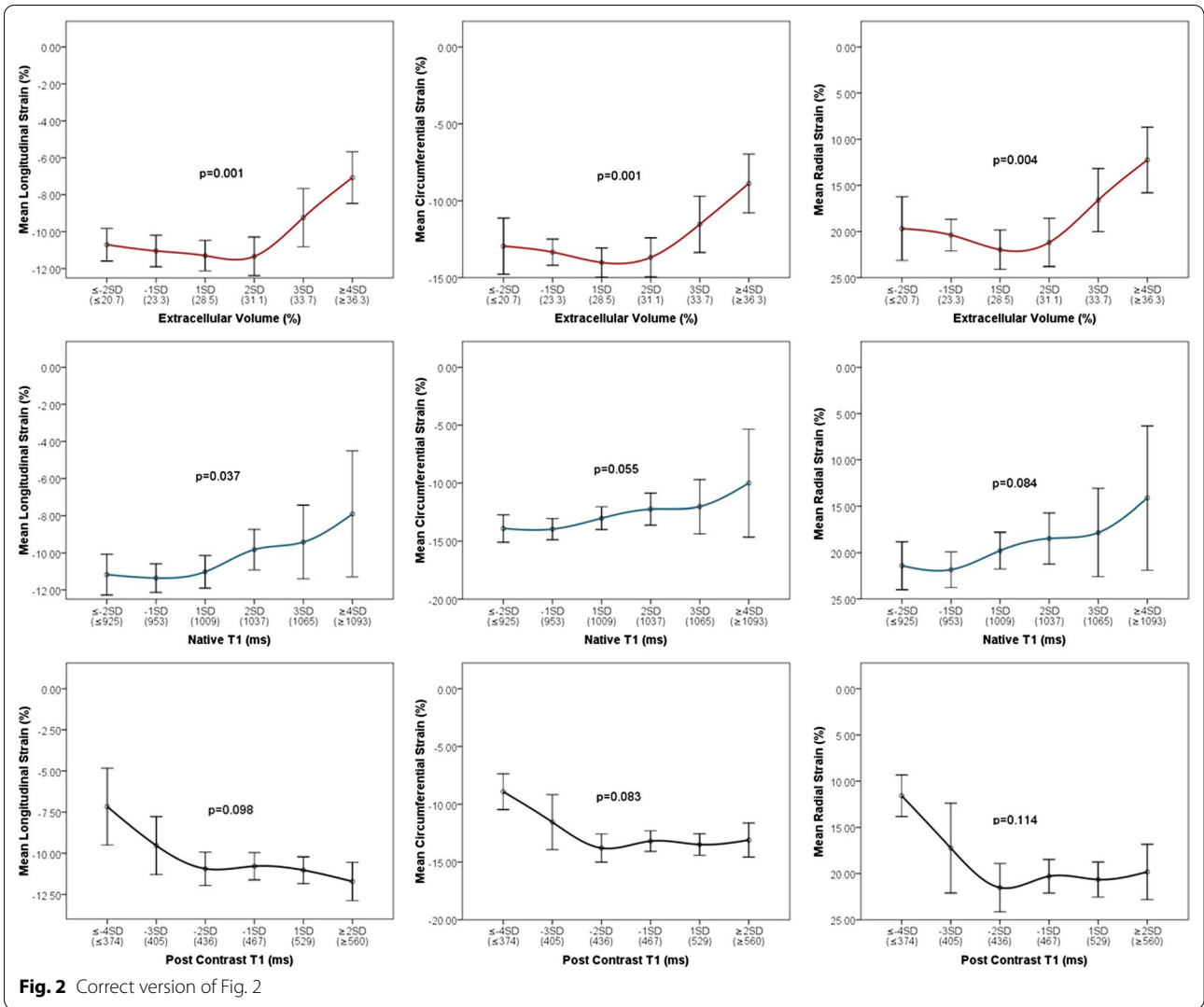
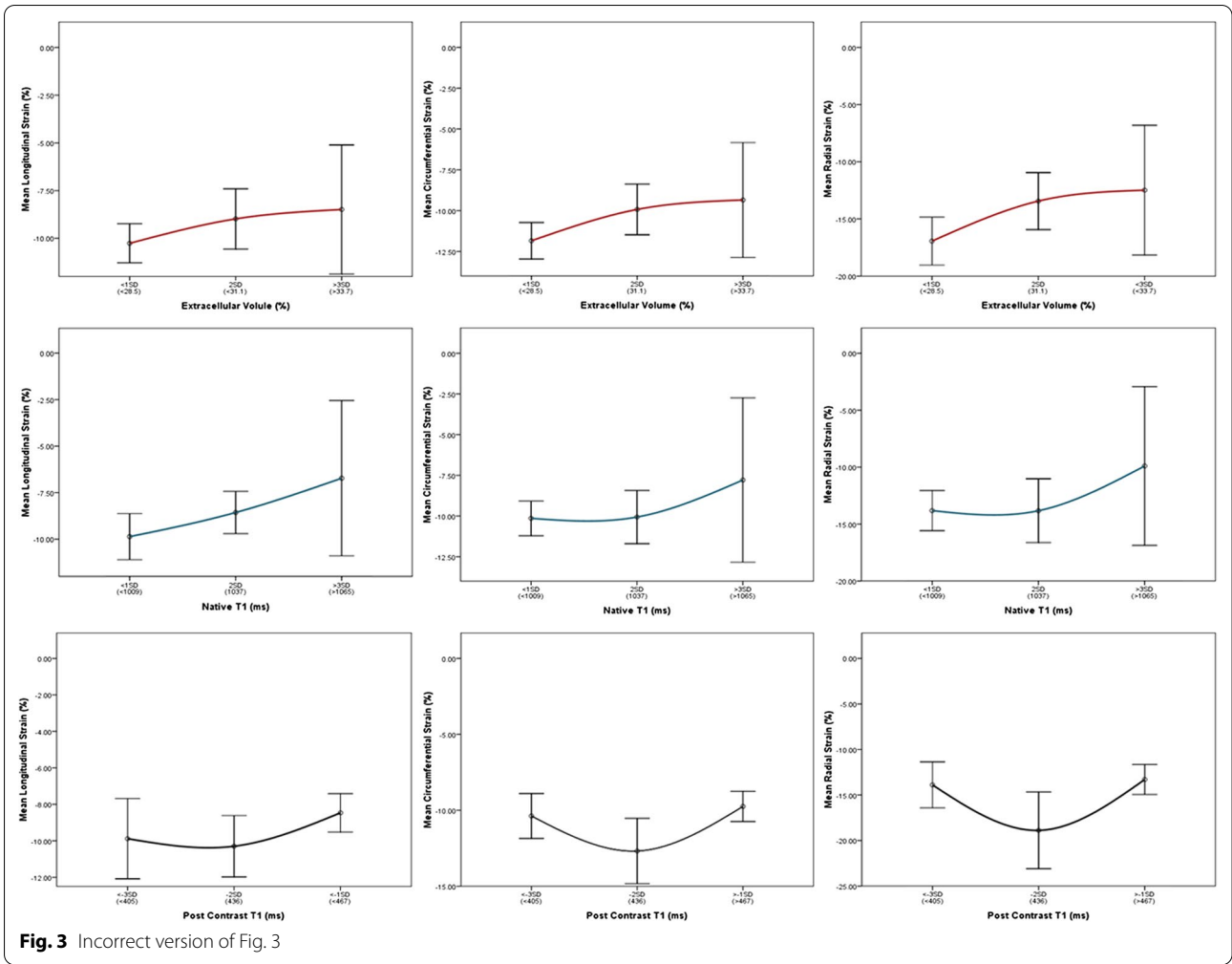
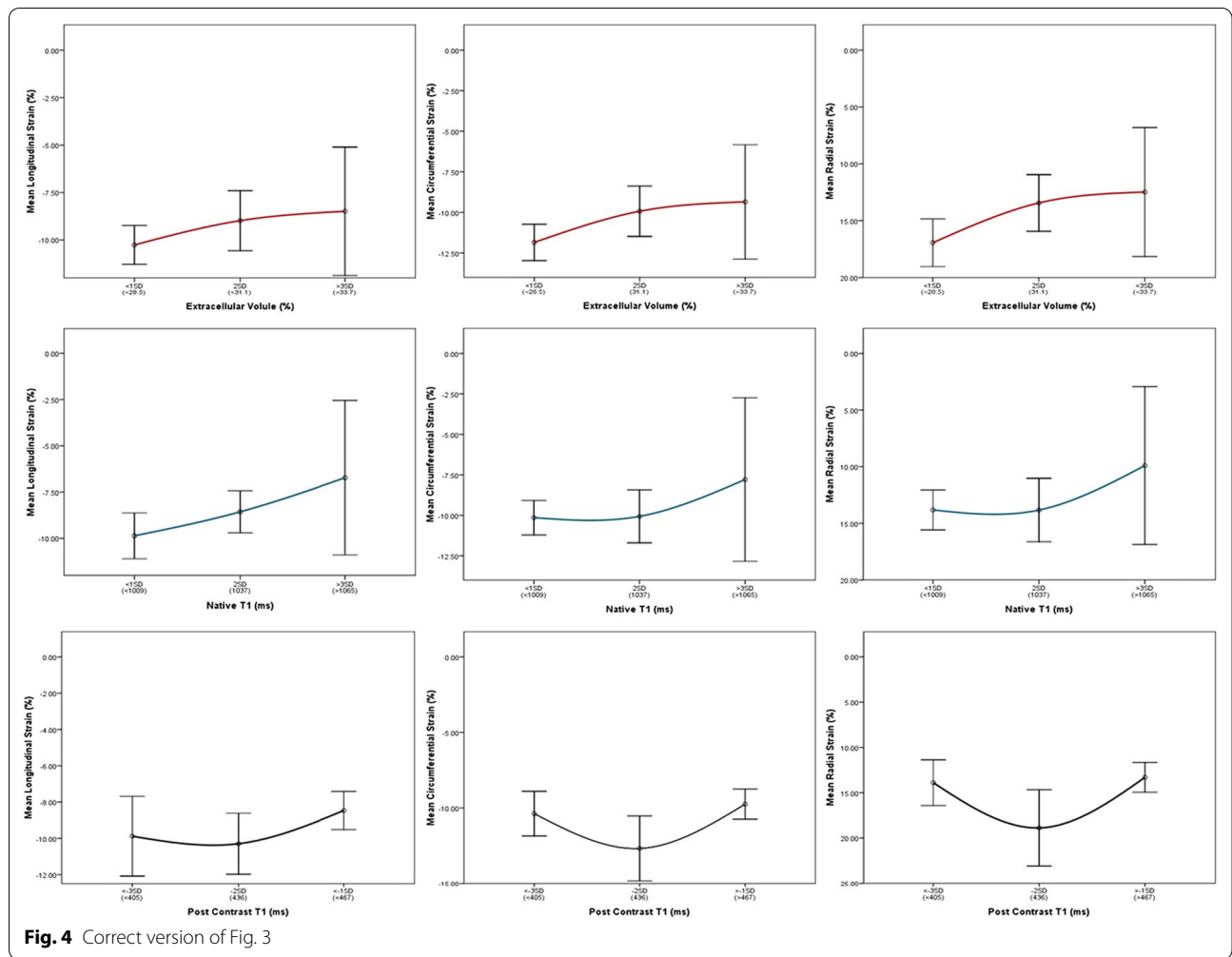


Fig. 1 Incorrect version of Fig. 2







Author details

¹St Francis Hospital & Heart Center, 100 Port Washington Blvd, Roslyn, NY 11576, USA. ²State University of New York at Stony Brook, 100 Nicholls Road, Stony Brook, NY 11794, USA. ³Department of Cardiology, Second Affiliated Hospital of Zhejiang University, Hangzhou 310009, Zhejiang, China.

impact on clinical outcomes. *J Cardiovasc Magn Reson*. 2021;23:93. <https://doi.org/10.1186/s12968-021-00776-7>.

Publisher’s Note

Springer Nature remains neutral with regard to jurisdictional claims in published maps and institutional affiliations.

Published online: 18 November 2021

Reference

1. Jin C, Weber J, Singh H, Gliganic K, Cao JJ. The association of reduced left ventricular strains with increased extracellular volume and their collective