

## Supplemental Online Content

Hashemian M, Conners KM, Joo J, et al. Racial disparities in mortality in the District of Columbia. *JAMA Netw Open*. 2025;8(3):e252290. doi:10.1001/jamanetworkopen.2025.2290

**eFigure 1.** Race and ethnicity distribution in the District of Columbia

**eFigure 2.** Leading causes of death in the District of Columbia by ward in 2020

**eFigure 3.** Age-adjusted mortality rate in Black, White, and overall population before and after excluding deaths in 2020

**eFigure 4.** Rate ratios comparing Black individuals to White individuals before and after excluding deaths in 2020

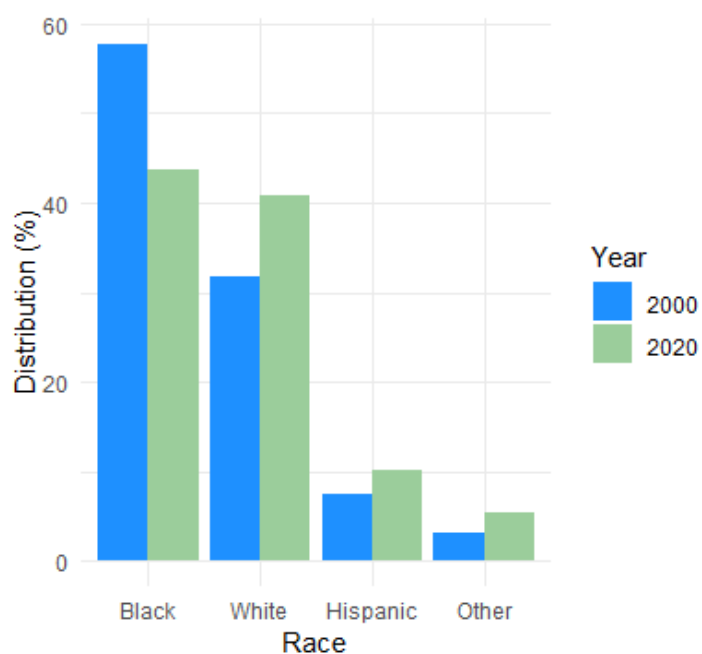
**eFigure 5.** Rate ratios comparing Black individuals to White individuals by sex before and after excluding deaths in 2020

**eFigure 6.** Joinpoint analysis considering autocorrelated errors for age-adjusted mortality rate in Black, White, and overall population after excluding deaths in 2020

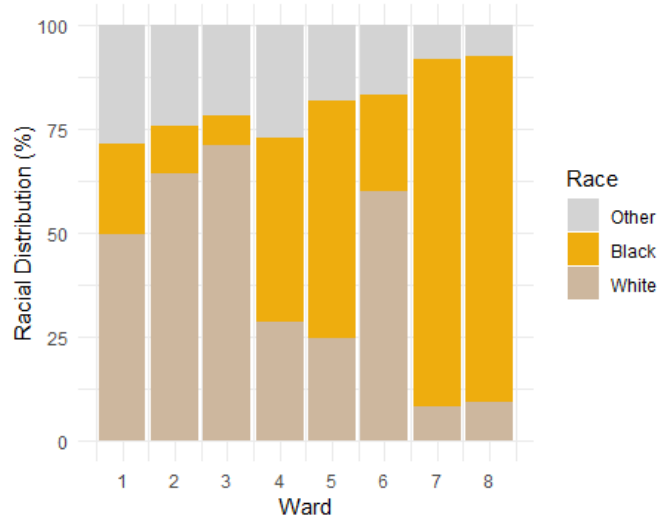
This supplemental material has been provided by the authors to give readers additional information about their work.

**eFigure 1. Race and Ethnicity Distribution in the District of Columbia (A) by year, (B) by Ward in 2020**

(A)

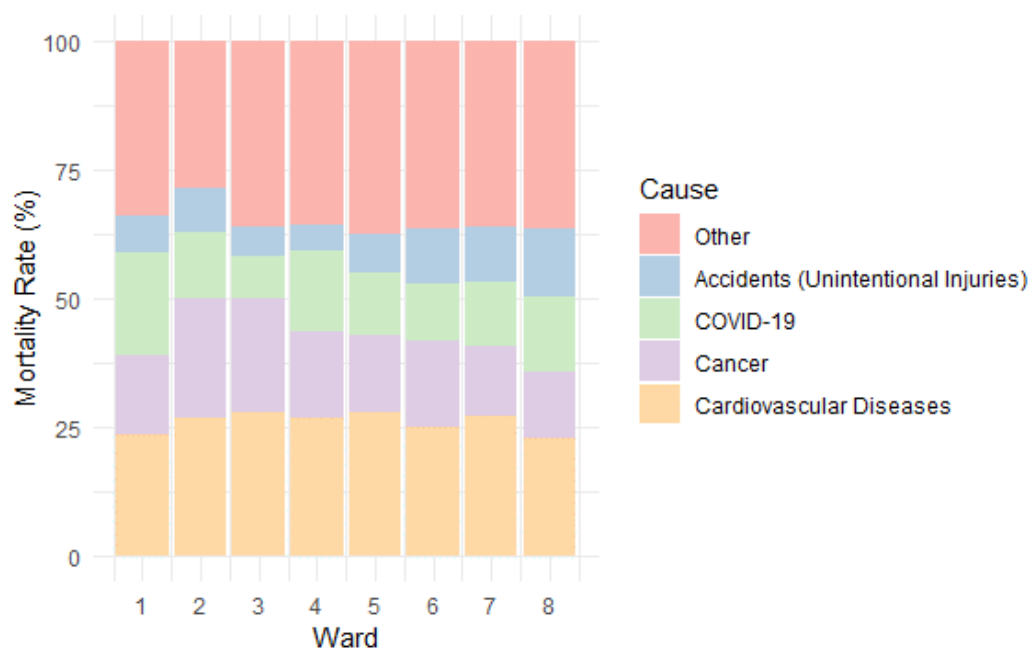


(B)



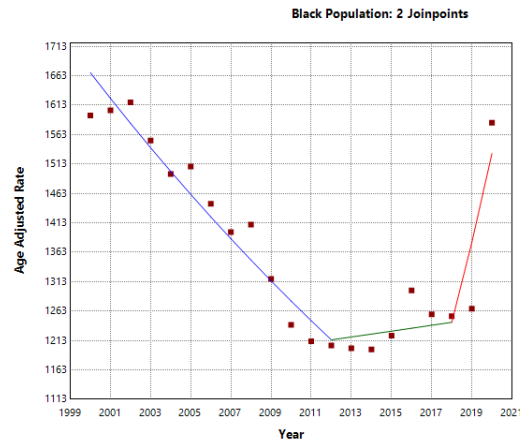
\* Other: Hispanic or Latino, Asian, American Indian or Alaska Native, Native Hawaiian or other Pacific Islander, Other race, and Multiracial. Hispanics/Latinos can be of any race.

**eFigure 2. The leading causes of death in the District of Columbia by Ward in 2020**

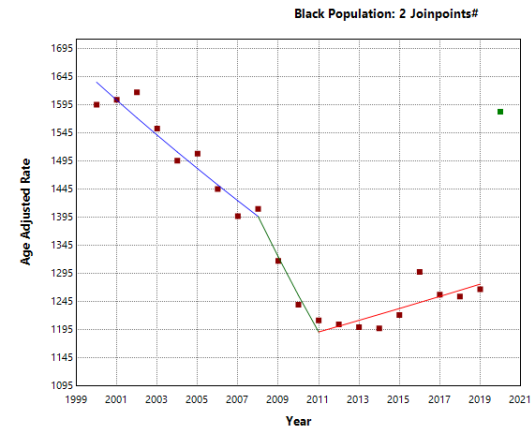


**eFigure 3, Age-adjusted mortality rate in Black, White, and overall population before and after excluding deaths occurred in 2020**

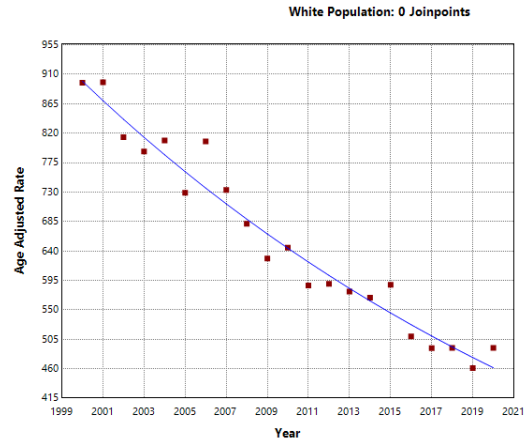
**(A) All-cause mortality before (left) and after (right) excluding 2020**



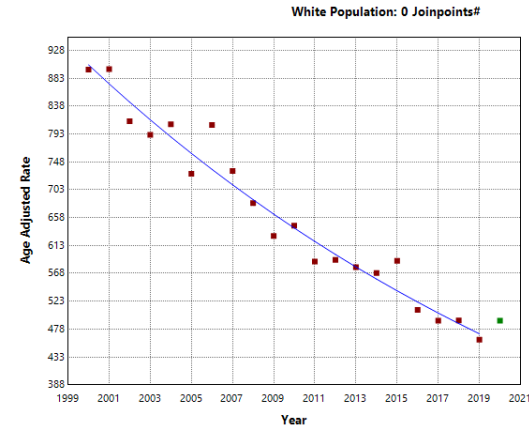
\* Indicates that the Annual Percent Change (APC) is significantly different from zero at the alpha = 0.05 level.  
Final Selected Model: 2 Joinpoints.



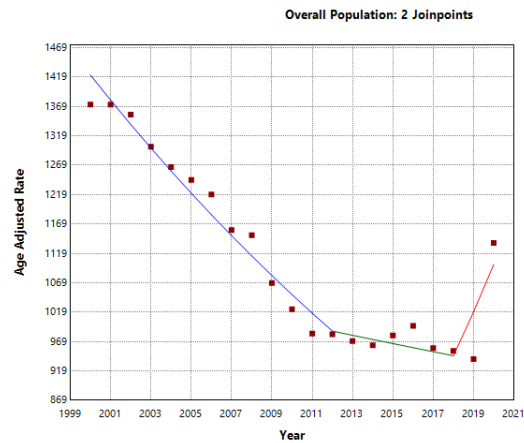
\* Indicates that the Annual Percent Change (APC) is significantly different from zero at the alpha = 0.05 level.  
# Observed Y Value 2020 was excluded from the model fitting.  
Final Selected Model: 2 Joinpoints.



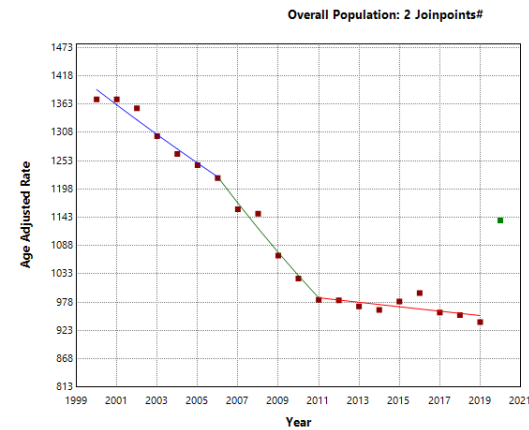
\* Indicates that the Annual Percent Change (APC) is significantly different from zero at the alpha = 0.05 level.  
Final Selected Model: 0 Joinpoints.



\* Indicates that the Annual Percent Change (APC) is significantly different from zero at the alpha = 0.05 level.  
# Observed Y Value 2020 was excluded from the model fitting.  
Final Selected Model: 0 Joinpoints.

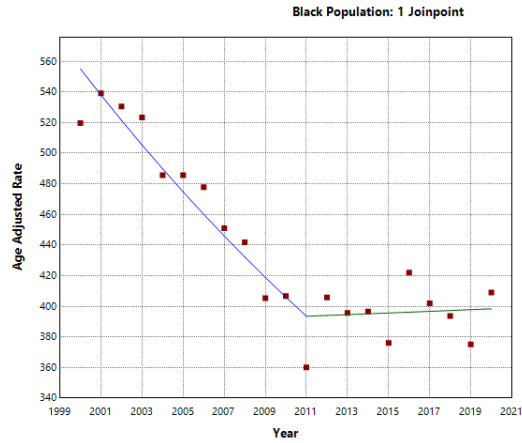


\* Indicates that the Annual Percent Change (APC) is significantly different from zero at the alpha = 0.05 level.  
Final Selected Model: 2 Joinpoints.

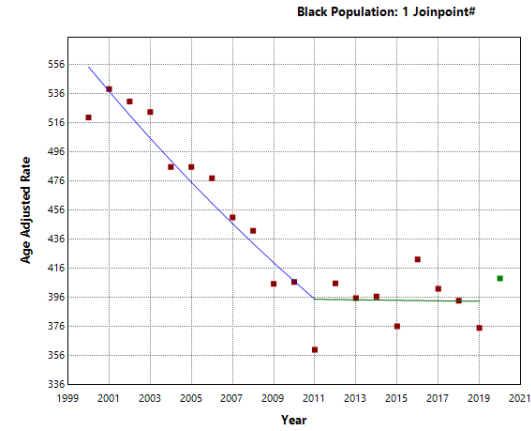


\* Indicates that the Annual Percent Change (APC) is significantly different from zero at the alpha = 0.05 level.  
# Observed Y Value 2020 was excluded from the model fitting.  
Final Selected Model: 2 Joinpoints.

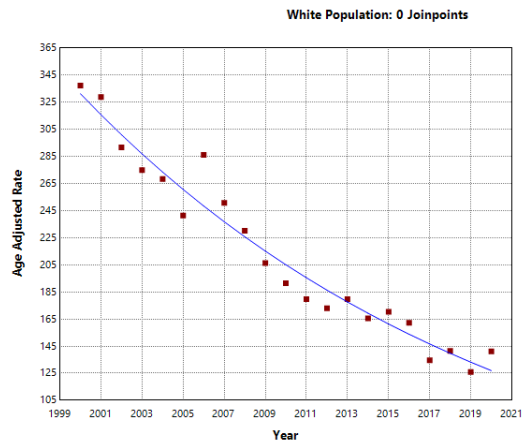
**(B) CVD mortality before (left) and after (right) excluding 2020**



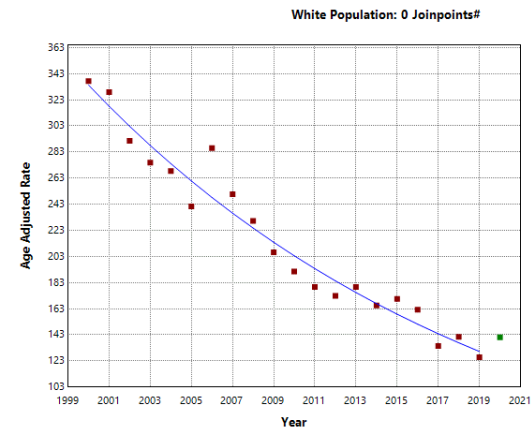
\* Indicates that the Annual Percent Change (APC) is significantly different from zero at the alpha = 0.05 level.  
Final Selected Model: 1 Joinpoint.



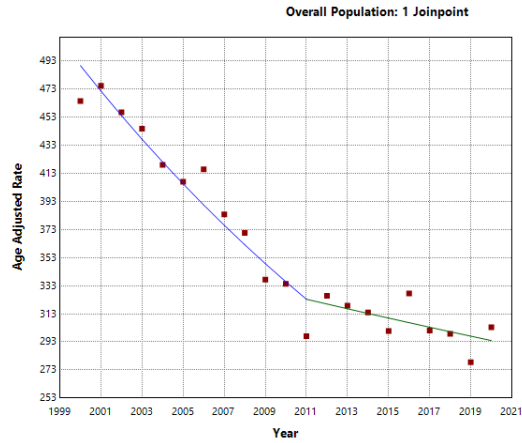
\* Indicates that the Annual Percent Change (APC) is significantly different from zero at the alpha = 0.05 level.  
# Observed Y Value 2020 was excluded from the model fitting.  
Final Selected Model: 1 Joinpoint.



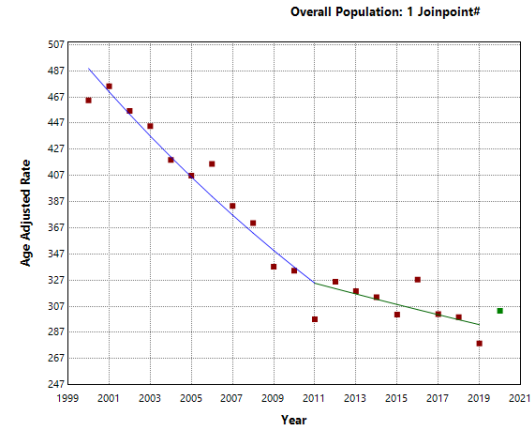
\* Indicates that the Annual Percent Change (APC) is significantly different from zero at the alpha = 0.05 level.  
Final Selected Model: 0 Joinpoints.



\* Indicates that the Annual Percent Change (APC) is significantly different from zero at the alpha = 0.05 level.  
# Observed Y Value 2020 was excluded from the model fitting.  
Final Selected Model: 0 Joinpoints.

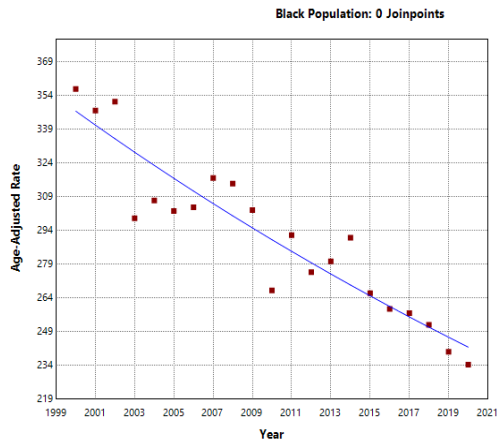


\* Indicates that the Annual Percent Change (APC) is significantly different from zero at the alpha = 0.05 level.  
Final Selected Model: 1 Joinpoint.

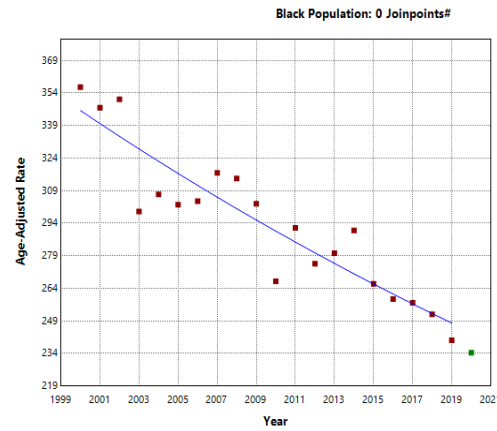


\* Indicates that the Annual Percent Change (APC) is significantly different from zero at the alpha = 0.05 level.  
# Observed Y Value 2020 was excluded from the model fitting.  
Final Selected Model: 1 Joinpoint.

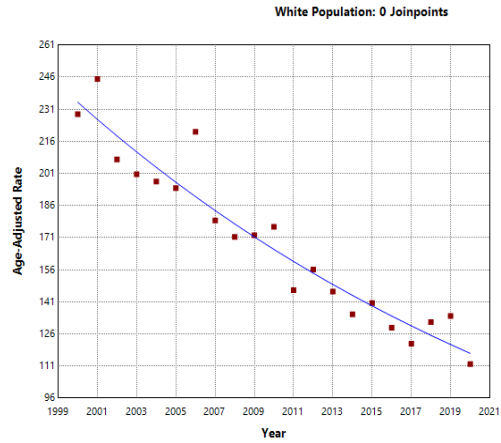
### C) Cancer mortality before (left) and after (right) excluding 2020



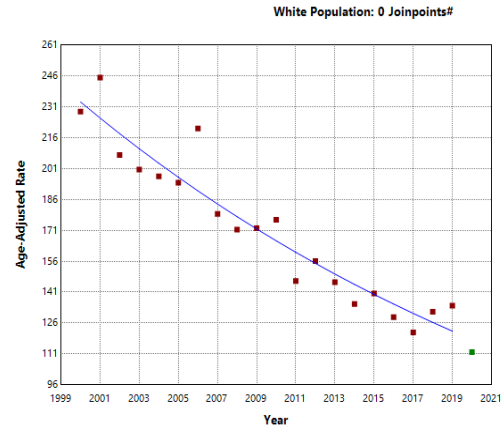
\* Indicates that the Annual Percent Change (APC) is significantly different from zero at the alpha = 0.05 level.  
Final Selected Model: 0 Joinpoints.



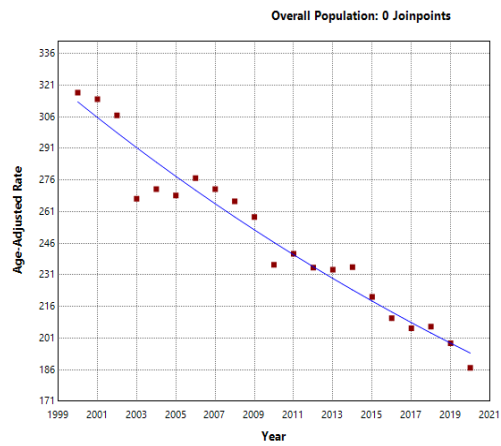
\* Indicates that the Annual Percent Change (APC) is significantly different from zero at the alpha = 0.05 level.  
# Observed Y Value 2020 was excluded from the model fitting.  
Final Selected Model: 0 Joinpoints.



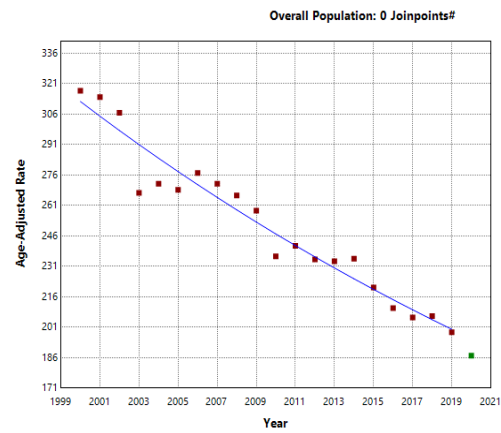
\* Indicates that the Annual Percent Change (APC) is significantly different from zero at the alpha = 0.05 level.  
Final Selected Model: 0 Joinpoints.



\* Indicates that the Annual Percent Change (APC) is significantly different from zero at the alpha = 0.05 level.  
# Observed Y Value 2020 was excluded from the model fitting.  
Final Selected Model: 0 Joinpoints.



\* Indicates that the Annual Percent Change (APC) is significantly different from zero at the alpha = 0.05 level.  
Final Selected Model: 0 Joinpoints.

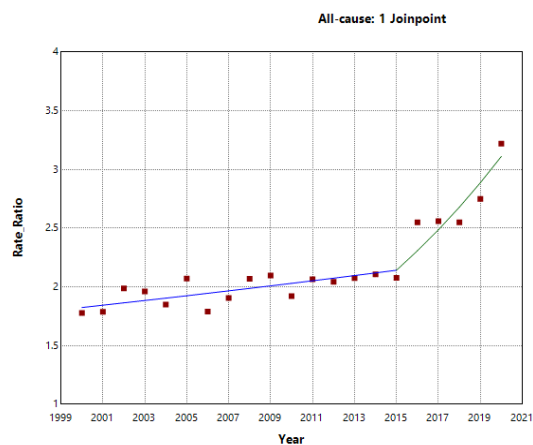


\* Indicates that the Annual Percent Change (APC) is significantly different from zero at the alpha = 0.05 level.  
# Observed Y Value 2020 was excluded from the model fitting.  
Final Selected Model: 0 Joinpoints.

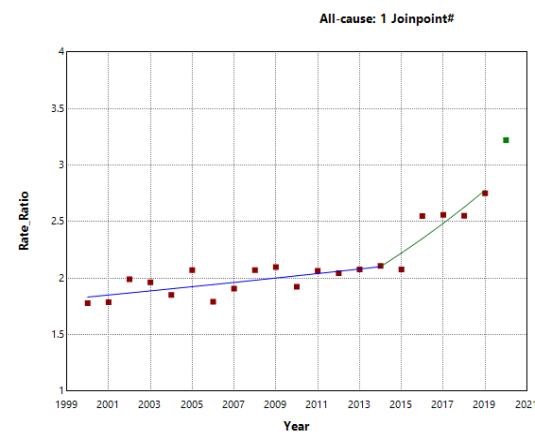


## eFigure 4, Rate ratios comparing Black individuals to White individuals before and after excluding deaths occurred in 2020

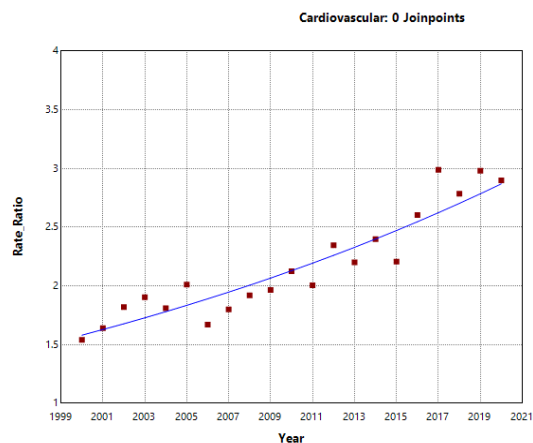
(A) All-cause, CVD, Cancer mortality before (left) and after (right) excluding 2020



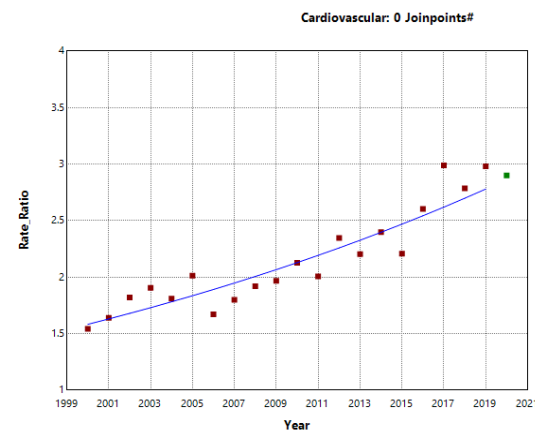
\* Indicates that the Annual Percent Change (APC) is significantly different from zero at the alpha = 0.05 level.  
Final Selected Model: 1 Joinpoint.



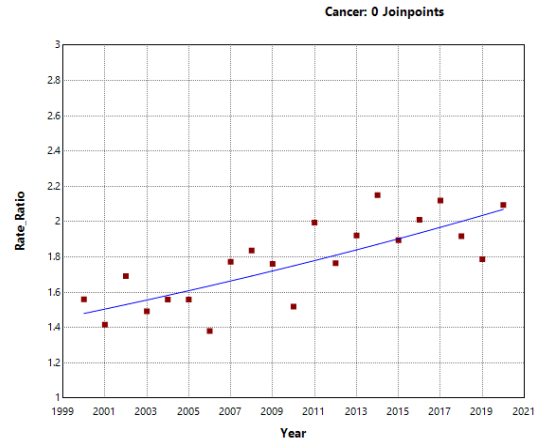
\* Indicates that the Annual Percent Change (APC) is significantly different from zero at the alpha = 0.05 level.  
# Observed Y Value 2020 was excluded from the model fitting.  
Final Selected Model: 1 Joinpoint.



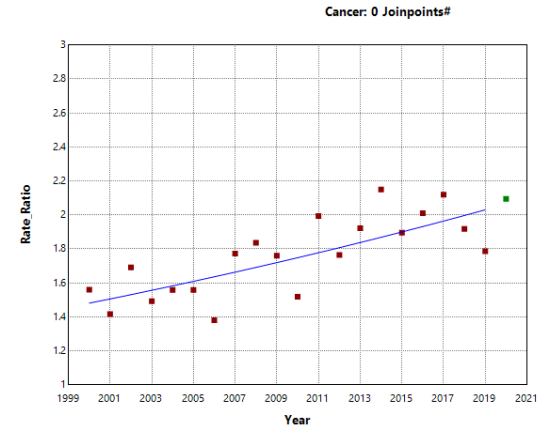
\* Indicates that the Annual Percent Change (APC) is significantly different from zero at the alpha = 0.05 level.  
Final Selected Model: 0 Joinpoints.



\* Indicates that the Annual Percent Change (APC) is significantly different from zero at the alpha = 0.05 level.  
# Observed Y Value 2020 was excluded from the model fitting.  
Final Selected Model: 0 Joinpoints.



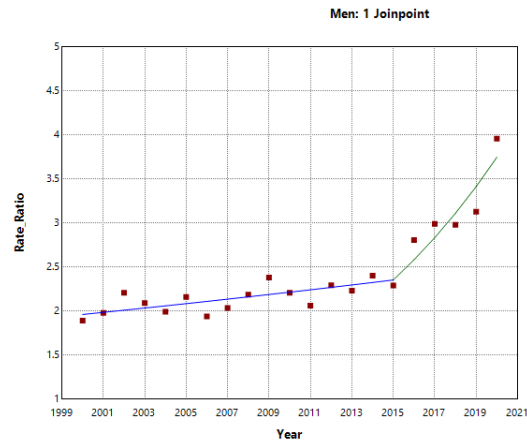
\* Indicates that the Annual Percent Change (APC) is significantly different from zero at the alpha = 0.05 level.  
Final Selected Model: 0 Joinpoints.



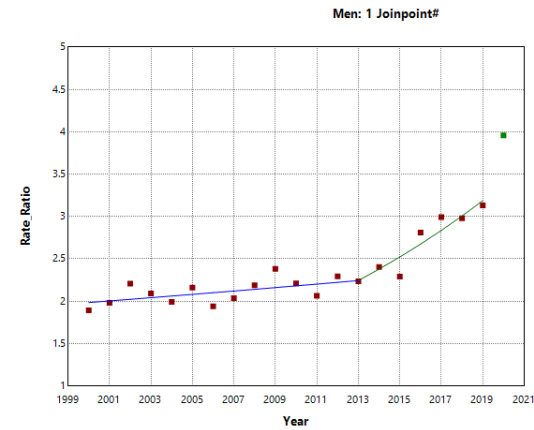
\* Indicates that the Annual Percent Change (APC) is significantly different from zero at the alpha = 0.05 level.  
# Observed Y Value 2020 was excluded from the model fitting.  
Final Selected Model: 0 Joinpoints.

**eFigure 5, Rate ratios comparing Black individuals to White individuals by sex before and after excluding deaths occurred in 2020**

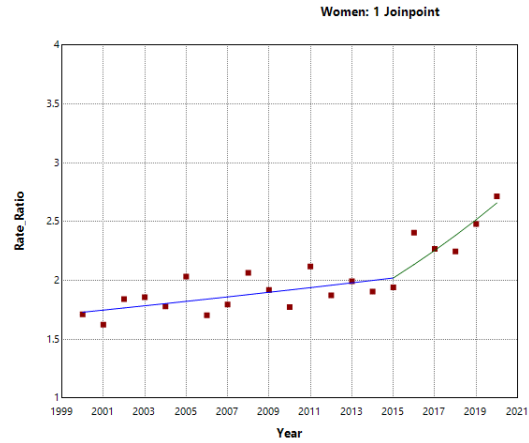
**(B) Rate Ratio for All-cause mortality by gender before (left) and after (right) excluding 2020**



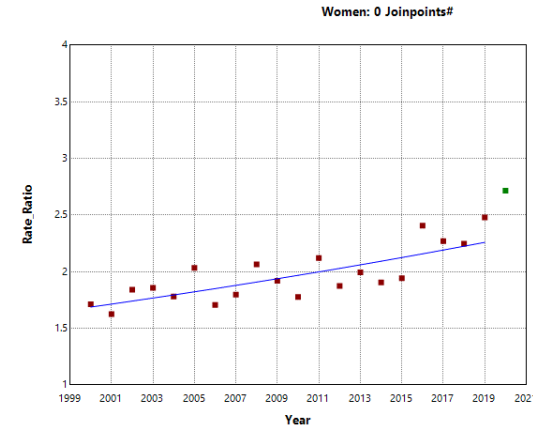
\* Indicates that the Annual Percent Change (APC) is significantly different from zero at the alpha = 0.05 level.  
Final Selected Model: 1 Joinpoint.



\* Indicates that the Annual Percent Change (APC) is significantly different from zero at the alpha = 0.05 level.  
# Observed Y Value 2020 was excluded from the model fitting.  
Final Selected Model: 1 Joinpoint.

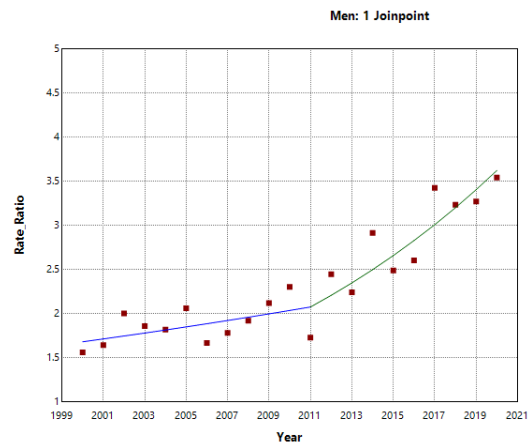


\* Indicates that the Annual Percent Change (APC) is significantly different from zero at the alpha = 0.05 level.  
Final Selected Model: 1 Joinpoint.

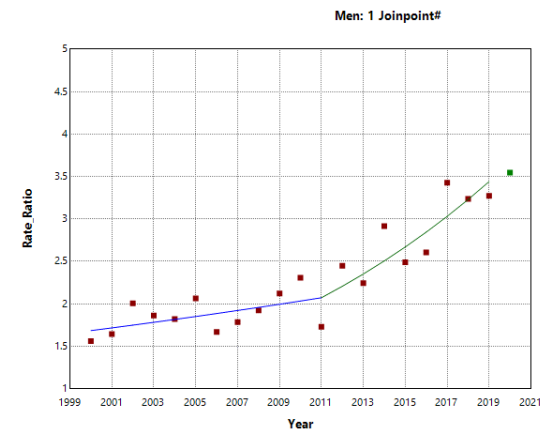


\* Indicates that the Annual Percent Change (APC) is significantly different from zero at the alpha = 0.05 level.  
# Observed Y Value 2020 was excluded from the model fitting.  
Final Selected Model: 0 Joinpoints.

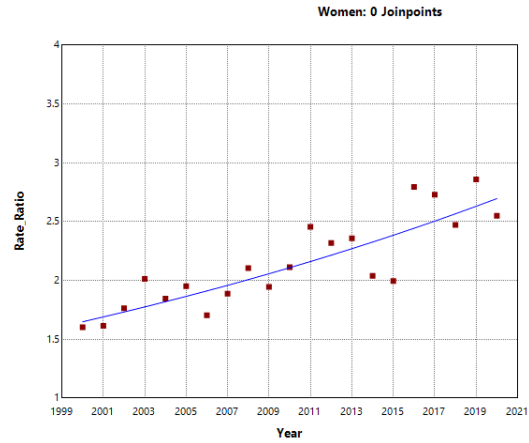
### (C) Rate Ratio for CVD mortality by gender before (left) and after (right) excluding 2020



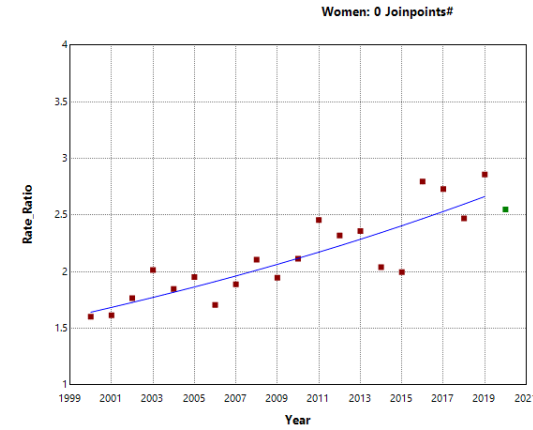
\* Indicates that the Annual Percent Change (APC) is significantly different from zero at the alpha = 0.05 level.  
Final Selected Model: 1 Joinpoint.



\* Indicates that the Annual Percent Change (APC) is significantly different from zero at the alpha = 0.05 level.  
# Observed Y Value 2020 was excluded from the model fitting.  
Final Selected Model: 1 Joinpoint.

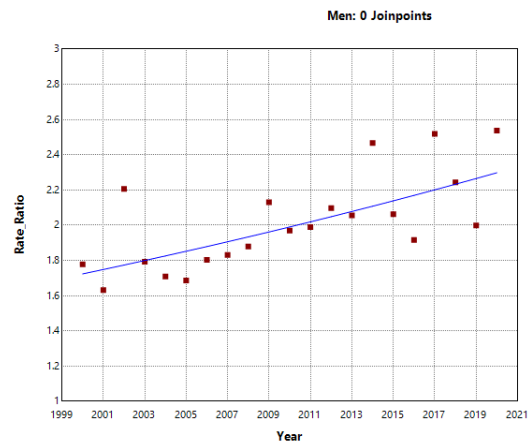


\* Indicates that the Annual Percent Change (APC) is significantly different from zero at the alpha = 0.05 level.  
Final Selected Model: 0 Joinpoints.

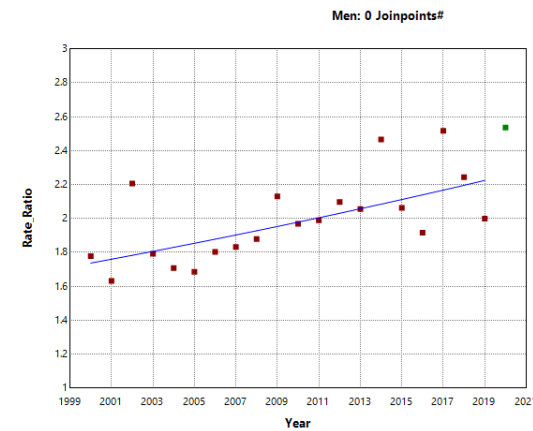


\* Indicates that the Annual Percent Change (APC) is significantly different from zero at the alpha = 0.05 level.  
# Observed Y Value 2020 was excluded from the model fitting.  
Final Selected Model: 0 Joinpoints.

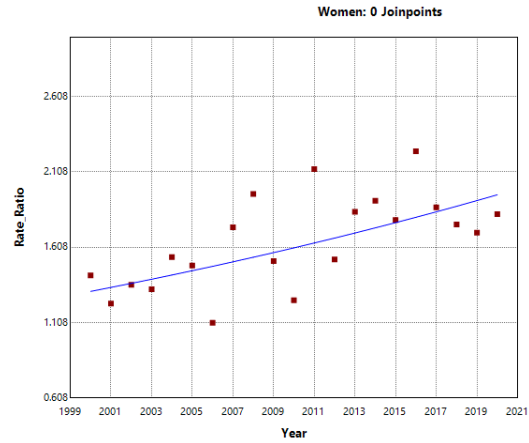
### (C) Rate Ratio for Cancer mortality by gender before (left) and after (right) excluding 2020



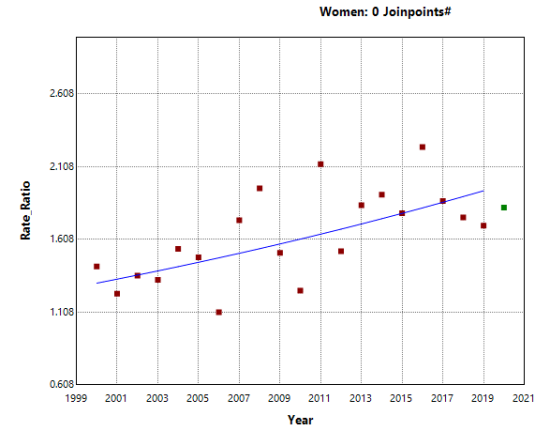
\* Indicates that the Annual Percent Change (APC) is significantly different from zero at the alpha = 0.05 level.  
Final Selected Model: 0 Joinpoints.



\* Indicates that the Annual Percent Change (APC) is significantly different from zero at the alpha = 0.05 level.  
# Observed Y Value 2020 was excluded from the model fitting.  
Final Selected Model: 0 Joinpoints.



\* Indicates that the Annual Percent Change (APC) is significantly different from zero at the alpha = 0.05 level.  
Final Selected Model: 0 Joinpoints.



\* Indicates that the Annual Percent Change (APC) is significantly different from zero at the alpha = 0.05 level.  
# Observed Y Value 2020 was excluded from the model fitting.  
Final Selected Model: 0 Joinpoints.

**eFigure 6, Joinpoint analysis without (top) and with (bottom) considering autocorrelated errors for age-adjusted mortality rate in Black, White, and overall population after excluding deaths occurred in 2020.**

