

The role of hypoxic-inducible factor (HIF1 α) and aldolaseC protein in endometrial carcinogenesis: a retrospective study of 279 patients

Paulette Mhaweche-Fauceglia,¹ Dan Wang,² Damanzoopinder Samrao,¹ Teodulo Menesses,¹ Heidi Godoy,³ Faith Ough,¹ Shashikant Lele,³ Song Liu,² Tanja Pejovic^{4,5}

To cite: Mhaweche-Fauceglia P, Wang D, Samrao D, *et al*. The role of hypoxic-inducible factor (HIF1 α) and aldolaseC protein in endometrial carcinogenesis: a retrospective study of 279 patients. *BMJ Open* 2012;**2**:e001450. doi:10.1136/bmjopen-2012-001450

► Prepublication history for this paper are available online. To view these files please visit the journal online (<http://bmjopen.bmj.com>).

Received 9 May 2012
Accepted 20 July 2012

This final article is available for use under the terms of the Creative Commons Attribution Non-Commercial 2.0 Licence; see <http://bmjopen.bmj.com>

For numbered affiliations see end of article

Correspondence to

Dr Paulette Mhaweche-Fauceglia;
pfauceglia@hotmail.com

ABSTRACT

Objectives: Hypoxia-inducible factor (HIF1 α) plays an integral role in response to hypoxia, controlling dozens of target genes including aldolaseC (ALDC), an important enzyme in the glycolytic pathway. It also induces angiogenesis, allowing survival and proliferation of cancer cells. The aims of our study were to evaluate the expressions of HIF1 α and ALDC in patients with endometrial cancer (EC) and define their association with disease outcome and to determine the existence of an association between HIF1 α and ALDC proteins.

Design: This is a population-based retrospective cohort study using the gynaecological-oncology database. The authors identified all women with EC with adequate follow-up. Immunohistochemistry using antibodies to ALDC and HIF1 α was performed on paraffin-embedded tissue from 279 patients. To test the association between ALDC /HIF1 α protein using immunohistochemistry (IHC) (positive and negative) and the clinical parameters, Fisher's exact test was performed for categorical parameters and the logistic regression model was used for continuous ones. Pearson correlation was used to check the association of IHC between ALDC and HIF1 α .

Setting: Academic referral centre.

Participants: Women with EC from 2000 to 2010 obtained from the gynaecological-oncology database.

Outcome measures: The disease outcome is defined by alive with no evidence of disease versus all other outcomes.

Results: ALDC and HIF1 α were overexpressed in the vast majority of EC cases (78% and 76%, respectively). There was a strong positive association between HIF1 α and ALDC ($p=0.0017$). There was a significant association between ALDC and depth of myometrial invasion ($p=0.0438$), and between HIF1 α and tumour grade ($p=0.0231$) and tumour subtype ($p=0.018$). However, there was no association between neither ALDC nor HIF1 α and disease status.

Conclusions: ALDC and HIF1 α play an important role in endometrial carcinogenesis. Their expression by the majority of EC makes inhibition of HIF1 α a very attractive therapeutic option for treating patients with

ARTICLE SUMMARY

Article focus

- Hypoxia-inducible factor (HIF1 α) and aldolaseC (ALDC) expressions in patients with endometrial cancer (EC).
- HIF1 α and ALDC interaction in vivo in EC.
- HIF1 α and ALDC value in predicting disease outcome in patients with EC.

Key messages

- HIF1 α and ALDC are frequently expressed in EC.
- There is a strong association between HIF1 α and ALDC in EC and therefore they could play an important role in its pathogenesis.
- HIF1 α and ALDC are associated with poor prognostic factors.
- HIF1 α and ALDC are not independent predictive biomarkers of poor outcome.

Strengths and limitations of this study

- It is a large study of 279 patients.
- It is one of the few in the literature.
- It is the first to evaluate the association of HIF1 α and ALDC in vivo in EC.
- The study did not have a large numbers of type II cancers (serous and clear cell carcinomas).
- The study did not contain too many cases of late-stage tumours (stage III and IV).

EC and we suggest that it will be prospectively validated in future studies.

INTRODUCTION

Endometrial cancer (EC) is the most common gynaecological malignancy in developed countries. There are approximately 42 000 cases diagnosed annually in the USA, resulting in almost 8000 deaths.¹ EC has been classified into two types based on morphology, pathogenesis, behaviour and

treatment: type I (endometrioid and mucinous carcinomas) and type II (serous and clear cell carcinomas). Type I is usually low grade and low stage at initial presentation. Type II is usually high grade and in an advanced stage at initial presentation. The most reliable prognostic factors in predicting disease outcome in EC are tumour grade, tumour stage, tumour subtype, depth of myometrial invasion and lymph node involvement.²⁻⁴

One of the most prominent metabolic alterations in cancer cells is an increase in aerobic glycolysis, known as the Warburg effect after its discovery by Otto Warburg in 1920.⁵ This increase in glycolysis, due to a shift in glucose metabolism from oxidative phosphorylation into the aerobic glycolysis pathway, provides the tumour with metabolic and survival advantages.⁶⁻⁸ Aldolase, a critical enzyme in the glycolytic pathway, catalyses the reversible conversion of fructose-1,6-biphosphate to glyceraldehyde-3-phosphate and dihydroxyacetone phosphate. Aldolase has three distinct isoenzymes, A, B and C, which are similar in sequence with 78% identity between A and C and 68% identity between B and C.^{9, 10} Originally identified in brain tissue, aldolaseC (ALDC) has been seen to be overexpressed in carcinomas of the lung, kidney, cervix and endometrium.¹¹⁻¹³

The hypoxic-inducible factor (HIF1) gene codes for two subunits, α and β , and is usually activated by hypoxic conditions, a microenvironment that commonly accompanies cancerous tumours. When activated, HIF1 can interact with enzymes and other transcription factors in order to control vascularisation and tissue growth. HIF1 α was recently identified as a potent regulator of ALDC, another mechanism by which it may promote carcinogenesis.¹⁴ Thus, attempts to target the HIF1 α pathway in hopes of suppressing cancer cell proliferation and progression are underway. In the gynaecological tract, HIF1 α expression increases as the endometrium undergoes changes from normal to premalignant to endometrioid adenocarcinoma (EAC). This is paralleled by increased angiogenesis in the endometrium, suggesting that HIF1 α might be a key regulator in endometrial carcinogenesis.¹⁵

Although the interaction between HIF1 α and ALDC has been seen in vivo, their interaction in human samples and in endometrial carcinoma has not yet been described. Therefore, the aims of this study are (1) to evaluate the expression of HIF1 α and ALDC proteins in patients with EC and to find an association between these two proteins in this patient sample and (2) to determine whether either of these two proteins independently or any combination of their expressions might have an impact on disease outcome.

MATERIALS AND METHODS

Patient population

After obtaining IRB approval, the pathology archives were searched for endometrial carcinoma cases from January 2000 to December 2010. Data were extracted from clinical charts including patients' age at the time

of diagnosis, surgical stage, postoperative therapy, site of recurrence, and cause and time of death. All patients underwent surgical staging with a total hysterectomy and bilateral salpingo-oophorectomy (TAH+BSO), and pelvic washings. Pelvic and para-aortic lymphadenectomy was performed for patients with advanced stage disease and high-grade tumours. Patients were treated according to the National Comprehensive Cancer Network (NCCN) guidelines (www.cancer.gov).

Histological evaluation

Tumour grade was assessed using the International Federation of Gynecology and Obstetrics (FIGO) system and by nuclear grading. FIGO grading was determined as follows; tumours with <5% solid areas were grade 1 (G1), tumours with 5-50% solid areas were grade 2 (G2) and tumours with >50% solid areas were grade 3 (G3). Nuclear grade of tumours was determined by the variation in nuclear size and shape, chromatin distribution and size of the nucleoli. Grade 1 nuclei are oval, mildly enlarged and have evenly dispersed chromatin. Grade 3 nuclei are markedly enlarged and pleomorphic and have prominent eosinophilic nucleoli. Grade 2 nuclei have features between G1 and G3. Tumour stage was assigned based on 1988 FIGO surgical staging guidelines.¹⁶ All slides were examined by an expert gynaecological pathologist for confirmation of the histologic type, tumour size, tumour grade, depth of myometrial invasion (MI) and presence of lymphovascular invasion (LVI).

Immunohistochemistry

Four micron thick sections from 279 cases were deparaffinised with xylene and washed with ethanol. In addition, five sections from normal endometrium were also included in the study. Sections were cooled for 20 min and incubated for 10 min with 3% H₂O₂ to quench endogenous peroxidase activity. Blocking was performed using a serum-free protein block, Dakocytomation (Carpenteria, California, USA), for 30 min. The sections were pretreated with an EDTA buffer saline solution, steamed for 20 min and then sections were incubated with HIF1 α (monoclonal; 1:1000 dilution; Novus Biologicals, Littleton, Colorado, USA) and ALDC (monoclonal; 1:250 dilution; Sigma-Aldrich, St Louis, Missouri, USA) for 1 h at room temperature. The diaminobenzidine complex was used as a chromogen. Negative control slides omitting the primary antibody were included in all assays. Breast cancer was used as positive controls for HIF1 α and ALDC. The extent of immunochemical reactivity was graded based on intensity as follows: 0 (negative), 1+ (weak), 2+ (moderate), 3+ (strong). For the sake of statistical analysis, negative and weak stains were grouped as group I (negative) and moderate and strong as group II (positive).

Statistical analyses

The clinical parameters used for modelling were age, tumour size, histological subtype, tumour stage, myometrial depth of invasion, LVI, FIGO grade, nuclear grade,

Table 1 Clinical and pathological features of patients (data in parentheses are percentages)

Characteristics	
No. of evaluable patients	279
Age (years)	
Median	65
Range	29–97
Follow time (months)	
Median	46.32
Range	(0–137.16)
Stage	
I	181 (64.87)
II	35 (12.54)
III	43 (15.41)
IV	20 (7.17)
Subtype	
Endometrioid	202 (72.4)
CCC+serous	77 (27.6)
Grade (FIGO)	
1	119 (42.65)
2	53 (19)
3	107 (38.35)
Grade (nuclear)	
1	93 (33.33)
2	75 (26.88)
3	111 (39.78)
Tumour size (cm)	
≤ 2	62 (22)
> 2	217 (78)
Depth of invasion	
Median	28
Range	0–100
LVI	
No	202 (72.4)
Yes	77 (27.6)
Lymph node status	
Positive	50 (17.92)
Negative	135 (48.39)
Unknown	94 (33.69)
Recurrence	
No	215 (77.06)
Yes	47 (16.85)
Persistent	12 (4.3)
Progression	4 (1.43)
Unknown	1 (0.36)
Status	
ANED	188 (67.38)
AWED	22 (7.89)
DOD	38 (13.62)
DNED	22 (7.89)
Dead unknown cause	1 (0.36)
DWED	7 (2.51)
Lost for FU	1 (0.36)

ANED, alive with no evidence of disease; AWED, alive with evidence of disease; CCC, clear cell carcinoma; DOD, dead with evidence of disease; DNED, dead with no evidence of disease; DWED, dead with evidence of disease; FIGO, International Federation of Gynecology and Obstetrics; LVI, lymphovascular invasion.

lymph node status, recurrence, recurrence time, survival time and status. To test the association between ALDC/HIF1 α IHC (positive and negative) and the clinical parameters, Fisher's exact test was performed for categorical parameters and the logistic regression model was used for continuous ones. Pearson correlation was used to check the association of IHC between ALDC and HIF1 α . All statistical analyses were performed using the statistical software package R (<http://www.r-project.org/>).

RESULTS

Clinical and pathological features

Two hundred and seventy-nine patients diagnosed with endometrial carcinoma were included in the study. The age ranged from 29 to 97 years (median age 65 years). The follow-up period ranged from 0 (as one patient was lost for follow-up) to 137.16 months (median

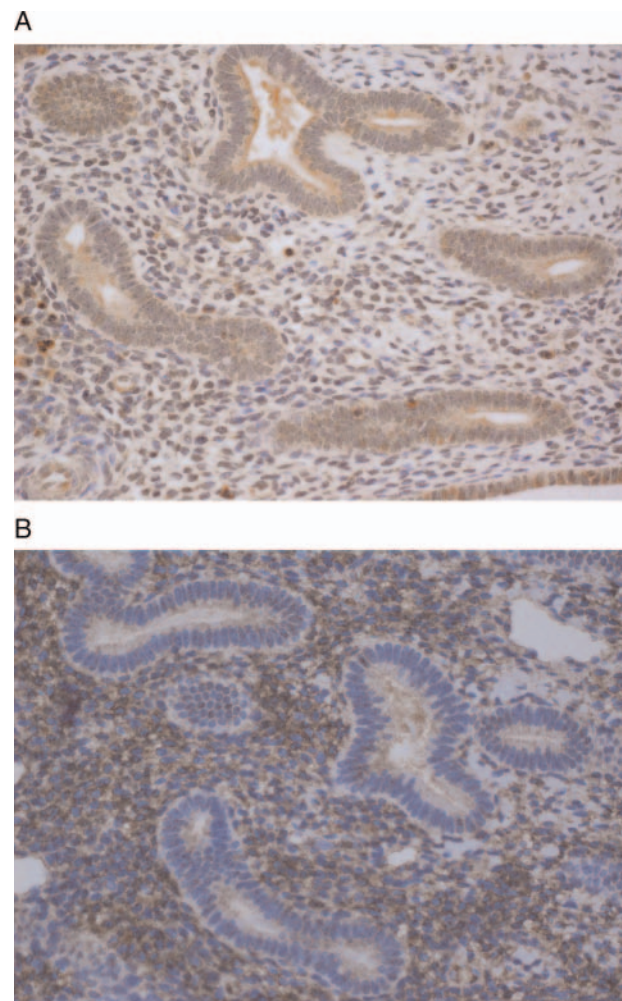


Figure 1 (A) AldolaseC is negative in normal endometrium ($\times 40$) and (B) Hypoxia-inducible factor-1 α is negative/weakly positive in normal endometrium ($\times 40$).

46.32 months). The clinical and histological features are summarised in table 1.

ALDC and HIF1 α immunoexpressions

The staining patterns were nuclear for HIF1 α and cytoplasmic for ALDC. The five cases of normal endometrium all came from patients who underwent a hysterectomy for benign reasons, such as fibroids, and were weakly positive for ALDC and negative for HIF1 α (figure 1A,B). There was a strong positive association between ALDC and HIF1 α proteins (p=0.0017) in EC. The results of the association of ALDC and the clinical-pathological variables are shown in table 2. Fifty-nine of 279 (22%) cases were negative for ALDC protein and 220/279

Table 2 Association of aldolaseC IHC with clinicopathologic variables

Variables	Negative (n=59)	Positive (n=220)	p Value
Age (median)	69	65	0.4*
Myometrial invasion (median)	21	31.5	0.0438
Stage			
I	41 (69.49)	140 (63.64)	0.7656
II	8 (13.56)	27 (12.27)	
III	7 (11.86)	36 (16.36)	
IV	3 (5.08)	17 (7.73)	
Tumour size (cm)			
≤ 2	15 (25.42)	47 (21.36)	0.4866**
> 2	44 (74.58)	173 (78.64)	
LVI			
No	46 (77.97)	156 (70.91)	0.3273
Yes	13 (22.03)	64 (29.09)	
Grade_FIGO			
1	24 (40.68)	95 (43.18)	0.9266
2	11 (18.64)	42 (19.09)	
3	24 (40.68)	83 (37.73)	
Grade_nuclear			
1	15 (25.42)	78 (35.45)	0.3096
2	19 (32.2)	56 (25.45)	
3	25 (42.37)	86 (39.09)	
Lymph node status			
Positive	6 (16.22)	44 (29.73)	0.1461
Negative	31 (83.78)	104 (70.27)	
Subtype			
CCC+Serous	17 (28.81)	60 (27.27)	0.87
Endometrioid	42 (71.19)	160 (72.73)	
Recurrence			
No	45 (81.82)	170 (82.13)	1
Yes	10 (18.18)	37 (17.87)	
Status			
ANED	41 (69.49)	147 (66.82)	0.7561
Others	18 (30.51)	73 (33.18)	

*p Value calculated by logistic linear regression.
 **p Value calculated by Fisher's exact test.
 ANED, alive with no evidence of disease; FIGO, International Federation of Gynecology and Obstetrics; IHC, immunohistochemical; LVI, lymphovascular invasion.

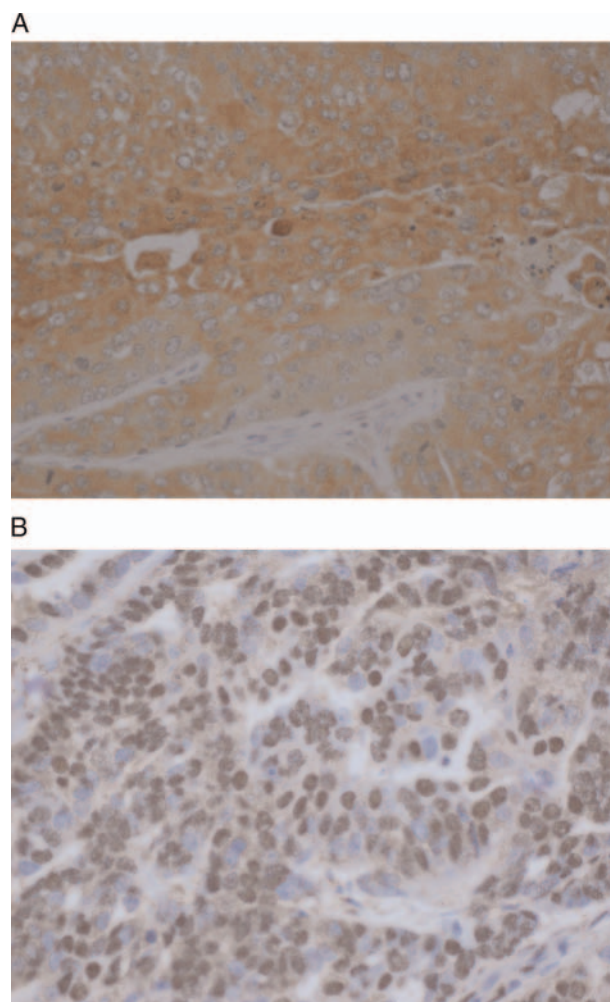


Figure 2 (A) AdolaseC in endometrioid adnoacrinoma exhibiting a strong cytoplasmic pattern. (B) HIF1a in endometrid adenocarcinoma with strong nuclear pattern.

(78%) were positive (figure 2A,B). ALDC was only associated with depth of myometrial invasion (p=0.0438), lending to the conclusion that tumours invading deeper into the myometrium are more likely to overexpress ALDC.

The results of the association between HIF1 α and the clinical-pathological variables are summarised in table 3. Sixty-six of 279 (24%) cases did not express HIF1 α and 213/279 (76%) did (figure 3B). There was an association between HIF1 α and histological subtype and tumour grade (p=0.018 and 0.0368, respectively). This led us to the conclusion that EACs are more likely to express HIF1 α than clear cell and serous adenocarcinomas. In addition, high-grade tumours, G2 and G3, are more likely to express HIF1 α than low-grade tumours (G1).

Finally, neither ALDC nor HIF1 α proteins individually, or any combination of their expressions—(ALDC +/HIF1 α -), (ALDC+/HIF1 α +), (ALDC-/HIF1 α +), (ALDC-/HIF1 α -)—had an impact on disease outcome such as recurrence, progression or death of disease.

Table 3 Association of IHF1 α IHC with clinicopathological variables

Variables	Negative (n=66)	Positive (n=213)	p Value
Age (median)	65	65	0.3571*
Myometrial invasion (median)	40	25	0.0646**
Stage			
I	39 (59.09)	142 (66.67)	0.6376
II	10 (15.15)	25 (11.74)	
III	11 (16.67)	32 (15.02)	
IV	6 (9.09)	14 (6.57)	
Tumour size (cm)			
≤ 2	15 (22.73)	47 (22.07)	1
> 2	51 (77.27)	166 (77.93)	
LVI			
No	46 (69.7)	156 (73.24)	0.6367
Yes	20 (30.3)	57 (26.76)	
Grade_FIGO			
1	22 (33.33)	97 (45.54)	0.0231
2	9 (13.64)	44 (20.66)	
3	35 (53.03)	72 (33.8)	
Grade_nuclear			
1	19 (28.79)	74 (34.74)	0.0368
2	12 (18.18)	63 (29.58)	
3	35 (53.03)	76 (35.68)	
Lymph node status			
Positive	14 (26.92)	36 (27.07)	1
Negative	38 (73.08)	97 (72.93)	
Subtype			
CCC+Serous	26 (39.39)	51 (23.94)	0.018
Endometrioid	40 (60.61)	162 (76.06)	
Recurrence			
No	48 (81.36)	167 (82.27)	0.849
Yes	11 (18.64)	36 (17.73)	
Status			
ANED	40 (60.61)	148 (69.48)	0.1805
Others	26 (39.39)	65 (30.52)	

*p Value calculated by logistic linear regression.

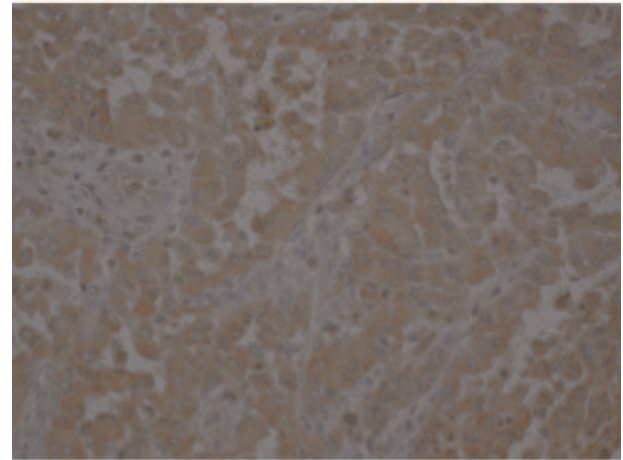
**p Value calculated by Fisher's exact test.

ANED, alive with no evidence of disease; FIGO, International Federation of Gynecology and Obstetrics; HIF1 α , hypoxia-inducible factor-1 α ; IHC, immunohistochemical; LVI, lymphovascular invasion.

DISCUSSION

HIF1 α is a transcription factor and it is a major regulator of oxygen homeostasis within cells.¹⁴ It plays an important role in tumorigenesis through its enhancement of angiogenesis via regulation of vascular endothelial growth factor (VEGF) transcription, which promotes endothelial cell migration towards a hypoxic area. In addition, in hypoxic conditions, HIF1 α regulates metabolism by shifting the production of ATP via oxidative phosphorylation to aerobic metabolism by stimulation of a variety of glycolytic enzymes, including ALDC.^{17 18} Even though this relation between HIF1 α and ALDC is well established in vitro and animal models, their association in human cancer tissues, namely EC, is still widely

A



B

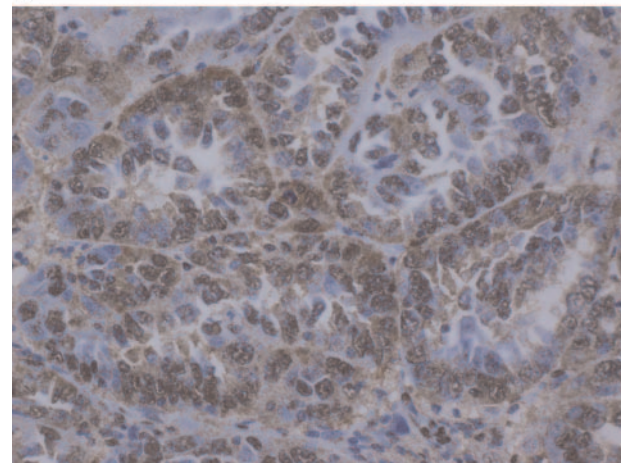


Figure 3 (A) AldolaseC in serous adenocarcinoma showing a strong cytoplasmic staining. (B) HIF1a in serous adenocarcinoma with strong nuclear pattern.

unexplored. Our main goal was to evaluate the expression of ALDC and HIF1 α in a large series of cases of EC. We found that ALDC and HIF1 α were both expressed in the majority of EC cases and they were negative in normal endometrium. In addition, a strong positive association between HIF1 α and ALDC was seen in these cases.

Previously, using cDNA microarray, we showed that one of the genes that is upregulated in uterine serous carcinoma in comparison with EAC is *aldolaseC*.^{19 20} Furthermore, qRT-PCR showed that the ALDC mRNA level was overexpressed in endometrial carcinomas in comparison with normal endometrium, but there was no association between ALDC-mRNA level and the EC subtypes.²¹ Similarly, in this study, we found that ALDC was not associated with tumour subtype. However, it was associated with one of the most reliable pathological prognostic factors of poor outcome, depth of myometrial invasion. In addition, we found that overexpression of HIF1 α is associated with high tumour grade, another major prognostic factor of poor outcome in patients

with EC. This further confirms that ALDC and HIF1 α overexpression may be related to tumour aggressiveness.^{15–22} All the above data lead us to suggest that these two proteins may be key regulators in endometrial carcinogenesis.

Recently, with clearer understanding of the function of HIF1 α and its pathway, efforts directed at manipulation of this complex in order to decrease cellular HIF1 α levels in tumour cells have been undertaken. Thus, modulation of HIF1 α and its pathway promises to have a significant impact on cancer and it seems to be an attractive therapeutic option for patients with EC.

In summary, ALDC and HIF1 α seem to play a role in the tumourigenesis of EC and their expression may be an indication of tumour aggressiveness, and we suggest that prospectively it will be validated in future studies.

Author affiliations

¹Department of Pathology, University of Southern California, Los Angeles, California, USA

²Department of Biostatistics, Roswell Park Cancer Institute, Buffalo, New York, USA

³Department of Gynecologic Oncology, Roswell Park Cancer Institute, Buffalo, New York, USA

⁴Division of Gynecologic Oncology, Oregon Health & Science University, Portland, Oregon, USA

⁵Knight Cancer Institute, Portland, Oregon, USA

Contributors PMF designed and wrote the study; DW and SL performed the statistical analysis; DS, HG and TM reviewed the patients charts; DS and FO helped in reviewing the manuscript; SL and TP were involved in conducting and writing the study.

Funding None.

Competing interests None.

Ethics approval This study was approved by the IRB committee and was conducted with maintenance of respect to privacy of all patients throughout.

Provenance and peer review Not commissioned; externally peer reviewed.

Data sharing statement No additional data are available.

REFERENCES

1. Jemal A, Siegel R, Ward E, *et al.* Cancer statistics, 2009. *CA Cancer J Clin* 2009;59:225–49.

2. Part J. Prognostic parameters of endometrial carcinoma. *Hum Pathol* 2004;35:649–62.
3. Kitchener HC, Trimble EL. Endometrial cancer state of the science meeting. *Int J Gynecol Cancer* 2009;19:134–40.
4. Naumann RW. Uterine papillary serous carcinoma: state of the state. *Curr Oncol Rep* 2008;10:505–11.
5. Warburg O. On the origin of cancer cells. *Science* 1956;123:309–14.
6. Beckner ME, Stracke ML, Liotta LA, *et al.* Glycolysis as primary energy source in tumor chemotaxis. *J Natl Cancer Inst* 1990;82:1836–40.
7. Greiner EF, Guppy M, Brand K. Glucose is essential for proliferation and the glycolytic enzyme induction that provokes a transition to glycolytic energy production. *J Biol Chem* 1994;269:31484–490.
8. Saw RJ. Glucose metabolism and cancer. *Curr Opin Cell Biol* 2006;18:598–08.
9. Kurganov BI, Sugrobova NP, Mil'man LS. Supramolecular organization of glycolytic enzymes. *J Theor Biol* 1985;116:509–26.
10. Ronai Z. Glycolytic enzymes as DNA binding proteins. *Int J Biochem* 1993;25:1073–6.
11. Marshall MJ, Goldberg DM, Neal FE, *et al.* Enzymes of glucose metabolism in carcinoma of the cervix and endometrium of the human uterus. *Br J Cancer* 1978;37:990–01.
12. Takashi M, Haimoto H, Koshikawa T, *et al.* Expression of aldolaseC isozyme in renal cell carcinoma. *Am J Clin Pathol* 1990;93:631–36.
13. Ojika T, Imaizumi M, Abe T, *et al.* Immunohistochemical and immunohistochemical studies on three aldolase isozymes in human lung cancer. *Cancer* 1991;67:2153–58.
14. Zeillo JE, Jovin IS, Huang Y. Hypoxia-inducible factor (HIF)-1 regulatory pathway and its potential for therapeutic intervention in malignancy and ischemia. *Yale J Biol Med* 2007;80:51–60.
15. Horree N, van Diest PJ, van der Groep P, *et al.* Hypoxia and angiogenesis in endometrioid endometrial carcinogenesis. *Cell Oncol* 2007;29:219–27.
16. FIGO Announcements, stages-1988 Revision. *Gynecol Oncol* 1989;35:125.
17. Patel PS, Rawal GN, Balar DB. Combined use of serum enzyme levels as tumor markers in cervical carcinoma patients. *Tumour Biol* 1994;15:45–51.
18. Jean JC, Rich CB, Joyce-Brady M. Hypoxia results in an HIF-1-dependent induction of brain-specific aldolaseC in lung epithelial cells. *Am J Physiol Lung Cell Mol Physiol* 2006;291:L950–56.
19. Mhawech-Fauceglia P, Wang D, Kesterson J, *et al.* Gene expression profiles in stage I uterine serous carcinoma in comparison to grade 3 and grade 1 stage I endometrioid adenocarcinoma. *PLoS One* 2011;6:e18066.
20. Mhawech-Fauceglia P, Wang D, Kesterson J, *et al.* Microarray analysis reveals distinct gene expression profiles among different tumor histology, stage and disease outcomes in endometrial adenocarcinoma. *PLoS One* 2010;5:e15415.
21. Mhawech-Fauceglia P, Wang D, Kesterson J, *et al.* Aldolase mRNA expression in endometrial cancer and the role of clotrimazole in endometrial cancer cell viability and morphology. *Histopathology* 2011;59:1015–18.
22. Seeber LMS, Horree N, Voojis MA, *et al.* Necrosis related HIF-1 α expression predicts prognosis in patients with endometrioid endometrial carcinoma. *BMC Cancer* 2010;10:307–3118.