

RESEARCH ARTICLE

Open Access



Macroscopic optical physiological parameters correlate with microscopic proliferation and vessel area breast cancer signatures

So Hyun Chung^{1*}, Michael D. Feldman², Daniel Martinez³, Helen Kim¹, Mary E. Putt⁴, David R. Busch^{1,5}, Julia Tchou⁶, Brian J. Czerniecki⁶, Mitchell D. Schnall⁷, Mark A. Rosen⁷, Angela DeMichele⁸, Arjun G. Yodh¹ and Regine Choe⁹

Abstract

Introduction: Non-invasive diffuse optical tomography (DOT) and diffuse correlation spectroscopy (DCS) can detect and characterize breast cancer and predict tumor responses to neoadjuvant chemotherapy, even in patients with radiographically dense breasts. However, the relationship between measured optical parameters and pathological biomarker information needs to be further studied to connect information from optics to traditional clinical cancer biology. Thus we investigate how optically measured physiological parameters in malignant tumors such as oxy-, deoxy-hemoglobin concentration, tissue blood oxygenation, and metabolic rate of oxygen correlate with microscopic histopathological biomarkers from the same malignant tumors, e.g., Ki67 proliferation markers, CD34 stained vasculature markers and nuclear morphology.

Methods: In this pilot study, we investigate correlations of macroscopic physiological parameters of malignant tumors measured by diffuse optical technologies with microscopic histopathological biomarkers of the same tumors, i.e., the Ki67 proliferation marker, the CD34 stained vascular properties marker, and nuclear morphology.

Results: The tumor-to-normal relative ratio of Ki67-positive nuclei is positively correlated with DOT-measured relative tissue blood oxygen saturation ($R = 0.89$, p -value: 0.001), and lower tumor-to-normal deoxy-hemoglobin concentration is associated with higher expression level of Ki67 nuclei (p -value: 0.01). In a subset of the Ki67-negative group (defined by the 15 % threshold), an inverse correlation between Ki67 expression level and mammary metabolic rate of oxygen was observed ($R = -0.95$, p -value: 0.014). Further, CD34 stained mean-vessel-area in tumor is positively correlated with tumor-to-normal total-hemoglobin and oxy-hemoglobin concentration. Finally, we find that cell nuclei tend to have more elongated shapes in less oxygenated DOT-measured environments.

Conclusions: Collectively, the pilot data are consistent with the notion that increased blood is supplied to breast cancers, and it also suggests that less conversion of oxy- to deoxy-hemoglobin occurs in more proliferative cancers. Overall, the observations corroborate expectations that macroscopic measurements of breast cancer physiology using DOT and DCS can reveal microscopic pathological properties of breast cancer and hold potential to complement pathological biomarker information.

* Correspondence: sochung@sas.upenn.edu

¹Department of Physics and Astronomy, University of Pennsylvania, 209 S. 33rd St., Philadelphia, PA 19104, USA

Full list of author information is available at the end of the article

Introduction

Diffuse optical imaging and spectroscopy measure deep tissue physiology *in vivo* using low-power non-ionizing light, and in recent years, cancer research with diffuse optics has become more quantitative [1–3]. Several features of diffuse optics make the technology appealing for use in patients with breast cancer, including technical simplicity, portability, soft compression of the breast, non-invasiveness and the cost. Furthermore, the technology has been demonstrated to detect/characterize breast tissue properties regardless of patient age and breast radiographic density [4–8], and it can be used to monitor patient responses to therapy continuously at the bedside [9–14].

The primary endogenous physiological information derived from diffuse optical measurements is oxyhemoglobin, deoxyhemoglobin and total hemoglobin concentration, tissue blood oxygenation [1, 3, 5–8, 14, 15], blood flow [13, 16], and water and lipid concentration [1, 3, 5–8, 14, 15]. More recently, tissue temperature, the binding state of water [7, 10, 17–19] and collagen [20, 21] are proving to be interesting biomarkers. Several groups have reported contrast between breast cancer, benign lesions, and normal tissues based on these physiological parameters [6, 22–24], and tumor responses to neoadjuvant chemotherapy (NAC) have been monitored successfully [9, 11, 13, 14, 25–27]. Some of these responses predict complete versus non-complete pathologically determined response among patients during the early stages of NAC [9, 28, 29] and even before therapy [30].

In this paper we examine how macroscopic diffuse optical parameters are related to microscopic pathology information that clinicians typically employ for treatment strategy decisions. In clinical practice, tumor samples are characterized based on microscopic analyses of immunohistologically stained biopsy specimens. For example, Ki67 expression level in cell nuclei is often assessed to quantify proliferation of cancer cells [31, 32], and CD34 staining is used for quantifying endothelial cells of micro-vessels in order to assess angiogenesis in tumors [33]. A few studies have compared microscopic markers to the parameters derived from diffuse optical images [30, 34–39]. Total hemoglobin concentration in breast cancer, for example, has been positively correlated with vascular properties such as micro-vessel density [37–39]. Although correlations between Ki67 proliferation marker expression level and diffuse optically measured physiological parameters have not been reported, several positron emission tomography (PET) studies have found correlation between Ki67 cancer proliferation level and fluorodeoxyglucose (FDG) metabolism [40–42], but a different study reported no correlation between Ki67 and ^{18}F -FDG uptake, and a marginal correlation between Ki67 expression level and tumor-to-background ratio of the uptake of the hypoxia-

avid compound ^{18}F -labeled fluoromisonidazole (^{18}F -FMISO) [43]. The authors of the latter paper concluded that their observations might be due to alteration of glucose metabolism in cancer that prefers aerobic glycolysis, a phenomenon known as the Warburg effect [44]. In the work of Cochet et al. [41], no significant correlation was found between standardized uptake of ^{18}F -FDG and endothelial markers (CD34 and CD105). Note also, tumor blood flow indices defined by these authors correlated positively with the expression of CD34 and CD105 and with the expression of Ki67 [41].

Our pilot study provides a more extensive exploration of the potential connections between tissue parameters obtained from diffuse optical tomography (DOT) and diffuse correlation spectroscopy (DCS), and standard histopathological biomarkers derived from the same patient tissues. In previous research we demonstrated that the tumor-to-normal ratio of a variety of parameters in three-dimensional (3-D) DOT images can differentiate benign from malignant breast lesions [6]. Here we focus on malignant tumor properties. Specifically, we investigated how DOT-based physiological parameters in malignant tumors, such as oxyhemoglobin, deoxyhemoglobin concentrations, tissue blood oxygenation, and tumor-to-normal ratio of the mammary metabolic rate of oxygen ($r\text{MMRO}_2$) (derived from hemoglobin concentration and DCS blood flow data) correlate with microscopic histopathological biomarkers from the same malignant tumors, i.e., with the Ki67 proliferation marker, the CD34 stained vasculature marker, nuclear morphology and with hormonal receptor status of breast cancer.

Methods

Subjects

The University of Pennsylvania Institutional Review Board approved our measurement protocol. Written informed consent was obtained from each subject for the diffuse optical measurements and for publishing the data. For this retrospective study, written informed consent was not required for retrieval of specimens routinely stored in the tissue bank. From 37 subjects with cancer analyzed with DOT in our previous publications [6, 16], corresponding pathology slides for 21 subjects were available for additional staining of Ki67 and CD34. Specimens from the remaining subjects were not stored in the tissue bank from which we retrieved the tissues. Although some samples were not available for additional staining, information on 11 of these subjects was acquired from standard-of-care pathology reports for the correlation study with tumor grade and hormonal/genetic subtypes. Thus, a total 32 subjects with infiltrating ductal carcinoma were studied in this paper.

In the 21 subjects used for Ki67, CD34 and nuclear morphology analysis, DOT measurements were performed

at three different times: (1) prior to any biopsy in 9 subjects (DOT measurements were made 5 days before the biopsy on average, i.e., 43 % of the sample); (2) prior to core biopsy in 2 subjects (DOT measurements were made 8 days prior to excision of the entire tumor on average, i.e., 9 %), and (3) ≥ 2 weeks after the biopsy and prior to excision of the entire tumor in 10 subjects (DOT measurements were made 18 days prior to excision of the entire tumor on average, i.e., 48 %).

For the full sample of 32 subjects, DOT measurements were performed (1) prior to any biopsy in 11 subjects (DOT measurements were made 5 days before the biopsy on average, 34 %); (2) prior to core biopsy in 6 subjects (DOT measurements were made 18 days prior to excision of the entire tumor, 19 %), and (3) ≥ 2 weeks after the biopsy and prior to excision of the entire tumor in 15 subjects (DOT measurements were made 22 days prior to excision of the entire tumor on average, 47 %). We did not observe any biopsy-induced bruises (black or blue) in any subjects, i.e., the patients' biopsy sites healed sufficiently that no visible signs were apparent. In addition, by comparing optical data obtained before versus after biopsy, Choe et al. [6] explicitly tested whether such biopsies affect tumor optical contrast, and no significant differences were found in that investigation. Therefore, we expect that the DOT patient measurements in the present work were not influenced by the biopsies. Different numbers of subjects were studied for each biomarker for various reasons, as described below (also see Additional file 1: Table S1).

Ki67

Samples from 18 out of the 21 subjects initially chosen for Ki67 evaluation were used; two slides lacked sufficient cancer tissue and one slide had uneven thickness (which caused out-of-focus microscopic imaging for this computer-assisted analysis). For the calculation of the tumor-to-normal ratio of Ki67 (rKi67), we only used samples from subjects with Ki67 expression in normal tissues, which corresponded to 9 out of the 18 subjects. These 9 cases were found to be pre-menopausal patients. All 18 subjects were used for the cancer-only analysis; Ki67 expression in confirmed cancer tissues from all patients was available for this analysis. (Note, this number is the numerator of the tumor-to-normal ratio (rKi67) for the patients who had both tumor and normal tissue Ki67 expression.) Samples were available for six subjects only for the comparison study between rMMRO₂ (see *Diffuse correlation spectroscopy (DCS)*) and relative mammary metabolic rate of oxygen (rMMRO₂) and Ki67 expression level, because blood flow data are required to calculate rMMRO₂, and blood flow was measured by diffuse correlation spectroscopy in only six of the subjects included in this retrospective analysis. Among the six subjects,

five had low Ki67 values and belonged to the Ki67-negative group; samples from these subjects were investigated for correlation with rMMRO₂. Of these six, only two subjects had Ki67 expression in normal tissues and were therefore available for rMMRO₂ versus rKi67 analysis.

CD34

Only the vascular structures of cancer tissues were available for study, because normal vessels were rarely observed adjacent to the biopsied cancer tissues. Generally, normal vessels appear far outside of the entire tumor structure, and therefore normal vessels were seldom observed in the small specimens. Of the 21 subjects, 19 were available for this analysis, because one specimen slide had uneven thickness and did not have sufficient cancer tissue for analysis.

Nuclear compactness

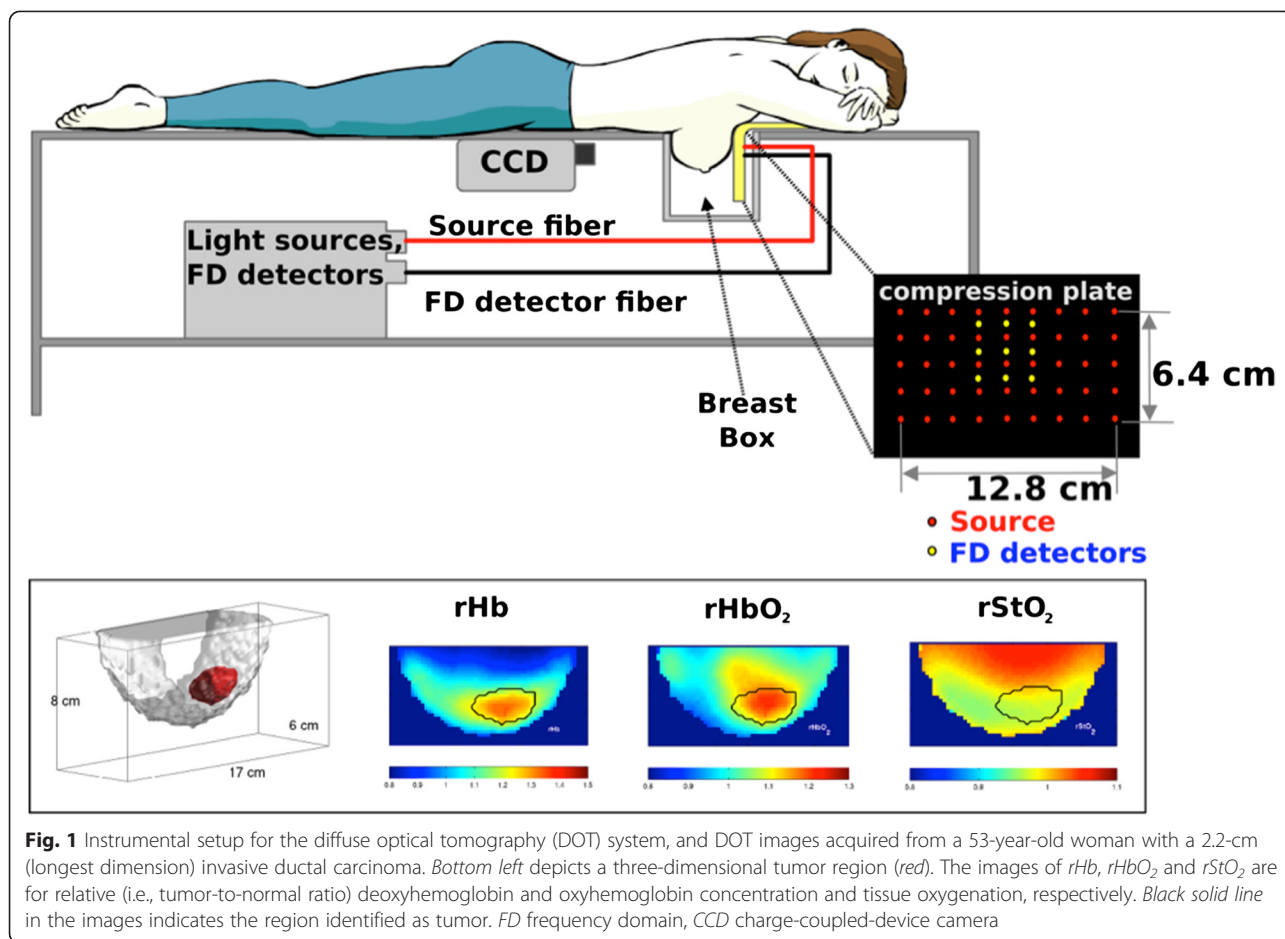
Samples from all 21 subjects were available for the nuclear compactness analysis.

Other analyses

In addition to the 21 subjects described above, we analyzed samples from an additional 11 subjects for whom DOT images and clinical pathology reports were available. Unfortunately, there were no tissue samples from these subjects for the additional staining described above. These additional subjects were included in some of our analyses to investigate the relationship between DOT physiological parameters, hormonal and genetic features, and breast cancer tumor grade. Among the total of 32 subjects, modified Bloom-Richardson scores were available for 29 subjects, and cancer hormonal status was reported for 31 subjects.

Diffuse optical tomography (DOT)

Details of the DOT system, measurement procedure and reconstruction algorithm are described in Choe et al. [6]. Briefly, the instrument employed the parallel-plate geometry for source and detector planes; a breast box was utilized wherein breasts were positioned while the subject was lying in a prone position. The breasts were compressed mildly to hold them in a stable position. An outline of the breast surface was obtained by a 16-bit charge-coupled-device (CCD) camera. An Intralipid/ink (Baxter, Deerfield, IL) solution with optical properties similar to breast tissue filled the box to form a background diffuse medium and thereby reduce dynamic-range requirements. Four lasers at 690, 750, 786 and 830 nm were modulated at 70 MHz, and two lasers at 650 and 905 nm were used in continuous-wave (CW) mode. Laser light was delivered to 45 source locations using optical switches shown as red dots in Fig. 1. The source plane also had nine fibers embedded within it (yellow dots in Fig. 1) for



detection of modulated light in the remission geometry. These frequency-domain (FD) measurements provided bulk optical properties that served as initial guesses for further reconstruction. CW-domain transmission measurements were made through a transparent window utilizing the CCD camera. The 45 source locations and the CCD camera enabled collection of a very large dataset for reconstruction of 3-D optical images. The diffuse optical data for the images were acquired in 8–12 minutes. Following the subject measurement, a phantom calibration measurement was performed after fully filling the breast box with the same Intralipid/ink solution and covering the top of the box with a silicone slab to mimic the chest wall. A brief description on the reconstruction steps for generating 3-D optical images is included in Additional file 1. Three-dimensional images of oxyhemoglobin, deoxyhemoglobin and total hemoglobin concentrations, tissue oxygenation and reduced-scattering coefficients were obtained.

Determination of tumor boundaries in the optical images has previously been described [6]. Briefly, an approximate location for the tumor was first selected based on magnetic resonance imaging (MRI), x-ray mammography

and ultrasound images. In the selected area, the location of the maximum intensity of the optical attenuation coefficient at 786 nm was found (tumors have higher optical attenuation coefficients than normal tissues), and thereafter, a 3-D region was grown using the maximum intensity location as a seed with a cutoff at full-width at half-maximum. During this process, we examined the selected tumor region to determine whether the optical images provided tumor location and size consistent with the radiological imaging methods. Tumor values for each optically derived parameter are extracted by averaging each parameter over this entire tumor volume. Normal tissue values are derived by averaging overall normal tissues (i.e., excluding the tumor) in the same breast. The tumor-to-normal ratio of each parameter was thus calculated; the letter ‘r’ is added in front of the abbreviation of each parameter to indicate a relative (tumor-to-normal) value, for example, relative tissue oxygen saturation ($rStO_2$), relative total hemoglobin (rTHC), relative oxyhemoglobin ($rHbO_2$), relative deoxyhemoglobin (rHb) concentrations, and relative reduced-scattering coefficients ($r\mu_s$).

Diffuse correlation spectroscopy (DCS) and relative mammary metabolic rate of oxygen (rMMRO₂)

DCS was used to measure a blood flow index that, in turn, was used to calculate a tumor-to-normal ratio of mammary metabolic rate of oxygen of a subset of subjects ($n = 6$) who also had Ki67 analysis. The DCS measurements were performed on the same day as the DOT measurements. Details about the DCS instrument, the mathematical model and the input parameters have been described by Choe et al. [16]. Briefly, DCS measures a temporal intensity autocorrelation function of the detected light, and the decay rate of the autocorrelation function indicates blood flow, for example, faster decays correlate with faster blood flow. A tissue blood flow index, BFI, was derived from the measured DCS temporal light intensity autocorrelation functions by fitting the data to a solution of the correlation diffusion equation in the homogeneous semi-infinite geometry [1]. The DCS system employed a 786-nm-long coherence laser as a light source (delivered through a multi-mode fiber), a single-mode fiber was used to collect light and a fast-photon-counting avalanche photodiode was used for detection. A custom-built correlator board determined the normalized temporal intensity autocorrelation functions of the detected light.

For in vivo measurements, the tumor location in a supine position was identified either by palpation or by consulting radiology reports. Then a handheld probe with one source and one detector fiber 2.5 cm apart was gently placed on the breast tissue and data were collected from 10–12 points (1 cm apart) aligned on a line straddling the tumor center. The tumor and normal tissue points were averaged, respectively, to obtain one representative tumor and one normal region blood flow index for each subject. The relative blood flow (rBF) was calculated by taking the ratio between tumor and normal region BFI values.

Part of the analysis of this paper employed a mammary oxygen metabolism model that was introduced by Zhou et al. [13]. The tumor-to-normal ratio of the (relative) mammary metabolic rate of oxygen (rMMRO₂) employed herein was slightly modified from the version introduced by Zhou et al. to monitor metabolic changes in breast tumors during neoadjuvant chemotherapy. rMMRO₂ is expressed as follows:

$$rMMRO_2 = \frac{\gamma_N}{\gamma_T} \cdot \frac{rHb}{rTHC} \cdot rBF$$

where γ represents the percentage of blood volume contained in the venous component of the vascular system (i.e., $StO_2 = (1 - \gamma)SaO_2 + \gamma SvO_2$ where SaO_2 and SvO_2 are arterial and venous oxygen saturation, respectively [45]), the subscript T indicates tumor and N indicates

normal tissue, and rBF is the tumor-to-normal ratio of BFI quantified by DCS [16]. Note, the so-defined rMMRO₂ is closely related to the cerebral metabolic rate of oxygen extraction (CMRO₂) parameter that has been studied extensively for metabolism measurements in the brain [1, 46–49].

Microscopic analysis of tissue specimens

Slide selection and immunohistochemical analysis

Tissue blocks that include cancer tissues were reviewed, and blocks with the most cancer tissue were selected by a pathologist (MDF) for microscopic analysis of cancer properties. Immunohistochemical analysis of formalin-fixed paraffin-embedded tissue was performed using antibodies against Ki67 (Clone MIB-1; DAKO, Carpinteria, CA M7240; 1:20 dilution) and CD34 (Clone My10; BD Biosciences, San Jose, CA 347660; 1:80 dilution) on separate slides from the selected tissue block. Staining was done on a Leica Bond™ instrument using the Bond Polymer Refine Detection System (Leica Microsystems, Buffalo Grove, IL AR9800). Heat-induced epitope retrieval was required for Ki67 and this was performed for 20 minutes with ER1 solution (Leica Microsystems AR9961).

Digital analysis of the staining

The stained slides were scanned using Aperio ScanScope (Aperio, Vista, CA, USA) with $\times 20$ objective. In order to account for cancer heterogeneity, multiple regions of interest (ROI) were selected in the cancer and normal tissue samples (i.e., 2–7 ROI depending on the available amount of tissue and degree of heterogeneity) by SHC under the guidance of MDF and DM using the annotation tool of Aperio ImageScope, and MDF re-confirmed the selected ROI tissue types. We noticed that a few extremely dark spots appeared randomly on the slides, mostly clusters of the staining dye. These spots cause errors in the analysis, because the algorithm selects pixels with lower intensity than a threshold value as positive nuclei, and the dark spots have extremely low intensity values that can result in mistaken selection as strongly positive nuclei; thus, those areas were excluded manually using the annotation tool. An area-weighted average of the multiple ROI for each subject was used in the correlation study. The Ki67 and CD34 stained areas were differentiated from the non-stained areas by setting relative values of red-green-blue (RGB) optical densities (for defining the color of the stain) and the intensity of the defined color. These values were optimized by iterative adjustments: the detection algorithm with the set values was applied to multiple sample cases and the results were visually examined by MDF if the assigned color on the nuclei matched the actual features of the nuclei (Fig. 2). For Ki67 detection, the Ki67-expressing nuclei percent of the total number of nuclei in an ROI was

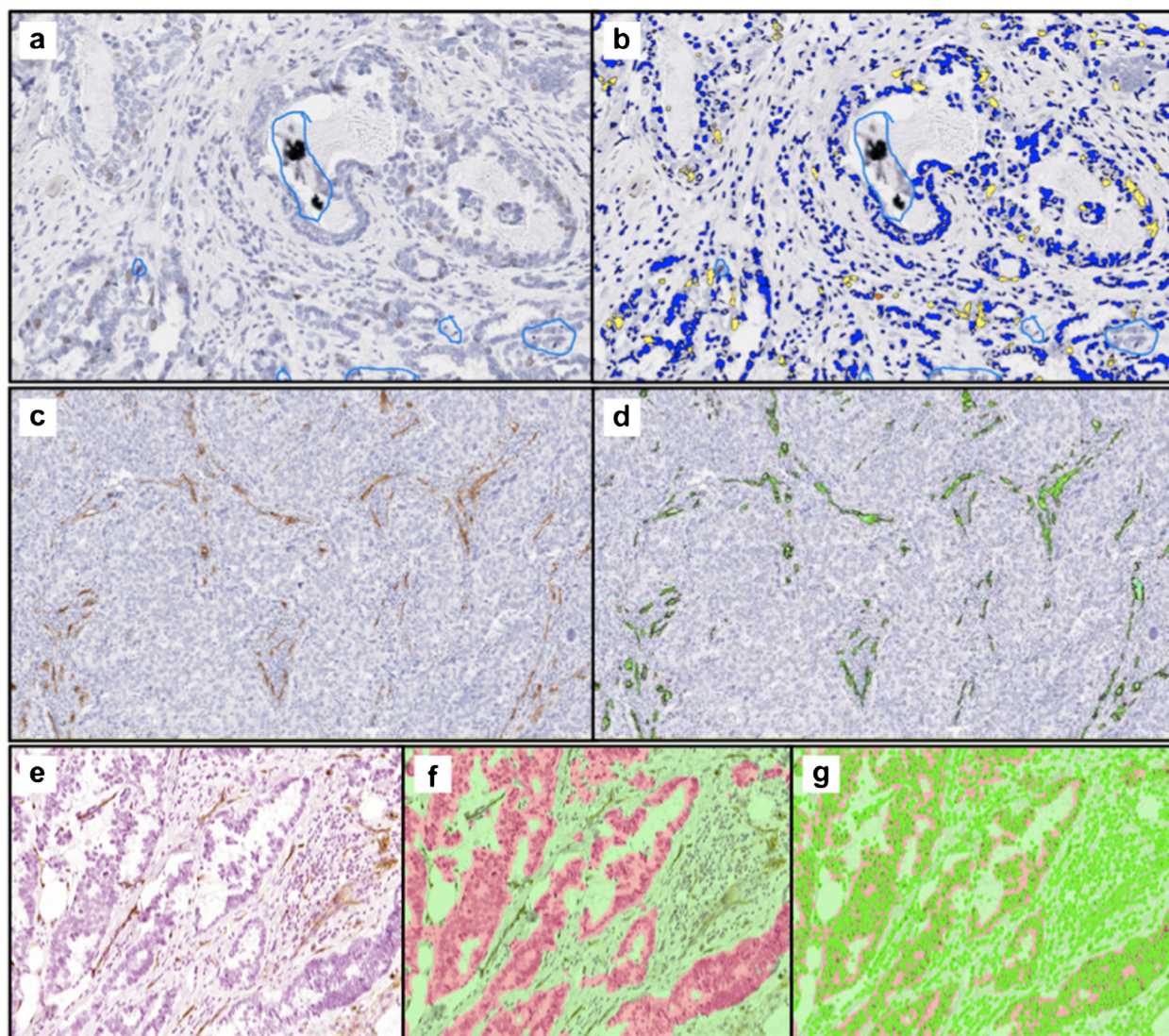


Fig. 2 **a** Ki67-expressing nuclei were stained by MIB-1 and appear as *brown spots*. Abnormal extreme dark spots caused errors in automated analyses and were excluded manually (see *blue loops*). **b** *Dark blue* regions designate cells in which the nuclei did not express Ki67, and *yellow* and *orange* regions designate cells with Ki67-expressing nuclei (note, *orange* signifies more intense expression). **c** CD34-stained vessels appear *brown*. **d** Detected vessels were highlighted in *neon green* using the Aperio algorithm. **e** The raw image was segmented into cancer (*pink*) versus non-cancerous (*green*) areas as shown in **f**. **g** Individual cells were detected as *neon green* loops. Based on nuclear shape, the compactness of the nuclei was calculated using inForm 1.0.2 (Perkin Elmer)

calculated using the Aperio immunohistochemistry (IHC) nuclear image analysis algorithm (version 10.2). We counted 3278 nuclei per subject (on average) with a range of 270 to 4114 in the 15 subjects (Fig. 2a, b). Then, the tumor-to-normal ratio of Ki67-expressing nuclei was calculated to derive relative Ki67 values (i.e., rKi67). For this analysis, after subjects were selected and slides obtained, only normal glandular tissues with Ki67 expression (within each slide) were used.

For CD34-stained vessel properties, the Aperio micro-vessel analysis algorithm was used. An average of 118 vessels per ROI were detected (n = 19) and used for the

quantification of micro-vessel density (number of vessels per unit area (μm^2)), mean vessel and vascular area and the ratio of stained area to ROI area. Note, the mean vessel area includes the lumen in addition to the endothelial cells that form the vascular structure. To calculate the mean vessel/vascular area for each ROI, only vessels with a closed cross-section were automatically detected in the ROI first, then a mean value of the vessel/vascular area was calculated for each ROI (Fig. 2c, d).

For the nuclei morphology analysis, binary segmentation (cancer versus non-cancer) was used instead of the ROI selection. The digitized slides were converted to a

multispectral data stack using Nuance 2.10.0 (Perkin Elmer). Then, using inForm 1.0.2 image analysis software (Perkin Elmer), tumor and normal tissues were segmented by the training algorithm, and the nuclear shapes were detected and used for the calculation of the nuclear compactness (Fig. 2e, f, g). Nuclear compactness is calculated using the following equation:

$$\text{Compactness} = 4\pi \times \text{Area}/\text{Perimeter}^2.$$

Statistical analysis

We used Pearson’s correlation coefficient (corr. coef.) to assess the linear association between the mean of the DOT physiological parameters and the microscopically assessed histopathological biomarkers. We generally report on possible linear relationships between the DOT physiological parameters and several biomarkers. We also used Spearman’s correlation coefficient to further explore the possibility of a monotonic, but non-linear relationship. The Wilcoxon ranked sum test was used to ascertain differences in DOT parameters in Ki67-positive and Ki67-negative groups (those defined by the 15 % cutoff threshold). The type I error rate was 0.05, and corrections were not made for multiple comparisons in this exploratory study.

Results

Association of DOT parameters with Ki67 cancer proliferation

The percent range of the Ki67-nuclei used for determination of tumor-to-normal ratio of Ki67 (i.e., rKi67) varied from 0.05–23.45 % in cancer tissues (n = 9), and from 0.19–7.41 % in normal tissues (n = 9) (see Additional file 1: Table S2). More subjects were included for the DOT versus cancer-only Ki67-expression comparison study,

and the Ki67 range for this latter investigation was 0.05–27.77 % in cancer tissues (n = 18). Among the DOT parameters, rStO₂ and rHbO₂ were linearly correlated with rKi67 as shown in Fig. 3 and Table 1 (Pearson correlation of 0.89, *p*-value 0.001 for rStO₂, and Pearson correlation of 0.68, *p*-value 0.044 for rHbO₂). Also, for cancer-only Ki67, rHb was inversely correlated with cancer Ki67 percent (Spearman correlation of –0.62, *p*-value 0.007; see Additional file 1: Table S3 for all correlation values between DOT physiological parameters and cancer Ki67 percent). The range of Ki67 values and those of other molecular biomarkers used in the remainder of the correlation studies are tabulated in Additional file 1: Table S4.

Clinically, Ki67 expression is used as a biomarker for cancer proliferation. Tissue is termed Ki67-positive (or Ki67-negative) if the fraction of nuclei expressing Ki67 is above (or below) a specified cutoff, which is commonly set at 15 % [50–53]. In the present study, we tested whether DOT and DCS parameters are significantly different in more proliferative cancers compared to less proliferative cancers (i.e., as determined by the 15 % Ki67 cutoff). In this scenario, only rHb was found to differentiate Ki67-positive from Ki67-negative cancer, with lower values of rHb occurring for Ki67-positive cancer (*p*-value 0.01, Wilcoxon ranked sum test, Fig. 4a; see Additional file 1: Table S5 for values of all DOT physiological parameters of Ki67-positive and Ki67-negative cancer groups). Among the available subjects, 15 were Ki67-negative and 3 were Ki67-positive, but a *p*-value of 0.01 suggests the pilot result may be significant, even with the limited sample size.

In the comparison between rMMRO₂ and Ki67 expression level, not all the subjects were measured with DCS: six subjects were available for analysis of the relationship between rMMRO₂ and cancer-Ki67, and two subjects for analysis of the relationship between rMMRO₂ and rKi67.

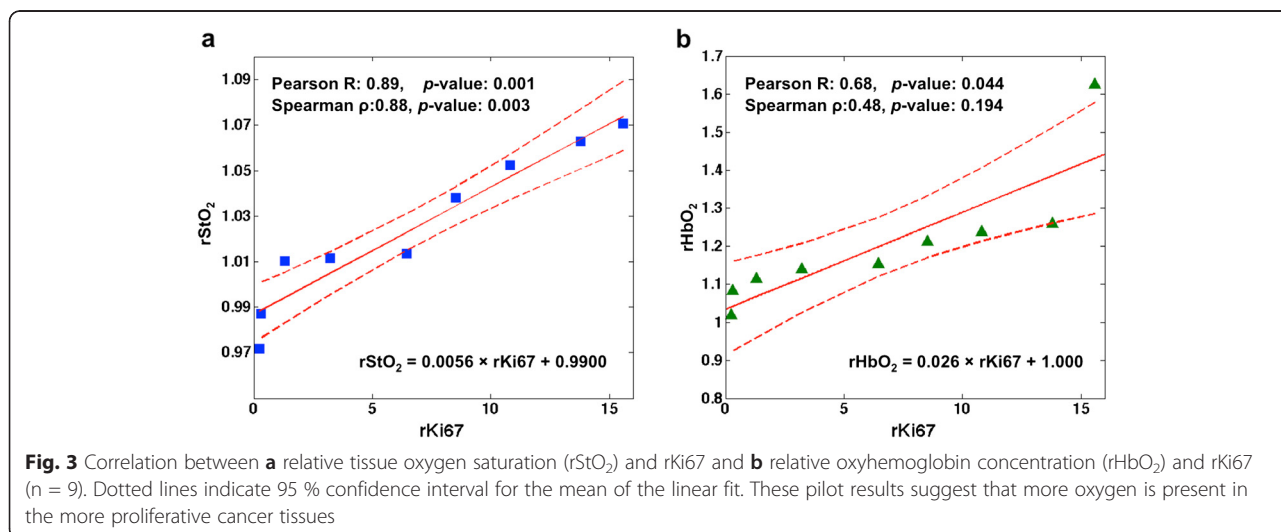


Table 1 Correlation between rKi67 and various relative DOT parameters

Analysis of correlation with rKi67 %	rStO ₂	rTHC	rHbO ₂	rHb	rμ _s '
Pearson's correlation coefficient	0.89	0.55	0.68	-0.33	0.44
P-value	0.001	0.126	0.044	0.393	0.24
Spearman's correlation coefficient	0.88	0.40	0.48	-0.43	0.35
P-value	0.003	0.291	0.194	0.250	0.359

Relative tissue oxygen saturation (rStO₂) and relative oxyhemoglobin concentration (rHbO₂) were highly correlated with rKi67. Results with statistical significance (*p*-value <0.05) are shown in bold (*n* = 9). rTHC denotes relative total hemoglobin concentration, rHb denotes relative deoxyhemoglobin concentration, and rμ_s' denotes relative reduced-scattering coefficients

Among the six subjects, five had low Ki67 values and belonged to the Ki67-negative group; the Ki67 percentage in these subjects exhibited significant inverse linear correlation with rMMRO₂ (Pearson correlation -0.95, *p*-value 0.014, Fig. 4b). One subject belonged to the Ki67-positive group and did not follow the linear trend observed for the Ki67-negative group in Fig. 4b (the Ki67-positive subject is not shown). On analysis of the two subjects in whom rKi67 was compared to rMMRO₂, higher rKi67 was associated with lower rMMRO₂.

In addition, we ran predictability tests using the >15 % threshold to define Ki67-positive cancer. In this case, we found high negative predictive values (i.e., 100 %) for detection of non-proliferative cancer with specific thresholds for each of the DOT parameters. For example, if values of rHb <1.1 are considered proliferative, then 100 % of the negative predicted values are truly negative. However, given the small dataset (*n* = 18), the implications of this predictability result should not be overestimated. The main caveat is that only three subjects were in the Ki67-

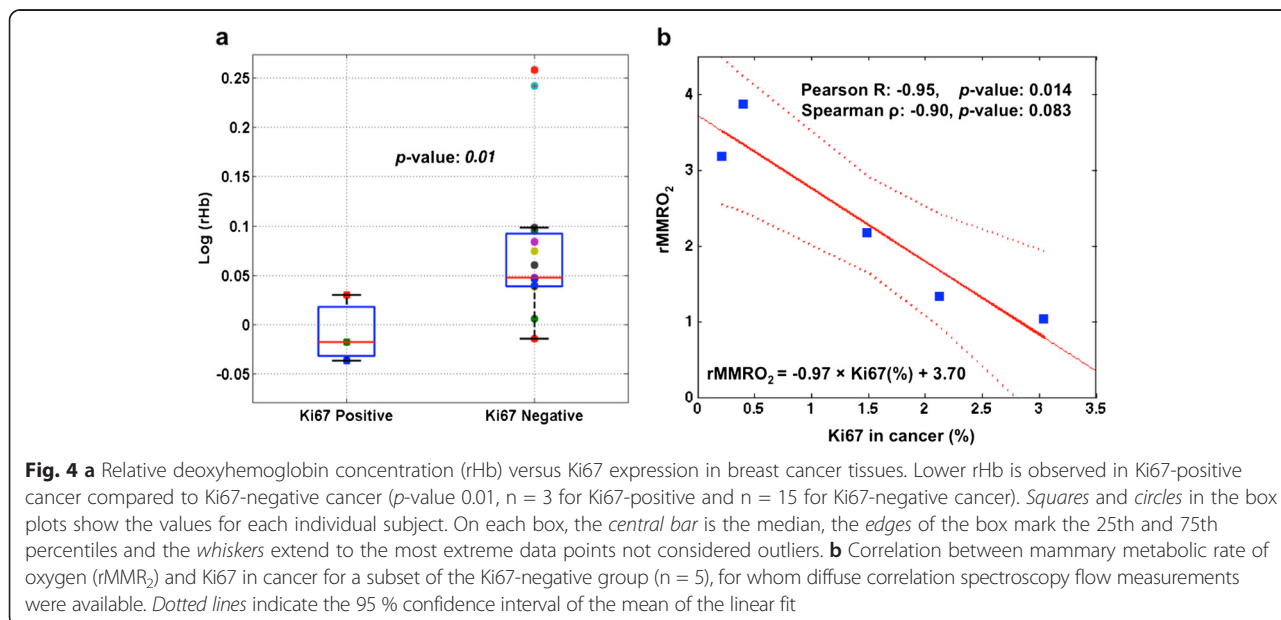
positive group (15 subjects were in the Ki67-negative group). Thus, it is difficult to ascertain the heterogeneity of the Ki67-positive group. Albeit imperfect, the strong correlation and predictability obtained from our DOT data suggest that DOT holds potential to predict proliferative status of breast cancer non-invasively and that the method is deserving of further exploration. This result can also aid the planning of a future study that will require more Ki67-positive samples.

Association between DOT parameters and CD34 stained vascular properties

Blood vessels in cancer tissues were detected and analyzed using the CD34 antibody. Among all the vascular properties accessible to this staining, i.e., micro-vessel density, mean vessel/vascular area, and ratio of stained area to analysis area, only mean vessel area (MVA) was significantly and linearly correlated with rTHC and rHbO₂ (Pearson correlation coefficient of 0.51, *p*-value 0.027 and Pearson correlation of 0.48, *p*-value 0.038, respectively; see Fig. 5, Table 2). However, it should be noted that rTHC, rHbO₂ and rμ_s' had higher ranked monotonic correlation with MVA (Spearman correlation coefficient of 0.67, *p*-value 0.002; Spearman correlation of 0.63, *p*-value 0.005; and Spearman correlation coefficient of 0.52, *p*-value 0.024, respectively).

Association of DOT parameter with nuclear morphological analysis

On nuclear morphology analysis there was weak positive correlation between rHbO₂ and the tumor-to-normal ratio of nuclear compactness (Pearson correlation coefficient of 0.43, *p*-value 0.049, *n* = 21; see Additional file 1:



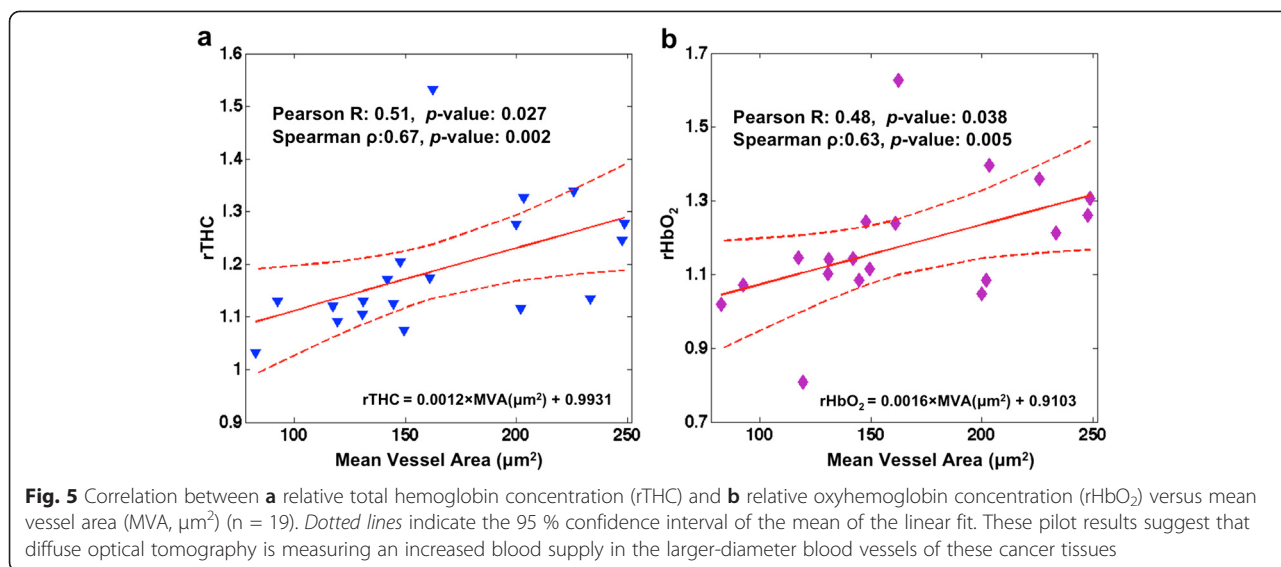


Table S6 for values for correlation between all DOT physiological parameters and relative nuclear compactness.). Additionally, rStO₂ was weakly positively correlated with cancer nuclear compactness (Spearman correlation coefficient of 0.47, *p*-value 0.034; see Additional file 1: Table S7 for values for correlation between all DOT physiological parameters and relative nuclear compactness.). When the nucleus is spherical, then the compactness is unity. In our case, all of the measured compactness values were smaller than unity.

As the tumor grade worsened (i.e., became higher), although a slight trend of increasing rStO₂ and decreasing rHb was observed, it was not statistically significant (n = 29). Lastly, distinct differentiation of DOT parameters was not observed in any of the estrogen receptor (ER)-, progesterone receptor (PR)- and human epidermal growth factor-2 (HER2)-positive versus -negative groups (n = 31).

Differences between breast cancer subtypes

All but one of the samples used for the rKi67 correlation analysis were luminal A subtype; the other sample was basal-like and its rKi67 value was the median. For Ki67

Table 2 Correlation between CD34-stained mean vessel areas (MVA) and DOT parameters

Analysis of correlation with MVA (μm ²)	rStO ₂	rTHC	rHbO ₂	rHb	ρ _s '
Pearson's correlation coefficient	0.26	0.51	0.48	-0.10	0.32
<i>P</i> -value	0.291	0.027	0.038	0.684	0.182
Spearman's correlation coefficient	0.45	0.67	0.63	-0.22	0.52
<i>P</i> -value	0.057	0.002	0.005	0.362	0.024

MVA was correlated with relative total hemoglobin concentration (rTHC), relative oxyhemoglobin concentration (rHbO₂) and relative reduced-scattering coefficients (ρ_s') (n = 19). Results with statistical significance (*p*-value <0.05) are shown in bold. DOT denotes diffuse optical tomography, rStO₂ denotes relative tissue oxygen saturation, and rHb denotes relative deoxyhemoglobin concentration

(not rKi67) in cancer tissues, within the luminal A subtype (n = 12), negative correlation was observed between Ki67 percent and rHb (Spearman correlation of -0.57) with a trend towards statistical significance (*p*-value 0.059). No trend was observed within the basal-like subtype (n = 4). Correlation was not analyzed separately in two subjects with HER2-positive cancer due to small sample size.

In the CD34 comparison studies, within the basal-like subtype group (n = 4), the Pearson correlation coefficient between MVA and rTHC was 0.96 (*p*-value 0.045). Within the luminal A group (n = 12), several statistically significant correlations were observed between MVA and rTHC (Spearman correlation of 0.69, *p*-value 0.016), rHbO₂ (Spearman correlation of 0.71, *p*-value 0.012) and ρ_s' (Spearman correlation of 0.62, *p*-value 0.035). Two subjects with HER2-positive and one with the luminal B subtype were not included in the subtype correlation analysis.

In the nuclear compactness comparison study, within subjects with the basal-like subtype (n = 5), there was evidence of positive correlation between ρ_s' and the nuclear compactness of cancer cells (Pearson correlation of 0.87) with a trend towards statistical significance (*p*-value 0.057). No correlation was observed within the luminal A subtypes (n = 13). Two subjects with HER2-positive cancer and one with the luminal B subtype were not included in the subtype correlation analysis.

In addition, among the group that included subjects only with DOT images and subtype information (no tissue slides, n = 32), we found that basal-like (n = 6) and HER2-positive (n = 3) subtypes were significantly differentiated (*p*-value 0.023) by rTHC values, although the sample size was very small.

Discussion

Our study revealed that the tumor-to-normal (relative) ratio of Ki67-positive nuclei is correlated positively with $rStO_2$ measured by DOT. This observation suggests that the more proliferative cells reside in more oxygenated environments, i.e., more oxygenated compared to surrounding normal tissues. Further, the percentage of Ki67 nuclei in cancer-only tissues was inversely correlated with DOT-measured rHb, and in a subset of subjects with low Ki67 expression, an inverse correlation between Ki67 expression level and $rMMRO_2$ [13] was observed ($R = -0.95$, p -value 0.014). We found that MVA correlated positively with DOT-measured relative total hemoglobin and oxyhemoglobin concentration; this observation suggests that an increased blood supply to the tumors is due to increased blood vessel size rather than blood vessel density. The combination of these pilot results suggests that more proliferative cancer cells demand less oxygen. Finally, we observed that in less oxygenated environments, cell nuclei tend to exhibit a more elongated shape. Overall, the results of the pilot study corroborate expectations that macroscopic measurements of breast cancer physiology using DOT can reveal information about the microscopic pathological properties of breast cancer and hold potential to complement pathological biomarker information.

The Ki67 proliferation biomarker was chosen because it is one of the biomarkers of choice for determination of cancer severity [32, 54]. Baseline measurements of Ki67 have correctly predicted patient prognosis [32, 55, 56], and high levels of Ki67 predict better responses to chemotherapy [31, 57, 58]. The percentage ranges of the Ki67-nuclei of our tissue samples are consistent with reported values in the literature, including those obtained from automated evaluation methods [59, 60]. Specifically, in two studies, more than 72 % of 379 patients [59] and 50 % [61] of 3658 patients had cancer with <15 % Ki67 expression, and in a study by Konsti et al., the mean Ki67 expression level in 1334 subjects was 8.8 % [60]. By contrast, Ki67 expression level in normal breast tissues was found to be less than 3 % in several studies [32, 62–64]. We observed that $rKi67$ correlated positively with $rStO_2$ and $rHbO_2$. Our finding of correlation between $rStO_2$ and $rKi67$ is supported by the observations of Ueda et al. [30] who measured higher tissue oxygenation in subjects with complete pathological response (i.e., compared to those with incomplete pathological response) prior to neoadjuvant chemotherapy. In our study, patients with higher levels of tissue oxygenation exhibited a high level of Ki67, and the combination of all reports supports the well-known finding that a high Ki67 level predicts better response to neoadjuvant chemotherapy [31, 57, 58]. Ki67 is known to be correlated with apoptosis [32, 65, 66]. One of our previous works showed simultaneous increase of tissue oxygenation and temperature caused by an uncoupled apoptotic state

at the beginning of neoadjuvant chemotherapy in a subject who was found to have complete pathological response [19]. The strong correlation between Ki67 and tissue oxygenation found in this current work combined with the previous result supports the correlation between Ki67 and apoptosis in breast cancer.

We also found that rHb was inversely correlated with cancer-only Ki67, and that rHb was lower in Ki67-positive cancer compared to Ki67-negative cancer (using the 15 % cutoff, note this cutoff can vary from 10–20 % in different clinics). It is noteworthy that in the tumors with rHb smaller than unity (i.e., less deoxyhemoglobin in the tumor than surrounding normal tissues), the $rStO_2$ was larger than unity (higher tissue oxygenation in the tumor compared to normal tissues): this finding suggests that in more proliferative tumors, oxygenated blood is supplied to the tumor but the excess oxygen is not fully used.

Importantly, we took an additional step to further investigate the relationship between proliferation and oxygen metabolism. Specifically, we calculated the tumor-to-normal $rMMRO_2$ in a subset of the data; only a small number of subjects among the population were studied in this retrospective analysis because only a small number were measured with DCS, which provides the relative blood flow (rBF) data needed to calculate $rMMRO_2$. In the tumors with very low Ki67 expression, there was inverse correlation between oxygen metabolism and Ki67 level. In total, the full set of Ki67/DOT-parameter comparison studies suggest that higher tissue oxygenation tends to arise in cancers with higher expression of Ki67, lower deoxyhemoglobin concentration is often present in more proliferative cancers, and tumors with $rHb < 1$ have $rStO_2 > 1$. Although more blood is supplied to the cancer compared to normal tissue (i.e., all subjects had $rTHC > 1$), the level of oxygenated hemoglobin in the tumor remains high, and less oxygen is utilized for cancer metabolism (yielding a lower tumor rHb).

These preliminary conclusions about the relationship between proliferation and oxygen metabolism in breast cancer can be explained by the Warburg effect [44], which accounts for the fact that some cancer cells go through glycolysis to increase biomass without using oxygen, despite sufficient oxygen in the tissue environment [67, 68]. While these findings are interesting, we note that our model for $rMMRO_2$ has several simplifying assumptions about the vasculature and tissue heterogeneity [1], and the DCS and DOT measurements utilized different measurement geometries. In the future, it would be interesting to include measurement of Myc, a glycolysis marker, which would enable further exploration of the relationship between cancer metabolism and proliferation [69].

Finally, we note that in the $rKi67$ /DOT correlation study, all of the samples with Ki67 expression in normal tissues were obtained from premenopausal patients.

Therefore, it is possible that the premenopausal status of all subjects used for the rKi67/DOT correlation could have contributed to the correlations observed. Greater proliferation in normal or benign tissues has been observed in premenopausal women [70]. Ultimately, when more tissues become available, we will be able to ascertain the importance of menopausal status.

CD34-stained vascular properties were also compared to DOT parameters. CD34 is expressed in the endothelial cells of micro-vessels that migrate during angiogenesis [33, 71, 72], and CD34 was used to assess vascularity in the tumor samples. In the samples studied, only tumor areas were studied so that only tumor vascularity was assessed. Distant normal tissue was not available for investigation of the patient biopsies. We chose CD34 instead of CD31, because a prior investigation [72] compared various monoclonal antibodies for angiogenesis assessment and found that the antibody to CD34 was more reliable than the CD31 antibody. Among compared vascular parameters, MVA in cancer tissues was correlated with rTHC, rHbO₂ and rμ_s'. These results met our expectation that DOT measures increased blood supply to cancer through the abnormally dilated blood vessels in cancer tissues [73].

The DOT tumor-to-normal tissue parameters have previously been shown by Choe and co-workers [6] to exhibit excellent differentiation between benign and malignant lesions. However, the association between DOT parameters and tumor pathology was not explored. Here, the use of tumor-to-normal ratios for both optical and histological data minimized the effects of inter-subject absolute property variation. Optical measurement of total hemoglobin concentration has been compared with histologically evaluated vascular properties in other studies. In a study by Srinivasan et al. using near-infrared tomography, a correlation value of 0.3 was obtained (*p*-value not reported) for association between total hemoglobin concentration and the vessel density in 12 subjects, including both benign and malignant tumors [38]. Zhu et al. measured total hemoglobin concentration using a combined system of ultrasound and near infrared optical imaging, observing correlation between total hemoglobin concentration and micro-vessel density (MVD, $R = 0.64$, *p*-value <0.05, 10 samples from 6 subjects) [39]. In a study of neoadjuvant chemotherapy responders, Pakalniskis and colleagues observed significant correlation between CD105-stained MVD and total hemoglobin concentration in subjects with complete pathological response, but not in those with partial pathological response (*p* <0.001, *n* = 7, correlation coefficient not reported) [37]. In our study, vessel area was more strongly correlated (Spearman correlation coefficient of 0.67, *p*-value 0.002, *n* = 19) with total hemoglobin concentration than the MVD, which was not significantly correlated with total hemoglobin concentration. We note that

generally the various studies reported in the literature differ in the antibodies employed, the analysis methods utilized (automatic vessel detection versus manual hotspot counting), and, in some cases, in the way parameters are defined. For example, in our work, MVD was defined as the number of vessels per unit area (μm²), but in the work of Pakalniskis et al., MVD is defined as a percentage of the combined areas of CD105-stained vessels per total area of the slide.

Nuclear morphology has been shown to exhibit a more elongated shape in cancer cells than normal cells [34–36]. Hajihashemi et al. observed higher μ_s' and more elongation in cancer nuclei than the normal or benign tissues [34, 35]. In our study, the tumor-to-normal ratio of nuclear compactness was smaller than 1, which indicates that the tumor had more elongated nuclei than the normal tissues. The relative and cancer nuclear compactness was only weakly correlated with rHbO₂ and rStO₂, respectively, suggesting that in a less oxygenated environment, the nuclei tend to be more elongated.

Looking forward, tissue samples from normal breast tissue need to be collected. The correlation between rTHC and the CD34-stained MVA could be augmented and improved, for example, if normal vessels were available. Although our statistical power to detect clinically relevant associations is limited by the number of samples available for analysis, the cohort we have investigated has yielded some potentially important findings. Further studies will be needed to confirm the results reported here. In future studies, tissues sent out for the trial, the Investigation of Serial studies to Predict Your therapeutic response with imaging and molecular analysis (I-SPY, American College of Radiology and Imaging Network Protocol 6657), will be also included. Finally, it is noteworthy that inclusion of multiple ROI in each specimen produced stronger correlation by partially accounting for cancer heterogeneity.

Conclusion

This pilot study has shown that DOT-measured and DCS-measured breast cancer physiological parameters are correlated with proliferation of cancer cells and with formation of abnormally dilated blood vessels in cancer. The results suggest that DOT may be useful as a non-invasive assessment tool for specific cancer biomarkers, especially for cancer proliferation. As Ki67 is a well-known prognostic index and an early predictor of tumor response to chemotherapy, the high correlation between Ki67 and DOT-measured tissue oxygenation further suggests the potential of optical imaging and monitoring. The optical methods utilize non-ionizing radiation and can be easily employed at the bedside. These features, coupled with predictive capability, are particularly attractive for patients who need frequent monitoring, for example, during chemotherapy, and for women with radiographically dense breast tissue.

Additional file

Additional file 1: Table S1. Subjects for the correlation studies between diffuse optical tomography (DOT) parameters versus various cancer biomarkers. **Table S2.** Cancer and normal Ki67 values used for the calculation of tumor-to-normal ratio of Ki67. **Table S3.** Correlation between cancer Ki67 percent versus DOT-relative parameters. **Table S4.** Range of values of the biomarkers used for the correlation studies. **Table S5.** DOT parameters for the Ki67-positive and Ki67-negative cancer groups. **Table S6.** Correlation of relative nuclear compactness versus DOT parameters. **Table S7.** Correlation of cancer nuclear compactness versus DOT parameters. DOT three-dimensional (3-D) image reconstruction steps.

Abbreviations

3-D: three-dimensional; AD: Angela DeMichele; AGY: Arjun G. Yodh; BFI: tissue blood flow index; BJC: Brian Czerniecki; CCD: charge-coupled-device; CMRO₂: cerebral metabolic rate of oxygen extraction; corr. coef: correlation coefficient; CW: continuous-wave; DCS: diffuse correlation spectroscopy; DM: Daniel Marinéz; DOT: diffuse optical tomography; DRB: David R. Busch; ER: estrogen receptor; FD: frequency-domain; FDG: fluorodeoxyglucose; HER2: human epidermal growth factor receptor 2; HK: Helen Kim; IHC: immunohistochemical analysis; I-SPY: Investigation of serial studies to predict your therapeutic response with imaging and molecular analysis; JT: Julia Tchou; MAR: Mark A. Rosen; MDF: Michael D. Feldman; MDS: Mitchell D. Schnall; MEP: Mary E. Putt; MVA: mean vessel area; MVD: mean vessel density; NAC: neoadjuvant chemotherapy; NHLBI: National Heart Lung and Blood Institute; NIH: National Institute of Health; PR: progesterone receptor; rBF: relative blood flow; RC: Regine Choe; RGB: red-green-blue; rHb: relative deoxyhemoglobin concentration; rHbO₂: relative oxyhemoglobin concentration; rKi67: tumor-to-normal ratio of Ki67, or relative Ki67; rMMRO₂: tumor-to-normal ratio of mammary metabolic rate of oxygen, or relative mammary metabolic rate of oxygen; ROI: region(s) of interest; rStO₂: relative tissue oxygen saturation; rTHC: relative total hemoglobin concentration; rμ_s: relative reduced-scattering coefficients; SaO₂: arterial oxygen saturation; SHC: So Hyun Chung; StO₂: tissue oxygen saturation; SvO₂: venous oxygen saturation.

Competing interests

The authors declare that they have no competing interests.

Authors' contributions

SHC generated the manuscript, carried out histological image analysis and ran statistical tests. MDF designed and closely oversaw all the histopathological analysis processes and participated in writing up the microscopic analysis. DM prepared digital images of histology slides, participated in designing the histological image analysis methods, provided the facility for the histological image analysis and has been involved in drafting the manuscript. HK gathered and analyzed breast cancer biomarker information and has been involved in drafting the manuscript. MEP advised and performed statistical analysis and helped in drafting and revising the manuscript. DRB participated in DOT data reconstruction and manuscript revision. JT referred subjects to this study for acquisition of clinical data, and helped in drafting and revising the manuscript, and in interpretation of data. BJC and AD referred subjects to this study, provided advice on breast cancer biology, and revised the manuscript. MDS and MAR referred and critically reviewed each subject for this study and provided a significant amount of advice on each subject's clinical condition, provided space for all DOT measurements, and have been involved in drafting the manuscript. AGY helped supervise the overall study and helped significantly in writing the manuscript. RC developed the DOT system, reconstructed DOT physiological values, acquired in vivo data from humans, provided extensive supervision for the project, and wrote large sections of the manuscript. All authors read and approved the final manuscript.

Acknowledgements

This study was supported by NIH R01-CA75124, R01-EB002109, K99/R00-CA126187, P41-EB015893 and Susan G. Komen for the Cure Postdoctoral Fellowship. DRB acknowledges support from the Whitaker award administered by IIE, Thrasher Research Fund Early Career Award, and NIH T32-HL007915. We thank colleagues who kindly offered help for this study, including Wesley Baker who reviewed the rMMRO₂ method.

Author details

¹Department of Physics and Astronomy, University of Pennsylvania, 209 S. 33rd St., Philadelphia, PA 19104, USA. ²Department of Pathology and Laboratory Medicine, The Hospital of the University of Pennsylvania, 3400 Spruce Street, Philadelphia, PA 19104, USA. ³Pathology Core Laboratory, The Children's Hospital of Philadelphia, 3615 Civic Center Boulevard, Philadelphia, PA 19104, USA. ⁴Department of Biostatistics and Epidemiology, University of Pennsylvania, 423 Guardian Drive, Philadelphia, PA 19104, USA. ⁵Division of Neurology, The Children's Hospital of Philadelphia, 3615 Civic Center Boulevard, Philadelphia, PA 19104, USA. ⁶Department of Surgery, The Hospital of the University of Pennsylvania, 3400 Spruce Street, Philadelphia, PA 19104, USA. ⁷Department of Radiology, The Hospital of the University of Pennsylvania, 3400 Spruce Street, Philadelphia, PA 19104, USA. ⁸Department of Medicine, The Hospital of the University of Pennsylvania, 3400 Spruce Street, Philadelphia, PA 19104, USA. ⁹Department of Biomedical Engineering, University of Rochester, 209 Goergen Hall, P.O. Box 270168, Rochester, NY 14627, USA.

Received: 22 October 2014 Accepted: 11 May 2015

Published online: 27 May 2015

References

- Durduran T, Choe R, Baker WB, Yodh AG. Diffuse optics for tissue monitoring and tomography. *Rep Prog Phys*. 2010;73:1–43.
- Leff DR, Warren OJ, Enfield LC, Gibson A, Athanasiou T, Patten DK, et al. Diffuse optical imaging of the healthy and diseased breast: A systematic review. *Breast Cancer Res Treat*. 2008;108:9–22.
- Tromberg BJ, Pogue BW, Paulsen KD, Yodh AG, Boas DA, Cerussi AE. Assessing the future of diffuse optical imaging technologies for breast cancer management. *Med Phys*. 2008;35:2443–51.
- Carp SA, Selb J, Fang Q, Moore R, Kopans DB, Rafferty E, et al. Dynamic functional and mechanical response of breast tissue to compression. *Opt Express*. 2008;16:16064–78.
- Cerussi AE, Shah N, Hsiang D, Durkin A, Butler J, Tromberg BJ. In vivo absorption, scattering, and physiologic properties of 58 malignant breast tumors determined by broadband diffuse optical spectroscopy. *J Biomed Opt*. 2006;11:044005.
- Choe R, Konecky SD, Corlu A, Lee K, Durduran T, Busch DR, et al. Differentiation of benign and malignant breast tumors by in-vivo three-dimensional parallel-plate diffuse optical tomography. *J Biomed Opt*. 2009;14:024020.
- Chung SH, Cerussi AE, Klifa C, Baek HM, Birgul O, Gulsen G, et al. In vivo water state measurements in breast cancer using broadband diffuse optical spectroscopy. *Phys Med Biol*. 2008;53:6713–27.
- Pogue BW, Jiang S, Dehghani H, Kogel C, Soho S, Srinivasan S, et al. Characterization of hemoglobin, water, and NIR scattering in breast tissue: Analysis of intersubject variability and menstrual cycle changes. *J Biomed Opt*. 2004;9:541–52.
- Cerussi A, Hsiang D, Shah N, Mehta R, Durkin A, Butler J, et al. Predicting response to breast cancer neoadjuvant chemotherapy using diffuse optical spectroscopy. *Proc Natl Acad Sci USA*. 2007;104:4014–9.
- Chung SH, Cerussi A, Mehta R, Hsiang D, Tromberg B. Non-invasive detection and monitoring of tumor pathological grade during neoadjuvant chemotherapy by measuring tissue water state using diffuse optical spectroscopic imaging. *Cancer Res*. 2009;69:1015.
- Soliman H, Gunasekara A, Rycroft M, Zubovits J, Dent R, Spayne J, et al. Functional imaging using diffuse optical spectroscopy of neoadjuvant chemotherapy response in women with locally advanced breast cancer. *Clin Cancer Res*. 2010;16:2605–14.
- Tromberg BJ, Cerussi AE. Imaging Breast Cancer Chemotherapy Responses with Light, Commentary on Soliman et al., p. 2605. *Clin Cancer Res*. 2010;16:2486–8.
- Zhou C, Choe R, Shah N, Durduran T, Yu G, Durkin A, et al. Diffuse optical monitoring of blood flow and oxygenation in human breast cancer during early stages of neoadjuvant chemotherapy. *J Biomed Opt*. 2007;12:051903.
- Zhu Q, Tannenbaum S, Hegde P, Kane M, Xu C, Kurtzman S. Noninvasive monitoring of breast cancer during neoadjuvant chemotherapy using optical tomography with ultrasound localization. *Neoplasia*. 2008;10:1028–40.
- Tromberg BJ, Cerussi AE, Chung SH, Tanamai W, Durkin A. Broadband Diffuse Optical Spectroscopic Imaging. In: Boas DA, Pitrís C, Ramanujam N,

- editors. *Handbook of Biomedical Optics*. Florida, USA: CRC Press, Boca Raton; 2011. p. 181–94.
16. Choe R, Putt ME, Carlile PM, Durduran T, Giammarco JM, Busch DR, et al. Optically measured microvascular blood flow contrast of malignant breast tumors. *Plos One*. 2014;9.
 17. Chung SH, Cerussi AE, Hsiang D, Tromberg BJ. Non-invasive measurement of pathological heterogeneity of cancer tissues using water state information from diffuse Optical Spectroscopic Imaging. *Cancer Res*. 2009;69:7675.
 18. Chung SH, Cerussi AE, Merritt SI, Ruth J, Tromberg BJ. Non-invasive tissue temperature measurements based on quantitative diffuse optical spectroscopy (DOS) of water. *Phys Med Biol*. 2010;55:3753–65.
 19. Chung SH, Mehta R, Tromberg BJ, Yodh AG. Non-invasive measurement of deep tissue temperature changes caused by apoptosis during breast cancer neoadjuvant therapy: a case study. *J Innov Opt Health Sci*. 2011;4:361–72.
 20. Taroni P, Pifferi A, Salvagnini E, Spinelli L, Torricelli A, Cubeddu R. Seven-wavelength time-resolved optical mammography extending beyond 1000 nm for breast collagen quantification. *Opt Express*. 2009;17:15932–46.
 21. Taroni P, Comelli D, Pifferi A, Torricelli A, Cubeddu R. Absorption of collagen: effects on the estimate of breast composition and related diagnostic implications. *J Biomed Opt*. 2007;12:014021.
 22. Kukreti S, Cerussi AE, Tanamai W, Hsiang D, Tromberg BJ, Gratton E. Characterization of metabolic differences between benign and malignant tumors: high-spectral-resolution diffuse optical spectroscopy. *Radiology*. 2010;254:277–84.
 23. Ntzachristos V, Yodh AG, Schnall MD, Chance B. MRI-guided diffuse optical spectroscopy of malignant and benign breast lesions. *Neoplasia*. 2002;4:347–54.
 24. Zhu Q, Cronin EB, Currier AA, Vine HS, Huang MM, Chen NG, et al. Benign versus malignant breast masses: Optical differentiation with US-guided optical imaging reconstruction. *Radiology*. 2005;237:57–66.
 25. Choe R, Corlu A, Lee K, Durduran T, Konecky SD, Grosicka-Koptyra M, et al. Diffuse optical tomography of breast cancer during neoadjuvant chemotherapy: A case study with comparison to MRI. *Med Phys*. 2005;32:1128–39.
 26. Busch DR, Choe R, Rosen MA, Guo WS, Durduran T, Feldman MD, et al. Optical malignancy parameters for monitoring progression of breast cancer neoadjuvant chemotherapy. *Biomed Opt Express*. 2013;4:105–21.
 27. Jiang SD, Pogue BW, Carpenter CM, Poplack SP, Wells WA, Kogel CA, et al. Evaluation of breast tumor response to neoadjuvant chemotherapy with tomographic diffuse optical spectroscopy: case studies of tumor region-of-interest changes. *Radiology*. 2009;252:551–60.
 28. Roblyer D, Ueda S, Cerussi A, Tanamai W, Durkin A, Mehta R, et al. Optical imaging of breast cancer oxyhemoglobin flare correlates with neoadjuvant chemotherapy response one day after starting treatment. *PNAS*. 2011;108:14626–31.
 29. Schaafsma BE, van de Giessen M, Charehbili A, Smit VTHBM, Kroep JR, Lelieveldt BPF, et al. Optical mammography using diffuse optical spectroscopy for monitoring tumor response to neoadjuvant chemotherapy in women with locally advanced breast cancer. *Clin Cancer Res*. 2015;21:577–84.
 30. Ueda S, Roblyer D, Cerussi A, Durkin A, Leproux A, Santoro Y, et al. Baseline tumor oxygen saturation correlates with a pathologic complete response in breast cancer patients undergoing neoadjuvant chemotherapy. *Cancer Res*. 2012;72:4318–28.
 31. Faneyte IF, Schrama JG, Peterse JL, Remijnse PL, Rodenhuis S, van der Vijver MJ. Breast cancer response to neoadjuvant chemotherapy: predictive markers and relation with outcome. *Br J Cancer*. 2003;88:406–12.
 32. Urruticochea A, Smith IE, Dowsett M. Proliferation marker Ki-67 in early breast cancer. *J Clin Oncol*. 2005;23:7212–20.
 33. Heimann R, Ferguson D, Powers C, Recant WM, Weichselbaum RR, Hellman S. Angiogenesis as a predictor of long-term survival for patients with node-negative breast cancer. *J Natl Canc Inst*. 1996;88:1764–9.
 34. Hajjhashemi MR, Grobmyer SR, Al-Quran SZ, Jiang HB. Noninvasive Evaluation of Nuclear Morphometry in Breast Lesions Using Multispectral Diffuse Optical Tomography. *Plos One*. 2012;7:e45714.
 35. Li CQ, Grobmyer SR, Massol N, Liang XP, Zhang QZ, Chen L, et al. Noninvasive in vivo tomographic optical imaging of cellular morphology in the breast: Possible convergence of microscopic pathology and macroscopic radiology. *Med Phys*. 2008;35:2493–501.
 36. Mourant JR, Johnson TM, Carpenter S, Guerra A, Aida T, Freyer JP. Polarized angular dependent spectroscopy of epithelial cells and epithelial cell nuclei to determine the size scale of scattering structures. *J Biomed Opt*. 2002;7:378–87.
 37. Pakalnis MG, Wells WA, Schwab MC, Froehlich HM, Jiang SD, Li ZZ, et al. Tumor angiogenesis change estimated by using diffuse optical spectroscopic tomography: demonstrated correlation in women undergoing neoadjuvant chemotherapy for invasive breast cancer? *Radiology*. 2011;259:365–74.
 38. Srinivasan S, Pogue BW, Brooksby B, Jiang S, Dehghani H, Kogel C, et al. Near-infrared characterization of breast tumors in vivo using spectrally-constrained reconstruction. *Technol Cancer Res Treat*. 2005;4:513–26.
 39. Zhu QN, Kurtzman SH, Hegde P, Tannenbaum S, Kane M, Huang MM, et al. Utilizing optical tomography with ultrasound localization to image heterogeneous hemoglobin distribution in large breast cancers. *Neoplasia*. 2005;7:263–70.
 40. Buck A, Schirrmeyer H, Kuhn T, Shen CX, Kalker T, Kotzerke J, et al. FDG uptake in breast cancer: correlation with biological and clinical prognostic parameters. *Eur J Nucl Med Mol Imaging*. 2002;29:1317–23.
 41. Cochet A, Pigeonnat S, Khoury B, Vrigneaud JM, Touzery C, Berriolo-Riedinger A, et al. Evaluation of breast tumor blood flow with dynamic first-pass F-18-FDG PET/CT: comparison with angiogenesis markers and prognostic factors. *J Nucl Med*. 2012;53:512–20.
 42. Tchou J, Sonnad SS, Bergey MR, Basu S, Tomaszewski J, Alavi A, et al. Degree of tumor FDG uptake correlates with proliferation index in triple negative breast cancer. *Mol Imaging Biol*. 2010;12:657–62.
 43. Cheng JY, Lei L, Xu JY, Sun YF, Zhang YP, Wang XC, et al. F-18-Fluoromisonidazole PET/CT: A potential tool for predicting primary endocrine therapy resistance in breast cancer. *J Nucl Med*. 2013;54:333–40.
 44. Warburg O, Posener K, Negelein E. Ueber den Stoffwechsel der Tumoren. *Biochem Z*. 1924;152:319–44. German.
 45. Culver JP, Durduran T, Furuya T, Cheung C, Greenberg JH, Yodh AG. Diffuse optical tomography of cerebral blood flow, oxygenation, and metabolism in rat during focal ischemia. *J Cereb Blood Flow Metab*. 2003;23:911–24.
 46. Boas DA, Strangman G, Culver JP, Hoge RD, Jaszczewski G, Poldrack RA, et al. Can the cerebral metabolic rate of oxygen be estimated with near-infrared spectroscopy? *Phys Med Biol*. 2003;48:2405–18.
 47. Durduran T, Yu GQ, Burnett MG, Detre JA, Greenberg JH, Wang JJ, et al. Diffuse optical measurement of blood flow, blood oxygenation, and metabolism in a human brain during sensorimotor cortex activation. *Opt Lett*. 2004;29:1766–8.
 48. Roche-Labarbe N, Surova A, Carp S, Patel M, Boas DA, Grant PE, et al. Non-invasive optical measures of Cbv, Sto2, Cbf Index, and Rcmro2 in premature brains during the first 6 weeks of life. *Acta Paediatr*. 2009;98:48.
 49. Kastrop A, Kruger G, Neumann-Haefelin T, Glover GH, Moseley ME. Changes of cerebral blood flow, oxygenation, and oxidative metabolism during graded motor activation. *Neuroimage*. 2002;15:74–82.
 50. Denkert C, Loibl S, Muller BM, Eidtmann H, Schmitt WD, Eiermann W, et al. Ki67 levels as predictive and prognostic parameters in pretherapeutic breast cancer core biopsies: a translational investigation in the neoadjuvant GeparTrio trial. *Ann Oncol*. 2013;24:2786–93.
 51. Goldhirsch A, Ingle JN, Gelber RD, Coates AS, Thurlimann B, Senn H-J, et al. Thresholds for therapies: highlights of the St Gallen International Expert Consensus on the Primary Therapy of Early Breast Cancer 2009. *Ann Oncol*. 2009;20:1319–29.
 52. Goldhirsch A, Wood WC, Coates AS, Gelber RD, Thurlimann B, Senn H-J, et al. Strategies for subtypes-dealing with the diversity of breast cancer: highlights of the St Gallen International Expert Consensus on the Primary Therapy of Early Breast Cancer 2011. *Ann Oncol*. 2011;22:1736–47.
 53. Guarneri V, Piacentini F, Ficarra G, Frassoldati A, D'Amico R, Giovannelli S, et al. A prognostic model based on nodal status and Ki-67 predicts the risk of recurrence and death in breast cancer patients with residual disease after preoperative chemotherapy. *Ann Oncol*. 2009;20:1193–8.
 54. Scholzen T, Gerdes J. The Ki-67 protein: From the known and the unknown. *J Cell Physiol*. 2000;182:311–22.
 55. Clahsen PC, van de Velde CJH, Duval C, Pallud C, Mandard AM, Delobelle-Deroide A, et al. The utility of mitotic index, oestrogen receptor and Ki-67 measurements in the creation of novel prognostic indices for node-negative breast cancer. *Eur J Surg Oncol*. 1999;25:356–63.
 56. Molino A, Micciolo R, Turazza M, Bonetti F, Piubello Q, Bonetti A, et al. Ki-67 immunostaining in 322 primary breast cancers: Associations with clinical and pathological variables and prognosis. *Int J Cancer*. 1997;74:433–7.

57. Chang J, Ormerod M, Powles TJ, Allred DC, Ashley SE, Dowsett M. Apoptosis and proliferation as predictors of chemotherapy response in patients with breast carcinoma. *Cancer*. 2000;89:2145–52.
58. Petit T, Wilt M, Velten M, Millon R, Rodier JF, Borel C, et al. Comparative value of tumour grade, hormonal receptors, Ki-67, HER-2 and topoisomerase II alpha status as predictive markers in breast cancer patients treated with neoadjuvant anthracycline-based chemotherapy. *Eur J Cancer*. 2004;40:205–11.
59. Mohammed ZMA, McMillan DC, Elsberger B, Going JJ, Orange C, Mallon E, et al. Comparison of Visual and automated assessment of Ki-67 proliferative activity and their impact on outcome in primary operable invasive ductal breast cancer. *Br J Cancer*. 2012;106:383–8.
60. Konsti J, Lundin M, Joensuu H, Lehtimäki T, Sihito H, Holli K, et al. Development and evaluation of a virtual microscopy application for automated assessment of Ki-67 expression in breast cancer. *BMC Clin Pathol*. 2011;11:1–11.
61. Inwald EC, Klinkhammer-Schalke M, Hofstadter F, Zeman F, Koller M, Gerstenhauer M, et al. Ki-67 is a prognostic parameter in breast cancer patients: results of a large population-based cohort of a cancer registry. *Breast Cancer Res Treat*. 2013;139:539–52.
62. Harper-Wynne C, Ross G, Sacks N, Salter J, Nasiri N, Iqbal J, et al. Effects of the aromatase inhibitor letrozole on normal breast epithelial cell proliferation and metabolic indices in postmenopausal women: a pilot study for breast cancer prevention. *Cancer Epidemiol Biomarkers Prev*. 2002;11:614–21.
63. Carke R, Howell A, Potten C, Anderson E. Dissociation between steroid receptor expression and cell proliferation in the human breast. *Cancer Res*. 1997;57:4987–91.
64. de Lima G, Facina G, Shida J, Chein M, Tanaka P, Dardes R, et al. Effects of low dose tamoxifen on normal breast tissue from premenopausal women. *Eur J Cancer*. 2003;39:891–8.
65. Burcombe R, Wilson GD, Dowsett M, Khan I, Richman PI, Daley F, et al. Evaluation of Ki-67 proliferation and apoptotic index before, during and after neoadjuvant chemotherapy for primary breast cancer. *Breast Canc Res*. 2006;8:R31.
66. Lipponen P. Apoptosis in breast cancer: relationship with other pathological parameters. *Endocr-Relat Cancer*. 1999;6:13–6.
67. Heiden MG, Cantley LC, Thompson CB. Understanding the Warburg effect: the metabolic requirements of cell proliferation. *Science*. 2009;324:1029–33.
68. Lopez-Lazaro M. The Warburg effect: why and how do cancer cells activate glycolysis in the presence of oxygen? *Anticancer Agents Med Chem*. 2008;8:305–12.
69. Dang CV. Rethinking the Warburg Effect with Myc micromanaging glutamine metabolism. *Cancer Res*. 2010;70:859–62.
70. Khan QJ, Kimler BF, O'Dea AP, Zalles CM, Sharma P, Fabian CJ. Mammographic density does not correlate with Ki-67 expression or cytomorphology in benign breast cells obtained by random periareolar fine needle aspiration from women at high risk for breast cancer. *Breast Canc Res*. 2007;9:R35.
71. Fina L, Molgaard HV, Robertson D, Bradley NJ, Monaghan P, Delia D, et al. Expression of the Cd34 Gene in Vascular Endothelial-Cells. *Blood*. 1990;75:2417–26.
72. Martin L, Green B, Renshaw C, Lowe D, Rudland P, Leinster SJ, et al. Examining the technique of angiogenesis assessment in invasive breast cancer. *Br J Cancer*. 1997;76:1046–54.
73. Carmeliet P, Jain RK. Angiogenesis in cancer and other diseases. *Nature*. 2000;407:249–57.

Submit your next manuscript to BioMed Central and take full advantage of:

- Convenient online submission
- Thorough peer review
- No space constraints or color figure charges
- Immediate publication on acceptance
- Inclusion in PubMed, CAS, Scopus and Google Scholar
- Research which is freely available for redistribution

Submit your manuscript at
www.biomedcentral.com/submit

