

## Erratum

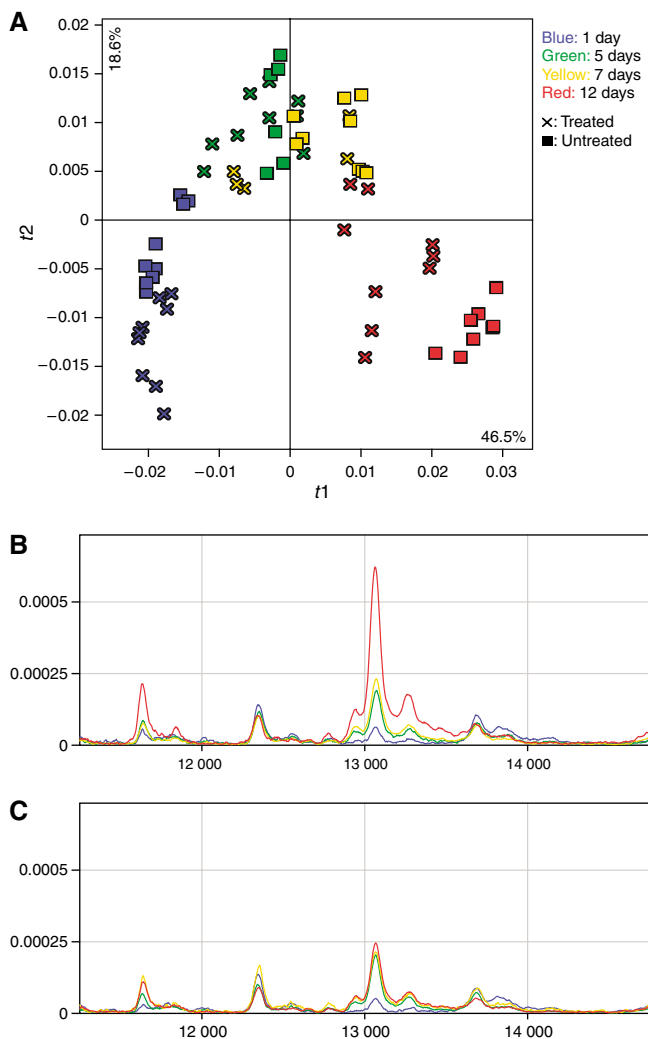
# Protein expression in experimental malignant glioma varies over time and is altered by radiotherapy treatment

C Wibom, F Pettersson, M Sjostrom, R Henriksson, M Johansson and AT Bergenheim

British Journal of Cancer (2006) 95, 766. doi:10.1038/sj.bjc.6603269 www.bjancer.com  
© 2006 Cancer Research UK

**Correction to:** *British Journal of Cancer* (2006) 94, 1853–1863.  
doi:10.1038/6603190

Owing to a publishing error, Figure 3 (parts A and B) in the above paper were reproduced incorrectly. The correct complete Figure 3 is shown below.



**Figure 3** Principal component analysis reveals a time trend in protein expression during tumour progression (**A**).  $R^2X(\text{cum})=0.65$  for the first two components. 'x' and '■' represent treated and untreated samples, respectively, and the different colours represent samples collected at different time points after treatment, as follows: blue = 1 day; green = 5 days; yellow = 7 days; red = 12 days. (**B**) and (**C**) display mean protein profiles within a specific spectral region, derived from untreated and treated samples, respectively. The samples are from the same time points as above and the same colour coding is applied.