

Does standardized BMD still remove differences between Hologic and GE-Lunar state-of-the-art DXA systems?

B. Fan · Y. Lu · H. Genant · T. Fuerst · J. Shepherd

Received: 10 June 2009 / Accepted: 10 August 2009 / Published online: 27 October 2009
© The Author(s) 2009. This article is published with open access at Springerlink.com

Abstract

Summary The standardized bone mineral density (sBMD) values, derived using universal standardized equations, were shown to be equivalent within 1.0% for hip but significantly different for spine for state-of-art fan-beam dual X-ray absorptiometry (DXA) Hologic and GE-Lunar systems. Spine L1-L4 and L2-L4 sBMD mean differences between the two systems were 0.042 g/cm² (4.1%) and 0.035 g/cm² (3.2%), respectively.

Introduction The objective of this study is to validate the 1994 pencil-beam DXA “universal standardization equations” for state-of-the-art fan-beam DXA systems.

Methods The spine and bilateral femurs of 87 postmenopausal women were scanned on both Hologic Delphi and

GE-Lunar Prodigy DXA systems at three different clinical centers. The scans were analyzed using Hologic Apex and GE-Lunar EnCore software. The BMD results were converted to sBMD using the equations previously developed. Linear regression analysis was used to describe the relationship of the two systems’ BMD results. Bland–Altman analysis was used to assess the differences in measures.

Results The Apex and Prodigy sBMD values were highly correlated (r ranged from 0.92 to 0.98). Spine L1-L4 and L2-L4 sBMD values had significant intercepts and slopes for Bland–Altman regression, with mean differences of 0.042 g/cm² (4.1%) and 0.035 g/cm² (3.2%), respectively. The total hip and neck sBMD showed no significant intercept and slope, except left total sBMD had a significant difference between the two systems of 0.009 g/cm² (1.0%).

Conclusions The sBMD values were shown to be equivalent within 1.0% for hip but were significantly different for spine on the two systems. Biases may persist in pooled sBMD data from different manufacturers, and further study is necessary to determine the cause.

B. Fan · Y. Lu · H. Genant · J. Shepherd
Department of Radiology and Biomedical Imaging,
University of California San Francisco,
San Francisco, CA, USA

Y. Lu
e-mail: ying.lu@radiology.ucsf.edu

H. Genant
e-mail: harry.genant@ucsf.edu

J. Shepherd
e-mail: john.shepherd@radiology.ucsf.edu

H. Genant · T. Fuerst
Synarc, Inc,
San Francisco, CA, USA

T. Fuerst
e-mail: thomas.fuerst@synarc.com

B. Fan (✉)
Department of Radiology, University of California San Francisco,
1635 Divisadero Street, Suite 525,
San Francisco, CA 94115, USA
e-mail: bo.fan@radiology.ucsf.edu

Keywords Bone densitometry · Standardization equation · Standardized BMD

Introduction

Dual X-ray absorptiometry (DXA) is currently a principal method to measure bone mineral density (BMD) both in clinical practice and drug trials. The three dominant DXA manufacturers are Hologic Inc. (Bedford, MA, USA), GE-Lunar Inc. (Madison, WI, USA), and Cooper Surgical (Norland; Trumbull, CT, USA). Although the DXA technology is similar for these manufacturers, the BMD results are different due to different calibration standards,

proprietary algorithms to calculate the BMD, and differences in the regions of interest (ROI). As a result, a patient scanned on three different DXA systems will have substantially different BMD values. As an example, Hologic spine BMD is typically 11.7% lower than GE-Lunar BMD and 0.6% higher than Norland BMD. These differences complicate the pooling of BMD values from different systems in multi-center clinical trials and make it difficult to compare BMD measures over time when a patient is scanned on different systems.

To solve this comparability problem, the International Committee for Standards in Bone Measurements (ICSBM) conducted a study in 1994 in which 100 women were scanned on all three of these DXA systems. The study was performed at the University of California at San Francisco (UCSF) using pencil-beam DXA systems made by all three of the dominant manufacturers at that time: Hologic QDR 2000 in pencil-beam mode, Lunar DPX-L, and Norland XR26 Mark II. Subsequently, the ICSBM published universal BMD standardization equations to convert spine and hip BMD results from different systems into a standardized BMD (sBMD) [1, 2], so that sBMD derived from the three systems would be approximately the same for any given patient. To overcome residual bias present in the published ICSBM conversions, Hui et al. published optimized equations for spinal sBMD [3]. In 2001, Lu et al. published femur subregional conversion equations to cross-calibrate between different manufactures [4]. These updated formulas are frequently used in large multi-center clinical trials and epidemiological studies.

Advances in DXA technology have resulted in the development of a new generation of densitometer in which the pencil-beam X-ray source and the single detector of the pencil-beam instruments were replaced by a fan-beam X-ray source and a multiple-element detector array. Whereas pencil-beam scans report accurate bone area and dimensions, the measure of bone area (AREA) and bone mineral content (BMC) for fan-beam scans may have a magnification error relative to the height of the bone above the scanning table (i.e., the higher the bone off the table, the smaller the projected bone area since the X-ray source is in the table) [5]. Hologic systems employ a single-pass wide-angle fan beam, while GE-Lunar systems use a multi-pass narrow-angle fan beam with some overlap between passes. The current DXA software is highly automated for the placement of ROI, while the older software versions were completely manual. These software changes include adjustments to the absolute BMD values as well. The traditional recommendation regarding patient positioning for spine scans involved elevating the legs with a positioning block for pencil-beam systems. Currently, the Hologic fan-beam systems still use the positioning block while GE-Lunar offers the option (Onescan™) of not elevating the legs, slightly altering the projection of the spine in the image.

The peak X-ray tube voltages used to generate the dual-energy images for the Hologic systems are different between their current fan-beam systems and previous pencil-beam models (140 and 100 kVp versus 140/70 kVp, previously). Throughout all of the changes over the years, the DXA manufactures have worked to keep the calibration of new models consistent with their original models. Lastly, the sBMD equations for the spine were derived using L2-L4, while L1-L4 is the current clinically recommended measurement. Nevertheless, as older systems are replaced with newer models, comparability of measurements made using different systems with their associated proprietary software and different modes of operation become important issues in research studies as well as clinical practice. The objective of this study was to determine whether the standardization formulas derived from pencil-beam DXA scanners are still appropriate for modern DXA systems.

Materials and methods

Study population

The three facilities involved in this study were New Mexico Clinical Research & Osteoporosis Center, Albuquerque, NM, USA [1]; Colorado Center for Bone Research, Lakewood, CO, USA [2]; and UCSF, San Francisco, CA, USA [3]. Each study facility recruited 30 postmenopausal women, ages 52 to 85 years (mean age 63.3±9.2), for a total of 90 participants. Three participants' scans were lost due to corrupted scan files. A total of 87 women's scan results were included in this report. The local human research committee for each facility approved the study, and participants signed an approved informed consent prior to participating. There were no participant restrictions for ethnicity or body mass.

Bone densitometry

All women were scanned twice on both Hologic Delphi (Hologic, Inc., Waltham, MA, USA) and GE-Lunar Prodigy (Madison, WI, USA) DXA systems using each manufacturer's standard scan and positioning protocols. Spine phantom quality control scans were acquired on each of the six systems on a continual basis during the study, but no cross-calibration was performed for any of the systems. Each patient was positioned for the lumbar spine scan and then the left and right proximal femur scans. The subjects were asked to stand between each scan and then repositioned. The 30-s scan mode was used on both systems and for all positions. The legs were elevated using the Hologic positioning cushion for spine scans on the Hologic systems;

legs were flat on the table for the femur scans. The Onescan™ method was used to scan the participants on the GE-Lunar system, except one study facility (UCSF), where the single femur mode was used to scan each hip separately. The positioning and scan modes were picked to mimic current clinical practice and manufacturer recommendations.

Scan analysis

Using the methods recommended by each manufacturer for the ROI placement, one technologist analyzed all the images using either Hologic Apex 3.0 (prerelease) or GE-Lunar EnCore 10.10.

The “compare” (Apex) or “copy” (Prodigy) methods were used to analyze the repeat measurements, thereby facilitating consistent size and placement of analysis regions for each participant. The test–retest precision of the scans was previously reported [6]. In short, the pooled precision from duplicate scans on this population for Apex and Prodigy was statistically the same for L1-L4 (1%) and total hip (1.1%), and different for the femur neck (2.3% versus 1.8%, respectively ($p=0.03$)).

Data conversion and statistical analysis

Demographics and other characteristics of the study population were expressed as means and standard deviation. The relationship between Apex and Prodigy software was defined using linear regression. The BMD values from both systems were converted into sBMD using the Hui et al. formulas for spinal BMD [3]:

$$\begin{aligned} \text{sBMD}_{\text{spine}} &= 1.0550 \times (\text{SPTOTBMD}_{\text{Hologic}} - 0.972) + 1.0436 \\ \text{sBMD}_{\text{spine}} &= 0.9683 \times (\text{SPTOTBMD}_{\text{Lunar}} - 1.100) + 1.0436 \end{aligned}$$

and the Lu et al. formulas for femur BMD [4]:

$$\begin{aligned} \text{sBMD}_{\text{Total hip}} &= (1.008 \times \text{HTOTBMD}_{\text{Hologic}} + 0.006) \\ \text{sBMD}_{\text{Total hip}} &= (0.979 \times \text{HTOTBMD}_{\text{Lunar}} - 0.031) \\ \text{sBMD}_{\text{Neck}} &= (1.087 \times \text{NeckBMD}_{\text{Hologic}} + 0.019) \\ \text{sBMD}_{\text{Neck}} &= (0.939 \times \text{NeckBMD}_{\text{Lunar}} - 0.023) \end{aligned}$$

Although it is customary to represent sBMD in mg/cm², we used g/cm² throughout this paper for both BMD and sBMD values, to compare the magnitude of absolute differences before and after applying the standardization equations.

Bland–Altman statistics [7] were used to test the agreement between the sBMD of the Apex and Prodigy. All the statistics were done using SAS software version 9.1. All the statistical tests were two-sided, and two BMD measures were considered significantly different when at least one p value of intercept or slope is 0.05 or less. The Deming regression method was used to derive cross-calibration equations mimicking the approach used by Hui

et al. [3] and Lu et al. [4] to take into account that both variables have measurement uncertainties.

Since standardization equations are not available for BMC and AREA, and since it was desired to investigate the possible cause in disagreement of the sBMD values, the original Genant equations [8] were used to compare the Prodigy BMC and AREA to Hologic. The Genant equations for spine are

$$\begin{aligned} \text{Hol_AREA}_{\text{Genant}} &= (0.873 \times \text{Lun_AREA}) + 8.808 \\ \text{Hol_BMD}_{\text{Genant}} &= (0.906 \times \text{Lun_BMD}) - 0.025 \end{aligned}$$

BMC was calculated as $\text{BMD}_{\text{Genant}} \times \text{AREA}_{\text{Genant}}$.

Investigations into the hip ROIs in a similar fashion was not possible since the AREA relationships for the proximal femur were not published in any reporting of the standardization study including Genant [8], Lu et al. [4], and Hui et al. [3]. Bland–Altman plots were again used to study the relationship of AREA and BMC.

Results

There were no statistically significant differences among the study facilities for age, height, weight, spinal BMD, and femoral BMDs. For all the study sites, the Prodigy BMD values were, as expected, significantly greater than the Hologic BMD values, as previously reported in Shepherd et al. [9] (see Table 1). The comparison of pooled Apex and Prodigy results is given in Table 2. The Apex and Prodigy BMD results were highly correlated with correlation coefficients (r values) that ranged from 0.91 (left neck) to 0.98 (spine). Before applying the universal standardization equations, all the BMD measures were significantly different between the Apex and Prodigy systems. The mean BMD differences (Apex – Prodigy) were -0.169 ± 0.063 g/cm² (16.5%, $P < 0.0001$) and -0.164 ± 0.048 g/cm² (15.6%, $P < 0.001$) for L1-L4 spine BMD and L2-L4 spine BMD, respectively. The differences for the femur total BMD between the two systems (Apex – Prodigy) were -0.072 ± 0.028 g/cm² (8.2%, $P < 0.001$) for the left femur and -0.068 ± 0.028 g/cm² (7.8%, $P < 0.001$) for the right femur. The differences for the femoral neck BMDs were much greater than for the femur total BMDs -0.164 ± 0.043 g/cm² (21.0%, $P < 0.001$) and -0.156 ± 0.038 g/cm² (20.0%, $P < 0.001$) for left and right, respectively.

After converting the manufacturers' BMD values to sBMD values, percent differences between these two systems were reduced but not eliminated. For spine, the mean BMD differences between Apex and Prodigy were reduced from 16% to 4.1% for L1-L4 sBMD spine and from 15.6% to 3.3% for L2-L4 sBMD spine. The femoral neck sBMD values for Apex and Prodigy were not significantly different. There was 1.0% difference for the left femur total sBMD values, or 0.009 ± 0.027 g/cm²

Table 1 Demographics of the participants

	Mean \pm SD			
	Facility 1	Facility 2	Facility 3	Pooled
<i>N</i>	28	29	30	87
Age (years)	63.4 \pm 9.2	64.1 \pm 9.4	62.3 \pm 9.3	63.0 \pm 9.1
Height (cm)	160.9 \pm 7.2	160.5 \pm 7.5	159.6 \pm 8.3	160.3 \pm 7.5
Weight (kg)	64.0 \pm 10.6	65.0 \pm 16.1	68.0 \pm 18.5	64.0 \pm 15.3
Hologic BMD				
L1-L4 spine	0.930 \pm 0.151	0.938 \pm 0.184	0.952 \pm 0.159	0.941 \pm 0.159
L2-L4 spine	0.946 \pm 0.162	0.989 \pm 0.151	0.970 \pm 0.166	0.970 \pm 0.160
Left total hip	0.819 \pm 0.143	0.856 \pm 0.099	0.845 \pm 0.127	0.841 \pm 0.124
Right total hip	0.815 \pm 0.149	0.854 \pm 0.104	0.839 \pm 0.116	0.837 \pm 0.124
Left neck	0.690 \pm 0.124	0.713 \pm 0.091	0.714 \pm 0.109	0.706 \pm 0.108
Right neck	0.699 \pm 0.132	0.718 \pm 0.081	0.715 \pm 0.109	0.711 \pm 0.108
GE-Lunar BMD				
L1-L4 spine	1.102 \pm 0.181	1.112 \pm 0.171	1.114 \pm 0.189	1.110 \pm 0.180
L2-L4 spine	1.120 \pm 0.192	1.139 \pm 0.180	1.136 \pm 0.198	1.132 \pm 0.190
Left total hip	0.886 \pm 0.153	0.946 \pm 0.108	0.902 \pm 0.125	0.912 \pm 0.131
Right total hip	0.879 \pm 0.159	0.935 \pm 0.110	0.899 \pm 0.116	0.905 \pm 0.132
Left neck	0.847 \pm 0.139	0.900 \pm 0.090	0.861 \pm 0.119	0.870 \pm 0.119
Right neck	0.854 \pm 0.150	0.891 \pm 0.079	0.855 \pm 0.117	0.867 \pm 0.118

No statistically significant differences ($P<0.05$) were found between the sites for the variables we measured

Facility 1: New Mexico Clinical Research & Osteoporosis Center, Facility 2: Colorado Center for Bone Research, Facility 3: University of California at San Francisco
BMD bone mineral density

($P<0.05$), but no differences were found for the right total sBMD values. Significant trends in the sBMD differences in the spine as a function of the magnitude of the BMD ($r=0.31$, $P<0.05$) were found (see Table 3). The difference between the spine sBMD measures increased as the sBMD increased (Fig. 1). In contrast to the spine, the femoral total and neck sBMD did not show significant differences or trends between the differences and means (See Figs. 2, 3, 4, and 5). The cross-calibration equations derived from this study data are shown in Table 4. The cross-calibration equations for L1-L4 and L2-L4 spine BMD had significantly different slopes and intercepts. The total femur and femoral neck BMD cross-calibration equations were also unique. However, the femur equations did not differ significantly between the left and right sides.

To investigate the cause of the differences in the spine, we also compared the L2-L4 BMC and AREA. Figures 6 and 7 show the differences in L2-L4 spine BMC and AREA, respectively. There was a significant slope in L2-L4 AREA but not BMC. Thus, the trend in differences between the L2-L4 sBMD values can be explained by the trend in the differences in spine AREA alone.

Discussion

This study found that marked systematic differences in BMD values at all measurement sites are reduced by using the sBMD equations, but important differences still remain for fan-beam systems in the spine. Furthermore, the

Table 2 Means and standard deviation of Hologic Apex and GE-Lunar Prodigy BMD in g/cm^2

Variables	r^2 value	BMD results			sBMD results		
		Hologic	Prodigy	Difference	Hologic	Prodigy	Difference
L1-L4 spine	0.99	0.941 \pm 0.159	1.110 \pm 0.180	-0.169 \pm 0.063 (16.5%)**	1.011 \pm 0.168	1.053 \pm 0.174	-0.042 \pm 0.060 (4.1%)**
L2-L4 spine	0.98	0.970 \pm 0.160	1.132 \pm 0.190	-0.164 \pm 0.048 (15.6%)**	1.040 \pm 0.170	1.075 \pm 0.184	-0.035 \pm 0.050 (3.3%)**
Left total hip	0.95	0.841 \pm 0.124	0.912 \pm 0.131	-0.072 \pm 0.028 (8.2%)**	0.854 \pm 0.125	0.862 \pm 0.128	-0.009 \pm 0.027 (1.0%)*
Right total hip	0.96	0.837 \pm 0.124	0.905 \pm 0.132	-0.068 \pm 0.028 (7.8%)**	0.850 \pm 0.125	0.855 \pm 0.129	-0.005 \pm 0.027 (0.5%)
Left neck	0.84	0.706 \pm 0.108	0.870 \pm 0.119	-0.164 \pm 0.043 (21.0%)**	0.787 \pm 0.117	0.794 \pm 0.111	-0.007 \pm 0.043 (1.0%)
Right neck	0.87	0.711 \pm 0.108	0.867 \pm 0.118	-0.156 \pm 0.038 (20.0%)**	0.792 \pm 0.118	0.791 \pm 0.111	-0.0006 \pm 0.038 (0.6%)

* $P<0.05$

** $P<0.001$

Table 3 Bland–Altman analysis results

Region of Interest	Before standardization			After standardization		
	Intercept	Slope	SEE	Intercept	Slope	SEE
L1-L4 spine BMD	-0.039	-0.127**	0.06	-0.003	-0.039	0.06
L2-L4 spine BMD	0.019	-0.175**	0.05	0.057	-0.088*	0.05
Left total hip BMD	-0.019	-0.060*	0.03	0.018	-0.031	0.03
Right total hip BMD	-0.007	-0.070*	0.03	0.029	-0.040	0.03
Left neck BMD	-0.086*	-0.099*	0.04	-0.049	0.052	0.04
Right neck BMD	-0.086*	-0.089*	0.04	0.048	0.061	0.04

The difference was defined as (Hologic Apex BMD–GE-Lunar Prodigy BMD)

* $P < 0.05$

** $P < 0.001$

Fig. 1 Bland–Altman plot of lumbar spine L1-L4 (a) and L2-L4 (b) sBMD of Hologic Apex and GE-Lunar Prodigy. The dotted lines are the 95% confidence intervals around the best-fit line

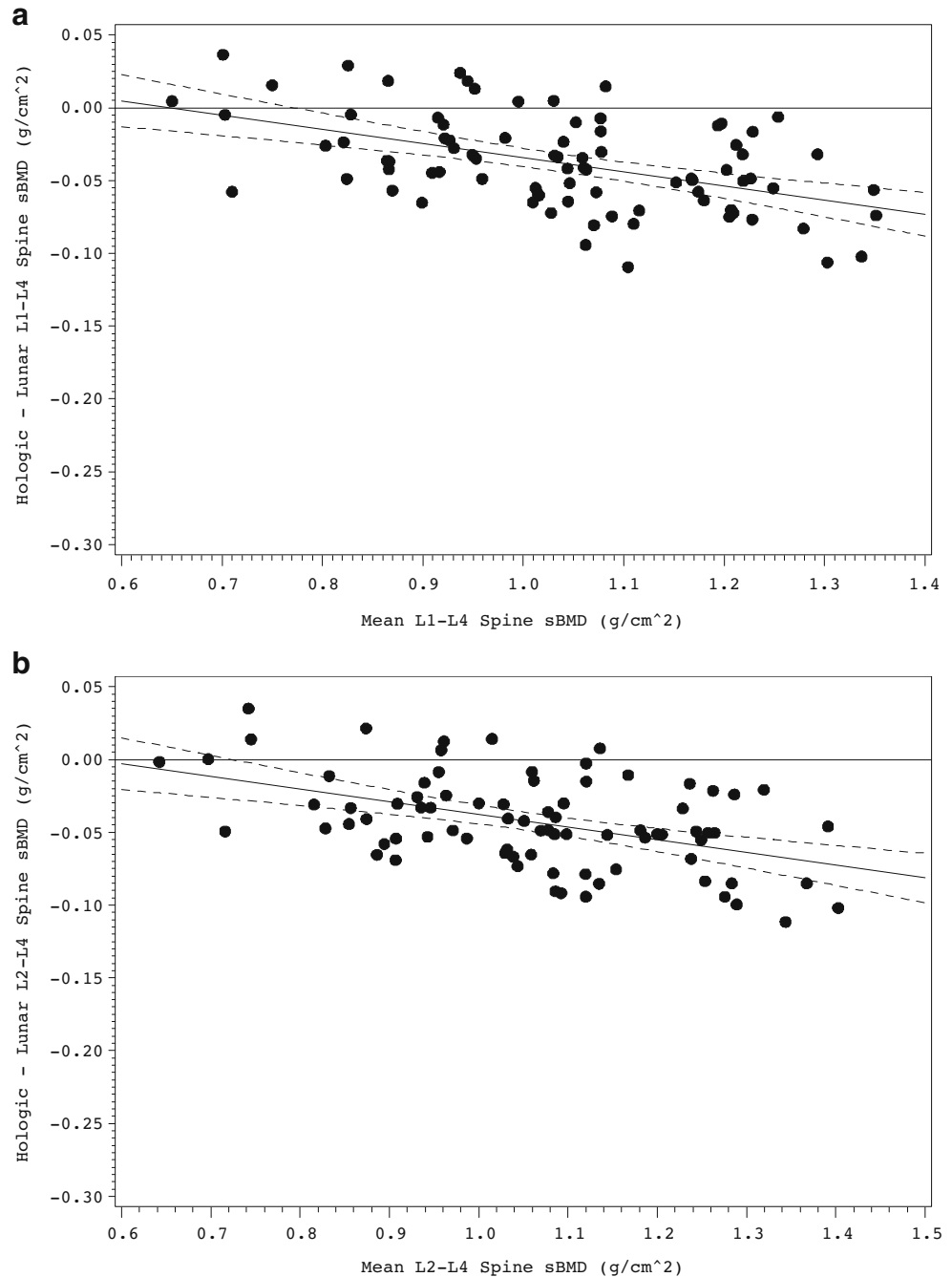
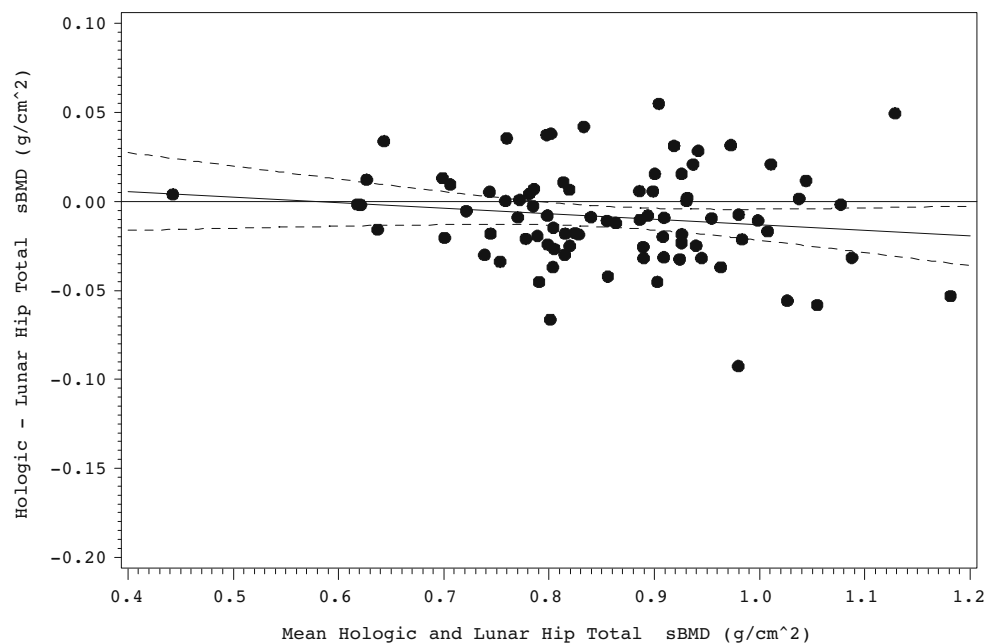


Fig. 2 Bland–Altman plot of left total femur sBMD of Hologic Apex and GE-Lunar Prodigy. The *dotted lines* are the 95% confidence intervals around the best-fit line



relationships relating Apex to Prodigy for L1-L4 and L2-L4 were not interchangeable.

Several studies had previously indicated that there were significant measurement differences between the new and older generation systems. Pearson et al. [10] found similar differences in their cross-calibration study. They found the spine sBMD on the GE-Lunar Prodigy system was significantly higher than when the same subjects were scanned on a Hologic QDR 2000 system in fan-beam mode (the mean difference was 0.035 g/cm²). As in our study, no differences in sBMD were found for the femoral neck and femur total ROIs. Ozdemir and Ucar [11] compared hip and

spine measures on the same patients between the GE-Lunar DPX-NT and Hologic 4500C systems and found that the spine sBMD was significantly different between GE-Lunar DPX-NT and the Hologic 4500C systems (1.017 and 1.022 g/cm², respectively). These observed differences are owed in part to the significant changing results between pencil and fan-beam systems for the same manufacturer [10, 12–15]. The worst reported case, the difference of 17% was observed between pencil-beam QDR 1000W to fan-beam QDR 4500W scanners [12].

There are many identifiable differences between these particular fan and pencil-beam systems: some of which are

Fig. 3 Bland–Altman plot of right total femur sBMD of Hologic Apex and GE-Lunar Prodigy. The *dotted lines* are the 95% confidence intervals around the best-fit line

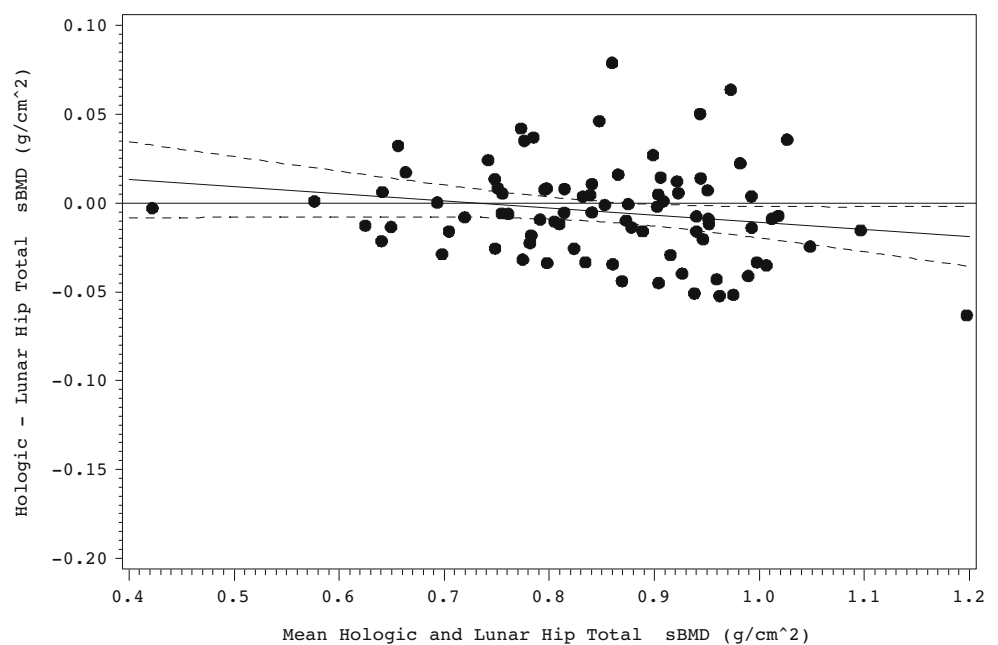
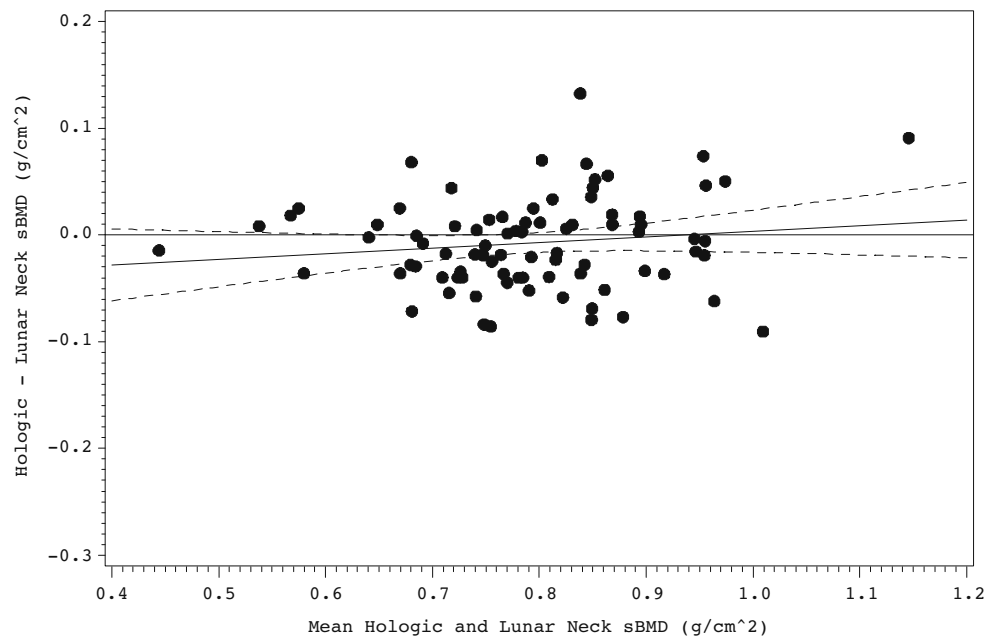


Fig. 4 Bland–Altman plot of left femur neck sBMD of Hologic Apex and GE-Lunar Prodigy. The *dotted lines* are the 95% confidence intervals around the best-fit line



specific to their scan geometries while other long-standing differences having to do with the proprietary way each manufacturer practices the measure of bone density (edge detection algorithms, calibration methods, X-ray tube voltages, “K-edge filtered” versus “voltage switching” X-ray sources). The geometry of the pencil-beam systems was very similar, but the scan geometry used in the fan-beam systems is substantially different. Hologic uses a lateral fan-beam, whereas the Prodigy’s fan beam is oriented to the superior–inferior direction [16]. Due to its scan geometry, the Hologic system makes one pass of the region of interest with a broad fan beam. Thus, the X-rays pass through a part of the body

only once. A consequence of the Hologic geometry is that bone area is magnified based on the distance between the examination table and the spine. In contrast, with its narrow fan beam, Prodigy scanners make multiple passes and over samples some parts of the scan area while not sampling other areas at all depending on where the passes intersect above the tabletop. The Prodigy scanner stitches the passes together in the bone plane to create an undistorted view of the bone. The Prodigy does not exhibit magnification [5]. Another consideration is that the 1994 sBMD study was derived from data collected at one clinic using one system from each manufacturer and could not take into account intra-

Fig. 5 Bland–Altman plot of right femur neck sBMD of Hologic Apex and GE-Lunar Prodigy. The *dotted lines* are the 95% confidence intervals around the best-fit line

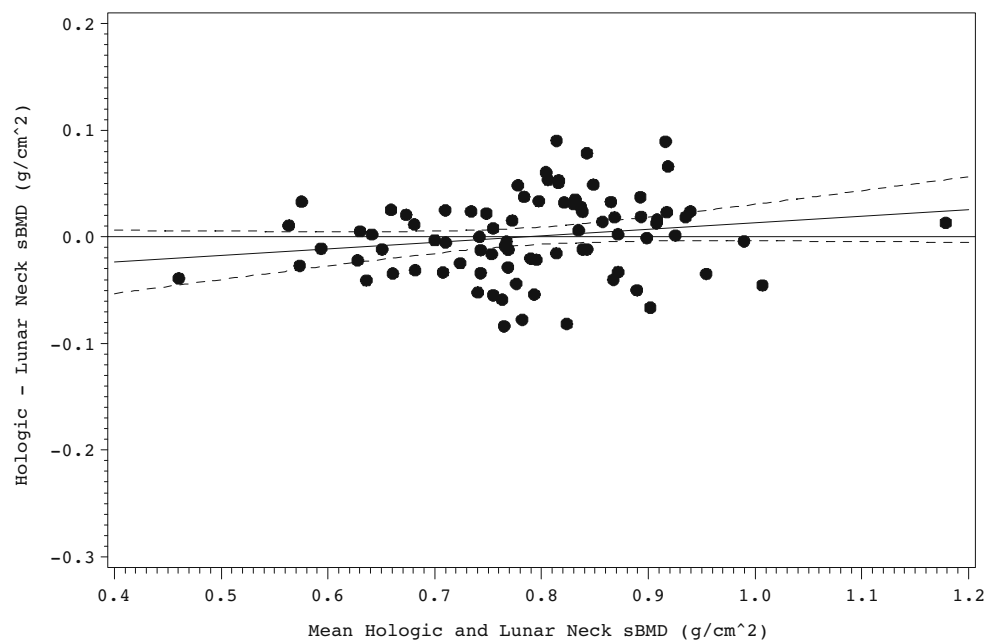


Table 4 Conversion equations for GE-Lunar Prodigy and Hologic Apex systems

Variables	From Hologic to GE-Lunar	From GE-Lunar to Hologic
L1-L4 spine BMD	$GE\text{-Lunar}=1.140\times Hologic+0.037$	$Hologic=0.877\times GE\text{-Lunar}-0.033$
L2-L4 spine BMD	$GE\text{-Lunar}=1.195\times Hologic-0.023$	$Hologic=0.837\times GE\text{-Lunar}+0.021$
Left total hip BMD	$GE\text{-Lunar}=1.063\times Hologic+0.018$	$Hologic=0.941\times GE\text{-Lunar}-0.017$
Right total hip BMD	$GE\text{-Lunar}=1.073\times Hologic+0.087$	$Hologic=0.932\times GE\text{-Lunar}-0.006$
Left neck BMD	$GE\text{-Lunar}=1.108\times Hologic+0.087$	$Hologic=0.902\times GE\text{-Lunar}-0.079$
Right neck BMD	$GE\text{-Lunar}=1.096\times Hologic+0.088$	$Hologic=0.913\times GE\text{-Lunar}-0.080$

Fig. 6 Bland–Altman plot of L2-L4 BMC of Hologic Apex and GE-Lunar Prodigy converted to Hologic Apex BMC. The dotted lines are the 95% confidence intervals around the best-fit line

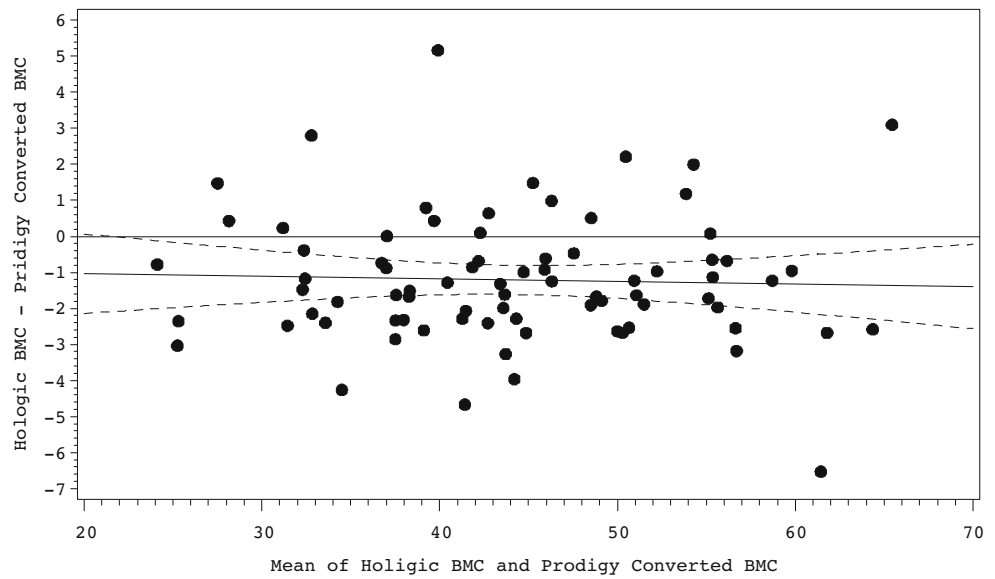
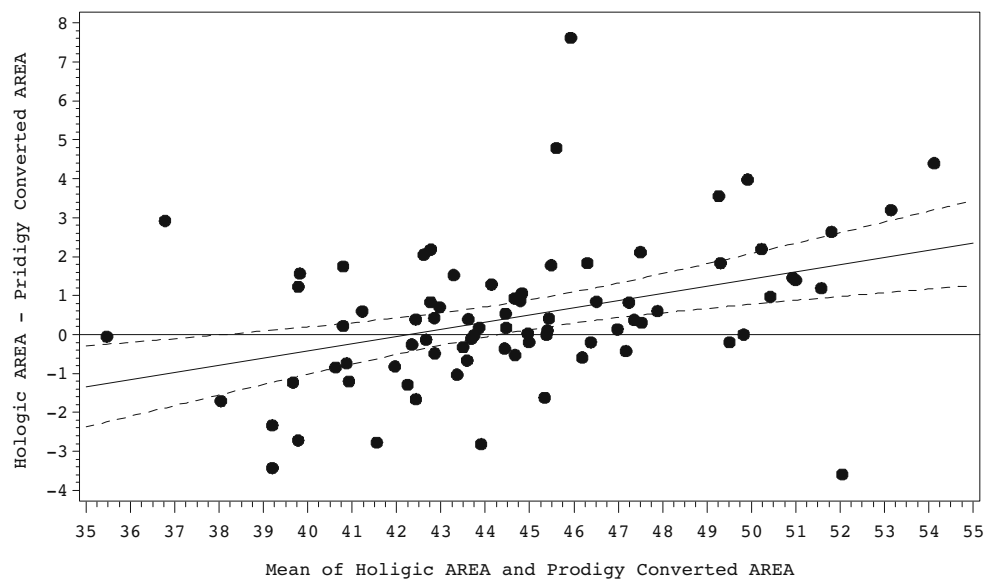


Fig. 7 Bland–Altman plot of L2-L4 AREA of Hologic Apex and GE-Lunar Prodigy converted to Hologic Apex AREA. The dotted lines are the 95% confidence intervals around the best-fit line



manufacturer variation. Our study consisted of three study sites, with three pair of Hologic Delphi and GE-Lunar Prodigy devices, and the inter-site variations were intentionally not cross-calibrated to provide a more robust relationship. This is different than the quality control performed for multi-center clinical trials where the goal is to remove systematic differences between DXA systems by phantom cross-calibration.

The difference in L2-L4 AREA showed a significant trend as function of mean AREA measured. Two possible explanations for this are the more pronounced magnification in the Hologic Delphi fan-beam systems than the GE-Lunar Prodigy and the difference in leg positioning. Boudoueq et al. [5] found in phantom experiments that decreasing height above the table increased AREA for the Hologic Discovery device and not for the Prodigy. Secondly, Hwua et al. found that the GE-Lunar Prodigy BMD results for the legs down position were on average 1.33% higher than when measured with legs up due to a change in the bone projection [17]. However, Nord et al. showed that the GE-Lunar Prodigy spine AREA, BMC, and BMD in leg down position were highly correlated with results from the traditional position [18]. Unfortunately, we were not able to determine which of these effects accounted for the differences found in this study.

This study had several limitations. First, no phantom cross-calibration was performed between study sites. The absolute calibration differences between the systems of the same make was not known during the period of the study. However, the sites were monitored with their local quality control phantoms and found to be stable and calibrated to their factory standards. Clinical systems can vary in their absolute calibration by as much as $\pm 2\%$ [14]. Using another set of systems may generate equations slightly different because of this. However, since there is no gold standard phantom for field calibration of either Hologic or GE-Lunar systems, this limitation is unavoidable. This study was at least an average of three systems from each manufacturer, while the original sBMD study used representatives of convenience from each manufacturer. Second, only two of the three major DXA manufacturers' systems were included in the study. Thus, we could not validate any of the sBMD relationships involving Norland systems. Third, our findings are only strictly applicable when the spine-positioning block is used for the Hologic systems and not used on the GE-Lunar systems. Currently, the GE-Lunar Prodigy can be used with the positioning block or without it using the Onescan™ option. Lastly, our study was not able to determine which of the many differences between the pencil and fan-beam systems was responsible for the differences seen at the spine. The time and reason for the change in inter-manufacturer accuracy is important to determine since studies often involve different models and software versions.

The pencil-beam sBMD equations made comparing BMD measurements for studies using different DXA systems possible. Pencil-beam technology has all but been totally replaced with fan-beam systems due to faster scan times, improved image quality, and greater measurement precision. It is important to note that neither sBMD nor the cross-calibration equations derived in this study solve the problem of comparing the DXA results of a patient done at one clinic on a Hologic scanner to those done at a second clinic on a GE-Lunar scanner. The large SEE of the standardization (or conversion) equations, which in this study was in the range of 4–7%, prevents a precise comparison of the BMD of an individual between scanners from different manufacturers. As previously pointed out by Formica [19] and Ozdemir and Ucar [11], these equations are most useful for pooling data from multi-center trials to remove systematic differences and not for comparing results of individual patients.

In conclusion, this study found that marked systematic differences in BMD values between current generation fan-beam DXA systems are reduced when using the sBMD equations, but residual differences remain especially for the spine ROIs. New relationships were derived from cross-calibration data averaged between three clinical sites that removed the systematic differences at all ROIs. This study emphasizes the need to keep standardization equations up to date with advances in technology and clinical practice to ensure accuracy when pooling results between scanners.

Acknowledgments The authors would like to thank GE-Lunar and Hologic who provided partial funding for this study and Jenny Sherman for her editing of the manuscript. We also acknowledge the contributions of Paul Miller and Mike Lewiecki of the Colorado Center for Bone Research, Lakewood, Colorado, and the New Mexico Clinical Research & Osteoporosis Center, Albuquerque, New Mexico, as clinical data collection sites.

Conflicts of interest The following is our disclosure of financial interests with companies mentioned in this manuscript: Harry K. Genant—GE/Lunar, Hologic—Consultancies; John A. Shepherd—GE/Lunar, Hologic—Consultancies; Thomas Fuerst as “employee and shareholder in Synarc Inc”.

Open Access This article is distributed under the terms of the Creative Commons Attribution Noncommercial License which permits any noncommercial use, distribution, and reproduction in any medium, provided the original author(s) and source are credited.

References

- Genant HK, Grampp S, Gluer CC, Faulkner KG, Jergas M, Engelke K, Hagiwara S, Van Kuijk C (1994) Universal standardization for dual x-ray absorptiometry: patient and phantom cross-calibration results. *J Bone Miner Res* 9:1503–1514

2. International Committee for Standards in Bone Measurement (1997) Standardization of proximal femur bone mineral density (BMD) measurements by DXA. *Bone* 21:369–370
3. Hui SL, Gao S, Zhou XH, Johnston CC Jr, Lu Y, Gluer CC, Grampp S, Genant H (1997) Universal standardization of bone density measurements: a method with optimal properties for calibration among several instruments. *J Bone Miner Res* 12:1463–1470
4. Lu Y, Fuerst T, Hui S, Genant HK (2001) Standardization of bone mineral density at femoral neck, trochanter and Ward's triangle. *Osteoporos Int* 12:438–444
5. Boudousq V, Goulart DM, Dinten JM, de Kerleau CC, Thomas E, Mares O, Kotzki PO (2005) Image resolution and magnification using a cone beam densitometer: optimizing data acquisition for hip morphometric analysis. *Osteoporos Int* 16:813–822
6. Fan B, Lewiecki EM, Sherman M, Lu Y, Miller PD, Genant HK, Shepherd JA (2008) Improved precision with Hologic Apex software. *Osteoporos Int* 19:1597–1602
7. Bland JM, Altman DG (1999) Measuring agreement in method comparison studies. *Stat Methods Med Res* 8:135–160
8. Genant HK (1995) Universal standardization for dual X-ray absorptiometry: patient and phantom cross-calibration results. *J Bone Miner Res* 10:997–998
9. Shepherd JA, Fan B, Lu Y, Lewiecki EM, Miller P, Genant HK (2006) Comparison of BMD precision for Prodigy and Delphi spine and femur scans. *Osteoporos Int* 17:1303–1308
10. Pearson D, Horton B, Green DJ (2006) Cross calibration of DXA as part of an equipment replacement program. *J Clin Densitom* 9:287–294
11. Ozdemir A, Ucar M (2007) Standardization of spine and hip BMD measurements in different DXA devices. *Eur J Radiol* 62:423–426
12. Henzell S, Dhaliwal SS, Price RI, Gill F, Ventouras C, Green C, Da Fonseca F, Holzherr M, Prince R (2003) Comparison of pencil-beam and fan-beam DXA systems. *J Clin Densitom* 6:205–210
13. Ellis KJ, Shypailo RJ (1998) Bone mineral and body composition measurements: cross-calibration of pencil-beam and fan-beam dual-energy X-ray absorptiometers. *J Bone Miner Res* 13:1613–1618
14. Blake GM, Harrison EJ, Adams JE (2004) Dual X-ray absorptiometry: cross-calibration of a new fan-beam system. *Calcif Tissue Int* 75:7–14
15. Ruetsche AG, Lippuner K, Jaeger P, Casez JP (2000) Differences between dual X-ray absorptiometry using pencil beam and fan beam modes and their determinants in vivo and in vitro. *J Clin Densitom* 3:157–166
16. Griffiths MR, Noakes KA, Pocock NA (1997) Correcting the magnification error of fan beam densitometers. *J Bone Miner Res* 12:119–123
17. Hwua Y-S, Huang B-Y, Hua M-Y, Wen H-W (2008) Difference in the spinal bone mineral density measured with and without hip flexion. *J Clin Densitom* 11:453
18. Nord R, Ergun D, Faulkner K (2002) Effect of patient positioning devices on bone density measurements. *J Bone Miner Res* 17:313
19. Formica CA (1998) Standardization of BMD measurements. *Osteoporos Int* 8:1–3