

Clinical Study

Nexplanon Subdermal Implant: Assessment of Sexual Profile, Metabolism, and Bleeding in a Cohort of Italian Women

Maurizio Guida,¹ Manuela Farris ,^{2,3} Carmen Imma Aquino,¹ Elena Rosato,² Lucio M. A. Cipullo ,¹ and Carlo Bastianelli²

¹Department of Obstetrics and Gynecology, School of Medicine, University of Salerno, Salerno, Italy

²Department of Maternal and Child Health and Urology, Sapienza University of Rome, Italy

³AIED, Rome, Italy

Correspondence should be addressed to Manuela Farris; manuela.farris@uniroma1.it

Received 30 July 2018; Revised 28 November 2018; Accepted 9 December 2018; Published 31 January 2019

Academic Editor: Mittal Suneeta

Copyright © 2019 Maurizio Guida et al. This is an open access article distributed under the Creative Commons Attribution License, which permits unrestricted use, distribution, and reproduction in any medium, provided the original work is properly cited.

Objectives. To evaluate the impact on metabolism, bleeding, and sexual function of Nexplanon, a subdermal implant. **Study Design.** We recruited women ($n=101$) receiving the Nexplanon implant at two university centers in Italy between 2011 and 2016 into this prospective, observational, multicenter research trial. Participants completed the Interview for Ratings of Sexual Function (IRSF) and the Female Sexual Function Index (FSFI) questionnaires before and 3 and 6 months after the implant was inserted. In addition, all blood parameters were assessed at these visits. All women were given a menstrual diary card and a pictorial blood assessment chart to record daily any vaginal bleeding. **Results.** The studied metabolic parameters remained in the normal range, showing no alarming modifications: minimal statistical reductions (in aspartate aminotransferase, alanine aminotransferase, total cholesterol, triglycerides, and activated partial thromboplastin time) and increases (in glucose and prothrombin activity) were observed. Changes in IRSF score over 6 months showed a significant increase in pleasure, personal initiative, orgasm, intensity of orgasm, and satisfaction, and a significant decrease in anxiety and discomfort. Mean Body Mass Index decreased, and the weekly frequency of sexual intercourse increased. **Conclusions.** Nexplanon showed not only a lower metabolic and bleeding impact, but also important positive effects on sexual function. It expands the range of possibilities for women, 38 and couples, in the modern concepts of sexual and reproductive wellbeing.

1. Introduction

Nexplanon is a single-rod subdermal contraceptive implant containing a total of 68 mg of etonogestrel (a progestin being the active metabolite of desogestrel derived from the 19- nortestosterone), which is released daily at low doses (25–70 μg) through a rate-limiting membrane, allowing a contraceptive effect lasting up to 3 years [1]. Nexplanon is an advanced version of Implanon, differing from the latter by having an easier insertion technique, using a next-generation applicator (Merck & Co, Whitehouse Station, NJ, USA), and for its detectability on X-ray imaging and computed tomography [2].

Influence of hormonal contraceptives on sexual life is not frequently reported. Data published to date are contrasting

and refer to the combined short-acting hormonal oral [3, 4] and vaginal contraceptives [5, 6], while studies on the influence of subdermal contraception are few, and not specifically focused on female sexual function [7–9].

Long-acting reversible contraceptive (LARC), specifically subdermal contraceptives, has become of increased interest for women of all ages, because they are easy to use and discreet and have a minimum impact on social/family life [10–13]. Nexplanon has the same advantages in terms of compliance that all LARC hold: women no longer need daily reminders to take the “pill” (oral contraceptive) or weekly or monthly replacement of the patch or the vaginal ring, respectively [13].

The aim of our study was to investigate the complete profile of women using Nexplanon, analyzing possible

changes in metabolic parameters, the discomfort from initial spotting/bleeding associated with this contraceptive method, and—for the first time—the quality of sexual life through a visual analog scale (VAS) and the Female Sexual Function Index questionnaire.

2. Materials and Methods

This prospective, observational, multicenter research trial was performed at the Department of Obstetrics and Gynecology, University of Salerno and the former Department of Obstetrical Gynecological Sciences and Urological Sciences, now Department of Maternal and Child Health and Urology, Sapienza University of Rome, Rome (Italy).

Women attending our centers between 2011 and 2016, for regular gynaecologic assessments or with a contraceptive request or for periodic check-ups at our Center for Birth Control, were invited to enrol in the study. During this period, the Interview for Ratings of Sexual Function (IRSF) and the Female Sexual Function Index (FSFI) questionnaires were routinely administered to all women requesting a contraceptive, to obtain a database of all contraceptive methods. In addition, blood parameters were assessed for all women attending the clinics.

Women were included in the study if they had a regular menstrual cycle and body mass index (BMI) of 19.5–26.6 kg/m² and were sexually active. Exclusion criteria were reported venous thromboembolic disorders, known or suspected malignancy, severe liver disease, and undiagnosed vaginal bleeding. Additional exclusion criteria for this analysis were hypersensitivity to the active ingredient or to any other components of Nexplanon, or the use of drugs that could affect its pharmacokinetics.

The study protocol was approved by the Ethical Review Committees of both Universities and was carried out following the principles of the Declaration of Helsinki. Confidentiality of the participants was maintained during data analysis. All participants provided written, informed consent before entry into the study and after the research protocol had been verbally explained to them in detail.

A detailed medical history and a gynaecological examination including vaginal swab and Papanicolaou test were performed at screening, and blood pressure, BMI, and blood parameters (glucose, blood urea nitrogen, creatinine, aspartate aminotransferase [AST], alanine aminotransferase [ALT], cholesterol, triglyceride, antithrombin III, prothrombin time, activated partial thromboplastin time, fibrinogen, and platelets) were assessed for all women.

The Nexplanon subdermal implant was inserted within 5 days of the onset of menstruation by trained physicians.

Sexual profile was assessed using the IRSF, a structured 11-item interview, in which each item presents a VAS of 100 mm (with a range of 0–100) [5] and the FSFI, a multidimensional validated questionnaire for assessing female sexual function [14]. The IRSF and the FSFI were administered to participants before the implant use and 3 and 6 months after its insertion.

To respect privacy and avoid the bias that may result from a face-to-face approach, the questionnaires are designed to be self-administered. Participants completed the questionnaires

by themselves after each part had been explained by a trained physician.

The effects of contraception on sexual profile of participants were calculated as difference in VAS score (Δ VAS) before the implant (VAS0) and after 3 months (VAS3) and 6 months (VAS6) of insertion of the implant. The same was done for blood parameters (Δ MET).

All women were given a menstrual diary card to record daily any vaginal bleeding. Bleeding and spotting days were assessed using the World Health Organization reference period developed by Belsey and Farley [15]. All women were instructed on the correct distinction between bleeding (use of more than one sanitary pad per day) and spotting (only one sanitary pad needed per day). Bleeding was defined as unchanged if the characteristics were identical to those present before implant insertion. The diary cards were evaluated at 3 months and at 6 months. Quantity of menstrual blood flow was assessed through the Menstrual Pictorial Blood Assessment Chart by Higham [16].

Age, BMI, duration of relationship, and weekly frequency of sexual intercourse were reported as mean and standard deviation (SD). The means of BMI and weekly frequency of 1 sexual relation were compared at baseline (T0) and after 6 months of use (T1), using the t-test for paired samples.

The Mann-Whitney test for independent variables was used for statistical evaluation of Δ VAS1 (VAS3–VAS0), Δ VAS2 (VAS6–VAS0), and Δ VAS3 (VAS6–VAS3) and the corresponding differences between the individual metabolic parameters. The method calculates the sum of ranks for each group and compares this with what would be expected by chance. The statistical significance was set at $p < .05$.

3. Results

Of 160 women screened, 122 were eligible and 101 agreed to participate in the study. Six women were excluded from the final dataset: one discontinued the use of contraception because of signalled decreased libido, two discontinued for irregular bleeding, and three were lost to follow-up (Figure 1). In the dataset of subjects analyzed, the implant was retained for the entire 6-month period of evaluation.

Participants' characteristics are reported in Table 1. Mean age (\pm SD) of the women was 28.8 \pm 6.8 years, mean BMI was 23.4 \pm 2.5 kg/m², and average length of relationship was 7.7 \pm 5.9 years.

A reduction in mean BMI was observed after 6 months, as was an increase in weekly frequency of sexual intercourse (T0–T1). The mean change (\pm SD) in BMI was 0.5 \pm 0.9 ($p = .013$) and in frequency of sexual intercourse -1 ± 1.5 ($p = .003$).

Sexual profile showed a significant increase in some positive parameters of the IRSF (pleasure, personal initiative, orgasm, intensity of orgasm, and satisfaction) and a significant decrease in some negative parameters (anxiety and discomfort, Figure 2). In particular, at 3 months after implant insertion, analysis of Δ VAS1 showed an increase in orgasms, orgasm intensity, and satisfaction, and a decrease in anxiety; at 6 months, Δ VAS2 demonstrated an increase in pleasure, personal initiative, orgasm, and satisfaction and a reduction

TABLE 1: Demographic characteristics of women who completed the study (N=95).

Characteristic	n	%
Age, years		
<18	5	5.3
18–22	28	29.4
23–27	45	47.4
28–32	11	11.6
>32	6	6.3
Nationality		
Italian	79	83.1
Other	16	16.9
Marital status		
Unmarried	63	66.3
Married	28	29.5
Divorced	4	4.2
Employment		
Student	42	44.2
Employed	22	23.2
Housewife	18	18.9
Unemployed	13	13.7
Previous contraceptive use		
Yes	86	90.5
No	9	9.5
Method used		
Condom	15	15.8
Combined hormonal contraceptive	27	28.4
Combined contraceptive methods (e.g., COC + condom)	49	51.6
Other methods (e.g., IUD)	4	4.2

in anxiety and discomfort. No difference was seen in Δ VAS3 (Figure 2).

These improvements corresponded to the data obtained from the FSFI questionnaire: FSFI total score was positively correlated with the use of Nexplanon (Figure 3). Before the implant was inserted, total score was 27.8 (range, 25.1–33.4). This increased to 30.8 (25.4–34.2) after 3 months and 31.4 (25.7–34.2) after 6 months.

Overall, metabolic parameters remained within the normal range, with a minimal decrease in AST, ALT, total cholesterol, triglycerides, and activated partial thromboplastin time values and an increase in glycemia and prothrombin activity (Figure 4). In detail, at 3 months after implant insertion, we found an increase in glycemia and prothrombin activity and a reduction in AST, ALT, total cholesterol, and triglycerides; after 6 months of implant, we found a reduction in AST, ALT, total cholesterol, and triglycerides and an increase in prothrombin activity. All changes were nonsignificant and within the normal range.

Between first and second control there was a reduction in triglycerides that was shown to be statistically significant ($p=.04$).

When bleeding diaries were evaluated, a reduction in menstrual flow quantity was observed in 50% of women.

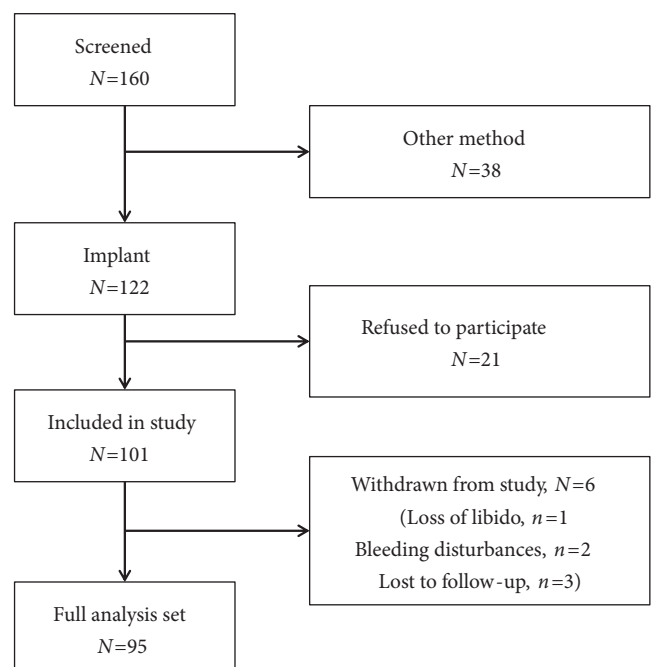


FIGURE 1: Study flowchart.

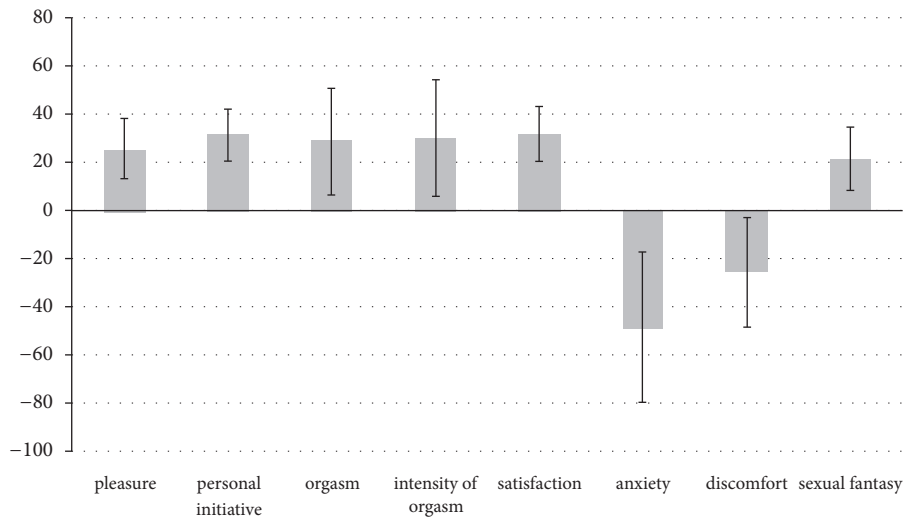


FIGURE 2: Effects on sexual function in terms of Δ VAS at 6 months (VAS6) after insertion. The evaluation was performed for each item investigated through the Interview for Ratings of Sexual Function (IRSF) questionnaire.

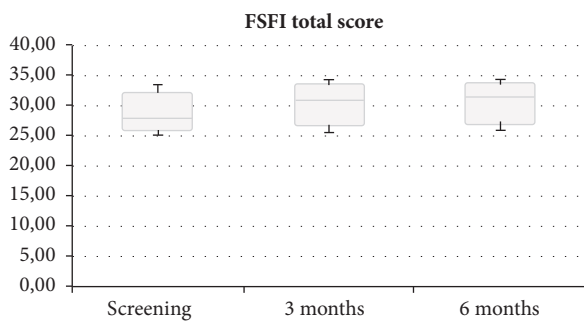


FIGURE 3: Total Female Sexual Function Index (FFSI) score at recruitment and 3 and 6 months after insertion of Nexplanon. Data are expressed as mean (minimum to maximum).

Amenorrhea was reported by 9% at 3 months and increased to 23% at 156 6 months. The proportion reporting infrequent bleeding also increased, whereas irregular and prolonged bleeding decreased over this time (Table 2).

4. Discussion

The influence of the subcutaneous contraceptive Nexplanon on the sexual profile is currently not well reported in literature and, to the best of our knowledge, ours is one of the most complete studies to analyze libido in users of this long-acting contraceptive through both a VAS and FSFI score.

Women reported an increase in frequency and quality of coitus and documented an increase in pleasure, satisfaction, frequency, and intensity of orgasm. Participants also reported an increase in sexual desire, which was confirmed by a statistically significant increase in personal initiative/drive.

The positive effect of this type of contraception was further supported by the reduction in anxiety and discomfort, and women experienced intercourse with greater freedom and sense of safety.

Our data show that the use of Nexplanon involves a more confident psychological predisposition to sexual behavior in women. We do not know if these positive effects could also be related to the high contraceptive efficacy perceived and reported [17–19].

The few published studies on the use of Nexplanon implant and sexuality are on line with our data. Di Carlo and its group [20] showed that the implant seems to have a positive impact on quality of life after the first three months of therapy without any negative effects on libido and on sexual function.

Moreover, when the implant was compared to other types of contraceptives women who used the subcutaneous implant had higher scores on the McCoy female sexuality questionnaire and higher levels of androstenedione [9, 13].

Once the issue of sexuality was addressed utilizing other LARC, progestin only contraceptives, namely, the levonorgestrel intrauterine system (LNG-IUS), a positive effect on quality of life and sexuality has been reported [21].

In a multicenter cross-sectional study Enzlin and coll. concluded that women using a LNG-IUS do not differ from those wearing a Cu-IUD with regard to psychological and sexual functioning [22].

Also, the decreased body weight and BMI in users of Nexplanon could have been a factor which improved sexual life because a better body image and confidence can of course have psychosocial and relational consequences.

Changes in menstrual patterns were not regarded to be of relevance by the women, and the observed metabolic effects were not of concern to women's health.

As the influence of the subcutaneous contraceptive Nexplanon on the sexual profile is currently not well reported in literature, to the best of our knowledge ours is one of the most complete studies to analyze libido in users of this long-acting contraceptive through both a VAS and FSFI score.

Limits of our study are the small sample size, and given the importance of this topic and its potential effects on the

TABLE 2: Menstrual patterns at 3 months and 6 months.

	3 months		6 months		p
	n	%	n	%	
Not bleeding (amenorrhea)	9	9.5	22	23.2	.03
Infrequent bleeding (<2 episodes)	19	20.0	31	32.6	NS
Frequent bleeding (4 episodes)	16	16.8	9	9.5	NS
Irregular bleeding, range of lengths of bleeding-free intervals exceeding 17 days	31	32.6	16	16.8	.03
Prolonged bleeding (>10 days)	13	13.7	5	5.3	NS
Normal menstrual pattern	7	7.4	12	12.6	NS

NS= not significant.

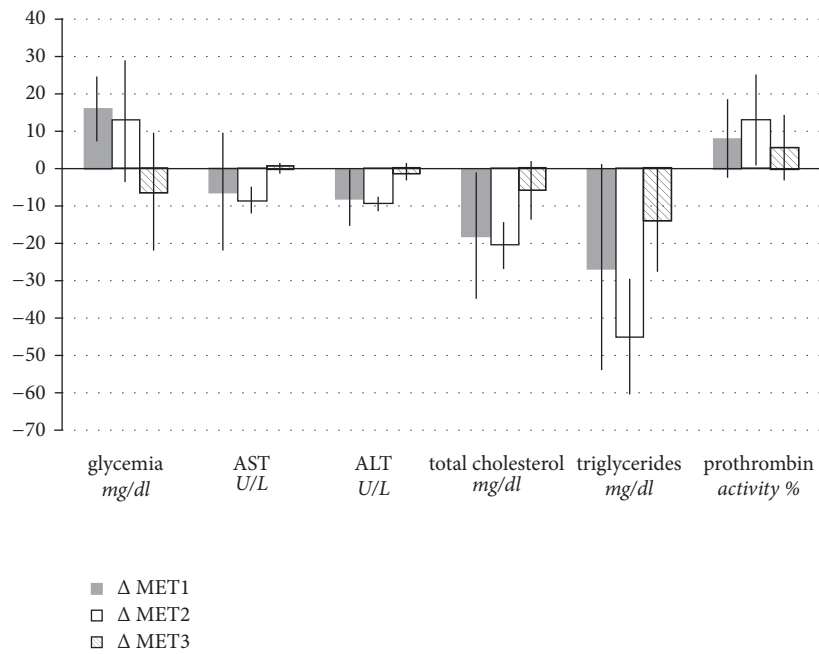


FIGURE 4: Metabolic parameters were evaluated before implant insertion (MET0) and 3 months (MET3) and 6 months (MET6) after implant. For each parameter measured, we calculated the difference (Δ MET) at three different times: Δ MET1 = MET3–MET0; Δ MET2 = MET6–MET0; Δ MET3 = MET6–MET3. Data are expressed as mean \pm SD.

fertile population, a future study with a larger number of observed cases could give more detailed information and confirmation of our results.

Sexual acceptability should receive more attention in both contraceptive research and counseling. Women’s perceptions of how their method affects their sex life were associated with contraceptive continuation over time [23].

Data Availability

The data used to support the findings of this study are available from the corresponding author upon request.

Conflicts of Interest

No potential conflicts of interest were reported by the authors.

References

- [1] D. Bateson, K. McNamee, and P. Briggs, “Newer non-oral hormonal contraception,” *BMJ*, vol. 346, no. 7898, article no. f341, 2013.
- [2] E. Mommers, G.-F. Blum, T. G. Gent, K. P. Peters, T. S. Sordal, and M. Marintcheva-Petrova, “Nexplanon, a radiopaque etonogestrel implant in combination with a next-generation applicator: 3-year results of a noncomparative multicenter trial,” *American Journal of Obstetrics & Gynecology*, vol. 207, no. 5, pp. 388–e6, 2012.
- [3] C. Battaglia, B. Battaglia, F. Mancini et al., “Sexual behavior and oral contraception: a pilot study,” *The Journal of Sexual Medicine*, vol. 9, no. 2, pp. 550–557, 2012.
- [4] S. Caruso, C. Agnello, M. Romano et al., “Preliminary study on the effect of four-phasic estradiol valerate and dienogest (e2v/dng) oral contraceptive on the quality of sexual life,” *The Journal of Sexual Medicine*, vol. 8, no. 10, pp. 2841–2850, 2011.

- [5] M. Guida, A. Di Spiezio Sardo, S. Bramante et al., "Effects of two types of hormonal contraception - Oral versus intravaginal - On the sexual life of women and their partners," *Human Reproduction*, vol. 20, no. 4, pp. 1100–1106, 2005.
- [6] R. Sabatini and R. Cagiano, "Comparison profiles of cycle control, side effects and sexual satisfaction of three hormonal contraceptives," *Contraception*, vol. 74, no. 3, pp. 220–223, 2006.
- [7] L. J. Burrows, M. Basha, and A. T. Goldstein, "The effects of hormonal contraceptives on female sexuality: a review," *The Journal of Sexual Medicine*, vol. 9, no. 9, pp. 2213–2223, 2012.
- [8] Z. Pastor, K. Holla, and R. Chmel, "The influence of combined oral contraceptives on female sexual desire: A systematic review," *The European Journal of Contraception and Reproductive Health Care*, vol. 18, no. 1, pp. 27–43, 2013.
- [9] M. Guida, F. Cibarelli, J. Troisi, A. Gallo, A. R. Palumbo, and A. Di Spiezio Sardo, "Sexual life impact evaluation of different hormonal contraceptives on the basis of their methods of administration," *Archives of Gynecology and Obstetrics*, vol. 290, no. 6, pp. 1239–1247, 2014.
- [10] P. D. Blumenthal, K. Gemzell-Danielsson, and M. Marintcheva-Petrova, "Tolerability and clinical safety of Implanon®," *The European Journal of Contraception and Reproductive Health Care*, vol. 13, no. 1, pp. 29–36, 2008.
- [11] D. Apter, "Contraception options: aspects unique to adolescent and young adult," *Best 2 Practice & Research: Clinical Obstetrics & Gynaecology*, vol. 48, pp. 115–127, 2018.
- [12] E. R. Walsh-Buhi and H. L. Helmy, "Trends in long-acting reversible contraceptive (LARC) use, LARC use predictors, and dual-method use among a national sample of college women," *Journal of American College Health*, vol. 66, no. 4, pp. 225–236, 2018.
- [13] M. Guida, C. Di Carlo, J. Troisi et al., "The sexuological impact of hormonal contraceptives based on their route of administration," *Gynecological Endocrinology*, vol. 33, no. 3, pp. 218–222, 2017.
- [14] J. Bancroft, G. Tyrer, and P. Warner, "The classification of sexual problems in women," *British Journal of Sexual Medicine*, vol. 9, pp. 30–37, 1982.
- [15] E. M. Belsey and T. M. M. Farley, "The analysis of menstrual bleeding patterns: A review," *Contraception*, vol. 38, no. 2, pp. 129–156, 1988.
- [16] J. M. Higham, P. M. S. O'Brien, and R. W. Shaw, "Assessment of menstrual blood loss using a pictorial chart," *British Journal of Obstetrics and Gynaecology*, vol. 97, no. 8, pp. 734–739, 1990.
- [17] L. Vicente, D. Mendonca, M. Dingle, R. Duarte, and J. Manuel Boavida, "Etonogestrel implant in women with diabetes mellitus," *The European Journal of Contraception and Reproductive Health Care*, vol. 13, no. 4, pp. 387–395, 2008.
- [18] R. A. Bonnema, M. C. McNamara, and A. L. Spencer, "Contraception choices in women with underlying medical conditions," *American Family Physician*, vol. 82, no. 6, pp. 621–628, 2010.
- [19] R. Beerthuizen, "Safety and efficacy of the subdermal etonogestrel contraceptive implant Implanon," *Journal of Family Planning and Reproductive Health Care*, vol. 43, no. 2, pp. 118–118, 2017.
- [20] C. Di Carlo, A. Sansone, N. De Rosa et al., "Impact of an implantable steroid contraceptive (etonogestrel-releasing implant) on quality of life and sexual function: A preliminary study," *Gynecological Endocrinology*, vol. 30, no. 1, pp. 53–56, 2014.
- [21] C. Bastianelli, M. Farris, and S. Rapiti, "Mirena, an Italian experience," *Minerva Ginecologica*, vol. 63, no. 4, pp. 343–349, 2011.
- [22] P. Enzlin, S. Weyers, D. Janssens et al., "Sexual functioning in women using levonorgestrel-releasing intrauterine systems as compared to copper intrauterine devices," *The Journal of Sexual Medicine*, vol. 9, no. 4, pp. 1065–1073, 2012.
- [23] J. N. Sanders, J. A. Higgins, D. E. Adkins, G. J. Stoddard, L. M. Gawron, and D. K. Turok, "The impact of sexual satisfaction, functioning, and perceived contraceptive effects on sex life on IUD and implant continuation at 1 year," *Women's Health Issues*, vol. 28, no. 5, pp. 401–407, 2018.