



Article

# Melanogenesis Is Directly Affected by Metabolites of Melatonin in Human Melanoma Cells

Jack K. S. Möller <sup>1</sup>, Kinga Linowiecka <sup>2,3</sup> , Maciej Gagat <sup>4</sup> , Anna A. Brożyna <sup>2</sup> , Marek Foksiński <sup>5</sup> , Agnieszka Wolnicka-Glubisz <sup>6</sup> , Elżbieta Pyza <sup>7</sup> , Russel J. Reiter <sup>8</sup> , Meri K. Tulic <sup>9</sup> , Andrzej T. Slominski <sup>10,11</sup> , Kerstin Steinbrink <sup>1</sup> and Konrad Kleszczynski <sup>1,\*</sup>

- <sup>1</sup> Department of Dermatology, University of Münster, Von-Esmarch-Str. 58, 48149 Münster, Germany; j.moel40@uni-muenster.de (J.K.S.M.); kerstin.steinbrink@ukmuenster.de (K.S.)
- <sup>2</sup> Department of Human Biology, Faculty of Biological and Veterinary Sciences, Nicolaus Copernicus University, Lwowska 1, 87-100 Toruń, Poland; klinowiecka@umk.pl (K.L.); anna.brozyna@umk.pl (A.A.B.)
- <sup>3</sup> Phillip Frost Department of Dermatology & Cutaneous Surgery, University of Miami Miller School of Medicine, Miami, FL 33125, USA
- <sup>4</sup> Department of Histology and Embryology, Collegium Medicum in Bydgoszcz, Nicolaus Copernicus University in Toruń, 85-092 Bydgoszcz, Poland; mgagat@cm.umk.pl
- <sup>5</sup> Department of Clinical Biochemistry, Faculty of Pharmacy, Collegium Medicum in Bydgoszcz, Nicolaus Copernicus University in Toruń, 85-092 Bydgoszcz, Poland; marekf@cm.umk.pl
- <sup>6</sup> Department of Biophysics and Cancer Biology, Faculty of Biochemistry, Biophysics and Biotechnology, Jagiellonian University, Gronostajowa 7, 30-387 Krakow, Poland; a.wolnicka-glubisz@uj.edu.pl
- <sup>7</sup> Department of Cell Biology and Imaging, Institute of Zoology and Biomedical Research, Jagiellonian University, Gronostajowa 9, 30-387 Kraków, Poland; elzbieta.pyza@uj.edu.pl
- <sup>8</sup> Department of Cell Systems and Anatomy, UT Health, Long School of Medicine, San Antonio, TX 78229, USA; reiter@uthscsa.edu
- <sup>9</sup> Team 12, INSERM U1065, Centre Méditerranéen de Médecine Moléculaire (C3M), Université Côte d'Azur, 06200 Nice, France; meri.tulic@unice.fr
- <sup>10</sup> Department of Dermatology, Comprehensive Cancer Center, University of Alabama at Birmingham, Birmingham, AL 35294, USA; aslominski@uabmc.edu
- <sup>11</sup> Pathology and Laboratory Medicine Service, VA Medical Center, Birmingham, AL 35294, USA
- \* Correspondence: konrad.kleszczynski@ukmuenster.de; Tel.: +49-251-83-56523; Fax: +49-251-83-58646



**Citation:** Möller, J.K.S.; Linowiecka, K.; Gagat, M.; Brożyna, A.A.; Foksiński, M.; Wolnicka-Glubisz, A.; Pyza, E.; Reiter, R.J.; Tulic, M.K.; Slominski, A.T.; et al. Melanogenesis Is Directly Affected by Metabolites of Melatonin in Human Melanoma Cells. *Int. J. Mol. Sci.* **2023**, *24*, 14947. <https://doi.org/10.3390/ijms241914947>

Academic Editor: Karel Smetana, Jr.

Received: 8 September 2023

Revised: 3 October 2023

Accepted: 4 October 2023

Published: 6 October 2023

Corrected: 26 March 2025



**Copyright:** © 2023 by the authors. Licensee MDPI, Basel, Switzerland. This article is an open access article distributed under the terms and conditions of the Creative Commons Attribution (CC BY) license (<https://creativecommons.org/licenses/by/4.0/>).

**Abstract:** Melatonin (*N*-acetyl-5-methoxytryptamine, MEL), its kynurenic (*N*<sup>1</sup>-acetyl-*N*<sup>2</sup>-formyl-5-methoxykynurenine, AFMK) and indolic derivatives (6-hydroxymelatonin, 6(OH)MEL and 5-methoxytryptamine, 5-MT) are endogenously produced in human epidermis. Melatonin, produced by the pineal gland, brain and peripheral organs, displays a diversity of physiological functions including anti-inflammatory, immunomodulatory, and anti-tumor capacities. Herein, we assessed their regulatory effect on melanogenesis using amelanotic (A375, Sk-Mel-28) and highly pigmented (MNT-1, melanotic) human melanoma cell lines. We discovered that subjected compounds decrease the downstream pathway of melanin synthesis by causing a significant drop of cyclic adenosine monophosphate (cAMP) level, the microphthalmia-associated transcription factor (MITF) and resultant collapse of tyrosinase (TYR) activity, and melanin content comparatively to *N*-phenylthiourea (PTU, a positive control). We observed a reduction in pigment in melanosomes visualized by the transmission electron microscopy. Finally, we assessed the role of G-protein-coupled seven-transmembrane-domain receptors. Obtained results revealed that nonselective MT1 and MT2 receptor antagonist (luzindole) or selective MT2 receptor antagonist (4-P-PDOT) did not affect dysregulation of the melanin pathway indicating a receptor-independent mechanism. Our findings, together with the current state of the art, provide a convenient experimental model to study the complex relationship between metabolites of melatonin and the control of pigmentation serving as a future and rationale strategy for targeted therapies of melanoma-affected patients.

**Keywords:** melatonin; melanogenesis; kynurenic and indolic metabolites; tyrosinase; human melanoma; G-protein-coupled membrane receptors; luzindole; molecular mechanism

## 1. Introduction

In recent years, significant advances in our understanding of melanogenesis and its control have been made as the result of studies on melanoma [1]. Recently, numerous investigations described melanogenesis as a complex, multistage process involving the synthesis of melanosomes, the transport of melanosomes to the dendrite tips of the melanocytes, and their release. In melanoma cells and melanocytes, melanin synthesis is regulated by a cascade of enzymatic reactions. The initial step of melanin synthesis involves the oxidation of tyrosinase to 3,4-dihydroxyphenylalanine (DOPA) by tyrosinase (TYR), the rate-limiting enzyme of melanogenesis [2]. Melanogenesis is stimulated by various effectors, including paracrine melanogenic factors ( $\alpha$ -melanocyte-stimulating hormone ( $\alpha$ -MSH), endothelin-1, and stem cell factor), cyclic adenosine monophosphate (cAMP)-elevating agent (forskolin or cholera toxin), and ultraviolet radiation [3,4]. Also, melanogenesis is controlled via intracellular signaling pathways such as protein kinases (protein kinase A (PKA), protein kinase C- $\alpha$  (PKC- $\alpha$ ), protein kinase C- $\beta$  (PKC- $\beta$ )) and mitogen-activated protein kinase (MAPK) [4–9]. The cAMP pathway, in particular, plays a key role in the regulation of melanogenesis through the upregulation of the key transcription factor microphthalmia-associated transcription factor (MITF) and subsequent melanogenic enzymes including pre-existing TYR protein and TYR mRNA [5,10,11]. In addition, melanogenesis can profoundly affect the biologic behavior of melanoma cells as well as that of the surrounding environment [12,13]. Hormonal and nutritional factors regulate these biochemical processes, and the concentration of these factors determines the amount of melanin production [13].

Melatonin (*N*-acetyl-5-methoxytryptamine, MEL) is the major biologically active molecule secreted by the pineal gland [14,15]. Melatonin and its metabolites have been found throughout the evolutionary spectrum, including animals, plants, microbes [16–19] and even honey [20,21]. In mammals, the pineal gland secretes melatonin into the blood stream, where it exerts a range of well-documented physiological functions, acting as a neurotransmitter for hormonal and immunomodulatory actions [22,23]. In the blood, the nighttime concentration of melatonin is in the low nanomolar range, but in other fluids and tissues, the concentration of this indoleamine is several orders of magnitude higher than that in the plasma [21]. Some of the physiological actions of melatonin are mediated by its interaction with two well-characterized G-protein-coupled seven-transmembrane-domain receptors MT1 and MT2, while other phenotypic effects are independent of these MT receptors [24,25].

Melatonin exerts a vast array of biological functions where the cell growth inhibitory properties have been one of better known actions. Thus, anti-proliferative activity has been demonstrated both in vitro and in vivo in melanoma cells [26–31]. Next to melatonin, the increasing importance of its metabolites has come into focus due to their ability to reduce melanoma growth. Indolic, kynurenic, and classical pathways are described as the main pathways of melatonin metabolism [32–34]. *N*<sup>1</sup>-acetyl-*N*<sup>2</sup>-formyl-5-methoxykynuramine (AFMK) is produced from melatonin via kynurenic pathway [33,34], through interaction with H<sub>2</sub>O<sub>2</sub> [35,36]. Metabolites of melatonin also include 6-hydroxymelatonin (6(OH)MEL), and 5-methoxytryptamine (5-MT) produced via the indolic pathway [37].

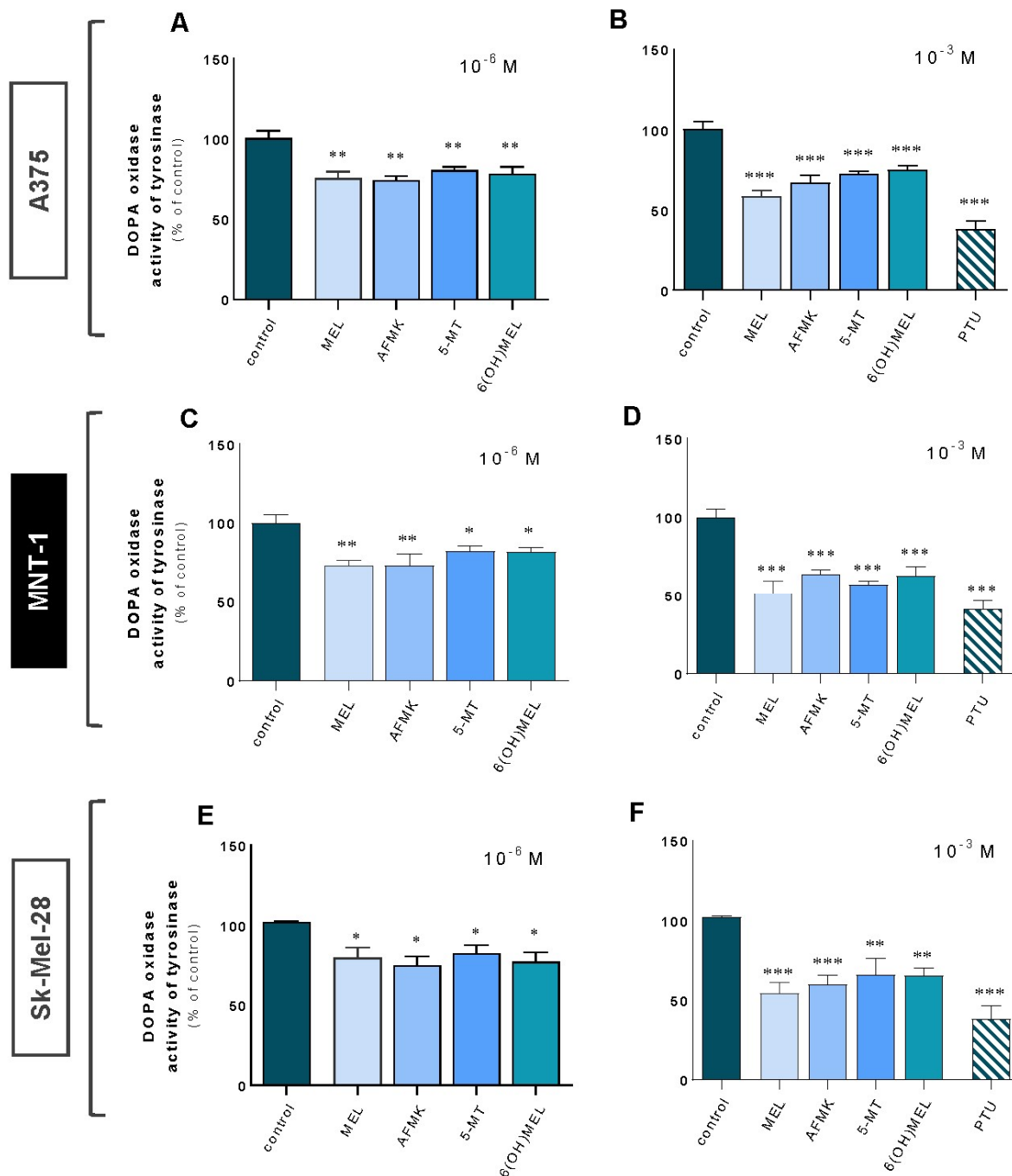
We have recently reported that melatonin controls melanin synthesis in both rodents [38] and human melanoma cells [30]. In this report, we comparatively assessed the impact of its metabolites on the regulation of melanogenesis and the role of MT1 and MT2 membrane receptors in this process using the conventional receptor antagonists, luzindole and 4-P-PDOT.

## 2. Results

### 2.1. Melatonin and Its Metabolites Decrease Tyrosinase Activity and Melanin Content

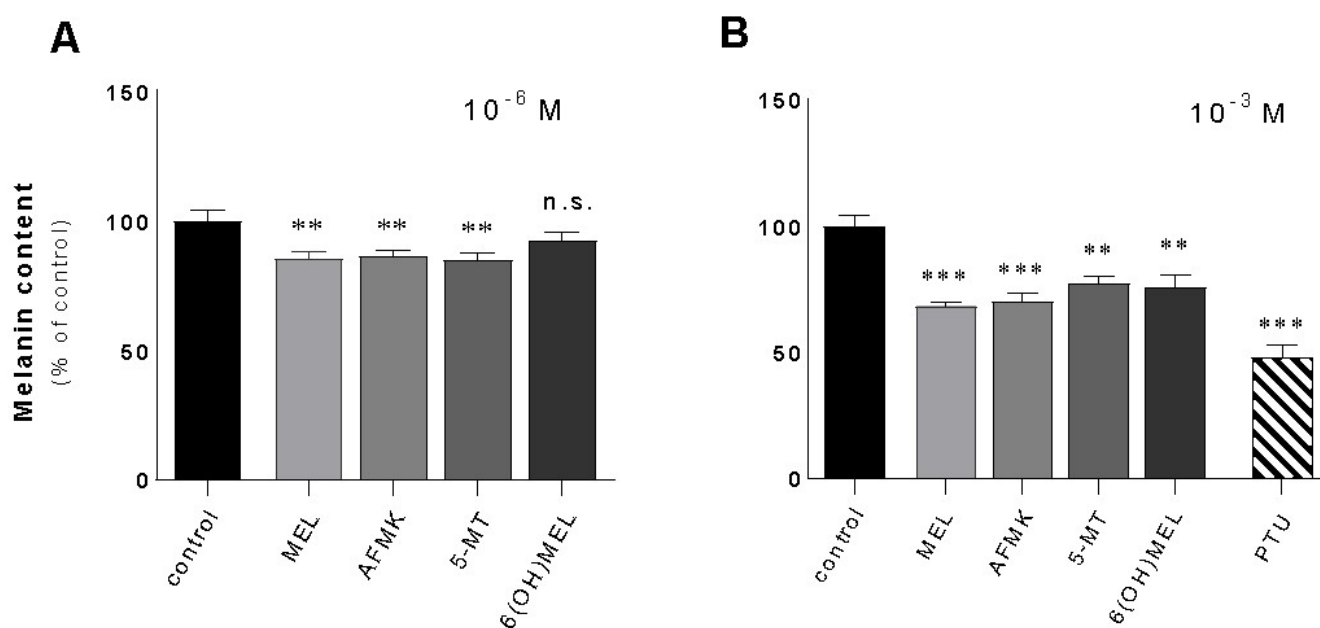
Firstly, we assessed the impact of subjected compounds on tyrosinase activity using amelanotic (A375, Sk-Mel-28) and highly pigmented (melanotic) (MNT-1) melanoma cells (Figure 1A–F). A significant decrease in TYR was noticed in all cellular models ranging from

18% to 26% for  $10^{-6}$  M (Figure 1A,C,E) and from 26% to 49% for a higher dose ( $10^{-3}$  M) of melatonin and its metabolites (Figure 1B,D,F). Comparatively, treatment with  $10^{-3}$  M *N*-phenylthiourea (PTU, positive control) triggered a drop in TYR activity on average of 61% versus control cells.



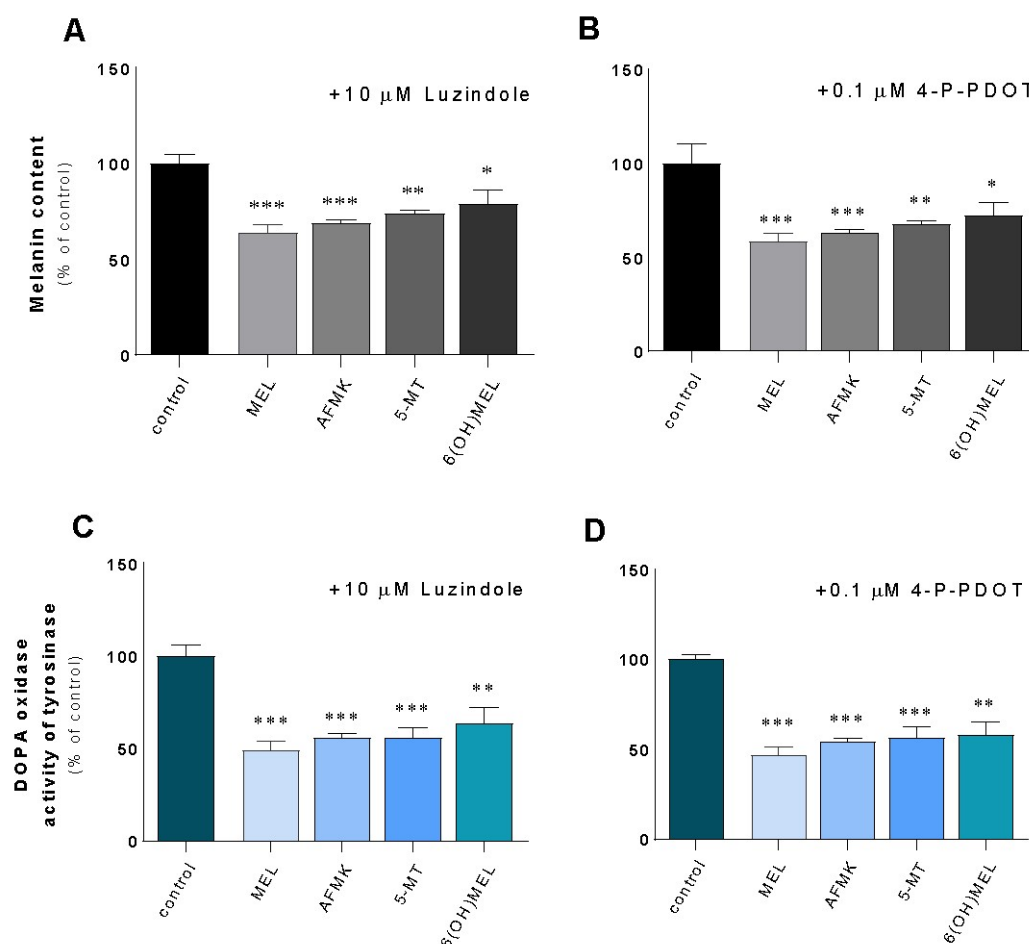
**Figure 1.** Tyrosinase activity decreased in melanoma cells in presence of melatonin and its metabolites. Amelanotic (A375 and Sk-Mel-28) and melanotic (MNT-1) human melanoma cell lines were incubated with MEL, AFMK, 5-MT and 6(OH)MEL for 72 h with  $10^{-6}$  M (A,C,E) or  $10^{-3}$  M (B,D,F) in comparison to melanogenic inhibitor, that is,  $10^{-3}$  M *N*-phenylthiourea (PTU, positive control) and assessed as described in *Materials and Methods*. Data are presented as the mean + S.E.M. ( $n = 5$ ) and values are normalized and expressed as percentage of the control value. Statistically significant differences are indicated as \*  $p < 0.05$ , \*\*  $p < 0.01$ , \*\*\*  $p < 0.001$ .

Furthermore, the evaluation of melanin content and following assessments were performed using highly pigmented melanoma cell lines. Thus, melanotic MNT-1 melanoma has been identified as an optimal model to investigate the mechanism of melanogenesis itself but also the efficacy of melanogenic regulators. This selection is also in agreement with previous reports regarding pigmentation research [39–42]. Namely, melatonin and its metabolites distinctly decreased melanin content by 15% at a dose of  $10^{-6}$  M (Figure 2A) while a higher concentration ( $10^{-3}$  M) significantly deepened this response reaching the level versus control cells of 32% (MEL), 31% (AFMK), 23% (5-MT), and 25% (6(OH)MEL) (Figure 2B). Cells incubated with  $10^{-3}$  M PTU revealed a collapse of melanin synthesis of 53%.



**Figure 2.** Melatonin and its metabolites reduced melanin content melanotic human MNT-1 melanoma cells. Cells were treated with MEL, AFMK, 5-MT and 6(OH)MEL for 72 h with  $10^{-6}$  M (A) or  $10^{-3}$  M (B) in comparison to melanogenic inhibitor, that is,  $10^{-3}$  M PTU (positive control) and assessed as described in *Materials and Methods*. Data are presented as the mean + S.E.M. ( $n = 5$ ) and values are normalized and expressed as percentage of the control value. Statistically significant differences are indicated as \*\*  $p < 0.01$ , \*\*\*  $p < 0.001$ , n.s.—not significant.

Additionally, we evaluated the role of G-coupled membrane MT1 and MT2 receptors. Thus, their activation has been reported to be involved in melatonin's anti-proliferative properties in human cancer cells such as colon cancer cells [43], prostate cancer cells [44,45], or melanoma cells [46,47]. Knowing the presence of MT1/MT2 melatonin's receptors, we further examined whether melatonin-regulated melanin content and TYR activity are receptor-mediated; experiments were performed in the presence of two well-characterized melatonin receptor antagonists (luzindole and 4-P-PDOT). The obtained results indicate that neither luzindole (Figure 3A,C), nor or 4-P-PDOT (Figure 3B,D) affected the actions of melatonin or its metabolites on melanogenesis, suggesting that this process can be regulated independently of MT1 and MT2. Namely, in the presence of luzindole, there was drop of melanin content ranging from 22% (6(OH)MEL) to 37% (MEL) and a collapse of TYR activity from 37% to 51% for 6(OH)MEL and melatonin, respectively. In addition, pre-incubation with 4-P-PDOT showed similar pattern of regulation (Figure 3B,D).



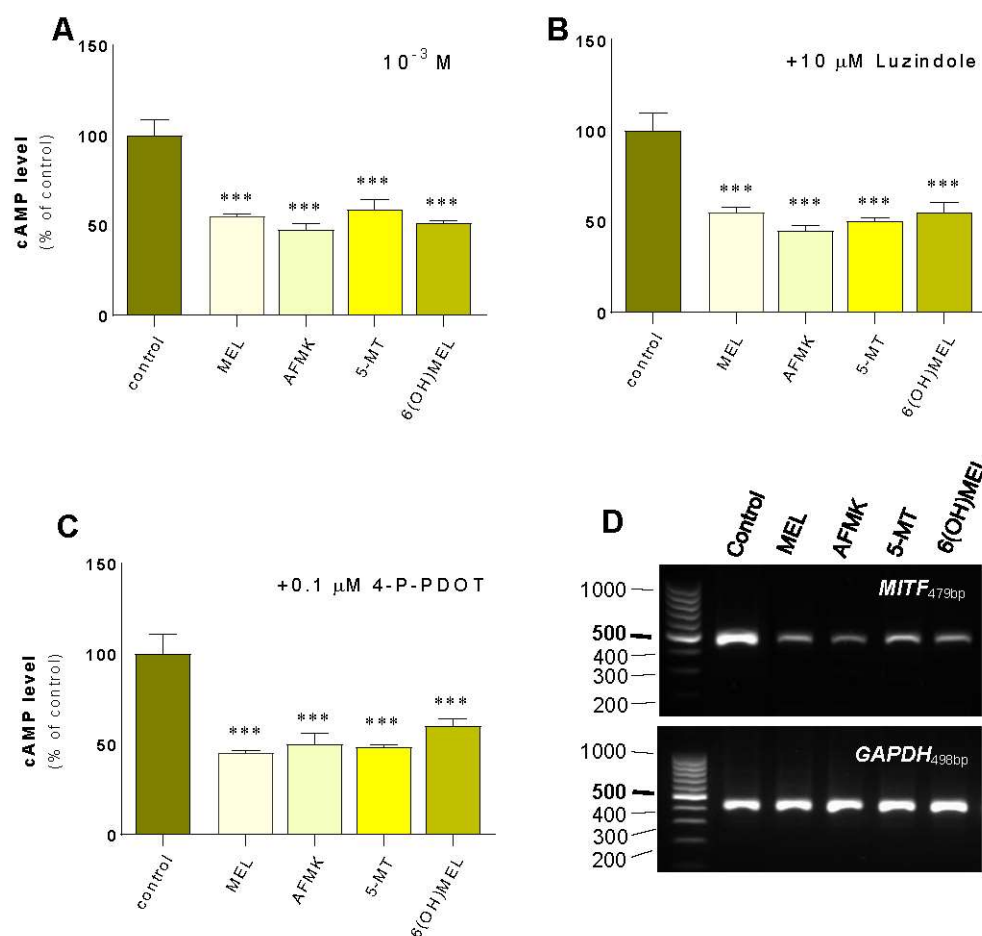
**Figure 3.** Assessment of the role of MT1/MT2 receptors in terms of melatonin and its metabolites-mediated melanogenesis in human MNT-1 melanoma cells. Cells were pre-incubated for 2 h with a nonselective MT1 and MT2 receptor antagonist, that is, 10  $\mu$ M luzindole or selective MT2 receptor antagonist, i.e., 0.1  $\mu$ M 4-P-PDOT. Next, cells were treated for 72 h with  $10^{-3}$  M MEL, AFMK, 5-MT or 6(OH)MEL and assessed for melanin content (A,B) and tyrosinase activity (C,D) as described in *Materials and Methods*. Data are presented as the mean + S.E.M. ( $n = 5$ ) and values are normalized and expressed as percentage of the control value. Statistically significant differences are indicated as \*  $p < 0.05$ , \*\*  $p < 0.01$ , \*\*\*  $p < 0.001$ .

## 2.2. cAMP Is Reduced by Melatonin and Its Metabolites Independently of G-Coupled Membrane Receptors

Melanin synthesis in pigmented cells is regulated by a complex and interconnected set of intracellular signaling pathways, including PKA (stimulated by cAMP elevators), PKC (stimulated by endothelin) and MAPK (ERKs; stimulated by growth factors). The cAMP plays a pivotal role in the regulation of melanogenesis through the activation of PKA and cAMP responsive element binding protein (CREB), which led to the upregulation of the expression of microphthalmia-associated transcription factor (MITF) [48].

First, we assessed the effect of MEL and its metabolites on the regulatory pathways of melanogenesis including cAMP signaling. MNT-1 melanoma cells revealed a significant decrease in cAMP (Figure 4A) of 45% (MEL), 53% (AFMK), 62% (5-MT) and 49% (6(OH)MEL) according to our observation of decreased TYR activity and melanin synthesis. In parallel, we assessed cAMP level in the presence of 10  $\mu$ M luzindole (Figure 4B) and 0.1  $\mu$ M 4-P-PDOT (Figure 4C). The obtained results showed clearly that a reduction of cAMP level is induced by MEL and its metabolites independently of the MT1/MT2 membrane receptors. Additionally, we evaluated the effect of subjected indoleamines on *MITF* expression, the cAMP downstream pathway. Thus, we observed its distinct reduction

in the presence of MEL and its metabolites (Figure 4D) and the resultant loss of melanin content in melanosomes (Figure 5).

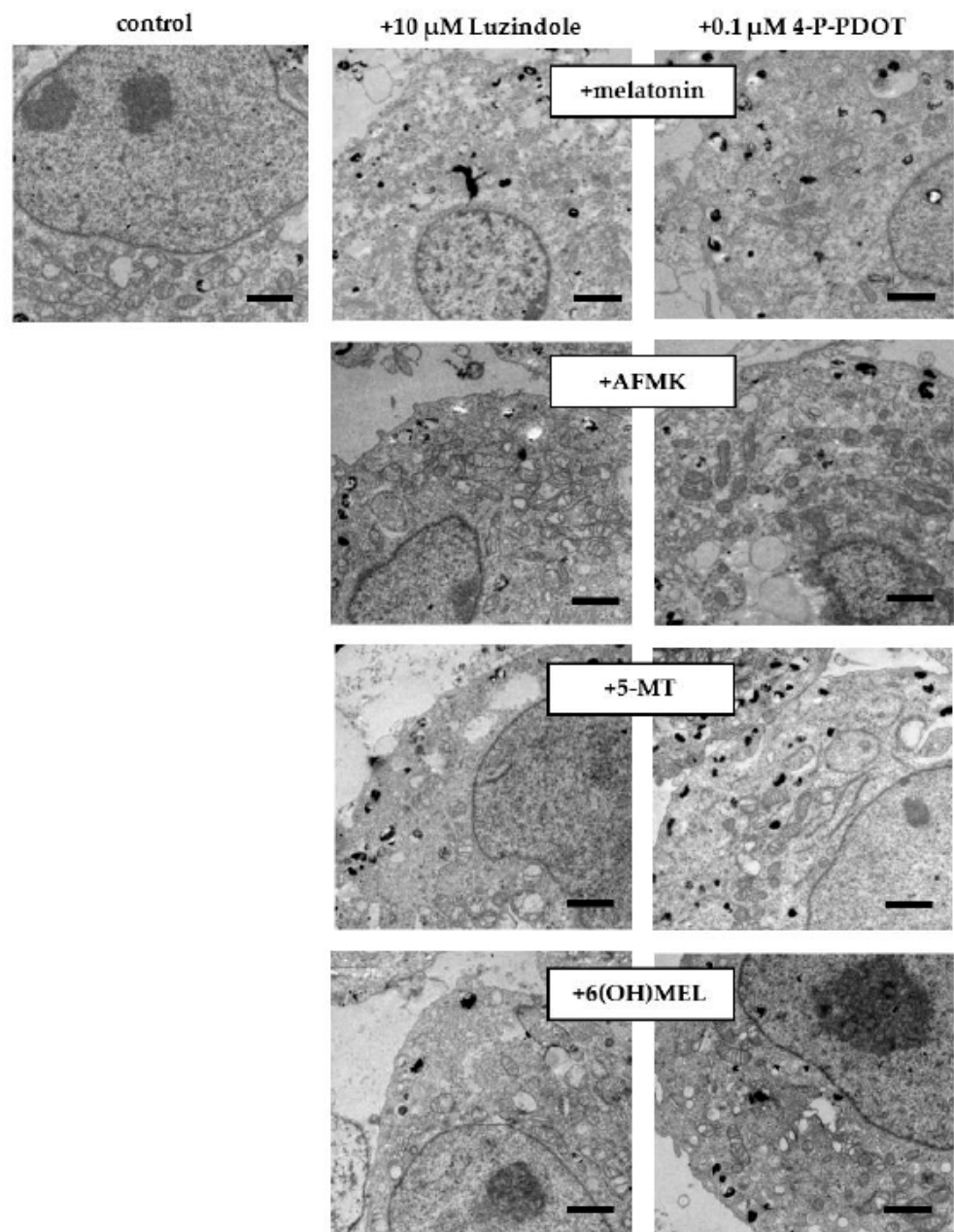


**Figure 4.** Evaluation of the effect of melatonin and its metabolites on cAMP level and *MITF* in comparison to the role of MT1/MT2 receptors. Human MNT-1 melanoma cells were treated for 72 h with  $10^{-3}$  M MEL, AFMK, 5-MT or 6(OH)MEL and assessed for cAMP level (A). Comparatively, the role of MT1/MT2 receptors was assessed followed by 2 h pre-incubation with 10  $\mu$ M luzindole (MT1/MT2) (B) or 0.1  $\mu$ M 4-P-PDOT (MT2) (C) as described in *Materials and Methods*. Data are presented as the mean + S.E.M. ( $n = 5$ ) and values are normalized and expressed as percentage of the control value. Statistically significant differences are indicated as \*\*\*  $p < 0.001$ . (D) PCR assessment of *MITF* expression in presence of MEL and its metabolites.

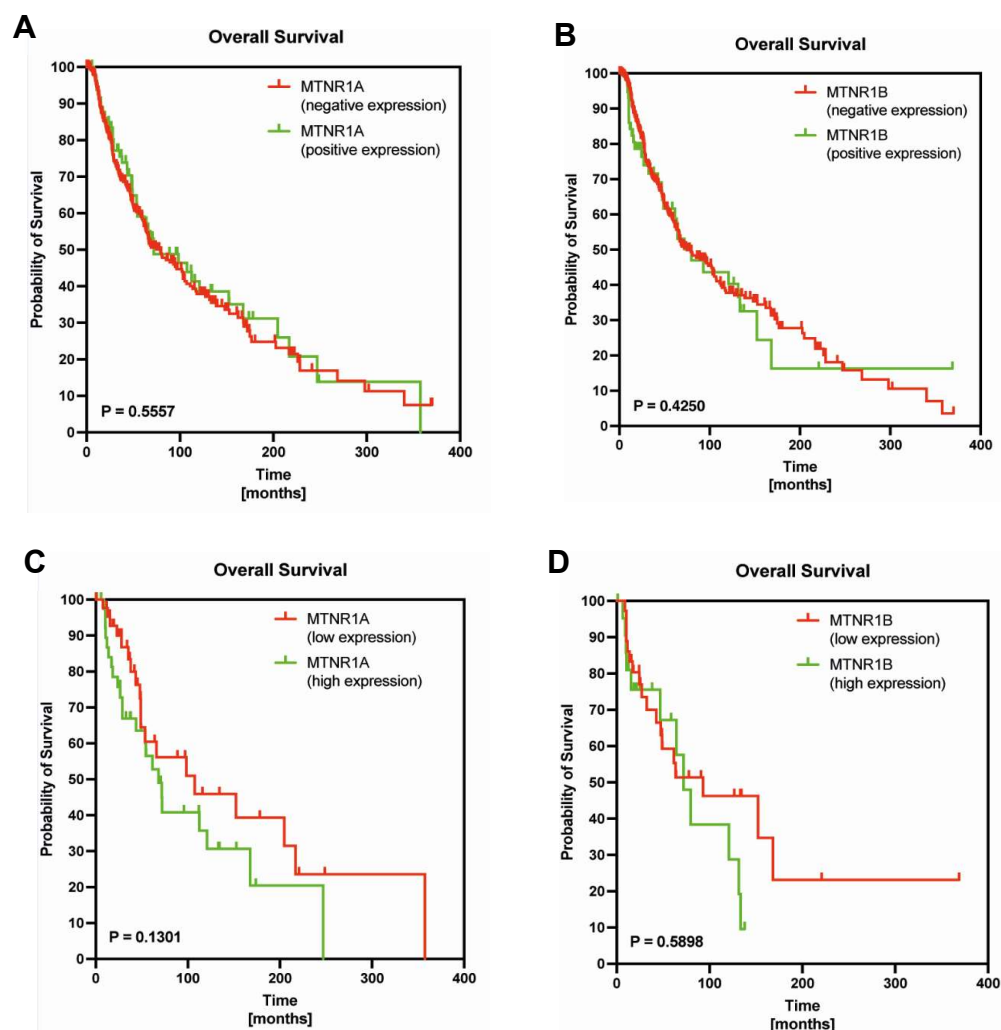
### 2.3. In Silico Assessment

To determine whether levels of MTNR1A or MTNR1B expression might be associated with disease outcome in melanoma patients, we examined publicly available expression data from TCGA (Figure 6). The Kaplan–Meier curves indicated that there were no significant differences in overall survival between melanoma patients stratified by MTNR1A (78.97 vs. 72.06,  $p = 0.5557$ ) and MTNR1B (74.73 vs. 79.59,  $p = 0.4250$ ). Similarly, there were no statistically significant differences between overall survival of melanoma patients stratified by low and high expression of MTNR1A (107.40 vs. 68.09,  $p = 0.1301$ ) and MTNR1B (93.01 vs. 72.06,  $p = 0.5898$ ).





**Figure 5.** Melatonin and its metabolite-induced drop in melanin content in melanotic MNT-1 melanoma cells. After 72 h incubation with melatonin and its metabolites ( $10^{-3}$  M), transmission electron microscopy (TEM) images were obtained as described in *Materials and Methods*, where the effects of G-coupled membrane receptors (10  $\mu$ M luzindole or 0.1  $\mu$ M 4-P-PDOT) were assessed, and their presence did not affect the collapse of melanogenesis. Bars: 1  $\mu$ m.



**Figure 6.** Kaplan–Meier survival curves and Gehan-Breslow-Wilcoxon test for overall survival of melanoma patients stratified by positive and negative MTNR1A mRNA expression (A), positive and negative MTNR1B mRNA expression (B), low and high MTNR1A mRNA expression (C), low and high MTNR1B mRNA expression (D) as described in *Materials and Methods*.

### 3. Discussion

Melanogenesis at the cellular level is dependent on the formation of melanosomes, which can be produced in varying sizes, numbers, and densities depending on melanin content. At the subcellular level, melanogenesis is dependent on the expression of genes and proteins such as melanogenesis-related enzymes, i.e., tyrosinase (TYR) or tyrosinase-related protein 1 and 2 (TRP1/TRP2). In order to investigate the regulation of melanogenesis, we used melatonin (MEL), its kynurenic ( $N^1$ -acetyl- $N^2$ -formyl-5-methoxykynurenine, AFMK) and indolic derivatives (6-hydroxymelatonin, 6(OH)MEL and 5-methoxytryptamine, 5-MT) in human melanoma cells. In parallel to amelanotic melanoma cells (A375, Sk-Mel-28), we conducted melanin assessments using highly pigmented (melanotic) MNT-1 melanoma cells. This selection has been justified in earlier reports to examine the mechanisms underlying melanogenesis regulation and widely understood pigmentation studies [39–42]. On the other hand, melanoma is one of the fastest increasing cancers worldwide and human melanoma cell lines are valuable models to study the mechanism of melanin synthesis by physiological compounds to improve treatment.

Melatonin displays a variety of biological properties and one of its first described effects was the lightening of skin in amphibians. It was reported that melatonin attenuates melanogenesis in cultured cells from rodent melanomas [38,49]. Other reports revealed



that melatonin in human melanoma cells may both stimulate TYR activity in Sk-Mel-28 cells [47] and decrease melanogenesis in highly pigmented MNT-1 cell lines [50]. Based on this, an explanation for the differential response to melatonin treatment remains unknown and could be multifunctional. One of the reasonable explanations could be the fact that melatonin may be metabolized through indolic and kynurenic pathways targeting the appearance of AFMK, 6(OH)MEL or 5-MT in melanoma cells [51]. To date, it was well-reported that the lightening effects of melatonin on the skin of lower vertebrates and inhibition of pigmentation in some furry animals are well appreciated [4,52]. In our report, we comparatively assessed the effect of MEL, AFMK, 6(OH)MEL and 5-MT where we not only noticed significant attenuation of TYR activity and melanin content but also a reduction of cAMP and downstream MITF responses. This pattern of regulation is in accordance with earlier observations where the inhibition of melanogenesis was demonstrated in melanomas [38,53,54].

Kim et al. [55] showed that melatonin and some metabolites inhibited tyrosinase and the proliferation of cultured human epidermal melanocytes. Comparatively, Hardman et al. [56] have reported that the cutaneous circadian clock elements regulated melanogenesis and melanocyte activities in the human epidermis and HFs. Thus, although there are conflicting results on melatonin functions in human hair and epidermal pigmentation [4,57,58], locally produced melatonin may play a role in the regulation of melanocytic activities via its impact on the peripheral clock. Therefore, the testing of topically applied melatonin during defined circadian windows as an external modulator of intracutaneous clock activity is warranted. Also, topical supplementation of melatonin and its precursors may be beneficial by ameliorating the oxidative environment of vitiligo skin. It should be noted that in enclosed studies, we operated along subphysiological ( $10^{-6}$  M) and pharmacological ( $10^{-3}$  M) doses. This is in line with previous reports where indeed physiological concentrations ( $10^{-8}$ – $10^{-7}$  M) affected proliferation with no evident effects on melanogenesis. Contrarily, higher doses ( $>10^{-6}$ – $10^{-3}$  M) distinctly inhibited melanin synthesis which was additionally confirmed by us using electron paramagnetic resonance [50].

Logan and Weatherhead [59] have confirmed that melatonin leads to the inhibition of melanogenesis independently of applied series of blockers of this process. This may imply that melatonin arrests melanin synthesis via a mechanism which operates at some post-tyrosinase step in the melanin biosynthetic pathway. Slominski and Pruski [38] also reported that melatonin at higher doses acts as a competitive inhibitor rather than acting through melatonin receptors or via binding sites for ligands. Finally, MEL and its metabolites reduced the activity of TYR, which is again in agreement with earlier reports performed in human melanocytes, and this may suggest that these substances can be used as adjuvants in treatment of skin hyperpigmentation or they could attenuate malignant transformation of epidermal melanocytes [55]. Indeed, reduced melanogenesis caused by MEL and its metabolites is in line with applied melanogenesis, i.e.,  $10^{-3}$  M PTU and these results were earlier presented by Brozyna et al. [60] and later confirmed using the same inhibitor [61–63]. Additionally, it should be mentioned that, originally, melatonin's function was to lighten the skin of amphibians by causing the melanin granules within the dermal melanosomes to aggregate around the nucleus of the skin cells in frogs [64]. As a result, melatonin was once used in patients affected by localized hyperpigmented skin in an attempt to reduce the pigmentation in these areas. However, this proved unsuccessful with no skin-lightening effect in humans [65]. The reason is that mammalian melanosomes, unlike those in amphibians, are more or less permanently dispersed and thus melatonin has little effect on its ability to alter pigment aggregation in the skin of mammals. Moreover, it has been suggested that melatonin can be employed effectively to inhibit progress of neoplastic disease in both animals and humans. In our study, we set out to uncover the *modus operandi* of melatonin and its metabolites targeting as potential anti-melanoma add-ons in currently applied therapies. On the other side, McElhinney et al. [57] observed no significant change in skin color among patients receiving melatonin, and no difference relative to controls. Furthermore, the authors concluded that melatonin's

effectiveness in mediating malignant melanoma growth is not related to the suppression of normal melanogenesis.

Nevertheless, our results implicate a logical pattern of regulation of melanogenesis but clearly suggest a greater complexity than we initially expected. For example, Slominski et al. [66], using in vitro and in vivo models, demonstrated that stimulation of melanogenesis leads to increased expression of HIF-1 $\alpha$  and its subsequent translocation into the nucleus. Thus, it is possible that HIF-1 $\alpha$  is induced by the production of intermediates of melanogenesis, including massive generation of reactive oxygen species [4,67,68]. Consequently, the initiation of melanogenesis affects the expression of multiple genes involved in regulating the behavior of melanocytes and melanoma cells, including the metabolic switch to glycolysis coordinated by HIF-1. This accompanies the changes in mitochondrial stress-related genes, immunity, angiogenesis, and cell proliferation. Again, this can be linked to our pharmacological dose ( $10^{-3}$  M) which was used earlier [69]. The authors noticed a reduction of melanin synthesis in presence of  $10^{-3}$  M melatonin with parallel inhibition of the HIF-1 $\alpha$  protein. This indicates the correlation between melatonin, HIF-1, and melanogenesis.

Numerous reports during the last two decades have defined melatonin and its critical role in maintaining the optimal physiology of the mitochondria [70–74]. The beneficial actions of melatonin at the level of the mitochondria are apparent in reference to quenching free radicals, reducing oxidative stress, limiting mitochondria-related apoptosis, maintaining the efficiency of the respiratory chain complexes, and ensuring ample ATP production [75,76]. Moreover, these regulatory actions are not unique to a single cell type but rather are applicable to every cell, plant, and animal containing mitochondria. This extraordinary ability of melatonin to preserve mitochondrial function implies that it reaches these organelles in sufficiently high concentrations to protect them from oxidizing-mediated dysfunction. It is generally accepted that melatonin exerts some of its biological effects through interaction with specific G-protein-coupled seven-transmembrane-domain receptors MT1 and MT2 which we pharmacologically blocked by applying selective antagonists, i.e., luzindole and 4-P-PDOT. We noticed that MEL as well as its kynurenic and indolic metabolites affect the cAMP-PKA-MITF pathway. This tempted us to claim that melatonin and its derivatives act not only on the MT1/MT2-dependent receptors, leading to a decrease in cAMP level and triggering the subsequent drop of MITF and arrest of melanogenesis. This was proof that the receptors for melatonin may be coupled to the suppression of the adenylate cyclase activity via an inhibitory guanosine-nucleotide-binding protein [77]. Accordingly, it should be noted that the occurrence of melatonin-binding sites in B16/F10 mouse melanoma cells has been recently described [78]. It should be added that it has been reported that the soluble adenylyl cyclase (sGC)/cGMP pathway can also increase the cAMP content of cells by cross-talking between the cAMP and cGMP signaling pathways [79–82]. It was shown that cGMP probably inhibits the phosphodiesterase to reduce cAMP degradation and thereby increases the mitochondria cAMP content [83]. Nevertheless, the nature of the cAMP-mediated response uncoupled by melatonin and its metabolites remains a matter of speculation.

## 4. Materials and Methods

### 4.1. Reagents

Melatonin (MEL), its derivatives (5-MT, 6(OH)MEL), 10,000 units penicillin and 10 mg streptomycin per mL in 0.9% NaCl, 4-phenyl-2-propionamidotetralin (4-P-PDOT), agarose, 0.1 M cacodylate buffer, ethanol, glutaraldehyde, HCl, 1 M HEPES solution (pH 7.0–7.6), L-DOPA, luzindole (*N*-acetyl-2-benzyltryptamine), lead citrate, Minimum Essential Medium Eagle (MEM) with low glucose (1000 mg/L), MEM non-essential amino acid solution (NEAA) (100 $\times$ ), NaOH, 1% OsO<sub>4</sub>, *N*-phenylthiourea (PTU), propylene oxide, Triton® X-100, and uranyl acetate were purchased from Sigma (St. Louis, MO, USA). AFMK and 0.05% trypsin/0.53 mM EDTA solution were delivered by Cayman Chemical (Ann Arbor, MI, USA) and Thermo Fisher Scientific (Waltham, MA, USA), respectively. Fetal

bovine serum, 0.05% trypsin/EDTA solution (1×), 1×PBS (pH 7.4), 200 mM L-glutamine solution, and AIM-V™ Medium were supplied by Thermo Fisher Scientific.

#### 4.2. Cell Culture and Treatment

Human melanoma cell lines included human melanotic MNT-1 cells acquired as a gift from Dr. Cédric Delevoye (Institute Curie, Paris, France) and human amelanotic cell models (A375, Sk-Mel-28) (American Type Culture Collection, Manassas, VA, USA). MNT-1 cells were cultured in MEM medium supplemented with 20% (v/v) heat-inactivated fetal bovine serum, 10% (v/v) AIM-V™ Medium, 2 mM L-glutamine solution, 10 mM HEPES solution, 1×NEAA, and 1% (v/v) streptomycin/penicillin solution. A375 and Sk-Mel-28 cells were maintained in MEM medium supplemented with 10% (v/v) heat-inactivated fetal bovine serum, 2 mM L-glutamine, and 1% (v/v) streptomycin-penicillin solution. Cells in the logarithmic growth phase were used in all experiments while 80–90% confluent cell monolayers were harvested with a mixture of 0.05% trypsin/EDTA solution.

Prior to treatment, melanoma cells were allowed to attach to the culture dish by being maintained in MEM culture medium for 24 h. Culture medium was replaced with fresh medium containing MEL, AFMK, 5-MT, 6(OH)MEL versus the control sample, i.e., 0.2% ethanol in culture medium. Ethanol served as a solvent, and was not toxic to the cells after 72 h. Therefore, the tested compounds were dissolved in absolute ethanol and further diluted with 1×PBS to yield  $10^{-2}$  M stock solution. Cells were treated with final concentrations of  $10^{-6}$  and  $10^{-3}$  M for 72 h for the subsequent assessments described below.

Comparatively, a nonselective MT1 and MT2 receptor antagonist or selective MT2 receptor antagonist was used, i.e., luzindole (10 µM) and 4-P-PDOT (0.1 µM), respectively, where cells were pre-incubated for 2 h before the subjected substances.

#### 4.3. DOPA Oxidase Activity of Tyrosinase

MNT-1 cells were seeded on 6-well plates ( $0.3 \times 10^6$  cells/well) and incubated for 72 h with MEL, AFMK, 5-MT, and 6(OH)MEL followed by 2 h pre-incubation with luzindole or 4-P-PDOT. Cells were harvested, washed with 1×PBS, centrifuged at  $1000 \times g$  for 10 min at 4 °C, and lysed with 0.5% Triton® X-100 in 1×PBS on ice. The lysates were subsequently centrifuged at  $16,000 \times g$  for 15 min at 4 °C, resultant supernatant was added to 300 µL of 5 mM L-DOPA in 1×PBS, and were incubated for 1 h at 37 °C. The dopachrome formation was evaluated by measuring absorbance at OD<sub>475 nm</sub> using a BioTek ELx808™ microplate reader (BioTek Instruments, Inc., Winooski, VT, USA), and the results were presented as the percentage of the control sample.

#### 4.4. Melanin Content Assessment

Cells were incubated for 72 h with MEL, AFMK, 5-MT, 6(OH)MEL followed by 2 h pre-incubation with luzindole or 4-P-PDOT as described above. To determine melanin content, cells were harvested, washed with 1×PBS, centrifuged at  $1000 \times g$  for 10 min at 4 °C, and solubilized in 1N NaOH, and incubated for 2 h at 80 °C. Samples were centrifuged at  $12,000 \times g$  for 10 min at room temperature (RT). The absorbances were measured at OD<sub>405 nm</sub> using a BioTek ELx808™ microplate reader, and results were presented as the percentage of the control sample.

#### 4.5. cAMP Direct ELISA Immunoassay

Cells ( $6 \times 10^6$  cells), followed by 72 h culture on 100 mm dishes with subjected compounds, were washed with 1×PBS; 3 mL of 0.1M HCl was added and incubated for 20 min at RT. Cells were scrapped, samples were dissociated up and down until suspension was homogenous, and then centrifuged at  $16,000 \times g$  for 10 min. To determine changes in the cAMP ratio, colorimetric ELISA immunoassay was used (BioVision, Inc., Milpitas, CA, USA). Briefly, 100 µL of sample was mixed with 50 µL neutralizing buffer, 5 µL acetylating mix provided by the supplier, and incubated for 10 min at RT to acetylate cAMP. Next, in order to dilute the acetylation reagents, assay buffer was added, and the resultant sample

was ready to quantify cAMP. Namely, 50  $\mu$ L of test sample was added to the protein G-coated 96-well plate, and subsequently the samples were incubated with 10  $\mu$ L of rabbit anti-cAMP IgG and 10  $\mu$ L of cAMP-HRP for 1 h at RT. Wells were washed with assay buffer, 100  $\mu$ L of HRP developer and 100  $\mu$ L 1 M HCl were added, and the plate was read at OD<sub>450 nm</sub> using a BioTek ELx808<sup>TM</sup> microplate reader. Results were presented as the percentage of the control sample.

#### 4.6. Transmission Electron Microscopy (TEM) Assessment

Cells were seeded on 6-well plates ( $0.3 \times 10^6$  cells/well) and incubated for 72 h with MEL, AFMK, 5-MT, 6(OH)MEL. Next, cells were harvested and centrifuged (700 r.p.m. for 5 min), washed with  $1 \times$  PBS, and fixation was performed for 24 h at 4 °C using 2.5% glutaraldehyde in 0.1 M cacodylate buffer. After that, cells were washed with 0.1 M cacodylate buffer, postfixed in 1% OsO<sub>4</sub> for 2 h at RT, and washed once more using distilled water. Cells were embedded in Poly/Bed<sup>®</sup>812 (Polysciences, Inc., Warrington, PA, USA) after dehydration in graded ethanol (50–100%) and propylene oxide. Ultrathin sections (65 nm thick) were stained with uranyl acetate/lead citrate prior to visualization using the Jeol JEM 2100 HT transmission electron microscope and assessed qualitatively in terms of melanin content.

#### 4.7. RNA Isolation, cDNA Synthesis and PCR

RNA from MNT-1 cell pellet ( $5 \times 10^6$  cells) was extracted according to the manufacturer's instructions using the innuPREP RNA Mini Kit (Analytik Jena, Berlin/Heidelberg, Germany). The amount of RNA was determined using BioPhotometer (Eppendorf, Hamburg, Germany). cDNA synthesis was conducted using RevertAid<sup>TM</sup> First Strand cDNA Synthesis Kit (Thermo Fisher Scientific, Waltham, MA, USA) in presence of oligo (dT) primers as follows: 65 °C for 5 min, 42 °C for 60 min, 70 °C for 5 min in Thermomixer (Eppendorf), and the resultant cDNA was stored at −20 °C prior to PCR reaction. Reactions were carried out by GoTaq<sup>®</sup> PCR Master Mix (Promega GmbH, Mannheim, Germany) in the presence of primers as follows: *MITF* (Forward: 5'-GATGTTAGAGCAGTTCCGCC, Reverse: 5'-AGGATCCATCAAGCCCAAGA; 479 bp), *GAPDH* (Forward: 5'-AAGGTCATCCC TGAGCTGAA, Reverse: 5'-CCCCTCTTCAAGGGGTCTAC; 498 bp). Amplification was performed using 10 min initial denaturation at 95 °C followed by three-step 39-cycling of 60 s at 95 °C (denaturation), 60 s at 60 °C (annealing), and 60 s at 72 °C (extension). PCR products were separated on 1.8% agarose gel containing RedSafe<sup>TM</sup> Nucleic Acid Staining solution (iNtRON Biotechnology, Sangdaewon-Dong, Korea), and afterwards visualized using the Fusion-FX7 UV transilluminator (Vilber GmbH, Eberhardzell, Germany). Samples were standardized by amplification of the housekeeping gene glyceraldehyde phosphate dehydrogenase (GAPDH). DNA-standard O'GeneRuler<sup>TM</sup> 100 bp DNA Ladder Mix from Fermentas International (Burlington, ON, Canada) was used.

#### 4.8. In Silico Assessment

In our analyses, we also examined the prognostic significance of MTNR1A and MTRNR1B mRNA levels in The Cancer Genome Atlas (TCGA) cohort. The survival data and gene expression for the cohort of 445 skin melanoma patients were obtained from [www.cBioPortal.org](http://www.cBioPortal.org) and UCSC Xena Browser (<http://xena.ucsc.edu/>; accessed on 5 June 2023). The RNA-sequencing (RNA-seq) data sets were normalized using the upper-quartile method. The data were split into low-level (with elimination of negative expression) and high-level expression groups according to cut-off points established using the Evaluate Cutpoints R package [84].

#### 4.9. Statistical Analysis

Data were expressed as pooled means +standard error of the mean (S.E.M.) of at least three independent experiments. Results were normalized and expressed as a percentage of the control value. Statistically significant differences between results were determined by

the univariate analysis of variance (ANOVA) or Student's *t*-Test and appropriate post hoc analysis using GraphPad Prism 7.05 software (La Jolla, CA, USA). A *p*-value of less than 0.05 was considered statistically significant.

For in silico assessment, survival curves were plotted using the Kaplan–Meier method, and the differences were evaluated using a Gehan–Breslow–Wilcoxon test.

## 5. Conclusions

In this study, we assessed the effect of melatonin and its kynurenic and indolic derivatives on melanogenesis and the downstream pathway of this process. These results substantiate previous molecular, histochemical and biochemical studies on human cutaneous melatonergic system [22,51,85–90]. They also provide an initial proof of concept that the presence of G-protein-coupled receptors for melatonin and its pharmacological blockage by luzindole or 4-P-PDOT does not affect the resultant decrease in melanogenesis in human melanoma cells. Thus, these findings might provide a convenient experimental model to study the complex relationship between melatonin and the control of mammalian pigmentation. Future work will be devoted to extending this study to the control of melanogenesis in normal melanocytes, whose hormonal regulation might be somewhat different to that of their malignant counterparts.

The reported data also open exciting new possibilities on the in vivo role of local melatonin synthesis and metabolism systems in the regulation of epidermal functions. These would include regulation of its barrier function, epidermal pigmentary system, and anti-carcinogenic activity. Furthermore, regulation of their endogenous production/metabolism can serve as a rational strategy for targeted therapies of melanoma patients. Thus, based on results presented here and hypothesized recently Kleszczyński and Böhm [91] and others [92,93], we are tempted to claim that melatonin, and also its metabolites, may boost commonly used BRAF/MEK inhibitors; however, these investigations still need to be carefully checked using in vitro and in vivo models.

**Author Contributions:** Conceptualization, J.K.S.M. and K.K.; methodology, M.G., A.A.B., E.P., A.W.-G. and K.K.; software, M.G. and K.K.; validation and formal analysis, J.K.S.M., M.G. and K.K.; investigation, J.K.S.M., K.L., M.G., E.P., M.F., A.W.-G. and K.K.; resources, K.K. and K.S.; data curation, J.K.S.M. and K.K.; writing—original draft preparation, its review and editing, J.K.S.M. and K.K.; supervision, J.K.S.M. and K.K.; project administration, K.L., A.T.S., K.S. and K.K. Finally, J.K.S.M., K.L., M.G., A.A.B., E.P., A.W.-G. and K.K. evaluated all the results, made their interpretation, and together with M.F., R.J.R., M.K.T., A.T.S. and K.S. drafted and approved the final version of the manuscript. All authors have read and agreed to the published version of the manuscript.

**Funding:** The present study was supported in some part by the Mobility Grant of Nicolaus Copernicus University postdoctoral fellows under the “Excellence Initiative—Research University” program Emerging Fields (EF)/Sustainable development (SD) funds (4101.00000024) (K.L.), by NIH grants 1R01AR073004-01A1 and R01AR071189-01A1 and by a VA merit grant (no. 1I01BX004293-01A1) (A.T.S.), and by the grants of the German Research Foundation (Deutsche Forschungsgemeinschaft (DFG)): KL2900/3-1 (K.K.), TR156/C05-246807620 (K.S.), SFB1009/B11-194468054 (K.S.), SFB1066/B06-213555243 (K.S.), SFB1450/C06-431460824 (K.S.).

**Institutional Review Board Statement:** Not applicable.

**Informed Consent Statement:** Not applicable.

**Data Availability Statement:** Not applicable.

**Conflicts of Interest:** The authors declare no conflict of interest.

## References

1. Sarkar, D.; Leung, E.Y.; Baguley, B.C.; Finlay, G.J.; Askarian-Amiri, M.E. Epigenetic regulation in human melanoma: Past and future. *Epigenetics* **2015**, *10*, 103–121. [[CrossRef](#)] [[PubMed](#)]
2. Regad, T. Molecular and cellular pathogenesis of melanoma initiation and progression. *Cell. Mol. Life Sci.* **2013**, *70*, 4055–4065. [[CrossRef](#)] [[PubMed](#)]



3. Buscà, R.; Ballotti, R. Cyclic AMP a key messenger in the regulation of skin pigmentation. *Pigment Cell Res.* **2000**, *13*, 60–69. [[CrossRef](#)] [[PubMed](#)]
4. Serre, C.; Busuttill, V.; Botto, J.M. Intrinsic and extrinsic regulation of human skin melanogenesis and pigmentation. *Int. J. Cosmet. Sci.* **2018**, *40*, 328–347. [[CrossRef](#)]
5. Bertolotto, C.; Abbe, P.; Hemesath, T.J.; Bille, K.; Fisher, D.E.; Ortonne, J.P.; Ballotti, R. Microphthalmia gene product as a signal transducer in cAMP-induced differentiation of melanocytes. *J. Cell. Biol.* **1998**, *142*, 827–835. [[CrossRef](#)]
6. Oka, M.; Ogita, K.; Saito, N.; Mishima, Y. Selective increase of the alpha subspecies of protein kinase C and inhibition of melanogenesis induced by retinoic acid in melanoma cells. *J. Investig. Dermatol.* **1993**, *100*, 204S–208S. [[CrossRef](#)]
7. Park, H.Y.; Russakovsky, V.; Ohno, S.; Gilchrist, B.A. The beta isoform of protein kinase C stimulates human melanogenesis by activating tyrosinase in pigment cells. *J. Biol. Chem.* **1993**, *268*, 11742–11749. [[CrossRef](#)]
8. Englaro, W.; Rezzonico, R.; Durand-Clément, M.; Lallemand, D.; Ortonne, J.P.; Ballotti, R. Mitogen-activated protein kinase pathway and AP-1 are activated during cAMP-induced melanogenesis in B-16 melanoma cells. *J. Biol. Chem.* **1995**, *270*, 24315–24320. [[CrossRef](#)]
9. Tada, A.; Pereira, E.; Beitner-Johnson, D.; Kavanagh, R.; Abdel-Malek, Z.A. Mitogen- and ultraviolet-B-induced signaling pathways in normal human melanocytes. *J. Investig. Dermatol.* **2002**, *118*, 316–322. [[CrossRef](#)]
10. Wong, G.; Pawelek, J. Melanocyte-stimulating hormone promotes activation of pre-existing tyrosinase molecules in Cloudman S91 melanoma cells. *Nature* **1975**, *255*, 644–646. [[CrossRef](#)]
11. Halaban, R.; Pomerantz, S.H.; Marshall, S.; Lerner, A.B. Tyrosinase activity and abundance in Cloudman melanoma cells. *Arch. Biochem. Biophys.* **1984**, *230*, 383–387. [[CrossRef](#)] [[PubMed](#)]
12. Wang, Z.H.; Liu, L.P.; Zheng, Y.W. Melanocyte stem cells in skin diseases and their potential in cell-based therapy. *Histol. Histopathol.* **2022**, *37*, 937–953.
13. Li, C.; Kuai, L.; Cui, R.; Miao, X. Melanogenesis and the Targeted Therapy of Melanoma. *Biomolecules* **2022**, *12*, 1874. [[CrossRef](#)] [[PubMed](#)]
14. Grunst, M.L.; Grunst, A.S. Endocrine effects of exposure to artificial light at night: A review and synthesis of knowledge gaps. *Mol. Cell. Endocrinol.* **2023**, *568–569*, 111927. [[CrossRef](#)] [[PubMed](#)]
15. Hardeland, R.; Cardinali, D.P.; Srinivasan, V.; Spence, D.W.; Brown, G.M.; Pandi-Perumal, S.R. Melatonin—A pleiotropic, orchestrating regulator molecule. *Prog. Neurobiol.* **2011**, *93*, 350–384. [[CrossRef](#)] [[PubMed](#)]
16. Lanoix, D.; Lacasse, A.A.; Reiter, R.J.; Vaillancourt, C. Melatonin: The smart killer: The human trophoblast as a model. *Mol. Cell. Endocrinol.* **2012**, *348*, 1–11. [[CrossRef](#)]
17. Suzen, S.; Saso, L. Melatonin as mitochondria-targeted drug. *Adv. Protein Chem. Struct. Biol.* **2023**, *136*, 249–276.
18. Colombage, R.; Singh, M.B.; Bhalla, P.L. Melatonin and Abiotic Stress Tolerance in Crop Plants. *Int. J. Mol. Sci.* **2023**, *24*, 7447. [[CrossRef](#)]
19. Bešlić, I.; Lugović-Mihić, L.; Vrtarić, A.; Bešlić, A.; Škrinjar, I.; Hanžek, M.; Crnković, D.; Artuković, M. Melatonin in Dermatologic Allergic Diseases and Other Skin Conditions: Current Trends and Reports. *Int. J. Mol. Sci.* **2023**, *24*, 4039. [[CrossRef](#)]
20. Kim, T.K.; Atigadda, V.R.; Brzeminski, P.; Fabisiak, A.; Tang, E.K.Y.; Tuckey, R.T.; Reiter, R.J.; Slominski, A.T. Detection of serotonin, melatonin, and their metabolites in honey. *ACS Food Sci. Technol.* **2021**, *1*, 1228–1235. [[CrossRef](#)]
21. Li, Z.; Duan, J.; Chen, L.; Wang, Y.; Qin, Q.; Dang, X.; Zhou, Z. Melatonin enhances the antioxidant capacity to rescue the honey bee *Apis mellifera* from the ecotoxicological effects caused by environmental imidacloprid. *Ecotoxicol. Environ. Saf.* **2022**, *239*, 113622. [[CrossRef](#)] [[PubMed](#)]
22. Carrascal, L.; Nunez-Abades, P.; Ayala, A.; Cano, M. Role of Melatonin in the Inflammatory Process and its Therapeutic Potential. *Curr. Pharm. Des.* **2018**, *24*, 1563–1588. [[CrossRef](#)] [[PubMed](#)]
23. Kikyo, N. Circadian Regulation of Macrophages and Osteoclasts in Rheumatoid Arthritis. *Int. J. Mol. Sci.* **2023**, *24*, 12307. [[CrossRef](#)]
24. Asghari, M.H.; Abdollahi, M.; de Oliveira, M.R.; Nabavi, S.M. A review of the protective role of melatonin during phosphine-induced cardiotoxicity: Focus on mitochondrial dysfunction, oxidative stress and apoptosis. *J. Pharm. Pharmacol.* **2017**, *69*, 236–243. [[CrossRef](#)] [[PubMed](#)]
25. Mayo, J.C.; Sainz, R.M.; González-Menéndez, P.; Hevia, D.; Cernuda-Cernuda, R. Melatonin transport into mitochondria. *Cell. Mol. Life Sci.* **2017**, *74*, 3927–3940. [[CrossRef](#)]
26. Blask, D.E.; Sauer, L.A.; Dauchy, R.T.; Holowachuk, E.W.; Ruhoff, M.S.; Kopff, H.S. Melatonin inhibition of cancer growth *in vivo* involves suppression of tumor fatty acid metabolism *via* melatonin receptor-mediated signal transduction events. *Cancer Res.* **1999**, *59*, 4693–4701.
27. Cos, S.; González, A.; Güzmes, A.; Mediavilla, M.D.; Martínez-Campa, C.; Alonso-González, C.; Sánchez-Barceló, E.J. Melatonin inhibits the growth of DMBA-induced mammary tumors by decreasing the local biosynthesis of estrogens through the modulation of aromatase activity. *Int. J. Cancer.* **2006**, *118*, 274–278. [[CrossRef](#)]
28. Dauchy, R.T.; Blask, D.E.; Dauchy, E.M.; Davidson, L.K.; Tirrell, P.C.; Greene, M.W.; Tirrell, R.P.; Hill, C.R.; Sauer, L.A. Anti-neoplastic effects of melatonin on a rare malignancy of mesenchymal origin: Melatonin receptor-mediated inhibition of signal transduction, linoleic acid metabolism and growth in tissueisolated human leiomyosarcoma xenografts. *J. Pineal Res.* **2009**, *47*, 32–42. [[CrossRef](#)]



29. Girgert, R.; Hanf, V.; Emons, G.; Gründker, C. Membrane bound melatonin receptor MT1 down-regulates estrogen responsive genes in breast cancer cells. *J. Pineal Res.* **2009**, *47*, 23–31. [\[CrossRef\]](#)
30. Bilska, B.; Schedel, F.; Piotrowska, A.; Stefan, J.; Zmijewski, M.; Pyza, E.; Reiter, R.J.; Steinbrink, K.; Slominski, A.T.; Tulic, M.K.; et al. Mitochondrial function is controlled by melatonin and its metabolites in vitro in human melanoma cells. *J. Pineal Res.* **2021**, *70*, e12728. [\[CrossRef\]](#)
31. Xi, S.C.; Siu, S.W.; Fong, S.W.; Shiu, S.Y. Inhibition of androgensensitive LNCaP prostate cancer growth *in vivo* by melatonin: Association of antiproliferative action of the pineal hormone with mt1 receptor protein expression. *Prostate* **2001**, *46*, 52–61. [\[CrossRef\]](#) [\[PubMed\]](#)
32. Dreher, F.; Denig, N.; Gabard, B.; Schwindt, D.A.; Maibach, H.I. Effect of topical antioxidants on UV-induced erythema formation when administered after exposure. *Dermatology* **1999**, *198*, 52–55. [\[CrossRef\]](#) [\[PubMed\]](#)
33. Karumannil, S.; Khan, T.A.; Kappachery, S.; Gururani, M.A. Impact of Exogenous Melatonin Application on Photosynthetic Machinery under Abiotic Stress Conditions. *Plants* **2023**, *12*, 2948. [\[CrossRef\]](#) [\[PubMed\]](#)
34. Jomova, K.; Raptova, R.; Alomar, S.Y.; Alwasel, S.H.; Nepovimova, E.; Kuca, K.; Valko, M. Reactive oxygen species, toxicity, oxidative stress, and antioxidants: Chronic diseases and aging. *Arch. Toxicol.* **2023**, *97*, 2499–2574. [\[CrossRef\]](#)
35. Hardeland, R.; Poeggeler, B. Melatonin and synthetic melatonergic agonists: Actions and metabolism in the central nervous system. *Cent. Nerv. Syst. Agents Med. Chem.* **2012**, *12*, 189–216. [\[CrossRef\]](#)
36. Petrucci, G.; Rizzi, A.; Hatem, D.; Tosti, G.; Rocca, B.; Pitocco, D. Role of Oxidative Stress in the Pathogenesis of Atherothrombotic Diseases. *Antioxidants* **2022**, *11*, 1408. [\[CrossRef\]](#)
37. Slominski, A.T.; Kleszczyński, K.; Semak, I.; Janjetovic, Z.; Zmijewski, M.A.; Kim, T.K.; Slominski, R.M.; Reiter, R.J.; Fischer, T.W. Local melatonergic system as the protector of skin integrity. *Int. J. Mol. Sci.* **2014**, *15*, 17705–17732. [\[CrossRef\]](#)
38. Gao, T.; Li, Y.; Wang, X.; Ren, F. The Melatonin-Mitochondrial Axis: Engaging the Repercussions of Ultraviolet Radiation Photoaging on the Skin's Circadian Rhythm. *Antioxidants* **2023**, *12*, 1000. [\[CrossRef\]](#)
39. Chen, K.G.; Leapman, R.D.; Zhang, G.; Lai, B.; Valencia, J.C.; Cardarelli, C.O.; Vieira, W.D.; Hearing, V.J.; Gottesman, M.M. Influence of melanosome dynamics on melanoma drug sensitivity. *J. Natl. Cancer Inst.* **2009**, *101*, 1259–1271. [\[CrossRef\]](#)
40. Chen, K.G.; Valencia, J.C.; Lai, B.; Zhang, G.; Paterson, J.K.; Rouzaud, F.; Berens, W.; Wincovitch, S.M.; Garfield, S.H.; Leapman, R.D.; et al. Melanosomal sequestration of cytotoxic drugs contributes to the intractability of malignant melanomas. *Proc. Natl. Acad. Sci. USA* **2006**, *103*, 9903–9907. [\[CrossRef\]](#)
41. Kushimoto, T.; Basur, V.; Valencia, J.; Matsunaga, J.; Vieira, W.D.; Ferrans, V.J.; Muller, J.; Appella, E.; Hearing, V.J. A model for melanosome biogenesis based on the purification and analysis of early melanosomes. *Proc. Natl. Acad. Sci. USA* **2001**, *98*, 10698–10703. [\[CrossRef\]](#) [\[PubMed\]](#)
42. Piantelli, M.; Tatone, D.; Castrilli, G.; Savini, F.; Maggiano, N.; Larocca, L.M.; Ranelletti, F.O.; Natali, P.G. Quercetin and tamoxifen sensitize human melanoma cells to hyperthermia. *Melanoma Res.* **2001**, *11*, 469–476. [\[CrossRef\]](#) [\[PubMed\]](#)
43. García-Navarro, A.; González-Puga, C.; Escames, G.; López, L.C.; López, A.; López-Cantarero, M.; Camacho, E.; Espinosa, A.; Gallo, M.A.; Acuña-Castroviejo, D. Cellular mechanisms involved in the melatonin inhibition of HT-29 human colon cancer cell proliferation in culture. *J. Pineal Res.* **2007**, *43*, 195–205. [\[CrossRef\]](#) [\[PubMed\]](#)
44. Blagov, A.V.; Orekhova, V.A.; Sukhorukov, V.N.; Melnichenko, A.A.; Orekhov, A.N. Potential Use of Antioxidant Compounds for the Treatment of Inflammatory Bowel Disease. *Pharmaceuticals* **2023**, *16*, 1150. [\[CrossRef\]](#)
45. Tam, C.W.; Mo, C.W.; Yao, K.M.; Shiu, S.Y.W. Signaling mechanisms of melatonin in antiproliferation of hormone-refractory 22Rv1 human prostate cancer cells: Implications for prostate cancer chemoprevention. *J. Pineal Res.* **2007**, *42*, 191–202. [\[CrossRef\]](#) [\[PubMed\]](#)
46. Kadekaro, A.L.; Andrade, L.N.S.; Floeter-Winter, L.M.; Rollag, M.D.; Virador, V.; Vieira, W.; Castrucci, A.M.L. MT-1 melatonin receptor expression increases the antiproliferative effect of melatonin on S-91 murine melanoma cells. *J. Pineal Res.* **2004**, *36*, 204–211. [\[CrossRef\]](#)
47. Souza, A.V.; Visconti, M.A.; Castrucci, A.M.L. Melatonin biological activity and binding sites in human melanoma cells. *J. Pineal Res.* **2003**, *34*, 242–248. [\[CrossRef\]](#)
48. Bouhoute, M.; Amen, Y.; Bejaoui, M.; Mizushima, A.K.O.; Shimizu, K.; Isoda, H. New Butyroside D from Argan Press Cake Possess Anti-Melanogenesis Effect via MITF Downregulation in B16F10 and HEM Cells. *Int. J. Mol. Sci.* **2022**, *23*, 16021. [\[CrossRef\]](#)
49. Alvarez-Artime, A.; Cernuda-Cernuda, R.; Artime-Naveda, F.; Cepas, V.; Gonzalez-Menendez, P.; Fernandez-Vega, S.; Quiros-Gonzalez, I.; Sainz, R.M.; Mayo, J.C. Melatonin-induced cytoskeleton reorganization leads to inhibition of melanoma cancer cell proliferation. *Int. J. Mol. Sci.* **2020**, *21*, 548. [\[CrossRef\]](#)
50. Kleszczyński, K.; Kim, T.; Bilska, B.; Sarna, M.; Mokrzynski, K.; Stegemann, A.; Pyza, E.; Reiter, R.J.; Steinbrink, K.; Böhm, M.; et al. Melatonin exerts oncostatic capacity and decreases melanogenesis in human MNT-1 melanoma cells. *J. Pineal Res.* **2019**, *67*, e12610. [\[CrossRef\]](#)
51. Kim, T.K.; Kleszczyński, K.; Janjetovic, Z.; Sweatman, T.; Lin, Z.; Li, W.; Reiter, R.J.; Fischer, T.W.; Slominski, A.T. Metabolism of melatonin and biological activity of intermediates of melatonergic pathway in human skin cells. *FASEB J.* **2013**, *27*, 2742–2755. [\[CrossRef\]](#) [\[PubMed\]](#)
52. Zhang, X.; Zhu, J.; Zhang, J.; Zhao, H. Melanocyte stem cells and hair graying. *J. Cosmet. Dermatol.* **2023**, *22*, 1720–1723. [\[CrossRef\]](#) [\[PubMed\]](#)

53. Valverde, P.; Benedito, E.; Solano, F.; Oaknin, S.; Lozano, J.A.; García-Borrón, J.C. Melatonin antagonizes alpha-melanocyte-stimulating hormone enhancement of melanogenesis in mouse melanoma cells by blocking the hormone-induced accumulation of the c locus tyrosinase. *Eur. J. Biochem.* **1995**, *232*, 257–263. [[CrossRef](#)] [[PubMed](#)]
54. Gelmi, M.C.; Houtzagers, L.E.; Strub, T.; Krossa, I.; Jager, M.J. MITF in Normal Melanocytes, Cutaneous and Uveal Melanoma: A Delicate Balance. *Int. J. Mol. Sci.* **2022**, *23*, 6001. [[CrossRef](#)]
55. Kim, T.K.; Lin, Z.; Tidwell, W.J.; Li, W.; Slominski, A.T. Melatonin and its metabolites accumulate in the human epidermis *in vivo* and inhibit proliferation and tyrosinase activity in epidermal melanocytes *in vitro*. *Mol. Cell. Endocrinol.* **2015**, *404*, 1–8. [[CrossRef](#)]
56. Hardman, J.A.; Tobin, D.J.; Haslam, I.S.; Farjo, N.; Farjo, B.; Al-Nuaimi, Y.; Grimaldi, B.; Paus, R. The peripheral clock regulates human pigmentation. *J. Invest. Dermatol.* **2015**, *135*, 1053–1064. [[CrossRef](#)]
57. McElhinney, D.B.; Hoffman, S.J.; Robinson, W.A.; Ferguson, J. Effect of melatonin on human skin color. *J. Investig. Dermatol.* **1994**, *102*, 258–259. [[CrossRef](#)]
58. Slominski, A.; Wortsman, J.; Tobin, D.J. The cutaneous serotonergic/melatonergic system: Securing a place under the sun. *FASEB J.* **2005**, *19*, 176–194. [[CrossRef](#)]
59. Logan, A.; Weatherhead, B. Post-tyrosinase inhibition of melanogenesis by melatonin in hair follicles *in vitro*. *J. Investig. Dermatol.* **1980**, *74*, 47–50. [[CrossRef](#)]
60. Brożyna, A.A.; Van Middlesworth, L.; Slominski, A.T. Inhibition of melanogenesis as a radiation sensitizer for melanoma therapy. *Int. J. Cancer.* **2008**, *123*, 1448–1456. [[CrossRef](#)]
61. Bohnsack, B.L.; Gallina, D.; Kahana, A. Phenothiourea sensitizes zebrafish cranial neural crest and extraocular muscle development to changes in retinoic acid and IGF signaling. *PLoS ONE* **2011**, *6*, e22991. [[CrossRef](#)] [[PubMed](#)]
62. Eom, Y.S.; Shah, F.H.; Kim, S.J. Sulforaphane induces cell differentiation, melanogenesis and also inhibit the proliferation of melanoma cells. *Eur. J. Pharmacol.* **2022**, *921*, 174894. [[CrossRef](#)] [[PubMed](#)]
63. Goelzer Neto, C.F.; do Nascimento, P.; da Silveira, V.C.; de Mattos, A.B.N.; Bertol, C.D. Natural sources of melanogenic inhibitors: A systematic review. *Int. J. Cosmet. Sci.* **2022**, *44*, 143–153. [[CrossRef](#)] [[PubMed](#)]
64. Lerner, A.B.; Case, J.D. Pigment cell regulatory factors. *J. Investig. Dermatol.* **1959**, *32*, 211–221. [[CrossRef](#)]
65. Nordlund, J.J.; Lerner, A.B. The effects of oral melatonin on skin color and on the release of pituitary hormones. *J. Clin. Endocrinol. Metab.* **1977**, *45*, 768–774. [[CrossRef](#)]
66. Slominski, A.; Kim, T.K.; Brożyna, A.A.; Janjetovic, Z.; Brooks, D.L.P.; Schwab, L.P.; Skobowiat, C.; Jóźwicki, W.; Seagroves, T.N. The role of melanogenesis in regulation of melanoma behavior: Melanogenesis leads to stimulation of HIF-1 $\alpha$  expression and HIF-dependent attendant pathways. *Arch. Biochem. Biophys.* **2014**, *563*, 79–93. [[CrossRef](#)]
67. Mun, Y.; Kim, W.; Shin, D. Melanocortin 1 Receptor (MC1R): Pharmacological and Therapeutic Aspects. *Int. J. Mol. Sci.* **2023**, *24*, 12152. [[CrossRef](#)]
68. Touni, A.A.; Shivde, R.S.; Echuri, H.; Abdel-Aziz, R.T.A.; Abdel-Wahab, H.; Kundu, R.V.; Le Poole, I.C. Melanocyte-keratinocyte cross-talk in vitiligo. *Front. Med.* **2023**, *10*, 1176781. [[CrossRef](#)]
69. Park, J.W.; Hwang, M.S.; Suh, S.I.; Baek, W.K. Melatonin down-regulates HIF-1 alpha expression through inhibition of protein translation in prostate cancer cells. *J. Pineal Res.* **2009**, *46*, 415–421. [[CrossRef](#)]
70. Reiter, R.J.; Tan, D.X.; Galano, A. Melatonin: Exceeding Expectations. *Physiology* **2014**, *29*, 325–333. [[CrossRef](#)]
71. Reiter, R.J.; Mayo, J.C.; Tan, D.X.; Sainz, R.M.; Alatorre-Jimenez, M.; Qin, L. Melatonin as an Antioxidant: Under Promises but Over Delivers. *J. Pineal Res.* **2016**, *61*, 259–278. [[CrossRef](#)] [[PubMed](#)]
72. Acuna-Castroviejo, D.; Rahim, I.; Acuna-Fernandez, C.; Fernandez-Ortiz, M.; Solera-Marin, J.; Sayed, R.K.A.; Diaz-Casado, M.E.; Dusanova, I.; Lopez, L.C.; Escames, G. Melatonin, Clock Genes and Mitochondria in Sepsis. *Cell. Mol. Life Sci.* **2017**, *74*, 3965–3988. [[CrossRef](#)] [[PubMed](#)]
73. Reiter, R.J.; Paredes, S.D.; Korkmaz, A.; Jou, M.J.; Tan, D.X. Melatonin Combats Molecular Terrorism at the Mitochondrial Level. *Interdiscip. Toxicol.* **2008**, *1*, 127–149. [[CrossRef](#)]
74. Reiter, R.J.; Tan, D.X.; Rosales-Corral, S.; Galano, A.; Zhou, X.J.; Xu, B. Mitochondria: Central Organelles for Melatonin's Antioxidant and Anti-Aging Actions. *Molecules* **2018**, *23*, 509. [[CrossRef](#)]
75. Acuna-Castroviejo, D.; Lopez, L.C.; Escames, G.; Lopez, A.; Garcia, J.A.; Reiter, R.J. Melatonin-mitochondria Interplay in Health and Disease. *Curr. Top. Med. Chem.* **2011**, *11*, 221–240. [[CrossRef](#)] [[PubMed](#)]
76. Hardeland, R. Melatonin and the Electron Transport Chain. *Cell. Mol. Life Sci.* **2017**, *71*, 3883–3896. [[CrossRef](#)]
77. Morgan, P.J.; Davidson, G.; Lawson, W.; Barrett, P. Melatonin receptors on ovine pars tuberalis: Characterization and autoradiographic localization. *J. Neuroendocrinol.* **1989**, *1*, 1–4. [[CrossRef](#)] [[PubMed](#)]
78. Helton, R.A.; Harrison, W.A.; Kelley, K.; Kane, M.A. Melatonin interactions with cultured murine B16 melanoma cells. *Melanoma Res.* **1993**, *3*, 403–414. [[CrossRef](#)]
79. Bassil, M.; Anand-Srivastava, M.B. Cyclic GMP modulates the expression of Gi protein and adenylyl cyclase signaling in vascular smooth muscle cells. *Cell Biochem. Biophys.* **2007**, *47*, 99–108. [[CrossRef](#)]
80. Algara-Suárez, P.; Espinosa-Tanguma, R. 8Br-cGMP mediates relaxation of tracheal smooth muscle through PKA. *Biochem. Biophys. Res. Commun.* **2004**, *314*, 597–601. [[CrossRef](#)]
81. Roh, S.; Choi, S.; Lim, I. Involvement of protein kinase A in nitric oxide stimulating effect on a BK(Ca) channel of human dermal fibroblasts. *J. Investig. Dermatol.* **2007**, *127*, 2533–2538. [[CrossRef](#)] [[PubMed](#)]

82. Tan, D.X.; Reiter, R.J.; Zimmerman, S.; Hardeland, R. Melatonin: Both a Messenger of Darkness and a Participant in the Cellular Actions of Non-Visible Solar Radiation of Near Infrared Light. *Biology* **2023**, *12*, 89. [\[CrossRef\]](#)
83. Baumann, R.; Blass, C.; Götz, R.; Dragon, S. Ontogeny of catecholamine and adenosine receptor-mediated cAMP signaling of embryonic red blood cells: Role of cGMP-inhibited phosphodiesterase 3 and hemoglobin. *Blood* **1999**, *94*, 4314–4320. [\[CrossRef\]](#) [\[PubMed\]](#)
84. Ogłuszka, M.; Orzechowska, M.; Jędraszka, D.; Witas, P.; Bednarek, A.K. Evaluate Cutpoints: Adaptable continuous data distribution system for determining survival in Kaplan-Meier estimator. *Comput. Methods Programs Biomed.* **2019**, *177*, 133–139. [\[CrossRef\]](#) [\[PubMed\]](#)
85. Gautier, C.; Theret, I.; Lizzo, G.; Ferry, G.; Guénin, S.P.; Boutin, J.A. Why Are We Still Cloning Melatonin Receptors? A Commentary. *Methods Mol. Biol.* **2022**, *2550*, 267–281.
86. Kobayashi, H.; Kromminga, A.; Dunlop, T.W.; Tychsen, B.; Conrad, F.; Suzuki, N.; Memezawa, A.; Bettermann, A.; Aiba, S.; Carlberg, C.; et al. A role of melatonin in neuroectodermal-mesodermal interactions: The hair follicle synthesizes melatonin and expresses functional melatonin receptors. *FASEB J.* **2005**, *19*, 1710–1712. [\[CrossRef\]](#) [\[PubMed\]](#)
87. Pfeffer, M.; von Gall, C.; Wicht, H.; Korf, H.W. The Role of the Melatonergic System in Circadian and Seasonal Rhythms-Insights From Different Mouse Strains. *Front. Physiol.* **2022**, *13*, 883637. [\[CrossRef\]](#)
88. Song, Y.; Wang, S. Melatonin synergistically enhances docetaxel induced endoplasmic reticulum stress to promote apoptosis by suppressing NF- $\kappa$ B activation in cervical cancer. *Med. Oncol.* **2023**, *40*, 219. [\[CrossRef\]](#)
89. Xiong, Y.; Ma, C.; Li, Q.; Zhang, W.; Zhao, H.; Ren, P.; Zhang, K.; Lei, X. Melatonin ameliorates simulated-microgravity-induced mitochondrial dysfunction and lipid metabolism dysregulation in hepatocytes. *FASEB J.* **2023**, *37*, e23132. [\[CrossRef\]](#)
90. Xue, K.H.; Jiang, Y.F.; Bai, J.Y.; Zhang, D.Z.; Chen, Y.H.; Ma, J.B.; Zhu, Z.J.; Wang, X.; Guo, P. Melatonin suppresses Akt/mTOR/S6K activity, induces cell apoptosis, and synergistically inhibits cell growth with sunitinib in renal carcinoma cells *via* reversing Warburg effect. *Redox Rep.* **2023**, *28*, 2251234. [\[CrossRef\]](#)
91. Kleszczyński, K.; Böhm, M. Can melatonin and its metabolites boost the efficacy of targeted therapy in patients with advanced melanoma? *Exp. Dermatol.* **2020**, *29*, 860–863. [\[CrossRef\]](#) [\[PubMed\]](#)
92. Maroufi, N.F.; Vahedian, V.; Hemati, S.; Rashidi, M.R.; Akbarzadeh, M.; Zahedi, M.; Pouremamali, F.; Isazadeh, A.; Taefehshokr, S.; Hajazimian, S.; et al. Targeting cancer stem cells by melatonin: Effective therapy for cancer treatment. *Pathol. Res. Pract.* **2020**, *216*, 152919. [\[CrossRef\]](#) [\[PubMed\]](#)
93. Pathipaka, R.; Thyagarajan, A.; Sahu, R.P. Melatonin as a Repurposed Drug for Melanoma Treatment. *Med. Sci.* **2023**, *11*, 9. [\[CrossRef\]](#) [\[PubMed\]](#)

**Disclaimer/Publisher's Note:** The statements, opinions and data contained in all publications are solely those of the individual author(s) and contributor(s) and not of MDPI and/or the editor(s). MDPI and/or the editor(s) disclaim responsibility for any injury to people or property resulting from any ideas, methods, instructions or products referred to in the content.