

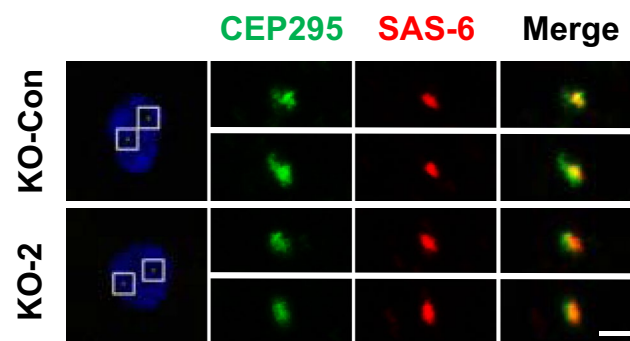
OPEN


# Author Correction: CEP120 interacts with C2CD3 and Talpid3 and is required for centriole appendage assembly and ciliogenesis

 Jih-Jie Tsai, Wen-Bin Hsu , Jia-Hua Liu, Ching-Wen Chang & Tang K. Tang 

 Correction to: *Scientific Reports* <https://doi.org/10.1038/s41598-019-42577-0>, published online 15 April 2019

This Article contains an error in Fig. 2a (KO-2). The panels for KO-2/CEP295 are in the wrong order (up/down images are misplaced). The correct Fig. 2a for KO-2 appears below as Fig. 1.


**Figure 1.**

 **Open Access** This article is licensed under a Creative Commons Attribution 4.0 International License, which permits use, sharing, adaptation, distribution and reproduction in any medium or format, as long as you give appropriate credit to the original author(s) and the source, provide a link to the Creative Commons license, and indicate if changes were made. The images or other third party material in this article are included in the article's Creative Commons license, unless indicated otherwise in a credit line to the material. If material is not included in the article's Creative Commons license and your intended use is not permitted by statutory regulation or exceeds the permitted use, you will need to obtain permission directly from the copyright holder. To view a copy of this license, visit <http://creativecommons.org/licenses/by/4.0/>.

© The Author(s) 2020