

# Determining the Cancer Diagnostic Interval Using Administrative Health Care Data in a Breast Cancer Cohort

Patti A. Groome, PhD<sup>1,2</sup>; Colleen Webber, PhD<sup>3</sup>; Marlo Whitehead, MSc, PStat<sup>2</sup>; Rahim Moineddin, PhD<sup>4</sup>; Eva Grunfeld, MSc, MD, DPhil<sup>4,5</sup>; Andrea Eisen, MD<sup>4,6,7</sup>; Julie Gilbert, PhD<sup>4,6</sup>; Claire Holloway, MD, PhD<sup>4</sup>; Jonathan C. Irish, MSc, MD<sup>4</sup>; and Hugh Langley, MD<sup>1,8</sup>

**PURPOSE** Population-based administrative health care data could be a valuable resource with which to study the cancer diagnostic interval. The objective of the current study was to determine the first encounter in the diagnostic interval and compute that interval in a cohort of patients with breast cancer using an empirical approach.

**METHODS** This is a retrospective cohort study of patients with breast cancer diagnosed in Ontario, Canada, between 2007 and 2015. We used cancer registry, physician claims, hospital discharge, and emergency department visit data to identify and categorize cancer-related encounters that were more common in the three months before diagnosis. We used statistical control charts to define lookback periods for each encounter category. We identified the earliest cancer-related encounter that marked the start of the diagnostic interval. The end of the interval was the cancer diagnosis date.

**RESULTS** The final cohort included 69,717 patients with breast cancer. We identified an initial encounter in 97.8% of patients. Median diagnostic interval was 36 days (interquartile range [IQR], 19 to 71 days). Median interval decreased with increasing stage at diagnosis and varied across initial encounter categories, from 9 days (IQR, 1 to 35 days) for encounters with other cancer as the diagnosis to 231 days (IQR 77 to 311 days) for encounters with cyst aspiration or drainage as the procedure.

**CONCLUSION** Diagnostic interval research can inform early detection guidelines and assess the success of diagnostic assessment programs. Use of administrative data for this purpose is a powerful tool for improving diagnostic processes at the population level.

Clin Cancer Inform. © 2019 by American Society of Clinical Oncology

Creative Commons Attribution Non-Commercial No Derivatives 4.0 License 

## INTRODUCTION

Ineffective cancer diagnostic processes as reflected in system-related diagnostic delay may contribute to a more advanced stage at diagnosis and cause distress to patients.<sup>1-8</sup> The length of the cancer diagnostic interval, defined in the Aarhus statement as the time from a patient's presentation to the health care system to the patient's cancer diagnosis, has been recognized as a determinant of cancer outcomes, including survival.<sup>9-12</sup> Initiatives that are aimed at promoting an earlier cancer diagnosis have targeted care within the diagnostic interval using practice guidelines and diagnostic pathways.<sup>13-17</sup> There is a need to accurately monitor the diagnostic interval and changes in the interval associated with such initiatives. Administrative health care data have the potential to provide such information.

Previous studies that have evaluated the cancer diagnostic interval using administrative data have used

arbitrary lookback periods to identify cancer-related health care encounters, likely leading to interval length inaccuracies.<sup>18,19</sup> These studies also restricted cancer-related encounters to cancer tests and specialist visits, excluding provisional diagnoses or misdiagnoses, which likely resulted in an underestimation of interval length and the activity within the interval.<sup>18-20</sup> Here, we report on an enhanced methodology for calculating the diagnostic interval using administrative data. Our method includes a broader range of cancer-related encounters and an empirical approach for identifying the first cancer-related encounter.

The current report demonstrates the use of this method in a cohort of patients with breast cancer. Our initial developmental work was in oral cavity cancer,<sup>21</sup> and we have also used this method in colorectal cancer.<sup>22,23</sup> Whereas breast cancer can be detected early with screening mammograms, 44% to 52% of patients are diagnosed symptomatically, which increases their risk of late-stage disease.<sup>20,24-26</sup> Characterizing the

## ASSOCIATED CONTENT

### Data Supplement

Author affiliations and support information (if applicable) appear at the end of this article.

Accepted on March 1, 2019 and published at [ascopubs.org/journal/cci](https://ascopubs.org/journal/cci) on May 21, 2019; DOI <https://doi.org/10.1200/CCI.18.00131>

## CONTEXT

### Key Objective

Can routinely collected administrative health data be used to measure the cancer diagnostic interval by identifying the earliest cancer-related health care encounter before diagnosis?

### Knowledge Generated

Use of a data-driven method to identify the earliest cancer-related encounter in the breast cancer diagnostic interval resulted in a median interval of 36 days (interquartile range, 19 to 72 days), with 10% of patients waiting more than 144 days for diagnosis. The observed breast cancer diagnostic interval was longer than previously reported, owing to improved methods to identify the first encounter in the diagnostic interval.

### Relevance

Health systems and health care providers strive to provide timely care for patients diagnosed with cancer. The methods developed and applied in this study offer a generalized approach to characterizing the cancer diagnostic interval using routinely collected health care data that can be applied across cancer sites and jurisdictions with similar data holdings, thereby supporting health systems surveillance and quality improvement initiatives aimed at care within the diagnostic interval.

breast cancer diagnostic interval is a first step toward developing successful strategies to ensure the early recognition and efficient diagnostic evaluation of breast cancer signs and symptoms and to achieving a timely, earlier diagnosis.

## METHODS

The study population was a retrospective cohort of patients with breast cancer who were diagnosed in Ontario, Canada, between January 1, 2007, and December 31, 2015. Patients were excluded if they were missing a data linkage identifier, diagnosed on death certificate only, eligible for Ontario Health Insurance Plan (OHIP) coverage for less than 6 months before diagnosis, younger than age 18 or

older than 105 years at diagnosis, diagnosed with a previous or concurrent—within 6 months of breast cancer diagnosis—cancer, male, not an Ontario resident at diagnosis, or diagnosed with stage 0 cancer.

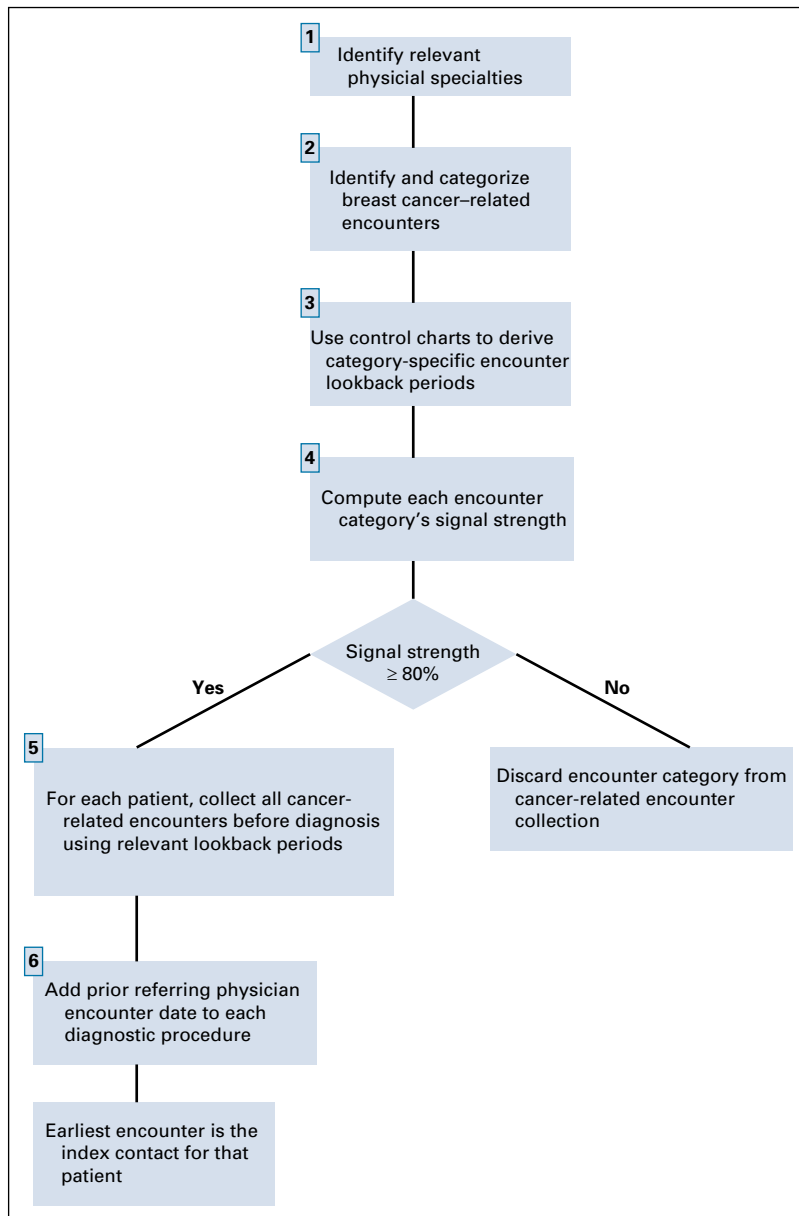
This study used linked administrative databases from ICES.<sup>27</sup> Data sources are listed in [Table 1](#). The following sections describe the steps involved in identifying the initial health care encounter that defines the start of the diagnostic interval. This process is also depicted in [Figure 1](#). We defined the end of the interval as the diagnosis date in the Ontario Cancer Registry (OCR), which is normally the first positive biopsy date.

**TABLE 1.** Administrative Data Sources

Database	Description
Ontario Cancer Registry	Record for all primary cancers in Ontario residents (incidence and mortality). Includes cancer site, diagnosis date, and cancer stage.
Ontario Health Insurance Plan Claims Database	Billing claims made by all Ontario physicians, including in inpatient and outpatient settings. Each claim includes date, one fee code representing the billable service, and one diagnosis code.
CIHI Discharge Abstract Database	Hospital discharge abstracts for Ontario, including administrative, demographic, and clinical data. Each record includes up to 20 intervention codes and 25 diagnosis codes.
CIHI Same Day Surgery Database	All same-day surgery or procedure stays at all Ontario day surgery clinics/institutions. Includes administrative, demographic, and clinical data. Each record includes up to 20 intervention codes and 25 diagnosis codes.
CIHI National Ambulatory Care Reporting System	All emergency department visits in Ontario. Includes administrative, demographic, and clinical data. Each record includes up to 10 intervention codes and 10 diagnosis codes.
Ontario Breast Screening Program Database	Data for women screened through the Ontario Breast Cancer Screening Program, including screening date and final result of screening.
ICES Physician Database	Yearly data for all active physicians in Ontario, including physician demographics, specialty, location, and activity.
Registered Persons Database	Demographic information on all Ontario residents who have ever received an OHIP health card number. Records include date of birth, sex, postal code, OHIP eligibility dates, and health care contact measures.

Abbreviations: CIHI, Canadian Institute for Health Information; OHIP, Ontario Health Insurance Plan.

**FIG 1.** Steps to identifying the initial cancer-related health care encounter.



### Step One: Identifying Relevant Physician Specialties

We determined the physician specialties, the encounters of which we would be examining in Step Two, by identifying those specialties seen by patients more often in the 3 months immediately preceding diagnosis compared with the more than 3 to 15 months before. We used OHIP billing claims, and specialty selection was also guided by clinical advice to ensure face validity.

### Step Two: Identifying Cancer-Related Health Care Encounters

We identified diagnoses and procedures on OHIP claims that occurred more often in the 3-month period preceding diagnosis compared with the more than 3- to 12-month period before. We examined all encounters with physicians whose specialties were identified in Step One. We

categorized these encounters by grouping similar diagnoses and similar procedures. This work was reviewed by a clinician for face validity.

### Step Three: Determining Each Encounter Category's Lookback Period

We used cumulative sum control charts to identify the lookback period for each encounter category.<sup>28-30</sup> We defined lookbacks across three time periods—diagnosed in 2007 to 2009, 2010 to 2012, or 2013 to 2015—to account for lookback variations across this 9-year study.

All cancer-related encounters were captured in the 15 months before diagnosis regardless of physician specialty. We also captured equivalent Canadian Institute for Health Information hospital discharge and ambulatory clinic encounters as well as National Ambulatory Care

Reporting System emergency department encounters not already identified in OHIP.

For each encounter category, control charts compared the weekly encounter frequencies for each of the 52 weeks before diagnosis with the background encounter frequency. This background frequency was the mean weekly encounter frequency in the more than 12- to 15-month period before cancer diagnosis. We used four established rules to identify a signal in the control charts<sup>30</sup>:

Rule 1: Any weekly count more than three standard deviations greater than the background frequency

Rule 2: Two of three consecutive weekly counts greater than two standard deviations more than the background frequency

Rule 3: Four of five consecutive weekly counts greater than one standard deviation more than the background frequency

Rule 4: Eight consecutive weekly counts more than the background encounter frequency

The encounter category-specific lookback period was the furthest week from diagnosis that had a signal. The lookback period stopped once a single week had no signal, even if the signal re-emerged further back in time. We calculated four lookback period cut points for each encounter category using rules one to four, one to three, one and two, and one only, with each providing an increasingly shorter lookback period.

#### **Step Four: Assessing Each Encounter Category's Signal Strength**

We computed a signal strength measure for each lookback period by calculating the proportion of encounters in the lookback period that exceeded the expected number on the basis of the background mean weekly frequency. Signal strength was computed for all four lookback period cut points, stopping once a signal strength of 80% or greater was achieved. If a signal strength of 80% or greater could not be achieved, that encounter category was excluded from our collection of cancer-related encounters.

#### **Step Five: Collecting All Prediagnostic Cancer-Related Encounters for Each Patient**

For each patient, we now had captured all cancer-related encounters and their dates. Mammogram-related encounters were categorized as screening or diagnostic on the basis of the procedure codes, when possible. Those with nonspecific codes were categorized using subsequent procedures. If the mammogram was followed by another screening or diagnostic mammogram or a breast ultrasound, it was categorized as a screening mammogram, otherwise it was categorized as a diagnostic mammogram.

#### **Step Six: Adding Referring Doctor Encounters**

We identified the referring physician for all nonscreening procedure-based encounters, then looked for a diagnosis-based encounter with that physician before the procedure.

If there was no such visit, we identified the last visit with that referring physician for any reason in the 6 months before the procedure date. This referring physician encounter was then assigned to the associated procedure encounter record for the purpose of identifying the index contact date. For those procedure-based encounters with no referring doctor identified or no visit to the referring doctor found, we assigned an x.5 category code—where x indicates the category number—to the procedure encounter category number, and we used the procedure date on record when identifying the earliest encounter.

#### **Initial Health Care Encounter Identification and Calculation of the Diagnostic Interval**

We identified each patient's earliest breast cancer-related encounters from all encounters collected. If there was more than one encounter on the index contact date, we applied a hierarchy (Table 2) to assign the index contact encounter type. Diagnostic interval was calculated as the time from the index contact to diagnosis date, with a minimum of 1 day.

We describe the diagnostic interval distribution and report the proportion of patients whose interval was fewer than 7 weeks. This is in accordance with a Canadian timeliness benchmark that 90% of patients with screen-detected breast cancer who require a tissue biopsy should be diagnosed within 7 weeks.<sup>31</sup>

## **RESULTS**

The final cohort had 69,717 patients (Data Supplement). Mean age was 61.1 years (standard deviation, 13.8 years). Cancer stage distribution was as follows: stage I, 40.0%; stage II, 36.7%; stage III, 13.5%; stage IV, 4.7%; and unknown, 5.0%.

Relevant physician specialties included family medicine, general surgery, internal medicine, and diagnostic radiology. Encounters with these specialties were used to define the cancer-related encounter categories listed in Table 2 (see Data Supplement for OHIP and CIHI category coding). Diagnosis-based encounters—categories 1 to 7—included those that were overtly cancer-related, such as breast and other related cancers, and breast-related provisional diagnoses, such as breast cysts. Diagnostic encounter categories 1 and 2 can indicate either a pathologically confirmed diagnosis of breast cancer or a physician's suspicion of breast cancer based on the patient's signs or symptoms. Procedure-based encounters—categories 8 to 22—included consults, breast imaging procedures, and surgical procedures.

Final lookback periods and corresponding signal strength values for each encounter category are listed in Table 2. Most encounter categories contained intracategory variations in the lookback periods across the three time periods, with differences of as much as 31 weeks (category 9, cyst aspiration or drainage). Intercategory variation ranged from a low of 6 weeks (lymph system-related conditions) to

**TABLE 2.** Breast Cancer–Related Health Care Encounter Lookback Periods

Encounter Category	Cohort Divided in Three Groups (2007-2009/2010-2012/2013-2015)			
	Lookback Period, Weeks	Signal Strength, %	Median Weekly Encounter Frequency in 52 Weeks Before Diagnosis	Hierarchy
1. Breast cancer	31/37/43	96.9/95.6/96.8	22.5/32.5/31	3
2. Other related cancer	7/10/10	85.3/81.5/82.2	22/22.5/24	4
3. Benign neoplasm/CIS	38/29/22	90.3/91.8/92.2	39.5/40.5/48	5
4. Breast cyst, cystic disease, abscess, hypertrophy, other	35/40/37	92.6/92.7/92.9	72/59/56	6
5. Lymph system–related conditions	13/6/12	80.0/81.6/84.5	3/3/4	7
6. Infectious/inflammatory conditions, not breast or lymph	—*/—/—	< 80.0/< 80.0/< 80.0	27/30.5/30	—
7. Signs and symptoms, not breast	—/—/—	< 80.0/< 80.0/< 80.0	460.5/504/521.5	—
8. Breast biopsy with or without ultrasound guidance	31/32/28	97.8/97.9/97.3	36.5/45/54.5	13
9. Cyst aspiration or drainage	21/23/52	96.0/96.8/96.0	4/3/3	12
10. Mastectomy	19/16/13	98.6/98.6/98.2	4/3/3	14
11. Surgical consult with no procedure	24/24/24	92.0/89.7/89.1	46/48/49	11
12. Bilateral mammography	18/17/17	89.5/90.6/94.7	56.5/44.5/26	—
13. Diagnostic mammography and related procedures	36/23/33	94.0/95.4/94.8	55/63/64	8
14. Screening mammography	NA†/22/12	NA/94.6/83.9	NA/10.5/52	2
15. Breast ultrasound	35/22/35	94.3/96.2/94.4	65/68/77	9
16. Breast MRI	17/21/18	94.3/96.5/92.6	2/4.5/10	15
17. Other X-ray, including CT	—/—/—	< 80.0/< 80.0/< 80.0	252.5/272/279	—
18. Other ultrasound	11/19/14	87.7/84.4/88.2	36/53.5/63.5	10
19. Other MRI	11/—/—	81.2/< 80.0/< 80.0	51.5/72.5/89.5	16
20. Nuclear medicine	13/12/13	85.2/88.7/87.8	8.5/7/6.5	17
21. Internal medicine consult with cancer-related referral	—/—/—	< 80.0/< 80.0/< 80.0	51/49/45	—
22. OBSP abnormal breast screening	44/45/37	99.8/99.6/99.7	7.5/8/8	1

Abbreviations: CIS, carcinoma in situ; CT, computed tomography; MRI, magnetic resonance imaging; NA, not applicable; OBSP, Ontario Breast Screening Program.

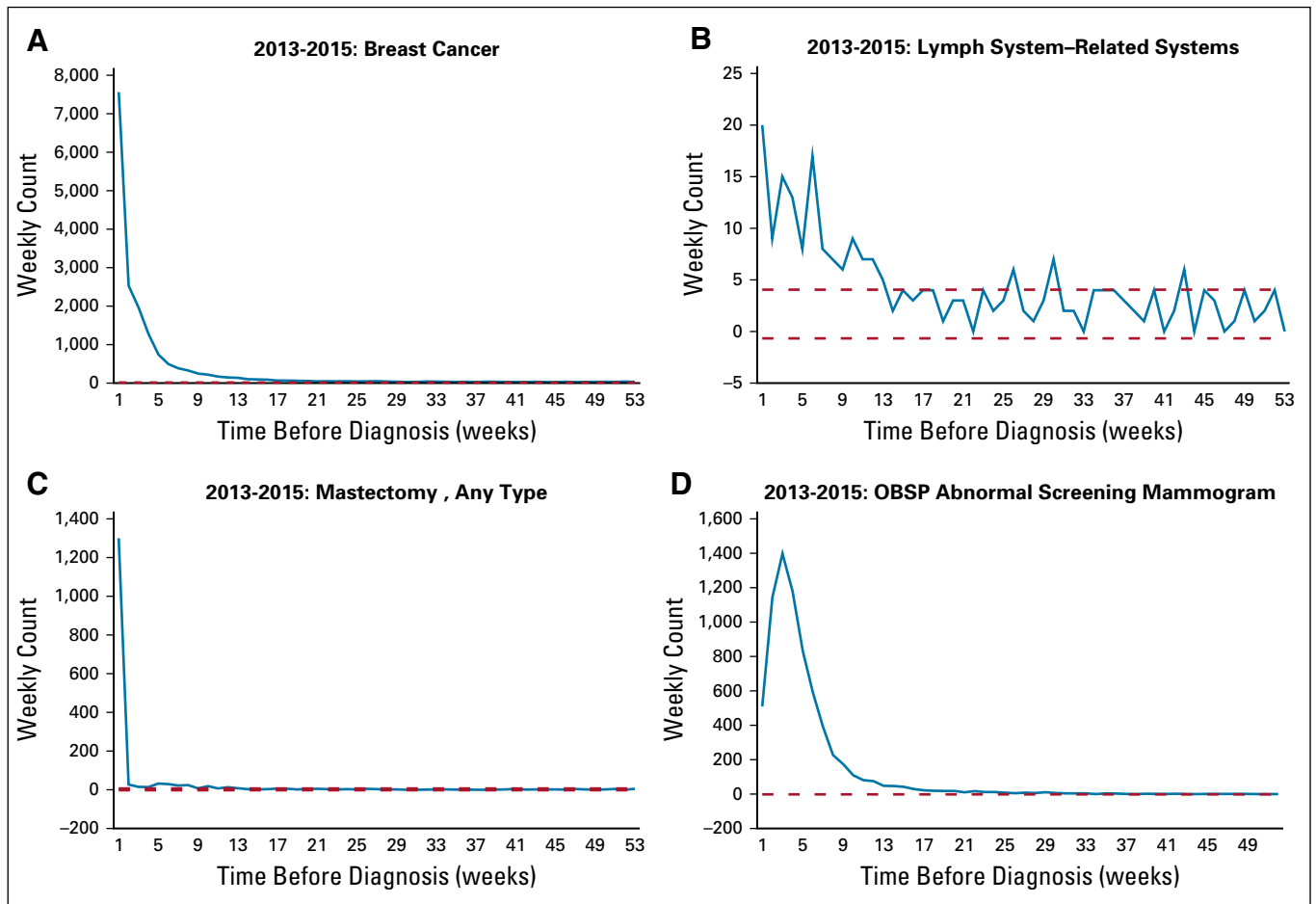
\*Lookback period that achieved a signal strength of 80.0% or greater could not be defined.

†Codes used to identify category 14 encounters were not in use in 2007 to 2009.

a high of 52 weeks (cyst aspiration or drainage). Four encounter categories—6, 7, 17, and 21—were discarded because they did not achieve 80% signal strength. Encounter category 19 (other magnetic resonance imaging) only achieved 80% signal strength among patients who were diagnosed in 2007 to 2009, so it was excluded in the other years. Median weekly encounter frequency in the 52 weeks before diagnosis varied across encounter categories, with the lowest among breast magnetic resonance imaging, cyst aspiration and drainage, and mastectomy, and the highest among other x-ray and signs and symptoms, not breast-related.

Figure 2 presents control chart examples for four encounter categories in patients who were diagnosed in 2013 to 2015.

In each control chart, there is an increase in the encounter frequency closer to diagnosis; however, the rate of increase varied across encounter categories. The decrease in Ontario Breast Screening Program abnormal screening immediately preceding diagnosis is likely a result of the time needed to complete diagnostic evaluations after an abnormal screen. Whereas the shape of the control charts looks similar across encounter categories, y-axis frequencies vary considerably. For lymph system–related conditions, there were no more than 20 encounters per week in the entire cohort. Breast cancer diagnosis encounters had the highest weekly frequency, with more than 7,500 patients in the week immediately preceding the diagnosis date in the OCR.



**FIG 2.** Control charts for four encounter categories: (A) Breast cancer, (B) lymph system–related conditions, (C) mastectomy, and (D) Ontario Breast Screening Program (OBSP) abnormal screening mammogram. Blue lines plot weekly encounter count in 1 year before diagnosis. Red dashed lines plot the background period confidence limits.

We identified an index contact for 68,220 patients (97.8%) in the final cohort. This group was similar to the whole cohort with regard to age and stage (results not shown). The diagnostic interval distribution—overall and by stage group—is listed in Table 3. Median diagnostic interval was 36 days, with an interquartile range (IQR) of 19-71 days. Ninety percent of patients were diagnosed within 144 days. Diagnostic interval was shorter with more advanced disease, with a median

interval of 20 days (IQR, 5-50 days) in stage IV disease compared with 41 days (IQR, 22-80 days) in stage I disease. Overall, 49.9% of patients were diagnosed within 7 weeks of their index contact date. Patients with stage IV disease were most likely to meet the 7-week benchmark at 65.9%, whereas among those with stage I, only 43.7% met the benchmark.

As shown in Table 4, the most common index encounter was an abnormal Ontario Breast Screening Program mammogram,

**TABLE 3.** Diagnostic Interval Distribution in Days, Overall and Stratified by Stage at Diagnosis

Stage	No.	Median	IQR	90th Percentile	Percent Meeting 7-Week Benchmark
Overall	68,220	36	19-71	144	49.9
Stage at diagnosis					
I	27,651	41	22-80	151	43.7
II	25,183	32	18-64	131	53.7
III	9,213	29	15-61	137	57.3
IV	3,012	20	5-50	120	65.9
Unknown	3,161	51	22-115	202	38.1

Abbreviation: IQR, interquartile range.

accounting for 25.8% of the cohort, followed by 17.8% in the breast cyst, cystic disease, abscess, hypertrophy, other diagnostic category, which is commonly used for breast lump presentations. The shortest median intervals were observed in patients with a breast cancer or other cancer diagnosis on their index contact, at 15 days (IQR, 2-40 days) and 9 days (IQR, 1-35 days), respectively. The longest median interval, 231 days, was observed in the small group whose index contact involved cyst aspiration or drainage and for whom no referring physician visit could be identified.

## DISCUSSION

We used an empirical approach to identify the first health care encounter leading to a breast cancer diagnosis. This is a necessary first step in computing the diagnostic interval

and characterizing diagnostic pathways. Our principal data sources were the OCR to identify the cohort and their diagnosis date and OHIP claims data to identify breast cancer-related encounters using diagnostic and procedure codes. We used control charts to identify lookback periods for cancer-related encounter capture, with patients providing their own background encounter rates.<sup>28-30</sup> We included only those encounters that achieved an 80% or greater signal strength, which led to the exclusion of four encounter categories. The earliest cancer-related encounter identified for each patient marked the start of the patient's breast cancer diagnostic interval.

The control chart results highlight the importance of using encounter-specific lookback periods when identifying the

**TABLE 4.** Diagnostic Interval Distribution in Days, by Index Contact Encounter Category

Index Contact Encounter Category	No.	Median	IQR	90th Percentile
Breast cancer	3,531	15	2-40	140
Other related cancers	485	9	1-35	51
Benign neoplasm/CIS	4,191	32	16-72	154
Breast cyst, cystic disease, abscess, hypertrophy, other	12,168	30	16-63	169
Lymph system-related conditions	92	29.5	15-54.5	73
Breast biopsy with or without ultrasound guidance, with referral	741	117	38-190	241
Breast biopsy with or without ultrasound guidance, no referral	534	135	87-177	200
Cyst aspiration or drainage, with referral	46	123.5	29-276	354
Cyst aspiration or drainage, no referral	21	231	77-311	353
Mastectomy, with referral	10	21.5	6-54	173
Mastectomy, no referral	9	26	24-30	48
Surgical consult with no procedure, with referral	1,668	96	46-150.5	186
Surgical consult with no procedure, no referral	295	89	44-134	156
Diagnostic mammography and related procedures, with referral	11,386	51	27-98	163
Diagnostic mammography and related procedures, no referral	820	27	9-97	187.5
Screening mammography	4,614	34	19-57	84
Breast ultrasound, with referral	7,779	49	28-101	187
Breast ultrasound, no referral	781	36	15-93	186
Breast MRI, with referral	77	106	57-170	217
Breast MRI, no referral	37	33	20-65	112
Other ultrasound, with referral	779	77	47-107	142
Other ultrasound, no referral	225	57	29-81	112
Other MRI, with referral	81	73	46-94	122
Other MRI, no referral	15	52	32-61	69
Nuclear medicine, with referral	174	42.5	22-71	93
Nuclear medicine, no referral	22	23	8-39	59
OBSP abnormal breast screening	17,639	28	17-45	72

Abbreviation: CIS, carcinoma in situ; CT, computed tomography; IQR, interquartile range; MRI, magnetic resonance imaging; OBSP, Ontario Breast Screening Program.

index contact, with encounter lookback periods varying from 6 to 52 weeks. Using a single lookback period for all encounters could have erroneously included or excluded relevant encounters from the interval. Although we identified 18 categories of cancer-related encounters, 80.5% of the cohort had an index contact that was either symptom related or for mammography. Other encounter categories more often reflected activity that occurred after the index encounter. The occurrence of mastectomy within the diagnostic interval may reflect errors in the OCR diagnosis date when mastectomy-based pathology reports were used to identify the diagnosis date.

The median diagnostic interval was slightly more than 1 month, and for 10% of patients it was more than 5 months. The diagnostic interval observed in this study is longer than that reported in previous research.<sup>25,32-34</sup> The difference may be a result, in part, of differences in the interval definition<sup>9</sup> and/or methodologic differences in identifying the earliest cancer-related encounter. For instance, some of our previous work that measured the breast cancer diagnostic interval in Ontario in 2011 using ICES data observed a shorter diagnostic interval, particularly at the tail of the distribution, with a median of 32 days, a 75th percentile of 60 days, and a 90th percentile of 107 days.<sup>25</sup> The index contact in that study was defined as the earliest of one of six breast cancer–related procedures or emergency department visits, taking the referring physician visit when available. This definition more closely reflects the Aarhus secondary care interval, which measures the time from specialist referral to diagnosis, rather than the diagnostic interval.<sup>9</sup> Our approach to identifying the diagnostic interval index contact—using symptom- and procedure-related visits and cancer-specific encounters as well as encounters that reflect provisional diagnosis or misdiagnoses—captures encounters that occurred before and after the first specialist referral, thereby measuring the entire diagnostic interval and all relevant activity within that interval. In particular, for many symptomatic patients, our longer interval reflects the added duration of the primary care interval.<sup>9</sup>

A protracted cancer diagnostic interval may result in more advanced disease at diagnosis, necessitating more invasive treatment and contributing to poorer survival.<sup>1,35,36</sup> A systematic review examining the relation between the diagnostic interval and cancer outcomes across 27 cancer sites found that an expedited diagnosis can promote earlier cancer detection and improved survival, with the strongest evidence for this relationship coming from breast, head and neck, colorectal, and testicular cancers and melanoma.<sup>4</sup> Inconsistent results in that review were attributed to interval definition differences as well as the waiting time paradox, a phenomenon whereby patients with more advanced disease and poorer outcomes often have shorter diagnostic intervals because of patient triaging on the basis of symptom severity.<sup>9,37,38</sup> Because of the waiting time paradox and the need to provide a comprehensive workup, the

relation between a shorter diagnostic interval and better outcomes is not straightforward; however, holding all else constant, the literature supports activities that aim to expedite the diagnostic interval to improve outcomes.

This study has a number of strengths. It builds on previous efforts with the incorporation of provisional and less-specific diagnoses as cancer-related encounters. The control chart methodology avoids the use of arbitrary lookback periods to identify relevant encounters, thereby ensuring that only those encounters related to the diagnosis of the cancer are captured. All decisions regarding the selection of cancer-related encounters and lookback periods were made to ensure a conservative estimate of the diagnostic interval. This methodology lends itself to surveillance and quality improvement efforts as it uses existing, linked administrative data and can be translated across jurisdictions and cancer sites, with previous success in adapting these methods to studies of the diagnostic interval in colorectal and oral cavity cancer.<sup>21-23</sup> Our efforts to refine the encounter category lookback periods by allowing them to vary over time ensure that this methodology is sensitive to changes in the diagnostic interval over time. The method has the added benefit of providing a complete account of diagnostic activity, which allows for the study of diagnostic processes as well as the length of the diagnostic interval.<sup>39</sup>

The main weakness of this work was the missing encounter data for referring physician visits. Most breast cancer–related procedures would have required a referral, and our inability to capture the referring physician visit could result in an underestimate of the diagnostic interval length. This problem affects, at most, 4% of the cohort. We were unable to examine whether the lookback periods varied within the 3-year diagnosis periods, as shorter periods did not provide a sufficient number of encounters to identify signal in the control charts. We have not validated these intervals with another data source, such as medical charts. We attempted such a validation in oral cavity cancer, but found the treating medical charts to be incomplete for this purpose.

This study offers a generalized methodology with which to measure and characterize the cancer diagnostic interval using administrative data. Algorithms developed from this methodology could be used for ongoing program surveillance and evaluation. For example, we have been collaborating with Cancer Care Ontario to incorporate this approach into their surveillance activities and for use in the assessment of their diagnostic assessment programs.

Our results indicate a prolonged diagnostic interval for patients with breast cancer, with a median interval of more than 1 month. Studies such as this can inform the development of standardized diagnostic pathways and empirically based early detection guidelines. Integrating the evaluation of the diagnostic interval into cancer system performance assessments offers a first step in improving the effectiveness and efficiency of the cancer diagnostic interval.



## AFFILIATIONS

<sup>1</sup>Queen's University, Kingston, Ontario, Canada

<sup>2</sup>ICES Queen's, Kingston, Ontario, Canada

<sup>3</sup>Ottawa Hospital Research Institute, Ottawa, Ontario, Canada

<sup>4</sup>University of Toronto, Toronto, Ontario, Canada

<sup>5</sup>Ontario Institute for Cancer Research, Toronto, Ontario, Canada

<sup>6</sup>Cancer Care Ontario, Toronto, Ontario, Canada

<sup>7</sup>Sunnybrook Health Sciences Centre, Toronto, Ontario, Canada

<sup>8</sup>South East Regional Cancer Program, Kingston, Ontario, Canada

Preprint version available on bioRxiv.

## CORRESPONDING AUTHOR

Patti A. Groome, PhD, Division of Cancer Care and Epidemiology, Queen's Cancer Research Institute, 10 Stuart St, Level 2, Kingston, ON K7L 3N6, Canada; e-mail: groomep@queensu.ca.

## PRIOR PRESENTATION

Presented in at the Canadian Cancer Research Conference, Montreal, QC, Canada, November 8-10, 2015; and at Cancer Care Ontario Research Day, Toronto, ON, Canada, April 12, 2018.

## SUPPORT

Funded by grants from the Canadian Institutes of Health Research and Cancer Care Ontario. Supported by ICES, which is funded by an annual grant from the Ontario Ministry of Health and Long-Term Care.

## AUTHOR CONTRIBUTIONS

**Conception and design:** Patti A. Groome, Colleen Webber, Eva Grunfeld, Andrea Eisen, Julie Gilbert, Claire Holloway, Jonathan C. Irish, Hugh Langley

**Collection and assembly of data:** Patti A. Groome, Colleen Webber, Marlo Whitehead, Eva Grunfeld

**Data analysis and interpretation:** All authors

**Manuscript writing:** All authors

**Final approval of manuscript:** All authors

**Accountable for all aspects of the work:** All authors

## AUTHORS' DISCLOSURES OF POTENTIAL CONFLICTS OF INTEREST

The following represents disclosure information provided by authors of this manuscript. All relationships are considered compensated.

Relationships are self-held unless noted. I = Immediate Family Member, Inst = My Institution. Relationships may not relate to the subject matter of this manuscript. For more information about ASCO's conflict of interest policy, please refer to [www.asco.org/rwc](http://www.asco.org/rwc) or [ascopubs.org/jco/site/ifu](http://ascopubs.org/jco/site/ifu).

**Andrea Eisen**

**Other Relationship:** Cancer Care Ontario

No other potential conflicts of interest were reported.

## ACKNOWLEDGMENT

The opinions, results, and conclusions reported in this article are those of the authors and are independent from the funding sources. No endorsement by ICES or the Ontario Ministry of Health and Long-Term Care is intended or should be inferred. These data sets were linked using unique encoded identifiers and analyzed at ICES. Parts of this material are based on data and/or information compiled and provided by Canadian Institute for Health Information (CIHI). However, the analyses, conclusions, opinions, and statements expressed in the material are those of the author(s) and not necessarily those of CIHI. Parts of this material are based on data and information provided by Cancer Care Ontario (CCO). The opinions, results, views, and conclusions reported in this paper are those of the authors and do not necessarily reflect those of CCO. No endorsement by CCO is intended or should be inferred.

## REFERENCES

- Richards MA: The size of the prize for earlier diagnosis of cancer in England. *Br J Cancer* 101:S125-S129, 2009 (suppl 2)
- Gospodarowicz M, O'Sullivan B, Sobin LH: *Prognostic Factors in Cancer* (ed 3). New Jersey, NJ, John Wiley & Sons, 2006
- Ferrante JM, Chen PH, Kim S: The effect of patient navigation on time to diagnosis, anxiety, and satisfaction in urban minority women with abnormal mammograms: A randomized controlled trial. *J Urban Health* 85:114-124, 2008
- Neal RD, Tharmanathan P, France B, et al: Is increased time to diagnosis and treatment in symptomatic cancer associated with poorer outcomes? Systematic review. *Br J Cancer* 112:S92-S107, 2015 (suppl 1)
- Macleod U, Mitchell ED, Burgess C, et al: Risk factors for delayed presentation and referral of symptomatic cancer: Evidence for common cancers. *Br J Cancer* 101:S92-S101, 2009 (Suppl 2)
- Montgomery M, McCrone SH: Psychological distress associated with the diagnostic phase for suspected breast cancer: Systematic review. *J Adv Nurs* 66:2372-2390, 2010
- Brocken P, Prins JB, Dekhuijzen PNR, et al: The faster the better?—A systematic review on distress in the diagnostic phase of suspected cancer, and the influence of rapid diagnostic pathways. *Psychooncology* 21:1-10, 2012
- Liao M-N, Chen M-F, Chen S-C, et al: Uncertainty and anxiety during the diagnostic period for women with suspected breast cancer. *Cancer Nurs* 31:274-283, 2008
- Weller D, Vedsted P, Rubin G, et al: The Aarhus statement: Improving design and reporting of studies on early cancer diagnosis. *Br J Cancer* 106:1262-1267, 2012
- Butler J, Foot C, Bomb M, et al: The International Cancer Benchmarking Partnership: An international collaboration to inform cancer policy in Australia, Canada, Denmark, Norway, Sweden and the United Kingdom. *Health Policy* 112:148-155, 2013
- Weller D, Vedsted P, Anandan C, et al: An investigation of routes to cancer diagnosis in 10 international jurisdictions, as part of the International Cancer Benchmarking Partnership: Survey development and implementation. *BMJ Open* 6:e009641, 2016
- Rose PW, Rubin G, Perera-Salazar R, et al: Explaining variation in cancer survival between 11 jurisdictions in the International Cancer Benchmarking Partnership: A primary care vignette survey. *BMJ Open* 5:e007212, 2015
- Cancer Care Ontario: Colorectal cancer diagnosis pathway map 2018. <https://www.cancercareontario.ca/sites/cocancercare/files/assets/DPMC Colorectal Diagnosis.pdf>
- Borugian MJ, Kan L, Chu CCY, et al: Facilitated "fast track" referral reduces time from abnormal screening mammogram to diagnosis. *Can J Public Health* 99:252-256, 2008
- Del Giudice ME, Vella ET, Hey A, et al: Guideline for referral of patients with suspected colorectal cancer by family physicians and other primary care providers. *Can Fam Physician* 60:717-723, e383-e390, 2014

16. Cancer Care Ontario: Oropharyngeal squamous cell cancer diagnosis pathway map 2017. <https://www.cancercareontario.ca/sites/ccocancercare/files/assets/DPMOropharyngealSquamousDiagnosis.pdf>
17. Cancer Care Manitoba: Work-up of suspected breast cancer 2015. [https://www.cancercare.mb.ca/export/sites/default/For-Health-Professionals/galleries/files/diagnostic-pathway-files/breast-diagnostic-pathway-files/IN60\\_BC-Revised-FullPath\\_02-02-2016.pdf](https://www.cancercare.mb.ca/export/sites/default/For-Health-Professionals/galleries/files/diagnostic-pathway-files/breast-diagnostic-pathway-files/IN60_BC-Revised-FullPath_02-02-2016.pdf)
18. Singh H, De Coster C, Shu E, et al: Wait times from presentation to treatment for colorectal cancer: A population-based study. *Can J Gastroenterol* 24:33-39, 2010
19. Cheung WY, Butler JR, Kliewer EV, et al: Analysis of wait times and costs during the peri-diagnostic period for non-small cell lung cancer. *Lung Cancer* 72:125-131, 2011
20. Yuan Y, Li M, Yang J, et al: Using administrative data to estimate time to breast cancer diagnosis and percent of screen-detected breast cancers: A validation study in Alberta, Canada. *Eur J Cancer Care (Engl)* 24:367-375, 2015
21. Groome PA, Whitehead M, Grunfeld E, et al: The initial per-diagnostic encounter leading to a cancer diagnosis: Development of an administrative data-based approach to its identification. Presented at the Union for International Cancer Control World Cancer Congress, Montreal, QC, Canada, August 27-30, 2012
22. Webber C: Availability and quality of colonoscopy resources and the colorectal cancer diagnostic interval [doctoral dissertation]. Queen's University, Kingston, ON, Canada, 2017
23. Webber C, Flemming J, Birtwhistle R, et al: Wait times and patterns of cancer in the colorectal cancer diagnostic interval. *Int J Pop Data Sci* 1:191, 2017
24. Cancer Care Ontario: Ontario Cancer Screening Performance Report 2016. Toronto, ON, Canada, Cancer Care Ontario, 2016
25. Jiang L, Gilbert J, Langley H, et al: Breast cancer detection method, diagnostic interval and use of specialized diagnostic assessment units across Ontario, Canada [in French]. *Health Promot Chronic Dis Prev Can* 38:358-367, 2018
26. Yuan Y, Li M, Yang J, et al: Factors related to breast cancer detection mode and time to diagnosis in Alberta, Canada: A population-based retrospective cohort study. *BMC Health Serv Res* 16:65, 2016
27. ICES: Data. Discovery. Better health. <https://www.ices.on.ca/>
28. Shewhart WA: Economic Control of Quality of Manufactured Product. New York, NY, Van Nostrand Company, 1931
29. Page ES: Continuous inspection schemes. *Biometrika* 41:100-115, 1954
30. United States Navy: Handbook for basic process improvement. Module 10: Control chart 1996. [http://www.au.af.mil/au/awc/awcgate/navy/bpi\\_manual/mod10-control.pdf](http://www.au.af.mil/au/awc/awcgate/navy/bpi_manual/mod10-control.pdf)
31. Canadian Partnership Against Cancer: Report from the Evaluation Indicators Working Group: Guidelines for Monitoring Breast Cancer Screening Program Performance. Toronto, ON, Canada, Canadian Partnership Against Cancer, 2013
32. Caplan LS, May DS, Richardson LC: Time to diagnosis and treatment of breast cancer: Results from the National Breast and Cervical Cancer Early Detection Program, 1991-1995. *Am J Public Health* 90:130-134, 2000
33. Tartert PI, Pace D, Frost M, et al: Delay in diagnosis of breast cancer. *Ann Surg* 229:91-96, 1999
34. Redaniel MT, Martin RM, Ridd MJ, et al: Diagnostic intervals and its association with breast, prostate, lung and colorectal cancer survival in England: Historical cohort study using the Clinical Practice Research Datalink. *PLoS One* 10:e0126608, 2015
35. Neal RD: Do diagnostic delays in cancer matter? *Br J Cancer* 101:S9-S12, 2009 (suppl 2)
36. Richards MA, Westcombe AM, Love SB, et al: Influence of delay on survival in patients with breast cancer: A systematic review. *Lancet* 353:1119-1126, 1999
37. Tørring ML, Frydenberg M, Hamilton W, et al: Diagnostic interval and mortality in colorectal cancer: U-shaped association demonstrated for three different datasets. *J Clin Epidemiol* 65:669-678, 2012
38. Tørring ML, Frydenberg M, Hansen RP, et al: Evidence of increasing mortality with longer diagnostic intervals for five common cancers: A cohort study in primary care. *Eur J Cancer* 49:2187-2198, 2013
39. Guan Z: Colorectal cancer diagnostic pathways in Ontario [master's thesis]. Queen's University, Kingston, ON, Canada, 2018

