

Monopis jussii, a new species (Lepidoptera, Tineidae) inhabiting nests of the Boreal owl (*Aegolius funereus*)

Marko Mutanen¹, Peter Huemer², Jonna Autto³, Ole Karsholt⁴, Lauri Kaila⁵

1 Ecology and Genetics Research Unit, P.O.Box 3000, FI-90014 University of Oulu, Finland **2** Tiroler Landesmuseen-Betriebsgesellschaft m.b.H., Innsbruck, Austria **3** Apajatie 11, FI-96800 Rovaniemi, Finland **4** Zoological Museum, Natural History Museum of Denmark, Universitetsparken 15, DK-2100 Copenhagen, Denmark **5** Finnish Museum of Natural History, Zoology Unit, P.O.Box 17, FI-00014 University of Helsinki, Finland

Corresponding author: Marko Mutanen (marko.mutanen@oulu.fi)

Academic editor: E.J. van Nieuwerkerken | Received 6 May 2020 | Accepted 26 August 2020 | Published 12 November 2020

<http://zoobank.org/AB14E1B0-0314-4D0E-A42C-0276F0AE6C52>

Citation: Mutanen M, Huemer P, Autto J, Karsholt O, Kaila L (2020) *Monopis jussii*, a new species (Lepidoptera, Tineidae) inhabiting nests of the Boreal owl (*Aegolius funereus*). ZooKeys 992: 157–181. <https://doi.org/10.3897/zookeys.992.53975>

Abstract

Monopis jussii Kaila, Mutanen, Huemer, Karsholt & Autto, **sp. nov.** (Lepidoptera, Tineidae) is described as a new species. It is closely related to the widespread and common *M. laevigella* ([Denis & Schiffermüller], 1775), but differs in its distinct COI DNA barcode sequences, four examined nuclear loci as well as details in forewing coloration and pattern. Most reared specimens of *M. jussii* have emerged from the nest remnants of the Boreal owl (*Aegolius funereus* (Linnaeus, 1758)), but also nests of the Ural owl (*Strix uralensis* Pallas, 1771) and the Great tit (*Parus major* Linnaeus, 1758) have been observed as suitable habitats. Based on the present knowledge, the new species has a boreo-montane distribution as it is recorded only from northern Europe and the Alps. Several extensive rearing experiments from *Strix* spp. nest remnants from southern Finland did not produce any *M. jussii*, but thousands of *M. laevigella*, suggesting that the species is lacking in the area or, more unlikely, that the nest of these owl species do not serve as good habitat for the new species. This unexpected species discovery highlights, once again, the usefulness of DNA barcoding in revealing the cryptic layers of biodiversity. To serve stability we select a neotype for *Tinea laevigella* [Denis & Schiffermüller], 1775, and discuss the complicated synonymy and nomenclature of this species.

Keywords

boreo-montane, cryptic diversity, DNA barcoding, nuclear marker

Introduction

The lepidopteran fauna of Central and North Europe has been investigated for a longer time and more intensively than that of any other region in the world. Consequently, discoveries of species new to the region are nowadays uncommon and usually involve expansive or invasive species. Large-scale efforts to build taxonomically comprehensive regional DNA barcode reference libraries have, however, resulted in a boost in discoveries of overlooked species during the last 15 years, as demonstrated by the increase of new species descriptions e.g. in the family Gelechiidae by Huemer et al. (2020). Characteristic to the new discoveries is that they often concern unexpected cases of cryptic diversity among well-known and often widespread species. Examples of such recent findings, originally detected as deep intraspecific splits in DNA barcode sequences, include *Leptidea reali* Reissinger, 1990 (Dinca et al. 2011), *Olethreutes subtilana* (Falkovitsh, 1959) (Seeger et al. 2010), *Phalonidia udana* (Guenée, 1845) (Mutanen et al. 2012a), *Epinotia cinereana* (Haworth, 1811) (Mutanen et al. 2012b), *Nemophora scopolii* Kozlov, Mutanen, Lee & Huemer, 2016 (Kozlov et al. 2017), several *Elachista* spp. (Mutanen et al. 2013) and *Hoplodrina alsinides* (Costantini, 1922) (Huemer et al. 2020).

There are many more additional cases of potential cryptic diversity in European Lepidoptera, as dozens of species show high levels of genetic polymorphism in their mitochondrial DNA (Mutanen et al. 2016, Huemer et al. 2020). While polymorphism in the mitochondrial DNA may result from multiple other phenomena, including mitochondrial introgression and retained ancestral polymorphism, many of those cases are likely to result from cryptic diversity.

An intraspecific split of the mitochondrial DNA being reflected in the nuclear genome in sexually reproducing species and in sympatry would strongly suggest the presence of cryptic diversity, because, unlike mitochondrial DNA, nuclear DNA is subject to genetic recombination. From this starting point, we sequenced four nuclear markers of *Monopis laevigella* ([Denis & Schiffermüller], 1775), a widespread and common species of tineid moths, showing a deep sympatric genetic split in its DNA barcode region in Europe (Gaedike 2019). Despite the limited number of analyzed specimens, the results provided unequivocal genetic support for the presence of two biologically distinct species. Subsequent morphological examination revealed consistent differences in the adult wing patterns, providing additional support for the overlooked cryptic diversity. Additionally, based on the presently available data, the two species show overlapping, but different ranges and based on the present knowledge, also a different ecology. Based on these grounds, we here describe one of the taxa as new to science.

Material and methods

The material examined was acquired from the following collections:

ITJ	Research collection of Juhani Itämies
MUT	Research collection of Marko & Tomi Mutanen
MZH	Finnish Museum of Natural History, Helsinki, Finland
TLMF	Tiroler Landesmuseum Ferdinandeum, Innsbruck, Austria
ZMUO	Zoological Museum, University of Oulu, Finland
ZSM	Zoologische Staatssammlung München, Germany

Terminology of genitalia follows Robinson and Nielsen (1993) and Gaedike (2019).

Preparation of genitalia generally follows the method outlined by Robinson (1976). Male genitalia were mounted in dorso-ventral position as it was considered to best show shapes of diagnostic structures, even if the shape of the gnathos is not optimally expressed. Male genitalia were stained using Eosin, female genitalia as well as abdominal pelts of both sexes using Chlorazol black. Structures were embedded in Euparal. Images were edited using Corel PHOTO-PAINT (2019).

Species of Tineidae have been systematically sequenced for the standard barcode region of the mitochondrial COI (cytochrome c oxidase subunit 1) in the connection of ongoing regional or national DNA barcoding projects in the Alps (Lepidoptera of the Alps campaign) and Finland (FinBOL). DNA barcode sequencing was conducted at the Canadian Centre for DNA Barcoding (CCDB, Biodiversity Institute of Ontario, University of Guelph) using standard Sanger protocols as explained in deWaard et al. (2008). We successfully sequenced 87 specimens of *Monopis* representing twelve species, the newly described species included. Five European species of *Monopis* (*M. luteocostalis* Gaedike, 2006, *M. henderickxi* Gaedike & Karsholt, 2001, *M. christophi* Petersen, 1957, *M. pallidella* Zagulajev, 1955 and *M. barbarosi* (Koçak, 1981)) were not included in this sampling. Each of them is morphologically clearly distinct from *M. jussii* sp. nov. (Gaedike 2019). Full collection and taxonomic data as well as voucher photographs, DNA sequences and GenBank accession numbers of all these specimens are available in the Barcode of Life Data Systems (BOLD; Ratnasingham and Hebert 2007) in the public dataset DS-MONOJUS at <https://dx.doi.org/10.5883/DS-MONOJUS>. Collection data of the specimens are also given in Table 1. Some of the COI sequences used in this study were previously published in Mutanen et al. (2016), the others are novel.

Four nuclear genes, *carbamoylphosphate synthase domain protein* (CAD), *elongation factor 1 alpha* (EF-1a), *cytosolic malate dehydrogenase* (MDH) and *wingless*, were sequenced at the University of Oulu, Finland. These genes were chosen primarily based on the high amplification success rate in other Tineidae, but also based on our previous experience on their general good functionality to provide useful taxonomic information between closely related species. In these analyses, three specimens of *M. laevigella* and two specimens of *M. jussii*, all collected from Finland, were included. Legs

Table 1. Summary of the collection data of barcoded specimens of *Monopsis* used in this study. For more details, see the public BOLD dataset at <https://dx.doi.org/10.5883/DS-MONOJUS>.

Species	Sample ID	Sequence length	Collector(s)	Collection date	Country	Province	Site	Latitude	Longitude
<i>Monopsis burmanni</i>	TLMF Lep 18816	658	Huemer P.	13-Jun-2006	Austria	Tyrol	Nordtirol, Kranebitter Innaue	47.265	11.323
<i>Monopsis burmanni</i>	TLMF Lep 18234	658	Huemer P.	05-Jun-2015	Austria	Tyrol	Nordtirol, unterer Ellbachtal, unterer Kaiserboden	47.539	11.926
<i>Monopsis crociapitella</i>	TLMF Lep 06512	658	O. Rist	23-Sep-2005	Austria	Vienna	Wien Stadlau	48.217	16.467
<i>Monopsis crociapitella</i>	TLMF Lep 03882	658	Huemer P.	21-May-2004	Spain	Comunidad Valenciana	Valencia, El Saler, Albufera	39.3255	-0.312972
<i>Monopsis fenestratella</i>	MM18616	658	Marko Mutanen	1997	Finland	N	Miänsälä	60.688	25.168
<i>Monopsis fenestratella</i>	MM18615	658	Marko Mutanen	1997	Finland	N	Miänsälä	60.688	25.168
<i>Monopsis fenestratella</i>	MM08511	658	Marko Mutanen	larva 1997-1998	Finland	Ta	Pillikane		
<i>Monopsis fenestratella</i>	MM08510	552	Marko Mutanen	larva 1997-1998	Finland	Ta	Pillikane		
<i>Monopsis imella</i>	TLMF Lep 19836	658	Buchner P.	29-Aug-2014	Austria		Niederösterreich, Sollenau	47.905	16.266
<i>Monopsis imella</i>	TLMF Lep 25734	639	Huemer P.	07-Sep-2016	Austria		Burgenland, Jois SW, Hackelsberg	47.9539	16.7747
<i>Monopsis imella</i>	TLMF Lep 25735	638	Huemer P.	07-Sep-2016	Austria		Burgenland, Jois SW, Hackelsberg	47.9539	16.7747
<i>Monopsis imella</i>	TLMF Lep 23122	658	Huemer P.	26-May-2017	Austria		Burgenland, Hackelsberg	47.9528	16.7733
<i>Monopsis imella</i>	TLMF Lep 19838	658	Buchner P.	17-Aug-2014	Austria		Niederösterreich, Sollenau	47.905	16.266
<i>Monopsis imella</i>	MM18899	658	Kari Vaalamo, Bo Wikström	13-Jul-2002-19-Jul-2002	Finland	Al	Kökar	59.9031	20.74
<i>Monopsis imella</i>	MM18898	658	Pekka Sundell, M. Varesvuo, L. Jalonen, Kalle Lundsten	25-Aug-2004-10-Sep-2004	Finland	Al	Kökar	59.92	20.898
<i>Monopsis imella</i>	MM26020	658	Huotari, Laasonen	08-Jul-2014	Hungary	Tokaj	Tarcal	48.0512	21.1811
<i>Monopsis imella</i>	MM26021	658	Huotari, Laasonen	08-Jul-2014	Hungary		Tokaj, Tarcal	48.0512	21.1811
<i>Monopsis jussii</i>	MM17525	658	Marko Mutanen	2001	Finland	Oba	Ylikiminki	64.984	26.153
<i>Monopsis jussii</i>	MM18626	658	Panu Välimäki & Marko Mutanen	2006	Finland	Oba	Oulu	64.9768	25.3056
<i>Monopsis jussii</i>	MM15526	658	Marko Mutanen	larva 2001	Finland	Oba	Ylikiminki		
<i>Monopsis jussii</i>	TLMF Lep 09795	658	Huemer P.	23-Jun-2006	Italy	South Tyrol	Suedtirol, Tiers E, Pfaferscher Wald	46.472	11.596

Species	Sample ID	Sequence length	Collector(s)	Collection date	Country	Province	Site	Latitude	Longitude
<i>Monopis laevigella</i>	TLMF Lep 09306	658	Huemer P.	19-Jun-2012	Austria	Tyrol	Nordtirol, Oberperntau, Platten	47.301	11.126
<i>Monopis laevigella</i>	TLMF Lep 10365	658	Huemer P.	16-Jun-2013	Austria	Tyrol	Nordtirol, Tiefenbachklamm/Brandenberg	47.484	11.864
<i>Monopis laevigella</i>	TLMF Lep 10441	658	Huemer P.	16-May-2013	Austria	Tyrol	Nordtirol, Tiefenbachklamm/Brandenberg	47.484	11.864
<i>Monopis laevigella</i>	TLMF Lep 07389	658	Huemer P.	25-May-2008	Austria	Tyrol	Nordtirol, Telfs/Moritzen SW, Innuau	47.299	11.05
<i>Monopis laevigella</i>	TLMF Lep 10354	658	Huemer P.	16-Jun-2013	Austria	Tyrol	Nordtirol, Tiefenbachklamm/Brandenberg	47.484	11.864
<i>Monopis laevigella</i>	TLMF Lep 07970	658	Huemer P.	25-May-2012	Austria	Vorarlberg	Umg. Zwischenwasser, Ueble Schlucht, Eingang	47.267	9.667
<i>Monopis laevigella</i>	MM19355	658	O. Martin	larva 14-Oct-2004	Denmark	Sjælland	Nez, Bognaes, Egeboved		
<i>Monopis laevigella</i>	MM17303	658	Tomi Mutanen	09-Jun-2010	Finland	Ab	Salo	60.335	23.088
<i>Monopis laevigella</i>	MM17522	658	Henrik Bruun	01-Apr-2007	Finland	Ab	Naavo	60.225	21.945
<i>Monopis laevigella</i>	MM21029	658	Ali Karhu	27-Jun-2008-29-Jun-2008	Finland	Ka	Liperi	62.552	29.167
<i>Monopis laevigella</i>	MM21028	658	Ali Karhu	1-Jun-2010-25-Jul-2010	Finland	Ka	Liperi	62.551	29.226
<i>Monopis laevigella</i>	MM21026	658	Ali Karhu	03-Jul-2007	Finland	Ka	Liperi	62.563	29.013
<i>Monopis laevigella</i>	MM21025	658	Ali Karhu	2005	Finland	Ka	Liperi	62.511	29.475
<i>Monopis laevigella</i>	MM17524	606	Marko Mutanen	30-Jun-1997	Finland	Oba	Hailuoto	64.968	24.671
<i>Monopis laevigella</i>	MM15527	658	Marko Mutanen	30-Jun-2001	Finland	Oba	Oulu	64.977	25.306
<i>Monopis laevigella</i>	MM10119	658	Marko Mutanen, Nestori Mutanen, Anttoni Mutanen	12-Jul-2008	Finland	Oba	Kiiminki	65.071	25.725
<i>Monopis laevigella</i>	MM18625	658	Panu Välimäki	21-Jun-2000	Finland	St	Luvia	61.29	21.587
<i>Monopis laevigella</i>	MM17526	658	Juhani Itäemies	14-Feb-2005	Finland	St	Eurajoki	61.193	21.417
<i>Monopis laevigella</i>	TLMF Lep 27537	658	Huemer P.	29-Jun-2019	Italy	Piedmont	Fenestrelle, ca. 0,7 km NE Pequelet	45.0517	7.07111

Species	Sample ID	Sequence length	Collector(s)	Collection date	Country	Province	Site	Latitude	Longitude
<i>Monopsis laevigella</i>	TLMF Lep 12113	658	Huemer P.	17-Jul-2013	Italy	South Tyrol	Suedtirol, N Zwischenwasser/ St. Lorenzen	46.739	11.873
<i>Monopsis laevigella</i>	TLMF Lep 11818	658	Huemer P.	25-Jul-2013	Italy	South Tyrol	Suedtirol, Franzenshoehle / Stilfserjoch	46.534	10.486
<i>Monopsis laevigella</i>	TLMF Lep 02066	658	Huemer P.	01-Jul-2010	Italy	South Tyrol	Suedtirol, Ritten/ Obergruenwald	46.597	11.439
<i>Monopsis laevigella</i>	TLMF Lep 05368	658	Huemer P., Tarmann G. M.	01-Aug-2011	Macedonia		Mavrovo NP, Radika valley, around bridge, 10 km NNW Sveti Voda	41.789	20.547
<i>Monopsis monachella</i>	TLMF Lep 08436	658	Huemer P.	25-Jul-2012	Austria	Vorarlberg	Lustenau, Schweizer Ried, AZE Haeusle S	47.446	9.69
<i>Monopsis monachella</i>	TLMF Lep 19839	658	Buchner P.	07-Jun-2014	Austria		Niederosterreich, Sollnau	47.905	16.266
<i>Monopsis monachella</i>	MM13366	658	Marko Mutanen, Panu Välimäki	2008	Finland	Ab	Dragsfjärd	60.011	22.498
<i>Monopsis monachella</i>	MM11934	658	Marko Mutanen, Panu Välimäki	2007	Finland	N	Hanko	59.836	23.236
<i>Monopsis monachella</i>	MM17249	658	Lauri Kaila	21-Aug-2005	Finland	N	Tammisaari	59.829	23.612
<i>Monopsis monachella</i>	MM12377	658	Marko Mutanen, Panu Välimäki	2007	Finland	Sa	Imatra	61.108	28.799
<i>Monopsis neglecta</i>	TLMF Lep 07250	658	Sumpich J.	10-Jun-2010	Austria	Lower Austria	Hardegg Umgebung/ Thaya Haenge	48.854	15.858
<i>Monopsis neglecta</i>	TLMF Lep 17583	658	Deutsch H.	30-Aug-2002	Austria	Tyrol	Osttirol, Lengberg	46.801	12.891
<i>Monopsis neglecta</i>	TLMF Lep 06608	658	Risr O.	11-Jun-2010	Austria	Vienna	Wien Mauer	48.15	16.25
<i>Monopsis nigricantella</i>	TLMF Lep 03881	658	Huemer P.	07-Sep-2005	Spain	Comunidad Valenciana	Valencia, El Saler, Albufera	39.3255	-0.312972
<i>Monopsis nigricantella</i>	TLMF Lep 03879	658	Huemer P.	18-May-2004	Spain	Comunidad Valenciana	Valencia, El Saler, Albufera	39.3255	-0.312972
<i>Monopsis nigricantella</i>	TLMF Lep 03878	658	Huemer P.	22-May-2004	Spain	Comunidad Valenciana	Valencia, Santa Pola, Playa del Pinet	38.1583	-0.625278

Species	Sample ID	Sequence length	Collector(s)	Collection date	Country	Province	Site	Latitude	Longitude
<i>Monopsis nigricantella</i>	TLMF Lep 03880	658	Huemer P.	08-Sep-2005	Spain	Comunidad Valenciana	Valencia, El Saler, Albufera	39.3255	-0.312972
<i>Monopsis obviella</i>	TLMF Lep 15096	636	Huemer P.	19-Jun-2014	Austria	Tyrol	Nordtirol, Baumkirchen W	47.296	11.552
<i>Monopsis obviella</i>	TLMF Lep 09367	658	Huemer P.	02-Jun-2012	Austria	Tyrol	Nordtirol, Flaurling NW, Innuau	47.302	11.121
<i>Monopsis obviella</i>	TLMF Lep 08054	658	Huemer P.	15-Jun-2012	Austria	Vorarlberg	Bludesch, Bludesscher Magerrasen E, Umg. Jordan	47.203	9.747
<i>Monopsis obviella</i>	TLMF Lep 09962	658	Huemer P.	19-Jun-13	Austria	Vorarlberg	Umg. Langeregg, Langeregg-Leiten, Föhren	47.467	9.883
<i>Monopsis obviella</i>	TLMF Lep 25739	658	Huemer P.	07-Sep-2016	Austria		Burgenland, Jois SW, Hackelsberg	47.9539	16.7747
<i>Monopsis obviella</i>	TLMF Lep 19832	658	Buchner P.	29-Aug-2014	Austria		Niederösterreich, Sollenau	47.905	16.266
<i>Monopsis obviella</i>	MM18928	658	Kari Vaalamo, Bo Wikström	19-Jul-2008-23-Jul-2008	Finland	Al	Lemland	59.9564	20.0116
<i>Monopsis obviella</i>	MM06790	658	Marko Mutanen	13-Jul-2007	Finland	Al	Lemland	60.026	19.961
<i>Monopsis obviella</i>	MM21130	658	Marko Mutanen, Tomi Mutanen, Anttoni Mutanen, Nestori Mutanen	16-Jul-2011	Finland	N	Hanko	59.834	23.013
<i>Monopsis obviella</i>	TLMF Lep 27604	658	Huemer P.	28-Jun-2019	Italy	Piedmont	Fenestrelle, ca. 1 km WNW Pequelet	45.0497	7.05139
<i>Monopsis obviella</i>	TLMF Lep 27794	630	Huemer P.	23-Jul-2019	Italy	Piedmont	Fenestrelle, ca. 0,7 km NE Pequelet	45.0517	7.07111
<i>Monopsis obviella</i>	TLMF Lep 10292	658	Huemer P.	25-Jun-2013	Italy	South Tyrol	Suedtirol, Margreid/Fennerschluht	46.288	11.201
<i>Monopsis obviella</i>	TLMF Lep 02169	658	Huemer P.	04-Jun-2010	Italy	South Tyrol	Suedtirol, Monnigg// Kleiner Priol	46.428	11.3
<i>Monopsis obviella</i>	TLMF Lep 12282	658	Huemer P.	05-Jul-2013	Italy	South Tyrol	Suedtirol, Schleiser Leiten	46.698	10.517
<i>Monopsis spilotella</i>	MM04157	658	Marko Mutanen		Finland	Le	Enontekiö	68.997	20.744

Species	Sample ID	Sequence length	Collector(s)	Collection date	Country	Province	Site	Latitude	Longitude
<i>Monopsis spilotella</i>	MM24137	658	Marko Mutanen, Anttoni Mutanen, Nestori Mutanen	05-Jul-2014	Finland	Lkoc	Muonio	67.9178	23.7466
<i>Monopsis spilotella</i>	MM03158	658	Marko Mutanen	2006	Finland	Oba	Kiiminki	65.071	25.725
<i>Monopsis spilotella</i>	MM02304	658	Marko Mutanen, Panu Välimäki	2006	Finland	Sa	Imatra	61.108	28.799
<i>Monopsis weaverella</i>	TLMF Lep 15166	658	Huemer P.	09-Jun-2014	Austria	Tyrol	Nordtirol, unterer Ellbachtal, unterer Kaiserboden	47.539	11.926
<i>Monopsis weaverella</i>	TLMF Lep 15178	658	Huemer P.	09-Jun-2014	Austria	Tyrol	Nordtirol, unterer Ellbachtal, unterer Kaiserboden	47.539	11.926
<i>Monopsis weaverella</i>	TLMF Lep 18561	658	Huemer P.	20-Jul-2005	Austria	Tyrol	Nordtirol, Umg. Innsbruck, Samertal, Jägerkar	47.34	11.382
<i>Monopsis weaverella</i>	TLMF Lep 07388	658	Huemer P.	25-May-2008	Austria	Tyrol	Nordtirol, Telfs/Moritzten SW, Innau	47.299	11-May
<i>Monopsis weaverella</i>	TLMF Lep 09220	658	Huemer P.	06-Jun-2010	Austria	Tyrol	Nordtirol, Wälchsee/Schwemm N	47.661	12.298
<i>Monopsis weaverella</i>	MM21138	658	Marko Mutanen, Tomi Muranen	18-Jun-2011	Finland	Ab	Nauvo	60.192	21.923
<i>Monopsis weaverella</i>	MM13581	658	Marko Mutanen, Panu Välimäki	2008	Finland	Ab	Dragsfjärd	60.011	22.498
<i>Monopsis weaverella</i>	MM21027	658	Ali Karhu	21-Jun-2004-23-Jun-2004	Finland	Ka	Liperi	62.552	29.167
<i>Monopsis weaverella</i>	MM04159	658	Marko Mutanen		Finland	Le	Enontekiö	68.997	20.744
<i>Monopsis weaverella</i>	MM04158	658	Marko Mutanen		Finland	Le	Enontekiö	68.997	20.744
<i>Monopsis weaverella</i>	MM02600	639	Marko Mutanen, Panu Välimäki	2006	Finland	Sa	Imatra	61.108	28.799
<i>Monopsis weaverella</i>	TLMF Lep 22008	658	Schaefer W.	07-Aug-2015	Germany		Kefenrod	50.35	9.21667

of dry and pinned adult specimens were used for extraction of genomic DNA with DNeasy Blood & Tissue Kit (Qiagen). We largely followed the sequencing protocol by Wahlberg and Wheat (2008), but PCR clean-up was carried out with ExoSAP-IT (Affymetrix, Santa Clara, CA, USA) and Sephadex columns (Sigma-Aldrich, St. Louis, MO, USA). Additionally, sequencing was performed using an ABI 3730 DNA Analyzer (Applied Biosystems, Foster City, CA, USA). Sequences were checked and edited using BioEdit software (Hall 1999). The sequences were uploaded to a VoSeq database (Peña and Malm 2012). The same dataset was used to generate fasta files for Neighbor-Joining analyses.

Minimum genetic p-distance barcode divergence between *M. laevigella* and *M. jussii* was calculated using analytical tools in BOLD Systems v. 4.0 (<http://www.bold-systems.org>). Neighbor-joining trees for the barcode region for all included *Monopis* species and specimens as well as four nuclear genes for five analyzed specimens of *M. laevigella* and *M. jussii* were constructed under p-distance model using Mega 7.0 (Kumar et al. 2016). The trees were stylized using CorelDraw v. 20.0.0.633.

Results

DNA sequencing resulted in a barcode of 552 bp or longer for 81 specimens. All except seven specimens yielded a full-length (654 bp) barcode. BOLD's barcode gap analysis showed that all included species have highly species-specific DNA barcodes with the mean of minimum divergences (p-distance model) to the nearest species being 10.01% (range 4.43–17.58%) (Figure 1). The minimum divergence between *M. laevigella* and *M. jussii* is 4.43%.

For each nuclear gene, data of only a single specimen of two analyzed *M. jussii* specimens were retrieved. Informative (i.e. data from both species available) sequence lengths by genes were as follows: CAD: 336 bp, EF-1a: 410 bp, MDH: 334 bp, wingless: 307 bp. Genetic p-distances between the two species were: CAD: 2.1%, EF-1a: 2.2%, MDH: 1.5%, and wingless: 4.1%. As a rule, the specimen of *M. jussii* formed a sister to the two or three specimens of *M. laevigella* (Figure 2).

***Monopis jussii* Kaila, Mutanen, Huemer, Karsholt & Autto, sp. nov.**

<http://zoobank.org/288523EF-4785-4711-B5DF-483D42057841>

Figures 3–9

Type material. *Holotype* ♂ (Figure 3): FINLAND, PPe Yli-Kiiminki, larva 2001, ex nest of *Aegolius funereus*, M. Mutanen leg. R. Gaedike prep. 8607. (ZMUO).

Paratypes. FINLAND • 7 ♂ 16 ♀, PPs Kiiminki, 65.1163°N, 25.8291°E, Larva 1995, ex nest of *Aegolius funereus*, L. Kaila prep. 6317, 6325, 6326, M. Mutanen leg. (ZMUO); Finland: 10 ♂, 16 ♀, PPe Yli-Kiiminki, larva 2001, ex nest of *Aegolius funereus*, L. Kaila prep. 6314, 6315, 6316, 6322, 6323, 6324, R. Gaedike prep. 8606,

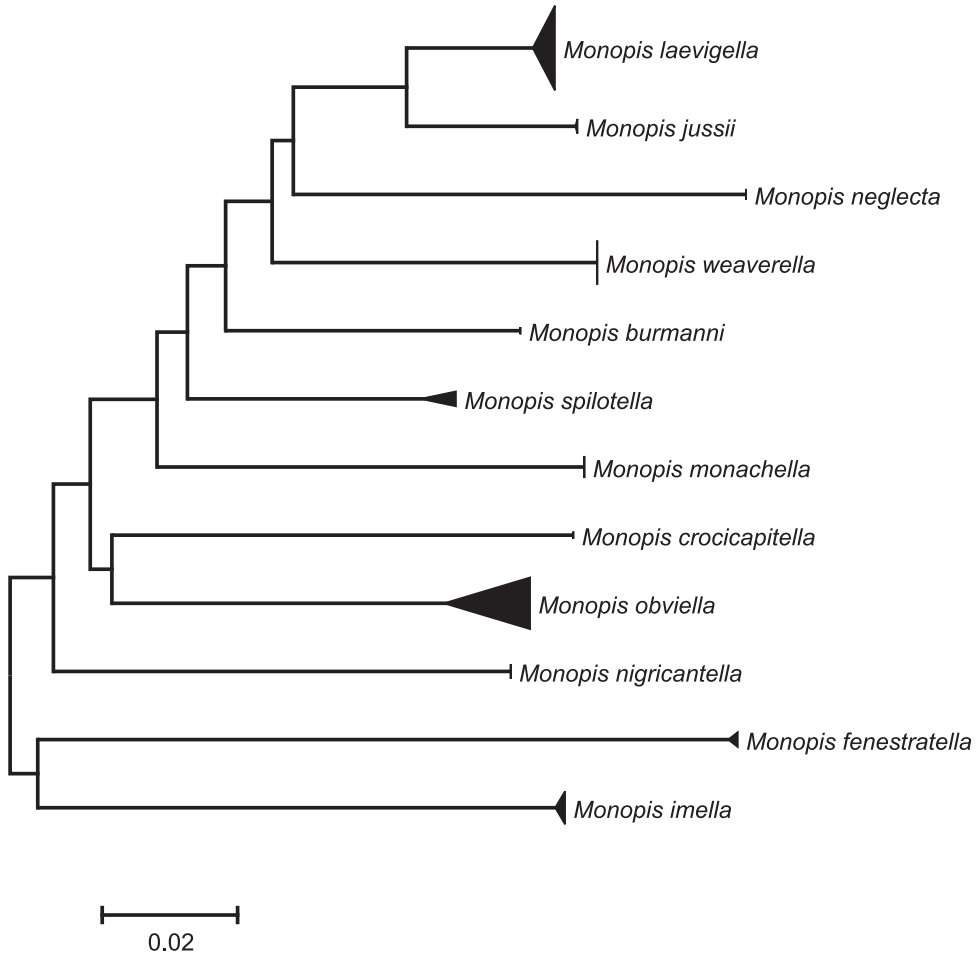


Figure 1. A compressed Neighbor-Joining tree DNA barcode region of European *Monopis* with most European species represented. The depth of the triangle is proportional to the intraspecific genetic variability within species and the height to sampling intensity.

8607, 8698, DNA samples MM15526, MM17525, M. Mutanen leg. (ZMUO); • 2 ♀, Oba Utajärvi, Pälli, 64.8363°N, 26.21°E, larva 1980 ex nest of *Aegolius funereus*, J. Itämies leg. (ITJ); • 3 ♂ 3 ♀, Kn Puolanka, Piltunkijärvi, 64.7618°N, 27.3151°E, larva 18.6.1976 ex nest of *Aegolius funereus* (1974), M. Rikkonen leg. (ZMUO); • 2 ♂, Kn Vaala, Otermajärvi, 64.6724°N, 27.1047°E, larva 12 Jun 1976 ex nest of *Aegolius funereus* (1974), M. Rikkonen leg. (ZMUO); • 1 ♀, Kn Kajaani, 64.2263°N, 27.7932°E, VYÖ 1210 *ad luc* 15. –21 Jun 2006, DNA sample MM 17523, R. Leinonen leg. (ZMUO). ITALY • 1 ♀, Südtirol, Tiers E, Plafetscher Wald, 1600–1650 m, 46.472°N, 11.596°E, 23 Jun 2006, leg. Huemer, DNA sample TLMF Lep 09795 (TLMF).

Other material. FINLAND • 7 ♂ 4 ♀, Ta Valkeakoski, Sääksmäki, 61.2326°N, 24.1137°E, ex larva (host unknown); 1992, S. Karhula leg. (MZH); • 2 ♀, Kn Kajaani,

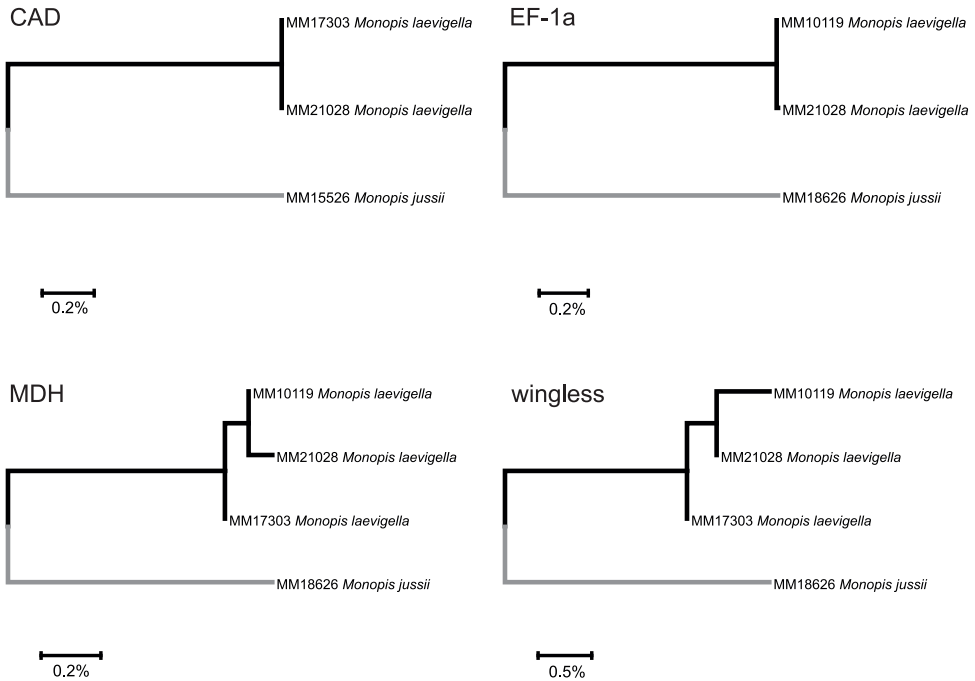


Figure 2. Comparison of genetic variability in four nuclear genes, CAD, EF-1a, MDH and wingless, between *Monopis laevigella* and *M. jussii* sp. nov.

Karankalahti, 64.2222°N, 27.721°E, ex larva 2016 from nest of *Strix uralensis*, Itämies & Kyrki leg. (ZMUO); 1 ♀, PPe: Oulu, Oinaansuo, 65.0249°N, 25.6209°E, larva 28 Apr 1992 in nest of *Parus major*, J. Itämies leg. (ZMUO); • 1 ♀, EP Jurva, 62.7002°N, 22.0153°E, ex larva 2006, H. Vuorinen leg. (ZMUO); 2 ♀, Ks Kuusamo, 66.2565°N, 29.2807°E, ex larva 1975, J. Viramo leg. (ZMUO); • 1 ♂ 1 ♀, Ks Salla, Värriö, R1 & R3, 30 Jun 1989 & 21 Jul 1987, Erkki Pulliainen leg. (ZMUO); • 1 ♀, Li Inari, Kivijoki, 68.6125°N, 28.3509°E, 15 Jul 1993, E. & L. Laasonen leg. (ZMUO); • 1 ♂, Ks Kuusamo, Autiotalo, 66.3591°N, 29.6029°E, 28 Jun 1995, E. & L. Laasonen leg. (ZMUO); • 1 ♂, PPn Rovaniemi, 66.5509°N, 25.7619°E, 17 Jun 1992, T. Mutanen leg. (ZMUO); • 1 ♀, EnL Enontekiö, Saana, 69.0456°N, 20.8554°E, 11 Jul 2016, Marko, Nestori & Anttoni Mutanen leg. (ZMUO); • 1 ♀, Pedersöre, 8 Jul 1939, Sjöholm leg. (ZMUO); • 1 ♀, Om Jakobstad, 63.7098°N, 22.6489°E, 21 Jun 1936, E. Sjöholm leg. (ZMUO); 2 ♂, KP Haapajärvi, Harjunniemi, 63.7434°N, 25.3292°E, ad luc. 3 Jul 1975 & 6 Jul 1975, A. Kosonen leg. (ZMUO); NORWAY • Finnmark Alta, Mattisfossen-Sakkopadne, 5 Jul 1973, J. Kyrki leg. (ZMUO); SWEDEN • Härjedalen, Vemdalen, 3 Jul 1947, Henrik Bruun leg. (ZMUO).

Diagnosis. *Monopis jussii* sp. nov. is externally close to *M. laevigella*, but the forewing appears darker, as it is less mottled with pale scales, especially along the margins (Figures 4, 5). Fringes are yellow and with a clear fringe line in *M. laevigella* but grey and without the fringe line in *M. jussii*. Besides the genetic markers, the forewing col-

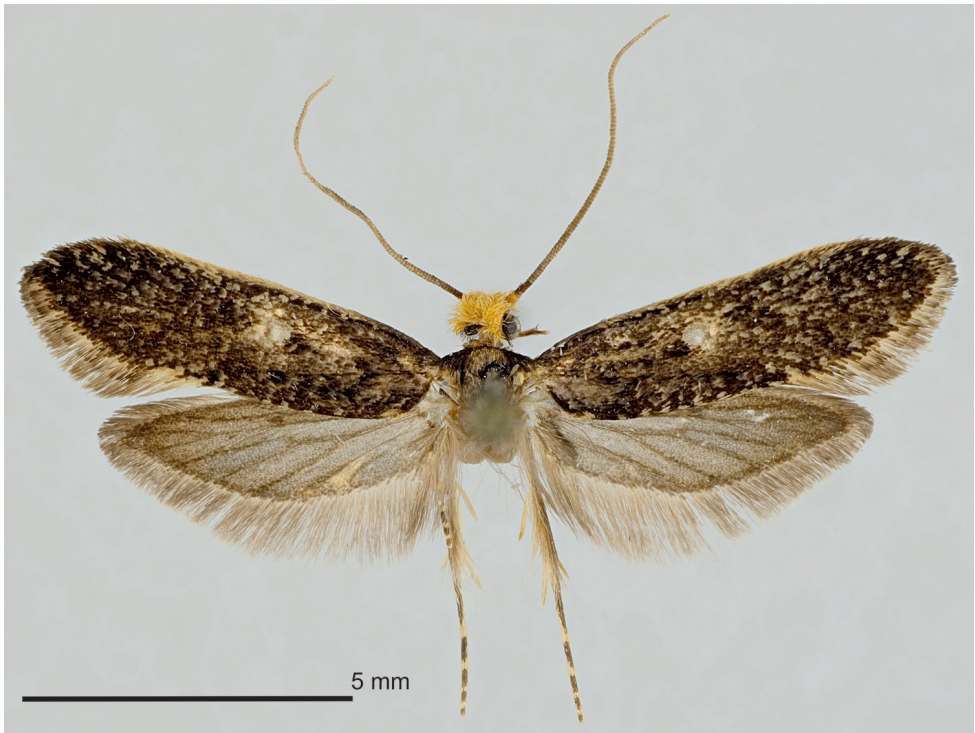


Figure 3. The holotype male of *Monopis jussii* sp. nov. PPe Yli-Kiiminki, larva 2001, ex nest of *Aegolius funereus*, M. Mutanen leg., R. Gaedike prep. 8607. (Coll. ZMUO).

our is indeed the best clue to separate these species. There is nevertheless some variation, especially in *M. laevigella*. Both male and female genitalia vary considerably, as do those of *M. laevigella*. The variation in all characters of genitalia overlaps between these species, and, apparently, they cannot be identified by genital characters. For variation of *M. laevigella* see also Gaedike (2019). Moreover, *M. weaverella* (Scott, 1858) and *M. neglecta* Šumpich & Liška, 2011 may occasionally fall within the morphological variation of these two species, especially in females. The males of *M. weaverella* and *M. neglecta* can however be distinguished from *M. laevigella* and *M. jussii* by the shape of gnathos, best decipherable in lateral view (see Gaedike 2019): gnathos arms are straight, triangular in *M. weaverella* and *M. neglecta*, angled particularly in anterior margin in *M. laevigella* and *M. jussii*.

Description. Forewing length 5.8–8.5 mm ($n = 8 \text{ ♂}$ and 8 ♀) (note that the specimens are reared which may have affected their size). Maxillary palpus, labial palpus and head ochreous yellow; outer side of labial palpus with dark grey scales, second segment distally bristled. Scape of antenna ochre with pecten formed of bristle-shaped scales, pedicel and flagellum dark brown. Thorax dark grey, dorsomedially variably intermixed or entirely with pale ochre scales; tegula dark grey, apically often paler grey or ochre. Fore and mid leg inwardly ochre, outwardly leaden grey, apex of tibia and tarsal segments

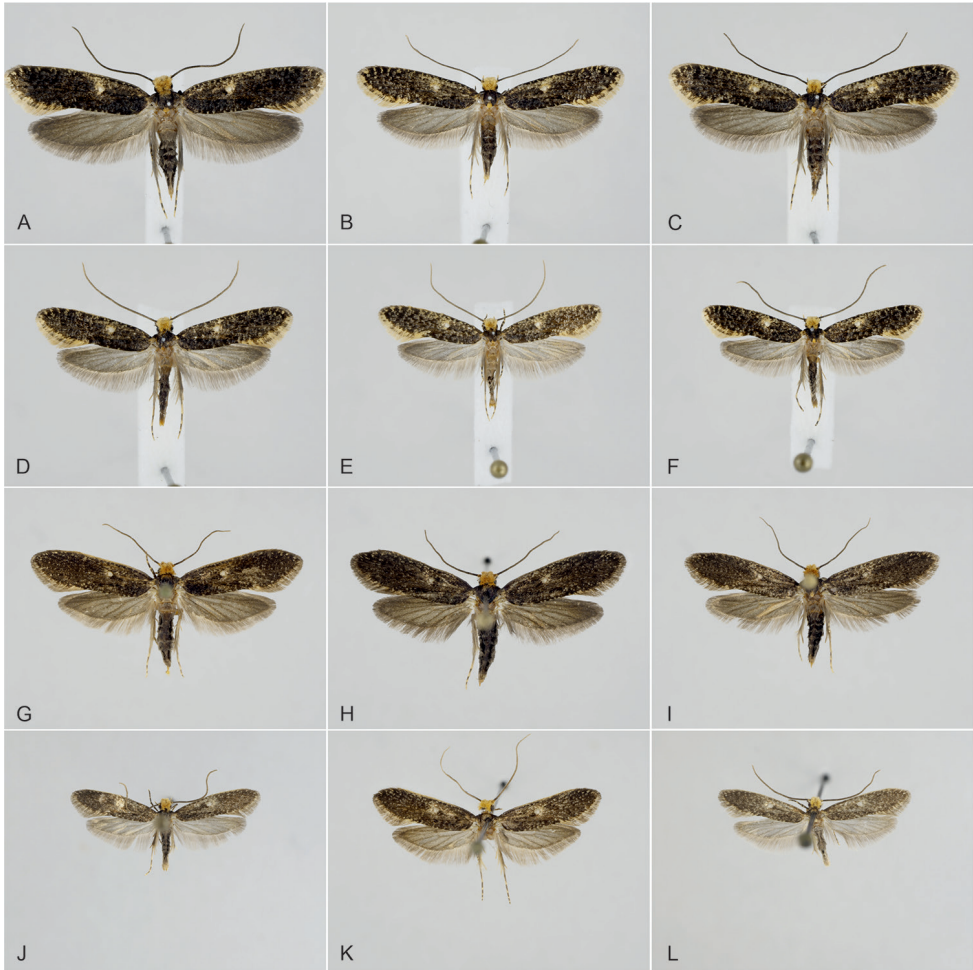


Figure 4. Comparison of habitus between *Monopis laevigella* and *M. jussii* sp. nov. **A–C** *M. laevigella* female **D–F** *M. laevigella* male **G–I** *M. jussii* paratype, females **J–L** *M. jussii* paratype, males.

ochre. Hind leg inwardly pale, outwardly ochre, intermixed with grey scales; spurs and apex of tibia and tarsal articles ochre. Forewing dark grey, variably mottled with pale grey scales; costa narrowly and variably sometimes ochre; basal scales of termen with alternating pale ochre and grey scales, distal scales of termen unicolorous grey, contrast between distally paler basal scales and darker distal scales giving an impression of faint fringe line; silvery grey spot somewhat basal of middle of wing length at fold. Hind wing bluish grey with somewhat darker grey veins; fringe basally narrowly ochre, otherwise grey. Underside of wings grey with ochre margin; underside of hindwing dark grey along costal margin. Abdomen leaden grey, basal segments ventrally more or less ochre.

Male genitalia (Figure 6). Uncus elongate, triangular, laterally with long, hair-like scales, distally pointed, bifid. Gnathos arms angled in the middle, tapered toward hook-shaped apex. Basal and distal margins of tegumen reinforced, U-shaped, anter-

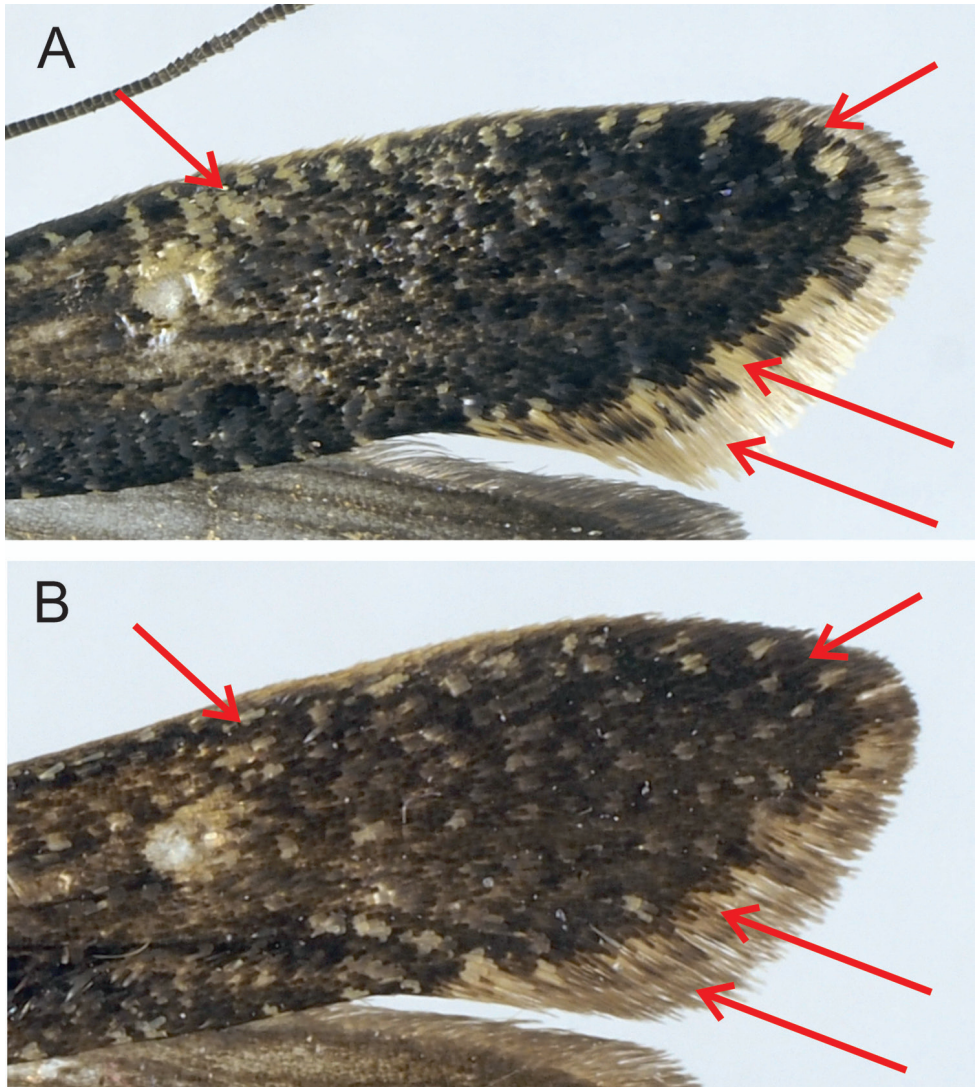


Figure 5. Comparison of forewing patterns of *Monopis laevigella* (A) and *M. jussii* sp. nov. (B). The arrows indicate differences in fringe colour (yellow/grey), fringe line (present/absent; chequered/non-chequered) and forewing costa (many white scales between the costa and the dorsal spot/few white scales between the costa and the dorsal spot).

ior margin more deeply. Shape of valva highly variable, gradually varying from ovoid and basally broadest to somewhat elongate and medially widest; distally round. Every aspect of saccus variable; straight or somewhat undulate, apically little or very much widened; length also very variable. Phallus straight and nearly parallel-sided, slightly widened at basal 1/3; length compared to that of saccus impossible to establish due to variation in length of saccus. Phallus distally inserted in cylindrical, internally spinose anellus. Vesica distally densely spinose, devoid of cornuti.

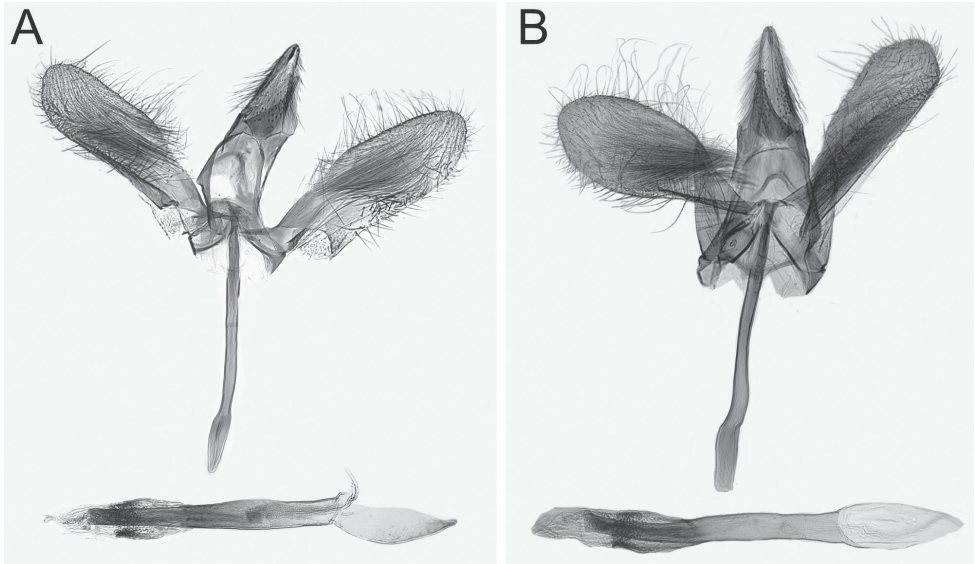


Figure 6. Overview of male genitalia of *Monopis jussii* sp. nov. **A** paratype, Finland, Kiiminki, M. Mutanen leg., L. Kaila prep. 6317 **B** Finland, Yli-Kiiminki, M. Mutanen leg., L. Kaila prep. 6315.

Female genitalia (Figures 7–9). Papilla analis membranous, elongate, distally round, with a few setae. Apophysis posterioris as long as segments 7+8, posteriorly starting as continuation of papilla analis, slender, anteriorly slightly widened, apex cut. Apophysis anterioris 1/3 length of and slightly stouter than apophysis posterioris, twice as long as 8th segment, distally not widened. Ovipositor telescopic, with two retractile nodes; with a few stout setae. Ventral pseudapodemes (*sensu* Davis and Robinson 1999) not decipherable. Tergum 8 posteriorly somewhat sclerotized. Ostium a widely U-shaped opening, laterally bordered as posteriorly curved rim, laterad shallowly emarginated in posterior direction, emargination with a few long setae; devoid of microtrichia but minutely granulose. Length of antrum variable, narrowed toward colliculum; colliculum tubular, length variable, 2–4 times as long as wide, usually narrowed in the middle. Ductus bursae between colliculum and corpus bursae membranous, as long as apophysis anterioris. Corpus bursae oval, 3 times as long as wide; in approximately the middle to posterior 1/3 ca. 12 elongate, sharply spicular or dentate signa forming transverse band.

Genetic characterisation. Clearly distinguishable by its DNA barcode from all other species of *Monopis* barcoded globally so far (Figure 1). Genetically the closest species with a minimum divergence of 4.43% is *M. laevigella*. Intraspecific divergence among four barcoded specimens from Finland and Italy is 0.15%. Additionally, the species show 1.5–4.1% interspecific divergence in the nuclear genes of *CAD*, *EF-1a*, *MDH* and *wingless* (Figure 2).

Etymology. The species is dedicated to Dr Juhani (Jussi) Itämies, a Finnish expert of Lepidoptera who, as far as we know, is the first to have reared this species. He has



Figure 7. Overview of female genitalia of *Monopis jussii* sp. nov., paratype, Finland, Yli-Kiiminki, M. Mutanen leg., L. Kaila prep. 6324.

also spent most of his life on faunistic research of Finnish Lepidoptera and has done incredible work in elucidating the life history of numerous microlepidopteran species.

Distribution. From our available observations *M. jussii* seems to have a boreo-montane distribution pattern. It is widely distributed in Finland and also recorded from Norway (Finnmark) and Sweden (Härjedalen). Records from the Alps seem rare with a proved, barcode-based locality in the Italian Dolomites and two further unpublished records (ZSM, A. Segerer) in the Bavarian Alps.

Biology. So far reared on five different occasions from the nest bottoms of the Boreal owl (*Aegolius funereus*). Two specimens in the collection of ZMUO have been reared from the nest of the Ural owl (*Strix uralensis*) and one specimen from the nest

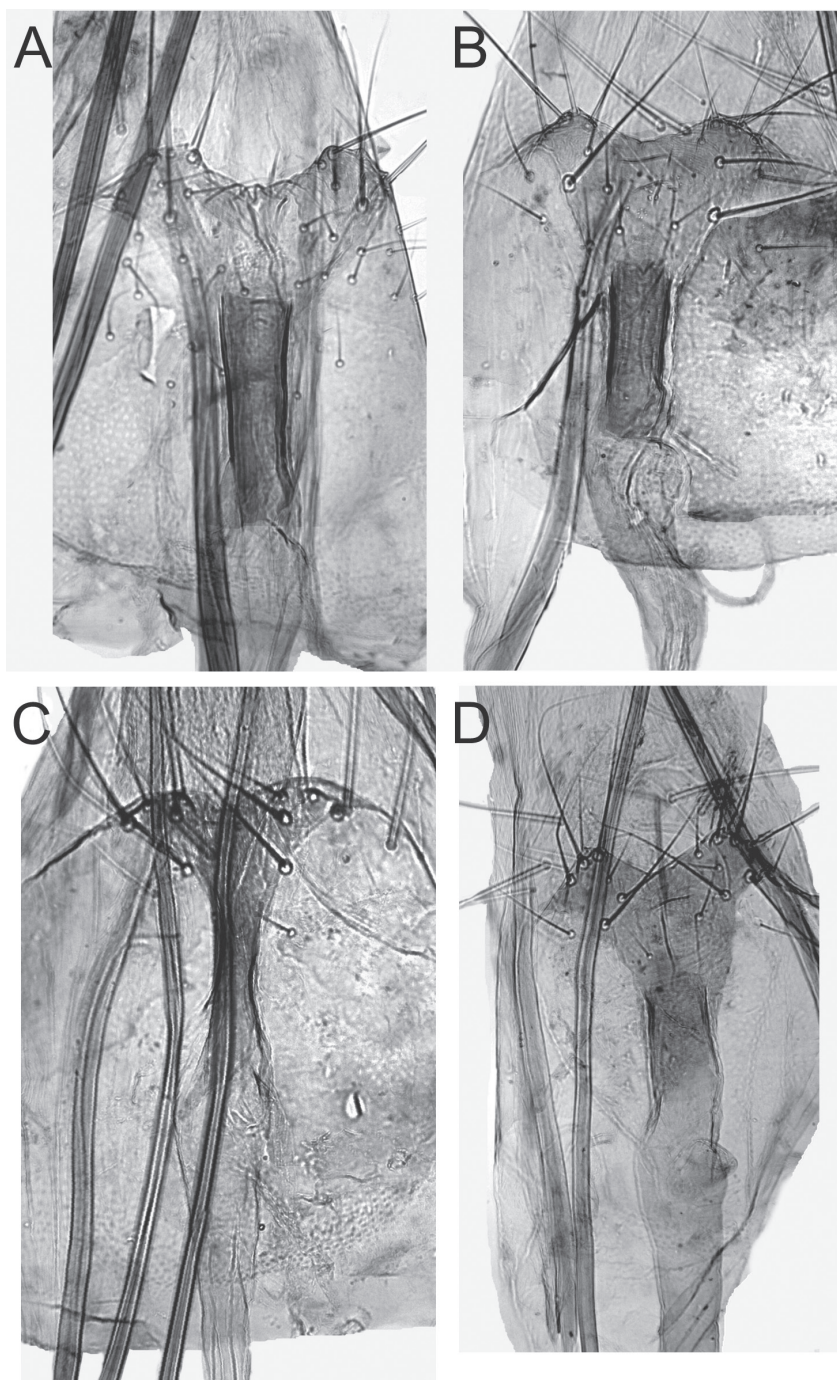


Figure 8. Details of ostium bursae and colliculum of female genitalia of *Monopis jussii* sp. nov. **A** paratype, Finland, Yli-Kiiminki, M. Mutanen leg., L. Kaila prep. 6324 **B** paratype, Finland, Kiiminki, M. Mutanen leg., L. Kaila prep. 6325 **C** paratype, Finland, Yli-Kiiminki, M. Mutanen leg., L. Kaila prep. 6322 **D** paratype, Finland, Kiiminki, M. Mutanen leg., L. Kaila prep. 6326.

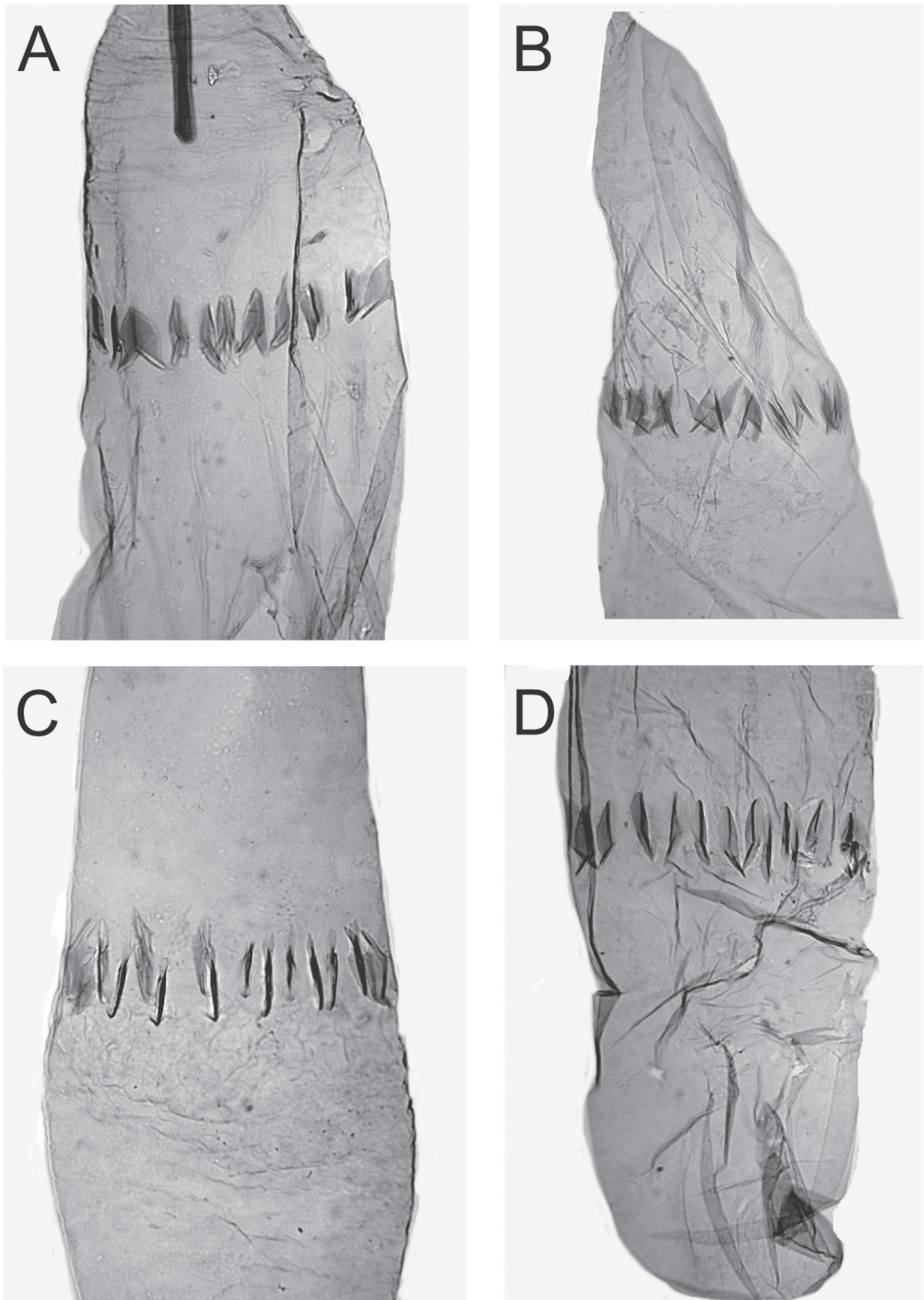


Figure 9. Signa of corpus bursae of female genitalia of *Monopis jussii* sp. nov. **A** paratype, Finland, Yli-Kiiminki, M. Mutanen leg., L. Kaila prep. 6324 **B** paratype, Finland, Kiiminki, M. Mutanen leg., L. Kaila prep. 6325 **C** paratype, Finland, Yli-Kiiminki, M. Mutanen leg., L. Kaila prep. 6322 **D** paratype, Finland, Kiiminki, M. Mutanen leg., L. Kaila prep. 6326.

of the Great tit (*Parus major*). Additionally, three reared specimens of two different rearing events do not state anything about the origin. One specimen has been found in a vacated house. Thirteen specimens in coll. ZMUO and a specimen from the Italian Alps in coll. TLMF have been collected in the wild between 17 June to 21 July, which matches well with the flight time of other *Monopis* species of these regions.

Taxonomic remarks on *Monopis laevigella*

Monopis jussii sp. nov. is most closely related to *M. laevigella* and can easily be confused with that species (see above). We therefore re-evaluate available names in the *M. laevigella* species group.

Monopis laevigella ([Denis & Schiffermüller], 1775).

Tinea laevigella [Denis & Schiffermüller], 1775: 139.

Misidentifications

Tinea rusticella Hübner, 1796: 61, pl. 3, fig. 17; a junior synonym of *Haplotinea insectella* (Fabricius, 1794) (Zeller, 1852: 153–154).

Recurvaria rustica Haworth, 1828: 548; unjustified emendation of *Tinea rusticella* Hübner, 1796.

Tinea saturella Haworth, 1828: 562, unavailable.

Tinea vestianella sensu Stephens, 1835: 344; a misidentification of *Phalaena* (*Tinea*) *vestianella* Linnaeus, 1758.

Blabophanes rusticella ab. *semispilotella* Strand, 1900: 225; unavailable name, deemed infrasubspecific according to ICZN Art. 45.6.2 from use of the term “ab.”; a misidentification of *M. weaverella* (Scott, 1858) (Gaedike 2019).

Neotype selection

Tinea laevigella was described from an unspecified number of specimens collected in the area of Vienna, Austria ([Denis & Schiffermüller], 1775). The collection was later deposited in the “Hof-Naturalien-Kabinett” and destroyed by fire during the Vienna Rebellion on 31st of October 1848 (Speta 2003). Since this species can be confused with *M. jussii* sp. nov. and several other congeneric taxa we designate as neotype a male specimen from Austria to preserve stability (Figure 10). It is labelled “AUSTRIA occ. Nordtirol / Brandenburg / Tiefenbachklamm / 11°51'52"E, 47°29'4"N / 645 m, 16.6.2013 / leg. Huemer” “DNA Barcode / TLMF Lep 10354” (TLMF).

Tinea rusticella was figured twice by Hübner in the eighth volume of his *Sammlung europäischer Schmetterlinge*, first it was validly described on page 61, pl. 3, fig. 17 (1796) and later a different species was figured on pl. 49, fig. 339 (1813). Hübner (1825) considered them conspecific, and he referred to both figures when he erected the monotypic genus *Monopis*.



Figure 10. Neotype male of *Monopis laevigella* from Austria, here designated. AUSTRIA occ. Nordtirol / Brandenburg / Tiefenbachklamm / 11°51'52"E, 47°29'4"N / 645 m, 16.6.2013 / leg. Huemer" "DNA Barcode / TLMF Lep 10354". (Coll. TLMF).

Zeller (1852) was probably the first to question whether Hübner's two figures of *Tinea rusticella* represented the same species. He referred to Hübner's fig. 339 (1813) when dealing with the species, which became known as *Monopis rusticella* [= *Monopis laevigella* ([Denis & Schiffermüller], 1775)], and rejected that Hübner's fig. 17 (1796) could be of a specimen of that species, suggesting that it could be *Tinea misella* Zeller, 1839 [= *Haplotinea insectella* (Fabricius, 1794)]. *Tinea rusticella* Hübner, 1813 is both a misidentification and a homonym of *Tinea rusticella* Hübner, 1796 and thus permanently invalid.

Haworth (1828: 548) named the species twice. First with reference to Hübner's pl. 3, fig. 17 as *Recurvaria rustica*, which is an unjustified emendation and thus an objective synonym of *Tinea rusticella* (Hübner, 1796) [= *Haplotinea insectella* (Fabricius)], and later in the same work Haworth (op. cit.: 339), again with reference to Hübner's pl. 3, fig. 17, proposed the name *Tinea saturella* in synonymy with *Tinea rusticella*. Because *Tinea saturella* was described in synonymy with *Tinea rusticella* it was always considered a synonym of that species (viz. *Monopis rusticella*), but because Haworth referred only to Hübner's fig. 17 (and not to fig. 339) it is an objective junior synonym of *Tinea rusticella* Hübner, 1796, and thereby a subjective junior synonym of *Haplotinea insectella* (Fabricius). However, as the name *Tinea saturella* has never been made available under the provision of Art. 11.6. of the Code (ICZN 1999) and adopted as the name of a taxon before 1961, we consider it as unavailable.

Although *Monopis* Hübner 1825 was described as a monotypic genus, it is based on a partly misidentified species. We consider Zeller (1852) as First Reviser of *Tinea rusticella* Hübner, restricting the name to the species now (and also by Zeller 1852) known as *Monopis laevigella* ([Denis & Schiffermüller], 1775).

Discussion

Compared with many other groups of Lepidoptera, the species diversity of Tineidae is generally poorly investigated. Hundreds of species deposited in museum collections remain undescribed (Robinson 2009). It is likely that many more species remain entirely undiscovered globally. The European fauna is comparatively well understood, and the fauna of the entire continent has recently been taxonomically reviewed in two monographs (Gaedike 2015, 2019). New species discoveries are uncommon, particularly for central and northern parts of Europe. An example of a recent species discovery is that of *Monopis neglecta* Šumpich & Liška, 2011, a species that morphologically is nearly indistinguishable from *M. weaverella* (Scott, 1858) (see Gaedike 2019). While no genetic data were provided for *M. neglecta* in the original description, the DNA barcode sequences provided in the present study confirm its status as a separate species from *M. weaverella*. It is encouraging that although the species of Tineidae are often difficult to tell apart from each other morphologically, no cases of barcode sharing in the European fauna are known. Evidently, therefore, DNA barcoding provides an efficient way to investigate their diversity in less thoroughly explored areas as well.

Based on the available distributional data, *Monopis jussii* has a much more limited range than *M. laevigella*. It is possible, if not likely, that it is a member of boreo-montane faunal elements, being distributed in the boreal region on the one hand and in the Alps below the timberline on the other hand. It is likely absent from the lowlands of Central Europe. It would not be surprising if the species turns out to be present in other European mountain systems and the eastern Palearctic. Based on the large number of examined museum specimens from the ZMUO and MZH collections, the species is widely present in northern Finland south to ca. 64° N but becomes much scarcer towards the more southern localities. The southernmost verified records from Finland are from the province of Tavastia australis (ca. 61° N).

Based on our own and other experiences (Robinson 2009, Gaedike 2019), *Monopis laevigella* is not strict regarding the source of its food, but it seems to prefer cavity-breeding birds, possibly because their nests are usually dry. Several extensive rearing experiments of nest bottoms of various birds, mostly the Tawny Owl (*Strix aluco* Linnaeus, 1758) and the Ural Owl (*S. uralensis* Pallas, 1771), from southern Finland have yielded large numbers of *M. laevigella*, which is usually present in every nest in large numbers. In an experiment by MM in 2017 with 13 nest bottoms of *Strix* spp., probably thousands of *M. laevigella* emerged. Among several dozen pinned specimens sampled from each nest, none represents *M. jussii*. Other species that are regularly or often

present in the nests of *Strix* spp. in Finland are *Niditinea striolella* (Matsumura, 1931) (usually emerges in great numbers too), *Tinea svenssoni* Opheim, 1965 (present in almost all nests), *Tinea steueri* Petersen, 1966 (not present in every nest) and *Monopis fenestratella* (Heyden, 1863) (present in most nests but is cryptic in behaviour). While it is possible that *M. jussii* has stricter habitat requirements and that it has a strong preference for the Boreal Owl, we find this possibility unlikely. The Boreal owl, the Ural owl, as well as the Great tit are all cavity breeders, rendering the nest conditions between these species very similar. In rearing conditions, tineids are not selective for the origin of food and readily feed on mammal hairs too. It is more likely that *Monopis jussii* has been reared mostly from the nests of the Boreal owl just because it is a more common owl species within the moth's main distribution in Finland than either of the two *Strix* species present in Finland. Further rearing experiments, optimally systematically from different species of birds, would bring additional valuable information on the habitat requirements of *M. jussii* and several other species of Tineidae.

Monopis laevigella has a Holarctic distribution (Landry and Pohl 2018, Gaedike 2019). Many specimens of this species have been barcoded from the Nearctic region, both from Canada and the U.S.A. They fall in two clusters, both of which are highly distinct from the clade consisting of *M. jussii* and the Palearctic *M. laevigella* (data only partially public in BOLD). In the Neighbor-Joining trees neither of these clusters is placed as sister to the Palearctic *M. laevigella* + *M. jussii* clade, suggesting that they represent distinct taxa and even that their closest relative is not *M. laevigella*. However, due to the limited phylogenetic information content of the DNA barcode region, verification of both scenarios requires more rigorous and thorough taxonomic and phylogenetic scrutiny.

Acknowledgements

We are grateful to Leif Aarvik, Reinhard Gaedike, Peter Buchner, Bob Heckford, and Juhani Itämies for providing information and help with many kinds of matters during the preparation of this study. DNA barcoding was conducted at the Centre for Biodiversity Genomics, to whose staff we are grateful for their continuous support. Thomas Pape, Natural History Museum of Denmark, kindly advised on questions about nomenclature. Sequencing was financially supported by the Academy of Finland, Kone foundation and Finnish Cultural foundation through grants to the Finnish Barcode of Life project and furthermore supported by the Promotion of Educational Policies, University and Research Department of the Autonomous Province of Bolzano - South Tyrol with funds to the projects “Genetische Artabgrenzung ausgewählter arktalpiner und boreomontaner Tiere Südtirols” and “Erstellung einer DNA-Barcode-Bibliothek der Schmetterlinge des zentralen Alpenraumes (Süd-, Nord- und Osttirol)”. Andrew Liston kindly checked the English language. Finally, we are indebted to Bengt Å. Bengtsson, an anonymous reviewer, and Erik J. van Nieukerken for many useful comments on the earlier version of this paper.

References

- Davis DR, Robinson GS (1999) The Tineoidea and Gracillarioidea. In: Kristensen NP (Ed.) Lepidoptera, moths and butterflies. Vol 1: Evolution, systematics and biogeography. Handbook of Zoology 4(35), Walter de Gruyter, Berlin, New York, 91–119.
- Denis M, Schiffermüller I (1775) Ankündigung eines systematischen Werkes von den Schmetterlingen der Wienergegend herausgegeben von einigen Lehrern am k. k. Theresianum. Augustin Bernardi, Wien, 322 pp. [pls. frontispiece, 1–1b]
- Dinca V, Lukhtanov VA, Talavera G, Vila R (2011) Unexpected layers of cryptic diversity in wood white *Leptidea* butterflies. Nature Communications 2: 324. <https://doi.org/10.1038/ncomms1329>
- Gaedike R (2015) Tineidae I (Dryadaulinae, Hapsiferinae, Euplocaminae, Scardiinae, Nematopogoninae and Meessinae). In: Nuss M, Karsholt O, Huemer P (Eds) Microlepidoptera of Europe 7. Brill, Leiden/Boston, 308 pp. <https://doi.org/10.1163/9789004289161>
- Gaedike R (2019) Tineidae II (Myrmecozelinae, Perissomasticinae, Tineinae, Hieroxestinae, Teichobiinae and Stathmopolitinae). In: Karsholt O, Mutanen M, Nuss M (Eds) Microlepidoptera of Europe 9. Brill, Leiden/Boston, 248 pp. <https://doi.org/10.1163/9789004387515>
- Haworth AH (1828) Lepidoptera Britannica, sistens digestionem novam insectorum Lepidopterorum quae in magna Britannica reperiuntur, larvarum pabulo, temporeque pascendi; expansion alarum, mensibusque volandi, synonymis atque locis observationibusque variis vol 4. J. Murray, London, 513–609. <https://doi.org/10.1080/14786442808674667>
- Hübner J (1796–1836) Sammlung europäischer Schmetterlinge 8. Augsburg. (Tineae-Schaben): 1–78 [1796], 71 pls 1–71 (1796–[1836]).
- Hübner J (1816–1825) Verzeichniss bekannter Schmettlinge. Augsburg, 431 pp. <https://doi.org/10.5962/bhl.title.48607>
- Huemer P, Haxaire J, Lee KM, Mutanen M, Pekarsky O, Ronkay L (2020) Revision of the genus *Hoplodrina* Boursin, 1937 (Lepidoptera, Noctuidae, Xyleninae). I. *Hoplodrina octogenaria* (Goeze, 1781) and its sister species *H. alsinides* (Costantini, 1922) sp. rev. in Europe. ZooKeys 927: 75–97. <https://doi.org/10.3897/zookeys.927.51142>
- Huemer P, Karsholt O (2010) Gelechiidae II. (Gelechiinae: Gnorimoschemini). Microlepidoptera of Europe vol 6. Apollo Books. Stenstrup, Denmark, 586 pp. https://doi.org/10.1163/9789004260986_002
- Huemer P, Karsholt O, Aarvik L, Berggren K, Bidzilya A, Junnilainen J, Landry J-F, Mutanen M, Nupponen K, Segerer A, Šumpich J, Wieser C, Wiesmair B, Hebert PDN (2020) DNA barcode library for European Gelechiidae (Lepidoptera) suggests greatly underestimated species diversity. ZooKeys 921: 141–157. <https://doi.org/10.3897/zookeys.921.49199>
- ICZN (1999) International Code of Zoological Nomenclature, Fourth Edition. International Trust for Zoological Nomenclature, The Natural History Museum London, London, 306 pp.
- Kozlov MV, Mutanen M, Lee KM, Huemer P (2017) Cryptic diversity in the long-horn moth *Nemophora degeerella* (Lepidoptera: Adelidae) revealed by morphology, DNA barcodes and genome-wide ddRAD-seq data. Systematic Entomology 42: 329–346. <https://doi.org/10.1111/syen.12216>

- Kumar S, Stecher G, Tamura K (2016) MEGA7: Molecular evolutionary genetics analysis version 7.0. *Molecular Biology and Evolution* 33: 1870–1874. <https://doi.org/10.1093/molbev/msw054>
- Landry JF, Pohl GR (2018) 16. Family Tineidae Latreille, 1810. In: Pohl GR et al. Annotated Checklist of the Moths and Butterflies (Lepidoptera) of Canada and Alaska. Pensoft series Faunistica 118: 46–50.
- Mutanen M, Aarvik L, Huemer P, Kaila L, Karsholt O, Tuck K (2012a) DNA barcodes reveal that the widespread European tortricid moth *Phalonidia manniana* (Lepidoptera: Tortricidae) is a mixture of two species. *Zootaxa* 3262: 1–21. <https://doi.org/10.11646/zootaxa.3262.1.1>
- Mutanen M, Aarvik L, Landry JF, Segerer A, Karsholt O (2012b) *Epinotia cinereana* (Haworth, 1811) bona sp., a Holarctic tortricid distinct from *E. nisella* (Clerck, 1759) (Lepidoptera: Tortricidae: Eucosmini) as evidenced by DNA barcodes, morphology and life history. *Zootaxa* 3318: 1–25. <https://doi.org/10.11646/zootaxa.3318.1.1>
- Mutanen M, Kaila L, Tabell J (2013) Wide-ranging barcoding aids discovery of one-third increase of species richness in presumably well-investigated moths. *Scientific Reports* 3: 2901. <https://doi.org/10.1038/srep02901>
- Mutanen M, Kivelä SM, Vos RA, Doorenweerd C, Ratnasingham S, Hausmann A, Huemer P, Dincă V, van Nieukerken EJ, Lopez-Vaamonde C, Vila R, Aarvik L, Decaëns T, Efetov KA, Hebert PDN, Johnsen A, Karsholt O, Pentinsaari M, Rougerie R, Segerer A, Tarmann G, Zahiri R, Godfray HCJ (2016) Species-Level Para- and Polyphyly in DNA Barcode Gene Trees: Strong Operational Bias in European Lepidoptera. *Systematic Biology* 65: 1024–1040. <https://doi.org/10.1093/sysbio/syw044>
- Peña C, Malm T (2012) VoSeq: a voucher and DNA sequence web application. *PLoS One* 7(6), e39071. <https://doi.org/10.1371/journal.pone.0039071>
- Robinson GS (1976) The preparation of slides of Lepidoptera genitalia with special reference to the Microlepidoptera. *Entomologist's Gazette* 27: 127–132.
- Robinson GS (2009) Biology, distribution and diversity of tineid moths. Natural History Museum, Kuala Lumpur, 143 pp.
- Robinson G, Nielsen ES (1993) Tineid genera of Australia (Lepidoptera). *Monographs on Australian Lepidoptera* 2. CSIRO Publishing, Melbourne, 344 pp. <https://doi.org/10.1071/9780643105102>
- Scott J (1858) A supposed new species of *Tinea* allied to *rusticella*. *The Zoologist* 16: 5964–5965.
- Segerer AH, Haslberger A, Grünwald T (2010) Occurrence of *Olethreutes subtilana* (Falkovitsh, 1959) in Central Europe uncovered by DNA barcoding (Tortricidae: Olethreutinae). *Nota Lepidopterologica* 33: 209–218.
- Speta F (2003) Ignaz Schiffermüller (1727–1806) – eine Biographie. *Denisia* 8: 11–14.
- Stephens JF (1834) Illustrations of British Entomology or, a Synopsis of Indigenous Insects: containing their generic and specific distinctions with an account of their metamorphoses, times of appearance, localities, food, and economy, as far as practicable. London. *Insecta Haustellata* 4: 1–436, pls 23–41.
- Strand E (1900) Einige arktische Aberrationen von Lepidopteren. *Entomologische Nachrichten* 26: 225–226.

- Šumpich J, Liška J (2011) In: Šumpich, J.: Motýli Národních parku Podyjí a Thayatal. Die Schmetterlinge der Nationalparke Podyjí und Thayatal. Správa Národného parku Podyfí, Znojmo, 1–488.
- Wahlberg N, Wheat CW (2008) Genomic outposts serve the phylogenomic pioneers: designing novel nuclear markers for genomic DNA extractions of Lepidoptera. *Systematic Biology* 57: 231–242. <https://doi.org/10.1080/10635150802033006>
- Zeller PC (1852) Die Schaben mit langen Kiefertastern. *Linnaea Entomologica* 6: 81–197.