

DOI: 10.1038/s41467-018-04599-6

OPEN

Author Correction: ID3 regulates the MDC1-mediated DNA damage response in order to maintain genome stability

Jung-Hee Lee^{1,2}, Seon-Joo Park^{1,3}, Gurusamy Hariharasudhan¹, Min-Ji Kim¹, Sung Mi Jung¹, Seo-Yeon Jeong^{1,2}, In-Youb Chang⁴, Cheolhee Kim⁵, Eunae Kim⁵, Jihyeon Yu⁶, Sangsu Bae⁶ & Ho Jin You^{1,7}

Correction to: *Nature Communications* <https://doi.org/10.1038/s41467-017-01051-z>, published online 12 October 2017

This Article contains errors in Figs. 3, 4 and 7, for which we apologize. In Fig. 3, panel 'b', the 0.5 h time point after Ku55933 treatment images were inadvertently replaced with duplicates of the 3 h time point after Ku55933 treatment images in Fig. 3b. Additionally, in panel 'b', the 0.5 h time point after Nu7026 treatment images were inadvertently replaced with duplicates of the 180 min time point after siMDC1 treatment images in Fig. 3d. The correct version of this figure appears below as Fig. 1. The raw data associated with this experiment are provided as a separate Supplementary Data 1 file.

¹Laboratory of Genomic Instability and Cancer Therapeutics, Cancer Mutation Research Center, Chosun University School of Medicine, Gwangju 501-759, Republic of Korea. ²Department of Cellular and Molecular Medicine, Chosun University School of Medicine, Gwangju 501-759, Republic of Korea. ³Department of Premedical Sciences, Chosun University School of Medicine, Gwangju 501-759, Republic of Korea. ⁴Department of Anatomy, Chosun University School of Medicine, Gwangju 501-759, Republic of Korea. ⁵College of Pharmacy, Chosun University, 375 Seosuk-dong, Gwangju 501-759, Republic of Korea. ⁶Department of Chemistry, Hanyang University, Seoul 04763, Republic of Korea. ⁷Department of Pharmacology, Chosun University School of Medicine, Gwangju 501-759, Republic of Korea. Correspondence and requests for materials should be addressed to J.-H.L. (email: jhlee75@chosun.ac.kr) or to H.J.Y. (email: hjyou@chosun.ac.kr)

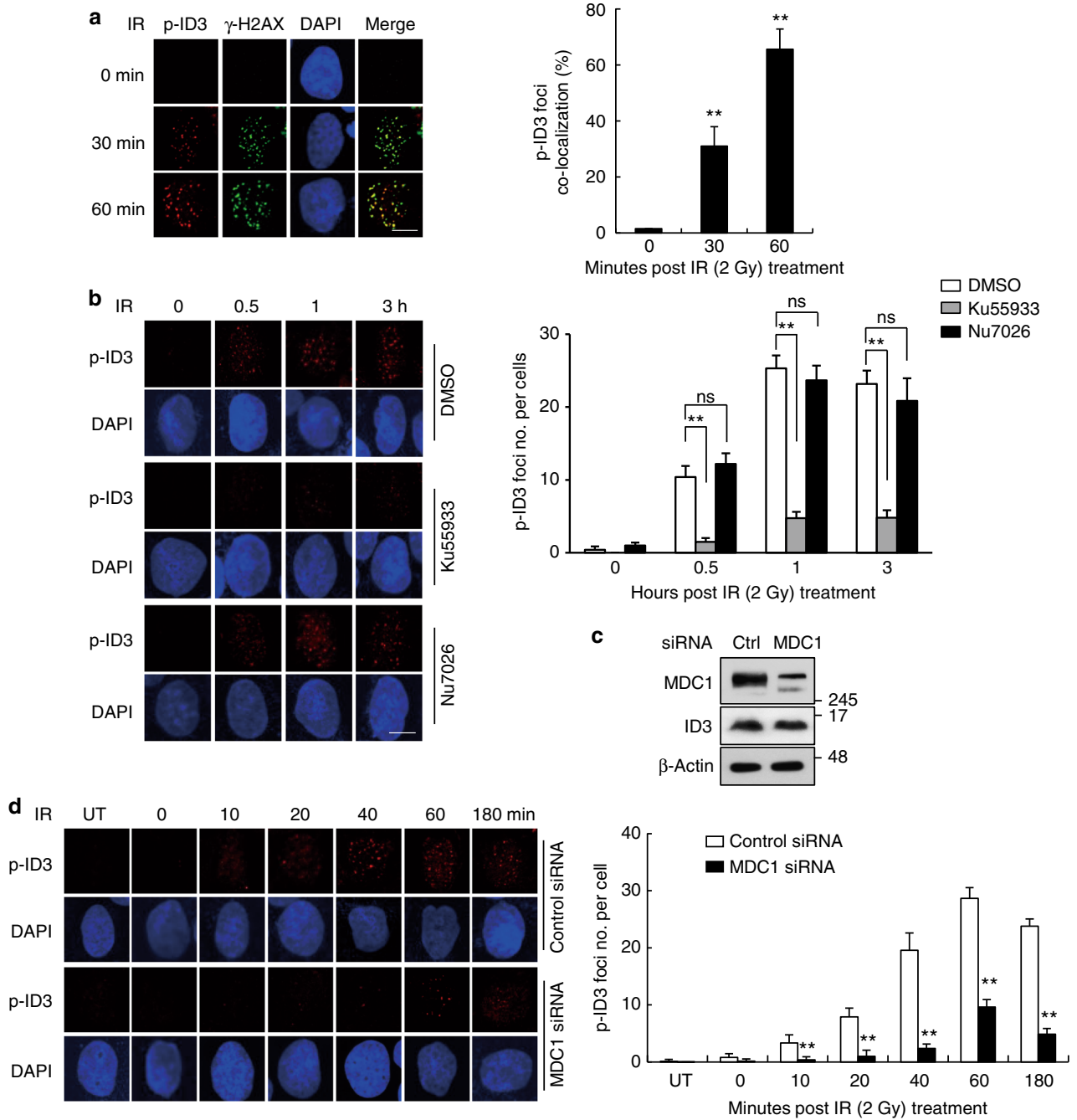


Fig. 1 .

In Fig. 4, panel 'g', RNF168 foci in U2OS cell images were inadvertently replaced with duplicates of RNF168 foci in HeLa cell images in Fig. 4f. The correct version of this figure appears below as Fig. 2. The raw data associated with this experiment are provided as a separate Supplementary Data 2 file.

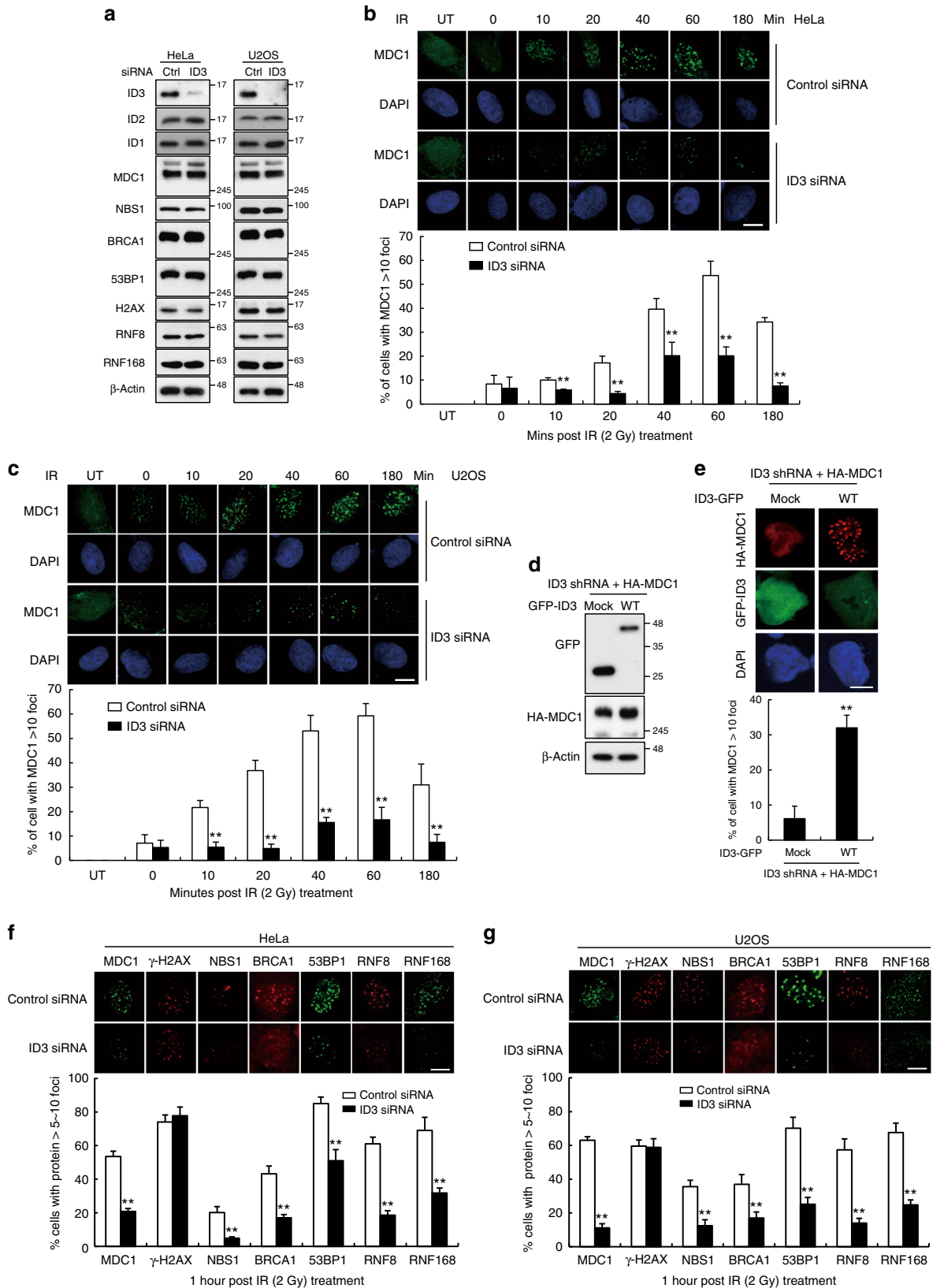


Fig. 2.

In Fig. 7, panel 'b', the DAPI images 0.5 h after IR under siID3 treatment were inadvertently replaced with DAPI images of a different field of view from the same experiment. Additionally, in panel 'i', the shID3 mock-treated GFP-ID3 cells image was inadvertently replace with duplications of the shID3 mock-treated GFP-ID3 cells image in Fig. 7g. The correct version of this figure appears below as Fig. 3. The raw data associated with this experiment are provided as a separate Supplementary Data 3 file.

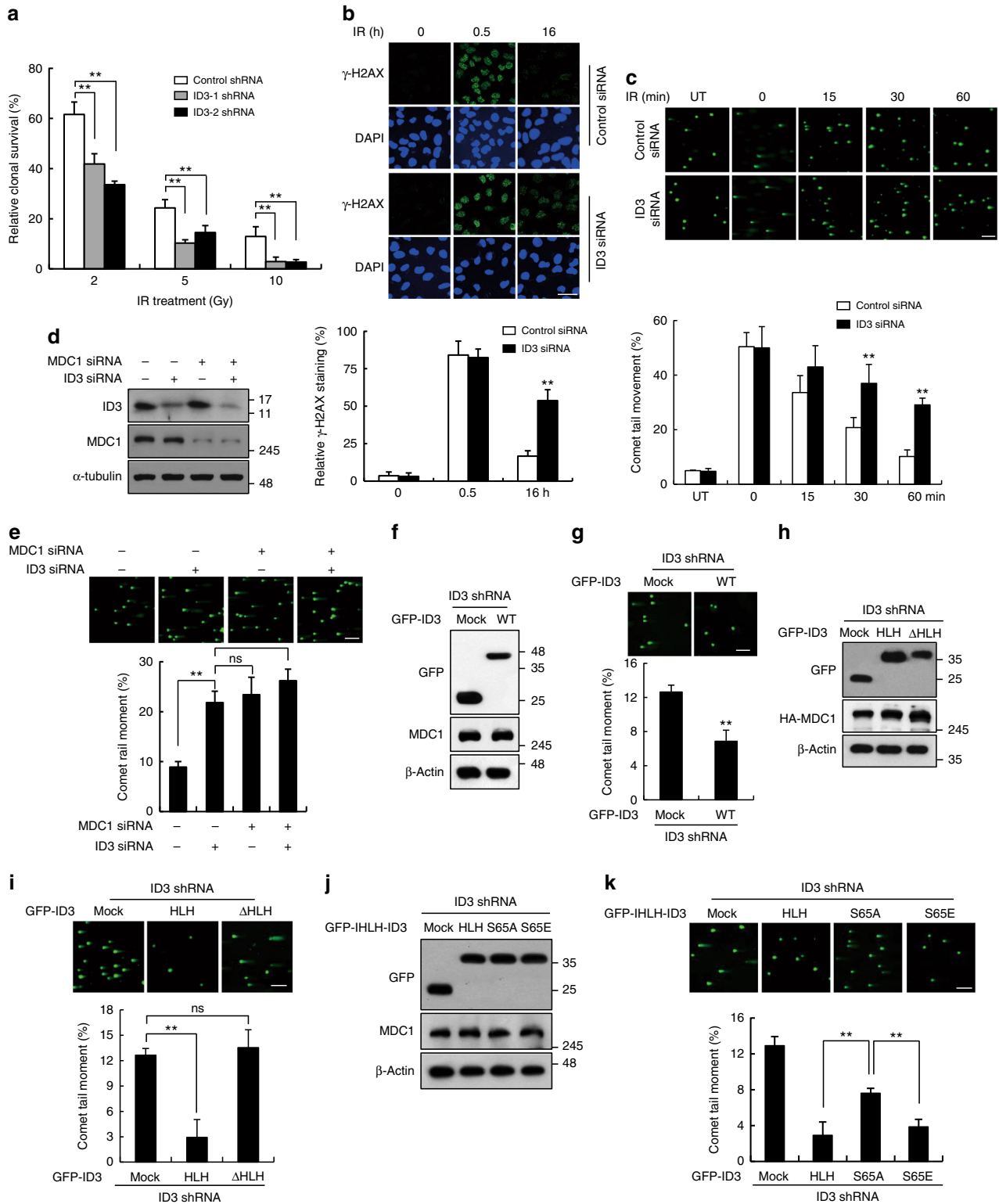


Fig. 3 .



Open Access This article is licensed under a Creative Commons Attribution 4.0 International License, which permits use, sharing, adaptation, distribution and reproduction in any medium or format, as long as you give appropriate credit to the original author(s) and the source, provide a link to the Creative Commons license, and indicate if changes were made. The images or other third party material in this article are included in the article's Creative Commons license, unless indicated otherwise in a credit line to the material. If material is not included in the article's Creative Commons license and your intended use is not permitted by statutory regulation or exceeds the permitted use, you will need to obtain permission directly from the copyright holder. To view a copy of this license, visit <http://creativecommons.org/licenses/by/4.0/>.

© The Author(s) 2018