



# The Relation Between Common Carotid Artery Diameter and Central Venous Pressure for Assessment of Intravascular Fluid Status after Major Surgeries; an Observational Study

Samaa A Kasem Rashwan <sup>1,\*</sup>, Ashraf Abd Elmawgood Bassiouny <sup>2</sup>, Ahmed A Badawy <sup>2</sup> and Ahmed Rabea Mohammed <sup>1</sup>

<sup>1</sup>Faculty of Medicine, Beni-Suef University, Beni-Suef, Egypt

<sup>2</sup>Faculty of Medicine-Cairo University, Cairo, Egypt

\*Corresponding author: Faculty of Medicine, Beni-Suef University, Postal Code: 62511, Beni-Suef, Egypt. Tel: +20-822318605 Email: samaarashwan1971@gmail.com

Received 2020 May 17; Revised 2020 June 09; Accepted 2020 June 14.

## Abstract

**Objectives:** The current study aimed to find the relation between the changes in the common carotid artery (CCA) diameter and the central venous pressure (CVP) in response to a fluid challenge in spontaneously breathing adult patients.

**Methods:** This study included 65 adult patients aged 20 - 60 years who were admitted to the surgical ICU. The CCA diameter and CVP were measured before and after fluid challenge, and the percentage of increase in the CCA diameter and CVP were calculated. The correlation was assessed between changes in the CVP and CCA diameter.

**Results:** The CCA diameter before fluid administration had a significant strong positive correlation to the CVP ( $r = 0.8$ ,  $P$  value  $< 0.001$ ); the increase in the CCA diameter after fluid administration had a significant moderate positive correlation with the increase in the CVP ( $r = 0.4$ ,  $P$  value  $< 0.001$ ). The percentage of increase in CCA diameters was positively correlated to the percentage of increase in CVP ( $r = 0.589$ ,  $P$  value  $= 0.001$ ) following fluid administration. However, the Receiver Operating Characteristic (ROC) analysis was an invalid test (area under curve 0.513,  $P$  value  $= 0.885$ ).

**Conclusions:** After major surgeries, the change in the CCA diameter was positively correlated with the change in the CVP values in response to fluid administration in the spontaneously breathing adult patients, but the cut-off limit cannot be reached.

**Keywords:** Common Carotid Artery, Ultrasound, Central Venous Pressure

## 1. Background

Fluid management in critically-ill patients is a challenging task. Thus, it is highly important to predict which patient will respond to the volume expansion in order to avoid undesired hypovolemia or fluid overload (1).

In the presence of intravascular fluid depletion, the veins respond to volume expansion by increasing their diameter, but the response of the arterial vessels to volume expansion is not yet known (2-4).

The CVP measurement is used for the estimation of intravascular volume. However; the insertion of central venous catheters is time-consuming (5). Therefore, non-invasive assessment of the intravascular volume using bedside ultrasound became popular (6, 7). Previous studies tried to find a relation between the changes in the CVP and the extra-thoracic vessels via the inferior vena cava (IVC) diameter (8-10), IVC collapsibility index (11), internal jugular (IJV), or femoral vein collapsibility (12), IJV/CCA ratio (13),

but the assessment was difficult in obese and surgical patients, and their results were not reliable.

To the best of our knowledge, Hilbert et al. (14) reported that the diameter of the CCA responds to intravascular volume expansion with significant dilation in fluid demanding patients. They also recommended further studies to confirm their results.

## 2. Objectives

The present study attempted to find a relation between the diameter CCA, an easily accessible extra-thoracic artery, and the change in the CVP after fluid administration to help assess the intravascular volume status and find the cutoff value for the diameter of the CCA that can predict the response to fluid administration.

### 3. Methods

This observational clinical trial was conducted at the surgical intensive care unit (SICU) in Beni-Suef University Hospital, after approval of the local ethics and research committee and the department of the anesthesia, surgical ICU and pain management, and obtaining consents from the patients, it was registered at ClinicalTrials.gov. <https://clinicaltrials.gov/ct2/show/NCT04018443> From August 2019 to January 2020, the study admitted 65 patients of both sex (age 20 - 60 years) from the American Society of Anesthesiology (ASA) physical status II and III who were able to breathe spontaneously, lie supine, and had CVP catheter (subclavian or internal jugular vein) (the CPV catheter was inserted guided by sonography, a chest x-ray was done to confirm its position and to exclude any complications) from following elective or emergency major surgeries (e.g., abdominal exploration for intestinal obstruction, aorto-femoral bypass, and radical cystectomy). It required post-operative close monitoring and assessment of the intravascular volume status; it had signs of depleted intravascular volume as low urine output < 0.5 mL/kg/h for > 2 h, systolic blood pressure < 90 mmHg or tachycardia (heart rate > 100/min) (15).

The exclusion criteria were patients with a history of carotid artery surgery, significant cardiac disease (cardiomyopathy or moderate to severe valvular heart lesion or having systolic and diastolic dysfunction), significant hepatic disease (Child-Pugh score B or C), renal failure, obesity (BMI > 30 kg/m<sup>2</sup>), pulmonary hypertension, the patients who need mechanical ventilation or having unstable vital signs during the process of sonograph (patients on vasoactive drugs) were also excluded.

#### 3.1. Clinical Management

Upon admission to the surgical intensive care unit, the standard monitors were attached, including [5 leads Electrocardiogram (ECG), non-invasive arterial blood pressure, and pulse oximetry]. Heart rate, arterial blood pressure, and oxygen saturation (SPO<sub>2</sub>), invasive arterial blood pressure, and urine output were monitored.

Laboratory investigations were obtained (complete blood count, coagulation profile, liver, and renal function test, and serum electrolytes), chest x-ray, and arterial blood gases (ABG).

#### 3.2. CVP Measurement

While the patient in the supine position the CVP was measured in cmH<sub>2</sub>O using water- manometer at the end-expiration (16), the CVP was measured and recorded by SICU residents unaware of the study protocol and the sonographers were blinded to the CVP readings.

#### 3.3. The CCA Diameter

The CCA was visualized with the ultrasound transducer 12 MHz linear probe using a short-axis view perpendicular to the skin in a transverse plane on the patient's neck lateral to the cricoid cartilage on the contralateral side of the central venous line insertion. While the patient was in a supine position with the head of the bed 30° elevated the diastolic antro-posterior diameter of the CCA was measured in millimeters (mm). The diastolic antro-posterior diameter of the CCA was measured in millimeters (mm) from intimal to intimal edge using the frozen B-Mode image at the end of expiration. The position of the transducer was marked on the skin (each measure was taken three times and the average was recorded; using Philips ultrasound HD5 machine (Philips Ultrasound, Bothell, WA, USA). These measures were done by an anesthesia consultant expert in ultrasound-guided central venous cannulation and trained in measuring the diameter of CCA.

The following data were collected:

- 1) Demographic data: age, sex.
- 2) ASA physical status.
- 3) Type of surgery.

4) Vital signs (heart rate, mean arterial blood pressure): baseline reading after admission to the SICU, then before and after sonographic assessment.

5) CVP (cmH<sub>2</sub>O): Baseline reading, before and after infusion of normal saline solution (30 ml/min till reaching 5ml/kg) and sonographic measurement of CCA diameter.

The percentage increase in the CVP was calculated using the formula:  $[(CVP_{post}/CVP_{pre}) \times 100] - 100$

6) CCA diameter measurements: Baseline measurement after admission, before (diam pre) and after (diam post) infusion of normal saline solution (30 mL/min till reaching 5 mL/kg).

The percentage increase in CCA diameter was calculated using the formula:  $[(diam\ post/diam\ pre) \times 100] - 100$  (14).

#### 3.4. Sample Size Calculation

Considering a type, I error of 0.05, a power of 0.95 and based on a Spearman's rank correlation analysis revealed that the increase in CCA diameter following fluid administration ( $r = 0.53$ ) as extracted from the previous study (14); a minimum sample size of 40 cases was calculated; the study included 65 patients who were admitted to the SICU from August 2019 to January 2020. The sample size was calculated using G\*Power software version 3.1.2 for MS Windows, Franz Faul, Kiel University, Germany.

### 3.5. Statistical Analysis

Data were presented as mean  $\pm$  standard deviation (SD) for the quantitative variables and numbers or percentages for the categorical variables. The changes in hemodynamic parameters were assessed via the *t*-test. The correlations between CVP and CCA diameter were done by Pearson correlation coefficient, and the percentage increase in CCA diameter and CVP was represented using a 4 quadrant scatter plot. Receiver operator characteristic (ROC) analysis was used to determine the optimum cut off value for CCA% to predict CVP  $<$  8. *P* values  $<$  0.05 was considered statistically significant. Computer program IBM SPSS (Statistical Package for the Social Science; IBM Corp, Armonk, NY, USA) release 22 for Microsoft Windows was used for statistical calculations.

## 4. Results

Sixty five patients were admitted to the surgical intensive care unit (SICU) after major surgeries [abdominal exploration for intestinal obstruction (54%), radical cystectomy (25%), aorto-femoral bypass surgeries (21%)] 2 patients were excluded due to hemodynamic instability and needed for vasoactive drugs (Table 1 and Figure 1).

**Table 1.** Demographic Data of the Patients and Type of Surgery (N = 63)<sup>a</sup>

Demographic Data and Type of Surgery	Values
Age, y	48 $\pm$ 8.6
Gender (male/female)	40/23
ASA status (II/III)	21/42
<b>Procedure</b>	
Abdominal exploration for Intestinal obstruction	34 (54%)
Major vascular surgery	13 (21%)
Radical cystectomy	16 (25%)

<sup>a</sup>Values are expressed as mean  $\pm$  SD or No. (%).

The mean of the heart rate (bpm) on admission to the SICU was 105  $\pm$  8, and significantly decreased from 103  $\pm$  8 to 84  $\pm$  7 after fluid administration (*P*  $<$  0.001) while the mean of MAP (mmHg) was 56  $\pm$  5.9 on admission and significantly increased from 57  $\pm$  5.7 to 63  $\pm$  6.2 after fluid administration (*P*  $<$  0.001) (Table 2).

The mean CVP was 3.7  $\pm$  1.7 (cmH<sub>2</sub>O) on admission and significantly increased from 4.1  $\pm$  2 to 8.5  $\pm$  1.4 (cmH<sub>2</sub>O) after fluid administration (*P*  $<$  0.001) (Table 2). Also, the mean diastolic CCA diameter was 5.4  $\pm$  0.6 (mm) on admission and significantly increased from 5.5  $\pm$  0.7 to 6.6  $\pm$  0.5 (mm) after fluid administration (*P*  $<$  0.001) (Table 2).

Pearson correlation analysis showed that the CCA diameter before fluid administration had a significant

strong positive correlation to the CVP (*P*  $<$  0.001, *r* = 0.8) (Figure 2), the increase in CCA diameter after fluid administration had a significant moderate positive correlation with the increase in the CVP (*P*  $<$  0.001, *r* = 0.4) (Figure 3).

Following fluid administration, the mean CCA diameters increased by 21  $\pm$  14 % and the mean CVP increased by 181.5  $\pm$  64.8%; there was a moderate positive correlation (*r* = 0.589, *P*  $<$  0.001) between them as presented by the four-quadrant plot analysis (Figure 4) that evaluated the trending capabilities of the changes in the CCA diameter compared with the CVP. Using ROC analysis to find the accuracy of CCA% to determine the changes in CVP% (CVP  $\geq$  8), the maximum accuracy was 51%, so it was an invalid test (area under curve 0.513, *P* value = 0.885). The overall accuracy of the curve is 51.3%, and this is non-significant from the null of hypothesis, and the cut of limit cannot be determined (Figure 5).

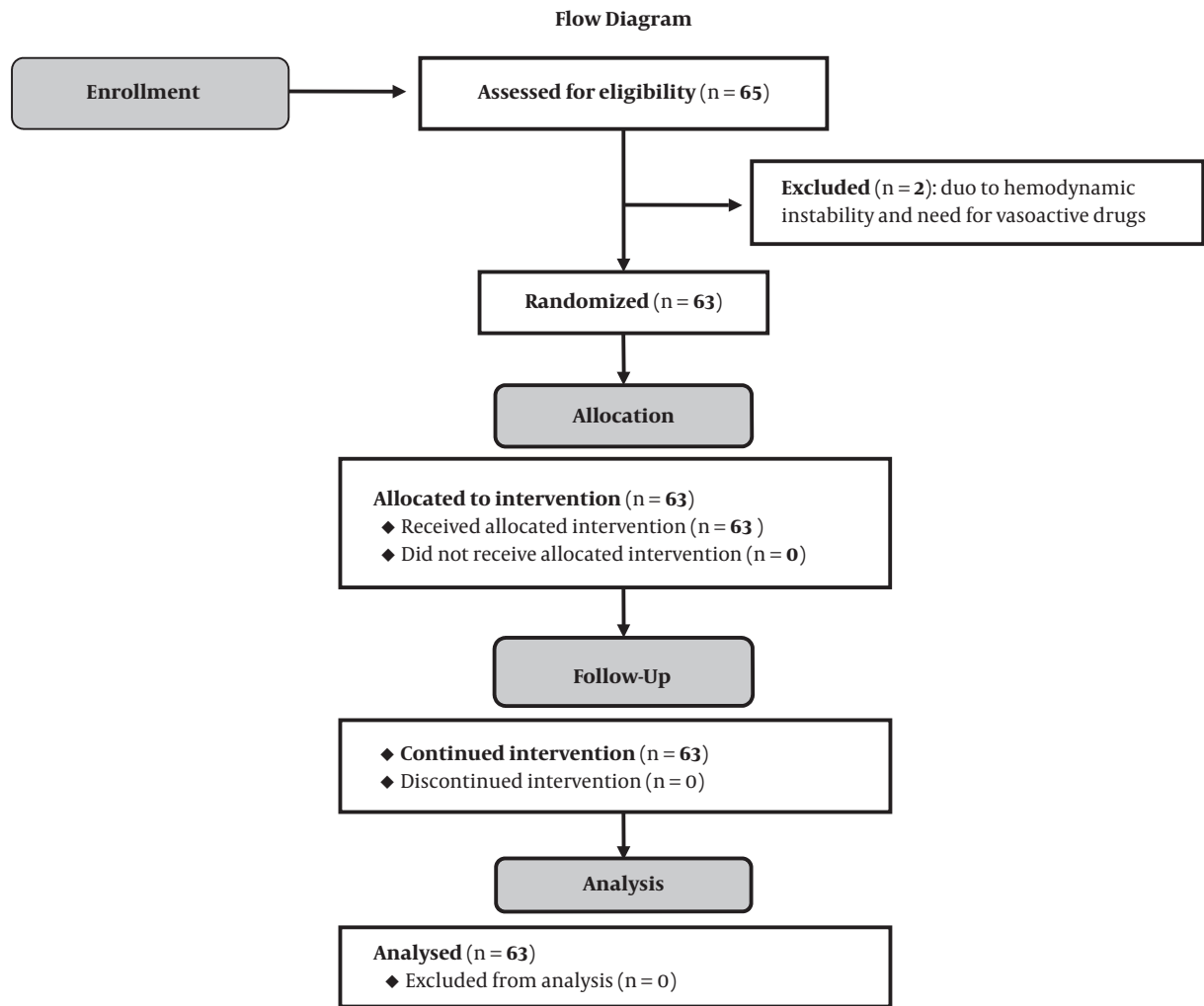
## 5. Discussion

The results of the present study showed that the diameter of the CCA (measured using bedside ultrasound) increased after intravenous fluid expansion; this increase had a moderate positive correlation to the increase in the CVP, but the ROC curve for the changes in the CCA in predicting a CVP  $\geq$  8 cmH<sub>2</sub>O was non-significant (area under curve 0.531, *P* value = 0.885) in spontaneously breathing adult patients who needed close monitoring of the intravascular fluid volume status after major surgeries.

The most commonly used methods for evaluating the intravascular volume are the pulmonary artery catheter (PAC) and CVP. However, PAC is not widely used these days due to the high incidence of complications with its placement (17). Also, CVP catheterization is invasive, expensive, and time-consuming (18).

Bedside ultrasonography is widely used in patient management, especially in emergency and intensive care units (19) because it is simple and noninvasive (20). Some of the noninvasive methods for volume status assessment include an ultrasonographic assessment of IVC diameter (8-10), IVC collapsibility index (11), IJV or femoral vein collapsibility (12), IJV/CCA ratio (13), but no single method is universally accepted since each has its limitations (21).

Following the intravenous fluid administration to correct hypovolemia, 65% - 85% of the fluid is accumulated inside veins (4), and the increased intravascular volume dilates the veins by the intrinsic pressure (22) while the arterial dilatation is caused by endothelial shear stress that causes an increase in nitric oxide (NO) syntheses and a decrease in endothelin secretion (23). Also, the activation of baroreflex is involved in the regulation of arterial diameter (24).



**Figure 1.** Consort flow participant diagram

**Table 2.** Hemodynamic Parameters and CCA Diameter<sup>a</sup>

	On Admission (N = 63)	Before Fluid Bolus (N = 63)	After Fluid Bolus (N = 63)	P Value
HR, bpm	105 ± 8	103 ± 8	84 ± 7 <sup>b</sup>	< 0.001
MAP, mmHg	56 ± 5.9	57 ± 5.7	63 ± 6.2 <sup>b</sup>	< 0.001
CVP, cmH <sub>2</sub> O	3.7 ± 1.7	4.1 ± 2	8.5 ± 1.4 <sup>b</sup>	< 0.001
CCA diameter, mm	5.4 ± 0.6	5.5 ± 0.7	6.6 ± 0.5 <sup>b</sup>	< 0.001

Abbreviations: bpm, beat per minutes; CCA, common carotid artery; cmH<sub>2</sub>O, centimeter water; CVP, central venous pressure; HR, heart rate; MAP, mean arterial pressure; mm, millimeter; mmHg, millimeter mercury.

<sup>a</sup>Values are expressed as mean ± SD.

<sup>b</sup>Highly statistically significant compared to before fluid bolus, P value < 0.001.

In the current study, the mean CCA diameters were increased by 21 ± 14 % following fluid administration (30 mL/min till reaching 5 mL/kg). This coincides with the result of Hilbert et al. (14), who reported that CCA diameters

increased by 5.0 (1.9 - 10.5) % in comparison to its diameter before fluid bolus.

The mean diastolic CCA diameter (mm) was 5.5 ± 0.7 before fluid administration then increased significantly to

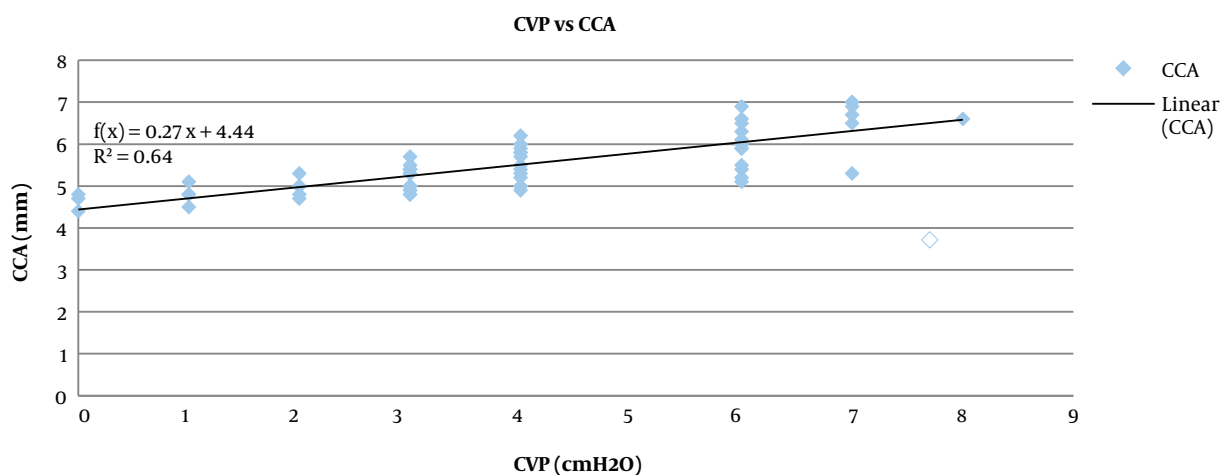


Figure 2. Showing the correlation between CVP and CCA diameter before fluid ( $r = 0.8, P < 0.001$ )

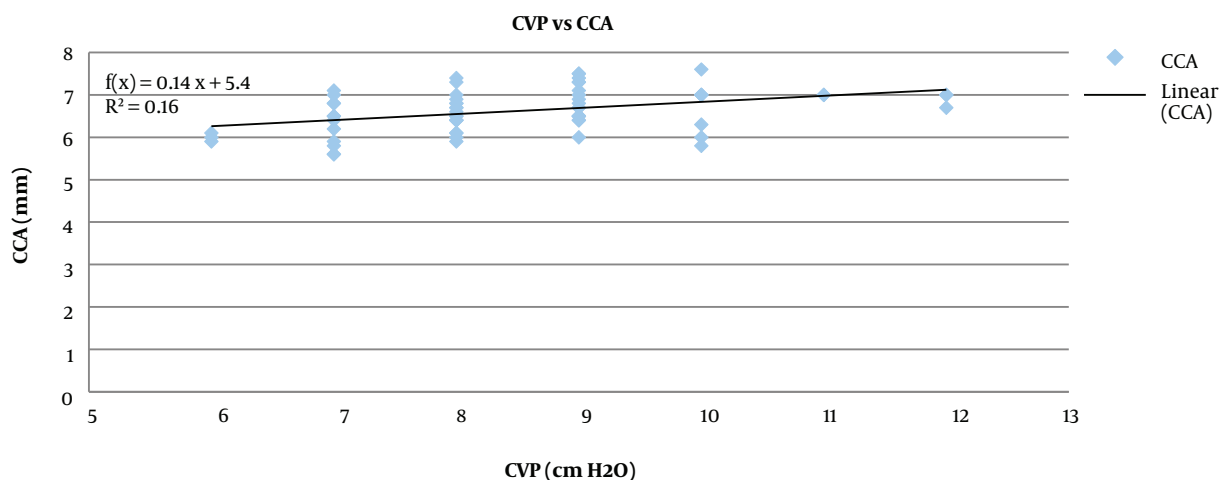


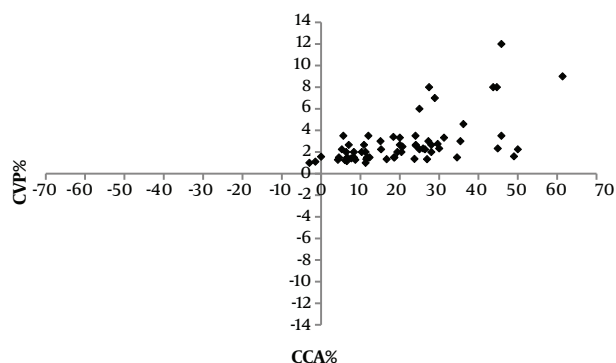
Figure 3. Showing the correlation between CVP and CCA diameter after fluid ( $r = 0.4, P < 0.001$ )

$6.6 \pm 0.5$  after fluid administration ( $P < 0.001$ ). This was also reported by Hilbert et al. (14) who found that the diameter of CCA diameter increased significantly after the crystalloid solution from 6.2 (5.4 - 7.1) mm to 6.7 (5.8 - 7.3) mm ( $P = 0.03$ ) in mechanically ventilated patients after cardiac surgery.

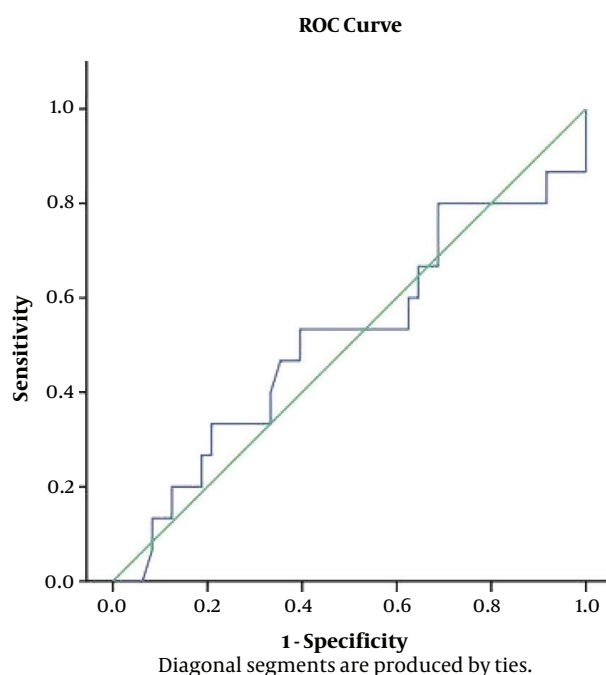
Marik et al. (25) used carotid artery Doppler ultrasound to assess hemodynamically unstable patients and observe a significant increase in the diameter of the CCA in the fluid responders. Bapat et al. (26) reported an increase in the diameter of the brachial artery in response to volume loading by a passive leg raising (PLR) maneuver.

In the present study, Pearson correlation analysis showed that the CCA diameter before fluid administration

had a significant strong positive correlation to the CVP ( $P < 0.001, r = 0.8$ ) and showed that the increase in the CCA diameter after fluid administration had a significant moderate positive correlation with the increase in the CVP ( $P < 0.001, r = 0.4$ ). These findings are contradicted with the results of Bano et al. (13), who reported that there was no significant correlation between CCA diameter and CVP ( $r = 0.281, P = 0.051$ ). This contradiction was because Bano et al. (13) measured the CVP and CCA diameter once; without explaining the relation of these measurements to fluid administration and their study was on a mixed population of the ventilated and non-ventilated patients, while the present study aimed to assess the change in the CVP and CCA diameter in response to fluid on spontaneously



**Figure 4.** Four quadrants scatter plot between CCA% and CVP%



**Figure 5.** Receiver operating characteristic (ROC) curve for the changes in the common carotid artery in predicting a central venous pressure (CVP)  $\geq 8$  cmH<sub>2</sub>O (area under curve 0.531, P value = 0.885)

breathing patients. In the present study, after fluid administration, the mean CCA diameters increased by  $21 \pm 14\%$  and the mean CVP increased by  $181.5 \pm 64.8\%$  and there was moderate positive correlation; ( $r = 0.589$ ,  $P < 0.001$ ) between them. When using ROC analysis to find the accuracy of CCA% to determine the changes in CVP% ( $CVP \geq 8$ ), the maximum accuracy was 51%, so it was an invalid test (area under curve 0.513, P value = 0.885) and the overall accuracy of the curve is 51.3% which was an invalid test to discriminate between normal and abnormal CVP. It cannot be used

as a clinical discriminator, and the cut of limit cannot be determined.

### 5.1. Limitations

It is a single-center study conducted on a limited number of spontaneously breathing patients after major surgeries.

### 5.2. Conclusions

The changes in the CCA diameter is positively correlated with the changes in the CVP values in response to fluid administration, but the cut-off limit cannot be reached. Thus further studies are recommended on multi-centers in different settings and larger population samples to find the cutoff value for the diameter of the CCA that can predict the response to fluid administration.

### Footnotes

**Authors' Contribution:** Samaa A Kasem Rashwan and Ahmed Rabea Mohammed put the design and the protocol and performed the clinical part, and revising of the article. Ashraf Abd Elmawgood Bassiouny and Ahmed A Badawy did writing and revising of the article and revised the data analysis, and collecting the background resources. All authors read and approved the final manuscript.

**Clinical Trial Registration Code:** The clinical trial registration code was NCT04018443.

**Conflict of Interests:** No competing interests declared.

**Ethical Approval:** This observational clinical study was conducted at the Surgical Intensive Care unit (SICU) in Beni-Suef University Hospital after approval of the local ethics and Research Committee (Beni-Suef University (FMBSU), Egypt) and the Department of the Anesthesia, Surgical ICU and pain Management.

**Funding/Support:** The authors received no financial support.

**Informed Consent:** The study was conducted in accordance with the Declaration of Helsinki. Written informed consent was obtained from the patients to participate in this study.

### References

- Zochios V, Wilkinson JN. Assessment of intravascular fluid status and fluid responsiveness during mechanical ventilation in surgical and intensive care patients. *J Intensive Care Soc.* 2011;**12**(4):295-300. doi: [10.1177/175114371101200410](https://doi.org/10.1177/175114371101200410).
- Caille V, Jabot J, Belliard G, Charron C, Jardin F, Vieillard-Baron A. Hemodynamic effects of passive leg raising: an echocardiographic study in patients with shock. *Intensive Care Med.* 2008;**34**(7):1239-45. doi: [10.1007/s00134-008-1067-y](https://doi.org/10.1007/s00134-008-1067-y). [PubMed: 18351322].



3. Guarracino F, Ferro B, Forfori F, Bertini P, Magliacano L, Pinsky MR. Jugular vein distensibility predicts fluid responsiveness in septic patients. *Crit Care*. 2014;**18**(6):647. doi: [10.1186/s13054-014-0647-1](https://doi.org/10.1186/s13054-014-0647-1). [PubMed: [25475099](https://pubmed.ncbi.nlm.nih.gov/25475099/)]. [PubMed Central: [PMC4301660](https://pubmed.ncbi.nlm.nih.gov/PMC4301660/)].
4. Klabunde RE. *Cardiovascular physiology concepts*. 2nd ed. Wolters Kluwer, Philadelphia PA: Lippincott Williams and Wilkins; 2012.
5. Marik PE. Techniques for assessment of intravascular volume in critically ill patients. *J Intensive Care Med*. 2009;**24**(5):329-37. doi: [10.1177/0885066609340640](https://doi.org/10.1177/0885066609340640). [PubMed: [19648183](https://pubmed.ncbi.nlm.nih.gov/19648183/)].
6. Schmidt GA, Koenig S, Mayo PH. Shock: Ultrasound to guide diagnosis and therapy. *Chest*. 2012;**142**(4):1042-8. doi: [10.1378/chest.12-1297](https://doi.org/10.1378/chest.12-1297). [PubMed: [23032454](https://pubmed.ncbi.nlm.nih.gov/23032454/)].
7. Wesson HK, Khan S, Ferrada P. Ultrasound as a tool for fluid status assessment in the trauma and critically ill patient. *Int J Surg*. 2016;**33**(Pt B):190-5. doi: [10.1016/j.ijsu.2015.09.063](https://doi.org/10.1016/j.ijsu.2015.09.063). [PubMed: [26432007](https://pubmed.ncbi.nlm.nih.gov/26432007/)].
8. De Lorenzo RA, Morris MJ, Williams JB, Haley TF, Straight TM, Holbrook-Emmons VL, et al. Does a simple bedside sonographic measurement of the inferior vena cava correlate to central venous pressure? *J Emerg Med*. 2012;**42**(4):429-36. doi: [10.1016/j.jemermed.2011.05.082](https://doi.org/10.1016/j.jemermed.2011.05.082). [PubMed: [22197199](https://pubmed.ncbi.nlm.nih.gov/22197199/)].
9. Ng L, Khine H, Taragin BH, Avner JR, Ushay M, Nunez D. Does bedside sonographic measurement of the inferior vena cava diameter correlate with central venous pressure in the assessment of intravascular volume in children? *Pediatr Emerg Care*. 2013;**29**(3):337-41. doi: [10.1097/PEC.0b013e31828512a5](https://doi.org/10.1097/PEC.0b013e31828512a5). [PubMed: [23426248](https://pubmed.ncbi.nlm.nih.gov/23426248/)].
10. Zhang Z, Xu X, Ye S, Xu L. Ultrasonographic measurement of the respiratory variation in the inferior vena cava diameter is predictive of fluid responsiveness in critically ill patients: systematic review and meta-analysis. *Ultrasound Med Biol*. 2014;**40**(5):845-53. doi: [10.1016/j.ultrasmedbio.2013.12.010](https://doi.org/10.1016/j.ultrasmedbio.2013.12.010). [PubMed: [24495437](https://pubmed.ncbi.nlm.nih.gov/24495437/)].
11. Ilyas A, Ishtiaq W, Assad S, Ghazanfar H, Mansoor S, Haris M, et al. Correlation of IVC diameter and collapsibility index with central venous pressure in the assessment of intravascular volume in critically ill patients. *Cureus*. 2017;**9**(2). e1025. doi: [10.7759/cureus.1025](https://doi.org/10.7759/cureus.1025). [PubMed: [28348943](https://pubmed.ncbi.nlm.nih.gov/28348943/)]. [PubMed Central: [PMC5346017](https://pubmed.ncbi.nlm.nih.gov/PMC5346017/)].
12. Kent A, Patil P, Davila V, Bailey JK, Jones C, Evans DC, et al. Sonographic evaluation of intravascular volume status: Can internal jugular or femoral vein collapsibility be used in the absence of IVC visualization? *Ann Thorac Med*. 2015;**10**(1):44-9. doi: [10.4103/1817-1737.146872](https://doi.org/10.4103/1817-1737.146872). [PubMed: [25593607](https://pubmed.ncbi.nlm.nih.gov/25593607/)]. [PubMed Central: [PMC4286845](https://pubmed.ncbi.nlm.nih.gov/PMC4286845/)].
13. Bano S, Qadeer A, Akhtar A, Ata Ur-Rehman HM, Munawar K, Hussain SW, et al. Measurement of internal jugular vein and common carotid artery diameter ratio by ultrasound to estimate central venous pressure. *Cureus*. 2018;**10**(3). e2277. doi: [10.7759/cureus.2277](https://doi.org/10.7759/cureus.2277). [PubMed: [30949421](https://pubmed.ncbi.nlm.nih.gov/30949421/)]. [PubMed Central: [PMC6440552](https://pubmed.ncbi.nlm.nih.gov/PMC6440552/)].
14. Hilbert T, Klaschik S, Ellerkmann RK, Putensen C, Thudium M. Common carotid artery diameter responds to intravenous volume expansion: An ultrasound observation. *Springerplus*. 2016;**5**(1):853. doi: [10.1186/s40064-016-2595-5](https://doi.org/10.1186/s40064-016-2595-5). [PubMed: [27386302](https://pubmed.ncbi.nlm.nih.gov/27386302/)]. [PubMed Central: [PMC4919186](https://pubmed.ncbi.nlm.nih.gov/PMC4919186/)].
15. Murdoch SD, Cohen AT, Bellamy MC. Pulmonary artery catheterization and mortality in critically ill patients. *Br J Anaesth*. 2000;**85**(4):611-5. doi: [10.1093/bja/85.4.611](https://doi.org/10.1093/bja/85.4.611). [PubMed: [11064621](https://pubmed.ncbi.nlm.nih.gov/11064621/)].
16. Khalil A, Khan A, Hayat A. Correlation of inferior vena cava (IVC) diameter and central venous pressure (CVP) for fluid monitoring in ICU. *Pakistan Armed Forces Med J*. 2015;**65**(2):235-8.
17. Kastrup M, Markewitz A, Spies C, Carl M, Erb J, Grosse J, et al. Current practice of hemodynamic monitoring and vasopressor and inotropic therapy in post-operative cardiac surgery patients in Germany: Results from a postal survey. *Acta Anaesthesiol Scand*. 2007;**51**(3):347-58. doi: [10.1111/j.1399-6576.2006.01190.x](https://doi.org/10.1111/j.1399-6576.2006.01190.x). [PubMed: [17096667](https://pubmed.ncbi.nlm.nih.gov/17096667/)].
18. Donmez O, Mir S, Ozyurek R, Cura A, Kabasakal C. Inferior vena cava indices determine volume load in minimal lesion nephrotic syndrome. *Pediatr Nephrol*. 2001;**16**(3):251-5. doi: [10.1007/s004670000536](https://doi.org/10.1007/s004670000536). [PubMed: [11322373](https://pubmed.ncbi.nlm.nih.gov/11322373/)].
19. Busche C, Busch HJ, Michels G. [Point-of-care sonography in emergency and intensive care medicine]. *Dtsch Med Wochenschr*. 2018;**143**(3):161-4. German. doi: [10.1055/s-0043-115604](https://doi.org/10.1055/s-0043-115604). [PubMed: [29409085](https://pubmed.ncbi.nlm.nih.gov/29409085/)].
20. Keller AS, Melamed R, Malinchoc M, John R, Tierney DM, Gajic O. Diagnostic accuracy of a simple ultrasound measurement to estimate central venous pressure in spontaneously breathing, critically ill patients. *J Hosp Med*. 2009;**4**(6):350-5. doi: [10.1002/jhm.503](https://doi.org/10.1002/jhm.503). [PubMed: [19670356](https://pubmed.ncbi.nlm.nih.gov/19670356/)].
21. Rivers E, Nguyen B, Havstad S, Ressler J, Muzzin A, Knoblich B, et al. Early goal-directed therapy in the treatment of severe sepsis and septic shock. *N Engl J Med*. 2001;**345**(19):1368-77. doi: [10.1056/NEJMoa010307](https://doi.org/10.1056/NEJMoa010307). [PubMed: [11794169](https://pubmed.ncbi.nlm.nih.gov/11794169/)].
22. Bruno RM, Gori T, Ghiadoni L. Endothelial function testing and cardiovascular disease: Focus on peripheral arterial tonometry. *Vasc Health Risk Manag*. 2014;**10**:577-84. doi: [10.2147/VHRM.S44471](https://doi.org/10.2147/VHRM.S44471). [PubMed: [25328403](https://pubmed.ncbi.nlm.nih.gov/25328403/)]. [PubMed Central: [PMC4196841](https://pubmed.ncbi.nlm.nih.gov/PMC4196841/)].
23. Morawietz H, Talanow R, Szibor M, Rueckschloss U, Schubert A, Bartling B, et al. Regulation of the endothelin system by shear stress in human endothelial cells. *J Physiol*. 2000;**525** Pt 3:761-70. doi: [10.1111/j.1469-7793.2000.00761.x](https://doi.org/10.1111/j.1469-7793.2000.00761.x). [PubMed: [10856127](https://pubmed.ncbi.nlm.nih.gov/10856127/)]. [PubMed Central: [PMC2269966](https://pubmed.ncbi.nlm.nih.gov/PMC2269966/)].
24. Girerd X, Chanudet X, Larroque P, Clement R, London G, Safar M. Increased vasodilator response during stimulation of cardiopulmonary baroreceptors in borderline hypertensives. *Clin Exp Pharmacol Physiol Suppl*. 1989;**15**:117-9. doi: [10.1111/j.1440-1681.1989.tb03006.x](https://doi.org/10.1111/j.1440-1681.1989.tb03006.x). [PubMed: [2805441](https://pubmed.ncbi.nlm.nih.gov/2805441/)].
25. Marik PE, Levitov A, Young A, Andrews L. The use of bioimpedance and carotid Doppler to determine volume responsiveness and blood flow redistribution following passive leg raising in hemodynamically unstable patients. *Chest*. 2013;**143**(2):364-70. doi: [10.1378/chest.12-1274](https://doi.org/10.1378/chest.12-1274). [PubMed: [22910834](https://pubmed.ncbi.nlm.nih.gov/22910834/)].
26. Bapat M, Musikantow D, Khmara K, Chokshi P, Khanna N, Galligan S, et al. Comparison of passive leg raising and hyperemia on macrovascular and microvascular responses. *Microvasc Res*. 2013;**86**:30-3. doi: [10.1016/j.mvr.2012.12.003](https://doi.org/10.1016/j.mvr.2012.12.003). [PubMed: [23261755](https://pubmed.ncbi.nlm.nih.gov/23261755/)].