



Laminin and Type IV Collagen Isoform Substitutions Occur in Temporally and Spatially Distinct Patterns in Developing Kidney Glomerular Basement Membranes

Dale R. Abrahamson, Patricia L. St. John, Larysa Stroganova, Adrian Zelenchuk, and Brooke M. Steenhard

Department of Anatomy and Cell Biology and the Kidney Institute, University of Kansas Medical Center, Kansas City, Kansas

Summary

Kidney glomerular basement membranes (GBMs) undergo laminin and type IV collagen isoform substitutions during glomerular development, which are believed to be required for maturation of the filtration barrier. Specifically, GBMs of earliest glomeruli contain laminin $\alpha 1\beta 1\gamma 1$ and collagen $\alpha 1\alpha 2\alpha 1(IV)$, whereas mature glomeruli contain laminin $\alpha 5\beta 2\gamma 1$ and collagen $\alpha 3\alpha 4\alpha 5(IV)$. Here, we used confocal microscopy to simultaneously evaluate expression of different laminin and collagen IV isoforms in newborn mouse GBMs. Our results show loss of laminin $\alpha 1$ from GBMs in early capillary loop stages and continuous linear deposition of laminin bearing the $\alpha 5$ chain thereafter. In contrast, collagen $\alpha 1\alpha 2\alpha 1(IV)$ persisted in linear patterns into late capillary loop stages, when collagen $\alpha 3\alpha 4\alpha 5(IV)$ first appeared in discontinuous, non-linear patterns. This patchy pattern for collagen $\alpha 3\alpha 4\alpha 5(IV)$ continued into maturing glomeruli where there were lengths of linear, laminin $\alpha 5$ -positive GBM entirely lacking either isoform of collagen IV. Relative abundance of laminin and collagen IV mRNAs in newborn and 5-week-old mouse kidneys also differed, with those encoding laminin $\alpha 1$, $\alpha 5$, $\beta 1$, $\beta 2$, and $\gamma 1$, and collagen $\alpha 1(IV)$ and $\alpha 2(IV)$ chains all significantly declining at 5 weeks, but $\alpha 3(IV)$ and $\alpha 4(IV)$ were significantly upregulated. We conclude that different biosynthetic mechanisms control laminin and type IV collagen expression in developing glomeruli. (J Histochem Cytochem 61:706–718, 2013)

Keywords

glomerular filtration barrier, glomerular endothelial cells, podocytes

Introduction

The kidney glomerulus is a capillary tuft at the anterior end of each nephron. Every day in humans, ~180 liters of plasma fluid pass from the blood across the glomerular capillary walls and into the proximal convoluted tubules of nephrons, where most of the filtrate volume is then reabsorbed. Ordinarily, plasma albumin (~68 kDa) and larger proteins, such as the immunoglobulins, do not appreciably penetrate the glomerular capillary wall and enter the filtrate, and these proteins are retained in the circulation instead. Smaller plasma proteins, as well as trace amounts of albumin, cross the glomerular filtration barrier, but these will also usually be reabsorbed by the tubular epithelium, so that essentially protein-free urine will be excreted. However, diseases affecting the glomerular capillary wall often lead to the loss

of large amounts of plasma proteins into the urine, a condition called proteinuria. If this occurs chronically, it usually results in end stage renal failure, requiring dialysis and/or transplantation. The glomerular filtration barrier comprises three interrelated structural elements: the glomerular endothelium with its associated glycocalyx/surface coat; the visceral epithelial cells of Bowman's capsule, which are also called podocytes; and the glomerular basement membrane

Received for publication June 26, 2013; accepted July 25, 2013.

Corresponding Author:

Dale R. Abrahamson, Department of Anatomy and Cell Biology, University of Kansas Medical Center, 3901 Rainbow Blvd., MS 3038, Kansas City, KS 66160 USA.
E-mail: dabrahamson@kumc.edu

(GBM), which is a mat of extracellular matrix lying between the glomerular endothelial cell and podocyte layers (Haroldsson et al. 2008).

Throughout the body, basement membranes are adherent to the basal layers of epithelial cells, including the vascular endothelium, and surround all Schwann cells of peripheral nerves, all muscle cells, and adipocytes, separating these cells from the adjacent stroma. The GBM is unusual in that it is lined by two distinctly different epithelial cell types on opposite surfaces. Fenestrated glomerular endothelial cells line the inner GBM surface and podocytes line the outer GBM surface. Like all basement membranes, the GBM is composed of polymerized networks of laminin and type IV collagen and also contains nidogen and heparan sulfate proteoglycans (Abrahamson 2012; Miner 2012). Unlike most basement membranes, however, the composition of the GBM changes during glomerular development. Specifically, GBMs of the earliest, most immature nephrons contain laminin $\alpha 1\beta 1\gamma 1$ (LM-111) heterotrimers, whereas those of maturing glomeruli contain laminin $\alpha 5\beta 2\gamma 1$ (LM-521), and this is the only laminin isoform found in GBMs of adults (Miner 2011; Abrahamson 2012). Laminin $\alpha 5\beta 1\gamma 1$ (LM-511) has also been shown to occur transiently in immature GBMs (Miner et al. 1997; Miner 2011). Similarly, the most immature GBMs of early nephrons contain networks of collagen $\alpha 1\alpha 2\alpha 1$ (IV), and those of fully mature nephrons contain collagen $\alpha 3\alpha 4\alpha 5$ (IV) (Miner 1998). Post-fixation immunoelectron microscopy has shown that the laminin $\alpha 1$, $\alpha 5$, $\beta 1$, and $\beta 2$ chains are all derived from developing glomerular endothelial cells as well as podocytes (St. John and Abrahamson 2001). On the other hand, immunoelectron microscopy and metanephric grafting experiments show that endothelial cells and podocytes both secrete collagen $\alpha 1\alpha 2\alpha 1$ (IV), but collagen $\alpha 3\alpha 4\alpha 5$ (IV) originates solely from podocytes (Abrahamson et al. 2009).

Reasons that the GBM undergoes laminin and type IV collagen isoform substitutions are not fully understood. However, genetic diseases affecting humans, and those induced in mice, suggest that the GBM isoform transitions are necessary for attainment and maintenance of the highly differentiated state exhibited by glomerular endothelial cells and podocytes and for establishment of the glomerular filtration barrier (Abrahamson 2012). For example, mice with deletion of the *Lama5* gene, which encodes laminin $\alpha 5$, die before birth with neural tube and placental vascular defects, among other problems (Miner et al. 1998), and glomeruli fail to develop in embryonic kidneys of these mutants (Miner and Li 2000). Mutations to the human *LAMA5* gene have not yet been described, probably because they, too, result in embryonic lethality. When *Lamb2* (encoding the laminin $\beta 2$ chain) is knocked out in mice, mutants become massively proteinuric a few weeks after birth, and there is loss of podocyte foot processes and abnormalities in neuromuscular junctions, which is another

site where laminin $\beta 2$ is normally found (Noakes et al. 1995). Mutations to the human *LAMB2* gene have been shown to cause Pierson syndrome, resulting in a familial nephrosis, eye abnormalities, and neonatal respiratory failure (Zenker et al. 2004). Alport syndrome is one of the most extensively studied diseases of the GBM in humans and is caused by mutations to one or more of the *COL4A3*, *COL4A4*, or *COL4A5* genes, which encode the collagen $\alpha 3$ (IV), $\alpha 4$ (IV), and $\alpha 5$ (IV) chains, respectively (Hudson et al. 2003; Gubler 2008). As a result of these mutations, the collagen $\alpha 3\alpha 4\alpha 5$ (IV) network fails to form, and there is retention of collagen $\alpha 1\alpha 2\alpha 1$ (IV) in the GBM. This typically results in focal thickening, thinning, and splitting of the GBM, loss of podocyte foot processes, progressive proteinuria, and in many affected individuals, renal failure. Mice with a genetic deletion of the *COL4A3* gene have proven to be a reliable experimental model of human Alport disease (Cosgrove et al. 1996; Miner and Sanes 1996).

Because the accurate replacement of laminin and type IV collagen isoforms is so crucial for glomerular structure and function, we investigated the substitution of these GBM proteins in detail. For the experiments described here, we directly evaluated the developmental timing and spatial patterns for laminin and collagen IV isoform substitutions in developing mouse GBMs using dual label scanning confocal microscopy. Our results show that, during GBM assembly, the laminin isoform transition preceded that for type IV collagen and that there were segments of laminin-positive basement membrane entirely lacking collagen IV.

Materials & Methods

Immunofluorescence Microscopy

All experiments involving animals were carried out by protocols approved by the University of Kansas Medical Center Institutional Animal Care and Use Committee (Animal Care and Use Committee approval no. 2011-1972) and as stipulated by the National Institutes of Health. Newborn (1–3 days old) and 5- and 8-week-old 129/SvJ mice were killed using deep anesthesia with halothane or isoflurane followed by cervical dislocation and decapitation. Kidneys were removed, immersed in Tissue-Tec O.C.T. Compound (Electron Microscopy Sciences; Hatfield, PA), and frozen in isopentane chilled in a dry ice-acetone bath. Sections, 8- μ m thick, were cut at -20C in a cryostat, picked up on Superfrost Plus microscope slides (Fisher Scientific; Pittsburgh, PA), and air-dried. Sections were fixed with freshly prepared 0.2% paraformaldehyde in phosphate-buffered saline (PBS) for 10 min at room temperature, washed three times with PBS, and then permeabilized by incubation with 0.5% Triton X-100 in PBS for 5 min at room temperature. Slides were washed three times in PBS and double labeled with mixtures of anti-laminin and/or

Table 1. Antibodies Used in This Study.

Antigen	Species/ Clone Name	Dilution	Source/Catalog No. or Reference	Secondary, Source
Collagen $\alpha 1\alpha 2\alpha 1$ (IV)	goat	20 μ g/ml	SouthernBiotech; Birmingham, AL/1340-01	donkey anti-goat IgG Alexa Fluor 488, chicken anti-goat IgG Alexa Fluor 594, Invitrogen
Collagen $\alpha 3\alpha 4\alpha 5$ (IV)	mouse/26-20	50 μ g/ml	Borza, D.-B./Heidet et al. 2003	goat anti-mouse IgG1 Alexa Fluor 488, goat anti-mouse IgG1 Alexa Fluor 594, Invitrogen
Laminin $\alpha 1$	rat/8B3	50 μ g/ml	Abrahamson, D.R./ Abrahamson et al. 1989	chicken anti-rat IgG Alexa Fluor 488, donkey anti-rat IgG Alexa Fluor 594, Invitrogen
Laminin $\alpha 5$	rabbit	1:200 dilution	Miner, J.H./Miner et al. 1997	chicken anti-rabbit IgG Alexa Fluor 488, donkey anti-rabbit IgG Alexa Fluor 594, Invitrogen

anti-collagen IV antibodies (Table 1) for 15 min at room temperature. After washing three times with PBS, slides were then incubated with appropriate secondary antibody mixtures (Table 1) for 15 min and washed three times with PBS. Slides incubated with secondary antibody mixtures alone served as controls. Slides were then coverslipped with ProLong Gold Antifade Reagent plus DAPI (Life Technologies/Molecular Probes; Grand Island, NY) and imaged with a Zeiss LSM 510 laser scanning confocal microscope (Carl Zeiss Microscopy; Thornwood, NY).

Electron Microscopy

For immunoperoxidase electron microscopy, mouse anti-collagen $\alpha 3\alpha 4\alpha 5$ (IV) monoclonal 26-20 IgG (Heidet et al. 2003) was directly conjugated to activated horseradish peroxidase (HRP) using methods previously described (Nakane and Kawaoi 1974). IgG-HRP conjugates (0.2 ml at 1.4 mg/ml) were injected intraperitoneally into newborn mice. Twelve hours later, mice were anesthetized, and kidneys were fixed in situ by cortical injection of 1.6% paraformaldehyde and 3% glutaraldehyde (Karnovsky 1965) in 0.1 M sodium phosphate buffer, pH 7.4. Kidneys were removed, processed for peroxidase histochemistry with diaminobenzidine and hydrogen peroxide as before (Abrahamson and St. John 1992), post-fixed with osmium tetroxide, and embedded in epoxy. Ultrathin sections were briefly stained with lead citrate and examined in a JEOL JEM-1400 transmission electron microscope (JEOL USA; Peabody, MA).

qPCR

Kidneys obtained from 3-day-old ($N=3$) and 5-week-old ($N=3$) mice were promptly immersed in RNAlater RNA stabilization reagent (Qiagen; Valencia, CA) and then stored at -80°C . Total kidney RNA was collected using RNeasy (Qiagen) and incubated with primers designed to hybridize specifically with mouse Lama1, Lama5, Lamb1, Lamb2, Lamc1, Col4a1, Col4a2, Col4a3, Col4a4, Col4a5,

and Col4a6 mRNAs (Table 2), and Quantitect SYBR Green RT-PCR reagents (Qiagen). Products were amplified and quantified in an iCycler (BioRad; Hercules, CA). Relative RNA abundance was calculated using the comparative C_t method (Livak and Schmittgen 2001).

Results

Dual Immunolocalization of Laminin $\alpha 1$ and Laminin $\alpha 5$

When cryosections from newborn mouse kidney were doubly immunolabeled with anti-laminin $\alpha 1$ and anti-laminin $\alpha 5$ IgGs, basement membranes within the vascular clefts of comma- and early S-shaped figures, representing the earliest GBMs, contained predominantly laminin with an $\alpha 1$ chain (Figs. 1A–1C). In contrast, there were only short stretches of laminin $\alpha 5$ labeling found within these same basement membranes (Figs. 1A–1C). However, beginning in the early capillary loop stage, peripheral loop GBMs contained abundant laminin $\alpha 5$ labeling in linear patterns, and the presence of the laminin $\alpha 1$ chain began to fade (Figs. 1A–1F). As capillary loops were added to glomeruli, and in all later stages of glomerular development, GBMs were brightly labeled with anti-laminin $\alpha 5$ in strong linear patterns (Figs. 1–4), and GBMs became completely negative for the laminin $\alpha 1$ chain (Figs. 1G–1I and Fig. 2). Therefore, as seen earlier by immunoperoxidase staining of separate sections (St. John and Abrahamson 2001), these dual label immunofluorescence results from the same section demonstrate that the laminin $\alpha 1$ -to- $\alpha 5$ switch occurred early in glomerular development. Additionally, the downregulation of laminin $\alpha 1$ and upregulation of laminin $\alpha 5$ were abrupt, and there were only short segments of developing GBM within the earliest nephric figures containing laminin $\alpha 1$ and $\alpha 5$ chains simultaneously. In maturing stage glomeruli of newborn mice, as well as in all glomeruli of 8-week-old mice, peripheral loop GBMs contained solely laminin $\alpha 5$ (Fig. 2). In mesangial matrices of maturing glomeruli in newborns, and in fully mature glomeruli of adults, however,

Table 2. qPCR Primers Used in This Study.

Gene Symbol/Accession	Primer Sequence	Product Length (bp)
Lama1/NM_008480.2	FOR: 5'-CCGACAACCTCCTCTTCTACC-3' REV: 5'-TCTCCACTGCGAGAAAGTCA-3'	60
Lama5/NM_001081171.2	FOR: 5'-ACCCAAGGACCCACCTGTAG-3' REV: 5'-TCATGTGTGCGTAGCCTCTC-3'	169
Lamb1/NM_008482.1	FOR: 5'-GGCAAAGTCAAAGTCTCG-3' REV: 5'-CTGGAGGTGTTCCACAGGTC-3'	61
Lamb2/NM_008483.3	FOR: 5'-GTGTGGCTTGCATAGCCCT-3' REV: 5'-TCCGATGACTATTTGGGTTGTCT-3'	122
Lamc1/NM_010683.2	FOR: 5'-TGCCGGAGTTTGTAAATGCC-3' REV: 5'-CTGGTTGTTGTAGTCGGTCAG-3'	185
Col4a1/NM_009931.2	FOR: 5'-CTGGCACAAAAGGGACGAG-3' REV: 5'-ACGTGGCCGAGAATTTACC-3'	238
Col4a2/NM_009932.3	FOR: 5'-TGCTACCCGGAGAAAGGAG-3' REV: 5'-CTTTGCGGCCCTGTAGTCC-3'	106
Col4a3/NM_007734.1	FOR: 5'-GGGACATGTAATACTACTCAAACCTCC-3' REV: 5'-CAGTTGATGGAATAGGTTTTCTGA-3'	91
Col4a3 (alt)/NM_007734.1	FOR: 5'-AGTCCATGCACCGAGTGTC-3' REV: 5'-CAGGCACACCTCGTCCTC-3'	103
Col4a4/NM_007735.1	FOR: 5'-CTGGCTTGAAGGGAGACCT-3' REV: 5'-CTCCTGCATCACCAGGAAGT-3'	69
Col4a4 (alt)/NM_007735.1	FOR: 5'-TGGAGGAGTCTCTGGATTGG-3' REV: 5'-GCTGCCAGGTGACATCAGT-3'	90
Col4a5/NM_007736.4	FOR: 5'-GGAGAACGGGGGTTTCCAG-3' REV: 5'-CTCCCTTGGTTCCATTGCATC-3'	247
Col4a6/NM_053185.1	FOR: 5'-GACCATATGGATCAAAGGAGATAAG-3' REV: 5'-GTGGCCCGGAATACCACT-3'	77
Ppia/NM_008907	FOR: 5'-CAGACGCCACTGTCGCTTT-3' REV: 5'-TGTCTTTGGAACCTTTGTCTGCAA-3'	132

there was partial signal overlap for both laminin $\alpha 1$ and $\alpha 5$ chains (Fig. 2).

Dual Immunolocalization of Laminin $\alpha 5$ and Type IV Collagen

Knowing that laminin isoform transitioning occurred early in glomerular development, we next sought to compare this with type IV collagen expression. When sections were dually labeled with anti-collagen $\alpha 1\alpha 2\alpha 1(IV)$ and anti-laminin $\alpha 5$, vascular cleft GBMs of the earliest nephric figures were positive for collagen $\alpha 1\alpha 2\alpha 1(IV)$ and negative for laminin $\alpha 5$ (Figs. 3A–3C). When capillary loop stage glomeruli were examined, anti-collagen $\alpha 1\alpha 2\alpha 1(IV)$ and anti-laminin $\alpha 5$ both labeled developing peripheral loop GBMs in strong linear patterns with considerable signal overlap (Figs. 3D–3I).

Whereas expression of collagen $\alpha 1\alpha 2\alpha 1(IV)$ occurred within GBMs from the inception of glomerulogenesis, the expression of collagen $\alpha 3\alpha 4\alpha 5(IV)$ was not observed until the capillary loop stage and progressed gradually thereafter as new glomerular capillary loops emerged. Sections dually labeled with anti-laminin $\alpha 5$ and anti-collagen $\alpha 3\alpha 4\alpha 5(IV)$

showed linear, laminin $\alpha 5$ -positive GBMs in developing capillary loops that contained discontinuous segments labeled with anti-collagen $\alpha 3\alpha 4\alpha 5(IV)$ (Figs. 4A–4G). As glomeruli matured and acquired more capillary loops, their GBMs became increasingly positive for anti-collagen $\alpha 3\alpha 4\alpha 5(IV)$ (Figs. 4H–4J). However, compared to the consistent, linear labeling patterns for laminin $\alpha 5$ throughout all capillary loop stage and maturing glomeruli GBMs, collagen $\alpha 3\alpha 4\alpha 5(IV)$ appeared in discontinuous, fragmentary patterns, even in maturing stage glomeruli of newborn kidney (Figs. 4H–4J).

Dual Immunolocalization of Collagen $\alpha 1\alpha 2\alpha 1(IV)$ and Collagen $\alpha 3\alpha 4\alpha 5(IV)$

To compare directly the distribution patterns of the two type IV collagen isoforms, newborn kidney that had been dually labeled with anti-collagen $\alpha 3\alpha 4\alpha 5(IV)$ and anti- $\alpha 3\alpha 4\alpha 5(IV)$ produced some unexpected findings. First, there was almost no signal overlap for these two different collagen IV isoforms either in capillary loop GBMs or in developing mesangial matrices of maturing glomeruli in newborns (Figs. 5 and 6), or in fully mature glomeruli of

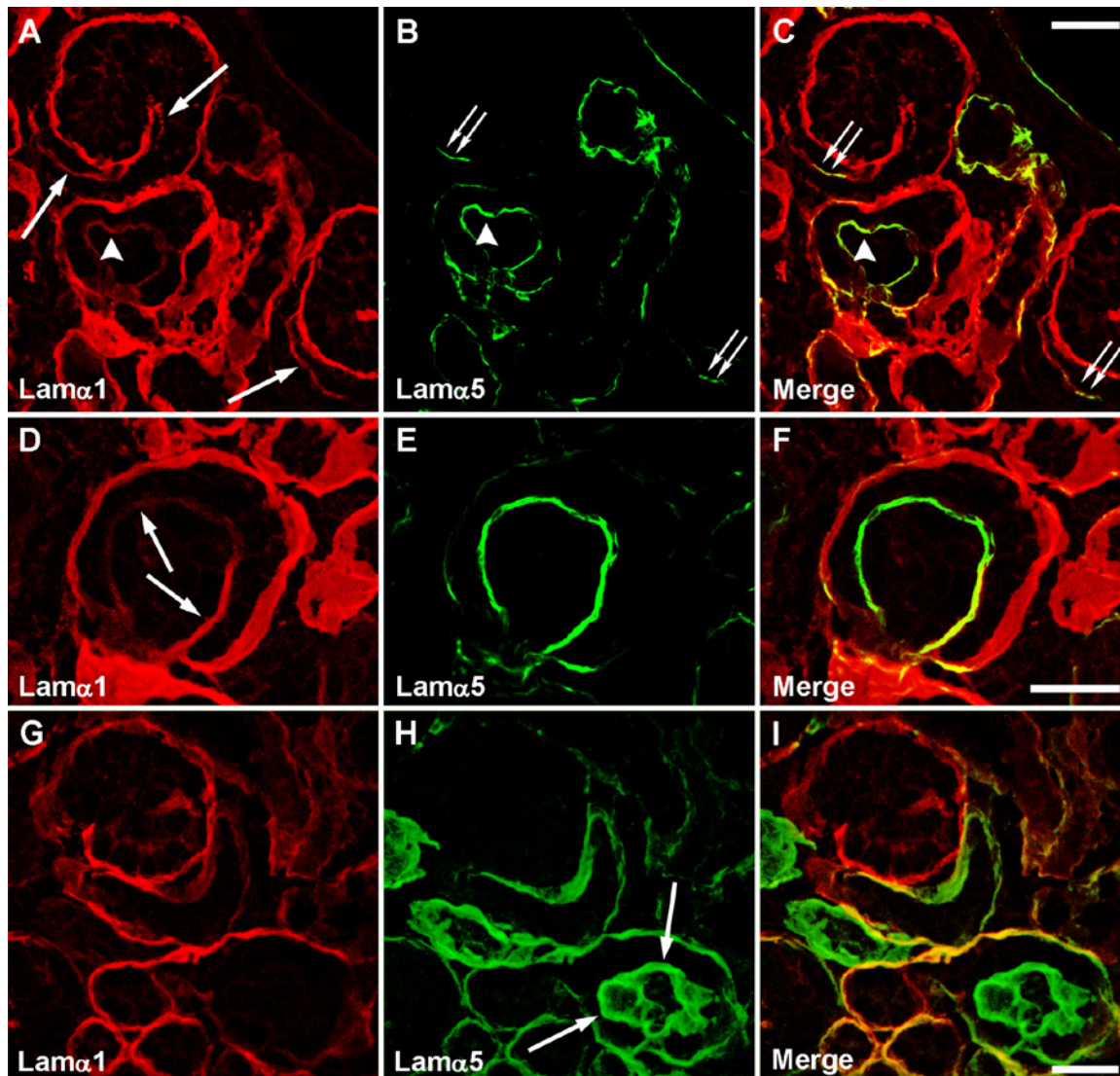


Figure 1. Dual label scanning confocal immunofluorescence microscopy of newborn mouse kidney sections showing the distribution of laminin $\alpha 1$ (Lam $\alpha 1$, red), laminin $\alpha 5$ (Lam $\alpha 5$, green), and both proteins (Merge), in developing glomerular basement membranes (GBMs). (A) Laminin $\alpha 1$ is present throughout the vascular cleft basement membrane (arrows) of comma- and S-shaped glomeruli. In contrast, only short stretches of these same basement membranes also contain laminin $\alpha 5$ (double arrows in B and C). GBMs of early capillary loop stage glomeruli contain both laminin α chains simultaneously (arrowheads in A–C), but the signal for laminin $\alpha 1$ appears to fade as glomerular development progresses (compare arrowed sites in D). (G–I) As additional capillary loops form, GBMs contain abundant laminin $\alpha 5$ (arrows) but laminin $\alpha 1$ is absent. Bars = 20 μm .

adult, 8-week-old mice (Figs. 6I–6K). Second, collagen $\alpha 3\alpha 4\alpha 5(\text{IV})$ was again seen only in discontinuous patterns in peripheral loop GBMs of developing glomeruli (Figs. 5 and 6A–6H). Third, when these GBMs were examined carefully, there were overt gaps in labeling where there was a complete absence of type IV collagen in the GBM altogether (Figs. 6A–6H). When fully mature glomeruli of 8-week-old mice were examined, however, capillary loop GBMs were now completely labeled with anti-collagen $\alpha 3\alpha 4\alpha 5(\text{IV})$ in continuous, linear patterns, whereas collagen $\alpha 1\alpha 2\alpha 1(\text{IV})$ was seen only in mesangial matrices (Figs. 6I–6K). When slides of developing or mature kidney

were incubated with mixtures of secondary antibodies alone as controls, all of the sections were consistently negative.

Immunoelectron Microscopic Localization of Collagen $\alpha 3\alpha 4\alpha 5(\text{IV})$

To extend these findings further, we injected anti-collagen $\alpha 3\alpha 4\alpha 5(\text{IV})$ IgG-HRP conjugates into newborn mice, and kidneys were fixed and processed for peroxidase histochemistry and electron microscopy. As shown in Fig. 7A, there was a complete absence of HRP reaction product in most GBMs of early capillary loop stage glomeruli, which

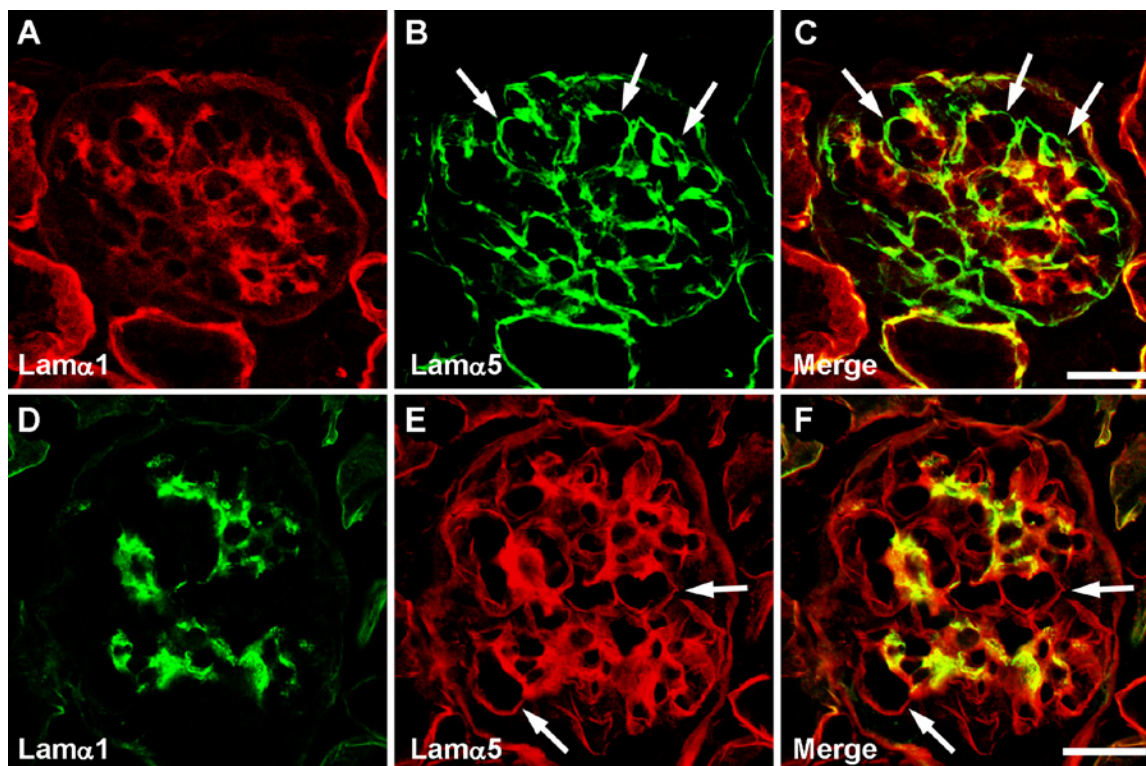


Figure 2. Maturing stage glomerulus from a newborn mouse (A–C) and fully mature glomerulus from an 8-week-old mouse (D–F), dually immunolabeled for laminin $\alpha 1$ and laminin $\alpha 5$, as indicated. In both cases, peripheral loop glomerular basement membranes contain only laminin $\alpha 5$ (arrows), whereas mesangial matrices contain laminin $\alpha 1$ and $\alpha 5$ (yellow in merged images C and F). Bars = 20 μ m.

was consistent with our immunofluorescence results showing no immunoreactivity for anti-collagen $\alpha 3\alpha 4\alpha 5(IV)$ in the earliest GBMs. In later capillary loop stages, however, marked by the presence of forming podocyte foot processes, peroxidase reaction product could be observed within developing GBM in patchy, discontinuous patterns (Fig. 7B). In contrast, maturing stage glomeruli contained capillary loop GBMs with linear, almost homogeneous reaction product deposits, although there were lengths where little labeling was present (Fig. 7C). Mesangial matrices, however, were consistently negative for anti-collagen $\alpha 3\alpha 4\alpha 5(IV)$ IgG-HRP (Fig. 7C), which was also consistent with our confocal results showing an absence of this collagen isoform in the mesangium (Fig. 6). As shown previously in control experiments, there is no glomerular binding in mice injected with normal IgG-HRP conjugates (Abrahamson et al. 1989; Abrahamson and St. John 1992). Additionally, previous studies with this particular anti-collagen $\alpha 3\alpha 4\alpha 5(IV)$ IgG-HRP conjugate have shown that it does not bind to GBMs of Alport mouse kidneys, which lack the collagen $\alpha 3\alpha 4\alpha 5(IV)$ network, but does bind to wild-type mouse glomeruli, further documenting its specificity (Abrahamson et al. 2009).

Developmental Changes in Kidney Laminin and Collagen IV mRNAs

To evaluate comparative expression levels for laminin and collagen IV in developing and mature kidney, we undertook a quantitative PCR analysis of mRNAs isolated from 3-day-old and 5-week-old mouse kidneys ($N=3$ at each age). Compared with levels in 3-day-old kidneys, mRNAs encoding Lama1, Lama5, Lamb1, and Lamc1 gene expression were all significantly lower in 5-week-old kidneys, with decreases ranging from ~ 3 -fold to >9 -fold (Fig. 8A). Messenger RNAs encoding Col4a1, Col4a2, Col4a3, Col4a4, Col4a5, and Col4a6 were also evaluated. Messages for Col4a1, Col4a2, and Col4a6 all declined significantly in 5-week-old kidneys (Fig. 8B). By contrast, mRNAs for COL4A3 and COL4A4 were significantly upregulated in 5-week-old kidneys compared to those from 3-day-old mice (~ 6 -fold, Fig. 8B), and this was confirmed using two different sets of primers for these gene products (Table 2).

Discussion

The main findings from this immunolocalization study of developing glomeruli are that the laminin and collagen IV

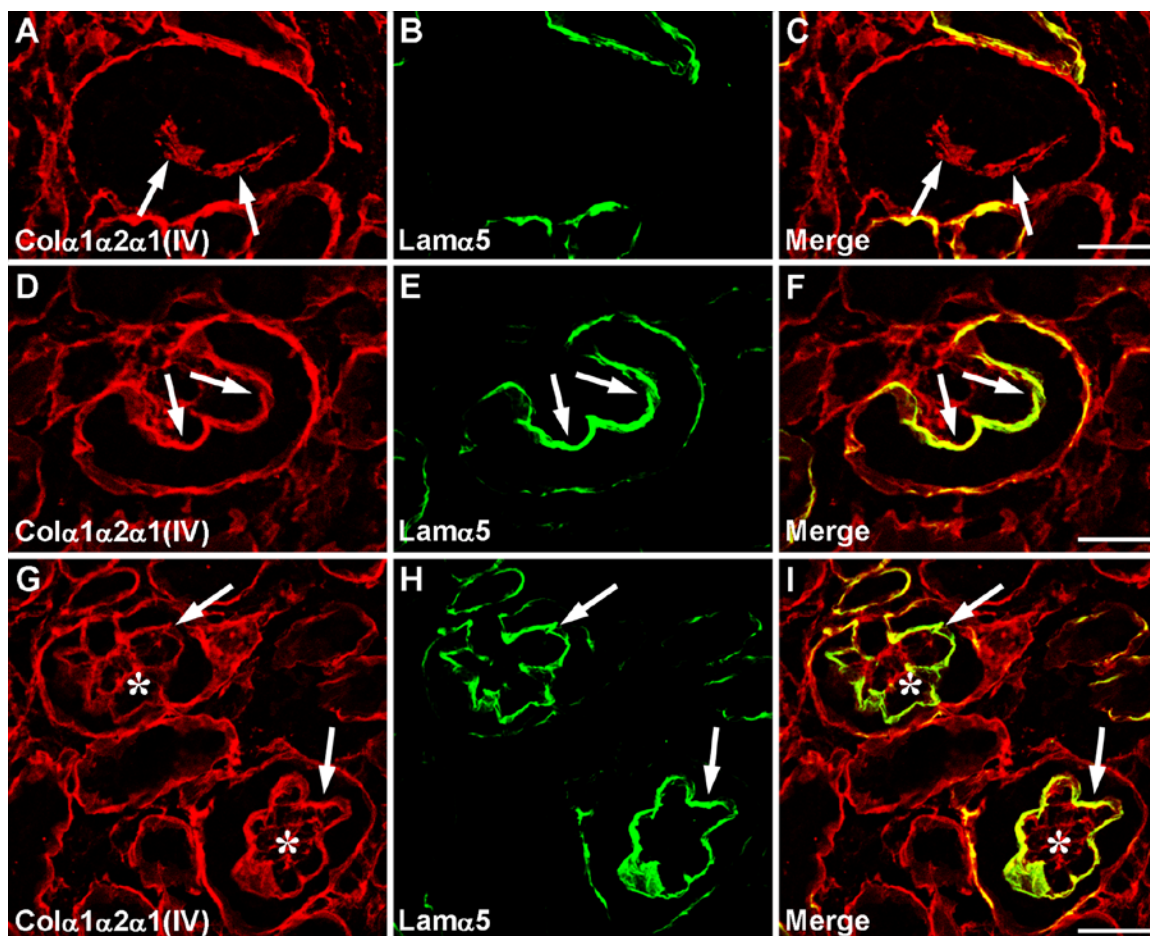


Figure 3. Newborn mouse kidney sections dually immunolabeled with anti-collagen $\alpha 1\alpha 2\alpha 1(\text{IV})$ [$\text{Col}\alpha 1\alpha 2\alpha 1(\text{IV})$, red] and anti-laminin $\alpha 5$ (green). (A–C) The earliest glomerular basement membranes (GBMs) of vascular clefts contain collagen $\alpha 1\alpha 2\alpha 1(\text{IV})$ (arrows) but no laminin $\alpha 5$ (compare with Figs. 1A–1C). (D–F) At the early capillary loop stage, there is overlapping distribution of collagen $\alpha 1\alpha 2\alpha 1(\text{IV})$ with laminin $\alpha 5$ (arrows). (G–I) As capillary loop stage glomeruli continue to progress, collagen $\alpha 1\alpha 2\alpha 1(\text{IV})$ codistributes with laminin $\alpha 5$ in GBMs (arrows). Collagen $\alpha 1\alpha 2\alpha 1(\text{IV})$ can also be seen in developing mesangial matrices (*). Bars = 20 μm .

isoform substitutions occurring during GBM assembly were spatially and temporally distinct. Laminins containing the $\alpha 1$ chain were abruptly replaced with those containing laminin $\alpha 5$ at early capillary loop stages and all new GBMs that formed subsequently contained laminin $\alpha 5$ in continuous, linear patterns. In contrast, collagen IV substitution began later, in more advanced glomeruli, where synthesis of collagen $\alpha 1\alpha 2\alpha 1(\text{IV})$ was slowly replaced by collagen $\alpha 3\alpha 4\alpha 5(\text{IV})$, which appeared in discontinuous, non-linear patterns in GBMs. The two collagen IV isoforms generally did not occur together within the same GBM segments, however, and there were lengths of continuously labeled, laminin $\alpha 5$ -positive GBM that were unlabeled by either anti-collagen $\alpha 1\alpha 2\alpha 1(\text{IV})$ or anti-collagen $\alpha 3\alpha 4\alpha 5(\text{IV})$. Additionally, qRT-PCR showed that whereas the relative abundance of mRNAs encoding laminin $\alpha 1$, $\alpha 5$, $\beta 1$, $\beta 2$, and $\gamma 1$, and collagen $\alpha 1(\text{IV})$, $\alpha 2(\text{IV})$, and $\alpha 6(\text{IV})$ chains were markedly decreased in mature kidney, those encoding

the collagen $\alpha 3(\text{IV})$ and collagen $\alpha 4(\text{IV})$ chains were unexpectedly and significantly increased.

Immunofluorescence microscopy of developing kidney using isoform-specific antibodies has previously shown that laminin $\alpha 1$, $\beta 1$, and collagen $\alpha 1\alpha 2\alpha 1(\text{IV})$ are present in GBMs of the earliest glomeruli, and laminin $\alpha 5$, $\beta 2$, and collagen $\alpha 3\alpha 4\alpha 5(\text{IV})$ are in GBMs of mature glomeruli (Miner and Sanes 1994; Miner et al. 1997; Sorokin et al. 1997). However, our findings presented here represent the first report that we are aware of to simultaneously immunolocalize the different laminin and collagen IV isoforms in developing GBMs. Our results clearly demonstrate that the specific isoform switches for laminin and collagen IV occurred on different developmental timetables. Downregulation of laminin $\alpha 1$ and upregulation of laminin $\alpha 5$ deposition occurred early in glomerular development, whereas downregulation of collagen $\alpha 1\alpha 2\alpha 1(\text{IV})$ and upregulation of $\alpha 3\alpha 4\alpha 5(\text{IV})$ deposition occurred

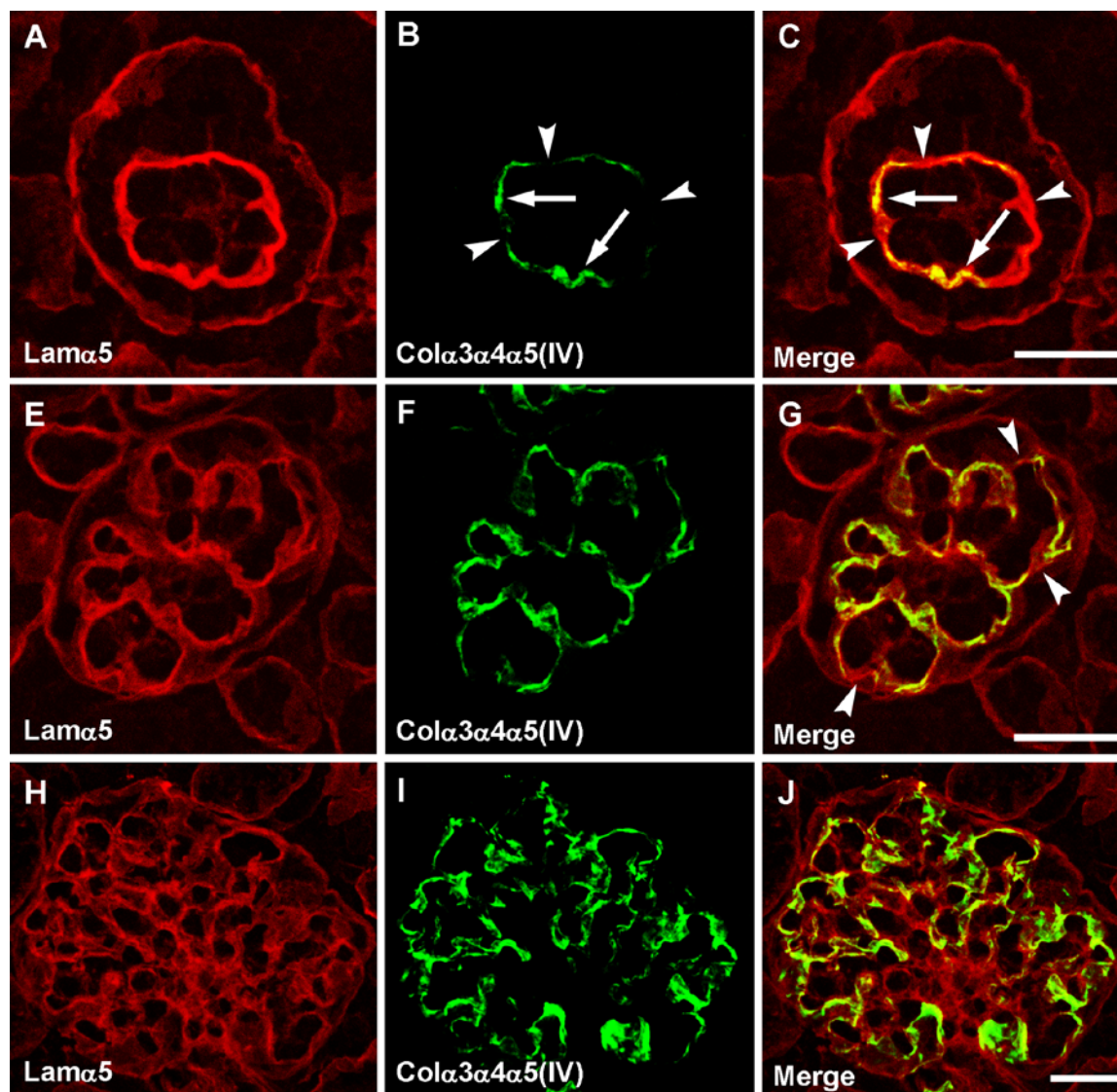


Figure 4. Laminin $\alpha 5$ is distributed in linear, continuous patterns in early and later stage capillary loop glomerular basement membranes (GBMs) (A–G), as well as throughout GBMs and mesangial matrices of maturing stage glomeruli (H–J). Collagen $\alpha 3\alpha 4\alpha 5(\text{IV})$ is first observed in early capillary loop GBMs in focal, discontinuous patterns (B–C, arrows) that are interrupted by GBM segments that are positive for laminin $\alpha 5$ (B–C, arrowheads). As more capillary loops are added to developing glomeruli, more collagen $\alpha 3\alpha 4\alpha 5(\text{IV})$ is deposited, but lengths of laminin $\alpha 5$ positive GBM lack collagen $\alpha 3\alpha 4\alpha 5(\text{IV})$ (G, arrowheads). GBMs of maturing stage glomeruli of newborn kidneys are still not fully labeled with anti-collagen $\alpha 3\alpha 4\alpha 5(\text{IV})$ (H–J). Bars = 20 μm .

later. Additionally, the patterns for laminin and collagen IV transitioning were strikingly different. Once the laminin $\alpha 1-\alpha 5$ switch occurred in early capillary loop stage glomeruli, all of the GBM assembled thereafter contained laminin $\alpha 5$ in linear patterns. In contrast, the deposition of collagen $\alpha 3\alpha 4\alpha 5(\text{IV})$ into GBMs of newborn kidney took place over a gradual period and in non-linear patterns, leaving segments of laminin $\alpha 5$ -positive GBM in maturing glomeruli that lacked collagen IV labeling entirely. In fully mature glomeruli of 8-week-old mice, however, all of the GBMs were immunolabeled with anti-collagen $\alpha 3\alpha 4\alpha 5(\text{IV})$ in linear, continuous patterns.

Previous work has shown that ultrastructurally normal basement membranes can form in Col4a1/2 knockout embryos, which survive until mid-gestation in the complete absence of collagen IV (Poschl et al. 2004). The authors of that study speculated that the presence of laminin and other basement membrane proteins in early embryos allows for blastocyst formation, implantation, and initial organogenic events. Beginning in mid-gestation, however, basement membranes in Col4a1/2-null embryos degrade, probably because they are inadequately stabilized due to the absence of a collagen $\alpha 1\alpha 2\alpha 1(\text{IV})$ network (Poschl et al. 2004). Similarly, in our results presented here, the laminin

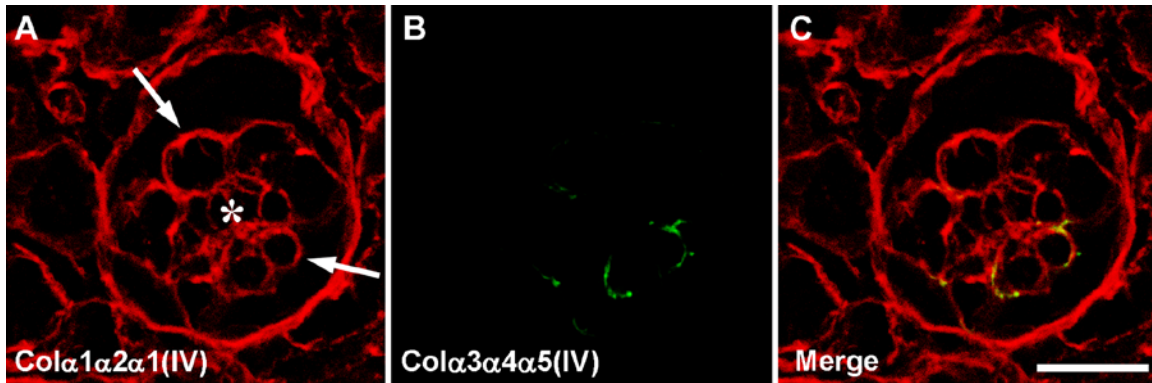


Figure 5. Localization of collagen $\alpha 1\alpha 2\alpha 1$ (IV) and $\alpha 3\alpha 4\alpha 5$ (IV) in a capillary loop stage glomerulus. Dually immunolabeled section shows collagen $\alpha 1\alpha 2\alpha 1$ (IV) in loop glomerular basement membranes (A, arrows) and developing mesangial matrix (*); collagen $\alpha 3\alpha 4\alpha 5$ (IV) is seen only in fragmentary, discontinuous patterns in a few loops (arrows, B, C). Bars = 20 μ m.

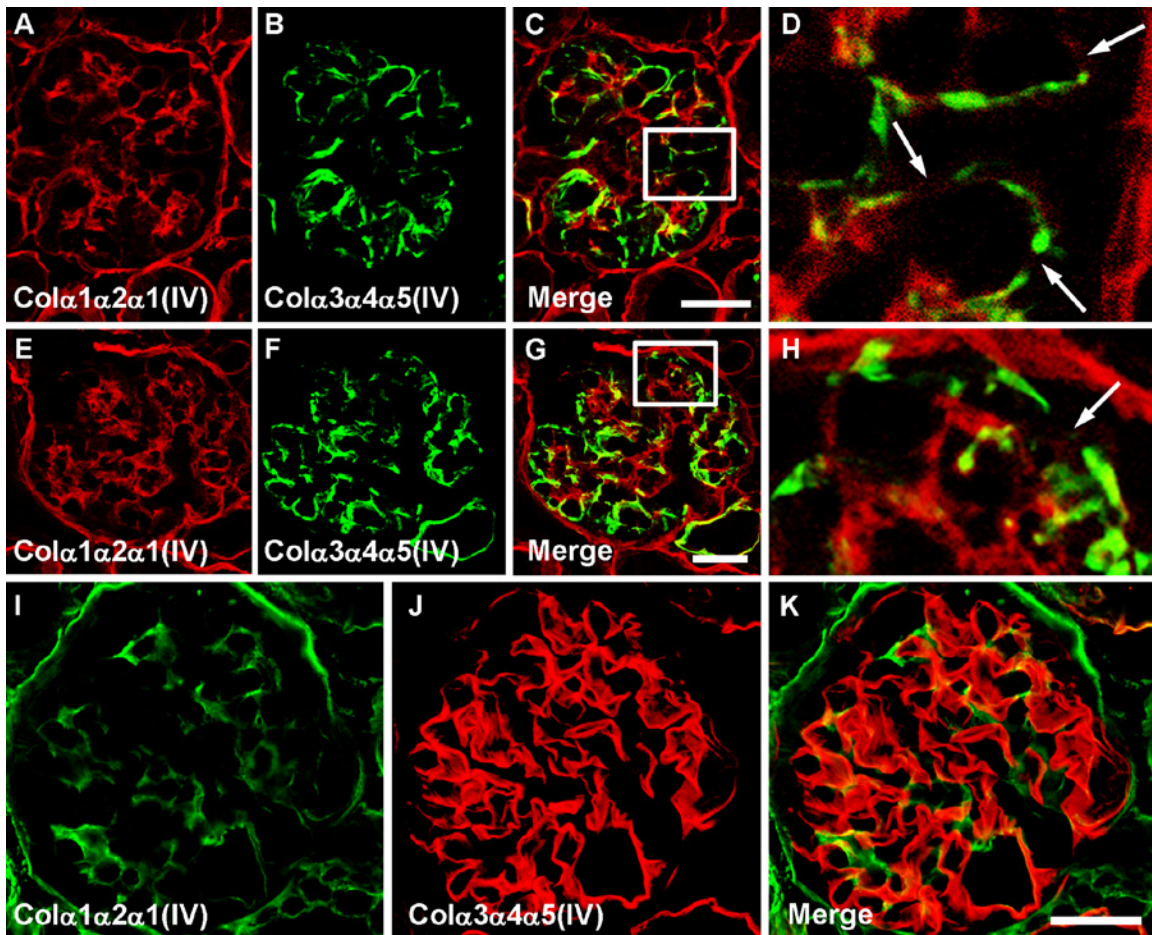


Figure 6. Localization of collagen $\alpha 1\alpha 2\alpha 1$ (IV) and $\alpha 3\alpha 4\alpha 5$ (IV) in maturing stage glomeruli of newborn (A–H) and 8-week-old mice (I–K). In maturing stage glomeruli of newborns, there is very little signal overlap in glomerular basement membranes (GBMs) or mesangial matrices for these two type IV collagen isoforms (C and G). Boxed areas in C and G are shown in D and H, respectively, where there are overt discontinuities or gaps in labeling for either isoform of type IV collagen in peripheral loop GBMs (arrows). In fully mature glomeruli of 8-week-old kidneys, anti-collagen $\alpha 1\alpha 2\alpha 1$ (IV) immunolabels only mesangial matrices, whereas anti-collagen $\alpha 3\alpha 4\alpha 5$ (IV) labels GBMs exclusively in a continuous, linear pattern. Unlike the case for laminin $\alpha 1$ and laminin $\alpha 5$, there is essentially no signal overlap for these different collagen IV networks in mesangial areas (compare with Figs. 2C and 2F). Bars = 20 μ m.

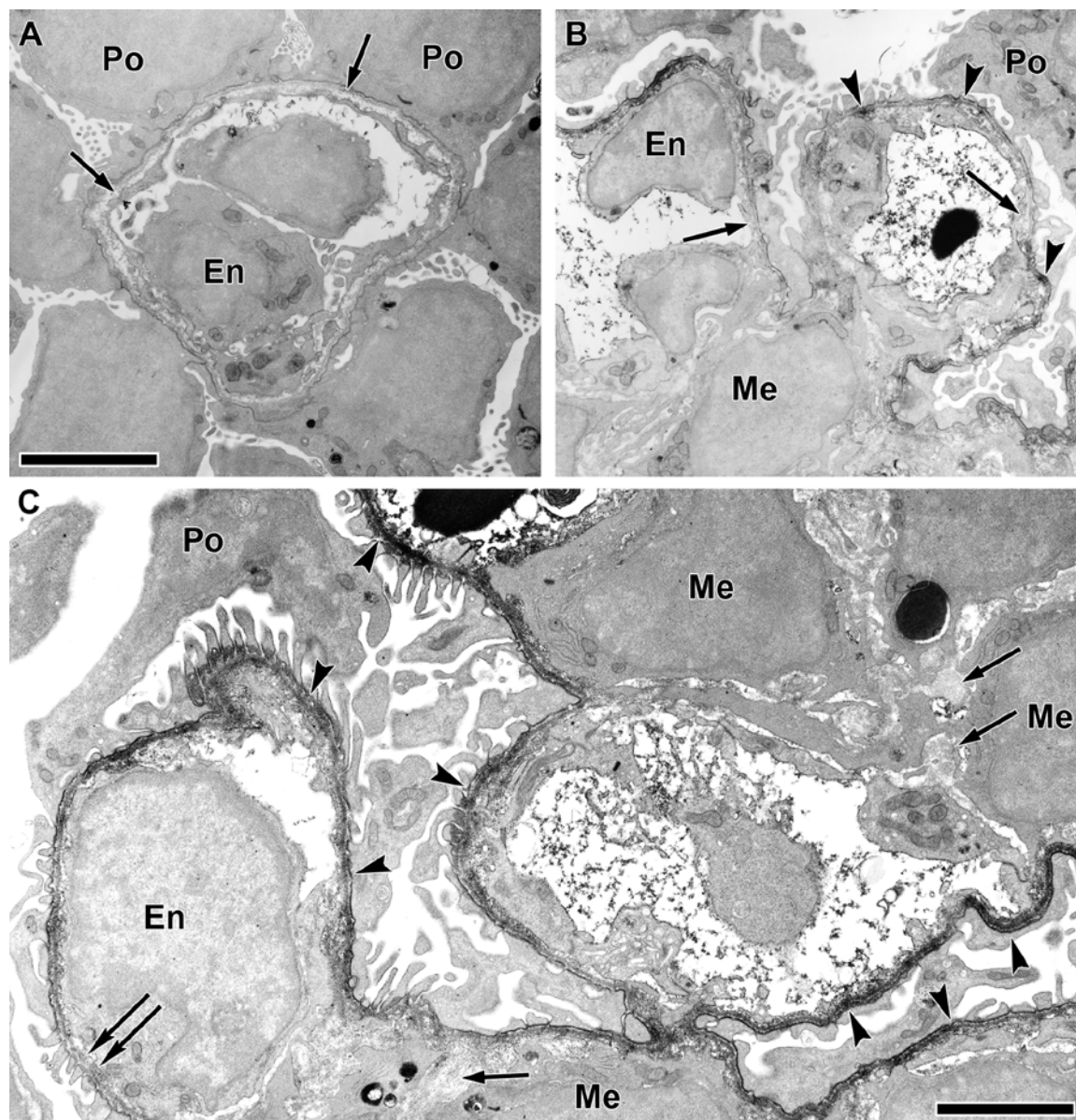


Figure 7. Immunoelectron microscopic localization of collagen $\alpha3\alpha4\alpha5(IV)$ in newborn mouse kidney. (A) Glomerular basement membranes (GBMs) of early capillary loop stage glomeruli are unlabeled (arrows). (B) In later stage capillary loop GBMs, discontinuous, uneven deposits of peroxidase reaction product (arrowheads) can be seen in GBMs that also contain unlabeled segments (arrows). (C) Maturing stage glomeruli contain GBMs that appear more uniformly labeled (arrowheads), although there are areas that remain spotty (double arrow). Note that reaction product is absent from mesangial matrices (arrows). En, endothelium; Po, podocyte; Me, mesangium. Bars A and B = 10 μm ; bar C = 3 μm .

$\alpha5$ -positive peripheral loop GBMs lacking collagen IV are presumably able to function adequately until they are later modified by the addition of collagen $\alpha3\alpha4\alpha5(IV)$. On the other hand, if collagen $\alpha3\alpha4\alpha5(IV)$ is never installed in the GBM, as is the case in Alport syndrome, the glomerulus eventually loses its barrier properties and the GBM disintegrates (Hudson et al. 2003).

We previously provided evidence that laminin $\alpha1$ and $\beta1$, and subsequently laminin $\alpha5$ and $\beta2$, are all synthesized

and secreted by both endothelial cells and podocytes in developing glomeruli (St. John and Abrahamson 2001). Additionally, we showed that when fetal kidneys from laminin $\alpha5$ knockout mice are grafted into kidney cortices of newborn wild-type hosts, host-derived endothelial cells migrate into grafts and establish hybrid glomeruli containing wild-type endothelial cells and Lama5-null podocytes (Abrahamson et al. 2007). Glomerular basement membranes within these hybrid glomeruli are abnormal, however, and

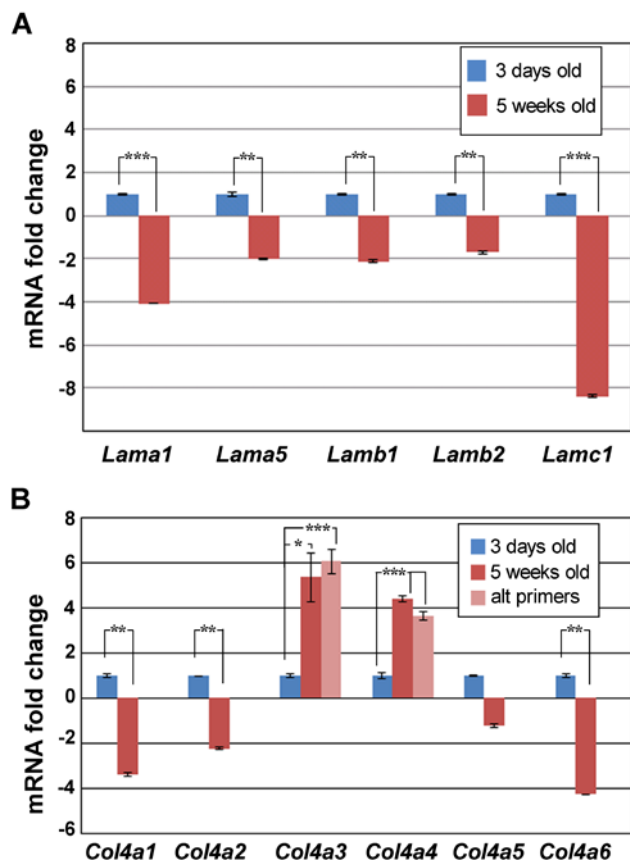


Figure 8. Histograms showing relative expression levels for mRNAs encoding laminin (A) and type IV collagen (B) chains in kidneys from 3-day-old (blue) and 5-week-old (red) mice. As seen in A, compared with newborns, all of the laminin chain mRNAs are significantly downregulated in mature mice. In contrast, mRNAs encoding the $\alpha 3$ and $\alpha 4$ chains of type IV collagen are significantly more abundant in mature kidneys, whereas those encoding collagen $\alpha 1$ (IV), $\alpha 2$ (IV), and $\alpha 6$ (IV) chains are downregulated (B). * $p < 0.05$, ** $p < 0.005$, and *** $p < 0.0005$. Light red bars = alternate (alt) primers for COL4A3 and COL4A4 (Table 2), confirming increase for these mRNAs at 5 weeks of age.

contain laminin $\alpha 5$ only on the inner surfaces facing the wild-type endothelium and retain laminin $\alpha 1$ on their outer surfaces beneath the laminin $\alpha 5$ mutant podocytes. At the ultrastructural level, these hybrid GBMs are poorly condensed and the podocytes fail to form foot processes (Abrahamson et al. 2007). At the time, we speculated that the laminin $\alpha 1$ – $\alpha 5$ switch was important for inducing podocyte differentiation and foot process formation (Abrahamson et al. 2007). Because glomerular collagen $\alpha 3\alpha 4\alpha 5$ (IV) is synthesized only by podocytes (Abrahamson et al. 2009), perhaps the laminin $\alpha 1$ – $\alpha 5$ switch occurs first to induce podocytes to differentiate further, which then activates the collagen $\alpha 1\alpha 2\alpha 1$ (IV)– $\alpha 3\alpha 4\alpha 5$ (IV) transition. If true, this would help explain the temporal delay in collagen $\alpha 3\alpha 4\alpha 5$ (IV) deposition. What is not at all clear, however, is

how the collagen $\alpha 3\alpha 4\alpha 5$ (IV) network is integrated into the laminin network to constitute the mature GBM, and much more work needs to be carried out at the cellular and biochemical levels in order to understand this process fully.

We emphasize that the comparative expression differences that we observed for laminins and type IV collagen between 3-day-old and 5-week-old whole kidney mRNAs may not accurately reflect changes occurring only in glomeruli, which probably represent less than 5% of the total kidney tissue mass. Although we now routinely isolate glomeruli from mice as young as 18 days old using the magnetic bead perfusion technique (Takemoto et al. 2002), we have not successfully applied this approach to enrich for glomeruli from newborn mice, which is why we used whole kidney RNA samples for the comparative expression experiments described here. Nevertheless, the significant reductions in mRNAs encoding the laminins, and COL4A1 and COL4A2, were not surprising, as glomeruli and tubules in 5-week-old mouse kidneys have reached their fully mature dimensions, and GBM and TBM basement membrane assembly should be complete. Moreover, basement membranes in mature kidneys are also highly stable structures, and metabolic labeling studies show that rat GBM collagen turnover has a half-life estimated to be greater than 100 days (Price and Spiro 1977), which would largely obviate the need for laminin and collagen IV gene transcription. On the other hand, that Col4a3 and Col4a4 mRNAs were significantly upregulated in 5-week-old kidneys compared with 3-day-old kidneys was an unexpected finding that we verified using an independent set of qPCR primers. The COL4A3 and COL4A4 genes are located on mouse chromosome 1 and are organized in a head-to-head conformation (Sado et al. 1998; Lu et al. 1999). The tandem expression of both genes was therefore likely due to their sharing a common promoter, although the exact regulatory mechanisms for any of the collagen IV genes, as well as those for the laminins, are extremely poorly understood.

In summary, we have described the developmental timing for the GBM laminin and collagen IV isoform substitutions, and these processes are temporally and spatially distinct. Taking all of the results together, we conclude that the biosynthesis of laminin and collagen IV is probably regulated by very different molecular genetic controls. Similarly, the installation of the various laminin and collagen IV protein isoforms into the GBM and their removal are most likely also mediated by different mechanisms. Nevertheless, these processes surely must be coordinated to ensure that the glomerular filtration barrier is assembled properly. What we need to learn next are how the various laminin and collagen IV genes are sequentially silenced and activated and how the early protein isoforms are replaced in maturing GBM. This information will be important for understanding and potentially treating fibrotic diseases such

as glomerulosclerosis, where there is overproduction and accumulation of basement membrane proteins.

Acknowledgments

We thank Drs. Dorin-Bogdan Borza and Jeffrey H. Miner for their gifts of anti-collagen $\alpha3\alpha4\alpha5(IV)$ and anti-laminin $\alpha5$ antibodies, respectively.

Declaration of Conflicting Interests

The author(s) declared no potential conflicts of interest with respect to the research, authorship, and/or publication of this article.

Funding

The author(s) disclosed receipt of the following financial support for the research, authorship, and/or publication of this article: National Institutes of Health grants P20GM104936, S10RR027564, and P01DK065123. The Electron Microscope Research Laboratory and the Confocal Imaging Facility at the University of Kansas Medical Center are funded, in part, by grant P20GM104936 from the National Institutes of Health (NIH). The JEOL JEM-1400 transmission electron microscope used in this study was purchased with funds from NIH grant S10RR027564. This research was supported by NIH grant P01DK065123.

References

- Abrahamson DR. 2012. Role of the podocyte (and glomerular endothelium) in building the GBM. *Semin Nephrol.* 32:342–349.
- Abrahamson DR, Hudson BG, Stroganova L, Borza DB, St.John PL. 2009. Cellular origins of type IV collagen networks in developing glomeruli. *J Am Soc Nephrol.* 20:1471–1479.
- Abrahamson DR, Irwin MH, St.John PL, Perry EW, Accavitti MA, Heck LW, Couchman JR. 1989. Selective immunoreactivities of kidney basement membranes to monoclonal antibodies against laminin: localization of the end of the long arm and the short arms to discrete microdomains. *J Cell Biol.* 109:3477–3491.
- Abrahamson DR, St.John PL. 1992. Loss of laminin epitopes during glomerular basement membrane assembly in developing mouse kidneys. *J Histochem Cytochem.* 40:1943–1953.
- Abrahamson DR, St.John PL, Isom K, Robert B, Miner JH. 2007. Partial rescue of glomerular laminin $\alpha5$ mutations by wild-type endothelia produce hybrid glomeruli. *J Am Soc Nephrol.* 18:2285–2293.
- Cosgrove D, Meehan DT, Grunkemeyer JA, Kornak JM, Sayers R, Hunter WJ, Samuelson GC. 1996. Collagen COL4A3 knockout: a mouse model for autosomal Alport syndrome. *Genes Dev.* 10:2981–2992.
- Gubler MC. 2008. Inherited diseases of the glomerular basement membrane. *Nature Clin Prac Nephrol.* 4:24–37.
- Haroldsson B, Nystrom J, Deen WM. 2008. Properties of the glomerular barrier and mechanisms of proteinuria. *Physiol Rev.* 88:451–487.
- Heidet L, Borza DB, Jouin M, Sich M, Mattei MG, Sado Y, Hudson BG, Hastie N, Antignac C, Gubler MC. 2003. A human-mouse chimera of the $\alpha3\alpha4\alpha5(IV)$ collagen promoter rescues the renal phenotype in *Col4a3^{-/-}* Alport mice. *Am J Pathol.* 165:1633–1644.
- Hudson BG, Tryggvason K, Sundarmoorthy M, Neilson EG. 2003. Alport syndrome, Goodpasture syndrome, and type IV collagen. *N Engl J Med.* 348:2453–2456.
- Karnovsky MJ. 1965. A formaldehyde-glutaraldehyde fixative of high osmolarity for use in electron microscopy. *J Cell Biol.* 27:137a.
- Livak KJ, Schmittgen TD. 2001. Analysis of relative gene expression data using real-time quantitative PCR and the 2(-Delta Delta C (T)) method. *Methods.* 25:402–408.
- Lu W, Phillips CL, Killen PD, Hlaing T, Harrison WR, Elder FF, Miner JH, Overbeek PA, Meisler MH. 1999. Insertional mutation of the collagen genes *Col4a3* and *Col4a4* in a mouse model of Alport syndrome. *Genomics.* 61:113–124.
- Miner JH. 1998. Developmental biology of glomerular basement membrane components. *Curr Opin Nephrol Hypertens.* 7:13–19.
- Miner JH. 2011. Organogenesis of the kidney glomerulus. Focus on the glomerular basement membrane. *Organogenesis.* 7:75–82.
- Miner JH. 2012. The glomerular basement membrane. *Exp Cell Res.* 318:973–978.
- Miner JH, Cunningham J, Sanes JR. 1998. Roles for laminin in embryogenesis: exencephaly, syndactyly, and placentopathy in mice lacking the $\alpha5$ chain. *J Cell Biol.* 143:1713–1723.
- Miner JH, Li C. 2000. Defective glomerulogenesis in the absence of laminin α demonstrates a developmental role for the glomerular basement membrane. *Dev Biol.* 217:278–298.
- Miner JH, Patton BL, Lentz SI, Gilbert DJ, Snider WD, Jenkins NA, Copeland NG, Sanes JR. 1997. The laminin alpha chains: expression, developmental transition, and chromosomal locations of 1-5, identification of heterotrimeric laminins 8-11, and cloning of a novel 3 isoform. *J Cell Biol.* 137:685–781.
- Miner JH, Sanes JR. 1994. Collagen IV alpha 3, alpha 4, and alpha 5 chains in rodent basal laminae: sequence, distribution, association with laminins, and developmental switches. *J Cell Biol.* 127:879–891.
- Miner JH, Sanes JR. 1996. Molecular and functional defects in kidneys of mice lacking collagen alpha3(IV): implications for Alport syndrome. *J Cell Biol.* 135:1403–1413.
- Nakane PK, Kawaoi A. 1974. Peroxidase-labeled antibody. A new method of conjugation. *J Histochem Cytochem.* 22:1084–1091.
- Noakes PG, Miner JH, Gautam M, Cunningham JM, Sanes JR, Merlie JP. 1995. The renal glomerulus of mice lacking the s-laminin/laminin $\beta2$: nephrosis despite compensation by laminin $\beta1$. *Nat Genet.* 10:400–406.
- Poschl E, Schlotzer-Schrehardt U, Brachvogel B, Saito K, Ninomiya Y, Mayer U. 2004. Collagen IV is essential for basement membrane stability but dispensable for initiation of its assembly during early development. *Development.* 131:1619–1628.
- Price RG, Spiro RG. 1977. Studies on the metabolism of the renal glomerular basement membrane. *J Biol Chem.* 252:8597–8602.

- Sado Y, Kagawa M, Naito I, Ueki Y, Seki T, Momota R, Oohashi T, Ninomiya Y. 1998. Organization and expression of basement membrane collagen IV genes and their roles in human disorders. *J Biochem.* 123:767–776.
- Sorokin LM, Pausch F, Durbeej M, Ekblom P. 1997. Differential expression of five laminin α (1-5) chains in developing and adult mouse kidney. *Develop Dyn.* 210:446–462.
- St.John PL, Abrahamson DR. 2001. Glomerular endothelial cells and podocytes jointly synthesize laminin-1 and -11 chains. *Kidney Int.* 60:1037–1046.
- Takemoto M, Asker N, Gerhardt H, Lundvist A, Johansson BR, Saito Y, Betsholtz C. 2002. A new method for large scale isolation of kidney glomeruli from mice. *Am J Pathol.* 161: 799–805.
- Zenker M, Tralau T, Lennert T, Pitz S, Mark K, Madlon H, Dötsch J, Reis A, Müntefering H, Neumann LM. 2004. Congenital nephrosis, mesangial sclerosis, and distinct eye abnormalities with microcoria: an autosomal recessive syndrome. *Am J Med Genet A.* 130: 138–145.