

# Purification of Calmodulin from *Chlamydomonas*: Calmodulin Occurs in Cell Bodies and Flagella

STEPHEN E. GITELMAN and GEORGE B. WITMAN

Department of Biology, Princeton University, Princeton, New Jersey 08544

**ABSTRACT** Calmodulin has been purified from cell bodies of the green alga *Chlamydomonas* by  $\text{Ca}^{++}$ -dependent affinity chromatography on fluphenazine-Sepharose 4B. Calmodulin from this primitive organism closely resembles that from bovine brain in a number of properties, including (a) binding to fluphenazine in a  $\text{Ca}^{++}$ -dependent, reversible manner, (b) functioning as a heat-stable,  $\text{Ca}^{++}$ -dependent activator of cyclic nucleotide phosphodiesterase, and (c) electrophoretic mobility in SDS-polyacrylamide gels in both the presence and absence of  $\text{Ca}^{++}$ , which causes a shift in the relative mobility of calmodulin. Calmodulin has also been identified by the criteria of phosphodiesterase activation and electrophoretic mobility in both the detergent soluble "membrane plus matrix" and the axoneme fractions of *Chlamydomonas* flagella. Calmodulin is not associated with the partially purified 12S or 18S dynein ATPases of *Chlamydomonas*. The presence of calmodulin in the flagellum suggests that it is involved in one or more of the  $\text{Ca}^{++}$ -dependent activities of this organelle.

Calmodulin, or  $\text{Ca}^{++}$ -dependent regulator (CDR), is a small, heat-stable,  $\text{Ca}^{++}$ -binding protein, which modulates a large number of  $\text{Ca}^{++}$ -dependent events in eukaryotes (see references 13 and 46 for reviews). Calmodulin is an activator of several enzymes, including  $\text{Ca}^{++}$ -dependent cyclic nucleotide phosphodiesterase (12),  $\text{Ca}^{++}$ -activated adenylate cyclase (7), NAD kinase (2), myosin light-chain kinase (14, 47), and the  $\text{Ca}^{++}$ -stimulated ATPase of the erythrocyte plasma membrane (20, 27). In addition, calmodulin has been reported to be involved in the control of  $\text{Ca}^{++}$ -dependent microtubule assembly-disassembly (32), and has been localized in the spindle apparatus (1, 44), in microfilament bundles (16), and in microvillae (23).

Calcium ions are required for a number of processes which involve cilia and flagella. For example, in the green alga *Chlamydomonas*,  $\text{Ca}^{++}$  has a role in phototaxis (37), in the control of flagellar waveform (3, 24, 35), in the maintenance of flagellar length (29, 34), and in flagellar surface motility—the movement of particles associated with the flagellar membrane (4). In other organisms,  $\text{Ca}^{++}$  has a role in avoidance reactions (17), in chemotaxis (6), and in ciliary arrest (40) and flagellar quiescence (19). Recently, the presence of calmodulin has been reported in the cilia and axonemes of the ciliates *Tetrahymena* (26) and *Paramecium* (31). Calmodulin may, therefore, be involved in one or more of the  $\text{Ca}^{++}$ -dependent processes associated with cilia and flagella.

As a first step toward investigating the possible involvement of calmodulin in these processes, we have isolated a calmodu-

linlike protein from *Chlamydomonas* and determined its distribution in various flagellar fractions. The protein appears to be a true calmodulin on the basis of several biological and biochemical properties. It occurs in the cell body, in the detergent-soluble membrane plus matrix fraction of the flagellum, and in the flagellar axoneme.

## MATERIALS AND METHODS

### Isolation of Cell and Flagellar Fractions

*Chlamydomonas reinhardtii* (strain 1132D) was grown in synchronous cultures of up to 96 liters, and the cells harvested, washed, and deflagellated by the dibucaine procedure, all as previously described (45). Subsequent operations were carried out at 4°C unless stated otherwise. The cell bodies were separated from the detached flagella by centrifugation at 1,700 g (IEC 253 head, 2,600 rpm) for 5 min. The pellet of cell bodies was used as the starting material for purification of calmodulin (see below). The supernate, containing the flagella, was collected, underlayered with a cushion of 25% sucrose in 10 mM HEPES, 5 mM  $\text{MgSO}_4$ , and 1 mM DTT at pH 7.5, and recentrifuged for 10 min at 2,750 g (IEC 253 head, 3,300 rpm) to remove any remaining cell bodies. The cell-free supernate from this centrifugation was then spun at 31,000 g (Sorval SS-34 rotor, DuPont Instruments-Sorvall, DuPont Co., Newton, Conn., 16,000 rpm) for 20 min to pellet the flagella. For electrophoretic studies, the flagella were demembranated by resuspension in ice-cold 1% Nonidet P-40 (2 ml/ml packed cells) in HMDEK (30 mM HEPES, pH 7.5 at 23°C; 5 mM  $\text{MgSO}_4$ ; 1 mM DTT; 0.5 mM  $\text{Na}_2\text{EDTA}$ ; 25 mM KCl). After 10–20 min at room temperature, the suspension was recentrifuged as above; the resulting supernate, containing solubilized components of the flagellar membrane and matrix, and the pellet, containing demembranated axonemes, were prepared for SDS-gel electrophoresis. For studies on phosphodiesterase activation, the flagella were demembranated by treatment with 0.04% Nonidet in HMDEK and the suspension centrifuged as above. The

supernate was used for the membrane and matrix fraction: the axonemes were washed twice by resuspension in 1% Nonidet in HMDEK and once by resuspension in HMDEK before final resuspension in HMDEK. In some experiments, EGTA was substituted for EDTA in all solutions.

12S and 18S dynein ATPases were partially purified as described by Fay and Witman (18 and footnote 1). The dyneins were extracted from isolated *Chlamydomonas* axonemes by treatment with a solution containing 0.5 M KCl, 30 mM Tris (pH 7.5), 5 mM MgSO<sub>4</sub>, 1 mM DTT, 0.5 mM Na<sub>2</sub>EDTA, and 0.1 mM ATP. The resulting extract was dialyzed overnight against 30 mM Tris (pH 7.5), 0.5 mM Na<sub>2</sub>EDTA, 1 mM DTT, and 25 mM KCl (TEDK), and the dyneins then separated by zone sedimentation in 5–20% linear sucrose density gradients in TEDK.

### Preparation of Fluphenazine-Sepharose for Affinity Chromatography

Fluphenazine was coupled to Sepharose 4B by the bisoxirane method of Sundberg and Porath (38) as described by Charbonneau and Cormier (11). Fluphenazine · 2 HCl was the kind gift of Mr. S. J. Lucania of the Squibb Institute (Princeton, N.J.).

### Purification of Calmodulin

*Chlamydomonas* calmodulin was purified by a modification of the method of Charbonneau and Cormier for purification of peanut calmodulin (11). All operations were carried out at 4°C. Packed *Chlamydomonas* cell bodies were resuspended in 2 vol of a solution containing 50 mM Tris (pH 8.0 at 23°C), 1 mM β-mercaptoethanol, and 1 mM Na<sub>2</sub>EDTA. The cells were broken open by sonication with a Branson model S75 Sonifier (Branson Sonic Power Co., Danbury, Conn.), and the suspension then centrifuged for 30 min at 8,700 g (Sorvall SS-34 rotor [DuPont Instruments-Sorvall, DuPont Co.] 8,500 rpm). The supernate was collected, mixed with 1.1 vol of absolute ethanol, and stirred for 10 min. The suspension was then recentrifuged as above, the supernate collected, mixed with three times the initial supernatant volume of absolute ethanol, and stirred for 10 min. The mixture was recentrifuged as above, and the resulting pellet resuspended in column wash buffer (10 mM HEPES, 1 mM CaCl<sub>2</sub>, 0.5 M NaCl, pH 7.0 at 23°C).

Samples in column wash buffer were applied to a 3.75 ml (0.5 cm i.d. x 12 cm) column of fluphenazine-Sepharose equilibrated with the same buffer. The column was then washed with this buffer until the A<sub>280</sub> of the eluant dropped to base line level. Bound calmodulin was then eluted by application of a buffer containing 10 mM Tris (pH 8.0 at 23°C) and 10 mM EGTA. 1-ml fractions were collected at a rate of 30 ml/h; fractions showing absorbance after application of the EGTA-containing buffer were pooled, dialyzed in benzoylated dialysis tubing against 1 mM β-mercaptoethanol, and stored frozen at –80°C. For electrophoretic analysis of individual column fractions, small portions were removed from some fractions before the peak fractions were pooled.

### Phosphodiesterase Assay for Calmodulin

The ability of *Chlamydomonas* calmodulin to activate calmodulin-dependent cyclic nucleotide phosphodiesterase was determined by the method of Wolff et al.<sup>2</sup> This assay measures the conversion of G-<sup>3</sup>H-cGMP to [<sup>3</sup>H]guanosine by the coupled activities of bovine brain phosphodiesterase and calf intestinal alkaline phosphatase. Before the assay, samples of *Chlamydomonas* protein were heated for 2 min at 100°C.

The bovine brain calmodulin used in these studies was very generously provided by Dr. Donald Wolff of the College of Medicine and Dentistry of New Jersey-Rutgers Medical School. Calmodulin-depleted cyclic nucleotide phosphodiesterase was prepared from fresh calf brains as described by Watterson et al. (41). Alkaline phosphatase (Sigma P-4502) and cGMP (Sigma G-6129) were obtained from the Sigma Chemical Co. (St. Louis, Mo.); [8-<sup>3</sup>H]-cGMP was obtained from the Amersham Corp. (Arlington Heights, Ill.). The assays shown in Fig. 1 were carried out in the laboratory of Dr. Wolff, using materials kindly supplied by him.

<sup>1</sup> Fay, R. B., and G. B. Witman. Isolation and polypeptide composition of three dynein ATPases from *Chlamydomonas* flagella. Manuscript in preparation.

<sup>2</sup> Wolff, D. J., J. M. Ross, P. N. Thompson, M. A. Brostrom, and C. O. Brostrom. 1980. Histone phosphatase activity modulated by the Ca<sup>++</sup>-dependent regulator protein. I. Partial purification from brain and kinetic properties in dephosphorylation of mixed histones. Manuscript submitted for publication.

### Acrylamide Gel Electrophoresis

SDS-polyacrylamide gel electrophoresis was performed in 12.5% acrylamide slab gels according to the method of Laemmli and Favre (28), except that the running buffer contained 3 g Tris, 14.4 g glycine, and 1 g SDS per liter, and the sample buffer contained, in addition to the usual components, either 1 mM CaCl<sub>2</sub> or 1 mM EGTA. Electrophoresis was carried out for 4 h at a constant power of 2 W/gel. Gels were stained in 0.25% Coomassie Blue in methanol:glacial acetic acid:water (5:1:5), and destained in 20% methanol, 7.5% acetic acid.

The purified bovine brain calmodulin used in our electrophoretic analyses was kindly provided by Dr. Thomas Vanaman of the Duke University Medical Center.

### Protein Determination

Protein in crude fractions was determined by the method of Bradford (5) using Bio-Rad Protein Assay Dye Reagent (Bio-Rad Laboratories, Richmond, Calif.) and bovine gamma globulin as a standard.

Amounts of purified *Chlamydomonas* calmodulin were determined by quantitative densitometry of Coomassie Blue-stained acrylamide gels using purified bovine brain calmodulin as a standard (41). Gels were scanned directly with a Joyce-Loebl microdensitometer (Joyce, Loebl and Co., Ltd., Gateshead-on-Tyne, England) and peak areas of the tracings measured with a planimeter.

## RESULTS

### Purification of Calmodulin from *Chlamydomonas*

A number of antipsychotic drugs bind to calmodulin with high affinity (see reference 43 for review); this binding, which is highly selective, dependent upon Ca<sup>++</sup> at neutral pH, and readily reversible by addition of EGTA, has been used as the basis for purification of calmodulin from a number of sources by affinity chromatography (11, 25). To determine if calmodulin could be purified from *Chlamydomonas* by affinity chromatography, an extract prepared from *Chlamydomonas* cell bodies was applied to a fluphenazine-Sepharose 4B column in the presence of 1 mM CaCl<sub>2</sub>. With continued washing of the column, most of the applied protein was eluted, and the absorbance of the eluant dropped to zero (Fig. 1). When buffer containing EGTA was then applied to the column, a small peak of protein was eluted. Fractions from this peak contained a single low molecular weight polypeptide that closely resembled bovine brain calmodulin in its electrophoretic mobility (Fig. 1, inset). This protein was not detected in the main (nonbound) protein peak or in fractions between the two peaks.

Based on quantitative densitometry of SDS-acrylamide gels, approximately 0.55 mg of calmodulin was obtained from ~80-ml packed cells.

### Heat Stability and Phosphodiesterase Activation

Two distinguishing features of calmodulin are heat stability and the ability to activate cyclic nucleotide phosphodiesterase in a Ca<sup>++</sup>-dependent manner (12). To determine if these were also properties of *Chlamydomonas* calmodulin, the activity of calmodulin-depleted bovine brain phosphodiesterase was assayed in the presence of various amounts of the *Chlamydomonas* protein, which had been incubated for 2 min at 100°C. Fig. 2 shows the activation curve for the heat-treated *Chlamydomonas* calmodulin; this curve was very similar to that obtained for bovine brain calmodulin. Both *Chlamydomonas* calmodulin and bovine brain calmodulin increased the activity of the phosphodiesterase 10- to 11-fold. No stimulation occurred in the absence of Ca<sup>++</sup>.

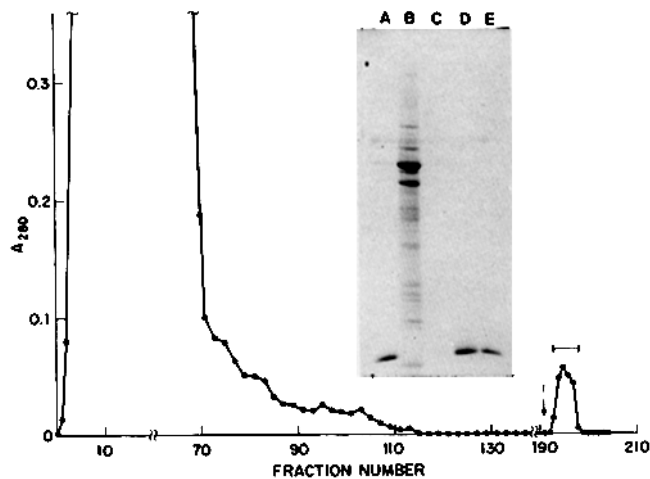


FIGURE 1 Chromatography of a *Chlamydomonas* extract on a flu-phenazine-Sepharose column. 25 ml of extract containing 212 mg protein (obtained from ~50 ml packed cells) was applied to the column commencing with fraction 1. The column was then washed with 10 mM HEPES, 1 mM  $\text{CaCl}_2$ , 0.5 M NaCl, pH 7.0. Beginning with fraction 191 (arrow), the column was washed with 10 mM Tris, 10 mM EGTA, pH 8.0. 1-ml fractions were collected. Fractions 193–198 (bar) were pooled for further analysis. Inset: SDS-polyacrylamide gel of bovine brain calmodulin (A), and column fractions 50 (B), 180 (C), 194 (D), and 196 (E). 1 mM EGTA was added to each sample. Fractions 194 and 196 contained a single polypeptide, which resembled bovine brain calmodulin in its electrophoretic mobility. The faint bands in the top half of the gel are artifactual.

The specific activity of the purified *Chlamydomonas* calmodulin was ~33,000 U/mg.<sup>3</sup>

### Effect of $\text{Ca}^{++}$ on Electrophoretic Mobility

Recently, Burgess et al. (9) reported that the electrophoretic mobility of bovine brain calmodulin in SDS-polyacrylamide gels varied depending on whether electrophoresis was carried out in the presence or absence of  $\text{Ca}^{++}$ ; this behavior apparently reflected the ability of calmodulin to bind  $\text{Ca}^{++}$  in the presence of SDS. To determine if  $\text{Ca}^{++}$  would also induce a change in the mobility of *Chlamydomonas* calmodulin in SDS-polyacrylamide gels, the protein was electrophoresed after addition of either 1 mM  $\text{Ca}^{++}$  or 1 mM EGTA to the sample buffer. As can be seen in Fig. 3, both bovine brain calmodulin and *Chlamydomonas* calmodulin migrated faster in the presence of  $\text{Ca}^{++}$  than in its absence. In the presence of 1 mM  $\text{Ca}^{++}$ , brain and *Chlamydomonas* calmodulins had apparent molecular weights of 18,000 and 17,500, respectively; in the absence of  $\text{Ca}^{++}$ , their respective apparent molecular weights were 19,400 and 19,600.

### Presence of Calmodulin in Flagella

The fact that  $\text{Ca}^{++}$  changes the mobility of *Chlamydomonas* calmodulin in SDS-polyacrylamide gels can be used to identify tentatively this protein in crude preparations and cell fractions. Fig. 4 shows the results obtained when the axoneme and membrane plus matrix fractions of *Chlamydomonas* flagella were electrophoresed in the presence and absence of  $\text{Ca}^{++}$ . In

the presence of  $\text{Ca}^{++}$ , a protein in the membrane plus matrix fraction very clearly comigrated with purified *Chlamydomonas* calmodulin at about 17,500 daltons; in the absence of  $\text{Ca}^{++}$ , this band completely disappeared and a new band appeared which coelectrophoresed with purified calmodulin at 19,600 daltons. Similarly, the flagellar axoneme contained a protein which comigrated with *Chlamydomonas* calmodulin under both conditions; however, calmodulin in this fraction was less obvious because of the presence of other proteins migrating in the same areas. A  $\text{Ca}^{++}$ -induced shift in mobility was not observed in any of the other proteins resolved in these fractions.

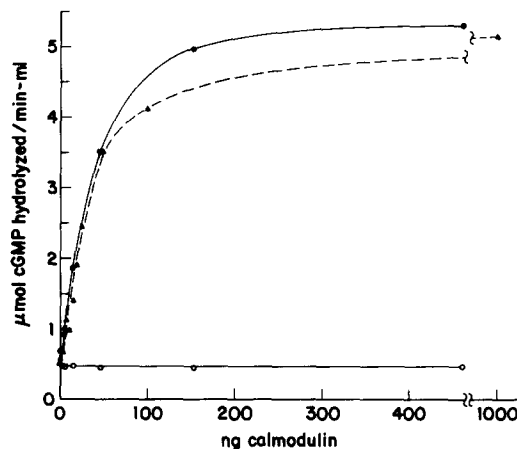


FIGURE 2 Activity of bovine brain cyclic nucleotide phosphodiesterase in the presence of various amounts of *Chlamydomonas* (●) or bovine brain (▲) calmodulin. All assays contained 0.042 mM  $\text{Ca}^{++}$ . Assays were also carried out with *Chlamydomonas* calmodulin in the presence of 0.042 mM  $\text{Ca}^{++}$  plus 1.6 mM EGTA (○). Phosphodiesterase activity is expressed as micromoles cGMP hydrolyzed per minute-milliliter of phosphodiesterase (12.5 mg protein).

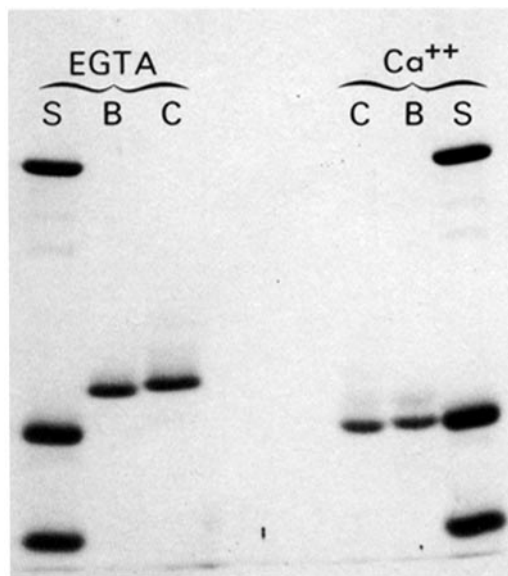


FIGURE 3 SDS-polyacrylamide gel electrophoresis of *Chlamydomonas* calmodulin (C), bovine brain calmodulin (B), and protein standards (S) after addition of 1 mM  $\text{Ca}^{++}$  or 1 mM EGTA to samples. Standards were cytochrome c (11,700),  $\beta$ -lactoglobulin (18,400), and carbonic anhydrase (29,000). The faint bands that migrated slightly behind both *Chlamydomonas* and bovine brain calmodulin appeared upon storage of the samples.

<sup>3</sup> One unit of calmodulin was defined as that amount which resulted in 50% maximum activation of a standard preparation of calmodulin-depleted phosphodiesterase.

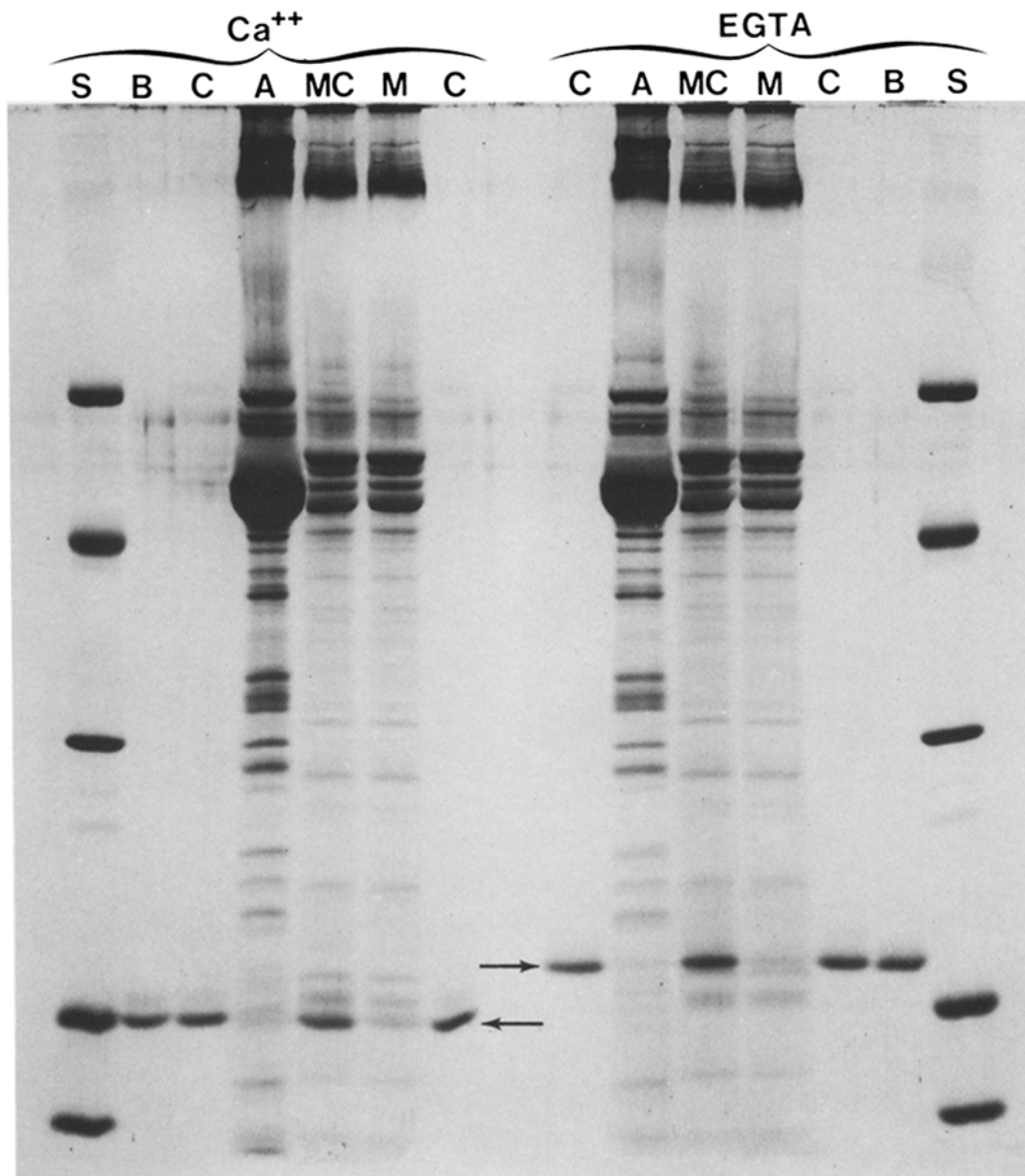


FIGURE 4 SDS-polyacrylamide gel electrophoresis of purified calmodulin and flagellar fractions in the presence and absence of  $\text{Ca}^{++}$ . B, 2  $\mu\text{g}$  bovine brain calmodulin; C, 1.8  $\mu\text{g}$  purified *Chlamydomonas* calmodulin; A, 40  $\mu\text{g}$  isolated axonemes; M, 37  $\mu\text{g}$  membrane plus matrix fraction; MC, 37  $\mu\text{g}$  membrane plus matrix fraction and 1.4  $\mu\text{g}$  of *Chlamydomonas* calmodulin; S, protein standards. Samples contained 1 mM  $\text{Ca}^{++}$  or 1 mM EGTA, as indicated. Arrows indicate positions of calmodulin under the two conditions. Protein standards were cytochrome c (11,700),  $\beta$ -lactoglobulin (18,400), carbonic anhydrase (29,000), ovalbumin (43,000), and bovine serum albumin (68,000).

#### Activation of Phosphodiesterase by Flagellar Fractions

To confirm that the flagellar fractions contained calmodulin, the isolated axoneme and membrane plus matrix fractions were heated at  $100^\circ\text{C}$  for 2 min and then tested for their ability to activate calmodulin-depleted phosphodiesterase. As shown in Fig. 5, the heat-treated axoneme fraction stimulated the phosphodiesterase activity to the same extent as bovine brain calmodulin; this activation was dependent upon  $\text{Ca}^{++}$  and inhibited by 60  $\mu\text{M}$  fluphenazine. Assuming that the calmodulin in the axonemes activated phosphodiesterase with the same efficiency as purified brain calmodulin or *Chlamydomonas* cell body calmodulin, then the isolated axonemes contained  $\sim 3 \mu\text{g}$  of calmodulin/mg protein. Likewise, the membrane plus matrix

fraction activated phosphodiesterase to the same extent as brain calmodulin, and this activation was also inhibited by EGTA or 60  $\mu\text{M}$  fluphenazine (results not shown). The membrane plus matrix fraction contained  $\sim 6 \mu\text{g}$  calmodulin/mg protein. Calmodulin appeared to be almost equally distributed between the axoneme and membrane plus matrix fractions; this distribution was not altered when demembration was carried out in the presence of EGTA instead of EDTA.

#### Comparison of Calmodulin and Low Molecular Weight Subunits of Dynein ATPases

Jamieson et al. (26) found that calmodulin was present in partially purified preparations of *Tetrahymena* dynein. Dyneins isolated from *Chlamydomonas* axonemes by KCl extraction

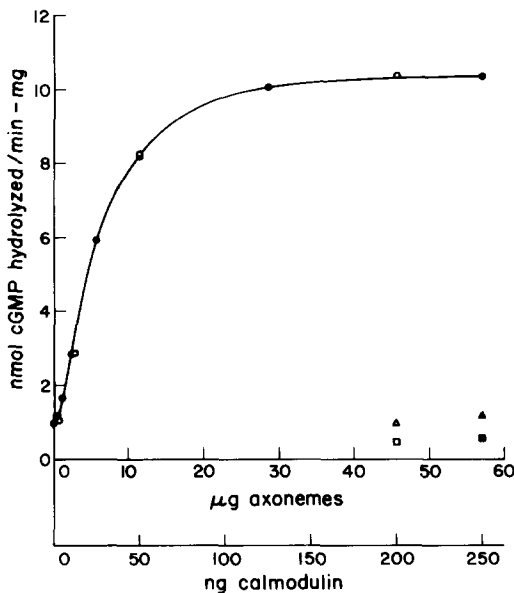


FIGURE 5 Activity of bovine brain cyclic nucleotide phosphodiesterase in the presence of various amounts of isolated axonemes (O) or bovine brain calmodulin (●). Assays were performed simultaneously, and the data for axonemes superimposed on the activation curve for brain calmodulin. In both cases, activation of phosphodiesterase was inhibited by 60  $\mu$ M fluphenazine ( $\Delta$ , axonemes;  $\blacktriangle$ , brain calmodulin) or 10 mM EGTA ( $\square$ , axonemes;  $\blacksquare$ , brain calmodulin). Phosphodiesterase activity is expressed as nanomoles cGMP hydrolyzed per minute-milligram of protein.

followed by sucrose density gradient centrifugation contain several low molecular weight subunits of approximately the same size as calmodulin (33 and footnote 1); to investigate the possibility that one of these subunits might actually be calmodulin, we compared the electrophoretic mobility of these polypeptides with that of purified *Chlamydomonas* calmodulin. As can be seen in Fig. 6, calmodulin coelectrophoresed with one of the low molecular weight subunits of 18S dynein in the presence of  $\text{Ca}^{++}$ . However, the mobility of this component did not change in the absence of  $\text{Ca}^{++}$ , indicating that this polypeptide is not identical with calmodulin.

## DISCUSSION

In the present study, we found that fluphenazine-Sepharose affinity chromatography of an extract of *Chlamydomonas* cell bodies yielded a single polypeptide which was remarkably similar to mammalian calmodulin in all physical and biochemical properties investigated. These similarities included (a) reversible,  $\text{Ca}^{++}$ -dependent binding to the phenothiazine fluphenazine, (b)  $\text{Ca}^{++}$ -dependent activation of cyclic nucleotide phosphodiesterase, (c) heat stability, and (d) electrophoretic mobility in SDS-polyacrylamide gels in the presence and absence of  $\text{Ca}^{++}$ . On the basis of these properties, we consider this protein to be a true calmodulin. This protein is probably the one previously detected in *Chlamydomonas* by means of a radioimmunoassay specific for calmodulin (10).

Although the radioimmunoassay of Chafouleas et al. (10) indicated significant levels of calmodulin in a supernate derived from a boiled sonicate of *Chlamydomonas*, they could detect no phosphodiesterase-stimulating activity in the same preparation. In contrast, we found that purified *Chlamydomonas* calmodulin activated bovine brain phosphodiesterase 10- to 11-fold. The most likely explanation for the difference between

our findings and those of Chafouleas et al. (10) is that their crude preparation contained a heat-stable inhibitor of the phosphodiesterase. Recently, Sharma et al. (36) described a heat-stable protein from bovine brain that inhibited cyclic nucleotide phosphodiesterase by binding to calmodulin; a similar protein may occur in *Chlamydomonas*. Such inhibitors are likely to be calmodulin-activated enzymes or proteins whose functions have yet to be defined.

Burgess et al. (9) reported that bovine brain calmodulin migrated in SDS-polyacrylamide gels with an apparent molecular weight of 21,000 when the sample buffer, reservoir buffer, and gel all contained EGTA, and with an apparent molecular weight of 15,000 when the EGTA was replaced with  $\text{Ca}^{++}$ . We found that a  $\text{Ca}^{++}$ -induced shift in the electrophoretic mobility of calmodulin occurred even if  $\text{Ca}^{++}$  or EGTA were included in only the sample buffer. The shift under these conditions was smaller than that observed by Burgess et al. (9); however, changing the components of only the sample buffer permitted comparison of the mobilities of proteins in the presence and absence of  $\text{Ca}^{++}$  in the same gel, and greatly facilitated comparisons of bands in crude fractions electrophoresed under the two conditions.

Our identification of calmodulin in the axoneme and membrane plus matrix fractions of the flagellum is based in part on our findings that these fractions contained a protein that comigrated with *Chlamydomonas* calmodulin in SDS-polyacrylamide gels in both the presence and absence of  $\text{Ca}^{++}$ . To the best of our knowledge, the large  $\text{Ca}^{++}$ -induced shift in mobility exhibited by this protein is unique to calmodulin. It should be noted that three other  $\text{Ca}^{++}$ -binding proteins—carp parvalbumin, troponin C, and bovine brain S-100b—undergo no change in electrophoretic mobility in SDS-polyacrylamide gels in the presence and absence of  $\text{Ca}^{++}$  (9).

Additional evidence for the presence of calmodulin in the flagellar fractions came from our findings that the heat-treated

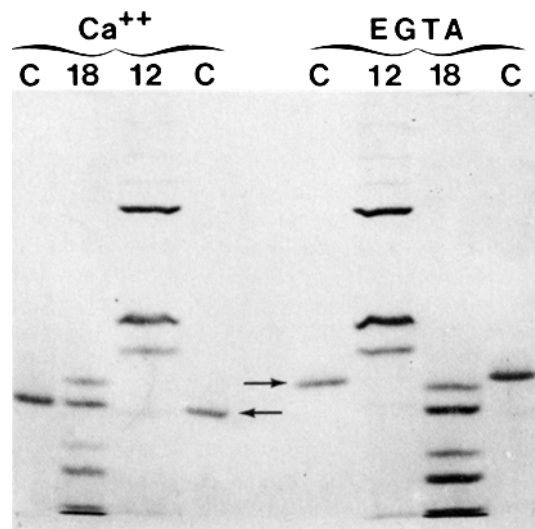


FIGURE 6 Portion of an SDS-polyacrylamide slab gel of purified *Chlamydomonas* calmodulin (C) and partially purified 12S (12) and 18S (18) dynein ATPases electrophoresed in the presence of 1 mM  $\text{Ca}^{++}$  or 1 mM EGTA, as indicated. Arrows indicate positions of calmodulin under the two conditions. The bands in the 18S dynein fraction all represent low molecular weight subunits of the 18S dynein; the darker bands in the 12S fraction represent components of the 12S dyneins. None of the low molecular weight dynein subunits underwent a  $\text{Ca}^{++}$ -induced shift in mobility.

fractions activated cyclic nucleotide phosphodiesterase in a  $\text{Ca}^{++}$ -dependent, fluphenazine-sensitive manner. Such a behavior in the phosphodiesterase assay is a distinguishing feature of calmodulin (46). Both the electrophoretic data and the phosphodiesterase studies, therefore, clearly indicated that calmodulin was present in the axoneme and membrane plus matrix fractions.

We do not yet know the exact location or locations of calmodulin within the flagellum. Interestingly, the fact that calmodulin appeared to be present in axonemes isolated in the presence of EGTA or EDTA indicates that some of the calmodulin remains bound to an axonemal component even in the absence of  $\text{Ca}^{++}$ . An analogous situation exists in the brush border of chicken intestinal epithelial cells, where calmodulin is tightly associated with the microvillus core in the absence of  $\text{Ca}^{++}$  (23).

Jamieson et al. (26) found that calmodulin was present in partially purified preparations of dynein from *Tetrahymena*; more recently, these investigators have demonstrated that the dyneins of *Tetrahymena* contain a calmodulin binding site and are activated by calmodulin.<sup>4</sup> *Chlamydomonas* dyneins contain several low molecular weight subunits (33 and footnote 1); however, none of these comigrated with *Chlamydomonas* calmodulin in both the presence and absence of  $\text{Ca}^{++}$ . Calmodulin is, therefore, not associated with *Chlamydomonas* dynein as isolated by our procedures. This does not rule out the possibility that calmodulin may associate reversibly with the dyneins of this organism *in situ*. Alternatively, dynein *in situ* may be associated with a protein closely related to calmodulin which shares protein binding domains and functional properties with calmodulin. If stripped of that subunit *in vitro*, dynein might then bind and be activated by exogenous calmodulin. The subunit of the 18S dynein that coelectrophoresed with calmodulin only in the presence of  $\text{Ca}^{++}$  might be such a protein. As noted above, other members of the troponin C superfamily of  $\text{Ca}^{++}$  binding proteins do not exhibit the  $\text{Ca}^{++}$ -induced shift in mobility in SDS-polyacrylamide gels (9).

The occurrence of calmodulin in the *Chlamydomonas* flagellum suggests that it is involved in the regulation of one or more of the  $\text{Ca}^{++}$ -dependent phenomena that occur in this organelle. Further evidence for a possible role for calmodulin in these processes comes from a recent study of Hirschberg and Hutchinson (22) on the effect of chlorpromazine on the phototaxis and motility of *Chlamydomonas*. These investigators found that, at moderate light intensities, 6  $\mu\text{M}$  chlorpromazine caused a reversal in the direction of phototaxis and 50  $\mu\text{M}$  chlorpromazine completely inhibited motility. The latter effect occurred in that concentration range at which chlorpromazine binds to calmodulin and inhibits the activation of bovine brain phosphodiesterase (30, 43) and adenylate cyclase (8); inhibition of motility in *Chlamydomonas* may, therefore, have been a result of binding of the drug to calmodulin with a consequent effect on one of the enzyme systems involved in flagellar movement. Significantly, Reed and Satir<sup>5</sup> have recently found that 25  $\mu\text{M}$  trifluoperazine reversed the  $\text{Ca}^{++}$ -induced arrest of reactivated cilia of detergent permeabilized mussel gill lateral cells; this result strongly suggests that calmodulin is involved in the regulation of ciliary activity in these cells. Studies are currently

under way to determine if calmodulin has any direct role in either the motility or the  $\text{Ca}^{++}$ -induced change in waveform of isolated, reactivated axonemes of *Chlamydomonas* (3).

*Chlamydomonas* is one of the most primitive organisms from which calmodulin has been isolated. The fact that *Chlamydomonas* calmodulin is similar to or identical with mammalian calmodulin in all biochemical and biological properties tested, which include immunological cross-reactivity (10), phenothiazine binding, and activation of cyclic nucleotide phosphodiesterase, indicates that the structure of the protein has been very highly conserved throughout evolution. This is in good agreement with studies on the primary structures of calmodulin from two vertebrates (15, 21, 42) and a coelenterate (39), and would be expected for a protein involved in multiple diverse functions of fundamental importance. Calmodulin is thought to be the most ancient of a number of related  $\text{Ca}^{++}$ -binding proteins (13); it will, therefore, be particularly interesting to obtain information on the amino acid sequence of calmodulin from *Chlamydomonas*.

We thank Doctors Fred Schachat, Thomas Vanaman, and Donald Wolff for teaching us several of the experimental methods used in this work, and Doctors Burgess, Cormier, Jamieson, Vanaman, and Wolff for providing us with copies of their manuscripts before publication. We are grateful to Dr. Cerli Gattass, Dr. Charlotte Omoto, Nick Minervini, and Kevin Pfister for thoughtful discussions and expert assistance throughout the course of this study.

This research was supported by a grant from The Whitehall Foundation and by National Institutes of Health grant GM 21586 awarded to George Witman.

Received for publication 25 February 1980, and in revised form 18 August 1980.

## REFERENCES

- Andersen, B., M. Osborn, and K. Weber. 1978. Specific visualization of the distribution of the calcium dependent regulatory protein of cyclic nucleotide phosphodiesterase (modulator protein) in tissue culture cells by immunofluorescence microscopy: mitosis and intercellular bridge. *Cytobiologie*. 17:354-364.
- Anderson, J. M., and M. J. Cormier. 1978. Calcium-dependent regulator of NAD kinase in higher plants. *Biochem. Biophys. Res. Commun.* 84:595-602.
- Bessen, M., R. B. Fay, and G. B. Witman. 1980. Calcium control of waveform in isolated flagellar axonemes of *Chlamydomonas*. *J. Cell Biol.* 86:446-455.
- Bloodgood, R. A., E. M. Leffler, and A. T. Bojczuk. 1979. Reversible inhibition of *Chlamydomonas* flagellar surface motility. *J. Cell Biol.* 82:664-674.
- Bradford, M. M. 1976. A rapid and sensitive method for the quantitation of microgram quantities of protein utilizing the principle of protein-dye binding. *Anal. Biochem.* 72:248-254.
- Brokaw, C. J. 1974. Calcium and flagellar response during the chemotaxis of bracken spermatozooids. *J. Cell Physiol.* 83:151-158.
- Brostrom, C. O., Y.-C. Huang, B. McL. Breckenridge, and D. J. Wolff. 1975. Identification of a calcium-binding protein as a calcium-dependent regulator of brain adenylate cyclase. *Proc. Natl. Acad. Sci. U. S. A.* 72:64-68.
- Brostrom, M. A., C. O. Brostrom, B. McL. Breckenridge, and D. J. Wolff. 1978. Calcium-dependent regulation of brain adenylate cyclase. *Adv. Cyclic Nucleotide Res.* 9:85-99.
- Burgess, W. H., D. K. Jemiole, and R. H. Kretsinger. 1980. Interaction of calcium and calmodulin in the presence of sodium dodecyl sulfate. *Biochim. Biophys. Acta.* 623:257-270.
- Chafouleas, J. G., J. R. Dedman, R. P. Munjaal, and A. R. Means. 1979. Calmodulin. Development and application of a sensitive radioimmunoassay. *J. Biol. Chem.* 254:10262-10267.
- Charbonneau, H., and M. J. Cormier. 1979. Purification of plant calmodulin by fluphenazine-sepharose affinity chromatography. *Biochem. Biophys. Res. Commun.* 90:1039-1047.
- Cheung, W. Y. 1971. Cyclic 3',5'-nucleotide phosphodiesterase. Evidence for and properties of a protein activator. *J. Biol. Chem.* 246:2859-2869.
- Cheung, W. Y. 1980. Calmodulin plays a pivotal role in cellular regulation. *Science (Wash. D. C.)*. 207:19-27.
- Dabrowska, R., J. M. F. Sherry, D. K. Aromatorio, and D. J. Hartshorne. 1978. Modulator protein as a component of the myosin light chain kinase from chicken gizzard. *Biochemistry*. 17:253-258.
- Dedman, J. R., R. L. Jackson, W. E. Schreiber, and A. R. Means. 1978. Sequence homology of the  $\text{Ca}^{++}$ -dependent regulator of cyclic nucleotide phosphodiesterase from rat testes with other  $\text{Ca}^{++}$ -binding proteins. *J. Biol. Chem.* 253:343-346.
- Dedman, J. R., M. J. Welsh, and A. R. Means. 1978.  $\text{Ca}^{++}$ -dependent regulator. Production and characterization of a monospecific antibody. *J. Biol. Chem.* 253:7515-7521.
- Eckert, R., Y. Naitoh, and H. Machemer. 1976. Calcium in the bioelectric and motor functions of *Paramecium*. *Symp. Soc. Exp. Biol.* 30:233-255.
- Fay, R. B., and G. B. Witman. 1977. The localization of flagellar ATPases in *Chlamydomonas reinhardtii*. *J. Cell Biol.* 75:286a (Abstr.).

<sup>4</sup> Blum, J. J., A. Hayes, G. A. Jamieson, Jr., and T. C. Vanaman. 1980. Calmodulin confers calcium sensitivity on ciliary dynein ATPase. Manuscript submitted for publication.

<sup>5</sup> Reed, W., and P. Satir. Presence of calmodulin in gill cells of fresh water mussels. Manuscript submitted for publication.

19. Gibbons, B. H., and I. R. Gibbons. 1980. Calcium-induced quiescence in reactivated sea urchin sperm. *J. Cell Biol.* 84:13-27.
20. Gopinath, R. M., and F. F. Vincenzi. 1977. Phosphodiesterase protein activator mimics red blood cell cytoplasmic activator of ( $\text{Ca}^{++}$ - $\text{Mg}^{2+}$ ) ATPase. *Biochem. Biophys. Res. Commun.* 77:1203-1209.
21. Grand, R. J. A., and S. V. Perry. 1978. The amino acid sequence of the troponin C-like protein (modulator protein) from bovine uterus. *FEBS (Fed. Eur. Biochem. Soc.) Lett.* 92: 137-142.
22. Hirschberg, R., and W. Hutchinson. 1980. Effect of chlorpromazine on phototactic behavior in *Chlamydomonas*. *Can. J. Microbiol.* 26:265-267.
23. Howe, C. L., M. S. Mooseker, and T. A. Graves. 1980. Brush border calmodulin. A major component of the isolated microvillus core. *J. Cell Biol.* 85:916-923.
24. Hyams, J. S., and G. G. Borisy. 1978. Isolated flagellar apparatus of *Chlamydomonas*: characterization of forward swimming and alteration of waveform and reversal of motion by calcium ions in vitro. *J. Cell Sci.* 33:235-253.
25. Jamieson, G. A., Jr., and T. C. Vanaman. 1979. Calcium-dependent affinity chromatography of calmodulin on an immobilized phenothiazine. *Biochem. Biophys. Res. Commun.* 90:1048-1056.
26. Jamieson, G. A., Jr., T. C. Vanaman, and J. J. Blum. 1979. Presence of calmodulin in *Tetrahymena*. *Proc. Natl. Acad. Sci. U. S. A.* 76:6471-6475.
27. Jarrett, H. W., and J. T. Penniston. 1978. Purification of the  $\text{Ca}^{++}$ -stimulated ATPase activator from human erythrocytes. Its membership in the class of  $\text{Ca}^{++}$ -binding modulator proteins. *J. Biol. Chem.* 253:4676-4682.
28. Laemmli, U. K., and M. Favre. 1973. Maturation of the head of bacteriophage T<sub>4</sub>. I. DNA packaging events. *J. Mol. Biol.* 80:575-599.
29. Lefebvre, P. A., S. A. Nordstrom, J. E. Moulder, and J. L. Rosenbaum. 1978. Flagellar elongation and shortening in *Chlamydomonas*. IV. Effect of flagellar detachment, regeneration and resorption on the induction of flagellar protein synthesis. *J. Cell Biol.* 78:8-27.
30. Levin, R. M., and B. Weiss. 1976. Mechanism by which psychotropic drugs inhibit adenosine 3',5'-monophosphate phosphodiesterase of brain. *Mol. Pharmacol.* 12:581-589.
31. Maihle, N. J., R. S. Garofalo, and B. H. Satir. 1979. Biochemical characterization and indirect immunofluorescent localization of calmodulin in *Paramecium tetraurelia*. *J. Cell Biol.* 83:476 a (Abstr.).
32. Marcum, J. M., J. R. Dedman, B. R. Brinkley, and A. R. Means. 1978. Control of microtubule assembly-disassembly by calcium-dependent regulator protein. *Proc. Natl. Acad. Sci. U. S. A.* 75:3771-3775.
33. Piperno, G., and D. J. L. Luck. 1979. Axonemal adenosine triphosphatases from flagella of *Chlamydomonas reinhardtii*. Purification of two dyneins. *J. Biol. Chem.* 254:3084-3090.
34. Quader, H., J. Cherniack, and P. Filner. 1978. Participation of calcium in flagellar shortening and regeneration in *Chlamydomonas reinhardtii*. *Exp. Cell Res.* 113:295-301.
35. Schmidt, J. A., and R. Eckert. 1976. Calcium couples flagellar reversal to photostimulation in *Chlamydomonas reinhardtii*. *Nature (Lond.)* 262:713-715.
36. Sharma, R. K., E. Wirch, and J. H. Wang. 1978. Inhibition of  $\text{Ca}^{++}$ -activated cyclic nucleotide phosphodiesterase reaction by a heat-stable inhibitor protein from bovine brain. *J. Biol. Chem.* 253:3575-3580.
37. Stavis, R. L., and R. Hirschberg. 1973. Phototaxis in *Chlamydomonas reinhardtii*. *J. Cell Biol.* 59:367-377.
38. Sundberg, L., and J. Porath. 1974. Preparation of adsorbents for biospecific-affinity chromatography. I. Attachment of group-containing ligands to insoluble polymers by means of bifunctional oxiranes. *J. Chromatogr.* 90:87-98.
39. Vanaman, T. C., and F. Sharief. 1979. Structural properties of calmodulin from divergent eucaryotic organisms. *Fed. Proc.* 38:789.
40. Walter, M. F., and P. Satir. 1978. Calcium control of ciliary arrest in mussel gill cells. *J. Cell Biol.* 79:110-120.
41. Watterson, D. M., W. G. Harrelson, Jr., P. M. Keller, F. Sharief, and T. C. Vanaman. 1976. Structural similarities between the  $\text{Ca}^{++}$ -dependent regulatory proteins of 3':5'-cyclic nucleotide phosphodiesterase and actomyosin ATPase. *J. Biol. Chem.* 251:4501-4513.
42. Watterson, D. M., F. Sharief, and T. C. Vanaman. 1980. The complete amino acid sequence of the  $\text{Ca}^{++}$ -dependent modulator protein (calmodulin) of bovine brain. *J. Biol. Chem.* 255:962-975.
43. Weiss, B., and R. M. Levin. 1978. Mechanism for selectively inhibiting the activation of cyclic nucleotide phosphodiesterase and adenylate cyclase by antipsychotic agents. *Adv. Cyclic Nucleotide Res.* 9:285-303.
44. Welsh, M. J., J. R. Dedman, B. R. Brinkley, and A. R. Means. 1978. Calcium-dependent regulator protein: localization in mitotic apparatus of eukaryotic cells. *Proc. Natl. Acad. Sci. U. S. A.* 75:1867-1871.
45. Witman, G. B., J. Plummer, and G. Sander. 1978. *Chlamydomonas* flagellar mutants lacking radial spokes and central tubules. Structure, composition, and function of specific axonemal components. *J. Cell Biol.* 76:729-747.
46. Wolff, D. J., and C. O. Brostrom. 1979. Properties and functions of the calcium-dependent regulator protein. *Adv. Cyclic Nucleotide Res.* 11:27-88.
47. Yagi, K., M. Yazawa, S. Kakiuchi, M. Ohshima, and K. Uenishi. 1978. Identification of an activator protein for myosin light chain kinase as the  $\text{Ca}^{++}$ -dependent modulator protein. *J. Biol. Chem.* 253:1338-1340.