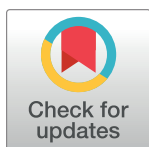


CORRECTION

## Correction: Gender disparities in depression severity and coping among people living with HIV/AIDS in Kolkata, India

Dallas Swendeman, Anne E. Fehrenbacher, Soma Roy, Rishi Das, Protim Ray, Stephanie Sumstine, Toorjo Ghose, Smarajit Jana

There are errors in the caption for [Fig 2](#). Please see the complete, correct [Fig 2](#) caption here.  
There are errors in the caption for [Fig 3](#). Please see the complete, correct [Fig 3](#) caption here.



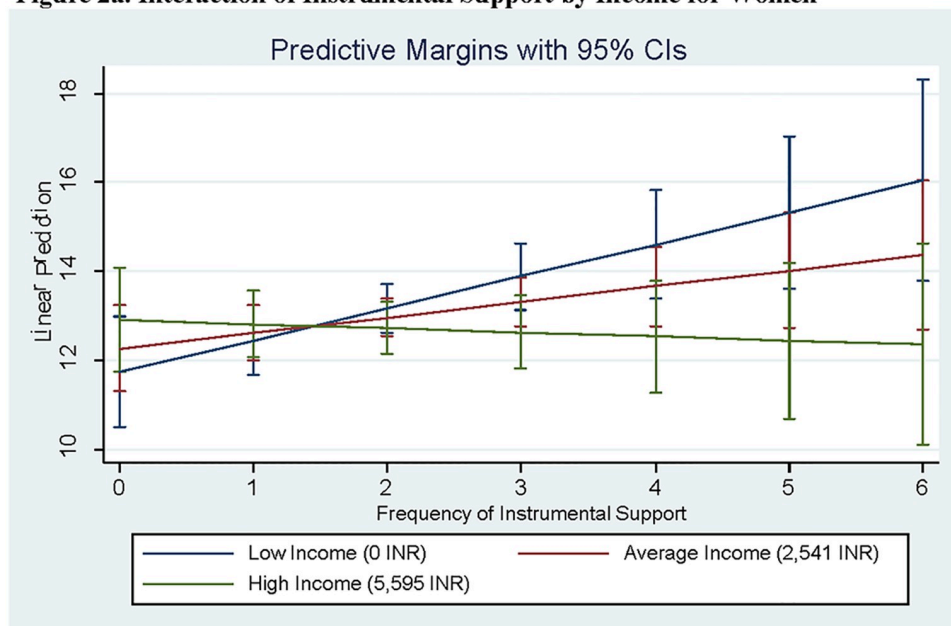
### OPEN ACCESS

**Citation:** Swendeman D, Fehrenbacher AE, Roy S, Das R, Ray P, Sumstine S, et al. (2019) Correction: Gender disparities in depression severity and coping among people living with HIV/AIDS in Kolkata, India. PLoS ONE 14(2): e0213093. <https://doi.org/10.1371/journal.pone.0213093>

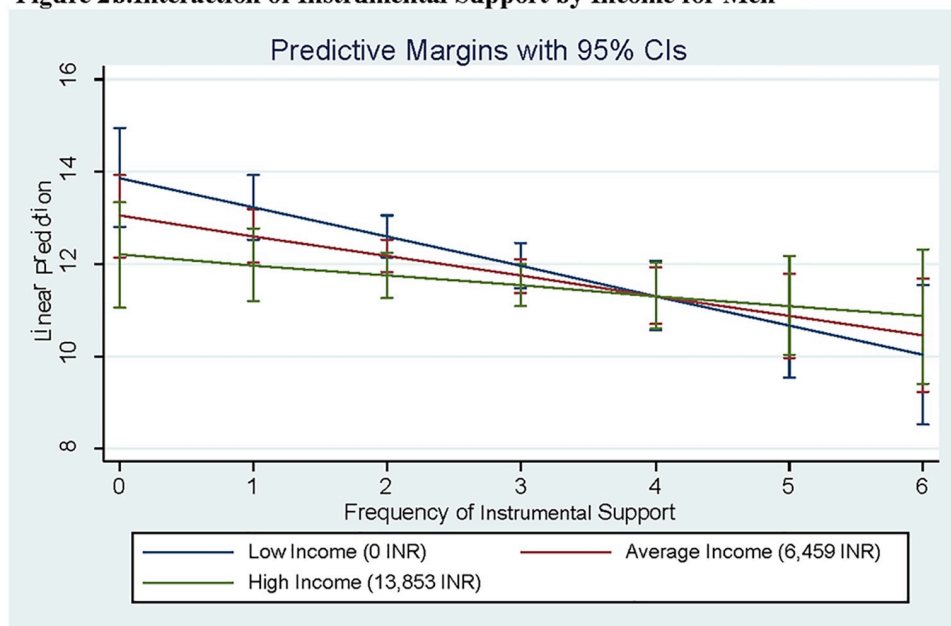
**Published:** February 22, 2019

**Copyright:** © 2019 Swendeman et al. This is an open access article distributed under the terms of the [Creative Commons Attribution License](#), which permits unrestricted use, distribution, and reproduction in any medium, provided the original author and source are credited.

**Figure 2a. Interaction of Instrumental Support by Income for Women**



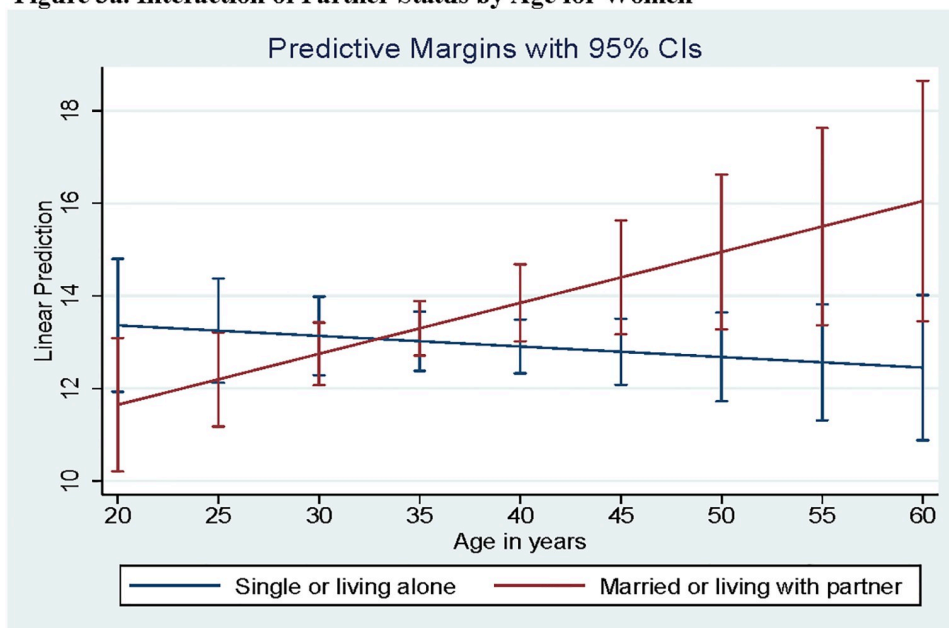
**Figure 2b. Interaction of Instrumental Support by Income for Men**



**Fig 2. a) Interaction of Instrumental Support by Income for Women. b) Interaction of Instrumental Support by Income for Men.** Average Income = mean monthly income per respondent. Low Income = 1 standard deviation below the mean or 0 if negative. High Income = 1 standard deviation above the mean.

<https://doi.org/10.1371/journal.pone.0213093.g001>

**Figure 3a. Interaction of Partner Status by Age for Women**



**Figure 3b. Interaction of Partner Status by Age for Men**



**Fig 3.** a) Interaction of Partner Status by Age for Women. b) Interaction of Partner Status by Age for Men.

<https://doi.org/10.1371/journal.pone.0213093.g002>

## Reference

1. Swendeman D, Fehrenbacher AE, Roy S, Das R, Ray P, Sumstine S, et al. (2018) Gender disparities in depression severity and coping among people living with HIV/AIDS in Kolkata, India. *PLoS ONE* 13 (11): e0207055. <https://doi.org/10.1371/journal.pone.0207055> PMID: 30462688