

Case Report

Open Access

Diffuse cardiac lymphatic involvement by metastatic neuroendocrine carcinoma mimicking hypertrophic cardiomyopathy: a case report

Takeshi Kondo*, Riko Kitazawa, Emiko Kawata, Kiyoshi Mori and Sohei Kitazawa

Address: Division of Pathology (Diagnostic Molecular Pathology Unit), Kobe University Graduate School of Medicine, 7-5-1 Kusunoki-cho, Chuo-ku, Kobe 650-0017, Japan

Email: Takeshi Kondo* - kondo@med.kobe-u.ac.jp; Riko Kitazawa - riko@med.kobe-u.ac.jp; Emiko Kawata - 0723527m@stu.kobe-u.ac.jp; Kiyoshi Mori - kiyoshim@med.kobe-u.ac.jp; Sohei Kitazawa - kitazawa@med.kobe-u.ac.jp

* Corresponding author

Published: 2 December 2009

Received: 20 October 2009

Cases Journal 2009, **2**:9127 doi:10.1186/1757-1626-2-9127

Accepted: 2 December 2009

This article is available from: <http://www.casesjournal.com/content/2/1/9127>

© 2009 Kondo et al; licensee BioMed Central Ltd.

This is an Open Access article distributed under the terms of the Creative Commons Attribution License (<http://creativecommons.org/licenses/by/2.0>), which permits unrestricted use, distribution, and reproduction in any medium, provided the original work is properly cited.

Abstract

We describe an autopsy case of non-functioning pancreatic neuroendocrine carcinoma metastasizing to the myocardium. A 63-year-old Japanese man was admitted to the hospital presenting with dyspnea. Echocardiography revealed marked left ventricular hypertrophy and diffuse myocardial thickening with pericardial effusion. The patient died of heart failure. An autopsy revealed that the whole pancreas, weighing 400 g, was occupied by tumor cells with neuroendocrine differentiation. The heart, weighing 780 g, showed numerous metastatic nodules and diffuse myocardial thickening. Histopathologically, the tumor was diagnosed as non-functioning pancreatic neuroendocrine carcinoma. Immunohistochemical analysis for D2-40 disclosed severe lymphatic infiltration of tumor cells, characterized by diffuse thickening of the myocardium.

Introduction

Pancreatic neuroendocrine tumors are rare neoplasms accounting for less than 5% of all primary pancreatic malignancies [1]. Non-functioning pancreatic neuroendocrine tumors demonstrate endocrine differentiation but lack a clinical syndrome of hormone hypersecretion. Presentation is related to the mass effect of the tumor, and patients can present with advanced metastatic disease but relatively few symptoms [1]. Here, an autopsy case of non-functioning pancreatic neuroendocrine carcinoma metastasizing to the myocardium is reported.

Case presentation

A 63-year-old Japanese man was admitted to our hospital complaining of dyspnea. He had a history of smoking (30

cigarettes a day for 40 years) and had been diagnosed as hypertensive in the past. Echocardiography revealed marked left ventricular hypertrophy and diffuse myocardial thickening with pericardial effusion, simulating hypertrophic cardiomyopathy. Computed tomography (CT) revealed multiple lymphadenosis of the superior mediastinum, the neck and the hilum of the lung. Biopsies of cervical lymph nodes and the pericardium revealed metastatic neuroendocrine tumor suggestive of pancreatic, digestive tract, or lung origin. A cytologic examination from pericardial effusion was negative for malignancy. Although the primary site was not identified, the tumor was diagnosed as metastatic atypical carcinoid. After two courses of anticancer chemotherapy (carboplatin, irinotecan), the patient underwent radiation therapy.



Figure 1
Macroscopic findings of the pancreas. A: pancreas, weighing 400 g, was occupied by the tumor. B: on the cut surface, residual pancreatic tissue was not macroscopically identifiable.

In spite of the intensive treatment, severe heart failure and anemia developed gradually. The patient died of heart failure, and an autopsy was conducted to disclose the origin of the cancer and the nature of the systemic disease, including cardiac muscle lesions.

Pathologic Findings

Grossly, the whole pancreas, weighing 400 g, was occupied by a tumor (Fig. 1AB) of cells with a characteristic nested or trabecular growth pattern suggesting neuroendocrine differentiation (Fig. 2A). Immunohistochemically, the tumor cells were positive for major neuroendocrine markers, such as synaptophysin, NCAM (CD56), and chromogranin A (Fig. 2BCD). On the other hand, the heart weighed 780 g and showed numerous metastatic nodules and diffuse myocardial thickening (Fig. 3A). Metastatic tumor cells invaded the myocardium with stromal edema (Fig. 3B). Moreover, immunohistochemical analysis for D2-40 demonstrated severe lymphatic infiltration of tumor cells (Fig. 3C). Aggressive metastasis was confirmed at various loci including the liver, lungs, pleura, kidneys, spleen, adrenal glands, vertebrae, ribs, and lymph nodes. Based on the above findings,

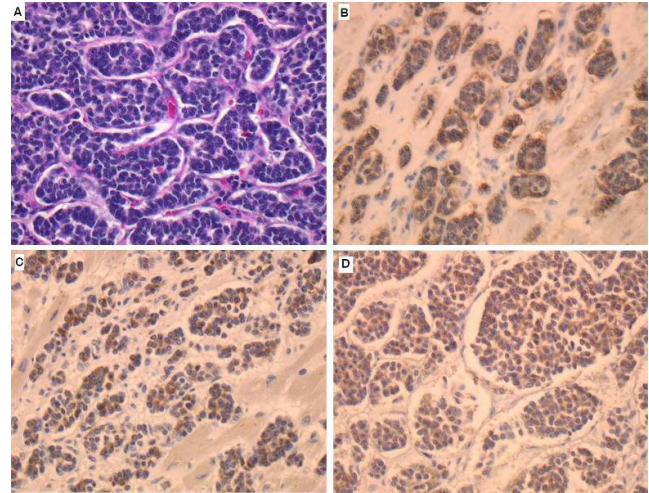


Figure 2
Microscopic findings of the tumor. A: the tumor cells showed nested or trabecular architecture suggesting neuroendocrine differentiation. B, C and D: tumor cells were positive for neuroendocrine markers (synaptophysin (B), NCAM (CD56) (C), and chromogranin A (D)).

the tumor was diagnosed as primary pancreatic neuroendocrine carcinoma with systemic metastases.

Discussion

Non-functioning pancreatic endocrine carcinomas are hormonally silent by definition. Growing large, they display symptoms attributable to local disease or distant metastases. In autopsy series, the heart is a relatively common site for metastatic tumors, which are at least 100 times more common than primary malignant cardiac tumors [2,3]. The incidence of cardiac metastases is on the rise due to longer patient survival attendant upon improved chemotherapy and radiotherapy, coupled with increasingly sensitive diagnostic modalities. Although difficult to define, the incidence of cardiac involvement in patients with malignant neoplasms is probably above 10% [4]. Metastases reach the heart and the pericardium through retrograde lymphatic spread, the bloodstream, direct invasion, or by direct venous extension. In our present case, myocardial metastases reflected severe lymphatic invasion of tumor cells. Myocardial metastases directly from neuroendocrine carcinoma are rare, with a reported incidence of 2% to 4%, and usually found in patients with widespread metastatic disease and extensive liver infiltration [5,6]. Interestingly, a similar case of myocardial metastasis from pancreatic carcinoma (specific histology unknown) presenting as acute myocardial infarction was reported [7]. Myocardial metastases may cause an unexpected cardiac manifestation.

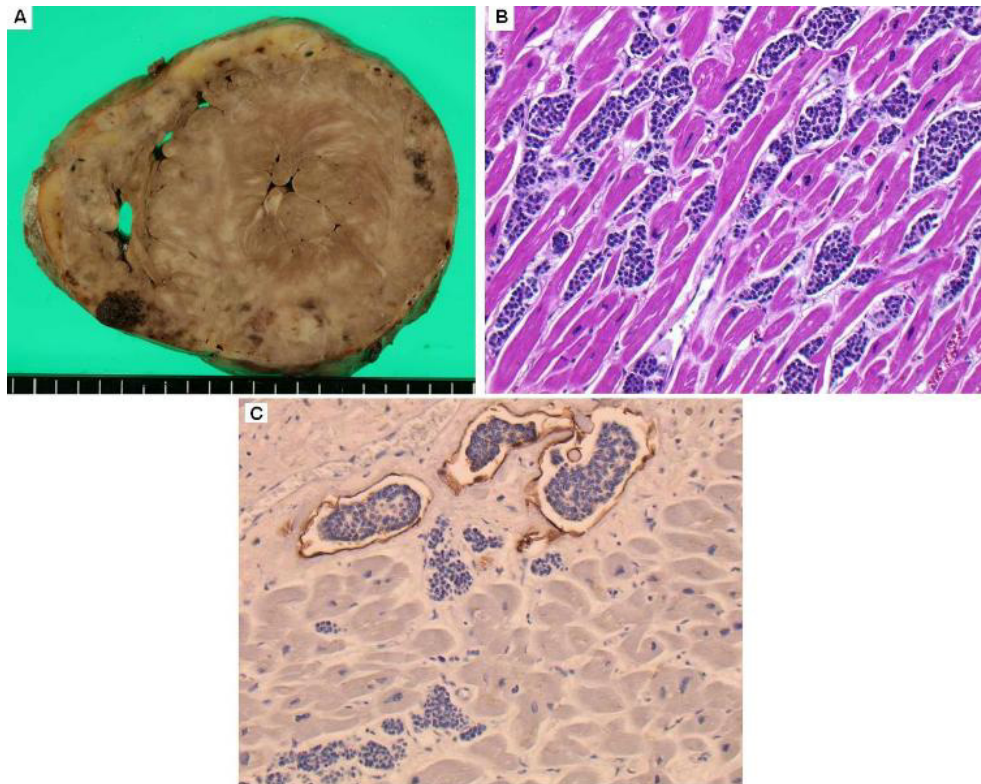


Figure 3

Macroscopic and microscopic findings of the heart. A: cut surface of the heart. The heart weighed 780 g and showed numerous metastatic nodules and diffuse myocardial thickening, simulating hypertrophic cardiomyopathy. B: metastatic tumor cells invaded the myocardium with stromal edema (HE). C: immunohistochemical analysis for D2-40 demonstrated severe lymphatic infiltration of tumor cells.

In conclusion, a rare autopsy case of non-functioning pancreatic neuroendocrine carcinoma metastasizing to myocardium and mimicking hypertrophic cardiomyopathy is reported.

Consent

Written informed consent was obtained from the patient for the publication of this case report with accompanying images. A copy of the written consent is available for reviewing by the Editor-in-Chief of the journal.

Competing interests

The authors declare that they have no competing interests.

Authors' contributions

All authors analyzed and interpreted the autopsy data. RK and SK performed autopsy and histological examinations. EK and KM assisted with the histological examinations. TK is the major contributor to the writing of the manuscript. SK supported the case analysis and the writing of the manuscript. All authors read and approved the final manuscript.

Acknowledgements

We thank Miki Zenigami-Yamazaki, Noriko Sakamoto, and Shuichi Matsuda at Kobe University for their excellent technical assistance, and Dr. Junko Ishii at Kobe City Medical Center General Hospital for helpful discussions.

References

- O'Grady HL, Conlon KC: **Pancreatic neuroendocrine tumours.** *Eur J Surg Oncol* 2008, **34**:324-332.
- Hanfling SM: **Metastatic cancer to the heart. Review of the literature and report of 127 cases.** *Circulation* 1960, **22**:474-483.
- Schoen FJ, Berger BM, Guerin NG: **Cardiac effects of noncardiac neoplasms.** *Cardiol Clin* 1984, **2**:657-670.
- Klatt EC, Heitz DR: **Cardiac metastases.** *Cancer* 1990, **65**:1456-1459.
- Pellikka PA, Tajik AJ, Khandheria BK, Seward JB, Callahan JA, Pitot HC, Kvols LK: **Carcinoid heart disease. Clinical and echocardiographic spectrum in 74 patients.** *Circulation* 1993, **87**:1118-1196.
- Pandya UH, Pellikka PA, Enriquez-Sarano M, Edwards WD, Schaff HV, Connolly HM: **Metastatic carcinoid tumor to the heart: echocardiographic-pathologic study of 11 patients.** *J Am Coll Cardiol* 2002, **40**:1328-1332.
- Robinson BW, Lewis RR: **Myocardial metastasis from carcinoma of pancreas presenting as acute myocardial infarction.** *J R Soc Med* 1982, **75**:560-562.