



ICTV Virus Taxonomy Profile: *Nanoviridae*

John E. Thomas^{1,*}, Bruno Gronenborn², Robert M. Harding³, Bikash Mandal⁴, Ioana Grigoras⁵, John W. Randles⁶, Yoshitaka Sano⁷, Tania Timchenko², H. Josef Vetten⁸, Hsin-Hung Yeh⁹, Heiko Ziebell¹⁰ and ICTV Report Consortium

Abstract

Nanoviridae is a family of plant viruses (nanovirids) whose members have small isometric virions and multipartite, circular, single-stranded (css) DNA genomes. Each of the six (genus *Babuvirus*) or eight (genus *Nanovirus*) genomic DNAs is 0.9–1.1 kb and is separately encapsidated. Many isolates are associated with satellite-like cssDNAs (alphasatellites) of 1.0–1.1 kb. Hosts are eudicots, predominantly legumes (genus *Nanovirus*), and monocotyledons, predominantly in the order Zingiberales (genus *Babuvirus*). Nanovirids require a virus-encoded helper factor for transmission by aphids in a circulative, non-propagative manner. This is a summary of the ICTV Report on the family *Nanoviridae*, which is available at ictv.global/report/nanoviridae.

Table 1. Characteristics of members of the family *Nanoviridae*

Example:	subterranean clover stunt virus [AU;2534B] (MK035728–MK035735), species <i>Subterranean clover stunt virus</i> , genus <i>Nanovirus</i>
Virion	17–19 nm isometric particles, containing a single capsid protein
Genome	Multipartite, cssDNA, comprising six (each 1.0–1.1 kb; <i>Babuvirus</i>) or eight (each 0.9–1.0 kb; <i>Nanovirus</i>) components
Replication	Nuclear, by rolling-circle replication using host DNA polymerase
Translation	From transcripts of dsDNA intermediates, with the aid of host DNA and RNA polymerases
Host range	Eudicots, mainly Fabaceae (genus <i>Nanovirus</i>); monocotyledons, order Zingiberales (genus <i>Babuvirus</i>); transmitted by specific aphid vectors
Taxonomy	Realm <i>Monodnaviria</i> , kingdom <i>Shotokuvirae</i> , phylum <i>Cressdnaviricota</i> , class <i>Arfiviricetes</i> , order <i>Mulpavirales</i> ; two genera including >10 species

VIRION

Nanovirid virions are small isometric particles 17–19 nm in diameter, with a probable $T=1$ symmetry and often displaying a hexagonal profile (Table 1, Fig. 1) comprising DNA and a single species of capsid protein.

GENOME

Based on infectivity studies, the genomes of members of the genus *Nanovirus* are thought to comprise eight independently encapsidated circular, single-stranded (css)DNA components, each of 0.9–1.0 kb [1]. Babuviruses have six such

components, each of 1.0–1.1 kb. Viruses in the two genera share a set of five homologous DNA components, referred to as DNA-R (encoding M-Rep), DNA-S (capsid protein), DNA-C (Clink), DNA-M (movement protein) and DNA-N (nuclear shuttle protein) (Fig. 2). DNAs encoding proteins of unknown function have been identified from nanoviruses (DNA-U1, DNA-U2 and DNA-U4) and babuviruses (DNA-U3, potentially expressed in some banana bunchy top virus isolates only) [2]. Autonomously replicating, independently encapsidated alphasatellite molecules of 1.0–1.1 kb are associated with many isolates of viruses in both genera [3]. Nanovirids are unique among circulatively and non-propagatively

Received 24 November 2020; Accepted 01 December 2020; Published 12 January 2021

Author affiliations: ¹QAAFI, The University of Queensland, GPO Box 267, Brisbane, Queensland 4001, Australia; ²CNRS, Université Paris-Sud, CEA, 91190 Gif-sur-Yvette, France; ³Queensland University of Technology, GPO Box 2434, Brisbane, Queensland 4001, Australia; ⁴Division of Plant Pathology, Indian Agricultural Research Institute, New Delhi 110012, India; ⁵Université d'Evry Val d'Essonne, 91030 Evry, Ile-de-France, France; ⁶The University of Adelaide, Waite Campus, PMB Glen Osmond, SA 5064, Australia; ⁷Niigata University, 2-8050 Ikarashi, Niigata, 950-2181, Japan; ⁸Im Spargelfeld 1, 38162 Cremlingen, Germany; ⁹Taipei Agricultural Biotechnology Research Center, Academia Sinica, Taipei, 115, Taiwan, ROC; ¹⁰Julius Kühn-Institut, Messeweg 11-12, 38104 Braunschweig, Germany.

*Correspondence: John E. Thomas, j.thomas2@uq.edu.au

Keywords: Nanoviridae; ICTV Report; taxonomy.

Abbreviations: CR-M, CR-II, second common region; CR-SL, common region-stem loop; css, circular, single-stranded.

001544 © 2021



This is an open-access article distributed under the terms of the Creative Commons Attribution License.

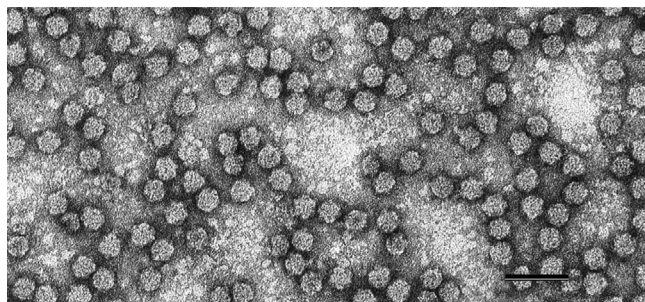


Fig. 1. Negative-contrast electron micrograph of particles of faba bean necrotic yellows virus. Bar, 50 nm. (Courtesy of L. Katul and D.-E. Lesemann.)

transmitted plant viruses in requiring a virus-encoded helper factor for vector transmission by aphids [4].

REPLICATION

All nanovirid genomic DNAs have a similar structural organization, containing conserved inverted repeat sequences potentially forming a stem-loop structure within a common region-stem loop (CR-SL) that also contains three short repeated sequences (iterons), presumed to be binding sites for M-Rep. A second common region, conserved within virus genomes, is named CR-M (babuviruses) or CR-II (nanoviruses) (Fig. 2). Each DNA component encodes a single protein (with the single exception of banana bunchy top virus DNA-R which has a second smaller ORF, located within the larger ORF). Replication is thought to occur in the nucleus by a rolling-circle mechanism with synthesis of viral dsDNA by host DNA polymerase and mRNA transcribed by host RNA polymerase. M-Rep has DNA cleavage and nucleotidyl transferase activity and is thought to trigger replication initiation of all genomic DNAs.

TAXONOMY

Current taxonomy: ictv.global/taxonomy. Nanoviruses have mostly been isolated from legumes, while babuviruses infect monocots such as banana [5], abaca and cardamom [6]. Individual viruses are transmitted by one or a few aphid species [4].

RESOURCES

Full ICTV Report on the family *Nanoviridae*: ictv.global/report/nanoviridae.

Funding information

Production of this summary, the online chapter and associated resources was funded by a grant from the Wellcome Trust (WT108418AIA).

Acknowledgements

Members of the ICTV Report Consortium are Stuart G. Siddell, Andrew J. Davison, Elliot J. Lefkowitz, Sead Sabanadzovic, Peter Simmonds,

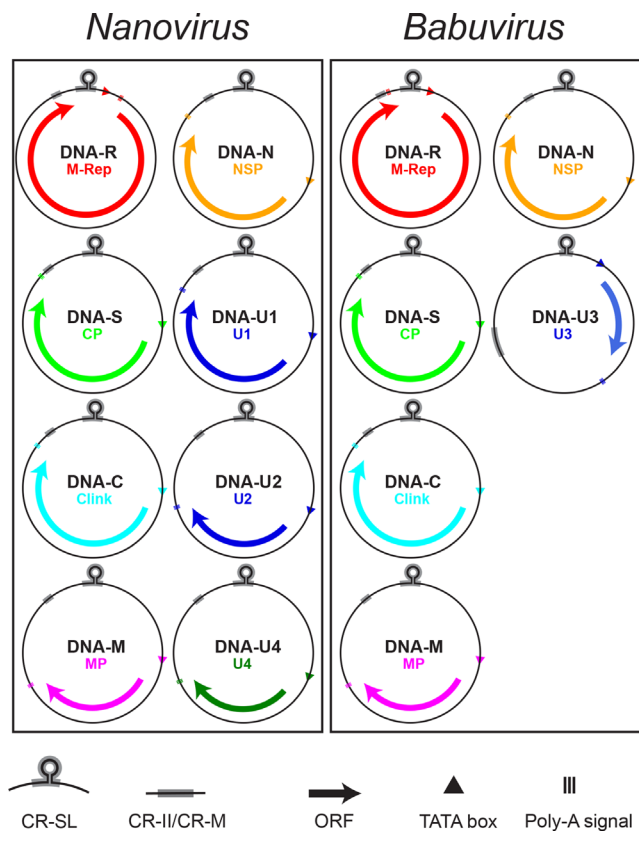


Fig. 2. Genomic organization of viruses of the family *Nanoviridae*. DNA circles (0.9–1.1 kb) are labelled with their designated name and that of the encoded protein, with ORFs indicated by arrows. The positions of the common stem-loop region (CR-SL) and the second common region (CR-II/CR-M) are indicated.

Donald B. Smith, Richard Orton and F. Murilo Zerbini. We thank Arvind Varsani for helpful comments on the manuscript.

Conflicts of interest

The authors declare that there are no conflicts of interest.

References

1. Grigoras I, Timchenko T, Katul L, Grande-Pérez A, Vetten H-J *et al*. Reconstitution of authentic nanovirus from multiple cloned DNAs. *J Virol* 2009;83:10778–10787.
2. Gronenborn B. Nanoviruses: genome organisation and protein function. *Vet Microbiol* 2004;98:103–109.
3. Briddon RW, Martin DP, Roumagnac P, Navas-Castillo J, Fiallo-Olivé E *et al*. *Alphasatellitidae*: a new family with two subfamilies for the classification of geminivirus- and nanovirus-associated alphasatellites. *Arch Virol* 2018;163:2587–2600.
4. Vetten HJ, Bressan A, Gronenborn B. Aphid transmission of viruses of the family *Nanoviridae*. In: Brown JK (editor). *Vector-mediated Transmission of Plant Pathogens*. St Paul, Minnesota, USA: American Phytopathological Society; 2016. pp. 453–462.
5. Thomas J. Banana bunchy top. In: Jones D (editor). *Handbook of Diseases of Banana, Abacá and Enset*. Wallingford, UK: CAB International; 2019. pp. 362–376.
6. Mandal B, Shilpi S, Barman AR, Mandal S, Varma A. Nine novel DNA components associated with the foorky disease of large cardamom: evidence of a distinct babuvirus species in *Nanoviridae*. *Virus Res* 2013;178:297–305.