



Prehaustorial local resistance to coffee leaf rust in a Mexican cultivar involves expression of salicylic acid-responsive genes

Edgar Couttolenc-Brenis^{1,7}, Gloria L. Carrión², Luc Villain³,
Fernando Ortega-Escalona⁴, Daniel Ramírez-Martínez⁵, Martín Mata-Rosas¹ and
Alfonso Méndez-Bravo⁶

¹ Red de Manejo Biotecnológico de Recursos, Instituto de Ecología, A.C., Xalapa, Veracruz, México

² Red de Biodiversidad y Sistemática de Hongos, Instituto de Ecología, A.C., Xalapa, Veracruz, México

³ La Recherche Agronomique pour le Développement, UMR, RPB, CIRAD, Montpellier, France

⁴ Red de Ecología Funcional, Instituto de Ecología, A.C., Xalapa, Veracruz, México

⁵ Escuela Nacional de Estudios Superiores Unidad Morelia, Universidad Nacional Autónoma de México, Morelia, Michoacán, México

⁶ CONACYT-Escuela Nacional de Estudios Superiores Unidad Morelia, Laboratorio Nacional de Análisis y Síntesis Ecológica, Universidad Nacional Autónoma de México, Morelia, Michoacán, México

⁷ Current affiliation: Instituto Nacional de Investigaciones Forestales Agrícolas y Pecuarias, C.E. Cotaxtla, Veracruz, México

ABSTRACT

Background. In Mexico, coffee leaf rust (CLR) is the main disease that affects the Arabica coffee crop. In this study, the local response of two Mexican cultivars of *Coffea arabica* (Oro Azteca and Garnica) in the early stages of *Hemileia vastatrix* infection was evaluated.

Methods. We quantified the development of fungal structures in locally-infected leaf disks from both cultivars, using qRT-PCR to measure the relative expression of two pathogenesis recognition genes (*CaNDR1* and *CaNBS-LRR*) and three genes associated with the salicylic acid (SA)-related pathway (*CaNPR1*, *CaPR1*, and *CaPR5*).

Results. Resistance of the cv. Oro Azteca was significantly higher than that of the cv. Garnica, with 8.2% and 53.3% haustorial detection, respectively. In addition, the *non-race specific disease resistance gene* (*CaNDR1*), a key gene for the pathogen recognition, as well as the genes associated with SA, *CaNPR1*, *CaPR1*, and *CaPR5*, presented an increased expression in response to infection by *H. vastatrix* in cv. Oro Azteca if comparing with cv. Garnica. Our results suggest that Oro Azteca's defense mechanisms could involve early recognition of CLR by NDR1 and the subsequent activation of the SA signaling pathway.

Subjects Agricultural Science, Molecular Biology, Mycology, Plant Science

Keywords *Coffea arabica*, Defense gene-expression, Leaf rust, Salicylic acid, SAR

INTRODUCTION

Coffee leaf rust (CLR) is one of the most destructive diseases of the Arabica crop worldwide. The causal agent is the biotrophic fungus *Hemileia vastatrix* Berk. et Br. (*Berkeley & Broome*,

Submitted 5 February 2019
Accepted 4 December 2019
Published 22 January 2020

Corresponding authors
Martín Mata-Rosas,
martin.mata@inecol.mx
Alfonso Méndez-Bravo,
amendezbravo@enesmorelia.unam.mx

Academic editor
Gerard Lazo

Additional Information and
Declarations can be found on
page 14

DOI 10.7717/peerj.8345

© Copyright
2020 Couttolenc-Brenis et al.

Distributed under
Creative Commons CC-BY 4.0

OPEN ACCESS

1869 in, [Diola et al., 2013](#); [Zambolim, 2016](#); [Talhinhas et al., 2017](#)), a pathogen specific to the *Coffea* genus ([Thirumalachar & Narasimhan, 1947](#)). In Mexico, about 50% of coffee plantations were affected by CLR during 2017 ([PEVEF-Cafeto, 2017](#)).

Although the production of rust-resistant varieties of *Coffea* has been promoted by generating hybrids, most of the hybrids have been derived from Híbrido de Timor (a spontaneous interspecific cross between *Coffea arabica* and *C. canephora*) (reviewed by [Talhinhas et al., 2017](#)). Furthermore, monogenic and oligogenic resistance, conferred by the system gene-for-gene ([Flor, 1971](#)), has been increasingly overcome by virulence factors of the pathogen ([Rodrigues Jr, Gonçalves & Várzea, 2004](#); [Cabral et al., 2009](#); [Fernandez et al., 2012](#); [Maia et al., 2013](#); [Zambolim, 2016](#)). CLR resistance is ruled by at least nine major dominant genes (*SH1-SH9*) that recognize pathogen virulence genes (*V1-V9*). Combinations of virulence genes define the physiological races of *H. vastatrix* ([Gichuru et al., 2012](#)). Fifty distinct races have been identified worldwide ([Várzea & Marques, 2005](#)). The promotion of tolerance to the infectious process, therefore, through multigenic co-regulated pathways at the early stages of the pathogenic interaction is a useful tool to induce the expression of defensive mechanisms against the disease.

The response of plants to the attack of a pathogen begins with the recognition of the pathogen. This recognition can occur extracellularly when pathogen-associated molecular patterns (PAMPs) are recognized by pattern recognition receptors (PRRs), activating the pathogen-triggered immunity (PTI) mechanism ([Jones & Dangl, 2006](#); [Dodds & Rathjen, 2010](#)). A second mode of immunity is based on the identification of molecules of adapted pathogens (effectors) at the intercellular level. These activate the effector-triggered immunity (ETI) mechanism. Although both defense mechanisms generate common responses, including an oxidative burst, hormonal changes, and transcriptional reprogramming ([Dodds & Rathjen, 2010](#)), the activated immune responses of ETI are more prolonged and robust than those of PTI ([Katagiri & Tsuda, 2010](#)). PTI is effective against non-adapted pathogens (non-host resistance), ETI against adapted pathogens ([Katagiri & Tsuda, 2010](#)). Among the recognition genes that have been identified in coffee, *NDR1* is related to the early activation of both defense mechanisms ([Knepper, Savory & Day, 2011b](#)). Its function in PTI has been described as indispensable for the activation of the mitogen-activated protein kinase (MAPK) signaling pathway ([Knepper, Savory & Day, 2011b](#)). MAPK signaling during ETI is related to the activation of some of the genes that encode the coiled-coil–nucleotide-binding site–leucine-rich repeat (CC-NB-LRR) protein family ([Dodds & Rathjen, 2010](#); [Knepper & Day, 2010](#)). Both PTI and ETI activate plant defensive responses related to the salicylic acid (SA) and jasmonic acid (JA)/ ethylene (ET) signaling pathways. The SA signaling pathway is the most important in the immune response to biotrophic pathogens such as *H. vastatrix*.

The coffee-*H. vastatrix* interaction initiates with the adhesion of urediniospores to the abaxial side of the leaves. Once established, the spores germinate and the appressoria are formed. Afterward, the fungus penetrates through the stomata, forming a penetration hypha. The stomata chambers are invaded by haustoria and intracellular mycelium, beginning the colonization of the mesophyll cells ([Coutinho, Rijkenberg & Van Asch, 1993](#); [Zambolim, 2016](#); [Talhinhas et al., 2017](#)). During these first infection stages, recognition

of the fungus by the plant induces defense mechanisms that lead resistant plants to have an incompatible interaction through hypersensitive response (HR) at the appressorial or pre-haustorial stage (Diola *et al.*, 2013; Florez *et al.*, 2017). The HR is mostly regulated by the salicylic acid-responsive (SA) signaling pathway and is associated with the local production of oxygen reactive and phenolic compounds, callose deposition, and cell wall lignification (Silva *et al.*, 2002; Florez *et al.*, 2017).

The expression level of genes involved in resistance responses against CLR has been characterized in several incompatible interactions at early stages. Among them are: the recognition encoding genes *CaRLK*, *CaR111*, *CaNBS-LRR*, and *CaNDR1* (Naruzaka *et al.*, 2013a; Naruzaka *et al.*, 2013b; Selote *et al.*, 2013; Bao *et al.*, 2016); the SA-associated genes *CaNPR1*, *CaPR1*, *CaPR5* (Kim & Hwang, 2014; Diniz *et al.*, 2017; Jain & Khurana, 2018); the transcriptional regulators type-AP2 and WRKY families (Fernandez *et al.*, 2004; Fernandez *et al.*, 2012; Ganesh *et al.*, 2006; Ramiro *et al.*, 2010); the genes encoding oxidative enzymes (lipoxygenases, peroxidases, and superoxide dismutase); phenylalanine ammonia lyase, chalcone synthase, chitinases and glucanases (Fernandez *et al.*, 2004; Fernandez *et al.*, 2012; Ganesh *et al.*, 2006; Diniz *et al.*, 2012; Ahuja, Kissen & Bones, 2012; Shanshan *et al.*, 2017; Yahyaa *et al.*, 2017; Jaggi, 2018; Florez *et al.*, 2017); and several genes associated with the production of flavonoids (*CaPAL* and *CaCHS*) and signaling protein kinases (*CaMAPK2*, *CaMEK* and *CaCDPK*) (Ahuja, Kissen & Bones, 2012; Shanshan *et al.*, 2017; Yahyaa *et al.*, 2017; Jaggi, 2018). These genetic backgrounds constitute an important stock of marker genes to distinguish between resistant and susceptible cultivars. The expression profiles of these genes allow us to understand the defense mechanisms involved in resistance to CLR.

As a result of the increasing damage caused by CLR in Mexico, the growing of resistant cultivars has been promoted. Among these cultivars, Oro Azteca has been the most planted in Mexican fields (Juárez-Bravo *et al.*, 2018). This variety is a “Catimor”, which has been defined as a group of introgressed Arabica varieties originated from the cross of Híbrido de Timor CIFC 832/1 with cv. Caturra CIFC 19/1 (Montagnon, Marraccini & Bertrand, 2012; World Coffee Research, 2018; Luna *et al.*, 2019) and developed by the National Institute of Forestry and Agriculture Research (INIFAP). Information about the response of this variety to CLR infection, however, is scarce.

Therefore, the main objectives of our study were to evaluate the local response of two Mexican cultivars of *C. arabica* at early stages of infection (germination, appressoria and haustoria formation) by *H. vastatrix* under controlled conditions in order to quantify the expression levels of some defense-related genes as well as to describe the possible mechanism involved in the resistance reaction against CLR. The selected cultivars were the Catimor Oro Azteca and cv. Garnica, developed by the Mexican Coffee Institute (IMECAFE) from the cross of cv. Caturra Amarillo with cv. Mundo Novo (Rivera & Villareal, 2015).

MATERIALS & METHODS

Plant material and fungal inoculation

To evaluate the local response of cv. Oro Azteca to *H. vastatrix* infection, we established an experiment with inoculated and uninoculated leaf disks. Cv. Oro Azteca and the

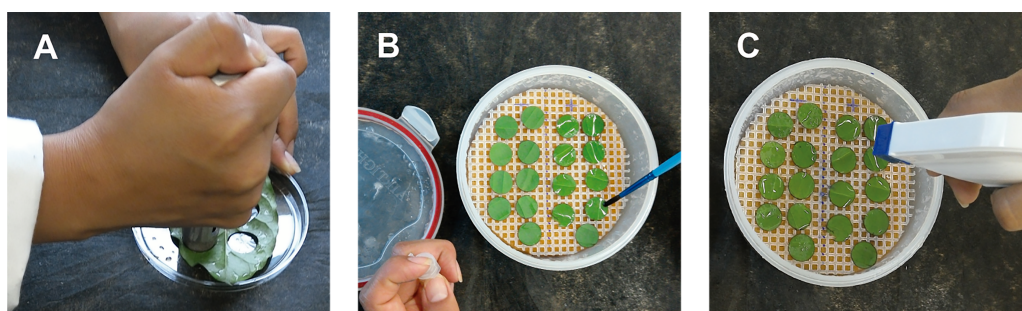


Figure 1 Scheme showing the preparation of coffee leaf disks and the inoculation of *Hemileia vastatrix* uredospores. (A) Cutting of leaf disks with a cork borer; (B) uredospore spreading over the abaxial surface of the disks with a camel hairbrush, and (C) spraying the control (non-inoculated) or inoculated leaf disks with distilled water to keep a high relative humidity.

Full-size  DOI: 10.7717/peerj.8345/fig-1

CLR-susceptible cv. Garnica plants were grown under greenhouse conditions. We selected ten plants from each cultivar with at least four pairs of leaves. One leaf from each plant was collected from the second pair of leaves. From each selected leaf, we cut 12 disks with a 1.8 cm diameter cork borer. In total 120 leaf disks from each cultivar were employed for the analyses. The disks were placed in airtight plastic containers over a moistened foam and plastic mesh. We obtained the uredospores of *H. vastatrix* by collecting leaves from infested coffee plantations at the monitoring area of the phytosanitary epidemiological vigilance program of the National Department of Agriculture (SEDAR) in Huatusco, Veracruz, Mexico. We isolated the uredospores from the leaves in the laboratory with a stereoscope and placed them in 2 ml microcentrifuge tubes. Each tube was filled with a solution of 0.01% Tween® 80 to obtain a final concentration of 1.5×10^5 uredospores ml^{-1} . We inoculated leaf disks with a camel hair brush to spread the uredospores over the abaxial surface as previously reported by Cabral *et al.* (2009). The containers were incubated in the dark for 48 h, at 24 ± 1 °C and a high relative humidity to allow the uredospore germination. The leaf disks were then incubated in normal laboratory light conditions (Fig. 1).

Evaluation of fungal growth

To characterize the response of cv. Oro Azteca and cv. Garnica to CLR, we determined the number of fungal structures (percent of uredospore germination and the formation of appressoria and haustoria) in vegetal tissue from inoculated leaf disks. To ensure that we were able to evaluate the response of cultivars once the complete local infective process has been completed, the record of developed fungal structures was performed at 24 and 120 hai following the method described by Silva, Rijo & Rodrigues Jr (1985). The leaf disks were covered with transparent nail polish on the lower surface and 24 h later the nail polish was removed with tweezers to obtain a leaf print. Three leaf prints per cultivar were stained and mounted with blue lactophenol. The leaf prints were observed at a $100\times$ magnification with a Nikon Eclipse E600 light microscope; we scored total uredospores, germinated uredospores, and appressoria. To evaluate the formation of haustoria, we

fixed leaf disk (samples) with FAA (10% formaldehyde, 50% ethanol, 5% acetic acid and 35% distilled water) for 24 h. Samples were dehydrated using a graded series of terbutylic alcohol and infiltrated with paraffin at 60 °C (Pratt & Wetmore, 1951; Li et al., 2007; Huang & Yeung, 2015; Stasolla & Yeung, 2015). We fixed leaf disks (samples) with a microtome Leica Biosystems RM 2125 RTS and mounted them on slides; deparaffined using Xylene, decolorated with 70% ethanol warmed to 70 °C and lactophenol, and finally stained with blue lactophenol and mounted in polyvinyl alcohol (PVA). We examined cross sections under the Nikon Eclipse E600 light microscope at a 40x magnification to determine the percentage of haustoria formed per infection point. We observed 150 infection points. The data of germination, appressoria, and haustoria were statistically contrasted with a T-Student test by Infostat® software.

Additionally, the uredospore morphology was analyzed by scanning electron microscopy (SEM) in a JEOL JSM-IT300 microscope. At 24 hai, the leaf disks were fixed in a 4% glutaraldehyde solution for 24 h and washed with phosphate buffer (pH = 7.2). Samples were then dehydrated in a gradient of ethanol (70%, 80%, 90% and absolute ethanol) and subsequently dried with liquid CO₂ for 15 min in a Toussimis Autosamdri®-815, Series A, incorporated to aluminum stubs and sputter coated with 10-nm gold layer using Denton Desk V sputter coater. The scanning was performed with an accelerating voltage of 20 kV.

Selection of defense-related genes

To study the initial response of Oro Azteca to CLR infection, we evaluated the relative expression of the non-race pathogen recognition gene *CaNDR1b* (Fernandez et al., 2004; Ganesh et al., 2006; Cacas et al., 2011) and the leucine-reach domain recognition gene *CaNBS-LRR* (Diola et al., 2013; Florez et al., 2017). In addition to these recognition genes, we analyzed the *CaNPR1*, *CaPR1*, and *CaPR5* genes associated with the Salicylic Acid (SA) pathway. The housekeeping gene *CaUbiE2* was used as the internal control (Ganesh et al., 2006; Cruz et al., 2009; Ramiro et al., 2009; Diniz et al., 2012; Borges, Tsai & Caldas, 2012; Diola et al., 2013). To evaluate the growth of CLR in leaf disk tissues, we compared the relative expression of the *H. vastatrix Hv40-Rib* (Vieira et al., 2011) gene with respect to the constitutive gene *CaUbiE2*, as it has been performed with other pathogen models (Eshraghi et al., 2011). We designed the specific oligonucleotides with software Primer3Plus® (Untergasser et al., 2007), (Table 1) by using the National Center for Biotechnology (NCBI) database. Primers were synthesized by the T4Oligo Lab in Irapuato, Mexico.

RNA extraction

To perform the extraction of RNA, we took 10 inoculated and 10 non-inoculated leaf disks from each cultivar at 0, 24 and 72 hai. The disks were macerated in liquid nitrogen to perform the RNA extraction with the RNeasy kit (Quiagen), according to the manufacturer's instructions.

qRT-PCR: Synthesis of cDNA

The first strand of the cDNA was synthesized from 30 µg of total RNA. Each reaction mixture contained: 1.0 µg/ml total RNA, first chain solution 10 × 25 mM MgCl₂, 10 mM dNTPs, 40 units/ml RNasin Inh, 0.5 mg/ml oligo (dT) and 25 units/ml SuperScript III

Table 1 Designed primers for the amplification of *CaPR1*, *CaPR5*, *CaNBS-LRR*, *CaNDR1b*, *CaNPRI*, *CaUbiE2* and *Hv40s-Rib* genes used in the expression analyses by qRT-PCR.

Gen	Primer	Amplification efficiency
<i>CaPR1</i>	F5'-CAGGAATGCGGGCATTATAC-3' R5'-CAATCGCATGGGTTTGATAA-3'	0.9729
<i>CaPR5</i>	F5'-CTGCCTGAGTTGCAGCAATA-3' R5'-TTTCCCTTGTTGATGGCTTC-3'	0.9420
<i>CaNBS-LRR</i>	F5'-CCAAAAACTTTGGGTTGGTG-3' R5'-TCCATTGCATTCTCATCTG-3'	0.8887
<i>CaNDR1b</i>	F5'-CTTACAGGGCGGTGTCAAAT-3' R5'-TACCACTAGCCCAGGACAGC-3'	0.9357
<i>CaNPRI</i>	F5'-GACGCTGCAGTGAAGAAAC-3' R5'-TGATAGCTTCCCAGGCATCT-3'	0.8913
<i>CaUbiE2</i>	F5'-CCATTTAAACCCCAAAGGT-3' R5'-GGTCCAGCTTCGAGCAGTAG-3'	1.0394
<i>Hv40s-Rib</i>	F5'-ATGCTAGCACCGCTCTTGAT-3' R5'-ATCGAGCTTCACTTGCTGGT-3'	–

reverse transcriptase (Invitrogen®). The amplification conditions were 10 min at 70 °C followed by two hours at 42 °C for the synthesis of the second chain.

qRT-PCR

Each reaction was performed with 3 µl cDNA, 1 × of reaction mixture (20 µl) “SYBR Green PCR Master Mix (Applied Biosystems)” and 5 pmol of each primer. Amplification conditions were: 94 °C for 10 min, 40 cycles at 94 °C for 30 s, 60 °C for 30 s and 72 °C for 40 s. The qRT-PCR amplifications were performed with a thermal cycler 7500 Fast Real-Time PCR System (Applied Biosystems) (Cruz *et al.*, 2009; Ramiro *et al.*, 2009; Borges, Tsai & Caldas, 2012). Four independent replicates were obtained with a standard error less than 0.1 for each sample. Each expression value is the average of these replicas. Calculations were performed with the 7500 Software v2.0.1 (Applied Biosystems). The amplification efficiency for each set of oligonucleotides was determined by performing dilution series (1: 5). The specificity of amplification was calculated by means of dissociation curves, obtaining the fluorescence values $\Delta\Delta$ between 65 °C and 95 °C. On average, the amplification curves were quantified at cycle 15 of each sample.

Relative quantification of gene expression

The results of qRT-PCR are based on the detection and quantification of fluorescent markers (Cy3 and Cy5) throughout the PCR reaction (Walker, 2002). Then, it is necessary to determine the threshold value of the cycle (Ct), identifying the amplification cycle in which the intensity of the emission of the fluorescent marker rises exponentially during the amplification reaction. The relative quantification calculations were obtained by adjusting for differences in PCR efficiency between the defense-related genes and the average values and efficiency of the *CaUbiE2* gene as the internal reference, according to the model

proposed by Pfaffl (2001) and discussed in Hellemans et al. (2007):

$$QR = \frac{E_{Target}^{\Delta Ct(control-inoculated)}}{E_{ref}^{\Delta Ct(control-inoculated)}}$$

To determine if there were differences between the cultivars, an analysis of the variance and the Tukey test were made with the Infostat® program.

RESULTS

Evaluation of fungal growth

The percentage of spore germination was similar ($p = 0.5091$) in both varieties, 52.00% in Garnica tissue and 48.80% in Oro Azteca at 24 hai, as was the appressoria number ($p = 0.2977$) (Table 2). The same trend was observed at 120 hai, with 40.14% uredospore germination in Garnica and 37.91% in Oro Azteca leaf disks ($p = 0.6645$), neither the percentage of appressorial detection was statistically different ($p = 0.2332$). In contrast, the percentage of infection points with haustoria was significantly different ($p < 0.0001$). Out of the 150 infection points observed for each cultivar, Garnica presented haustoria in 53.33%, Oro Azteca in 8.22% (Table 2; Fig. 2).

To corroborate the resistance response in Oro Azteca leaf disks, and to correlate molecular data with fungal colonization, we quantified the expression of the *H. vastatrix Hv40s-Rib* gene relative to the *C. arabica CaUbiE2* gene at 24 and 72 hai. Results indicated a higher proliferation of fungal tissues in Garnica leaf disks than in those of Oro Azteca. The expression level of the endogenous *H. vastatrix Hv40s-Rib* gene was eight-fold and four-fold higher in cv. Garnica as compared with cv. Oro Azteca, at 24 and 72 hai, respectively (Fig. 3).

Expression of plant pathogen-recognition genes

We evaluated the relative expression of the non-race pathogen recognition gene *CaNDR1b* and the leucine-reach domain recognition gene *CaNBS-LRR*. The *CaNDR1b* gene was differentially expressed at 24 hai ($p < 0.0001$, 7 df) and at 72 hai ($p < 0.0001$, 7 df) between cultivars Oro Azteca and Garnica. In both cultivars, the relative expression values were higher with respect to the control (non-inoculated leaf disks) up to 72 hai, and higher in Oro Azteca than in cv. Garnica (Fig. 4A). In the case of *CaNBS-LRR*, the values of relative expression were significant between cultivars ($p < 0.0001$, 7 df) at 24 hai and $p < 0.0002$, 7df at 72 hai; cv. Garnica had higher expression with respect to both the control and to cv. Oro Azteca at 72 hai (Fig. 4B).

Expression of salicylic acid-associated genes

Once we determined that the early recognition gene *CaNDR1b* was more highly expressed in cv. Oro Azteca leaf disks than in those of cv. Garnica at 72 hai, we analyzed the expression of some salicylic acid (SA) related genes. The transcriptional regulator of the SA-responsive gene *CaNPR1* was differentially expressed between cultivars (<0.0001 , 7 d.f. at 24 and 72 hai), showing an expression up to 20-fold greater in cv. Oro Azteca as compared to the control and cv. Garnica leaf disks (Fig. 5A).

Table 2 Percentage of uredospores germination, appressoria and haustoria detection at 24 and 120 hours after *H. vastatrix* inoculation on leaf disks of *C. arabica* cv. Garnica and cv. Oro Azteca.

Observed structure	cv. Garnica (%)		cv. Oro Azteca (%)		n per cultivar		Degrees of freedom (df)		p-value	
	24 hai	120 hai	24 hai	120 hai	24 hai	120 hai	24 hai	120 hai	24 hai	120 hai
Uredospores	52.00 ± 3.58	40.14 ± 2.44	48.80 ± 2.94	37.91 ± 4.10	125	56	8	4	0.5091	0.6645
Appressoria	51.29 ± 5.62	51.85 ± 1.85	43.70 ± 3.85	47.61 ± 2.38	125	56	8	4	0.2977	0.2332
Haustoria ^a	n.a.	53.33 ± 3.11a	n.a.	8.22 ± 1.48b	n.a.	150	n.a.	213	n.a.	<0.0001

Notes.

^aDifferent letters indicate significant differences with a *t*-Student test ($p < 0.05$) Percentages represent average values ± standard error.

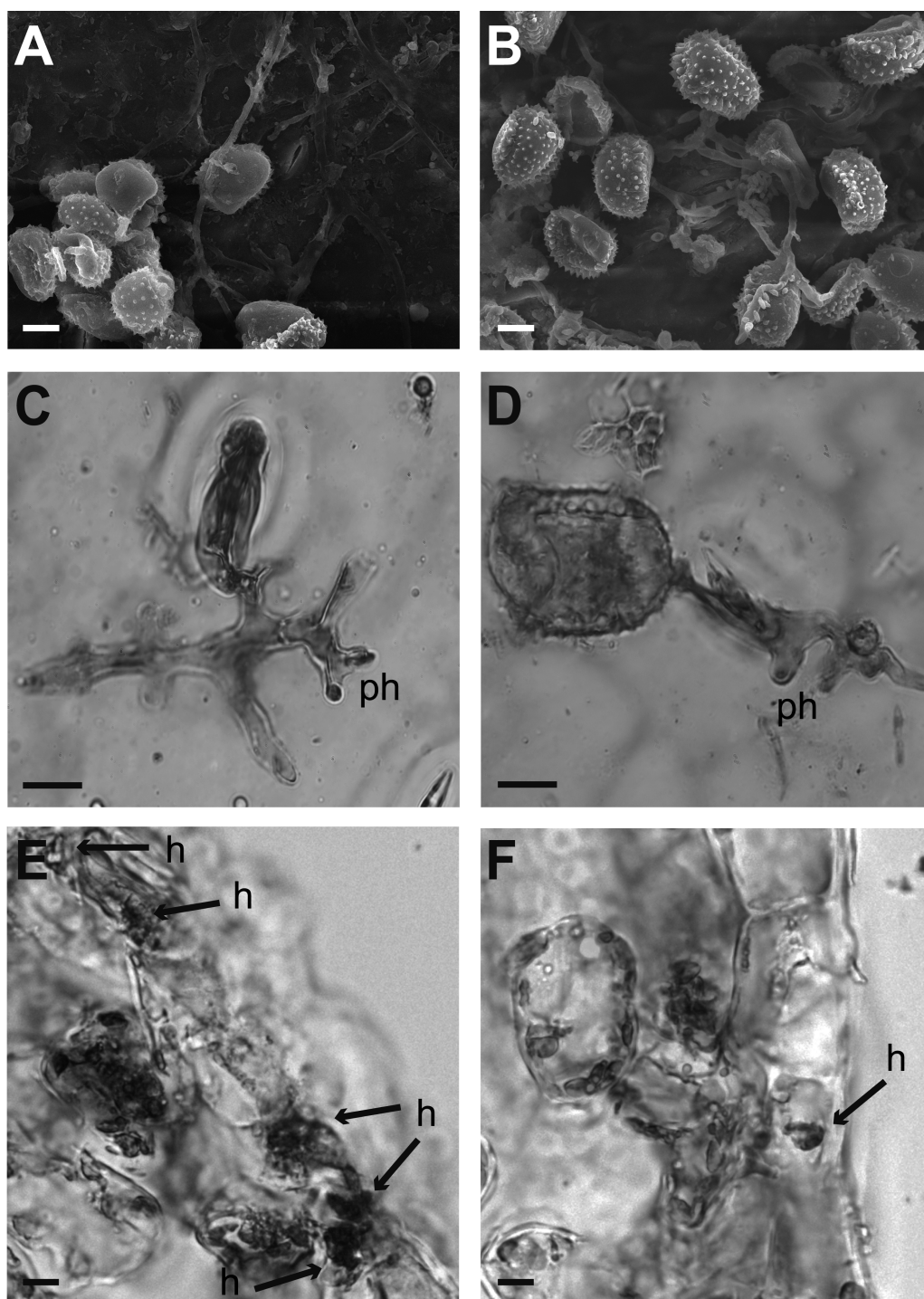


Figure 2 Cytological analysis of inoculated leaf disks. Samples were prepared for their analysis at 24 and 120 hours after inoculation. (A–B) Garnica and Oro Azteca leaf disks surfaces analyzed by Scanning Electron Microscopy. Several uredosporia are shown forming the appressorium around a stoma at 24 hai. (C–F) Optical microscope analyses of leaf disks stained with lactophenol blue. (C) Representative stained print of cv. Garnica leaf disk, view of an appressorium on the stoma and a penetration hypha (ph); the remains of the spore were detached from the leaf; (continued on next page...)

Full-size DOI: 10.7717/peerj.8345/fig-2

Figure 2 (...continued)

(D) print of a representative preparation of leaf disks cv. Oro Azteca; view of one germinated spore of *H. vastatrix*, the appressorium on the stoma and penetration hypha (ph). (E) Presence of fungal tissue in inoculated Garnica leaf disk by analyzing cross sections. Arrows indicate invaded guard cells and haustoria (h). (F) Cross section of one inoculated Oro Azteca leaf disk; arrow points out the haustorium (h). The scale bar means 10 μ m.

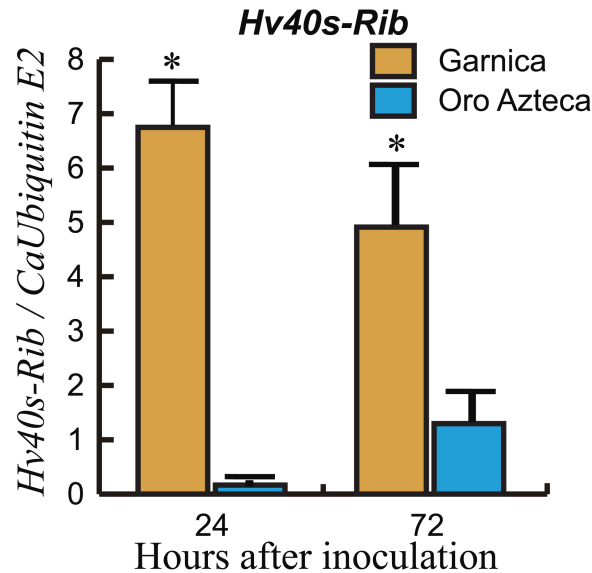


Figure 3 Growth of *H. vastatrix* on inoculated leaf disks. Data show the qPCR amplification of *Hv40s-Rib* expression relative to *CaUbiE2* at 24 and 72 hours after inoculation (hai). The ANOVA analysis showed significant differences both at 24 hai ($p < 0.0002$, 7 d.f.) and 72 hai ($p < 0.0287$, 7 d.f.). Asterisks indicate differences between the average values of the relative expression (Tukey test, $p < 0.05$).

Full-size [DOI: 10.7717/peerj.8345/fig-3](https://doi.org/10.7717/peerj.8345/fig-3)

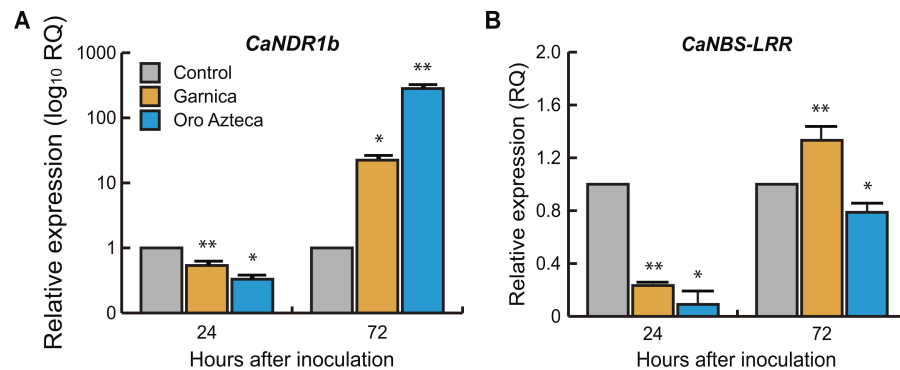


Figure 4 Relative expression of pathogen recognition genes. (A) *CaNDR1b* and (B) *CaNBS-LRR* in Garnica and Oro Azteca infected leaf disks at 24 and 72 hours after inoculation (hai); according to Tukey test ($p < 0.05$), one asterisk indicates differences between the control and the inoculated leaf disk of both cultivars, two asterisks indicate differences with control and between cultivars.

Full-size [DOI: 10.7717/peerj.8345/fig-4](https://doi.org/10.7717/peerj.8345/fig-4)

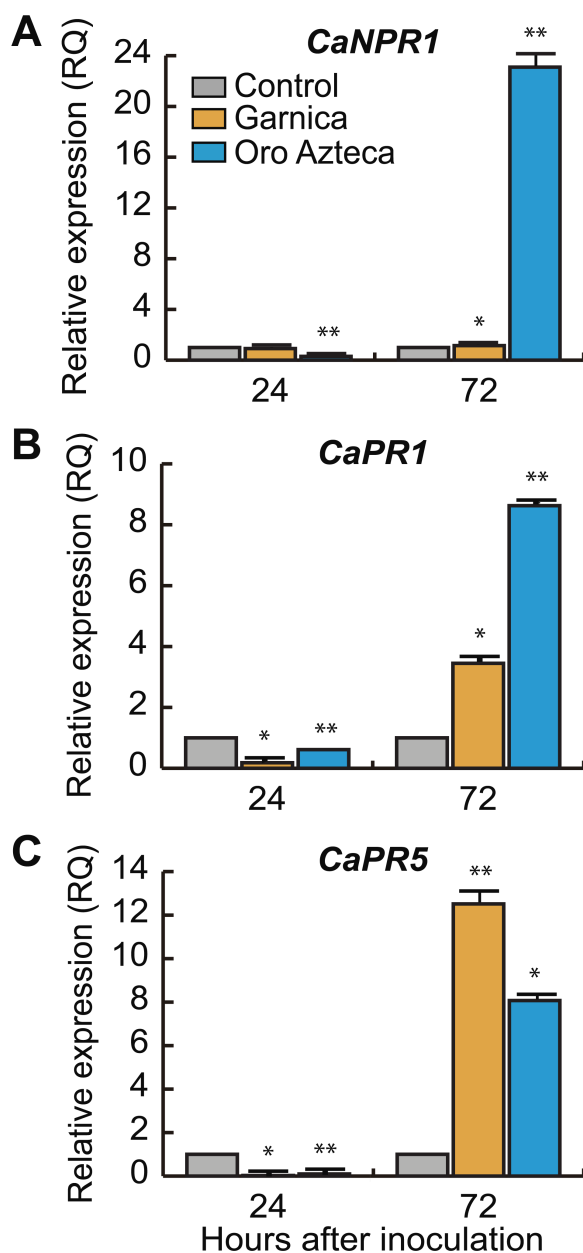


Figure 5 Relative expression of defense and salicylic acid-responsive genes. (A) *CaNPR1*, (B) *CaPR1* and (C) *CaPR5* relative expression at 24 and 72 hours after inoculation (hai). According to Tukey test ($p < 0.05$), one single asterisk indicates difference between the control and the inoculate disk of both cultivars, two asterisks mean differences with control and between cultivars.

Full-size [DOI: 10.7717/peerj.8345/fig-5](https://doi.org/10.7717/peerj.8345/fig-5)

The SA-regulated gene *CaPR1* was about two-fold more highly expressed in Oro Azteca than in the Garnica infected leaf disks (Fig. 5B). Despite the thaumatin-like gene, *CaPR5* showed a greater expression level in the leaf disks from both cultivars than control, it was more highly expressed in the Garnica than in the Oro Azteca leaf disks at 72 hai (Fig. 5C).

DISCUSSION

Incompatibility interaction between Oro Azteca and coffee leaf rust

Comparison of the proliferation of fungal structures in the infected leaf disks from Oro Azteca and Garnica varieties showed that despite similar percentages of spore germination and appressoria formation, the development of haustorial structures was significantly higher ($p = 0.0001$) in Garnica than in Oro Azteca leaf disks (Table 2 and Fig. 2); indicating that local responses of Oro Azteca leaves arrest fungal colonization before the haustorial stage. These results were corroborated by measuring the relation of gene abundance between the endogenous *H. vastatrix Hv40s-Rib* gene and *C. arabica CaUbiE2* (Fig. 3); this kind of evaluation on the host colonization has been described for some other pathogen models (Eshraghi et al., 2011).

Our results are consistent with those obtained by Martins & Moraes (1996), who evaluated the development of *H. vastatrix* race II on Mundo Novo, a susceptible cultivar, and Sarchimor, a resistant cultivar. Although the authors did not observe significant differences of spore germination and appressoria formation percentages between these two cultivars, they registered a haustorial development five-fold higher in cv. Mundo Novo as compared to the cv. Sarchimor segregants. Similarly, Ganesh et al. (2006) found that there was no haustorial formation during an incompatible interaction, considering this infection arrest as an indicator of resistance against races of *H. vastatrix*. The cytochemical characterization of the compatible interaction between cv. Caturra and *H. vastatrix* race III, performed by Silva et al. (1999), showed a similar proliferation of haustorial structures (64%) to that of the cv. Garnica leaf disks in this study at 120 hai (Table 2). Our results, consistent with previous studies, showed that defense mechanisms were activated before the formation of haustoria in the Mexican variety Oro Azteca. This arrest in the proliferation of *H. vastatrix* is correlated to the activation of genes related to the plant defense responses.

Expression of the plant pathogen-recognition genes *CaNDR1* and *CaNBS-LRR*

We evaluated the expression of the previously reported non-race pathogen recognition gene *CaNDR1b* (Fernandez et al., 2004; Ganesh et al., 2006; Cacas et al., 2011). *CaNDR1b* has been identified within a group of genes that participate in the mechanisms of resistance to CLR (Fernandez et al., 2004; Cacas et al., 2011) at 24 hai. Several *NDR1* homologs have been identified in other plant species during incompatible plant-pathogen interactions (Century et al., 1997; Knepper, Savory & Day, 2011a; Lu et al., 2013; McNeece et al., 2017). *CaNDR1b* is a key gene in the activation of mechanisms of plant defense in response to pathogen-associated molecular patterns (PAMPs), to the pathogen-triggered immunity (PTI), and to the effector-triggered immunity (ETI) (Knepper, Savory & Day, 2011b). In the present study, *CaNDR1b* did not show overexpression at 24 hai. At 72 hai, however, its relative expression was at least 10-fold higher in Oro Azteca than in Garnica infected leaf disks (Fig. 4A), suggesting that *CaNDR1* could be involved in the recognition and defense responses to CLR in Oro Azteca cv. It would be interesting to determine in future studies its expression pattern between 24 and 72 hai, in order to compare the expression kinetics in Oro Azteca and Garnica cultivars.

Otherwise, the gene encoding the transmembrane protein pattern recognition receptor (PRR), *CaNBS-LRR*, showed an expression level below the control and susceptible Garnica in the cultivar Oro Azteca. This difference in expression was statistically significant at 24 and 72 hai (Fig. 4B). Members of this superfamily of receptor-like protein kinases are involved in the early recognition of ETI-activating pathogens, activating when pathogens deliver effectors that interfere with PTI and the pathogen infects the cells adjacent to the stomatal chamber (Jones & Dangl, 2006; Dodds & Rathjen, 2010; Knepper, Savory & Day, 2011b). This difference in the expression of this gene in Oro Azteca and Garnica is consistent with what we observed in fungal growth. Another reason for the difference could be that NBS-LRR proteins can be encoded by hundreds of genes in different plant species (McHale et al., 2006). Additionally, some other members of this gene family could be involved in the activation of this variety of Oro Azteca's ETI, as opposed to only this specific gene whose expression we studied. Another hypothesis is that *CaNBS-LRR* expression induction could happen later than 72 hai, as previously reported by Florez et al. (2017).

Expression of salicylic acid-associated genes

CaNPR1 is identified as an expression regulator of pathogenesis-related proteins (PR) encoding genes and also as a response initiator associated with acquired systemic resistance (SAR) (Glazebrook, 2005; Barsalobres-Cavallari et al., 2013). Orthologs of this gene have shown the same function in other plant species, e.g., *Arabidopsis thaliana* (Shah, Tsui & Klessig, 1997), *Vitis vinifera* (Le Henanff et al., 2009); *Glycine max* (Sandhu et al., 2009) and *Gladiolus hybridus* (Zhong et al., 2015). In coffee, lower expression levels of *CaNPR1* have been reported in susceptible varieties (Barsalobres-Cavallari et al., 2013), with similar expression levels to those that we observed in the Garnica infected leaf disks, in contrast with the 20-fold induction in Oro Azteca (Fig. 5A). These results strongly suggest that resistance to CLR in Oro Azteca may be driven by the activation of the SAR mechanisms.

The behavior of the salicylic acid (SA)-induced gene *CaPR1* (Fig. 5B) was comparable to that which was reported by Ramiro et al. (2009), Diniz et al. (2012) and Florez et al. (2017); exhibiting a higher expression level in the resistant material than in the susceptible one. The protein family for which *CaPR1* encodes is related to fungal attacks (Jain & Khurana, 2018) and is used as a marker of a defensive state induced by SAR (van Loon, Rep & Pieterse, 2006). Hoegen et al. (2002) found that in potatoes infected with *Phytophthora infestans*, the highest concentration of *CaPR1* was in epidermal cells, stoma guard cells, glandular trichomes, and cells from the vascular system of the infected leaves. The lower number of *H. vastatrix* haustorial structures observed in cv. Oro Azteca in comparison to those observed in cv. Garnica could be related, at least partially, to this overexpression of gene *CaPR1*.

Finally, we evaluated the expression of the pathogen-induced gene *CaPR5* that encodes a thaumatin protein (Jain & Khurana, 2018). *CaPR5* showed an increased relative expression in both cultivars, Garnica and Oro Azteca, as compared with the control, but a higher induction in the cv. Garnica infected leaf disks (Fig. 4C). Studies performed in wheat varieties have shown higher expression levels in susceptible plants than in resistant materials at 24 and 72 hai with *Puccinia triticina* (Wang et al., 2010). The broad spectrum

of stress-related signals that induce the expression of *CaPR5* in different plant models can explain these expression patterns (Wang *et al.*, 2010).

CONCLUSIONS

Altogether, our results suggest that defense mechanisms in Oro Azteca began with the early recognition of CLR by *CaNDRI*, activating the PTI. *CaNPRI*'s expression level could indicate the induction of SAR (Niu *et al.*, 2016) through the SA signaling pathway. However, the way in which PTI and *CaNPRI* are correlated is not yet clear; whether the activation of the SA responsive genes in response to CLR in Oro Azteca could involve an HR should be explored in future studies.

ACKNOWLEDGEMENTS

We thank Dr. Guillermo Ángeles (INECOL) for permission to use the light microscope and Dr. Orlando Hernández-Cristóbal (ENES, UNAM Morelia) for technical support with SEM. We also are thankful for the support of Mónica Ramírez-Vázquez and Lorena María Luisa López Sánchez in microscopic analyses at INECOL facilities. Finally, we thank Centro Internacional de Capacitación en Cafecultura y Desarrollo Sustentable, A.C. (CICADES) for kindly providing us with plant material.

ADDITIONAL INFORMATION AND DECLARATIONS

Funding

Alfonso Méndez Bravo was supported by Consejo Nacional de Ciencia y Tecnología (CONACYT, Mexico) grant numbers CB-2014, 242999 and LN-2017, 280505. Martín Mata-Rosas was supported by CONACYT (CB-2014, 242999) and institutional funding (INECOL). Edgar Couttolenc-Brenis was supported by CONACYT, with the doctoral scholarship 311030. There was no additional external funding received for this study. The funders had no role in study design, data collection and analysis, decision to publish, or preparation of the manuscript.

Grant Disclosures

The following grant information was disclosed by the authors:

Consejo Nacional de Ciencia y Tecnología (CONACYT, Mexico): CB-2014, 242999, LN-2017, 280505.

CONACYT: CB-2014, 242999.

Institutional funding (INECOL).

Competing Interests

The authors declare there are no competing interests.

Author Contributions

- Edgar Couttolenc-Brenis and Alfonso Méndez-Bravo conceived and designed the experiments, performed the experiments, analyzed the data, prepared figures and/or tables, authored or reviewed drafts of the paper, and approved the final draft.

- Gloria L. Carrión and Luc Villain analyzed the data, authored or reviewed drafts of the paper, and approved the final draft.
- Fernando Ortega-Escalona and Daniel Ramírez-Martínez performed the experiments, prepared figures and/or tables, and approved the final draft.
- Martín Mata-Rosas conceived and designed the experiments, analyzed the data, authored or reviewed drafts of the paper, and approved the final draft.

Data Availability

The following information was supplied regarding data availability:

Raw data are available as [Supplemental Files](#).

Supplemental Information

Supplemental information for this article can be found online at <http://dx.doi.org/10.7717/peerj.8345#supplemental-information>.

REFERENCES

- Ahuja I, Kissen R, Bones AM. 2012.** Phytoalexins in defense against pathogens. *Trends in Plant Science* 17(2):73–90 DOI 10.1016/j.tplants.2011.11.002.
- Bao Y, Song W-M, Pan J, Jiang C-M, Srivastava R, Li B, Zhang H-X. 2016.** Overexpression of the NDR1/HIN1-Like gene NHL6 modifies seed germination in response to abscisic acid and abiotic stresses in *Arabidopsis*. *PLOS ONE* 11(2):e0148572 DOI 10.1371/journal.pone.0148572.
- Barsalobres-Cavallari C, Petitot A, Severino F, Maia I, Fernandez D. 2013.** Host response profiling to fungal infection: molecular cloning, characterization and expression analysis of NPR1 gene from coffee (*Coffea arabica*). In: Mendez-Vilas A, ed. *Microbial pathogens and strategies for combating them: science, technology and education*. 4. Badajoz: Formatex Research Center, 411–418(Microbiology, 4).
- Berkeley MJ, Broome CE. 1869.** *Hemileia vastatrix*. *The Gardeners' Chronicle and Agricultural Gazette* 6:1157.
- Borges A, Tsai SM, Caldas DGG. 2012.** Validation of reference genes for RT-qPCR normalization in common bean during biotic and abiotic stresses. *Plant Cell Reports* 31(5):827–838 DOI 10.1007/s00299-011-1204-x.
- Cabral P, Zambolim E, Zambolim L, Lelis T, Capucho A, Caixeta E. 2009.** Identification of a new race of *Hemileia vastatrix* in Brazil. *Australasian Plant Disease Notes* 4(1):129–130 DOI 10.1071/DN09052.
- Cacas J-L, Petitot A-S, Bernier L, Estevan J, Conejero G, Mongrand S, Fernandez D. 2011.** Identification and characterization of the Non-race specific Disease Resistance 1 (*NDR1*) orthologous protein in coffee. *BMC Plant Biology* 11(1):144 DOI 10.1186/1471-2229-11-144.
- Century KS, Shapiro AD, Repetti PP, Dahlbeck D, Holub E, Staskawicz BJ. 1997.** *NDR1*, a pathogen-induced component required for *Arabidopsis* disease resistance. *Science* 278(5345):1963–1965 DOI 10.1126/science.278.5345.1963.

- Coutinho T, Rijkenberg F, Van Asch M. 1993.** Development of infection structures by *Hemileia vastatrix* in resistant and susceptible selections of *Coffea* and in *Phaseolus vulgaris*. *Canadian Journal of Botany* **71**(8):1001–1008 DOI [10.1139/b93-115](https://doi.org/10.1139/b93-115).
- Cruz F, Kalaoun S, Nobile P, Colombo C, Almeida J, Barros LMG, Alves-Ferreira M. 2009.** Evaluation of coffee reference genes for relative expression studies by quantitative real-time RT-PCR. *Molecular Breeding* **23**(4):607–616 DOI [10.1007/s11032-009-9259-x](https://doi.org/10.1007/s11032-009-9259-x).
- Diniz I, Figueiredo A, Loureiro A, Batista D, Azinheira H, Várzea V, Pereira AP, Gichuru E, Moncada P, Guerra-Guimarães L. 2017.** A first insight into the involvement of phytohormones pathways in coffee resistance and susceptibility to *Colletotrichum kahawae*. *PLOS ONE* **12**:e0178159 DOI [10.1371/journal.pone.0178159](https://doi.org/10.1371/journal.pone.0178159).
- Diniz I, Talhinhos P, Azinheira HG, Várzea V, Medeira C, Maia I, Do Céu Silva M. 2012.** Cellular and molecular analyses of coffee resistance to *Hemileia vastatrix* and nonhost resistance to *Uromyces vignae* in the resistance-donor genotype HDT832/2. *European Journal of Plant Pathology* **133**(1):141–157 DOI [10.1007/s10658-011-9925-9](https://doi.org/10.1007/s10658-011-9925-9).
- Diola V, Brito GG, Caixeta ET, Pereira LF, Loureiro ME. 2013.** A new set of differentially expressed signaling genes is early expressed in coffee leaf rust race II incompatible interaction. *Functional & Integrative Genomics* **13**(3):379–389 DOI [10.1007/s10142-013-0330-7](https://doi.org/10.1007/s10142-013-0330-7).
- Dodds PN, Rathjen JP. 2010.** Plant immunity: towards an integrated view of plant–pathogen interactions. *Nature Reviews Genetics* **11**:539–548 DOI [10.1038/nrg2812](https://doi.org/10.1038/nrg2812).
- Eshraghi L, Aryamanesh N, Anderson JP, Shearer B, McComb JA, Hardy GESJ, O'Brien PA. 2011.** A quantitative PCR assay for accurate in planta quantification of the necrotrophic pathogen *Phytophthora cinnamomi*. *European Journal of Plant Pathology* **131**:419–430 DOI [10.1007/s10658-011-9819-x](https://doi.org/10.1007/s10658-011-9819-x).
- Fernandez D, Santos P, Agostini C, Bon M, Petitot AC, Silva M, Nicole M. 2004.** Coffee (*Coffea arabica* L.) genes early expressed during infection by the rust fungus (*Hemileia vastatrix*). *Molecular Plant Pathology* **5**(6):527–536 DOI [10.1111/j.1364-3703.2004.00250.x](https://doi.org/10.1111/j.1364-3703.2004.00250.x).
- Fernandez D, Tisserant E, Talhinhos P, Azinheira H, Vieira ANA, Petitot AS, Duplessis S. 2012.** 454-pyrosequencing of *Coffea arabica* leaves infected by the rust fungus *Hemileia vastatrix* reveals in planta-expressed pathogen-secreted proteins and plant functions in a late compatible plant–rust interaction. *Molecular Plant Pathology* **13**(1):17–37 DOI [10.1111/j.1364-3703.2011.00723.x](https://doi.org/10.1111/j.1364-3703.2011.00723.x).
- Flor HH. 1971.** Current status of the gene-for-gene concept. *Annual Review of Phytopathology* **9**(1):275–296 DOI [10.1146/annurev.py.09.090171.001423](https://doi.org/10.1146/annurev.py.09.090171.001423).
- Florez JC, Mofatto LS, Do Livramento Freitas-Lopes R, Ferreira SS, Zambolim EM, Carazzolle MF, Caixeta ET. 2017.** High throughput transcriptome analysis of coffee reveals prehaustorial resistance in response to *Hemileia vastatrix* infection. *Plant Molecular Biology* **95**(6):607–623 DOI [10.1007/s11103-017-0676-7](https://doi.org/10.1007/s11103-017-0676-7).
- Ganesh D, Petitot AS, Silva MC, Alary R, Lecouls AC, Fernandez D. 2006.** Monitoring of the early molecular resistance responses of coffee (*Coffea arabica* L.) to the rust

- fungus (*Hemileia vastatrix*) using real-time quantitative RT-PCR. *Plant Science* **170**(6):1045–1051 DOI [10.1016/j.plantsci.2005.12.009](https://doi.org/10.1016/j.plantsci.2005.12.009).
- Gichuru EK, Ithiru JM, Silva MC, Pereira AP, Varzea VM. 2012.** Additional physiological races of coffee leaf rust (*Hemileia vastatrix*) identified in Kenya. *Tropical Plant Pathology* **37**(6):424–427 DOI [10.1590/S1982-56762012000600008](https://doi.org/10.1590/S1982-56762012000600008).
- Glazebrook J. 2005.** Contrasting mechanisms of defense against biotrophic and necrotrophic pathogens. *Annual Review Phytopathology* **43**:205–227 DOI [10.1146/annurev.phyto.43.040204.135923](https://doi.org/10.1146/annurev.phyto.43.040204.135923).
- Hellemans J, Mortier G, De Paepe A, Speleman F, Vandesompele J. 2007.** qBase relative quantification framework and software for management and automated analysis of real-time quantitative PCR data. *Genome Biology* **8**:R19 DOI [10.1186/gb-2007-8-2-r19](https://doi.org/10.1186/gb-2007-8-2-r19).
- Hoegen E, Strömberg A, Pihlgren U, Kombrink E. 2002.** Primary structure and tissue-specific expression of the pathogenesis-related protein PR-1b in potato. *Molecular Plant Pathology* **3**(5):329–345 DOI [10.1046/j.1364-3703.2002.00126.x](https://doi.org/10.1046/j.1364-3703.2002.00126.x).
- Huang BQ, Yeung EC. 2015.** Chemical and physical fixation of cells and tissues: an overview. In: Yeung ECT, Stasolla C, Sumner MJ, Huang BQ, eds. *Plant microtechniques and protocols*. Cham, Switzerland: Springer, 23–43 DOI [10.1007/978-3-319-19944-3_2](https://doi.org/10.1007/978-3-319-19944-3_2).
- Jaggi M. 2018.** Recent advancement on map kinase cascade in biotic stress. In: Singh A, Singh IK, eds. *Molecular aspects of plant-pathogen interaction*. Singapore: Springer, 139–158 DOI [10.1007/978-981-10-7371-7_6](https://doi.org/10.1007/978-981-10-7371-7_6).
- Jain D, Khurana J. 2018.** Role of pathogenesis-related (PR) proteins in plant defense mechanism. In: Singh A, Singh IK, eds. *Molecular aspects of plant-pathogen interaction*. Singapore: Springer, 265–281 DOI [10.1007/978-981-10-7371-7_12](https://doi.org/10.1007/978-981-10-7371-7_12).
- Jones JD, Dangl JL. 2006.** The plant immune system. *Nature* **444**:323–329 DOI [10.1038/nature05286](https://doi.org/10.1038/nature05286).
- Juárez-Bravo A, Quevedo-Nolasco A, Malagón-González F, Morales-Ramos V. 2018.** Características físicas del fruto de café (*Coffea arabica* L.) en híbridos de Timor. *Agroproductividad* **11**:115–120.
- Katagiri F, Tsuda K. 2010.** Understanding the plant immune system. *Molecular Plant-Microbe Interactions* **23**:1531–1536 DOI [10.1094/MPMI-04-10-0099](https://doi.org/10.1094/MPMI-04-10-0099).
- Kim DS, Hwang BK. 2014.** An important role of the pepper phenylalanine ammonia-lyase gene (*PAL1*) in salicylic acid-dependent signaling of the defense response to microbial pathogens. *Journal of Experimental Botany* **65**(9):2295–2306 DOI [10.1093/jxb/eru109](https://doi.org/10.1093/jxb/eru109).
- Knepper C, Day B. 2010.** From perception to activation: the molecular-genetic and biochemical landscape of disease resistance signaling in plants. *The Arabidopsis Book* **8**:e012 DOI [10.1199/tab.0124](https://doi.org/10.1199/tab.0124).
- Knepper C, Savory EA, Day B. 2011a.** Arabidopsis *NDR1* is an integrin-like protein with a role in fluid loss and plasma membrane-cell wall adhesion. *Plant Physiology* **156**(1):286–300 DOI [10.1104/pp.110.169656](https://doi.org/10.1104/pp.110.169656).

- Knepper C, Savory EA, Day B. 2011b.** The role of *NDR1* in pathogen perception and plant defense signaling. *Plant Signaling & Behavior* **6**(8):1114–1116 DOI [10.4161/psb.6.8.15843](https://doi.org/10.4161/psb.6.8.15843).
- Le Henanff G, Heitz T, Mestre P, Mutterer J, Walter B, Chong J. 2009.** Characterization of *Vitis vinifera* NPR1 homologs involved in the regulation of Pathogenesis-Related gene expression. *BMC Plant Biology* **9**(1):54 DOI [10.1186/1471-2229-9-54](https://doi.org/10.1186/1471-2229-9-54).
- Li YH, Windham MT, Trigiano RN, Fare DC, Spiers JM, Copes WE. 2007.** Microscopic and macroscopic studies of the development of *Puccinia hemerocallidis* in resistant and susceptible Daylily Cultivars. *Plant Disease* **91**(6):664–668 DOI [10.1094/PDIS-91-6-0664](https://doi.org/10.1094/PDIS-91-6-0664).
- Lu H, Zhang C, Albrecht U, Shimizu R, Bowman K. 2013.** Overexpression of a citrus *NDR1* ortholog increases disease resistance in Arabidopsis. *Frontiers in Plant Science* **4**:Article 157 DOI [10.3389/fpls.2013.00157](https://doi.org/10.3389/fpls.2013.00157).
- Luna GA, Macías LA, Taboada GOR, Morales RV. 2019.** Cup quality attributes of Cati-mors as affected by size and shape of coffee bean (*Coffea arabica* L.). *International Journal of Food Properties* **22**(1):758–767 DOI [10.1080/10942912.2019.1603997](https://doi.org/10.1080/10942912.2019.1603997).
- Maia T, Maciel-Zambolim E, Caixeta E, Mizubuti E, Zambolim L. 2013.** The population structure of *Hemileia vastatrix* in Brazil inferred from AFLP. *Australasian Plant Pathology* **42**(5):533–542 DOI [10.1007/s13313-013-0213-3](https://doi.org/10.1007/s13313-013-0213-3).
- Martins EMF, Moraes WBC. 1996.** Development of *Hemileia vastatrix* in coffee plants with genetic or induced resistance. *Journal of Phytopathology* **144**:519–526 DOI [10.1111/j.1439-0434.1996.tb00293.x](https://doi.org/10.1111/j.1439-0434.1996.tb00293.x).
- McHale L, Tan X, Koehl P, Michelmore RW. 2006.** Plant NBS-LRR proteins: adaptable guards. *Genome Biology* **7**:Article 212 DOI [10.1186/gb-2006-7-4-212](https://doi.org/10.1186/gb-2006-7-4-212).
- McNeece BT, Pant SR, Sharma K, Niruala P, Lawrence GW, Klink V. 2017.** A Glycine max homolog of non-race specific disease resistance 1 (*NDR1*) alters defense gene expression while functioning during a resistance response to different root pathogens in different genetic backgrounds. *Plant Physiology and Biochemistry* **114**:60–71 DOI [10.1016/j.plaphy.2017.02.022](https://doi.org/10.1016/j.plaphy.2017.02.022).
- Montagnon C, Marraccini P, Bertrand B. 2012.** Breeding for coffee quality. In: Oberthür T, Läderach PH, Pohlman A, Cock J, eds. *Specialty coffee: managing quality*. Norcross, GA: International Plant Nutrition Institute (IPNI), 89–118.
- Naruzaka M, Kubo Y, Hatakeyama K, Imamura J, Ezura H, Nanasato Y, Tabei Y, Takano Y, Shirasu K, Narusaka Y. 2013a.** Interfamily transfer of dual NB-LRR genes confers resistance to multiple pathogens. *PLOS ONE* **8**(2):e55954 DOI [10.1371/journal.pone.0055954](https://doi.org/10.1371/journal.pone.0055954).
- Naruzaka M, Kubo Y, Hatakeyama K, Imamura J, Ezura H, Nanasato Y, Tabei Y, Takano Y, Shirasu K, Narusaka Y. 2013b.** Breaking restricted taxonomic functionality by dual resistance genes. *Plant Signaling & Behavior* **8**:e24244 DOI [10.4161/psb.24244](https://doi.org/10.4161/psb.24244).
- Niu D, Wang X, Wang Y, Song X, Wang J, Guo J, Zhao H. 2016.** *Bacillus cereus* AR156 activates PAMP-triggered immunity and induces a systemic acquired resistance

- through a NPR1- and SA-dependent signaling pathway. *Biochemical and Biophysical Research Communications* **469**(1):120–125 DOI 10.1016/j.bbrc.2015.11.081.
- Pfaffl MW. 2001.** A new mathematical model for relative quantification in real-time RT-PCR. *Nucleic Acids Research* **29**(9):2002–2007 DOI 10.1093/nar/29.9.e45.
- Pratt C, Wetmore RH. 1951.** A paraffin method for refractory plant materials. *Stain Technology* **26**(4):251–253 DOI 10.3109/10520295109113218.
- Programa de Vigilancia Epidemiológica Fitosanitaria Cafeto (PEVEF-Cafeto). 2017.** Informe epidemiológico diciembre 2017. México Servicio Nacional de Sanidad, Inocuidad y Calidad Agroalimentaria (SENASICA) 52 (Technical Bulletin).
- Ramiro DA, Escoute J, Petitot AS, Nicole M, Maluf MP, Fernandez D. 2009.** Biphasic haustorial differentiation of coffee rust (*Hemileia vastatrix* race II) associated with defense responses in resistant and susceptible coffee cultivars. *Plant Pathology* **58**(5):944–955 DOI 10.1111/j.1365-3059.2009.02122.x.
- Ramiro D, Jalloul A, Petitot A-S, De Sá MFG, Maluf MP, Fernandez D. 2010.** Identification of coffee WRKY transcription factor genes and expression profiling in resistance responses to pathogens. *Tree Genetics & Genomes* **6**(5):767–781 DOI 10.1007/s11295-010-0290-1.
- Rivera FA, Villareal RC. 2015.** La variedad Garnica de *Coffea arabica* L. El Agro Veracruzano Vol II. Academia Veracruzana de Ciencias Agrícolas, Pecuarias, Forestales, Acuícolas y Pesqueras, A.C. Veracruz, México, 46–57. Available at http://187.217.117.3/web/new_web/biblioteca/el-algro/El-Agro-Veracruzano-2015Vol_II/files/assets/basic-html/page6.html.
- Rodrigues Jr C, Gonçalves MM, Várzea V. 2004.** Importância do híbrido de Timor para o território e para o melhoramento da cafeicultura mundial. *Revista de ciências agrárias* **27**:203–216.
- Sandhu D, Tasma IM, Frasc R, Bhattacharyya MK. 2009.** Systemic acquired resistance in soybean is regulated by two proteins, orthologous to Arabidopsis NPR1. *BMC Plant Biology* **9**(1):105 DOI 10.1186/1471-2229-9-105.
- Selote D, Shine MB, Robin GP, Kachroo A. 2013.** Soybean *NDR1*-like proteins bind pathogen effectors and regulate resistance signaling. *New phytologist* **202**(2):485–498 DOI 10.1111/nph.12654.
- Shah J, Tsui F, Klessig DF. 1997.** Characterization of a salicylic acid-insensitive mutant (*sai1*) of *Arabidopsis thaliana*, identified in a selective screen utilizing the SA-inducible expression of the *tms2* gene. *Molecular Plant-Microbe Interactions* **10**(1):69–78 DOI 10.1094/mpmi.1997.10.1.69.
- Shanshan W, Xiaodong X, Lin Z, Fucheng L, Zhaopeng L, Feng L, Jun Y. 2017.** Comparative analysis of chalcone synthase gene family among *Nicotiana tabacum* L. and its diploid progenitors. *Tobacco Science & Technology* **50**(13):1–14 DOI 10.16135/j.issn1002-0861.2017.0240.
- Silva M, Nicole M, Guerra-Guimarães L, Rodrigues Jr C. 2002.** Hypersensitive cell death and post-haustorial defense responses arrest the orange rust (*Hemileia vastatrix*) growth in resistant coffee leaves. *Physiological and Molecular Plant Pathology* **60**(4):169–183 DOI 10.1006/pmpp.2002.0389.

- Silva MC, Nicole M, Rijo L, Geiger JP, Rodrigues Jr CJ. 1999. Cytochemical Aspects of the plant–rust fungus interface during the compatible interaction *Coffea arabica* (cv. Caturra)—*Hemileia vastatrix* (race III). *International Journal of Plant Sciences* **160**(1):79–91 DOI 10.1086/314113.
- Silva ML, Rijo L, Rodrigues Jr CJ. 1985. Differences in aggressiveness of two isolates of race III of *Hemileia vastatrix* on the cultivar Caturra of *Coffea arabica*. In: *Colloque Scientifique International sur le Café*. 11. Lomé: Fevrier, 11–15.
- Stasolla C, Yeung EC. 2015. Paraffin and polyester waxes. In: Yeung ECT, Stasolla C, Sumner MJ, Huang BQ, eds. *Plant microtechniques and protocols*. Springer, 45–66 DOI 10.1007/978-3-319-19944-3_3.
- Talhinhas P, Batista D, Diniz I, Vieira A, Silva DN, Loureiro A, Tavares S, Pereira AP, Azinheira HG, Guerra-Guimarães L. 2017. The coffee leaf rust pathogen *Hemileia vastatrix*: one and a half centuries around the tropics. *Molecular Plant Pathology* **18**(8):1039–1051 DOI 10.1111/mpp.12512.
- Thirumalachar MJ, Narasimhan MJ. 1947. Studies on the morphology and parasitism of *Hemileia* species on *Rubiaceae* in Mysore. *Annals of Botany* 77–89.
- Untergasser A, Nijveen H, Rao X, Bisseling T, Geurts R, Leunissen JA. 2007. Primer3Plus, an enhanced web interface to Primer3. *Nucleic Acids Research* **35**(suppl_2):W71–W74 DOI 10.1093/nar/gkm306.
- Van Loon LC, Rep M, Pieterse CM. 2006. Significance of inducible defense-related proteins in infected plants. *Annual Review of Phytopathology* **44**:135–162 DOI 10.1146/annurev.phyto.44.070505.143425.
- Várzea V, Marques D. 2005. Population variability of *Hemileia vastatrix* vs. coffee durable resistance. In: Zambolim L, Zambolim E, Várzea VMP, eds. *Durable resistance to coffee leaf rust*. Viçosa-Brazil: UFV Press, 53–74.
- Vieira A, Talhinhas P, Loureiro A, Duplessis S, Fernandez D, Silva Mdo C, Paulo OS, Azinheira HG. 2011. Validation of RT-qPCR reference genes for in planta expression studies in *Hemileia vastatrix*, the causal agent of coffee leaf rust. *Fungal Biology* **115**:891–901 DOI 10.1016/j.funbio.2011.07.002.
- Walker NJ. 2002. A technique whose time has come. *Science* **296**(5567):557–559 DOI 10.1126/science.296.5567.557.
- Wang X, Tang C, Deng L, Cai G, Liu X, Liu B, Han D. 2010. Characterization of a pathogenesis-related thaumatin-like protein gene TaPR5 from wheat induced by stripe rust fungus. *Physiologia Plantarum* **139**(1):27–38 DOI 10.1111/j.1399-3054.2009.01338.x.
- World Coffee Research. 2018. Arabica coffee varieties: a global catalog of varieties. World Coffee Research, Portland, US, 72. Available at <https://varieties.worldcoffeeresearch.org/content/3-releases/20170808-arabica-coffee-varieties/las-variedades-del-cafe-arabica.pdf>.
- Yahyaa M, Ali S, Davidovich-Rikanati R, Ibdah M, Shachtier A, Eyal Y, Ibdah M. 2017. Characterization of three chalcone synthase-like genes from apple (*Malus domestica* Borkh.). *Phytochemistry* **140**:125–133 DOI 10.1016/j.phytochem.2017.04.022.

- Zambolim L. 2016.** Current status and management of coffee leaf rust in Brazil. *Tropical Plant Pathology* **41**(1):1–8 DOI [10.1007/s40858-016-0065-9](https://doi.org/10.1007/s40858-016-0065-9).
- Zhong X, Xi L, Lian Q, Luo X, Wu Z, Seng S, Yi M. 2015.** The NPR1 homolog GhNPR1 plays an important role in the defense response of *Gladiolus hybridus*. *Plant Cell Reports* **34**(6):1063–1074 DOI [10.1007/s00299-015-1765-1](https://doi.org/10.1007/s00299-015-1765-1).