

what's your diagnosis?

A previously healthy 77-year-old man with a painful mass in the calf for two months

Serdar Özbarlas,* Aydiner Kalacı,† Cenk Özkan,* Emre Togrul*

From the *Department of Orthopaedics and Traumatology, Çukurova University Faculty of Medicine and †Department of Orthopaedics and Traumatology, Mustafa Kemal University Faculty of Medicine

Correspondence and reprint requests: Aydiner Kalacı, MD Department of Orthopaedics and Traumatology Mustafa Kemal University Faculty of Medicine Hatay 31100, Turkey T: +90-326-214 8661 F: +90-326-214 4977 kalaci@mku.edu.tr Accepted for publication August 2006

Ann Saudi Med 2007;27(1):49-50

A previously healthy 77-year-old man presented with a painful mass in the calf for two months. He had a history of blunt trauma 5 years ago and the injury had been treated conservatively. Physical examination showed a local tenderness and a fusiform, fluctuating mass measuring 15×6×6 cm in the antero-lateral aspect of the right calf. The ankle showed a full range of motion with sensory and motor functions preserved. The results of laboratory tests, including glucose,

alkaline phosphatase, calcium, phosphate and erythrocyte sedimentation rate were all normal. Plain X-ray and MRI of the calf were abnormal (Figures 1, 2).

What are the abnormalities seen in the plain radiographs and MRI?

What's your differential diagnosis?

What's the diagnosis?

Answer on page 55.



Figure 1. Anteroposterior (A) and lateral (B) radiographs of the cruris.

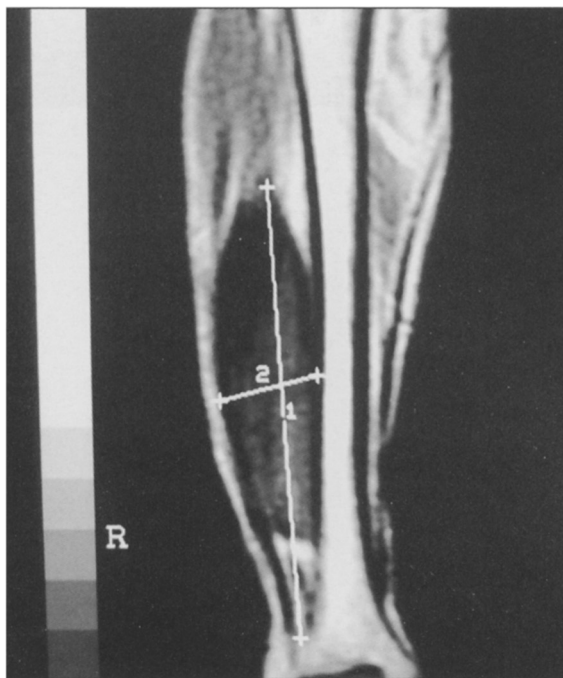


Figure 2a. Frontal spin-echo T1-weighted MRI of the calf.

what's your diagnosis?

Figure 2b.
Axial T1- and
T2-weighted MRI
scan (proximal
section) (left).

Figure 2c.
Axial T1- and
T2-weighted MRI
scans (distal
section) (right).

