




## RESEARCH ARTICLE

# Sex differences in predictors and regional patterns of brain age gap estimates

Nicole Sanford<sup>1</sup>  | Ruiyang Ge<sup>1</sup> | Mathilde Antoniades<sup>2</sup> | Amirhossein Modabbernia<sup>3</sup> | Shalaila S. Haas<sup>3</sup> | Heather C. Whalley<sup>4</sup> | Liisa Galea<sup>5</sup> | Sebastian G. Popescu<sup>6</sup> | James H. Cole<sup>7,8</sup>  | Sophia Frangou<sup>1,3</sup> 

<sup>1</sup>Department of Psychiatry, Djavad Mowafaghian Centre for Brain Health, University of British Columbia, Vancouver, British Columbia, Canada

<sup>2</sup>Center for Biomedical Image Computing and Analytics, Perelman School of Medicine, University of Pennsylvania, Philadelphia, Pennsylvania, USA

<sup>3</sup>Department of Psychiatry, Icahn School of Medicine at Mount Sinai, New York, New York, USA

<sup>4</sup>Department of Psychiatry, University of Edinburgh, Edinburgh, UK

<sup>5</sup>Department of Psychology, Djavad Mowafaghian Centre for Brain Health, University of British Columbia, Vancouver, British Columbia, Canada

<sup>6</sup>Biomedical Image Analysis Group, Imperial College London, London, UK

<sup>7</sup>Centre for Medical Image Computing, University College London, London, UK

<sup>8</sup>Dementia Research Centre, Queen Square Institute of Neurology, University College London, London, UK

## Correspondence

Sophia Frangou, Department of Psychiatry, Djavad Mowafaghian Centre for Brain Health, University of British Columbia, Vancouver, BC, Canada.

Email: [sophia.frangou@gmail.com](mailto:sophia.frangou@gmail.com)

## Funding information

McDonnell Center for Systems Neuroscience; NIH Blueprint for Neuroscience Research, Grant/Award Number: 1U54MH091657; UBC Institute of Mental Health Marshall Fellowship

## Abstract

The brain-age-gap estimate (brainAGE) quantifies the difference between chronological age and age predicted by applying machine-learning models to neuroimaging data and is considered a biomarker of brain health. Understanding sex differences in brainAGE is a significant step toward precision medicine. Global and local brainAGE (G-brainAGE and L-brainAGE, respectively) were computed by applying machine learning algorithms to brain structural magnetic resonance imaging data from 1113 healthy young adults (54.45% females; age range: 22–37 years) participating in the Human Connectome Project. Sex differences were determined in G-brainAGE and L-brainAGE. Random forest regression was used to determine sex-specific associations between G-brainAGE and non-imaging measures pertaining to sociodemographic characteristics and mental, physical, and cognitive functions. L-brainAGE showed sex-specific differences; in females, compared to males, L-brainAGE was higher in the cerebellum and brainstem and lower in the prefrontal cortex and insula. Although sex differences in G-brainAGE were minimal, associations between G-brainAGE and non-imaging measures differed between sexes with the exception of poor sleep quality, which was common to both. While univariate relationships were small, the most important predictor of higher G-brainAGE was self-identification as non-white in males and systolic blood pressure in females. The results demonstrate the value of applying sex-specific analyses and machine learning methods to advance our understanding of sex-related differences in factors that influence the rate of brain aging and provide a foundation for targeted interventions.

## KEYWORDS

aging, brainAGE, human connectome project, machine learning, sex differences, structural MRI, young adults

This is an open access article under the terms of the [Creative Commons Attribution-NonCommercial-NoDerivs](https://creativecommons.org/licenses/by-nc-nd/4.0/) License, which permits use and distribution in any medium, provided the original work is properly cited, the use is non-commercial and no modifications or adaptations are made.

© 2022 The Authors. *Human Brain Mapping* published by Wiley Periodicals LLC.

## 1 | INTRODUCTION

Neuroimaging studies have been instrumental in identifying sex differences in brain structure across the lifespan (Ge et al., 2021; Jahanshad & Thompson, 2017; Kaczkurkin et al., 2019; Ruigrok et al., 2014). Brain structure shows profound age-related changes throughout the lifespan (Dima et al., 2022; Frangou et al., 2022; Lebel & Beaulieu, 2011; Storsve et al., 2014; Tamnes et al., 2013; Wierenga et al., 2022), which are also modified by sex. Females show somewhat accelerated brain maturation during adolescence, suggesting a link with pubertal onset (Ball et al., 2021; Brouwer et al., 2021). In middle and late adulthood, sex differences in age-related brain changes appear less pronounced (Bittner et al., 2021) but female brains may retain more “youthful” transcriptomic and metabolic features than male brains (Beheshti et al., 2021; Berchtold et al., 2008; Goyal et al., 2017, 2019; Skene et al., 2017). In females, there are fewer age-related changes in aerobic glycolysis (Goyal et al., 2017, 2019) and in the expression of genes related to energy production and protein synthesis (Berchtold et al., 2008; Skene et al., 2017). These transcriptomic and metabolic findings show regional differences, with females retaining more youthful features primarily in prefrontal areas (Beheshti et al., 2021; Goyal et al., 2017). Whether this pattern is also reflected in macro-structural brain morphometry is currently unknown.

Besides sex, numerous factors are known to influence the rate of age-related brain changes. Those thought to accelerate brain aging notably include smoking (Karama et al., 2015), alcohol use (Topiwala et al., 2017), obesity (Gurholt et al., 2021), hypertension (Gurholt et al., 2021), psychopathology (Wertz et al., 2021), poor inter-personal function (Hatton et al., 2018) and lower socioeconomic status (Chan et al., 2018). Conversely, the rate of brain aging may be attenuated in individuals with higher cognitive function and educational attainment (Elliott et al., 2019) and better physical fitness (Steffener et al., 2016). Associations between accelerated brain aging and indicators of age-dependent decline can be detected as early as the 3rd and 4th decade of life, even in generally healthy individuals (Belsky et al., 2015; Elliott et al., 2019). This evidence underscores the importance of focusing on young adulthood while testing for sex differences as attenuating factors in this age group may contribute toward targeted interventions for preventing deterioration in brain health later in life (Belsky et al., 2015; Elliott et al., 2019).

Based on these considerations, the current study aims to advance knowledge on sex differences in the neuroanatomical pattern and in the predictors of brain aging in young adulthood. To achieve this, we availed of machine learning methods to yield estimates of the biological age of the brain (brain-age) based on neuroimaging features. The gap between brain-age and chronological age, referred to here as the brain-age-gap estimate (brainAGE), enables inferences about the apparent acceleration or delay in age-related biological processes. We used structural magnetic resonance imaging (MRI) data obtained from young adults (age range 22–37 years) participating in the Human Connectome Project (HCP; <https://www.humanconnectome.org/>) to

compute global (G-brainAGE) and local brainAGE (L-brainAGE). G-brainAGE is a global index of age-related changes across the brain (Cole et al., 2017; Cole & Franke, 2017; Franke et al., 2010) while L-brainAGE informs about regional age-related brain changes (Popescu et al., 2021). We hypothesized that sex differences in L-brainAGE might follow the same pattern observed in transcriptomic and metabolic data (Beheshti et al., 2021; Berchtold et al., 2008; Goyal et al., 2017, 2019; Skene et al., 2017), with females having more youthful brains, particularly in prefrontal regions. The HCP also includes non-imaging variables pertaining to demographic characteristics, cognition, mental health, interpersonal relationships, physical fitness, and lifestyle characteristics that enable testing for sex differences in factors that may accelerate or delay against age-related brain changes.

## 2 | METHODS

### 2.1 | Participants

We used de-identified data from the S1200 public release of the Human Connectome Project (HCP; <https://www.humanconnectome.org/study/hcp-young-adult/document/1200-subjects-data-release>) which comprises 1113 healthy young adults (606 females) with a mean age of 28.80 years (range 22–37 years). Ethical approval for this study was obtained by the HCP coordinating center.

### 2.2 | Neuroimaging

Whole-brain T<sub>1</sub>-weighted MRI scans were acquired in the HCP participants on a Siemens Skyra 3T scanner (Erlanger, Germany) (details in Supporting Information). Images were downloaded from the HCP repository and processed locally.

#### 2.2.1 | Local brainAGE computation

The process for generating local brainAGE (L-brainAGE) estimates followed the procedures developed by Popescu et al. (2021), which are described in the Supporting Information. Briefly, the T<sub>1</sub>-weighted images of the HCP participants were normalized using affine followed by nonlinear registration, corrected for bias field inhomogeneities, and segmented into gray and white matter and cerebrospinal fluid components. The Diffeomorphic Anatomic Registration Through Exponentiated Lie algebra algorithm (DARTEL; Ashburner, 2007) was applied to normalize the segmented scans into a standard MNI space (MNI-152 space). The gray and white matter outputs were used as input to a pre-trained, convolutional neural network (U-Net) to yield voxel-wise estimates of L-brainAGE using parameters provided by Popescu et al. (2021) (<https://github.com/SebastianPopescu/U-NET-for-LocalBrainAge-prediction>). The model was trained and tested in a sample of T<sub>1</sub>-weighted brain scans from 4155 healthy individuals aged

18–90 years. Importantly, the HCP dataset was not used in the development of the L-brainAGE model. Performance accuracy was ascertained using the voxel-level Mean Absolute Error (MAE), which quantifies the absolute difference between the neuroimaging-predicted age and the chronological age. The MAE was not adjusted for chronological age.

## 2.2.2 | Global brainAGE computation

Downloaded  $T_1$ -weighted images for HCP participants were processed using standard pipelines implemented in SPM12 (<https://www.fil.ion.ucl.ac.uk/spm/software/spm12/>) and the computational anatomy toolbox (CAT12; Gaser et al., 2022) (<http://www.neuro.uni-jena.de/cat/>). The output was used as the input features in a linear support vector regression with 10-fold cross-validation (Schölkopf & Smola, 2002) implemented in the freely available machine-learning software NeuroMiner (<https://github.com/neurominer-git/NeuroMiner-1>), which has been widely used for age prediction from neuroimaging data (Besteher et al., 2019; Koutsouleris et al., 2014; Löwe et al., 2016) (details in Supporting Information). The age-prediction models were conducted separately for male and female HCP participants. The MAE was used to ascertain model accuracy and was not adjusted for chronological age. G-brainAGE in each HCP participant was computed by subtracting their chronological age from the neuroimaging-predicted age. To account for residual associations with age, G-brainAGE was corrected separately in males and females by regressing out chronological age as per Le et al. (2018); unless otherwise specified, the corrected G-brainAGE values were used in all subsequent analyses.

For both L-brainAGE and G-brainAGE, positive values indicate higher brain age relative to chronological age, while the opposite is true for negative values.

## 2.3 | Non-imaging measures of health and behavior

The HCP dataset provides comprehensive information about non-imaging measures (NIMs) regarding the participants' physical and mental health, cognitive characteristics, and lifestyle. We excluded NIMs where >90% of the sample endorsed the same response, had >10% missing values, or were highly colinear ( $r > .9$ ) (Supporting Information Table S1). Among the retained NIMs, we used age-adjusted measures when available and imputed missing values using the “mice” R package (Multivariate Imputation by Chained Equations; van Buuren & Groothuis-Oudshoorn, 2011). Based on prior literature (Chan et al., 2018; Elliott et al., 2019; Gurholt et al., 2021; Hatton et al., 2018; Karama et al., 2015; Steffener et al., 2016; Topiwala et al., 2017; Wertz et al., 2021), we distinguished between NIMs considered as factors that can potentially increase or decrease G-brainAGE (i.e., predictors) and those NIMs that can be considered functional correlates of G-brainAGE.

### 2.3.1 | Predictors of G-brainAGE

NIMs considered as predictors of G-brainAGE pertained to (1) sociodemographic characteristics (e.g., race, sex, education); (2) quality of interpersonal relationships (e.g., loneliness, emotional support); (3) mental health (e.g., personal and parental psychopathology); (4) physical health (e.g., body mass index, blood pressure); (5) substance use (e.g., parental history and personal history of alcohol and substance use); (6) female reproductive health (e.g., menstrual history and birth control use). In total, we considered 28 NIMs as predictors of interest for G-brainAGE for both sexes and an additional 4 NIMs pertaining to reproductive health for females only. Of note, participants were asked to self-identify any of the 5 racial categories defined by the 1997 Office of Management and Budget standards on race and ethnicity (i.e., White; black or African American; American Indian or Alaskan Native; Asian; Native Hawaiian or Other Pacific Islander). These categories represent social definitions of race in the US and should not be interpreted in biological, anthropological, or genetic terms. Detailed definitions of these NIMs and the instruments used for their assessment are provided in Supporting Information and Supporting Information Table S2. Their distribution in the sample is shown in Supporting Information Table S4.

### 2.3.2 | Functional indicators of brain aging

NIMs considered as functional indicators of brain aging pertained to fluid and crystallized intelligence and physical fitness as captured by submaximal endurance, gait speed, and hand grip strength (Supporting Information Table S3). These variables were chosen based on the current consensus that they are reliable and sensitive measures of age-related frailty (Belsky et al., 2015; Kennedy et al., 2014). Their distribution in the sample is shown in Supporting Information Table S4.

## 2.4 | Statistical approach

### 2.4.1 | Sex differences in G-brainAGE and L-brainAGE

Sex differences were computed on a subset of unrelated individuals (i.e., one randomly selected participant per family,  $n = 445$ ). As G-brainAGE was already corrected for age, chronological age was entered as a covariate in the models for L-brainAGE. Statistical significance was set at  $P_{FWE} < .05$  after family-wise error (FWE) correction.

### 2.4.2 | Selection of predictors of brain aging

To enhance interpretability and reduce the number of statistical tests we focused on potential predictors (Supporting Information Table S2) that had at least a nominal association with G-brainAGE in this sample. These same predictors were then tested for their association with

L-brainAGE. Although some predictors may be associated with L-brainAGE alone, we focused on those that seem to have a global influence on brain aging as these are likely to be more meaningful for prevention and intervention strategies. Accordingly, and separately for each sex, we selected predictors that showed at least minimal univariate associations with G-brainAGE ( $\rho > 0.1$  or  $R^2 > .01$  for continuous and categorical variables, respectively).

### 2.4.3 | Predictor importance for G-brainAGE

The selected predictors were entered into sex-specific random forest (RF) regression models to test their association with G-brainAGE (Breiman, 2001). RF regression is an ensemble machine learning method, which involves the construction of multiple decision trees (i.e., forests) via bootstrap (bagging) and aggregates the predictions from these multiple trees to reduce the variance and improve the robustness and accuracy. For each bootstrapped sample, a portion of the observations (out-of-bag; OOB) is withheld and not used in the construction of the trees. RF allows for an importance measure to be determined for each predictor by measuring the effect of predictor permutation on the model's mean decrease in accuracy. RF with 10-fold cross-validation was implemented using the "randomForest" package in R using 500 trees and a minimum terminal node sample size of 5. Importance values were scaled to range from 0–100 and then, for each predictor, averaged across folds. The directionality of relationships between the predictors and G-brainAGE was determined by examining beta values obtained by linear regression.

### 2.4.4 | Sex-specific predictors of L-brainAGE

The sex-specific predictors selected for the G-brainAGE analyses were entered into sex-specific, voxel-wise multiple regression models to examine their relationships with L-brainAGE, on the same subset used to test for sex differences in L-brainAGE. For both models, chronological age was entered as a covariate. Statistical significance was set at  $P_{FWE} < .05$ .

### 2.4.5 | Functional indicators of brain-aging

Associations between functional indicators of brain aging were determined for G-brainAGE only using Spearman's correlations. To account for dependence between observations due to relatedness in the HCP data, stratified bootstrapping was carried out with 100 iterations such that each bootstrapped sample consisted of unrelated individuals (i.e., one randomly selected participant per family,  $n = 445$ ).

### 2.4.6 | Supplemental analyses for G-brainAGE

We used the procedures described above to identify predictors of G-brainAGE in the entire sample (i.e., including both sexes).

## 3 | RESULTS

### 3.1 | Sex differences in G-brainAGE and L-brainAGE

Model performance for G-brainAGE prediction was similar in females and males; the MAE was 2.72 years for both sexes and the respective  $R^2$  was 93% and 96%. There was no residual association between chronological age and G-brainAGE corrected for age-bias for either sex (Supporting Information Figure S1). The mean and standard deviation (SD) of the uncorrected G-brainAGE was 0.03 (3.25) years for females and  $-0.07$  (3.31) years for males; the difference amounts to approximately 1 calendar month and was not significant when age-corrected G-brainAGE values were used.

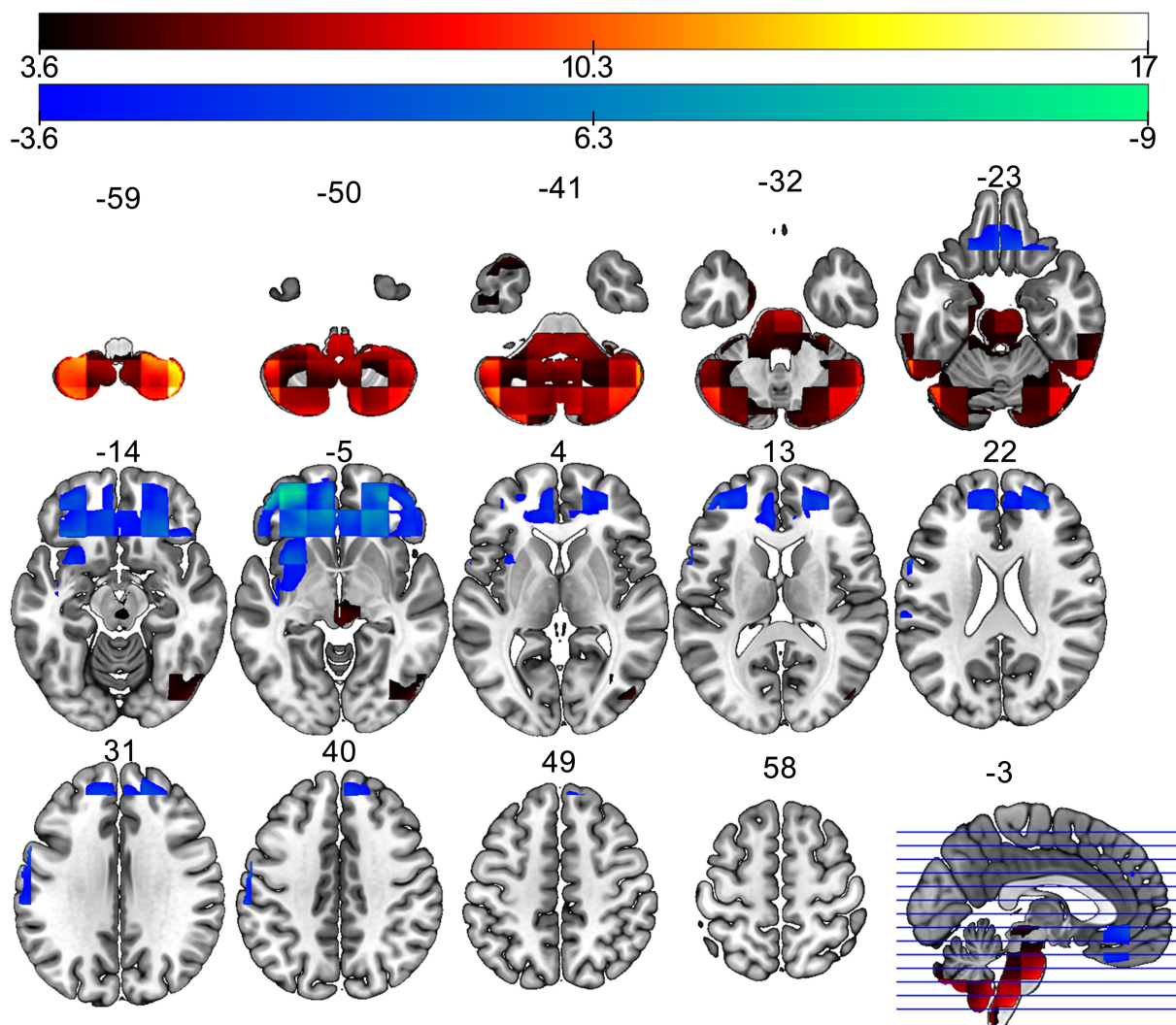
However, compared to males, females had significantly lower L-brainAGE in anterior brain regions, specifically in the ventral and dorsal medial prefrontal cortex, the ventrolateral prefrontal cortex, and the insula, and significantly higher L-brainAGE in posterior regions that included the cerebellum and brainstem ( $P_{FWE} < .05$ ; Figure 1). Local MAE values showed a ventral to dorsal and a posterior to the anterior gradient of decreasing MAE (Supporting Information Figure S2).

### 3.2 | Predictor importance for G-brainAGE in females and males

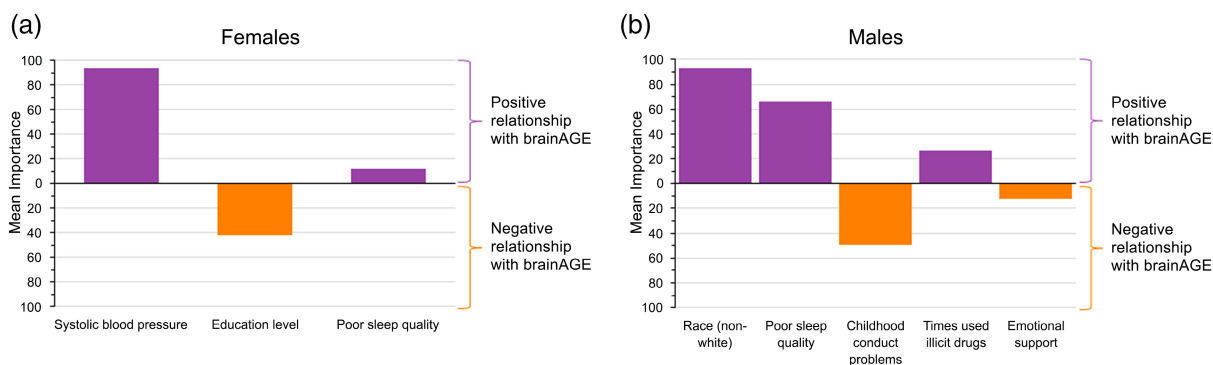
Univariate associations with G-brainAGE, although small, identified largely different NIMs for females and males (Supporting Information Table S5) which were then entered into sex-specific RF models. Accordingly, the RF model for females included 3 NIMs (i.e., systolic blood pressure, poor sleep quality, and years of education; Figure 2a), and the corresponding model for males included 5 NIMs (i.e., self-identified race, poor sleep quality, childhood conduct problems, times used illicit drugs, and emotional support; Figure 2b). Figure 2 presents the importance of each predictor in the sex-specific models. Supplemental analyses including both sexes identified poor sleep quality, being non-white, and times used illicit drugs as predictors of higher G-brainAGE (Supporting Information Figure S3).

### 3.3 | Voxel-level associations between L-brainAGE and brain aging predictors

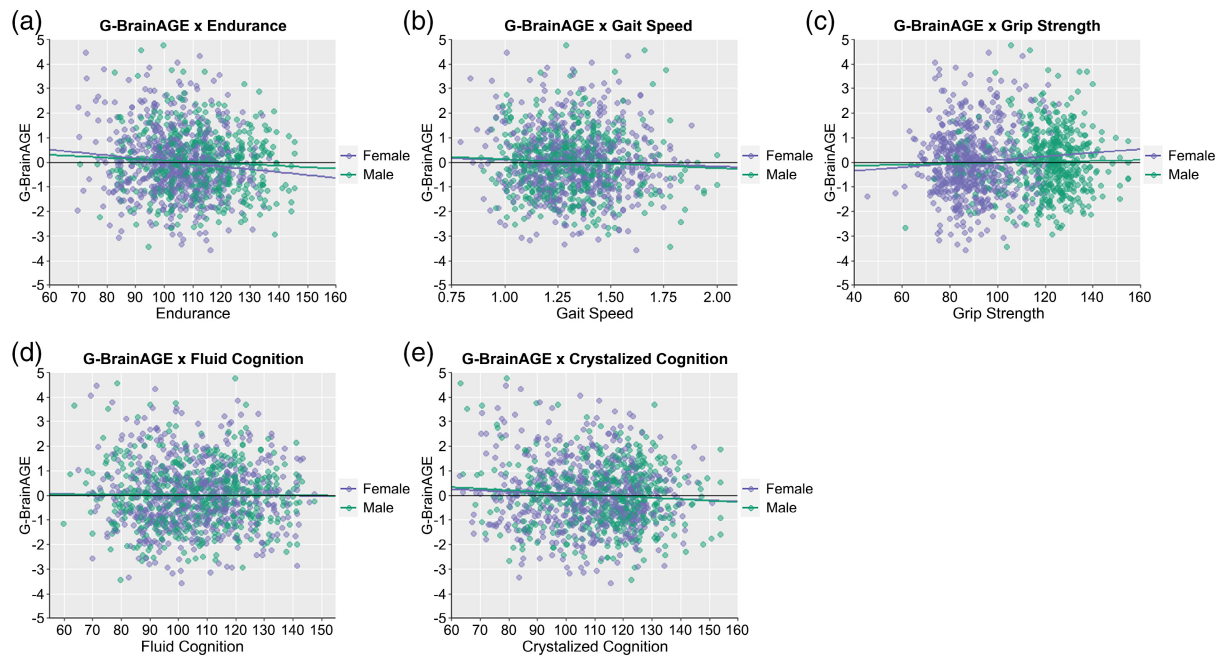
Sex-specific, voxel-wise multiple regression models between L-brainAGE and the same predictors used in the preceding analyses for G-brainAGE did not identify significant associations in females at  $P_{FWE} < .05$ ; however, at the uncorrected level, positive associations were noted for systolic blood pressure (Supporting Information Figure S4). In males, widespread and significant positive associations at  $P_{FWE} < .05$  were found for participants self-identifying as Black (Supporting Information Figure S5A), while associations with poor sleep quality were mostly localized in the cerebellum (Supporting Information Figure S5B).



**FIGURE 1** Sex differences in L-brainAGE. T-value overlay of statistically significant sex differences in L-brainAGE (PFWE < .05 with familywise error-correction). Red/yellow: Females > males; blue: Males > females. Images are displayed in neurological orientation with MNI coordinates



**FIGURE 2** Predictors of G-brainAGE in females and males. Relative importance of predictors derived from random forest regression based on mean decrease in prediction accuracy when removed from the model, scaled to range from 0–100 (values do not reflect percentage of variance explained); predictors are displayed in descending order of importance; (a) in females, there was a positive relationship with G-brainAGE for systolic blood pressure and poor sleep quality, and a negative relationship for education level; (b) in males, there was a positive relationship with G-brainAGE for non-white self-identified racial categories, poor sleep quality, and times used illicit drugs, and a negative relationship for number of childhood conduct problems and emotional support



**FIGURE 3** Scatter plots of the association of G-brainAGE and functional indicators. Results are shown for (a) endurance, (b) gait speed, (c) grip strength, (d) fluid cognition composite score, and (e) crystallized cognition composite score; green = males; purple = females. None of these associations were statistically significant

### 3.4 | Functional indicators of brain aging

In both sexes, there were minimal and non-significant associations between G-brainAGE and endurance, gait speed, grip strength, composite score for fluid intelligence, and composite score for crystallized intelligence (Figure 3a–e and Supporting Information Table S6).

## 4 | DISCUSSION

The present study used machine learning methods to test for sex differences in G-brainAGE and L-brainAGE and in the predictors of higher G-brainAGE in young adults. While G-brainAGE showed negligible sex differences, L-brainAGE estimates indicated a more “youthful” appearing brain pattern in females compared to males in prefrontal cortical regions, while the opposite was the case for cerebellar regions. Poor sleep quality emerged as an important predictor of higher G-brainAGE in both men and women, while other predictors were sex-specific. Notably, self-identifying as non-white was the most important contributor to higher G-brainAGE in males, while higher systolic blood pressure was the most important contributor to higher G-brainAGE in females.

### 4.1 | Sex differences in regional but not global aging patterns in young adults

G-brainAGE is a summary index of the global pattern of apparent brain structural aging with positive and negative values being,

respectively, indicative of accelerated or delayed aging. In the current sample, the mean G-brainAGE in both sexes was close to zero, suggesting that their global aging pattern was congruent with their chronological age. These findings are aligned with prior studies demonstrating that sex differences in G-brainAGE that emerge during adolescence appear to attenuate in early and middle adulthood (Bittner et al., 2021; Brouwer et al., 2021). The application of U-Net, a novel machine-learning algorithm applied to brain structural data, enabled us to obtain regional estimates of brain aging, thus revealing fine-grained sex differences. The L-brainAGE findings suggest that female brains are more “youthful” than male brains in prefrontal cortical regions, while male brains are more youthful in cerebellar regions. Ventral cerebellar regions showed a higher degree of MAE in brain age estimates than in prefrontal cortical regions, which may have a bearing on the results (Supporting Information Figure S2). However, the pattern identified here closely mirrors the regional gradient of aerobic glycolysis in the human brain, whereby resting glucose consumption is about 10 times higher in prefrontal regions compared to the cerebellum (Goyal et al., 2014; Vaishnavi et al., 2010). This regional pattern parallels sex differences in the expression of genes involved in neuronal integrity, protein synthesis, and energy production (Berchtold et al., 2008; Goyal et al., 2014, 2019; Skene et al., 2017). Expression of these genes is higher in females than in males across adulthood (Berchtold et al., 2008; Skene et al., 2017) and has been associated with more youthful metabolic aging patterns in females than in males (Goyal et al., 2019). Our results, therefore, suggest the possibility that the sex differences in the regional rate of age-related brain structural changes may reflect transcriptomic and metabolic mechanisms that could be examined further in future studies.

## 4.2 | Functional association of G-brainAGE

We found no association between G-brainAGE with cognitive ability or measures of physical fitness, which is perhaps not unexpected since there was little evidence of accelerated global brain aging in the current sample. Moreover, it is possible that these measures do not strongly correlate with brain structure in healthy young adults but may emerge as stronger indicators of brain health in older adults.

## 4.3 | Lower sleep quality as a predictor of higher G-brainAGE in females and males

Sleep is essential in maintaining homeostasis via multiple cellular, immune, and metabolic pathways (Zielinski et al., 2016). Within the brain, sleep exerts powerful effects on molecular, cellular, and network mechanisms of plasticity (Abel et al., 2013). Even minor decrements in sleep quality disrupt circadian rhythms, impair the clearance of misfolded proteins, and induce molecular and cellular changes conducive to neuroinflammation and oxidative stress (reviewed by Bishir et al., 2020). The current findings reinforce this prior literature in demonstrating an association between poor sleep quality and higher G-brainAGE. Although a similar proportion of female (32.84%) and male (30.57%) participants reported sleep problems (Supporting Information Table S4), poor sleep quality appeared to play a more important role for G-brainAGE and L-brainAGE in males. Compared to females, males have less slow-wave sleep, which shows steeper age-related decline beginning in early adulthood (Yetton et al., 2018). Prior studies suggested an association between this age-related reduction in sleep quality with greater cortical thinning (Goldstone et al., 2018), which is captured by the G-brainAGE measure here. Additionally, the L-brainAGE analyses highlight the importance of cerebellar age-related reduction in males. These findings resonate with those of Zhou and colleagues (Zhou et al., 2017) who reported an association between increased brain aging in terms of cortico-cerebellar connectivity and poor sleep. However, we acknowledge that this explanation is only speculative since sleep architecture was not captured in the present study.

## 4.4 | Sex-specific predictors of G-BrainAGE

Numerically fewer predictors showed an association with G-brainAGE in females compared to males, with higher systolic blood pressure having the largest contribution to G-brainAGE and L-brainAGE in females but not in males. This observation accords with findings in a large longitudinal population-based sample ( $n = 7485$ ; age range 20–76 years) where genetic risk factors and hypertension in early adulthood were the only predictors of late-life decline in females (Anstey et al., 2021). This relative paucity of potentially modifiable predictors of brain aging in females in early adulthood could potentially contribute to their higher rates of dementia (Niu et al., 2017). We did not find significant associations between G-brainAGE and variables reflecting

reproductive activity in the young females in this sample. Estrogens are considered neuroprotective (Gould et al., 1990; McCarthy, 2008) and may contribute to decelerate brain aging in older females (Maki & Resnick, 2001). In the present study, sex hormone levels were not available, thus precluding direct assessment of their association with G-brainAGE. Nevertheless, it is possible that hormonal effects on brain morphology are less important in early adulthood but may be preconditions for maintaining a more youthful brain and/or might delay brain aging processes much later in life. Longitudinal studies taking a lifespan perspective would be required to address these issues.

Educational level made a minor contribution to G-brainAGE in females but had no significant association with G-brainAGE in males. Although earlier research had suggested that educational attainment slows the rate of brain aging (Steffener et al., 2016), this finding is consistent with the more recent evidence available that suggests that educational attainment has minimal, if any, influence on brain aging (Nyberg et al., 2021).

In males, self-reported racial categories emerged as the most important contributor to G-brainAGE and L-brainAGE; identifying as non-white was associated with higher G-brainAGE. Although this finding should be interpreted with caution given the uneven distribution of racial categories in this dataset (76% self-reported White), this is consistent with prior studies which have suggested that there is a greater burden of age-related disorders in middle-aged and older non-white individuals, particularly those of African ancestry (Amariglio et al., 2020; Gottesman et al., 2015). Biomarker-based indices of biological aging also show a similar racial pattern (Levine & Crimmins, 2014). The advantage of the current study is that the sex-specific analyses undertaken highlight the importance of this variable for males, which is especially noteworthy given that the distribution of self-reported racial categories was similar between males and females (Supporting Information Table S4). The reasons for racial differences in aging remain poorly specified but are commonly attributed to the greater social and economic adversity experienced by non-white groups (Williams & Sternthal, 2010).

## 4.5 | Limitations

In addition to issues raised in previous sections, several strengths and limitations are worth further discussion. The study is cross-sectional and as such it does not address either causality or the longitudinal evolution of the reported findings. Participant sex was based on self-report and was not genetically determined; we consider the frequency of discrepancies between genetic versus reported sex to be too low to significantly influence the reported results. Sex, as defined here, incorporates societal and lifestyle differences between females and males. The list of environmental exposures considered was substantial but not exhaustive. The HCP dataset does not include information on physical activity, which is considered protective based on its association with better cognitive performance in older adults (Colcombe & Kramer, 2003; Hughes & Ganguli, 2009), preserved gray matter (Colcombe et al., 2003), brain metabolic activity (Engeroff

et al., 2019), and with lower brainAGE (Bittner et al., 2021). The analytical approach is a particular strength of this study as it combined two different machine learning methods to identify the regional age-related patterns of brain structure and the predictors of global age-related brain structure.

While it is compelling that predictors of G-brainAGE differed between males and females, it is important to keep in mind that univariate relationships between these predictors and G-brainAGE were small (mean rho values of .10–.13 and  $R^2$  values of .015–.032, as reported in Supporting Information Table S5).

## 5 | CONCLUSIONS

The results presented here demonstrate the value of applying sex-specific analyses and machine learning methods to assess factors that influence the rate of age-related brain structural changes and their regional pattern. These findings might be useful in improving our understanding of sex-related differences in aging and in identifying modifiable factors that influence the rate of age-related biological processes. Further investigations in longitudinal cohorts are needed to determine how sex and gender might affect the trajectory of human brain aging.

### DATA AVAILABILITY STATEMENT

Data were provided by the Human Connectome Project, WU-Minn Consortium (Principal Investigators: David Van Essen and Kamil Ugurbil; 1U54MH091657) funded by the 16 NIH Institutes and Centers that support the NIH Blueprint for Neuroscience Research; and by the McDonnell Center for Systems Neuroscience at Washington University. The data that support the findings of this study consist of the HCP Young Adults 1200 Subjects Release (<https://www.humanconnectome.org/study/hcp-young-adult/document/1200-subjects-data-release>).

### ORCID

Nicole Sanford  <https://orcid.org/0000-0002-4915-2537>

James H. Cole  <https://orcid.org/0000-0003-1908-5588>

Sophia Frangou  <https://orcid.org/0000-0002-3210-6470>

### REFERENCES

- Abel, T., Havekes, R., Saletin, J. M., & Walker, M. P. (2013). Sleep, plasticity and memory from molecules to whole-brain networks. *Current Biology*, 23(17), R774–R788. <https://doi.org/10.1016/j.cub.2013.07.025>
- Amariglio, R. E., Buckley, R. F., Rabin, J. S., Papp, K. V., Quiroz, Y. T., Mormino, E. C., Sparks, K. P., Johnson, K. A., Rentz, D. M., & Sperling, R. A. (2020). Examining cognitive decline across black and white participants in the Harvard aging brain study. *Journal of Alzheimer's Disease*, 75, 1437–1446. <https://doi.org/10.3233/JAD-191291>
- Anstey, K. J., Peters, R., Mortby, M. E., Kiely, K. M., Eramudugolla, R., Cherbuin, N., Huque, M. H., & Dixon, R. A. (2021). Association of sex differences in dementia risk factors with sex differences in memory decline in a population-based cohort spanning 20–76 years. *Scientific Reports*, 11(1), 7710. <https://doi.org/10.1038/s41598-021-86397-7>
- Ashburner, J. (2007). A fast diffeomorphic image registration algorithm. *NeuroImage*, 38(1), 95–113. <https://doi.org/10.1016/j.neuroimage.2007.07.007>
- Ball, G., Kelly, C. E., Beare, R., & Seal, M. L. (2021). Individual variation underlying brain age estimates in typical development. *NeuroImage*, 235, 118036. <https://doi.org/10.1016/j.neuroimage.2021.118036>
- Beheshti, I., Nugent, S., Potvin, O., & Duchesne, S. (2021). Disappearing metabolic youthfulness in the cognitively impaired female brain. *Neurobiology of Aging*, 101, 224–229. <https://doi.org/10.1016/j.neurobiolaging.2021.01.026>
- Belsky, D. W., Caspi, A., Houts, R., Cohen, H. J., Corcoran, D. L., Danese, A., Harrington, H., Israel, S., Levine, M. E., Schaefer, J. D., Sugden, K., Williams, B., Yashin, A. I., Poulton, R., & Moffitt, T. E. (2015). Quantification of biological aging in young adults. *Proceedings of the National Academy of Sciences*, 112(30), E4104–E4110. <https://doi.org/10.1073/pnas.1506264112>
- Berchtold, N. C., Cribbs, D. H., Coleman, P. D., Rogers, J., Head, E., Kim, R., Beach, T., Miller, C., Troncoso, J., Trojanowski, J. Q., & Ronald Zielke, H., & Cotman, C. W. (2008). Gene expression changes in the course of normal brain aging are sexually dimorphic. *Proceedings of the National Academy of Sciences*, 105(40), 15605–15610. <https://doi.org/10.1073/pnas.0806883105>
- Besteher, B., Gaser, C., & Nenadić, I. (2019). Machine-learning based brain age estimation in major depression showing no evidence of accelerated aging. *Psychiatry Research: Neuroimaging*, 290, 1–4. <https://doi.org/10.1016/j.psychres.2019.06.001>
- Bishir, M., Bhat, A., Essa, M. M., Ekpo, O., Ihunwo, A. O., Veeraghavan, V. P., Mohan, S. K., Mahalakshmi, A. M., Ray, B., Tuladhar, S., Chang, S., Chidambaram, S. B., Sakharkar, M. K., Guillemin, G. J., Qoronfle, M. W., & Ojcius, D. M. (2020). Sleep deprivation and neurological disorders. *BioMed Research International*, 2020, 5764017. <https://doi.org/10.1155/2020/5764017>
- Bittner, N., Jockwitz, C., Franke, K., Gaser, C., Moebus, S., Bayen, U. J., Amunts, K., & Caspers, S. (2021). When your brain looks older than expected: Combined lifestyle risk and BrainAGE. *Brain Structure and Function*, 226(3), 621–645. <https://doi.org/10.1007/s00429-020-02184-6>
- Breiman, L. (2001). Random forests. *Machine Learning*, 45(1), 5–32. <https://doi.org/10.1023/A:1010933404324>
- Brouwer, R. M., Schutte, J., Janssen, R., Boomsma, D. I., Hulshoff Pol, H. E., & Schnack, H. G. (2021). The speed of development of adolescent brain age depends on sex and is genetically determined. *Cerebral Cortex*, 31(2), 1296–1306. <https://doi.org/10.1093/cercor/bhaa296>
- Chan, M. Y., Na, J., Agres, P. F., Savalia, N. K., Park, D. C., & Wig, G. S. (2018). Socioeconomic status moderates age-related differences in the brain's functional network organization and anatomy across the adult lifespan. *Proceedings of the National Academy of Sciences*, 115(22), E5144–E5153. <https://doi.org/10.1073/pnas.1714021115>
- Colcombe, S., & Kramer, A. F. (2003). Fitness effects on the cognitive function of older adults: A meta-analytic study. *Psychological Science*, 14(2), 125–130. <https://doi.org/10.1111/1467-9280.t01-1-01430>
- Colcombe, S. J., Erickson, K. I., Raz, N., Webb, A. G., Cohen, N. J., McAuley, E., & Kramer, A. F. (2003). Aerobic fitness reduces brain tissue loss in aging humans. *The Journals of Gerontology: Series A*, 58(2), M176–M180. <https://doi.org/10.1093/gerona/58.2.M176>
- Cole, J. H., & Franke, K. (2017). Predicting age using neuroimaging: Innovative brain ageing biomarkers. *Trends in Neurosciences*, 40(12), 681–690. <https://doi.org/10.1016/j.tins.2017.10.001>
- Cole, J. H., Poudel, R. P. K., Tsagkrasoulis, D., Caan, M. W. A., Steves, C., Spector, T. D., & Montana, G. (2017). Predicting brain age with deep learning from raw imaging data results in a reliable and heritable biomarker. *NeuroImage*, 163, 115–124. <https://doi.org/10.1016/j.neuroimage.2017.07.059>



- Dima, D., Modabbernia, A., Papachristou, E., Doucet, G. E., Agartz, I., Aghajani, M., Akudjedu, T. N., Albajes-Eizagirre, A., Alnæs, D., Alpert, K. I., Andersson, M., Andreasen, N. C., Andreassen, O. A., Asherson, P., Banaschewski, T., Bargallo, N., Baumeister, S., Baur-Streubel, R., Bertolino, A., ... (KaSP), K. S. P. (2022). Subcortical volumes across the lifespan: Data from 18,605 healthy individuals aged 3–90 years. *Human Brain Mapping*, 43, 452–469. <https://doi.org/10.1002/hbm.25320>
- Elliott, M. L., Belsky, D. W., Knodt, A. R., Ireland, D., Melzer, T. R., Poulton, R., Ramrakha, S., Caspi, A., Moffitt, T. E., & Hariri, A. R. (2019). Brain-age in midlife is associated with accelerated biological aging and cognitive decline in a longitudinal birth cohort. *Molecular Psychiatry*, 26, 3829–3838. <https://doi.org/10.1038/s41380-019-0626-7>
- Engeroff, T., Vogt, L., Fleckenstein, J., Füzéki, E., Matura, S., Pilatus, U., Schwarz, S., Deichmann, R., Hellweg, R., Pantel, J., & Banzer, W. (2019). Lifespan leisure physical activity profile, brain plasticity and cognitive function in old age. *Aging & Mental Health*, 23(7), 811–818. <https://doi.org/10.1080/13607863.2017.1421615>
- Frangou, S., Modabbernia, A., Williams, S. C. R., Papachristou, E., Doucet, G. E., Agartz, I., Aghajani, M., Akudjedu, T. N., Albajes-Eizagirre, A., Alnæs, D., Alpert, K. I., Andersson, M., Andreasen, N. C., Andreassen, O. A., Asherson, P., Banaschewski, T., Bargallo, N., Baumeister, S., Baur-Streubel, R., ... Dima, D. (2022). Cortical thickness across the lifespan: Data from 17,075 healthy individuals aged 3–90 years. *Human Brain Mapping*, 43, 431–451. <https://doi.org/10.1002/hbm.25364>
- Franke, K., Ziegler, G., Klöppel, S., & Gaser, C. (2010). Estimating the age of healthy subjects from T1-weighted MRI scans using kernel methods: Exploring the influence of various parameters. *NeuroImage*, 50(3), 883–892. <https://doi.org/10.1016/j.neuroimage.2010.01.005>
- Gaser, C., Dahnke, R., Thompson, P.M., Kurth, F., Luders, E., Alzheimer's Disease Neuroimaging Initiative (2022). CAT-A computational anatomy toolbox for the analysis of structural MRI data. *BioRxiv*. <https://doi.org/10.1101/2022.06.11.494736>
- Ge, R., Liu, X., Long, D., Frangou, S., & Vila-Rodriguez, F. (2021). Sex effects on cortical morphological networks in healthy young adults. *NeuroImage*, 233, 117945. <https://doi.org/10.1016/j.neuroimage.2021.117945>
- Goldstone, A., Willoughby, A. R., de Zambotti, M., Franzen, P. L., Kwon, D., Pohl, K. M., Pfefferbaum, A., Sullivan, E. V., Müller-Oehring, E. M., Prouty, D. E., Hasler, B. P., Clark, D. B., Colrain, J. M., & Baker, F. C. (2018). The mediating role of cortical thickness and gray matter volume on sleep slow-wave activity during adolescence. *Brain Structure and Function*, 223(2), 669–685. <https://doi.org/10.1007/s00429-017-1509-9>
- Gottesman, R. F., Fornage, M., Knopman, D. S., & Mosley, T. H. (2015). Brain aging in African-Americans: The atherosclerosis risk in communities (ARIC) experience. *Current Alzheimer Research*, 12(7), 607–613. <https://doi.org/10.2174/1567205012666150701102445>
- Gould, E., Woolley, C. S., Frankfurt, M., & McEwen, B. S. (1990). Gonadal steroids regulate dendritic spine density in hippocampal pyramidal cells in adulthood. *The Journal of Neuroscience*, 10(4), 1286–1291. <https://doi.org/10.1523/JNEUROSCI.10-04-01286.1990>
- Goyal, M. S., Blazey, T. M., Su, Y., Couture, L. E., Durbin, T. J., Bateman, R. J., Morris, J. C., Raichle, M. E., & Vlassenko, A. G. (2019). Persistent metabolic youth in the aging female brain. *Proceedings of the National Academy of Sciences of the United States of America*, 116(8), 3251–3255. <https://doi.org/10.1073/pnas.1815917116>
- Goyal, M. S., Hawrylycz, M., Miller, J. A., Snyder, A. Z., & Raichle, M. E. (2014). Aerobic glycolysis in the human brain is associated with development and neotenous gene expression. *Cell Metabolism*, 19(1), 49–57. <https://doi.org/10.1016/j.cmet.2013.11.020>
- Goyal, M. S., Vlassenko, A. G., Blazey, T. M., Su, Y., Couture, L. E., Durbin, T. J., Bateman, R. J., Benzinger, T. L. S., Morris, J. C., & Raichle, M. E. (2017). Loss of brain aerobic glycolysis in normal human aging. *Cell Metabolism*, 26(2), 353–360.e353. <https://doi.org/10.1016/j.cmet.2017.07.010>
- Gurholt, T. P., Kaufmann, T., Frei, O., Alnæs, D., Haukvik, U. K., van der Meer, D., Moberget, T., O'Connell, K. S., Leinhard, O. D., Linge, J., Simon, R., Smeland, O. B., Søndersby, I. E., Winterton, A., Steen, N. E., Westlye, L. T., & Andreassen, O. A. (2021). Population-based body-brain mapping links brain morphology with anthropometrics and body composition. *Translational Psychiatry*, 11(1), 295. <https://doi.org/10.1038/s41398-021-01414-7>
- Hatton, S. N., Franz, C. E., Elman, J. A., Panizzon, M. S., Hagler, D. J., Jr., Fennema-Notestine, C., Eyler, L. T., McEvoy, L. K., Lyons, M. J., Dale, A. M., & Kremen, W. S. (2018). Negative fateful life events in midlife and advanced predicted brain aging. *Neurobiology of Aging*, 67, 1–9. <https://doi.org/10.1016/j.neurobiolaging.2018.03.004>
- Hughes, F. T., & Ganguli, M. (2009). Modifiable midlife risk factors for late-life cognitive impairment and dementia. *Current Psychiatry Reviews*, 5(2), 73–92. <https://doi.org/10.2174/157340009788167347>
- Jahanshad, N., & Thompson, P. M. (2017). Multimodal neuroimaging of male and female brain structure in health and disease across the life span. *Journal of Neuroscience Research*, 95(1–2), 371–379. <https://doi.org/10.1002/jnr.23919>
- Kaczurkin, A. N., Raznahan, A., & Satterthwaite, T. D. (2019). Sex differences in the developing brain: Insights from multimodal neuroimaging. *Neuropsychopharmacology*, 44(1), 71–85. <https://doi.org/10.1038/s41386-018-0111-z>
- Karama, S., Ducharme, S., Corley, J., Chouinard-Decorte, F., Starr, J. M., Wardlaw, J. M., Bastin, M. E., & Deary, I. J. (2015). Cigarette smoking and thinning of the brain's cortex. *Molecular Psychiatry*, 20(6), 778–785. <https://doi.org/10.1038/mp.2014.187>
- Kennedy, B. K., Berger, S. L., Brunet, A., Campisi, J., Cuervo, A. M., Epel, E. S., Franceschi, C., Lithgow, G. J., Morimoto, R. I., Pessin, J. E., Rando, T. A., Richardson, A., Schadt, E. E., Wyss-Coray, T., & Sierra, F. (2014). Geroscience: Linking aging to chronic disease. *Cell*, 159(4), 709–713. <https://doi.org/10.1016/j.cell.2014.10.039>
- Koutsouleris, N., Davatzikos, C., Borgwardt, S., Gaser, C., Bottlender, R., Frodl, T., Falkai, P., Riecher-Rössler, A., Möller, H.-J., Reiser, M., Pantelis, C., & Meisenzahl, E. (2014). Accelerated brain aging in schizophrenia and beyond: A neuroanatomical marker of psychiatric disorders. *Schizophrenia Bulletin*, 40(5), 1140–1153. <https://doi.org/10.1093/schbul/sbt142>
- Le, T. T., Kuplicki, R. T., McKinney, B. A., Yeh, H.-W., Thompson, W. K., Paulus, M. P., Aupperle, R. L., Bodurka, J., Cha, Y.-H., Feinstein, J. S., Khalsa, S. S., Savitz, J., Simmons, W. K., & Victor, T. A. (2018). A non-linear simulation framework supports adjusting for age when analyzing BrainAGE. *Frontiers in Aging Neuroscience*, 10, 317. <https://doi.org/10.3389/fnagi.2018.00317>
- Lebel, C., & Beaulieu, C. (2011). Longitudinal development of human brain wiring continues from childhood into adulthood. *The Journal of Neuroscience*, 31(30), 10937–10947. <https://doi.org/10.1523/JNEUROSCI.5302-10.2011>
- Levine, M. E., & Crimmins, E. M. (2014). Evidence of accelerated aging among African Americans and its implications for mortality. *Social Science & Medicine*, 118, 27–32. <https://doi.org/10.1016/j.socscimed.2014.07.022>
- Löwe, L. C., Gaser, C., Franke, K., & Alzheimer's Disease Neuroimaging Initiative. (2016). The effect of the APOE genotype on individual BrainAGE in normal aging, mild cognitive impairment, and Alzheimer's disease. *PLoS One*, 11(7), e0157514. <https://doi.org/10.1371/journal.pone.0157514>
- Maki, P. M., & Resnick, S. M. (2001). Effects of estrogen on patterns of brain activity at rest and during cognitive activity: A review of neuroimaging studies. *NeuroImage*, 14(4), 789–801. <https://doi.org/10.1006/nimg.2001.0887>
- McCarthy, M. M. (2008). Estradiol and the developing brain. *Physiological Reviews*, 88(1), 91–134. <https://doi.org/10.1152/physrev.00010.2007>

- Niu, H., Álvarez-Álvarez, I., Guillén-Grima, F., & Aguinaga-Ontoso, I. (2017). Prevalence and incidence of Alzheimer's disease in Europe: A meta-analysis. *Neurologia (English Edition)*, 32(8), 523–532. <https://doi.org/10.1016/j.nrleng.2016.02.009>
- Nyberg, L., Magnussen, F., Lundquist, A., Baaré, W., Bartrés-Faz, D., Bertram, L., Boraxbekk, C. J., Brandmaier, A. M., Drevon, C. A., Ebmeier, K., Ghisletta, P., Henson, R. N., Junqué, C., Kievit, R., Kleemeyer, M., Knights, E., Kühn, S., Lindenberger, U., Penninx, B. W. J. H., ... Fjell, A. M. (2021). Educational attainment does not influence brain aging. *Proceedings of the National Academy of Sciences of the United States of America*, 118(18), e2101644118. <https://doi.org/10.1073/pnas.2101644118>
- Popescu, S. G., Glocker, B., Sharp, D. J., & Cole, J. H. (2021). Local brain-age: A U-net model. *Frontiers in Aging Neuroscience*, 13, 761954. <https://doi.org/10.3389/fnagi.2021.761954>
- Ruigrok, A. N. V., Salimi-Khorshidi, G., Lai, M.-C., Baron-Cohen, S., Lombardo, M. V., Tait, R. J., & Suckling, J. (2014). A meta-analysis of sex differences in human brain structure. *Neuroscience & Biobehavioral Reviews*, 39, 34–50. <https://doi.org/10.1016/j.neubiorev.2013.12.004>
- Schölkopf, B., & Smola, A. J. (2002). *Learning with kernels: Support vector machines, regularization, optimization, and beyond*. MIT Press.
- Skene, N. G., Roy, M., & Grant, S. G. N. (2017). A genomic lifespan program that reorganises the young adult brain is targeted in schizophrenia. *eLife*, 6, e17915. <https://doi.org/10.7554/eLife.17915>
- Steffener, J., Habeck, C., O'Shea, D., Razlighi, Q., Bherer, L., & Stern, Y. (2016). Differences between chronological and brain age are related to education and self-reported physical activity. *Neurobiology of Aging*, 40, 138–144. <https://doi.org/10.1016/j.neurobiolaging.2016.01.014>
- Storsve, A. B., Fjell, A. M., Tamnes, C. K., Westlye, L. T., Overbye, K., Aasland, H. W., & Walhovd, K. B. (2014). Differential longitudinal changes in cortical thickness, surface area and volume across the adult life span: Regions of accelerating and decelerating change. *The Journal of Neuroscience*, 34(25), 8488–8498. <https://doi.org/10.1523/JNEUROSCI.0391-14.2014>
- Tamnes, C. K., Walhovd, K. B., Dale, A. M., Østby, Y., Grydeland, H., Richardson, G., Westlye, L. T., Cooper Roddey, J., Hagler, D. J., Jr., Due-Tønnessen, P., Holland, D., & Fjell, A. M. (2013). Brain development and aging: Overlapping and unique patterns of change. *NeuroImage*, 68, 63–74. <https://doi.org/10.1016/j.neuroimage.2012.11.039>
- Topiwala, A., Allan, C. L., Valkanova, V., Zsoldos, E., Filippini, N., Sexton, C., Mahmood, A., Fook, P., Singh-Manoux, A., Mackay, C. E., Kivimäki, M., & Ebmeier, K. P. (2017). Moderate alcohol consumption as risk factor for adverse brain outcomes and cognitive decline: Longitudinal cohort study. *BMJ*, 357, j2353. <https://doi.org/10.1136/bmj.j2353>
- Vaishnavi, S. N., Vlassenko, A. G., Rundle, M. M., Snyder, A. Z., Mintun, M. A., & Raichle, M. E. (2010). Regional aerobic glycolysis in the human brain. *Proceedings of the National Academy of Sciences of the United States of America*, 107(41), 17757–17762. <https://doi.org/10.1073/pnas.1010459107>
- van Buuren, S., & Groothuis-Oudshoorn, K. (2011). Mice: Multivariate imputation by chained equations in R. *Journal of Statistical Software*, 45(3), 1–67. <https://doi.org/10.18637/jss.v045.i03>
- Wertz, J., Caspi, A., Ambler, A., Broadbent, J., Hancox, R. J., Harrington, H., Hogan, S., Houts, R. M., Leung, J. H., Poulton, R., Purdy, S. C., Ramrakha, S., Rasmussen, L. J. H., Richmond-Rakerd, L. S., Thorne, P. R., Wilson, G. A., & Moffitt, T. E. (2021). Association of history of psychopathology with accelerated aging at midlife. *JAMA Psychiatry*, 78(5), 530–539. <https://doi.org/10.1001/jamapsychiatry.2020.4626>
- Wierenga, L. M., Doucet, G. E., Dima, D., Agartz, I., Aghajani, M., Akudjedu, T. N., Albajes-Eizagirre, A., Alnæs, D., Alpert, K. I., Andreassen, O. A., Anticevic, A., Asherson, P., Banaschewski, T., Bargallo, N., Baumeister, S., Baur-Streubel, R., Bertolino, A., Bonvino, A., Boomsma, D. I., & Tamnes, C. K. (2022). Greater male than female variability in regional brain structure across the lifespan. *Human Brain Mapping*, 43, 470–499. <https://doi.org/10.1002/hbm.25204>
- Williams, D. R., & Sternthal, M. (2010). Understanding racial-ethnic disparities in health: Sociological contributions. *Journal of Health and Social Behavior*, 51(1\_suppl), S15–S27. <https://doi.org/10.1177/0022146510383838>
- Yetton, B. D., McDevitt, E. A., Cellini, N., Shelton, C., & Mednick, S. C. (2018). Quantifying sleep architecture dynamics and individual differences using big data and Bayesian networks. *PLoS One*, 13(4), e0194604. <https://doi.org/10.1371/journal.pone.0194604>
- Zhou, X., Wu, T., Yu, J., & Lei, X. (2017). Sleep deprivation makes the young brain resemble the elderly brain: A large-scale brain networks study. *Brain Connectivity*, 7(1), 58–68. <https://doi.org/10.1089/brain.2016.0452>
- Zielinski, M. R., McKenna, J. T., & McCarley, R. W. (2016). Functions and mechanisms of sleep. *AIMS Neuroscience*, 3(1), 67–104. <https://doi.org/10.3934/Neuroscience.2016.1.67>

## SUPPORTING INFORMATION

Additional supporting information can be found online in the Supporting Information section at the end of this article.

**How to cite this article:** Sanford, N., Ge, R., Antoniadou, M., Modabbernia, A., Haas, S. S., Whalley, H. C., Galea, L., Popescu, S. G., Cole, J. H., & Frangou, S. (2022). Sex differences in predictors and regional patterns of brain age gap estimates. *Human Brain Mapping*, 43(15), 4689–4698. <https://doi.org/10.1002/hbm.25983>