


# Retrospective Analysis of the Efficacy and Safety of Endoscopic Spinal Tuberculosis Focus Removal versus Posterior Pedicle Lesion Removal, Bone Grafting, and Internal Fixation Combined with Drug Chemotherapy for Thoracolumbar Tuberculosis

Tuerhongjian Abudurexiti<sup>1,2,\*</sup>, Abuduwpuer Haibier<sup>1,2,\*</sup> , Alimujiang Yusufu<sup>1,2,\*</sup>, Kutiluke Shoukeer<sup>1,2,\*</sup>, Hang Lin<sup>1,2</sup>

<sup>1</sup>Department of Spine surgery, The Sixth Affiliated Hospital of Xinjiang Medical University, Orthopaedic Hospital of Xinjiang Uygur Autonomous Region, Urumqi, People's Republic of China; <sup>2</sup>Xinjiang Medical University, Urumqi, Xinjiang Uygur Autonomous Region, People's Republic of China

\*These authors contributed equally to this work

Correspondence: Tuerhongjian Abudurexiti, Email 267661815@qq.com

**Objective:** This study aims to investigate the clinical efficacy of endoscopic spinal tuberculosis focus removal, posterior pedicle lesion removal, bone grafting, and internal fixation combined with drug chemotherapy in treating thoracolumbar tuberculosis. It also seeks to summarize strategies for preventing complications and provide a reference for clinical treatment.

**Methods:** We retrospectively analyzed 105 patients with spinal tuberculosis treated in our hospital from January 2018 to December 2022. Patients were divided into two groups: Group A (n=38), who underwent endoscopic spinal tuberculosis focus removal, and Group B (n=67), who underwent posterior pedicle lesion removal, bone grafting, and internal fixation. All patients received preoperative quadruple anti-tuberculosis drug chemotherapy (Isoniazid, Rifampicin, Pyrazinamide, Ethambutol) for 2–4 weeks. We recorded and compared parameters such as operation time, intraoperative blood loss, postoperative drainage, recovery time, hospital stay, blood transfusion, and complications. We also compared pre- and postoperative lumbar VAS, ODI, erythrocyte sedimentation rate, C-reactive protein, Procalcitonin, D-Dimer, Neutrophil to Lymphocyte ratio, hemoglobin, total protein, and Cobb angle to evaluate kyphotic deformity and correction.

**Results:** Preoperative data including age, sex, body mass index, segment involvement, past medical history, smoking history, preoperative erythrocyte sedimentation rate, C-reactive protein, Procalcitonin, D-Dimer, Neutrophil to Lymphocyte ratio, hemoglobin, total protein, lumbar VAS score, lumbar ODI score, and spinal Cobb's angle showed no significant difference between the groups ( $P>0.05$ ). Main postoperative indicators revealed that Group A had significantly lower lumbar VAS scores, higher hemoglobin and total protein levels, and a lower recurrence rate than Group B at the last follow-up ( $P<0.05$ ). Secondary postoperative indicators showed that Group A required significantly less blood transfusion, had shorter operative time, less intraoperative blood loss, shorter postoperative hospitalization time, and lower Cobb Angle than Group B ( $P<0.05$ ).

**Conclusion:** Endoscopic spinal tuberculosis focus removal can achieve comparable safety to posterior pedicle lesion removal, bone grafting, and internal fixation, with shorter operation time, less intraoperative bleeding, lower postoperative recurrence rate, and less postoperative drainage. This method can effectively improve blood sedimentation, lumbar function, restore Cobb angle, and reduce pain, making it worthy of promotion and application.

**Keywords:** spinal tuberculosis, focus clearance, infectious diseases of spine, drug chemotherapy

## Introduction

Tuberculosis (TB) is a chronic, non-specific infectious disease caused by *Mycobacterium tuberculosis*.<sup>1</sup> Each year, over 8 million new TB cases and 1.3 million deaths are reported. Despite a declining incidence due to increased emphasis and standardization of treatment, China remains one of the countries with the highest tuberculosis burden worldwide.<sup>2</sup> According to World Health Organization (WHO) data, the annual number of tuberculosis cases reported in China accounts for approximately 10% of the global total.<sup>3,4</sup>

Spinal tuberculosis is the most common type of extrapulmonary TB, with thoracolumbar tuberculosis being the most prevalent form, accounting for 50% of osteotuberculosis cases. Thoracolumbar tuberculosis can significantly impact health and quality of life, causing pain and neurological dysfunction. It is more common in the elderly due to factors such as decreased immune function, weakened resistance, and the presence of chronic diseases. However, treating older patients is challenging, and the long postoperative rehabilitation period poses significant challenges to clinical treatment.<sup>5</sup>

Surgical strategies for treating spinal TB include thorough removal of infected TB foci, performing standardized and effective anti-TB therapy, facilitating functional recovery, and rebuilding the stability of the spine. Traditional thoracolumbar tuberculosis surgery involves open surgery to expose the patient's spine through a large incision and remove the infected vertebra and intervertebral disc tissue to achieve a thorough treatment effect.<sup>6</sup> Although traditional posterior pedicle lesion removal, bone grafting, and internal fixation are suitable for a variety of different types and severity of thoracolumbar tuberculosis cases, allowing for flexible surgical design according to individual conditions and lesion characteristics, they result in large trauma and severe postoperative pain, leading to a long rehabilitation cycle.<sup>7,8</sup>

In contrast, endoscopic spinal tuberculosis focus removal combined with medical chemotherapy is an emerging minimally invasive surgical approach.<sup>9</sup> This technique, based on medical therapy, involves entering the patient's thoracic or lumbar region through small skin incisions using a percutaneous endoscopic technique. Through endoscopy, doctors can directly visualize the infected vertebrae and intervertebral discs, and use special tools to remove, lavage, and drain the lesions.<sup>10</sup> Compared with posterior pedicle lesion removal, bone grafting, and internal fixation, this method has the advantages of being minimally invasive, causing less trauma, having a short rehabilitation period, and reducing the risk of postoperative pain and complications.

In this study, we treated 105 patients with endoscopic spinal tuberculosis focus removal and posterior pedicle lesion removal to investigate the differences in the efficacy and safety of these two treatments in thoracolumbar patients.

## Objects and Methods

### Design

Retrospective cohort study

### Time and Location

This study was conducted in the Spine Surgery Department at the Sixth Affiliated Hospital of Xinjiang Medical University from January 2018 to December 2022.

### Object

The Spine Surgery Department of the Sixth Affiliated Hospital of Xinjiang Medical University treated 105 patients with thoracolumbar tuberculosis using endoscopic spinal tuberculosis focus removal and posterior pedicle lesion removal, bone grafting, and internal fixation from January 2018 to December 2022. Patients were divided into two groups according to the different surgical methods: posterior pedicle lesion removal, bone grafting, and internal fixation (n=67) and endoscopic spinal tuberculosis focus removal (n=38). The study was reviewed and approved by the Ethics Committee of the Sixth Affiliated Hospital of Xinjiang Medical University.

### Inclusion Criteria

①Patients with a history of tuberculosis, clinical manifestations, laboratory and imaging examinations suggestive of thoracolumbar tuberculosis; ②intractable low back pain, no relief after antituberculous drug treatment; ③severe or

progressive spinal nerve damage; ④ imaging suggesting obvious epidural abscess, single segment lesion; ⑤ severe bone destruction, spinal instability; ⑥ patients with a follow-up time of at least 6 months and those with complete follow-up data.

## Exclusion Criteria

① Patients with active tuberculosis (such as pulmonary tuberculosis, enteric tuberculosis, etc.); ② spinal diseases other than spinal tuberculosis, such as spinal intervertebral disc herniation, tumor, infection, fracture, etc.; ③ lesions involving 2 or more segments; ④ patients unable to tolerate the surgery.

## Diagnostic Criteria for Spinal Tuberculosis

The patient had previous or existing tuberculosis of other sites, with clinical manifestations including low-grade fever, night sweats, weight loss, pain at the site of spinal lesion, and percussion pain. Preoperative imaging showed disc destruction, the presence of bone sequestrum, abscess, and compressive myelopathy. The laboratory inspection shows that CRP, ESR, tuberculin test, and other indicators are abnormal. Tuberculous granulation tissue or caseous necrosis were found in postoperative pathology.

## Surgical Method

### Preoperative Preparation

In both groups, a detailed medical history was taken and a physical examination was performed. Relevant X-rays (including thoracic or lumbar side, dynamic level, etc.), CT, MRI, and other auxiliary examinations were conducted to evaluate the patient's systemic condition and limb function status. For hypertensive patients, blood pressure was controlled below 160/100mmHg. For diabetic patients, fasting blood glucose was controlled within 8 mmol/L, post-prandial blood glucose within 10 mmol/L, and urinary glucose was controlled at + ~ + +. Drugs that may affect the study (eg, anticoagulant drugs) were suspended. Patients were instructed to rest to reduce the damage caused by spinal instability and ensure good nutrition before surgery. Chemotherapy regimen: After initial preoperative diagnosis of spinal tuberculosis, oral Isoniazid 0.3g/d, Rifampicin 0.45g/d, Ethambutol 0.75g/d, Pyrazinamide 0.75g/d were administered for at least 2–4 weeks. When the patient's appetite improved, without low-grade fever or night sweats, protein levels improved, chest radiograph and sputum culture results were negative, and laboratory tests of CRP <20mm/h, ESR <50mm/h or both were significantly decreased, elective surgical treatment was considered. The condition and all risks were explained before surgery, and the consent form was signed.

## Surgery Method

### Posterior Pedicle Lesion Removal, Bone Grafting and Internal Fixation

After patient anesthesia, the prone position was taken. The patient's abdomen was placed on a horseshoe pad, the surgical area was disinfected, and a sterile drape was applied. Cefuroxime sodium 2g was administered intravenously. A posterior median incision was made to separate the tissue layer by layer, expose the lesion, and completely remove it. The residual disc, nucleus pulposus, and endplate cartilage were scraped for full decompression. Screws were implanted, attachment rods were mounted, and intervertebral bone grafting was performed. The wound cavity was washed with a washing gun + 3L bag. Anti-tuberculosis drugs (streptomycin 1g + Isoniazid 300mg) and 2 drainage tubes were placed at the lesion, and the incision was closed layer by layer. Specific implant materials are shown in [Table 1](#).

### Endoscopic Spinal Tuberculosis Focus Removal

All patients in Group A underwent intervertebral graft removal. As an example, for patients with tuberculosis at the L3 and L4 levels, general anesthesia was administered through airway intubation, and they were positioned prone. The C-arm X-ray machine was utilized to determine the body surface projection of the lesion space. The right intervertebral foramen at the L3,4 disc level, located 9 cm from the spine's midline, was selected as the needle injection point. The puncture needle was angled at 20–35 degrees relative to the trunk towards L4, facilitating the expansion of the soft tissue channel along the needle to the spinal canal. This process enabled the visualization and treatment of the lumbar tuberculosis focus, including spinal canal decompression, nerve root adhesion release, intervertebral disc radiofrequency

**Table 1** Material Characteristics of the Implant

Product name	Interbody fusioN
<b>Manufacturer</b>	Tianjin ZhengTian Medical Instrument Co.,Ltd
<b>Specification Model</b>	Posterior Lumbar Interbody Fusion (PLIF)
<b>Model</b>	RP-01
<b>Approval Number</b>	2200085869
<b>Registration Number</b>	20213130654
<b>Structure and composition/main constituents</b>	Interbody cage includes lumbar posterior cage (PLIF), lumbar posterior cage (TLIF), anterior cervical cage, and lumbar lateral anterior cage (OLIF). The fuse device consists of the main body and the developing filament. The main material of the fuse is made of polyether ether ketone (PEEK-OPTIMA LTI) material conforming to YY/T0660 standard, embedded with tantalum developing wire, which is made of R05200 pure tantalum material conforming to ISO 13782 standard. Delivery in a sterilized and non-sterilized form with a sterilization period of 5 years.
<b>Scope of application</b>	Combined with spinal fixation system, it is suitable for interbody fusion in spinal traumatic injury, degenerative lesions and abnormal lesions.

ablation, and intervertebral space catheterization. Under microscopic guidance, turbid purulent secretions and caseous necrotic scar tissue were cleared. Dead bone was removed, and the lesions were thoroughly cleaned. Complete relief was provided to the front edge of the nerve and dural sac. After the lesion removal, a suitable autologous bone graft, typically harvested from the posterior end of the anterior superior iliac spine, was embedded between the vertebrae. Alternatively, the graft bed was treated with mixed rifampicin. The effectiveness of the bone graft fixation was verified by X-ray, ensuring satisfactory positioning. During the operation, the surgical field was continuously irrigated with an isoniazid diluent. Tissue samples from the lesion were collected for bacterial culture, drug sensitivity testing, and pathological examination. A 12 double-lumen tube was placed at the lesion's center. After confirming the position through fluoroscopy, a subcutaneous tunnel was established, the tube secured with stitches, and the area bandaged. Specific implant materials are detailed in Table 2.

### Postoperative Management

① An intravenous infusion of antibiotics was administered for 24 hours postoperatively to prevent infection, along with nonsteroidal anti-inflammatory drugs to alleviate postoperative pain. ② Drainage from the operative area was monitored and considered adequate if less than 30mL/24 hours. ③ Patients were allowed to engage in ground activities wearing a waist brace 1–2 days after the surgery. ④ Patients continued to take a regular oral chemotherapy regimen of Isoniazid 0.3g/d, Rifampicin 0.45g/d, Pyrazinamide 30mg/(kg·d), and Ethambutol 15 mg/(kg·d) for 9–12 months. Liver and kidney function were regularly monitored during this period. ⑤ Before discharge, patients underwent X-ray and CT scans to evaluate the bone grafting and the position of the fixation device. ⑥ MRI was performed before discharge to evaluate the

**Table 2** Complete Set of Surgical Instruments for Vertebroplasty

Product Name	Disposable RF Plasma Surgical Electrode (Blade)
<b>Model</b>	G21S21
<b>Specification</b>	03
<b>Approval Number</b>	22922053
<b>Registration Number</b>	20172011018
<b>Manufacturing enterprise</b>	Beijing JesHuizhong Technology Co., LTD
<b>Structure and composition/main constituents</b>	The surgical electrode (blade) consists of bipolar plasma blade, knife stem, insulated handle and lead (patient cable)
<b>Scope of application</b>	Use with a radiofrequency plasma surgery host for surgical soft tissue dissection, resection, ablation, hemostasis, and drying

decompression and lesion removal.⑦ Waist brace protection was continued for 3 months postoperatively.⑧ Liver and kidney function were regularly reviewed after discharge.

## Postoperative Index Evaluation

### Visual Analogue Scale (VAS)

The VAS was scored on the day of admission, on the fifth day after surgery, and at the last follow-up visit (within 1 year), and the results were compared. The patient's analgesic regimen during the hospitalization was oral Paracetamol and Dihydrocodeine Tartrate Tablets. Scoring criteria: total score: 10; specific scoring details are shown in [Figure 1](#). During the recording process, the patient indicated the pain on a graduated ruler, which was evaluated by the physician.

### Oswestry Disability Index (ODI)

Composed of 10 questions, including the intensity of the pain, life care, content, walking, sitting, standing, sleep, sex, social life, tourism, 10 aspects, each six options, each question of the highest score of 5 points, choose the first option score 0 points, choose the last option score 5 points, if there are 10 questions do a question and answer. The scoring method is the actual score / 50 (highest possible score) 100%, if there is a question not answered, the scoring method is: the actual score / 45 (highest possible score) 100%, if the higher the dysfunction, the more serious.

### Intraoperative Blood Loss

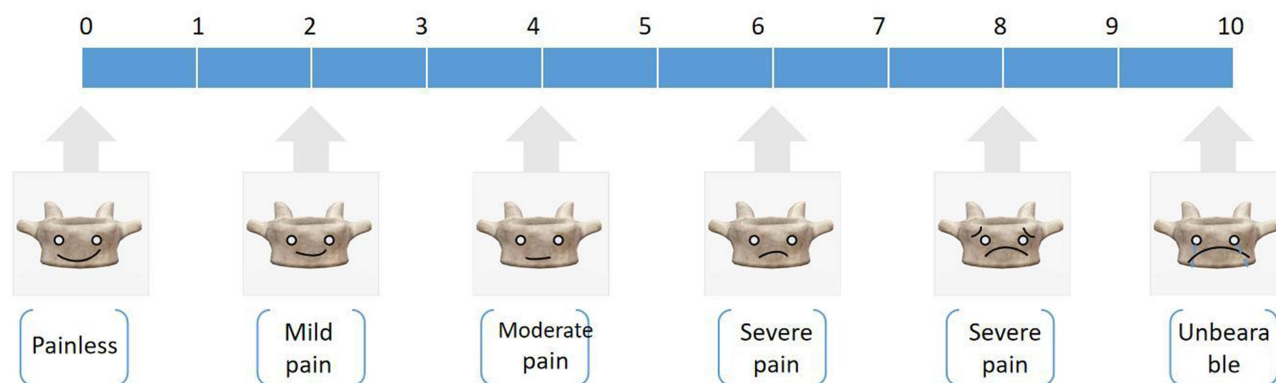
This was calculated by adding the weight of the postoperative gauze to the blood volume in the aspirator, then subtracting the volume of irrigation fluid. Intraoperative bleeding was considered significant if 30mL could completely wet the gauze (180mL), or if the content of the aspirator minus the amount of normal saline used for washing was significant.

### Blood Transfusion Requirements

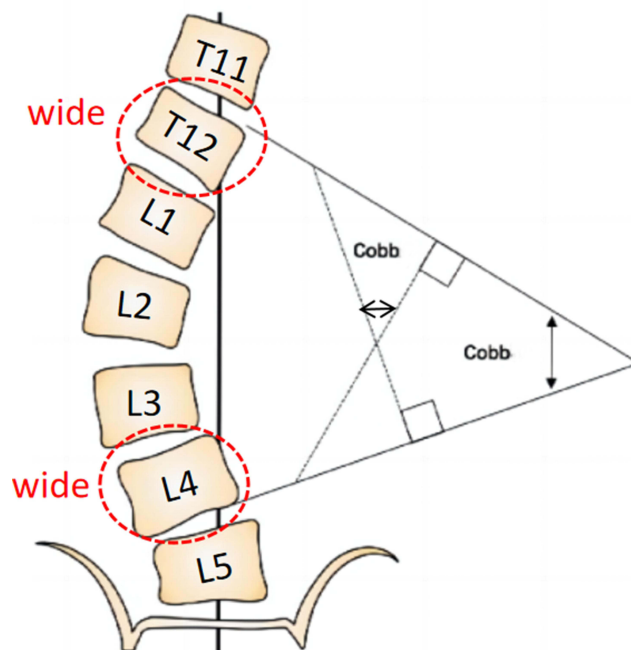
Blood transfusion was administered if the postoperative hemoglobin level was less than 70g/L, or if it was 70g/L with uncomfortable symptoms such as dizziness, pallor, and weakness. The hemoglobin level was reassessed 6 hours after transfusion, and further blood transfusion was considered using the same criteria.

### Cobb Angle

The Cobb angle is the angle between the vertical line of the upper edge of the superior vertebra and the vertical line of the lower edge of the inferior vertebra. If the upper and lower edges of the vertebra are not clear, the connection between the upper and lower edge of the pedicle should be selected, and then the angle of the vertical line is the Cobb angle. The Cobb angle is one of the reference standards for the size of the scoliosis angle and the severity of scoliosis, as shown in [Figure 2](#). Pre-operative and postoperative Cobb angle were included in this study.



**Figure 1** The VAS scoring criteria for low-back pain.



**Figure 2** Cobb angle method for waist measurement.

**Notes:** Apply the method of measuring Cobb angle on the X tablet.

## General Information

1. Clinical data from 105 patients with thoracic and lumbar tuberculosis who underwent endoscopic spinal tuberculosis focus removal and posterior pedicle lesion removal, bone grafting, and internal fixation from January 2018 to December 2022 were collected for a retrospective study. Patients were divided into two groups based on the two different procedures: 1) posterior pedicle lesion removal, bone grafting, and internal fixation group (n=67), and 2) minimally invasive surgery group (n=38).
2. The efficacy of posterior pedicle lesion removal, bone grafting, and internal fixation, and endoscopic spinal tuberculosis focus removal was statistically analyzed. General data of the two groups included patient gender, age, body mass index, affected segments, smoking history, and past history.

## Observed Indicators

### Primary Outcome Measures

Preoperative, 1 day postoperative, and final postoperative follow-up erythrocyte sedimentation rate, C-reactive protein, Procalcitonin, D-Dimer, Neutrophil to Lymphocyte ratio, preoperative hemoglobin and preoperative protein, preoperative, 1 day postoperative, 3 months postoperative, and final postoperative follow-up lumbar lumbago VAS score, ODI score, and spinal Cobb angle.

### Secondary Outcome Measures

Operation time, intraoperative blood loss, postoperative drainage, postoperative time, postoperative complications (dural tear, lower limb intermuscular vein thrombosis, lower limb deep vein thrombosis, incision infection, cerebrospinal fluid leakage, internal loosening, skin margin necrosis, sinus formation, and total complication rate), blood transfusion rate, and blood transfusion volume, etc.

## Statistical Methods

Data analysis was performed using the SPSS 26.0 statistical software. Quantitative data are described by the mean  $\pm$  standard deviation ( $X \pm S$ ), and qualitative data are represented by the number of cases. Comparison of the quantitative

data was performed using the independent samples *t*-test. For cases not eligible for *t*-test, rank sum test was used. Comparison of the qualitative data was performed using the  $\chi^2$  test. A  $P < 0.05$  was considered as statistically significant.

Data analysis was performed using the SPSS 26.0 statistical software. Quantitative data are described by the mean  $\pm$  standard deviation ( $X \pm S$ ), and qualitative data are represented by the number of cases. Comparison of the quantitative data was performed using the independent samples *t*-test. For cases not eligible for *t*-test, rank sum test was used. Comparison of the qualitative data was performed using the  $\chi^2$  test. A  $P < 0.05$  was considered statistically significant.

## Results

### Analysis of the Number of Participants

Included in the study were 105 patients with thoracolumbar tuberculosis who received both endoscopic spinal tuberculosis focus removal and posterior pedicle lesion removal, bone grafting, and internal fixation. Patients were divided into 2 groups according to the surgical method: 1) posterior pedicle lesion removal, bone grafting, and internal fixation group ( $n=67$ ), and 2) minimally invasive surgery group ( $n=38$ ). Data from 2 cases in Group A and 3 in Group B.

Experimental flow chart The flow chart of the two groupings is shown in Figure 3.

### Comparison of Preoperative Data Between the Two Groups

In both groups, there were no statistically significant differences ( $P > 0.05$ ) in age, gender, body mass index, segment involvement, past history (cardiovascular and cerebrovascular, respiratory system, endocrine system, metabolic diseases, and history of tuberculosis), smoking history, preoperative erythrocyte sedimentation rate, C-reactive protein,

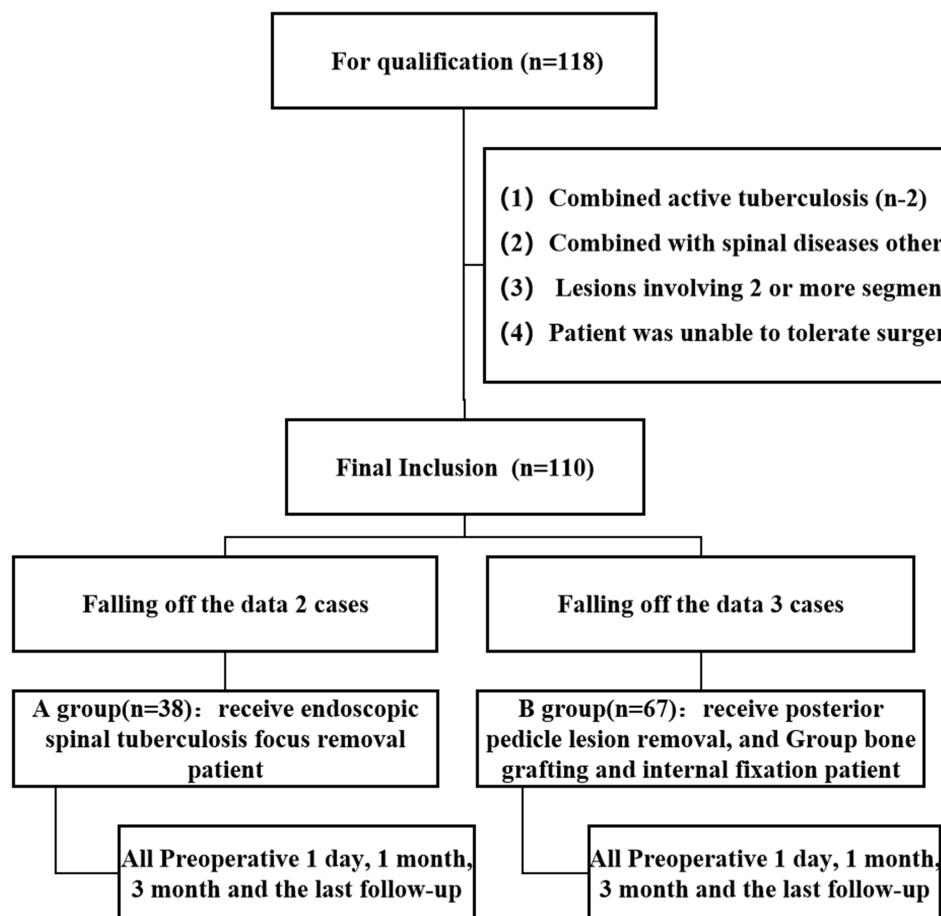


Figure 3 Flow chart of test grouping.

Procalcitonin, D-Dimer, Neutrophil to Lymphocyte ratio, hemoglobin, total protein, lumbar VAS score, lumbar ODI score, and spinal Cobb angle. Specific data are shown in Table 3.

## Postoperative VAS and ODI Scores in Both Groups

There was no significant difference in low back VAS scores and ODI scores between the two groups at 1 month and 3 months postoperatively ( $P > 0.05$ ). However, at the last follow-up, the low back VAS score in the minimally invasive surgery group was significantly lower than that in the posterior pedicle lesion removal, bone grafting, and internal fixation group ( $t=5.124$ ,  $P < 0.05$ ). This suggests that the minimally invasive surgery group may have a better long-term prognosis. Specific data are shown in Table 4.

## Comparison of Indexes at 1 Day and Last Follow-Up Test in the Two Groups

There was no significant difference in all the test indices included in this study between the two groups on the first day after surgery ( $P > 0.05$ ). However, at the last postoperative follow-up, the minimally invasive surgery group had significantly higher hemoglobin and total protein levels than the posterior pedicle lesion removal, bone grafting, and internal fixation group ( $t=6.081/0.565$ ,  $P < 0.05$ ), as shown in Table 5. This indicates that the minimally invasive surgery group recovered hemoglobin and total protein levels more quickly.

## Analysis of the Postoperative Complications in the Two Groups

The postoperative incidence of dural laceration, calf muscle vein thrombosis, deep vein thrombosis, infections, cerebrospinal fluid leakage, internal fixation loosening, skin necrosis, and sinus formation were not significantly different ( $P > 0.05$ ) in both groups. The rates of internal fixation loosening, skin necrosis, and sinus formation were also not significantly different ( $P > 0.05$ ). However, the postoperative recurrence rate in the posterior pedicle lesion removal, bone grafting, and internal

**Table 3** Basic Preoperative Data of the Two Groups

Items	A group (n=38)	B group (n=67)	X <sup>2</sup> /t	P
Age ( $\bar{x} \pm s$ )	74.02±6.31	70.02±17.11	32.731	0.090
Sex(n) Male/Female	17/21	34/33	0.351	0.554
BMI ( $\bar{x} \pm s$ , kg/m <sup>2</sup> )	24.48±4.20	23.16±3.50	1.853	0.087
Tuberculosis site(n)			1.411	0.703
Thoracic vertebra	0	2		
Thoracolumbar	1	3		
lumbar vertebra	31	52		
Lumbosacrum	6	10		
Cardiovascular and cerebrovascular(n)	18	33	0.035	0.853
Respiratory system(n)	12	27	0.790	0.374
Endocrine system(n)	18	32	0.001	0.969
Metabolic diseases(n)	7	18	0.953	0.329
History of tuberculosis(n)	12	27	0.790	0.374
Erythrocyte sedimentation Rate	49.26±22.77	46.28±20.24	0.058	0.490
C-reactive protein	36.43±42.87	30.99±34.52	4.255	0.479
Procalcitonin	0.28±0.09	0.43±1.20	1.300	0.452
D-Dimer (mg/L)	1.62±0.85	1.35±1.85	2.670	0.394
Neutrophil to Lymphocyte ratio	47.00±21.22	49.41±20.17	0.609	0.565
Hemoglobin (g/L)	122.15±17.02	129.14±20.33	0.238	0.076
Total protein (g/L)	47.44±18.89	42.25±11.87	22.530	0.132
Preoperative lumbar VAS score (score)	7.73±1.36	7.32±1.41	1.162	0.154
Preoperative lumbar ODI score (%)	66.26±8.92	68.56±9.75	0.067	0.233
Preoperative spinal Cobb angle (°)	15.03±0.83	15.04±0.84	0.077	0.989

**Notes:** The continuous value was given as the mean and the standard deviation. BMI Body mass index=weight/height<sup>2</sup>.

**Abbreviations:** VAS, visual analogue scale; ODI, Oswestry disability index.



**Table 4** Postlumbar VAS and ODI Scores in Both Groups

Items	Follow-up Time	A Group (n=38)	B Group (n=67)	X <sup>2</sup> /t	P
Low back VAS score ( $\bar{x}\pm s$ , score)	1 month	3.31±1.61	3.38±1.37	2.015	0.808
	3 month	3.00±0.98	2.56±1.22	3.762	0.065
	Last follow-up	1.36±1.10	2.00±0.98	5.124	<b>0.003*</b>
Low back ODI score ( $\bar{x}\pm s$ , %)	1 month	36.57±11.79	35.71±11.68	0.001	0.719
	3 month	26.10±8.76	26.62±9.94	0.803	0.788
	Last follow-up	21.97±6.34	22.80±7.64	2.780	0.571

**Notes:** The continuous value was given as the mean and the standard deviation. \*Bold text represents a statistically significant difference between the two groups.

**Abbreviations:** VAS, visual analogue scale; ODI, Oswestry disability index.

**Table 5** Test Tested at 1 Day and Last Follow-Up in the Two Groups

Items	Follow-up Time	A Group (n=38)	B Group (n=67)	X <sup>2</sup> /t	P
1 day after surgery Inspection index	Erythrocyte sedimentation Rate	49.44±21.46	43.67±23.26	1.138	0.212
	C-reactive protein	84.79±40.40	88.43±80.19	12.428	0.795
	Procalcitonin	0.24±0.06	0.23±0.07	0.311	0.699
	D-Dimer	5.15±3.17	4.10±2.89	0.815	0.100
	Neutrophil to Lymphocyte ratio	52.72±26.45	56.22±29.49	1.385	0.546
	Hemoglobin	112.71±23.90	99.00±16.07	10.839	0.002
	Total protein	56.50±8.50	56.64±5.63	2.570	0.923
The last time after surgery Inspection index	Erythrocyte sedimentation Rate	27.47±14.49	34.65±23.12	19.336	0.087
	C-reactive protein	69.41±53.35	49.99±51.47	0.204	0.070
	Procalcitonin	0.25±0.07	0.24±0.07	0.021	0.518
	D-Dimer	4.70±2.61	4.80±3.03	1.297	0.867
	Neutrophil to Lymphocyte ratio	51.55±22.94	47.88±23.49	0.416	0.440
	Hemoglobin	109.82±20.15	97.07±15.57	6.081	<b>0.001*</b>
	Total protein	62.05±6.97	58.67±8.03	0.565	<b>0.026*</b>

**Notes:** The continuous value was given as the mean and the standard deviation. \*Bold text represents a statistically significant difference between the two groups.

fixation group (10 cases) was significantly higher than that in the minimally invasive surgery group (1 case), with a significant difference ( $t=3.908$ ,  $P=0.048$ ) (see Table 6). These data suggest that endoscopic removal of spinal tuberculosis foci has superior therapeutic efficacy, while both groups demonstrated significant clinical outcomes.

## Comparison of Transfusion Rate and Volume of the Two Groups

In the posterior pedicle lesion removal, bone grafting, and internal fixation group, 23 patients received transfusions during the perioperative period, with a transfusion rate of 34.3% and a volume of  $1.97\pm 2.38$  U. In the endoscopic spinal tuberculosis

**Table 6** Comparison of Postoperative Complications Between the Two Groups

Group	Dural Laceration	Muscular Calf Vein Thrombosis	DVT	Incision Infections	CSF leak	Internal Fixation Loose	Skin Necrosis	Sinus Formation	Postoperative Recurrent Rate
A group (n=38)	0	4	1	2	2	3	3	0	1
B group (n=67)	2	16	4	3	4	4	3	1	10
X <sup>2</sup>	1.143	2.804	0.596	0.033	0.022	0.144	0.526	0.573	3.908
P	0.258	0.094	0.440	0.856	0.881	0.704	0.468	0.449	<b>0.048*</b>

**Notes:** \*Bold text represents a statistically significant difference between the two groups.

**Abbreviations:** DVT, deep venous thrombosis; CSF leak, Cerebrospinal fluid leak.

focus removal group, 11 patients were transfused, with a rate of 28.9% and a volume of  $1.02 \pm 1.96$  U. The transfusion volume in the endoscopic group was significantly lower than in the posterior pedicle lesion removal, bone grafting, and internal fixation group, with a statistically significant difference ( $X^2=1.149$ ,  $P<0.05$ ) (see Table 7). However, the difference in transfusion rates between the two groups was not statistically significant ( $X^2=2.007$ ,  $P>0.05$ ) (see Table 7).

## Operation Time, Intraoperative Blood Loss, Postoperative Drainage Rate, Postoperative Drainage Time and Cobb Angle Were Compared in Both Group

There was no significant difference between the two groups ( $P>0.05$ ). The operation time in Group B was  $244.44 \pm 48.92$ , compared to  $216.18 \pm 45.10$  in Group A, with Group A having significantly less operation time ( $t=0.207$ ,  $P<0.05$ ). The intraoperative blood loss in Group B was  $273.58 \pm 149.49$ , compared to  $214.47 \pm 99.77$  in Group A, with Group A having significantly less blood loss ( $t=8.950$ ,  $P<0.05$ ). The postoperative drainage time in Group B was  $5.70 \pm 2.41$ , compared to  $3.47 \pm 1.57$  in Group A, with Group A having significantly less drainage time ( $t=2.996$ ,  $P<0.05$ ). The Cobb angle in Group B was  $9.81 \pm 1.66$ , compared to  $8.88 \pm 2.39$  in Group A, with Group A having a significantly smaller Cobb angle ( $t=8.218$ ,  $P<0.05$ ) (see Table 8 and Figure 4). These data suggest that Group A has a better safety profile.

Typical cases, see Figures 5–8.

## Discussion

### Summary of Evidence

Endoscopic removal of spinal tuberculosis foci is an emerging technique in the field of minimally invasive spinal surgery. Numerous studies have demonstrated its clinical efficacy in treating lumbar degenerative diseases.<sup>11–14</sup> In recent years, the broad application of this technique in clinical practice has led to an expansion of its surgical indications, extending beyond lumbar degenerative diseases. Currently, some researchers have begun to employ this technique in treating spinal infectious diseases such as epidural abscess,<sup>15</sup> purulent spondylitis,<sup>16</sup> and spinal tuberculosis.<sup>17</sup> Anti-tuberculosis drug chemotherapy remains the primary treatment method for thoracolumbar tuberculosis, often yielding positive results. The minimally invasive treatment methods for thoracolumbar tuberculosis mainly include CT-guided percutaneous catheter drainage, foraminal endoscopic lesion removal, percutaneous screw internal fixation technology, and channel-assisted small incision surgery.<sup>18,19</sup> The foraminal endoscopic technique, characterized by minimal trauma, reduced intraoperative

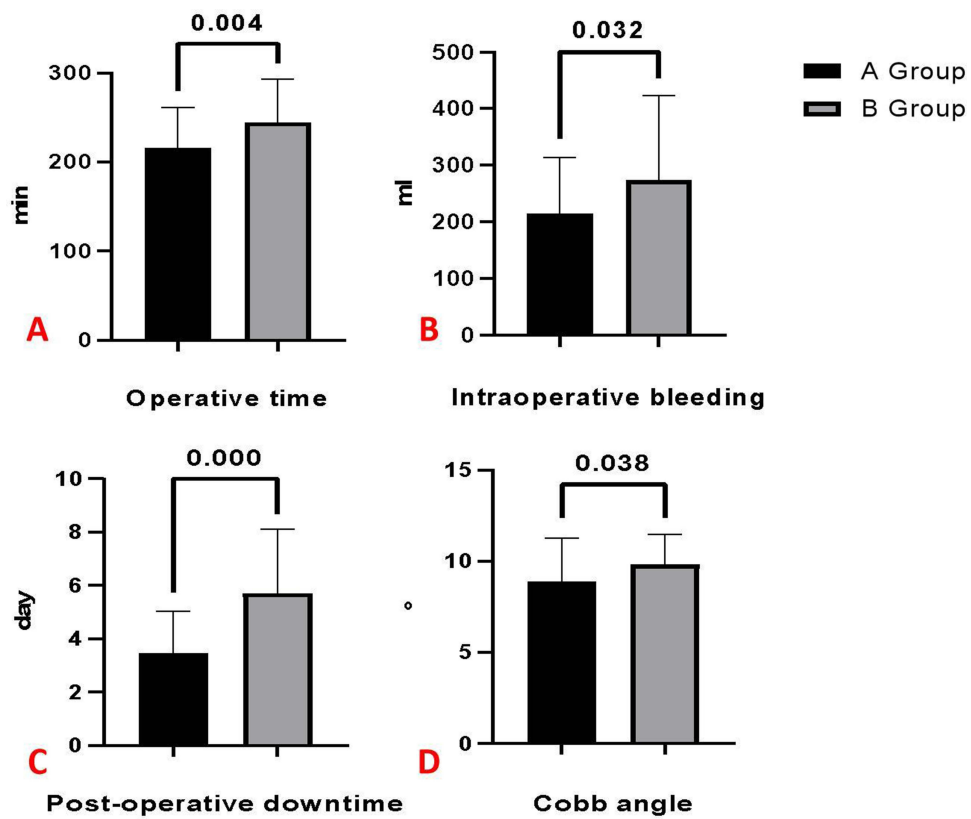
**Table 7** Comparison of Transfusion Rates and Transfusion Volume Between Two Groups

Group	Blood Transfusion Rate (%)	Blood Transfusion Quantity ( $\bar{x} \pm s$ , U)
A group (n=38)	11/28.9	$1.02 \pm 1.96$
B group (n=67)	23/34.3	$1.97 \pm 2.38$
$X^2/t$	2.007	1.149
P	0.367	<b>0.039*</b>

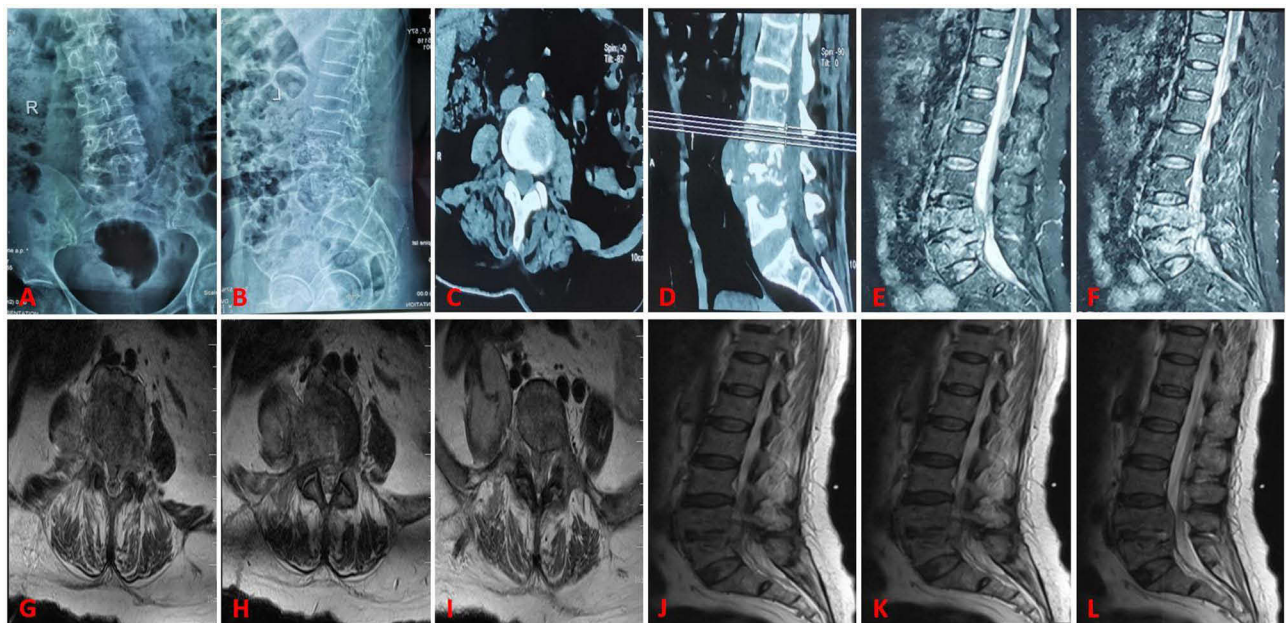
**Table 8** Comparison of Secondary Indicators Between the Two Patient Groups

Items	A Group (n=38)	B Group (n=67)	$X^2/t$	P
Operative time ( $\bar{x} \pm s$ , min)	$216.18 \pm 45.10$	$244.44 \pm 48.92$	0.207	<b>0.004*</b>
Intraoperative bleeding ( $\bar{x} \pm s$ , mL)	$214.47 \pm 99.77$	$273.58 \pm 149.49$	8.950	<b>0.032*</b>
Volume of drainage ( $\bar{x} \pm s$ , mL)	$173.94 \pm 52.22$	$189.70 \pm 74.66$	4.201	0.253
Post-operative downtime/ ( $\bar{x} \pm s$ , d)	$3.47 \pm 1.57$	$5.70 \pm 2.41$	2.996	<b>0.000*</b>
Cobb angle ( $\bar{x} \pm s$ , °)	$8.88 \pm 2.39$	$9.81 \pm 1.66$	8.218	<b>0.038*</b>

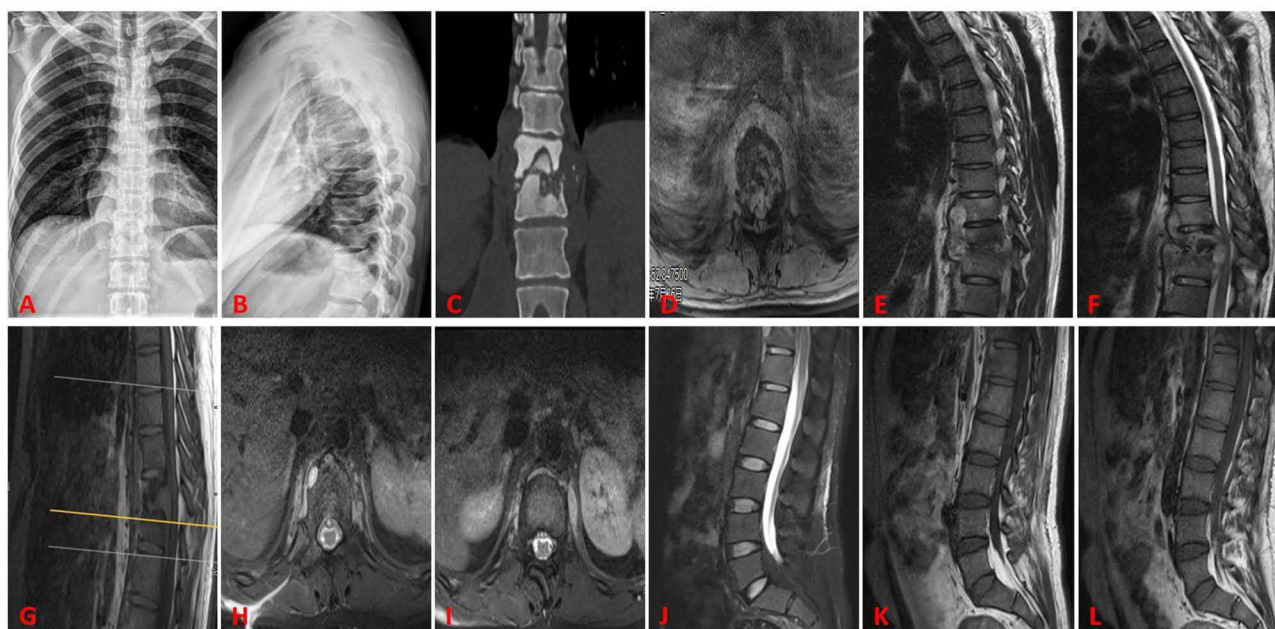
Notes: The continuous value was given as the mean and the standard deviation. \*Bold text represents a statistically significant difference between the two groups.



**Figure 4** Box plots of comparative secondary indicators in the two patient groups.  
**Notes:** (A); Operative time; (B) Intraoperative bleeding; (C) Post-operative downtime; (D); Cobb angle.

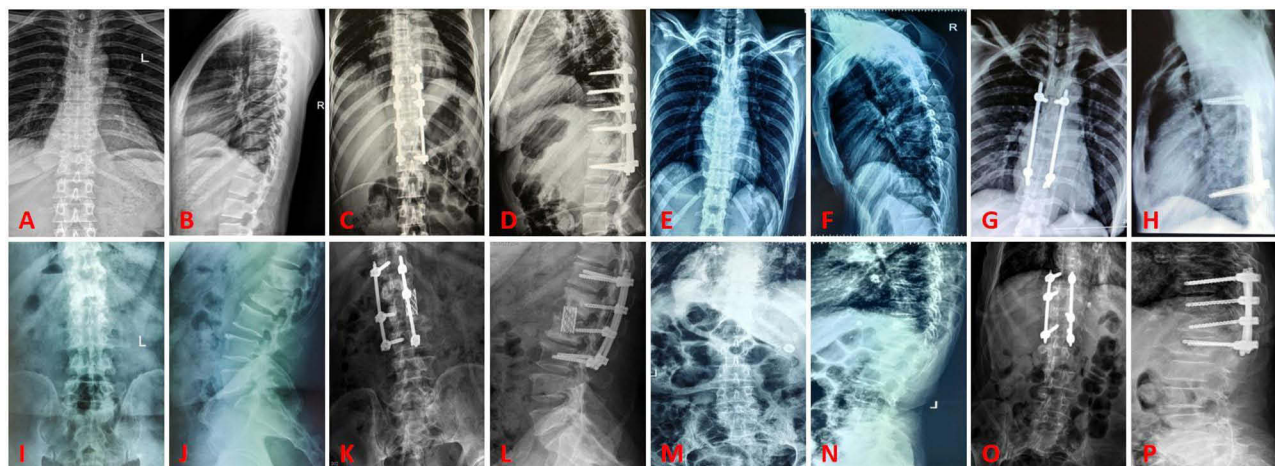


**Figure 5** Group A is a typical case ①.  
**Notes:** A 57-year-old female patient presented with limited mobility due to back pain for 4 months, worsening over the past month. She was diagnosed with lumbar 3-lumbar 5 spinal tuberculosis. A-B show the patient's preoperative X-ray, CT, and MRI scans. G-I: CT scans 1 week post-surgery; J-L: MRI scans 1 week post-surgery.



**Figure 6** Group A is a typical case ②.

**Notes:** A 43-year-old male patient was admitted with the primary complaint of “back pain for 1 year, numbness and weakness in both lower limbs for 1 month”. He was diagnosed with thoracic 11-thoracic 12 spinal tuberculosis. A-B show the patient’s preoperative X-ray, CT, and MRI scans. G-I: CT scans 1 week post-surgery; J-L: MRI scans 1 year post-surgery.

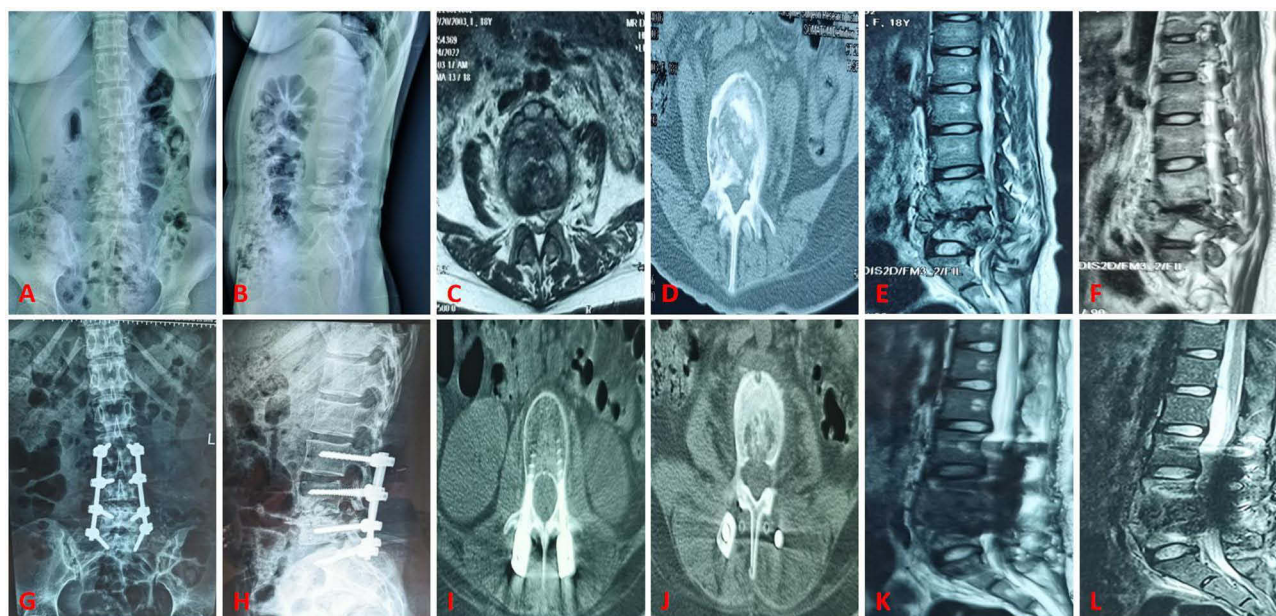


**Figure 7** Group B is a typical case ①.

**Notes:** A 34-year-old female patient was admitted with “low back pain and left lower limb pain for 1 year, worsening over the past 2 weeks”. She was diagnosed with thoracic 9-thoracic 12 spinal tuberculosis. A-B: Preoperative lateral X-ray; C-D: Postoperative lateral X-ray; A 66-year-old male patient presented with “low back pain for 6 months”. He was diagnosed with lumbar 1-lumbar 2 spinal tuberculosis. E-F: Preoperative X-ray; G-H: Postoperative X-ray; A 38-year-old female patient was admitted with “back pain for 1 year”. She was diagnosed with thoracic 6-thoracic 9 spinal tuberculosis. I-J: Preoperative anterior lateral X-ray; K-L: Postoperative anterior lateral X-ray; A 73-year-old patient presented with “back pain and right lower limb pain for 6 months”. He was diagnosed with lumbar 4-sacral 1 spinal tuberculosis. M-N: Preoperative X-ray; O-P: Postoperative X-ray.

bleeding, and a clear surgical field, was initially applied in the removal of the nucleus pulposus of lumbar disc herniation. With its continued development, it has been utilized in the treatment of spinal tuberculosis.<sup>18,20–23</sup>

In 2017, Korean scholar Eun et al<sup>24</sup> proposed using arthroscopy to provide vision in the observation channel, inserting minimally invasive discectomy instruments in the operating channel, and successfully applying it in the treatment of lumbar diseases. In recent years, endoscopic spinal tuberculosis focus removal has garnered the attention of spine physicians and has been widely used in spine-related diseases. This is because patients prefer minimally invasive surgery due to its reduced trauma,



**Figure 8** Group B is a typical case ②.

**Notes:** A 38-year-old female patient was admitted with the primary complaint of “low back pain and weakness associated with both lower limb pain for 2 months”. She was diagnosed with lumbar 4-lumbar 5 spinal tuberculosis. (A–F) Preoperative X-ray, CT, and MRI; G–L: Postoperative X-ray, CT, and MRI 3 days post-surgery.

pain, and postoperative complications. According to data from Fu Shuanyu et al,<sup>20</sup> the foraminal endoscopic technique was used to remove lesions in 12 cases of lumbar spinal tuberculosis. A large volume of streptomycin normal saline solution was used for washing, and calcium sulfate artificial bone was implanted into the intervertebral space. The stability of the spine was then reconstructed with percutaneous pedicle screw technology. This procedure can achieve the same curative effect as traditional open surgery, but it is more minimally invasive. The channel-assisted small incision technique uses the channel system to complete spinal canal decompression, discectomy, interbody graft fusion, and internal fixation under a limited surgical incision. Currently, this technique has been widely used in the treatment of lumbar degenerative diseases. Xue Haibin et al<sup>25</sup> applied the channel small incision technique to treat 56 patients with lumbar tuberculosis. At the final follow-up, all lesions were cured, bone grafts were fused, lumbar curvature was improved, and there were no patients with internal fixation failure, essentially restoring the patients to their pre-disease life and work conditions. In addition, our results also showed that patients undergoing minimally invasive surgery experienced less trauma, shorter operation time, less intraoperative blood loss, lower postoperative recurrence rate, and lower postoperative drainage rate. Minimally invasive puncture and drainage combined with local chemotherapy can effectively improve blood sedimentation and lumbar function, restore the Cobb angle, and provide a better long-term prognosis. In 2021, Kim et al’s team<sup>26</sup> successfully treated spinal tuberculosis with UBE debridement lesions and percutaneous screw instrumentation. Their study results confirmed that this technique is beneficial in diagnosing and treating spinal tuberculosis. A 2023 study by Wang Xiangbin’s team<sup>27</sup> treated 9 patients with debridement, decompression, interbody fusion, and percutaneous screw fixation under UBE. All patients had no complications such as recurrence, incision infection, dural tear, and cerebrospinal fluid leakage during the follow-up period. Wang Xiangbin’s team<sup>28</sup> used debridement, decompression, interbody fusion, and percutaneous screw fixation under UBE to treat 13 patients with Brucellosis spondylitis. The study data showed that all patients had no clinical symptoms, no local tenderness, and no percussion pain. Thirteen patients had a lordosis angle of  $47.18 \pm 6.88$ , and the lordosis angle was  $42.26 \pm 6.92$ , with a significant difference ( $P < 0.05$ ). Twelve patients reached grade I and one case reached grade II, with a fusion rate of 12/13. HSU et al<sup>29</sup> used UBE inferior discectomy and debridement for Salmonella spondylitis with an epidural abscess, and the patient had good postoperative results. The above research results prove that percutaneous endoscopic spinal tuberculosis focus removal as an adjuvant treatment for thoracolumbar tuberculosis has a definite initial clinical efficacy. It is a safe, feasible, and effective method, providing a new direction for minimally invasive surgery in the treatment of spinal tuberculosis.

## Implications for Future Research

This study is retrospective in nature. According to our analysis, there was no significant difference in safety between the two groups undergoing thoracolumbar tuberculosis surgery. However, significant differences were observed in operation time, surgical blood loss, postoperative time, spinal Cobb angle, blood transfusion, last follow-up lumbar VAS score, hemoglobin, and total protein. The case data of the patients included in the study is comprehensive, but the number of included studies is limited. Variations in surgical experience among different surgeons may influence the analysis results. Furthermore, the exploration of different surgical procedures for different segments of the spine could be a direction for future research. In recent years, with the continuous development of minimally invasive concepts, minimally invasive technology, which offers advantages such as less trauma, reduced intraoperative bleeding, quicker recovery, fewer complications, and shorter hospital stays, has been widely used in thoracolumbar surgery and has also been enriched and developed in the treatment of thoracolumbar tuberculosis. The disadvantages of minimally invasive surgery, including small correction angle, ease of losing angle, and surgical operation restrictions, have prevented its full popularization. Due to the shortage of blood inventory in the regional central blood stations, the development of some surgical procedures is limited, and many hospitals have not implemented related minimally invasive surgery. For the surgical treatment of thoracolumbar tuberculosis, standardized anti-tuberculosis drug treatment remains an important prerequisite. Anti-tuberculosis treatment 2–4 weeks before surgery is necessary, but the treatment duration should be adjusted according to the specific condition of the patient. Surgical treatment is an important auxiliary means, but the choice of surgical approach and method should be fully evaluated in the comprehensive situation of patients, and the surgeon should be adept at combining various methods to develop the optimal treatment plan.

## Analysis of Article Results

A total of 1105 patients were included in this study to compare the parameters of the endoscopic spinal tuberculosis focus removal and the posterior pedicle lesion removal, bone grafting, and instrumentation. Endoscopic spinal tuberculosis focus removal Group 38 Case (Age  $74.02 \pm 6.31$ ), posterior pedicle lesion removal, bone grafting, and and internal fixation Group 67 (age  $70.02 \pm 17.11$ ). Main postoperative indicators revealed that Group A had significantly lower lumbar VAS scores, higher hemoglobin and total protein levels, and a lower recurrence rate than Group B at the last follow-up ( $P < 0.05$ ). Secondary postoperative indicators showed that Group A required significantly less blood transfusion, had shorter operative time, less intraoperative blood loss, shorter postoperative hospitalization time, and lower Cobb Angle than Group B ( $P < 0.05$ ).

## Limitations of the Article

① As this study is retrospective, there may be data loss or unrecorded data, which could bias the results. However, the research team has meticulously recorded the postoperative outcome indicators to maintain the integrity of the experimental data to the greatest extent; ② The sample size included was relatively small, leading to insufficient statistical efficacy and potential reporting bias; ③ The evaluation indices are limited as they do not include treatment cost and postoperative hospital stay. The results of this study require further clarification through multicenter, prospective studies to elucidate the relationship between spinal tuberculosis surgery and clinical efficacy.

## Conclusion

The results of this study demonstrate that minimally invasive puncture drainage combined with local chemotherapy treatment for spinal tuberculosis can achieve the same safety level as traditional posterior surgery. However, minimally invasive puncture drainage combined with local chemotherapy treatment for thoracolumbar tuberculosis results in less trauma, shorter operation time, less intraoperative bleeding, lower postoperative recurrence rate, and less postoperative drainage. Furthermore, this approach can effectively improve blood sedimentation, lumbar function, restore the Cobb angle, and reduce pain, making it worthy of promotion and application.

## Abbreviations

ESR, Erythrocyte sedimentation Rate; CRP, C-reactive protein; PCT, Procalcitonin; ODI, Oswestry disability index; VAS, Visual analogue scale; DVT, deep venous thrombosis; CSF, Cerebrospinal fluid; TB, Tuberculosis.

## Data Sharing Statement

Follow-up To explore and analyze the clinical efficacy of endoscopic spinal tuberculosis focus removal, posterior pedicle lesion removal, bone grafting and internal fixation combined with drug chemotherapy in the treatment of thoracolumbar tuberculosis, and to summarize the strategies for preventing complications and provide reference for clinical treatment. Because part of the data is incomplete, so the dataset analyzed in this study is not publicly available but is available to the corresponding author on reasonable request.

## Ethics Approval and Consent to Participate

We confirm that all experiments were performed in accordance with the Declaration of Helsinki. The study was approved by the Ethical Committee of the Sixth Affiliated Hospital of Xinjiang Medical University. Each patient provided written informed consent before participating in the study.

## Author Contributions

All authors made a significant contribution to the work reported, whether that is in the conception, study design, execution, acquisition of data, analysis and interpretation, or in all these areas; took part in drafting, revising or critically reviewing the article; gave final approval of the version to be published; have agreed on the journal to which the article has been submitted; and agree to be accountable for all aspects of the work.

## Disclosure

The authors report no conflicts of interest in this work.

---

## References

1. Yang Z, Liu C, Niu N, et al. Selection of the fusion and fixation range in the intervertebral surgery to correct thoracolumbar and lumbar tuberculosis: a retrospective clinical study. *BMC Musculoskelet Disord*. 2021;22(1):466. doi:10.1186/s12891-021-04335-0
2. Shi T, Zhang Z, Dai F, et al. Retrospective study of 967 patients with spinal tuberculosis. *Orthopedics*. 2016;39(5):e838–843. doi:10.3928/01477447-20160509-03
3. Chakaya J, Khan M, Ntoumi F, et al. Global tuberculosis report 2020 - reflections on the global tb burden, treatment and prevention efforts. *Int J Infect Dis*. 2021;113(Suppl 1):S7–s12. doi:10.1016/j.ijid.2021.02.107
4. Dong Z, Wang QQ, Yu SC, et al. Age-period-cohort analysis of pulmonary tuberculosis reported incidence, China, 2006–2020. *Infect Dis Poverty*. 2022;11(1):85. doi:10.1186/s40249-022-01009-4
5. Wang F, Wu HB, Yu ZJ, et al. The effect of percutaneous puncture and local chemotherapy combined with tuberculosis tuberculosis and its effect on immune function. *Chin J Gerontol*. 2022;42(10):2417–2421.
6. Chen L, Zhang J. Retrospective evaluation of short-course versus traditional preoperative chemotherapy in thoracolumbar spinal tuberculosis patients. *Med Sci Monit*. 2023;29:e941003. doi:10.12659/MSM.941003
7. Dunn RN, Ben Husien M. Spinal tuberculosis: review of current management. *Bone Joint J*. 2018;100-b(4):425–431. doi:10.1302/0301-620X.100B4.BJJ-2017-1040.R1
8. Ma S, Zhou Z, Wan Z, et al. Osteotomized debridement versus curetted debridement in posterior approach in treating thoracolumbar tuberculosis: a comparative study. *Eur Spine J*. 2022;31(2):473–481. doi:10.1007/s00586-021-07075-w
9. Zhang X, Wang KR, Gao X, et al. Endoscopic vertebral debridement and lavage drainage in the treatment of lumbar tuberculosis. *Chin J Bone Joint*. 2020;9(7):516–521.
10. Guan XL, Xue W, Wang D, et al. [Clinical application of percutaneous spinal endoscopy debridement and lavage in sacroiliac joint tuberculosis]. *Zhongguo Gu Shang*. 2021;34(11):1006–1010. Chinese. doi:10.12200/j.issn.1003-0034.2021.11.004
11. Wu H, Cui Y, Gong L, et al. Comparison between single anterior and single posterior approaches of debridement interbody fusion and fixation for the treatment of mono-segment lumbar spine tuberculosis. *Arch Orthop Trauma Surg*. 2022;142(12):3643–3649. doi:10.1007/s00402-021-03955-4
12. Zhang HQ, Li L, Xu JZ, et al. Chinese guidelines for surgical management of spinal tuberculosis (2022 edition). *Orthop J China*. 2022;30(17):1537–1548.
13. Kang T, Park SY, Lee SH, et al. Spinal epidural abscess successfully treated with biportal endoscopic spinal surgery. *Medicine*. 2019;98(50):e18231. doi:10.1097/MD.00000000000018231
14. Wang X, Long Y, Li Y, et al. Biportal endoscopic decompression, debridement, and interbody fusion, combined with percutaneous screw fixation for lumbar brucellosis spondylitis. *Front Surg*. 2023;9:1024510. doi:10.3389/fsurg.2022.1024510

15. Xing WQ, Wu JJ, Chang ZQ, et al. Endoscopic treatment of lumbar tuberculosis: a case report and literature review. *Orthop J China*. 2022;30(15):1391–1394.
16. Zhang X, Wang KR, Gao X, et al. *A Clinical Study of the Treatment of Lumbar Tuberculosis with Vertebral Debridement and Lavage Drainage by Spinal endoscopy*. Medical. University Of Chongqing; 2020.
17. Kalanjiyam GP, Dilip Chand Raja S, Rajasekaran S, et al. A prospective study comparing three different all-posterior surgical techniques in the management of thoracolumbar spinal tuberculosis. *J Clin Orthop Trauma*. 2022;34:102026. doi:10.1016/j.jcot.2022.102026
18. Lou YM, Zhu ZA, Huang QX, et al. Clinical observation of lumbar tuberculosis treated by lesion lavage and drainage at the upper edge of the pedicle. *J Minim Invas Med*. 2018;13(03):393–395.
19. Wang ZY, Zhang ZY, Sun RF, et al. Clinical value of CT guided percutaneous catheter drainage for lumbar spinal tuberculosis with major lumbar abscess. *J Clin Med*. 2016;3(33):6513–6514.
20. Fu SH, Qin K, Lu DH, et al. Lumbar spinal tuberculosis implanted with artificial bone with streptomycin sulfate and percutaneous pedicle screw under transforaminal endoscopy. *Zhongguo Zuzhi Gongcheng Yanjiu*. 2021;25(04):493–498.
21. Gao Y, Ou Y, Quan Z, et al. [Research progress of surgical treatment of thoracolumbar spinal tuberculosis]. *Zhongguo Xiu Fu Chong Jian Wai Ke Za Zhi*. 2018;32(1):112–117. Chinese. doi:10.7507/1002-1892.201705124
22. Tang Y, Wu WJ, Yang S, et al. Surgical treatment of thoracolumbar spinal tuberculosis—a multicentre, retrospective, case-control study. *J Orthop Surg Res*. 2019;14(1):233. doi:10.1186/s13018-019-1252-4
23. Pang X, Shen X, Wu P, et al. Thoracolumbar spinal tuberculosis with psoas abscesses treated by one-stage posterior transforaminal lumbar debridement, interbody fusion, posterior instrumentation, and postural drainage. *Arch Orthop Trauma Surg*. 2013;133(6):765–772. doi:10.1007/s00402-013-1722-9
24. Eun SS, Eum JH, Lee SH, et al. Biportal endoscopic lumbar decompression for lumbar disk herniation and spinal canal stenosis: a technical note. *J Neurol Surg a Cent Eur Neurosurg*. 2017;78(4):390–396. doi:10.1055/s-0036-1592157
25. Xue HB, Luo XB, Sun F, et al. Analysis of clinical efficacy of posterior transforaminal debridement and interbody fusion with instrumentation via tubular retractor system for lumbar tuberculosis. *Chin J Antituberculosis*. 2021;43(05):457–462.
26. Kim SK, Alarj M, Yang H, et al. Biportal endoscopic debridement and percutaneous screw fixation technique for spinal tuberculosis: how I do it. *Acta Neurochir*. 2021;163(11):3021–3025. doi:10.1007/s00701-021-04820-4
27. Wang XB, Wang C. Preliminary application effect of unilateral biportal endoscopy technique combined with drug chemotherapy in thoracic and lumbar tuberculosis. *Zhonghua Yi Xue Za Zhi*. 2023;103(15):1148–1153. doi:10.3760/cma.j.cn112137-20221019-02180
28. Wang XB, Long YB, Wang C, et al. Application of unilateral biportal endoscopy technique in the treatment of lumbar brucellosis spondylitis. *Chin Gen Pract*. 2023;26(08):963–971.
29. Hsu TL, Yang CJ, Pao JL. Salmonella spondylodiscitis and epidural abscess successfully treated with unilateral biportal endoscopic discectomy and debridement: a rare case report. *J Int Med Res*. 2022;50(3):3000605221085405. doi:10.1177/03000605221085405

## Infection and Drug Resistance

Dovepress

### Publish your work in this journal

Infection and Drug Resistance is an international, peer-reviewed open-access journal that focuses on the optimal treatment of infection (bacterial, fungal and viral) and the development and institution of preventive strategies to minimize the development and spread of resistance. The journal is specifically concerned with the epidemiology of antibiotic resistance and the mechanisms of resistance development and diffusion in both hospitals and the community. The manuscript management system is completely online and includes a very quick and fair peer-review system, which is all easy to use. Visit <http://www.dovepress.com/testimonials.php> to read real quotes from published authors.

Submit your manuscript here: <https://www.dovepress.com/infection-and-drug-resistance-journal>