

ORIGINAL ARTICLE

Open Access



Application of response surface methodology for optimization of medium components for the production of secondary metabolites by *Streptomyces diastatochromogenes* KX852460

Taswar Ahsan¹, Jianguang Chen¹, Yuanhua Wu^{1*} and Muhammad Irfan²

Abstract

A bioactive strain *Streptomyces diastatochromogenes* KX852460 was selected for the production of secondary metabolites to control the target spot disease on tobacco leaves, caused by the *Rhizoctonia solani* AG-3. Peanut meal, soluble starch, NaCl, yeast extract, and ammonium sulphate were identified the best ingredient for high antifungal activity of *S. diastatochromogenes* KX852460 against the *R. solani* AG-3. For the improved production of secondary metabolites, central composite design of response surface methodology was applied in submerged fermentation. The best concentrations of ingredients were peanut meal 4.88%, soluble starch 4.40%, NaCl 0.52%, yeast extract 0.47%, and ammonium sulphate 0.0360%. Study of metabolism changes in the submerged fermentation process was analyzed. Level of the reducing sugar increased, as the total sugar consumed. Amino nitrogen and total sugar decrease tendency, which indicated the growth of bacteria in submerged fermentation batch. Production of secondary and other metabolites influenced the pH of the fermentation batch.

Keywords: *Streptomyces diastatochromogenes*, Bioactive compounds, RSM, Fermentation

Introduction

Rhizoctonia solani is the major soil borne pathogen and the causal agent of several kinds of diseases in plants throughout the world, and have destructive impacts on the production of tobacco. In the Liaoning province of China in 2006 target spot disease on tobacco leaves was investigated and analyzed that *R. solani* AG-3 was the causal agent of this disease (Wu et al. 2012). Biological control is most potent practice against the *R. solani*, even though environmental stresses impact on efficacies (dos Reis Almeida et al. 2007). In agriculture for the disease management of crops, production of ecofriendly agromonic antibiotic from nature is a growing task. Several

actinomycetes species are the source of antibiotic (Clardy et al. 2006). In pharmaceutical products *Streptomyces* have a big part, and similarly agricultural antibiotics are produce by them (Demain and Sanchez 2009; El-Mehalawy et al. 2005).

Medium composition and fermentation conditions may cause effects on the production of secondary metabolites from the *Streptomyces*. In the yield of secondary metabolites these parameters have a key role (Al-Hulu 2013). Minor variations in the composition of fermentation media, can be influenced on the yield and as well as on the metabolic profile of the microbe (Scherlach and Hertweck 2009). By fermentation production of enzymes and growth of microbes, directly related to the medium composition and conditions. Optimization of these parameters became a significant process. To optimize these parameters for the fermentation, several statistics approaches are widely utilized (Kumar et al. 2016).

*Correspondence: wuyh7799@163.com

¹ Department of Plant Pathology, Plant Protection College, Shenyang Agricultural University, Shenyang, People's Republic of China
Full list of author information is available at the end of the article

Optimized nutrient parameters not only cause to boost 20% of the antifungal efficacies, however also understand its composition (Gao et al. 2016).

Response surface methodology is very beneficial tool to optimize numerous parameters of trails, to find relative-ness among the factors, to find the best combination of parameters and prediction of responses. For the optimization of microbial products this method extensively used (Grahovac et al. 2014; Kong et al. 2014). For the optimization of important fermentation parameters several types of designs are accessible, in optimization process central composite design (CCD) is one of the most useful designs (Nouby et al. 2009). In current study an effort has been made to produce antibiotic by *Streptomyces diastatochromogenes* KX852460, using the central composite design of response surface methodology to improve the antifungal activity by optimizing the nutrient components in submerged fermentation.

Materials and methods

Microorganism

Streptomyces strain TA1123 was isolated and identified as *Streptomyces diastatochromogenes* (GenBank Accession Number KX852460) on the base of morphological, biochemical and 16S ribosomal RNA gene sequence (Ahsan et al. 2017a) and submitted to Chinese general microbial collection center (CGMCC4.7384) (Ahsan et al. 2017b). *R. solani* AG-3 (Gene bank accession number of KX852461, Chinese general microbial collection center CGMCC3.18223) was isolated from infected tobacco leaves and identified through molecular techniques (Ahsan et al. 2017b).

Inoculum development

Inoculum was prepared as described in our earlier reports (Ahsan et al. 2017b). Briefly, after the development of spores of *Streptomyces* strain KX852460 on Gause's synthetic medium agar plates, two spore cakes (5 mm) were used to inoculate the fermentation medium for the production of secondary metabolites.

Mode of fermentation

Submerged fermentation by *S. diastatochromogenes* KX852460 was carried out in 250 ml Erlenmeyer flask containing 55 ml of medium. The medium comprised of (g/l) soluble starch 47.0, Yeast extract 3.0, peanut meal 22.0, $(\text{NH}_4)_2 \text{SO}_4$ 2.7, NaCl 2.7, CaCO_3 , pH 6.8 was sterilized at 121 °C, 15 lbs for 15 min. After sterilization, the medium was allowed to cool at room temperature and inoculated with 7% suspension of *S. diastatochromogenes* and incubated at 30 °C with shaking speed of 165 rpm for 96 h. After the completion of fermentation, the culture filtrate was assessed for antifungal activity (Ahsan et al. 2017a).

Selection of the most significant fermentation parameters

Peanut meal and soluble starch were used as carbon and nitrogen sources, yeast added as additional nutrient, while others were kept at original concentrations. Select the most significant parameters by using the single variable procedure. Other microelements were including NaCl (0, 0.2, 0.4, 0.6, 0.8, 1, 1.2, and 1.4%), ZnSO_4 (0, 0.01, 0.01 and 0.1%), FeSO_4 (0, 0.0005, 0.001, 0.0015 and 0.002%), $(\text{NH}_4)_2 \text{SO}_4$ (0, 0.2, 0.4, 0.6, 0.8, 1, 1.2 and 1.4%), CuSO_4 (0, 0.001, 0.01 and 0.1%), CaCO_3 (0, 0.3, 0.6, 0.9, and 1.2%), $\text{MgSO}_4 \cdot 7 \text{H}_2\text{O}$ (0, 0.001, 0.01 and 0.1%), MnCl_2 (0, 0.01, 0.02, 0.03 and 0.04%), ZnSO_4 (0, 0.001, 0.01 and 0.1%) and KH_2PO_4 (0, 0.04, 0.08, 0.12 and 0.16), were added each nutrient to the medium, and antifungal activity was determined by oxford cup method, after 96 h of inoculation under shaking at 165 rpm at 30 °C.

Experimental design for optimization of nutrient medium

In current study a central composite design (CCD) of five-factor-three-level was used, demanding 32 trials. The fractional factorial design comprises of nine factorial points, fourteen center points, and nine axial points with five parameters. The parameters and their levels used for the optimization of fermentation broth for the production of secondary metabolites was: X_1 : peanut meal (0–12 ml%), X_2 : soluble starch (0–12%), X_3 : NaCl (0–1.2%), X_4 : yeast (0–1.2%), and X_5 : ammonium sulfate (0.00–0.12%) (Table 1). Contour plots were generated to demonstrate the key and interactive impact between the independent variables and dependent variables. On the base of the ridge maxima analysis and canonical analysis, the optimal mishmash of the factors can be demonstrated, by employing the optimization function of the MINITAB 14 software. In the software response optimizer tool determined the optimal value for maximum antimicrobial activity.

Metabolic profile in the fermentation batch

Using the dinitrosalicylic acid, reducing sugar in the fermentation batch was measured (Miller 1959) and total sugars were measured by Phenol–sulphuric acid method (Dubois et al. 1956). Amino nitrogen was determined, using ninhydrin reagent (Vu and Le 2010). pH values of fermentation batch was determined at different interval of time using pH meter. Dry cell weight analysis was done by the method of (Wen et al. 2015).

Statistics analysis

For the fitted experimental results of RSM, regression method of response surface was used. Coded values represented the variables according to the equation:

$$X_i = (X_i - \bar{X}_i) / X_i = 1, 2, 3 \dots K, \quad (1)$$

Table 1 Experiment design and results of optimization of nutrient medium for the production of secondary metabolites from *Streptomyces* 1123 by the central composite design

Run no.	X ₁	X ₂	X ₃	X ₄	X ₅	Inhibition zone (mm)		Residual value
						Observed	Predicted	
1	4	4	0.4	0.4	0.04	30.5	32.0341	0.80684
2	8	8	0.8	0	0	18.9	20.1345	1.52224
3	4	12	0.4	0.4	0.04	20	21.3111	1.56492
4	4	-4	0.4	0.4	0.04	22	19.2044	1.56492
5	0	0	0	0	0.08	13.8	16.1961	1.52224
6	12	4	0.4	0.4	0.04	23	21.4044	1.56492
7	8	8	0	0.8	0	23	21.0378	1.52224
8	0	8	0.8	0	0.08	20.2	19.4878	1.52224
9	4	4	1.2	0.4	0.04	21	19.4811	1.56492
10	0	8	0.8	0.8	0	18.5	16.8995	1.52224
11	8	8	0	0	0.08	14	13.8661	1.52224
12	4	4	0.4	0.4	0.04	33.5	32.0341	0.80684
13	8	0	0	0.8	0.08	11	10.9545	1.52224
14	4	4	0.4	0.4	0.12	24.3	22.2777	1.56492
15	0	0	0.8	0.8	0.08	22.1	21.9161	1.52224
16	0	8	0	0	0	4.5	4.9795	1.52224
17	0	0	0	0.8	0	12	12.4078	1.52224
18	4	4	0.4	0.4	0.04	33.67	32.0341	0.80684
19	0	8	0	0.8	0.08	5.34	5.7511	1.52224
20	4	4	0.4	0.4	0.04	30.35	32.0341	0.80684
21	4	4	0.4	0.4	0.04	32.7	32.0341	0.80684
22	4	4	0.4	0.4	-0.04	18.5	19.0377	1.56492
23	8	0	0	0	0	2.0	1.8628	1.52224
24	-4	4	0.4	0.4	0.04	17.1	17.2111	1.56492
25	0	0	0.8	0	0	3.0	3.0645	1.52224
26	8	0	0.8	0.8	0	20.3	22.2228	1.52224
27	4	4	0.4	1.2	0.04	15	15.6944	1.56492
28	4	4	-0.4	0.4	0.04	8.43	8.4644	1.56492
29	4	4	0.4	0.4	0.04	30	32.0341	0.80684
30	8	8	0.8	0.8	0.08	10	11.1461	1.52224
31	8	0	0.8	0	0.08	13.6	16.2511	1.52224
32	4	4	0.4	-0.4	0.04	11.25	9.0711	1.56492

Coded values; X₁ peanut meal, X₂ soluble starch, X₃ NaCl, X₄ yeast, X₅ ammonium sulphate

where x_i is an independent variable coded value, X_i is the independent variable's real value, X̄ is the independent variable's real mean, and ΔX_i is the step change value. The second-order polynomial model was fitted a response curve fitting the equation;

$$Y = b_0 + \sum b_{ixi} + \sum_i \sum_j b_{ij} x_i x_j + \sum b_{iixi} \quad (2)$$

where Y is stand for measurement of response; the intercept term indicated by b₀; b_i, b_{ij} and b_{iixi} are measures of the effects of variables x_i, x_{ixj} and x_i respectively.

The variable x_{ixj} represents the first-order interaction between x_i and x_j (i < j). Analysis of variance (ANOVA) was used for the statistical analysis of the model, that comprising of the Fisher's F-test, associated probability P(F), determination coefficient R² and correlation coefficient R that measures the goodness of fit regression model. The analysis also included Student's t-value for the estimated coefficients and associated probabilities, P(t). For each variable, the quadratic models were represented as contour plots (Gao et al. 2016; Ahsan et al. 2017a).

Results

Effect of carbon, nitrogen and microelement sources on antifungal activity of Strain KX852460

Peanut meal, wheat bran, soya bean meal and soluble starch were used as carbon and nitrogen source. Effects of concentrations of these carbon and nitrogen sources in the medium on the antifungal activity were determined. By increasing the concentrations of peanut meal and soluble starch from 0 to 14%, the diameter of inhibition zone increased (Fig. 1a, d), while the antifungal effects of wheat bran and soya bean meal were not significant. Increasing the concentrations of wheat bran and soya bean meal from 0 to 14%, the diameter of inhibition zone was observed not increased as compared to peanut meal and soluble starch (Fig. 1b, c).

Yeast extract and peptone were added in the medium as additional nutrients. Yeast extract had significant antifungal effects, as the concentration increased from 0 to 1.6% (Fig. 2a). While the peptone was investigated with the same concentration and results showed not too much influenced on antifungal activity (Fig. 2b). Four

microelements were screened for the maximum production of antibiotic, to the disease management of target spot on tobacco leaf and suppressing the pathogen *R. solani* AG-3. Ammonium sulfate, calcium carbonate, sodium chloride, and magnesium sulphate with same concentration of each ranges from 0 to 1.4%. Ammonium sulfate and sodium chloride had significant effects on the antifungal activity of strain KX852460 (Fig. 3a, c). Calcium carbonate and magnesium sulphate had no significant effects on the antifungal activity against *R. solani* AG-3 by the strain KX852460 (Fig. 3b, d). On the base of results and keeping in view the cost of the experiment, following nutrients i.e. peanut meal, soluble starch, yeast extract, sodium chloride, and ammonium sulphate were screened for the optimization of fermentation medium.

Optimization of fermentation medium through CCD

The antifungal effects of antibiotic, produced by *S. diastatochromogenes* KX852460 were maximized by optimization of the medium components through central composite design (CCD) of response surface

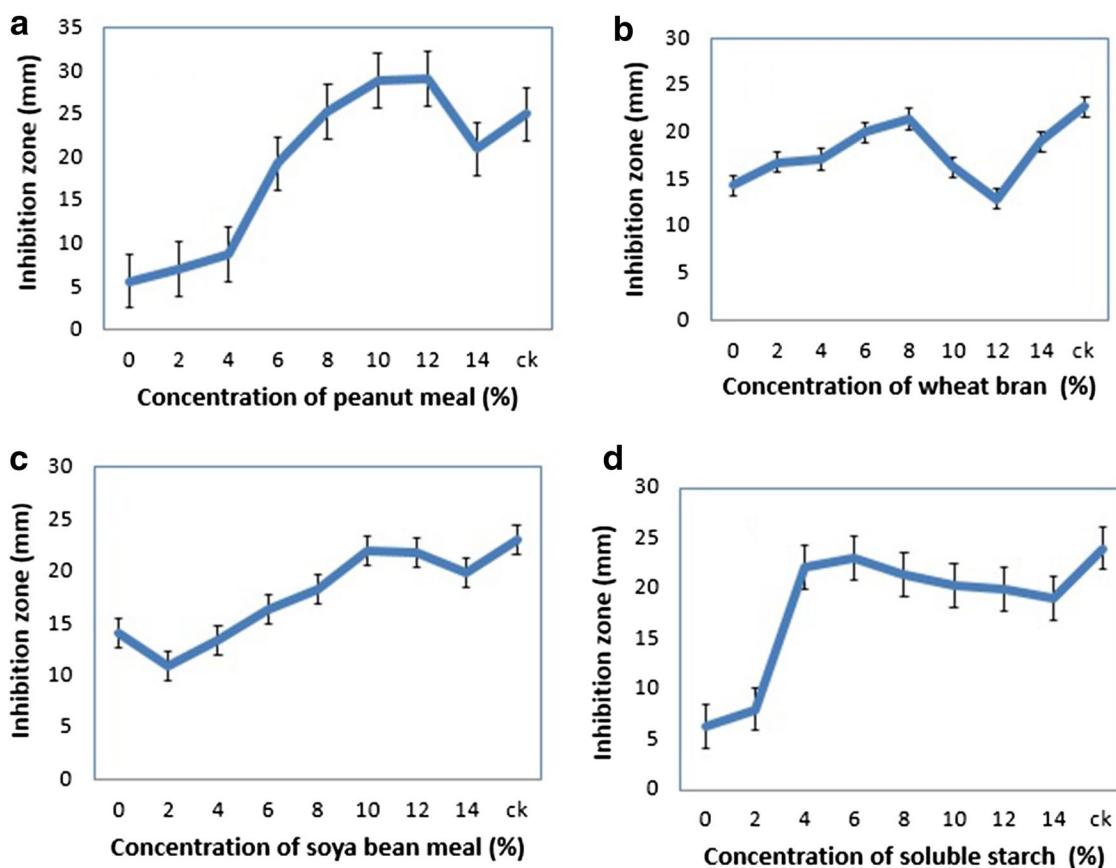


Fig. 1 Antifungal effects of nitrogen and carbon sources at different concentrations against the *R. solani* AG-3, other nutrients kept at their original concentrations. **a** Peanut meal, **b** wheat bran, **c** soya bean, and **d** soluble starch

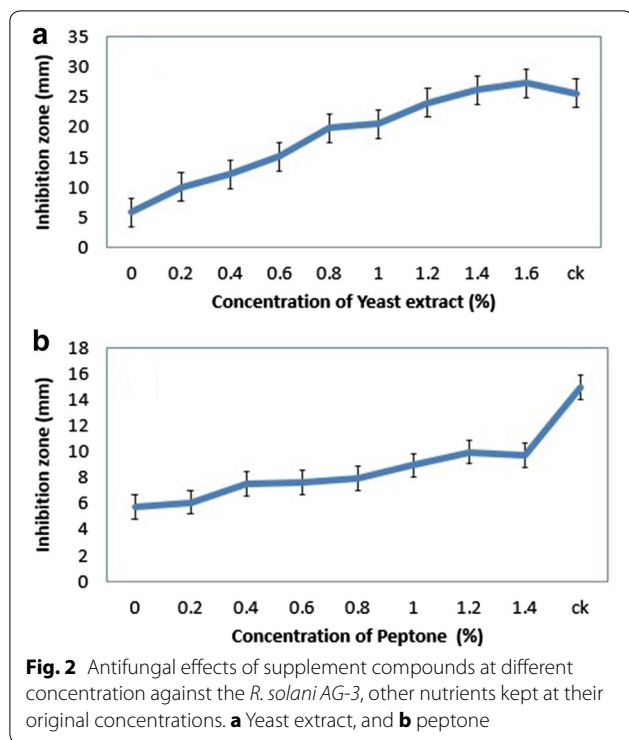


Table 2 Analysis of variance of antifungal activity

Source	DF	Adj SS	Adj MS	F-value	P value
Model	15	2406.84	160.456	39.21	0.000
Linear	5	296.63	59.327	14.50	0.000
X ₁	1	26.38	26.376	6.45	0.022
X ₂	1	6.66	6.657	1.63	0.220
X ₃	1	182.05	182.050	44.49	0.000
X ₄	1	65.80	65.803	16.08	0.001
X ₅	1	15.75	15.746	3.85	0.067
Square	5	1607.94	321.588	78.59	0.000
X ₁ ² X ₁	1	296.93	296.927	72.56	0.000
X ₃ ² X ₃	1	254.25	254.252	62.13	0.000
X ₃ ² X ₃	1	598.06	598.057	146.15	0.000
X ₄ ² X ₄	1	707.99	707.990	173.02	0.000
X ₅ ² X ₅	1	237.27	237.273	57.99	0.000
2-way interaction	5	502.27	100.453	24.55	0.000
X ₁ ² X ₂	1	28.52	28.516	6.97	0.018
X ₁ ² X ₅	1	95.26	95.258	23.28	0.000
X ₃ ² X ₄	1	71.23	71.234	17.41	0.001
X ₃ ² X ₅	1	92.93	92.930	22.71	0.000
X ₄ ² X ₅	1	214.33	214.330	52.38	0.000
Error	16	65.47	4.092		
Lack-of-fit	11	51.24	4.658	1.64	0.306
Pure error	5	14.23	2.846		
Total	31	2472.31			

methodology. Thirty-two experiments were conducted in triplicate with different concentrations of Peanut meal, soluble starch, NaCl, yeast extract and ammonium sulfate (Table 1). The response obtained from experiments of central composite design (Table 2) were calculated with second order polynomial multiple regression Eq. 3.

$$\begin{aligned}
 \text{Antifungal activity (Y)} &= -2.44 + 2.129X_1 + 2.400X_2 + 29.46X_3 \\
 &+ 43.13X_4 + 375.2X_5 - 0.1988X_1^2 \\
 &- 0.1840X_2^2 - 28.22X_3^2 - 30.71X_4^2 \\
 &- 1778X_5^2 + 0.0834X_1X_2 - 15.25X_1X_5 \\
 &- 1.319X_2X_4 - 15.06X_2X_5 - 228.7X_4X_5
 \end{aligned}
 \tag{3}$$

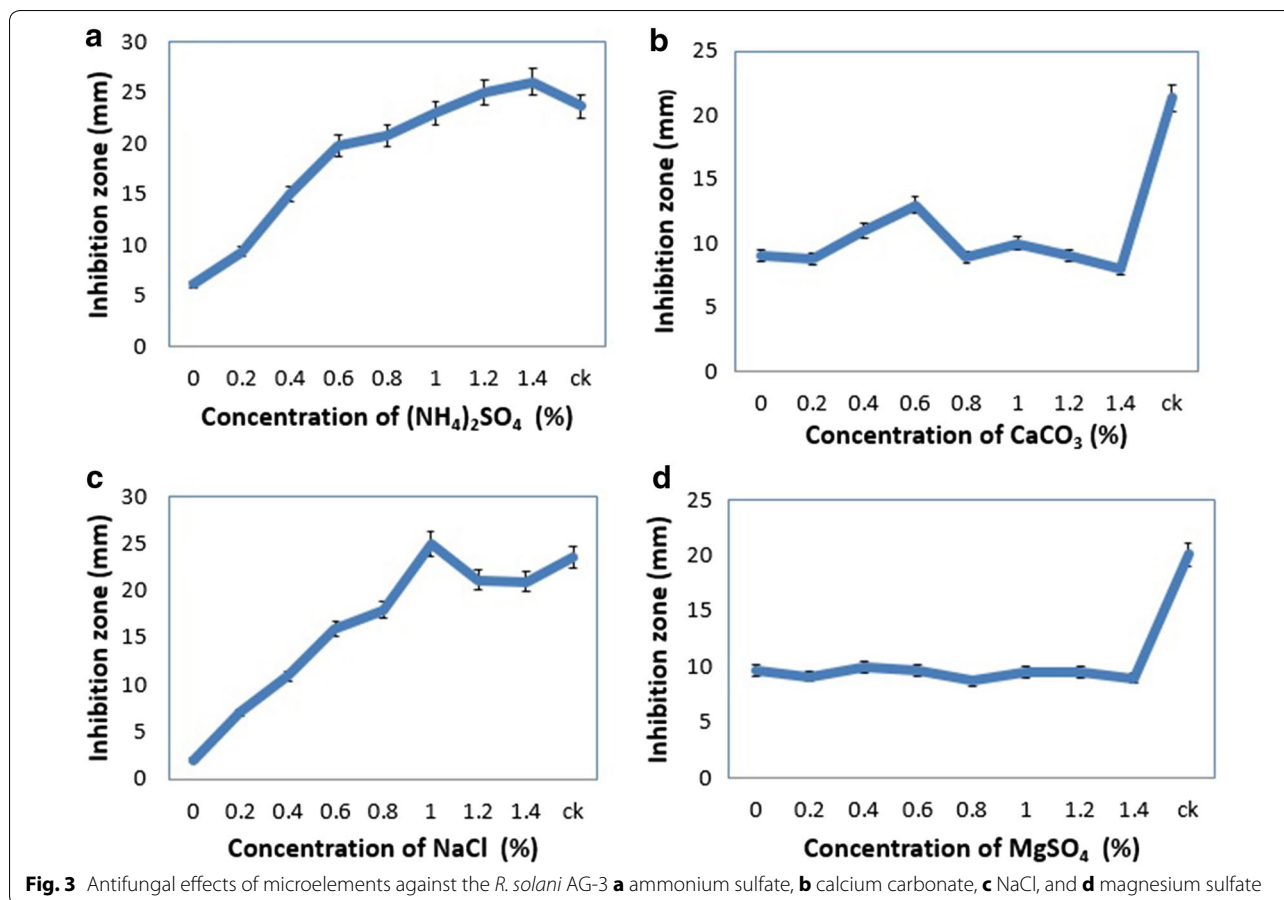
where Y is the response (antibiotic activity); and X₁, X₂, X₃, X₄ and X₅ are the coded values of the independent factors, viz., Peanut flour, soluble starch, NaCl, yeast and ammonium sulfate respectively.

Analysis of variance (ANOVA) was performed on data collected from experiments as shown in the Table 3. The proposed model for this study was found significant having Fischer test value of 39.21 and P value of 0.000. The coefficient of determination R² showed the appropriateness of the adequate model. R² values also determined the trail parameters, their interaction and showed unpredictability in the response. In this study coefficient determination R² = 0.9735 or 97.35%

indicated that about 2.65% variations were not determined by the model. The adjusted determination coefficient R² = 0.9487 or 94.87% also showed that the model was highly significant.

All the linear term regression coefficients showed great impact on the antibiotic activity according to the significance of corresponding p-values [pX₁ = 0.022, pX₂ = (0.022), pX₃ = (0.000), pX₄ = (0.001), and pX₅ = (0.067)]. Peanut flour, soluble starch, NaCl, yeast and ammonium sulfate showed their great effect during the activity of the antibiotic. Quadric coefficient of X₁₁, X₂₂, X₃₃, X₄₄, and X₅₅ were significant and negative effect of these quadrants determined that amplifying the activity of the antibiotic as the parameter's values enlarged and decreased as the parameter values increased above from certain values. Interactive terms coefficients of X₁₂, X₁₅, X₂₄, and X₄₅ were significant. Predicted and actual values of the medium and zone of inhibition against the fungus were given in the (Fig. 4).

Regression models generated surface plots to determine the impact of independent variables and interactive effect of each variable. Signification of variables directly related to the shape of each surface plot that the reciprocal interactions among the independent variables. Figures 5a–f, 6a–d shown the activity for each pair of



variables and kept the others constant at their middle values.

Metabolism of *Streptomyces diastatochromogenes* KX852460 during fermentation in shaking flasks

During the fermentation process evaluation of total sugar, reducing sugar, amino nitrogen, pH and dry mycelium weight was done. The total sugar was utilized; at initial stages the concentration of total sugar was high, within the time utilization of total sugar was increased and concentration of total sugar was decreased. At initial stages, the consumption was low, as the total sugar was utilized gradually, concentration of reducing sugar increased, and after 96 h decreased abruptly. Amino nitrogen level was up and down, while pH values was also not stable and remained between 5.5 and 6.6 in the whole process of fermentation. Dry mycelium weight was increased within the hours of fermentation process, after 84 h the weight of dry mycelium was highest, while it became decreased after 120 h of fermentation (Table 4).

Discussion

For the production of antibiotics from the microbes, microelements are very crucial. Several phenomena including physiologically and synthetically were affected by the concentrations of microelements (Cao and Ma 2002). On the base of antifungal activity against the *R. solani* AG-3, peanut meal and soluble starch were selected for the optimized carbon and nitrogen source for the production of antibiotic in the fermentation medium respectively. Several studies revealed that growth and bioactivity of microbe were greatly affected by the constitution of the substrate medium, such as carbon, nitrogen sources and inorganic microelements (Purama and Goyal 2008; Rao et al. 2007; Song et al. 2007). Current study reveals that yeast extract and peptone had impact on the activity of antibiotic against the *R. solani* AG-3. In the complex fermentation composition yeast extract and peptone had great influence on the production of actinorhodin by *Streptomyces coelicolor* A3 (2) (Elibol 2004). To find optimize parameters

response surface methodology is suitable mathematical and statistical tool; it can be helpful to find experimental design for illuminating the relations between the different parameters. Recently RSM was used extensively to optimize fermentation parameters (Bankar and Singhal 2010; Purama and Goyal 2008; Song et al. 2007). Later total sugar, reducing sugar and amino nitrogen level in the fermentation batch decreased, while at the same time growth of bacteria increased. As the total sugar, reducing sugar, and amino nitrogen consumed by the *Streptomyces* strain. The rate of growth of *Streptomyces* strain was declined due to accumulation of secondary metabolites and other metabolites in fermentation

batch and pH became decreased. By the utilization of total sugar, the level of reducing sugar decreased, positively effect on pH value and negatively effect on the dry mycelium that led to increase the synthesis of fermentation product (Li et al. 2002). *S. diastatochromogenes* KX852460 had good antifungal effects against the *R. solani* AG-3 to combat the target spot disease on tobacco leaves. Peanut meal, soluble starch, NaCl, yeast extract, and ammonium sulphate were optimized ingredients for the high antifungal activity of secondary metabolites. This product could be good fungicide for the biological disease management of target spot and other *R. solani* related disease.

Table 3 Coded coefficients for antifungal activity

Term	Effect	Coef	SE Coef	T-value	P-value	VIF
Constant		32.034	0.807	39.70	0.000	
X ₁	2.097	1.048	0.413	2.54	0.022	1.00
X ₂	1.053	0.527	0.413	1.28	0.220	1.00
X ₃	5.508	2.754	0.413	6.67	0.000	1.00
X ₄	3.312	1.656	0.413	4.01	0.001	1.00
X ₅	1.620	0.810	0.413	1.96	0.067	1.00
X ₁ ² X ₁	-6.363	-3.182	0.373	-8.52	0.000	1.02
X ₂ ² X ₂	-5.888	-2.944	0.373	-7.88	0.000	1.02
X ₃ ² X ₃	-9.031	-4.515	0.373	-12.09	0.000	1.02
X ₄ ² X ₄	-9.826	-4.913	0.373	-13.15	0.000	1.02
X ₅ ² X ₅	-5.688	-2.844	0.373	-7.61	0.000	1.02
X ₁ ² X ₂	2.670	1.335	0.506	2.64	0.018	1.00
X ₁ ² X ₅	-4.880	-2.440	0.506	-4.82	0.000	1.00
X ₂ ² X ₄	-4.220	-2.110	0.506	-4.17	0.001	1.00
X ₂ ² X ₅	-4.820	-2.410	0.506	-4.77	0.000	1.00
X ₄ ² X ₅	-7.320	-3.660	0.506	-7.24	0.000	1.00

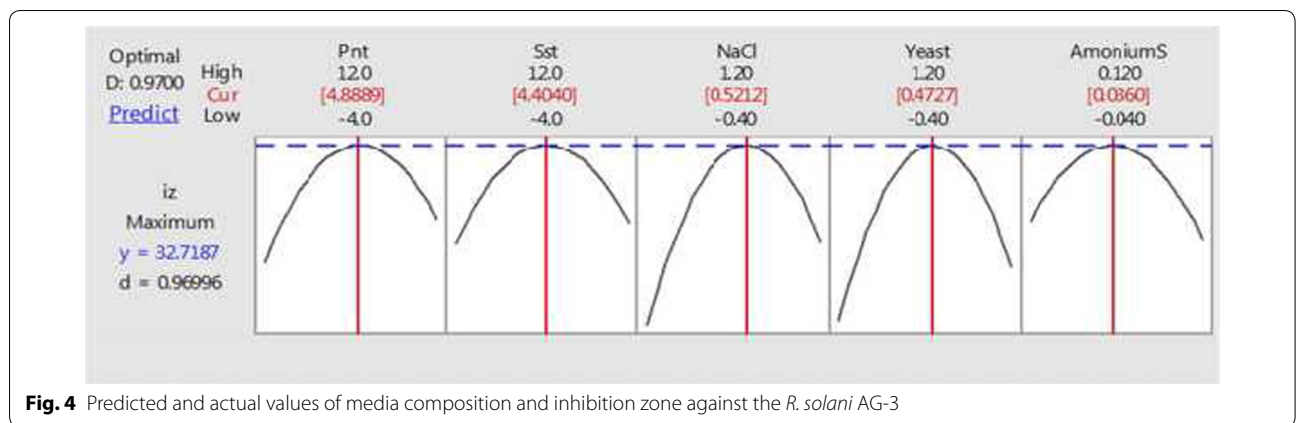
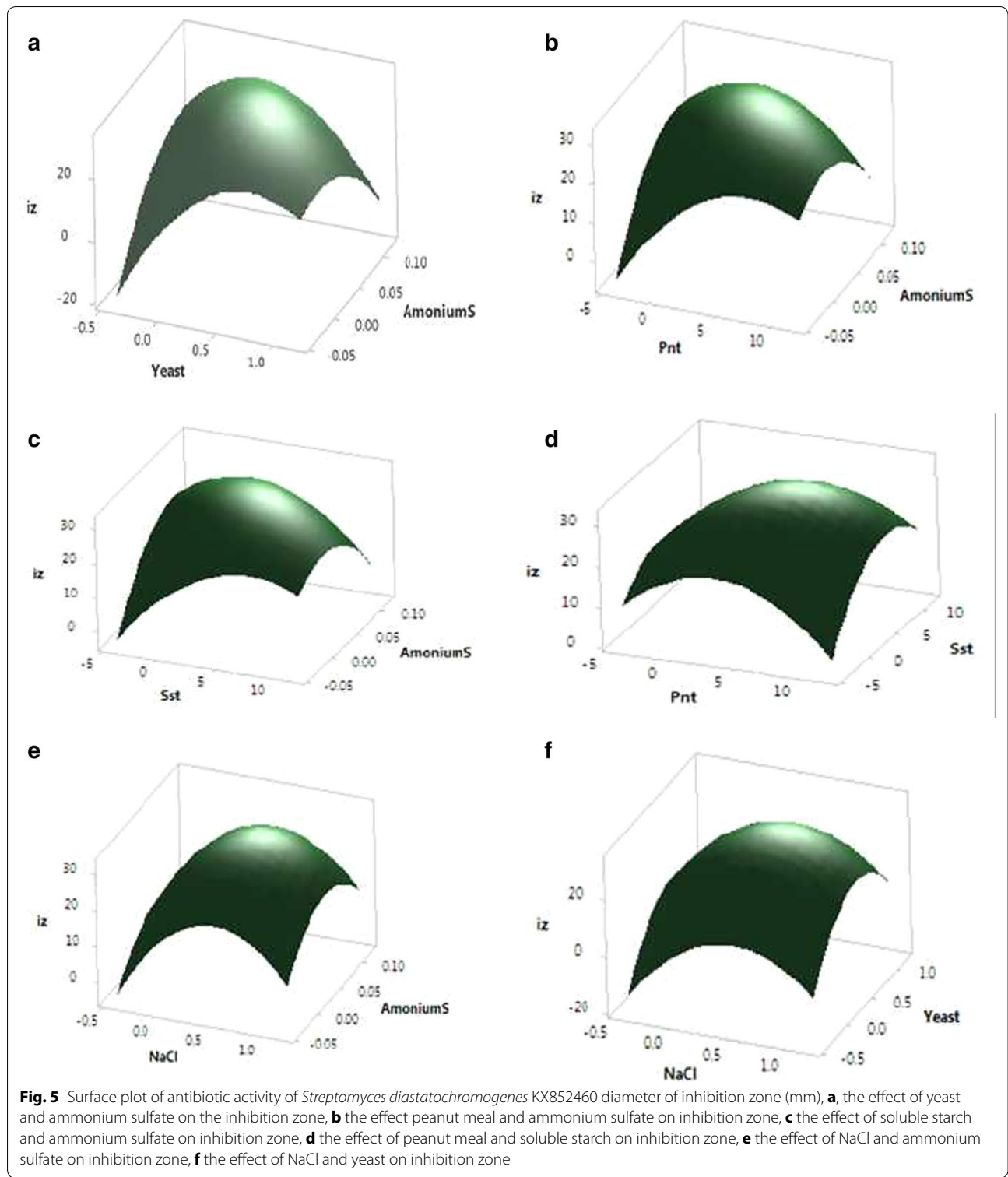


Fig. 4 Predicted and actual values of media composition and inhibition zone against the *R. solani* AG-3



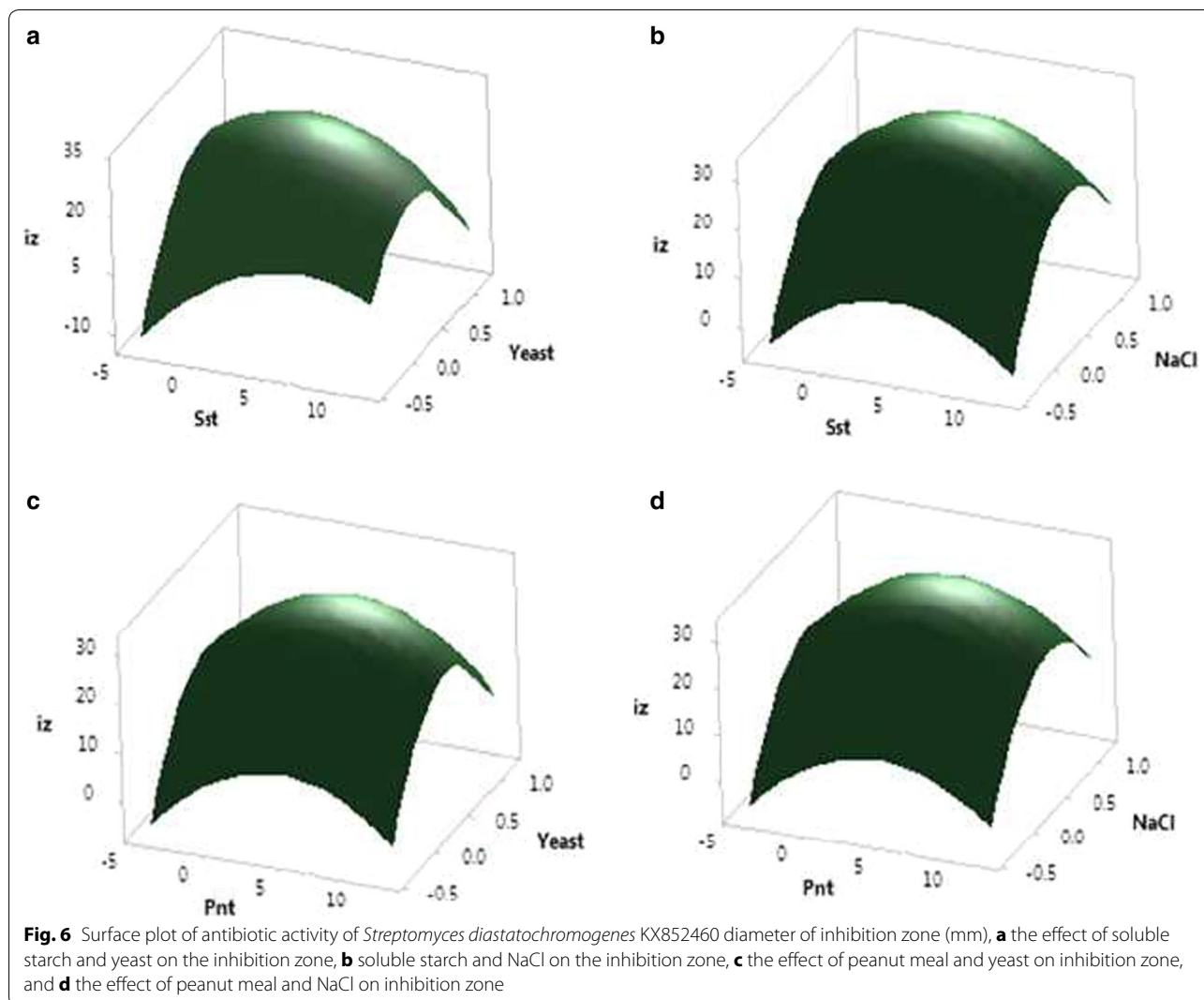


Table 4 Metabolism study of submerged fermentation batch produced by *Streptomyces diastatochromogenes* KX852460

Parameters	Culture time (h)											
	0	12	24	36	48	60	72	84	96	108	120	
Total sugar (mg/ml)	87.3	79.3	75.6	64.2	51.5	39.0	35.0	28.0	20.7	13.1	12.3	
Reducing sugar (mg/ml)	0	3.4	4.4	5.3	15.9	18.8	20.0	17.8	15.1	9.0	9.0	
Amino nitrogen (mg/ml)	0.55	0.66	0.60	0.61	0.59	0.49	0.37	0.14	0.14	0.10	0.10	
pH value	6.6	6.3	6.5	6.5	6.5	6.5	5.9	6.0	5.9	5.6	5.5	
Dry mycelium weight (mg/ml)	0	4.4	7.0	15.2	20.0	20.9	21.3	23.2	21.3	20.9	19.5	

Abbreviations

RSM: response surface methodology; CCD: central composite design; CGMCC: Chinese general microbial culture collection.

Authors' contributions

Planning and designing of study: YW; Experimentation: TA; Result Analysis: JC, Manuscript Drafting and literature survey: MI. All authors contributed in the final approval of manuscript. All authors read and approved the final manuscript.

Author details

¹ Department of Plant Pathology, Plant Protection College, Shenyang Agricultural University, Shenyang, People's Republic of China. ² Department of Biotechnology, University of Sargodha, Sargodha, Pakistan.

Acknowledgements

The authors are thankful to the technical staff of the Department of Plant Pathology, College Plant Protection, Shenyang Agricultural University, P. R. China.

Competing interests

The authors declare that they have no competing interests.

Availability of data and materials

Data regarding microbe is available in public database like NCBI and CGMCC.

Ethical approval

No data was used in this article which needs approval.

Funding

This study is supported by Project Number 183/2010 from Liaoning research center of tobacco China.

Publisher's Note

Springer Nature remains neutral with regard to jurisdictional claims in published maps and institutional affiliations.

Received: 9 March 2017 Accepted: 21 April 2017

Published online: 15 May 2017

References

- Ahsan T, Chen J, Wu Y, Irfan M, Shafi J (2017a) Screening, identification, optimization of fermentation conditions, and extraction of secondary metabolites for the biocontrol of *Rhizoctonia Solani* AG-3. *Biotechnol Biotechnol Equip* 31:1–8. doi:10.1080/13102818.2016.1259016
- Ahsan T, Chen J, Zhao X, Irfan M, Wu Y (2017b) Extraction and identification of bioactive compounds (Eicosane and Dibutyl phthalate) produced by *Streptomyces* strain KX852460 for the biological control of *Rhizoctonia solani* AG-3 strain KX852461 to control target spot disease in tobacco leaf. *AMB Expr* 7:54. doi:10.1186/s13568-017-0351-z
- Al-Hulu S (2013) Study effects of some parameters on antifungal activity for *Streptomyces spp.* *J Kerbala Uni* 11:3
- Bankar SB, Singhal RS (2010) Optimization of poly-ε-lysine production by *Streptomyces noursei* NRRL 5126. *Biores Technol* 101:8370–8375. doi:10.1016/j.biortech.2010.06.004
- Cao J, Ma H (2002) *Microbial engineering*. Science Press, Beijing
- Clardy J, Fischbach MA, Walsh CT (2006) New antibiotics from bacterial natural products. *Nat Biotechnol* 24:1541–1550. doi:10.1038/nbt1266
- Demain AL, Sanchez S (2009) Microbial drug discovery, 80 years of progress. *J Antibiot* 62:5–16. doi:10.1038/ja.2008.16
- dos Reis Almeida FB, Cerqueira FM, do Nascimento Silva R, Ulhoa CJ, Lima AL (2007) Mycoparasitism studies of *Trichoderma harzianum* strains against *Rhizoctonia solani*: evaluation of coiling and hydrolytic enzyme production. *Biotechnol Lett* 2:1189–1193. doi:10.1007/s10529-007-9372-z
- Dubois M, Gilles KA, Hamilton JK, Rebers PA, Smith F (1956) Colorimetric method for determination of sugars and related substances. *Anal Chem* 28:350–356
- Elibol M (2004) Optimization of medium composition for actinorhodin production by *Streptomyces coelicolor* A3 (2) with response surface methodology. *Proc Biochem* 39:1057–1062. doi:10.1016/s0032-9592(03)00232-2
- El-Mehalawy AA, Abd-Allah N, Mohammed R, Abu-Shady M (2005) *Actinomyces* antagonizing plant and human pathogenic fungi, II. Factors affecting antifungal production and chemical characterization of the active components. *Int J Agric Biol* 7:188–196
- Gao X, He Q, Jiang Y, Huang L (2016) Optimization of nutrient and fermentation parameters for antifungal activity by *Streptomyces lavendulae* Xjy and its biocontrol efficacies against *Fulvia fulva* and *Botryosphaeria dothidea*. *J Phytopathol* 164:155–165. doi:10.1111/jph.12440
- Grahovac J, Grahovac M, Dodić J, Bajić B, Balaž J (2014) Optimization of cultivation medium for enhanced production of antifungal metabolites by *Streptomyces hygroscopicus*. *Crop Prot* 65:143–152. doi:10.1016/j.cropro.2014.07.020
- Kong Y, Zou P, Miao L, Qi J, Song L, Zhu L (2014) Medium optimization for the production of anti-cyanobacterial substances by *Streptomyces* sp. HJC-D1 using response surface methodology. *Environ Sci Pollut Res* 21:5983–5990. doi:10.1007/s11356-014-2532-5
- Kumar M, Singh A, Beniwal V, Salar RK (2016) Improved production of tannase by *Klebsiella pneumoniae*. *AMB Expr* 6:1–11. doi:10.1186/S13568-016-0217-9
- Li XM, Li Y, Li PR (2002) The relations among reducing sugar, pH, dry weight of mycelium and production during the liquid fermentation of *Marasmius androsaceus*. *Edible Fungi China* 21:37–38
- Miller GL (1959) Use of dinitrosalicylic acid reagent for determination of reducing sugar. *Anal Chem* 31:426–428. doi:10.3181/00379727-20-47
- Nouby M, Mathivanan D, Srinivasan K (2009) A combined approach of complex eigenvalue analysis and design of experiments (DOE) to study disc brake squeal. *Int J Eng Sci Tech* 1:254–271. doi:10.4314/IJest.v1i11.58084
- Purama RK, Goyal A (2008) Screening and optimization of nutritional factors for higher dextransucrase production by *Leuconostocmesenteroides* NRRL B-640 using statistical approach. *Biores Technol* 99:7108–7114. doi:10.1016/j.biortech.2008.01.032
- Rao YK, Tsay K-J, Wu W-S, Tzeng Y-M (2007) Medium optimization of carbon and nitrogen sources for the production of spores from *Bacillus amyloliquefaciens* B128 using response surface methodology. *Proc Biochem* 42:535–541. doi:10.1016/j.procbio.2006.10.007
- Scherlach K, Hertweck C (2009) Triggering cryptic natural product biosynthesis in microorganisms. *Org Biomol Chem* 7:1753–1760. doi:10.1039/b821578b
- Song X, Zhang X, Kuang C, Zhu L, Guo N (2007) Optimization of fermentation parameters for the biomass and DHA production of *Schizochytrium limacinum* OUC88 using response surface methodology. *Proc Biochem* 42:1391–1397. doi:10.1016/j.probio.2007.07.014
- Vu T, Le V (2010) Using fed-batch fermentation in high-gravity brewing: effects of nutritional supplementation on yeast fermentation performance. *Int Food Res J* 17:117–126
- Wen Z, Liu Z, Hou Y, Liu C, Gao F, Zheng Y, Chen F (2015) Ethanol induced astaxanthin accumulation and transcriptional expression of carotenogenic genes in *Haematococcus pluvialis*. *Enzyme Microb Technol* 78:10–17. doi:10.1016/j.enzmictec.2015.06.010
- Wu YH, Zhao YQ, Fu Y, Zhao XX, Chen JG (2012) First report of target spot of flue-cured tobacco caused by *Rhizoctonia solani* AG-3 in China. *Plant Dis* 96:1824. doi:10.1094/pdis-06-12-0551.pd4

Submit your manuscript to a SpringerOpen® journal and benefit from:

- Convenient online submission
- Rigorous peer review
- Immediate publication on acceptance
- Open access: articles freely available online
- High visibility within the field
- Retaining the copyright to your article

Submit your next manuscript at ► springeropen.com