

Functional Genomic Screen Identifies *Klebsiella pneumoniae* Factors Implicated in Blocking Nuclear Factor κ B (NF- κ B) Signaling*

Received for publication, October 24, 2014, and in revised form, May 1, 2015. Published, JBC Papers in Press, May 13, 2015, DOI 10.1074/jbc.M114.621292

Anna Tomás^{a,b,c}, Leticia Lery^{d,e}, Verónica Regueiro^{a,b,c}, Camino Pérez-Gutiérrez^{a,b,c}, Verónica Martínez^{a,b,c}, David Moranta^{a,b,c}, Enrique Llobet^{a,b,c}, Mar González-Nicolau^{a,b,c,1}, Jose L. Insua^f, Juan, M. Tomas^g, Philippe J. Sansonetti^{d,e,h}, Régis Tournéize^{d,e,i}, and José A. Bengoechea^{f,j,2}

From the ^aInfection and Immunity Program, Fundación de Investigación Sanitaria de las Islas Baleares (FISIB), 07110 Mallorca, Spain, the ^bInstituto de Investigación Sanitaria de Palma (IdisPa), 07120 Mallorca, Spain, the ^cCentro de Investigación Biomédica en Red Enfermedades Respiratorias (CIBERES), 28029 Madrid, Spain, the ^dUnité de Pathogénie Microbienne Moléculaire, Institut Pasteur, 75724 Paris, France, ^eINSERM U786, 75724 Paris, France, the ^fCentre for Infection and Immunity, Queen's University Belfast, Belfast BT9 7AE, United Kingdom, the ^gDepartamento de Microbiología, Facultad de Biología, Universidad de Barcelona, 08028 Barcelona, Spain, ^hChaire de Microbiologie et Maladies Infectieuses, Collège de France, 75231 Paris, France, ⁱImagopole, Plateforme d'Imagerie Dynamique, Institut Pasteur, 75724 Paris, France, and the ^jConsejo Superior de Investigaciones Científicas (CSIC), 28008 Madrid, Spain

Background: There is limited knowledge of *Klebsiella pneumoniae* determinants implicated in the blocking of the NF- κ B signaling pathway.

Results: A high-throughput genetic screen led to the identification of 114 putative *K. pneumoniae* genes that are associated with suppression of NF- κ B activation.

Conclusion: CPS, LPS, and the T2SS-secreted PulA are needed for immune evasion.

Significance: A new therapeutic approach to treat *Klebsiella* infections will be the prevention of immune evasion.

Klebsiella pneumoniae is an etiologic agent of community-acquired and nosocomial pneumonia. It has been shown that *K. pneumoniae* infections are characterized by reduced early inflammatory response. Recently our group has shown that *K. pneumoniae* dampens the activation of inflammatory responses by antagonizing the activation of the NF- κ B canonical pathway. Our results revealed that *K. pneumoniae* capsule polysaccharide (CPS) was necessary but not sufficient to attenuate inflammation. To identify additional *Klebsiella* factors required to dampen inflammation, we standardized and applied a high-throughput gain-of-function screen to examine a *Klebsiella* transposon mutant library. We identified 114 mutants that triggered the activation of NF- κ B. Two gene ontology categories accounted for half of the loci identified in the screening: metabolism and transport genes (32% of the mutants) and envelope-related genes (17%). Characterization of the mutants revealed that the lack of the enterobactin siderophore was linked to a reduced CPS expression, which in turn underlined the NF- κ B activation induced by the mutant. The lipopolysaccharide (LPS) O-polysaccharide and the pullulanase (PulA) type 2 secretion system (T2SS) are required for full effectiveness of the immune

evasion. Importantly, these factors do not play a redundant role. The fact that LPS O-polysaccharide and T2SS mutant-induced responses were dependent on TLR2-TLR4-MyD88 activation suggested that LPS O-polysaccharide and PulA perturbed Toll-like receptor (TLR)-dependent recognition of *K. pneumoniae*. Finally, we demonstrate that LPS O-polysaccharide and *pulA* mutants are attenuated in the pneumonia mouse model. We propose that LPS O-polysaccharide and PulA T2SS could be new targets for the design of new antimicrobials. Increasing TLR-governed defense responses might provide also selective alternatives for the management of *K. pneumoniae* pneumonia.

Klebsiella pneumoniae is a Gram-negative pathogen causing a wide range of infections from urinary tract infections to pneumonia. *Klebsiella*-triggered pneumonia is particularly devastating among immunocompromised patients with mortality rates between 25 and 60% (1). *K. pneumoniae* is a member of the so-called ESKAPE group of microorganisms to emphasize that they effectively “escape” the effects of antibacterial drugs (2). Despite the clinical relevance of *K. pneumoniae*, the infection biology of this pathogen is poorly understood, and therefore it is both urgent and necessary to better understand its pathophysiology to be able to design new strategies to treat *K. pneumoniae* infections.

The best characterized virulence factor of this pathogen is the capsule polysaccharide (CPS).³ Isogenic CPS mutant strains

* This work was supported by a grant from ERA-Net Pathogenomic 2008 (to P. J. S. and J. A. B.), Marie Curie Career Integration Grant (U-KARE) PCIG13-GA-2013-618162, Biotechnology and Biological Sciences Research Council (BBSRC) Grant BB/L007223/1, and Queen's University Belfast start-up funds (to J. A. B.). The authors declare that they have no conflicts of interest with the contents of this article.

⌘ Author's Choice—Final version free via Creative Commons CC-BY license.

¹ Recipient of a predoctoral fellowship from the Programa Nacional de Proyectos de Investigación Fundamental (SAF2012-39841) del Ministerio de Ciencia e Innovación.

² To whom correspondence should be addressed: Centre for Infection and Immunity, Health Sciences Bldg., 97 Lisburn Rd., Queen's University, Belfast BT9 7AE, United Kingdom. Tel.: 44-28-9097-2260; Fax: 44-28-9097-2671; E-mail: j.bengoechea@qub.ac.uk.

³ The abbreviations used are: CPS, capsule polysaccharide; EGFR, EGF receptor; Omp, outer membrane protein; TLR, Toll-like receptor; OPS, O-polysaccharide; T2SS, type 2 secretion system; SEAP, secreted form of the human embryonic alkaline phosphatase; RLU, relative light unit; RT-qPCR, real time quantitative PCR; ANOVA, analysis of variance; Cm, cloramphenicol; Tp, trimethoprim; RFU, relative fluorescence units.

are avirulent and unable to cause pneumonia and urinary tract infections (3–5). Lipid A of lipopolysaccharide (LPS), the outer membrane proteins OmpA and OmpK36, iron-scavenging systems, and several adhesins are other virulence determinants that have been characterized (6–10). Nonetheless, there is still limited knowledge of the exact role of individual virulence factors in *Klebsiella* infections.

A wealth of evidence indicates that the activation of early inflammatory responses is essential to clear *Klebsiella* infections (11–14). Any interference with this response leads to a more severe infection (15), thus in turn, augmenting the immune response with exogenous inflammatory mediators decreases the mortality associated with *K. pneumoniae* infection (16–19). Collectively, this evidence suggests that *Klebsiella* tries to counteract the induction of these host defense responses. Indeed, we (8, 20–22) and others (23) have provided compelling evidence for this notion.

At the molecular level, we have demonstrated that *K. pneumoniae* abrogates the activation of inflammatory responses by targeting NF- κ B and MAPK signaling pathways (22, 24). *Klebsiella* antagonizes the activation of NF- κ B via the deubiquitinase CYLD and blocks the phosphorylation of MAPKs via the MAPK phosphatase MKP-1 (22). CYLD and MKP-1 are normally regulated to return to homeostasis after inflammation to protect the host from an overwhelming inflammatory response (25, 26). To exert this anti-inflammatory effect, *K. pneumoniae* affects the membrane association of the receptor NOD1 (22). This is dependent on *Klebsiella*-triggered Rho GTPase Rac1 inhibition (22). To identify additional host factors involved in the anti-inflammatory effect, we applied an unbiased high-throughput siRNA gain-of-function screen to interrogate the human kinome (24). Follow-up validation revealed that *K. pneumoniae* exploits an EGF receptor (EGFR)-PI3K-AKT-PAK4-ERK-GSK3 β signaling pathway to induce the expression of the deubiquitinase CYLD to attenuate the cytokine-dependent nuclear translocation of NF- κ B (24). Our group uncovered a role for CPS in the activation of EGFR and EGFR-dependent signaling (24). However, because CPS does not activate NOD1-dependent responses (22), *K. pneumoniae* may employ additional factors to attenuate NF- κ B activation.

This study was designed to identify *K. pneumoniae* determinants implicated in blocking the activation of the NF- κ B signaling pathway. To take a systematic approach toward the identification of these bacterial factors, we performed a high-throughput genetic screen to mine a transposon mutant library of *K. pneumoniae* strain 52145. This is a reference strain of serotype K2 highly virulent *Klebsiella* strains from which important virulence factors, including the large virulence plasmid harboring the regulator of mucoid phenotype (*rmpA*) and the aerobactin cluster, have been identified (27). We found 114 mutants that, in sharp contrast to the wild-type strain, activated the NF- κ B signaling pathway. Further characterization confirmed the critical role of *K. pneumoniae* CPS in blocking NF- κ B activation and uncovered the role of the LPS polysaccharide section and the pullulanase type II secretion system (T2SS) in immune evasion.

Experimental Procedures

Bacterial Strains, Growth Conditions, and Reagents

Strains and plasmids used in this study are listed in Table 1. *K. pneumoniae* 52145 (hereafter Kp52145) is a clinical isolate (serotype O1:K2) described previously (3, 28). Bacteria were grown in Luria-Bertani (LB) medium at 37 °C unless indicated otherwise. When appropriate, antibiotics were added to the growth medium at the following concentrations: ampicillin, 100 μ g/ml; rifampicin, 50 μ g/ml; kanamycin, 50 μ g/ml; chloramphenicol (Cm), 25 μ g/ml; and trimethoprim (Tp), 100 μ g/ml. FeSO₄ and FeCl₃ were used at a concentration of 10 μ M, and 2-2'-dipyridyl (Sigma) was used at a concentration of 200 μ M. The sequences of the primers used in this study are available from the authors upon request.

Cell Culture and Infection

Monolayers of A549 (ATCC CCL185) were grown as described previously (22). For infections, A549 cells were seeded to 90% confluence (3×10^5 cells/well) in 24-well tissue culture plates. Cells were serum-starved for 16 h before infection. Bacteria were prepared as described (22), and infections were performed using a multiplicity of infection of 100 bacteria/cell unless indicated otherwise. For incubation times longer than 120 min, bacteria were killed by the addition of gentamicin (100 μ g/ml), which was not removed until the end of the experiment. Cell viability, assessed by trypan blue dye exclusion, was >95% even after 4 h of infection.

Mutant Library Construction

Kp52145 was made electrocompetent following the method described by Sharma and Schimke (29). Transposon mutagenesis was performed by electroporating $\sim 1 \mu$ g of the pRL27 mini Tn5 transposon (30) to 50 μ l of Kp52145 electrocompetent cells using a Gene Pulser Xcell (Bio-Rad) followed by a 60-min recovery in SOC (super optimal broth) medium at 37 °C. The transposon carries a kanamycin resistance cassette and an R6K origin of replication (30). Transposants were plated on LB-rifampicin-kanamycin plates, and the transposon mutant library was generated from six independent electroporation rounds. A total of 5320 mutants were arrayed in a 96-well plate format and stored at $-80 \text{ }^\circ\text{C}$ in 20% (v/v) glycerol (master plate). One well without bacteria was kept as a negative control in all plates (typically well H12). Random transposon insertion was checked in ~ 200 clones by direct genomic sequencing. Genomic DNA was extracted using the Realpure spin kit (Real). Sequencing reaction was performed in an iCycler (Bio-Rad) containing 2 μ l of BigDye Master Mix, 2 μ l of 5 \times buffer, 1 μ l of betaine (5 M), 1 μ M primer (tpnRL17), and 2–5 μ g of genomic DNA. The thermal profile consisted of 5 min of a denaturalization step at 95 °C followed by 100 cycles of 95 °C for 30 s, 50 °C for 20 s, and 60 °C for 4 min. Sequencing reactions were purified following the manufacturer's instructions, resuspended in 10 μ l of Hi-Di formamide, and run in an ABI 3730 genome sequencer (Applied Biosystems).

Construction of a NF- κ B Reporter Cell Line

A549 cells were seeded into 24-well plates at a density of 4×10^4 cells/well and transfected 24 h later with 5 μ g of pNifty2-SEAP

TABLE 1
Bacterial strains and plasmids used in this study

Bacterial strains and plasmids	Genotype or comments	Source or reference
Strains		
<i>Escherichia coli</i>		
CC118- λ pir	Δ (ara-leu)7967 araD139 Δ lacX74 <i>galE galK</i> Δ phoA20 thi-1 <i>rpsE rpoB argE</i> (Am) <i>recA1</i>	Laboratory collection
DH5a- λ pir	DlacU169 (F80lacZDM15) <i>recA1 endA1 hsdR17</i> thi-1 <i>gyrA96 relA1</i> λ pir phage lysogen	Laboratory collection
SY327- λ pir	(lac pro) <i>argE</i> (Am) <i>rif^RnalA recA56</i> (λ pir)	Laboratory collection
<i>Klebsiella pneumoniae</i>		
Kp52145	Clinical isolate; serotype O1:K2; Rif ^R	(3, 28)
52145- Δ wca _{K2}	Kp52145, Δ wca _{K2} , capsule mutant; Rif ^R	(32)
52OmpA2	Kp52145, Δ ompA::Cm, <i>ompA</i> gene is inactivated; Rif ^R , Cm ^R	(37)
52 Δ wcaK2OmpA	52145- Δ wca _{K2} , Δ ompA::Cm, capsule mutant in which <i>ompA</i> is inactivated; Rif ^R , Cm ^R	(37)
52 Δ waaL	Kp52145, Δ waaL, <i>waaL</i> is inactivated; nonpolar mutant; Rif ^R	(68)
52 Δ wabM	Kp52145, Δ wabM, <i>wabM</i> is inactivated; nonpolar mutant; Rif ^R	(50)
52 Δ wabH	Kp52145, Δ wabH, <i>wabH</i> is inactivated; nonpolar mutant; Rif ^R	(50)
52 Δ wabK	Kp52145, Δ wabK, <i>wabK</i> is inactivated; non polar mutant; Rif ^R	(50)
52145- Δ wca _{K2} Δ waaL	52145- Δ wca _{K2} , Δ waaL, <i>waaL</i> is inactivated; non polar mutant; Rif ^R	(6)
52145- Δ wca _{K2} Δ wabM	52145- Δ wca _{K2} , Δ wabM, <i>wabM</i> is inactivated; non polar mutant; Rif ^R	(6)
52145- Δ wca _{K2} Δ wabK	52145- Δ wca _{K2} , Δ wabK, <i>wabK</i> is inactivated; non polar mutant; Rif ^R	(6)
52145- Δ wca _{K2} Δ wabH	52145- Δ wca _{K2} , Δ wabH, <i>wabH</i> is inactivated; non polar mutant; Rif ^R	(6)
52waaL::tn5	Kp52145; Δ waaL::tn5, <i>waaL</i> is inactivated; Rif ^R , Km ^R	This study
52entF::tn5	Kp52145; <i>entF</i> ::tn5, <i>entF</i> is inactivated; Rif ^R , Km ^R	This study
52145- Δ wca _{K2} entF	52145- Δ wca _{K2} , <i>entF</i> :: pKNOCK-Cm_entF, capsule mutant in which <i>entF</i> is inactivated; Rif ^R , Cm ^R	This study
52pulC::tn5	Kp52145; Δ pulC::tn5, <i>pulC</i> is inactivated; Rif ^R , Km ^R	This study
52irp1	Kp52145, <i>irp1</i> :: pKNOCK-Cm_IRP1, <i>irp1</i> is inactivated; Rif ^R , Cm ^R	This study
52iutA	Kp52145, <i>iutA</i> :: pKNOCK-Cm_iutA, <i>iutA</i> is inactivated; Rif ^R , Cm ^R	This study
52glf	Kp52145, <i>glf</i> :: pSFglf, <i>glf</i> is inactivated; Rif ^R , Km ^R	This study
52 Δ pulA	Kp52145, <i>pulA</i> :: pKNOCK-Cm_pulA, <i>pulA</i> is inactivated; Rif ^R , Cm ^R	This study
52pulACom	52 Δ pulA harboring mini-Tn7TKmKpnPulA; PulA levels restored; Rif ^R , Cm ^R , Km ^R	This study
52145- Δ wca _{K2} pulA	52145- Δ wca _{K2} , <i>pulA</i> :: pKNOCK-Cm_pulA, capsule mutant in which <i>pulA</i> is inactivated; Rif ^R , Cm ^R	This study
52145- Δ wca _{K2} pulACom	52145- Δ wca _{K2} pulA mutant harboring mini-Tn7TKmKpnPulA; PulA levels restored; Rif ^R , Cm ^R , Km ^R	This study
52 Δ waaL.pulA	52 Δ waaL, <i>pulA</i> :: pKNOCK-Cm_pulA, <i>waaL</i> mutant in which <i>pulA</i> is inactivated; Rif ^R , Cm ^R	This study
52145- Δ wca _{K2} Δ waaL.pulA	52145- Δ wca _{K2} Δ waaL, <i>pulA</i> :: pKNOCK-Cm_pulA, capsule and <i>waaL</i> mutant in which <i>pulA</i> is inactivated; Rif ^R , Cm ^R	This study
Plasmids		
pRL27	Tn5 transposon delivery vector, Km ^R	(30)
pGEM-T Easy	Cloning plasmid, Amp ^R	Promega
pKNOCK-Cm	Suicide vector, R6K replication origin, Cm ^R	(35)
pKNOCK-Cm_entF	pKNOCK-Cm containing an internal fragment of <i>entF</i> gene for mutant construction, Cm ^R	This study
pKNOCK-Cm_IRP1	pKNOCK-Cm containing an internal fragment of <i>irp1</i> gene for mutant construction, Cm ^R	This study
pKNOCK-Cm_iutA	pKNOCK-Cm containing an internal fragment of <i>iutA</i> gene for mutant construction, Cm ^R	This study
pKNOCK-Cm_pulA	pKNOCK-Cm containing an internal fragment of <i>pulA</i> gene for mutant construction, Cm ^R	This study
pSF100	Suicide vector, R6K replication origin, Km ^R	(36)
pSFglf	pSF100 containing an internal fragment of <i>glf</i> gene for mutant construction, Km ^R	This study
pUC18R6KT-mini-Tn7TKm	pUC18R6KT-mini-Tn7TKm containing a Km cassette, Amp ^R , Km ^R	(37)
pTSNSK-Tp	pTSNSK-Tp containing a transposase for Tn7 insertion, Km ^R , Tp ^R	(38)
pUC18R6KT-mini-Tn7TKm_pulACom	pUC18R6KT-mini-Tn7TKm containing <i>pulA</i> gene for complementation, Amp ^R , Km ^R	This study
p34S-Tp	Source of Tp cassette; Amp ^R , Tp ^R	(40)
pPROBE'-gfp[LVA]	Plasmid containing <i>gfp</i> without promoter as reporter gene, Km ^R	(41)
pPROBE'-gfp[LVA]Tp	Trimethoprim resistance cassette cloned into SphI site of pPROBE'-gfp[LVA], Tp ^R	This study
pPROBE'-gfp[LVA]Tp_entC	pPROBE'-gfp[LVA]Tp containing <i>entC</i> promoter region, Tp ^R	This study
pPROBE'-gfp[LVA]Tp_ybtA	pPROBE'-gfp[LVA]Tp containing <i>ybtA</i> promoter region, Tp ^R	This study
pPROBE'-gfp[LVA]Tp_psn	pPROBE'-gfp[LVA]Tp containing <i>psn</i> promoter region, Tp ^R	This study
pPROBE'-gfp[LVA]Tp_iucA	pPROBE'-gfp[LVA]Tp containing <i>iucA</i> promoter region, Tp ^R	This study
pGPLKpnCps	pGPL01 containing <i>cps</i> promoter region; Amp ^R	(37)

(InvivoGen) using Lipofectamine 2000 (Invitrogen) lipofection reagent according to the manufacturer's instructions. In the pNifty2-SEAP vector, the proximal promoter of the endothelial cell-leukocyte adhesion molecule (ELAM-1; E-selectin), containing three NF- κ B sites and lacking an AP1/CREB (cAMP-response element-binding protein) site found in the full-length promoter, controls the reporter gene, SEAP (secreted form of the human embryonic alkaline phosphatase). Twenty-four hours after transfection, cells were selected with 500 μ g/ml Zeocin for 2 weeks (InvivoGen). Cells were singularized by serial dilutions in 96-well plates, and monoclonal cell lines were propagated for 2 weeks. Stably transfected A549-SEAP cells were grown in complete RPMI medium supplemented with 100 μ g/ml Zeocin. A2 was the clone selected for screening purposes.

High-throughput Screening

Cell Seeding and Bacterial Culture—A549-SEAP A2 cells from the same passage number were seeded into 96-well plates

at $1-2 \times 10^4$ cells/well in 100 μ l of RPMI 1640. Transposon mutants and controls were grown in 96-well plates. 5 μ l from the bacteria master plate were used to inoculate 150 μ l of LB supplemented with the appropriate antibiotics. Plates were incubated overnight at 37 $^{\circ}$ C without shaking. Bacterial growth was determined by measuring absorbance at 600 nm (A_{600}) using a microplate reader (Biotek PowerWave HT).

Infection—A549-SEAP A2 cells were washed twice with 200 μ l of PBS, and then 150 μ l of RPMI 1640 supplemented with 10% fetal calf serum (FCS) was added. Five μ l of the bacterial overnight culture was used to infect the cells (multiplicity of infection, \sim 100:1). Only the inner 60 wells of the plate were used. Two replicates of each control (negative/positive (IL-1 β , 10 ng/ml) cells infected with Kp52145, 52OmpA, 52145 Δ wca_{K2}, and 52145 Δ wca_{K2}-OmpA) and 48 mutants were run in each plate. After 3 h, wells were washed twice with 200 μ l of PBS, and then 100 μ l of RPMI 1640 containing 100 μ g/ml of gentamicin was

added to each well. Plates were incubated overnight in a humidified CO₂ incubator.

Colorimetric Assay—30 μ l of the supernatant was mixed with 200 μ l of QUANTI-Blue reagent (InvivoGen), and the mixture was incubated at 37 °C for 24 h. The levels of SEAP were measured at an absorbance at 625 nm (A_{625}).

Statistical Analysis—The *Z* score was calculated for each of the 48 wells of a plate as described previously (31). For a given well, the *Z* score was calculated by subtracting the mean value of the wells on that plate from the value of the well and dividing by the standard deviation value for all the plate wells. A *Z* score ≥ 2 was considered significant. As means and standard deviations are greatly influenced by statistical outliers (31), which in the context of a screening are putative hits, we also selected mutants that induced SEAP levels higher than $A_{625} > 0.5$, which represents a 2-fold A_{625} value induced by the wild-type strain.

Hit Validation—Four independent validation rounds were run for each selected hit. A hit was considered validated if the SEAP levels were $A_{625} > 0.5$ in at least two of four validation runs.

Transposon Insertion Site Identification—Genomic DNA was purified using the Realpure spin kit (Real). Direct genomic sequencing was carried out as described above (see “Mutant Library Construction”).

Growth Deficiency Determination—To identify those hits with growth deficiencies, transposon mutants were plated on LB plates or M9 plates supplemented with either 0.2% glucose or 10 mM citrate and incubated at 37 °C for 48 h.

CPS Purification and Quantification

Cell-associated CPS from *K. pneumoniae* strains were purified using the hot phenol-water method exactly as described previously (32). CPS was quantified by determining the concentration of uronic acid in the samples using a modified carbazole assay (33).

LPS Extraction and Analysis by SDS-PAGE

The LPS from *K. pneumoniae* strains was extracted by a modified phenol-water purification method (34). The LPS was run on a 12% SDS-PAGE and visualized using a Pro-Q Emerald 300 lipopolysaccharide gel stain Kit (Invitrogen).

K. pneumoniae Mutant Construction

The *entF*, *irp1*, *iutA*, and *pulA* mutants were constructed by insertion mutagenesis using the pKNOCK-Cm suicide vector (35). An internal fragment of each gene was amplified using genomic DNA from wild-type *K. pneumoniae* 52145, *Vent* polymerase (New England Biolabs), and the corresponding primer pairs. PCR products were phosphorylated and cloned into the *Sma*I-digested and dephosphorylated pKNOCK-Cm vector to obtain pKNOCK-Cm_entF, pKNOCK-Cm_irp1, pKNOCK-Cm_iutA, and pKNOCK-Cm_pulA, respectively. The *glf* mutant was also constructed by insertion mutagenesis using the *pir* replication-dependent plasmid pSF100 (36). Plasmids were introduced into *Klebsiella* by conjugation and PCR, or Southern blot was used to identify strains in which plasmids were inserted into the genome by homologous recombination.

Complementation of pulA Mutant

To complement the *pulA* mutant, a DNA fragment of 4,008 bp containing the putative promoter region and coding region of *pulA* was PCR-amplified (primer pair pulACom.F-pulACom.R) using *Vent* polymerase, gel-purified, and cloned into *Sma*I-digested pUC18R6KT-mini-Tn7TKm (37) to obtain pUC18R6KT-mini-Tn7TKm_pulACom. The pTSNSK-Tp plasmid, which contains the transposase *tnsABCD*, necessary for Tn7 transposon mobilization (38), was electroporated into the *pulA* mutant. Then, the pUC18R6KT-mini-Tn7TKm_pulACom plasmid was mobilized into this strain by triparental conjugation using the helper strain *Escherichia coli* HB101/pRK2013. Colonies were screened for resistance to kanamycin and sensitivity to ampicillin. Because the ampicillin cassette is located outside of the Tn7 region on the vector, sensitivity to ampicillin denotes the integration of the Tn7 derivative at the *attTn7* site instead of incorporation of the vector into the chromosome. Confirmation of integration of the Tn7 transposon at the established *attTn7* site located downstream of the *glmS* gene was verified by a multiplex PCR using primers glmS.UP, glmS.DW, Tn7.L, and Tn7.R. PCR reactions were performed in a final volume of 25 μ l containing 50 ng of DNA, 1.5 mM MgCl₂, 0.2 mM dNTPs, each primer at 0.2 μ M, and 1 unit of GoTaq polymerase (Promega). The thermal profile was as follows: an initial denaturation step at 94 °C for 5 min followed by 5 cycles of 94 °C for 45 s, a touch-down from 62 to 58 °C for 45 s and 72 °C for 45 s, and then 25 cycles of 94 °C for 45 s, 58 °C for 45 s, and 72 °C for 45 s, and a final extension step at 72 °C for 5 min. Correct insertion of the Tn7 transposon yielded two amplicons of 462 and 216 bp amplified with primer pairs glmS.UP-Tn7.L and glmS.Dw-Tn7.R, respectively. Only one amplicon of 455 bp, corresponding to an internal fragment of the *glmS* gene, was amplified when used as the template DNA from wild-type *Klebsiella*. pTSNSK-Tp from the recipient strain was cured by growing bacteria at 37 °C due to the plasmid-thermosensitive origin of replication pSC101. Plasmid removal was confirmed by susceptibility to trimethoprim.

PulA levels on the outer membrane fraction, purified as described previously (39), were detected by immunoblotting using rabbit antibody anti-PulA (1:1000), kindly donated by A. Pugsley. Proteins were resolved using 12% SDS-PAGE and electroblotted to nitrocellulose membrane. Membranes were blocked with 4% skim milk in TBST (137 mM NaCl, 2.7 mM KCl, 19 mM Tris base (pH 7.4)).

Construction of gfp Reporter Fusions

A trimethoprim resistance cassette was obtained as a *Sma*I fragment from plasmid p34S-Tp (40). The cassette was cloned into *Sph*I-digested and blunt-ended plasmid pPROBE'-gfp[LVA] to obtain pPROBE'-gfp[LVA]Tp. This vector contains a promoterless *gfp* gene (41). DNA fragments containing the promoter regions of *entC*, *ybtA*, *psn*, and *iucA* were amplified by PCR using *Vent* polymerase, gel-purified, and cloned into *Sma*I-digested pPROBE'-gfp[LVA]Tp plasmid. Plasmids were introduced in *E. coli* DH5 α -*lpir* and then mobilized into *Klebsiella* by triparental conjugation using the helper strain *E. coli* HB101/pRK2013.

Klebsiella pneumoniae Anti-inflammation

Luciferase Activity and GFP Fluorescence Measurements

Overnight cultures of the reporter strains were diluted 1/10 in fresh LB medium and incubated for 3 h at 37 °C on an orbital incubator shaker (180 rpm). The cultures were harvested ($4000 \times g$ for 20 min) and resuspended to an A_{600} of 1.0 in PBS. Luciferase activity and GFP fluorescence were determined as described previously and expressed as relative light units (RLU) or relative fluorescence units (RFU) (42). All measurements were performed in triplicate on at least three independent occasions.

Adhesion and Internalization Assays

Bacteria adhesion and internalization to A549 cells were determined as our group described previously (8). The results are expressed as cfu/well. Experiments were carried out in duplicate on at least three independent occasions.

IL-8 Stimulation Assay

A549 cells, seeded in 24-well plates, were infected for 2 h and then washed twice with PBS, and fresh medium plus gentamicin (100 $\mu\text{g}/\text{ml}$) was added. Supernatants were recovered after 12 h, cell debris was removed by centrifugation, and samples were frozen at -80 °C. IL-8 levels in the supernatants were determined using a commercial ELISA (eBioscience) with a sensitivity of <2 pg/ml. Experiments were run in duplicate and repeated at least three independent times.

Immunoblotting

Eukaryotic proteins were resolved by standard 10% SDS-PAGE and electroblotted onto nitrocellulose membranes. Membranes were blocked with 4% skim milk in TBST, and protein bands were detected with specific antibodies using chemiluminescence reagents and a GeneGnome chemiluminescence imager (Syngene). Immunostainings for $\text{I}\kappa\text{B}\alpha$ were performed using polyclonal rabbit anti- $\text{I}\kappa\text{B}\alpha$ (1:1,000, Cell Signaling) antibodies. Immunostainings to assess phosphorylation of p38, p44/42, and JNK MAPKs were performed using polyclonal rabbit, anti-phospho-p38, anti-phospho-p44/42, and anti-phospho-JNK antibodies, respectively (all used at 1:1000; Cell Signaling). Blots were re probed with the polyclonal antibody anti-human tubulin (1:3000, Sigma) to control that equal amounts of proteins were loaded in each lane.

Small Interfering RNA (siRNA)

Transfection of siRNAs was performed at the time of cell seeding in a 96-well plate format (2×10^4 cells/well). LipofectamineTM 2000 transfection reagent (Invitrogen) was used following the manufacturer's instructions. Transfection experiments were carried out in Opti-MEM reduced serum medium (Invitrogen). siRNAs were used at a concentration of 20 nM, and experiments were carried out 48 h after transfection. The knockdown efficiency of the siRNAs targeting NOD1, TLR2, TLR4, and EGFR was verified previously (22, 24).

Murine Infection Model

Mice were treated in accordance with the Directive of the European Parliament and the Council on the Protection of Ani-

mals Used for Scientific Purposes (Directive 2010/63/EU) and in agreement with the Bioethical Committee of the University of the Balearic Islands. This study was approved by the Bioethical Committee of the University of the Balearic Islands (authorization number 1748).

Five-to-seven-week-old female CD-1 mice (Harlan) were infected as described previously by our group (8). Non-infected mice were inoculated with 20 μl of PBS. At 24 h post-infection, mice were euthanized by cervical dislocation. Tissues were rapidly dissected for bacterial load determination, and half of the lungs were immediately frozen in liquid nitrogen and stored at -80 °C until purification of RNA was carried out.

RNA Purification and Real Time Quantitative PCR (RT-qPCR)

RNA from lungs was purified as described by us (8). cDNA was obtained by retrotranscription of 1 μg of total RNA using the M-MLV reverse transcriptase (Sigma). The reaction included one step to eliminate traces of genomic DNA. RT-qPCR analyses were performed using an iCycler real-time PCR instrument (Bio-Rad). Reactions were performed in 25 μl containing 12.5 μl of KAPA SYBR[®] FAST qPCR kit master mix (KapaBiosystems), each primer at 0.2 μM , and 50 ng of cDNA. Relative quantities of mRNAs were obtained using the comparative threshold cycle ($\Delta\Delta\text{C}_T$) method by normalizing to *hprt1*.

Bacteria were grown at 37 °C in 5 ml of LB medium on an orbital incubator shaker (180 rpm) until an A_{600} of 0.3 was reached. RNA was purified following an established protocol (43). cDNA was obtained by retrotranscription of 2 μg of total RNA using commercial M-MLV reverse transcriptase (Sigma) and random primers mixture (SABiosciences, a Qiagen company). 50 ng of cDNA was used as a template in a 25- μl reaction. RT-PCR analyses were performed with a Smart Cycler real-time PCR instrument (Cepheid, Sunnyvale, CA) using a KapaSYBR Fast qPCR kit as recommended by the manufacturer (Cultek). SYBR Green dye fluorescence was measured at 521 nm. cDNAs were obtained from two independent extractions of mRNA, and each one was amplified by RT-qPCR on two independent occasions. Relative quantities of *wabM* mRNAs were obtained using the comparative threshold cycle ($\Delta\Delta\text{C}_T$) method by normalizing to the *rpoD* gene.

Statistical Analysis

Results were analyzed by analysis of variance (ANOVA) or with a one-tailed *t* test followed by a Bonferroni contrast correction for multiple testing using GraphPad Prism software (GraphPad Software Inc.). Results are given as the means \pm S.D. A *p* value of <0.05 was considered statistically significant.

Results

High-throughput Screening to Identify K. pneumoniae Loci Involved in Attenuating NF- κ B Activation—We developed an assay suitable for identifying the *K. pneumoniae* loci required to block activation of the NF- κ B pathway. A new indicator cell line was engineered by transfection of the human epithelial cell line A549 with the reporter vector pNIFTY2-SEAP (InvivoGen). Three clones were selected, A549-SEAP A2, D2, and D4, and control experiments were carried out to determine whether different stimuli known to activate NF- κ B induce the secretion

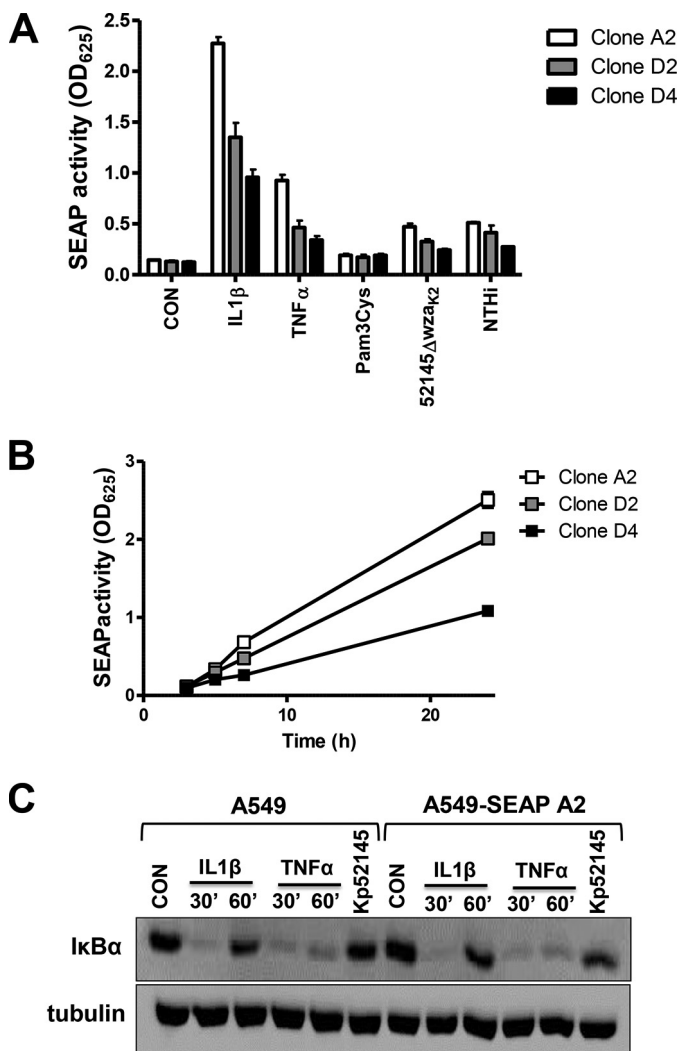


FIGURE 1. Construction of a NF-κB reporter cell line. *A*, SEAP levels released by three clones of A549 cells stably transfected with NF-κB reporter pNifty 2-SEAP vector. Cells were left untreated (control (CON), white bars), treated with IL-1β (10 ng/ml), TNFα (10 ng/ml), or TLR2 agonist Pam3Cys (100 ng/ml), or infected with *Klebsiella* capsule mutant (52145-Δwza_{K2}) or nontypable *Haemophilus influenzae* 398 (NTHi). Scale bars represent mean ± S.E. (*n* = 3). *B*, time course of SEAP levels released by the selected clones treated with IL-1β (10 ng/ml) (*n* = 3). *C*, immunoblot analysis of IκBα and tubulin levels in lysates of A549 and clone A549-SEAP A2 cells were left untreated (control), treated with IL-1β (10 ng/ml) or TNFα (50 ng/ml) for the indicated time, or infected for 3 h with Kp52145. Data are representative of three independent experiments.

of SEAP (Fig. 1A). Clone A2 secreted higher amounts of SEAP than the other two clones after cells were challenged with different stimuli (Fig. 1A). Time course experiments showed that clone A2 secreted higher levels of SEAP over time than the other two clones upon challenge with IL-1β (10 ng/ml) (Fig. 1B). Western blot analysis of IκBα levels showed no differences between A549 cells and A549-SEAP A2 after stimulation with different agonists (Fig. 1C). Clone A2 was selected for screening purposes.

SEAP levels induced by Kp52145 were not significantly different than those observed in non-infected cells (Fig. 2A). In contrast, the *cps*, *ompA* mutants, and the *cps-ompA* double mutant did trigger the secretion of SEAP. We have already reported that these strains elicit the activation of NF-κB (8). The differences observed between strains are consistent with

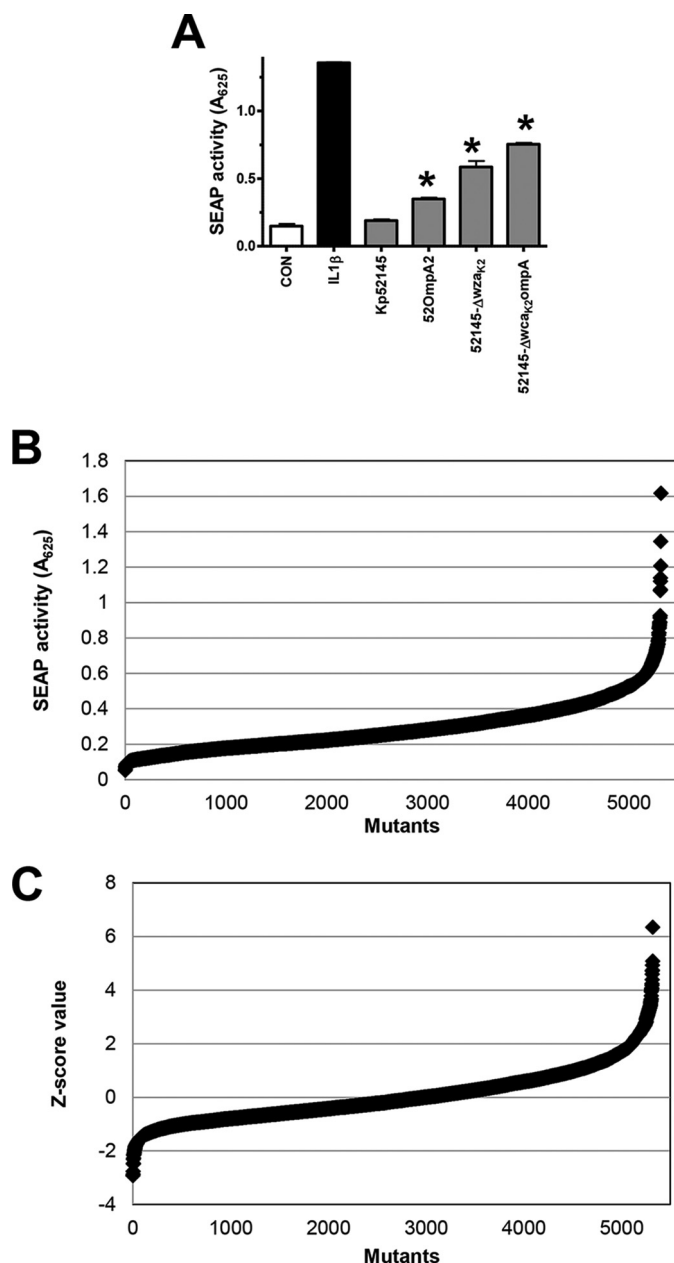


FIGURE 2. High-throughput screening for the identification of *K. pneumoniae* factors implicated in attenuation of NF-κB activation. *A*, SEAP levels released by A549-SEAP A2 cells left untreated (control (CON), white bars), treated with IL-1β (10 ng/ml) (black bars), or infected with Kp52145, 52OmpA2, 52145-Δwza_{K2}, or 52145-Δwca_{K2}ompA (gray bars). Scale bars represent mean ± S.E. (*n* = 3) **p* < 0.05 (results are significantly different from the results for Kp52145; one-tailed *t* test). *B*, distribution of SEAP levels released by A549-SEAP A2 cells infected with the mutants. *C*, distribution of Z score data of SEAP levels.

data from our laboratory showing the relative importance of CPS and OmpA to attenuate NF-κB activation (8).

The assay was then transferred from a 24-well format to a 96-well format by optimizing culture conditions, cell number/well, multiplicity of infection, time of contact, and time of detection of secreted SEAP. To determine the quality of the assay, the Z' factor (31) was calculated taking as a negative control SEAP levels secreted by cells infected with the wild-type strain and as a positive control SEAP levels secreted by cells infected with the *ompA* mutant or cells stimulated with IL-1β.

Klebsiella pneumoniae Anti-inflammation

In our case, the resulting Z' factors were 0.73 and 0.86 for the respective comparisons. The Z' factor is a screening window coefficient indicating the capability of a hit identification for a given assay at the defined screening conditions. Z' factors higher than 0.5 indicate that an assay is robust enough for a high-throughput screening (31).

To identify *Klebsiella* loci involved in attenuating NF- κ B activation, we examined a bank of 5320 transposon mutants. Each mutant was tested individually. For candidate selection the standard Z score normalization procedure was applied and mutants with a Z score ≥ 2 were selected. We also selected those mutants that induce SEAP levels higher than $A_{625} > 0.5$, which represents a 2-fold increase in the SEAP levels induced by the wild type. The distribution of A_{625} values and the Z scores of the mutant library are shown in Fig. 2, B and C. Following the first round of screening, 522 mutants (10% of the transposon library) were considered candidates for validation.

To validate the selected candidates, each one was tested individually in four independent screening rounds. Candidates were considered validated if they induced SEAP levels higher than $A_{625} > 0.5$ in at least two of four independent experiments upon infection of the A549-SEAP A2 cells. Using this validation criterion, 114 Kp52145 mutants were considered validated (Table 2). Control experiments showed that all mutants grew in LB agar plates, LB broth, and RPMI 1640 complete medium, whereas five and three mutants displayed growth deficiencies when cultivated in M9 agar plates supplemented with glucose and citrate, respectively (Table 2).

Transposon insertion sites were determined by genomic sequencing using primer tpnRL17. The sequences obtained were compared with the Kp52145 genome and plasmid sequences (GenBankTM accession numbers FO834904, FO834905, and FO834906) and to the reference sequence of *K. pneumoniae* strain MGH78578 (GenBankTM accession number CP000647.1). Ninety-nine insertions were found in the chromosome, whereas nine and six were located in plasmid 1 and plasmid 2, respectively. The MicrobesOnline and STRING databases were interrogated to annotate the loci. Thirty of them were related to metabolism, twenty were included in the category outer membrane and envelope-related genes, nine in transport, eight in regulation of transcription, seven in the stress response category, and four in the category of DNA-related processes (Table 2). Interestingly, six of the insertions were located in regions of the Kp52145 genome not present in other *Klebsiella* genomes (27). Nineteen mutants had the transposon inserted in non-coding regions of the genome, and 17 were located within the coding region of hypothetical proteins.

In summary, our high-throughput genetic screen mining a *K. pneumoniae* transposon library led to the identification of 114 mutants that triggered the activation of NF- κ B. In the following sections we describe the characterization of the mutants on the enterobactin siderophore, WaaL encoding the O-antigen ligase and pullulanase T2SS. We selected the enterobactin and ligase mutants because iron-scavenging systems and LPS are two well characterized *Klebsiella* virulence determinants, although their contributions to attenuating inflammation have not been evaluated previously. On the other hand, we chose to

investigate the *Klebsiella* pullulanase T2SS because its role in *Klebsiella* virulence had not been established.

Analysis of the Enterobactin Mutant—One transposon insertion was identified in the enzyme EntF, a component of the biosynthetic machinery of the enterobactin siderophore (44). Enterobactin is one of the three siderophores expressed by Kp52145 (27). Enterobactin is expressed in the lungs of infected mice, and an enterobactin mutant is attenuated (9). As anticipated (9), the doubling times of the *entF* mutant slowed when grown in LB supplemented with the iron chelator 2-2'-dipyridyl (Fig. 3A). Similar rates of growth were observed when the wild type and the mutant were grown in LB or RPMI 1640 (data not shown).

We sought to determine whether the other two siderophores encoded by Kp52145, aerobactin and yersiniabactin, are implicated in attenuation of inflammation. However, the SEAP levels induced by the aerobactin mutant, strain 52iutA, and the yersiniabactin mutant, strain 52irp1, were not significantly different than those induced by the wild-type strain (Fig. 3B). In contrast, SEAP levels induced by the *entF* mutant were higher than those induced by Kp52145, which in turn, were not significantly different than those found in the supernatant of non-infected cells (Fig. 3B). In the canonical NF- κ B activation pathway, nuclear translocation of NF- κ B is preceded by phosphorylation and subsequent degradation of I κ B α (45). Immunoblot analysis demonstrated that the *entF* mutant induced the degradation of I κ B α in A549 cells (Fig. 3C).

These findings suggested that enterobactin, but not the other siderophores, was expressed under our infection conditions. To monitor the transcription of the siderophores quantitatively, transcriptional fusions were constructed in which a promoterless *gfp* gene was under the control of the *iutA*, *psn*, *ybtA*, and *entC* promoter regions (see "Experimental Procedures"). *iutA* has been used previously to study aerobactin expression and *psn* and *ybtA* to analyze yersiniabactin expression, whereas *entC* has been used to determine enterobactin expression (9). *gfp* fusions were introduced into Kp52145, and fluorescence was determined after growing the reporter strains in LB, LB supplemented with iron chelator 2-2'-dipyridyl, or RPMI 1640 (Fig. 3D). The *entC::gfp* fusion was the only one expressed under iron-limited conditions, LB plus 2-2'-dipyridyl and RPMI 1640 (Fig. 3D). It has been reported previously that bacteria up-regulate iron-scavenging systems when grown in tissue culture medium (46). Further confirming this finding, the addition of FeCl₃ to RPMI 1640 decreased the expression of the *entC::gfp* fusion by 75% (9106 \pm 850 RFU and 2190 \pm 323 RFU, respectively; $p < 0.05$, one-tailed t test).

Collectively, our data are consistent with a model in which *K. pneumoniae* experiences a poor iron environment when infecting A549 cells, hence leading to the activation of the siderophore enterobactin. There are reports suggesting that siderophores may inhibit immune responses (47), hence making it possible that enterobactin may directly attenuate NF- κ B activation. However, it has been also shown that *K. pneumoniae* CPS expression is down-regulated in iron-poor media (48). Therefore, the involvement of enterobactin in attenuating NF- κ B activation would be indirect considering that CPS is known to prevent NF- κ B activation (20, 21). Indirectly support-

TABLE 2
K. pneumoniae transposon mutants validated in the screening

Function	Mutant code	Gene	Kp52145 locus tag	MGH78578 locus tag	Growth ^a	
Metabolism						
Oxydoreductases	P017C4	Pyrroline-5-carboxylate reductase	KpST66_1303	KPN_00329	N/N	
	P019E9	Putative oxidoreductase	KpST66_1547	KPN_00505	N/Y	
	P033F6	Cytochrome bd-I oxidase subunit I	KpST66_2291	KPN_01153	Y/Y	
	P037H10	Putative alcohol dehydrogenase <i>groES</i>	KpST66_2527	KPN_01466	Y/Y	
	P037H6	γ -Aminobutyraldehyde dehydrogenase	KpST66_3019	KPN_01924	Y/Y	
	P035C5	Uncharacterized protein conserved	KpST66_3673	KPN_02456	Y/Y	
	P018C10	NADH-quinone oxidoreductase subunit F	KpST66_3892	KPN_02674	Y/Y	
	P006E12	Putative uncharacterized protein	KpST66_0795	KPN_03309	Y/Y	
	P026H10	<i>cueO</i>	KpST66_4209	KPN_00131	Y/Y	
	P036D12	NADPH-dependent preQ0 reductase	KpST66_3564	Unknown function	Y/Y	
Carbohydrates	P043B5	<i>N</i> -Acetylmuramic acid 6-phosphate etherase	KpST66_2662	KPN_01553	Y/Y	
	P037E12	Deoxyribose-phosphate aldolase	KpST66_2812	KPN_01702	Y/Y	
	P029H4	Putative Carboxymuconolactone decarboxylase family protein	KpST66_1120	KPN_03003	Y/Y	
	P009G9	Propanediol dehydratase medium subunit <i>pduD</i>	KpST66_0902	KPN_03206	Y/Y	
	P025D5	Altronate hydrolase	KpST66_0586	KPN_03519	Y/Y	
	P006H10	L(+)-tartrate dehydratase subunit β (L-TTD β)	KpST66_0481	KPN_03639	Y/Y	
	P040B5	C-terminal of putative uncharacterized protein <i>yhjS</i>	KpST66_0231	KPN_03886	Y/Y	
	Lipids	P025C1	Putative acetyltransferase	KpST66_0118	KPN_03989	Y/Y
		P026E12	Putative acetyltransferase	KpST66_0118	KPN_03989	Y/Y
		P035E6	acyl carrier protein	KpST66_3624	A79E_1666	Y/Y
P035D1		Glycerol dehydratase, small subunit	KpST66_0621	KPN_03488	Y/Y	
P038H3		Putative uncharacterized protein	KpST66_4890	Unknown function	Y/Y	
P007C12		Triacylglycerol lipase	pKpST66-1_0006	Unknown function	Y/Y	
Amino acids	P038C2	C-terminal region of triacylglycerol lipase	pKpST66-1_0006	Unknown function	Y/Y	
	P019F6	Dihydroxy-acid dehydratase	KpST66_4589	KPN_04270	N/N	
	P037B8	Ketol-acid reductoisomerase	KpST66_4586	KPN_04273	Y/N	
Others	P044A12	Uncharacterized protein <i>ymjA</i>	KpST66_2352	KPN_01217	Y/Y	
	P040B2	Enterobactin synthase component F, <i>entF</i>	KpST66_1661	KPN_00605	Y/Y	
	P005E9	Cyclic diguanylate phosphodiesterase	KpST66_4039	KPN_02828	Y/Y	
	P037G9	Putative amidohydrolase	KpST66_1569	KPN_00523	Y/Y	
Envelope						
Protein secretion	P044G9	Putative member of ShlA/HecA/FhaA exoprotein family	KpST66_1736	KPN_00676	Y/Y	
	P035G10	C-terminal of putative uncharacterized protein ECs0126	KpST66_4210	KPN_00130	Y/Y	
	P038F11	Pullulanase secretion envelope <i>pulC</i>	KpST66_4179	KPN_00161	Y/Y	
	P044E5	Putative hemolysin activator protein	KpST66_1737	KPN_00677	Y/Y	
	P020H1	Acriflavine resistance protein A, <i>acrA</i>	KpST66_0069	KPN_04039	Y/Y	
	P018H5	Auxiliary transport protein, membrane fusion protein (MFP) family	KpST66_3658	Unknown function	Y/Y	
	P029G11	Putative plasmid transfer protein	pKpST66-2_0082	Unknown function	Y/Y	
	Peptidoglycan	P021E7	Penicillin-binding protein 1B	KpST66_4173	KPN_00164	Y/Y
		P035C6	<i>ampG</i> muropeptide MFS transporter	KpST66_1369	KPN_00395	Y/Y
		P017C10	Putative β -lactamase-like	KpST66_2943	KPN_01845	Y/Y
Adhesion	P043A12	TPR repeat lipoprotein	KpST66_0546	KPN_03571	Y/Y	
	P018G12	Putative fimbrial chaperone protein	KpST66_4961	KPN_04471	Y/Y	
LPS	P043D6	<i>traH</i>	pKpST66-1_0057	KPN_pKPN4p07153	Y/Y	
	P020C10	O-antigen ligase, <i>waal</i>	KpST66_0145	KPN_03966	Y/Y	
	P025F5	O-antigen ligase, <i>waal</i>	KpST66_0144	KPN_03966	Y/Y	
Others	P050B3	putative OmpA domain protein	KpST66_0945	KPN_03169	Y/Y	
	P018C9	Putative outer membrane protein	pKpST66-1_0065	AY703481	Y/Y	
	P018F7	Putative outer membrane protein	pKpST66-1_0065	AY703481	Y/Y	
	P045A8	Phage tail fiber protein	KpST66_2280	A79E_3050	Y/Y	
	P021E9	Putative fusaric acid resistance domain protein	KpST66_3659	KPN2242_15265	Y/Y	
Transport						
	P025C6	Putative extracellular solute-binding protein, family 3	KpST66_1626	KPN_00572	Y/Y	
	P025D4	Putative extracellular solute-binding protein, family 3	KpST66_1626	KPN_00572	Y/Y	
	P007C1	Putative ABC transporter	KpST66_2950	KPN_01850	Y/Y	
	P007H1	ABC-type dipeptide/oligopeptide/nickel transport systems, permease component	KpST66_3752	KPN_02536	Y/Y	
	P051H4	Putative high-affinity nickel-transporter	KpST66_1081	KPN_03047	Y/Y	
	P038C9	D-Galactonate transporter	KpST66_0012	KPN_04094	Y/Y	
	P018G8	Spermidine/putrescine import ATP-binding protein <i>potA</i>	KpST66_4976	KPN_04456	Y/Y	
	P008H2	Putative ascorbate-specific PTS system enzyme IIC	KpST66_4846	KPN_04586	Y/Y	
	P034F5	Putative periplasmic-binding protein	KpST66_1095	KPN_03033	Y/Y	
	Transcription	P034C6	Threonyl-tRNA synthetase	KpST66_3559	Unknown function	Y/Y
P006G10		Transcriptional activator <i>cadC</i>	KpST66_1540	KPN_00498	Y/Y	
P019F8		HTH-type transcriptional regulator YcgE	KpST66_1826	KPN_00783	Y/Y	
P009C4		Putative transcriptional regulatory protein TyrR	KpST66_2445	KPN_01305	Y/Y	
P012G4		Putative Mgl repressor	KpST66_4978	KPN_04454	Y/Y	
P041F4		Putative protein Ytfj	KpST66_4824	KPN_04609	Y/Y	
P019G5		Putative TetR family transcriptional regulator	KpST66_3249	A79E_2099	Y/Y	
P038F5		Formylmethionylaminoacyl-tRNA deformylase	pKpST66-2_0076	LV116 (pLVPK)	Y/Y	
Stress		P049G10	Chaperone <i>surA</i>	KpST66_4290	KPN_00050	N/Y
	P046C4	Putative 2-component transcriptional regulator	KpST66_3517	KPN_02412	Y/Y	
	P046H11	Protease III	KpST66_0878	KPN_03230	Y/Y	
	P025H2	Putative uncharacterized protein <i>yhbO</i>	KpST66_0556	KPN_03561	Y/Y	
	P024H5	33-kDa chaperonin	KpST66_0345	KPN_03772	Y/Y	
	P007C4	putative α -helix	KpST66_0117	KPN_03990	N/Y	
	P044A10	DNA helicase II	KpST66_4551	KPN_04312	Y/Y	
DNA	P012H7	Cytoskeleton protein <i>rodZ</i>	KpST66_4055	KPN_02846	Y/Y	
	P029G3	Putative DNA-processing protein	KpST66_0252	KPN_03865	Y/Y	
	P043D4	Putative integrase	KpST66_0789	Unknown function	Y/Y	
	P027A12	Putative Isrs016-transposase <i>orfB</i>	pKpST66-2_0103	Unknown function	Y/Y	

TABLE 2—Continued

Function	Mutant code	Gene	Kp52145 locus tag	MGH78578 locus tag	Growth ^a
Hypotheticals	P018D10	Putative lipoprotein	KpST66_3367	Unknown function ^b	Y/Y
	P044H7	Hypothetical CDS	KpST66_0778	Unknown function ^b	Y/Y
	P024E6	Putative uncharacterized protein	KpST66_0788	Unknown function ^b	Y/Y
	P034C10	Putative uncharacterized protein	KpST66_4517	Unknown function ^b	Y/Y
	P037F10	Hypothetical CDS	pKpST66-1_0077	Unknown function ^b	Y/Y
	P001G5	Subtilisin-related serine protease	pKpST66-1_0111	Unknown function ^b	Y/Y
	P054G10	Putative uncharacterized protein	KpST66_0786	Unknown function	Y/Y
	P043E4	Hypothetical protein	KpST66_3558	Unknown function	Y/Y
	P053H2	Putative uncharacterized protein	KpST66_2293	KPN_01157	Y/Y
	P013G3	Putative uncharacterized protein	KpST66_2888	KPN_01793	Y/Y
	P020B12	Uncharacterized protein conserved	KpST66_3673	KPN_02457	Y/Y
	P043G3	Cyclic diguanylate phosphodiesterase domain protein	KpST66_0830	KPN_03274	Y/Y
	P043G2	Putative uncharacterized protein	KpST66_0943	KPN_03171	Y/Y
	P025G5	Putative uncharacterized protein	KpST66_0942	KPN_03172	Y/Y
	P045H10	Hypothetical CDS	pKpST66-1_0020	KPN_pKPN3p05993	Y/Y
	P034F4	Hypothetical CDS	pKpST66-2_0092	KP1_p117	Y/Y
	P043D5	Putative uncharacterized protein	pKpST66-2_0058	LV102a (pLVPK)	Y/Y
	Non-coding regions	P007G6	Between C4-type zinc finger protein, DksA/TraR family and GTP cyclohydrolase I	KpST66_3567 and KpST66_3568	Unknown function
P009H6		Between LuxR-transcriptional regulator and a hypothetical protein	KpST66_1827 and KpST66_1828	Between KPN_00784 and KPN_00785	Y/Y
P048H7		Between putative glutathione S-transferase and D-alanyl-D-alanine carboxypeptidase; penicillin-binding protein	KpST66_1922 and KpST66_1923	Between KPN_00870 and KPN_00871	Y/Y
P043E6		Between <i>deoR</i> and <i>deoC</i>	KpST66_2811 and KpST66_2812	Between KPN_01701 and KPN_01702	Y/Y
P038G8		Between aspartate-semialdehyde dehydrogenase and a putative transcriptional regulator	KpST66_2862 and KpST66_2863	Between KPN_01773 and KPN_01774	Y/Y
P019E6		Between putative transposase IS4 and a putative ARAC-type regulatory protein	KpST66_2869 and KpST66_2870	Between KPN_01779 and KPN_01780	Y/Y
P037E9		Between putative FAD/FMN-containing dehydrogenases and a hypothetical protein	KpST66_3144 and KpST66_3145	Between KPN_02042 and KPN_02043	Y/Y
P022H9		Between putative enzyme and hypothetical protein	KpST66_3460 and KpST66_3461	Between KPN_02355 and KPN_02356	Y/Y
P025H3		Between putative transcriptional regulator and putative arylsulfatase regulator	KpST66_4042	Between KPN_02830 and KPN_02831	Y/Y
P050B12		Between <i>iap</i> and <i>cysH</i>	KpST66_0997 and KpST66_0998	Between KPN_03116 and KPN_03117	Y/Y
P005D9		Between <i>uppP</i> and <i>folB</i>	KpST66_0645 and KpST66_0646	Between KPN_03461 and KPN_03462	Y/Y
P015G5		Between two hypothetical proteins	KpST66_0630 and KpST66_0631	Between KPN_03477 and KPN_03478	Y/Y
P006E8		Between <i>yhdP</i> and <i>rng</i>	KpST66_0465 and KpST66_0466	Between KPN_03654 and KPN_03655	Y/Y
P028H3		Between <i>ibpA</i> and <i>yidQ</i>	KpST66_0014 and KpST66_0015	Between KPN_04091 and KPN_04092	Y/Y
P041H3		Between <i>rmlI</i> and <i>ygiF</i>	KpST66_5016 and KpST66_5017	Between KPN_04415 and KPN_04416	Y/Y
P024D12		Between <i>yhaM</i> and <i>psiE</i>	KpST66_5012 and KpST66_5013	Between KPN_04419 and KPN_04420	Y/Y
P051G11		Between <i>phnA</i> and <i>proP</i>	KpST66_4928 and KpST66_4929	Between KPN_04502 and KPN_04503	Y/Y
P014F6		Between <i>YgfA</i> and <i>traM</i>	pKpST66-1_0029 and pKpST66-1_0030	Between KPN_pKPN3p06000 and KPN_pKPN3p06001	Y/Y
P014E6	Between hypothetical protein and <i>iutA</i>	pKpST66-2_0063 and pKpST66-2_0064	Between LV106-LV107	Y/Y	

^a Growth in M9 agar plates was supplemented with either glucose or citrate as the carbon source. N, no growth; Y, growth.

^b Present only in the Kp52145 genome.

ing the latter evidence, the *entF* mutant expressed 50% less cell-bound CPS than the wild-type strain (6.11 ± 2.99 mg/10⁷ cells and 11.49 ± 1.91 mg/10⁷ cells, respectively; $p < 0.05$, one-tailed *t* test), and the activity of the transcriptional *cps::lucFF* fusion was 80% lower in the *entF* mutant background than in the wild-type one ($3.1 \times 10^6 \pm 16,000$ RLU and $1.7 \times 10^7 \pm 34,000$ RLU, respectively; $p < 0.01$, one-tailed *t* test). Further confirming the inverse correlation between the CPS levels and the adhesion and internalization to epithelial cells (49), the *entF* mutant adhered to and was internalized by A549 cells in higher numbers than the wild type (Fig. 3E). Altogether, this evidence suggests that *entF*-induced NF- κ B activation could be explained by the reduced CPS levels expressed by the mutant. To validate this hypothesis, we asked whether the SEAP levels induced by the *entF* mutant were significantly different than those triggered by the *cps* mutant or the double *cps-entF* mutant. The data shown in Fig. 3F demonstrate that indeed there were no differences in the SEAP levels triggered by any of the three strains.

In aggregate, our findings revealed that enterobactin was activated under our tissue culture infection conditions and that the lack of the siderophore was linked to a reduced CPS expression. In turn, the low CPS levels underlined the NF- κ B activation induced by the *entF* mutant.

Analysis of the LPS Polysaccharide Mutants—Two transposon insertions were identified in the *waaL* gene. *WaaL* is the O-antigen ligase responsible for ligating the LPS O-polysaccharide (OPS) to the core (50). LPS analysis confirmed that neither of the mutants express OPS, and the LPS pattern was similar to that displayed by a nonpolar *waaL* mutant (50) (Fig. 4A). *waaL* is encoded within the operon responsible for the synthesis of the LPS core (50), hence making it possible that the transposon insertion would affect the expression of downstream genes. However, RT-qPCR experiments showed that the expression of the downstream gene *wabM* was not significantly different between the wild type and the transposon mutants (data not shown). *WabM* encodes the glycosyltransferase, adding the first glucose residue of the core where the OPS is attached (50). The SEAP levels induced by the ligase mutants were significantly higher than those induced by the wild type (Fig. 4B). No significant differences were found in the SEAP levels induced by any of the mutants (Fig. 4B).

To rule out the possibility that the non-ligated OPS exerted an unanticipated effect on *Klebsiella* physiology, we tested the *glf* glycosyltransferase mutant, strain 52glf. *Glf* is a UDP-galactopyranose mutase essential for OPS biosynthesis (51). Immunoblot analysis revealed that the ligase and OPS mutants triggered the degradation of $\text{I}\kappa\text{B}\alpha$ in A549 cells in contrast to the

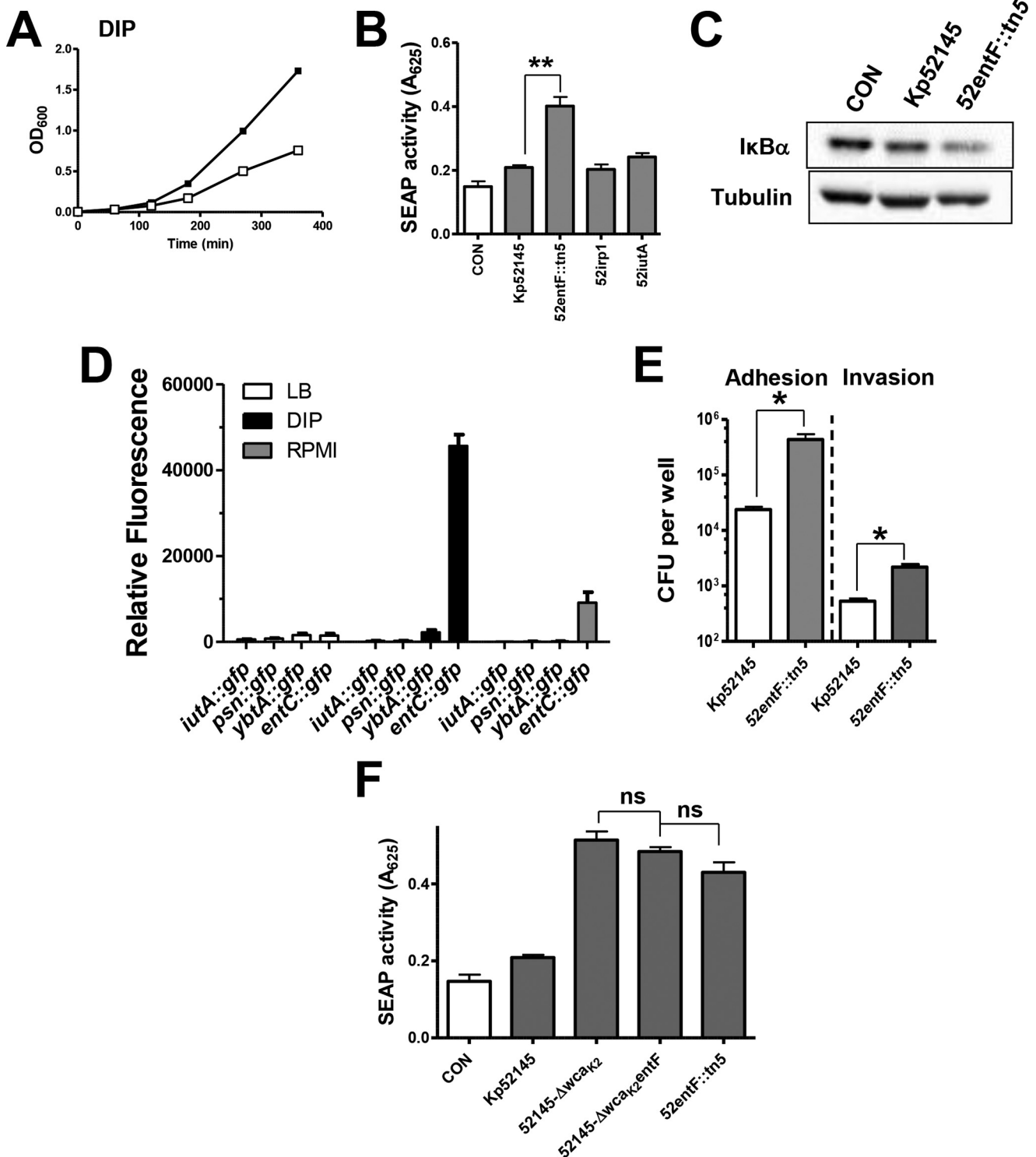
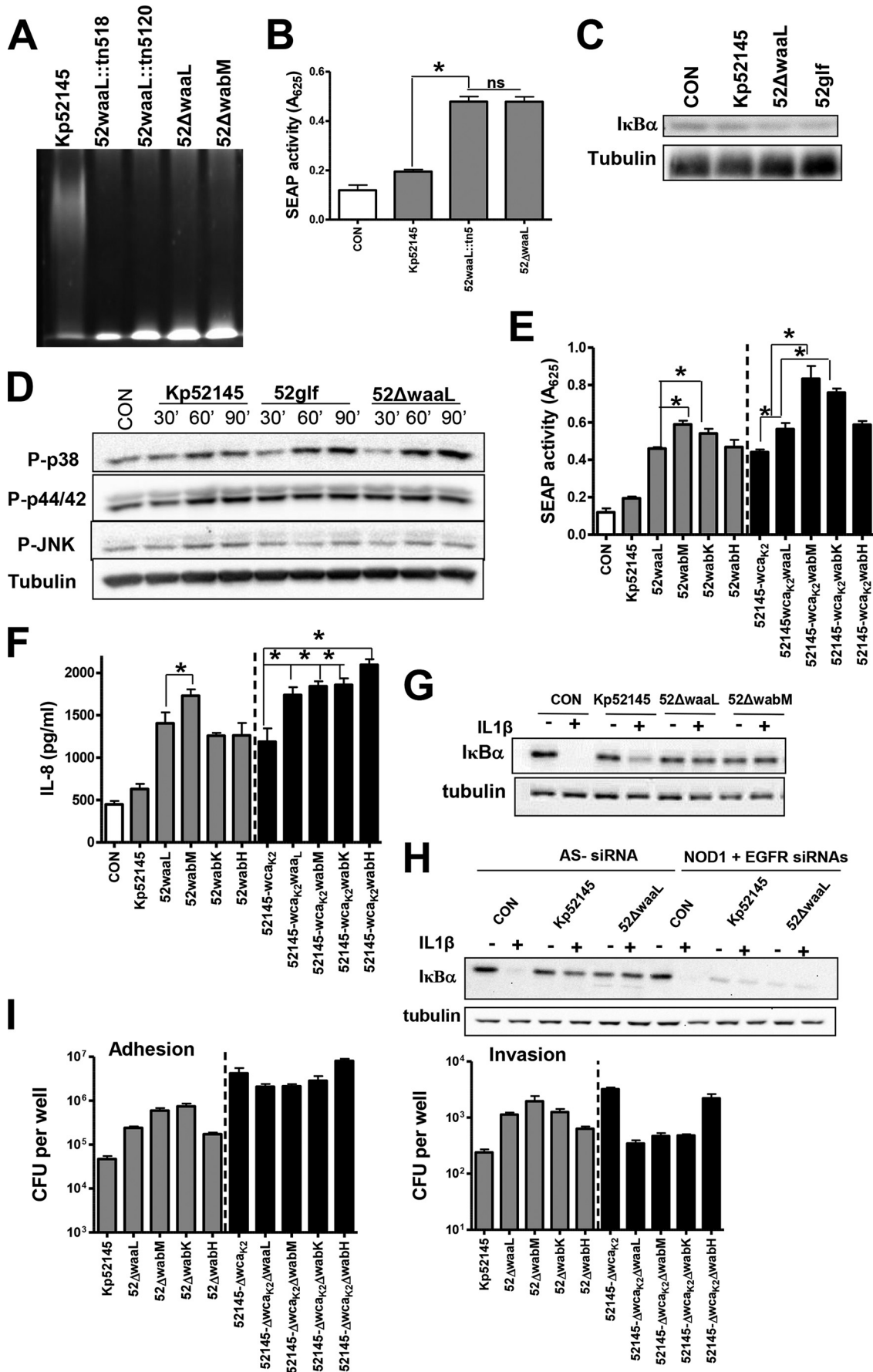


FIGURE 3. Indirect role of *K. pneumoniae* enterobactin in attenuation of NF- κ B activation. *A*, growth of Kp52145 (black symbols) and enterobactin mutant (52entF::tn5, white symbols) in LB supplement with 2-2'-dipyridyl (DIP). *B*, SEAP levels released by A549-SEAP A2 cells left untreated (control (CON)) or infected with different *Klebsiella* strains. Scale bars represent mean \pm S.E. ($n = 3$). *C*, immunoblot analysis of I κ B α and tubulin levels in A549 cells left uninfected (control) or infected with Kp52145 or enterobactin mutant (52entF::tn5) for 3 h. Data are representative of three independent experiments. *D*, analysis of the expression of *iutA*, *psn*, *ybtA*, and *entC* by Kp52145 carrying the transcriptional fusions *iutA::gfp*, *psn::gfp*, *ybtA::gfp*, and *entC::gfp*. Bacteria were grown in LB (white bars), RPMI 1640 (gray bars), or LB supplement with 2-2'-dipyridyl (DIP, black bars). Data are presented as mean \pm S.D. ($n = 3$). *E*, adhesion (left bars) and internalization (right bars) of *Klebsiella* strains to A549 cells ($n = 3$). *F*, SEAP levels released by A549-SEAP A2 cells left untreated (control, white bar) or infected with Kp52145, capsule mutant (52145- Δ wca_{K2}), enterobactin mutant (52entF::tn5), or capsule and enterobactin double mutant (52145- Δ wca_{K2}entF). Scale bars represent mean \pm S.E. ($n = 3$). ns (not significant), $p > 0.05$; *, $p < 0.05$; **, $p < 0.01$ (one-tailed *t* test).



wild-type strain (Fig. 4C). Many cellular stimuli also activate MAPK pathways. The activation of the three MAPKs (p38, JNK, and p44/42) occurred through phosphorylation of serine and threonine residues. All strains induced the phosphorylation of the three MAPKs; however the phosphorylation of p38 and p44/42 was more apparent in cells infected with the ligase and OPS mutants than in those infected with the wild type (Fig. 4D). No differences were observed between both mutants (Fig. 4, C and D). Altogether, these results support the view that Kp52145 OPS is required to attenuate inflammation.

waaL mutants express similar levels of CPS as the wild type (Ref. 50 and data not shown). To assess the relative contribution of CPS and OPS to attenuate NF- κ B activation, we investigated whether the absence of OPS increases SEAP levels induced by the *cps* mutant. Results shown in Fig. 4E confirmed that this was the case.

To further analyze the contribution of the LPS polysaccharide section to the attenuation of NF- κ B activation, we sought to determine whether the LPS core section plays any role in *Klebsiella* attenuation of NF- κ B activation. *wabM*, *wabK*, and *wabH* mutants lack, in addition to the OPS, the first, second, and third sugars of the LPS core, respectively (50), but they express similar levels of CPS as the wild type (50). The three mutants triggered the secretion of SEAP by infected cells (Fig. 4E). SEAP levels were higher than those induced by the wild type; the levels induced by the *wabM* and *wabK* mutants were also significantly higher than those induced by the *waaL* mutant (Fig. 4E). No significant differences were found between the *wabM* and *wabK* mutants (Fig. 4E). In the genetic background of the *cps* mutant, the *wabM* and *wabK* mutants induced similar levels of SEAP, which were higher than those triggered by the *waaL* mutant (Fig. 4E). SEAP levels induced by the *wabH* mutant were not significantly different than those induced by the *waaL* mutant (Fig. 4E). Comparatively similar results were found when the secretion of IL-8 was evaluated (Fig. 4F). Collectively, these data show that the CPS, the OPS, and the first glucose of the core are bacterial factors required to attenuate the activation of NF- κ B by epithelial cells upon *K. pneumoniae* infection.

Recently, we have shown that Kp52145 attenuates proinflammatory mediator-induced NF- κ B activation (22). This process requires bacteria-cell contact, and removal of bacteria by washing followed by a 1-h gentamicin treatment renders the cells responsive to agonist-induced IL-8 secretion (22). To exert this anti-inflammatory effect, Kp52145 engages NOD1 and EGFR receptors (22, 24). To explore whether the OPS could account for the Kp52145 anti-inflammatory effect, we determined the effect of the *waaL* mutant on IL-1 β -induced I κ B α

degradation using the assay that we described previously (22, 24). Similar to Kp52145, *waaL* attenuated IL-1 β -induced I κ B α degradation (Fig. 4G). As with the wild type, this effect was abrogated in cells in which NOD1 and EGFR were knocked down using siRNA (Fig. 4H).

Control experiments revealed that the ligase and core mutants adhered to A549 cells in higher numbers than the wild type (for each comparison between Kp52145 and the mutants, $p < 0.05$ (one-tailed Student's *t* test)) (Fig. 4I). The adhesion levels of the *wabM* and *wabK* mutants were higher than that of the *waaL* mutant (Fig. 4I). As reported previously (49), strains lacking CPS adhered in higher numbers than CPS-expressing strains (for each comparison between CPS-expressing and CPS-negative strains, $p < 0.01$ (one-tailed Student's *t* test)) (Fig. 4I). In the *cps* mutant background, no significant differences in adhesion between strains were found (Fig. 4I). *waaL* and core mutants were internalized in higher numbers than the wild type (for each comparison between Kp52145 and the LPS mutants, $p < 0.01$ (one-tailed Student's *t* test)) (Fig. 4I). In the *cps* mutant background, however, *waaL*, *wabM*, and *wabK* mutants were internalized in lower numbers than the *cps* mutant (Fig. 4I), and the levels were not significantly different than those of the wild type (for each comparison between Kp52145 and the LPS mutants, $p > 0.05$ (one-tailed Student's *t* test)). Interestingly, *wabH* mutant displayed internalization levels similar to those of the *cps* mutant (Fig. 4I).

Finally, we sought to determine the innate receptor(s) involved in the recognition of the OPS mutant by using as cellular readouts of the NF- κ B-dependent secretion of SEAP and the secretion of IL-8. Almost all TLRs activate cellular signaling pathways through TIR domain-mediated interactions with the adaptor molecule MyD88 (52). To explore the involvement of TLRs in *waaL* mutant-induced cell activation, the function of the MyD88 adaptor molecule was interrupted by siRNA. In MyD88 knocked-down cells, *waaL* mutant induced neither the activation of the NF- κ B reported construct nor the secretion of IL-8 (Fig. 5, A and B, respectively). To further dissect the contribution of TLR-dependent signaling to *waaL* mutant-induced cell activation, TLR2 and TLR4 were knocked down by siRNA. The results shown in Fig. 5 indicate that both receptors contributed to *waaL*-induced cell activation. On the whole, these data suggest that *waaL* mutant induced NF- κ B activation and IL-8 secretion is mediated by TLR4-TLR2-MyD88 pathway.

Analysis of the Pullulanase Mutants—Two transposon insertions were found in the *pulC* and loci. *pulC* is the first locus of the *Klebsiella* T2SS that secretes the enzyme pullulanase encoded by *pula* (53). *yacC* encodes for a lipoprotein containing a domain related to the *puls/outS* family but for which the

FIGURE 4. ***K. pneumoniae* LPS O-polysaccharide is implicated in attenuation of NF- κ B activation.** A, LPS analysis by SDS-PAGE. Data are representative of three independent experiments. B, SEAP levels released by A549 cells left untreated (control (COM), white bar) or infected with Kp52145 or *waaL* mutants (52 Δ waaL::tn5 and 52 Δ waaL). Scale bars represent mean \pm S.E. ($n = 3$). C, immunoblot analysis of I κ B α and tubulin levels in A549 cells left uninfected (control) or infected with the indicated strains for 3 h. Data are representative of three independent experiments. D, immunoblots showing phosphorylated MAPKs and tubulin levels in cell extracts of A549 cells left uninfected (control, time 0) or infected with *K. pneumoniae* strains for different times. The results are representative of three independent experiments. E, SEAP levels released by A549 cells left untreated (control, white bar) or infected with the indicated strains ($n = 3$). F, ELISA of IL-8 released by A549 cells left untreated (control, white bar) or infected for 12 h with the indicated strains ($n = 3$). G and H, immunoblot analysis of I κ B α and tubulin levels in lysates of A549 cells infected with the indicated strains. The cells were left untreated, stimulated with IL-1 β (1 ng/ml, 10 min), infected for 3 h, or infected for 3 h and then stimulated with IL-1 β . In H, the siRNA targets are indicated in the top row of each panel. (AS-, AllStars control siRNA). Data are representative of three independent experiments. I, adhesion (left panel) and internalization (right panel) of *Klebsiella* strains to A549 cells ($n = 3$). *, $p < 0.05$ (one-tailed *t* test); ns (not significant), $p > 0.05$ (one-tailed *t* test). In E and F, CPS-expressing strains, gray bars; CPS negative strains, black bars.

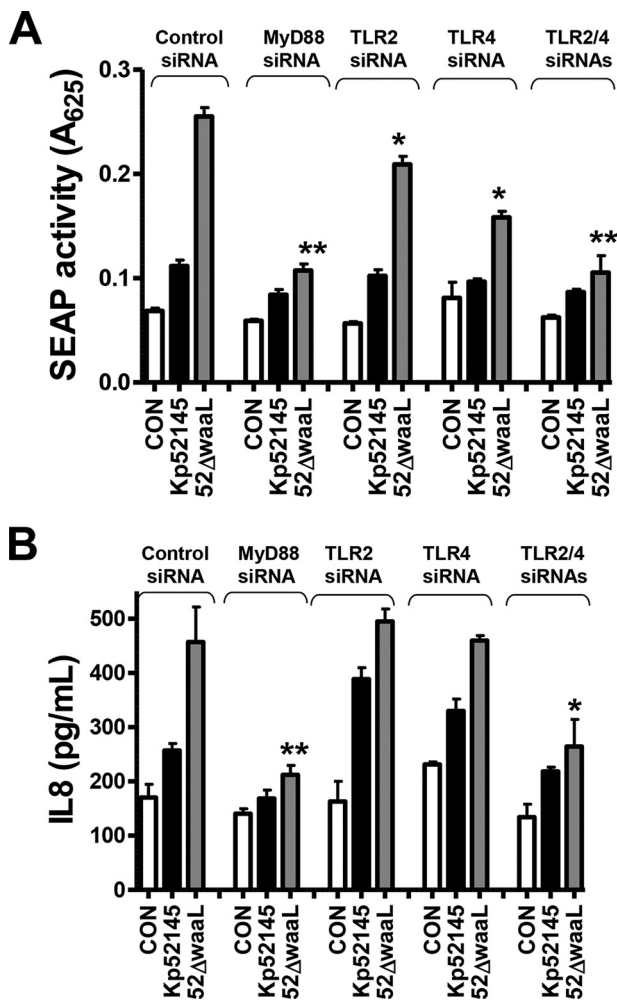


FIGURE 5. Role of MyD88, TLR2, and TLR4 in *K. pneumoniae* waaL mutant-induced cell activation. A, SEAP levels released by A549 cells transfected with the indicated siRNAs for different pattern recognition receptors, which were left untreated (control (CON), white bars) or infected with Kp52145 or waaL mutant ($n = 3$). B, ELISA of IL-8 released by A549 cells transfected with either control or the indicated siRNA for different pattern recognition receptors, which were left untreated (control, white bars) or infected ($n = 3$). Scale bars represent mean \pm S.E. **, $p < 0.01$; *, $p < 0.05$ (results are significantly different from the results obtained by infecting control siRNA-transfected cells with waaL mutant; one-way ANOVA).

exact function has not yet been described. To help understand the contribution of *Klebsiella* T2SS to NF- κ B attenuation, we constructed a *pula* mutant, because Pula is the only known protein secreted by *K. pneumoniae* T2SS (54). Immunoblot analysis confirmed the absence of the enzyme pullulanase in the outer membranes of the *pulC* and *yacC* mutants and, as expected, also in the outer membrane of the *pula* mutant (Fig. 6A). The amount of cell-bound CPS expressed by the mutants was quantified, and no differences were found between the CPS expressed by the wild type (11.49 ± 1.91 mg/ 10^7 cells) and the CPS expressed by any of the mutants (52Δ pulA, 15.21 ± 3.65 mg/ 10^7 cells; 52 pulC::tn5, 9.44 ± 2.91 mg/ 10^7 cells; and 52 yacC::tn5, 13.26 ± 4.97 mg/ 10^7 cells; for each comparison between wild-type CPS levels and mutant levels, $p > 0.05$, one-tailed Student's *t* test). Control experiments revealed that the adhesion levels of the *pulC* and *yacC* mutants were higher than those of the *pula* and Kp52145 strains, which in turn, were not

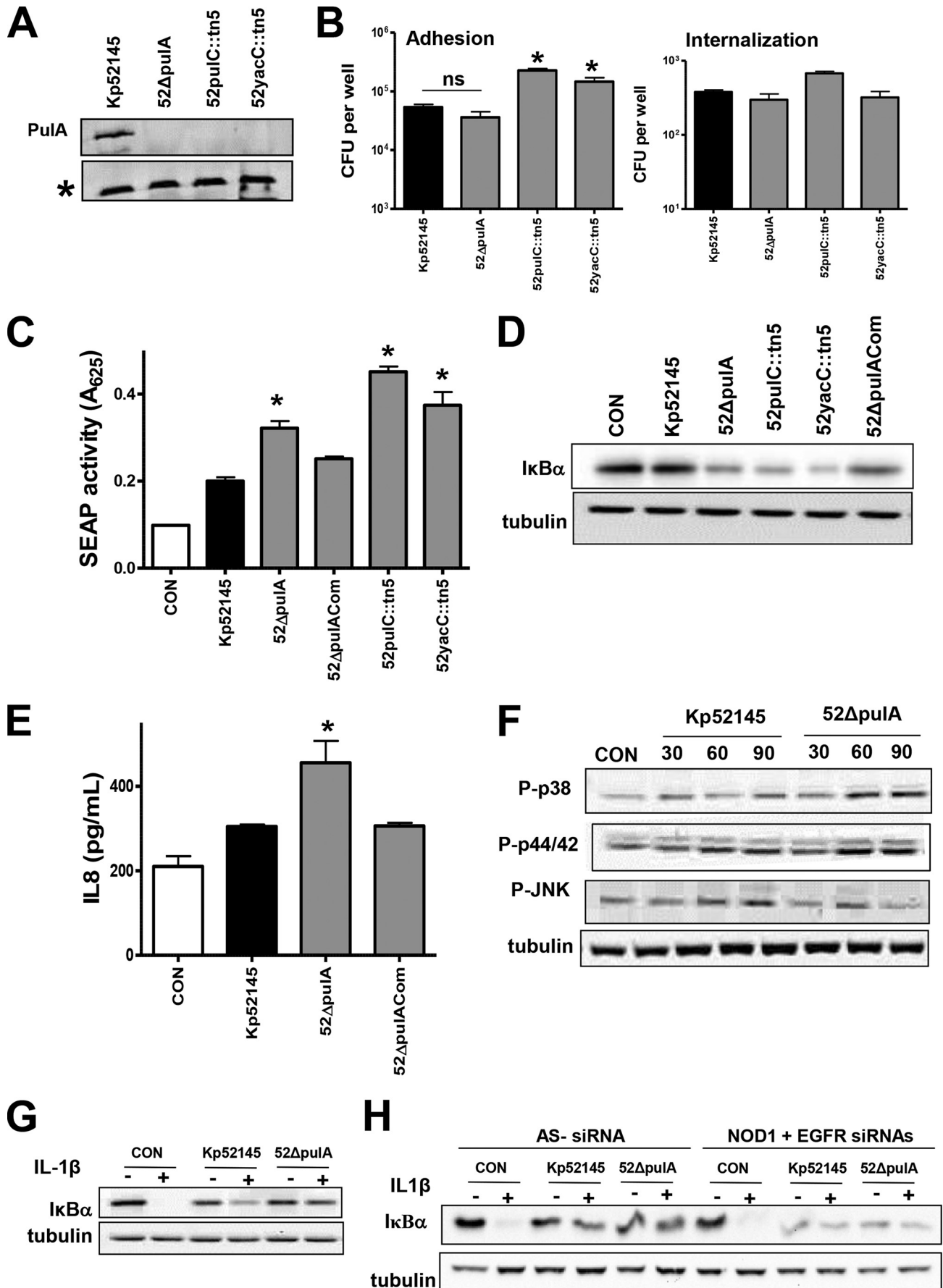
significantly different (Fig. 6B). In contrast, no significant differences were found in the internalization to cells between any of the strains (Fig. 6B).

SEAP levels induced by the T2SS mutants were higher than those induced by the wild type (Fig. 6C), and I κ B α levels were lower in those cells infected with the T2SS mutants (Fig. 6D). Complementation of the *pula* mutant restored the SEAP levels to those triggered by the wild type, and we found an increase in the levels of I κ B α in the lysates of infected cells (Fig. 6, C and D). Cells infected with the *pula* mutants also secreted higher levels of IL-8 than cells infected with the wild type (Fig. 6E). Complementation of the mutant restored IL-8 secretion to wild-type levels. We also evaluated the activation of MAPKs in *pula* mutant-infected cells. Western blot analysis shown in Fig. 6E revealed that infection with the *pula* mutant triggered the phosphorylation of the three MAPKs. Phosphorylation levels of p38 and p44/42 were higher at 60 and 90 min post-infection in cells infected with the *pula* mutant than in those infected with Kp52145 (Fig. 6E). Kp52145 and *pula* mutant triggered similar levels of phosphorylated JNK (Fig. 6E). In aggregate, these findings indicate that *K. pneumoniae* Pula contributes to limiting the activation of the NF- κ B canonical pathway and MAPKs p38 and p44/42.

We next sought to clarify whether T2SS-secreted Pula is required for *K. pneumoniae* anti-inflammatory phenotype (22, 24). Similar to Kp52145, *pula* mutant attenuated IL-1 β -induced I κ B α degradation (Fig. 6G). Furthermore, this effect was dependent on NOD1 and EGFR, because the *pula* mutant did not block cytokine-triggered I κ B α degradation in NOD1-EGFR knockdown cells (Fig. 6H).

siRNA-based experiments were carried out to investigate whether a TLR-MyD88-dependent pathway is implicated in the recognition of the *pula* mutant. SEAP levels induced by the *pula* mutant were reduced to those induced by the wild type only in MyD88 knocked-down cells and in TLR2-TLR4 knocked-down cells (Fig. 7A). Likewise, *pula* mutant-triggered IL-8 secretion was also dependent on TLR4-TLR2-MyD88 (Fig. 7B). Altogether, our results demonstrated that *K. pneumoniae* Pula is required to attenuate the activation of NF- κ B by limiting the activation of a TLR4-TLR2-MyD88 pathway.

Relative Contribution of CPS, O-polysaccharide, and *pula* to *K. pneumoniae* Attenuation of Inflammation—The fact that CPS, LPS OPS, and Pula are all involved in attenuating inflammatory responses led us to study the relative contribution of each of these factors. Therefore, we asked whether the absence of Pula further increases the SEAP levels and the secretion of IL-8 induced by the *cps* and *waaL* mutants. Data displayed in Fig. 7A show that SEAP levels induced by the double mutant *waaL-pula* were higher than those induced by either the *waaL* or *pula* single mutant. In turn, *waaL*-infected cells secreted higher SEAP levels than cells infected with the *pula* mutant (Fig. 8A). In the *cps* mutant background, the strain inducing the highest SEAP levels was the double mutant *waaL-pula*. No significant differences were observed between the *waaL* and *pula* mutants. Similar picture was obtained when the IL-8 secretion was used as read out for cellular activation (Fig. 8B). Collectively, these data show that the CPS, the LPS OPS and



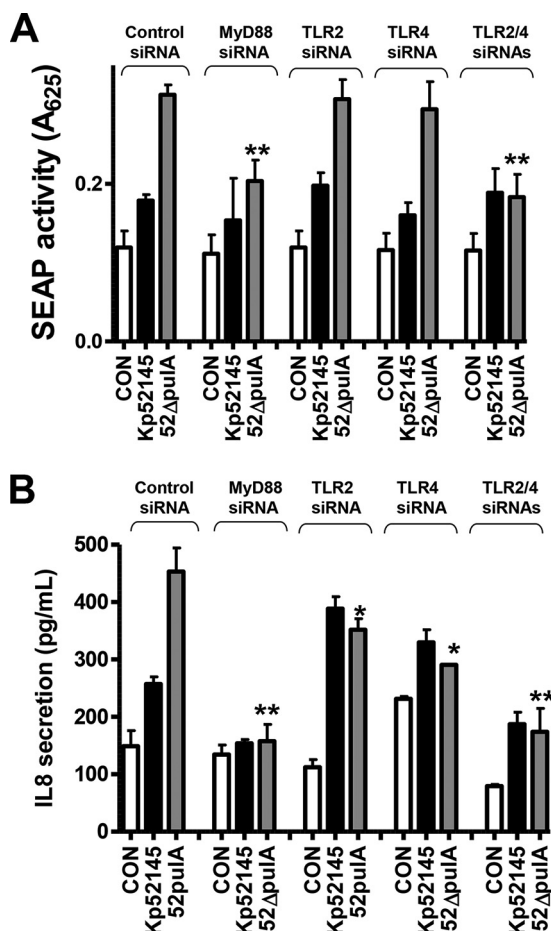


FIGURE 7. Role of MyD88, TLR2, and TLR4 in *K. pneumoniae pulA* mutant-induced cell activation. A, SEAP levels released by A549 cells transfected with the indicated siRNAs for different pattern recognition receptors, which were left untreated (control (CON), white bars) or infected with Kp52145 or *pulA* mutant ($n = 3$). B, ELISA of IL-8 released by A549 cells transfected with either control or the indicated siRNA for different pattern recognition receptors, which were left untreated (control, white bars) or infected ($n = 3$). Scale bars represent mean \pm S.E. **, $p < 0.01$; *, $p < 0.05$ (results are significantly different from the results by obtained infecting control siRNA-transfected cells with *pulA* mutant; one-way ANOVA).

PulA are *Klebsiella* factors require to limit NF- κ B activation and the secretion of IL-8 by infected epithelial cells.

Virulence of *K. pneumoniae* Mutants—To determine the ability of *pulA* and *waaL* mutants to cause pneumonia, CD-1 mice were infected intranasally, and 24 h post-infection the bacterial loads in trachea, lung, spleen, and liver homogenates were determined. No differences were found in the bacterial loads in the trachea (Fig. 9A). In contrast, the bacterial loads of the *pulA* and *waaL* mutants were significantly lower in lung, spleen, and liver than those of the wild type (Fig. 9A).

FIGURE 6. *K. pneumoniae PulA* T2SS is required for attenuation of NF- κ B activation. A, immunoblot analysis of *PulA* levels in the outer membranes of *Klebsiella* strains. An asterisk marks a protein also recognized by the anti-*PulA* antibody, which served as a loading control. Data are representative of three independent experiments. B, adhesion (left panel) and internalization (right panel) of *Klebsiella* strains to A549 cells ($n = 3$). C, SEAP levels released by A549 cells left untreated (control (CON), white bar) or infected with the indicated strains. Scale bars represent mean \pm S.E. ($n = 3$). D, immunoblot analysis of I κ B α and tubulin levels in A549 cells left uninfected (control) or infected for 3 h. Data are representative of three independent experiments. E, ELISA of IL-8 released by A549 cells left untreated (control, white bar) or infected for 12 h with the indicated strains ($n = 3$). F, immunoblots showing phosphorylated MAPKs and tubulin levels in cell extracts of A549 cells left uninfected (control, time 0) or infected with *K. pneumoniae* strains for different times. The results are representative of three independent experiments. G and H, immunoblot analysis of I κ B α and tubulin levels in lysates of A549 cells infected with the indicated strains. The cells were left untreated, stimulated with IL-1 β (1 ng/ml, 10 min), infected for 3 h, or infected for 3 h and then stimulated with IL-1 β . In H, siRNA targets are indicated in the top row of each panel (AS-, AllStars control siRNA). Data are representative of three independent experiments. *, $p < 0.05$ (results are significantly different from the results for Kp52145; one-tailed t test). ns (not significant), $p > 0.05$ (for the indicated comparisons; one-tailed t test).

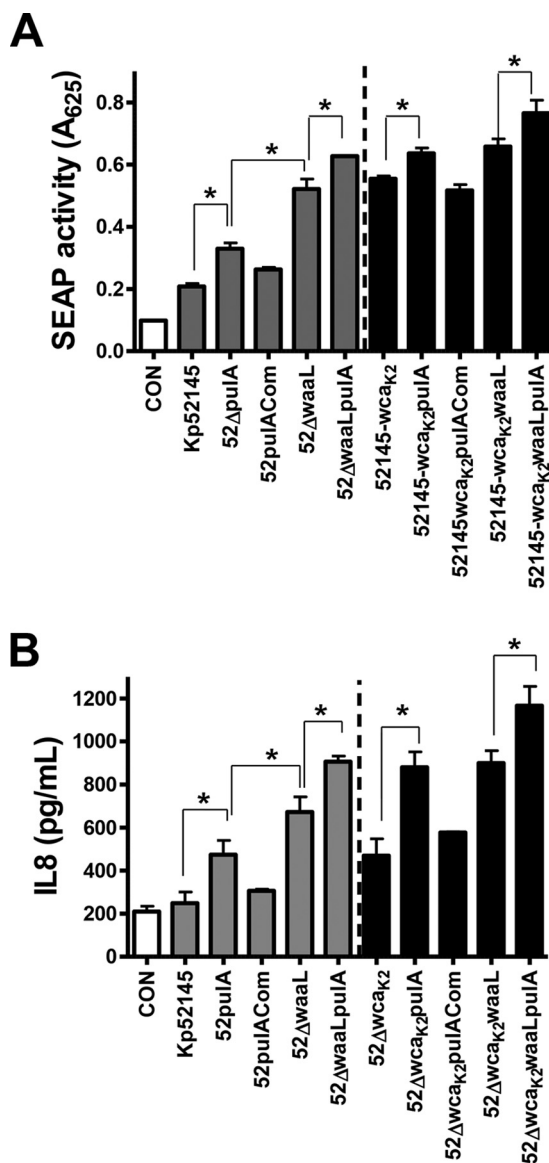


FIGURE 8. Relative contribution of CPS, LPS O-polysaccharide, and *PulA* T2SS to *K. pneumoniae*-triggered attenuation of NF- κ B activation. A, SEAP levels released by A549 cells left untreated (control (CON), white bar) or infected with the indicated strains ($n = 3$). B, ELISA of IL-8 released by A549 cells left untreated (control, white bar) or infected for 12 h with the indicated strains ($n = 3$). Scale bars represent mean \pm S.E. CPS-expressing strains, gray bars; CPS negative strains, black bars. *, $p < 0.05$ (for the indicated comparisons, one-tailed t test).

We also assessed by RT-qPCR the expression levels of *kc* and *tnfa* cytokines in the lungs of infected mice. The levels of *kc* were higher in lungs of infected mice than in lungs of non-infected animals ($p < 0.05$ for all comparisons versus non-infected mice; one-

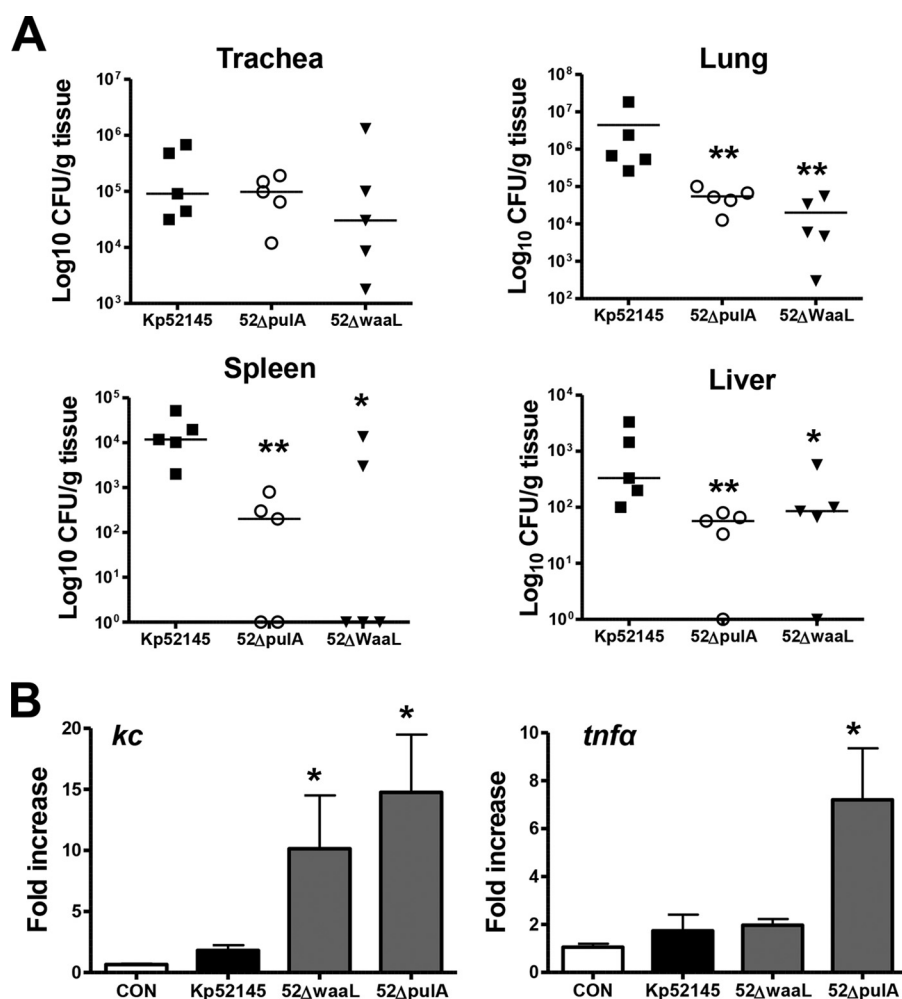


FIGURE 9. **Virulence of *K. pneumoniae waaL* and *pulA* mutants.** A, bacterial counts in mouse organs at 24 h post-infection. Mice were infected intranasally with the indicated strains (Kp52145, ■), *pulA* mutant (52Δ*pulA*, ○) or *waaL* mutant (52Δ*waaL*, ▼). Results were reported as log cfu/g of tissue. **, $p < 0.01$; *, $p < 0.05$ (results are significantly different from the results obtained infecting with Kp52145; one-way ANOVA). B, *kc* and *tnfx* mRNA expressions in whole lungs were assessed by RT-qPCR. Mice were non-infected (control (CON), white bars, $n = 5$) or infected with Kp52145 (black bars, $n = 5$) or *waaL* and *pulA* mutants (gray bars; $n = 5$ for each mutant). Scale bars represent mean \pm S.E. *, $p < 0.05$ (results are significantly different from the results obtained by infecting with Kp52145; one-way ANOVA).

tailed *t* test) (Fig. 9B). However, *kc* levels were significantly higher in the lungs of mice infected with *pulA* and *waaL* mutants than in those infected with the wild type (Fig. 9B). *tnfx* levels were higher in the lungs of mice infected with *pulA* mutant than in those infected with the wild type or the *waaL* mutant.

Discussion

We recently showed that *K. pneumoniae* dampens the activation of inflammatory responses in host cells by targeting the activation of the NF- κ B canonical pathway (22, 24). Our results revealed that *K. pneumoniae* CPS is necessary but not sufficient to attenuate inflammation (22, 24). To identify additional *Klebsiella* factors required to dampen inflammation, we standardized and applied a high-throughput gain-of-function screen, mining a *Klebsiella* transposon mutant library. Using this approach, we identified 114 mutants that triggered the activation of NF- κ B. Follow-up validation uncovered that, in addition to the CPS, *K. pneumoniae* LPS OPS and the pullulanase T2SS are required for evasion of innate immune responses. Table 3 summarizes the findings obtained in this study. This

study represents the first functional genomics-driven identification of previously unknown bacterial factors required to down-regulate the NF- κ B signaling pathway.

The high number of *Klebsiella* loci involved in the attenuation of NF- κ B activation was somewhat unanticipated. To the best of our knowledge the majority of the loci identified in our screening have never been implicated in NF- κ B control, and even the function of most of them is largely speculative, as it is based on *in silico* predictions. Nevertheless, it should be noted that the transposon mutant library examined is not saturated, hence making it possible that additional loci are needed for fully effective immune evasion. For example, in our screening we did not retrieve any *cps* mutant, despite the fact that CPS plays a crucial role in *Klebsiella* anti-immune strategies (8, 20, 24). However, this is not unprecedented in this type of studies; for example, *cps* mutants were not isolated in other *Klebsiella* screenings searching for virulence factors (4, 55, 56).

The two gene ontology categories including half of the loci identified in the screening are: metabolism and transport, 32%

Klebsiella pneumoniae Anti-inflammation

TABLE 3

Summary of the phenotypes displayed by the *K. pneumoniae* mutants characterized in this study

NT, not tested; —, no capsule; ~, similar to the wild-type strain; ↑, higher/stronger than the wild type, where the number of arrows gives an indication of relative levels compared with the wild type; ↓, less than the wild type.

<i>Klebsiella</i> factor	Phenotype of the mutants						
	Adhesion/internalization	CPS levels	NF- κ B activation ^a	MAPK activation ^b			TLR signaling ^c
				p38	p44/42	JNK	
Siderophores							
<i>entF</i>	↑	↓	↑↑		NT		NT
<i>cps-entF</i>	NT	—	↑↑		NT		NT
<i>iutA</i>	NT	NT	~		NT		NT
<i>Irp1</i>	NT	NT	~		NT		NT
LPS							
<i>waaL</i>	~	~	↑↑	↑	↑	~	Yes
<i>glf</i>	~	~	↑	↑	↑	~	NT
<i>wabM</i>	~	~	↑↑		NT		NT
<i>cps-waaL</i>	~	—	↑↑		NT		NT
<i>cps-wabM</i>	↑	—	↑↑↑↑		NT		NT
T2SS							
<i>pulA</i>	~	~	↑↑	↑	↑	~	Yes
<i>cps-pulA</i>	NT	—	↑↑		NT		NT
<i>cps-waaL-pulA</i>	NT	—	↑↑↑↑		NT		NT

^a SEAP levels as read-out.

^b Phosphorylation of the MAPKs as read-out.

^c IL-8 secretion and SEAP levels are dependent on the TLR4-TLR2-MyD88 signaling pathway.

of the mutants, and envelope-related genes, 17% of the mutants. None of the metabolic and transport mutants displayed any growth defects under the screening conditions or in LB, hence making it unlikely that any gross growth defect underlies the activation of NF- κ B in infected cells. As this will be the subject of future studies, at present we speculated that their contribution to *Klebsiella* immune evasion is indirect and related to their impact on other *Klebsiella* factors. Supporting this hypothesis, the follow-up analysis of the enterobactin mutant revealed that the lack of the siderophore is linked to a reduced CPS expression, which in turn explains the NF- κ B activation induced by the mutant. The regulatory connection between iron levels and CPS expression has been already established (48). Because our wild-type strain encodes for two additional iron-scavenging systems, yersiniabactin and aerobactin, we sought to determine whether any *Klebsiella* siderophore mutant would induce NF- κ B activation. However, and in good agreement with Lawlor *et al.* (9), enterobactin was the only siderophore expressed under our infection conditions. Therefore, it was not unexpected to find that the mutants in the other two scavenging systems did not activate NF- κ B. Nonetheless, the evidence indicates that yersiniabactin is the *Klebsiella* siderophore that plays a dominant role *in vivo* (9), hence making possible that yersiniabactin would be the siderophore implicated in *Klebsiella* immune evasion during pneumonia.

The other major set of mutants were related to envelope structures, thereby adding further evidence to the critical role played by bacterial surface structures on host-pathogen interactions. Although in this work we have characterized only the role of the OPS and T2SS systems, it is worth discussing the possible contribution of the peptidoglycan and adhesion mutants to *Klebsiella* immune evasion. The seminal discoveries showing that NOD receptors recognize peptidoglycan motifs from Gram-negative bacteria provide a mechanistic explanation for the observation that peptidoglycan mutants induce NF- κ B activation (57, 58). This is because these mutants secrete peptidoglycan fragments into the medium, which then activate

NOD1 (59). Future efforts in our laboratory will confirm whether this is the case with our set of mutants. In addition, we will be eager to explore whether *K. pneumoniae* remodels its peptidoglycan to attenuate detection by NOD receptors.

In our previous studies we did demonstrate that *Klebsiella*-cell contact is essential to attenuate NF- κ B activation (22). In this scenario, it can be predicted that any mutant deficient in adhesion will be affected on its ability to block NF- κ B activation. Of note, in our recent siRNA-based screening we uncovered the fact that *Klebsiella* may manipulate the β 1-integrin-ILK signaling cascade to dampen inflammatory responses (24). β 1-integrins are used by many pathogens as cellular receptors for attachment (60). It is then tempting to speculate that the adhesion-related mutants found in the present study might not be able to target the β 1-integrin-ILK signaling cascade.

The LPS OPS is perhaps the most widely found factor in any screen designed to identify virulence factors of Gram-negative bacteria. However, to the best of our knowledge, ours is the first screening to demonstrate its involvement in attenuating NF- κ B activation. The fact that the double mutant lacking CPS and OPS induced higher responses than each of the single mutants indicates that the *Klebsiella* polysaccharides do not play redundant roles in host-*Klebsiella* interactions. Having established the role of the OPS, we next investigated whether LPS core residues may also participate in immune evasion. To investigate the contribution of core residues in an OPS-bearing strain, we used defined mutants that lack the OPS in addition to core residues, which in turn might suggest that the core residues will never be exposed in a wild-type strain. However, it should be noted that epidemiological data indicate that nearly 10% of *Klebsiella* clinical isolates do not express the LPS OPS (61), and therefore, core residues will not be masked by the OPS. Our results revealed that the first glucose residue of the LPS core is necessary to attenuate NF- κ B activation, because the SEAP levels induced by the *wabM* mutant, lacking also OPS, were higher than those triggered by the OPS mutant. Elimination

nation of additional core residues did not further increase the SEAP levels.

The invasion experiments revealed unexpected features of the contribution of CPS and LPS to *Klebsiella* interaction with epithelial cells. Available evidence supports the notion that *Klebsiella* CPS is the critical factor preventing *Klebsiella* internalization by epithelial cells (49). Our data further corroborated this notion but also highlighted the contribution of OPS and core residues. However, in the absence of CPS, the D-galactan OPS mediates *Klebsiella* internalization by epithelial cells because the internalization of those mutants lacking the OPS, mutants *waaL*, *wabM*, and *wabK*, was reduced to the levels of the wild-type strain. Surprisingly, the internalization levels of the *wabH* mutant were similar to those of the CPS mutant. Structural studies showed that a core galactose residue gets exposed in this mutant (50), which in turn could account for the mutant internalization.

The contribution of the LPS core to virulence is poorly characterized in most Gram-negative pathogens, and it has been rigorously established only for *Yersinia enterocolitica* and Kp52145 (50, 62). In a previous study we uncovered the contribution of the *Klebsiella* core in preventing macrophage phagocytosis (6), which, together with the evidence presented in this work, led us to put forward the notion that core residues are important for *Klebsiella* immune evasion. Interestingly, this might be a general feature of LPS core sections, as it has been reported recently that *Brucella abortus* core acts as a shield against immune recognition (63). Future studies testing additional pathogens should help to further validate this hypothesis.

In this work, we discovered that *Klebsiella* pullulanase T2SS is important for immune evasion *in vitro* and *in vivo*. The *Klebsiella* pullulanase secretion system is the archetype of T2SS, and most of the previous research efforts have been devoted to characterizing the molecular structure and function of the secretion system (54). However, its contribution to *Klebsiella* virulence, if any, was unknown. Perusal of the literature indicates that PulA is the only protein secreted by *K. pneumoniae* T2SS, although presently we cannot rigorously rule out that other proteins yet to be found are also secreted by the system. Nonetheless, the fact that SEAP levels induced by the *pulA*, *pulC*, and *yacC* mutants were not significantly different may support the idea that indeed the only protein secreted by the T2SS is PulA. Taking into account the evidence available for similar enzymes from other pathogens (64, 65), we speculate that PulA interacts with glycan(s) located in the epithelial surface, hence leading to limited activation of the TLR4-TLR2-MyD88 pathway upon *Klebsiella* infection. Future efforts of the laboratory will be devoted to identify these host glycan(s).

In this work, we have demonstrated for the first time, using a pneumonia mouse model, that PulA is important for bacterial survival in the lung. Research over the last 20 years has demonstrated a correlation between the activation of inflammatory responses and *Klebsiella* clearance from the airways (11–14). Hence the higher inflammatory response induced by the *pulA* mutant may contribute to mutant clearance. It should be noted that cytokines and chemokines released by epithelial cells do increase the bactericidal activity of professional phagocytes. Studies are ongoing to determine whether PulA plays any role

in the interaction of *K. pneumoniae* with alveolar macrophages and neutrophils.

Recently, we demonstrated that *K. pneumoniae* exerts an anti-inflammatory effect by engaging NOD1 and EGF receptors (22, 24). Bacterial removal by gentamicin treatment renders cells again responsive to pro-inflammatory mediators (22). Considering that CPS is necessary but not sufficient to attenuate inflammation (22, 24), in this work we asked whether OPS and PulA could mediate this anti-inflammatory effect. However, our findings shown in Figs. 4 and 6 do not support this. These results do not contradict the other findings reported in this work showing that OPS and T2SS mutants activate inflammatory responses. It should be noted that in most of the experiments in this study gentamicin was used to remove bacteria after a 2-h infection; for example, IL-8 in the supernatants was measured at 12 h post-infection. In turn, the fact that *waaL* and *pulA* mutant-induced responses were dependent on TLR2-TLR4-MyD88 activation suggests that OPS and PulA perturb TLR-dependent recognition of *K. pneumoniae*. These results further corroborate *in vitro* and *in vivo* data showing that TLR2 and TLR4 play a dominant role in detecting *K. pneumoniae* infections (20, 66, 67).

On the whole, the evidence is consistent with the notion that an essential aspect of *K. pneumoniae* infection biology is to thwart the TLR-dependent activation of host defense responses. Our studies have revealed the concerted action of CPS, OmpA, LPS polysaccharide, and T2SS to prevent TLR-dependent responses (this work and others (8, 20, 21)). Further highlighting the importance of immune evasion for *Klebsiella* virulence, all of these mutants are attenuated in the pneumonia model (this work and others (3, 8)). Therefore, we put forward the notion that a new therapeutic approach to the treatment of *Klebsiella* infections will be to prevent this virulence strategy, either by using molecules directed to block some of these factors or by increasing TLR-governed defense responses. Supporting the feasibility of the latter approach, the administration of the TLR ligand CpG augments anti-*Klebsiella* immunity in pneumonia (17).

Acknowledgments—We thank Anthony Pugsley for the anti-PulA antibody as well as for insights into the pullulanase system. We are grateful to members of the Bengoechea laboratory for helpful discussions. The Centro de Investigación Biomédica en Red Enfermedades Respiratorias (CIBERES) is an initiative of the Instituto de Salud Carlos III.

References

1. Sahly, H., and Podschun, R. (1997) Clinical, bacteriological, and serological aspects of *Klebsiella* infections and their spondylarthropathic sequelae. *Clin. Diagn. Lab. Immunol.* **4**, 393–399
2. Boucher, H. W., Talbot, G. H., Bradley, J. S., Edwards, J. E., Gilbert, D., Rice, L. B., Scheld, M., Spellberg, B., and Bartlett, J. (2009) Bad bugs, no drugs: no ESCAPE! An update from the Infectious Diseases Society of America. *Clin. Infect. Dis.* **48**, 1–12
3. Cortés, G., Borrell, N., de Astorza, B., Gómez, C., Saulea, J., and Albertí, S. (2002) Molecular analysis of the contribution of the capsular polysaccharide and the lipopolysaccharide O side chain to the virulence of *Klebsiella pneumoniae* in a murine model of pneumonia. *Infect. Immun.* **70**, 2583–2590

4. Lawlor, M. S., Hsu, J., Rick, P. D., and Miller, V. L. (2005) Identification of *Klebsiella pneumoniae* virulence determinants using an intranasal infection model. *Mol. Microbiol.* **58**, 1054–1073
5. Camprubí, S., Merino, S., Benedí, V. J., and Tomás, J. M. (1993) The role of the O-antigen lipopolysaccharide and capsule on an experimental *Klebsiella pneumoniae* infection of the rat urinary tract. *FEMS Microbiol. Lett.* **111**, 9–13
6. March, C., Cano, V., Moranta, D., Llobet, E., Pérez-Gutiérrez, C., Tomás, J. M., Suárez, T., Garmendia, J., and Bengoechea, J. A. (2013) Role of bacterial surface structures on the interaction of *Klebsiella pneumoniae* with phagocytes. *PLoS One* **8**, e56847
7. Llobet, E., Campos, M. A., Giménez, P., Moranta, D., and Bengoechea, J. A. (2011) Analysis of the networks controlling the antimicrobial-peptide-dependent induction of *Klebsiella pneumoniae* virulence factors. *Infect. Immun.* **79**, 3718–3732
8. March, C., Moranta, D., Regueiro, V., Llobet, E., Tomás, A., Garmendia, J., and Bengoechea, J. A. (2011) *Klebsiella pneumoniae* outer membrane protein A is required to prevent the activation of airway epithelial cells. *J. Biol. Chem.* **286**, 9956–9967
9. Lawlor, M. S., O'connor, C., and Miller, V. L. (2007) Yersiniabactin is a virulence factor for *Klebsiella pneumoniae* during pulmonary infection. *Infect. Immun.* **75**, 1463–1472
10. Murphy, C. N., Mortensen, M. S., Krogfelt, K. A., and Clegg, S. (2013) Role of *Klebsiella pneumoniae* type 1 and type 3 fimbriae in colonizing silicone tubes implanted into the bladders of mice as a model of catheter-associated urinary tract infections. *Infect. Immun.* **81**, 3009–3017
11. Greenberger, M. J., Kunkel, S. L., Strieter, R. M., Lukacs, N. W., Bramson, J., Gaudie, J., Graham, F. L., Hitt, M., Danforth, J. M., and Standiford, T. J. (1996) IL-12 gene therapy protects mice in lethal *Klebsiella pneumoniae*. *J. Immunol.* **157**, 3006–3012
12. Greenberger, M. J., Strieter, R. M., Kunkel, S. L., Danforth, J. M., Laichalk, L. L., McGillicuddy, D. C., and Standiford, T. J. (1996) Neutralization of macrophage inflammatory protein-2 attenuates neutrophil recruitment and bacterial clearance in murine *Klebsiella pneumoniae*. *J. Infect. Dis.* **173**, 159–165
13. Happel, K. I., Dubin, P. J., Zheng, M., Ghilardi, N., Lockhart, C., Quinton, L. J., Odden, A. R., Shellito, J. E., Bagby, G. J., Nelson, S., and Kolls, J. K. (2005) Divergent roles of IL-23 and IL-12 in host defense against *Klebsiella pneumoniae*. *J. Exp. Med.* **202**, 761–769
14. Happel, K. I., Zheng, M., Young, E., Quinton, L. J., Lockhart, E., Ramsay, A. J., Shellito, J. E., Schurr, J. R., Bagby, G. J., Nelson, S., and Kolls, J. K. (2003) Cutting edge: roles of Toll-like receptor 4 and IL-23 in IL-17 expression in response to *Klebsiella pneumoniae* infection. *J. Immunol.* **170**, 4432–4436
15. Laichalk, L. L., Bucknell, K. A., Huffnagle, G. B., Wilkowski, J. M., Moore, T. A., Romanelli, R. J., and Standiford, T. J. (1998) Intrapulmonary delivery of tumor necrosis factor agonist peptide augments host defense in murine Gram-negative bacterial pneumonia. *Infect. Immun.* **66**, 2822–2826
16. Karaolis, D. K., Newstead, M. W., Zeng, X., Hyodo, M., Hayakawa, Y., Bhan, U., Liang, H., and Standiford, T. J. (2007) Cyclic di-GMP stimulates protective innate immunity in bacterial pneumonia. *Infect. Immun.* **75**, 4942–4950
17. Deng, J. C., Moore, T. A., Newstead, M. W., Zeng, X., Krieg, A. M., and Standiford, T. J. (2004) CpG oligodeoxynucleotides stimulate protective innate immunity against pulmonary *Klebsiella* infection. *J. Immunol.* **173**, 5148–5155
18. Standiford, T. J., Wilkowski, J. M., Sisson, T. H., Hattori, N., Mehrad, B., Bucknell, K. A., and Moore, T. A. (1999) Intrapulmonary tumor necrosis factor gene therapy increases bacterial clearance and survival in murine Gram-negative pneumonia. *Hum. Gene Ther.* **10**, 899–909
19. Tsai, W. C., Strieter, R. M., Wilkowski, J. M., Bucknell, K. A., Burdick, M. D., Lira, S. A., and Standiford, T. J. (1998) Lung-specific transgenic expression of KC enhances resistance to *Klebsiella pneumoniae* in mice. *J. Immunol.* **161**, 2435–2440
20. Moranta, D., Regueiro, V., March, C., Llobet, E., Margareto, J., Larrate, E., Garmendia, J., and Bengoechea, J. A. (2010) *Klebsiella pneumoniae* capsule polysaccharide impedes the expression of β -defensins by airway epithelial cells. *Infect. Immun.* **78**, 1135–1146
21. Regueiro, V., Campos, M. A., Pons, J., Albertí, S., and Bengoechea, J. A. (2006) The uptake of a *Klebsiella pneumoniae* capsule polysaccharide mutant triggers an inflammatory response by human airway epithelial cells. *Microbiology* **152**, 555–566
22. Regueiro, V., Moranta, D., Frank, C. G., Larrarte, E., Margareto, J., March, C., Garmendia, J., and Bengoechea, J. A. (2011) *Klebsiella pneumoniae* subverts the activation of inflammatory responses in a NOD1-dependent manner. *Cell. Microbiol.* **13**, 135–153
23. Lawlor, M. S., Handley, S. A., and Miller, V. L. (2006) Comparison of the host responses to wild-type and *cpsB* mutant *Klebsiella pneumoniae* infections. *Infect. Immun.* **74**, 5402–5407
24. Frank, C. G., Regueiro, V., Rother, M., Moranta, D., Maeurer, A. P., Garmendia, J., Meyer, T. F., and Bengoechea, J. A. (2013) *Klebsiella pneumoniae* targets an EGF receptor-dependent pathway to subvert inflammation. *Cell. Microbiol.* **15**, 1212–1233
25. Liu, Y., Shepherd, E. G., and Nelin, L. D. (2007) MAPK phosphatases: regulating the immune response. *Nat. Rev. Immunol.* **7**, 202–212
26. Sun, S. C. (2008) Deubiquitylation and regulation of the immune response. *Nat. Rev. Immunol.* **8**, 501–511
27. Lery, L. M., Frangeul, L., Tomas, A., Passet, V., Almeida, A. S., Bialek-Davenet, S., Barbe, V., Bengoechea, J. A., Sansonetti, P., Brisse, S., and Tournebise, R. (2014) Comparative analysis of *Klebsiella pneumoniae* genomes identifies a phospholipase D family protein as a novel virulence factor. *BMC Biol.* **12**, 41–7007-12–41
28. Nassif, X., Fournier, J. M., Arondel, J., and Sansonetti, P. J. (1989) Mucoid phenotype of *Klebsiella pneumoniae* is a plasmid-encoded virulence factor. *Infect. Immun.* **57**, 546–552
29. Sharma, R. C., and Schimke, R. T. (1996) Preparation of electrocompetent *E. coli* using salt-free growth medium. *BioTechniques* **20**, 42–44
30. Larsen, R. A., Wilson, M. M., Guss, A. M., and Metcalf, W. W. (2002) Genetic analysis of pigment biosynthesis in *Xanthobacter autotrophicus* Py2 using a new, highly efficient transposon mutagenesis system that is functional in a wide variety of bacteria. *Arch. Microbiol.* **178**, 193–201
31. Malo, N., Hanley, J. A., Cerquozzi, S., Pelletier, J., and Nadon, R. (2006) Statistical practice in high-throughput screening data analysis. *Nat. Biotechnol.* **24**, 167–175
32. Llobet, E., Tomás, J. M., and Bengoechea, J. A. (2008) Capsule polysaccharide is a bacterial decoy for antimicrobial peptides. *Microbiology* **154**, 3877–3886
33. Rahn, A., and Whitfield, C. (2003) Transcriptional organization and regulation of the *Escherichia coli* K30 group 1 capsule biosynthesis (*cps*) gene cluster. *Mol. Microbiol.* **47**, 1045–1060
34. Marolda, C. L., Lahiry, P., Vinés, E., Saldías, S., and Valvano, M. A. (2006) Micromethods for the characterization of lipid A-core and O-antigen lipopolysaccharide. *Methods Mol. Biol.* **347**, 237–252
35. Alexeyev, M. F. (1999) The pKNOCK series of broad-host-range mobilizable suicide vectors for gene knockout and targeted DNA insertion into the chromosome of Gram-negative bacteria. *BioTechniques* **26**, 824–826
36. Rubirés, X., Saigi, F., Piqué, N., Climent, N., Merino, S., Albertí, S., Tomás, J. M., and Regué, M. (1997) A gene (*wbbL*) from *Serratia marcescens* N28b (O4) complements the *rfb-50* mutation of *Escherichia coli* K-12 derivatives. *J. Bacteriol.* **179**, 7581–7586
37. Llobet, E., March, C., Giménez, P., and Bengoechea, J. A. (2009) *Klebsiella pneumoniae* *OmpA* confers resistance to antimicrobial peptides. *Antimicrob. Agents Chemother.* **53**, 298–302
38. Crépin, S., Harel, J., and Dozois, C. M. (2012) Chromosomal complementation using Tn7 transposon vectors in Enterobacteriaceae. *Appl. Environ. Microbiol.* **78**, 6001–6008
39. Pérez-Gutiérrez, C., Llobet, E., Llompert, C. M., Reinés, M., and Bengoechea, J. A. (2010) Role of lipid A acylation in *Yersinia enterocolitica* virulence. *Infect. Immun.* **78**, 2768–2781
40. Dennis, J. J., and Zylstra, G. J. (1998) Plasmid self-cloning minitransposon derivatives for rapid genetic analysis of Gram-negative bacterial genomes. *Appl. Environ. Microbiol.* **64**, 2710–2715
41. Miller, W. G., Leveau, J. H., and Lindow, S. E. (2000) Improved *gfp* and *inaZ* broad-host-range promoter-probe vectors. *Mol. Plant Microbe Interact.* **13**, 1243–1250
42. Reinés, M., Llobet, E., Llompert, C. M., Moranta, D., Pérez-Gutiérrez, C.,

- and Bengoechea, J. A. (2012) Molecular basis of *Yersinia enterocolitica* temperature-dependent resistance to antimicrobial peptides. *J. Bacteriol.* **194**, 3173–3188
43. Reinés, M., Llobet, E., Dahlström, K. M., Pérez-Gutiérrez, C., Llopart, C. M., Torrecabota, N., Salminen, T. A., and Bengoechea, J. A. (2012) Deciphering the acylation pattern of *Yersinia enterocolitica* lipid A. *PLoS Pathog.* **8**, e1002978
 44. Raymond, K. N., Dertz, E. A., and Kim, S. S. (2003) Enterobactin: an archetype for microbial iron transport. *Proc. Natl. Acad. Sci. U.S.A.* **100**, 3584–3588
 45. Hayden, M. S., and Ghosh, S. (2008) Shared principles in NF- κ B signaling. *Cell* **132**, 344–362
 46. Liu, Z., Reba, S., Chen, W. D., Porwal, S. K., Boom, W. H., Petersen, R. B., Rojas, R., Viswanathan, R., and Devireddy, L. (2014) Regulation of mammalian siderophore 2,5-DHBA in the innate immune response to infection. *J. Exp. Med.* **211**, 1197–1213
 47. Autenrieth, L., Hantke, K., and Heesemann, J. (1991) Immunosuppression of the host and delivery of iron to the pathogen: a possible dual role of siderophores in the pathogenesis of microbial infections?. *Med. Microbiol. Immunol.* **180**, 135–141
 48. Lin, C. T., Wu, C. C., Chen, Y. S., Lai, Y. C., Chi, C., Lin, J. C., Chen, Y., and Peng, H. L. (2011) Fur regulation of the capsular polysaccharide biosynthesis and iron-acquisition systems in *Klebsiella pneumoniae* CG43. *Microbiology* **157**, 419–429
 49. Cortés, G., Alvarez, D., Saus, C., and Albertí, S. (2002) Role of lung epithelial cells in defense against *Klebsiella pneumoniae* pneumonia. *Infect. Immun.* **70**, 1075–1080
 50. Regué, M., Izquierdo, L., Fresno, S., Piqué, N., Corsaro, M. M., Naldi, T., De Castro, C., Waidelich, D., Merino, S., and Tomás, J. M. (2005) A second outer-core region in *Klebsiella pneumoniae* lipopolysaccharide. *J. Bacteriol.* **187**, 4198–4206
 51. Köplin, R., Brisson, J. R., and Whitfield, C. (1997) UDP-galactofuranose precursor required for formation of the lipopolysaccharide O antigen of *Klebsiella pneumoniae* serotype O1 is synthesized by the product of the *rfbDKPO1* gene. *J. Biol. Chem.* **272**, 4121–4128
 52. Kenny, E. F., and O'Neill, L. A. (2008) Signalling adaptors used by Toll-like receptors: an update. *Cytokine* **43**, 342–349
 53. Korotkov, K. V., Sandkvist, M., and Hol, W. G. (2012) The type II secretion system: biogenesis, molecular architecture and mechanism. *Nat. Rev. Microbiol.* **10**, 336–351
 54. Pugsley, A. P., Francetic, O., Hardie, K., Possot, O. M., Sauvonnnet, N., and Seydel, A. (1997) Pullulanase: model protein substrate for the general secretory pathway of Gram-negative bacteria. *Folia Microbiol. (Praha)* **42**, 184–192
 55. Maroncle, N., Balestrino, D., Rich, C., and Forestier, C. (2002) Identification of *Klebsiella pneumoniae* genes involved in intestinal colonization and adhesion using signature-tagged mutagenesis. *Infect. Immun.* **70**, 4729–4734
 56. Tu, Y. C., Lu, M. C., Chiang, M. K., Huang, S. P., Peng, H. L., Chang, H. Y., Jan, M. S., and Lai, Y. C. (2009) Genetic requirements for *Klebsiella pneumoniae*-induced liver abscess in an oral infection model. *Infect. Immun.* **77**, 2657–2671
 57. Chamailard, M., Hashimoto, M., Horie, Y., Masumoto, J., Qiu, S., Saab, L., Ogura, Y., Kawasaki, A., Fukase, K., Kusumoto, S., Valvano, M. A., Foster, S. J., Mak, T. W., Nuñez, G., and Inohara, N. (2003) An essential role for NOD1 in host recognition of bacterial peptidoglycan containing diaminopimelic acid. *Nat. Immunol.* **4**, 702–707
 58. Girardin, S. E., Boneca, I. G., Carneiro, L. A., Antignac, A., Jéhanno, M., Viala, J., Tedin, K., Taha, M. K., Labigne, A., Zähringer, U., Coyle, A. J., DiStefano, P. S., Bertin, J., Sansonetti, P. J., and Philpott, D. J. (2003) Nod1 detects a unique muropeptide from Gram-negative bacterial peptidoglycan. *Science* **300**, 1584–1587
 59. Nigro, G., Fazio, L. L., Martino, M. C., Rossi, G., Tattoli, I., Liparoti, V., De Castro, C., Molinaro, A., Philpott, D. J., and Bernardini, M. L. (2008) Muramylpeptide shedding modulates cell sensing of *Shigella flexneri*. *Cell Microbiol.* **10**, 682–695
 60. Boyle, E. C., and Finlay, B. B. (2003) Bacterial pathogenesis: exploiting cellular adherence. *Curr. Opin. Cell Biol.* **15**, 633–639
 61. Hansen, D. S., Mestre, F., Alberti, S., Hernández-Allés, S., Alvarez, D., Doménech-Sánchez, A., Gil, J., Merino, S., Tomás, J. M., and Benedí, V. J. (1999) *Klebsiella pneumoniae* lipopolysaccharide O typing: revision of prototype strains and O-group distribution among clinical isolates from different sources and countries. *J. Clin. Microbiol.* **37**, 56–62
 62. Skurnik, M., Venho, R., Bengoechea, J. A., and Moriyón, I. (1999) The lipopolysaccharide outer core of *Yersinia enterocolitica* serotype O:3 is required for virulence and plays a role in outer membrane integrity. *Mol. Microbiol.* **31**, 1443–1462
 63. Conde-Álvarez, R., Arce-Gorvel, V., Iriarte, M., Manček-Keber, M., Barquero-Calvo, E., Palacios-Chaves, L., Chacón-Díaz, C., Chaves-Olarte, E., Martirosyan, A., von Bargen, K., Grilló, M. J., Jerala, R., Brandenburg, K., Llobet, E., Bengoechea, J. A., Moreno, E., Moriyón, I., and Gorvel, J. P. (2012) The lipopolysaccharide core of *Brucella abortus* acts as a shield against innate immunity recognition. *PLoS Pathog.* **8**, e1002675
 64. Shelburne, S. A., 3rd, Sahasrohbajane, P., Suber, B., Keith, D. B., Davenport, M. T., Horstmann, N., Kumaraswami, M., Olsen, R. J., Brennan, R. G., and Musser, J. M. (2011) Niche-specific contribution to streptococcal virulence of a MalR-regulated carbohydrate-binding protein. *Mol. Microbiol.* **81**, 500–514
 65. van Bueren, A. L., Higgins, M., Wang, D., Burke, R. D., and Boraston, A. B. (2007) Identification and structural basis of binding to host lung glycogen by streptococcal virulence factors. *Nat. Struct. Mol. Biol.* **14**, 76–84
 66. Regueiro, V., Moranta, D., Campos, M. A., Margareto, J., Garmendia, J., and Bengoechea, J. A. (2009) *Klebsiella pneumoniae* increases the levels of Toll-like receptors 2 and 4 in human airway epithelial cells. *Infect. Immun.* **77**, 714–724
 67. Wieland, C. W., van Lieshout, M. H., Hoogendijk, A. J., and van der Poll, T. (2011) Host defence during *Klebsiella pneumoniae* pneumonia relies on haematopoietic-expressed Toll-like receptors 4 and 2. *Eur. Respir. J.* **37**, 848–857
 68. Izquierdo, L., Coderch, N., Piqué, N., Bedini, E., Corsaro, M. M., Merino, S., Fresno, S., Tomás, J. M., and Regué, M. (2003) The *Klebsiella pneumoniae wabG* gene: role in biosynthesis of the core lipopolysaccharide and virulence. *J. Bacteriol.* **185**, 7213–7221