




ORIGINAL ARTICLE

Impact of corticosteroid use on the clinical response and prognosis in patients with cardiac sarcoidosis who underwent an upgrade to cardiac resynchronization therapy

Yuya Suzuki MD¹  | Mitsuru Takami MD, PhD¹ | Koji Fukuzawa MD, PhD² |
 Kunihiro Kiuchi MD, PhD²  | Akira Shimane MD³ | Jun Sakai MD¹ |
 Toshihiro Nakamura MD¹  | Atsuke Yatomi MD¹ | Yusuke Sonoda MD¹ |
 Hiroyuki Takahara MD¹ | Kazutaka Nakasone MD¹ | Kyoko Yamamoto MD¹ |
 Ken-ichi Tani MD¹ | Hidehiro Iwai MD¹ | Yusuke Nakanishi MD¹ | Ken-ichi Hirata MD, PhD^{1,2}

¹Division of Cardiovascular Medicine, Department of Internal Medicine, Kobe University Graduate School of Medicine, Kobe, Hyogo, Japan

²Section of Arrhythmia, Division of Cardiovascular Medicine, Department of Internal Medicine, Kobe University Graduate School of Medicine, Kobe, Hyogo, Japan

³Division of Cardiovascular Medicine, Hyogo Brain and Heart Center, Himeji, Hyogo, Japan

Correspondence

Mitsuru Takami, Division of Cardiovascular Medicine, Department of Internal Medicine, Kobe University Graduate School of Medicine, 7-5-2 Kusunoki-cho, Chuo-ku, Kobe, Hyogo 650-0017, Japan. Email: mitsuru_takamin@yahoo.co.jp

Abstract

Background: Corticosteroids are widely used in patients with cardiac sarcoidosis (CS). In addition, upgrading to cardiac resynchronization therapy (CRT) is sometimes needed. This study aimed to investigate the impact of corticosteroid use on the clinical outcomes following CRT upgrades.

Methods: A total of 48 consecutive patients with non-ischemic cardiomyopathies who underwent CRT upgrades were retrospectively reviewed and divided into three groups: group 1 included CS patients taking corticosteroids before the CRT upgrade ($n = 7$), group 2, CS patients not taking corticosteroids before the CRT upgrade ($n = 10$), and group 3, non-CS patients ($n = 31$). The echocardiographic response, heart failure hospitalizations, and cardiovascular deaths were evaluated.

Results: The baseline characteristics during CRT upgrades exhibited no significant differences in the echocardiographic data between the three groups. After the CRT upgrade, responses regarding the ejection fraction (EF) and end-systolic volume (ESV) were significantly lower in CS patients than non-CS patients (Δ EF: group 1, 6.7% vs. group 2, 7.7% vs. group 3, 13.6%; $p = .039$, Δ ESV: 3.0 ml vs. -12.7 ml vs. -37.2 ml; $p = .008$). The rate of an echocardiographic response was lowest in group 1 (29%). There were, however, no significant differences in the cumulative freedom from a composite outcome among the three groups ($p = .19$). No cardiovascular deaths occurred in group 1.

Conclusion: The echocardiographic response to an upgrade to CRT and the long-term prognosis in patients with CS should be carefully evaluated because of the complex etiologies and impact of immunosuppressive therapy.

KEYWORDS

cardiac resynchronization therapy, cardiac sarcoidosis, corticosteroid, upgrade and heart failure

This is an open access article under the terms of the [Creative Commons Attribution-NonCommercial-NoDerivs](https://creativecommons.org/licenses/by-nc-nd/4.0/) License, which permits use and distribution in any medium, provided the original work is properly cited, the use is non-commercial and no modifications or adaptations are made.

© 2022 The Authors. *Journal of Arrhythmia* published by John Wiley & Sons Australia, Ltd on behalf of the Japanese Heart Rhythm Society.

1 | INTRODUCTION

Sarcoidosis is a multisystem granulomatous disease of unknown etiology characterized by noncaseating granulomas in involved organs.¹ Cardiac involvement in sarcoidosis occurs in 20%–27% of cases in the United States and may be as high as 58% in Japan.² Cardiac sarcoidosis (CS) manifestations include various types of tachy- and brady-arrhythmias, left ventricular (LV) systolic dysfunction, and sudden death, and it is increasingly recognized for its poor prognosis.^{3–6} Corticosteroids are widely used as the first-line immunosuppressants for patients with CS, especially in patients who have active inflammation in the myocardium. However, patients with CS are sometimes not diagnosed in the early stage of the disease (e.g., during pacemaker or implantable cardioverter-defibrillator [ICD] implantations for an atrioventricular block or ventricular arrhythmias), and later are diagnosed with CS because of a cardiac function decline.⁷ For those patients, it is not well known which therapeutic strategy should come first, corticosteroids therapy or an upgrade to CRT therapy from a pacemaker or ICD. Generally, the clinical response and long-term survival have been less favorable in patients undergoing CRT upgrades than de novo implantations.⁸ However, the pathophysiology of CS greatly differs from that of other cardiomyopathies, and corticosteroid therapy would have a potential to affect the clinical response and long-term prognosis. Thus, in the present study, we investigated the echocardiographic response and long-term prognosis in patients with non-ischemic cardiomyopathy (NICM) who underwent CRT upgrade therapy and analyzed the impact of the timing of the initiation of the corticosteroid therapy on the clinical outcomes in patients with CS.

2 | METHODS

2.1 | Patients

We retrospectively reviewed the databases of the CRT upgrade cases with NICM at Kobe University Graduate School of Medicine between 2006 and 2019 and Hyogo Brain and Heart Center between 2010 and 2019. The upgrade to CRT from a pacemaker or ICD was performed in patients with an LV ejection fraction (LVEF) of $\leq 35\%$ and New York Heart Association (NYHA) class of II–IV. The selection of CRT with or without a defibrillator was determined by the attending physicians. The CRT procedure upgrade was carried out with the use of standard transvenous techniques.

CS was diagnosed according to the current guidelines.¹¹ Seven patients with CS had a histological diagnosis. The other patients with CS were diagnosed based on the clinical and imaging findings, including echocardiography, ⁶⁷Ga scintigraphy, myocardial perfusion scintigraphy (^{99m}Tc-tetrofosmin), positron emission tomography/computed tomography (PET/CT), and cardiac magnetic resonance.

The enrolled patients who underwent a CRT upgrade were divided into three groups: group 1 was comprised of patients with CS who had taken corticosteroids before the CRT upgrade; group 2 was comprised

of patients with CS who had not taken corticosteroids before the CRT upgrade; group 3 was comprised of patients with other NICMs. We compared the following outcomes among the three groups: (1) echocardiographic response to CRT (before and 6 months after the CRT upgrade), (2) sustained ventricular tachyarrhythmia events, (3) composite outcomes of cardiovascular death and hospitalizations for worsening heart failure.

This retrospective study complied with the principles of the Declaration of Helsinki. The study was approved by the ethics committee of Kobe University Hospital (No. B200243).

2.2 | Consent

The patients consented to the use of their anonymized clinical data for research purposes by the opt-out fashion.

2.3 | Assessment of echocardiography

According to the recommendations from the American Society of Echocardiography, we measured the LV end-diastolic volume (LVEDV), LVESV, and LVEF using the biplane Simpson's method. Mitral regurgitation (MR) was categorized into five grades, as follows: none = grade 0; trace = grade 1; mild = grade 2; moderate = grade 3; and severe = grade 4. Two-dimensional echocardiography at rest was performed at baseline and 6 months follow-up to assess the LVEF and LVESV. Responders to CRT were defined as patients displaying a 15% reduction in the LVESV at least 6 months after the CRT implantation.

2.4 | Statistical analysis

All data are presented as means, standard deviations (SDs), or proportions. The variables were compared with the one-way analysis of variance (ANOVA) followed by post hoc tests using the Bonferroni correction (Kruskal–Wallis test when appropriate) or chi-squared test (Fisher's exact test, if an inadequate number of assumptions). A Kaplan–Meier analysis was performed to assess the recurrence-free survival, and a log-rank test was used to compare the groups. All analyses were performed using IBM®SPSS® software, version 26 (IBM Corporation), and a value of $p < .05$ was considered statistically significant.

3 | RESULTS

3.1 | Baseline patient characteristics

A total of 48 patients with NICM who received an upgrade to CRT on the basis of the guidelines was reviewed. Of those, 17 (35%) patients were diagnosed with CS. In the CS patients, 7 were administered corticosteroids before the CRT upgrade (group 1), and 10 were not (group 2). Thirty-one patients were diagnosed with non-CS (group 3). [Table 1](#) presents the patient characteristics during the upgrade

TABLE 1 Baseline characteristics

	group1 (n = 7)	Group 2 (n = 10)	Group 3 (n = 31)	p value
Epidemiological background				
Age, years	65 ± 6	71 ± 9	67 ± 11	.27
Age ≥ 75 years	1 (14)	5 (50)	7 (23)	.23
Age by first device implantation, years	56 ± 5	66 ± 10	59 ± 11	.13
Duration from first device implantation to CRT upgrade (days)	3508 (1980–6741)	2136 (1771–3884)	1914 (718–4274)	.40
Male	1 (14)	6 (60)	21 (68)	.041
Body mass index (kg/m ²)	22 ± 2	23 ± 3	22 ± 4	.42
Comorbidities				
Hypertension	1 (14)	2 (20)	9 (29)	.7
Diabetes mellitus	0 (0)	3 (30)	8 (26)	.37
Hyperlipidemia	1 (14)	1 (10)	7 (23)	.86
Chronic kidney disease	2 (29)	2 (20)	9 (29)	.9
COPD	0 (0)	0 (0)	0 (0)	
Stroke	0 (0)	1 (10)	3 (10)	.61
High-grade atrio-ventricular block	6 (86)	10 (100)	21 (68)	.12
Sick sinus syndrome	1 (14)	0 (0)	3 (10)	.6
RV pacing dependent	6 (86)	10 (100)	26 (84)	.45
Previous device				
Pacemaker	5 (71)	10 (100)	23 (74)	.19
ICD	2 (29)	0 (0)	8 (26)	.19
History of ventricular arrhythmias	4 (57)	5 (50)	10 (32)	.43
Prior VT ablation	1 (14)	3 (30)	2 (6)	.083
Atrial fibrillation	1 (14)	3 (30)	16 (52)	.15
Permanent	0 (0)	0 (0)	8 (26)	.12
HF hospitalization	2 (29)	5 (50)	18 (58)	.34
NYHA functional class	2 (2–3)	3 (2–3)	3 (3–3.5)	.06
Coronary Artery Disease	0 (0)	0 (0)	1 (3)	.76
Valvular heart disease	0 (0)	0 (0)	4 (13)	.6
Dilated cardiomyopathy	0 (0)	0 (0)	15 (48)	.0015
Hypertrophic cardiomyopathy	0 (0)	0 (0)	2 (6)	.56
Medication				
β-blocker	6 (86)	9 (90)	26 (84)	.89
ACEi/ARB	5 (71)	9 (90)	21 (68)	.4
Spironolactone	4 (57)	6 (60)	19 (61)	.98
Diuretics	4 (57)	8 (80)	23 (74)	.64
Amiodarone	2 (29)	3 (30)	5 (16)	.5
Cardiotonics	1 (14)	1 (10)	4 (13)	.96
Corticosteroids	7 (100)	6 (60)	0 (0)	<.0001
Dosage before CRT upgrade (mg)	5.0 (2.5–10)	0 (0–0)	0 (0–0)	.001
Maintenance dosage (mg)	2.5 (2.5–10)	4.1 (0–10)	0 (0–0)	.037
Electrocardiography				
QRS duration (msec)	173 ± 20	178 ± 21	185 ± 32	.56
Paced QRS	6 (86)	10 (100)	26 (84)	.45
Native QRS - LBBB	1 (14)	0 (0)	4 (12.9)	.63

TABLE 1 (Continued)

	group1 (n = 7)	Group 2 (n = 10)	Group 3 (n = 31)	p value
Echocardiographic parameters				
LA-diameter (mm)	40 ± 14	42 ± 4	49 ± 8	.025
LVEF (%)	27 ± 9	26 ± 7	26.0 ± 7.0	.98
LVEDV (ml)	168 ± 46	144 ± 46	175 ± 51	.24
LVESV (ml)	127 ± 44	105 ± 33	127.2 ± 37.4	.28
MR	3 (2–3)	2 (1.75–3.25)	2 (2–2.5)	.16
Laboratory data				
BNP (pg/ml)	321 (205–767)	271 (102–509)	188 (135–245)	.7
Creatinine (mg/dl)	0.93 (0.68–1.29)	0.84 (0.79–1.20)	0.73 (0.69–1.28)	.84
Hemoglobin (mg/dl)	12.4 ± 1.5	12.8 ± 1.6	12.1 ± 2.6	.7
Angiotensin converting enzyme (U/L)	7.0 (1.9–16.2)	8.7 (5.3–15.8)		
Type of device				
CRT-P	3 (43)	4 (40)	13 (42)	.99
CRT-D	4 (57)	6 (60)	18 (58)	.99

Notes: Normal distribution data: means ± standard deviations.

Non-normal distribution data: medians and interquartile ranges.

Abbreviations: ACEi, angiotensin-converting enzyme inhibitor; ARB, angiotensin-receptor blocker; BNP, brain natriuretic peptide; COPD, chronic obstructive pulmonary disease; CRT, cardiac resynchronization therapy; CRT-D, cardiac resynchronization therapy with a defibrillator; CRT-P, cardiac resynchronization therapy pacing with a pacemaker; CS, cardiac sarcoidosis; HF, heart failure; ICD, implantable cardioverter defibrillator; LA, left atrium; LBBB, left bundle branch block; LVEDV, left ventricular end-diastolic volume; LVEF, left ventricular ejection fraction; LVESV, left ventricular end-systolic volume; MR, mitral regurgitation; NYHA, New York Heart Association; VT, ventricular tachycardia.

to CRT. Although no significant differences were observed in the age, LVEF, LVEDV, LVESV, serum creatinine, plasma BNP, and previous frequency of right ventricular pacing, more female patients were included in group 1 than in groups 2 and 3. The LA diameter was largest in group 3.

3.2 | Use of the corticosteroids

Figure 1A shows the timing of the initiation of the corticosteroid therapy and maintenance dose in patients with CS (groups 1 and 2). In group 1, the steroid therapy was started at a median of 127 (12–176) months before the upgrade to CRT.

In group 2, corticosteroids were introduced at a median of 3.2 (2.5–4.1) months after the upgrade to CRT in six patients. No corticosteroid therapy was introduced in four patients. The reason was (1) no increased FDG uptake was observed in the heart on the PET/CT in three patients, and (2) one patient died before the introduction of the corticosteroids.

3.3 | PET-CT and perfusion scintigraphy

Figure 1B shows the comparison of the increased FDG uptake in the heart detected by the PET/CT scan between group 1 and 2. The increased FDG uptake was significantly less seen in group 1 than group 2 at the time of the upgrade to CRT (1 of 7 [14%] vs. 7 of 10 [70%], $p = .0498$).

Figure 1C indicates the defect area of myocardial perfusion scintigraphy (^{99m}Tc -tetrofosmin) in groups 1 and 2 at the time of the CRT upgrade. A defect in the LV septum was more often seen in group 2 than group 1, but a defect in the LV lateral was more often seen in group 1.

We performed a follow-up PET-CT in the patients with an increased FDG uptake. At 3 months after the CRT upgrade, a disappearance of the increased FDG uptake was observed by increasing the dosage of the corticosteroids in a patient in group 1. Five of 7 patients underwent a follow-up PET/CT in group 2. Three of the 5 patients achieved a disappearance of the increased FDG uptake with the introduction of corticosteroids at 3 months after the CRT upgrade. In the remaining 2 patients, a lesser FDG uptake was seen with the introduction of corticosteroids at 3 months after the CRT upgrade.

3.4 | Echocardiographic response

A comparison of the echocardiographic changes following the CRT upgrade between the 3 groups is shown in Figure 2. A decrease in the LVESV (ΔLVESV) and increase in the LVEF (ΔLVEF) was most often seen in group 3. Also, the rate of an echocardiographic response rate was the highest in group 3 and lowest in group 1 (group 1: 2 of 7 patients [29%] vs. group 2: 5 of 10 patients [50%] vs. group 3: 21 of 27 patients [78%], $p = .029$).

Figure 3 shows the echocardiographic change between that before and 6 months after the upgrade to CRT in each group. There

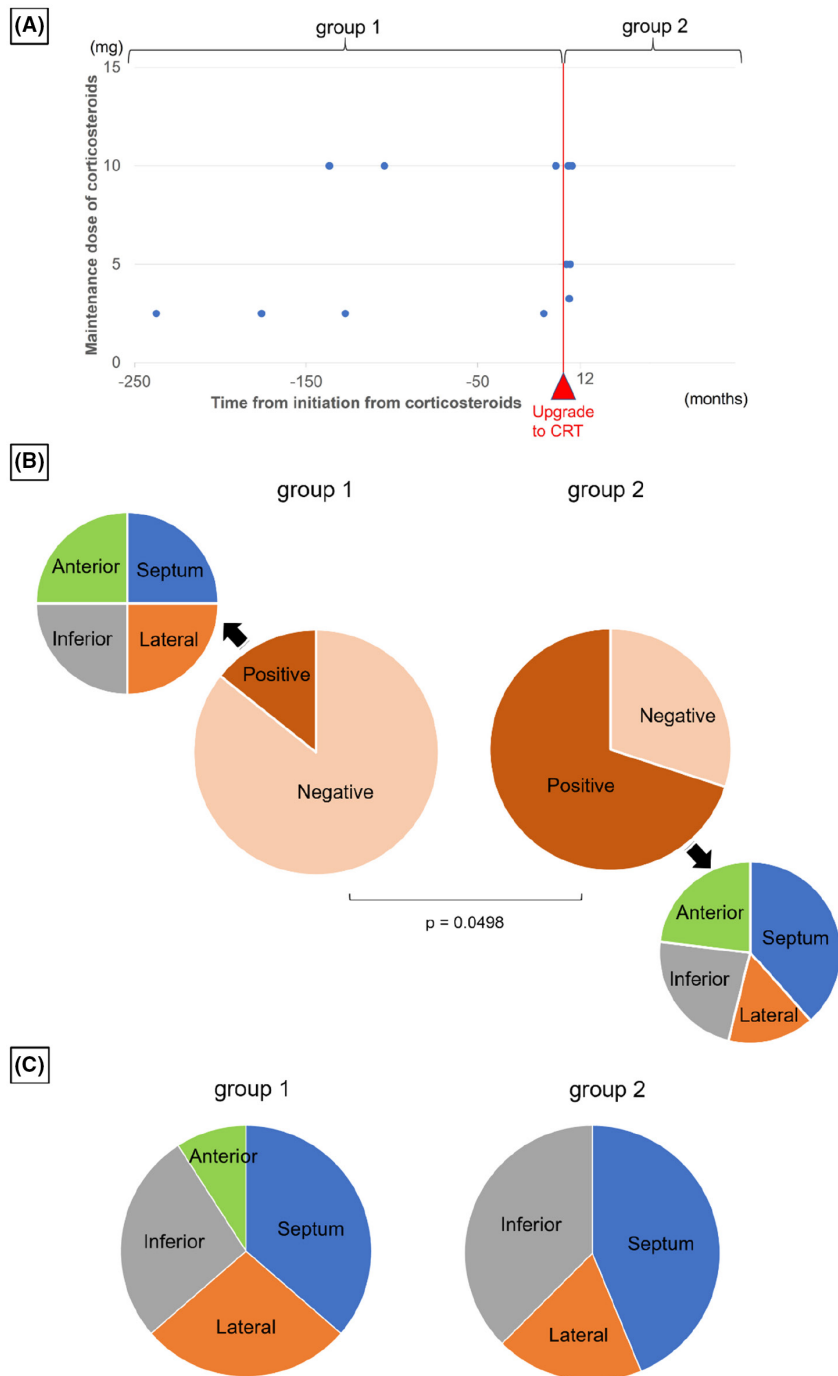


FIGURE 1 Differences between group 1 and group 2. (A) Timing the initiation of the corticosteroids and maintenance dose in patients with CS. Each blue dot indicates the time from the initiation of corticosteroids and the maintenance dose in each patient. (B) Comparison of the increased FDG uptake in the heart detected by PET/CT scans between groups 1 and 2 at the time of the CRT upgrade (large pie charts). The sites of the increased FDG uptake in the heart are shown in the small pie charts. (C) Defect area on the myocardial perfusion scintigraphy (^{99m}Tc -tetrofosmin) between the two groups at the time of the CRT upgrade. CS, cardiac sarcoidosis; CRT, cardiac resynchronization therapy. FDG = fluorodeoxyglucose, PET/CT = positron emission tomography/computed tomography, positive = increased FDG uptake in myocardium on PET/CT, negative = not increased FDG uptake in myocardium on PET/CT. Septum = septum of left ventricle, Lateral = lateral wall of the left ventricle, Inferior = inferior wall of the left ventricle, Anterior = anterior wall of left ventricle

was a significant reduction in the ESV in group 3 (from 126 ± 34 ml to 91 ± 39 ml, $p < .0001$) but not in groups 1 and 2. There was a significant improvement in the EF in groups 2 and 3 (from $26 \pm 7\%$ to $34 \pm 8\%$, $p = .002$ and from $26 \pm 7\%$ to $39 \pm 9\%$, $p < .0001$, respectively) but not in groups 1.

3.5 | Ventricular arrhythmias

During the follow-up, ventricular arrhythmias (consisting of ventricular tachycardia or ventricular fibrillation, which needed anti-tachycardia pacing or defibrillation) after the upgrade to CRT were

observed in 4 patients in group 1 (57%), 5 in group 2 (50%), and 12 in group 3 (39%) ($p = .58$).

3.6 | Long-term outcomes

A Kaplan–Meier analysis showed there was no significant difference in the composite outcome of hospitalizations from worsening heart failure and cardiovascular death among the three groups after the upgrade to CRT ($p = .19$). There were also no significant differences in cardiovascular death ($p = .36$) (Figure 4). In group 1, however, the incidence of those adverse events tended to be lower than that

FIGURE 2 The comparison of the echocardiographic response among the CS patients taking corticosteroids before the CRT upgrade (group 1), CS patients not taking corticosteroids before the CRT upgrade (group 2), and non-CS patients (group 3). CS, cardiac sarcoidosis; LVEF, left ventricular ejection fraction; LVESV, left ventricular end-systolic volume

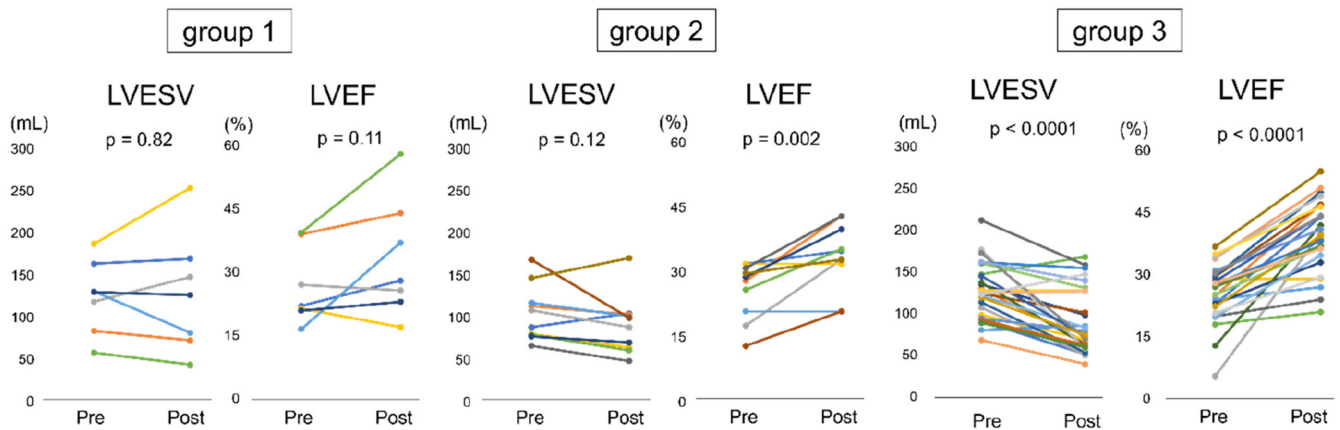
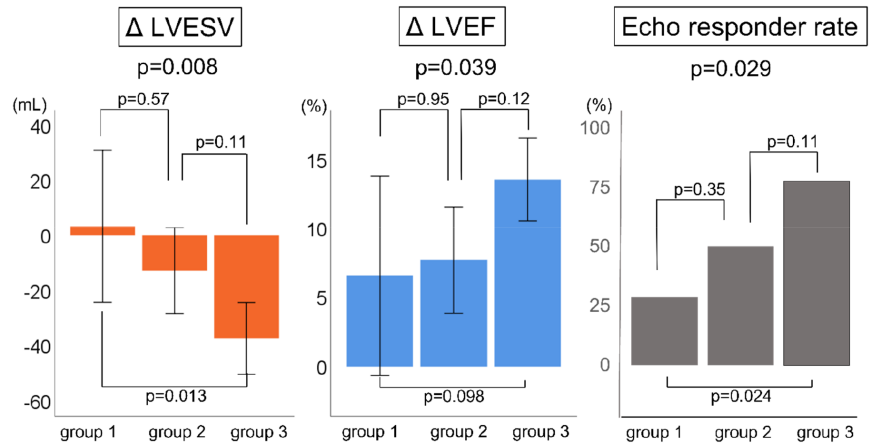


FIGURE 3 The change in the LVESV and LVEF before and after the CRT upgrade in each group (CS patients taking corticosteroids before the CRT upgrade [group 1], CS patients not taking corticosteroids before CRT upgrade [group 2] and non-CS patients [group 3]). LVEF, left ventricular ejection fraction; LVESV, left ventricular end-systolic volume; pre = before the CRT upgrade, post = six months after the CRT upgrade

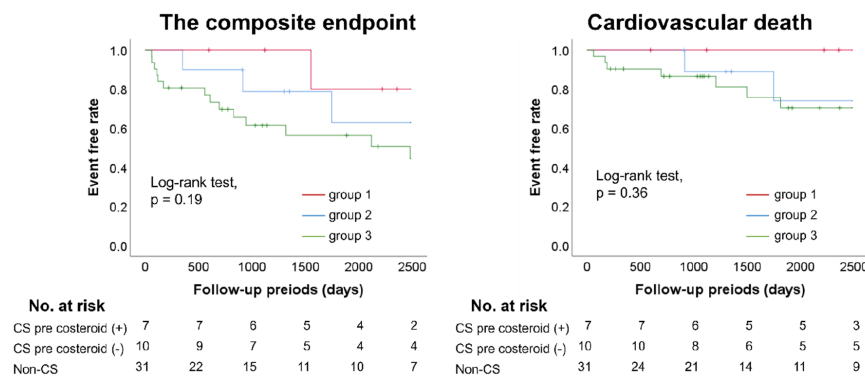


FIGURE 4 Kaplan-Meier curve demonstrating the freedom from (a) the composite endpoint of cardiovascular death and hospitalizations for worsening heart failure and (b) cardiovascular death after a CRT upgrade among the CS patients taking corticosteroids before the CRT upgrade (group 1), CS patients not taking corticosteroid before the CRT upgrade (group 2), and non-CS patients (group 3). CS, cardiac sarcoidosis; CRT, cardiac resynchronization therapy

in the other groups. No cardiovascular death occurred during the follow-up period in group 1. Two Cardiovascular deaths were observed in group 2 (heart failure [n = 1], cerebral infarction [n = 1]). Seven cardiovascular deaths were observed in group 3 (heart failure

[n = 5], ventricular arrhythmias [n = 2]). The mean recurrence-free period for the composite endpoint was longer in group 1 (2311 days, [95% CI; 1980–2642 days]) than group 2 (1989 days, [95% CI; 1494–2483 days]) and group 3 (1615 days, [95% CI; 1241–1988 days]).

4 | DISCUSSION

This was the first study to investigate the impact of corticosteroid therapy on the efficacy of an upgrade to CRT therapy in patients with CS. Previous studies showed that a high echocardiographic response to CRT therapy was associated with a good long-term prognosis.^{9,10}

The present study demonstrated that the echocardiographic response to an upgrade to CRT was lower in patients with CS than in those with other etiologies of NICM. The patients with CS who had taken corticosteroids before the upgrade to CRT (group 1) demonstrated the lowest echocardiographic response. However, the cumulative freedom from hospitalizations from worsening heart failure and cardiovascular death did not significantly differ between the patients with CS and those with other etiologies. In particular, the group 1 patients presented with the lowest cardiovascular death and hospitalizations.

4.1 | Upgrade to CRT in patients with CS

CS has a complex etiology with granulomatous inflammation of the heart, and the pathogenesis includes the activation of the macrophages or lymphocytes, granuloma development, and fibrosis.¹ The published data regarding the outcome of CRT therapy in patients with CS is limited,¹¹⁻¹³ and the efficacy of an upgrade to CRT from a pacemaker or ICD in patients with CS is still controversial.^{11,12} The echocardiographic response in patients with CS (groups 1 and 2) was lower than that in those with other etiologies (group 3). The possible mechanism was that the progression or fixation of the myocardial fibrosis from sarcoidosis exceeded the improvement in the cardiac function from the CRT therapy in patients with CS. Also, the echocardiographic response to an upgrade to CRT was the lowest in group 1. Corticosteroids are beneficial for suppressing inflammation from CS but have the potential to promote fibrotic changes in the myocardium.¹⁴ It is notable that a defect area in the lateral LV was more often seen in group 1 than group 2. The greater fibrotic changes in the lateral LV area would interfere with appropriate bi-ventricular pacing and affect the echocardiographic CRT response. This could explain the lowest echocardiographic response being observed in group 1.

On the contrary, it has been advocated that the term “CRT responder” should be reconsidered. Given the natural course of the progression of heart failure in CS, slowing down or suppressing the progression of the heart failure might be a sufficient effect from CRT therapy.¹⁵ In the present study, however, we could not determine the outcome of the CRT upgrade in the CS patients because of the small number of enrolled patients. Larger studies are warranted to evaluate the CRT effect on the clinical outcomes.

4.2 | Corticosteroid therapy and long-term prognosis

A prospective randomized trial to investigate the efficacy of corticosteroids in cardiac sarcoidosis is lacking. Several studies have

shown that early initiation of corticosteroids results in better clinical outcomes.^{16,17} The results in the present study were concordant with that. Although the echocardiographic response in group 1 was poorer than that in the other groups, the cardiovascular death and heart failure hospitalizations in group 1 were low. Early initiation of the corticosteroid therapy could prevent recurrent inflammation and an expansion of the sarcoidosis lesions in the heart, and it also might suppress the systemic inflammation in CS patients. The systemic inflammation can cause a higher risk of coronary artery disease, atrial fibrillation, and cerebrovascular accidents in addition to heart failure.¹⁸ Suppression of the systemic inflammation might reduce those cardiovascular adverse events even though there is a poor echocardiographic response to an upgrade to CRT.

4.3 | Clinical implications

In patients with CS, the echocardiographic response following a CRT upgrade should be carefully evaluated because of the complex etiology and effect of the corticosteroids. Physicians might be concerned about an increase in the risk of device infections when the steroid therapy is initiated prior to the operation for the CRT upgrade. However, this study's investigation implied that corticosteroid therapy might be better if it precedes an upgrade to CRT in CS patients who have cardiac dysfunction and are eligible for CRT therapy.

4.4 | Limitations

This was a retrospective study that involved a small sample size, which might have led to a statistical bias. Controlled studies are required to confirm the effects of CRT upgrades in patients with CS. There was a possibility that the differences in the baseline characteristics in each group (gender and LA diameter) affected the incidence of composite outcomes after the CRT upgrade. In general, women tend to have a better CRT response and clinical outcome than men.^{19,20} Although more female patients were included in group 1, the echocardiographic response in group 1 was the worst. Therefore, we considered that the good long-term prognosis despite the lack of a high echocardiographic response in group 1 was influenced by corticosteroid therapy.

5 | CONCLUSION

Patients with CS who had taken corticosteroids before the upgrade to CRT demonstrated the lowest echocardiographic response. However, the clinical outcome did not significantly differ between the patients with CS with or without corticosteroids before the CRT upgrade and those with other etiologies. Unlike the patients with other NICMs, the echocardiographic response to an upgrade to CRT in patients with CS should be carefully evaluated because of the complex etiologies and impact of immunosuppressive therapy.

ACKNOWLEDGMENT

The authors would like to thank Mr. John Martin for his linguistic assistance.

CONFLICT OF INTEREST

The Section of Arrhythmia is supported by an endowment from Abbott JAPAN and Medtronic JAPAN and has received a scholarship fund from Biotronik JAPAN. Ken-ichi Hirata chairs the Section, and Koji Fukuzawa and Kunihiko Kiuchi belong to the Section. However, all authors report no conflict of interest for this manuscript's contents.

AUTHOR CONTRIBUTIONS

Yuya Suzuki: clinical practice/data sampling/drafting article. Mitsuru Takami: concept/design/data analysis/interpretation/drafting article. Koji Fukuzawa: data collection/statics. Kunihiko Kiuchi: data collection/statics. Akira Shimane: data collection/statics. Jun Sakai: data collection/statics. Toshihiro Nakamura: data collection/statics. Atsuke Yatomi: data collection/statics. Yusuke Sonoda: data collection/statics. Hiroyuki Takahara: data collection/statics. Kazutaka Nakasone: data collection/statics. Kyoko Yamamoto: data collection/statics. Ken-ichi Tani: data collection/statics. Hidehiro Iwai: data collection/statics. Yusuke Nakanishi: data collection/statics. Ken-ichi Hirata: approval of the article.

ORCID

Yuya Suzuki  <https://orcid.org/0000-0002-6790-0914>

Kunihiko Kiuchi  <https://orcid.org/0000-0002-9305-4854>

Toshihiro Nakamura  <https://orcid.org/0000-0003-0521-3008>

REFERENCES

- Valeyre D, Prasse A, Nunes H, Uzunhan Y, Brillet PY, Müller-Quernheim J. Sarcoidosis. *Lancet*. 2014;383(9923):1155–67.
- Matsui Y, Iwai K, Tachibana T, Fruie T, Shigematsu N, Izumi T, et al. Clinicopathological study of fatal myocardial sarcoidosis. *Ann N Y Acad Sci*. 1976;278:455–69.
- Silverman KJ, Hutchins GM, Bulkley BH. Cardiac sarcoid: a clinicopathologic study of 84 unselected patients with systemic sarcoidosis. *Circulation*. 1978;58(6):1204–11.
- Fleming HA, Bailey SM. The prognosis of sarcoid heart disease in the United Kingdom. *Ann N Y Acad Sci*. 1986;465:543–50.
- Roberts WC, McAllister HA Jr, Ferrans VJ. Sarcoidosis of the heart. a clinicopathologic study of 35 necropsy patients (group 1) and review of 78 previously described necropsy patients (group 11). *Am J Med*. 1977;63(1):86–108.
- Sekhri V, Sanal S, Delorenzo LJ, Aronow WS, Maguire GP. Cardiac sarcoidosis: a comprehensive review. *Arch Med Sci*. 2011;7(4): 546–54.
- Soejima K, Yada H. The work-up and management of patients with apparent or subclinical cardiac sarcoidosis: with emphasis on the associated heart rhythm abnormalities. *J Cardiovasc Electrophysiol*. 2009;20(5):578–83.
- Schwertner WR, Behon A, Merkel ED, Tokodi M, Kovács A, Zima E, et al. Long-term survival following upgrade compared with de novo cardiac resynchronization therapy implantation: a single-Centre, high-volume experience. *Europace*. 2021;23(8):1310–8.
- van der Heijden AC, Höke U, Thijssen J, Willem Borleffs CJ, Wolterbeek R, Schalij MJ, et al. Long-term echocardiographic outcome in super-responders to cardiac resynchronization therapy and the association with mortality and defibrillator therapy. *Am J Cardiol*. 2016;118(8):1217–24.
- Ypenburg C, van Bommel RJ, Borleffs CJ, Bleeker GB, Boersma E, Schalij MJ, et al. Long-term prognosis after cardiac resynchronization therapy is related to the extent of left ventricular reverse remodeling at midterm follow-up. *J Am Coll Cardiol*. 2009;53(6):483–90.
- Sairaku A, Yoshida Y, Nakano Y, Hirayama H, Maeda M, Hashimoto H, et al. Cardiac resynchronization therapy for patients with cardiac sarcoidosis. *Europace*. 2017;19(5):824–30.
- Yufu K, Kondo H, Shinohara T, Kawano K, Ishii Y, Miyoshi M, et al. Outcome of patients with cardiac sarcoidosis who received cardiac resynchronization therapy: comparison with dilated cardiomyopathy patients. *J Cardiovasc Electrophysiol*. 2017;28(2):177–81.
- Patel D, Trulock KM, Toro S, Grimaldi A, Gonzalez M, Moennich LA, et al. Effect of cardiac resynchronization therapy on left ventricular remodeling in patients with cardiac sarcoidosis. *Am J Cardiol*. 2019;123(2):329–33.
- Terasaki F, Azuma A, Anzai T, Ishizaka N, Ishida Y, Isoe M, et al. JCS 2016 guideline on diagnosis and treatment of cardiac sarcoidosis - digest version. *Circ J*. 2019;83(11):2329–88.
- Nakai T, Ikeya Y, Kogawa R, Okumura Y. Cardiac resynchronization therapy: current status and near-future prospects. *J Cardiol*. 2022;79(3):352–7.
- Kato Y, Morimoto S, Uemura A, Hiramitsu S, Ito T, Hishida H. Efficacy of corticosteroids in sarcoidosis presenting with atrioventricular block. *Sarcoidosis Vasc Diffuse Lung Dis*. 2003;20(2):133–7.
- Chiu CZ, Nakatani S, Zhang G, Tachibana T, Ohmori F, Yamagishi M, et al. Prevention of left ventricular remodeling by long-term corticosteroid therapy in patients with cardiac sarcoidosis. *Am J Cardiol*. 2005;95(1):143–6.
- Ungprasert P, Crowson CS, Matteson EL. Risk of cardiovascular disease among patients with sarcoidosis: a population-based retrospective cohort study, 1976–2013. *Eur Respir J*. 2017;49(2):1601290.
- Varma N, Mittal S, Prillinger JB, Snell J, Dalal N, Piccini JP. Survival in women versus men following implantation of pacemakers, defibrillators, and cardiac resynchronization therapy devices in a large, Nationwide cohort. *J Am Heart Assoc*. 2017;6(5):e005031.
- Varma N, Lappe J, He J, Niebauer M, Manne M, Tchou P. Sex-specific response to cardiac resynchronization therapy: effect of left ventricular size and QRS duration in left bundle branch block. *JACC Clin Electrophysiol*. 2017;3(8):844–53.

How to cite this article: Suzuki Y, Takami M, Fukuzawa K, Kiuchi K, Shimane A, Sakai J, et al. Impact of corticosteroid use on the clinical response and prognosis in patients with cardiac sarcoidosis who underwent an upgrade to cardiac resynchronization therapy. *J Arrhythmia*. 2022;38:400–407. <https://doi.org/10.1002/joa3.12697>