

RESEARCH ARTICLE

Open Access

# Updated molecular epidemiology of carbapenem-non-susceptible *Escherichia coli* in Taiwan: first identification of KPC-2 or NDM-1-producing *E. coli* in Taiwan

Ling Ma<sup>1</sup>, L Kristopher Siu<sup>1</sup>, Jung-Chung Lin<sup>2</sup>, Tsu-Lan Wu<sup>3</sup>, Chang-Phone Fung<sup>4</sup>, Jann-Tay Wang<sup>5</sup>, Po-Liang Lu<sup>6,7\*</sup> and Yin-Ching Chuang<sup>8,9\*</sup>

## Abstract

**Background:** The global spread and increasing incidence of carbapenem-resistant Enterobacteriaceae have resulted in treatment and public health concerns. Here, we present an investigation of the molecular mechanisms and clonality of carbapenem-non-susceptible *Escherichia coli* (CnSEC) based on a nationwide survey in Taiwan.

**Methods:** We collected 32 and 43 carbapenem-non-susceptible *E. coli* isolates in 2010 and 2012, respectively. The genes encoding carbapenemases and plasmidic AmpC-type and extended-spectrum  $\beta$ -lactamases (ESBLs) were analyzed by polymerase chain reaction (PCR). The major porin channels OmpF and OmpC were evaluated by sodium dodecyl sulfate-polyacrylamide gel electrophoresis (SDS-PAGE). Molecular typing was performed with pulsed-field gel electrophoresis (PFGE) and multi-locus sequence typing (MLST).

**Results:** The resistance rates of CnSEC isolates to cefazolin, cefotaxime, ceftoxitin, ceftazidime, and ertapenem were all 100%, and most (94.7%) isolates were CMY producers. The main mechanism of CnSEC in Taiwan is via plasmidic AmpC  $\beta$ -lactamase CMY-2 and DHA-1 in combination with the loss of OmpC/F. In 2010, one isolate was confirmed to harbor *bla*<sub>IMP-8</sub>; a KPC-2 producer and an NDM-1 producer were detected in 2012. No isolate had VIM- or OXA-carbapenemases. ST131 was the predominant ST type (33.3%). PFGE revealed no large cluster in CnSEC isolates in Taiwan.

**Conclusions:** The co-existence of plasmidic AmpC  $\beta$ -lactamase and outer membrane protein loss is the main mechanism for CnSEC in Taiwan. The emergence of KPC-2 and NDM-1 in 2012 and the predominance of ST131 warrant close monitoring and infection control.

## Background

*Escherichia coli* is an important member of Enterobacteriaceae that is evolving drug resistance mechanisms. Extended-spectrum  $\beta$ -lactamases (ESBLs) conferring resistance to extended-spectrum cephalosporins lead to treatment failure by penicillins and cephalosporins and are prevalent in *E. coli* isolates from hospital patients, community members, farm animals, and food. Carbapenems

are powerful antibiotics that are not inactivated by ESBLs and AmpC  $\beta$ -lactamases and therefore are regarded as the last line of treatment for infections by ESBL producers. Carbapenem resistance in Enterobacteriaceae, particularly *Klebsiella pneumoniae*, has recently been reported worldwide, whereas carbapenem-resistant *E. coli* is relatively rare [1]. Nonetheless, carbapenem resistance in *E. coli* should be closely monitored because of its potential to spread in both hospital and community settings [2].

The mechanisms of carbapenem resistance in Enterobacteriaceae are the presence of either carbapenemase or a combination of  $\beta$ -lactamases and porin loss [3-7]. There are three types of carbapenemases that hydrolyze

\* Correspondence: d830166@cc.kmu.edu.tw; chuangkenneth@hotmail.com

<sup>6</sup>Department of Internal Medicine, Kaohsiung Medical University Hospital, 100 Tzyou 1st Road, Kaohsiung City, Taiwan

<sup>8</sup>Department of Internal Medicine and Medical Research, Chi Mei Medical Center, Tainan, Taiwan

Full list of author information is available at the end of the article



by sodium dodecyl sulfate-polyacrylamide gel electrophoresis (SDS-PAGE) through 7.5% polyacrylamide-6 M urea gels and visualized by Coomassie Blue staining (Bio-Rad). A reference strain, *E. coli* ATCC25922, was included as a control. Figure 1 shows representative SDS-PAGE results to illustrate the interpretation of OmpC and OmpF loss.

#### Multi-locus sequence typing (MLST)

MLST with seven housekeeping genes [20], *adhA* (adenylate kinase), *fumC* (fumarate hydratase), *gyrB* (DNA gyrase), *icd* (isocitrate dehydrogenase), *mdh* (malate dehydrogenase), *purA* (adenylosuccinate synthetase), and *recA* (ATP/GTP motif), was performed on all isolates according to the protocol described on the *E. coli* MLST website (<http://mlst.ucc.ie/mlst/dbs/Ecoli/documents/primersColi.html>). The allele sequences and sequence types (STs) were verified at the <http://mlst.ucc.ie/mlst/dbs/Ecoli/> website.

#### Results and discussion

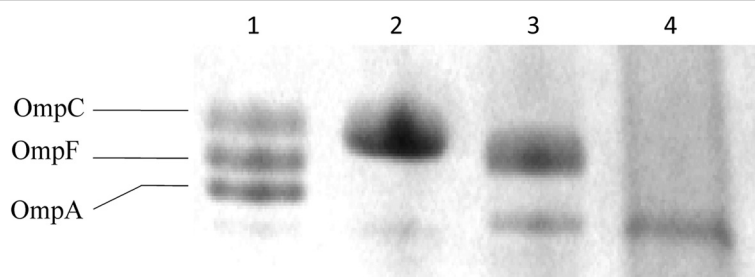
All isolates were resistant to cefazolin, cefotaxime, ceftazidime, cefoxitin, and ertapenem. With the exception of amikacin, the rates of resistance to the other tested antimicrobial agents increased in 2012. For the eight hospitals that participated in both the 2010 and 2012 surveillance projects, the resistance rates of imipenem, meropenem, doripenem, and cefepime increased significantly ( $P < 0.05$ ) (Table 1). Indeed, the resistant rates to imipenem, meropenem, and doripenem were 56.3%, 31.3%, and 15.6%, respectively, in 2010 and increased to 72.1%, 58.1%, and 51.2%, respectively, in 2012. All isolates were susceptible to tigecycline and colistin in 2010, whereas the resistant rates to tigecycline and colistin were 7.0% and 2.3%, respectively, in 2012.

Of the 75 *E. coli* isolates, five were not typable by PFGE. No major cluster was found, except for two pulsotypes with 4 and 2 isolates each (Figure 2). The PFGE results suggested that clonal spread was not responsible for the emergence of carbapenem-resistant *E. coli*.

Based on MLST, ST131 was found to be the major sequence type. Of the 75 *E. coli* isolates, ST131 was detected in 25 isolates (9 isolates in 2010 and 16 isolates in 2012). Seven isolates were assigned to ST410, and six isolates were assigned to ST457. ST405 and ST101 were found in three isolates each. The remaining isolates exhibited diverse ST types. The isolates of MLST type ST131 showed no significant difference in distribution in 2010 and 2012 and displayed highly diverse PFGE patterns.

In 2010, all the isolates were negative for KPC-, NDM-, VIM-, and OXA- carbapenemases, though one isolate was confirmed to harbor *bla*<sub>IMP-8</sub>. In 2012, one KPC-2-producing isolate and one NDM-1-producing isolate were detected, whereas no IMP-, VIM-, and OXA-type carbapenemases were found.

In Asia, KPC-producing Enterobacteriaceae was first detected in *K. pneumoniae* in China in 2004 [21] and was also soon found in *Citrobacter freundii*, *E. coli*, and *Serratia marcescens* [22,23]. In Taiwan, the first three KPC-2-positive patients were detected in *K. pneumoniae* isolated from patients having been hospitalized in China [24,25]. Since then, KPC-2-producing *K. pneumoniae* has been increasingly reported in Taiwan [26], though few cases of KPC-positive *E. coli* have been reported [27]. In the present report, we identify the first KPC-2-positive *E. coli* from Taiwan. This KPC-2-containing *E. coli* was obtained from a 78-year-old female who had not been abroad but was transferred from a regional hospital to a middle Taiwan medical center for a urinary tract infection. The KPC-2-containing isolate also produced TEM-1, CMY-2, and CTX-M-3/CTX-M-22  $\beta$ -lactamases and was classified as MLST sequence type 410 (ST410). To date, KPC-producing *E. coli* has only been reported in Israel, the USA, China, Brazil, France, Greece, and Ireland [10,12,22,28-31], and two major sequence types containing KPC-carbapenemases have been reported. ST131 was reported in France [31], the USA [27], and Ireland [30]; ST410 was reported in Greece [10] and Israel [1] (ST471 in the Pasteur Institute typing



**Figure 1 Outer membrane profile of ATCC control isolates and clinical isolates of *E. coli* from this study.** Lane 1 shows the expression of OmpC, OmpF, and OmpA in the ATCC25922 control strain. Lane 2 shows OmpF deficiency; Lane 3 shows OmpC deficiency; Lane 4 shows both OmpF and OmpC deficiency.

**Table 1 Antimicrobial susceptibility testing results for carbapenem-non-susceptible *E. coli* isolates in 2010 and 2012**

Antibiotics	ertapenem-non-susceptible <i>E. coli</i> (8 hospitals) and imipenem- or meropenem-non-susceptible <i>E. coli</i> (17 hospitals)							
	2010 (n = 32)				2012 (n = 43)			
	MIC range (µg/ml)	MIC <sub>50</sub> (µg/ml)	MIC <sub>90</sub> (µg/ml)	Resistance (%)	MIC range (µg/ml)	MIC <sub>50</sub> (µg/ml)	MIC <sub>90</sub> (µg/ml)	Resistance (%)
Ertapenem	2- ≥ 8	≥8	≥8	100	1- ≥ 8	≥8	≥8	100
Imipenem	1- ≥ 8	4	≥8	56.3	1- ≥ 8	≥8	≥8	72.1
Meropenem	0.12- ≥ 8	2	8	31.3	0.5- ≥ 8	4	≥8	58.1
Doripenem	0.12- ≥ 4	1	4	15.6	0.5- ≥ 4	≥4	≥4	51.2
Amikacin	≤4-64	4	32	6.3	≤4-32	≤4	16	0
Gentamicin	≤1- ≥ 16	2	≥16	40.6	≤1- ≥ 16	4	≥16	45.7
Cefazolin	≥32	≥32	≥32	100	≥32	≥32	≥32	100
Cefotaxime	4- ≥ 64	≥64	≥64	100	32- ≥ 64	≥64	≥64	100
Cefoxitin	≥32	≥32	≥32	100	≥32	≥32	≥32	100
Ceftazidime	16- ≥ 32	≥32	≥32	100	≥32	≥32	≥32	100
Cefepime	0.25- ≥ 32	8	≥32	18.8	2- ≥ 32	16	≥32	46.5
Ciprofloxacin	0.06- ≥ 4	≥4	≥4	75.0	≤0.06- ≥ 4	≥4	≥4	79.1
Tigecycline	≤0.25-1	≤0.25	0.5	0	≤0.25- ≥ 4	≤0.25	0.5	7.0
Colistin	≤0.5-2	1	2	0	≤0.5- ≥ 4	≤0.5	1	2.3
SXT <sup>a</sup>	0.06- ≥ 16	≥16	≥16	62.5	≤2/38- ≥ 4/76	≥4/76	≥4/76	76.7

<sup>a</sup>SXT: Trimethoprim/sulfamethoxazole. Trimethoprim/sulfamethoxazole MICs are presented according to the concentration of trimethoprim in 2010.

system is the same as ST410 in the UCC typing system). The possibility that ST131 and ST410 are future epidemic clones of KPC-2-producing *E. coli* worldwide is of great concern.

We also report the first NDM-1-harboring *E. coli* isolate in Taiwan. Interestingly, an NDM-1-positive *K. pneumoniae* was detected in the same hospital during the same period and was included in the study to compare the two NDM-1-containing plasmids. The two NDM-1 plasmids from *K. pneumoniae* and *E. coli* were successfully transferred to the recipient isolate *E. coli* J53. Additionally, the plasmid digestion profiles of the two NDM-1 plasmids revealed different patterns (Figure 3), indicating that plasmid spread is less likely. Our *E. coli* NDM-1 producer possessed TEM-1 and CMY-2 but did not encode CTX-M β-lactamases and 16S rRNA methylase genes, which are commonly found in *bla*<sub>NDM-1</sub>-positive isolates [32]. Thus far, ten sequence types (ST101, ST405, ST648, ST90, ST410, ST156, ST131, ST167, ST224, and ST38) of *E. coli* have been reported to contain NDM-1 [33]. However, the ST type of the NDM-1 clone described herein is ST345, which has not yet been reported to harbor NDM-1. This finding supports a conclusion that *bla*<sub>NDM-1</sub> occurs in *E. coli* belonging to diverse phylogenetic lineages [34] and also emphasizes the need to study the plasmids carrying *bla*<sub>NDM-1</sub> in *E. coli*.

All 75 isolates carried AmpC β-lactamase CMY and/or DHA-1; most of the isolates produced CMY-2 (68 isolates,

90.7%), and one CMY-4-carrying isolate was detected in 2012. DHA-1 was detected in six isolates in 2010 and one isolate in 2012. CTX-M-type ESBLs were detected in 13 isolates (40.6%) in 2010 (ten isolates exhibited CTX-M-14, and three each exhibited the CTX-M-14/CTX-M-15, CTX-M-14/CTX-M-55, or CTX-M-27/CTX-M-55 combinations), and ten isolates (23.3%) harbored CTX-M genes in 2012 (three isolates harboring CTX-M-14, three with CTX-M-79, two with CTX-M-15, and one each with the CTX-M-14/CTX-M-79, CTX-M-3/CTX-M-15 combination).

The 75 carbapenem-non-susceptible *E. coli* isolates showed the loss of at least one porin, whereas 42 (56%) isolates had lost both OmpC and OmpF. Sixteen (21.3%) isolates exhibited OmpF loss, and ten (13.3%) isolates exhibited OmpC loss.

Our study revealed that the main mechanism of imipenem or meropenem non-susceptibility in Taiwan is AmpC β-lactamase CMY-2 and DHA-1 in combination with OmpC/F loss (Table 2). It has been previously verified that such a combination of mechanisms can contribute to carbapenem resistance [6,7]. Most of the isolates were CMY producers (94.7%), and this most common CMY enzyme (CMY-2) of carbapenem-non-susceptible *E. coli* is also frequently found in cephamycin-resistant *E. coli* in community-acquired urinary tract infections in Taiwan [35].

*E. coli* sequence type ST131 is a pandemic clone associated with the CTX-M-15 gene and is resistant to fluoroquinolones [36]. Clone ST131 potentially harbors



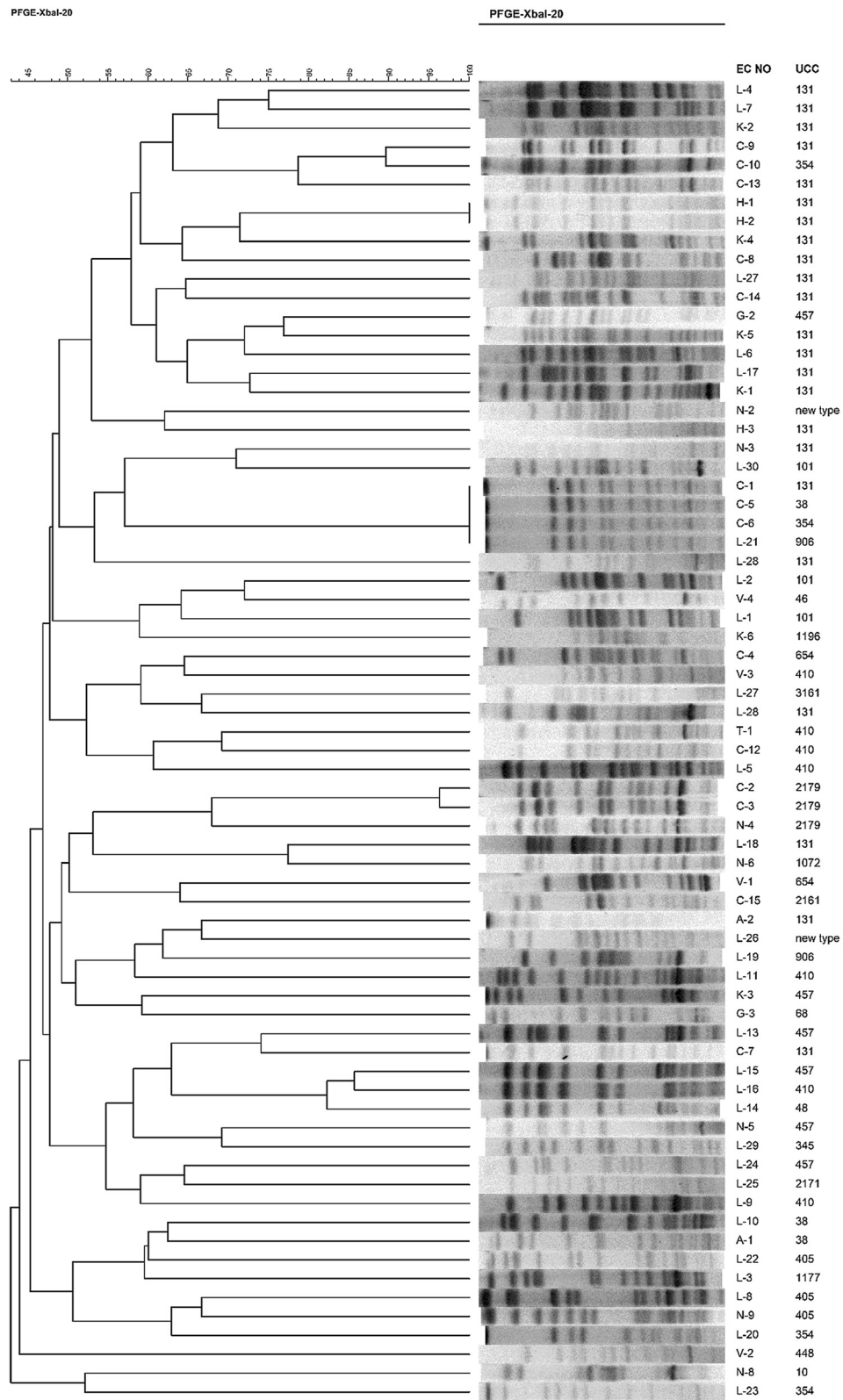
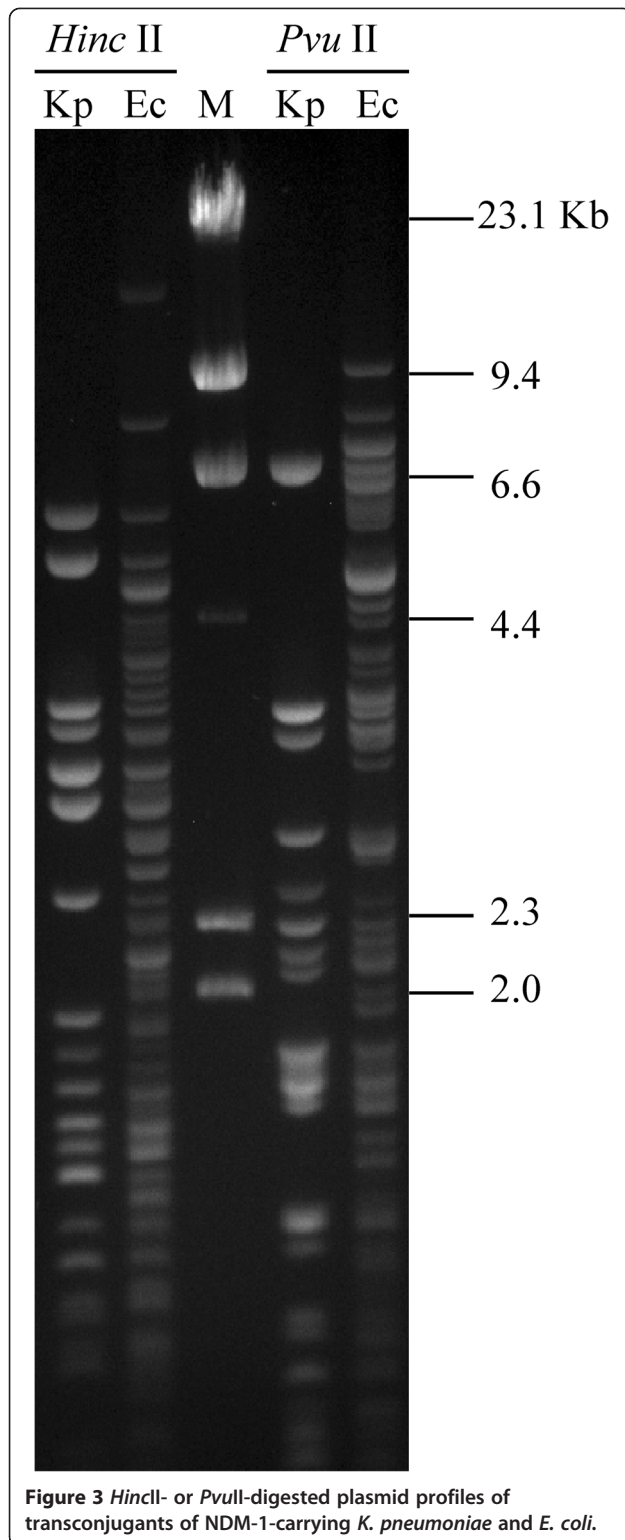


Figure 2 A dendrogram of the pulse-field gel electrophoresis (PFGE) fingerprinting results and the ST types of 70 typable *E. coli* isolates.



a variety of  $\beta$ -lactamase genes, most commonly CTX-M  $\beta$ -lactamases, followed by TEM, SHV, and CMY  $\beta$ -lactamases [13], and its dissemination has contributed to the spread of CTX-M-15-producing *E. coli*

**Table 2** Outer membrane profiles for carbapenem-non-susceptible *E. coli* isolates in 2010 and 2012

$\beta$ -lactamases	Outer membrane profile <sup>a</sup>							
	2010 (8 hospitals; n = 32)				2012 (17 hospitals; n = 43)			
	F/C	$\Delta$ C	$\Delta$ F	$\Delta$ C/F	F/C	$\Delta$ C	$\Delta$ F	$\Delta$ C/F
Carbapenemase								
KPC-2	0	0	0	0	1	0	0	0
NDM-1	0	0	0	0	0	0	1	0
IMP-8	0	0	0	1	0	0	0	0
AmpC only								
CMY	1	4	10	12	3	6	5	27
DHA	0	0	1	3	0	0	0	0
ESBL								
CTX-M	0	0	0	0	0	0	0	0
SHV	0	0	0	0	0	0	0	0

<sup>a</sup>Most isolates have multiple  $\beta$ -lactamase genes. The priority for the determination of  $\beta$ -lactamase in this table is carbapenemases, AmpC enzymes, and then ESBLs. No duplicate calculation was performed for each isolate.

[37]. Of the 75 carbapenem-non-susceptible *E. coli* isolates, 25 (33.3%) were the ST131 type; of these, 23 isolates displayed a resistant to ciprofloxacin. However, most of the isolates (18/25, 72%) did not produce CTX-M-type  $\beta$ -lactamases. Thus, our results showed that *E. coli* ST131 is the predominant ST type of carbapenem non-susceptible *E. coli* in Taiwan but that it is not highly associated with CTX-M ESBLs. Our findings are similar to the results of Kim et al. [27] and support the conclusion that the ability of the ST131 clone to acquire resistance genes under selective pressure could be high.

We found that the low prevalence of CTX-M-type  $\beta$ -lactamases was most likely linked to the identification of a low amikacin resistant rate in this study. Amikacin resistance mediated by 16S rRNA methylase (*armA* and *rmtB*) in Gram-negative bacteria is an emerging resistance mechanism [38], and our previous study found that the 16S rRNA methylase gene (*armA* and/or *rmtB*) and the CTX-M gene were located on the same plasmid [39]. The low prevalence of CTX-M-type  $\beta$ -lactamases and the low amikacin resistant rate suggested the lack of an endemic plasmid to transfer both *bla*<sub>CTX-M</sub> and 16S rRNA methylase genes for carbapenem-non-susceptible *E. coli*.

## Conclusions

OmpC and/or OmpF deficiency combined with AmpC (major CMY-2 and DHA-1) was found to be the major mechanism for the development of carbapenem non-susceptibility in Taiwan. The dominant clone of carbapenem-non-susceptible *E. coli* in Taiwan is ST131,

which has also been found worldwide, and the high prevalence of this ST type illustrates the epidemic potential of this clone. The introduction of KPC-2 and NDM-1 into *E. coli* in Taiwan warrants further monitoring with regard to the epidemiology of carbapenem resistance, the resistance mechanisms, and the potential epidemic clones.

#### Competing interests

The authors declare that they have no competing interests.

#### Authors' contributions

ML and PLL contributed to the data analysis and wrote the primary draft of the manuscript. LKS, JCL, TLW, CPF, JTW, PLL, and YCC participated in the study design and experiments. PLL and YCC reviewed and revised the paper. All authors have read and approved the final manuscript.

#### Acknowledgements

This work was funded by the project DOH101-DC-1024 (Epidemiology of multidrug-resistant bacteria in Taiwan: mechanisms of antibiotic resistance and clinical relevance) grant from the Taiwan Centers for Disease Control. All authors declare no conflict of interest. The authors thank the Taiwan Carbapenem Resistance Study Group for the collection of isolates from Keelung Chang Gung Memorial Hospital, Tri-Service General Hospital, Taipei Veterans General Hospital, Linkou Chang Gung Memorial Hospital, China Medical University Hospital, Chiayi Chang Gung Memorial Hospital, Kaohsiung Chang Gung Memorial Hospital, Kaohsiung Medical University Hospital, National Taiwan University Hospital, Taoyuan Armed Forces General Hospital, Buddhist Tzu Chi General Hospital, Hualien Armed Forces General Hospital, National Yang-Ming University Hospital, Taichung Armed Forces General Hospital, Chi Mei Medical Center, Kaohsiung Armed Forces General Hospital, and Kaohsiung Municipal Hsiao-Kang Hospital. We would like to express our gratitude to Dr. Jodge Jacoby for providing the *E. coli* J53 recipient strain.

#### Author details

<sup>1</sup>National Institutes of Infectious Diseases and Vaccinology, National Health Research Institutes, Miaoli, Taiwan. <sup>2</sup>Division of Infectious Diseases and Tropical Medicine, Department of Internal Medicine, Tri-Service General Hospital, National Defense Medical Center, Taipei, Taiwan. <sup>3</sup>Department of Clinical Pathology, Linkou Chang Gung Memorial Hospital, Taoyuan, Taiwan. <sup>4</sup>Section of Infectious Diseases, Department of Medicine, Taipei Veterans General Hospital, Taipei, Taiwan. <sup>5</sup>Division of Infectious Diseases, Department of Medicine, National Taiwan University Hospital, Taipei, Taiwan. <sup>6</sup>Department of Internal Medicine, Kaohsiung Medical University Hospital, 100 Tzyou 1st Road, Kaohsiung City, Taiwan. <sup>7</sup>College of Medicine, Kaohsiung Medical University, 100 Tzyou 1st Road, Kaohsiung City, Taiwan. <sup>8</sup>Department of Internal Medicine and Medical Research, Chi Mei Medical Center, Tainan, Taiwan. <sup>9</sup>Department of Internal Medicine, Chi Mei Medical Center, Liouying, Tainan, Taiwan.

Received: 26 August 2013 Accepted: 12 December 2013

Published: 20 December 2013

#### References

- Goren MG, Navon-Venezia S, Chmelnitsky I, Carmeli Y: Carbapenem-resistant KPC-2-producing *Escherichia coli* in a Tel Aviv Medical Center, 2005 to 2008. *Antimicrob Agents Chemother* 2010, **54**(6):2687–2691.
- Schwaber MJ, Carmeli Y: Carbapenem-resistant *Enterobacteriaceae*: a potential threat. *JAMA* 2008, **300**(24):2911–2913.
- Patel JB, Rasheed JK, Kitchel B: Carbapenemases in *Enterobacteriaceae*: activity, epidemiology, and laboratory detection. *Clin Microbiol NewsL* 2009, **31**(8):55–62.
- Queenan AM, Bush K: Carbapenemases: the versatile beta-lactamases. *Clin Microbiol Rev* 2007, **20**(3):440–458.
- Poirel L, Heritier C, Spicq C, Nordmann P: In vivo acquisition of high-level resistance to imipenem in *Escherichia coli*. *J Clin Microbiol* 2004, **42**(8):3831–3833.
- Stapleton PD, Shannon KP, French GL: Carbapenem resistance in *Escherichia coli* associated with plasmid-determined CMY-4 beta-lactamase production and loss of an outer membrane protein. *Antimicrob Agents Chemother* 1999, **43**(5):1206–1210.
- Goessens WH, van der Bij AK, van Boxtel R, Pitout JD, van Ulsen P, Melles DC, Tommassen J: Antibiotic trapping by plasmid-encoded CMY-2 beta-lactamase combined with reduced outer membrane permeability as a mechanism of carbapenem resistance in *Escherichia coli*. *Antimicrob Agents Chemother* 2013, **57**(8):3941–3949.
- Patel G, Bonomo RA: "Stormy waters ahead": global emergence of carbapenemases. *Front Microbiol* 2013, **4**:48.
- Livermore DM: Current epidemiology and growing resistance of gram-negative pathogens. *Korean J Intern Med* 2012, **27**(2):128–142.
- Navon-Venezia S, Chmelnitsky I, Leavitt A, Schwaber MJ, Schwartz D, Carmeli Y: Plasmid-mediated imipenem-hydrolyzing enzyme KPC-2 among multiple carbapenem-resistant *Escherichia coli* clones in Israel. *Antimicrob Agents Chemother* 2006, **50**(9):3098–3101.
- Nordmann P, Poirel L: Emerging carbapenemases in gram-negative aerobes. *Clin Microbiol Infect* 2002, **8**(6):321–331.
- Bratu S, Brooks S, Burney S, Kochar S, Gupta J, Landman D, Quale J: Detection and spread of *Escherichia coli* possessing the plasmid-borne carbapenemase KPC-2 in Brooklyn, New York. *Clin Infect Dis* 2007, **44**(7):972–975.
- Rogers BA, Sidjabat HE, Paterson DL: *Escherichia coli* O25b-ST131: a pandemic, multiresistant, community-associated strain. *J Antimicrob Chemother* 2011, **66**(1):1–14.
- Clinical and Laboratory Standards Institute: *Performance Standards for Antimicrobial Susceptibility Testing*, Twenty-Second informational supplement. CLSI M100-S22-U. Wayne, PA; 2011.
- Clinical and Laboratory Standards Institute: *Methods for Dilution Antimicrobial Susceptibility Tests for Bacteria That Grow Aerobically*, Approved standard Ninth Edition. Wayne, PA; 2012.
- Alvarez M, Tran JH, Chow N, Jacoby GA: Epidemiology of conjugative plasmid-mediated AmpC beta-lactamases in the United States. *Antimicrob Agents Chemother* 2004, **48**(2):533–537.
- Eckert C, Gautier V, Saladin-Allard M, Hidri N, Verdet C, Ould-Hocine Z, Barnaud G, Delisle F, Rossier A, Lambert T, et al: Dissemination of CTX-M-type beta-lactamases among clinical isolates of *Enterobacteriaceae* in Paris, France. *Antimicrob Agents Chemother* 2004, **48**(4):1249–1255.
- D'Agata EM, Gerrits MM, Tang YW, Samore M, Kusters JG: Comparison of pulsed-field gel electrophoresis and amplified fragment-length polymorphism for epidemiological investigations of common nosocomial pathogens. *Infect Control Hosp Epidemiol* 2001, **22**(9):550–554.
- Freire P, Vieira HL, Furtado AR, de Pedro MA, Arraiano CM: Effect of the morphogene *bolA* on the permeability of the *Escherichia coli* outer membrane. *FEMS Microbiol Lett* 2006, **260**(1):106–111.
- Wirth T, Falush D, Lan R, Colles F, Mensa P, Wieler LH, Karch H, Reeves PR, Maiden MC, Ochman H, et al: Sex and virulence in *Escherichia coli*: an evolutionary perspective. *Mol Microbiol* 2006, **60**(5):1136–1151.
- Wei ZQ, Du XX, Yu YS, Shen P, Chen YG, Li LJ: Plasmid-mediated KPC-2 in a *Klebsiella pneumoniae* isolate from China. *Antimicrob Agents Chemother* 2007, **51**(2):763–765.
- Cai JC, Zhou HW, Zhang R, Chen GX: Emergence of *Serratia marcescens*, *Klebsiella pneumoniae*, and *Escherichia coli* Isolates possessing the plasmid-mediated carbapenem-hydrolyzing beta-lactamase KPC-2 in intensive care units of a Chinese hospital. *Antimicrob Agents Chemother* 2008, **52**(6):2014–2018.
- Nordmann P, Cuzon G, Naas T: The real threat of *Klebsiella pneumoniae* carbapenemase-producing bacteria. *Lancet Infect Dis* 2009, **9**(4):228–236.
- Chung KP, Tseng SP, Huang YT, Tsai TH, Teng LJ, Hsueh PR: Arrival of *Klebsiella pneumoniae* carbapenemase (KPC)-2 in Taiwan. *J Antimicrob Chemother* 2011, **66**(5):1182–1184.
- Lauderdale TL, Shi ZY, Lin CF, Lai JF, Tan MC, Wang JT, Chang SC: KPC-2-producing sequence type 11 *Klebsiella pneumoniae* detected in Taiwan. *Antimicrob Agents Chemother* 2012, **56**(4):2207–2208.
- Chiu SK, Wu TL, Chuang YC, Lin JC, Fung CP, Lu PL, Wang JT, Wang LS, Siu LK, Yeh KM: National surveillance study on carbapenem non-susceptible *Klebsiella pneumoniae* in Taiwan: the emergence and rapid dissemination of KPC-2 carbapenemase. *PLoS One* 2013, **8**(7):e69428.
- Kim YA, Qureshi ZA, Adams-Haduch JM, Park YS, Shutt KA, Doi Y: Features of infections due to *Klebsiella pneumoniae* carbapenemase-producing *Escherichia coli*: emergence of sequence type 131. *Clin Infect Dis* 2012, **55**(2):224–231.

28. D'Alincourt Carvalho-Assef AP, Leao RS, da Silva RV, Ferreira AG, Seki LM, Asensi MD, Marques EA: **Escherichia coli** producing KPC-2 carbapenemase: first report in Brazil. *Diagn Microbiol Infect Dis* 2010, **68**(3):337–338.
29. Mavroidi A, Miriagou V, Malli E, Stefanos A, Dalekos GN, Tzouveleki LS, Petinaki E: **Emergence of Escherichia coli** sequence type 410 (ST410) with KPC-2 beta-lactamase. *Int J Antimicrob Agents* 2012, **39**(3):247–250.
30. Morris D, Boyle F, Ludden C, Condon I, Hale J, O'Connell N, Power L, Boo TW, Dhanji H, Lavallee C, et al: **Production of KPC-2 carbapenemase by an Escherichia coli** clinical isolate belonging to the international ST131 clone. *Antimicrob Agents Chemother* 2011, **55**(10):4935–4936.
31. Naas T, Cuzon G, Gaillot O, Courcol R, Nordmann P: **When carbapenem-hydrolyzing beta-lactamase Kpc meets Escherichia coli** ST131 in France. *Antimicrob Agents Chemother* 2011, **55**(10):4933–4934.
32. Bercot B, Poirel L, Nordmann P: **Updated multiplex polymerase chain reaction for detection of 16S rRNA methylases: high prevalence among NDM-1 producers.** *Diagn Microbiol Infect Dis* 2011, **71**(4):442–445.
33. Castanheira M, Deshpande LM, Mathai D, Bell JM, Jones RN, Mendes RE: **Early dissemination of NDM-1- and OXA-181-producing Enterobacteriaceae** in Indian hospitals: report from the SENTRY Antimicrobial Surveillance Program, 2006–2007. *Antimicrob Agents Chemother* 2011, **55**(3):1274–1278.
34. Mushtaq S, Irfan S, Sarma JB, Doumith M, Pike R, Pitout J, Livermore DM, Woodford N: **Phylogenetic diversity of Escherichia coli** strains producing NDM-type carbapenemases. *J Antimicrob Chemother* 2011, **66**(9):2002–2005.
35. Wu TL, Chia JH, Su LH, Chiu CH, Kuo AJ, Ma L, Siu LK: **CMY-2 beta-lactamase-carrying community-acquired urinary tract Escherichia coli: genetic correlation with Salmonella enterica** serotypes Choleraesuis and Typhimurium. *Int J Antimicrob Agents* 2007, **29**(4):410–416.
36. Coque TM, Novais A, Carattoli A, Poirel L, Pitout J, Peixe L, Baquero F, Canton R, Nordmann P: **Dissemination of clonally related Escherichia coli** strains expressing extended-spectrum beta-lactamase CTX-M-15. *Emerg Infect Dis* 2008, **14**(2):195–200.
37. Peirano G, Pitout JD: **Molecular epidemiology of Escherichia coli** producing CTX-M beta-lactamases: the worldwide emergence of clone ST131 O25:H4. *Int J Antimicrob Agents* 2010, **35**(4):316–321.
38. Doi Y, Arakawa Y: **16S ribosomal RNA methylation: emerging resistance mechanism against aminoglycosides.** *Clin Infect Dis* 2007, **45**(1):88–94.
39. Ma L, Lin CJ, Chen JH, Fung CP, Chang FY, Lai YK, Lin JC, Siu LK: **Widespread dissemination of aminoglycoside resistance genes armA and rmtB** in *Klebsiella pneumoniae* isolates in Taiwan producing CTX-M-type extended-spectrum beta-lactamases. *Antimicrob Agents Chemother* 2009, **53**(1):104–111.

doi:10.1186/1471-2334-13-599

**Cite this article as:** Ma et al.: Updated molecular epidemiology of carbapenem-non-susceptible *Escherichia coli* in Taiwan: first identification of KPC-2 or NDM-1-producing *E. coli* in Taiwan. *BMC Infectious Diseases* 2013 **13**:599.

**Submit your next manuscript to BioMed Central and take full advantage of:**

- Convenient online submission
- Thorough peer review
- No space constraints or color figure charges
- Immediate publication on acceptance
- Inclusion in PubMed, CAS, Scopus and Google Scholar
- Research which is freely available for redistribution

Submit your manuscript at  
www.biomedcentral.com/submit

