

# Identifying mangrove-coral habitats in the Florida Keys

Christina A. Kellogg<sup>1</sup>, Ryan P. Moyer<sup>2</sup>, Mary Jacobsen<sup>2</sup> and Kimberly Yates<sup>1</sup>

<sup>1</sup> St. Petersburg Coastal and Marine Science Center, U.S. Geological Survey, St. Petersburg, FL, USA

<sup>2</sup> Florida Fish & Wildlife Conservation Commission, Fish and Wildlife Research Institute, St. Petersburg, FL, USA

## ABSTRACT

Coral reefs are degrading due to many synergistic stressors. Recently there have been a number of global reports of corals occupying mangrove habitats that provide a supportive environment or refugium for corals, sheltering them by reducing stressors such as oxidative light stress and low pH. This study used satellite imagery and manual ground-truthing surveys to search for mangrove-coral habitats in the Florida Keys National Marine Sanctuary and then collected basic environmental parameters (temperature, salinity, dissolved oxygen, pH<sub>NBS</sub>, turbidity) at identified sites using a multi-parameter water quality sonde. Two kinds of mangrove-coral habitats were found in both the Upper and Lower Florida Keys: (1) prop-root corals, where coral colonies were growing directly on (and around) mangrove prop roots, and (2) channel corals, where coral colonies were growing in mangrove channels under the shade of the mangrove canopy, at deeper depths and not in as close proximity to the mangroves. Coral species found growing on and directly adjacent to prop roots included *Porites porites* (multiple morphs, including *P. divaricata* and *P. furcata*), *Siderastrea radians*, and *Favia fragum*. Channel coral habitats predominantly hosted *S. radians* and a few *S. siderea*, although single colonies of *Solenastrea bournoni* and *Stephanocoenia intersepta* were observed. Although clear, low-turbidity water was a consistent feature of these mangrove-coral habitats, the specific combination of environmental factors that determine which mangrove habitats are favorable for coral recruitment remains to be defined. Circumstantial evidence suggests additional coral communities existed on mangrove shorelines of oceanside and backcountry islands until destroyed, likely by Hurricane Irma. These mangrove-coral habitats may be climate refugia for corals and could be included in ecosystem management plans and considered for their applications in coral restoration.

Submitted 29 May 2020  
Accepted 30 July 2020  
Published 24 August 2020

Corresponding author  
Christina A. Kellogg,  
ckellogg@usgs.gov

Academic editor  
Isabella Bordon

Additional Information and  
Declarations can be found on  
page 18

DOI 10.7717/peerj.9776



Distributed under  
Creative Commons CC0

**OPEN ACCESS**

**Subjects** Ecology, Ecosystem Science, Marine Biology, Climate Change Biology, Natural Resource Management

**Keywords** Mangrove, Coral, Refugia, Habitat

## INTRODUCTION

Coral reef ecosystems sustain up to 25% of fisheries in the tropics (*Garcia & De Leiva Moreno, 2003*) and serve as critical habitat to over 200 species of greatest conservation need along the Florida reef tract. Coral ecosystems also provide economic and recreational

services for coastal communities in over 100 countries (*Burke et al., 2011; Moberg & Folke, 1999*). The geologic framework of reefs serves as a natural barrier that protects shorelines and coastal communities by reducing impacts from waves, storm surges, and tsunamis for over 200 million people globally (*Ferrario et al., 2014; Sheppard et al., 2005*). However, coral reefs worldwide, and the important ecosystem services they provide, have experienced critical degradation and continue to decline due to a number of synergistic local and global stressors, including coral bleaching, disease, coastal development, overfishing, and nutrient enrichment (*Glynn, 1984; Precht et al., 2016; Vega Thurber et al., 2013; Weil & Rogers, 2011; Yates et al., 2017; Zaneveld et al., 2016*).

While the causes and trajectories of coral reef degradation have been documented for decades (*Baker, Glynn & Riegl, 2008; Bruckner & Hill, 2009; Gardner et al., 2003; Hughes, 1994; Pandolfi et al., 2003*), studies predict that coral reefs worldwide will continue to deteriorate, primarily due to thermal-driven coral bleaching plus ocean and coastal acidification (*Eakin et al., 2010; Frieler et al., 2013; Hoegh-Guldberg et al., 2007; Van Hooidek et al., 2014*). Ocean acidification results from increasing storage of atmospheric carbon dioxide in the surface ocean, lowering the aragonite saturation state and reducing seawater pH. Coastal acidification caused by eutrophication, coastal upwelling and freshwater inflow also reduces seawater pH and aragonite saturation state. Both of these processes can slow coral growth and contribute to chemical dissolution of reefs (*Comeau et al., 2014; Eyre et al., 2018*). Reefs in the Florida Keys are already being affected by coastal acidification, likely driven by nutrient inputs resulting in seasonal dissolution of carbonate sediments (*Muehllehner et al., 2016*) that may be accounting for approximately 15% of seafloor elevation loss in the Upper Florida Keys (*Yates et al., 2017*). Solar radiation and high water temperatures cause coral bleaching that has resulted in extensive coral mortality as well as predisposing the survivors to coral disease (*Miller et al., 2009; Muller et al., 2008; Rogers et al., 2009; Williams & Bunkley-Williams, 1990*). Coral diseases continue to emerge, including Stony Coral Tissue Loss Disease (SCTLD) which has severely impacted the Florida reef tract since 2014 and is now spreading to the wider Caribbean basin (*Precht et al., 2016; Walton, Hayes & Gilliam, 2018; Weil et al., 2019*).

This multifaceted assault on coral reefs has motivated searches for natural refugia where climate threats to corals are mitigated. Refugia have been defined as “habitats that components of biodiversity retreat to, persist in, and can potentially expand from under changing environmental conditions” (*Keppel et al., 2012*). The complex interplay among climate, oceanographic, and biological factors that influences susceptibility and resilience of reefs has made identification and characterization of such refugia for corals challenging. Conservation and management strategies include the establishment of marine protected areas with environmental conditions that promote coral resiliency. While efforts are being directed toward identifying reefs with low exposure to or potential for adaptation to climate threats, plus reduced local anthropogenic impacts (*Keller et al., 2009; Mumby & Steneck, 2008; Salm, Done & McLeod, 2006; West & Salm, 2003*), only one reef in the Florida Keys is considered a potential refuge from ocean acidification (*Manzello et al., 2012*).

While often found near coral reefs, mangrove systems are not usually thought of as suitable habitats for coral recruitment and growth because of high sedimentation rates, lack of suitable substratum, and inadequate water quality. Further, ecological surveys of Florida mangroves from the 1930s to 1980s made no mention of the presence of corals when detailing associated fauna (Davis, 1940; Odum, McIvor & Smith, 1982). However, a number of recent studies have identified several locations around the world with corals growing on or near mangrove prop roots (Bengtsson *et al.*, 2019; Camp *et al.*, 2019, 2017; Hernández-Fernández, 2015; Macintyre *et al.*, 2000; Rogers, 2009, 2017; Scavo Lord *et al.*, 2020). In some of these habitats, mangroves are sheltering corals even in the face of extreme variability in pH, dissolved oxygen, and temperature, resulting in lower incidences of bleaching and high rates of recovery (Camp *et al.*, 2019, 2017; Yates *et al.*, 2014). The mangrove-canopy shading reduces light stress and a combination of hydrodynamic and biogeochemical processes in some of these mangrove-coral habitats can locally buffer pH (Yates *et al.*, 2014).

The increasing number of global reports of mangrove-coral habitats and the lack of any information to date for Florida waters motivated us to survey approximately 76 km of mangrove shoreline in the Upper and Lower Keys to determine if these habitats were present. We used satellite imagery and benthic-habitat maps to identify areas that we hypothesized would best support mangrove-coral habitats. Here we describe the areas surveyed, the locations where mangrove-coral habitats were found, the coral species and abundance encountered, and water quality parameters measured at the sites. This was the first study to systematically search for and identify mangrove-coral habitats in the Florida Keys National Marine Sanctuary (FKNMS) and provide a basic environmental characterization of them.

## MATERIALS AND METHODS

### Site selection

The FKNMS covers approximately 9,900 km<sup>2</sup> of coastal and ocean waters, reaching from south Florida to the Dry Tortugas National Park. This includes the Florida Keys, the Florida reef tract, as well as extensive mangrove and seagrass habitats. Several areas in the Upper and Lower Florida Keys were identified as target areas based on previous unpublished observations by the authors, and/or anecdotal personal communication from other researchers that have worked in the Florida Keys, that corals had been previously observed in or near mangrove shorelines. Additional target areas were chosen by using satellite images from Google Earth Pro (Version 7.3; Google LLC, Mountain View, CA, USA) to identify mangrove shorelines that were adjacent to tidal channels with one or more of the following criteria: (i) deep enough to support corals at all stages of the tidal cycle, (ii) deep enough, or with visible evidence (e.g., tidal deltas present) to suggest strong current flow, (iii) clear water, (iv) a connection to the open ocean, and (v) areas where hard substrate was mapped adjacent to mangroves on the Florida Fish and Wildlife Conservation Commission (FWC)'s Unified Reef Map (<https://myfwc.com/research/gis/regional-projects/unified-reef-map/>). Some mangrove-lined channels that could not be easily observed via satellite were included for ground truthing. Heavily built areas

(e.g., Key Largo, Marathon, Key West) were avoided since they were likely to have fewer mangrove-lined shorelines and poorer water quality.

### Field surveys

Maps of target areas were used to guide visual surveys of mangrove shorelines and channels. Surveys were conducted between 08:00 and 17:00 for optimal lighting. Areas in the Upper Keys (Biscayne Bay/Card Sound/Largo Sound) were surveyed 4–8 October 2019 and areas in the Lower Keys (between Big Pine Key and Boca Chica Key) were surveyed 7–11 January 2020. Depending on accessibility, surveys for the presence of corals growing on mangrove prop roots or in channels shaded by the mangrove canopy were conducted by boating at very low speed, paddleboard, or snorkeling. Areas surveyed were recorded using a hand-held wide-area-augmentation-system (WAAS)-corrected global position system (GPS). When corals were located in mangrove habitats, each coral species was visually identified, and their corresponding abundances were manually counted and recorded. Representative photographs of the corals were taken. The following environmental parameters were measured using a hand-held multi-parameter water-quality sonde (YSI ProDSS; Xylem Inc., Yellow Springs, OH, USA): water temperature (degrees Celsius), salinity, dissolved oxygen (mg/L), turbidity (Formazin nephelometric units, FNU),  $\text{pH}_{\text{NBS}}$  (to estimate relative differences in pH between mangrove-coral and reference habitats), and pressure (dbar) to estimate water depth (meters).

### Area surveyed

Way points from the GPS were plotted daily after each survey in Google Earth Pro. The Google Earth KMZ file was then imported into ArcGIS Pro (Esri Inc., Redlands, CA, USA) to create maps with track lines to represent the surveyed areas. The length of the track lines was calculated by ArcGIS Pro based on the WGS84 Web Mercator (Auxiliary Sphere) projection used for the National Agriculture Imagery Program (NAIP) base map. The calculated length of the track lines was summed to obtain the estimated kilometers of mangrove shoreline surveyed.

### Statistical analysis

A two-sample t-test assuming unequal variances and two tails was used to determine the significance of differences between environmental parameters when comparing habitat types. The tests were conducted using Microsoft Excel (Microsoft Inc., Redmond, WA, USA). Influence of environmental parameters was further examined via principal component analysis (PCA) conducted using Primer 7 (Clarke, 1993; Clarke & Gorley, 2015).

## RESULTS

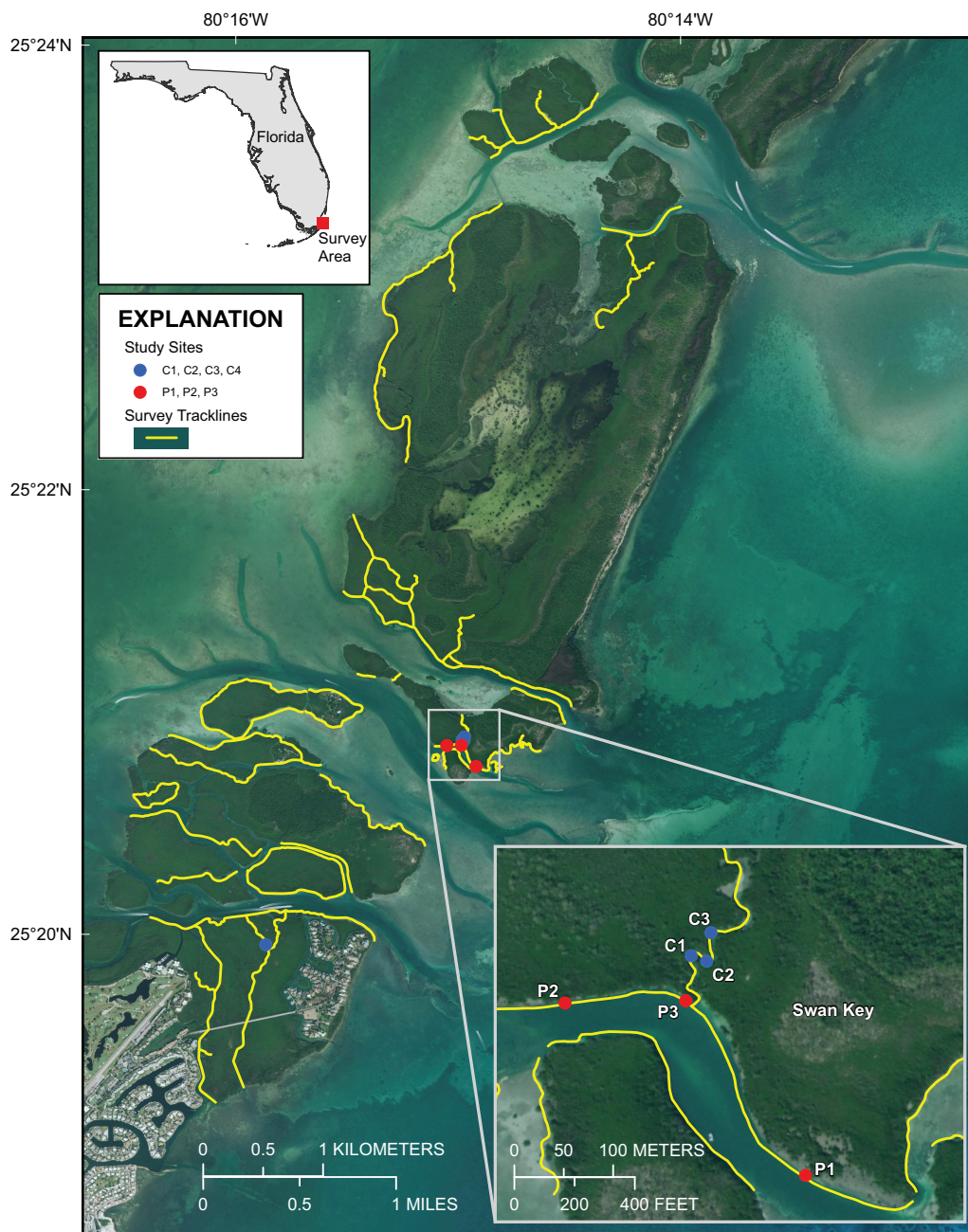
The total linear distance of mangrove shoreline that was surveyed during this project was approximately 76 km. The surveys identified two kinds of mangrove-coral habitats in the Florida Keys: (1) prop-root corals, where colonies were growing directly on

(and in close proximity to, defined as less than 0.5 m) mangrove prop roots, and (2) channel corals, where colonies were growing in tidal channels between mangrove shorelines, such that the corals were shaded during at least part of the day by the mangrove canopy, but not close to prop roots.

### Upper Keys surveys

Approximately 55 km of mangrove shoreline in the Upper Florida Keys, including parts of Card Sound and Largo Sound, were surveyed 4–8 October 2019 (Figs. 1 and 2). An additional mangrove-lined tidal channel (not shown in Fig. 1) was surveyed in North Key Largo from the southern end of Card Sound to an impassable bridge clearance beneath Card Sound Road. In this channel, the water was very turbid, appearing opaque dark brown in color, and no corals were observed there. Both prop-root and channel-coral habitats were observed in the Upper Keys and environmental data were collected at representative sites (Table 1). All sites with prop-root corals were found along the northern side of a deeply incised channel next to Swan Key (inset, Fig. 1) and featured two different morphotypes of *Porites porites* (also referred to as *P. divaricata* and *P. furcata*; Prada et al., 2014) and one encrusting *Siderastrea radians* colony (Table 1; Fig. 3). Prop-root corals in the Upper Keys ranged in size (longest nominal axis) from 2 to 20 cm. Channel coral habitat was found in mangrove-lined tidal channels cutting through the interior of islands (e.g., Swan Creek, inset, Fig. 1), and featured small colonies of *Siderastrea siderea*, *S. radians*, and *Stephanocoenia intersepta* (Table 1; Fig. 3). Clusters of small coral colonies were occasionally observed in some wider interior channels that were not being shaded by mangroves (Angelfish Key, Old Rhodes Key). Channel corals in the Upper Keys ranged in size (longest nominal axis) from 2 to 25 cm. All of the tidal channels surveyed around Largo Sound (Fig. 2) had discolored water with high turbidity and low visibility, and no corals were seen in spite of previously reported anecdotal sightings. A location in these channels was chosen to collect environmental data as a non-coral-habitat reference site for comparison (Table 1; Fig. 2).

Differences between Upper Keys channel-coral habitats and prop-root-coral habitats were tested based on the data in Table 1. There were no significant differences in temperature, pH, or turbidity between the two habitat types. However, there were significant differences in salinity (channel corals mean  $36.39 \pm 0.014$ ; prop-root corals mean  $36.84 \pm 0.002$ ;  $t_{\text{stat}} = -6.71$ , d.f. = 4,  $p = 0.003$ ) and dissolved oxygen (channel corals mean  $4.54 \pm 0.056$ ; prop-root corals mean  $5.71 \pm 0.117$ ;  $t_{\text{stat}} = -5.08$ , d.f. = 3,  $p = 0.015$ ). This may reflect the difference between the physical characteristics (depth, current velocity, and oceanic influence) on the channel with prop-root corals versus the tidal creek hosting corals mid-channel (Fig. 1). Because environmental data were only collected at one non-coral reference site (Fig. 2), it is not possible to test for significant differences between target and reference habitats; however, both dissolved oxygen concentrations and pH values were much lower at the Upper Keys reference site compared to both types of mangrove-coral habitats (Table 1).



Base from USGS, Esri, USDA Farm Service

**Figure 1** Upper Florida Keys surveys in the vicinity of Card Sound. Yellow lines indicate shoreline and channels surveyed. Red points labeled P1, P2, and P3 indicate prop-root-coral sites described in Table 1. Blue points labeled C1, C2, C3 and C4 indicate channel-coral sites described in Table 1. Map image is the intellectual property of Esri and is used herein under license. Copyright ©2019 Esri and its licensors. All rights reserved. [Full-size !\[\]\(46cd2931c16a18b659f03caeff1e3155\_img.jpg\) DOI: 10.7717/peerj.9776/fig-1](https://doi.org/10.7717/peerj.9776/fig-1)

### Lower Keys surveys

Approximately 21 km of linear mangrove shoreline was surveyed in the Lower Florida Keys between Big Pine Key and Boca Chica Key from 7 to 11 January 2020 (Fig. 4).



**Figure 2** Upper Florida Keys surveys around Largo Sound. Yellow lines indicate shoreline and channels surveyed. Purple point labeled NC indicates reference site sampled for environmental parameters described in Table 1. Map image is the intellectual property of Esri and is used herein under license. Copyright ©2019 Esri and its licensors. All rights reserved.

Full-size  DOI: [10.7717/peerj.9776/fig-2](https://doi.org/10.7717/peerj.9776/fig-2)

Both prop-root- and channel-coral habitats were observed in the Lower Keys and environmental data were collected at representative sites (Tables 2 and 3). Although surveys included mangrove shorelines on the ocean side islands and in the more protected

**Table 1** Mangrove-coral habitat data for Upper Florida Keys sites. Sites indicate locations of channel corals (C), prop-root corals (P) or no corals (NC) as depicted in Figs. 1 and 2. Brackets contain the number of coral colonies observed per species at a given site.

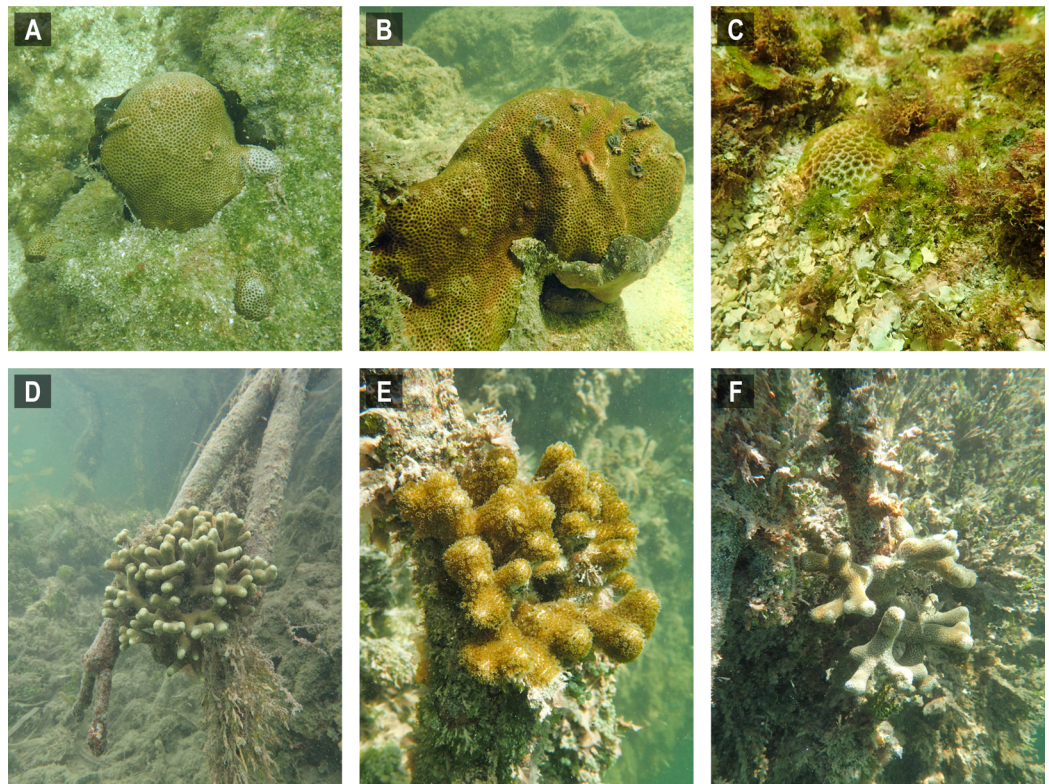
Date	Local time (EDT)	Site	Location	Habitat	Coral Sp.	Lat/Long	Temp (°C)	Salinity	DO (mg/L)	pH <sub>NBS</sub>	Turbidity (FNU)	Tidal state	Depth (m)
10/5/19	10:00	C1	Swan Creek	channel	<i>Siderastrea siderea</i> [3], <i>Siderastrea radians</i> [8], <i>Stephanoceonia intersepta</i> [1]	25.34798 -80.24977	27.8	36.32	4.47	7.93	-0.9	falling	1.2
10/5/19	10:15	C2	Swan Creek	channel	<i>S. siderea</i> [2], <i>S. radians</i> [2]	25.34793 -80.24963	28.0	36.33	4.65	7.93	-1.1	falling	1.4
10/5/19	10:25	C3	Swan Creek	channel	<i>S. radians</i> [1]	25.34819 -80.24959	28.0	36.34	4.80	7.91	-1.1	falling	1.37
10/5/19	12:30	C4	Angelfish Creek	channel	<i>S. radians</i> [56], <i>Solenastrea bournoni</i> [1]	25.3326 -80.2645	28.2	36.57	4.25	7.78	-0.3	rising	1.96
10/6/19	10:45	P1	Swan Key	prop root	<i>Porites porites</i> [1], <i>S. radians</i> [1]	25.34598 -80.24873	27.6	36.86	5.35	7.96	-0.8	falling	0.39
10/6/19	11:40	P2	Swan Key	prop root	<i>P. porites</i> [1]	25.34755 -80.25092	27.8	36.87	5.76	7.99	-0.9	falling	0.48
10/6/19	12:05	P3	Swan Key	prop root	<i>P. porites</i> [1]	25.34757 -80.24982	27.9	36.78	6.03	8.00	-1.0	falling, nearly slack	0.46
10/7/19	13:34	NC	Key Largo Negative control	channel	N/A	25.1584 -80.3783	27.5	36.77	2.27	7.24	-0.5	rising	0.95

**Note:** EDT, Eastern Daylight Time (GMT-4); Lat/Long, latitude and longitude in decimal degrees; DO, (optical) dissolved oxygen; FNU, Formazin Nephelometric Units; N/A, not applicable.

backcountry islands, all prop-root-coral sites were found in natural tidal channels or man-made canals connecting the Atlantic Ocean with Upper Sugarloaf Sound, with the exception of Park Channel, which connects Lower and Upper Sugarloaf Sounds (Fig. 4). The most common species observed growing on prop roots was again various morphs of *Porites porites*, dominated by *P. divaricata* (Table 2; Fig. 5). The highest diversity and largest abundance of individual colonies of prop-root and shaded corals (species: *P. porites*, *S. radians*, and *Favia fragum*) was found in an 1,840 m-long man-made canal dredged through Pleistocene bedrock (Miami Limestone formation) of Sugarloaf Key, connecting Upper Sugarloaf Sound and the Atlantic Ocean. This dredged canal runs parallel to Sugarloaf Boulevard and passes under the Loop Road Bridge. It is cataloged in the Monroe County Canal Management Master Plan as “430 Sugarloaf Key Merged Canal.” Channel corals, mainly *S. radians*, were observed in Tarpon Creek and throughout the length of 430 Sugarloaf Key Merged Canal (Table 2; Fig. 5). Prop-root corals in the Lower Keys ranged in size (longest nominal axis) from 5 to 25 cm and channel corals ranged between 1 and 35 cm in size.

Differences between Lower Keys channel-coral habitats and prop-root-coral habitats were tested based on the data in Table 2. The only environmental variable that was





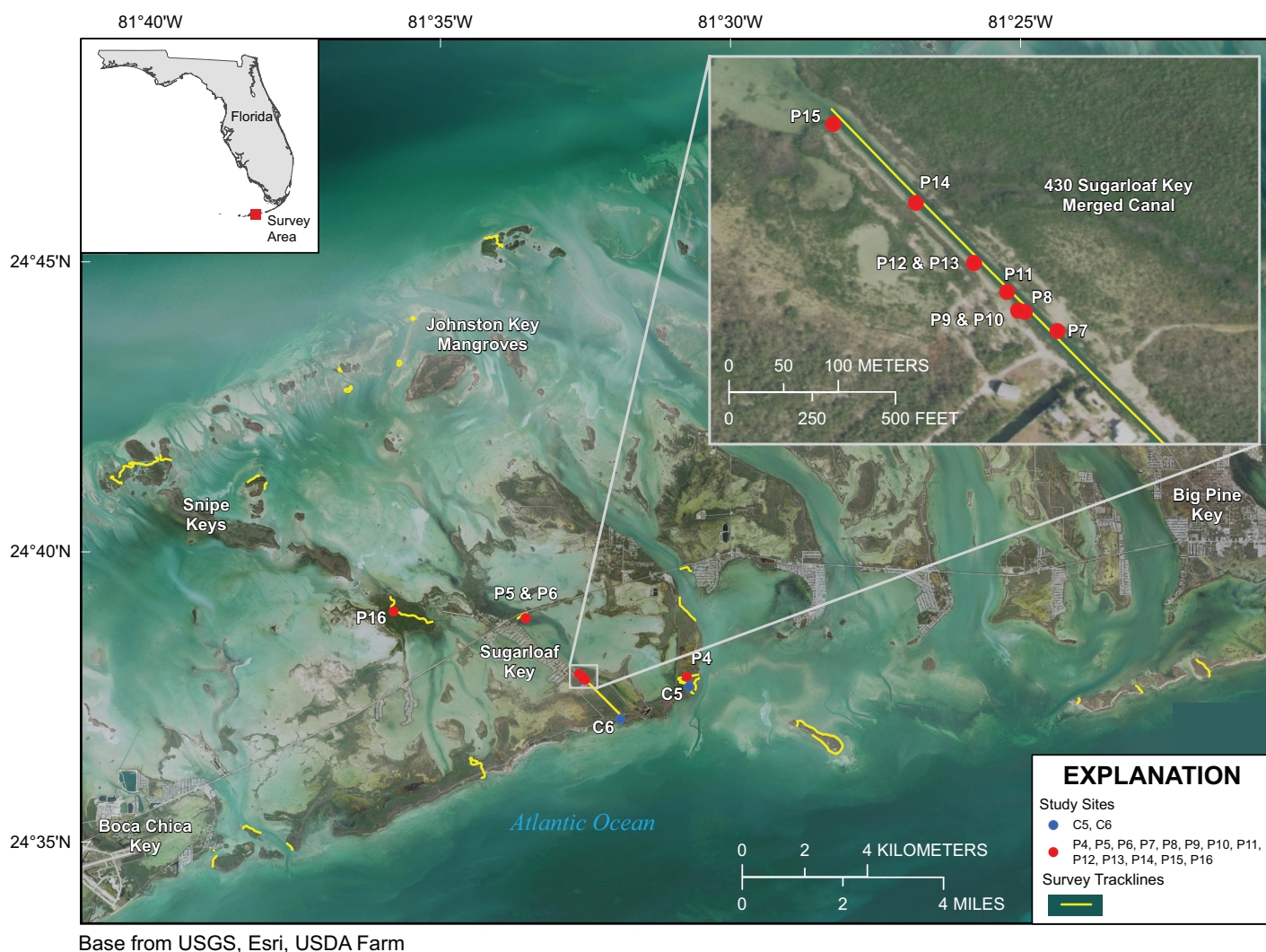
**Figure 3** Selected images of mangrove-coral habitats in the Upper Florida Keys. (A) *Siderastrea radians*, site C1. (B) *S. radians*, site C1. (C) *S. radians*, site C2. (D) *Porites porites*, site P1. (E) *P. porites*, site P2. (F) *P. porites*, site P3. [Full-size](#) DOI: 10.7717/peerj.9776/fig-3

significantly different was temperature and that can be attributed to the differences between days and sampling times, whereby more prop-root-coral sites were visited in the afternoon or were visited on 11 January, when surface-water temperatures were above 22 °C. Both prop-root- and channel-coral habitats in the Lower Keys occurred in inland tidal channels and canals, so it is not unexpected that major differences were not detected among measured environmental parameters at each type of site.

A two-sample *t*-test assuming unequal variances and two tails was performed in Microsoft Excel to test for differences between the prop-root-coral sites and reference sites based on data in Table 3 that were collected on the same day to minimize astochastic variability introduced by sampling at different times of day on multiple days. Reference sites were those with open water, mangrove-lined shorelines or confined tidal channels that did not serve as habitat for prop-root or channel corals. The only environmental parameter in the Lower Keys that was significantly different between prop-root-coral sites and reference sites was turbidity (Table 3; prop-root-coral sites mean  $1.1 \pm 0.115$ ; reference sites mean  $2.8 \pm 1.630$ ;  $t_{\text{stat}} = 3.16$ , d.f. = 6,  $p = 0.02$ ).

### Environmental parameters

Principal component analysis was used to visually summarize the data in Tables 1–3 (Fig. 6). The clear separation based on temperature between the Upper and Lower Keys



**Figure 4 Lower Florida Keys Surveys.** Yellow lines indicate shoreline and channels surveyed. Red points labeled P4–P16 indicate prop-root-coral sites described in Table 2. Blue points labeled C5 and C6 indicate channel-coral sites described in Table 2. Map image is the intellectual property of Esri and is used herein under license. Copyright ©2019 Esri and its licensors. All rights reserved. [Full-size](#) DOI: 10.7717/peerj.9776/fig-4

field efforts was due to the Upper Keys surveys being conducted in October (end of warm season) and the Lower Keys surveys being conducted in January (mid-cool season). Although there were significant differences in salinity and dissolved oxygen measured between channel-coral and prop-root coral communities in the Upper Keys, these differences are not as dramatic as the range of measurements obtained in the Lower Keys (where the only significant variable was turbidity).

## DISCUSSION

Our systematic surveys of 76 km of mangrove shorelines in the FKNMS revealed two types of low-diversity mangrove-coral habitats: (1) areas with coral colonies growing directly on and immediately adjacent to mangrove prop roots, and (2) narrow mangrove-lined tidal channels with coral colonies growing mid-channel, but still under the canopy's shade.

**Table 2 Mangrove-coral habitat data for Lower Florida Keys sites.** Sites indicate locations of channel corals (C) and prop-root corals (P) as depicted in Fig. 4. Shaded cells indicate revisits to a site at a different date/time. Brackets contain the number of coral colonies observed per species at a given site.

Date	Local time (EDT)	Site	Location	Habitat	Coral Sp.	Lat/Long	Temp (°C)	Salinity	DO (mg/L)	pH <sub>NBS</sub>	Turbidity (FNU)	Tidal state	Depth (m)
1/7/20	08:40	C5	Tarpon Creek	channel	<i>Siderastrea radians</i> [ >10]	24.628111 -81.51174	19.9	36.28	4.12	8.09	0.5	slack	0.25
1/7/20	16:45	P4	Tarpon Canal	prop root	<i>Porites porites</i> [1]	24.631081 -81.512361	22.0	36.34	9.20	8.41	1.9	rising	0.32
1/11/20	10:05	P4	Tarpon Canal	prop root	<i>P. porites</i> [1]	24.631081 -81.512361	22.8	36.66	5.00	8.07	1.3	rising	0.25
1/9/20	09:28	P5	Park Channel	prop root	<i>P. porites</i> [1]	24.647889 -81.558723	20.1	36.24	6.45	8.33	-0.7	falling	0.06
1/9/20	09:40	P6	Park Channel	prop root	<i>S. radians</i> [1]	24.647813 -81.558667	20.1	36.27	6.61	8.35	-0.8	falling	0.03
1/9/20	11:26	C6	430 Sugarloaf Key Merged Canal	channel	<i>S. radians</i> [7].	24.618799 -81.531484	20.1	36.39	6.62	8.4	0.2	falling	0.53
1/9/20	13:42	P7	430 Sugarloaf Key Merged Canal	prop root	<i>P. porites</i> [4], <i>S. radians</i> [4]	24.630163 -81.541481	21.5	36.37	8.43	8.70	0.3	falling, almost slack	0.08
1/11/20	11:46	P7	430 Sugarloaf Key Merged Canal	prop root	<i>P. porites</i> [4], <i>S. radians</i> [4]	24.630163 -81.541481	23.5	36.46	6.99	8.38	1.2	falling	0.15
1/11/20	14:03	P7	430 Sugarloaf Key Merged Canal	prop root	<i>P. porites</i> [4], <i>S. radians</i> [4]	24.630163 -81.541481	24.3	36.45	7.88	8.50	5.10	Falling	0.08
1/11/20	11:47	P8	430 Sugarloaf Key Merged Canal	prop root	<i>Favia fragum</i> [1]	24.630251 -81.541658	23.4	36.47	6.84	8.38	0.7	falling	0.049
1/9/20	13:00	P9	430 Sugarloaf Key Merged Canal	prop root	<i>P. porites</i> [1]	24.630322 -81.541749	ND	ND	ND	ND	ND	ND	ND
1/9/20	13:03	P10	430 Sugarloaf Key Merged Canal	prop root	<i>P. porites</i> [1]	24.630332 -81.541804	ND	ND	ND	ND	ND	ND	ND
1/9/20	13:10	P11	430 Sugarloaf Key Merged Canal	prop root	<i>P. porites</i> [1]	24.630486 -81.541895	ND	ND	ND	ND	ND	ND	ND
1/9/20	13:15	P12	430 Sugarloaf Key Merged Canal	prop root	<i>P. porites</i> [1]	24.630723 -81.542168	ND	ND	ND	ND	ND	ND	ND
1/9/20	13:20	P13	430 Sugarloaf Key Merged Canal	prop root	<i>P. porites</i> [1]	24.630775 -81.542177	ND	ND	ND	ND	ND	ND	ND
1/9/20	13:25	P14	430 Sugarloaf Key Merged Canal	prop root	<i>P. porites</i> [1]	24.631218 -81.542646	ND	ND	ND	ND	ND	ND	ND

(Continued)

Table 2 (continued)

Date	Local time (EDT)	Site	Location	Habitat	Coral Sp.	Lat/Long	Temp (°C)	Salinity	DO (mg/L)	pH <sub>NBS</sub>	Turbidity (FNU)	Tidal state	Depth (m)
1/9/20	13:30	P15	430 Sugarloaf Key Merged Canal	prop root	<i>P. porites</i> [1]	24.631868 -81.543327	ND	ND	ND	ND	ND	ND	ND
1/9/20	16:25	P16	Five Mile Creek	prop root	<i>P. porites</i> [1]	24.649801 -81.596691	20.7	36.24	7.62	8.60	-0.8	rising	0.15

**Note:**

EDT, Eastern Daylight Time (GMT-4); Lat/Long, latitude and longitude in decimal degrees; DO, (optical) dissolved oxygen; FNU, Formazin Nephelometric Units; ND, not determined.

The prop-root habitat was dominated by various morphs of *P. porites* (*P. furcata*, *P. divaricata*; Prada et al., 2014), but also included *S. radians* and *F. fragum*.

The channel-coral habitat was dominated by *S. radians* and *S. siderea*, although single colonies of *Solenastrea bournoni* and *Stephanocoenia intersepta* were observed.

Predictably, low turbidity was a consistent characteristic of these coral habitats. However, the ranges of other environmental parameters measured (temperature, salinity, dissolved oxygen and pH<sub>NBS</sub>) were dynamic and overlapped those of non-mangrove coral habitats such that specific indicators that define mangrove-coral habitats remain to be elucidated. In the Upper Keys, our hypothesis that prop-root habitat would involve a direct connection to ocean water proved to be valid. However, in the Lower Keys, we found prop-root corals in canals irrespective of direct ocean connections.

As in previous studies, it was fundamental to distinguish between mangrove-coral habitat types in this study: (A) corals growing directly on prop roots (Bengtsson et al., 2019; Hernández-Fernández, 2015; Scavo Lord et al., 2020; Yates et al., 2014), (B) corals growing on benthic substrates under the mangrove canopy (including what we refer to in this study as channel-coral habitats) (Rogers, 2017; Yates et al., 2014), and (C) corals growing in mangrove lagoons but not under the canopy (Camp et al., 2019, 2017). In our study, we found prop-root and channel-coral habitats to have different coral species composition and in the Upper Keys to have slight but significant differences in salinity and dissolved oxygen (Tables 1 and 2; Fig. 6).

The prop-root-coral habitats identified in the Florida Keys during this project were most similar to those recently described in Belize (Bengtsson et al., 2019; Scavo Lord et al., 2020) and Cuba (Hernández-Fernández, 2015). *Porites divaricata* is consistently the numerically dominant mangrove-coral observed in all three regions indicating this coral is particularly capable of adapting to mangrove environments (Bengtsson et al., 2019). Most of the Florida prop-root-coral sites were similar to the undercut peat bank described for Calabash Caye (Bengtsson et al., 2019), such that mainly *Porites porites* morphs (*P. divaricata* and *P. furcata*) were found growing on prop-roots (Figs. 3 and 5). However, unlike Calabash Caye (Scavo Lord et al., 2020), we did sometimes observe coral colonies attached on the bottom substrate of these mangrove channels. In cases where there was carbonate substratum, such as the bedrock walls of 430 Sugarloaf Key Merged Canal,

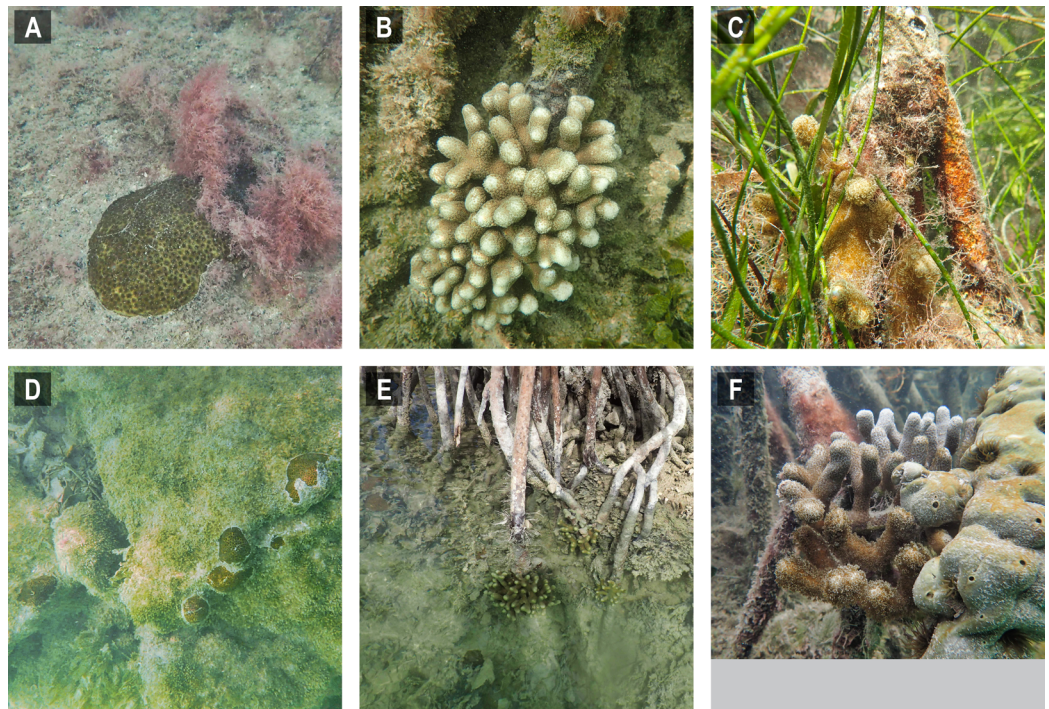
**Table 3** Comparison between environmental parameters in prop-root coral habitats and non-target habitats in the Lower Florida Keys. All data collected on January 11, 2020. Shading indicates prop-root coral habitats.

Local time (EDT)	Habitat	Description	Lat/Long	Temp (°C)	Salinity	DO (mg/L)	pH <sub>NBS</sub>	Turbidity (FNU)	Tidal state	Depth (m)	Notes
09:50	Coastal Atlantic	Oceanside, in boat channel outside of Tarpon Canal	24.6305 -81.5066	22.6	36.37	6.57	8.30	3.7	rising	0.20	Open water, no proximity to corals or mangroves
09:55	Mangrove canal	Oceanside entrance, Tarpon Canal	24.6316 -81.5091	22.8	36.52	6.40	8.24	4.4	rising	0.01	Mid-channel, mangroves line channel edges
10:05	Prop-root coral (P4)	Interior, Tarpon Canal	24.6311 -81.5124	22.8	36.66	5.00	8.07	1.3	rising	0.25	Single mature <i>Porites</i> colony growing on mangrove prop root, north side of canal
10:06	Canal-coral proximity	Interior, Tarpon Canal	24.6311 -81.5124	22.8	36.59	5.57	8.16	1.5	rising	0.22	Mid-channel reading parallel with site Prop-root coral site P4
10:16	Mangrove canal	Interior, Tarpon Canal	24.6307 -81.5146	23.0	36.70	5.44	8.10	1.5	rising	0.06	Against mangroves without corals, north side of canal almost opposite opening to Tarpon Creek
10:32	Inland waterway	Upper Sugarloaf Sound	24.6382 -81.5276	23.1	36.42	6.91	8.48	3.0	slack	0.88	Open water, mid-basin, no proximity to corals or mangroves
11:44	Channel coral & prop-root coral area	430 Sugarloaf Key Merged Canal	24.6302 -81.5415	23.5	36.42	7.10	8.38	0.8	falling	0.089	Mid-channel reading parallel with prop-root coral site P7
11:46	Prop-root coral (P7)	430 Sugarloaf Key Merged Canal	24.6302 -81.5415	23.5	36.46	6.99	8.38	1.2	falling	0.15	Multiple <i>Porites</i> colonies growing on mangrove prop roots of same plant, east side of canal
11:47	Prop-root coral (P8)	430 Sugarloaf Key Merged Canal	24.6303 -81.5417	23.4	36.47	6.84	8.38	0.7	falling	0.049	Small colony of <i>Favia</i> growing on mangrove prop root, west side of canal
11:53	Mangrove canal	430 Sugarloaf Key Merged Canal	24.6320 -81.5433	23.8	36.39	7.48	8.43	1.1	falling	0.024	Mid-channel, near marker pole at Sugarloaf Sound entrance to canal
14:52	Channel coral area	430 Sugarloaf Key Merged Canal	24.6205 -81.5319	24.3	36.43	7.69	8.67	3.20	falling	0.08	Mid-channel, thick mangroves along sides, channel corals on rock walls but no prop-root corals

**Note:**

EDT, Eastern Daylight Time (GMT-4); Lat/Long, latitude and longitude in decimal degrees; DO, (optical) dissolved oxygen; FNU, Formazin Nephelometric Units.

we observed *F. fragum* and *S. radians* in addition to *Porites porites* morphs. Both these species were also found in Cuban mangrove-coral habitat (*Hernández-Fernández, 2015*) and *F. fragum* was found at the Crooked Creek site in Belize (*Bengtsson et al., 2019*). Crooked Creek also had species overlap with our channel-coral habitat observations, containing *S. siderea* and *Stephanocoenia* sp. (*Bengtsson et al., 2019*). The combination of

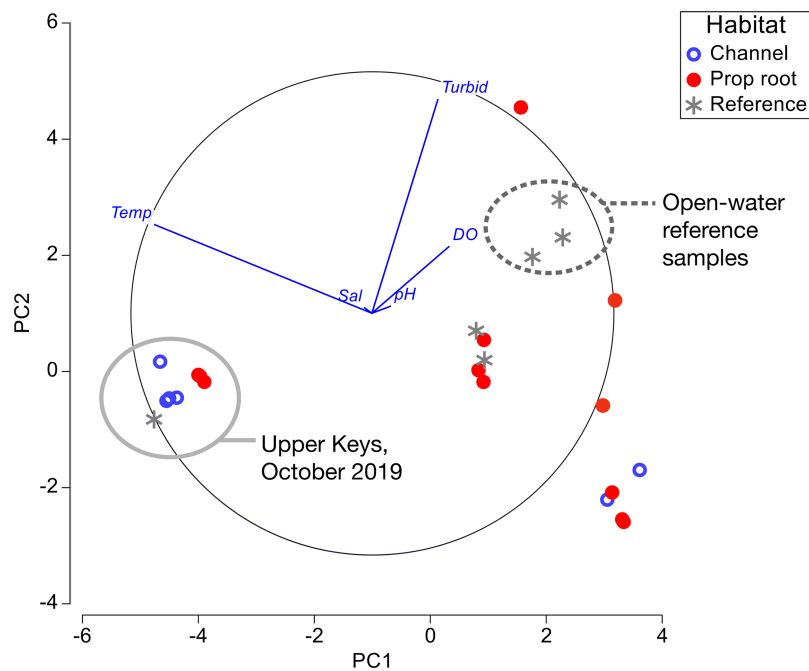


**Figure 5** Selected images of mangrove-coral habitats in the Lower Florida Keys. (A) *Siderastrea radians*, site C5. (B) *Porites porites*, site P4, (C) *P. porites*, site P5. (D) *S. radians*, site C6. (E) *P. porites*, site P7. (F) *P. porites*, site P16.

Full-size  DOI: [10.7717/peerj.9776/fig-5](https://doi.org/10.7717/peerj.9776/fig-5)

mangrove prop-roots and hardbottom appears to increase the coral species diversity of mangrove-coral habitats. It was noted in Cuba that 100% of the corals were associated with crustose coralline algae on prop roots ([Hernández-Fernández, 2015](#)), but we did not observe that association in the Florida Keys. In general, the Keys habitats hosted lower diversity of corals and were dominated by stress-resilient species, primarily *P. porites* and *S. radians* ([Lirman, Manzello & Maciá, 2002](#)). However, we did document the presence of other coral species, more commonly in the channel-coral habitats than the prop-root-coral habitats ([Tables 1 and 2](#)): *Favia fragum*, *S. siderea*, *So. bournoni*, *St. intersepta*.

As noted by [Bengtsson et al. \(2019\)](#), “With existing data we cannot ascertain definitively why some mangrove sites have high coral diversity, some sites have low coral diversity, and some sites are lacking corals entirely.” Indeed, only the Virgin Islands and southern hemisphere sites have been characterized beyond single-point sampling of environmental parameters ([Camp et al., 2019, 2017](#); [Yates et al., 2014](#)). Our environmental measurements ([Tables 1–3](#); [Fig. 6](#)) fall within the normal mean ranges measured on Florida Keys inshore and offshore reefs in recent decades: temperatures were compared against the multi-decadal data available from National Oceanic and Atmospheric Administration (NOAA)’s National Data Buoy Center ([www.ndbc.noaa.gov](http://www.ndbc.noaa.gov)); salinity and dissolved oxygen were compared against water quality data from the Florida Keys National Marine Sanctuary ([Briceño & Boyer, 2015](#)). The pH values we measured are relative and therefore could not be compared accurately to absolute data. In the Lower Keys, open-water reference samples (i.e., those collected offshore in Atlantic waters, in Sugarloaf Sound, or at



**Figure 6** Principal component analysis of environmental factors. Data from channel-coral habitats are shown in blue open circles, from prop-root-habitat in closed red circles, and from reference (non-coral) sites with gray asterisks. All of the data from the Upper Keys field surveys in October 2019 are indicated by the gray circle. Open-water reference samples, that is, Atlantic, Sugarloaf Sound, or the ocean-side entrance to a mangrove channel, are indicated by the dashed circle.

Full-size DOI: 10.7717/peerj.9776/fig-6

the ocean-side entrance of a canal) were visibly different from the mangrove-coral habitats; however, reference measurements collected in mangrove-lined canals lacking corals were not distinct from the mangrove-coral habitats (Fig. 6). The amount of variability in environmental parameters documented during the Lower Keys surveys and the lack of differentiation between the mangrove-lined canal sites with and without corals indicates that the parameters most critical to defining these mangrove-coral habitats remain to be determined. However, as suggested by *Bengtsson et al. (2019)*, water flow likely plays a key role.

The prop-root corals in the Upper Keys occurred where we hypothesized, on the edges of deep channels with fast-moving currents that were directly connected to open-ocean water (Fig. 1). However, in the Lower Keys, all the mangrove-coral habitats were observed in protected internal/inland water bodies (Fig. 4) rather than on mangrove islands closer to oceanic water (i.e., along the Atlantic-facing side of offshore islands or along the Gulf of Mexico coast of the backcountry islands). In fact, the most heavily populated area of mangrove-coral habitat (both prop-root and channel corals) surveyed was in the 430 Sugarloaf Key Merged Canal (inset, Fig. 4). Using spatio-temporal modeling, a recent paper determined that SCTLD appears to move via bottom currents and sediment (*Muller et al., 2020*), so the disease may not easily transmit into channels and canals where corals are growing, affording them some protection. Further, Bayesian

models suggested that corals on high-diversity reefs and on deep reefs were at greater risk of SCTLD than corals on shallow and low-diversity reefs (Muller *et al.*, 2020). Combined, these modeling results indicate that these inland tidal channels and man-made canals may benefit from physical/hydrographic impediments to the movement of the coral disease. It is worth noting that the colony sizes observed growing on prop-roots (Figs. 3 and 5) indicate that these corals were present prior to the stony coral tissue loss disease outbreak moving through these parts of the Florida reef tract in 2016–2018. However, the main corals observed growing on prop roots were *P. porites*, a species which is less susceptible to SCTLD and has been shown by Florida Keys coral surveys to be increasing in abundance in spite of the outbreak (Muller *et al.*, 2020; Walton, Hayes & Gilliam, 2018).

The full extent of benefits that may be derived by corals in mangrove habitats remains to be determined. The experimentally proven advantages in the Virgin Islands included carbonate system buffering and reduction of oxidative stress via shading (Yates *et al.*, 2014). Other observed benefits include lower incidence of bleaching and/or more rapid recovery from bleaching (Camp *et al.*, 2017; Yates *et al.*, 2014). Given that bleaching has been linked to increased subsequent mortality by disease (Miller *et al.*, 2009; Rogers *et al.*, 2009), these mangrove-coral habitats may also provide indirect protection against coral disease. In the Lower Keys, we detected a significant difference in turbidity between coral and reference habitats. High turbidity in mangrove-adjacent waters is typically caused by the high input of dissolved and particulate organic matter derived from the direct productivity of the mangrove forest (Alongi, 2014). Some components of dissolved organic matter can function as antioxidants and this activity has been documented to be particularly high in Florida mangrove environments, likely due to their release of polyphenols and tannins, which are known antioxidants (Romera-Castillo & Jaffé, 2015). This may be an added benefit provided to corals by mangroves in addition to the physical shading. In the Lower Keys, the majority of prop-root corals were found on the western side of the canals, which was shaded from the afternoon sun by the mangrove canopy. The Tarpon Canal coral (P4) and the three prop-root corals in the Upper Keys (P1–P3) were all on the north side of channels. Calabash Caye, Belize also had higher numbers of prop-root-coral colonies on the northern side of the primary channel site (Scavo Lord *et al.*, 2020). In 430 Sugarloaf Key Merged Canal we found corals growing on prop roots on both the eastern (P7) and western (P8–P15) sides of the channel. However, the corals growing on the very shallow substrate directly adjacent to mangroves in 430 Sugarloaf Key Merged Canal were found primarily on the western side of the channel where they were shaded from afternoon sun.

Unlike other locations where mangrove-coral habitats have been identified, the Florida Keys episodically experience cold fronts that can push water temperatures below the 16–18 °C lower limit of tropical scleractinian tolerance for several days causing mass coral mortality, as occurred in 1977 and 2010 (Lirman *et al.*, 2011; Roberts *et al.*, 1982). We hypothesize that for cold or cool weather pulses of lesser duration, mangrove-coral habitats may be somewhat thermally buffered by the microclimate effect of the mangrove canopy and the retention of heat by peat and porewaters (Osland *et al.*, 2019).



Observational evidence from the Lower Keys surveys suggested that there could have been mangrove-coral habitats with higher coral diversity on some of the more open-water shorelines but that they were destroyed, possibly during the passage of Hurricane Irma, which made direct landfall as a category 4 storm on Cudjoe Key in September 2017. Coral rubble from multiple species was observed in uncompacted sediment layers among mangrove prop roots at both oceanside (east of Cook Island) and backcountry (Johnston Key mangroves) sites. It is possible that the coral rubble was transported to these sites by the storm. However, dead coral nubbins that remained attached to the substrata could be felt beneath the sediment layer along the mangrove fringe at the Cook Island site. In the backcountry, there were several sites along the Gulf of Mexico-facing shore where the mangrove prop roots had been scoured clean (e.g., Johnston Key Mangroves and Sawyer Key). Sawyer Key had up to 1-m thick wrackline of seagrass and sponges along the shore and the Snipe Keys had a layer of storm mud in the mangroves. Although the hardbottom extended all the way to the mangrove shoreline in many of these areas, there was a layer of unconsolidated sediment 5–15 cm thick covering it, impeding coral survival close to the mangroves. These observations are consistent with reports of storm damage in the mangroves after Hurricane Irma. [Radabaugh et al. \(2019\)](#) reported widespread mortality in Lower Keys mangroves and sedimentary storm-surge deposits ranging from 1 to 7 cm thick. Additionally, severe shoreline erosion occurred in several locations and seagrass wrack along some mangrove shorelines was 5–15 cm thick in the months immediately after the storm (R. Moyer, 2017, personal observation). These open-water shorelines appear to be prime potential coral habitat (clear, oceanic water combined with hardbottom and mangrove-lined shoreline). From the observed coral rubble, scrubbed prop roots, and unconsolidated sediment layer, we infer that there may have been prop-root- or channel-coral habitat in these areas, but that Hurricane Irma destroyed them. This type of destruction in the highly diverse mangrove-coral habitat in the U.S. Virgin Islands was documented in the wake of Hurricanes Irma and Maria in 2017 ([Rogers, 2019](#)). This suggests that these areas may be worth reassessing in 3–5 years to see if new diverse coral communities become established as the mangrove habitats continue to recover.

Could these mangrove-coral habitats be functioning as refugia? We suggest the possibility exists for these environments to be (i) thermal refugia (via microclimate insulation against cold and shading against heat), (ii) acidification refugia (via buffering pH), (iii) oxidative stress refugia (via shading and mangrove antioxidants), (iv) disease refugia (via hydrographic transmission limitation of the channels), (v) storm refugia (inland tidal creeks and channels may be more protected from heavy wave action and sedimentation), or (vi) various combinations thereof. Additional examination is required to determine whether these Florida Keys mangrove-coral habitats could offer specific protection for corals. If so, these habitats may serve as temporary or longer-term nurseries to support growth and acclimation of coral outplants or natural laboratories to test survival of different coral genotypes.

Due to time, weather, and funding limitations, our surveys did not include all possible mangrove shoreline targets in the Florida Keys, so additional locations with mangrove-coral

habitats are likely yet to be identified. There are over 1,400 linear km of mangrove shoreline in the Lower Keys alone (estimated from <http://geodata.myfwc.com/datasets/es-shoreline-classification-lines-florida>). While the survey approach employed in this study used informed decisions to target those areas with the highest probability of hosting mangrove-coral habitats, some areas that were missed by this initial effort may host even higher coral diversity than the ones documented here. As noted in Belize, in addition to a *Porites*-monoculture prop-root habitat observed on Calabash Caye, nearby Crooked Creek on the western edge of Turneffe Atoll was found to host 8 genera of stony corals (Bengtsson et al., 2019). Over 30 species of scleractinian corals have been described in mangrove habitats of the U.S. Virgin Islands, demonstrating that mangroves can host a high-diversity assemblage of corals if the environmental conditions are favorable (Rogers, 2017).

## CONCLUSIONS

This study was the first effort to locate and characterize mangrove-coral habitats in the Florida Keys. We documented areas where corals were growing directly on and under mangrove prop roots (prop-root-coral habitats) and where they were growing under the shade of the mangrove canopy (channel-coral habitats). Areas with corals growing on prop roots were characterized by roots hanging into undercut channels and/or with strong tidal currents and often connections to adjacent open-ocean waters. Coral species found growing on and directly adjacent to prop roots included *P. porites* (multiple morphs, also known as *P. furcata* and *P. divaricata*), *S. radians* and *F. fragum*. Channel-coral habitats predominantly hosted *S. radians*, although single colonies of *Solenastrea bournoni* and *Stephanocoenia intersepta* and several *S. siderastrea* were observed. There is circumstantial evidence that suggests additional mangrove-coral habitats existed on oceanside and backcountry islands but were destroyed by Hurricane Irma. These mangrove-coral habitats may be refugia for corals threatened by climate change and disease outbreaks. Further evaluation is needed to determine if these habitats could contribute to coral restoration efforts; for example, as locations to support the growth and acclimation of coral outplants in areas that may be at lower risk of coral bleaching, disease, or storm damage.

## ACKNOWLEDGEMENTS

The authors thank J. Voelschow for assisting with data formatting, B. Williams for converting KMZ files to ArcGIS maps and estimating the area surveyed via track lines, and B. Boynton for layout of photo plates. We are grateful to A. Franklin for geospatial technology support. We appreciated consultation with E. Weil about the different *Porites* morphs. Any use of trade, firm, or product names is for descriptive purposes only and does not imply endorsement by the U.S. Government or the State of Florida.

## ADDITIONAL INFORMATION AND DECLARATIONS

### Funding

This research project was funded by a grant awarded from Mote Marine Laboratory's Protect Our Reefs Grants Program, which is funded by proceeds from the sale of the

Protect Our Reefs specialty license plate. Christina Kellogg and Kimberly Yates were supported by the U.S. Geological Survey (USGS) Coastal-Marine Hazards and Resources Program of the Hazards Mission Area and Ryan Moyer and Mary Jacobsen were supported by the Ecosystem Assessment and Restoration section of the Florida Fish and Wildlife Conservation Commission's Fish and Wildlife Research Institute. There was no additional external funding received for this study. The funders had no role in study design, data collection and analysis, decision to publish, or preparation of the manuscript.

### **Grant Disclosures**

The following grant information was disclosed by the authors:

Mote Marine Laboratory's Protect Our Reefs Grants Program.

U.S. Geological Survey (USGS) Coastal-Marine Hazards and Resources Program.

Florida Fish and Wildlife Conservation Commission's Fish and Wildlife Research Institute.

### **Competing Interests**

The authors declare that they have no competing interests.

### **Author Contributions**

- Christina A. Kellogg conceived and designed the experiments, performed the experiments, analyzed the data, prepared figures and/or tables, authored or reviewed drafts of the paper, and approved the final draft.
- Ryan P. Moyer conceived and designed the experiments, performed the experiments, analyzed the data, authored or reviewed drafts of the paper, and approved the final draft.
- Mary Jacobsen performed the experiments, prepared figures and/or tables, and approved the final draft.
- Kimberly Yates conceived and designed the experiments, analyzed the data, authored or reviewed drafts of the paper, and approved the final draft.

### **Field Study Permissions**

The following information was supplied relating to field study approvals (i.e., approving body and any reference numbers):

No permits were required to conduct this work since no instruments were put in contact with the benthos and no physical samples were collected. However, both the Florida Keys National Marine Sanctuary and the U.S. Fish and Wildlife Service Florida Keys National Wildlife Refuge Complex were contacted in advance and confirmed clearance to conduct the work in any waters under their respective jurisdictions.

### **Data Availability**

The following information was supplied regarding data availability:

All data are available in [Tables 1–3](#).

## REFERENCES

- Alongi DM. 2014.** Carbon cycling and storage in mangrove forests. *Annual Review of Marine Science* 6(1):195–219 DOI 10.1146/annurev-marine-010213-135020.
- Baker AC, Glynn PW, Riegl B. 2008.** Climate change and coral reef bleaching: an ecological assessment of long-term impacts, recovery trends and future outlook. *Estuarine Coastal and Shelf Science* 80(4):435–471 DOI 10.1016/j.ecss.2008.09.003.
- Bengtsson ZA, Kuhn KM, Battaglino AT, Li AS, Talbot MN, Wafapoor M, Atta CJ, Kowalski MB, Margolis SP, Rar E, Burmester EM, Lesneski KC, Scavo Lord K, Kaufman L, Stewart NL, Finnerty JR. 2019.** *Porites divaricata* is a locally abundant component of the epibiont community on mangrove prop roots at Calabash Caye, Turneffe Atoll, Belize. *Caribbean Naturalist* 2019:1–16.
- Briceño HO, Boyer JN. 2015.** 2014 Annual report of the Water Quality Monitoring Project for the Water Quality Protection Program of the Florida Keys National Marine Sanctuary. Technical Report #726T, Southeast Environmental Research Center, Florida International University. Available at [http://ocean.floridamarine.org/FKNMS\\_WQPP/docs/wqmp/reports/2014\\_WQMP\\_Annual\\_Report.pdf](http://ocean.floridamarine.org/FKNMS_WQPP/docs/wqmp/reports/2014_WQMP_Annual_Report.pdf).
- Bruckner AW, Hill RL. 2009.** Ten years of change to coral communities off Mona and Desecheo Islands, Puerto Rico, from disease and bleaching. *Diseases of Aquatic Organisms* 87:19–31 DOI 10.3354/dao02120.
- Burke L, Reytar K, Spalding M, Perry A. 2011.** *Reefs at risk*. Washington, D.C.: World Resources Institute.
- Camp EF, Edmondson J, Doheny A, Rumney J, Grima AJ, Huete A, Suggett DJ. 2019.** Mangrove lagoons of the Great Barrier Reef support coral populations persisting under extreme environmental conditions. *Marine Ecology Progress Series* 625:1–14 DOI 10.3354/meps13073.
- Camp EF, Nitschke MR, Rodolfo-Metalpa R, Houlbrèque F, Gardner SG, Smith DJ, Zampighi M, Suggett DJ. 2017.** Reef-building corals thrive within hot-acidified and deoxygenated waters. *Scientific Reports* 7(1):2434 DOI 10.1038/s41598-017-02383-y.
- Clarke KR. 1993.** Non-parametric multivariate analyses of changes in community structure. *Australian Journal of Ecology* 18(1):117–143 DOI 10.1111/j.1442-9993.1993.tb00438.x.
- Clarke KR, Gorley RN. 2015.** *PRIMER v7: user manual/tutorial*. Plymouth: PRIMER-E, 296.
- Comeau S, Edmunds PJ, Spindel NB, Carpenter RC. 2014.** Fast coral reef calcifiers are more sensitive to ocean acidification in short-term laboratory incubations. *Limnology and Oceanography* 59(3):1081–1091 DOI 10.4319/lo.2014.59.3.1081.
- Davis JH Jr. 1940.** *The ecology and geologic role of mangroves in Florida. Papers from Tortugas Laboratory*. Washington, D.C.: Carnegie Institution of Washington, 303–412.
- Eakin CM, Morgan JA, Heron SF, Smith TB, Liu G, Alvarez-Filip L, Baca B, Bartels E, Bastidas C, Bouchon C, Brandt M, Bruckner AW, Bunkley-Williams L, Cameron A, Causey BD, Chiappone M, Christensen TRL, Crabbe MJC, Day O, De la Guardia E, Díaz-Pulido G, DiResta D, Gil-Agudelo DL, Gilliam DS, Ginsburg RN, Gore S, Guzmán HM, Hendee JC, Hernández-Delgado EA, Husain E, Jeffrey CFG, Jones RJ, Jordán-Dahlgren E, Kaufman LS, Kline DI, Kramer PA, Lang JC, Lirman D, Mallela J, Manfrino C, Maréchal J-P, Marks K, Mihaly J, Miller WJ, Mueller EM, Muller EM, Orozco Toro CA, Oxenford HA, Ponce-Taylor D, Quinn N, Ritchie KB, Rodríguez S, Ramírez AR, Romano S, Samhuri JF, Sánchez JA, Schmahl GP, Shank BV, Skirving WJ, Steiner SCC, Villamizar E, Walsh SM, Walter C, Weil E, Williams EH, Roberson KW, Yusuf Y. 2010.** Caribbean corals in crisis: record thermal stress, bleaching, and mortality in 2005. *PLOS ONE* 5(11):e13969 DOI 10.1371/journal.pone.0013969.

- Eyre BD, Cyronak T, Drupp P, De Carlo EH, Sachs JP, Andersson AJ. 2018. Coral reefs will transition to net dissolving before end of century. *Science* 359(6378):908–911 DOI 10.1126/science.aao1118.
- Ferrario F, Beck MW, Storlazzi CD, Micheli F, Shepard CC, Airoidi L. 2014. The effectiveness of coral reefs for coastal hazard risk reduction and adaptation. *Nature Communications* 5(1):3794 DOI 10.1038/ncomms4794.
- Frieler K, Meinshausen M, Golly A, Mengel M, Lebek K, Donner SD, Hoegh-Guldberg O. 2013. Limiting global warming to 2 °C is unlikely to save most coral reefs. *Nature Climate Change* 3(2):165–170 DOI 10.1038/nclimate1674.
- García SM, De Leiva Moreno I. 2003. Global overview of marine fisheries. In: Sinclair M, Valdimarsson G, eds. *Responsible Fisheries in the Marine Ecosystem*. Rome and Wallingford: FAO and CAB International Publishing, 103–123.
- Gardner TA, Côte IM, Gill JA, Grant A, Watkinson AR. 2003. Long-term region-wide declines in Caribbean corals. *Science* 301(5635):958–960 DOI 10.1126/science.1086050.
- Glynn PW. 1984. Widespread coral mortality and the 1982–83 El Niño warming event. *Environmental Conservation* 11(2):133–146 DOI 10.1017/S0376892900013825.
- Hernández-Fernández L. 2015. Stony corals on submerged mangrove roots of *Rhizophora mangle* L. in Jardines de la Reina National Park. *Cuba Revista Investigaciones Marinas* 35:17–21.
- Hoegh-Guldberg O, Mumby PJ, Hooten AJ, Steneck RS, Greenfield P, Gomez E, Harvell CD, Sale PF, Edwards AJ, Caldeira K, Knowlton N, Eakin CM, Iglesias-Prieto R, Muthiga N, Bradbury RH, Dubi A, Hatziolos ME. 2007. Coral reefs under rapid climate change and ocean acidification. *Science* 318(5857):1737–1742 DOI 10.1126/science.1152509.
- Hughes TP. 1994. Catastrophes, phase-shifts and large-scale degradation of a Caribbean coral reef. *Science* 265(5178):1547–1551 DOI 10.1126/science.265.5178.1547.
- Keller BD, Gleason DF, McLeod E, Woodley CM, Airamé S, Causey BD, Friedlander AM, Grober-Dunsmore R, Johnson JE, Miller SL, Steneck RS. 2009. Climate change, coral reef ecosystems, and management options for marine protected areas. *Environmental Management* 44(6):1069–1088 DOI 10.1007/s00267-009-9346-0.
- Keppel G, Van Niel KP, Wardell-Johnson GW, Yates CJ, Byrne M, Mucina L, Schut AGT, Hopper SD, Franklin SE. 2012. Refugia: identifying and understanding safe havens for biodiversity under climate change. *Global Ecology and Biogeography* 21(4):393–404 DOI 10.1111/j.1466-8238.2011.00686.x.
- Lirman D, Manzello D, Maciá S. 2002. Back from the dead: the resilience of *Siderastrea radians* to severe stress. *Coral Reefs* 21(3):291–292 DOI 10.1007/s00338-002-0244-7.
- Lirman D, Schopmeyer S, Manzello D, Gramer LJ, Precht WF, Muller-Karger F, Banks K, Barnes B, Bartels E, Bourque A, Byrne J, Donahue S, Duquesnel J, Fisher L, Gilliam D, Hendee J, Johnson M, Maxwell K, McDevitt E, Monty J, Rueda D, Ruzicka R, Thanner S. 2011. Severe 2010 cold-water event caused unprecedented mortality to corals of the Florida Reef Tract and reversed previous survivorship patterns. *PLOS ONE* 6(8):e23047 DOI 10.1371/journal.pone.0023047.
- Macintyre IG, Goodbody I, Rützler K, Littler DS, Littler MM. 2000. A general biological and geological survey of the rims of ponds in the major mangrove islands of the Pelican Cays. *Belize Atoll Research Bulletin* 467:13–44.
- Manzello DP, Enochs IC, Melo N, Gledhill DK, Johns EM. 2012. Ocean acidification refugia of the Florida Reef Tract. *PLOS ONE* 7(7):e41715 DOI 10.1371/journal.pone.0041715.

- Miller J, Muller E, Rogers C, Waara R, Atkinson A, Whelan KRT, Patterson M, Witcher B. 2009. Coral disease following massive bleaching in 2005 causes 60% decline in coral cover on reefs in the US Virgin Islands. *Coral Reefs* 28:925 DOI 10.1007/s00338-009-0531-7.
- Moberg F, Folke C. 1999. Ecological goods and services of coral reef ecosystems. *Ecological Economics* 29(2):215–233 DOI 10.1016/S0921-8009(99)00009-9.
- Muehllehner N, Langdon C, Venti A, Kadko D. 2016. Dynamics of carbonate chemistry, production, and calcification of the Florida Reef Tract (2009–2010): evidence for seasonal dissolution. *Global Biogeochemical Cycles* 30(5):661–688 DOI 10.1002/2015GB005327.
- Muller EM, Rogers CS, Spitzack AS, Van Woesik R. 2008. Bleaching increases likelihood of disease on *Acropora palmata* (Lamarck) in Hawksnest Bay, St. John, US Virgin Islands. *Coral Reefs* 27:191–195 DOI 10.1007/s00338-007-0310-2.
- Muller EM, Sartor C, Alcaraz NI, Van Woesik R. 2020. Spatial epidemiology of the stony-coral-tissue-loss disease in Florida. *Frontiers in Marine Science* 7:163 DOI 10.3389/fmars.2020.00163.
- Mumby PJ, Steneck RS. 2008. Coral reef management and conservation in light of rapidly evolving ecological paradigms. *Trends in Ecology and Evolution* 23(10):555–563 DOI 10.1016/j.tree.2008.06.011.
- Odum WE, McIvor CC, Smith TJ III. 1982. *The ecology of the mangroves of South Florida: a community profile*. Washington, D.C.: U.S. Fish and Wildlife Service, Office of Biological Services, 144.
- Osland MJ, Hartmann AM, Day RH, Ross MS, Hall CT, Feher LC, Vervaeke WC. 2019. Microclimate influences mangrove freeze damage: implications for range expansion in response to changing macroclimate. *Estuaries and Coasts* 42(4):1084–1096 DOI 10.1007/s12237-019-00533-1.
- Pandolfi JM, Bradbury RH, Sala E, Hughes TP, Bjorndal KA, Cooke RG, McArdle D, McClenachan L, Newman MJH, Paredes G, Warner RR, Jackson JBC. 2003. Global trajectories of the long-term decline of coral reef ecosystems. *Science* 301(5635):955–958 DOI 10.1126/science.1085706.
- Prada C, DeBiase MB, Neigel JE, Yednock B, Stake JL, Forsman ZH, Baums IB, Hellberg ME. 2014. Genetic species delineation among branching Caribbean *Porites* corals. *Coral Reefs* 33(4):1019–1030 DOI 10.1007/s00338-014-1179-5.
- Precht WF, Gintert BE, Robbart ML, Fura R, Van Woesik R. 2016. Unprecedented disease-related coral mortality in southeastern Florida. *Scientific Reports* 6(1):31374 DOI 10.1038/srep31374.
- Radabaugh KR, Moyer RP, Chappel AR, Dontis EE, Russo CE, Joyse KM, Bownik MW, Goeckner AH, Khan NS. 2019. Mangrove damage, delayed mortality, and early recovery following Hurricane Irma at two landfall sites in Southwest Florida, USA. *Estuaries and Coasts* 43(5):1104–1118 DOI 10.1007/s12237-019-00564-8.
- Roberts HH, Rouse LJ Jr, Walker ND, Hudson JH. 1982. Cold-water stress in Florida Bay and northern Bahamas: a product of winter cold-air outbreaks. *Journal of Sedimentary Research* 52:145–155 DOI 10.1306/212F7EFA-2B24-11D7-8648000102C1865D.
- Rogers CS. 2009. High diversity and abundance of scleractinian corals growing on and near mangrove prop roots, St. John, US Virgin Islands. *Coral Reefs* 28:909 DOI 10.1007/s00338-009-0526-4.
- Rogers CS. 2017. A unique coral community in the mangroves of Hurricane Hole, St. John, US Virgin Islands. *Diversity* 9(3):29 DOI 10.3390/d9030029.
- Rogers CS. 2019. Immediate effects of hurricanes on a diverse coral/mangrove ecosystem in the U.S. Virgin Islands and the potential for recovery. *Diversity* 11(8):130 DOI 10.3390/d11080130.

- Rogers CS, Muller E, Spitzack T, Miller J. 2009.** Extensive coral mortality in the US Virgin Islands in 2005/2006: a review of the evidence for synergy among thermal stress, coral bleaching and disease. *Caribbean Journal of Science* 45(2–3):204–214 DOI 10.18475/cjos.v45i2.a8.
- Romera-Castillo C, Jaffé R. 2015.** Free radical scavenging (antioxidant activity) of natural dissolved organic matter. *Marine Chemistry* 177:668–676 DOI 10.1016/j.marchem.2015.10.008.
- Salm RV, Done T, McLeod E. 2006.** Marine protected area planning in a changing climate. In: Phinney JT, Hoegh-Guldberg O, Kleypas J, Skirving W, Strong A, eds. *Coral Reefs and Climate Change: Science and Management*. Washington, D.C.: American Geophysical Union, 207–221.
- Scavo Lord K, Lesneski KC, Bengtsson ZA, Kuhn KM, Madin J, Cheung B, Ewa R, Taylor JF, Burmester EM, Morey J, Kaufman L, Finnerty JR. 2020.** Multi-year viability of a reef coral population living on mangrove roots suggests an important role for mangroves in the broader habitat mosaic of corals. *Frontiers in Marine Science* 7:377 DOI 10.3389/fmars.2020.00377.
- Sheppard C, Dixon DJ, Gourlay M, Sheppard A, Payet R. 2005.** Coral mortality increases wave energy reaching shores protected by reef flats: examples from the Seychelles. *Estuarine Coastal and Shelf Science* 64(2–3):223–234 DOI 10.1016/j.ecss.2005.02.016.
- Van Hooidonk R, Maynard JA, Manzello D, Planes S. 2014.** Opposite latitudinal gradients in projected ocean acidification and bleaching impacts on coral reefs. *Global Change Biology* 20(1):103–112 DOI 10.1111/gcb.12394.
- Vega Thurber RL, Burkepile DE, Fuchs C, Shantz AA, McMinds R, Zaneveld JR. 2013.** Chronic nutrient enrichment increases prevalence and severity of coral disease and bleaching. *Global Change Biology* 20(2):544–554 DOI 10.1111/gcb.12450.
- Walton CJ, Hayes NK, Gilliam DS. 2018.** Impacts of a regional, multi-year, multi-species coral disease outbreak in Southeast Florida. *Frontiers in Marine Science* 5:323 DOI 10.3389/fmars.2018.00323.
- Weil E, Hernández-Delgado EA, Gonzales M, Williams S, Suleimán-Ramos S, Figuerola M, Metz-Estrella T. 2019.** Spread of the new coral disease SCTLD into the Caribbean: implications for Puerto Rico. *Reef Encounter* 34:38–43.
- Weil E, Rogers CS. 2011.** Coral reef diseases in the Atlantic-Caribbean. In: Dubinsky Z, Stambler N, eds. *Coral Reefs: An Ecosystem in Transition*. New York: Springer, 465–491.
- West JM, Salm RV. 2003.** Resistance and resilience to coral bleaching: implications for coral reef conservation and management. *Conservation Biology* 17(4):956–967 DOI 10.1046/j.1523-1739.2003.02055.x.
- Williams EH Jr, Bunkley-Williams L. 1990.** The world-wide coral reef bleaching cycle and related sources of coral mortality. *Atoll Research Bulletin* 335:1–71 DOI 10.5479/si.00775630.335.1.
- Yates KK, Rogers CS, Herlan JJ, Brooks GR, Smiley NA, Lawson RA. 2014.** Diverse coral communities in mangrove habitats suggest a novel refuge from climate change. *Biogeosciences* 11(16):4321–4337 DOI 10.5194/bg-11-4321-2014.
- Yates KK, Zawada DG, Smiley NA, Tiling-Range G. 2017.** Divergence of seafloor elevation and sea level rise in coral reef ecosystems. *Biogeosciences* 14(6):1739–1772 DOI 10.5194/bg-14-1739-2017.
- Zaneveld JR, Burkepile DE, Shantz AA, Pritchard C, McMinds R, Payet JP, Welch R, Correa AMS, Lemoine NP, Rosales S, Fuchs C, Maynard JA, Thurber RV. 2016.** Overfishing and nutrient pollution interact with temperature to disrupt coral reefs down to microbial scales. *Nature Communications* 7(1):11833 DOI 10.1038/ncomms11833.